

Optimal timing of complete revascularization in patients with ST-segment elevation myocardial infarction and multivessel disease: a pairwise and network meta-analysis

Wen-Qin Guo
Lang Li
Qiang Su
Yu-Han Sun
Xian-Tao Wang
Wei-Ran Dai
Hong-Qing Li

Department of Cardiology, the First
Affiliated Hospital of Guangxi Medical
University, Nanning, China

Introduction: The optimal revascularization strategy for patients with ST-segment elevation myocardial infarction and multivessel disease is unclear. In this study, we performed a meta-analysis to determine the optimal revascularization strategy for treating these patients.

Methods: Searches of PubMed, the Cochrane Library, clinicaltrial.gov, and the reference lists of relevant papers were performed covering the period between the year 2000 and March 20, 2017. A pairwise analysis and a Bayesian network meta-analysis were performed to compare the effectiveness of early complete revascularization (CR) during the index hospitalization, delayed CR, and culprit only revascularization (COR). The primary endpoint was the incidence of major adverse cardiac events (MACE), which were defined as the composite of recurrent myocardial infarction (MI), repeat revascularization, and all-cause mortality. The secondary endpoints were the rates of all-cause mortality, recurrent MI, and repeat revascularization. This study is registered at PROSPERO under registration number CRD42017059980.

Results: Eleven randomized controlled trials including a total of 3,170 patients were identified. A pairwise meta-analysis showed that compared with COR, early CR was associated with significantly decreased risks of MACE (relative risk [RR] 0.47, 95% CI 0.39–0.56), MI (RR 0.55, 95% CI 0.37–0.83), and repeat revascularization (RR 0.35, 95% CI 0.27–0.46) but not of all-cause mortality (RR 0.78, 95% CI 0.52–1.16). These results were confirmed by trial sequential analysis. The network meta-analysis showed that early CR had the highest probability of being the first treatment option during MACE (89.2%), MI (83.3%), and repeat revascularization (80.4%).

Conclusion: Early CR during the index hospitalization was markedly superior to COR with respect to reducing the risk of MACE, as CR significantly decreased the risks of MI and repeat revascularization compared with COR. However, further study is warranted to determine whether CR during the index hospitalization can improve survival in patients with concurrent ST-segment elevation myocardial infarction and multivessel disease. The optimal timing of CR remains inconclusive considering the small number of studies and patients included in the analysis comparing early and delayed CR.

Keywords: ST-segment elevation myocardial infarction, multivessel disease, percutaneous coronary intervention, meta-analysis, trial sequential analysis

Correspondence: Lang Li
Department of Cardiology, the First
Affiliated Hospital of Guangxi Medical
University, 22 Shuangyong Road, Nanning
530021, China
Tel +86 077 1533 1171
Fax +86 077 1535 9801
Email gmXu2015@163.com

Introduction

Primary percutaneous coronary intervention (PPCI) is the recommended treatment for patients with ST-segment elevation myocardial infarction (STEMI). Approximately 50% of patients with STEMI present with multivessel coronary disease at the time of

PPCI,¹ and these patients tend to experience worse mortality and morbidity than patients with single-vessel disease.^{1,2} Therefore, effective treatments for multivessel disease in patients with STEMI are urgently needed.

However, only a limited amount of evidence is available regarding the treatment of STEMI and multivessel disease. The American College of Cardiology Foundation/American Heart Association (ACCF/AHA) guidelines include a class IIb recommendation, ie, they recommend complete revascularization (CR) at the time of PPCI or staged revascularization as a second planned procedure for the treatment of patients with STEMI.³ The European Society of Cardiology/European Association for Cardio-Thoracic Surgery (ESC/EACTS) guidelines include a class IIa recommendation stating that CR should be considered before hospital discharge.⁴ Therefore, the optimal treatment for the disease and the optimal timing of additional revascularization procedures intended to treat the disease remain unclear.

Therefore, we performed a pairwise analysis and a network meta-analysis to compare the effectiveness of current revascularization strategies for STEMI with multivessel disease, namely, early CR during the index hospitalization, delayed CR of nonculprit vessels, and culprit only revascularization (COR). Early CR was defined as the performance of percutaneous coronary intervention (PCI) involving culprit vessel lesions and nonculprit vessel lesions during the same procedure or hospitalization (mean or median number of days after PPCI ≤ 7). Delayed CR was defined as the performance of PCI involving only culprit vessel lesions during the index, followed by PCI involving nonculprit vessel lesions during a separate procedure (>7 days after PPCI). COR was defined as the performance of PCI involving only culprit vessel lesions.

Methods

Data sources and search strategy

This study was performed in accordance with the Preferred Reporting Items for Systematic Reviews and Meta-analyses (PRISMA) statement for network meta-analysis.⁵ The PRISMA checklist is provided in the [Supplementary materials](#). Searches of PubMed, the Cochrane library, clinicaltrials.gov, and the reference lists of relevant papers were performed between the year 2000 and March 20, 2017. The following keywords and MeSH terms were used in the searches: “myocardial infarction”, “multivessel disease”, and “percutaneous coronary intervention”. This study is registered at PROSPERO under registration number CRD42017059980.

Study selection and eligibility criteria

The following studies were included in the analysis: 1) studies including patients with STEMI with multivessel disease; 2) studies whose intervention or control groups received the treatments of interest (CR during the index hospitalization, delayed CR of nonculprit lesions, and COR); 3) studies reporting the outcomes of major adverse cardiac events (MACE), recurrent myocardial infarction (MI), repeat revascularization or all-cause mortality; and 4) randomized controlled trials (RCTs).

Data extraction, outcomes, and quality assessment

We developed a data extraction sheet that was subsequently used by two of our authors (W-QG and QS) who independently extracted the following data from the studies included in the analysis: year of publication, treatment regimen, mean follow-up time, definition of MACE, and timing of the staged procedures. Disagreements were resolved via joint reviews of the literature. In cases in which we noted different results in the same trial, we extracted the data pertaining to the most recent results for analysis. The primary endpoint was the incidence of MACE (defined as the composite of recurrent MI, repeat revascularization, and all-cause mortality) over the longest available follow-up time, and the secondary endpoints were the rates of all-cause mortality, recurrent MI, and repeat revascularization over the longest available follow-up time. All endpoints were defined according to the definitions used in each trial. The intention-to-treat sample size was used when available, and the Cochrane risk-of-bias tool was used to assess the risks of bias.⁶

Statistical analysis

Pairwise meta-analysis and trial sequential analysis

In the pairwise meta-analysis, we assessed all clinical outcomes by calculating pooled relative risks (RRs) and corresponding 95% CIs. To account for unexplained heterogeneity, we performed the meta-analysis using a random-effects model (DerSimonian–Laird method).⁷ The Cochrane Q test and the inconsistency index (I^2 test) were used to assess statistical heterogeneity.⁸ I^2 values $<25\%$ were indicative of low heterogeneity, whereas values between 25% and 50% were indicative of moderate heterogeneity and values $>50\%$ were indicative of high heterogeneity.⁸ The funnel plot method and Egger’s regression asymmetry test were used to determine if publication bias was present.⁹ A pairwise meta-analysis was performed using STATA software, version 12.0 (StataCorp, College Station, TX, USA). In a single trial, interim analysis

may have increased the risk of type I errors. Trial sequential analysis (TSA) is regarded as an interim analysis in which monitoring boundaries are used to determine whether a trial may be terminated early due to the presence of a sufficiently small P -value.¹⁰ Therefore, to determine whether the meta-analysis was less rigorous than a good single RCT, we performed TSA to assess the reliability and conclusiveness of the present evidence regarding the effectiveness of CR during the index hospitalization. The optimal information size was based on the assumption that a reduction in the relative risk (RR) was observed in the trials with a low risk of bias (adequate allocation concealment).¹¹ In addition, we used a default type I error of 5% ($\alpha=5\%$) and a default type II error of 20% ($1-\beta=80\%$).¹⁰ TSA was conducted by TSA software, version 0.9 beta (Copenhagen Trial Unit, Copenhagen, Denmark).

Network meta-analysis

The network meta-analysis was performed using a Bayesian random-effects model to fully preserve the randomized therapy comparisons within the trials and to account for unexplained between-trial heterogeneity.^{12,13} All outcomes are expressed as the RR and corresponding 95% credible interval (CrI). The model fit was based on the residual deviance,¹⁴ and the analyses were performed using the Markov Chain Monte Carlo method.¹³ We used noninformative uniform distributions to generate the posterior distributions of the model parameters and fitted four chains, yielding 400,000 iterations (100,000 per chain). Convergence was assessed by the Brooks–Gelman–Rubin diagnostic,¹⁵ and global heterogeneity was assessed by the I^2 statistic.¹⁶ The “node-splitting” approach was used to evaluate inconsistency.¹⁷ A Bayesian P -value <0.5 was suggestive of the presence of inconsistency between the direct and indirect evidence. In addition, performing a network meta-analysis afforded us the advantage of being able to calculate the probability that each intervention was the optimal intervention.¹⁸ To assess the robustness of the results of the network meta-analysis, we performed the following sensitivity analyses: 1) analyses excluding unpublished studies, 2) analyses excluding studies that did not include repeat revascularization in their definition of MACE, 3) analyses excluding studies in which information regarding the mean or median timing of the second procedure was not available, 4) analyses excluding studies in which all outcomes were expressed with odds ratios (ORs) and corresponding 95% CrIs, and 5) analyses combining the indicated summary statistics (ie, hazard ratios [HRs] and ORs) into a single Bayesian analysis using the method devised by Woods et al¹⁹ in cases in which HRs were reported. To explore the association between

the log-risk of the primary outcome (MACE) and follow-up time, we performed a meta-regression by the Bayesian approach.²⁰ Moreover, we conducted a subgroup analysis of the data (angiography-guided PCI vs fractional flow reserve-guided PCI) regarding the primary outcome by calculating the interaction term β .²⁰ To detect dominant publication bias, we plotted a comparison-adjusted funnel plot with STATA version 12.0. The Bayesian frame network meta-analysis was conducted using gemtc and rjags in R software, version 3.3.2 (R Foundation for Statistical Computing, Vienna, Austria).

Results

Search results and characteristics of the included studies

A flow diagram of the literature search and study selection process is shown in Figure 1. We initially determined that 448 studies were eligible for the analysis based on their titles and abstracts. After screening, 11 RCTs involving 3,170 patients were included in the analysis.^{21–31} We excluded a study by Maamoun et al because it was a pilot cohort study,³² a study by Ijsselmuiden et al because it included patients without STEMI,³³ a study by Dambrink et al because it was a short-term report that included data from the same trial reported in the publication by Ghani et al,³⁴ and also the EXPLORE trial because it assessed the efficacy of staged chronic total occlusion (CTO)-PCI.³⁵ The network plot of the comparisons of the revascularization strategies is shown in Figure 2. Among these 11 RCTs, six compared early CR during the index hospitalization with COR,^{21–25,31} two compared delayed CR with COR,^{26,27} two compared early CR with delayed CR,^{28,29} and one 3-arm trial compared early CR during the index hospitalization, delayed CR, and COR.³⁰ The characteristics of the studies included in the analysis and their populations are listed in Table 1. All the studies included patients with STEMI with multivessel disease. Three trials performed fractional flow reserve (FFR) of the nonculprit lesions.^{25,26,31} The follow-up time ranged from 6 to 38 months. The results of one of the trials were reported only in conference presentations.²⁷ The complications of revascularization are shown in Table S1. An assessment of the risk of bias of the included studies is presented in Figure S1. Overall, the included studies had a low to intermediate risk of bias.

Results of the pairwise meta-analysis and TSA

The results of the pairwise meta-analyses are shown in Figure 3. Early CR was associated with a lower risk of MACE (RR 0.47, 95% CI 0.39–0.56; $I^2=0\%$) than COR, as early CR

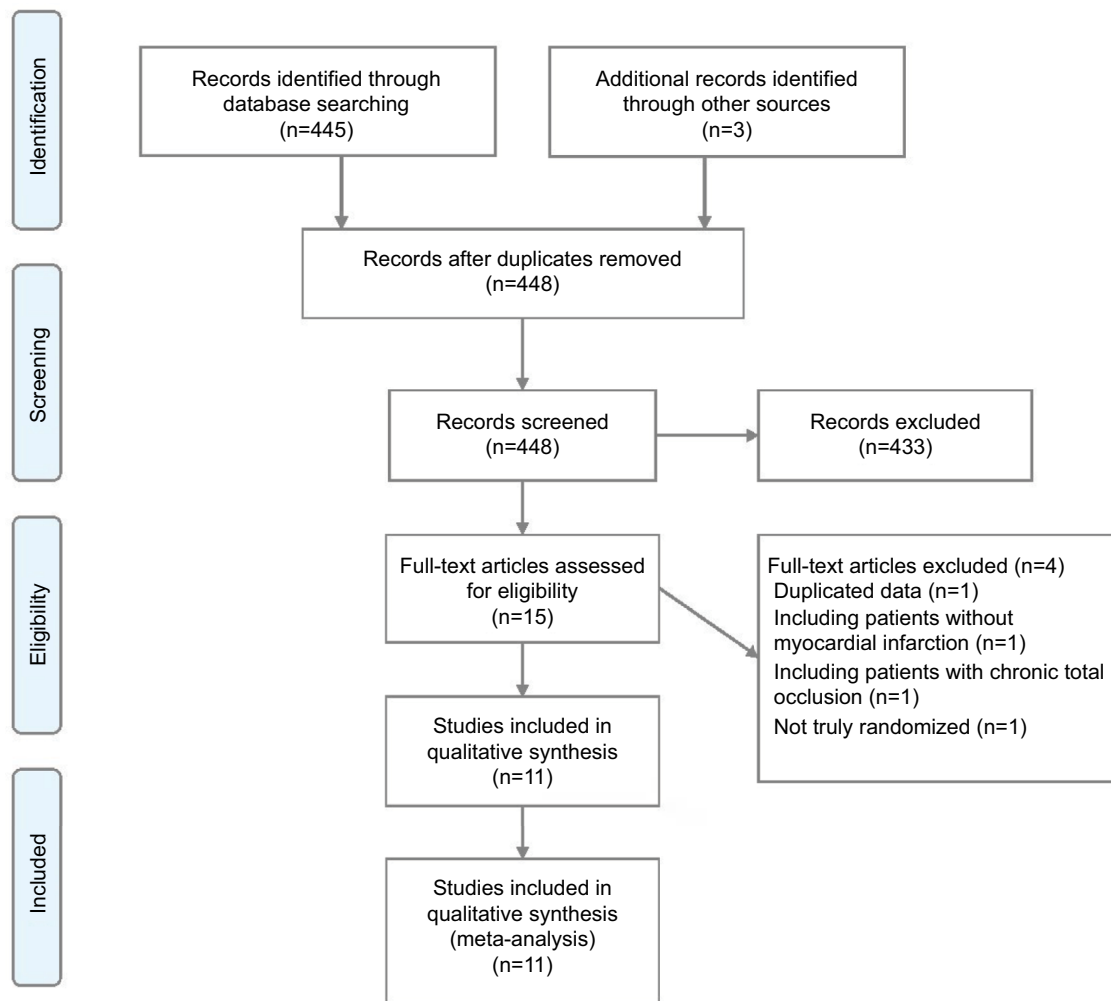


Figure 1 Literature search and selection.
Note: From the study by Moher et al.⁴⁶

was associated with reduced risks of MI (RR 0.55, 95% CI 0.37–0.83; $P=0\%$) and repeat revascularization (RR 0.35, 95% CI 0.27–0.46; $P=0\%$) compared with COR. The risk of all-cause mortality was similar in the two groups (RR 0.78, 95% CI 0.52–1.16; $P=0\%$). The risks of MACE (RR 0.77, 95% CI 0.39–1.49; $P=76.4\%$), MI (RR 1.52, 95% CI 0.46–5.00; $P=55.4\%$), repeat revascularization (RR 0.62, 95% CI 0.23–1.64; $P=79.3\%$), and all-cause mortality (RR 0.72, 95% CI 0.28–1.85; $P=30.6\%$) were similar in the delayed CR and COR groups. Additionally, the risks of MACE, MI, repeat revascularization, and all-cause mortality were similar in the early CR and delayed CR groups. The TSA results are shown in Figure 4. Regarding MACE, the TSA comparing early CR with COR showed that the cumulative z-curve crossed the conventional boundary ($P=0.05$) and the trial sequential boundary, indicating that the evidence showing early CR that

reduced the risk of MACE by 53% (results from the meta-analysis with low-risk evidence, Figure 2) compared with COR was firm (Figure 2A). Regarding MI and repeat revascularization, the evidence of the TSA results indicated that early CR reduced the risks of MI and repeat revascularization by 44% and 65%, respectively, compared with COR (Figure 2B and C). However, regarding all-cause mortality, the TSA comparing early CR and COR showed that the cumulative z-curve failed to cross the conventional boundary ($P=0.05$) and the trial sequential boundary, indicating that early CR did not reduce the risk of all-cause mortality (Figure 2D).

Results of the network meta-analysis

The results of the network meta-analysis are shown in Figure 5. The risk of MACE was significantly lower in the early CR group than in the COR group (RR 0.51; 95% CrI

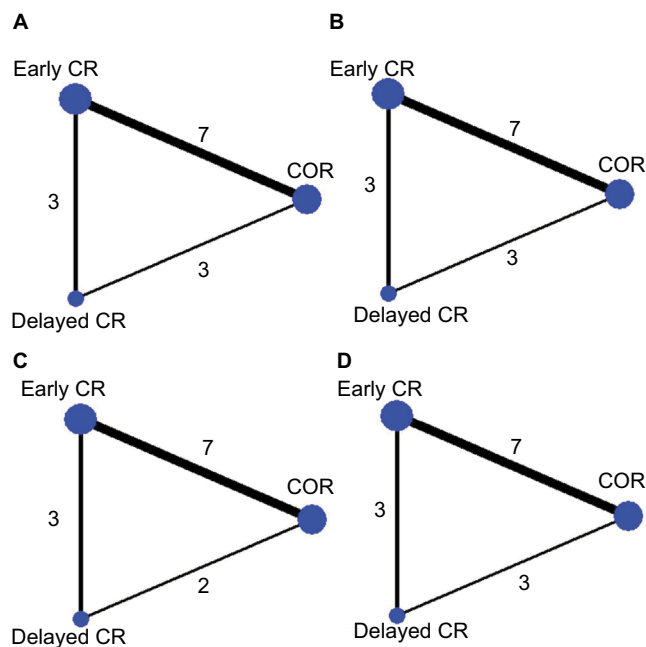


Figure 2 Network plot for the Bayesian network meta-analysis.

Notes: Network plots for MACE (A), recurrent MI (B), repeat revascularization (C), and all-cause mortality (D). Delayed CR, staged multivessel revascularization of nonculprit lesions during a separate procedure (>7 days after PPCI); early CR, complete revascularization during the index hospitalization (mean or median number of days after PPCI ≤ 7).

Abbreviations: CR, complete revascularization; COR, culprit-only revascularization; MACE, major adverse cardiac events; MI, myocardial infarction; PPCI, primary percutaneous coronary intervention.

0.38, 0.71). There was no significant difference between the delayed CR group and the COR group (RR 0.68; 95% CrI 0.43, 1.03). Additionally, the risk of repeat revascularization was significantly lower in the early CR group than in the COR group (RR 0.42; 95% CrI 0.30, 0.63) and was significantly lower in the delayed CR group than in the COR group (RR 0.55; 95% CrI 0.28, 0.91). The risk of MI was not significantly different between the early CR and COR groups (RR 0.55; 95% CrI 0.24, 1.18). A comparison of early CR and delayed CR showed that the risk of overall clinical outcomes was similar between the two groups. There was no difference among the three approaches with respect to the risk of all-cause mortality.

Ranking the probabilities of the overall clinical outcomes

A graph of the probability rankings for each treatment is shown in Figure 6. Early CR showed the highest probability of being the first treatment option for MACE (89.2%), followed by delayed CR (10.8%) and COR (0%). Similarly, early CR showed the highest probability of being the first treatment option for MI (83.3%) and repeat revascularization (80.4%). Delayed CR showed the highest probability of

being the second treatment option for MACE (10.8%), MI (13.2%), and repeat revascularization (19.5%) but showed the highest probability of being the first treatment option for all-cause mortality (47.4%).

Additional analyses

In the pairwise meta-analysis, the funnel plot and Egger's regression asymmetry test results suggested that no publication bias was present (Figure S3). In the network meta-analysis, the global heterogeneities were 35.2% for MACE, 13.9% for MI, 20.3% for repeat revascularization, and 0% for all-cause mortality. The results of the inconsistency analysis showed that some inconsistencies were present (Table 2). The results of the sensitivity analysis are shown in Table 3. The results of this analysis were similar to those of the main analysis. The Bayesian meta-regression results showed that follow-up time had no significant effect on the incidence of MACE (interaction term $\beta = -0.08$; CrI -0.86, 0.72, the graph of Bayesian meta-regression is shown in Figure S4), and the subgroup analysis showed that the type of guidance had no significant effect on the incidence of MACE (interaction term $\beta = 0.14$; CrI -0.45, 0.71). The comparison-adjusted funnel plots suggested that the clinical outcomes of the study were not affected by publication bias (Figure S5).

Discussion

The results of the pairwise meta-analysis and TSA clearly demonstrated that CR during the index hospitalization was superior to COR with respect to preventing MACE, MI, and repeat revascularization, and the network meta-analysis showed that early CR had the highest probability of being the first treatment option for MACE, MI, and repeat revascularization.

The performance of preventive PCI in noninfarcted coronary arteries during the index hospitalization was associated with a reduced risk of adverse cardiovascular events compared with the performance of COR.²² However, the results of the PRAGUE 13 trial demonstrated that staged multivessel PCI was not superior to COR with respect to reducing the risk of MACE.²⁷ Differences in the results of these trials may be due to significant differences in the times at which revascularization of nonculprit vessels was performed in each trial.³⁶ Recent observational studies uncovered evidence regarding the optimal timing of staged PCI in which early CR was superior to delayed CR and COR in reducing the risk of MACE.^{37,38} Therefore, in this analysis, we organized patients who underwent CR into groups comprising patients who underwent CR during the index hospitalization and patients

Table 1 Characteristics of the included randomized controlled trials

Study	Year	PCI strategies		Timing of CR	Follow-up time (months)	Country	Center	HR (95% CI) of the MACE ^a	The definition of MACE ^b	
		Early CR	Delayed CR							
Early CR vs COR di Mario et al ²¹	2004	52	NA	17	Index ^c	12	Italy, UK	Multicenter	NA	Death, MI, or repeat revascularization
Wald et al ²²	2013	234	NA	231	Index ^c	23 ^d	UK	Multicenter	0.35 (0.21–0.58)	Death from cardiac causes, MI, or refractory angina
Gershlick et al ²³	2015	150	NA	146	Index or median 3 days after PPCI ^e	12	UK	Multicenter	0.45 (0.24–0.84)	Death, MI, or HF, or repeat revascularization
Engström et al ³¹	2015	314	NA	313	2 days after PPCI ^e	27 ^e	Denmark	Multicenter	0.56 (0.38–0.83)	Death, MI, or ischemia-driven repeat revascularization
Hamza et al ²⁴	2016	50	NA	50	Index or within 3 days after PPCI ^e	6	Egypt, USA	Multicenter	NA	Death, MI, or ischemia-driven repeat revascularization
Smits et al ²⁵	2017	295	NA	590	Index or within 3 days after PPCI ^e	12	Europe and Asian	Multicenter	0.35 (0.22–0.55)	Death, MI, repeat revascularization, or cerebrovascular event
Ghani et al ²⁶	2012	NA	79	40	Median 7.5 days after PPCI ^f	36	Netherlands	Single center	NA	Death, MI, or repeat revascularization
Hlinomaz et al ²⁷	2015	NA	106	108	3–40 days after PPCI ^f	38 ^e	Canada	Multicenter	1.35 (0.66–2.74)	Death, MI, or stroke
Early CR vs delayed CR Ochala et al ²⁸	2004	48	44	NA	Index ^c Mean 27.3 days after PPCI ^f	6	Poland	Multicenter	NA	Death, MI, or target vessel revascularization
Terasov et al ²⁹	2014	46	43	NA	Index ^c Mean 8.5 days after PPCI ^f	6	Russia	Single center	NA	Death, MI, or target vessel revascularization
Politi et al ³⁰	2010	65	65	84	Index ^c Mean 42.3 days after PPCI ^f	30 ^d	Italy	Single center	NA	Death, MI, rehospitalization for ACS, or repeat revascularization

Notes: ^aWe extracted the HR and corresponding 95% CI if it is available. ^bDefined as per the individual trial. ^cEarly CR. ^dMean. ^eMedian. ^fDelayed CR. Early CR, complete revascularization during the index hospitalization (mean or median number of days after PPCI ≤7); delayed CR, staged multivessel revascularization of nonculprit lesions during a separate procedure (>7 days after PPCI).

Abbreviations: ACS, acute coronary syndrome; COR, culprit-only revascularization; CR, complete revascularization; HF, heart failure; HR, hazard ratio; MACE, major adverse cardiac events; MI, myocardial infarction; NA, not available; PPCI, percutaneous coronary intervention; PPCI, primary percutaneous coronary intervention.

who underwent delayed CR during a separate procedure. The probabilities that CR during the index hospitalization and delayed CR were the first treatment option for MACE were 89.2% and 10.8%, respectively. These results imply that the timing of the second procedure plays an important role in determining the prognoses of patients with STEMI with multivessel disease. Moreover, CR during the index hospitalization was associated with a lower risk of MACE than COR. Therefore, CR during the index hospitalization reduced the risk of MACE in patients with STEMI and multivessel disease, which supports the present ESC guidelines. However, the number of studies comparing early CR and delayed CR was limited, and the results were inconclusive. Therefore, the optimal timing of CR is still not clear. Additionally, in our

study, patients with CTOs and cardiac shock were excluded. Accordingly, the results of our analysis should be interpreted with caution. However, significant evidence can be yielded from the CULPRIT-SHOCK trial, which was published in the 2017 TCT and was the only RCT surrounding the issue of complete strategy for patients with STEMI and multivessel disease present with cardiogenic shock. In this study, 706 patients with STEMI and multivessel disease present with cardiogenic shock were included and randomly divided into the group of multivessel CR and COR. The primary endpoint was death from any cause or renal replacement therapy. COR was associated with lower all-cause mortality or renal replacement therapy compared with multivessel CR (45.9% and 55.4%, respectively, RR 0.83, 95% CI

A Early CR vs COR

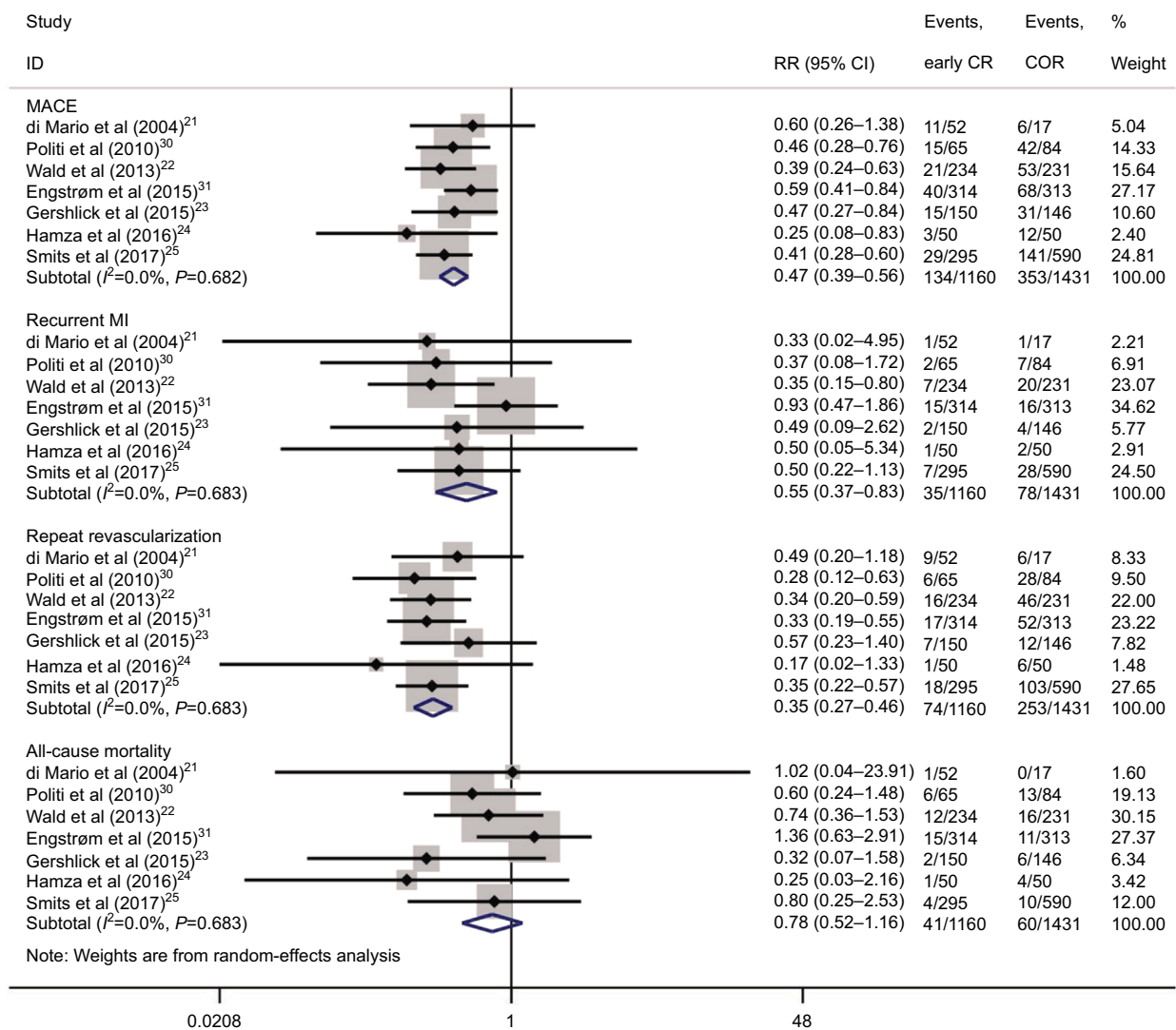


Figure 3 (Continued)

B Delayed CR vs COR

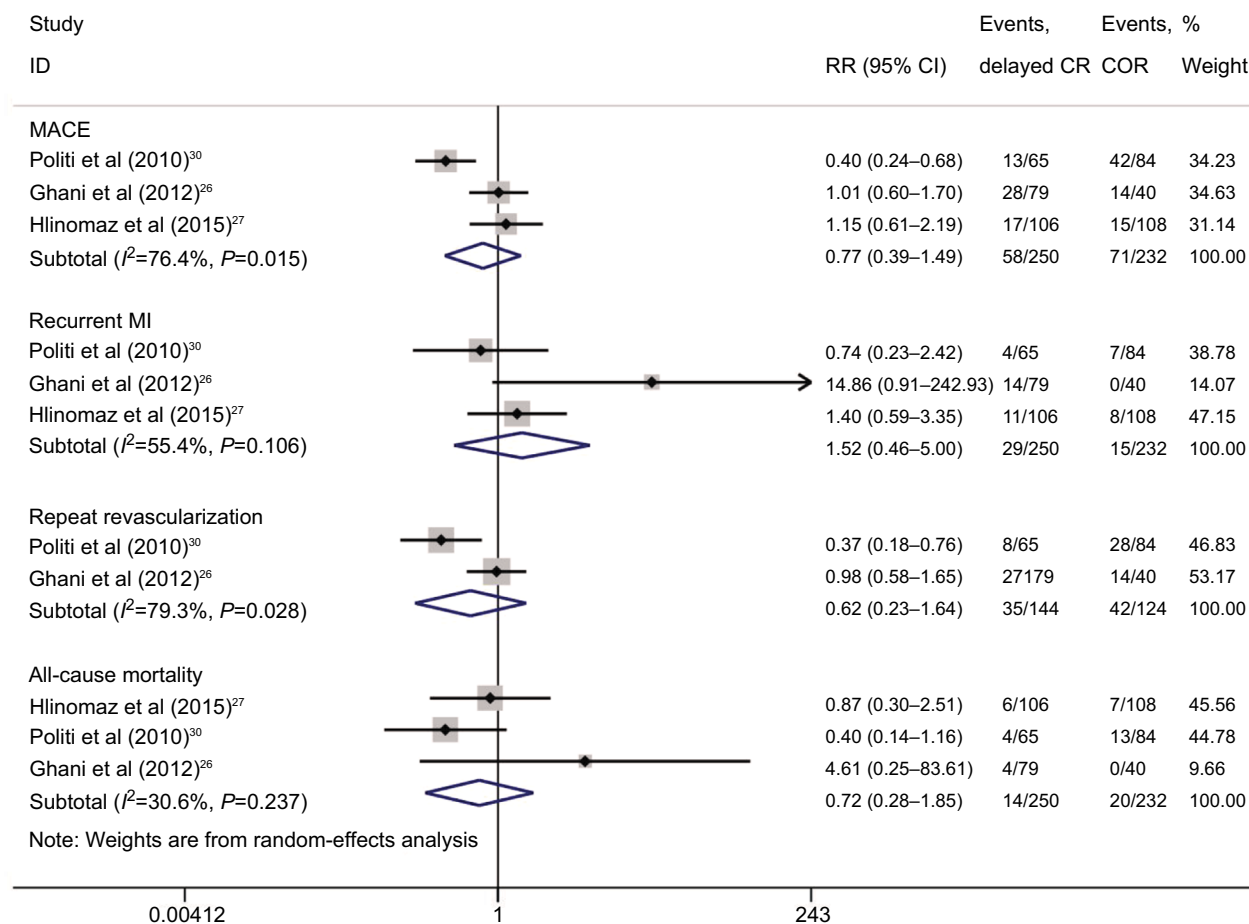


Figure 3 (Continued)

0.71–0.96; $P=0.01$). When the primary endpoint was divided individually, the RR of all-cause mortality in the COR group, compared with the multivessel CR group, was 0.84 (95% CI 0.72–0.98; $P=0.03$), and the RR of renal replacement therapy was 0.71 (95% CI 0.49–1.03; $P=0.07$).³⁹

Interestingly, the results of the present analysis indicate that CR during the index hospitalization has satisfactory effects on the risk of MI, which may be due to the early revascularization of nonculprit vessels. Patients with STEMI have large plaque burdens in noninfarcted arteries. The incidence of MACE attributable to recurrence at the site of a nonculprit lesion was equal to the incidence of MACE attributable to recurrence at the site of a culprit lesion.⁴⁰ Of the nonculprit lesions associated with recurrence, the majority were thin-cap fibroatheromas or characterized by a large plaque burden and featured a small luminal area.⁴⁰ Therefore, the effectiveness of CR during the index hospitalization may be related to the pacification of vulnerable plaques in nonculprit lesions. Of

note, the MI events included periprocedural and spontaneous MI in most analyzed studies. It is difficult to identify the type of MI (periprocedural or spontaneous MI) among STEMI patients undergoing immediate CR or very early CR (<3 days after the index procedure). Therefore, further study with MI classification is warranted to resolve this debate. In this study, approximately 43% of patients in the CR group (including early CR and delayed CR) were treated with FFR-guided CR. To identify an association between the risk of MACE and PCI guidance, we performed a subgroup analysis by dividing the CR group into FFR- and angiography-guided PCI. The type of guidance had no significant effect on the incidence of MACE. Indeed, the role of FFR in the treatment of STEMI and multivessel disease is debatable. In the study by Dambrink et al, nearly 40% of nonculprit lesions in the CR group were not hemodynamically significant ($FFR>0.75$).³⁴ FFR-guided PCI was not associated with a lower risk of MACE compared with conservative COR.²⁶ Additionally, in

C Early CR vs delayed CR

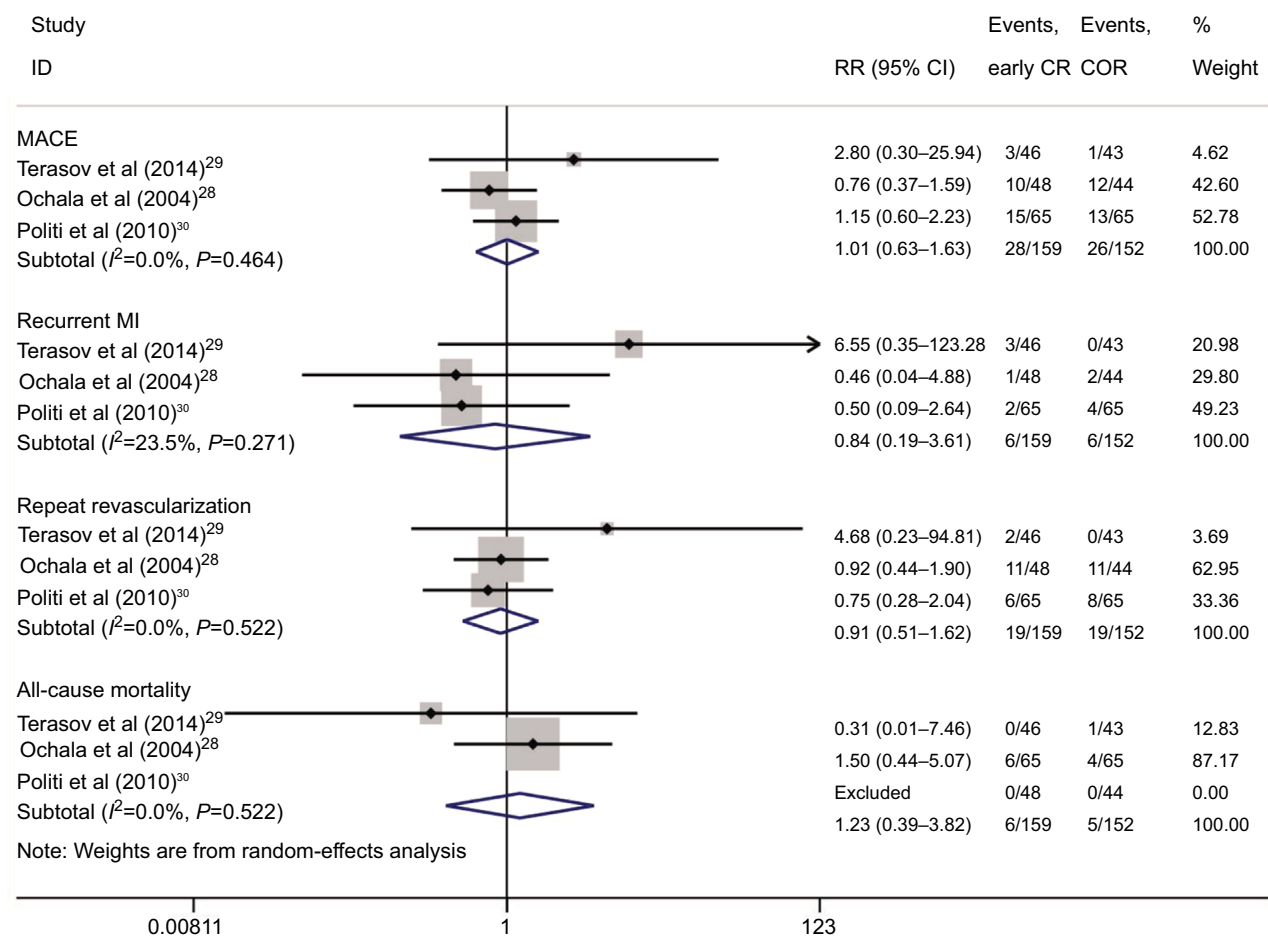


Figure 3 Results of the pairwise meta-analysis of the overall rates of the clinical outcome.

Notes: Results of the pairwise meta-analysis of the early CR versus COR (A), delayed CR versus COR (B), and early CR versus delayed CR (C). Delayed CR, staged multivessel revascularization of nonculprit lesions during a separate procedure (>7 days after PPCI); early CR, complete revascularization during the index hospitalization (mean or median number of days after PPCI ≤7).

Abbreviations: COR, culprit-only revascularization; CR, complete revascularization; MACE, major adverse cardiac events; MI, myocardial infarction; PPCI, primary percutaneous coronary intervention; RR, relative risk.

Table 2 Assessment of inconsistency between the direct and indirect evidence

Outcome	Comparison	Direct evidence log RR (95% CrI)	Indirect evidence log RR (95% CrI)	Network evidence log RR (95% CrI)	P-value
MACE	Early CR vs COR	-0.74 (-0.99, 0.50)	0.15 (-0.72, 1.1)	-0.67 (-0.97, -0.34)	0.051
	Delayed CR vs COR	-0.25 (-0.77, 0.33)	-0.84 (-1.9, 0.13)	-0.39 (-0.83, 0.02)	0.264
	Early CR vs delayed CR	0.12 (-0.40, 0.68)	-0.85 (-1.4, -0.29)	-0.28 (-0.71, 0.21)	0.016
Recurrent MI	Early CR vs COR	-0.82 (-1.7, -0.17)	2.00 (-0.13, 4.9)	-0.59 (-1.4, 0.17)	0.013
	Delayed CR vs COR	0.44 (-0.65, 1.70)	-2.00 (-4.80, 0.03)	-0.01 (-1.20, 0.93)	0.037
	Early CR vs delayed CR	0.47 (-0.89, 2.00)	-1.60 (-3.60, -0.24)	-0.58 (-1.60, 0.60)	0.034
Repeat revascularization	Early CR vs COR	-0.96 (-1.30, -0.62)	0.23 (-0.81, 1.50)	-0.86 (-1.20, -0.46)	0.037
	Delayed CR vs COR	-0.38 (-1.10, 0.31)	-1.20 (-2.50, -0.19)	-0.61 (-1.30, -0.10)	0.169
	Early CR vs delayed CR	-0.09 (-0.56, 0.81)	-0.95 (-1.80, -0.11)	-0.25 (-0.77, 0.46)	0.048
All-cause mortality	Early CR vs COR	-0.15 (-0.72, 0.42)	0.45 (-3.60, 4.40)	-0.10 (-0.65, 0.47)	0.746
	Delayed CR vs COR	-0.05 (-0.94, 1.10)	-0.04 (-4.0, 3.80)	-0.13 (-0.91, 0.80)	I
	Early CR vs delayed CR	0.44 (-1.00, 1.90)	-0.61 (-2.40, 0.73)	0.04 (-0.96, 0.90)	0.267

Note: Delayed CR, staged multivessel revascularization of nonculprit lesions during a separate procedure (>7 days after PPCI); early CR, complete revascularization during the index hospitalization (mean or median number of days after PPCI ≤7).

Abbreviations: COR, culprit-only revascularization; CR, complete revascularization; CrI, credible interval; MACE, major adverse cardiac events; MI, myocardial infarction; PPCI, primary percutaneous coronary intervention; RR, relative risk.

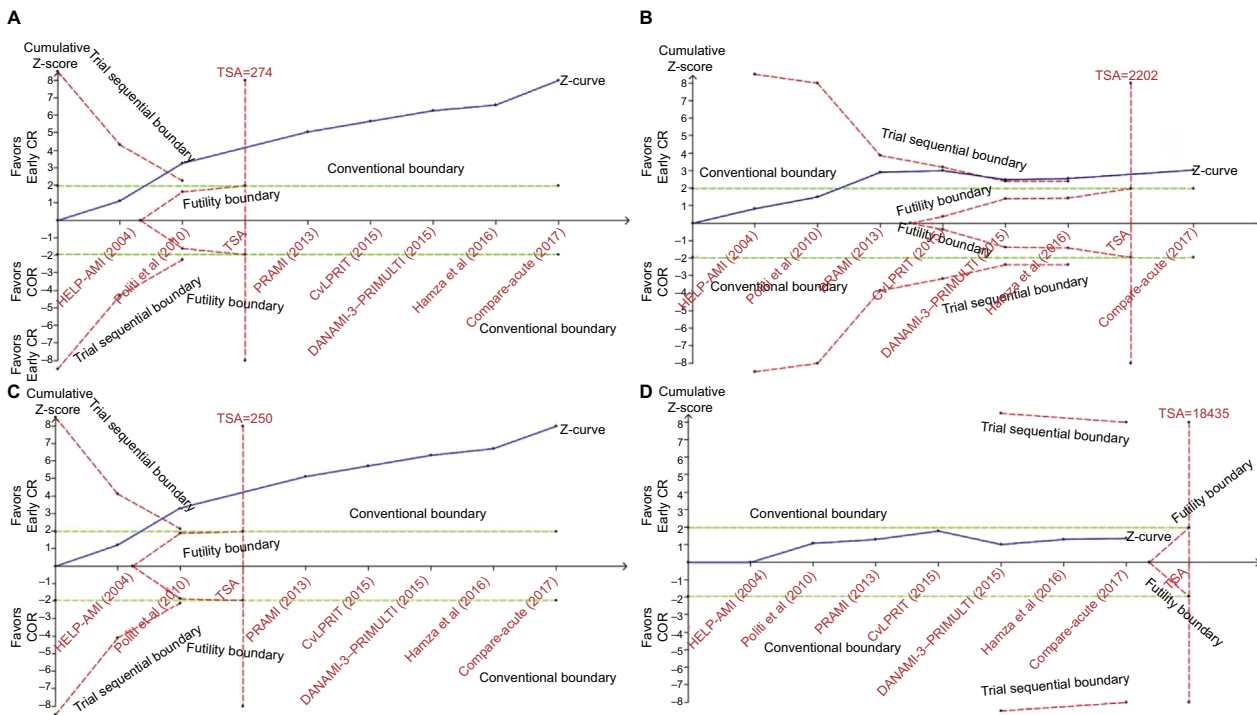


Figure 4 Results of the TSA of the risks of clinical outcomes.

Notes: Results of the TSA of the risks of MACE (A), recurrent MI (B), repeat revascularization (C), and all-cause mortality (D). Early CR, complete revascularization during the index hospitalization (mean or median number of days after PPCI ≤ 7).

Abbreviations: COR, culprit-only revascularization; CR, complete revascularization; MACE, major adverse cardiac events; MI, myocardial infarction; PPCI, primary percutaneous coronary intervention; TSA, trial sequential analysis.

our study, we noted no difference in mortality between the early CR and COR groups. This finding may be attributable to the small patient populations of the included trials; thus, the ongoing COMPLETE trial (NCT01740479) and FULL REVASC trial (NCT02862119) will be helpful to determine whether early CR has a beneficial effect on patient survival.

Reliability and conclusiveness of our analyses

The conclusiveness of our analyses should be evaluated on the basis of several issues. The first is whether heterogeneity between studies was noted in each comparison. In the pairwise meta-analysis, no heterogeneity was observed in comparison between early CR and COR regardless of the clinical outcome. The second issue is the threshold of statistical significance. We performed TSA to quantify the statistical reliability of our data. Early CR significantly reduced the risk of MACE – as it reduced the risks of MI and repeat revascularization – but did not appear to reduce the risk of death compared with COR. The third issue is the precision of our estimates. The network meta-analysis integrated our direct and indirect evidence to increase the precision of our results.⁴¹ The results of the pairwise

meta-analysis showed that the risk of MACE was similar in the delayed CR and COR groups. The corresponding CI ranged from 0.39 to 1.49. The estimate from the network meta-analysis was more precise than that from the pairwise meta-analysis, as the former analysis yielded a lower RR (0.77 in the pairwise meta-analysis vs 0.68 in the network meta-analysis) and a smaller CrI, which ranged from 0.43 to 1.03, than the latter analysis. The fourth issue is the consistency between the direct and indirect estimates in the network meta-analysis. Unfortunately, certain inconsistencies were noted in the network analysis (eg, inconsistency was noted in the results of comparison of the effects of early CR and COR on the risk of MI). These inconsistencies may have been caused by limitations in the amount of data comparing early CR and delayed CR. In the pairwise meta-analysis, the MI outcome was significantly better with early CR than with COR (RR 0.55, 95% CI 0.37–0.83). In the Bayesian network meta-analysis, the RR of MI risk in the early CR group, compared with the delayed CR group, was 1.60 (95% CrI 0.41, 7.39), and the corresponding CrI was wide, whereas the RR of MI risk in the delayed CR group, compared with the COR group, was 1.55 (95% CrI 0.52, 5.47). Therefore, early CR was

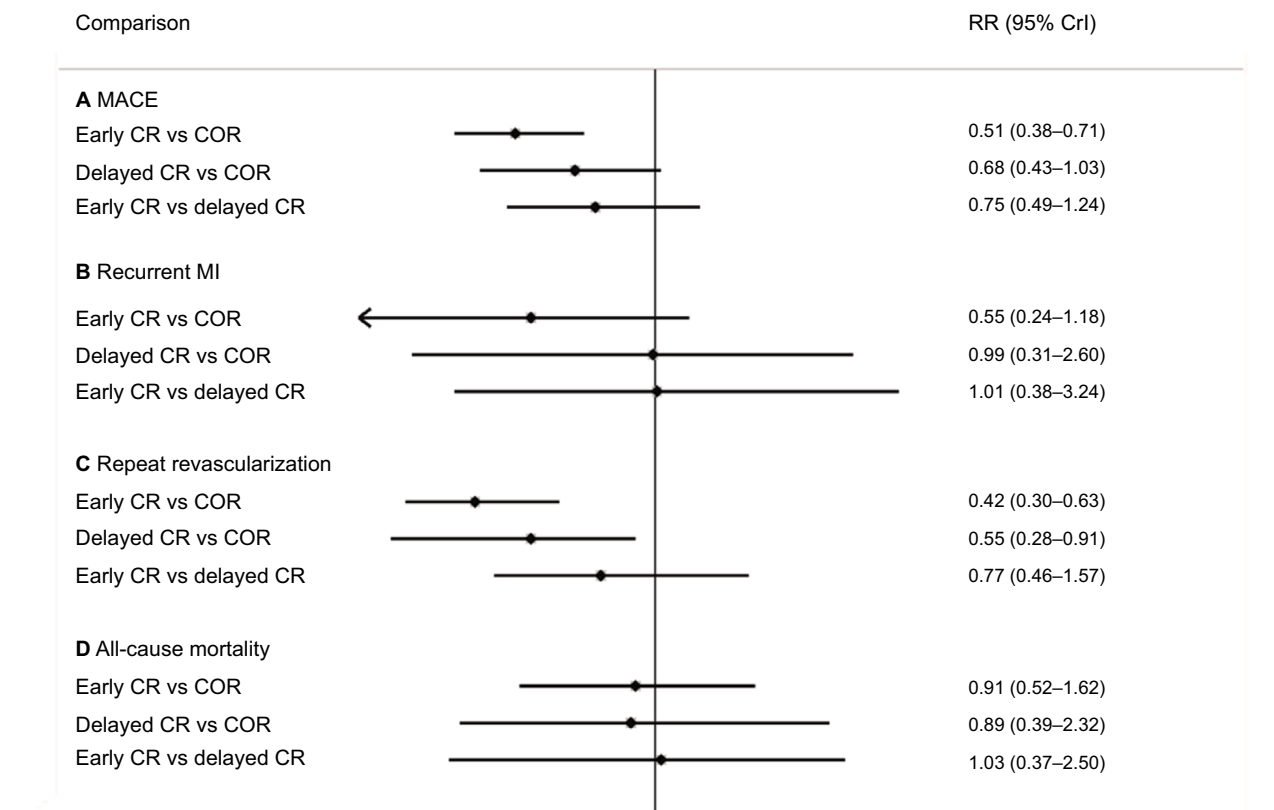


Figure 5 Results of the network meta-analysis of the risks of clinical outcomes.

Notes: Results of the network meta-analysis of the risks of MACE (**A**), recurrent MI (**B**), repeat revascularization (**C**), and all-cause mortality (**D**). Delayed CR, staged multivessel revascularization of nonculprit lesions during a separate procedure (>7 days after PPCI); early CR, complete revascularization during the index hospitalization (mean or median number of days after PPCI ≤7).

Abbreviations: COR, culprit-only revascularization; CR, complete revascularization; CrI, credible interval; MACE, major adverse cardiac events; MI, myocardial infarction; PPCI, primary percutaneous coronary intervention; RR, relative risk.

indirectly compared with COR via a common comparator, namely, delayed COR, and the results of the comparison showed that the RR of MI risk in the early CR group, compared with the COR group, was 1.25 (95% CrI 0.44, 4.48). However, the results of the direct comparison of early CR and COR showed that the risk of MI was lower in the early CR group than in the COR group (RR 0.38; 95% CrI 0.27, 0.54). These results were inconsistent with those of the indirect estimate. Additionally, when combining the direct and indirect evidence, the network evidence showed that the MI risk was similar in the early CR and COR groups (RR 0.55; 95% CrI 0.24, 1.18). Thus, the small number of studies comparing the effectiveness of early CR with that of delayed CR may be the main source of inconsistency in the network meta-analysis.⁴² Therefore, the results of our network meta-analysis should be

interpreted with caution. Finally, in this study, we used probability ranking to determine the probability that each therapy is the best among the revascularization strategies. The number of events for the survival outcomes was low and the corresponding CrI was wide, suggesting that the estimates of RR were imprecise. Because of the low event rates of all-cause mortality, a sample of >18,000 patients is needed to provide the trial power to establish cardiovascular safety. However, performing such a large trial is difficult, considering the limited amount of funding available. Additionally, statistically robust evidence of a beneficial effect was not evident, as no survival benefit was observed for the evaluated strategy.⁴³ Therefore, we performed probability ranking as an alternative way to display data that would be more readily interpretable in this situation.¹⁸

Table 3 The results of sensitivity analysis for the primary outcome

Comparison	Main analysis		Sensitivity analysis 1 ^a		Sensitivity analysis 2 ^b		Sensitivity analysis 3 ^c		Sensitivity analysis 4 ^d		Sensitivity analysis 5 ^e	
	RR (95% CrI)	P	RR (95% CrI)	P	RR (95% CrI)	P	RR (95% CrI)	P	OR (95% CrI)	P	HR (95% CrI)	P
Early CR vs COR	0.51 (0.38, 0.71)	89.2%	0.50 (0.37, 0.67)	76.2%	0.40 (0.25, 0.61)	70.8%	0.50 (0.37, 0.67)	76.2%	0.40 (0.27, 0.59)	89.9%	0.45 (0.33, 0.64)	88.2%
Delayed CR vs COR	0.68 (0.43, 1.03)	10.8%	0.59 (0.35, 0.90)	23.8%	0.46 (0.23, 0.86)	29.1%	0.59 (0.35, 0.90)	23.8%	0.58 (0.32, 0.99)	10.1%	0.60 (0.37, 0.92)	11.8%
Early CR vs delayed CR	0.75 (0.49, 1.24)	0.0%	0.85 (0.55, 1.43)	0.0%	0.87 (0.46, 1.71)	0.1%	0.85 (0.55, 1.43)	0.0%	0.69 (0.39, 1.27)	0.0%	0.76 (0.48, 1.29)	0.0%

Notes: Five sensitivity analysis were performed for this study. ^aExcluding the unpublished study. ^bExcluding studies that were not included in repeat revascularization as a part of MACE. ^cExcluding studies in which the mean or median timing of second procedure was not available. ^dUsing OR (95% CrI) as effect measure. ^eCombined the different summary statistic (ie, HR and OR) in a single Bayesian analysis when the HR was reported. Delayed CR, staged multivessel revascularization of nonculprit lesions during a separate procedure (>7 days after PPCI); early CR, complete revascularization during the index hospitalization (mean or median number of days after PPCI ≤7).

Abbreviations: COR, culprit-only revascularization; CR, complete revascularization; CrI, credible interval; HR, hazard ratio; MACE, major adverse cardiac events; OR, odds ratio; P, probability; PPCI, primary percutaneous coronary intervention; RR, relative risk.

Comparison with previous studies

Some updated pairwise and network meta-analyses evaluating the efficacy and safety of multivessel and CR were recently published. Elgendy et al performed a study in which they divided the revascularization strategies analyzed therein into four groups (immediate CR, CR during the index hospitalization, CR after discharge, and COR) and thus increased the uncertainty caused by the small sample size.⁴⁴ The effectiveness of immediate PCI seemed to be similar to that of multivessel PCI during hospitalization, indicating that immediate multivessel PCI and CR during the index hospitalization can be combined into one group. The revascularization strategies assessed in our study were organized into three groups. We noted no heterogeneity between CR during the index hospitalization and COR with respect to clinical outcomes, a finding that supports the above hypothesis. Additionally, Elgendy et al mainly reported the results of a pairwise meta-analysis comparing CR with COR, but the methodology of the network meta-analysis was flawed. In our study, we clearly reported the methodology of the network meta-analysis and performed a consistency analysis and sensitivity analysis, which were important to assess the quality of evidence. A similar analysis was conducted by Tarantini et al, who suggested that staged CR be performed in patients with concurrent STEMI and multivessel disease because it is associated with lower long- and short-term mortality.⁴⁵ Notably, the superior efficacy of staged CR noted in the above study was driven mainly by the outcomes of non-RCTs, which had selective bias due to the nature of the study (observational). The evidence in our study based on data from RCTs is more convincing. Moreover, our study included data from several recent trials whose results have not been used in previous meta-analyses.²⁵

Study limitations

However, our study was not without limitations. First, the PRAGUE 13 trial has not yet been published. To obtain conclusive evidence, we performed a sensitivity analysis from which this study was excluded. The results of the sensitivity analysis were largely similar to those of the main analysis. Second, variations existed in the designs of the trials included in the analysis. For example, three trials included in this analysis performed FFR of nonculprit lesions to guide decision making regarding the performance of PCI. However, we performed a subgroup analysis by calculating the interaction term β . FFR-guided PCI did not influence the study outcomes. Third, the definition of

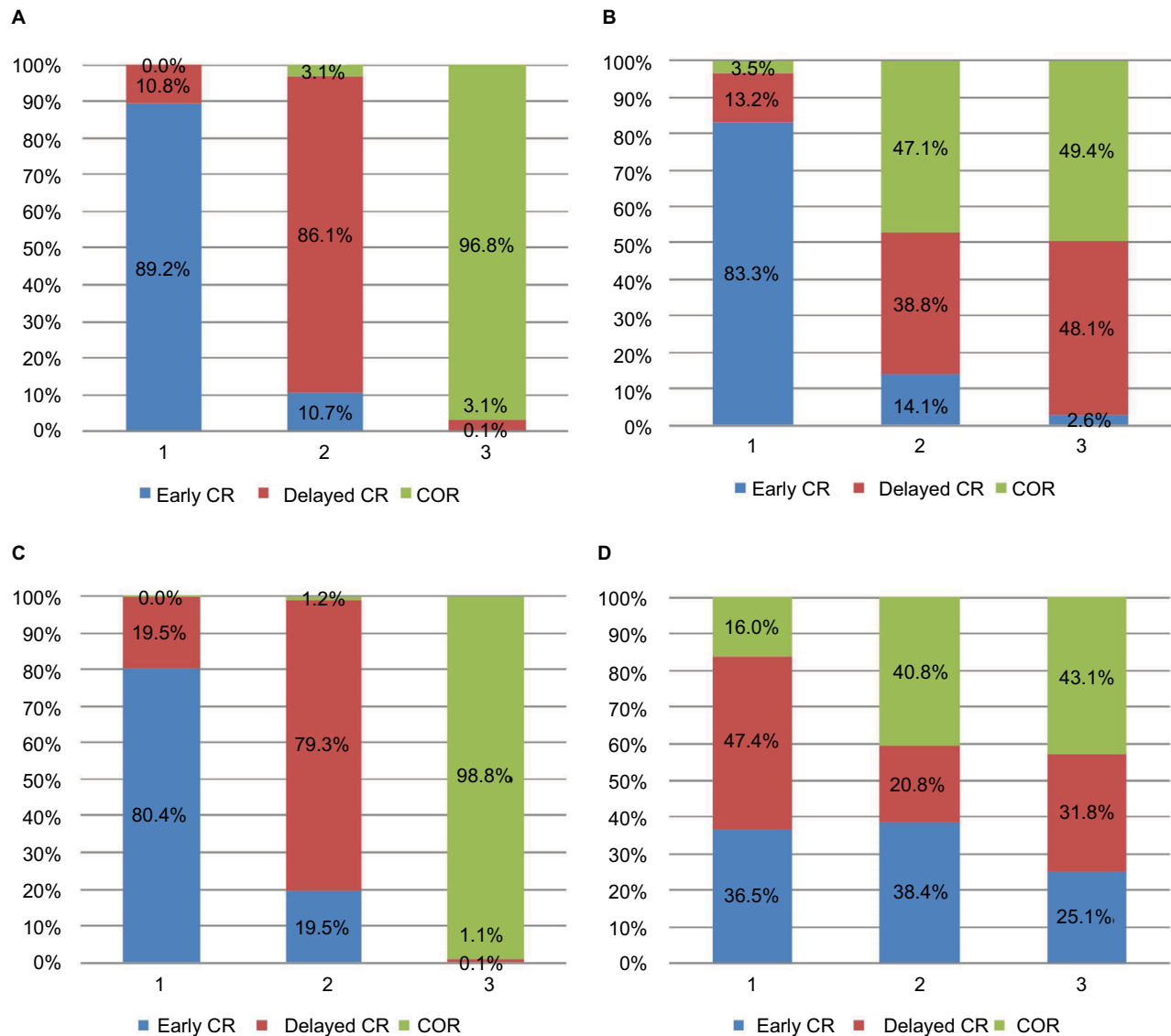


Figure 6 Graph of the probability rankings of each treatment for clinical outcomes.

Notes: Probability rankings of each treatment for MACE (A), recurrent MI (B), repeat revascularization (C), and all-cause mortality (D). Delayed CR, staged multivessel revascularization of nonculprit lesions during a separate procedure (>7 days after PPCI); early CR, complete revascularization during the index hospitalization (mean or median number of days after PPCI ≤7).

Abbreviations: COR, culprit-only revascularization; CR, complete revascularization; MACE, major adverse cardiac events; MI, myocardial infarction; PPCI, primary percutaneous coronary intervention.

MACE differed between studies. Most definitions of MACE included death, MI, and revascularization. To make the evidence conclusive, we performed a sensitivity analysis by excluding studies that did not include revascularization in their definition of MACE. The results from the sensitivity analysis were consistent with the primary analysis. Fourth, this study demonstrated a benefit of CR during the index hospitalization driven mainly by a lower rate of repeat revascularization and MI but not the hard endpoint of mortality. Thus, most included studies were open-label RCTs. The endpoint of repeat revascularization should be regarded as

less stringent, and its “true” benefit in the setting of an open-label study should be questioned. Finally, undertreatment of the COR group cannot be ruled out in certain studies, which strongly discouraged testing for ischemia. Overall, there is increasing evidence that a CR strategy is safe and probably beneficial in STEMI patients.

Conclusion

CR during the index hospitalization was markedly superior to COR with respect to reducing the risk of MACE, as CR reduced the risks of MI and repeat revascularization

compared with COR. Further studies are warranted to determine whether CR during the index hospitalization can improve survival in patients with STEMI with multivessel disease. The optimal timing of CR remains inconclusive considering the small number of studies and patients included in the analysis comparing early and delayed CR.

Acknowledgment

We thank American Journal Experts (AJE) for English language editing.

Disclosure

The authors report no conflicts of interest in this work.

References

- Jensen LO, Terkelsen CJ, Horváth-Puhó E, et al. Influence of multivessel disease with or without additional revascularization on mortality in patients with ST-segment elevation myocardial infarction. *Am Heart J*. 2015;170(1):70–78.
- Liu KL, Lin SM, Chang CH, Chen YC, Chu PH. Plasma angiopoietin-1 level, left ventricular ejection fraction, and multivessel disease predict development of 1-year major adverse cardiovascular events in patients with acute ST elevation myocardial infarction - a pilot study. *Int J Cardiol*. 2015;182:155–160.
- Levine GN, Bates ER, Blankenship JC, et al. 2015 ACC/AHA/SCAI Focused Update on Primary Percutaneous Coronary Intervention for Patients With ST-Elevation Myocardial Infarction: An Update of the 2011 ACCF/AHA/SCAI Guideline for Percutaneous Coronary Intervention and the 2013 ACCF/AHA Guideline for the Management of ST-Elevation Myocardial Infarction: A Report of the American College of Cardiology/American Heart Association Task Force on Clinical Practice Guidelines and the Society for Cardiovascular Angiography and Interventions. *Circulation*. 2016;133(11):1135–1147.
- Ibanez B, James S, Agewall S, et al. 2017 ESC Guidelines for the management of acute myocardial infarction in patients presenting with ST-segment elevation: The Task Force for the management of acute myocardial infarction in patients presenting with ST-segment elevation of the European Society of Cardiology (ESC). *Eur Heart J*. 2018;39(2):119–177.
- Hutton B, Salanti G, Caldwell DM, et al. The PRISMA extension statement for reporting of systematic reviews incorporating network meta-analyses of health care interventions: checklist and explanations. *Ann Intern Med*. 2015;162(11):777–784.
- Higgins JP, Altman DG, Gøtzsche PC, et al. The Cochrane Collaboration's tool for assessing risk of bias in randomised trials. *BMJ*. 2011;343:d5928.
- Dersimonian R, Laird N. Meta-analysis in clinical trials. *Control Clin Trials*. 1986;7(3):177–188.
- Higgins JP, Thompson SG, Deeks JJ, Altman DG. Measuring inconsistency in meta-analyses. *BMJ*. 2003;327(7414):557–560.
- Egger M, Davey Smith G, Schneider M, Minder C. Bias in meta-analysis detected by a simple, graphical test. *BMJ*. 1997;315(7109):629–634.
- Thorlund K, Engström J, Wetterslev J, Brok J, Imberger G, Gluud C. User manual for Trial Sequential Analysis (TSA). Available from: http://www.ctu.dk/tsa/files/tsa_manual.pdf. Accessed April 24, 2017.
- Wetterslev J, Thorlund K, Brok J, Gluud C. Trial sequential analysis may establish when firm evidence is reached in cumulative meta-analysis. *J Clin Epidemiol*. 2008;61(1):64–75.
- Mills EJ, Thorlund K, Ioannidis JP. Demystifying trial networks and network meta-analysis. *BMJ*. 2013;346:f2914.
- Dias S, Sutton AJ, Ades AE, Welton NJ. Evidence synthesis for decision making 2: a generalized linear modeling framework for pairwise and network meta-analysis of randomized controlled trials. *Med Decis Making*. 2013;33(5):607–617.
- Cooper NJ, Sutton AJ, Lu G, Khunti K. Mixed comparison of stroke prevention treatments in individuals with nonrheumatic atrial fibrillation. *Arch Intern Med*. 2006;166(12):1269–1275.
- Brooks SP, Gelman A. General methods for monitoring convergence of iterative simulations. *J Comput Graph Stat*. 1998;7:434–455.
- van Valkenhoef G, Lu G, de Brock B, Hillege H, Ades AE, Welton NJ. Automating network meta-analysis. *Res Synth Methods*. 2012;3(4):285–299.
- Dias S, Welton NJ, Caldwell DM, Ades AE. Checking consistency in mixed treatment comparison meta-analysis. *Stat Med*. 2010;29(7–8):932–944.
- Salanti G, Ades AE, Ioannidis JP. Graphical methods and numerical summaries for presenting results from multiple-treatment meta-analysis: an overview and tutorial. *J Clin Epidemiol*. 2011;64(2):163–171.
- Woods BS, Hawkins N, Scott DA. Network meta-analysis on the log-hazard scale, combining count and hazard ratio statistics accounting for multi-arm trials: a tutorial. *BMC Med Res Methodol*. 2010;10:54.
- Dias S, Sutton AJ, Welton NJ, Ades AE. Evidence synthesis for decision making 3: heterogeneity--subgroups, meta-regression, bias, and bias-adjustment. *Med Decis Making*. 2013;33(5):618–640.
- di Mario C, Mara S, Flavio A, et al. Single vs multivessel treatment during primary angioplasty: results of the multicentre randomised HEpa-coat for cuLPrit or multivessel stenting for Acute Myocardial Infarction (HELPAMI) Study. *Int J Cardiovasc Intervent*. 2004;6(3–4):128–133.
- Wald DS, Morris JK, Wald NJ, et al. Randomized trial of preventive angioplasty in myocardial infarction. *N Engl J Med*. 2013;369(12):1115–1123.
- Gershlick AH, Khan JN, Kelly DJ, et al. Randomized trial of complete versus lesion-only revascularization in patients undergoing primary percutaneous coronary intervention for STEMI and multivessel disease: the CvLPRIT trial. *J Am Coll Cardiol*. 2015;65(10):963–972.
- Hamza M, Mahmoud N, Elgendy IY. A randomized trial of complete versus culprit-only revascularization during primary percutaneous coronary intervention in diabetic patients with acute ST elevation myocardial infarction and multivessel disease. *J Interv Cardiol*. 2016;29(3):241–247.
- Smits PC, Abdel-Wahab M, Neumann FJ, et al. Fractional flow reserve-guided multivessel angioplasty in myocardial infarction. *N Engl J Med*. 2017;376(13):1234–1244.
- Ghani A, Dambrink JH, van 't Hof AW, Ottervanger JP, Gosselink AT, Hoorntje JC. Treatment of non-culprit lesions detected during primary PCI: long-term follow-up of a randomised clinical trial. *Neth Heart J*. 2012;20(9):347–353.
- Hlinomaz O, Groch L, Polokova K. *PRAGUE 13: Multivessel PCI Failed to Best Culprit-Vessel PCI After STEMI*. Paris: EuroPCR; 2015.
- Ochala A, Smolka GA, Wojakowski W, et al. The function of the left ventricle after complete multivessel one-stage percutaneous coronary intervention in patients with acute myocardial infarction. *J Invasive Cardiol*. 2004;16(12):699–702.
- Roman ST, Vladimir IG, Alexey VP, Olga LB, Leonid SB. Six month results of randomized clinical trial: multivessel stenting in primary percutaneous coronary intervention and staged revascularization for ST-elevation myocardial infarction patients with second generation drug eluting stents. *Clin Med Res*. 2014;3(5):125–129.
- Politi L, Sgura F, Rossi R, et al. A randomised trial of target-vessel versus multi-vessel revascularisation in ST-elevation myocardial infarction: major adverse cardiac events during long-term follow-up. *Heart*. 2010;96(9):662–667.
- Engström T, Kelbæk H, Helqvist S, et al. Complete revascularisation versus treatment of the culprit lesion only in patients with ST-segment elevation myocardial infarction and multivessel disease (DANAMI-3 – PRIMULTI): an open-label, randomised controlled trial. *Lancet*. 2015;386(9994):665–671.

32. Maamoun W, Elkhayat N, Elarasy R. Safety and feasibility of complete simultaneous revascularization during primary PCI in patients with STEMI and multi-vessel disease. *Eur Heart J*. 2011;63(1):39–43.
33. Ijsselmuiden AJ, Ezechiels J, Westendorp IC, et al. Complete versus culprit vessel percutaneous coronary intervention in multivessel disease: a randomized comparison. *Am Heart J*. 2004;148(3):467–474.
34. Dambrink JH, Debrauwere JP, van 't Hof AW, et al. Non-culprit lesions detected during primary PCI: treat invasively or follow the guidelines? *EuroIntervention*. 2010;5(8):968–975.
35. Henriques JP, Hoehers LP, Råmunddal T, et al. Percutaneous intervention for concurrent chronic total occlusions in patients with STEMI: the EXPLORE trial. *J Am Coll Cardiol*. 2016;68(15):1622–1632.
36. Guo WQ, Li L, Su Q. Meta-analysis of strategies for patients with multivessel disease undergoing percutaneous coronary intervention: does the timing of staged procedures matter? *JACC Cardiovasc Interv*. 2017;10(11):1180–1181.
37. Kim I, Kim MC, Jeong HC, et al. Optimal timing of percutaneous coronary intervention for nonculprit vessel in patients with ST-segment elevation myocardial infarction and multivessel disease. *Korean Circ J*. 2017;47(1):36–43.
38. Iqbal MB, Nadra IJ, Ding L, et al. Culprit vessel versus multivessel versus in-hospital staged intervention for patients with ST-segment elevation myocardial infarction and Multivessel disease: stratified analyses in high-risk patient groups and anatomic subsets of nonculprit disease. *JACC Cardiovasc Interv*. 2017;10(1):11–23.
39. Thiele H, Akin I, Sandri M, et al. PCI strategies in patients with acute myocardial infarction and cardiogenic shock. *N Engl J Med*. 2017;377(25):2419–2432.
40. Stone GW, Maehara A, Lansky AJ, et al. A prospective natural-history study of coronary atherosclerosis. *N Engl J Med*. 2011;364(3):226–235.
41. Trelle S, Reichenbach S, Wandel S, et al. Cardiovascular safety of non-steroidal anti-inflammatory drugs: network meta-analysis. *BMJ*. 2011;342:c7086.
42. Park CH, Jung YS, Nam E, Eun CS, Park DI, Han DS. Comparison of efficacy of prophylactic endoscopic therapies for postpolypectomy bleeding in the colorectum: a systematic review and network meta-analysis. *Am J Gastroenterol*. 2016;111(9):1230–1243.
43. Altman DG, Bland JM. Absence of evidence is not evidence of absence. *BMJ*. 1995;311(7003):485.
44. Elgendy IY, Mahmoud AN, Kumbhani DJ, Bhatt DL, Bavry AA. Complete or culprit-only revascularization for patients with multivessel coronary artery disease undergoing percutaneous coronary intervention: a pairwise and network meta-analysis of randomized trials. *JACC Cardiovasc Interv*. 2017;10(4):315–324.
45. Tarantini G, D'Amico G, Brener SJ, et al. Survival after varying revascularization strategies in patients with ST-segment elevation myocardial infarction and multivessel coronary artery disease: a pairwise and network meta-analysis. *JACC Cardiovasc Interv*. 2016;9(17):1765–1776.
46. Moher D, Liberati A, Tetzlaff J, et al. The PRISMA Group (2009). Preferred Reporting Items for Systematic Reviews and Meta-Analyses: The PRISMA Statement. *PLoS Med*. 2009;6(7):e1000097.

Clinical Epidemiology

Publish your work in this journal

Clinical Epidemiology is an international, peer-reviewed, open access, online journal focusing on disease and drug epidemiology, identification of risk factors and screening procedures to develop optimal preventative initiatives and programs. Specific topics include: diagnosis, prognosis, treatment, screening, prevention, risk factor modification,

Submit your manuscript here: <https://www.dovepress.com/clinical-epidemiology-journal>

Dovepress

systematic reviews, risk and safety of medical interventions, epidemiology and biostatistical methods, and evaluation of guidelines, translational medicine, health policies and economic evaluations. The manuscript management system is completely online and includes a very quick and fair peer-review system, which is all easy to use.