

Assessing awareness and knowledge of hypertension in an at-risk population in the Karen ethnic rural community, Thasongyang, Thailand

Myo Nyein Aung^{1,2}
Thaworn Lorga²
Janthila Srikrajang²
Nongluk Promtingkran²
Suchart Kreuangchai²
Wilawan Tonpanya²
Phatchanan Vivarakanon²
Puangpet Jaiin²
Nara Praipaksin³
Apiradee Payaprom⁴

¹Department of Public Health, Graduate School of Medicine, Juntendo University, Tokyo, Japan; ²Boromarajonani College of Nursing Nakhon Lampang (BCNLP), Lampang, Thailand; ³Baan Rekati Health Station, Thasongyang, Thailand; ⁴Thasongyang Hospital, Thailand

Correspondence: Myo Nyein Aung
Department of Public Health,
Juntendo University School of Medicine,
Hongo 2-1-1, Bunkyo-ku, Tokyo, 113-8421, Japan
Tel +81 3 5802 1049
Fax +81 3 3814 0305

or

Research Coordinating Unit,
Boromarajonani College of Nursing
Nakhon Lampang (BCNLP),
268 Parkam Road, Tambol Hauwieng,
Muang District, Lampang,
52000, Thailand
Tel +66 5422 6254
Fax +66 5422 5020
Email dr.myonyeinaung@gmail.com

Background: Hypertension is currently a global health concern. Rural and minority populations are increasingly exposed to risk factors as a result of urbanization, leading to hypertension and cardiovascular disease. We conducted a survey in the rural Karen community in Thasongyang District, Tak Province, Thailand, with the aims of determining: the distribution of blood pressure across different age groups; the prevalence of hypertension and other risk factors for cardiovascular diseases (CVDs), including diabetes, smoking, sedentary lifestyle, and excess alcohol use; knowledge and awareness of hypertension as a disease; and knowledge and awareness of risk factors for hypertension among the population at risk.

Methods: This was a community-based, cross-sectional survey of 298 rural Karen residents. A set of questionnaires assessing lifestyle-related health risk behaviors and awareness and knowledge of hypertension were used. Blood pressure, fasting plasma glucose, weight, height, and waist circumference were measured.

Results: Median systolic and diastolic blood pressures were 110 (range 100–120) mmHg and 70 (range 60–80) mmHg, respectively. High blood pressure was observed in more than 27% of the population, with 15% being hypertensive and 12% being prehypertensive. Multinomial logistic regression analysis showed that people in the Karen community who were aware of hypertension were less likely to be current smokers (odds ratio [OR] 0.53, confidence interval [CI] 0.29–0.97) and those with primary school education were more likely to be aware of hypertension than those who did not have a primary school education (OR 6.5, CI 1.9–22.24). Overall, our survey showed that less than half of the Karen community had such knowledge and awareness.

Conclusion: It is urgently necessary to promote knowledge, awareness, and health literacy among the ethnic Karen tribes to prevent hypertension and associated CVDs.

Keywords: hypertension, Karen, smoking, awareness, knowledge, CVDs

Introduction

Hypertension is a worldwide risk factor for cardiovascular disease burden and mortality.¹ It is a disease related to risky health behaviors, including smoking, poor diet, overweight and obesity, alcohol consumption, physical inactivity and occupational lifestyle. The perception of hypertension by the individual also plays an important role in changing lifestyle and risky health behaviors.² Some risk factors for hypertension are modifiable, such as smoking, diet, and overweight, whereas some are not modifiable, such as old age and genetic predisposition. Changing modifiable risk factors may result in a reduced burden of hypertension, and people have to know that they are at risk of hypertension to be able to make voluntary lifestyle changes. However, there are many barriers to such awareness

in rural and minority populations, including lack of formal school education, communication gaps, and inaccessibility to routine health education programs. Many studies have reported the prevalence of hypertension and its risk factors, but few have paid attention to the prevalence of knowledge and awareness about these risk factors in their study populations.

To perform this study, we approached the ethnic Karen minority in a rural Thai community, which is still naïve regarding health promotion interventions specifically designed for minority populations. The aims of this pilot study were to determine: the distribution of blood pressure across the age groups; the prevalence of hypertension and other risk factors for cardiovascular disease, such as diabetes, smoking, physical inactivity, and alcohol consumption; knowledge and awareness of hypertension; and knowledge and awareness of risk factors for hypertension among the at-risk population in the Karen community.

Materials and methods

The data for this study were collected in Karen village, which has a population of 700, in Thasongyang District, Tak Province, the most north-western district of Thailand, where the narrow Moei river forms the border between Myanmar and Thailand. It is a heavily forested and mountainous area, in which the study site village was located and composed of hamlets scattered on the hilltops. The study population comprised a convenience sample of 298 adult Karen Thai citizens aged over 30 years. Most of the participants were illiterate. The Karen is one of the hill tribes in Thailand, and constitutes one of the indigenous populations in Myanmar living along the Thai-Myanmar border.³

This was a cross-sectional study in which fasting plasma glucose levels, waist circumference, body weight, height, body mass index (BMI), and blood pressure were measured prospectively. Questionnaires administered by an interviewer were used to survey sociodemographic factors, lifestyle-related risk factors, and knowledge and awareness about hypertension.

The study was conducted between June 1, 2011 and September 30, 2011, and was approved by the ethics committee of Boromarajonani College of Nursing Nakhon Lampang, Lampang, Thailand. The aims of the study and its protocol were thoroughly explained to participants, and verbal informed consent was obtained. The analysis was planned and started in September 2011 and carried out until May 2012.

Blood pressure

Blood pressure was measured after at least 15 minutes of rest. Systolic and diastolic blood pressure was measured on two

occasions, 15 minutes apart, for each study participant, by a community nurse using a sphygmomanometer. The first measurement was cross-checked with a second measurement to identify hypertensive individuals. Hypertension was defined as either systolic blood pressure ≥ 140 mmHg or diastolic pressure ≥ 90 mmHg.⁴ Prehypertension was defined as a systolic pressure of 120–139 mmHg or a diastolic pressure of 80–89 mmHg, consistent with the definition of higher than normal blood pressure in the Thai guidelines.^{4,5}

Fasting plasma glucose levels

Fasting plasma glucose measurements were performed at the Thasongyang hospital laboratory after an 8-hour overnight fast. Prediabetes was defined as a fasting plasma glucose of 100–125 mg% and diabetes as ≥ 126 mg%.^{6,7}

Body mass index and waist circumference

Body weight was measured by public health staff using a standard measuring scale. BMI was calculated as the ratio of body weight in kilograms divided by the square of height in meters (kg/m^2). According to Asian and Thai cutoff values, a BMI of 23–25 is considered overweight, BMI 25–27 as preobesity, and BMI ≥ 27 as obesity.^{8–10} The abdominal waist circumference was measured at the umbilicus level using a measuring tape.¹¹ Pregnant women and subjects with ascites were not included in the study. A waist circumference more than 80 cm was considered to be abnormal in women and more than 90 cm was considered to be abnormal in men, according to Thailand guidelines.⁶

Lifestyle-related risk behaviors

Current smokers were defined as being regular smokers at the time of survey. Exsmokers were those who had been smokers but had stopped smoking for at least 6 months prior to the survey. Nonsmokers were people who had never smoked. Current alcohol drinkers were those who had consumed any type of alcoholic drink regularly or irregularly during the previous year. Exdrinkers were those who had not consumed alcohol in the year prior to the survey. Teetotalers were those who had never consumed alcohol previously. We divided the participants into two groups according to their work-related physical activity. Most of the participants were farmers, and were classified as physically active. A sedentary lifestyle was defined as working seated for most working hours or being housebound with little physical movement.

Questionnaires

A set of questionnaires were developed by consensus among researchers at the Boromarajonani College of Nursing

Nakhon Lampang and at the Thasongyang hospital. The questionnaires were carefully designed to assess the participants' knowledge of hypertension and their awareness of being at risk for hypertension. The questionnaires were written clearly in the Thai language and then translated into the Karen language by a researcher who could speak both languages fluently. The interviewer completed the questionnaires according to responses of the participants.

Statistical analysis

Continuous variables are presented as the mean and standard deviation or as the median and interquartile range based on normality of the data distribution. Stata version 11 (Stata Corporation, College Station, TX) was used for data management and analysis. Statistical significance was defined as $P < 0.05$ with a 95% confidence interval (CI). Multinomial logistic regression analysis was used to assess the association between awareness of hypertension and smoking status and/or school education.

Results

Demographic characteristics

The sample population comprised Karen adults of mean age 45 (range 35–55) years. Median systolic blood pressure was 110 mmHg and median diastolic blood pressure was 70 mmHg. The median fasting plasma glucose level was 88 mg%. The average BMI of the sample population was 20.54. Female participants comprised 59% of the sample. More than 90% of participants lacked a formal school education. Most of the participants (87.92%) were farmers (Table 1).

Blood pressure levels

Median systolic blood pressure in the age groups 30–40 years, 40–50 years, 50–60 years, and >60 years were 100 (interquartile range 100–110), 110 (100–120), 120 (100–128.5), and 120 (100–130) mmHg, and diastolic blood pressure 70 (60–70), 70 (70–80), 70 (65–80), and 70 (70–80) mmHg, respectively (Figure 1). High blood pressure was observed in more than 25% of the population, with 12% being prehypertensive and 15% being hypertensive (Table 2). A higher range of systolic blood pressure was observed in individuals aged 50–60 years and those aged 60 years and older than in individuals aged younger than 40 years. Systolic and diastolic blood pressure for each age group is shown in Figure 1. Hypertension was found in 16% of males and 14% of females. The prevalence of hypertension in the different age groups was 9% in those aged 30–40 years, 16% in those aged 40–50 years, 17% in those aged 50–60 years, and 23% in those older than 60 years.

Table 1 Characteristics of the sample population (n = 298)

Characteristic	n	Percentage
Number	298	
Age (years) (median, IQR)	45 (35–55)	
Systolic BP (median, IQR)	110 (100–120)	
Diastolic BP (median, IQR)	70 (60–80)	
BMI (kg/m ²) (median, IQR)	20.54 (18.73–22.89)	
Fasting plasma glucose (mg%, median, IQR)	88 (81–95)	
Age group, years		
30–40	116	38.93
40–50	66	22.15
50–60	64	21.48
>65	52	17.45
Gender		
Male	122	40.94
Female	176	59.06
Race		
Karen	298	100
Education		
School education	27	9.31
No school education	263	90.69
Occupation		
Farmers	262	87.92
Daily wage earner	13	4.36
Government service	1	0.35
Housewife	10	3.36
Unknown	12	4.03

Abbreviations: BMI, body mass index; BP, blood pressure; IQR, interquartile range.

Cardiometabolic risk factors and health risk behaviors

Fasting plasma glucose screening revealed that 16.17% of the population had abnormally high fasting plasma glucose levels, with 3.96% in the diabetic range and 13.09% in the prediabetic range. Thirty percent of the study population had a BMI above 23 which is the threshold for overweight in the Thai guidelines, and 17.79 had a BMI over 25. Persons at risk

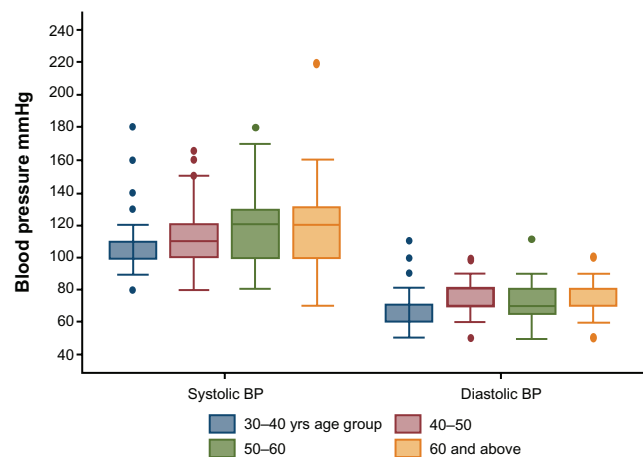


Figure 1 Distribution of systolic and diastolic blood pressure by age group in the sample population of the Karen ethnic community, Thasongyang, Thailand (n = 298).

Table 2 Distribution of risk factors for hypertension and knowledge of risk factors in the at-risk population (n = 298)

Questionnaires Risk factors and categories	n	(%)	Assessment of knowledge*	
			Those who knew they were at risk/correct answer (%)	Those who did not know they were at risk/incorrect answer (%)
"Smoking people tend to have hypertension"				
Overall	298		54.03	38.59
Current smoker	202	67.79	55.45	38.12
Exsmoker	20	6.71	35.00	55.00
Nonsmoker	67	22.48	59.70	38.81
"Overweight people are more likely to have hypertension"				
Overall	298		51.68	40.27
BMI ≥ 25	53	17.79	54.72	40.48
BMI ≥ 23 and <25	35	11.74	34.29	48.57
BMI < 23	210	70.47	53.81	33.96
Within normal WC	264	88.59	54.17	37.88
Abnormal WC	34	11.41	32.35	58.82
"Drinking alcohol is a risk factor for hypertension"				
Overall	298		52.01	40.27
Current drinker	147	49.33	51.7	40.14
Exdrinker	38	12.75	44.74	50.00
Teetotaler	103	34.56	57.28	39.81
"Old age is a risk factor for hypertension"				
Overall	298		41.61	51.01
Age 30–40 years	116	38.93	43.10	48.28
Age 40–50 years	66	22.15	39.39	54.55
Age 50–60 years	64	21.48	45.31	48.44
Age > 60 years	52	17.45	36.54	55.77
"I am at risk of hypertension"				
Overall	298		5.03	87.58
BP < 120/80 mmHg	216 [#]	72.48	3.7	90.74
BP 120/80–139/89 mmHg	37	12.42	10.81	72.97
BP ≥ 140/90 mmHg	45	15.10	6.67	84.44
"I am at risk of diabetes"				
Overall	298			
FPG < 100 mg%	249	85.56	2.01	89.16
FPG ≥ 100–125 mg%	39	13.09	2.56	92.31
FPG ≥ 126 mg%	10	3.36	0	100
"Hypertension is a noncommunicable disease"	276		22.46	77.54
"Hypertension needs lifelong treatment"	276		32.61	67.39
"Normal blood pressure 120/80 mmHg"	274		44.53	55.47
"Hypertension means BP ≥ 140/90 mmHg"	276		43.48	56.52
"High-salt diet can cause hypertension"	276		57.61	42.39
"Stress can lead to hypertension"	274		55.11	44.89
"Excess coffee and tea can lead to hypertension"	276		42.39	57.61
"Regular exercise can prevent hypertension"	276		44.57	55.43

Notes: *Know and do not know percentages were calculated based on a sample of 298. Response rate was not 100% in all questionnaires. Missing responses were analyzed as missing. Response rate was more than 93% on average. [#]Three of 216 persons with normal blood pressure had controlled hypertension on medical treatment.

Abbreviations: BP, blood pressure, FPG, fasting plasma glucose; WC, waist circumference.

by virtue of a BMI above 23, fasting plasma glucose more than 100 mg%, systolic blood pressure above 120 mmHg, and diastolic pressure above 80 mmHg, are identified in the two-way spike diagram shown in Figure 2. Being farmers and manual workers, they had a physically active lifestyle. Only

3.72% reported a sedentary lifestyle and nearly 70% of the population were smokers (Figure 3). The smoking rate was 76.23% in males and 61.93% in females. More than half of the population consumed alcohol (61.48% males and 40.91% females).

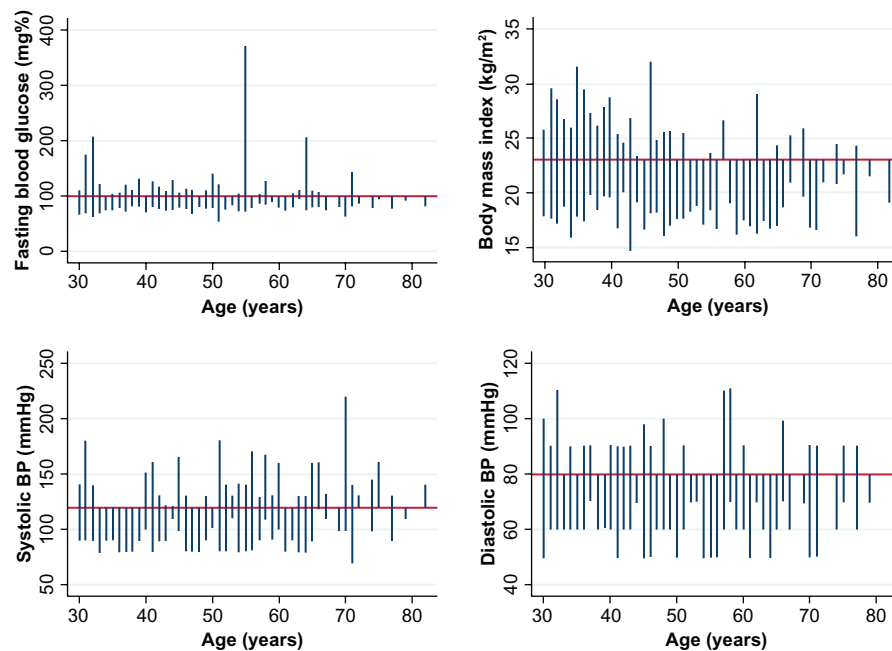


Figure 2 Two-way spike plot diagram showing distribution of persons at risk according to blood pressure, fasting blood glucose, and body mass index in the sample population, ($n = 298$).

Notes: The cutoffs were a body mass index of 23 kg/m², fasting blood sugar of 100 mg%, systolic blood pressure 120 mmHg and diastolic blood pressure 80 mmHg.

Awareness of hypertension

Almost half of the participants responded that they had never heard of hypertension, more than 80% answered that they did not fully understand what hypertension was, 97% did not know if they had high blood pressure, 91.96% did not notice whether their relatives had hypertension, and 95% thought they were not at risk of hypertension (Figure 4). Only 20% of participants had had their blood pressure checked in the previous year. Table 2 summarizes risk factor exposure in the study sample and knowledge about risk factors in the at-risk population.

Smoking

In total, 67.79% of participants were current smokers, 6.71% were exsmokers and 23.18% were nonsmokers, as shown in Figure 3. Among the current smokers, 38.12% did not know that smoking was a risk factor for hypertension (Table 2).

Overweight

The survey of BMI showed that 17.79% had a BMI > 25 and 11.74% had a BMI of 23–25. Forty percent of overweight individuals did not know that being overweight is a risk factor for hypertension (Table 2).

Alcohol consumption

For alcohol consumption, 49.33% of the sample admitted to being current drinkers and 12.75% reported being exdrinkers

(Figure 3). More than 40% did not know that alcohol is a risk factor for hypertension (Table 2).

Advancing age

More than 40% of participants were over 40 years of age. However, more than half of this age group did not know that advancing age is a risk factor for hypertension (Table 2).

Diabetes

On screening, 16.45% of the participants had abnormally high fasting plasma glucose levels. All participants in the diabetic range of fasting plasma glucose and 92.31% of participants with prediabetes did not know that they were at risk of diabetes.

Blood pressure and disease-specific knowledge about hypertension

High blood pressure was detected in 27.52% of participants, with 15.10% being hypertensive and 12.42% being prehypertensive. Most of the hypertensive (84.44%) and prehypertensive (72.97%) participants did not know that they had hypertension risk. (Table 2). Most (77.54%) did not know that hypertension is a non-communicable disease or that it needs lifelong treatment (67.39%). About half of the sample population lacked disease-specific knowledge about hypertension, such as values in the normal and high blood pressure

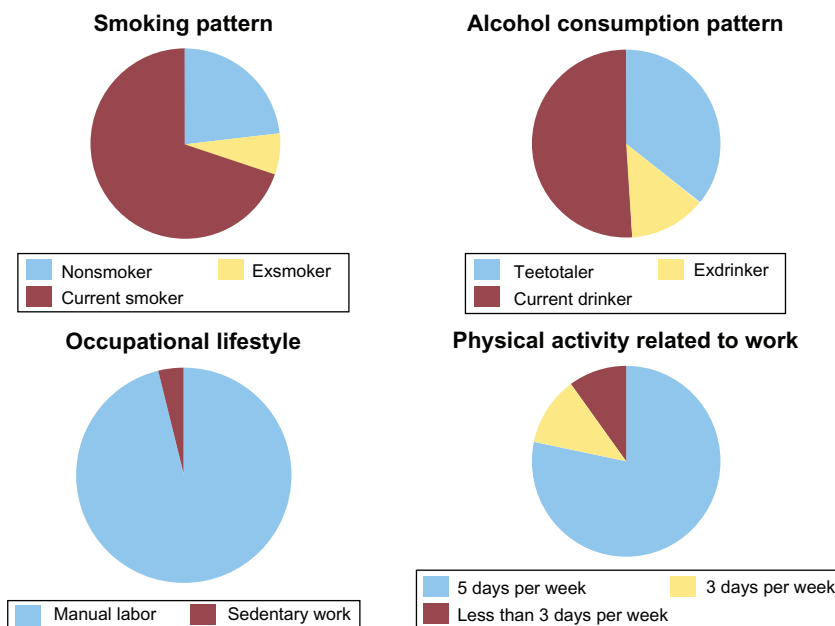


Figure 3 Health risk behavior and lifestyle-related risk factors among the Karen ethnic population in Thasongyang, Thailand (n = 298).

Notes: Current smokers comprised 67.79% of the overall population, current alcohol drinkers comprised 49.33%, 3.7% had a sedentary occupation, and 10.4% reported low physical activity (ie, physical activity until sweating on fewer than three days per week).

range or the risk factors for hypertension, such as a high-salt diet, excess coffee and tea, and a stressful lifestyle (Table 2). Most members of the Karen community had a physically active occupation. However, 55.43% of the participants did not know that regular exercise helps to prevent hypertension.

Association between schooling and health education on hypertension

The question “have you ever heard of hypertension?” was responded to with “yes” by 57.28% of participants and “no” by 41.82% (Figure 4). Further analysis by multinomial logistic regression analysis showed that people who had heard of hypertension were less likely to be current smokers (odds ratio [OR] 0.53, CI 0.29–0.97, Table 3). An answer of “ever heard” or “never heard” of hypertension was significantly associated with attainment of primary school education. A school education was positively associated with health education about hypertension (OR 6.5, CI 1.9–22.2, Table 4).

Discussion

Hypertension is a growing global health problem,¹² with a rapidly increasing prevalence in developing countries in Asia.^{13,14} Hypertension is one of the major cardiovascular diseases, and is a major risk factor for other cardiovascular diseases, such as stroke and ischemic heart disease.^{14,15} We conducted a survey of blood pressure, prevalence of hypertension, risk factors for cardiovascular disease, and people’s awareness of those risk factors in the rural Karen community in Thasongyang District, Thailand.

Nowadays, the Thai community is exposed to a variety of health risk factors, such as obesity (BMI ≥ 25 in 34.2%), insufficient physical inactivity (19.2%), smoking (39.8% in males and 3.4% in females), and alcohol consumption (32%), leading to an increasing prevalence of hypertension and cardiovascular disease.^{16,17} Being less urbanized, the prevalence of these risk factors in the Karen community was expected to be low. We observed a lower prevalence

Table 3 Influence of health education about hypertension on smoking risk behavior

Health awareness	n	Exsmokers		Current smoker	
		% (n)	OR (95% CI)	% (n)	OR (95% CI)
“I have ever heard of hypertension”					
No	116	7.76 (9)	1.00	75 (87)	1.00
Yes	156	6.41 (10)	0.50 (0.17–1.43)	65.38 (102)	0.53 (0.29–0.97)

Abbreviations: OR, odds ratio by multinomial logistic regression; CI, confidence interval.

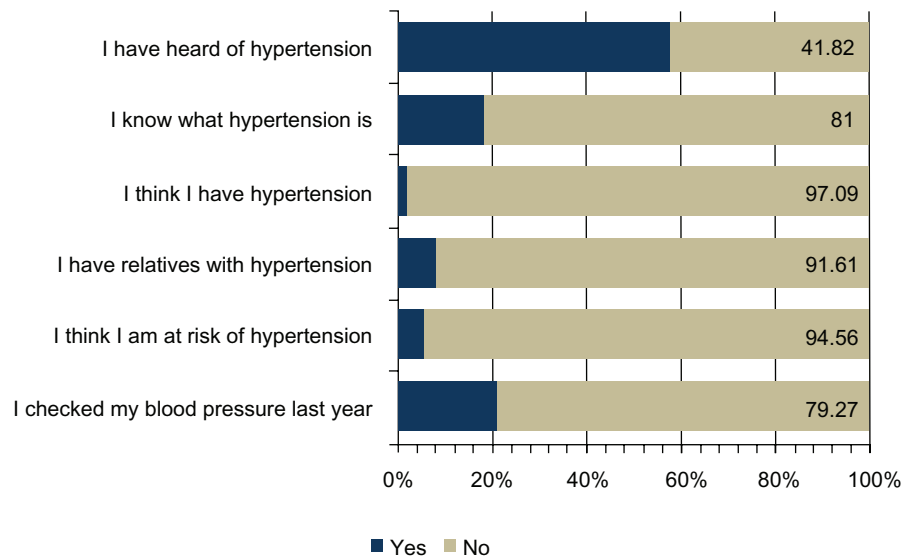


Figure 4 Assessment of awareness about hypertension in the Karen population.

Notes: The response rate was not 100% in all questionnaires. The man response rate was more than 93%.

(15.10%) of hypertension (blood pressure $\geq 140/90$ mmHg) in the Karen community compared with the Thailand national prevalence of hypertension of 34% in 2008.¹⁸ As already reported in the literature, high blood pressure becomes increasingly common with advancing age¹³ (Figure 1). The prevalence of overweight in the Karen population sample was 17.79%, which is less than the Thailand national prevalence of 34.2%,¹⁹ and reflects the physically active farming occupations of the study participants.

Other risk factors were also identified in our study sample. Alarmingly, the smoking rate was very high at 67.79%, which is higher than Thailand's national smoking rate, both among men (76.23% versus 39.8%) and women (61.93% versus 3.4%).¹⁷ Alcohol use was reported by half of the study population. These risk factors also contribute to the increasing burden of hypertension and consequent cardiovascular disease.

A similarly high smoking rate (88%) has been reported for the Nicobarese aborigines in India in 2011, with the prevalence of alcohol consumption and overweight/obesity being 54% and 37%, respectively, and a 50.5% reported prevalence for hypertension.²⁰ Without appropriate intervention, the Karen community is heading towards a similar prevalence of hypertension.

We identified a considerable prevalence of prehypertension and prediabetes in the Karen community.^{21,22} Moreover, awareness of hypertension among already hypertensive individuals was very poor (Table 2). The high smoking rate identified could lead to hypertension and a substantial cardiovascular disease burden in the near future.

There has been a recent report of the benefits of restoring normal blood pressure at the stage of prehypertension in a developed setting.²² However, in a rural setting, lifestyle intervention would be a more feasible strategy to prevent hypertension in persons at risk. In the Karen community, the most prevalent risk behavior was smoking, followed by alcohol consumption (Figure 3). The prevalence rates for obesity and diabetes in this community were not very high. Moreover, most of the participants reported a physically active lifestyle (Figure 3). Therefore, an intervention strategy focused on tobacco control and smoking cessation is urgently needed, along with an observational study of smokers in the Karen community.

The findings of the current study indicate that awareness of hypertension was less than 50% among persons at risk, and most of those at risk of hypertension were not aware of their risk. Similar epidemiological findings of poor awareness have also been reported for rural populations in Thailand, China, and India, as well as neighboring Asian countries.^{23–26} To reverse the trend of increasing risk and

Table 4 Association of school education and health education about hypertension

School education	n	Answer "yes" to have you ever heard of hypertension	
		% (n)	OR (95% CI)
No	244	54.10 (132)	1.00
Yes	26	88.46 (23)	6.50 (1.90–22.24)

Abbreviations: OR, odds ratio by multinomial logistic regression analysis; CI, confidence interval.

prevent the consequences of hypertension and cardiovascular disease, community awareness should be promoted in a timely manner.²³

Awareness of hypertension and smoking versus school education

Further analysis showed that health knowledge about hypertension was protective against smoking. The more people knew about hypertension, the less they tended to smoke (Table 3). Moreover, there was a significant association between level of school education and knowledge and awareness of hypertension (Table 4). This finding suggests an effective intervention for cardiovascular health promotion in the Karen community. Most of the study population lacked primary school education and could not read and write in the Thai language. Health education material needs to be provided in the native Karen language to reach the population at risk, including the elderly. Intervention to upgrade the literacy rate in these minority people would also be necessary. Health knowledge about hypertension and cardiovascular disease can be delivered in an educational program.

Limitations

Because this was a pilot study conducted with limited resources, it has some shortcomings. People in the study site villages live in clusters of houses on hilltops. Even though it was a community-based study, the participants were fit enough to walk to the study center for data collection, whereas those who were sick and bed-ridden could not attend. Moreover, advocates for health promotion are more likely to participate in such studies. These factors might have led to an underestimation of the prevalence of hypertension and overestimation of health knowledge and awareness about the disease in this rural community. Further, the age distribution in the study contained a higher proportion of middle-age individuals, so this study finding would be interpreted in reference to its domain in the baseline characteristic table.

Conclusion

Despite the limitations, this study provides an insight to the epidemiological patterns of risk factors, risk behaviors, and risk awareness regarding hypertension and cardiovascular diseases in the rural Karen ethnic minority at the Thai–Myanmar border. Smoking is a major prevalent risk factor for hypertension in the Karen community. Awareness of hypertension in the population at risk was alarmingly low. Promoting public education in such rural communities

would be beneficial for raising community awareness and changing health risk behaviors. The results of the current study may be useful for devising an interventional strategy for prevention of the cardiovascular disease epidemic in such rural communities.

Authors' contributions

Thaworn Lorga and Myo Nyein Aung were lead authors who designed the study. All authors contributed to data collection, data management, and the research process. Myo Nyein Aung analyzed the data, interpreted the results, and wrote the manuscript. All the authors reviewed and commented to finalize the manuscript.

Disclosure

The authors report no conflicts of interest in this work.

References

1. World Health Organization: Cardiovascular diseases: Key messages to protect heart health. 2011; Available from: http://www.who.int/cardiovascular_diseases/en/. Accessed August 22, 2011.
2. Kusuma Y. Perceptions on hypertension among migrants in Delhi, India: a qualitative study. *BMC Public Health*. 2009;9(1):267.
3. Neiman A, Soh E, Sutan P. Karen cultural profile, 2008. Available from: <http://ethnomed.org/culture/karen/karen-cultural-profile>. Accessed October 20, 2011.
4. Thai Hypertension Society. Guidelines in the treatment of hypertension, 2008. Available from: <http://www.thaihypertension.org/2008guideline.pdf>. Accessed April 1, 2012.
5. US Department of Health and Human Services. Hypertension and prehypertension, 2011. Available from: <http://www.foh.hhs.gov/NYCU/hypertension.asp>. Accessed April 1, 2012.
6. Aekplakorn W, Bunnag P, Woodward M, et al. A risk score for predicting incident diabetes in the Thai population. *Diabetes Care*. 2006;29(8):1872–1877.
7. [No authors listed]. Diagnosis and classification of diabetes mellitus. *Diabetes Care*. 2004;27 Suppl 1:S5–S10.
8. Thaikruea L, Seetamanotch W, Seetamanotch S. Appropriate cut-off level of BMI for screening in Thai adults. *J Med Assoc Thai*. 2006;89(12):2123–2128.
9. Low S, Chin MC, Ma S, Heng D, Deurenberg-Yap M. Rationale for redefining obesity in Asians. *Ann Acad Med Singapore*. 2009;38(1):66–69.
10. World Health Organization. Global database on body mass index; BMI classification. Available from: http://www.who.int/bmi/index.jsp?introPage=intro_3.html. Accessed April 1, 2012.
11. Ross R, Berentzen T, Bradshaw AJ, et al. Does the relationship between waist circumference, morbidity and mortality depend on measurement protocol for waist circumference? *Obes Rev*. 2008;9(4):312–325.
12. Sliwa K, Stewart S, Gersh BJ. Hypertension: a global perspective. *Circulation*. 2011;123(24):2892–2896.
13. Whelton PK, He J, Muntner P. Prevalence, awareness, treatment and control of hypertension in North America, North Africa and Asia. *J Hum Hypertens*. 2004;18(8):545–551.
14. World Health Organization. Global status report on noncommunicable diseases, 2010. Available from: http://www.who.int/nmh/publications/ncd_report2010/en/. Accessed April 1, 2012.
15. World Health Organization. Health statistics and health information systems: Global health risks, 2011. Available from: www.who.int/healthinfo/global.../global_health_risks/en/index.html. Accessed April 1, 2012.

16. World Health Organization. Global health observatory (GHO): risk factors, 2011. Available from: http://www.who.int/gho/ncd/risk_factors/en/index.html. Accessed April 1, 2012.
17. World Health Rankings. Health Profile: Thailand, 2011. Available from: <http://www.worldlifeexpectancy.com/country-health-profile/thailand>. Accessed April 1, 2012.
18. World Health Organization. Raised blood pressure, 2008. Available from: http://gamapserver.who.int/gho/interactive_charts/ncd/risk_factors/blood_pressure_prevalence/atlas.html. Accessed December 20, 2011.
19. World Health Organization. Overweight and obesity prevalence, 2011. Available from: http://gamapserver.who.int/gho/interactive_charts/ncd/risk_factors/overweight_obesity/atlas.html. Accessed December 20, 2011.
20. Manimunda SP, Sugunan AP, Benegal V, Balakrishna N, Rao MV, Pesala KS. Association of hypertension with risk factors and hypertension related behaviour among the aboriginal Nicobarese tribe living in Car Nicobar Island, India. *Indian J Med Res*. 2011;133(3):287–293.
21. Levitan EB, Song Y, Ford ES, Liu S. Is nondiabetic hyperglycemia a risk factor for cardiovascular disease?: a meta-analysis of prospective studies. *Arch Intern Med*. 2004;164(19):2147–2155.
22. Sipahi I, Swaminathan A, Natesan V, Debanne SM, Simon DI, Fang JC. Effect of antihypertensive therapy on incident stroke in cohorts with prehypertensive blood pressure levels. *Stroke*. 2012;43(2):432–440.
23. Sun Z, Zheng L, Detrano R, et al. Incidence and predictors of hypertension among rural Chinese adults: results from Liaoning Province. *Ann Fam Med*. 2010;8(1):19–24.
24. Gupta R, Pandey RM, Misra A, et al. High prevalence and low awareness, treatment and control of hypertension in Asian Indian women. *J Hum Hypertens*. September 1, 2011. [Epub ahead of print.]
25. Howteerakul N, Suwannapong N, Sittilerd R, Rawdaree P. Health risk behaviours, awareness, treatment and control of hypertension among rural community people in Thailand. *Asia Pac J Public Health*. 2006;18(1):3–9.
26. Son PT, Quang NN, Viet NL, et al. Prevalence, awareness, treatment and control of hypertension in Vietnam—results from a national survey. *J Hum Hypertens*. 2012;26(4):268–280.

International Journal of General Medicine

Publish your work in this journal

The International Journal of General Medicine is an international, peer-reviewed open-access journal that focuses on general and internal medicine, pathogenesis, epidemiology, diagnosis, monitoring and treatment protocols. The journal is characterized by the rapid reporting of reviews, original research and clinical studies across all disease areas.

Submit your manuscript here: <http://www.dovepress.com/international-journal-of-general-medicine-journal>

Dovepress

A key focus is the elucidation of disease processes and management protocols resulting in improved outcomes for the patient. The manuscript management system is completely online and includes a very quick and fair peer-review system. Visit <http://www.dovepress.com/testimonials.php> to read real quotes from published authors.