

# SCIENTIFIC REPORTS



OPEN

## Factors Generating Glucose Degradation Products In Sterile Glucose Solutions For Infusion: Statistical Relevance Determination Of Their Impacts

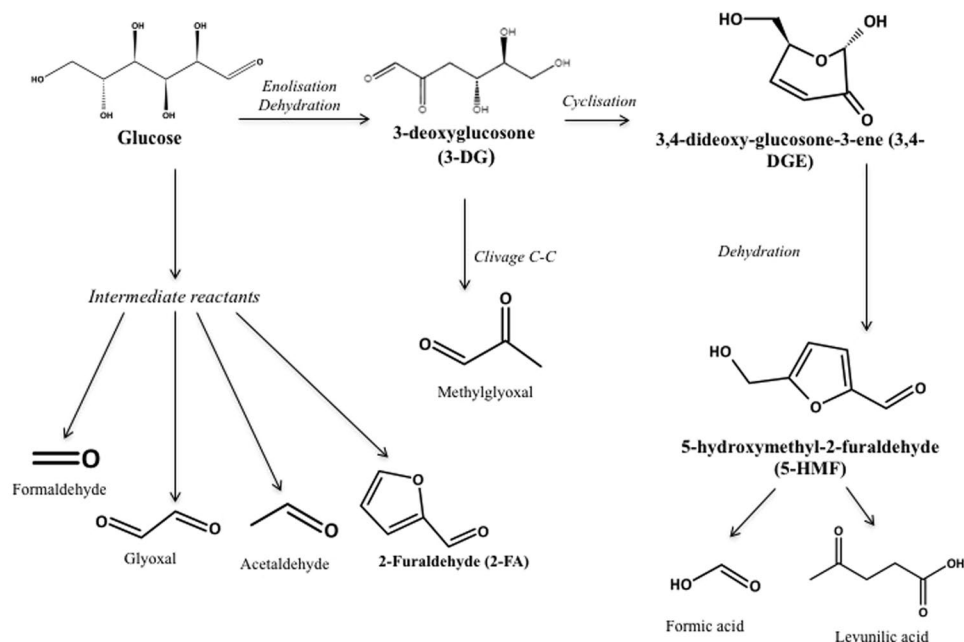
J. Haybrard<sup>1,2</sup>, N. Simon<sup>1,2</sup>, C. Danel<sup>2</sup>, C. Pinçon<sup>3</sup>, C. Barthélémy<sup>2</sup>, F. J. Tessier<sup>4</sup>, B. Décaudin<sup>1,2</sup>, E. Boulanger<sup>4</sup> & P. Odou<sup>1,2</sup>

Sterilising glucose solutions by heat promotes the generation of a large number of glucose degradation products (GDPs). It has been shown that high levels of GDPs may result in Advanced Glycation End products that have an impact on cellular homeostasis and health in general. If data is available for peritoneal dialysis solutions, little has been published for glucose infusion fluids. It is essential to identify the parameters causing the formation of GDPs and so limit the risk of exposing patients to them. After quantifying both 5-hydroxymethyl-2-furfural, considered as an important indicator of degradation, and 2-furaldehyde, an ultimate GDP of one degradation pathway, in marketed solutions, the aim of this work is to build a model integrating all the parameters involved in the formation rates of these two GDPs: supplier, glucose amount, container material, oxygen permeability coefficient and time-lapse since manufacture. Our results show a good logarithmic relationship between GDP formation rates and time-lapse since manufacture for both GDPs. The amount of GDPs in the glucose solutions for infusion depends on the initial glucose amount, the polymer of the container, the time elapsed since manufacturing and the supplier.

Sterile glucose solutions are commonly used in hospital settings as hydration solutions<sup>1</sup> or diluents for injectable drugs<sup>2</sup> as well as for peritoneal dialysis<sup>3</sup>. Considered as inexpensive, safe sources of energy and harmless substances, they are marketed in concentrations ranging from 2.5 to 70 g/100 mL, packed in various containers such as bags, flasks and vials. Primary packaging can be made of materials such as plastic polymers (polyvinyl chloride, polyolefins, multilayers...) or glass. As they are used for intravenous (IV) administration, these solutions are sterile. According to the European Pharmacopoeia<sup>4</sup>, the main sterilisation technique used at the end of their production process is moist heat through a combination of temperature, pressure and time to obtain an adequate microbial lethality rate.  $F_0$  can be described most simply as the equivalent time required in minutes at 121 °C to produce the same microbiological killing effect as the process used<sup>5</sup>.

Heating glucose solutions is known to promote the generation of a large number of glucose degradation products (GDPs)<sup>1,6,7</sup>. Several of these GDPs, such as 3-deoxyglucosone (3-DG), 3,4-dideoxyglucosone-3-ene (3,4-DGE), glyoxal, methylglyoxal, 5-hydroxymethylfurfural (5-HMF), 2-furaldehyde (2-FA), formaldehyde and acetaldehyde, have previously been identified in peritoneal dialysis and infusion fluids<sup>3,8,9</sup>. It has already been demonstrated that GDPs are highly reactive precursors of Advanced Glycation End products (AGEs)<sup>6,10,11</sup> in proteins. AGEs result from a chemical reaction when reduced carbohydrates (such as glucose) react with amino acids or nucleotides. In 1912, Louis Maillard was the first to describe this non-enzymatic reaction known as the "Maillard reaction"<sup>12</sup> which is at the origin of a class of products formed spontaneously in nature or in living organisms (e.g. glycosylated haemoglobin)<sup>13</sup>. Among the GDPs cited above, 5-HMF and 2-FA are considered as

<sup>1</sup>CHU Lille, Institut de Pharmacie, F-59000, Lille, France. <sup>2</sup>Univ. Lille, EA 7365 – GRITA – Groupe de Recherche sur les formes Injectables et les Technologies Associées, F-59000, Lille, France. <sup>3</sup>Univ. Lille, EA 2694, 59000, Lille, Cedex, France. <sup>4</sup>Univ. Lille, Inserm, CHU Lille, U995 - LIRIC - Lille Inflammation Research International Center, F-59000, Lille, France. Correspondence and requests for materials should be addressed to N.S. (email: [nicolas.simon@univ-lille2.fr](mailto:nicolas.simon@univ-lille2.fr))



**Figure 1.** Main glucose degradation pathways. This figure synthesises the main degradation pathways of glucose under high temperature storage conditions<sup>3,10</sup> or sterilisation<sup>16</sup>.

important indicators of degradation<sup>14,15</sup> and, according to Linden *et al.*<sup>3</sup> and Thornalley *et al.*<sup>10</sup>, they may appear in the glucose degradation process under high temperature storage conditions and according to Ulbright *et al.*<sup>16</sup> under sterilising conditions (Fig. 1).

Although precise thresholds of toxicity are not yet known for GDPs and AGEs administered to chronically-ill patients, it has been shown that high levels of GDPs and AGEs have an impact on cell homeostasis<sup>1,9,17–19</sup>, are involved in oxidative stress<sup>20,21</sup>, are associated with cellular inhibition<sup>22</sup>, induce apoptosis in human leukocytes and renal epithelial cells<sup>1,18,23</sup>, cause degradation of mesothelial cells and peritoneal membrane characteristics<sup>6,23–25</sup>, have an impact on the cardiovascular system<sup>21,26,27</sup>, are associated with an increase in cardiovascular morbidity<sup>28</sup> and a decline in renal function<sup>29</sup> or cause kidney damage<sup>1,8,30</sup>. Other studies have shown that the accumulation of AGEs in patients suffering from diabetes mellitus can lead to microvascular complications<sup>6</sup> such as diabetic retinopathy<sup>20</sup> or diabetic vascular complications<sup>31</sup>. Very high levels of 5-HMF may lead to acute toxicity<sup>16</sup>.

Little data is at present available on the quantification of GDPs in glucose solutions for intravenous administration<sup>1,14,15,32</sup>. Many questions remain unanswered, particularly regarding the risks involved in the chronic administration of sterile glucose solutions or those associated with chemical interactions with new protein-structured drugs (e.g. antibodies, biosimilars...), which raise the issue of drug glycation before administration<sup>33,34</sup>. Many factors have previously been identified as factors contributing to the formation of GDPs in infusion bags: sterilisation process<sup>5</sup>, storage conditions<sup>7</sup> or amount of glucose<sup>32</sup>. However, some others have never been tested (e.g. the container) and their impact should be assessed in order to understand how to limit of the formation of GDPs.

Thus, the first objective of this work is to quantify actual amounts of both 5-HMF and 2-FA in marketed glucose IV solutions from different suppliers on the French market and to compare with known toxicological data. The second objective is to build a model integrating all parameters influencing the formation rates of these two GDPs.

## Results

**Measurement of two GDPs in marketed solutions.** Both 5-HMF and 2-FA were identified and quantified in each tested solution (Tables 1 and 2). The amounts of 5-HMF vary from  $0.20 \pm 0.00$  mg for the G5% 50 mL of supplier B to  $41.21 \pm 0.08$  mg for G50% 1000 mL of the supplier E. For 2-FA, the variation is observed from  $2.42 \pm 0.02$   $\mu$ g for G5% 50 mL of supplier E to  $654.28 \pm 1.04$   $\mu$ g for G15% 1000 mL for supplier D'. An heterogeneity in GDP amounts could be also observed for the same glucose concentration for the same supplier. For example, for the concentration in glucose of 2.5% for supplier A, the amounts range from  $0.82 \pm 0.00$  mg to  $3.57 \pm 0.03$  mg for 5HMF, and from  $12.01 \pm 0.23$   $\mu$ g to  $257.85 \pm 3.58$   $\mu$ g for 2-FA. This shows the variability of GDP amounts in our samples.

The mean GDP amounts in all our samples were  $6.70 \pm 0.58$  mg and  $114.32 \pm 9.00$   $\mu$ g for 5HMF and 2FA, respectively. To compare our data with that in the literature, all amounts were converted into GDP concentrations in each container, giving  $13.82 \pm 0.79$  and  $0.23 \pm 0.01$   $\mu$ g/mL for 5-HMF and 2-FA, respectively.

**Analysis of the influencing parameters.** The ANCOVA model showed a good linear relationship between the logarithm of GDP formation rate and time-lapse since manufacture for both GDPs. The simulated

G (%)	Supp.	Vol. (mL)	Cont.	5-HMF (mg)	2-FA ( $\mu$ g)	G (%)	Supp.	Vol. (mL)	Cont.	5-HMF (mg)	2-FA ( $\mu$ g)
2.5	A	500	Bag	<b>0.82 ± 0.00</b>	<b>12.01 ± 0.13*</b>	5	B	500	Flask	1.92 ± 0.01	48.64 ± 0.27
	A	1000	Bag	<b>3.57 ± 0.02</b>	257.85 ± 2.07		B	500	Flask	3.84 ± 0.01	97.76 ± 0.46
	A	1000	Bag	2.81 ± 0.02	<b>220.07 ± 0.62</b>		B	1000	Flask	5.60 ± 0.01	150.14 ± 0.12
	B	1000	Flask	1.24 ± 0.01	30.73 ± 0.29*		C	250	Bag	1.33 ± 0.00	25.11 ± 0.34
	E	1000	Bag	2.67 ± 0.00	66.44 ± 1.30		C	250	Bag	<b>1.03 ± 0.01</b>	<b>20.69 ± 0.06</b>
5	A	50	Bag	<b>0.32 ± 0.00</b>	3.40 ± 0.02		C	500	Bag	3.84 ± 0.01	64.98 ± 0.39
	A	50	Bag	0.33 ± 0.00	<b>3.22 ± 0.01</b>		C	500	Flask	<b>4.91 ± 0.01</b>	<b>94.23 ± 2.32</b>
	A	50	Bag	0.35 ± 0.00	3.37 ± 0.01		C	500	Bag	3.57 ± 0.02	68.58 ± 0.38
	A	50	Bag	0.53 ± 0.00	4.46 ± 0.02		C	500	Bag	3.31 ± 0.04	54.35 ± 0.08
	A	100	Bag	0.70 ± 0.01	10.12 ± 0.09		D'	125	Vial	<b>0.48 ± 0.00</b>	<b>11.90 ± 0.02</b>
	A	100	Bag	0.75 ± 0.01	8.36 ± 0.02		D'	125	Vial	1.01 ± 0.01	20.47 ± 0.17
	A	100	Bag	0.93 ± 0.01	10.53 ± 0.05		D'	250	Vial	2.24 ± 0.01	38.86 ± 0.03
	A	100	Bag	0.98 ± 0.01	10.13 ± 0.01		D'	250	Vial	2.44 ± 0.01	46.09 ± 0.13
	A	250	Bag	0.87 ± 0.00	19.25 ± 0.02		D'	500	Vial	3.54 ± 0.02	62.20 ± 0.02
	A	250	Bag	1.98 ± 0.00	73.36 ± 0.03		D'	500	Vial	3.67 ± 0.01	58.25 ± 0.21
	A	250	Bag	1.08 ± 0.00	25.58 ± 0.02		D'	1000	Vial	5.54 ± 0.01	90.57 ± 0.81
	A	500	Bag	1.87 ± 0.01	33.88 ± 0.14		D'	1000	Vial	<b>9.03 ± 0.02</b>	<b>152.87 ± 0.68</b>
	A	500	Bag	2.52 ± 0.02	41.55 ± 0.10		E	50	Bag	<b>0.35 ± 0.00</b>	<b>2.42 ± 0.02*</b>
	A	500	Bag	<b>5.56 ± 0.00</b>	<b>58.66 ± 0.20</b>		E	100	Bag	0.65 ± 0.00	7.92 ± 0.03
	B	50	Flask	<b>0.20 ± 0.00</b>	<b>3.59 ± 0.06</b>		E	100	Bag	1.16 ± 0.00	7.77 ± 0.02
	B	100	Flask	0.24 ± 0.00	4.26 ± 0.15*		E	100	Bag	1.26 ± 0.00	7.97 ± 0.02
	B	100	Flask	<b>26.57 ± 0.02</b>	<b>425.43 ± 1.86</b>		E	100	Bag	1.30 ± 0.00	7.38 ± 0.08
	B	250	Flask	0.88 ± 0.00	21.39 ± 0.06		E	500	Bag	3.66 ± 0.02	38.90 ± 0.17
	B	250	Flask	0.99 ± 0.00	29.43 ± 0.23		E	500	Bag	<b>6.81 ± 0.02</b>	<b>47.20 ± 0.70</b>
	B	250	Flask	0.99 ± 0.01	29.27 ± 0.11						

**Table 1.** Amounts of GDPs in the marketed solutions concerning glucose concentrations of 2.5 and 5%. Each sample was analysed three times. Amounts in glucose degradation products are given as mean  $\pm$  standard error, expressed in mg for 5-HMF and in  $\mu$ g for 2-FA. G (%): glucose concentration in g/100 ml; Supp.: supplier; Vol.: volume; Cont.: container. Extreme values for one supplier are in italic/bold. \*Out of accuracy profile.

and experimental values are very close:  $r^2 = 0.966$  ( $p < 0.0001$ ) and  $r^2 = 0.962$  ( $p < 0.0001$ ) for 5-HMF and 2-FA, respectively (Fig. 2).

The ANCOVA analysis shows the significant influence of the following parameters on the formation rates of both GDPs: storage time (5HMF: 0.293,  $p = 0.012$  and 2FA: 0.618  $p < 0.0001$ ), initial glucose amount in container (5HMF: 2.456,  $p = 0.005$  and 2FA: 4.085,  $p < 0.001$ ), and permeability to oxygen (1.821 and 1.397,  $p < 0.001$ , for 5HMF and 2FA, respectively).

The influence of container material differs from one material to another. Figure 3 reveals a similar profile on its impact on the formation rate of both 5-HMF and 2-FA. From this data, it is possible to classify container materials according to their ability to limit GDP generation. When considering the influence of container material, GDP formation rate is 1) lower with both PP and glass; 2) not or only slightly influenced with PE, PE/PP and PVC; and 3) higher with multilayer PP/PA/PE.

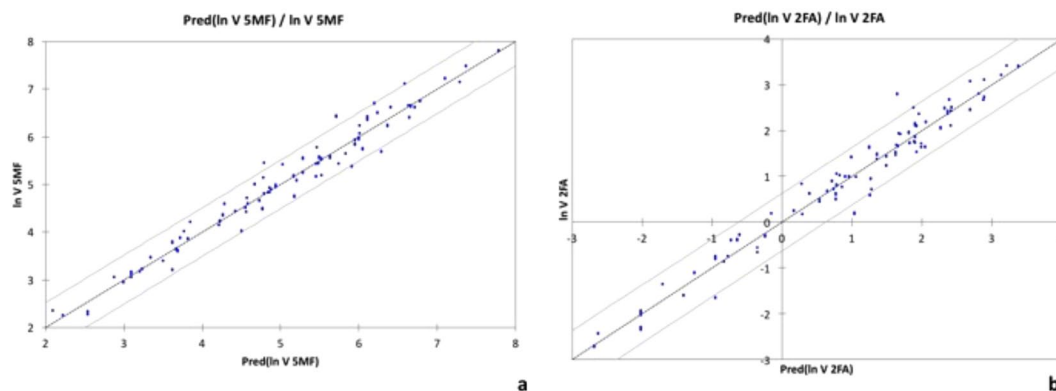
Similarly, the supplier effect was analysed. However, for one supplier (supplier D), two different sterilising conditions were used: one for the plastic container (D) and another for the glass container (D'). For the statistical analysis, we therefore decided to consider this supplier as two different ones (D and D'). So as not to limit the "supplier effect" to only a "container effect", the ANCOVA analysis also checked the absence of multicollinearity. Results are presented in Fig. 4. Differences in sterilisation techniques have also been highlighted. From this data, suppliers can also be classified according to their ability to limit GDP generation. Suppliers A and D seemed to contribute less to GDP formation (Fig. 4) whereas suppliers C and B seemed to generate more. No significant impact was shown for the other suppliers.

## Discussion

Characterisation of GDPs in injectable glucose solutions has become essential due to increased knowledge about the risks associated with their use. Their presence has already been described, particularly in PD fluids and particularly for 5-HMF. Indeed in this study, both 5-HMF and 2-FA were identified and quantified in all marketed solutions tested. In previously published studies, 5-HMF concentrations ranged from 0.25 to 18.4 mg/L in infusion fluids for glucose concentrations from 2.5 to 30%<sup>1</sup>, or from 7.94 to 36.46 mg/L for glucose concentrations from 10 to 50%<sup>32</sup>. No data is available for 2-FA in infusion fluids, only in peritoneal dialysis fluids. 2-FA concentrations ranged from 38.43 to 134.52  $\mu$ g/L for glucose concentrations varying from 1.36 to 3.86%<sup>7</sup> and from 105.69 to 297.86  $\mu$ g/L for glucose concentrations varying from 1.5 to 7.5%<sup>3</sup>. These values are close to ours: 1.2 and 75.1 mg/L and 23.4 and 779.9  $\mu$ g/L, for 5-HMF and 2-FA, respectively. The highest values measured in this study for 2-FA, are due to higher glucose concentrations. If only 2.5 and 5% glucose concentrations are taken

G (%)	Supp.	Vol. (mL)	Cont.	5-HMF (mg)	2-FA ( $\mu$ g)	G (%)	Supp.	Vol. (mL)	Cont.	5-HMF (mg)	2-FA ( $\mu$ g)	
10	A	500	Bag	<b><math>3.82 \pm 0.06</math></b>	$104.34 \pm 0.05$	20	E	500	Bag	$21.77 \pm 0.02$	$256.26 \pm 1.62$	
	A	500	Bag	$4.09 \pm 0.03$	<b><math>54.53 \pm 0.08</math></b>		B	500	Flask	$3.84 \pm 0.01$	$257.92 \pm 1.32$	
	A	1000	Bag	<b><math>7.57 \pm 0.07</math></b>	<b><math>122.25 \pm 0.12</math></b>		D'	500	Vial	<b><math>12.67 \pm 0.10</math></b>	<b><math>244.63 \pm 0.44</math></b>	
	B	250	Flask	<b><math>2.46 \pm 0.01</math></b>	<b><math>66.64 \pm 0.07</math></b>		D'	500	Vial	$13.81 \pm 0.10$	$263.25 \pm 0.76$	
	B	250	Flask	<b><math>2.50 \pm 0.01</math></b>	<b><math>86.35 \pm 1.01</math></b>		D'	1000	Vial	<b><math>34.95 \pm 0.22</math></b>	<b><math>601.42 \pm 1.53</math></b>	
	C	250	Flask	<b><math>4.61 \pm 0.01</math></b>	$81.67 \pm 0.10$		E	250	Bag	<b><math>5.27 \pm 0.03</math></b>	<b><math>92.14 \pm 0.38</math></b>	
	C	500	Bag	$5.90 \pm 0.16$	<b><math>72.75 \pm 0.07</math></b>		E	500	Bag	$11.44 \pm 0.00$	$160.09 \pm 0.05$	
	C	500	Bag	<b><math>6.71 \pm 0.02</math></b>	<b><math>95.80 \pm 0.28</math></b>		E	500	Bag	$13.78 \pm 0.06$	$268.44 \pm 1.06$	
	D	250	Bag	<b><math>1.62 \pm 0.01</math></b>	<b><math>28.49 \pm 0.08</math></b>		E	500	Bag	$17.04 \pm 0.06$	$276.70 \pm 0.70$	
	D	250	Bag	$1.77 \pm 0.01$	$29.13 \pm 0.01$		E	500	Bag	<b><math>20.28 \pm 0.12</math></b>	<b><math>329.51 \pm 0.92</math></b>	
	D	250	Bag	<b><math>2.68 \pm 0.03</math></b>	<b><math>36.81 \pm 0.09</math></b>		50	B	500	Vial	$3.84 \pm 0.01$	$147.80 \pm 1.35$
	D'	500	Vial	<b><math>10.06 \pm 0.06</math></b>	<b><math>300.32 \pm 1.01</math></b>			E	1000	Bag	$41.21 \pm 0.08$	$182.68 \pm 3.45$
	D'	500	Vial	<b><math>12.44 \pm 0.14</math></b>	<b><math>338.04 \pm 0.58</math></b>			70	B	500	Flask	$37.27 \pm 0.23$
	E	100	Bag	<b><math>0.70 \pm 0.01</math></b>	<b><math>5.50 \pm 0.05</math></b>							
	E	100	Bag	$1.26 \pm 0.02$	$13.62 \pm 0.03$							
	E	100	Bag	<b><math>1.42 \pm 0.00</math></b>	<b><math>17.30 \pm 0.08</math></b>							
15	D'	500	Vial	<b><math>15.95 \pm 0.37</math></b>	<b><math>337.52 \pm 1.10</math></b>							
	D'	500	Vial	$32.93 \pm 0.63$	$651.83 \pm 0.47$							
	D'	1000	Vial	<b><math>34.81 \pm 0.72</math></b>	<b><math>654.28 \pm 1.04</math></b>							
	E	500	Bag	<b><math>13.21 \pm 0.07</math></b>	<b><math>174.82 \pm 0.70</math></b>							
	E	500	Bag	$13.22 \pm 0.21$	<b><math>145.41 \pm 0.58</math></b>							
	E	500	Bag	<b><math>13.71 \pm 0.27</math></b>	$147.12 \pm 19.05$							

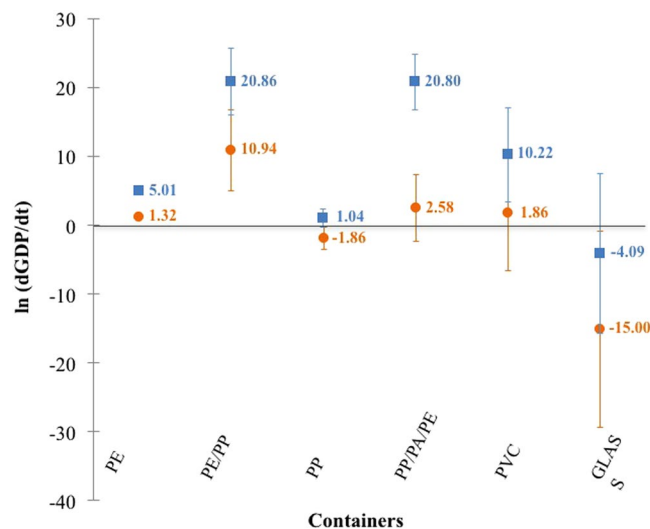
**Table 2.** Amounts of GDPs in the marketed solutions, concerning glucose concentrations of 10, 15, 20, 30, 50 and 70%. Each sample was analysed three times. Amounts in glucose degradation products are given as mean  $\pm$  standard error, expressed in mg for 5-HMF and in  $\mu$ g for 2-FA. G (%): glucose concentration in g/100 ml; Supp.: supplier; Vol.: volume; Cont.: container. Extreme values for one supplier are in italic/bold. \*Out of accuracy profile.



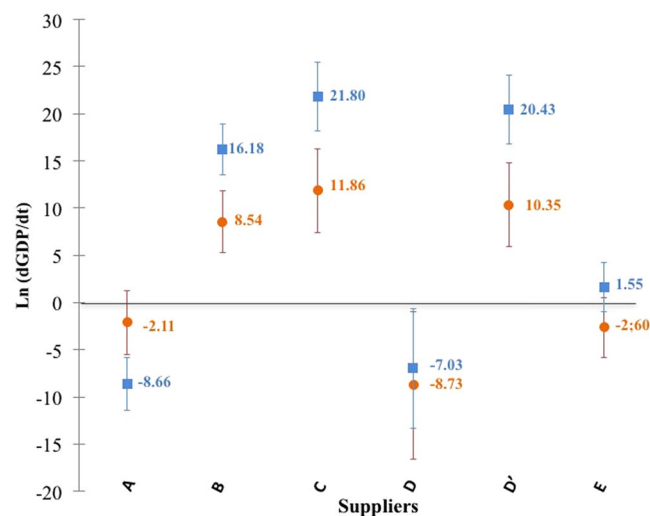
**Figure 2.** Prediction models for 5-HMF generation (a) and 2-FA generation (b). Linear relationship between  $\ln(\text{formation rate of GDP})$  and the prediction of  $\ln(\text{formation rate of GDP})$ . Dots are measured values and continuous grey lines the confidence interval at 95%.

into account, values are similar to those previously published, with 2-FA concentrations varying from 23.5 to 293.6  $\mu$ g/L.

Our results demonstrate that both 5-HMF and 2-FA are present in varying quantities in all injectable glucose solutions currently on the French market. Differences from one supplier to another may be explained by different sterilising processes (temperature, pressure and time of sterilization cycle)<sup>1,6,35,36</sup>. All suppliers confirmed the use of the moist heat method according to the European Pharmacopeia, but some did not provide their protocols. After questioning, it appears that they use different temperatures (111 or 121  $^{\circ}$ C) and  $F_0$  values (11 to 46).  $F_0$  is a combination of time and temperature giving equal energy/bacterial lethality<sup>16</sup>. However, the value alone of  $F_0$  is insufficient; it is important to know the thermodynamic conditions of sterilisation<sup>32</sup>. In their study, Postaire *et al.* demonstrated that the higher the temperature, the higher the GPD formation rate, and independently, the longer the sterilisation time, again the higher the GPD formation rate<sup>32</sup>, which is confirmed in Cook's study<sup>5</sup>. Kjellstrand *et al.* studied five different  $F_0$  values and demonstrated that combining a high temperature with a short



**Figure 3.** Impact of container material on the formation rate of both 5-HMF (■) and 2-FA (●). Error bars indicate standard deviations.

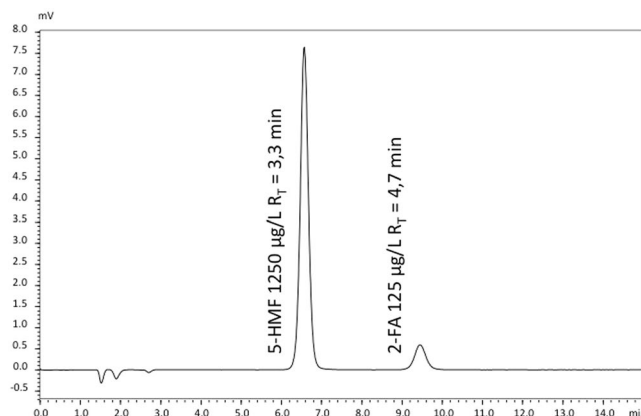


**Figure 4.** Impact of suppliers on the formation rate of both 5-HMF (■) and 2-FA (●). Error bars indicate standard deviations.

sterilisation time limited the formation of GDPs<sup>36</sup>. In our study, only one condition was close to those studied by Cook *et al.*<sup>5</sup>: 5% glucose conditioned in 500 mL glass vials, sterilised at 121 °C at an  $F_0$  value of 20<sup>5</sup>. Applying our equation for a storage time of one month yields an estimated concentration for 5-HMF of 0.662 µg/mL, a value close to previously published results<sup>5</sup>. This confirms the suitability of our model for these conditions.

Apart from sterilisation and storage conditions, we suspected the type of container to be another contributing factor to the formation of GDPs. Indeed, containers with a high coefficient of permeation generate more GDPs than others. This result concurs with previously published data showing that high permeation to oxygen can lead to chemical instability of bag contents, especially for easily oxidisable compounds<sup>37,38</sup>. Our results indicate that choosing materials with low permeation to oxygen could be a means of limiting the formation of both 5-HMF and 2-FA.

Finally, this study demonstrates the heterogeneity of patients' exposure to GDPs according to the glucose solution used. Exposure firstly depends on the solution purchased, which means that it is extremely difficult to determine real exposure to GDPs. To estimate it, we consider that the maximum fluid volume perfused is 2 litres/day<sup>39</sup>. If all infusions are based on glucose, the highest average perfused amount of 5-HMF would be  $25.67 \pm 1.48$  mg/day. Matzi *et al.* showed that an oral daily intake of 720 mg of 5HMF over 10 days had no apparent toxicological effect<sup>40</sup>. The absolute bioavailability of 5-HMF is estimated at 72%<sup>41</sup>, so 720 mg/day oral intake is equivalent to an approximate IV dose of 520 mg/day. This data confirms that patients hospitalised for a short period and receiving dextrose infusions at low volumes are at a low risk of toxicity, as suggested by a previously published study<sup>16</sup>.



**Figure 5.** Chromatogram of a solution containing 5-HMF and 2-FA. The concentrations of 5-HMF and 2-FA are 1250 µg/l and 125 µg/l, respectively ( $R_s = 6.5$ ).

GDP	Range (µg/L)	$r^2$	Slope	y-Intercept	LOD (µg/L)	LOQ (µg/L)
5-HMF	500–2000	0.999	92686.87	−1349.29	36	72
2-FA	50–200	0.988	12.95	7.83	12	24

**Table 3.** Regression parameters, LOD and LOQ for each GDP.

Little data is currently available on toxicity associated with the chronic infusion of these products, especially in particularly fragile populations (e.g. neonates, patients suffering from critical conditions or patients receiving long-term IV therapy with glucose solutions). It has previously been shown that GDPs and AGEs may disrupt cellular homeostasis<sup>1,8,9,11,17,42</sup> or lead to clinical disturbances<sup>1,8,21,26,27,30</sup>, and so further *ex vivo*, *in vivo* and clinical studies are required to establish the toxicity profile of such solutions.

The originality of this work is to indicate that, by using a statistical model, factors other than sterilisation, storage conditions and initial glucose amount may influence the formation of GDPs during storage:

- 1) GDP formation rate is well correlated with storage duration (between 4 and 61 months).
- 2) Oxygen permeability has a significant influence on the formation rate of both GDPs. PP and glass limit the formation of GDPs (Fig. 4). The multilayers PP/PA/PE, PE/PP and PVC are unable to limit or prevent the generation of GDPs. The impact of PE is not significantly different from 0.

To conclude, this work shows that the following factors influence GDP formation: initial amount of glucose, supplier, mean oxygen permeability coefficient, type of container materials and storage duration since manufacture. Until toxicity studies have been carried out on patients, some measures could be applied to reduce their risk of exposure: the use of glucose solutions with low concentrations conditioned in glass vials and stored for only a short period of time.

## Methods

**Chemicals and reagents.** Methanol (HPLC – grade), 100% glacial acetic acid, anhydrous potassium dihydrogenophosphate, 5-HMF and 2-FA were purchased from VWR International S.A.S (Fontenay-sous-Bois, France). Pure water was produced with an ultrapure water system (Ultrapure water, Purelab UHQ, ELGA). Anhydrous glucose was obtained from Inresa (Bartenheim, France).

**Analytical method.** The analyses were carried out by an HPLC system (Shimadzu, Noisiel, France) equipped with an autosampler (SIL-20AC XR) with a 100 µL injection loop, a diode array detector (SPD-M20A) and a system of double flow-rate pump solvent module (LC-20AD XR). A column oven (CTO-20AC) was used to maintain the column (Alltech Apollo™ C<sub>18</sub> column, 5 µm, 150 × 4.6 mm I.D. (Fisher Scientific, Illkirch, France) at 25 °C. All data was analysed with LabSolution software (Shimadzu, France).

The mobile phase consisted of a mixture (10%/90% - v/v) of methanol and phosphate solution (1.5 g, 0.011 mmol for 1 litre) adjusted to pH 2.95 with acetic acid. Flow-rate was set at 2 mL/min. Detection wavelength for both GDPs was fixed at 284 nm following literature guidelines<sup>11</sup>. A chromatogram is depicted in Fig. 5.

Concentrations were chosen for calibration points based on previously published data<sup>1</sup> and results of pre-validation steps in our laboratory. Calibration ranges were 500–2000 µg/L and 50–200 µg/L for 5-HMF and 2-FA, respectively. The method was validated by an analysis of variance (ANOVA). Range for validation assay, regression parameters, limits of detection (LOD) and of quantification (LOQ) were 36 and 12 µg/L, and 72 and 24 µg/L for 5-HMF and 2-FA, respectively. Validation data are summarized in Table 3.

Supplier	N	Conc (%)	Volume (ml)	Type of Container	Type of container material	Time-lapse since manufacture (months)
A	20	2.5–5–10	50–100–250–500–1000	Bag	PE/PA/PP	7–9–10–12–14–15–16–17–20–31–32–33–34–51
B	15	2.5–5–10–30–50–70	50–100–250–500–1000	Flask – Vial	PE - Glass	4–5–6–7–8–11–17–18–25–29–36
C	9	5–10	250–500	Flask – Bag	PE – PP	15–16–18–20–34–43–44
D	3	10	250	Bag	PP	13–19
D'	16	5–10–15–30	125–250–500–1000	Vial	Glass	10–13–15–18–20–23–25–28–31–33–46–50–54–58–61
E	21	2.5–5–10–15–20–30–50	50–100–250–500–1000	Bag	PE/PP - PVC	11–15–16–17–18–20–23–26–29–31–37–41–56

**Table 4.** Description of tested solutions. All suppliers confirmed the use of the moist heat method but some did not provide their protocol: A: Not communicated, B: Not communicated, C:  $F_0 \geq 11$ , D:  $F_0 \geq 15$  (estimated between at 42 and 45), D':  $F_0 \geq 15$  (estimated at 20), E:  $F_0 = 15$ .

A volume of 100  $\mu$ L glucose solution was injected into the HPLC-UV system without pre-treatment with a 100- $\mu$ L injection loop. If after dosing, the back-calculated concentration was outside the validated ranges, the solution was diluted with pure water to reach a concentration within the validated ranges and re-analysed. High glucose concentrations ( $\geq 30$  g/100 ml) were systematically diluted with pure water to avoid injecting too viscous a solution. Each glucose solution was measured in triplicate.

Each concentration measured in each container was transformed into amounts by multiplying the concentration by the container's nominal volume. The nominal volume was used because it is the only volume communicated by all the suppliers. Finally, the GDP rate was determined by dividing the amount by storage duration. For the analysis of glucose infusion fluids, all results were anonymised and are given as mean  $\pm$  standard error.

**Analysis of marketed solutions.** The analysis involved 84 glucose solutions coming from 5 suppliers (Baxter, Lavoisier, MacoPharma, BBraun and Fresenius) at 8 concentrations (2.5, 5, 10, 15, 20, 30, 50 and 70 g/100 mL), 6 volumes (50, 100, 125, 250, 500 and 1000 mL) and in 3 types of containers: bags, flasks and vials. Six different materials: plastic polymers (polyvinyl chloride (PVC), polyethylene (PE), polypropylene (PP), multilayer PP-PE and multilayer PP-polyamide (PA)-PE and glass were used as raw materials for the containers. All solutions were stored from 4 to 61 months at room temperature, in industrial cardboard boxes, in the warehouse of hospital pharmacy, located in the basement of the building. The detail of each solution tested is presented in Table 4.

**Statistical model.** Two factors have been added to those already described in the literature.

- Suppliers (S): A to E (i.e. sterilisation process<sup>5</sup>);
- Initial glucose amounts ( $G_0$ ): 2.5, 5, 6.5, 10, 12.5, 25, 50, 75, 100, 150, 250, 300, 350 and 500g<sup>32</sup>;
- Time-lapse since manufacture ( $t$ ). This parameter was defined as the delay between measurement and manufacturing dates, estimated by subtracting the expiry date from official shelf life<sup>43</sup>. The shelf lives used in this study were validated by each pharmaceutical supplier for each batch. Since permeability to oxygen was suspected to be a prominent factor in the formation of GDPs, we added the following factors to the model:
  - Materials ( $M$ ): PVC, PE, PP, multilayers (PE-PP and PE-PA-PP) and glass;
  - Mean oxygen permeability coefficient ( $P$ ). This parameter was estimated from previously published data<sup>44</sup>. The mean oxygen permeability coefficient for plastic flasks made of PE was estimated at  $25 \times 10^{-10}$  ( $\text{cm}^3 \cdot \text{mm}) / (\text{cm}^2 \cdot \text{s} \cdot \text{cm of mercury})$ <sup>44</sup>. For bags made of either PA, PVC or PP, it was estimated at  $0.2 \times 10^{-10}$ ,  $0.6 \times 10^{-10}$  and  $8 \times 10^{-10}$  ( $\text{cm}^3 \cdot \text{mm}) / (\text{cm}^2 \cdot \text{s} \cdot \text{cm of mercury})$ , respectively<sup>44</sup>. For glass vials, it was fixed at 0 because glass is gasproof. These oxygen permeability coefficients have been referred to the surface of containers and to atmospheric pressure.

To determine a potential relationship between influencing parameters and GDP formation rate, an analysis of covariance (ANCOVA) model was used. However, the relationship between the two variables must be linear to use the ANCOVA model and this was obtained by logarithmic transformation. The complete model used in this study can be summarised in the following equation:

$$\ln(d\text{GDP}/dt) = C + \alpha \times \ln(G_0) + \beta \times \ln(P) + \gamma \times M + \delta \times S + \epsilon \times I - k \times t \quad (1)$$

where  $G_0$ ,  $P$ ,  $M$ ,  $S$ ,  $t$  are the previously cited parameters and  $I$ , the interaction between the different coefficients.  $\alpha$  is the coefficient for each amount of glucose;  $\beta$ , the coefficient for each case of oxygen permeability;  $\gamma$ , the coefficient for each material;  $\delta$ , the coefficient for each supplier and  $\epsilon$  the coefficient for interaction.

A two-tailed type I error  $< 0.05$  was considered for statistical significance. Analyses were conducted using XLSTAT<sup>®</sup> software (v2014.5.02, Addinsoft, Paris, France).

## References

- Bryland, A. *et al.* Infusion fluids contain harmful glucose degradation products. *Intensive Care Med.* **36**, 1213–1220 (2010).
- Trissel, L. A. *Handbook on Injectable Drugs*. American Society of Health-System Pharmacists, Bethesda, (2011).

3. Linden, T., Cohen, A., Deppisch, R., Kjellstrand, P. & Wieslander, A. 3,4-Dideoxyglucosone-3-ene (3,4-DGE): a cytotoxic glucose degradation product in fluids for peritoneal dialysis. *Kidney Int.* **62**, 697–703 (2002).
4. European Pharmacopoeia, 9.0 Edition. Monograph 5.1.1. Methods of preparation of sterile products. Available at: <http://online.edqm.eu/entry.htm> (2017).
5. Cook, A. P., MacLeod, T. M., Appleton, J. D. & Fell, A. F. HPLC studies on the degradation profiles of glucose 5% solutions subjected to heat sterilization in a microprocessor-controlled autoclave. *J. Clin. Pharm. Ther.* **14**, 189–195 (1989).
6. Linden, T., Forsbäck, G., Deppisch, R., Henle, T. & Wieslander, A. 3-Deoxyglucosone, a promoter of advanced glycation end products in fluids for peritoneal dialysis. *Perit. Dial. Int.* **18**, 290–293 (1998).
7. Kjellstrand, P., Erixon, M., Wieslander, A., Lindén, T. & Martinson, E. Temperature: the single most important factor for degradation of glucose fluids during storage. *Perit. Dial. Int.* **24**, 385–391 (2004).
8. Frischmann, M. *et al.* Development and validation of an HPLC method to quantify 3,4-dideoxyglucosone-3-ene in peritoneal dialysis fluids. *Biomed. Chromatogr.* **23**, 843–851 (2009).
9. Tomo, T. *et al.* Impact of 3,4-dideoxyglucosone-3-ene (3,4-DGE) on cytotoxicity of acidic heat-sterilized peritoneal dialysis fluid. *J. Artif. Organs* **10**, 47–51 (2007).
10. Thornalley, P. J., Langborg, A. & Minhas, H. S. Formation of glyoxal, methylglyoxal and 3-deoxyglucosone in the glycation of proteins by glucose. *Biochem. J.* **344**(Pt 1), 109–116 (1999).
11. Linden, T. *et al.* Glucose degradation products in peritoneal dialysis fluids may have both local and systemic effects: a study of residual fluid and mesothelial cells. *Perit. Dial. Int.* **21**, 607–610 (2001).
12. Hellwig, M. & Henle, T. Baking, ageing, diabetes: a short history of the Maillard reaction. *Angew. Chem. Int. Ed Engl.* **53**, 10316–10329 (2014).
13. Chen, G. & Smith, J. S. Determination of advanced glycation endproducts in cooked meat products. *Food Chem.* **168**, 190–195 (2015).
14. Hung, C. T., Selkirk, A. B. & Taylor, R. B. A chromatographic quality control procedure based on HPLC for 5-hydroxymethylfurfural in autoclaved D-glucose infusion fluids. *J. Clin. Hosp. Pharm.* **7**, 17–23 (1982).
15. Cook, A. P., Macleod, T. M., Appleton, J. D. & Fell, A. F. Reversed-phase high-performance liquid chromatographic method for the quantification of 5-hydroxymethylfurfural as the major degradation product of glucose in infusion fluids. *J. Chromatogr. A* **467**, 395–401 (1989).
16. Ulbricht, R. J., Northup, S. J. & Thomas, J. A. A review of 5-hydroxymethylfurfural (HMF) in parenteral solutions. *Fundam. Appl. Toxicol.* **4**, 843–853 (1984).
17. Sanchez-Niño, M. D. *et al.* 3,4-DGE is cytotoxic and decreases HSP27/HSPB1 in podocytes. *Arch. Toxicol.* **88**, 597–608 (2014).
18. Penélope Catalan, M. *et al.* 3,4-di-deoxyglucosone-3-ene promotes leukocyte apoptosis. *Kidney Int.* **68**, 1303–1311 (2005).
19. Boulanger, E. *et al.* The triggering of human peritoneal mesothelial cell apoptosis and oncosis by glucose and glycoxydation products. *Nephrol. Dial. Transplant. Off. Publ. Eur. Dial. Transpl. Assoc. - Eur. Ren. Assoc.* **19**, 2208–2216 (2004).
20. Kandarakis, S. A., Piperi, C., Topouzis, F. & Papavassiliou, A. G. Emerging role of advanced glycation-end products (AGEs) in the pathobiology of eye diseases. *Prog. Retin. Eye Res.* **42C**, 85–102 (2014).
21. García-López, E., Carrero, J. J., Suliman, M. E., Lindholm, B. & Stenvinkel, P. Risk factors for cardiovascular disease in patients undergoing peritoneal dialysis. *Perit. Dial. Int. J. Int. Soc. Perit. Dial.* **27**(Suppl 2), S205–209 (2007).
22. Linden, T. *et al.* Glucose degradation products in peritoneal dialysis fluids may have both local and systemic effects: a study of residual fluid and mesothelial cells. *Perit. Dial. Int. J. Int. Soc. Perit. Dial.* **21**, 607–610 (2001).
23. Thornalley, P. J. Measurement of protein glycation, glycated peptides, and glycation free adducts. *Perit. Dial. Int. J. Int. Soc. Perit. Dial.* **25**, 522–533 (2005).
24. Cho, K.-H., Do, J.-Y., Park, J.-W., Yoon, K.-W. & Kim, Y.-L. The Effect of Low-GDP Solution on Ultrafiltration and Solute Transport in Continuous Ambulatory Peritoneal Dialysis Patients. *Perit. Dial. Int.* **33**, 382–390 (2013).
25. Park, J. W., Kang, S. H. & Do, J. Y. Effects of low-glucose degradation product solution on peritoneal membrane characteristics in peritoneal dialysis patients: a 3-year follow-up study. *Iran. J. Kidney Dis.* **8**, 58–64 (2014).
26. Himmele, R., Sawin, D.-A. & Diaz-Buxo, J. A. GDPs and AGEs: impact on cardiovascular toxicity in dialysis patients. *Adv. Perit. Dial.* **27**, 22–26 (2011).
27. Müller-Krebs, S. *et al.* Glucose degradation products result in cardiovascular toxicity in a rat model of renal failure. *Perit. Dial. Int. J. Int. Soc. Perit. Dial.* **30**, 35–40 (2010).
28. Cho, Y. *et al.* Baseline serum interleukin-6 predicts cardiovascular events in incident peritoneal dialysis patients. *Perit. Dial. Int. J. Int. Soc. Perit. Dial.* **35**, 35–42 (2015).
29. Müller-Krebs, S. *et al.* Renal toxicity mediated by glucose degradation products in a rat model of advanced renal failure. *Eur. J. Clin. Invest.* **38**, 296–305 (2008).
30. Sarafidis, P. A., Whaley-Connell, A., Sowers, J. R. & Bakris, G. L. Cardiometabolic syndrome and chronic kidney disease: what is the link? *J. Cardiometab. Syndr.* **1**, 58–65 (2006).
31. Chawla, D. *et al.* Role of advanced glycation end product (AGE)-induced receptor (RAGE) expression in diabetic vascular complications. *Microvasc. Res.* **95C**, 1–6 (2014).
32. Postaire, E. *et al.* Various techniques for the routine evaluation of the degradation of glucose in parenteral solutions — a critical study. *J. Pharm. Biomed. Anal.* **5**, 309–318 (1987).
33. Fischer, S., Hoernschemeyer, J. & Mahler, H.-C. Glycation during storage and administration of monoclonal antibody formulations. *Eur. J. Pharm. Biopharm. Off. J. Arbeitsgemeinschaft Pharm. Verfahrenstechnik EV* **70**, 42–50 (2008).
34. Quan, C. *et al.* A study in glycation of a therapeutic recombinant humanized monoclonal antibody: where it is, how it got there, and how it affects charge-based behavior. *Anal. Biochem.* **373**, 179–191 (2008).
35. Erixon, M. *et al.* How to Avoid Glucose Degradation Products in Peritoneal Dialysis Fluids. *Perit. Dial. Int.* **26**, 490–497 (2006).
36. Kjellstrand, P., Martinson, E., Wieslander, A. & Holmquist, B. Development of toxic degradation products during heat sterilization of glucose-containing fluids for peritoneal dialysis: influence of time and temperature. *Perit. Dial. Int.* **15**, 26–32 (1995).
37. Pohloudek-Fabini, R. & Martin, E. [The effect of the gas permeability of plastics on the stability of thiomersal. Part 49: Contributions to problems concerning the use of plastic receptacles for liquid pharmaceuticals (author's transl)]. *Pharm.* **36**, 683–685 (1981).
38. Allwood, M. C. & Kearney, M. C. Compatibility and stability of additives in parenteral nutrition admixtures. *Nutr. Burbank Los Angel. Cty. Calif* **14**, 697–706 (1998).
39. Bernard, L. *et al.* Migration of plasticizers from PVC medical devices: Development of an infusion model. *Int. J. Pharm.* **494**, 136–145 (2015).
40. Matzi, V. *et al.* The impact of preoperative micronutrient supplementation in lung surgery. A prospective randomized trial of oral supplementation of combined alpha-ketoglutaric acid and 5-hydroxymethylfurfural. *Eur. J. Cardio-Thorac. Surg. Off. J. Eur. Assoc. Cardio-Thorac. Surg.* **32**, 776–782 (2007).
41. Obied, T. *In-vitro* metabolism and protein binding of 5-HMF, a potential antisickling agent. *Theses Diss.* (2010).
42. Boulanger, E. *et al.* The triggering of human peritoneal mesothelial cell apoptosis and oncosis by glucose and glycoxydation products. *Nephrol. Dial. Transplant.* **19**, 2208–2216 (2004).
43. Murty, B. S., Kapoor, J. N. & Smith, F. X. Levels of 5-hydroxymethylfurfural in dextrose injection. *Am. J. Hosp. Pharm.* **34**, 205–206 (1977).
44. Reyne, M. *Les Plastiques: Polymères, Transformations et Applications.* Hermes, Paris, **48** (1991).



## Acknowledgements

We thank the Pharmacy supply service at Lille University hospital for their help, in particular Dr. S. Neuville, Dr. I. Walbecq, Dr. C. Cuaz-Perolin.

## Author Contributions

Work conception and design: J.H., N.S. and P.O. Data collection: J.H. Data analysis: J.H., N.S., C.P., P.O. Manuscript writing: J.H., N.S. and P.O. Manuscript reviewing: J.H., N.S., C.D., C.B., F.J.T., E.B., B.D. and P.O. All authors have contributed to the work and approved the final version of the manuscript, as submitted.

## Additional Information

**Competing Interests:** The authors declare that they have no competing interests.

**Publisher's note:** Springer Nature remains neutral with regard to jurisdictional claims in published maps and institutional affiliations.



**Open Access** This article is licensed under a Creative Commons Attribution 4.0 International License, which permits use, sharing, adaptation, distribution and reproduction in any medium or format, as long as you give appropriate credit to the original author(s) and the source, provide a link to the Creative Commons license, and indicate if changes were made. The images or other third party material in this article are included in the article's Creative Commons license, unless indicated otherwise in a credit line to the material. If material is not included in the article's Creative Commons license and your intended use is not permitted by statutory regulation or exceeds the permitted use, you will need to obtain permission directly from the copyright holder. To view a copy of this license, visit <http://creativecommons.org/licenses/by/4.0/>.

© The Author(s) 2017