

REVIEW

Autosomal-dominant Alzheimer's disease: a review and proposal for the prevention of Alzheimer's disease

Randall J Bateman^{1*}, Paul S Aisen^{2†}, Bart De Strooper^{3,4}, Nick C Fox^{5†}, Cynthia A Lemere⁶, John M Ringman^{7†}, Stephen Salloway^{8,9†}, Reisa A Sperling^{10†}, Manfred Windisch¹¹ and Chengjie Xiong^{12†}

Abstract

Autosomal-dominant Alzheimer's disease has provided significant understanding of the pathophysiology of Alzheimer's disease. The present review summarizes clinical, pathological, imaging, biochemical, and molecular studies of autosomal-dominant Alzheimer's disease, highlighting the similarities and differences between the dominantly inherited form of Alzheimer's disease and the more common sporadic form of Alzheimer's disease. Current developments in autosomal-dominant Alzheimer's disease are presented, including the international Dominantly Inherited Alzheimer Network and this network's initiative for clinical trials. Clinical trials in autosomal-dominant Alzheimer's disease may test the amyloid hypothesis, determine the timing of treatment, and lead the way to Alzheimer's disease prevention.

Introduction

Alzheimer's disease (AD) afflicts an estimated 24 million people in the world, with an expected increase to over 80 million people by the year 2040 [1]. AD causes an insidious and progressive loss of cognitive function and independence, taking a heavy personal and financial toll on the patient and the family. Because of the severity and increasing prevalence of the disease in the population, it is urgent that better treatments be developed.

The only identified deterministic factors for the development of AD are the presence of mutations in one of three genes – amyloid precursor protein (*APP*), presenilin 1

(*PSEN1*) or presenilin 2 (*PSEN2*) – or duplication of *APP*. Approximately 50% of people from these kindreds are mutation carriers destined to develop dementia of the Alzheimer's type, generally at an early age (~30 to 50 years). In the present review, we define autosomal-dominant Alzheimer's disease (ADAD) as dominantly inherited AD with pathological confirmation. Other terms, such as familial AD and early-onset AD, may encompass ADAD, but may also include AD from nondominant causes such as the apolipoprotein E4 allele or sporadic Alzheimer's disease (SAD). Although ADAD represents fewer than 1% of all AD cases, it is a critically important area of study because the pathological features of the disease are similar to the more common sporadic form, because causative mutations have known biochemical consequences that are believed to underlie the much more prevalent sporadic form of the disease, and because it is possible to identify and study presymptomatic individuals decades before they are destined to develop clinical disease. The opportunity to determine the sequence of biomarker changes in presymptomatic gene carriers who are destined to develop AD is likely to reveal critical information about the pathobiological cascade that culminates in symptomatic disease.

The realization that AD is a major and growing public health problem with aging populations has added urgency to the search for improved therapeutics. Many proposed treatments for AD currently target slowing or halting of the underlying disease (that is, putative disease-modifying interventions), but they are not likely to reverse the extensive neuronal death already present at the onset of symptoms. For individuals and families at risk for ADAD, such interventions have the potential to delay or even prevent dementia in asymptomatic individuals, in addition to slowing progression in those with symptoms. These at-risk individuals offer a potential proof of concept for presymptomatic disease modification, with implications for AD more generally.

ADAD families have provided important insights into the pathogenesis of AD in the past several decades. Discovery of human genetic mutations has facilitated the

¹Member of the Dominantly Inherited Alzheimer's Network Clinical Trials Committee.

*Correspondence: batemanr@wustl.edu

¹Department of Neurology, Washington University School of Medicine, 660 S. Euclid, Campus Box 8111, St Louis, MO 63110, USA

Full list of author information is available at the end of the article

development of the transgenic animal models used in AD research today. Knowledge of the molecular mechanisms of the identified mutations has catalyzed identification of the causative pathogenic events in AD in humans. Indeed, this avenue of research has provided the most compelling case for a unifying theory of AD.

In addition to contributing to advances in the basic scientific understanding of AD, ADAD families represent an ideal population for preventative and treatment trials for several reasons. First, there is near certainty (~100%) regarding development of the disease with a known mutation that enables prevention studies and increases the power of treating minimally or presymptomatic patients. Second, the approximate age at which symptoms are likely to develop can be predicted in individuals who are completely asymptomatic, allowing therapeutic trials years or decades before clinical onset. Finally, ADAD research participants are highly motivated, relatively young, and have minimal co-morbidities. By engaging those at risk for ADAD, uniquely informative scientific information about disease progression, biomarkers and changes due to therapeutic treatments are expected to lead to advancements in drug development.

Disease-modifying therapeutics have been largely developed with animal models based on human disease-causing mutations. ADAD caused by known mutations most closely resembles those models, and therefore is more likely to respond to disease-modifying treatments. Results from treatment trials in ADAD will bridge cellular and mouse therapeutic research with SAD therapeutic research. Because the clinical and pathological phenotypes of ADAD are similar to the more common late-onset AD, drugs that prove successful in the prevention or delay of dementia for ADAD are likely to provide guidance for future prevention and disease modification in late-onset AD. Successful implementation of prevention and symptomatic studies will therefore inform about the causes of AD and will provide guidance for future therapeutic development.

In the present review, we present historical and current information about ADAD, including: discovery of the genetic mutations; clinical, pathological, imaging and biomarker findings; the explosion of understanding about AD based on basic science studies of genetic mutations and development of AD animal models from the mutations; and an international multicenter effort to understand the cascade of events leading to AD toward future trials to treat – and even prevent – the onset of dementia in those with mutations.

A brief history of autosomal-dominant Alzheimer's disease research

Provocative supportive evidence indicates that Dr Alois Alzheimer's first case may have been ADAD. This case

(August D), described in 1906, was early onset, possibly familial, and from a region of Germany associated with the *PSEN2* Volga-German mutation [2]. The first documented cases of familial AD were identified in early-onset dementia with pathological confirmation [3,4]. Other notable early studies identified pedigrees in which more than 10 individuals over five generations were affected by early-onset AD [5]. Affected individuals developed symptoms before age 60 with progressive amnesia and other signs of cortical cognitive impairment as seen in late-onset SAD [6]. Neuropathological examination of these early cases demonstrated extensive amyloid and neurofibrillary pathology with neuronal loss and gliosis.

In 1963, a case series with early-onset AD in 11 of 26 children with an affected parent and no affected individuals in the pedigree without an affected parent developing the disease suggested that early-onset AD was the result of a fully penetrant autosomal-dominant mutation [7]. The search for a dominant mutation focused on chromosome 21, due to the Alzheimer's-like pathology seen in older patients with Down syndrome (trisomy 21). In 1987, a genetic linkage study in four large ADAD families found a gene locus at 21q11.2 to 21q22.2, but not in the 21q22 region associated with the Down syndrome phenotype [8]. Then, in 1991, a missense point mutation (Val-Ile) at codon position 717 was discovered in the *APP* gene in a single family with linkage to chromosome 21 [9]. This report identified the specific mutation in this family and provided a possible mechanistic link between the *APP* mutations and abnormalities in amyloid processing seen in these families. Most of the variants in *APP* occur between residues 714 and 717 near the putative site for γ -secretase cleavage [10]. At least 38 additional ADAD *APP* mutations have since been identified.

One year after the discovery of mutations in *APP* as a cause of ADAD, four different laboratories identified another locus for ADAD on 14q24 [11-14]. The gene *PSEN1* was cloned 3 years later, encoding the protein presenilin 1 [15]. Presenilin 1 is a highly conserved membrane protein required for γ -secretase to produce amyloid-beta ($A\beta$) from *APP* [16]. Since the initial finding of the *PSEN1* mutation, approximately 180 different mutations that cause ADAD have been identified (<http://www.molgen.ua.ac.be/ADMutations/>). Within a year of cloning *PSEN1*, a gene with substantial nucleotide and amino-acid homology was discovered on the long arm of chromosome 1 in two families [15]. This gene, *PSEN2*, appears to account for only a small percentage of ADAD cases and may be associated with a later age of onset and slower disease progression than mutations in *PSEN1* and *APP*.

The discovery of the genetic causes of ADAD catalyzed research on the relationship of ADAD to SAD. The clinical, imaging, pathologic and biochemical relationships have

Table 1. Comparison of autosomal-dominant Alzheimer's disease with sporadic Alzheimer's disease

Measure	ADAD findings	SAD findings
Clinical presentation	Episodic (recent) memory and judgment impairment in most; seizures and myoclonus not rare	Episodic (recent) memory and judgment impairment in most; seizures rare in early disease, more common in late disease
Atypical presentation	Yes – behavioral presentations; spastic paraparesis	Yes – behavioral and language presentations; posterior cortical atrophy
Age of onset	<60 years for most, can be as early as mid-20s; >60 years rarely reported	>60 years for most; <50 years rarely reported
Duration of illness	Average 6 to 9 years	Average 7 to 10 years
Atrophy – volumetric MRI	Hippocampal atrophy, temporo-parietal cortical loss	Hippocampal atrophy, temporo-parietal cortical loss
Hypometabolism – FDG-PET	Temporo-parietal hypometabolism	Temporo-parietal hypometabolism
Amyloid imaging – PIB-PET	Precuneus/posterior cingulate and prefrontal; consistent striatal binding	Precuneus/posterior cingulate and prefrontal; less consistent striatal binding
Pathology	Plaques and tangles in all; CAA in most; cottonwool plaques in some	Plaques and tangles in all; CAA in most
CSF A β 42	Decreased	Decreased
CSF tau, p-tau181	Increased	Increased
Blood A β 42/A β 40 ratio	Increased	Variable

A β , amyloid-beta; ADAD, autosomal-dominant Alzheimer's disease; CAA, cerebral amyloid angiopathy; CSF, cerebrospinal fluid; FDG, fluorodeoxyglucose; MRI, magnetic resonance imaging; PET, positron emission tomography; PIB, Pittsburgh Compound B; SAD, sporadic Alzheimer's disease.

been individually described by groups around the world, each following a relatively small number of affected families. While the pathogenic cause of ADAD is an inherited mutation, the molecular pathogenic causes of SAD have not yet been identified. Therefore, although the two forms of the disease may have fundamentally different initial pathways, they share a remarkably similar pathophysiology. These descriptions have provided key insights into the causes of both SAD and ADAD. The characteristics of ADAD compared with the more common sporadic late-onset AD are summarized in Table 1.

Clinical presentation of ADAD

In broad terms, the clinical presentation of ADAD is very similar to that of SAD. Like SAD, most ADAD cases present with an insidious onset of episodic memory difficulties followed by inexorable progression of cortical cognitive deficits. The most obvious difference between familial and sporadic cases of AD is the younger age at onset in individuals with ADAD mutations. The youngest ages at onset are with *PSEN1* mutations; symptoms typically first appear between the ages of 30 and 50 years, but some families have individuals affected in their 20s [17]. *APP* pedigrees tend to have a later age at onset, typically in the 50s and ranging from 45 to 60 years old. The rarer *PSEN2* mutations have a wide range of onset with some relatively late-onset cases. Overall survival in ADAD is similar to that of SAD, with the caveat that survival length in very elderly sporadic individuals tends to be lower. If younger onset (<65 years old), and

therefore healthier, sporadic cases are compared with ADAD individuals, their survival is not very different. *PSEN1* mutation carriers may have slightly shorter survival. Comparisons of disease duration are notoriously difficult, particularly as recognition of the onset of problems may be earlier in familial individuals who are aware of their at-risk status – particularly those enrolled in longitudinal studies.

The majority of ADAD cases have an amnesic presentation very similar to that seen in sporadic disease, with the first deficits being in visual and verbal recall and recognition. Longitudinal studies of unaffected at-risk individuals have suggested that the earliest neuropsychometric findings involve a fall in verbal memory and performance IQ scores [18], with relatively preserved naming [19]. Atypical language and behavioral presentations occur in a minority of both sporadic and familial cases.

Neurological signs and symptoms appear to be more common in ADAD. Myoclonus and seizures are both relatively more frequent; myoclonus may be a harbinger of later seizures. A number of *PSEN1* mutations are variably associated with a spastic paraparesis (and characteristic histopathology) and extrapyramidal and cerebellar signs.

APP mutations that cluster within the A β coding domain around positions 692 to 694 do tend to have a phenotype that is different to sporadic disease – cerebral hemorrhage is a characteristic feature probably related to extensive amyloid angiopathy. Amyloid angiopathy and seizures are also a feature of the *APP* duplication pedigrees [20].

Apart from some mutation-specific exceptions and the earlier age at onset, ADAD is remarkably similar to SAD, with as yet unexplained heterogeneity being a feature of both forms of the disease.

Neuropathology

The principal neuropathological changes in ADAD – neuronal loss, neurofibrillary tangles, senile plaques, and cerebral amyloid angiopathy (CAA) – mirror those seen in SAD, providing strong support for ADAD as a model for studying AD (Figure 1). *In vitro* and *in vivo* studies have shown that dominant mutations frequently increase A β 42 and A β 40 deposition and alter the A β 42/A β 40 ratio [21]. Postmortem studies confirmed elevated levels of brain A β 42 in persons with *APP* mutations compared with SAD [22]. *APP* mutations increase A β production by different mechanisms. Mutations adjacent to the β -secretase cleavage site increase cleavage by β -secretase, generating increased A β 40 and A β 42 from *APP* [23]. *APP* mutations around the γ -secretase cleavage sites result in modification of γ -secretase activity, enhancing only the production of A β 42 [24]. *PSEN1* and *PSEN2* mutations alter the conformation of the γ -secretase complex, increasing production of A β 42 from *APP* [21]. Postmortem studies have shown that *PSEN1* and *PSEN2* mutations are related to increased levels of insoluble A β 42, and to a lesser extent insoluble A β 40, compared with SAD [25-28]. A comparable A β 42/A β 40 ratio between SAD and *PSEN* mutations has also been reported [29,30], although other research has reported a significantly increased A β 42/A β 40 ratio in *PSEN1* and *PSEN2* mutations when compared with SAD, primarily due to higher levels of A β 42 [31].

Distinctive neuropathological features are found in some pathology case reports and may be related to mutation type. These variant pathologies may affect the pharmacological response, tolerability, and biomarker measurements of experimental agents in clinical trials into SAD. These include cottonwool plaques, severe CAA, intracerebral hemorrhage, cerebellar plaques, and Lewy bodies. Cottonwool plaques are large, ball-like plaques lacking dense amyloid cores that have been reported with *PSEN1* mutations, especially in mutations beyond codon 200 [32]. Cottonwool plaques have been associated with spastic paraparesis and seizures [29]. CAA is common in SAD, but may be more prominent with specific ADAD mutations. The Dutch, Flemish, and British *APP* mutations occurring within the A β coding region typically feature severe CAA, with intracerebral hemorrhage occurring in persons with the Dutch mutation. Larger and denser A β deposits around vessels or ring-like plaques staining for A β 42 instead of A β 40 have been reported with some *APP* mutations compared with SAD [33,34]. *PSEN1* mutations after codon 200 show a higher incidence of severe CAA compared with

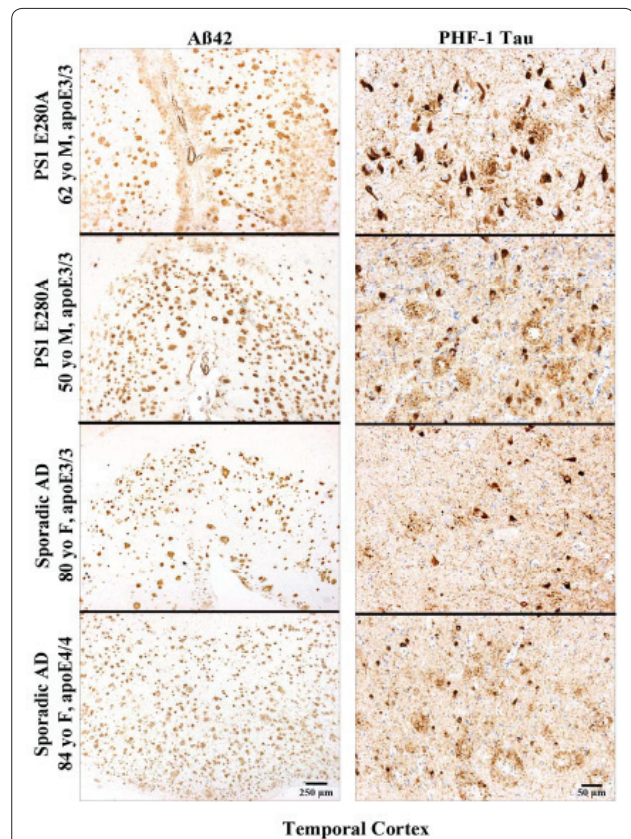


Figure 1. Principal neuropathological changes in autosomal-dominant Alzheimer's disease. Sections showing amyloid-beta (A β)42 and PHF-1 tau detection (top to bottom): presenilin 1 (PS1) E280A (male, 62 years old, disease duration 8 years, apolipoprotein E3/3); PS1 E280A (male, 50 years old, disease duration 5 years, apolipoprotein E3/3); sporadic Alzheimer's disease (SAD) (female, 80 years old, disease duration 7 years, apolipoprotein E3/3); SAD (female, 84 years old, disease duration 13 years, apolipoprotein E4/4). All brain tissues were routinely fixed in formalin and were paraffin-embedded. Sections were 12 μ m thick. A β 42 was detected using polyclonal antibody C42 (with formic acid pretreatment), kindly provided by Dr Takaomi Saido (RIKEN Brain Science Institute, Tokyo, Japan). PHF-1 tau was detected using PHF-1 monoclonal antibody (with microwave pretreatment), kindly provided by Dr Peter Davies (Feinstein Institute of Medical Research, New York, USA).

SAD [29]. Cerebellar plaques with the British *APP* and some *PSEN1* mutations have been reported [22]. Lewy body pathology has been reported in the amygdala and neocortex with some *PSEN1* and *PSEN2* mutations [35], as has been reported in SAD. Variability in phenotypic and pathological expression has been reported within families, suggesting that genetic or epigenetic factors might be exerting disease-modifying effects [31].

Neuroimaging

A growing number of neuroimaging studies have demonstrated evidence of early alterations in brain structure

and function in carriers of autosomal-dominant mutations prior to the onset of clinical dementia. Early magnetic resonance imaging (MRI) studies demonstrated that hippocampal atrophy was present in presymptomatic and early symptomatic carriers, which paralleled the development of verbal or visual memory deficits, in a pattern similar to that seen in SAD [36]. More severe medial-temporal lobe atrophy may be present in symptomatic ADAD carriers compared with SAD [37]. Gray-matter regional volume loss and decreases in magnetization transfer ratio have also been reported in mildly symptomatic carriers [38]. Longitudinal structural imaging studies have demonstrated an accelerated course of atrophy compared with SAD, in both regional-medial temporal lobe and whole-brain measures [39-41] and in cortical thinning, particularly evident in the precuneus and posterior cingulate prior to the diagnosis of dementia [42]. Alterations in white matter structure have also been demonstrated in presymptomatic and early symptomatic carriers, with decreased fractional anisotropy in the fornix and widespread areas of brain visualized with diffusion tensor imaging [43].

Presymptomatic alterations in brain perfusion and metabolism, similar to the patterns reported in SAD, have also been reported among ADAD carriers using nuclear medicine techniques, including single photon emission tomography [44,45] and positron emission tomography (PET) [46,47]. One study demonstrated early glucose fluorodeoxyglucose-PET hypometabolism in the posterior cingulate cortices, hippocampus and entorhinal cortices of presymptomatic carriers of ADAD mutations, which was present prior to significant atrophy in these regions [48]. Functional MRI techniques have demonstrated alterations in hippocampal activity during episodic memory tasks in presymptomatic ADAD carriers that appear to occur decades prior to dementia [49], similar to the observations in young apolipoprotein E $\epsilon 4$ carriers [50,51], however, this observation was not replicated in a larger population of ADAD mutation carriers in a study employing an implicit novelty encoding paradigm [52].

More recently, PET amyloid imaging studies with Pittsburgh Compound B (PiB) have revealed evidence of fibrillar A β deposition in ADAD, including carriers who were up to 10 years younger than the age of onset for their family [53-55]. Interestingly, these studies have consistently reported elevated levels of PiB retention in the striatum of presymptomatic ADAD individuals, which occurs more variably in late-onset SAD.

Biomarkers

The biochemical changes in the brain, cerebrospinal fluid (CSF) and blood of persons with AD have been described in detail over the past 30 years. Many biochemical

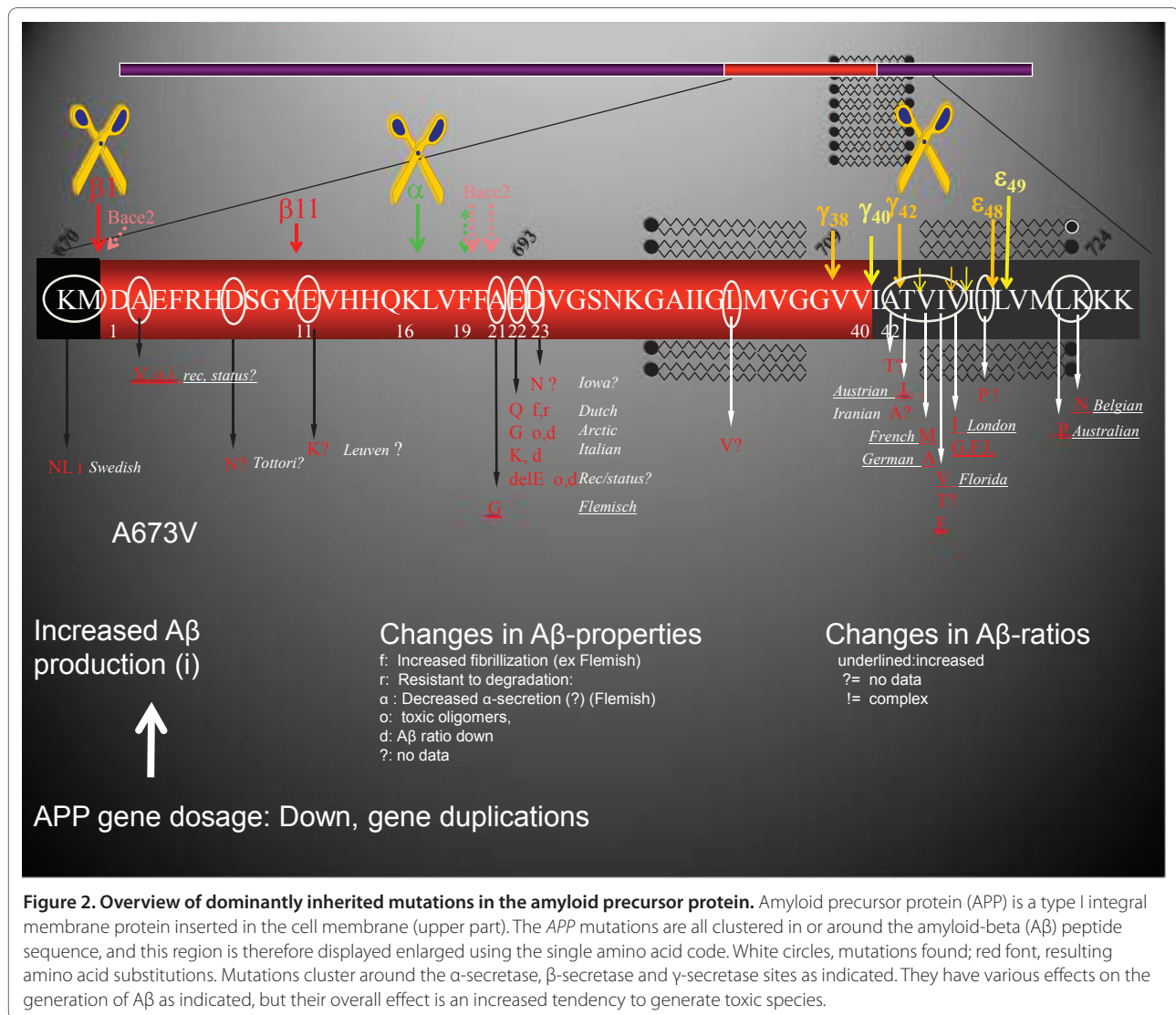
changes in the brain have been documented to occur in the AD process, with those biomarkers associated with amyloid plaques and neurofibrillary tangles being specific for pathologically defined AD [6,56]. The identification of A β as the major component of CAA [57] and amyloid deposits in plaques [58] was followed by the finding that tau is the major component of neurofibrillary tangles. In addition to AD-specific protein deposition, biochemical changes in synaptic, inflammatory, oxidative, and cell cycle markers occur in the AD brain [59].

Multiple groups have reported that CSF A β 42 in ADAD participants is reduced to approximately one-half of normal values [60,61], a finding remarkably similar to SAD [62,63]. While decreased A β 42 appears to have remarkable specificity for pathologic AD and A β amyloidosis in the brain [64], CSF A β 40 is not consistently different in AD individuals compared with normal individuals. CSF tau and phospho-tau levels are increased almost two-fold in ADAD individuals compared with controls [60,61], again mimicking the CSF profile in later-onset SAD. The relative age at which CSF biomarker changes occur in ADAD has not yet been adequately characterized, although it appears to predate clinical symptoms.

Increases in plasma A β 42 have been consistently found in ADAD, while there is little, if any, consistently reported difference in SAD [65-67]. Other blood-based biomarkers have not yet reproducibly differentiated ADAD or SAD from controls.

Mutations

Identification of mutations in the substrate *APP* as well as in the proteases *PSEN1* and *PSEN2* that cleave *APP* to produce A β peptides provides very strong support for the amyloid hypothesis in AD [68]. The mutations in the *APP* gene are clustered around the three cleavage sites (Figure 2). Only one mutation (the Swedish mutation) increases A β generation by increasing β -secretase processing of *APP*. Most of the other mutations affect the biophysical properties of the A β peptide and have a diverse array of effects, but, as indicated in Figure 2, they consistently increase the toxic amyloid potential of the protein, thereby increasing the tendency of A β to oligomerize. This is particularly clear for the most abundant mutations affecting the γ -secretase cleavage sites, which all result in the generation of the longer A β 42 peptide. The rationale for therapeutic strategies that target decreasing the A β generated from the *APP* protein in these families is obviously strong, and β -secretase or γ -secretase inhibitors are predicted to work as they act on the enzymes and not on the *APP* substrate [69]. For immunization strategies, *APP* mutations in the A β sequence may or may not interfere with the binding of particular antibodies.

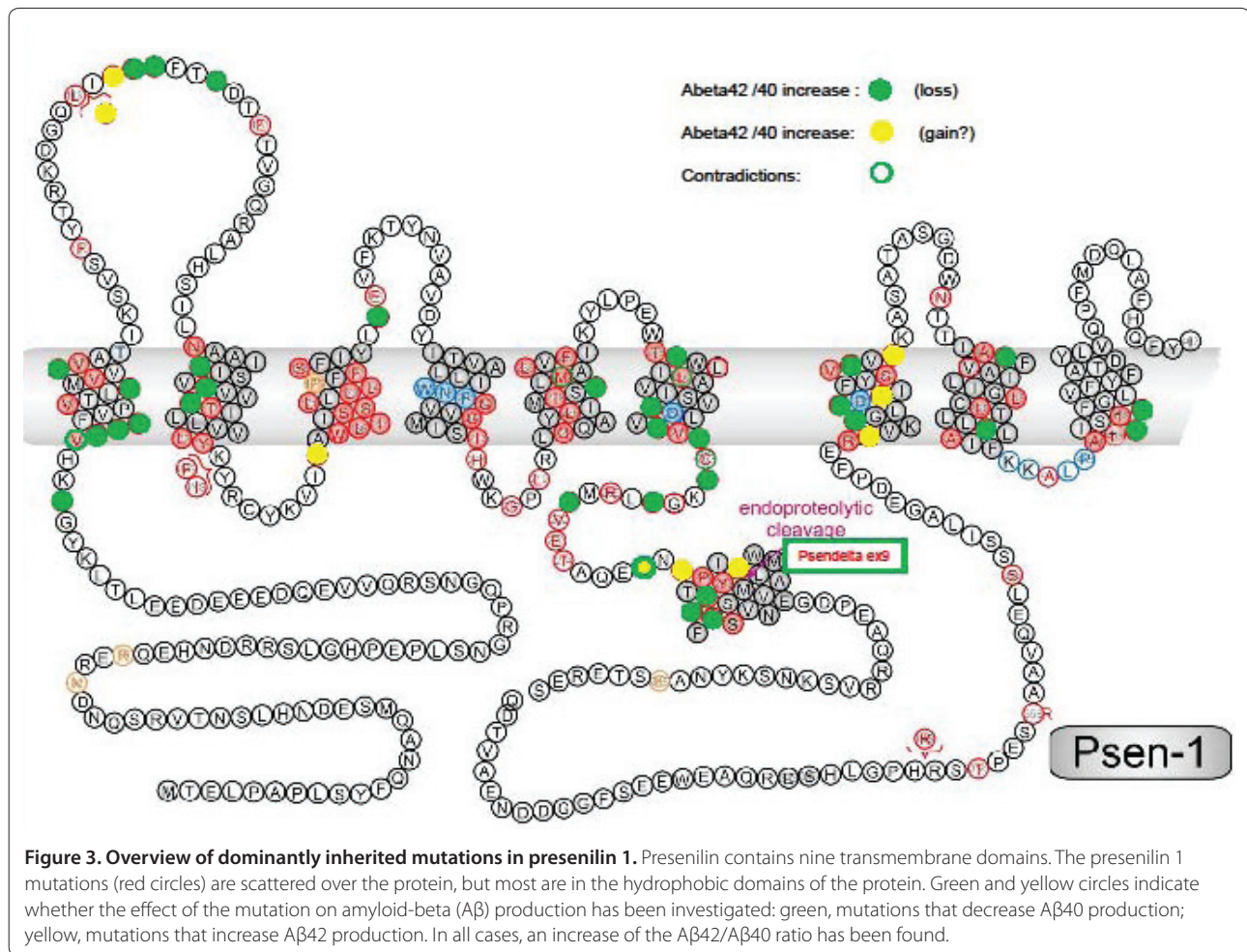


In contrast to the localized APP mutations, the presenilin mutations are scattered throughout the presenilin protein, although most are clustered along the different transmembrane domains in the hydrophobic core of the protein (Figure 3). Functionally, most presenilin mutations cause a loss of function of γ-secretase activity; that is, they reduce the cleavage rate of the different substrates of the enzyme [70]. Pathologically, they most probably operate in a similar way as the APP mutations by enhancing the toxic amyloid potential of the residual Aβ peptides that are generated by the mutated presenilin/γ-secretase. Indeed, although many mutations lower Aβ40 production, almost all mutations increase or at least do not affect the production of the Aβ42 peptide [71]. The overall result is a change in the Aβ42:Aβ40 ratio, which increases the tendency to form toxic oligomeric species [72].

γ-Secretase inhibitors may have less effect on mutated γ-secretase than on wild-type γ-secretase [73-75]. In preparation for treatment trials, individual mutations can be tested *in vitro* for γ-secretase inhibitor effects on γ-secretase activity. While it is likely that lowering the total burden of Aβ peptide might be beneficial, caution is needed because it is possible that some γ-secretase inhibitors could block mainly the wild-type γ-secretase while the mutant presenilin remains operational. β-Secretase inhibitors or vaccination against Aβ avoid this particular issue as they target the wild-type β-secretase or the wild-type Aβ.

Mouse models

The creation of AD animal models was crucial to the development of modern anti-amyloid therapeutic



programs. Initial efforts to develop an AD model focused on transgenic mice overexpressing human *APP*, since no naturally occurring animal models fully recapitulate all of the pathological and functional deficits in AD. Overexpression of the wild-type *APP* was insufficient to cause a relevant phenotype. With the discovery of the familial *APP* mutations, however, several animal models using the Swedish, London, Indiana and other mutations have been developed and characterized. Most of these mouse models show consistent amyloid pathology, but often there is poor correlation between the development of morphological brain changes of deposition of amyloid plaques and disturbances in learning and memory function.

Mouse models with only presenilin 1 or presenilin 2 mutations have been developed, but they do not develop amyloid pathology in spite of increased production of $A\beta_{42}$ [76,77]. The inability of presenilin mutations to cause amyloid pathology in mice is most probably due to the sequence differences of mouse *APP* compared with human *APP*, as murine $A\beta$ peptides are less prone to aggregation. Accelerated brain pathology was achieved

by combining the genetic liability of human *APP* mutations with presenilin mutations [78]. In addition, the behavioral disturbances are more pronounced in these bigenic animals [79].

Transgenic models of ADAD are quite different from human models because of species differences and the location and increased amount of expression of the mutated protein. Transgenic models can be useful for drug development, however, because they develop amyloidosis and express altered $A\beta$ peptides similar to human carriers of the mutation. Therapies that show pathological efficacy should therefore also be able to exhibit similar activity in humans; for example, decreasing overall amyloid peptides and normalizing the $A\beta_{42}:A\beta_{40}$ ratio. Because most of the treatments currently in clinical trials have been developed in mice carrying an ADAD mutation, they are likely to be more effective in ADAD compared with SAD. Finally, although all of the mouse models demonstrate disturbances of amyloid production and metabolism, they are not full models of AD. Conclusions about the therapeutic efficacy

of drugs tested in mouse models must therefore be made cautiously.

Current treatment trials

Current trials for the common form of AD include approaches to target A β by decreasing production [80,81], increasing clearance [82-84], and other attempts to ameliorate the toxic effects of the amyloid cascade. Alternative targets at various stages of drug development include tau, inflammation, neurotransmitter modulators, and other approaches. The diverse approach to drug discovery in AD is helpful for the field, as there has not yet been a successful disease modification trial. Reasons cited for the lack of clinical trial success over the past decade include inadequate preclinical models, few trials completing phase III studies, few studies with demonstrated pharmacodynamic activity, treating the disease process too late in the disease course, or targeting an insignificant mechanism. Treatment trials in ADAD provide an opportunity to address several of these concerns of treating too little, too late – with designs that demonstrate target engagement followed by prevention studies to alter the course of changes that occur in the disease process.

Despite the opportunity for prevention studies in persons destined to develop AD because of ADAD mutations, we are aware of only one such study being performed [85]. Six presymptomatic known *PSEN1* mutation carriers are being treated in an open-label fashion with HMG-CoA reductase inhibitors (either atorvastatin or simvastatin). In addition to cognitive outcome measures, CSF indices (A β 42, tau, p-tau181, sAPP α , and sAPP β) are being obtained. In a preliminary report, a lowering of CSF sAPP α and sAPP β associated with HMG-CoA reductase inhibitors was observed in *PSEN1* mutation carriers without an effect on A β 42, tau, or p-tau181. Although small in scale, this biomarker study represents an important initial step towards larger efforts to explore preventative interventions in ADAD.

The Dominantly Inherited Alzheimer's Network

Owing to the geographically dispersed nature of ADAD families and the relative rarity of the disease, an international network of research centers has been established by the National Institute on Aging to adequately power studies in this uniquely informative population. This network, formally known as the Dominantly Inherited Alzheimer's Network (DIAN), will enable international longitudinal studies of persons with dominantly inherited mutations that cause AD. This is the first large-scale, multicenter, systematic effort to use standardized instruments to identify and uniformly evaluate individuals with dominantly inherited AD. The DIAN aims to determine the chronological changes in cognition

and biomarkers in relation to clinical onset and progression of dementia in a well-characterized and uniformly studied group of persons at risk for ADAD. The DIAN investigators will assess and quantify the ability of clinical, biological and imaging markers to predict and track the progression of AD. The DIAN's overriding purpose is to contribute to the search for meaningful therapies for AD by helping elucidate the cascade of events that lead to dementia of the Alzheimer's type.

The specific aims for the DIAN include the following. First, to establish an international registry of individuals (mutation carriers and noncarriers; presymptomatic and symptomatic) who are biological adult children of a parent with a known causative mutation for AD in the *APP*, *PSEN1*, or *PSEN2* genes in which the individuals are evaluated in a uniform manner at entry and longitudinally thereafter. The second aim is to obtain clinical and cognitive batteries that comprise the Uniform Data Set of the National Institutes of Health-funded Alzheimer's Disease Centers, supplemented by web-based neuropsychological tests. A further aim is to implement structural, functional, and amyloid imaging protocols (3T MRI, fluorodeoxyglucose-PET, PiB-PET). The fourth aim is to collect biological fluids, including blood and CSF, for DNA analysis and assays of putative biomarkers of AD, including A β 42 and tau – this will also provide a resource for exploratory studies of novel biochemical markers. Finally, the DIAN aims to perform uniform histopathological examination of cerebral tissue in individuals who come to autopsy.

The National Institute on Aging awarded a 6-year grant for the DIAN that funds 10 international performance sites that combine resources and research participants of the individual sites in a uniform and comprehensive manner. Currently, over 400 individuals who are members of families with a known causative mutation for AD (that is, *APP*, *PSEN1*, *PSEN2*) have been identified between the sites and are eligible for participation in the DIAN. Over the first 6 years, sites will recruit, enroll and evaluate these individuals to reach a sample size of 400 participants. The DIAN cohort is predicted to comprise 80% asymptomatic individuals (with 50% of these being mutation carriers and 50% noncarriers) and 20% symptomatic individuals. Based on the participant population demographics, the DIAN is expected to enroll 50% of individuals within 3 years of parental age at disease onset, and 30% of individuals within 3 to 10 years before parental age at disease onset. The DIAN participants will thus consist of approximately 160 asymptomatic mutation carriers, 80 symptomatic AD mutation carriers, and 160 mutation-negative sibling controls.

Data obtained through the DIAN will be used in the design and statistical powering of prevention and treatment studies in ADAD. Additionally, white blood cells

are being stored at the National Cell Repository for Alzheimer's Disease to establish immortalized lymphoblastoid cell lines for use in a variety of investigations, including *in vitro* studies to characterize the pharmacodynamic properties of putative anti-AD agents and their applicability in both ADAD and SAD. The DIAN will also provide the infrastructure for the recruitment and retention of subjects, which is critical for the successful performance of clinical trials in this rare, widely dispersed, and informative population.

Design of the DIAN clinical trials

An additional scientific aim for the DIAN is to evaluate potential disease-modifying compounds for the treatment of AD. To this end, the DIAN formed a Clinical Trials Committee to direct the design and management of interventional therapeutic trials of DIAN participants. The committee will assist in the design and implementation of trials that have the highest likelihood of success while providing advancement of treatments, scientific understanding and clinical effects of proposed therapies. Specifically, the committee's aims are to evaluate trial designs to determine the impact of interventions on biomarker, cognitive, and clinical measures in ADAD, to determine which therapeutic targets are most amenable to treatment at different stages of AD, and to test the hypotheses for the causes of AD (for example, amyloid hypothesis) through therapeutic treatment trials.

Testing interventions for the prevention of AD in presymptomatic persons with inherited ADAD mutations offers potential for medical and scientific advances, but also presents a number of challenges – ethically, scientifically, and logistically. ADAD participants tend to be highly motivated for research, perhaps due in large part to altruism. That is, they frequently express the hope that even if their participation does not benefit themselves, perhaps it will benefit their family members, including their progeny. One key design challenge is the fact that most individuals at risk of carrying an ADAD mutation have not chosen to have genetic testing. In a clinical series of 251 persons at risk for ADAD or frontotemporal lobar degeneration due to mutations in the *MAPT* gene, only 8.4% requested such testing [86].

The DIAN investigators aim to explore disease-modifying treatments in ADAD mutation carriers. The ultimate goal is to postpone or prevent the onset of AD symptoms, or to slow the progression of symptoms. The limited number of potential participants, however, limits the feasibility of trials with traditional cognitive or clinical outcomes. The DIAN will pursue a strategy of assessing the impact of putative disease-modifying treatments on biomarkers of AD in combination with sensitive measures of cognition. Candidate biomarkers include molecular imaging (amyloid PET scanning), functional imaging

(fluorodeoxyglucose-PET) and structural imaging (volumetric MRI measures), as well as biochemical measures in CSF (for example, tau, phospho-tau and A β 42). Although no biomarker has been validated as a surrogate outcome for regulatory purposes, these biomarkers represent plausible candidate surrogate outcomes being pursued by AD trialists. The rationale for accepting surrogate markers with cognitive improvements as viable endpoints is compelling in this genetically determined population.

As the number of preventative studies that might be performed in persons carrying familial AD mutations will be limited, the optimum choice of intervention is critical. Medications that prevent neurodegeneration by targeting the causative mechanisms are ideal as they might both prevent the development of pathology and slow progression after onset. Active or passive immunotherapy or γ -secretase or β -secretase inhibitors may fulfill these criteria. Potential hazards include complications related to established amyloid angiopathy (for example, vasogenic edema), which may be increased in some ADAD mutations, teratogenicity, and other unknown risks of chronic exposure.

Statistical design and analyses

As only a minority of presymptomatic persons at risk for ADAD mutations asks to know their genetic status, enrollment of mutation carriers into prevention studies presents a challenge. The availability of treatment trials will undoubtedly influence the decision to obtain genetic testing. If genetic testing is required for a treatment trial, participants will need to consider testing for mutation status in order to participate in a study in which they may receive a medication (or placebo) that may help prevent the illness but could also have significant side effects. An alternative approach would be to open enrollment to all persons at risk, to not report genetic testing, and to only randomize active drug to mutation carriers with noncarriers receiving blinded placebo. In such a study, the occurrence of side effects might unblind participants to their treatment group and therefore to their mutation status. Informed consent for such a trial would need the equivalent of presymptomatic genetic counseling for this possibility.

The gold standard for demonstrating efficacy of an intervention is the prospective randomized, blinded, placebo-controlled study. Additionally, studies might be designed that feature open-label extensions after a prespecified time period and/or a clinical endpoint is reached (such as diagnosis of dementia).

Well-established AD biomarkers, including CSE, PiB, and MRI markers, can be used as endpoints in clinical trials on DIAN presymptomatic mutation carriers. The objective of such trials is to determine the efficacy of

novel treatments in altering the rate of change among these biomarkers. In addition, cognitive and global function measures (for example, Clinical Dementia Rating sum of boxes) can be used in clinical trials on DIAN symptomatic participants. Given the potential heterogeneity of the population, baseline co-variants may be critical to maximize efficiency. In a prevention trial of presymptomatic ADAD participants, sensitive cognitive measures may be used in combination with biomarker changes. Alternatively, the time to the onset of mild cognitive impairment or AD can be reasonably used as an efficacy endpoint, especially if participants are chosen with appropriate estimates of their age of onset so that enough participants will develop AD during the designed length of follow-up to satisfy the statistical power requirement. The high-risk period immediately before clinical and cognitive decline can be determined by the use of biomarkers together with family history and age.

The ongoing DIAN longitudinal study provides important baseline and rate of change data for clinical, cognitive, imaging and other biomarkers. These data will increase the ability to power and design clinical trials, and will also provide a pretreatment rate of change for analysis of treatment effects. In general, an increase of either the study duration or the frequency and precision of repeated measures will decrease the within-subject variability and will improve the precision of parameter estimates or statistical power over time [87]. In prevention trials in presymptomatic DIAN participants, the duration of the trial as well as the age window of participants relative to their parents' age of disease onset is crucial to allow for adequate biomarker and cognitive change to be detected.

Plans for initial DIAN therapeutic trials include identifying optimal anti-amyloid candidate interventions in development. If indicated, the suitability of specific candidate agents may be first assessed with short-duration cerebrospinal fluid biomarker studies to confirm target engagement. The study population may include all participants at risk, or a subset with more imminent risk as suggested by biomarkers or expected age of onset; both symptomatic and presymptomatic individuals may be included. Study designs that may be implemented include randomized controlled trials with parallel group designs, lasting approximately 2 years. After completion of the placebo-controlled period, all participants can be offered open-label treatment with continued regular assessments. The primary outcome measure may be a change in amyloid PET signal; this measure provides adequate power to demonstrate a treatment effect with group sizes of only 20 to 30 participants [82], and allows a clinically heterogeneous study population. Secondary outcomes would include other imaging and biochemical biomarkers, as well as cognitive and clinical assessments.

Conclusion

A historical precedent highlights what is possible in the approach to prevent end organ damage by early intervention. Although there are challenges in designing and implementing presymptomatic treatment trials for an early-onset genetic disease, we are encouraged by similar successful trials in vascular disease. The first clinical improvement in statin treatment for hypercholesterolemia was demonstrated in familial hypercholesterolemia, a genetic, early-onset aggressive form of the more common later-onset hypercholesterolemia that ultimately leads to myocardial infarction and stroke [88]. After 4 to 8 weeks of treatment with mevastatin, patients with familial hypercholesterolemia demonstrated resolving vascular bruits and disappearance of tendonous xanthomas [89]. Further, treatment with mevastatin decreased cholesterol levels in familial hypercholesterolemia patients as well as in nonfamilial hyperlipidemic patients. Taken together, these observations provided the first biological evidence of a direct effect of a statin on cholesterol metabolism and clinical findings. These early biomarker studies heralded the future success of a class of anti-cholesterol drugs called statins in reducing heart attacks and strokes for millions of patients worldwide. So too may studies of anti-amyloid treatments in ADAD also lead to breakthroughs that allow for highly effective therapies against SAD.

Therapeutic trials in ADAD are highly likely to produce critical scientific information, test fundamental theories, bridge basic science with clinical trials, accelerate therapeutic development for SAD and, perhaps most importantly, offer a chance for ADAD mutation carriers to improve their lives and their children's lives.

Abbreviations

A β , amyloid-beta; AD, Alzheimer's disease; ADAD, autosomal-dominant Alzheimer's disease; APP, amyloid precursor protein; CAA, cerebral amyloid angiopathy; CSF, cerebrospinal fluid; DIAN, Dominantly Inherited Alzheimer's Network; MRI, magnetic resonance imaging; PET, positron emission tomography; PiB, Pittsburgh Compound B; *PSEN1*, presenilin 1; *PSEN2*, presenilin 2; SAD, sporadic Alzheimer's disease.

Competing interests

BDS is a consultant for Janssen Pharmaceutica, Beerse, Envivo Pharmaceuticals, Boston and Remynd NV, Leuven. He also receives research funding from Janssen Pharmaceutica, Beerse. RAS has consulted for Janssen, Pfizer, Elan, Bayer, Bristol-Myers-Squibb. The authors declare no other competing interests.

Acknowledgements

The authors are grateful to the participants for their time and effort in contributing to the body of knowledge reviewed. The present work was supported by grants from the US National Institutes of Health grants U-01 AG032438 and also grants from an anonymous foundation. NCF is supported by the UK National Institute for Health Research and Medical Research Council. BDS is supported by a Methusalem grant from the Flanders government and the KULeuven. The authors thank Karen Dodson for her insightful editing of the manuscript.

Author details

¹Department of Neurology, Washington University School of Medicine, 660 S. Euclid, Campus Box 8111, St Louis, MO 63110, USA. ²Department of

Neurosciences, University of California San Diego, Gilman Drive, La Jolla, CA 92093, USA. ³Department for Molecular and Developmental Genetics, Flanders Institute for Biotechnology (VIB), Leuven, Belgium. ⁴Center for Human Genetics, K.U.Leuven, Herestraat 49, 3000 Leuven, Belgium. ⁵Dementia Research Centre, UCL Institute of Neurology, University College London, London WC1N 3BG, UK. ⁶Center for Neurologic Diseases, Brigham and Women's Hospital, Harvard Medical School, Boston, MA 02115, USA. ⁷Mary S. Easton Center for Alzheimer's Disease Research, Department of Neurology, David Geffen School of Medicine at UCLA, Los Angeles, CA 90095, USA. ⁸Department of Neurology, Memory and Aging Program, Butler Hospital, 345 Blackstone Boulevard, Providence, Rhode Island 02906-4800, USA. ⁹Department of Clinical Neurosciences and Psychiatry, Brown Medical School, USA. ¹⁰Center for Alzheimer Research and Treatment, Brigham and Women's Hospital, Alzheimer's Disease Research Center, Massachusetts General Hospital, Harvard Medical School, Boston, MA 02115, USA. ¹¹JSW LifeSciences GmbH, Parkring 12, A-8074 Grambach, Austria. ¹²Division of Biostatistics, Washington University, St Louis, MO 63110, USA.

Published: 6 January 2011

References

1. Ferri CP, Prince M, Brayne C, Brodaty H, Fratiglioni L, Ganguli M, Hall K, Hasegawa K, Hendrie H, Huang Y, Jorm A, Mathers C, Menezes PR, Rimmer E, Sczufca M: **Global prevalence of dementia: a Delphi consensus study.** *Lancet* 2005, **366**:2112-2117.
2. Yu CE, Marchani E, Nikisch G, Muller U, Nolte D, Hertel A, Wijsman EM, Bird TD: **The N141I mutation in PSEN2: implications for the quintessential case of Alzheimer disease.** *Arch Neurol* 2010, **67**:631-633.
3. Lowenberg K, Waggoner RW: **Familial organic psychosis (Alzheimer's type).** *Arch Neurol Psychiatr* 1934, **31**:737-754.
4. Flugel FE: **Zur Diagnostik der Alzheimerschen Krankheit.** *Zentralbl Gesamte Neurol Psychiatr* 1929, **120**:783-787.
5. Lauter H: **Genealogical findings in a family with Alzheimer's disease.** *Arch Psychiatr Nervenkr Z Gesamte Neurol Psychiatr* 1961, **202**:126-139.
6. Lleo A, Berezovska O, Growdon JH, Hyman BT: **Clinical, pathological, and biochemical spectrum of Alzheimer disease associated with PS-1 mutations.** *Am J Geriatr Psychiatry* 2004, **12**:146-156.
7. Feldman RG, Chandler KA, Levy LL, Glaser GH: **Familial Alzheimer's disease.** *Neurology* 1963, **13**:811-824.
8. St George-Hyslop PH, Tanzi RE, Polinsky RJ, Haines JL, Nee L, Watkins PC, Myers RH, Feldman RG, Pollen D, Drachman D, et al.: **The genetic defect causing familial Alzheimer's disease maps on chromosome 21.** *Science* 1987, **235**:885-890.
9. Goate A, Chartier-Harlin MC, Mullan M, Brown J, Crawford F, Fidani L, Giuffra L, Haynes A, Irving N, James L, Mant R, Newton P, Rooke K, Roques P, Talbot C, Pericak-Vance M, Roses A, Williamson R, Rossor M, Owen M, Hardy J: **Segregation of a missense mutation in the amyloid precursor protein gene with familial Alzheimer's disease.** *Nature* 1991, **349**:704-706.
10. Bertram L, Tanzi RE: **The current status of Alzheimer's disease genetics: what do we tell the patients?** *Pharmacol Res* 2004, **50**:385-396.
11. Mullan M, Houlden H, Windelspecht M, Fidani L, Lombardi C, Diaz P, Rossor M, Crook R, Hardy J, Duff K, Crawford F: **A locus for familial early-onset Alzheimer's disease on the long arm of chromosome 14, proximal to the alpha 1-antichymotrypsin gene.** *Nat Genet* 1992, **2**:340-342.
12. Schellenberg GD, Bird TD, Wijsman EM, Orr HT, Anderson L, Nemens E, White JA, Bonnycastle L, Weber JL, Alonso ME, Huntington P, Heston LL, Martin GM: **Genetic linkage evidence for a familial Alzheimer's disease locus on chromosome 14.** *Science* 1992, **258**:668-671.
13. St George-Hyslop P, Haines J, Rogaev E, Mortilla M, Vaula G, Pericak-Vance M, Foncin JF, Montesi M, Bruni A, Sorbi S, Rainero I, Pinessi L, Pollen D, Polinsky R, Nee L, Kennedy J, Macciardi F, Rogaeva E, Liang Y, Alexandrova N, Lukiw W, Schlumpf K, Tanzi R, Tsuda T, Farrer L, Cantu JM, Duara R, Amaducci L, Bergamini L, Gusella J, et al.: **Genetic evidence for a novel familial Alzheimer's disease locus on chromosome 14.** *Nat Genet* 1992, **2**:330-334.
14. Van Broeckhoven C, Backhovens H, Cruts M, De Winter G, Bruylant M, Cras P, Martin JJ: **Mapping of a gene predisposing to early-onset Alzheimer's disease to chromosome 14q24.3.** *Nat Genet* 1992, **2**:335-339.
15. Sherrington R, Rogaev EI, Liang Y, Rogaeva EA, Levesque G, Ikeda M, Chi H, Lin C, Li G, Holman K, Tsuda T, Mar L, Foncin JF, Bruni AC, Montesi MP, Sorbi S, Rainero I, Pinessi L, Nee L, Chumakov I, Pollen D, Brookes A, Sanseau P, Polinsky RJ, Wasco W, Da Silva HAR, Haines JL, Pericak-Vance MA, Tanzi RE, Roses AD, et al.: **Cloning of a gene bearing missense mutations in early-onset familial Alzheimer's disease.** *Nature* 1995, **375**:754-760.
16. Haass C, De Strooper B: **The presenilins in Alzheimer's disease – proteolysis holds the key.** *Science* 1999, **286**:916-919.
17. Snider BJ, Norton J, Coats MA, Chakraverty S, Hou CE, Jervis R, Lendon CL, Goate AM, McKeel DW, Jr, Morris JC: **Novel presenilin 1 mutation (S170F) causing Alzheimer disease with Lewy bodies in the third decade of life.** *Arch Neurol* 2005, **62**:1821-1830.
18. Fox NC, Warrington EK, Seiffer AL, Agnew SK, Rossor MN: **Presymptomatic cognitive deficits in individuals at risk of familial Alzheimer's disease. A longitudinal prospective study.** *Brain* 1998, **121**:1631-1639.
19. Godbolt AK, Cipolotti L, Watt H, Fox NC, Janssen JC, Rossor MN: **The natural history of Alzheimer disease: a longitudinal presymptomatic and symptomatic study of a familial cohort.** *Arch Neurol* 2004, **61**:1743-1748.
20. Rovelet-Lecrux A, Hannequin D, Raux G, Meur NL, Laquerriere A, Vital A, Dumanchin C, Feuillet S, Brice A, Vercelletto M, Dubas F, Frebourg T, Campion D: **APP locus duplication causes autosomal dominant early-onset Alzheimer disease with cerebral amyloid angiopathy.** *Nat Genet* 2006, **38**:24-26.
21. Borchelt DR, Thinakaran G, Eckman CB, Lee MK, Davenport F, Ratovitsky T, Prada CM, Kim G, Seekins S, Yager D, Slunt HH, Wang R, Seeger M, Levey AI, Gandy SE, Copeland NG, Jenkins NA, Price DL, Younkin SG, Sisodia SS: **Familial Alzheimer's disease-linked presenilin 1 variants elevate A β 1-42/1-40 ratio in vitro and in vivo.** *Neuron* 1996, **17**:1005-1013.
22. Mann DM, Iwatsubo T, Ihara Y, Cairns NJ, Lantos PL, Bogdanovic N, Lannfelt L, Winblad B, Maat-Schieman ML, Rossor MN: **Predominant deposition of amyloid-beta 42(43) in plaques in cases of Alzheimer's disease and hereditary cerebral hemorrhage associated with mutations in the amyloid precursor protein gene.** *Am J Pathol* 1996, **148**:1257-1266.
23. Citron M, Oltersdorf T, Haass C, McConlogue L, Hung AY, Seubert P, Vigo-Pelfrey C, Lieberburg I, Selkoe DJ: **Mutation of the beta-amyloid precursor protein in familial Alzheimer's disease increases beta-protein production.** *Nature* 1992, **360**:672-674.
24. Stenih C, Nilsberth C, Hammarback J, Engvall B, Naslund J, Lannfelt L: **The Arctic mutation interferes with processing of the amyloid precursor protein.** *Neuroreport* 2002, **13**:1857-1860.
25. Lemere CA, Lopera F, Kosik KS, Lendon CL, Ossa J, Saido TC, Yamaguchi H, Ruiz A, Martinez A, Madrigal L, Hincapie L, Arango JC, Anthony DC, Koo EH, Goate AM, Selkoe DJ: **The E280A presenilin 1 Alzheimer mutation produces increased A β 42 deposition and severe cerebellar pathology.** *Nat Med* 1996, **2**:1146-1150.
26. Mann DM, Iwatsubo T, Cairns NJ, Lantos PL, Nochlin D, Sumi SM, Bird TD, Poorkaj P, Hardy J, Hutton M, Prihar G, Crook R, Rossor MN, Haltia M: **Amyloid beta protein (A β) deposition in chromosome 14-linked Alzheimer's disease: predominance of A β 42(43).** *Ann Neurol* 1996, **40**:149-156.
27. Mann DM, Iwatsubo T, Nochlin D, Sumi SM, Levy-Lahad E, Bird TD: **Amyloid (A β) deposition in chromosome 1-linked Alzheimer's disease: the Volga German families.** *Ann Neurol* 1997, **41**:52-57.
28. Ishii K, Lipka C, Tomiyama T, Miyatake F, Ozawa K, Tamaoka A, Hasegawa T, Fraser PE, Shoji S, Nee LE, Pollen DA, St George-Hyslop PH, Li K, Ohtake T, Kalaria RN, Rossor MN, Lantos PL, Cairns NJ, Farrer LA, Mori H: **Distinguishable effects of presenilin-1 and APP717 mutations on amyloid plaque deposition.** *Neurobiol Aging* 2001, **22**:367-376.
29. Mann DM, Pickering-Brown SM, Takeuchi A, Iwatsubo T: **Amyloid angiopathy and variability in amyloid beta deposition is determined by mutation position in presenilin-1-linked Alzheimer's disease.** *Am J Pathol* 2001, **158**:2165-2175.
30. Ishii K, Li K, Hasegawa T, Shoji S, Doi A, Mori H: **Increased A β 42(43)-plaque deposition in early-onset familial Alzheimer's disease brains with the deletion of exon 9 and the missense point mutation (H163R) in the PS-1 gene.** *Neurosci Lett* 1997, **228**:17-20.
31. Gomez-Isla T, Growdon WB, McNamara MJ, Nochlin D, Bird TD, Arango JC, Lopera F, Kosik KS, Lantos PL, Cairns NJ, Hyman BT: **The impact of different presenilin 1 and presenilin 2 mutations on amyloid deposition, neurofibrillary changes and neuronal loss in the familial Alzheimer's disease brain: evidence for other phenotype-modifying factors.** *Brain* 1999, **122**(Pt 9):1709-1719.
32. Tabira T, Chui DH, Nakayama H, Kuroda S, Shibuya M: **Alzheimer's disease with spastic paresis and cotton wool type plaques.** *J Neurosci Res* 2002, **70**:367-372.
33. Kumar-Singh S, Cras P, Wang R, Kros JM, van Swieten J, Lubke U, Ceuterick C,

- Serneels S, Vennekens K, Timmermans JP, Van Marck E, Martin JJ, van Duijn CM, Van Broeckhoven C: **Dense-core senile plaques in the Flemish variant of Alzheimer's disease are vasocentric.** *Am J Pathol* 2002, **161**:507-520.
34. Basun H, Bogdanovic N, Ingelsson M, Almkvist O, Naslund J, Axelman K, Bird TD, Nochlin D, Schellenberg GD, Wahlund LO, Lannfelt L: **Clinical and neuropathological features of the arctic APP gene mutation causing early-onset Alzheimer disease.** *Arch Neurol* 2008, **65**:499-505.
35. Leverenz JB, Fishel MA, Peskind ER, Montine TJ, Nochlin D, Steinbart E, Raskind MA, Schellenberg GD, Bird TD, Tsuang D: **Lewy body pathology in familial Alzheimer disease: evidence for disease- and mutation-specific pathologic phenotype.** *Arch Neurol* 2006, **63**:370-376.
36. Fox NC, Warrington EK, Freeborough PA, Hartikainen P, Kennedy AM, Stevens JM, Rossor MN: **Presymptomatic hippocampal atrophy in Alzheimer's disease. A longitudinal MRI study.** *Brain* 1996, **119**:2001-2007.
37. Gregory GC MV, Schofield PR, Kril JJ, Halliday GM: **Differences in regional brain atrophy in genetic forms of Alzheimer's disease.** *Neurobiol Aging* 2006 **27**:387-393.
38. Ginestroni A BM, Della Nave R, Moretti M, Tessa C, Giannelli M, Caffarra P, Nacmias B, Bessi V, Sorbi S, Bracco L, De Stefano N, Mascalchi M: **Early structural changes in individuals at risk of familial Alzheimer's disease: a volumetry and magnetization transfer MR imaging study.** *J Neurol* 2009, **256**:925-932.
39. Chan D, Janssen JC, Whitwell JL, Watt HC, Jenkins R, Frost C, Rossor MN, Fox NC: **Change in rates of cerebral atrophy over time in early-onset Alzheimer's disease: longitudinal MRI study.** *Lancet* 2003, **362**:1121-1122.
40. Ridha B, Josephs KA: **Young-onset dementia: a practical approach to diagnosis.** *Neurologist* 2006, **12**:2-13.
41. Schott JM, Fox NC, Frost C, Scahill RI, Janssen JC, Chan D, Jenkins R, Rossor MN: **Assessing the extent of structural change in familial Alzheimer's disease.** *Ann Neurol* 2003, **53**:181-188.
42. Knight WD, Ahsan RL, Jackson J, Cipolotti L, Warrington EK, Fox NC, Rossor MN: **Pure progressive amnesia and the APPV717G mutation.** *Alzheimer Dis Assoc Disord* 2009, **23**:410-414.
43. Ringman JM ONJ, Geschwind D, Medina L, Apostolova LG, Rodriguez Y, Schaffer B, Varpetian A, Tseng B, Ortiz F, Fitten J, Cummings JL, Bartzokis G: **Diffusion tensor imaging in preclinical and presymptomatic carriers of familial Alzheimer's disease mutations.** *Brain* 2007, **130**:1767-1776.
44. Julin P AO, Basun H, Lannfelt L, Svensson L, Winblad B, Wahlund LO: **Brain volumes and regional cerebral blood flow in carriers of the Swedish Alzheimer amyloid protein mutation.** *Alzheimer Dis Assoc Disord* 1998, **12**:49-53.
45. Johnson KA, Lopera F, Jones K, Becker A, Sperling R, Hilson J, Londono J, Siegert I, Arcos M, Moreno S, Madrigal L, Ossa J, Pineda N, Ardila A, Roselli M, Albert MS, Kosik KS, Rios A: **Presenilin-1-associated abnormalities in regional cerebral perfusion.** *Neurology* 2001, **56**:1545-1551.
46. Kennedy AM, Rossor MN, Frackowiak RS: **Positron emission tomography in familial Alzheimer disease.** *Alzheimer Dis Assoc Disord* 1995, **9**:17-20.
47. Guze BH HJ, Mazziotta JC, Baxter LR, Jr, Phelps ME: **Positron emission tomography and familial Alzheimer's disease: a pilot study.** *J Am Geriatr Soc* 1992, **40**:120-123.
48. Mosconi L, Sorbi S, de Leon MJ, Li Y, Nacmias B, Myoung PS, Tsui W, Ginestroni A, Bessi V, Fayyazz M, Caffarra P, Pupi A: **Hypometabolism exceeds atrophy in presymptomatic early-onset familial Alzheimer's disease.** *J Nucl Med* 2006, **47**:1778-1786.
49. Mondadori CR BA, Mustovic H, Schmidt CF, Boesiger P, Nitsch RM, Hock C, Streffer J, Henke K: **Enhanced brain activity may precede the diagnosis of Alzheimer's disease by 30 years.** *Brain* 2006, **129**:2908-2922.
50. Filippini N, Zarei M, Beckmann CF, Galluzzi S, Borsci G, Testa C, Bonetti M, Beltramello A, Ghidoni R, Benussi L, Binetti G, Frisoni GB: **Regional atrophy of transcallosal prefrontal connections in cognitively normal APOE ε4 carriers.** *J Magn Reson Imaging* 2009, **29**:1021-1026.
51. Dennis NA BJ, Stokes J, Need A, Burke JR, Welsh-Bohmer KA, Cabeza R: **Temporal lobe functional activity and connectivity in young adult APOE ε4 carriers.** *Alzheimers Dement* 2009, **6**:303-311.
52. Ringman JM, Medina LD, Braskie M, Rodriguez-Agudelo Y, Geschwind DH, Macias-Islas MA, Cummings JL, Bookheimer S: **Effects of risk genes on BOLD activation in presymptomatic carriers of familial Alzheimer's disease mutations during a novelty encoding task.** *Cerebral Cortex* 2010 [Epub ahead of print].
53. Klunk WE, Price JC, Mathis CA, Tsopelas ND, Lopresti BJ, Ziolkowski SK, Bi W, Hoge JA, Cohen AD, Ikonovic MD, Saxton JA, Snitz BE, Pollen DA, Moonis M, Lippa CF, Swearer JM, Johnson KA, Rentz DM, Fischman AJ, Aizenstein HJ, DeKosky ST: **Amyloid deposition begins in the striatum of presenilin-1 mutation carriers from two unrelated pedigrees.** *J Neurosci* 2007, **27**:6174-6184.
54. Remes AM LL, Tuominen H, Aalto S, Kempainen N, Mononen H, Nägren K, Parkkola R, Rinne JO: **Carbon 11-labeled pittsburgh compound B positron emission tomographic amyloid imaging in patients with APP locus duplication.** *Arch Neurol* 2008, **65**:540-544.
55. Villemagne VL AS, Mizuno T, Brooks WS, Wada Y, Kondo M, Jones G, Watanabe Y, Mulligan R, Nakagawa M, Miki T, Shimada H, O'Keefe GJ, Masters CL, Mori H, Rowe CC: **High striatal amyloid beta-peptide deposition across different autosomal Alzheimer disease mutation types.** *Arch Neurol* 2009, **66**:1537-1544.
56. Verdile G, Gnjec A, Miklosy J, Fonte J, Veurink G, Bates K, Kakulas B, Mehta PD, Milward EA, Tan N, Lareu R, Lim D, Dharmarajan A, Martins RN: **Protein markers for Alzheimer disease in the frontal cortex and cerebellum.** *Neurology* 2004, **63**:1385-1392.
57. Glenner GG, Wong CW: **Alzheimer's disease: initial report of the purification and characterization of a novel cerebrovascular amyloid protein.** *Biochem Biophys Res Commun* 1984, **120**:885-890.
58. Masters CL, Simms G, Weinman NA, Multhaup G, McDonald BL, Beyreuther K: **Amyloid plaque core protein in Alzheimer disease and Down syndrome.** *Proc Natl Acad Sci U S A* 1985, **82**:4245-4249.
59. Frank RA, Galasko D, Hampel H, Hardy J, de Leon MJ, Mehta PD, Rogers J, Siemers E, Trojanowski JQ: **Biological markers for therapeutic trials in Alzheimer's disease. Proceedings of the biological markers working group: NIA initiative on neuroimaging in Alzheimer's disease.** *Neurobiol Aging* 2003, **24**:521-536.
60. Moonis M, Swearer JM, Dayaw MP, St George-Hyslop P, Rogava E, Kawarai T, Pollen DA: **Familial Alzheimer disease: decreases in CSF Aβ42 levels precede cognitive decline.** *Neurology* 2005, **65**:323-325.
61. Ringman JM, Younkin SG, Pratico D, Seltzer W, Cole GM, Geschwind DH, Rodriguez-Agudelo Y, Schaffer B, Fein J, Sokolow S, Rosario ER, Gyllys KH, Varpetian A, Medina LD, Cummings JL: **Biochemical markers in persons with preclinical familial Alzheimer disease.** *Neurology* 2008, **71**:85-92.
62. Fagan AM, Roe CM, Xiong C, Mintun MA, Morris JC, Holtzman DM: **Cerebrospinal fluid tau/beta-amyloid(42) ratio as a prediction of cognitive decline in nondemented older adults.** *Arch Neurol* 2007, **64**:343-349.
63. Shaw LM, Vanderstichele H, Knapik-Czajka M, Clark CM, Aisen PS, Petersen RC, Blennow K, Soares H, Simon A, Lewczuk P, Dean R, Siemers E, Potter W, Lee VM, Trojanowski JQ: **Cerebrospinal fluid biomarker signature in Alzheimer's disease neuroimaging initiative subjects.** *Ann Neurol* 2009, **65**:403-413.
64. Fagan AM, Mintun MA, Mach RH, Lee SY, Dence CS, Shah AR, LaRossa GN, Spinner ML, Klunk WE, Mathis CA, DeKosky ST, Morris JC, Holtzman DM: **Inverse relation between in vivo amyloid imaging load and cerebrospinal fluid Aβ(42) in humans.** *Ann Neurol* 2006, **59**:512-519.
65. Blennow K, Hampel H, Weiner M, Zetterberg H: **Cerebrospinal fluid and plasma biomarkers in Alzheimer disease.** *Nat Rev Neurol* 2010, **6**:131-144.
66. Mayeux R, Honig LS, Tang MX, Manly J, Stern Y, Schupf N, Mehta PD: **Plasma Aβ40 and Aβ42 and Alzheimer's disease: relation to age, mortality, and risk.** *Neurology* 2003, **61**:1185-1190.
67. van Oijen M, Hofman A, Soares HD, Koudstaal PJ, Breteler MM: **Plasma Aβ(1-40) and Aβ(1-42) and the risk of dementia: a prospective case-cohort study.** *Lancet Neurol* 2006, **5**:655-660.
68. Hardy J, Selkoe DJ: **The amyloid hypothesis of Alzheimer's disease: progress and problems on the road to therapeutics.** *Science* 2002, **297**:353-356.
69. Page RM, Gutsmiel A, Fukumori A, Winkler E, Haass C, Steiner H: **Beta-amyloid precursor protein mutants respond to gamma-secretase modulators.** *J Biol Chem* 2010, **285**:17798-17810.
70. De Strooper B: **Loss-of-function presenilin mutations in Alzheimer disease. Talking Point on the role of presenilin mutations in Alzheimer disease.** *EMBO Rep* 2007, **8**:141-146.
71. Scheuner D, Eckman C, Jensen M, Song X, Citron M, Suzuki N, Bird TD, Hardy J, Hutton M, Kukull W, Larson E, Levy-Lahad E, Viitanen M, Peskind E, Poorkaj P, Schellenberg G, Tanzi R, Wasco W, Lannfelt L, Selkoe D, Younkin S: **Secreted amyloid beta-protein similar to that in the senile plaques of Alzheimer's disease is increased in vivo by the presenilin 1 and 2 and APP mutations linked to familial Alzheimer's disease.** *Nat Med* 1996, **2**:864-870.
72. Kuperstein I, Broersen K, Benilova I, Rozenski J, Jonckheere W, Debulpaep M, Vandersteeen A, Segers-Nolten I, Van Der Werf K, Subramaniam V, Braeken D, Callewaert G, Bartic C, D'Hooge R, Martins IC, Rousseau F, Schymkowitz J, De

- Strooper B: **Neurotoxicity of Alzheimer disease A β -peptides is induced by small changes in the A β 42 to A β 40 ratio** *EMBO J* 2010, **29**:3408-3420.
73. Czirr E, Leuchtenberger S, Dorner-Ciossek C, Schneider A, Jucker M, Koo EH, Pietrzik CU, Baumann K, Weggen S: **Insensitivity to A β 42-lowering nonsteroidal antiinflammatory drugs and gamma-secretase inhibitors is common among aggressive presenilin-1 mutations.** *J Biol Chem* 2007, **282**:24504-24513.
74. Czirr E, Cottrell BA, Leuchtenberger S, Kukar T, Ladd TB, Esselmann H, Paul S, Schubnell R, Torpey JW, Pietrzik CU, Golde TE, Wiltfang J, Baumann K, Koo EH, Weggen S: **Independent generation of A β 42 and A β 38 peptide species by γ -secretase.** *J Biol Chem* 2008, **283**:17049-17054.
75. Page RM, Baumann K, Tomioka M, Perez-Revuelta BI, Fukumori A, Jacobsen H, Flohr A, Luebbbers T, Ozmen L, Steiner H, Haass C: **Generation of A β 38 and A β 42 is independently and differentially affected by familial Alzheimer disease-associated presenilin mutations and gamma-secretase modulation.** *J Biol Chem* 2008, **283**:677-683.
76. Hwang DY, Chae KR, Kang TS, Hwang JH, Lim CH, Kang HK, Goo JS, Lee MR, Lim HJ, Min SH, Cho JY, Hong JT, Song CW, Paik SG, Cho JS, Kim YK: **Alterations in behavior, amyloid beta-42, caspase-3, and Cox-2 in mutant PS2 transgenic mouse model of Alzheimer's disease.** *FASEB J* 2002, **16**:805-813.
77. Wen PH, Shao X, Shao Z, Hof PR, Wisniewski T, Kelley K, Friedrich VL, Jr., Ho L, Pasinetti GM, Shioi J, Robakis NK, Elder GA: **Overexpression of wild type but not an FAD mutant presenilin-1 promotes neurogenesis in the hippocampus of adult mice.** *Neurobiol Dis* 2002, **10**:8-19.
78. Borchelt DR, Ratovitski T, van Lare J, Lee MK, Gonzales V, Jenkins NA, Copeland NG, Price DL, Sisodia SS: **Accelerated amyloid deposition in the brains of transgenic mice coexpressing mutant presenilin 1 and amyloid precursor proteins.** *Neuron* 1997, **19**:939-945.
79. Savonenko A, Xu GM, Melnikova T, Morton JL, Gonzales V, Wong MP, Price DL, Tang F, Markowska AL, Borchelt DR: **Episodic-like memory deficits in the APPswe/PS1dE9 mouse model of Alzheimer's disease: relationships to beta-amyloid deposition and neurotransmitter abnormalities.** *Neurobiol Dis* 2005, **18**:602-617.
80. Bateman RJ, Siemers ER, Mawuenyega KG, Wen G, Browning KR, Sigurdson WC, Yarasheski KE, Friedrich SW, Demattos RB, May PC, Paul SM, Holtzman DM: **A gamma-secretase inhibitor decreases amyloid-beta production in the central nervous system.** *Ann Neurol* 2009, **66**:48-54.
81. Gillman KW, Starrett Jr JE, Parker MF, Xie K, Bronson JJ, Marcin LR, McElhone KE, Bergstrom CP, Mate RA, Williams R, Meredith JE, Burton CR, Barten DM, Toyn JH, Roberts SB, Lentz KA, Houston JG, Zaczek R, Albright CF, Decicco CP, MacOr JE, Olson RE: **Discovery and evaluation of BMS-708163, a potent, selective and orally bioavailable γ -secretase inhibitor.** *ACS Med Chem Lett* 2010, **1**:120-124.
82. Rinne JO, Brooks DJ, Rossor MN, Fox NC, Bullock R, Klunk WE, Mathis CA, Blennow K, Barakos J, Okello AA, Rodriguez Martinez de Liano S, Liu E, Koller M, Gregg KM, Schenk D, Black R, Grundman M: **¹¹C-PiB PET assessment of change in fibrillar amyloid-beta load in patients with Alzheimer's disease treated with bapineuzumab: a phase 2, double-blind, placebo-controlled, ascending-dose study.** *Lancet Neurol* 2010, **9**:363-372.
83. Siemers ER, Friedrich S, Dean RA, Gonzales CR, Farlow MR, Paul SM, DeMattos RB: **Safety and changes in plasma and cerebrospinal fluid amyloid β after a single administration of an amyloid β monoclonal antibody in subjects with Alzheimer disease.** *Clin Neuropharmacol* 2010, **33**:67-73. doi: 10.1097/WNF.1090b1013e3181cb1577a.
84. Zhao Q, Landen J, Burstein AH, McCush F, Alvey C, Billing CB, Ma WW, Kupiec JW, Bednar MM: **Pharmacokinetics and pharmacodynamics of ponezumab (PF-04360365) following a single-dose intravenous infusion in patients with mild to moderate Alzheimer's disease [abstract].** *Alzheimer's Dement* 2010, **6**:S143.
85. Hinerfeld DA MM, Swearer JM, Baker SP, Caselli RJ, Rogaeva E, St George-Hyslop P, Pollen DA: **Statins differentially affect amyloid precursor protein metabolism in presymptomatic PS1 and non-PS1 subjects.** *Arch Neurol* 2007, **64**:1672-1673.
86. Steinbart EJ, Smith CO, Poorkaj P, Bird TD: **Impact of DNA testing for early-onset familial Alzheimer disease and frontotemporal dementia.** *Arch Neurol* 2001, **58**:1828-1831.
87. Xiong C, Zhu K, Yu K, Miller JP: **Statistical modeling in biomedical research: longitudinal data analysis.** In *Handbook of Statistics*. Volume 27. Edited by Rao CR, Miller JP, Rao DC. London: Elsevier; 2007:429-463.
88. Endo A: **The discovery and development of HMG-CoA reductase inhibitors.** *J Lipid Res* 1992, **33**:1569-1582.
89. Yamamoto A, Sudo H, Endo A: **Therapeutic effects of ML-236B in primary hypercholesterolemia.** *Atherosclerosis* 1980, **35**:259-266.

doi:10.1186/alzrt59

Cite this article as: Bateman RJ, et al.: Autosomal-dominant Alzheimer's disease: a review and proposal for the prevention of Alzheimer's disease. *Alzheimer's Research & Therapy* 2011, **3**:1.