

Supplementary Figures

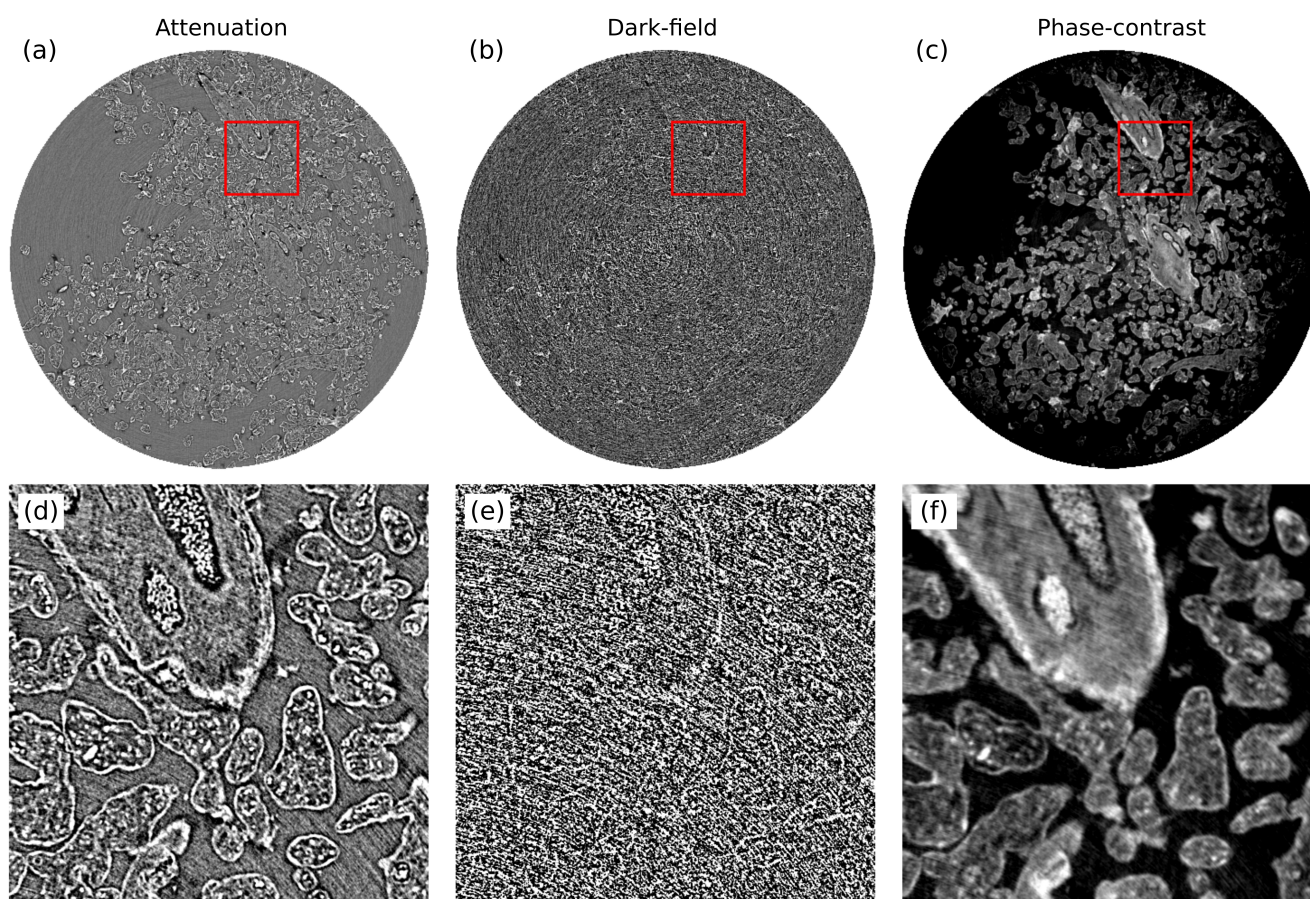


Figure S1. Comparison of the three different signals obtained for MBI with sandpaper. **(a)** Attenuation, **(b)** dark-field and **(c)** phase-contrast reconstructions of the same slice are shown, along with corresponding zoomed ROIs **(d)**-(**f**). The dark-field signal for this sample was significantly affected by noise, making it challenging to discern any structural details.