

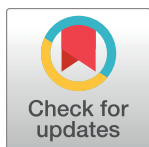
RESEARCH ARTICLE

In vitro assessment of the influence of intravenous extension set materials on insulin aspart drug delivery

Morgane Masse^{1,2}, Mickael Maton³, Stéphanie Genay^{1,2*}, Nicolas Blanchemain³, Christine Barthélémy¹, Bertrand Décaudin^{1,2}, Pascal Odou^{1,2}

1 Univ. Lille, EA 7365 – GRITA - Groupe de Recherche sur les formes Injectables et les Technologies Associées, Lille, France, **2** CHU Lille, Institut de Pharmacie, Lille, France, **3** Univ. Lille, CHU Lille, Inserm, U1008 – Controlled Drug Delivery Systems and Biomaterials, Lille, France

* stephanie.genay@univ-lille.fr



Abstract

Insulin is a frequently prescribed drug in hospitals and is usually administered by syringe pumps with an extension line which can be made of various materials. Two insulin solutions were studied: an insulin analogue, Novorapid[®] which contains insulin aspart and two phenolic preservatives (e.g. phenol and metacresol) and Umuline rapide[®] with human insulin and metacresol as preservative. Some studies have indicated interactions between insulin, polyvinyl chloride (PVC) and polyethylene (PE). The aim of this work was to study such interactions between Novorapid[®] or Umuline rapide[®] and infusion extension line materials (PVC, PE and coextruded (PE/PVC)). Insulin solution at 1 IU/mL was infused at 2 mL/h over 24 hours with 16 different extension lines (8 in PVC, 3 in PE and 5 in PE/PVC). Ultra-Fast Liquid Chromatography with diode array detection (UFLC-DAD) was performed to quantify insulin (human and aspart) and preservatives (metacresol and phenol). Limited human insulin sorption was observed thirty minutes after the onset of infusion: $24.3 \pm 12.9\%$, $3.1 \pm 1.6\%$ and $18.6 \pm 10.0\%$ for PVC, PE and PE/PVC respectively. With insulin aspart, sorption of about 5% was observed at the onset of infusion for all materials. However, there were interactions between phenol and especially metacresol with PVC, but no interactions with PE and PE/PVC. This study shows that insulin interacts with PVC, PE and PE/PVC at the onset of infusion. It also demonstrates that insulin preservatives interact with PVC, which may result in problems of insulin conservation and conformation. Some more studies are required to understand the clinical impact of the latter during infusion.

OPEN ACCESS

Citation: Masse M, Maton M, Genay S, Blanchemain N, Barthélémy C, Décaudin B, et al. (2018) *In vitro* assessment of the influence of intravenous extension set materials on insulin aspart drug delivery. PLoS ONE 13(8): e0201623. <https://doi.org/10.1371/journal.pone.0201623>

Editor: Amitava Mukherjee, VIT University, INDIA

Received: January 12, 2018

Accepted: July 18, 2018

Published: August 16, 2018

Copyright: © 2018 Masse et al. This is an open access article distributed under the terms of the [Creative Commons Attribution License](https://creativecommons.org/licenses/by/4.0/), which permits unrestricted use, distribution, and reproduction in any medium, provided the original author and source are credited.

Data Availability Statement: All relevant data are within the paper.

Funding: The author(s) received no specific funding for this work.

Competing interests: The authors have declared that no competing interests exist.

Introduction

Several studies have already been made describing interactions between insulin and infusion lines. Most of the materials used to infuse drugs intravenously are polyvinyl chloride (PVC), polyethylene (PE) and PE/PVC (this is PVC whose inner surface is coated with a thin layer of PE). Zahid *et al.* [1] showed through a non-separative UV-spectrophotometry method that

Actrapid[®] (rapid human insulin) at 1 IU/mL was adsorbed on PE and PVC tubing. They demonstrated that insulin adsorption was influenced by flow rate, tubing composition and surface area. Hewson *et al.* [2] conducted a study on Actrapid[®] adsorption on extension tubing in di (2-ethylhexyl) phthalate (DEHP)—plasticized PVC in a neonatal unit. They measured insulin by radioimmunoassay, and concluded that insulin was adsorbed on PVC and that this was increased by low concentrations and flow rates. These interactions can have severe consequences since drug concentrations are not totally delivered to patients [3]. The insulin formula used in clinical services consists mainly of insulin (human or modified) and of preservatives (phenol and/or metacresol). Preservative functions are essential, as they help to conserve insulin, a fragile protein, in its most stable conformation [4]. Fuloria *et al.* [5] performed a similar study with regular human insulin and extension line materials in PVC and PE. They concluded that episodes of hypoglycaemia observed in extremely low birth weight infants after several hours of insulin infusion were due to an excess of insulin after saturation of binding sites. Adsorption of insulin lispro and regular human insulin [6] has been studied with intravenous infusion sets in PVC and syringes in polypropylene. These authors also studied the effects of the absence or presence of an in-line filter on the release profile of insulin lispro by high pressure liquid chromatography. They concluded that the adsorption profile is the same for both insulins. Lispro and metacresol insulins were adsorbed after 5 hours on a PVC bag and tubing set, but only after a 24-hour infusion on beaker glass. Adsorption was influenced by a low flow rate, low concentration and the presence of an in-line filter.

Some studies have described strategies to reduce insulin sorption. To minimize sorption between insulin and extension set materials, Fuloria *et al.* [5] used tubing primed with insulin at 5 IU/mL to saturate insulin binding sites. Thus, after 1 hour at 0.2 mL/h, insulin recovery was 22% for unprimed and 42% for primed PVC tubings, whereas it was 19% and 80% for unprimed and primed PE/PVC tubes. Hewson *et al.* [2] used albumin to reduce insulin adsorption on the catheter. Although all these strategies are rarely used in hospitals, it is important for clinicians to take into account interactions between drugs and infusion line materials. Sorption studies on insulin mainly concern human insulin. To our knowledge, no study exists on insulin aspart although it is the most common insulin formula used in clinical services for continuous infusion. Moreover, interactions with PE/PVC tubings have not been sufficiently studied although this material is widely and increasingly used.

The main objective of this work was therefore to study the influence of intravenous extension set material on insulin aspart delivery (maintaining its complete pharmaceutical formula); the secondary objectives were to compare the drug delivery of insulin aspart *versus* human insulin and evaluate the interactions of preservatives with various materials.

Materials and methods

Products

Two commercialized insulin specialities were used: Novorapid[®] (Novo Nordisk, La défense, France) and Umuline rapide[®] (Lilly, Neuilly-sur-Seine, France). Novorapid[®] consists of insulin aspart (100 IU/mL, 3.50 mg/mL), glycerol, phenol (1.5 mg/mL), metacresol (1.72 mg/mL), zinc chloride, disodium phosphate dihydrate, sodium chloride, hydrochloric acid and sodium hydroxide (to adjust pH) and water for injection [7]. Umuline rapide[®] (100 IU/mL, 3.47 mg/mL) consists of human insulin, hydrochloric acid, water for injection, glycerol, metacresol (25 mg/mL), proteins of *Escherichia coli* and sodium hydroxide.

A specificity study was carried out to identify compounds of Novorapid[®] and Umuline rapide[®]. Crystallized phenol (Cooper[®], Melun, France), 99% metacresol (Sigma-Aldrich[®],

St-Louis, USA) and the United States Pharmacopeia (USP) human insulin standard reference (Sigma-Aldrich[®], St-Louis, USA) were applied.

Analytical method

An Ultra-Fast Liquid Chromatographic (UFLC) system (Shimadzu[®], Noisiel, France) was used. It was equipped with a degassing DGU-20A3R unit to eliminate gases in mobile phases, two LC-20ADXR solvent delivery units (Prominence UFLCX series), an SIL-20ACXR auto-sampler, a CTO-20AC column oven and an SPD-M20A photodiode array detector. The spectra were analyzed by Shimadzu Lab solution[®] software.

Chromatographic conditions. The mobile phase was composed of buffer sulphate and acetonitrile (VWR chemicals, Fontenay-sous-Bois, France) (71:29, v/v). Buffer sulphate was made of anhydrous sodium sulphate (28 g/L, Na₂SO₄ 0.2 M) (VWR chemicals, Fontenay-sous-Bois, France) diluted in ultrapure water (Purelab[®] Elga, United Kingdom) and adjusted to pH 2.3 with orthophosphoric acid (Merck, Calais, France), an analytical method adopted from Xu *et al.* [8]. Column temperature was set at 25°C. Flow-rate was fixed at 0.8 mL/min and each run lasted 5 minutes. Separation of components was carried out on a Gemini[™] C18 column (150 × 3 mm i.d., 5 μm) preceded by a C18 cartridge guard (Phenomenex[®], Le Pecq-France). Injection volume was 20 μL and UV detection was performed at 214 nm.

Validation method. This method was validated following the guidelines proposed by Hubert *et al.* [9,10]. Validation was completed over three consecutive days by determining the following parameters: specificity, linearity, limits of detection (LOD) and quantification (LOQ). Limits were calculated as shown in Eqs (1) and (2) according to the methods [11] of the International Council for Harmonisation of Technical Requirements for Pharmaceuticals for Human Use (ICH)

$$\text{LOD} = \frac{3.3 \times \text{standard deviation of intercept}}{\text{slope}} \quad (1)$$

$$\text{LOQ} = \frac{10 \times \text{standard deviation of intercept}}{\text{slope}} \quad (2)$$

Infusion studies

Preparation of insulin samples. Insulin (Novorapid[®] and Umuline rapide[®] 100 IU/mL) was diluted in saline solution (Baxter, Guyancourt, France) to reach 1 IU/mL in 50 mL Plastipak[™] syringes (Becton Dickinson, Le Pont de Claix, France) (Fig 1). Solutions were infused by syringe pumps (Fresenius Vial, Brézins, France) with an infusion rate fixed at 2 mL/hour over 24 hours at room temperature. The distal egress of syringes was connected to different extension tubings. No purge of the infusion lines was carried out so as not to saturate material binding sites. UFLC assays were performed at T0, T30 minutes, T1h, T2h, T3h, T4h, T5h, T6h, T7h, T8h and T24 h.

Materials. Table 1 summarizes the characteristics (material, internal diameter and length) of the extension tubings used. The variety of extension sets studied reflects the variety of practices observed in clinical services and some standardization would obviously be desirable, although different extension lines may be used depending on clinical practices and patient characteristics.

Expression of results. Each extension line was tested in triplicate with each of the two drugs: Novorapid[®] and Umuline rapide[®]. Solutions were collected from the extension tubings and the compounds were dosed by UFLC-DAD.

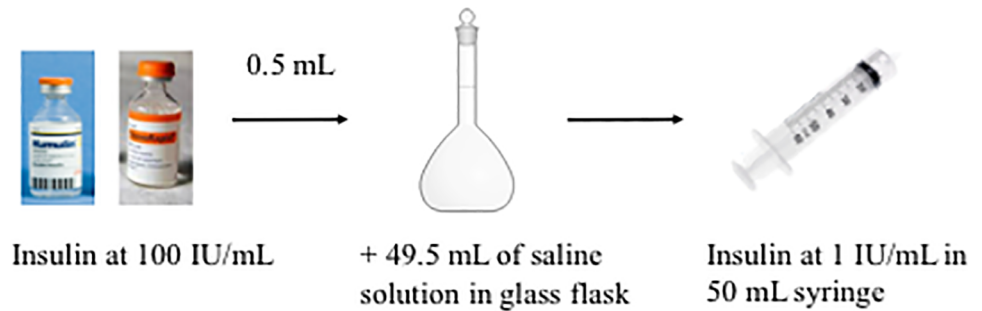


Fig 1. Preparation of insulin samples.

<https://doi.org/10.1371/journal.pone.0201623.g001>

Sorption of Novorapid[®] and Umuline rapide[®] compounds was compared with extension tubings of the same characteristics (internal diameter = 1mm, length = 100 cm) in PVC, PE and PE/PVC by the area under the curve (AUC).

The recovery percentage of each compound was measured during the 24-hour infusion. The percentage was calculated as described in Eq 3 and related to the contact area so that variations due to the use of different lengths and internal diameters were toned down. For each material (e.g PVC, PE and PE/PVC), average recovery percentage was calculated.

$$\text{Percentage recovery of product} = \frac{\text{measured product concentration over}}{\text{original product concentration}} \times 100 \quad (3)$$

The cumulative amount of insulin and preservatives over the first eight hours was measured and compared to the theoretical amount so as to identify the amount administered to patients. The amount at the end of infusion (at T24h) was also measured.

Statistical analysis. After a Shapiro-Wilk normality test, data were compared by nonparametric tests.

For each compound, the AUC of the three materials was compared by a Kruskal-Wallis test.

This test assessed insulin delivery with each extension set. In the presence of a significant p value (< 0.05), an analysis using the Conover and Iman method with Bonferroni correction was made to detect significant differences between couples of extension sets. A Mann-Whitney

Table 1. Characteristics of medical devices.

Material	Internal diameter (mm)	Length (cm) [batch number]			Internal area surface (cm ²)			Supplier
		100	150	200	31.416	70.686	94.248	
PVC 1,2cyclohexane dicarboxylic acid, diisononyl ester (DINCH)- plasticized	1.0	100 [PN3110]	200 [PN3120]		31.416	62.832		Cair LGL (Lissieu, France)
	1.5	100 [PN3210]	150 [PN3215]	200 [PN3220]	47.124	70.686	94.248	
	2.5	100 [PN3310]	150 [PN3315]	200 [PN3320]	78.540	117.810	157.080	
PE	1.0	100 [PE1155.10]	150 [PE1155.15]	200 [PE1155.20]	31.416	47.124	62.832	Vygon (Ecouen, France)
PE/PVC	1.0	100 [PB3110]	150 [PB3115]		31.416	47.124		Cair LGL
	2.5	100 [PB3310]	150 [PB3315]	200 [PB3320]	78.540	117.810	157.080	

PVC: polyvinyl chloride, PE: polyethylene.

<https://doi.org/10.1371/journal.pone.0201623.t001>

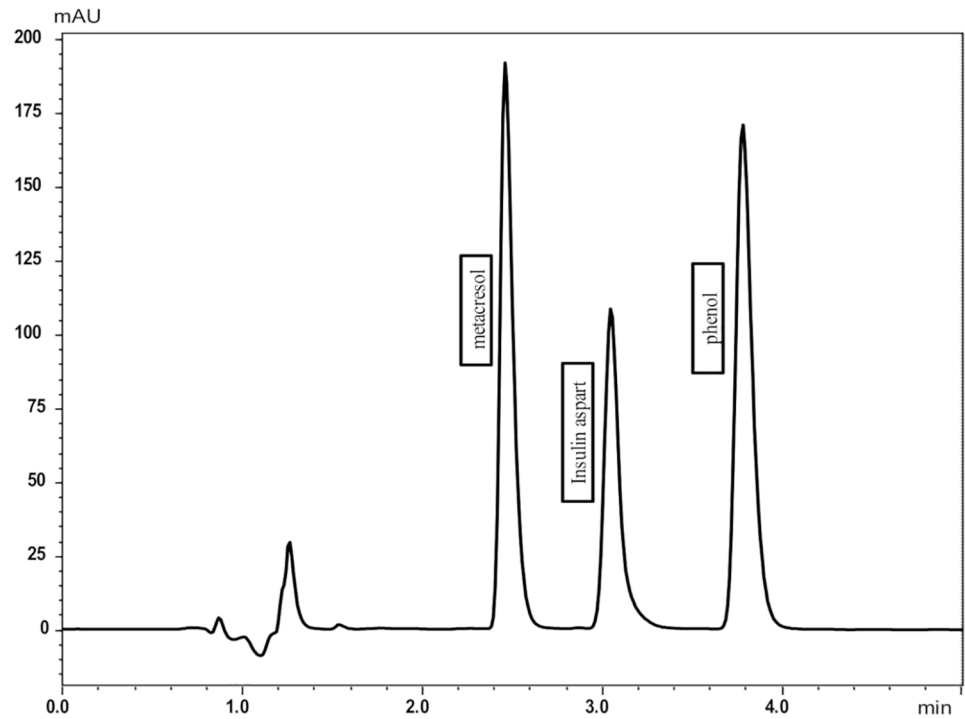


Fig 2. Chromatogram obtained with the UFLC-DAD method described for Novorapid[®].

<https://doi.org/10.1371/journal.pone.0201623.g002>

test was used to compare insulin aspart and human insulin. All of these tests and graphics were made with GraphPad, Prism 6.

Results

Validation method

Good separation of compounds (Fig 2) was obtained with the analytical method and checked by a specificity study.

Metacresol was eluted at 2.2 min, insulin aspart at 3.0 min, human insulin at 3.4 min and phenol at 3.9 min. Good linearity and correlation were obtained for all compounds, in the ranges studied (Table 2). Relative biases were inferior to 5%. LOD and LOQ were compatible with this study.

Comparison of the area under the curve

A comparison of the AUC of compounds for the extension lines (internal diameter = 1mm, length = 100 cm) was carried out for each material. For human insulin, the AUC was not

Table 2. Parameters of the UFLC-DAD assay quantification.

Products	Range	r ²	LOD	LOQ
Human insulin	0.1–2.0 IU/mL	0.9999	0.023 IU/mL	0.046 UI/mL
Insulin aspart	0.5–1.5 IU/mL	0.9999	0.029 IU/mL	0.058 IU/mL
Phenol	7.5–22.5 µg/mL	0.9999	0.139 µg/mL	0.278 µg/mL
Metacresol	8.6–25.8 µg/mL	0.9999	0.211 µg/mL	0.422 µg/mL

LOD: limit of detection, LOQ: limit of quantification

<https://doi.org/10.1371/journal.pone.0201623.t002>

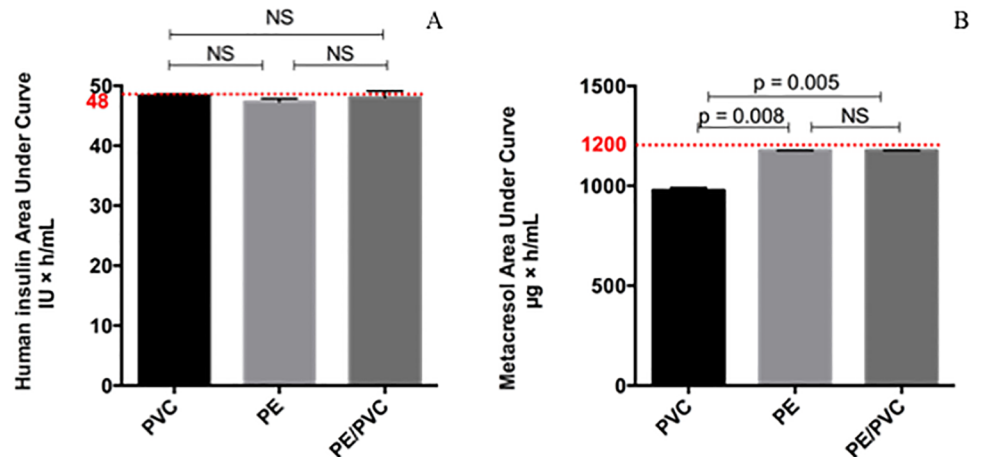


Fig 3. Area under the curve for Umuline rapide[®]: Human insulin (A) and metacresol (B). Statistical difference ($p = 0.05$), NS = not significant.

<https://doi.org/10.1371/journal.pone.0201623.g003>

significantly different from one material to another (Fig 3A) (p . Bonferroni = 0.0083). For metacresol, the AUC differed more with PVC ($978.5 \pm 12.4 \mu\text{g}\times\text{h}/\text{mL}$) than with PE ($1176.3 \pm 0.6 \mu\text{g}\times\text{h}/\text{mL}$), PE/PVC ($1176.4 \pm 0.8 \mu\text{g}\times\text{h}/\text{mL}$) and the theoretical value ($1200.0 \mu\text{g}\times\text{h}/\text{mL}$) (Fig 3B). The percentage loss was equal to 18.5% for PVC and 2% for PE and PE/PVC.

As for human insulin, the AUC of insulin aspart was not statically different between materials (Fig 4A). For phenol and metacresol (Fig 4B and 4C), the AUC was statistically different with PVC ($672.4 \pm 6.6 \mu\text{g}\times\text{h}/\text{mL}$ and $676.1 \pm 2.4 \mu\text{g}\times\text{h}/\text{mL}$ respectively) compared to PE ($716.2 \pm 0.7 \mu\text{g}\times\text{h}/\text{mL}$ and $811.2 \pm 2.4 \mu\text{g}\times\text{h}/\text{mL}$ respectively), PE/PVC ($716.3 \pm 0.8 \mu\text{g h}/\text{mL}$ and $811.0 \pm 2.1 \mu\text{g}\times\text{h}/\text{mL}$ respectively) and the theoretical value ($720.0 \mu\text{g}\times\text{h}/\text{mL}$ and $826.0 \mu\text{g}\times\text{h}/\text{mL}$ respectively). For phenol, the percentage loss was equal to 6.6% for PVC and 0.5% for PE and PE/PVC; for metacresol, the percentage loss was 18.1% for PVC and 1.8% for PE and PE/PVC.

Recovery of compounds over 24 hours of infusion

Umuline rapide[®]. Sorption of human insulin was observed thirty minutes after the onset of infusion for extension lines made of PVC ($24.3 \pm 12.9\%$) and PE/PVC ($18.6 \pm 10.0\%$), but only slight sorption ($3.1 \pm 1.6\%$) was observed with PE. However, the percentage recovery of

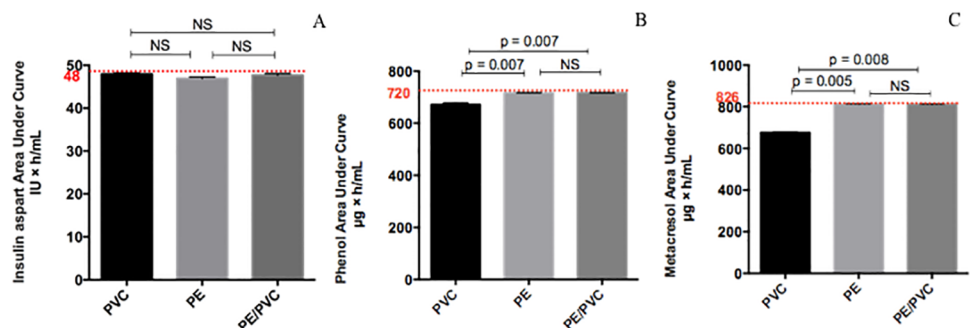


Fig 4. Area under curve for Novorapid[®]: Insulin aspart (A), phenol (B) and metacresol (C). Statistical difference ($p = 0.05$), NS = not significant.

<https://doi.org/10.1371/journal.pone.0201623.g004>

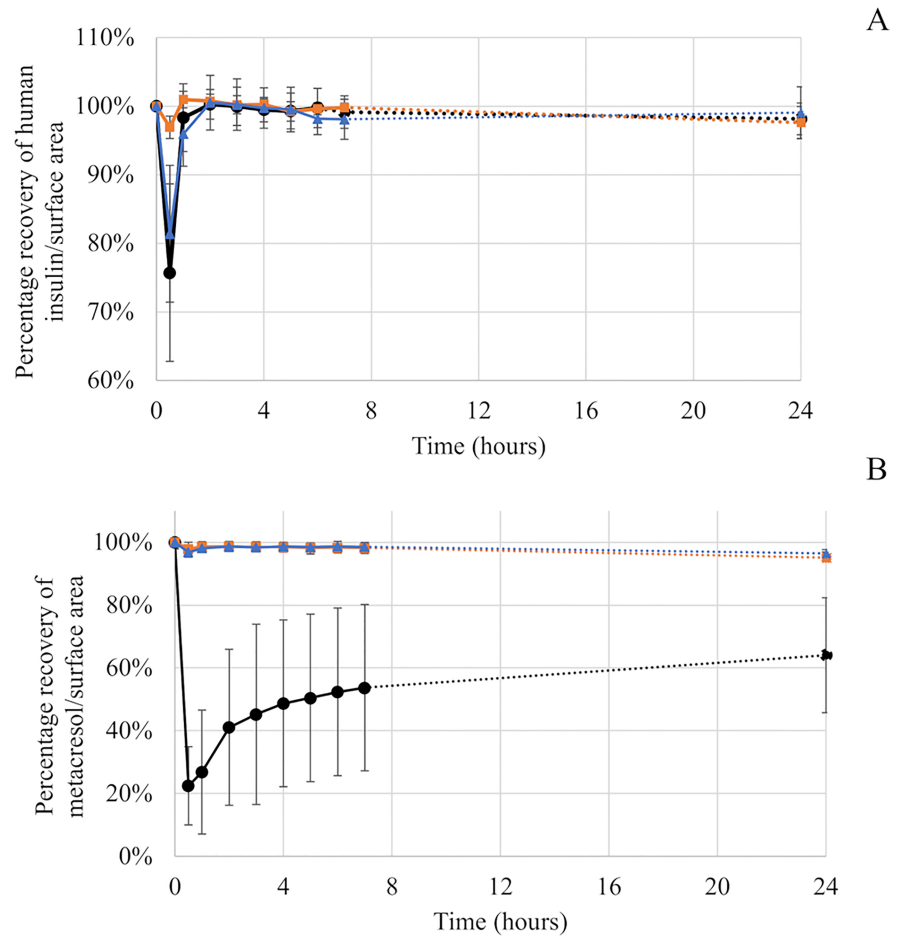


Fig 5. Percentage recovery for Umuline rapide[®]: Human insulin (A) and metacresol (B) during a 24-hour infusion with infusion lines in PVC, PE and PE/PVC.

<https://doi.org/10.1371/journal.pone.0201623.g005>

human insulin reached about 100% over the 24 hours of infusion, for all materials (Fig 5A). With PVC, at thirty minutes, only $22.5 \pm 12.5\%$ of metacresol was administered to patients. This percentage gradually increased to reach $64.0 \pm 18.3\%$ at the end of infusion. For PE and PE/PVC, recovery percentage for metacresol equalled about 100%. A small loss of metacresol was observed at the end of infusion, the percentage being $95.6 \pm 1.8\%$ and $96.6 \pm 1.2\%$ for PE and PE/PVC respectively (Fig 5B). Standard deviations with PVC were high because three lengths and three internal diameters were used.

Novorapid[®]. The evolution of three different compounds of Novorapid[®] during a 24-hour infusion is summarized in Fig 6.

The percentage of insulin aspart was nearly 100% after infusion through extension lines made of the three materials during a 24-hour infusion. However, a loss was observed after thirty minutes: the recovery percentage of insulin aspart was equal to $91.2 \pm 4.6\%$, $89.2 \pm 5.3\%$ and $93.6 \pm 7.2\%$ for PVC, PE and PE/PVC respectively.

As for phenol, the recovery percentage remained superior to $98.6 \pm 0.8\%$ and $98.4 \pm 1.0\%$ for PE and PE/PVC respectively during the 24-hour infusion. However, for PVC, the recovery percentage was $54.1 \pm 16.2\%$ after one hour. The loss of phenol then decreased and the recovery percentage reached $82.5 \pm 10.3\%$ after 24 hours.

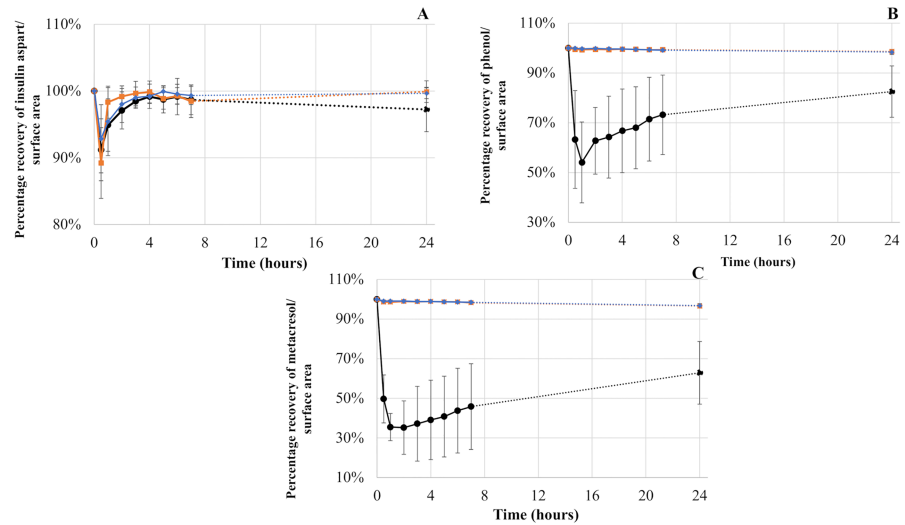


Fig 6. Percentage recovery for Novorapid[®]: Insulin aspart (A), phenol (B) and metacresol (C) during a 24-hour infusion with infusion lines in PVC, PE and PE/PVC.

<https://doi.org/10.1371/journal.pone.0201623.g006>

In the case of metacresol, the percentage remained superior to $96.8 \pm 1.0\%$ and $96.6 \pm 0.5\%$ with infusion lines in PE/PVC and PE respectively. With these two infusion lines, the lowest percentage was obtained at T24h, whereas with PVC infusion lines, the recovery percentage was equal to $35.5 \pm 6.9\%$ after 1 hour of infusion. Metacresol remained at around 40% during the first eight hours and reached $62.9 \pm 15.8\%$ at the end of the 24-hour infusion.

Standard deviations with PVC were high because several lengths and internal diameters were used and sorption results were related to contact area. In fact, eight extension sets were used.

Cumulative amount over eight hours

Umluline rapide[®]. Cumulative amounts of human insulin after eight hours of infusion were not statistically different for the three materials nor from the theoretical amount (16 IU) (Fig 7A). The theoretical amount of metacresol over eight hours of infusion was 400.0 µg and was statistically different from the amount infused with PVC. Metacresol amount was

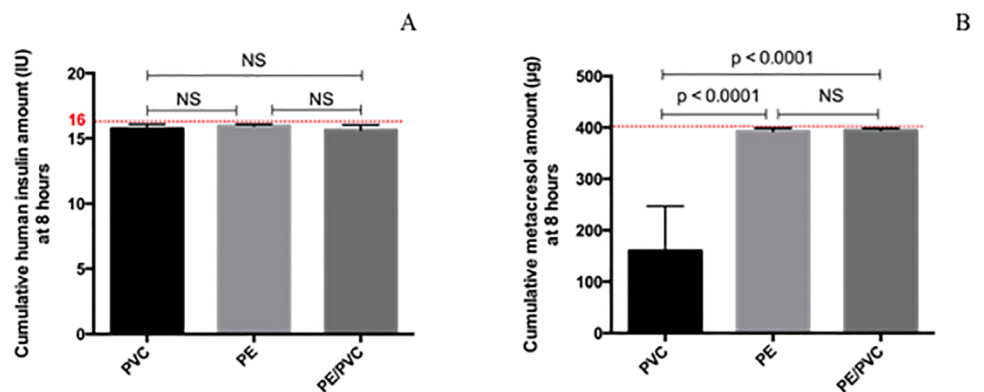


Fig 7. Cumulative amounts during the first eight hours of infusion for Umluline rapide[®]: Human insulin (A) and metacresol (B) with infusion lines in PVC, PE, PE/PVC. Statistical difference ($p = 0.05$), NS = not significant.

<https://doi.org/10.1371/journal.pone.0201623.g007>

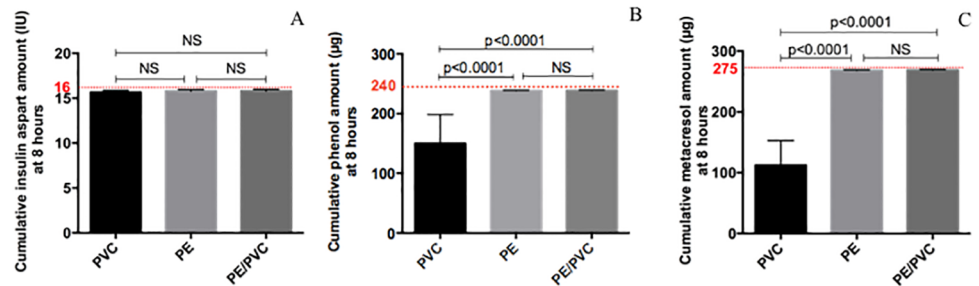


Fig 8. Cumulative amounts during the first eight hours of infusion for Novorapid[®]: Insulin aspart (A), phenol (B) and metacresol (C) with infusion lines in PVC, PE, PE/PVC. Statistical difference ($p = 0.05$), NS = not significant.

<https://doi.org/10.1371/journal.pone.0201623.g008>

significantly different from PVC ($160.1 \pm 86.9 \mu\text{g}$) to PE ($392.2 \pm 6.0 \mu\text{g}$), and from PVC to PE/PVC ($394.0 \pm 3.8 \mu\text{g}$) (p . Bonferroni = 0.0083) (Fig 7B).

Novorapid[®]. Fig 8 summarizes the cumulative amounts obtained with Novorapid[®]. Insulin amount was statistically the same with all materials, around 16 IU and equal to the theoretical amount. Phenol amount calculated after 8 hours of infusion with PVC ($150.1 \pm 48.5 \mu\text{g}$) was statistically inferior to PE ($238.6 \pm 0.7 \mu\text{g}$) and PE/PVC ($238.1 \pm 0.5 \mu\text{g}$) and to the theoretical amount ($240.0 \mu\text{g}$).

As for metacresol, the cumulative amount after an eight-hour infusion differed statistically between PVC ($112.2 \pm 40.6 \mu\text{g}$), PE ($268.2 \pm 0.9 \mu\text{g}$), PE/PVC ($268.6 \pm 1.2 \mu\text{g}$) and the theoretical amount ($275.2 \mu\text{g}$).

The cumulative amounts of insulin aspart, phenol and metacresol were the same for infusion lines in PE and PE/PVC (p . Bonferroni = 0.0083).

Amount at the 24th hour of infusion

Umlin[®] rapide[®]. Human insulin amount was not statistically different whatever the material (2.0 ± 0.05 IU; 2.0 ± 0.05 IU; 2.0 ± 0.08 IU for PVC; PE and PE/PVC respectively) nor from the theoretical amount (2 IU). However, metacresol amount was statistically lower with PVC ($30.7 \pm 11.5 \mu\text{g}$) compared to PE ($47.6 \pm 0.9 \mu\text{g}$) or PE/PVC ($47.7 \pm 0.6 \mu\text{g}$) (Fig 9) (p . Bonferroni = 0.0083) but was not statistically different from the theoretical amount ($50 \mu\text{g}$).

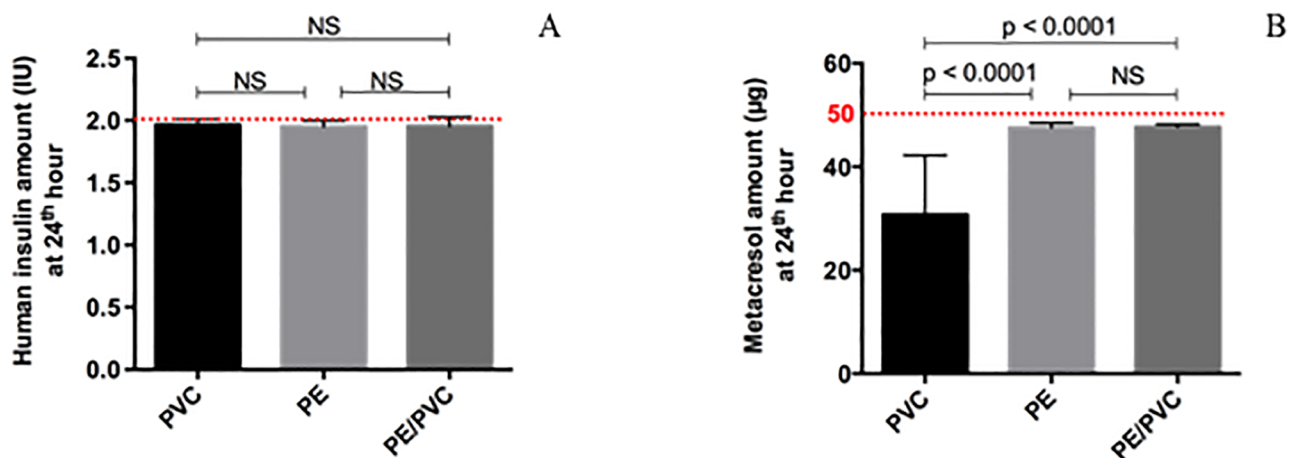


Fig 9. Amount at T24h for Umlin[®] rapide[®]: Human insulin (A) and metacresol (B) with infusion lines. Statistical difference ($p = 0.05$), NS = not significant.

<https://doi.org/10.1371/journal.pone.0201623.g009>

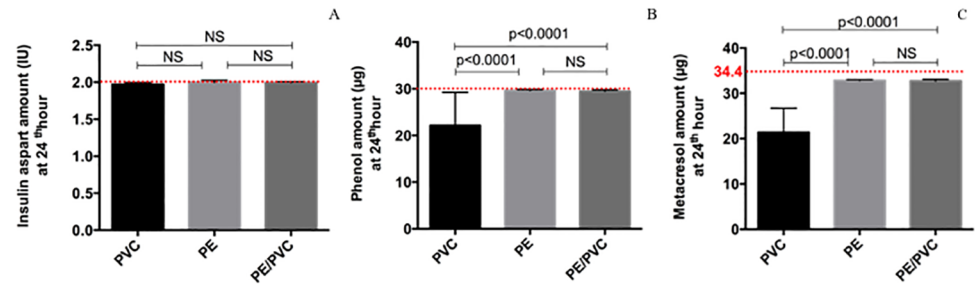


Fig 10. Amount at T24h for Novorapid[®]: Insulin aspart (A), phenol (B) and metacresol (C) with infusion lines. Statistical difference (p = 0.05), NS = not significant.

<https://doi.org/10.1371/journal.pone.0201623.g010>

Novorapid[®]. As for insulin aspart, the amount at T24h was the same for the three materials (1.97 ± 0.03 IU; 2.00 ± 0.03 IU; 1.99 ± 0.02 IU for PVC; PE and PE/PVC respectively). For phenol and metacresol, the amount differed statistically with PVC (22.1 ± 7.1 µg and 21.4 ± 5.4 µg respectively) compared to PE (29.6 ± 0.2 µg and 32.9 ± 0.2 µg respectively) or PE/PVC (29.4 ± 0.3 µg and 32.7 ± 0.3 µg respectively) (Fig 10) (p. Bonferroni = 0.0083).

Insulin sorption comparison between Umuline rapide[®] and Novorapid[®]

The loss of human insulin and insulin aspart with PVC was statistically different during the first three hours (Table 3). At thirty minutes of infusion, human insulin was more greatly adsorbed on PVC than insulin aspart ($24.3 \pm 12.3\%$ and $8.8 \pm 4.6\%$ respectively).

At the onset of infusion with PE infusion lines, the loss of insulin aspart ($10.8 \pm 5.3\%$) was greater than that of human insulin ($3.1 \pm 1.6\%$) (p = 0.005). The recovery percentage was statistically different from one to the other during the first two hours (p = 0.013), when insulin aspart was the more adsorbed (Table 4).

For extension lines in PE/PVC (Table 5), the loss of human insulin ($18.6 \pm 10.0\%$) was statistically greater than for insulin aspart ($7.2 \pm 5.1\%$) at the onset of infusion (p = 0.001).

Discussion/ Conclusion

This study shows that infusion tubing materials have to be considered for drug administration and has demonstrated a close interaction between insulin and the three materials studied

Table 3. Comparison of recovery percentage of both insulins with PVC.

Time	Percentage of recovery (%) Human insulin (Umluline rapide [®])	Percentage of recovery (%) Insulin aspart (Novorapid [®])	P
0.5	75.7 ± 12.9	91.2 ± 4.6	< 0.0001 *
1	98.3 ± 4.9	94.9 ± 3.9	0.0003 *
2	100.3 ± 2.2	97.1 ± 2.8	0.0004 *
3	100.6 ± 2.8	98.5 ± 0.9	0.014 *
4	99.5 ± 1.8	99.2 ± 1.0	0.452
5	99.3 ± 2.6	98.7 ± 2.0	0.101
6	99.7 ± 2.9	99.2 ± 2.7	0.392
7	99.1 ± 2.4	98.7 ± 2.2	0.288
8	99.4 ± 2.4	98.6 ± 2.0	0.260
24	98.1 ± 2.3	97.2 ± 3.3	0.427

* statistical difference (p = 0.05)

<https://doi.org/10.1371/journal.pone.0201623.t003>

Table 4. Comparison of recovery percentage of both insulins with PE.

Time	Percentage of recovery (%) Human insulin (Umline rapide [®])	Percentage of recovery (%) Insulin aspart (Novorapid [®])	P
0.5	96.9 ± 1.6	89.2 ± 5.3	0.005*
1	100.9 ± 1.2	98.3 ± 2.4	0.013*
2	100.7 ± 1.0	99.2 ± 1.2	0.013*
3	100.2 ± 1.3	99.7 ± 1.8	0.377
4	100.2 ± 0.8	99.9 ± 1.6	1.000
5	99.2 ± 1.4	98.9 ± 1.6	0.930
6	99.6 ± 0.9	99.3 ± 1.2	0.659
7	99.8 ± 0.6	98.5 ± 2.4	0.536
8	99.6 ± 1.0	99.2 ± 1.7	0.708
24	97.6 ± 2.3	99.9 ± 1.6	0.042*

* statistical difference (p = 0.05)

<https://doi.org/10.1371/journal.pone.0201623.t004>

(PVC, PE and PE/PVC) as well as a more significant interaction between insulin preservatives and PVC. Maximum loss was observed at the onset of infusion during the first hour. With PVC however, expected preservative amounts were never administered to patients. The binding sites [5] of infusion lines were rapidly saturated with insulin but not with preservatives, especially in the case of metacresol. Few studies have so far been made on insulin interactions with PE/PVC, the use of coextruded PE/PVC lines being fairly recent. The interactions between PVC/PE or PE extension sets and insulin are therefore the same (low energy bonds). Figs 5 and 6 show that the amount of insulin delivered stabilizes at around 2 hours of infusion to reach 100%. If the dose delivered is identical to the pre-infusion dose, the interaction between PE and insulin is monolayer adsorption. Indeed, if the adsorption was a multilayer system, the dose delivered would not reach 100%.

Many care units change insulin syringes every eight hours, corresponding to staff change-over. Insulin is stable for 24h in a polypropylene syringe [12] but no rules are set down for syringe changeover. Nurses can operate following the “quick-change” protocol, or by changing

Table 5. Comparison of recovery percentage of both insulins with PE/PVC.

Time	Percentage of recovery (%) Human insulin (Umline rapide [®])	Percentage of recovery (%) Insulin aspart (Novorapid [®])	P
0.5	81.4 ± 10.0	92.8 ± 5.1	0.001*
1	95.9 ± 4.7	95.4 ± 5.1	0.561
2	100.5 ± 4.0	98.0 ± 2.7	0.263
3	100.2 ± 3.8	99.0 ± 1.6	0.407
4	99.7 ± 2.9	99.2 ± 1.8	0.772
5	99.5 ± 3.3	99.9 ± 0.9	0.361
6	99.0 ± 1.4	99.5 ± 1.5	0.056
7	98.1 ± 2.9	99.3 ± 1.4	0.263
8	98.4 ± 3.2	99.4 ± 1.4	0.226
24	99.1 ± 3.8	99.7 ± 0.8	0.081

* statistical difference (p = 0.05)

<https://doi.org/10.1371/journal.pone.0201623.t005>

both extension line and syringe. It was therefore important to assess the impact of the latter (extension line and syringe changeover) on insulin sorption.

The interaction between human insulin and insulin aspart with PVC was different during the first three hours of infusion. After thirty minutes, the loss of human insulin ($24.3 \pm 12.9\%$) was greater than that of insulin aspart ($8.8 \pm 4.6\%$) and until three hours of infusion, they were statistically different. Later, the percentage was no longer statistically different between the two insulins and reached about 100%. Thirty minutes after the onset of infusion, the sorption of insulin aspart ($10.8 \pm 5.3\%$) with PE infusion tubings was greater than that of human insulin ($3.1 \pm 1.6\%$). It was the opposite for PE/PVC, where sorption equalled $7.2 \pm 5.1\%$ and $18.6 \pm 10.0\%$ for human insulin and insulin aspart respectively.

Our results do not in fact concord with those obtained by Zahid *et al.* [1] who found high sorption of human insulin at 1 IU/mL on PVC tubing, 200 minutes after the beginning of infusion, with an insulin percentage of around 55%. This result can be explained by a flow rate of 0.1 mL/h used for neonates, whereas in our study, flow rate was equal to 2 mL/h [13]. It may also however be due to the non-separating analytical technique used by Zahid *et al.* At its reference wavelength (210 nm), many compounds, and more particularly preservatives, are absorbed into UVs and so the analytical signals for insulin and preservatives may be mingled. Zahid *et al.* [1] also found about a 5% loss of 1 IU/mL Actrapid[®] (human insulin) with infusion tubings in PE at 1 mL/h near the beginning (thirty minutes) of infusion. These results are also concordant with those of Hewson *et al.* [2], for whom the recovery percentage of human insulin at thirty minutes was 95.1% with extension lines in PE.

Our results however showed considerable interaction between preservatives and PVC. The two preservatives contained in insulin aspart behaved differently according to extension line materials. Indeed, with PVC, the percentage loss of metacresol ($50.3 \pm 12.1\%$) was greater than that of phenol ($39.7 \pm 19.6\%$) after thirty minutes of infusion. The same trend was observed during all infusions and so at T24h, the percentage loss was equal to $37.8 \pm 15.8\%$ and $26.3 \pm 10.3\%$ for metacresol and phenol respectively. Hence, the theoretical amount of preservatives was never administered to patients. However, these preservatives are not devoid of toxicity: Weber *et al.* [14] found that phenol and metacresol contained in insulin solutions were both cytotoxic and pro-inflammatory. They showed toxicity at 1.2 mg/mL for phenol and at 0.6 mg/mL for metacresol, indicating that metacresol is more toxic than phenol.

Standard deviations with PVC were high because several lengths and internal diameters were used and values related to the contact area. Indeed, the recovery percentage depends on internal diameter and lengths: for the same length, the larger the internal diameter, the greater the sorption; and for length, the longer it is, the greater the sorption.

The plasticizer used in PVC extension sets was identified by an analytical method previously developed [15] and can have an impact on the sorption of drug molecules. Al Salloum *et al.* [16] showed that diazepam was adsorbed more on PVC tubing plasticized with DINCH than on other tubings plasticized with DEHP, di(ethylhexyl) terephthalate and tris(2-ethylhexyl) trimellitate.

Some studies have described interactions between insulin and PE or PVC but few have used non-separative analytical methods such as UV-spectrophotometry. Actrapid[®] is composed of human insulin and metacresol, but few studies have developed a method to dose preservatives. Moreover, no study has assessed interactions with insulin analogues.

With extension lines in PE and PE/PVC, a slight decline was observed for metacresol (around 2%) at the end of infusion, possibly due to permeation. Teska *et al.* have already noted metacresol evaporation in catheter sets after 48 hours' incubation at 37°C [17].

The two insulin formulations did not contain the same preservatives in the same amount. Metacresol is contained in both Umuline rapide[®] (25 µg/mL) and Novorapid[®] (17.2 µg/mL)

but the percentage loss of metacresol was greater in Umuline rapide[®] than in Novovrapid[®]. Indeed, at T24h with PVC infusion lines, metacresol amount was $19.3 \pm 11.5 \mu\text{g}$ and $12.3 \pm 7.1 \mu\text{g}$ for Umuline rapide[®] and Novorapid[®] respectively. This can be accounted for by the fact that the insulins used did not contain the same amount of preservative and so metacresol amounts varied. Each insulin had therefore a different sorption profile with PVC, impacting differently on drug administration.

These preservative losses can have consequences on the conformational structure of insulin. Mollmann *et al.* [18] used total internal reflection fluorescence to study the adsorption of human insulin to/on Teflon particles. They concluded that insulin adsorbed to this hydrophobic material (i.e. Teflon) with high affinity. Our study showed interactions between insulin and PVC which is a hydrophobic polymer. On contact with the hydrophobic surface, insulin changes its conformation. Indeed, hexamers become monomers which can attach to each other and form filaments [19] which may occlude catheters [20]. In solution, insulin can correspond to four conformations: monomers, dimers, tetramers or hexamers [21]. In pharmaceutical formulations, insulin is presented as a hexamer, because this is the most resistant to fibrillation and degradation [22]. In the bloodstream however, hexamers dissociate to become monomers binding to insulin receptors [23]. Phenolic preservatives result in a hexameric conformation [24,25] which is the most stable insulin conformation.

Teska *et al.* [17,26] showed that insulin aspart deteriorated more rapidly during incubation at 37°C without preservatives which stabilize insulin hexamers against deamidation and intermolecular cross-linking reactions [24]. With low concentrations (2 mM) of preservatives, insulin aspart at 100 UI/mL is systematically below the monomeric size, whereas human insulin at 100 IU/mL is always eluted below the hexameric size (around 80% of hexamers) [27]. Novorapid[®] at 100 IU/mL contains 16 mM of phenol and metacresol, Umuline rapide[®] at 100 IU/mL contains 23 mM of metacresol. The combining propensity of insulin is a major parameter for insulin absorption after subcutaneous injection [28], indicating the importance of preservative amounts in pharmaceutical insulin formulations.

The surface morphology of the 3 materials was observed by scanning electron microscopy (SEM) before and after adsorption with novorapid[®] (insulin aspart) at 1 IU / mL over 24 hours. No differences were noted between extension sets before and after adsorption (smooth surface of tube). In the case of extension sets after adsorption, we observed sodium salts corresponding to the diluent (NaCl 0.9%) of novorapid[®].

Genay *et al.* [29] have already shown that an optimized infusion line can decrease the incidence of hypoglycaemic events. Similarly, effective insulin administration depends on the materials of extension tubings as well as the insulin formulation selected. Further studies are now required to assess the clinical impact of preservative loss on the biological activity of insulin.

In conclusion, this study has shown that human insulin and insulin aspart have a small interaction with PVC at the onset of infusion. No significant interaction was observed between insulin and PE or PE/PVC. However, insulin preservatives such as phenol or metacresol, were adsorbed on PVC but not on PE or PE/PVC. Thus, infusions of commercial insulin specialities should be carried out on extension sets made of PE or PE/PVC.

Acknowledgments

We thank Alexandra Tavernier (M.A. University of Glasgow, Professeur Agrégée, France) for English language and editing assistance.

Author Contributions

Conceptualization: Morgane Masse, Stéphanie Genay, Bertrand Décaudin, Pascal Odou.

Data curation: Mickael Maton, Stéphanie Genay.

Formal analysis: Morgane Masse.

Methodology: Morgane Masse, Stéphanie Genay, Christine Barthélémy, Bertrand Décaudin.

Project administration: Pascal Odou.

Supervision: Stéphanie Genay, Nicolas Blanchemain, Christine Barthélémy, Bertrand Décaudin, Pascal Odou.

Writing – original draft: Morgane Masse, Stéphanie Genay, Nicolas Blanchemain, Christine Barthélémy.

Writing – review & editing: Bertrand Décaudin.

References

1. Zahid N, Taylor KMG, Gill H, Maguire F, Shulman R. Adsorption of insulin onto infusion sets used in adult intensive care unit and neonatal care settings. *Diabetes Res Clin Pract.* 2008; 80: e11–e13. <https://doi.org/10.1016/j.diabres.2008.02.013> PMID: 18395926
2. Hewson M, Nawadra V, Oliver J, Odgers C, Plummer J, Simmer K. Insulin infusions in the neonatal unit: delivery variation due to adsorption. *J Paediatr Child Health.* 2000; 36: 216–220. <https://doi.org/10.1046/j.1440-1754.2000.00488.x> PMID: 10849219
3. Jakobsson T, Shulman R, Gill H, Taylor K. The impact of insulin adsorption onto the infusion sets in the adult intensive care unit. *J Diabetes Sci Technol.* 2009; 3: 213–214. <https://doi.org/10.1177/193229680900300126> PMID: 20046668
4. Teska BM, Alarcón J, Pettis RJ, Randolph TW, Carpenter JF. Effects of phenol and meta-cresol depletion on insulin analog stability at physiological temperature. *J Pharm Sci.* 2014; 103: 2255–2267. <https://doi.org/10.1002/jps.24039> PMID: 24909933
5. Fuloria M, Friedberg MA, DuRant RH, Aschner JL. Effect of flow rate and insulin priming on the recovery of insulin from microbore infusion tubing. *Pediatrics.* 1998; 102: 1401–1406. PMID: 9832576
6. Ling J, Hu M, Hagerup T, Campbell RK. Lispro insulin: adsorption and stability in selected intravenous devices. *Diabetes Educ.* 1999; 25: 237–245. <https://doi.org/10.1177/014572179902500209> PMID: 10531849
7. Poulsen C, Jacobsen D, Palm L. Effect of ethylenediamine on chemical degradation of insulin aspart in pharmaceutical solutions. *Pharm Res.* 2008; 25: 2534–2544. <https://doi.org/10.1007/s11095-008-9670-8> PMID: 18607693
8. Xu X, Fu Y, Hu H, Duan Y, Zhang Z. Quantitative determination of insulin entrapment efficiency in tri-block copolymeric nanoparticles by high-performance liquid chromatography. *J Pharm Biomed Anal.* 2006; 41: 266–273. <https://doi.org/10.1016/j.jpba.2005.10.016> PMID: 16303273
9. Hubert P, Nguyen-Huu J-J, Boulanger B, Chapuzet E, Chiap P, Cohen N, et al. Harmonization of strategies for the validation of quantitative analytical procedures: A SFSTP proposal—part I. *J Pharm Biomed Anal.* 2004; 36: 579–586. <https://doi.org/10.1016/j.jpba.2004.07.027> PMID: 15522533
10. Hubert P, Nguyen-Huu J-J, Boulanger B, Chapuzet E, Cohen N, Compagnon P-A, et al. Harmonization of strategies for the validation of quantitative analytical procedures. A SFSTP proposal—part III. *J Pharm Biomed Anal.* 2007; 45: 82–96. <https://doi.org/10.1016/j.jpba.2007.06.032> PMID: 17716847
11. ICH (International Conference on Harmonisation). Harmonise tripartite guideline—stability testing of new drug substances and products Q1A(R2). 2003. http://www.ich.org/fileadmin/Public_Web_Site/ICH_Products/Guidelines/Quality/Q1A_R2/Step4/Q1A_R2_Guideline.pdf [last accessed 04 March 2017].
12. Melberg SG, Havelund S, Villumsen J, Brange J. Insulin compatibility with polymer materials used in external pump infusion systems. *Diabet Med J Br Diabet Assoc.* 1988; 5: 243–247.
13. Gestion du patient diabétique en péri-opératoire. Disponible sur: http://sfar.org/wp-content/uploads/2016/03/EP5_fiches-imp.pdf. [cité le 25 mars 2018].

14. Weber C, Kammerer D, Streit B, Licht AH. Phenolic excipients of insulin formulations induce cell death, pro-inflammatory signaling and MCP-1 release. *Toxicol Rep*. 2015; 2: 194–202. <https://doi.org/10.1016/j.toxrep.2014.11.019> PMID: 28962351
15. Masse M, Genay S, Feutry F, Simon N, Barthélémy C, Sautou V, et al. How to solve the problem of co-elution between two compounds in liquid chromatography through the first UV derivative spectrum. A trial on alternative plasticizers to di(2-ethylhexyl) phthalate. *Talanta*. 2017; 162: 187–192. <https://doi.org/10.1016/j.talanta.2016.10.029> PMID: 27837816
16. Al Salloum H, Saunier J, Aymes-Chodur C, Barakat H, Yagoubi N. Impact of the nature and concentration of plasticizers on the ability of PVC to sorb drug. *Int J Pharm*. 2015; 496: 664–675. <https://doi.org/10.1016/j.ijpharm.2015.11.004> PMID: 26561727
17. Teska BM, Alarcón J, Pettis RJ, Randolph TW, Carpenter JF. Effects of phenol and meta-cresol depletion on insulin analog stability at physiological temperature. *J Pharm Sci*. 2014; 103: 2255–2267. <https://doi.org/10.1002/jps.24039> PMID: 24909933
18. Mollmann SH, Jorgensen L, Bukrinsky JT, Elofsson U, Norde W, Frokjaer S. Interfacial adsorption of insulin conformational changes and reversibility of adsorption. *Eur J Pharm Sci Off J Eur Fed Pharm Sci*. 2006; 27: 194–204. <https://doi.org/10.1016/j.ejps.2005.09.010> PMID: 16289538
19. Nielsen L, Frokjaer S, Brange J, Uversky VN, Fink AL. Probing the mechanism of insulin fibril formation with insulin mutants. *Biochemistry (Mosc)*. 2001; 40: 8397–8409.
20. Kerr D, Wizemann E, Sensius J, Zacho M, Ampudia-Blasco FJ. Stability and performance of rapid-acting insulin analogs used for continuous subcutaneous insulin infusion: a systematic review. *J Diabetes Sci Technol*. 2013; 7: 1595–1606. <https://doi.org/10.1177/193229681300700620> PMID: 24351186
21. Brange J., Skelbaek-Pedersen B., Langkjaer L., Damgaard U., Ege H., Havelund S., Heding L.G., Jorgensen K.H., Lykkeberg J., Markussen J., Pingel M., E. Rasmussen Galenics of Insulin: The Physico-chemical and Pharmaceutical Aspects of Insulin and Insulin Preparations Springer-Verlag, Berlin, Germany (1987).
22. Lisi GP, Png CYM, Wilcox DE. Thermodynamic contributions to the stability of the insulin hexamer. *Biochemistry (Mosc)*. 2014; 53: 3576–3584. <https://doi.org/10.1021/bi401678n> PMID: 24811232
23. Brange J, Owens DR, Kang S, Vølund A. Monomeric insulins and their experimental and clinical implications. *Diabetes Care*. 1990; 13: 923–954. PMID: 2226110
24. Berchtold H, Hilgenfeld R. Binding of phenol to R6 insulin hexamers. *Biopolymers*. 1999; 51: 165–172. [https://doi.org/10.1002/\(SICI\)1097-0282\(1999\)51:2<165::AID-BIP6>3.0.CO;2-X](https://doi.org/10.1002/(SICI)1097-0282(1999)51:2<165::AID-BIP6>3.0.CO;2-X) PMID: 10397800
25. Smith GD, Ciszak E, Pangborn W. A novel complex of a phenolic derivative with insulin: structural features related to the T→R transition. *Protein Sci Publ Protein Soc*. 1996; 5: 1502–1511. <https://doi.org/10.1002/pro.5560050806> PMID: 8844841
26. Teska BM, Kumar A, Carpenter JF, Wempe MF. Analyzing insulin samples by size-exclusion chromatography: a column degradation study. *J Pharm Sci*. 2015; 104: 1555–1560. <https://doi.org/10.1002/jps.24330> PMID: 25581527
27. Havelund S, Ribel U, Hubálek F, Hoeg-Jensen T, Wahlund P-O, Jonassen I. Investigation of the Physico-Chemical Properties that Enable Co-Formulation of Basal Insulin Degludec with Fast-Acting Insulin Aspart. *Pharm Res*. 2015; 32: 2250–2258. <https://doi.org/10.1007/s11095-014-1614-x> PMID: 25563978
28. Kang S, Brange J, Burch A, Vølund A, Owens DR. Subcutaneous insulin absorption explained by insulin's physicochemical properties. Evidence from absorption studies of soluble human insulin and insulin analogues in humans. *Diabetes Care*. 1991; 14: 942–948. PMID: 1797506
29. Genay S, Décaudin B, Ethgen S, Alluin A, Babol E, Labreuche J, et al. Effect of insulin infusion line on glycaemic variability in a perioperative high dependency unit (HDU): a prospective randomised controlled trial. *Ann Intensive Care*. 2017; 7: 74. <https://doi.org/10.1186/s13613-017-0298-x> PMID: 28699150