

RESEARCH ARTICLE

Adoption and consequences of new light-fishing technology (LEDs) on Lake Tanganyika, East Africa

Huruma Mgana^{1,2*}, Benjamin M. Kraemer^{3^{na}}, Catherine M. O'Reilly⁴, Peter A. Staehr⁵, Ismael A. Kimirei¹, Colin Apse⁶, Craig Leisher⁶, Magnus Ngoile², Peter B. McIntyre^{3^{nb}}

1 Tanzania Fisheries Research Institute, Kigoma, Tanzania, **2** Department of Fisheries and Aquatic Sciences, University of Dar es Salaam, Dar es Salaam, Tanzania, **3** Center for Limnology, University of Wisconsin, Madison, Wisconsin, United States of America, **4** Department of Geography, Geology, and the Environment, Illinois State University, Normal, Illinois, United States of America, **5** Department of Bioscience, Aarhus University, Roskilde, Denmark, **6** The Nature Conservancy, Arlington, Virginia, United States of America

^{na} Current address: IGB Leibniz institute of Freshwater Ecology and Inland Fisheries, Berlin, Germany

^{nb} Current address: Department of Natural Resources, Cornell University, Ithaca, New York, United States of America

* hmgana@gmail.com



OPEN ACCESS

Citation: Mgana H, Kraemer BM, O'Reilly CM, Staehr PA, Kimirei IA, Apse C, et al. (2019) Adoption and consequences of new light-fishing technology (LEDs) on Lake Tanganyika, East Africa. PLoS ONE 14(10): e0216580. <https://doi.org/10.1371/journal.pone.0216580>

Editor: Christos Maravelias, Hellenic Center for Marine Research, GREECE

Received: April 22, 2019

Accepted: October 10, 2019

Published: October 22, 2019

Copyright: © 2019 Mgana et al. This is an open access article distributed under the terms of the [Creative Commons Attribution License](https://creativecommons.org/licenses/by/4.0/), which permits unrestricted use, distribution, and reproduction in any medium, provided the original author and source are credited.

Data Availability Statement: The data are available publicly at DOI: [10.5281/zenodo.3465203](https://doi.org/10.5281/zenodo.3465203).

Funding: Funding for this research was provided by The Nature Conservancy and the Danish International Development Agency (Danida), under the CLEAT project. The funder had no role in study design, data collection and analysis, decision to publish, or preparation of the manuscript.

Competing interests: The authors have declared that no competing interests exist.

Abstract

Maintaining sustainable fisheries requires understanding the influence of technological advances on catch efficiency, as technological creep can ultimately contribute to increased efficiency. Fisheries using light sources for attraction could be widely impacted by the shift to light emitting diode (LED) light systems. We studied the transition from kerosene lanterns to LED lamps in Lake Tanganyika, East Africa, examining factors that led to adoption as well as the impact of the new light sources on fish catch and composition. We used a combination of field experiments with catch assessments, fisher surveys, underwater light spectra measurements, and cost assessments to evaluate the impact of switching from kerosene to LED lamps. Overall, we found a very rapid rate of adoption of homemade outdoor LED light systems in Lake Tanganyika. Most of the batteries used to power these lamps were charged from the city power grid, rather than photovoltaic cells, although the potential exists for a reduction in greenhouse gas emissions. The LED light spectra was distinct from the kerosene light and penetrated much deeper into the water column. Regardless of light type, most of the fish caught within the two dominant species were below maturity. Although the LED lamps were associated with a slight increase in catch, environmental factors, particularly distance offshore, were generally more important in determining fish catch size and composition. The main advantages of the LED lamps were the lower operating costs and their robustness in bad weather. Thus, the primary effect of the use of battery-powered LED lighting systems to attract fish in Lake Tanganyika appears to reduce economic costs and increasing efficiency. However, overall the lake's fishery remains vulnerable to overfishing.

Introduction

Fish are a critical natural resource, and artisanal fisheries provide a key source of protein to many people around the world [1]. If managed properly, fisheries can be considered a renewable resource [2], but advances in technology periodically allow for new access and extraction, and require reassessment of sustainable harvesting [3, 4]. Many changes related to the adoption of new technologies in artisanal fisheries are not documented nor properly assessed, and thus cannot be properly integrated into management strategies [5].

An important natural resource, the pelagic fishery in Lake Tanganyika, East Africa, faces several challenges. This critical fishery substantially contributes to poverty reduction (annual earnings of USD 10 million or greater) and provides food security in all riparian countries (Tanzania, Burundi, The Democratic Republic of Congo, and Zambia). Explicitly, the lake's pelagic fish catches are vital source of food and livelihoods to millions of people living in the lake basin [6, 7]. Presently, fishing pressure is very high with declines in catch per unit effort in some areas of the lake and the potential for local overfishing [7–9]. There are also some indications of destructive fishing methods due to increased presence of illegal fishing gears [10]. These issues of fisheries conservation and sustainability are widespread, as similar challenges exist in the other East African Great lakes as well as other inland lakes and reservoirs [11, 12].

Fishing is an important economic activity of the communities living along the Lake Tanganyika shoreline. For example, there were approximately 27,000 fishermen in the Tanzanian water alone in 2011 with about half of these (10,600 fishermen) operating from the Kigoma region [13]. Also, there were 4,800 fishing crafts in the Kigoma area in 2011; of which 27% were lift-net fishing units employing approximately 7,800 fishermen as crew [13]. The lake's pelagic fishery is composed of six species, two endemic clupeids *Stolothrissa tanganyicae* and *Limnothrissa miodon*, and four endemic centropomids of the genus *Lates*—(*Lates angustifrons*, *Lates mariae*, *Lates stappersii*, and *Lates microlepis*) [6, 14]. Of these, the clupeids ('dagaa') and *L. stappersii* ('migebukwa') are the most dominant parts of the fishery [12], which are caught by artisanal fishers using lift-nets of 6–8 mm mesh sizes and artificial light during dark nights [5, 6, 15]. Moreover, the clupeids predominate by contributing 70–80% of the total landings followed by *L. stappersii* (5–15%), with by-catches of cichlids, catfishes and large *Lates* [5]. The clupeid and some *Lates* species utilize the inshore areas of the lake as breeding and nursery grounds [5, 6]. Also, the inshore areas serve as permanent habitats of diverse cichlid fishes [16]. Therefore, the catch composition is influenced by fishing location and gear type in operation [12].

Understanding the impacts of changes in fishing gear is broadly important for many African lakes, and light attraction is one of the essential factors in pelagic fisheries [5, 17–19]. Historically, fishermen used fire as a source of light to attract and aggregate fish at night for catching pelagic fishes by lift-net, eventually switching to kerosene pressure lamps [6, 15, 20]. Recently, however, there has been a switch in the lighting gears from kerosene to light emitting diode (LED) lamp systems, with unknown effects on catch size and composition. This study aimed to assess the costs of potential consequences of switching from using kerosene lanterns to various types of LEDs systems in Lake Tanganyika. Our overall aim was 1) to understand factors that influence the adoption of this new LED lighting technology and 2) to determine whether LED systems influence overall fish catch and composition.

Material and methods

This study was conducted on Lake Tanganyika, in the north-western region of the lake near Kigoma, Tanzania at two largest fish landing beaches Katonga (4° 54' 55.90" S, 29° 36' 41.43" E) and Kibirizi (4° 51' 38.21" S, 29° 37' 18.12" E) (Fig 1).

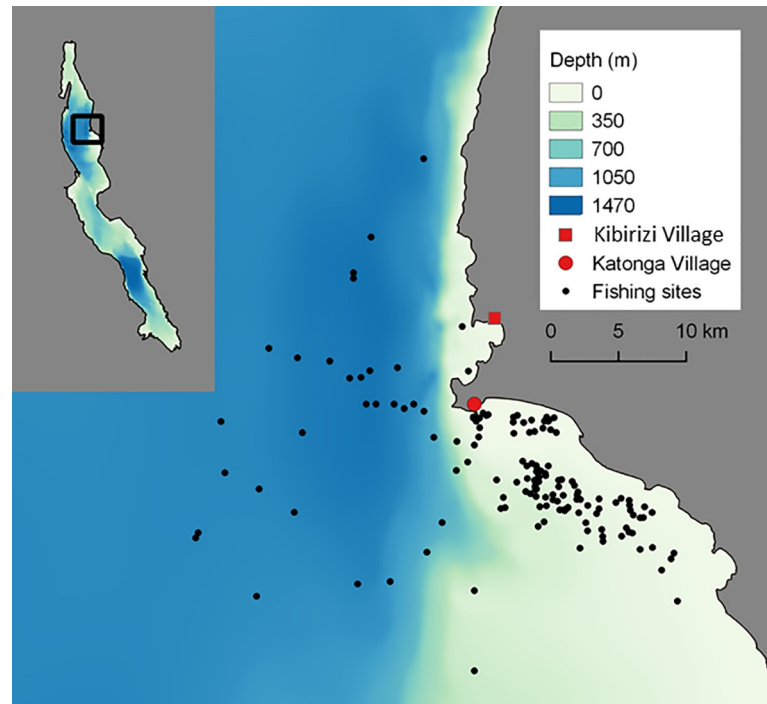


Fig 1. Map of the study site near Kigoma Bay, Tanzania on Lake Tanganyika. The adoption survey of fishermen was conducted at Kibirizi and Katonga villages. The assessment of fish catches was done at Katonga village. Colours represent water depth in the region. Circle size represents size of the catch. Inset shows the region of the study in north-western Lake Tanganyika.

<https://doi.org/10.1371/journal.pone.0216580.g001>

In order to establish the influence of lamp types on catches, three similar fishing units at Katonga were used to compare catches among traditional kerosene lamps ('karabai') and two types of LED lamps, with lamps rotating monthly among units from the end of the dry season (5 October 2015) into the early wet season (1 January 2016). The first LED lamp commonly being used are outdoor LED lights (Model: B-10W) purchased locally and combined into a multi-light system called 'spesho' (hereinafter, LED-S). The second LED system was a commercially available LED system manufactured by Rex Energy (hereinafter, LED-R) (bulbs; Hella Sea Hawk XL 12/2W LED 0950 series), which is currently becoming available in local markets. The wattage per square meter was similar among lamp types and fishing units always set more than a kilometre apart. We purchased the LED-S and kerosene lamps from the local market at Kigoma. This allowed us to establish the cost of each lamp type. The daily costs for charging the batteries that run the LED lamp systems was obtained at the charging kiosk at the landing site. The cost of kerosene was obtained from a fuel vendor located at the landing site.

We measured the total weight of the daily landed catch using a field hanging scale. Fishermen usually arrive at the landing site with their catch of dead fish in a variety of containers with capacity of approximately 5–60 kg. One-to-three homogenized handfuls of the fish sample (approximately 0.5–1.0 kg) were used for species composition analysis. The number of handfuls was based on a visual assessment of the heterogeneity of the catch, as there are only three dominant pelagic species. Individual fishes from each taxon were weighed to the nearest 0.1 gram using a top-loading digital scale (Huazhi Sai Xijie electronic balance, model; TP-A1000), and their total lengths (TL) measured to the nearest millimetre from the tip of the mouth to the largest caudal ray. Fishes were already dead on arrival at the landing sites and were collected from licensed fishermen within Kigoma-Ujiji Municipal Council through the

government authority provided to the Tanzania Fisheries Research Institute and with confirmation from the Lake Tanganyika Authority. None of the fish species in the pelagic are listed as endangered, and no special handling nor animal ethics clearance was required.

To assess whether there were differences in how deep the light from the different lamps penetrated the water column, we measured the spectral properties of each lamp at night. A submersible Stellarnet BLACK-Comet-SR Spectrometer (model, BLK CXR) measured light from 400 to 700 nm at depth (5–467 cm) and we used standard exponential light attenuation models to calculate the depth to which a single photon of light would reach. Moreover, a questionnaire survey was conducted to assess the rapidity of the switch from kerosene lamps to LED lamps at Katonga as well as the other major landing site near Kigoma, Kibirizi (Fig 1).

We collected some of the main environmental parameters known to influence fish catch such as moon phases, fishing distance from the shore (that correlates with water depth) and wind speed [5]. The distance of each fishing site from shore was determined from GPS locations provided by fishers and calculated using QGIS. On nights when GPS data were not available, we estimated fishing location from travel time and bearing, as recorded by the boat captain using a Suunto manual diving compass (model SK4). Average wind speed was calculated for the period of fishing using measurements from an onshore weather station located at TAFIRI-Kigoma. The weather instrument used was Vantage Pro2 (model: 6162EU, Davis Instruments, USA) located at a height of 12 m above the ground. The potential moonlight was estimated as the average moon fullness fraction integrated over the hours when fishing lamps were used, based on moon fullness calendars (<http://aa.usno.navy.mil/data/docs/MoonFraction.php>), and moonrise/moonset times (http://aa.usno.navy.mil/data/docs/RS_OneDay.php). We refer to this as “potential” moonlight because it does not account for cloud cover.

A Boosted Regression Tree (BRT) statistical model was used to factor out the potential influence of environmental variables. The BRT model is a combination of regression decision trees and a boosting algorithm that can account for non-linear relationships between predictor variables and the response, missing predictor data, and interactions between categorical and numeric predictor variables [21]. BRT analysis was completed using the “dismo” [22] and “gbm” [23] packages in R. All BRTs were fit with a model complexity value of “5” allowing for high levels of interactive effects between predictor variables. After fitting the BRT model, we used it to remove the influence of all variables other than lamp type on total daily catches. We did this using the equation

$$C_i = r_i + C_{lamp} \quad (1)$$

Where C_i is the i^{th} observation of total catches with variability attributed to all other variables other than lamp type removed, r_i is the model residual associated with the i^{th} observation, and C_{lamp} is the modelled estimate of total daily catches estimated for each lamp type holding all other predictor variables at their median. We used a similar approach to examine influence on fish size for the three main species.

Results

There was rapid adoption of LED systems for night fishing. All respondents ($n = 26$) who were interviewed were from Kibirizi and Katonga landing sites. The composition constituted boat crews ($n = 17$), boat owners ($n = 8$), and boat owners who practiced fishing by themselves with other crewmembers ($n = 1$). All respondents acknowledged having used LEDs and kerosene lamps at some point in their lifetime as light sources for fishing. The shifts towards using LED lamp systems began in 2010 (Fig 2). Between 2010 and 2012, fishermen used an improvised

LED system locally called 'umua', as the outdoor LED bulbs now used to build LED lamps ('spesho') were not yet available. 'umua' are made by dismantling circuits from LED flashlights and then attaching these inside hemispheres of big stainless-steel bowls or housings of outdoor flood lights. The major shift happened after 2014 when outdoor LED bulbs became available, at which point more than 90% ($n = 24$) of the respondents were using LED lamps. All respondents indicated that they no longer use the pressurized kerosene and have switched to home-made 'spesho' LED lamps between 10 to 22 LED bulbs rated between 3–10 watts; nobody used manufactured LED lamps (LED-R). Most respondents ($n = 17$) believed that LED provided them with better catches.

The operating costs were cheaper for LED systems relative to kerosene lamps. A single kerosene lamp requires 1–2 litres of kerosene daily (US \$ 0.92 per litre during this period) as well as other replacement parts (approximately US \$ 9.0 per month). As fishing is typically done 20 days per lunar cycle, the monthly operating cost for one kerosene lamp is approximately US \$50. As there would be 10–12 lamps per fishing unit, the overall costs for using kerosene lamps would be a monthly cost of approximately US \$ 500 per fishing unit. For LED lamps, batteries were charged at established kiosks at the landing sites for around US \$0.92–1.40 per day. Typically, the charge lasts one to two nights of fishing, and each fishing unit uses two batteries (i.e. one battery per fishing boat), so the monthly costs for using LED lamps would be US \$40 - \$60 per fishing unit. Most of the batteries being used to run the LED systems were being charged from the city main power supply (73%). Only 15% of the respondents used solar panels, while 12% alternated between city power and solar panel charging kiosks to charge their batteries during the rainy and dry seasons respectively.

The adoption of LED lamps has been straightforward. Fishers did not require to alter the size and dimensions of most of their accessories used in fishing, including the lift-net sizes and the lengths of the poles for hauling the net and holding the lamps. Likewise, boat size and number of fishermen have remained the same as when kerosene lamps were being used, and the depth to which they deploy their lift-nets was still the same (around 100 m).

In terms of light energy emission, the LED lamps outperformed kerosene lamps. Light attenuation was greatest for kerosene lamps ($K_d = 1.66 \text{ m}^{-1}$), followed by the manufactured (LED-R) and homemade 'spesho' (LED-S) systems. ($K_d = 0.53 \text{ m}^{-1}$ and 0.46 m^{-1} respectively). Correspondingly, the depth at which one photon of light would be present from each lamp type was deepest for LED-S (125 m), followed by LED-R (120 m), and considerably shallower for the kerosene light (70 m).

Catches with LED lamps were slightly higher than the catches with kerosene lamps, but variation was explained primarily by environmental conditions (Fig 3, Table 1). Total daily catches ranged from 0 to 1476 kg of fish per unit per night with a mean catch of 76 kg and a median catch of 21 kg. For total catch, the BRT model performed well as observed and modelled data were highly correlated ($r = 0.79$, Kendall rank correlation) with a median absolute error of 1.95 kg. The model also revealed that lamp type had a weak average effect on the total daily catches of fish per boat pair compared to the other predictors in the BRT model (relative influence = 8.2%) (Table 1). The distance from the shoreline, moonlight, and wind speed were found to be influential factors in the amount of fish caught per day per fishing unit, where their relative influences were 36.7, 22.2 and 11.8% respectively (Fig 3). Distance from shore was important up until about 5 km, beyond which it did not strongly influence catch. The duration of lighting, time net was hauled, and lamp type were less important when compared with the previous three environmental variables (relative influence of 8.9, 7.8 and 7.2% respectively; Fig 3). Within the lamp types, fishers using 'spesho' LED-S (30.9%) and manufactured LED-R (66.0%) lamps caught more fish as compared to fishers who were using kerosene

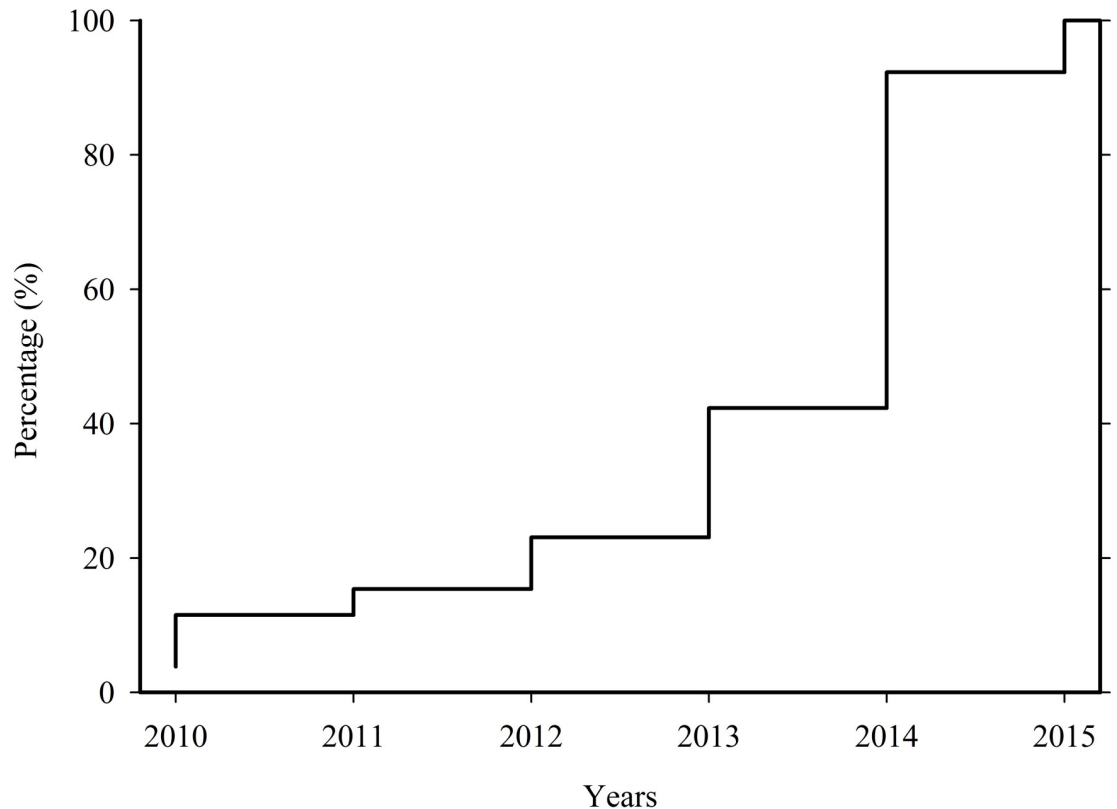


Fig 2. Cumulative percentage (%) of fishers switching from kerosene lanterns to LED-based lighting systems, showing the rapid adoption of this technology.

<https://doi.org/10.1371/journal.pone.0216580.g002>

lamps. Finally, boat owners had no influence on the daily catches, when other factors were taken into account in the BRT model.

After removing the variability in *L. stappersi* catches attributed to other factors, fishers using LED-S and LED-R lamps caught more *L. stappersi* on average (about 2.9% and 5.2% more, respectively) than fishers using kerosene lamps (Table 1). The BRT model for *L. stappersi* total catches performed poorly with observed and modelled data weakly correlated ($r = 0.35$, Kendall rank correlation) and a median absolute error of 3.13 kg. Lamp type had a weaker than average effect on the total daily catches of fish per boat pair compared to the other seven predictors in the BRT model (relative influence = 3.2). Lamp type accounted for only 4.1–7.6% of the variation in average fish size explained by the BRT.

Overall, the clupeids *S. tanganyicae* and *L. miodon* made up the bulk of the fish biomass caught during the experiment by contributing about 87% of the total catches (Fig 4). *L. stappersii* were also common but rarely dominated the total catches (12%). The remainder of the catch was composed of a range of species. These included the killifish *Lamprichthys tanganyicae* and the deep-water cichlid *Bathybates* that feeds on pelagic species. *Chelaethiops boulengeri* is a pelagic cyprinid found in the Malagarasi River and the pelagic and coastal zones of Lake Tanganyika. Moreover, although rarely, nearshore demersal fish species (mainly cichlids) were also caught. Occasionally, pelagic shrimp ranging from 1–2 cm long were found in the fish catches and some sponges that are commonly found on soft bottom in the lake were also recorded.

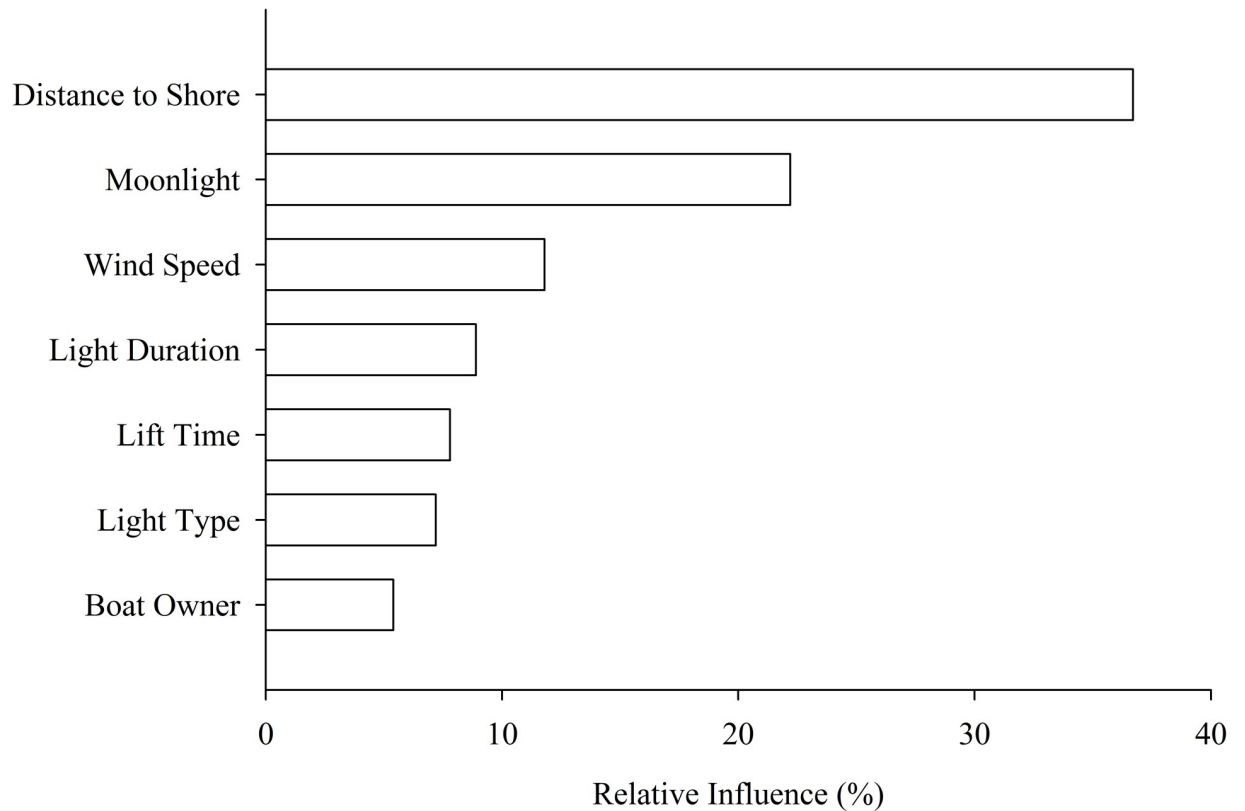


Fig 3. The relative importance of 7 drivers of fish catch variability. While the kind of light used has a small effect on fish catches, this effect is outweighed by other drivers of fish catch variability.

<https://doi.org/10.1371/journal.pone.0216580.g003>

Discussion

The rapid adoption of LED lamps was driven by the relatively low operating costs compared to kerosene lamps. Our estimate of about US \$ 50 per month operating costs for the use of a single kerosene lamp is similar to the cost found for the East African region by [24]. The operating costs of LED lamps were eight to twelve times lower than kerosene lamps. For a complete economic analysis, the lifetimes and costs associated with the batteries would also need to be incorporated. The adoption of the LED lamps has led to the replacement of kerosene-selling kiosks with businesses associated with battery charging powered by city grid or diesel generators in remote areas. There are sustainable ways of charging LED lamp batteries by using solar

Table 1. Results from the Boosted Regression Tree analyses showing differences among the lamp types for fish catch and size.

	Total catch	Catch <i>L. stappersi</i>	Catch clupeids	Size <i>L. stappersi</i>	Size <i>S. tanganycae</i>	Size <i>L. miodon</i>
Relative influence of light type (%)	8.19	3.16	8.22	3.71	2.37	9.41
Model mean absolute error	1.95	3.13	1.73	1.38	0.36	2.77
Correlation between modelled and observed data	0.79	0.35	0.70	0.47	0.52	0.43
Median with kerosene	11.1	0.97	10.8	25.33	1.68	8.22
Median with LED-S	14.5	1.00	14.7	25.38	1.77	9.80
Median with LED-R	18.4	1.02	20.7	25.46	1.74	9.99

Units are kg for catch, mm for fish size.

<https://doi.org/10.1371/journal.pone.0216580.t001>

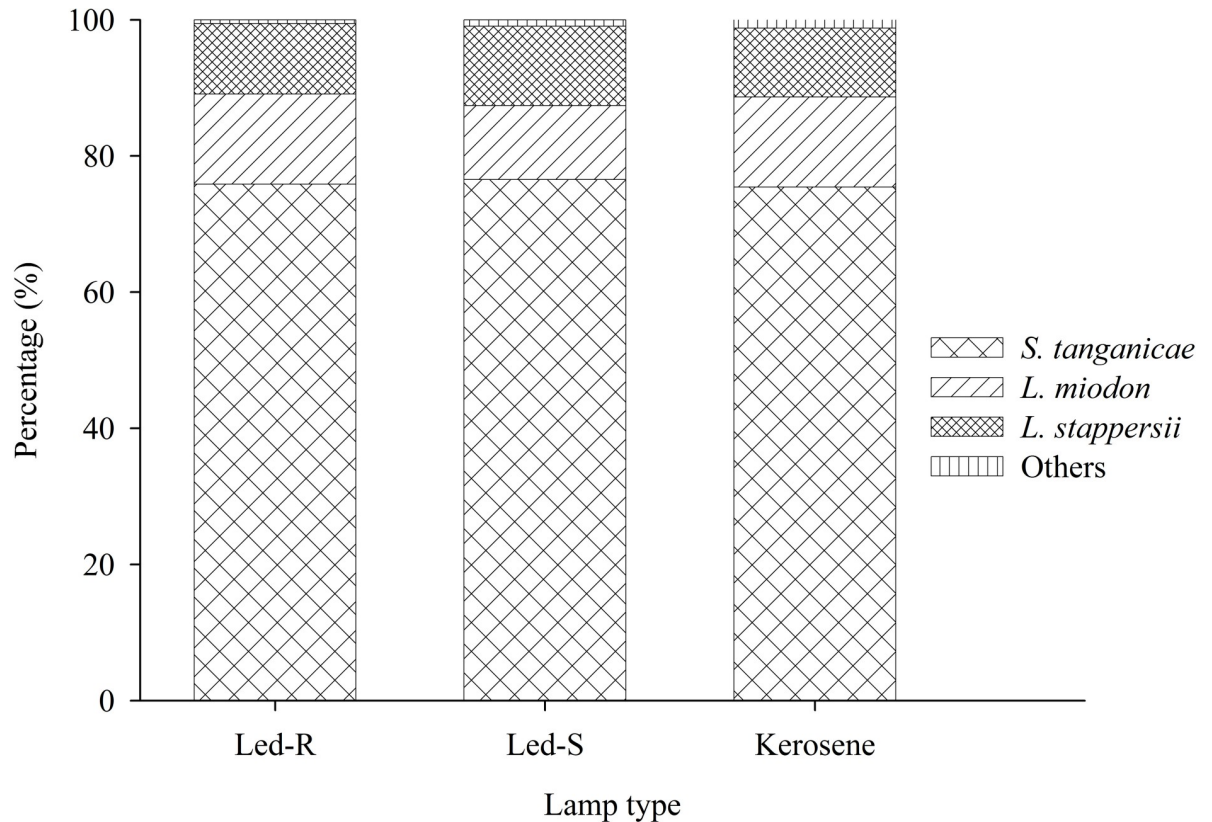


Fig 4. Species composition by weight of all fish caught in the study as a function of fishing lamp type.

<https://doi.org/10.1371/journal.pone.0216580.g004>

panels [24, 25]], but the initial investment cost in solar panels is high for an individual fishing team. The shift toward outdoor LEDs bulbs began in 2013, when they became available in local shops around Kigoma at a reasonable price (US \$ 5 per bulb). The ability to design lower-cost, locally appropriate LED lamps is probably one of the contributing factors for the adoption [24]], as LED systems (such as LED-R) made for specifically for fishing are expensive (US \$ 175) relative to what is earned from fishing [24]].

The LED lamps also performed better in poor weather conditions compared to kerosene lamps. In addition to the low operating costs, fishers mentioned robustness of LED lamps as being among the reasons that inspired the shift. Some of the fishermen reported that on wavy nights, they have inadvertently submerged the LED lamps in water repeatedly without them being damaged. Thus, the robustness of the LED lamps allows them to perform their fishing activities better in wet and windy conditions compared to kerosene lamps, something that has not been noted specifically by other studies of artisanal fisheries [24–26]].

Lamp type had only a minor effect on catch size (Fig 3). Units that were fishing using LED-S and LED-R had slightly higher catches compared to units equipped with kerosene lamps (Table 1). There are several possible reasons for why there was not a more substantial difference in catch between the LED and the kerosene lamps. The deeper penetration of the LEDs may have attracted more fish to the fishing nets, but those additional fish could have stayed at a depth where they were not caught by the fishing nets. Alternatively, any addition to the catches may have been offset by the relatively narrow beam of the LEDs which casts a relatively narrow search area compared to the more diffuse kerosene lanterns, or by the relative brightness, which can affect fish response [24], as the LED lamps are more challenging for

fishermen to dim. Catches did not differ between the two different LED lamp types, whether they were locally made from outdoor LEDs (LED-S) or a specialty LED for fishing (LED-R). These findings are consistent with other studies on freshwater fisheries [25]; studies that have found a large impact of switching to LED lamps relative to metal halide [27, 28] or compact fluorescent lamps [29] have been done in marine systems. In Lake Tanganyika, it appears that there is so much variation in other factors, such as environmental conditions and decisions on where to fish (likely influenced by fuel costs), that overall the effect of the LED lamps on catches is minimized or cancelled out by these other factors. The adoption of new technologies has not necessarily led to increased catch for all units in other fisheries, and variation can be substantial [30].

Lamp type did not have any effect on catch composition. The three species that were dominant in the fish catches are also dominant in the pelagic zone, where there are six species in total the four centropomids and two clupeids [6, 7]. Even though their contribution was small, the other species that were caught are typically associated with near-shore or shallow environment (e.g. cichlids and sponges), consistent with the GPS coordinates provided by the fishermen showing fishing near the shoreline on some occasions (Fig 1). Sometimes the fishermen decide to fish nearshore because they believe the catch will be better and to save cruising fuel. In some cases, this decision is due to bad weather, and since our study period included months in the rainy season, strong storms could have occurred that affected their decision-making. Interestingly, the catches of small pelagic shrimp imply that nets were mended in such a way, potentially deliberately, that mesh size is reduced as the net is hauled up. Overall, lift-net fishing closer to the shore results in greater catches of juveniles [5]; however, the extent to which this could influence the overall fishery and lake ecology is complex [31].

Our results indicated that a wide range of factors influenced fish catches in addition to lamp type. Patchiness in pelagic fish catches is broadly recognized and is due to a range of factors, including environmental parameters, resource availability, predator-prey interactions, intraspecific relationships and habitat use [5, 32, 33]. In our study, wind speed and moonlight were the main factors other than distance from the shore that affected fish catch. During high winds, rough water surface affects the beaming angle of light and refractions are more likely to happen. If the drifting speed is too high; fish may not stay with the lamp light. Moonlight counteracts the artificial lamp light and makes it less likely that fish congregate around artificial lamps placed close to the fishing nets, so fishermen generally do not fish during full moon [5, 6]. The patchy spatial distribution of fishes (Fig 1) is reflected in the fact that the current variation in daily catches is only partially explained (21%) by the environmental variables we had included in our analysis.

Our study highlights a range of emerging issues for the Lake Tanganyika pelagic fishery. These results concur with previous studies [27–29], indicating LED lamps only lead to small increases in catch and benefits come primarily in the form of operational cost savings, especially in kerosene fuel purchases [26]. An exception might be in a large Mediterranean lake, where the introduction of LED lamp rafts to replace kerosene lamps increased catch by 67% [25]. Here, the use of LED lights primarily increased the efficiency of the fishing units and may have improved the working conditions for the fishermen without substantially increasing catch. At the same time, there are aspects of the fishery that underscore its vulnerability to overfishing, especially given changes in lake conditions associated with climate change [34]. Many fish are landed below size at maturity, the costs for entry to the fishery are low and there are no limits. Exploitation rates are high and there are no limits to effort, and modifications to approved gears allows them to be destructive. Thus, factors such as regulation and/or enforcement of size limits, mesh size, and total effort remain critically important for management of harvest and fish stocks.

The adoption of the new LED lamp technology on Lake Tanganyika was rapid and cost-effective, but the long-term environmental impacts are harder to discern. Nonetheless, a reduction in greenhouse gas emissions may be realized on a long-term scale since the lake hosts thousands of fishers, which means that small individual reductions in greenhouse gases over time can be significant. Also, the adoption of LEDs ensures increased safety from reduced use and transport of kerosene, not just on the lake but across the entire supply chain. The LED lamps substantially reduce daily operating costs, but are not necessarily a clean technology, as city power or generators are used for battery charging. However, a transition to using solar panels to charge batteries could contribute a substantial reduction in emissions from the fishery, given the large number of units on the lake; this may require developing charging systems that can be as effective in the rainy season when cloud cover is common. We recommend proper disposal of the lead-acid batteries being used by fishermen to power their lamps. Since fishermen will continue fishing during bad weather with the LED lamps (whereas with kerosene lamps they would not), future work could look at the potential impacts on long-term fish catches and fishing pressure. We also suggest that information about technological innovations is included as part of monitoring the fishery to facilitate determining the influence of environmental change relative to technological innovation for the future of the fishery [4]. For example, one consequence of the cost-efficiency of using LED lamps in Lake Tanganyika is the emergent use of auxiliary boats with LED lamps, as well as an increase in the number of LEDs per unit, both of which could ultimately have an influence on catches. Thus, while the adoption of new LED technology may not have had a large effect on fish catches per unit on Lake Tanganyika, over time the combination of new approaches facilitated by technology can ultimately contribute to an increase in fishing capacity [3] and have implications for sustainability.

Acknowledgments

We thank Peter Limbu at The Nature Conservancy (TNC) for help with logistical arrangements and Omary Kashushu for help with field work and data collection, as well as staff at Tanzania Fisheries Research Institute (TAFIRI) for assistance and support. TAFIRI is acknowledged for providing a study leave for HM, and the Department of Fisheries of Tanzania for approving the study. We acknowledge the Secretariat of the Lake Tanganyika Authority (LTA) for supporting and approving the study. We thank the fishermen and boat owners for participating and the Beach Management Units at Kibirizi and Katonga and the municipal fisheries officers for allowing us to conduct the surveys and assisting with the selection of boat owners. We are grateful to the anonymous reviewers for their constructive criticisms, which improved our work.

Author Contributions

Conceptualization: Huruma Mgana, Benjamin M. Kraemer, Ismael A. Kimirei, Peter B. McIntyre.

Data curation: Huruma Mgana, Benjamin M. Kraemer, Craig Leisher.

Formal analysis: Huruma Mgana, Benjamin M. Kraemer, Catherine M. O'Reilly, Peter A. Staehr, Ismael A. Kimirei.

Funding acquisition: Peter A. Staehr, Colin Apse, Peter B. McIntyre.

Investigation: Huruma Mgana, Benjamin M. Kraemer, Peter A. Staehr, Ismael A. Kimirei.

Methodology: Huruma Mgana, Benjamin M. Kraemer, Peter A. Staehr, Ismael A. Kimirei, Peter B. McIntyre.

Project administration: Huruma Mgana.

Supervision: Ismael A. Kimirei, Magnus Ngoile.

Validation: Craig Leisher.

Visualization: Huruma Mgana, Benjamin M. Kraemer, Catherine M. O'Reilly.

Writing – original draft: Huruma Mgana, Benjamin M. Kraemer, Catherine M. O'Reilly.

Writing – review & editing: Huruma Mgana, Benjamin M. Kraemer, Catherine M. O'Reilly, Peter A. Staehr, Ismael A. Kimirei, Colin Apse, Craig Leisher, Magnus Ngoile, Peter B. McIntyre.

References

1. Costello C, Gaines SD, Lynham J. Can catch shares prevent fisheries collapse? *Science*. 2008; 321(5896):1678–81. <https://doi.org/10.1126/science.1159478> PMID: 18801999
2. Worm B, Hilborn R, Baum JK, Branch TA, Collie JS, Costello C, et al. Rebuilding global fisheries. *science*. 2009; 325(5940):578–85. <https://doi.org/10.1126/science.1173146> PMID: 19644114
3. Marchal P, Andersen B, Caillart B, Eigaard O, Guyader O, Hovgaard H, et al. Impact of technological creep on fishing effort and fishing mortality, for a selection of European fleets. *ICES Journal of Marine Science*. 2006; 64(1):192–209.
4. Holland DS. Planning for changing productivity and catchability in the Maine lobster fishery. *Fisheries Research*. 2011; 110(1):47–58.
5. Munyandorero J. The Lake Tanganyika clupeid and latid fishery system: indicators and problems inherent in assessments and management. 2002.
6. Coulter GW. Lake Tanganyika and its life. Coulter GW, editor. London: British Museum (Natural History) and Oxford University Press; 1991.
7. Mölsä H, Reynolds J, Coenen E, Lindqvist O. Fisheries research towards resource management on Lake Tanganyika. *Hydrobiologia*. 1999; 407:1–24.
8. Cirhuza DM, Micha J-C, Ntakimazi G, Muderhwa N. Brief evaluation of the current state of fish stocks landed by artisanal fishing units from the extreme northwest part of Lake Tanganyika. *International Journal of Fisheries and Aquatic Studies*. 2015; 2:41–8.
9. Sarvala J, Salonen K, Järvinen M, Aro E, Huttula T, Kotilainen P, et al. Trophic structure of Lake Tanganyika: carbon flows in the pelagic food web. From Limnology to Fisheries: Lake Tanganyika and Other Large Lakes: Springer; 1999. p. 149–73.
10. Van der Knaap M, Katonda K, De Graaf G. Lake Tanganyika fisheries frame survey analysis: Assessment of the options for management of the fisheries of Lake Tanganyika. *Aquatic Ecosystem Health & Management*. 2014; 17(1):4–13. <https://doi.org/10.1080/14634988.2014.882733>
11. Van der Knaap M. May we eat biodiversity? How to solve the impasse of conservation and exploitation of biodiversity and fishery resources. *Aquatic ecosystem health & management*. 2013; 16(2):164–71.
12. Jamu D, Banda M, Njaya F, Hecky RE. Challenges to sustainable management of the lakes of Malawi. *Journal of Great Lakes Research*. 2011; 37:3–14.
13. LTA-Secretariat. Lake Tanganyika Regional Fisheries Frame Survey 2011, Bujumbura, Burundi, 30 pp. 2012.
14. Patterson G, Makin J. The State of Biodiversity in Lake Tanganyika-A Literature Review. Chatham, UK: Natural Resource Institute; 1998.
15. Kimirei I, Mgaya Y, Chande A. Changes in species composition and abundance of commercially important pelagic fish species in Kigoma area, Lake Tanganyika, Tanzania. *Aquatic ecosystem health & management*. 2008; 11(1):29–35.
16. Konings A. Tanganyika cichlids in their natural habitat: Cichlid Press El Paso; 1998.
17. Ben-Yami M. Attracting fish with light: Food & Agriculture Org.; 1988.
18. Downing AS, van Nes EH, Balirwa JS, Beuving J, Bwathondi P, Chapman LJ, et al. Coupled human and natural system dynamics as key to the sustainability of Lake Victoria's ecosystem services. 2014.
19. Weyl O, Kazembe J, Booth A, Mandere D. An assessment of a light-attraction fishery in southern Lake Malawi. *African Journal of Aquatic Science*. 2004; 29(1):1–11.

20. van Zwieten PAM, Roest FC, Machiels MAM, van Densen WLT. Effects of inter-annual variability, seasonality and persistence on the perception of long-term trends in catch rates of the industrial pelagic purse-seine fishery of northern Lake Tanganyika (Burundi). *Fisheries Research*. 2002; 54(3):329–48. [http://dx.doi.org/10.1016/S0165-7836\(01\)00267-3](http://dx.doi.org/10.1016/S0165-7836(01)00267-3).
21. Elith J, Leathwick JR, Hastie T. A working guide to boosted regression trees. *Journal of Animal Ecology*. 2008; 77(4):802–13. <https://doi.org/10.1111/j.1365-2656.2008.01390.x> PMID: 18397250
22. Hijmans R, Elith J. dismo: Species Distribution ModelingR package (Version 1.1–4) <https://CRAN.R-project.org/package=dismo.2016>.
23. Ridgeway G, Ridgeway MG. The gbm package. R Foundation for Statistical Computing, Vienna, Austria. 2004; 5(3).
24. Mills E, Gengnagel T, Wollburg P. Solar-LED alternatives to fuel-based lighting for night fishing. *Energy for Sustainable Development*. 2014; 21:30–41.
25. Kehayias G, Bouliopoulos D, Chiotis N, Koutra P. A photovoltaic-battery-LED lamp raft design for purse seine fishery: Application in a large Mediterranean lake. *Fisheries Research*. 2016; 177:18–23.
26. McHenry M, Doepel D, Onyango B, Opara U. Small-scale portable photovoltaic-battery-LED systems with submersible LED units to replace kerosene-based artisanal fishing lamps for Sub-Saharan African lakes. *Renewable Energy*. 2014; 62:276–84.
27. Shikata T, Yamashita K, Shirata M, Machida Y. Performance evaluation of fishing lamp using oval-shaped blue LEDs for squid jigging fishery in offshore fishing grounds in the Sea of Japan. *Nippon Suisan Gakkaishi*. 2012; 78(6):1104–11 (in Japanese with English abstract).
28. Matsushita Y, Azuno T, Yamashita Y. Fuel reduction in coastal squid jigging boats equipped with various combinations of conventional metal halide lamps and low-energy LED panels. *Fisheries Research*. 2012; 125:14–9.
29. Susanto A, Irnawati R, Mustahal M, Syabana MA. Fishing efficiency of LED lamps for fixed lift net fisheries in Banten Bay Indonesia. *Turkish Journal of Fisheries and Aquatic Sciences*. 2017; 17(2):283–91.
30. Marriott RJ, Wise B, St John J. Historical changes in fishing efficiency in the west coast demersal scale-fish fishery, Western Australia: implications for assessment and management. *ICES Journal of Marine Science*. 2010; 68(1):76–86.
31. Garcia S, Kolding J, Rice J, Rochet M-J, Zhou S, Arimoto T, et al. Reconsidering the consequences of selective fisheries. *Science*. 2012; 335(6072):1045–7. <https://doi.org/10.1126/science.1214594> PMID: 22383833
32. Muška M, Tušar M, Frouzová J, Mrkvička T, Ricard D, Seďa J, et al. Real-time distribution of pelagic fish: combining hydroacoustics, GIS and spatial modelling at a fine spatial scale. *Scientific reports*. 2018; 8(1):5381. <https://doi.org/10.1038/s41598-018-23762-z> PMID: 29599464
33. Phiri H, Shirakihara K. Distribution and seasonal movement of pelagic fish in southern Lake Tanganyika. *Fisheries Research*. 1999; 41(1):63–71.
34. O'Reilly CM, Alin SR, Plisnier P-D, Cohen AS, McKee BA. Climate change decreases aquatic ecosystem productivity of Lake Tanganyika, Africa. *Nature*. 2003; 424:766–8. <https://doi.org/10.1038/nature01833> ISI:000184733900037. PMID: 12917682