


RESEARCH ARTICLE

Open Access



# Heme oxygenase-1 and neopterin plasma/serum levels and their role in diagnosing active and latent TB among HIV/TB co-infected patients: a cross sectional study

Esther Uwimaana<sup>1,2\*</sup> , Bernard S. Bagaya<sup>1</sup>, Barbara Castelnovo<sup>3</sup>, David P. Kateete<sup>1</sup>, Anguzu Godwin<sup>3</sup>, Noah Kiwanuka<sup>4</sup>, Christopher C. Whalen<sup>5</sup> and Moses L. Joloba<sup>1</sup>

## Abstract

**Background:** Tuberculosis (TB) diagnosis in the context of HIV co-infection remains challenging. Heme oxygenase 1 (HO-1) and neopterin have been validated as potential biomarkers for TB diagnosis. Latent TB infection (LTBI) is diagnosed using tuberculin skin test (TST) and interferon gamma release assays (T-Spot and QuantiFERON TB gold tests, respectively). However, these tests have shown challenges and yet diagnosing LTBI is important for the overall control of TB. This study was conducted to determine the levels of HO-1 and neopterin, and their role in the diagnosis of TB among individuals enrolled in the Community Health and Social Network of Tuberculosis (COHSONET) study and the Kampala TB Drug Resistance Survey (KDRS).

**Methods:** This was a nested cross-sectional study. Plasma and serum samples collected from 140 patients at Mulago National Referral Hospital, Kampala Uganda were used. *M.tb* culture was performed on sputum to confirm active TB(ATB) and QuantiFERON TB gold test to confirm latent TB infection (LTBI). ELISAs were performed to determine the levels of HO-1 and neopterin. Data analysis was done using t-test and Receiver Operating Characteristic curves to determine the diagnostic accuracy.

**Results:** HO-1 levels among active tuberculosis (ATB)/HIV-infected patients and LTBI/HIV-infected patients were 10.7 ng/ml (IQR: 7.3–12.7 ng/ml) and 7.5 ng/ml (IQR: 5.4–14.1 ng/ml) respectively. Neopterin levels among ATB/HIV-positive patients and LTBI/HIV-positive patients were 11.7 ng/ml (IQR: 5.24 ng/ml) and 8.8 ng/ml (IQR: 2.4–19.8 ng/ml), respectively. HO-1 showed a sensitivity of 58.57% and a specificity of 67.14% with area under the curve (AUC) of 0.57 when used to discriminate between ATB and LTBI. Neopterin showed an AUC of 0.62 with a sensitivity of 57.14% and a specificity of 60.0% when used to distinguish ATB from LTBI.

\* Correspondence: [uwimaana@gmail.com](mailto:uwimaana@gmail.com)

<sup>1</sup>Department of Immunology & Molecular Biology, School of Biomedical Sciences, Makerere University College of Health Sciences, Kampala, Uganda

<sup>2</sup>Immunology Laboratory, School of Biomedical Sciences, Makerere University, Kampala, Uganda

Full list of author information is available at the end of the article



© The Author(s). 2021 **Open Access** This article is licensed under a Creative Commons Attribution 4.0 International License, which permits use, sharing, adaptation, distribution and reproduction in any medium or format, as long as you give appropriate credit to the original author(s) and the source, provide a link to the Creative Commons licence, and indicate if changes were made. The images or other third party material in this article are included in the article's Creative Commons licence, unless indicated otherwise in a credit line to the material. If material is not included in the article's Creative Commons licence and your intended use is not permitted by statutory regulation or exceeds the permitted use, you will need to obtain permission directly from the copyright holder. To view a copy of this licence, visit <http://creativecommons.org/licenses/by/4.0/>. The Creative Commons Public Domain Dedication waiver (<http://creativecommons.org/publicdomain/zero/1.0/>) applies to the data made available in this article, unless otherwise stated in a credit line to the data.

**Conclusion:** There was no significant difference in HO-1 concentration levels of ATB individuals compared to LTBI individuals. There was a significant difference in neopterin concentrations levels of ATB individuals compared to latently infected individuals. Findings from this study, show that HO-1 and neopterin have poor ability to distinguish between ATB and LTBI.

**Keywords:** Latent tuberculosis infection, Active tuberculosis, Biomarker

## Background

In 2016, more than 2 billion people globally were estimated to be latently infected with *Mycobacterium tuberculosis* (*M. tb*). In 2017, 10 million people fell ill with tuberculosis (TB), and 1.6 million died from the disease (including 0.3 million among people living with HIV). TB is the leading cause of death among HIV positive individuals globally [1]. In Uganda, the prevalence of latent tuberculosis infection (LTBI) was estimated to be 49% among adults [2, 3]. LTBI is diagnosed using the tuberculin skin test (TST) and interferon gamma release assays (T-Spot and QuantiFERON TB gold test). However, these diagnostic tests have shown challenges, for example, TST is associated with false positives or negatives especially among immunocompromised individuals like HIV/TB co-infected individuals with impaired cell-mediated immunity [4].

The QuantiFERON test is technology-intensive, requires expertise and difficult to implement in resource-limited settings. More so, all these tests cannot tell whether one has a current, cleared, progressed to active infection as they are based on infection with *M. tb* and give a positive result for both latently and actively infected patients. Hence the difficulty in distinguishing active tuberculosis (ATB) from LTBI during TB diagnosis [5].

As a result, biomarkers such as *M. tb* thymidylate kinase (TMKmt) antigen [6], Lipoarabinomannan(-LAM) [7], heme oxygenase 1(HO-1 [8] and neopterin [9] have been studied. Studies have shown HO-1 and neopterin to successfully distinguish LTBI from ATB [8, 9]. HO-1 is a key stress response enzyme that is highly expressed in the lung tissue during *M. tb* infection and an anti-oxidant that degrades heme to iron, biliverdin, and carbonmonoxide [10]. Neopterin is a product of guanosine triphosphate and is produced by human macrophages upon stimulation with the Th1 cell-derived cytokine interferon-gamma. Neopterin has been shown to be a marker of immune activation during *M. tb* infection [11].

There is no rapid diagnostic test to accurately distinguish LTBI from ATB. The sensitivity of TST is reduced for persons with impaired cell-mediated immunity as a reaction to tuberculin is impaired in individuals with HIV infection [12] and yet diagnosing LTBI is important for the overall control of TB.

More importantly, offering anti-TB treatment to individuals with LTBI significantly decreases their risk of developing ATB [13]. HIV infection increases the risk of reactivation of LTBI as infection with HIV is the most powerful known risk factor predisposing for *M. tb* infection [14] and progression to active disease, which increases the risk of latent TB reactivation.

A study done in India in 2013 on plasma HO-1 levels to distinguish ATB from LTBI showed that HO-1 plasma levels were elevated in those with ATB compared to individuals with LTBI and the healthy controls [8]. However, HO-1 levels in ATB and LTBI have not been studied in several other settings including sub-Saharan Africa. Another study in India, on serum neopterin levels in HIV infected patients with and without TB showed serum neopterin levels to be highest in HIV positive individuals with ATB and lowest in healthy controls [9]. We hypothesize that HO-1 and neopterin levels are elevated in individuals with *M. tb* infection. Therefore, this study aimed to determine the plasma levels of HO-1 and neopterin and their diagnostic accuracy in diagnosing TB among ATB/HIV-infected patients, and LTBI/HIV-infected patients compared to sputum culture and QuantiFERON TB gold test.

## Methods

### Study design and setting

This was a cross-sectional study conducted at the Immunology laboratory of the Department of Immunology and Molecular Biology, School of Biomedical Sciences, College of Health Sciences, Makerere University Kampala, Uganda. This study aimed to determine the plasma levels of HO-1 and neopterin, and their diagnostic accuracy in diagnosing TB among ATB/HIV-infected patients, and LTBI/HIV-infected patients compared to sputum culture and QuantiFERON TB gold test.

### Participants and samples

Two groups of samples were included: Samples from ATB/HIV-infected patients (pre-qualified by sputum culture and microscopy), LTBI/HIV-infected individuals (pre-qualified by QuantiFERON-TB GOLD test).

Archived samples collected by the Community Health and Social Network of Tuberculosis (COHSONET) and Kampala TB Drug Resistance Survey (KDRS) studies were used in this study. The population size of the

COHSONET and KDRS studies was 2279 and 473 participants, respectively. Consecutive sampling was used when retrieving the samples in this study, where all samples which met the inclusion criteria were enrolled into the study. These samples were stored at  $-80^{\circ}\text{C}$ .

Samples whose volume was inadequate to complete the laboratory tests and samples for patients who did not consent for future use of the samples were excluded (Fig. 1). De-identified data coded with participant identification numbers were extracted from the parent studies' databases.

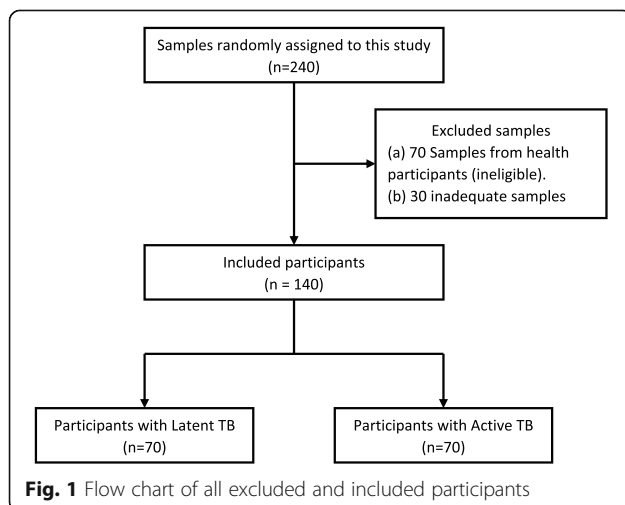
The sample size was calculated using a desired precision (0.06), sensitivity (91.8%) and specificity (94.9%) by Andrade and colleagues in 2013 [8]. The total estimated sample size for this study was 140 participants (70 patients with ATB/HIV-infected patients and 70 individuals with LTBI/HIV-infected).

### Laboratory procedures

HIV testing and laboratory diagnosis of both ATB and LTBI were previously determined by the COHSONET and KDRS studies. Briefly, HIV antibody testing was done in parallel using Abbot Determine (Abbott Laboratories Abbott Park IL, USA) and double-well run Vironostika HIV Uni-form II Ag/Ab (BioMerieux Boxtel, Netherlands). The Generic Biorad HIV-1/ HIV-2 plus O-(Enzyme-Linked Immunosorbent Assay) ELISA kit (Biorad Laboratories, Redmond WA, USA) was used as the tie-breaker. All tests were performed in accordance with the manufacturers' instructions [15].

### LTBI and ATB diagnosis

All samples used were designated as either LTBI or ATB using Quantiferon gold IGRA assay [16] and acid fast bacillus (AFB) smear microscopy/culture, respectively [15].



### Measurement of plasma HO-1 and neopterin

HO-1 and neopterin levels in the samples were determined using the human HO-1 ELISA kits (Xpress Biotech International) and human neopterin ELISA kits (Express Biotech International) respectively after optimizing by running different sample dilutions.

### HO-1 ELISA

Sandwich ELISA was used as the method of choice. The anti-HO-1 antibody was pre-coated onto the plate and the biotin-conjugated anti-HO-1 antibody was used as the detection antibodies. The standards, test samples, and detection antibody were added to wells subsequently and washed with wash buffer. Horseradish Peroxidase (HRP)-streptavidin was added, and unbound conjugates were washed away with wash buffer. 3,3',5,5'-Tetramethylbenzidine (TMB) substrates were added followed by a stop solution. The colour change was determined spectrophotometrically at a wavelength of 450 nm. The concentration of HO-1 in the sample was determined by comparing the optical density (OD) of samples to the standard curves.

To determine the level of HO-1 enzyme in the samples, a sandwich ELISA was done using commercially obtained kits (Express Biotech International Cat No. XPEH3234). HO-1 kits and the samples were removed from the refrigerator and allowed to attain room temperature. The standard solution was serially diluted to obtain different dilutions. The HO-1 ELISA protocol was optimized by first running known samples before running the test samples. The plated wells were washed using 350  $\mu\text{l}$  phosphate-buffered saline (PBS) in each well two times with a soaking time of 1 min and then blotted to dry. 0.1 ml of 20 ng/ml, 10 ng/ml, 5 ng/ml, 2.5 ng/ml, 1.25 ng/ml, 0.625 ng/ml, 0.313 ng/ml standard solutions were aliquoted into the standard wells. 0.1 ml of the sample (in duplicate) was aliquoted into the sample wells. The plate was sealed with a cover and incubated at  $37^{\circ}\text{C}$  for 90 min. The cover was removed, and contents discarded then washed plate two times using wash buffer. 0.1 ml Biotin-detection antibody working solution was added into the above wells and plate incubated at  $37^{\circ}\text{C}$  for 60 min. The cover was removed and washed three times with wash buffer.

Following washing, 0.1 ml of Streptavidin-Biotin Complex (SABC) working solution into each well, covered and incubated at  $37^{\circ}\text{C}$  for 30 min. The plate was washed five times with wash buffer. Then 90  $\mu\text{l}$  of TMB substrate was added into each well, the plate covered and incubated at  $37^{\circ}\text{C}$  in the dark for 20 min. Then 50  $\mu\text{l}$  of stop solution was added into each well and mixed thoroughly and the colour changed from blue to yellow immediately. The plate was read at 450 nm.

### Neopterin ELISA

Competitive ELISA was used as the method. The microtiter plate was pre-coated with neopterin. During the reaction, neopterin in the sample or standard competes with a fixed amount of neopterin on the solid phase supporter for sites on the Biotinylated Detection Antibody specific to neopterin. Excess conjugate and unbound sample or standard were washed from the plate and HRP-Streptavidin was added to each well and incubated. Then TMB substrate was added to each well followed by a stop solution. The color change was determined spectrophotometrically at a wavelength of 450 nm. The concentration of neopterin in the sample was determined by comparing the optical density of samples to the standard curves.

To determine the concentration levels of neopterin in the samples, a competitive ELISA was performed using a commercially prepared neopterin kit (Cat No. XPEH3413). Neopterin kits and the samples were removed from the refrigerator and allowed to attain room temperature. The standard solution was serially diluted and the protocol optimized. The plate was washed two times before adding standard, sample, and controls. Then 50  $\mu$ l of sample and standard solution were added to the wells. Immediately 50  $\mu$ l of Biotin-detection antibody was added to each well and incubated for 45 min at 37 °C. The plate was then washed three times using phosphate buffer. 100  $\mu$ l SABC working solution was added to each well and incubated for 30 min at 37 °C, followed by washing the plate five times. 90  $\mu$ l of TMB substrate was added to each well and incubated for 20 min at 37 °C. Followed by 50  $\mu$ l stop solution was added to the wells. The plate was read at 450 nm.

### Quality assurance and control

Sample locations on the plate were mapped using ELISA worksheets during the assay. All samples and standards were run in duplicates. Blanks were run during all the assays to control for background reading. All reagents were properly thawed before use and raw data was entered and double-checked.

### Data management and analysis

The Optical densities (ODs) generated from the ELISA reader were entered into Microsoft Excel. Data was cleaned by subtracting ODs of the blanks (background) from those of test wells. Standards were used to draw a standard reference curve from which the sample ODs were converted into HO-1 and neopterin concentrations in ng/ml (provided in [supplementary material](#)). Median values with interquartile ranges (IQR) were used as measures of central tendency. HO-1 and neopterin levels were compared among the study groups using the t-test. Receiver Operator Characteristics (ROC) curves were

designed to test the diagnostic accuracy of HO-1 and neopterin. The statistical analysis was done using Graphpad Prism version 8.1.

## Results

### Participant baseline characteristics

A total of 140 archived participants' plasma/serum samples were included in this study. The participants were stratified into two groups; 70(50%) of the participants were ATB/HIV-infected patients and 70 (50%) were LTBI/HIV-infected individuals. Eighty one (57.8%) of the participants were male and the median age of the study participants was 26 years (IQR: 22–34 years). Details of participant demographic characteristics stratified by the study group are summarized in Table 1.

### HO-1 levels in serum/plasma

The median concentration levels of HO-1 among ATB/HIV-infected patients and LTBI/HIV-infected individuals, were 10.7 ng/ml (IQR: 7.3–12.7 ng/ml) and 7.5 ng/ml (IQR: 5.4–14.1 ng/ml) respectively (See Table 1). We compared HO-1 levels among the two study groups and found no significant difference in HO-1 levels among ATBI/HIV-infected patients compared to LTBI/HIV-infected individuals ( $P$ -value = 0.183) (Fig. 2).

### Neopterin levels in serum/plasma

The median concentration levels of neopterin among ATB/HIV-infected patients and LTBI/HIV-infected individuals, were 11.7 ng/ml (IQR: 5.2–19.4 ng/ml) and 8.8 ng/ml (IQR: 2.4–19.8 ng/ml) respectively (See Table 1).

There was a significant difference in the concentration levels of neopterin among ATBI/HIV-infected patients compared to LTBI/HIV-infected individuals ( $P$ -value = 0.015) (Fig. 3).

### Diagnostic accuracy of HO-1

To explore the possibility of using HO-1 as a possible diagnostic biomarker for ATB and LTBI, receiver operating characteristics (ROC) curves were used to assess the diagnostic accuracy of HO-1 in the diagnosis of TB. In testing HO-1 as a marker of ATB and Latent TB, HO-1 showed an AUC of 0.57 (95% CI, 0.4664–0.6645) (Fig. 4). A highest diagnostic accuracy for HO-1 was obtained by using a cut off value of > 8.95 ng/ml, with a sensitivity of 58.57% (95% CI, 46.88–69.37%) and a specificity of 67.14% (95% CI, 55.50 to 77.00%).

Negative predictive (NPV) and Positive Predictive Values (PPV) were also computed from the above sensitivity and specificity at a prevalence of TB of 50% (70/140). NPV was 63.6% and PPV was 62.2%.

**Table 1** Patient baseline characteristics stratified by TB status

Characteristic	Active TB/HIV N (%)	Latent TB/HIV N (%)	P-Value	Total
Disease state	70 (50%)	70 (50%)		140
Sex			0.549	
Female	27 (38.57%)	32 (45.71%)		59 (42.2%)
Male	43 (61.43%)	38 (54.29)		81 (57.8%)
Age in years Median (IQR)	28 (24-36)	24 (21-30)	0.0029	26 (22-34)
HConc Median (IQR) ng/ml	10.7 (7.41-12.7)	7.24 (5.12-14.1)	0.0001	10.69 (7.3-12.7)
NConc Median (IQR) ng/ml	11.7 (5.2-19.4)	8.8 (2.4-19.8)	0.0002	10.12 (2.7-19.3)
AFB smear grade status				
1+	17			
2+	29			
3+	15			
4+	9			

IQR Interquartile range; Hconc median, median concentration levels of heme oxygenase 1; NConc median, median concentration levels of neopterin

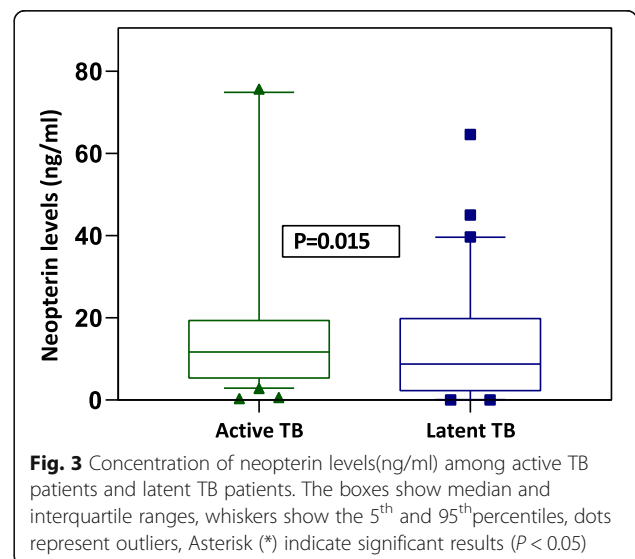
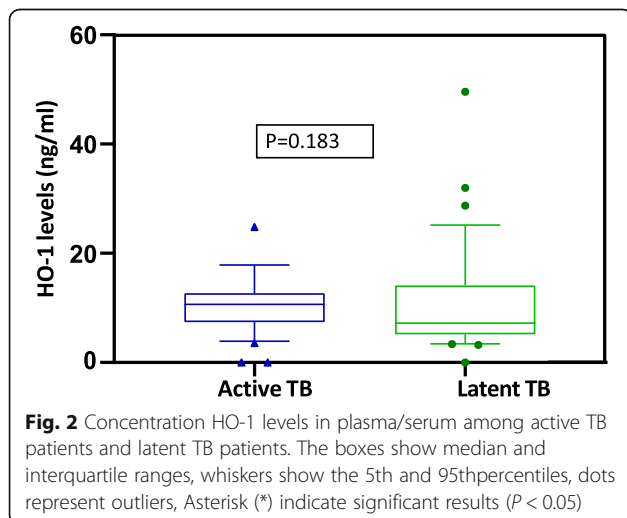
**Diagnostic accuracy of neopterin**

In exploring neopterin as a marker for ATB and LTB diagnosis, neopterin showed an AUC of 0.62 (95% CI, 0.5236–0.7135) and a diagnostic accuracy obtained using a cut-off > 10.12 ng/ml with a sensitivity of 57.14% (95% CI, 45.48 to 68.06%) and a specificity of 60.0% (95% CI, 48.29 to 70.67%). NPV and PPV were also computed from the above sensitivity and specificity at a prevalence of TB of 50% (70/140). NPV was 57% and PPV was 56.2% (Fig. 5).

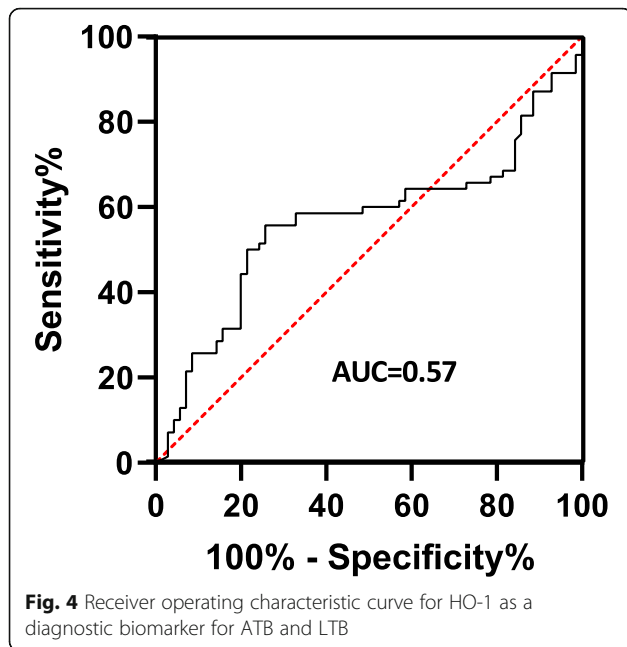
**Discussion**

In this study, HO-1 and neopterin concentration levels could not differentiate between individuals with ATB and latently infected individuals. Although we found a

significant difference in the median serum/plasma concentration levels of neopterin (Fig. 3) between the two study groups, there was no significant difference in concentration levels of HO-1 (Fig. 2). While the current diagnostic methods cannot distinguish between ATB and LTB, previous studies have shown several biomarkers to discriminate ATB from LTB such as LAM [17], *M.tb* TMK antigen [6], neopterin, and C-reactive protein [18]. However, no study had been carried out to test the diagnostic potential of HO-1 and neopterin in a sub-Saharan population. Neopterin is synthesized by macrophages upon stimulation with cytokine interferon-gamma, and several studies have shown its

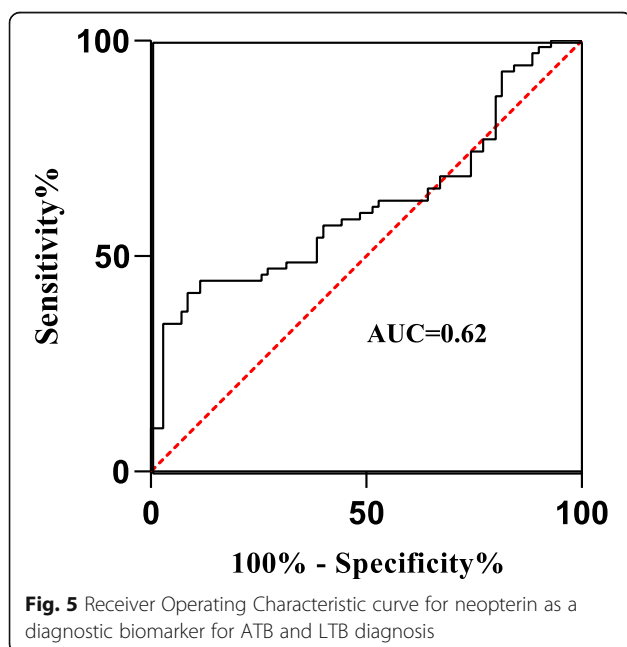






concentrations to correlate with the extent and activity of disease, whereas HO-1 is an intracellular enzyme expressed in many cell types and tissues that is induced during cellular stress.

The findings of this study differ from those of a study by Michael Eyeshot et al., (2016) which revealed that urine neopterin levels were significantly higher in ATB patients than in latently infected persons [18]. Another study on plasma HO-1 levels distinguished latently or successfully treated TB from active disease also showed



that HO-1 levels were highest among patients with ATB compared to patients with LTBI and healthy controls [8]. These findings also differ from those obtained in this study as there was no significant difference in the concentration levels of HO-1.

Receiver operator characterization of HO-1 was done as a potential biomarker for ATB and LTBI diagnosis. HO-1 failed to distinguish between individuals with active disease and those who were latently infected (Fig. 4).

A study carried out in Southern India demonstrated that HO-1 had the highest discriminatory power with a 23.5% higher specificity in distinguishing ATB from LTBI compared to SAA (94.9% vs. 71.4%, respectively) and 48.8% higher specificity compared to CRP (94.9% vs. 46.1%, respectively) [8]. The difference in the diagnostic accuracy compared to our study could be attributed to the sample size difference in different study groups whereby the number of ATB individuals was much more than the latently infected group and the healthy donors. Receiver operator characterization of neopterin demonstrated neopterin to be a fair biomarker for ATB and LTBI diagnosis (Fig. 5). Generally, Both HO-1 and neopterin could not discriminate ATB from LTBI. Although other studies have showed these markers to be potential biomarkers that could be employed in TB diagnosis, our study did not find them useful in TB diagnosis as they failed to distinguish between ATB and LTBI.

Limitation: HO-1 and neopterin expression are known to increase in patients with other pathologies, including other non-tuberculosis infections therefore, such a test may require to be optimized by combination with a secondary assay to provide an accurate diagnosis of *M. tb* infection.

## Conclusions

In summary, the findings show that HO-1 and neopterin have poor ability to distinguish between ATB and LTBI in this population which differs from results from studies done in Asian populations. To better understand role of these biomarkers, these markers need to be further investigated and validated in other populations.

## Abbreviations

ATP: Adenosine Triphosphate; AIDS: Acquired Immune Deficiency Syndrome; ATB: Active Tuberculosis; CI: Confidence Intervals; COHSONET: Community Health and Social Network of Tuberculosis; ELISA: Enzyme-Linked Immunosorbent Assay; Fig: Figure; Hconc: Concentration of Heme oxygenase 1; HIV: Human Immunodeficiency Virus; HO-1: Heme oxygenase 1; HRP: Horseradish Peroxidase; IGRA: Interferon-Gamma Release Assay; KDRS: Kampala Drug Resistance Survey; LTBI: Latent tuberculosis; LTBI: Latent Tuberculosis Infection; *M.tb*: *Mycobacterium tuberculosis*; Nconc: concentration of neopterin; ODs: Optical Densities; SABCD: Streptavidin-Biotin Complex; TB: Tuberculosis; TMB: 3,3',5,5'-Tetramethylbenzidine; TST: Tuberculin Skin Test; WHO: World Health Organization

## Supplementary Information

The online version contains supplementary material available at <https://doi.org/10.1186/s12879-021-06370-7>.

**Additional file 1: Supplementary material.** Standards were used to draw a standard reference curve from which the sample ODs were converted into HO-1 and neopterin concentrations in ng/ml.

### Acknowledgments

I would like to acknowledge the Infectious Disease Institute Makerere University and MakCHS–UC–Berkeley–Yale Pulmonary Complications of AIDS Research Training (PART) Program, NIH D43TW009607, from the Fogarty International Center for the technical support and mentorship during my period of study.

### Authors' contributions

All authors have read and approved the manuscript. There are 8 authors to this manuscript: EU, BSB, BC, AG, DPK, NK, CCW, and MLJ. EU conceived the concept behind this work. BC, CCW, MLJ and NK supplied materials and reagents. EU, BSB, BC, DPK, and AG did the experiments and analysed the data. EU, BSB, BC, and DPK wrote the final draft of the manuscript.

### Funding

No external funding was received as direct support for this project. EU's MSc, program was supported by EDCTP Reg Net. 2015–1104 TB Node Infectious Diseases Institute–Makerere University, MAPRONANO ACE Uganda, and the International Research on TB and other Pulmonary complications of AIDS NIH–Fogarty award Number D43–TW009607–01 'Pulmonary complications of AIDS research training (PART)' program. The content of this manuscript is solely the responsibility of the author(s) and does not necessarily represent the official views of the supporting offices. The authors would like to thank Investigators for the COHSONET study (Grant Number R01AI093856) and the KDRS study (grant SANTE/2006/105–316 through CPCD Uganda and the INTERACT program) as they provided samples used in this study.

### Availability of data and materials

The data that support the findings of this study are available from the parent studies, but restrictions apply to the availability of these data, which were used under license for the current study, and so are not publicly available. Data are however available from the authors upon reasonable request and with permission of parent studies.

### Declarations

#### Ethics approval and consent to participate

Ethical approval was obtained from the Makerere University School of Biomedical Sciences Ethics Committee (SBS-606) and Uganda National Council for Science and Technology (HS301ES).

Waiver of consent for this analysis was obtained from the Makerere University School of Biomedical Sciences Ethics Committee. Participants provided written informed consent including consent for storage and future use of samples at enrolment in the parent studies. Participant information obtained from the parent studies was coded and identification numbers were used for purposes of confidentiality and privacy.

#### Consent for publication

Not applicable.

#### Competing interests

Co-author David P Kateete is Associate Editor of the journal. The other authors have declared that no competing interests exist.

#### Author details

<sup>1</sup>Department of Immunology & Molecular Biology, School of Biomedical Sciences, Makerere University College of Health Sciences, Kampala, Uganda.

<sup>2</sup>Immunology Laboratory, School of Biomedical Sciences, Makerere University, Kampala, Uganda. <sup>3</sup>Infectious Diseases Institute, Makerere University College of Health Sciences, Kampala, Uganda. <sup>4</sup>School of Public Health, Makerere University College of Health Sciences, Kampala, Uganda.

<sup>5</sup>Epidemiology & Biostatistics, Global Health Institute, University of Georgia Athens, Athens, USA.

Received: 11 September 2019 Accepted: 28 June 2021

Published online: 27 July 2021

### References

- Schmit KM, Wansaula Z, Pratt R, Price SF, Langer AJ. Tuberculosis—United States, 2016. *MMWR Morb Mortal Wkly Rep*. 2017;66(11):289–94. <https://doi.org/10.15585/mmwr.mm6611a2>.
- Kizza FN, List J, Nkwata AK, Okwera A, Ezeamama AE, Whalen CC, et al. Prevalence of latent tuberculosis infection and associated risk factors in an urban African setting. *BMC Infect Dis*. 2015;15(1):165. <https://doi.org/10.1186/s12879-015-0904-1>.
- WHO. Tuberculosis. 2017.
- Sauzullo I, Vullo V, Mastroianni CM. Detecting latent tuberculosis in compromised patients. *Curr Opin Infect Dis*. 2015;28(3):275–82. <https://doi.org/10.1097/QCO.0000000000000158>.
- Santin M, Munoz L, Rigau D. Interferon- $\gamma$  release assays for the diagnosis of tuberculosis and tuberculosis infection in HIV-infected adults: a systematic review and meta-analysis. *PLoS One*. 2012;7(3):e32482. <https://doi.org/10.1371/journal.pone.0032482>.
- Wayengera M, Mwebaza I, Welishe J, Nakimuli C, Kateete DP, Wampande E, et al. Sero-diagnosis of active *Mycobacterium tuberculosis* disease among HIV co-infected persons using thymidylate kinase based antigen and antibody capture enzyme immuno-assays. *Mycobact Dis*. 2017;7(2):241.
- Lawn SD. Point-of-care detection of lipoarabinomannan (LAM) in urine for diagnosis of HIV-associated tuberculosis: a state of the art review. *BMC Infect Dis*. 2012;12(1):103. <https://doi.org/10.1186/1471-2334-12-103>.
- Andrade BB, Kumar NP, Mayer-Barber KD, Barber DL, Sridhar R, Rekha WB, et al. Plasma heme oxygenase-1 levels distinguish latent or successfully treated human tuberculosis from active disease. *PLoS One*. 2013;8(5):62618.
- Immanuel C, Victor L, Silambu Chelvi K, Padmapriyadarshini C, Rehman F, Illiyas S, et al. Serum neopterin levels in HIV infected patients with & without tuberculosis. *Indian J Med Res*. 2005;121:220–5.
- Abraham NG, Kappas A. Pharmacological and clinical aspects of heme oxygenase. *Pharmacol Rev*. 2008;60(1):79–127. <https://doi.org/10.1124/pr.107.07104>.
- Murr C, Widner B, Wirleitner B, Fuchs D. Neopterin as a marker for immune system activation. *Curr Drug Metab*. 2002;3(2):175–87. <https://doi.org/10.2174/1389200024605082>.
- Rangaka MX, Wilkinson KA, Seldon R, Van Cutsem G, Meintjes GA, Morroni C, et al. Effect of HIV-1 infection on T-cell-based and skin test detection of tuberculosis infection. *Am J Respir Crit Care Med*. 2007;175(5):514–20. <https://doi.org/10.1164/rccm.200610-1439OC>.
- Adeiza MA. Diagnosis of latent tuberculosis infection: the tuberculin skin test and interferon gamma release assays. *Ann Nigerian Med*. 2011;5(2):35. <https://doi.org/10.4103/0331-3131.92946>.
- Horsburgh CR Jr. Priorities for the treatment of latent tuberculosis infection in the United States. *N Engl J Med*. 2004;350(20):2060–7. <https://doi.org/10.1056/NEJMs031667>.
- Lukoye D, Cobelens FG, Ezati N, Kirimunda S, Adatu FE, Lule JK, et al. Rates of anti-tuberculosis drug resistance in Kampala–Uganda are low and not associated with HIV infection. *PLoS one*. 2011;6(1):e16130.
- Mazurek GH, Jereb J, LoBue P, Iademarco MF, Vernon A. Guidelines for using the QuantiFERON®-TB G test for detecting *Mycobacterium tuberculosis* infection, United States. *MMWR*. 2005;15:49–55.
- Lawn SD, Kerkhoff AD, Burton R, Schutz C, Boule A, Vogt M, et al. Diagnostic accuracy, incremental yield and prognostic value of determine TB–LAM for routine diagnostic testing for tuberculosis in HIV-infected patients requiring acute hospital admission in South Africa: a prospective cohort. *BMC Med*. 2017;15(1):67. <https://doi.org/10.1186/s12916-017-0822-8>.
- Eisenhut M, Hargreaves DS, Scott A, Housley D, Walters A, Mulla R. Determination of urinary Neopterin/creatinine ratio to distinguish active tuberculosis from latent *Mycobacterium tuberculosis* infection. *J Biomarkers*. 2016;2016:1–6. <https://doi.org/10.1155/2016/5643853>.

### Publisher's Note

Springer Nature remains neutral with regard to jurisdictional claims in published maps and institutional affiliations.