

Review

Open Access

Postprandial hyperglycemia as an etiological factor in vascular failure

Koichi Node and Teruo Inoue*

Address: Department of Cardiovascular and Renal Medicine, Saga University Faculty of Medicine, Saga, Japan

Email: Koichi Node - node@cc.saga-u.ac.jp; Teruo Inoue* - inouete@med.saga-u.ac.jp

* Corresponding author

Published: 29 April 2009

Received: 14 January 2009

Cardiovascular Diabetology 2009, **8**:23 doi:10.1186/1475-2840-8-23

Accepted: 29 April 2009

This article is available from: <http://www.cardiab.com/content/8/1/23>

© 2009 Node and Inoue; licensee BioMed Central Ltd.

This is an Open Access article distributed under the terms of the Creative Commons Attribution License (<http://creativecommons.org/licenses/by/2.0>), which permits unrestricted use, distribution, and reproduction in any medium, provided the original work is properly cited.

Abstract

Postprandial hyperglycemia is characterized by hyperglycemic spikes that induce endothelial dysfunction, inflammatory reactions and oxidative stress, which may lead to progression of atherosclerosis and occurrence of cardiovascular events. Emerging data indicate that postprandial hyperglycemia or even impaired glucose tolerance may predispose to progression of atherosclerosis and cardiovascular events. There is evidence that postprandial hyperglycemia, but not fasting hyperglycemia, independently predicts the occurrence of cardiovascular events. We proposed a concept of 'vascular failure' as a comprehensive syndrome of vascular dysfunction extending from risk factors to advanced atherosclerotic disease. Postprandial hyperglycemia is therefore one of the very important pathophysiological states contributing to vascular failure. Accordingly, controlling postprandial hyperglycemia should be the focus of future clinical investigation as a potential target for preventing vascular failure.

Introduction

Type 2 diabetes is associated with a markedly increased risk for atherosclerotic coronary arteries and cerebrovascular diseases [1,2]. In addition, there is evidence that abnormalities during the postprandial state, specifically postprandial hyperglycemia, are independent risk factors for atherosclerosis [3]. Recent epidemiological studies suggest postprandial hyperglycemia is an independent risk factor for cardiovascular disease that has effects greater than that of fasting hyperglycemia [4-6].

Atherosclerosis is a progressive disease characterized by the response of the vessel wall to chronic, multifactorial injury, which leads ultimately to the formation of atheromatous or fibrous plaques. Endothelial dysfunction is thought to be the initial stage of atherosclerosis. In addition to endothelial dysfunction, smooth muscle cell dys-

function metabolic abnormalities of the vessel wall including inflammation, oxidative stress and breakdown of neurohormonal balance occur in the early stage of the atherosclerosis process. We recently proposed a new concept termed 'vascular failure' that represents an integration of these vascular abnormalities [7]. Although Schwartz et al. formerly used the term 'vascular failure' as the failure of vascular remodeling response [8], our 'vascular failure' is distinguished from theirs and is defined as a comprehensive syndrome of vascular dysfunction extending from risk factors to advanced atherosclerotic disease with arterial stenosis, and finally to calcification of the vessel wall or serious vascular events caused by plaque rupture or thromboembolic occlusion (Fig. 1),

The pathophysiology of postprandial hyperglycemia is characterized by hyperglycemic spikes that induce oxida-

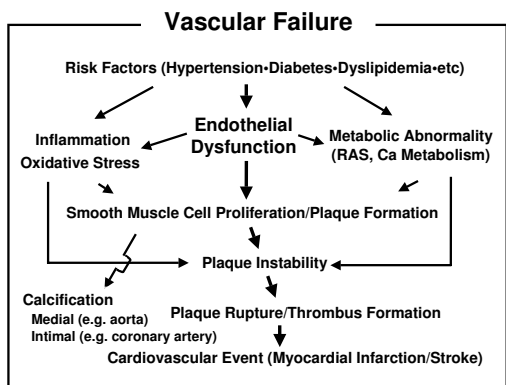


Figure 1
Vascular failure. Vascular failure represents a comprehensive syndrome of vascular dysfunction that extends from risk factors to advanced atherosclerotic disease with arterial stenosis, leading ultimately to calcification of the vessel wall and serious vascular events caused by plaque rupture and thromboembolic occlusion. Calcification includes medial calcification, e.g., in aortic wall as result of diabetes and intimal calcification, e.g., in coronary artery.

tive stress [9], which in combination with soluble advanced glycation end products (AGEs) and lipid peroxidation products, act as key activators of upstream kinases, leading to endothelial dysfunction and expression of inflammatory genes [10] (Fig. 2). This article is an overview of the role of postprandial hyperglycemia, as a major fundamental disturbance, in the pathogenesis of vascular failure.

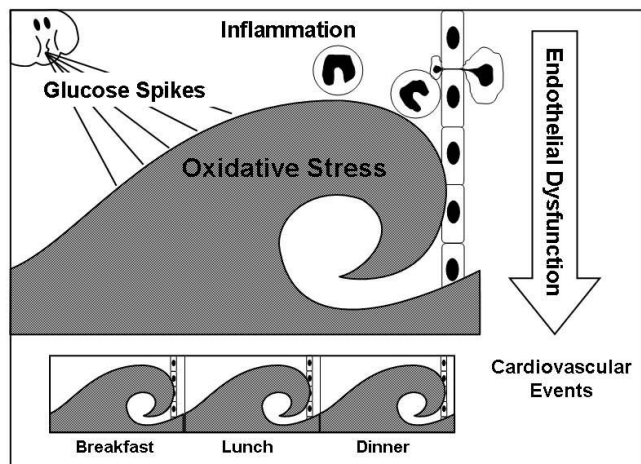


Figure 2
Pathophysiology of postprandial hyperglycemia. Hyperglycemic spikes following every meal induce oxidative stress, endothelial dysfunction and inflammatory reactions.

Recent evidence suggests that almost 2 of 3 patients with symptomatic cardiovascular disease have abnormal glucose homeostasis [11]. A significant number of these patients are not detected by increased fasting glucose levels, but rather by the presence of elevated glucose levels following a meal or during an oral glucose tolerance test [12]. Glucose intolerance is generally established by a 75 g glucose load test, with impaired glucose tolerance, or prediabetes, defined as a 2-hour postload glucose level of 140 to 200 mg/dl and overt type 2 diabetes as a postload glucose level >200 mg/dl. Postprandial hyperglycemia often occurs, even in the setting of good diabetic control assessed by hemoglobin A1c (HbA1c) and fasting glucose levels [13]. Population studies have shown that a fasting glucose level as low as 90 mg/dl may be associated with a 2-hour postprandial glucose level >200 mg/dl [14,15]. In the early stages of type 2 diabetes, even when fasting glucose and HbA1c are within normal ranges, postprandial hyperglycemia causes macrovascular complications such as myocardial infarction or stroke as well as microvascular complications [12,14,16,17]. Emerging data indicate that even impaired glucose tolerance may predispose to progression of atherosclerosis and cardiovascular events [12]. There is evidence that postprandial hyperglycemia, but not fasting hyperglycemia, independently predicts the occurrence of cardiovascular events [16]. For example, the Funagata Diabetes Study showed consistently that 1- or 2-hour postload glucose levels were better predictors of cardiovascular risk than either fasting glucose or HbA1c levels [14], while the Diabetic Epidemiology: Collaborative Analysis of Diagnosis Criteria in Europe (DECODE) study demonstrated a continuous graded and direct relationship between 2-hour postload glucose levels and risk for cardiovascular death [18]. Even in patients classified as having normal glucose tolerance with a postload glucose <140 mg/dl, the level of postload glycemia correlates with the risk of cardiovascular death and all-cause mortality [19]. The risk for postload glycemia begins to increase at levels >80 mg/dl and by 140 mg/dl, the point at which patients are traditionally classified as having impaired glucose tolerance (IGT) or prediabetes, cardiovascular risk is already increased by 58%.

It is now well recognized that endothelial dysfunction is the initial stage in the development of atherosclerosis [20]. Endothelial dysfunction is characterized by a reduction in the production and bioavailability of endothelium-derived relaxing factors, in particular, nitric oxide (NO), generated from L-arginine by endothelial NO synthase (eNOS). A reduction in NO bioavailability leads to impaired endothelium-dependent vasodilation, the functional manifestation of endothelial dysfunction [21]. On the other hand, it also comprises a specific state of "endothelial activation", characterized by a proinflammatory, proliferative and procoagulation milieu that

enhances all the various stages of atherogenesis [22]. Given this relationship between endothelial dysfunction and atherosclerosis, it is likely that the status of endothelial function may reflect the propensity of an individual to develop atherosclerotic disease. The presence of endothelial dysfunction therefore serves as an early marker of vascular failure.

Endothelial function is impaired not only in patients with diabetes but also in patients with IGT. We observed flow-mediated vasodilation (FMD) was reduced in patients with IGT, compared to subjects with normal glucose tolerance (Fig. 3). An acute increase in glycemia affects endothelial function, with both *in vitro* and *in vivo* studies confirming this direct role of hyperglycemia. The presence of high glucose concentrations *in vitro* reduces acetylcholine-induced endothelium-dependent vasodilation in a concentration-dependent manner, with the effect being obtained simply by exposing the preparations to high glucose levels [23]. *In vivo* studies have also demonstrated that hyperglycemic spikes induce endothelial dysfunction [24,25]. Williams et al. [26], using FMD, showed that acute hyperglycemia induced in healthy subjects by intra-arterial infusion of 50% dextrose resulted in impaired endothelium-dependent vasodilation. This finding indicates that elevated glucose levels are a major cause of endothelial dysfunction associated with diabetes mellitus. Shige et al. [27] also demonstrated FMD was attenuated after the intake of fat- and sucrose-rich meals in patients with type 2 diabetes. They showed both the level and change in postprandial FMD correlated significantly with postprandial changes in blood glucose levels, thereby establishing postprandial hyperglycemia as a determinant of reduced flow-mediated vasodilation.

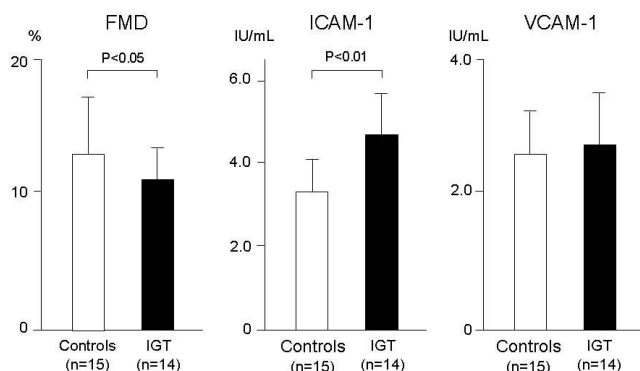


Figure 3
Markers of endothelial function and inflammation in patients with impaired glucose tolerance and subjects with normal glucose tolerance (control). Compared to control subjects, patients with IGT have reduced flow mediated vasodilation and higher circulating levels of ICAM-1, but not VCAM-1.

These effects of hyperglycemia are probably linked with reduced production and/or bioavailability of NO, as hyperglycemia-induced endothelial dysfunction is counterbalanced by increased production of arginine [28]. The inter-relationship between NO production and bioavailability has to be fully understood, because it is not yet clear whether hyperglycemia reduces production of NO, or more probably, increases NO production in association with significant increases in the levels of its inhibitor, the superoxide anion, resulting in a reduction in NO bioavailability [29]. Furthermore, a rapid decrease in FMD has been demonstrated in patients with IGT during an OGTT that correlated with the degree of glycemia measured at 2 hours [25].

Recent data suggest that AGEs also have a role in the development of endothelial dysfunction [30]. AGEs are a heterogeneous group of moieties, one of the most representative being carboxymethyllysine (CML). Diet is a major source of exogenous AGEs, with food AGE content being highly dependent on food nutrient composition, as well as the method, temperature and duration of cooking [31]. Approximately 10% of ingested AGEs are absorbed rapidly and partly retained in the body, where they exert a variety of pathological effects [32] including binding and activation of AGE receptors [33]. AGE precursors such as methylglyoxal (MG) also activate AGE receptors, with an *in vivo* study demonstrating endogenous MG synthesis increased in parallel with hyperglycemia [34]. In the postprandial period, absorbed and endogenously generated AGEs and MG act synergistically to decrease vascular function by directly scavenging NO and increasing oxidative stress.

Inflammation in postprandial hyperglycemia

It is well established that inflammation is a major factor in the pathogenesis of vascular failure. Inflammation in diabetes has long been assessed and considered by the measurement of various inflammatory markers such as high-sensitivity C reactive protein (hsCRP). Various inflammatory cells and mediators play an essential role in the inflammatory process, with initiation and progression of atherosclerosis being characterized by recruitment of leukocytes such as monocytes and T-lymphocytes to the endothelium of the artery wall. Adhesion molecules regulate this interaction between the endothelium and leukocytes [35]. Of the various adhesion molecules, intracellular adhesion molecule (ICAM)-1 and vascular cell adhesion molecule (VCAM)-1 have attracted particular interest. An increase in the circulating forms of these molecules has been demonstrated in subjects with vascular disease [36] and also in subjects with diabetes, with or without vascular disease [37,38]. We observed that circulating levels of ICAM-1, but not VCAM-1, were higher even in patients with IGT, compared to healthy subjects

(Fig. 3). In addition, it has been demonstrated that acute hyperglycemia in both normal and diabetic subjects is a sufficient stimulus to increase circulating levels of ICAM-1, thereby activating one of the first stages of the atherogenic process [39,40]. The concept of atherosclerosis as an inflammatory disease, even in diabetes, is now well established [41], with evidence that acute hyperglycemia during either a hyperglycemic clamp [42] or the postprandial state [43] increases production of plasma interleukin-6, tumor necrosis factor- α and interleukin-18.

Although previous research has focused on monocytes and T-lymphocytes as the predominant types of inflammatory cells involved in atherosclerosis [44,45], there is growing evidence that neutrophil activation is also a major participant in the inflammatory process of ischemic cardiovascular disease, particularly during the acute inflammatory response. In addition, of the various types of leukocytes, the neutrophil count was shown to be the best predictor of future cardiovascular events in a large patient cohort with a high risk of coronary artery and cerebrovascular diseases [45]. Peripheral neutrophils are the most important productive source of reactive oxygen specimens. Activated neutrophils contribute markedly to oxidative stress and inflammation in type 2 diabetes, which subsequently evolves causing angiopathy and atherosclerosis [46]. An adhesion molecule, β 2-integrin Mac-1 (CD11b/CD18), is essential for firm adhesion of both neutrophils and monocytes to vascular endothelial cells. Mac-1 binds to endothelial surface ICAM-1 [47] and also to platelets by binding to either fibrinogen or several platelet receptors such as glycoprotein (GP) Iba [48] and ICAM-2 [49]. Clinical studies have shown that Mac-1 is activated and upregulated on the surface of neutrophils localized in injured vessels following coronary angioplasty [50]. Upregulation of Mac-1 on the surface of neutrophils has also been observed in patients with type 2 diabetes [51]. In addition, it has been reported that agonist-induced ex-vivo upregulation of Mac-1 on the surface of neutrophils is enhanced in patients with diabetes [52]. We have previously observed expression of Mac-1 on the surface of isolated neutrophils using flowcytometric analysis before and 120 min after an oral 75 g glucose load in patients who had not been diagnosed with diabetes mellitus and whose fasting plasma glucose level was <126 mg/dl. Our results showed that compared to baseline values, Mac-1 was upregulated even on unstimulated neutrophils 120 min after the glucose load in patients with postprandial hyperglycemia, defined as a glucose level of ≥ 200 mg/dl at 120 min. In addition, upregulation of fMLP-induced Mac-1 was enhanced significantly at 120 min compared to baseline, not only in patients with postprandial hyperglycemia, but also in patients with IGT defined as a glucose level at 120 min ≥ 140 mg/dl. However, these changes were not evident in patients with nor-

mal glucose tolerance defined as a glucose level <140 mg/dl at 120 min (Fig. 3). These results suggest that acute increases in plasma glucose may alter neutrophil function from inactivated to potentially activated forms in patients with postprandial hyperglycemia and impaired glucose tolerance.

Contribution of postprandial hyperglycemia to oxidative stress

Oxidative stress defined as dysregulation of the cellular redox state, plays a pivotal role in the pathogenesis of vascular failure, especially vascular endothelial dysfunction [53]. The superoxide anion is formed by univalent reduction of molecular oxygen. Although several enzymes are involved in the generation of superoxide anions, including xanthine oxidase, NADH/NADPH oxidase, lipoxygenase and NOS, mitochondria are the major source of superoxide anion production *in vivo* [54]. Superoxide anions are reduced to hydrogen peroxide either spontaneously or by enzymatic catalyzed dismutation. Transition metal-catalyzed interactions between iron or copper and hydrogen peroxide produce highly toxic hydroxyl radicals. Recent studies demonstrate that hyperglycemia induces an overproduction of superoxide anions by the mitochondrial electron-transport chain [55]. Superoxide overproduction is accompanied by increased NO production, caused by an uncoupled state between eNOS and inducible NOS (iNOS), a phenomenon that favors the formation of the strong oxidant, peroxynitrite, which in turn damages DNA. DNA damage is an obligatory stimulus for activation of the nuclear enzyme poly(ADP-ribose) polymerase. Poly(ADP-ribose) polymerase activation, in turn, depletes the intracellular concentration of its substrate NAD⁺, resulting in a decreased rate of glycolysis, electron transport and adenosine triphosphate formation, leading to adenosine diphosphate-ribosylation of reduced glyceraldehyde-phosphate dehydrogenase [56]. These processes result in acute endothelial dysfunction in diabetic blood vessels that contributes overtly to the development of cardiovascular disease. There is both indirect and direct evidence to support the concept that acute hyperglycemia promotes the development of cardiovascular disease in subjects with IGT through the production of oxidative stress. The direct evidence is based on the effects of postprandial hyperglycemia on oxidative stress markers such as nitrotyrosine and 8-iso-prostaglandin F_{2 α} (8-iso-PGF_{2 α}).

Oxygen free radicals react with nitric oxide to form peroxynitrite, a powerful oxidant that may directly oxidize proteins, lipids, and DNA through a nitronium-like intermediate, resulting in formation of carbonyls from side-chain and peptide-bond cleavage [57]. Peroxynitrite has an affinity for tyrosine residues, with this reaction producing nitrotyrosine [58]. Evidence from several studies

supports a direct role of hyperglycemia promoting over-generation of nitrotyrosine. For example, nitrotyrosine formation has been detected in the artery walls of monkeys during hyperglycemia [59], in the plasma of healthy subjects during hyperglycemic clamps [60] or OGTTs [61] and also in patients with diabetes mellitus during an increase in postprandial hyperglycemia, with nitrotyrosine production being dependent on the level of glycemia [62]. Hyperglycemia was also observed to be accompanied by nitrotyrosine deposition in perfused working hearts of rats, that appeared to be related to unbalanced production of NO and superoxide anion caused by over-expression of iNOS [63]. Nitrotyrosine formation has been shown to be followed by the development of endothelial dysfunction in both healthy subjects [60] and in the coronary arteries of perfused hearts [63]. This effect is not surprising, as nitrotyrosine has been shown to be directly harmful to endothelial cells [64].

Determination of specific isoprostane isomers such as 8-iso-PGF_{2α} in urine have been proposed as markers of oxidative stress. Isoprostane is formed collectively from free radical-mediated oxidation of arachidonic acid [65]. As this fatty acid is distributed ubiquitously in cell membranes, measurement of urinary isoprostanes most likely provides an excellent reflection of oxidative stress in the whole body. Several studies have demonstrated hyperglycemia is associated with increased rate of formation and urinary excretion rate of 8-iso-PGF_{2α} [66]. The urinary excretion rate of 8-iso-PGF_{2α} has been reported to be increased significantly in patients with type 2 diabetes patients compared with age-matched healthy subjects. Furthermore, a significant correlation was observed between blood glucose and urinary 8-iso-PGF_{2α}, suggesting that an increase in oxidative stress may be related, at least in part, to determinants of diabetic control. Such results are consistent with *in vitro* findings of enhanced formation and release of 8-iso-PGF_{2α} by porcine vascular smooth muscle cells cultured under hyperglycemic conditions [67]. In a recent study, Monnier et al. [68] demonstrated a strong positive correlation between the urinary excretion rate of 8-iso-PGF_{2α} and glycemic variability assessed by the mean amplitude of glycemic excursions (MAGE). A statistically significant correlation was also observed with the mean postprandial glucose increment, although this relationship was not as strong. These findings indicate that the triggering effect of acute glycemic excursions on oxidative stress should be integrated into glycemic disorders as they are much broader than acute postprandial spikes. As a consequence, the concept that postprandial hyperglycemic spikes are "dangerous waves" should be extended to both upward (postprandial) and downward (interprandial) acute fluctuations of glucose levels around a mean value.

Therapeutic Paradigm

A number of clinical trials have demonstrated that specific pharmacological approaches can reduce the impact of postprandial glycemic excursions on overall glycemic control [69-71]. However, to date, there have been no prospective clinical trials evaluating the impact of improved postprandial hyperglycemia on long-term outcomes in patients with diabetes. Given recent data on the impact of postprandial glycemia on overall glucose control [72], it is likely that therapeutic approaches that focus on this aspect of overall glycemia will benefit patients in the long term. Traditional diabetic agents such as insulin and sulfonylureas predominantly lower fasting glucose and are less effective at reducing postprandial hyperglycemia. Although sulfonylureas target insulin secretion directly through the beta cell potassium channel, they may also have an impact on fasting and postprandial glycemia. However, the pharmacokinetics of the majority of these agents are not tailored toward acute insulin release, and therefore they do not correct abnormalities in early-phase insulin secretion [73]. On the other hand, the pharmacokinetics and mechanisms of action of several agents are directed specifically at postprandial hyperglycemia. Such agents include the meglitinide class of drugs, α -glucosidase inhibitors and thiazolidinediones.

The meglitinide analogues include repaglinide, nateglinide and mitiglinide, which are modern nonsulfonylurea secretagogues that restore the first-phase insulin response. A single dose of nateglinide has been shown to reduce postprandial endothelial dysfunction by lowering postload glycemia in patients with type 2 diabetes [74]. In a randomized trial of diabetic patients, repaglinide reduced postprandial glucose levels to a greater degree than the sulfonylurea, glyburide, whereas glyburide was more effective for lowering fasting glucose levels. Despite identical reductions in HbA1c levels in the 2 groups, repaglinide caused regression of carotid intima-media thickness in 52% of patients, compared with only 18% of patients treated with glyburide [75]. This regression in atherosclerosis was shown to be directly proportional to the reduction in postprandial hyperglycemia.

Alpha-glucosidase inhibitors block the α -glucosidase enzyme, thereby slowing the rate of carbohydrate digestion including starches and disaccharides. In diabetic or glucose-intolerant patients, α -glucosidase inhibitors lower postload glucose peaks by between 30 to 70 mg/dl and reduce HbA1c by about 0.7%, with negligible effects on fasting glucose levels [76]. Long-term acarbose therapy also reduces the levels of triglycerides and chylomicrons, possibly by improving insulin sensitivity [77]. A recent study showed that even a single mixed meal of 450 calories caused substantial and immediate deterioration in

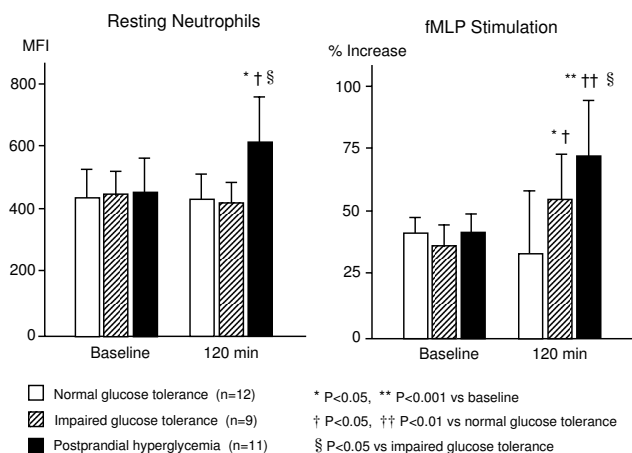


Figure 4
Expression of $\beta 2$ integrin Mac-1 on the surface of isolated neutrophils before and 120 min after an oral 75 g glucose load in 11 patients with postprandial hyperglycemia (fasting plasma glucose level <126 mg/dl and glucose level at 120 min \geq 200 mg/dl), 9 patients with impaired glucose tolerance (IGT) (fasting plasma glucose level <126 mg/dl and glucose level at 120 min \geq 140 mg/dl) and 12 patients with normal glucose tolerance (fasting plasma glucose level <126 mg/dl and glucose level at 120 min <140 mg/dl). In patients with postprandial hyperglycemia, Mac-1 expression on unstimulated neutrophils was upregulated at 120 min after glucose loading compared to baseline. In addition, fMLP-induced upregulation of Mac-1 was enhanced significantly at 120 min in both patients with postprandial hyperglycemia and patients with IGT. In contrast, these changes were not evident in patients with normal glucose tolerance.

endothelial function in diet-treated patients with diabetes [76]. Pretreatment of these same subjects with a single dose of acarbose markedly reduced postprandial hyperglycemia and associated endothelial dysfunction after the ensuing meal. The Study to Prevent Non-Insulin-Dependent Diabetes Mellitus (STOP-NIDDM) was an international trial of 1,429 subjects with impaired glucose tolerance who were randomized to either acarbose 100 mg, 3 times daily with meals or placebo [78]. After 3.3 years, acarbose significantly reduced the primary end point of the study, the progression to new diabetes, by 25%. In this trial, acarbose treatment was associated with significant reductions of 49% for any cardiovascular event and 91% for myocardial infarction. Acarbose also slowed progression of carotid atherosclerosis and reduced the development of new hypertension by 34%, results that indicated postprandial dysmetabolism may play a role in the genesis of hypertension. A large retrospective meta-analysis of seven long-term studies of acarbose in patients with type 2 diabetes showed significant risk reductions of 35% for cardiac events and 64% for myocardial infarction [79]. We have also previously observed increases in FMD

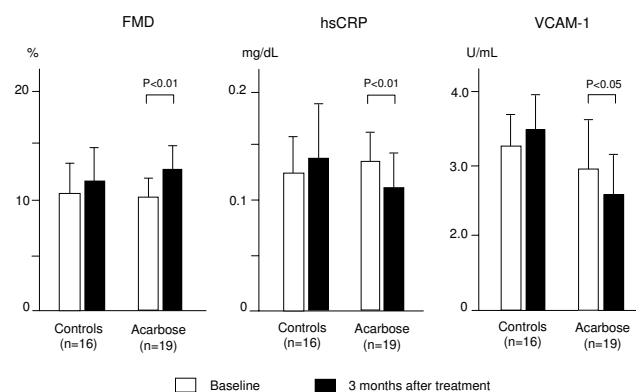


Figure 5
Effects of acarbose on vascular endothelial function and inflammatory status in patients with mild diabetes mellitus. We compared flow mediated vasodilation (FMD) and levels of high sensitivity C reactive protein (hsCRP) and circulating vascular cell adhesion molecule (VCAM)-1 in 16 patients undergoing dietary therapy alone (controls) and 19 patients receiving acarbose 100 mg 3 times daily before each meal. FMD increased and hsCRP and VCAM-1 levels decreased after 3 months of acarbose treatment, although these effects were absent in the controls.

and a reduction in hsCRP and VCAM-1 levels after 3 months of treatment with acarbose (Fig. 4). This suggests attenuation of postprandial dysmetabolism induced by acarbose results in improved endothelial function and inflammatory status, possibly slowing the progression of atherosclerosis. In addition, in a recent study in patients with mild diabetes mellitus we used meal tolerance testing to compare the effects of a new α -glucosidase inhibitor, miglitol, with those of a meglitinide analogue, mitiglinide, on postprandial glucose and insulin metabolism. Other glucose metabolism-related markers, atherosclerosis-related markers and renal function were also assessed. We showed that three months of administration of both agents caused similar improvements in postprandial hyperglycemia, although different postprandial patterns of insulin secretion were observed (Fig. 5A). The changes in 1, 5-anhydroglucitol levels after 3 months were significantly higher in the miglitol group than in the mitiglinide group. Insulin resistance assessed by the homeostasis model assessment index and urinary albumin excretion decreased significantly in the miglitol group but not in the mitiglinide group. Serum cystatin C levels did not change in the miglitol group, although the levels increased in the mitiglinide group. Miglitol caused a significant decrease in hsCRP levels, whereas mitiglinide did not (Fig. 5B and Fig 6), while serum adiponectin levels were increased significantly only by miglitol therapy [80,81]. These results suggest that miglitol has anti-inflammatory and renoprotective effects, possibly associated with an improvement in insulin resistance.

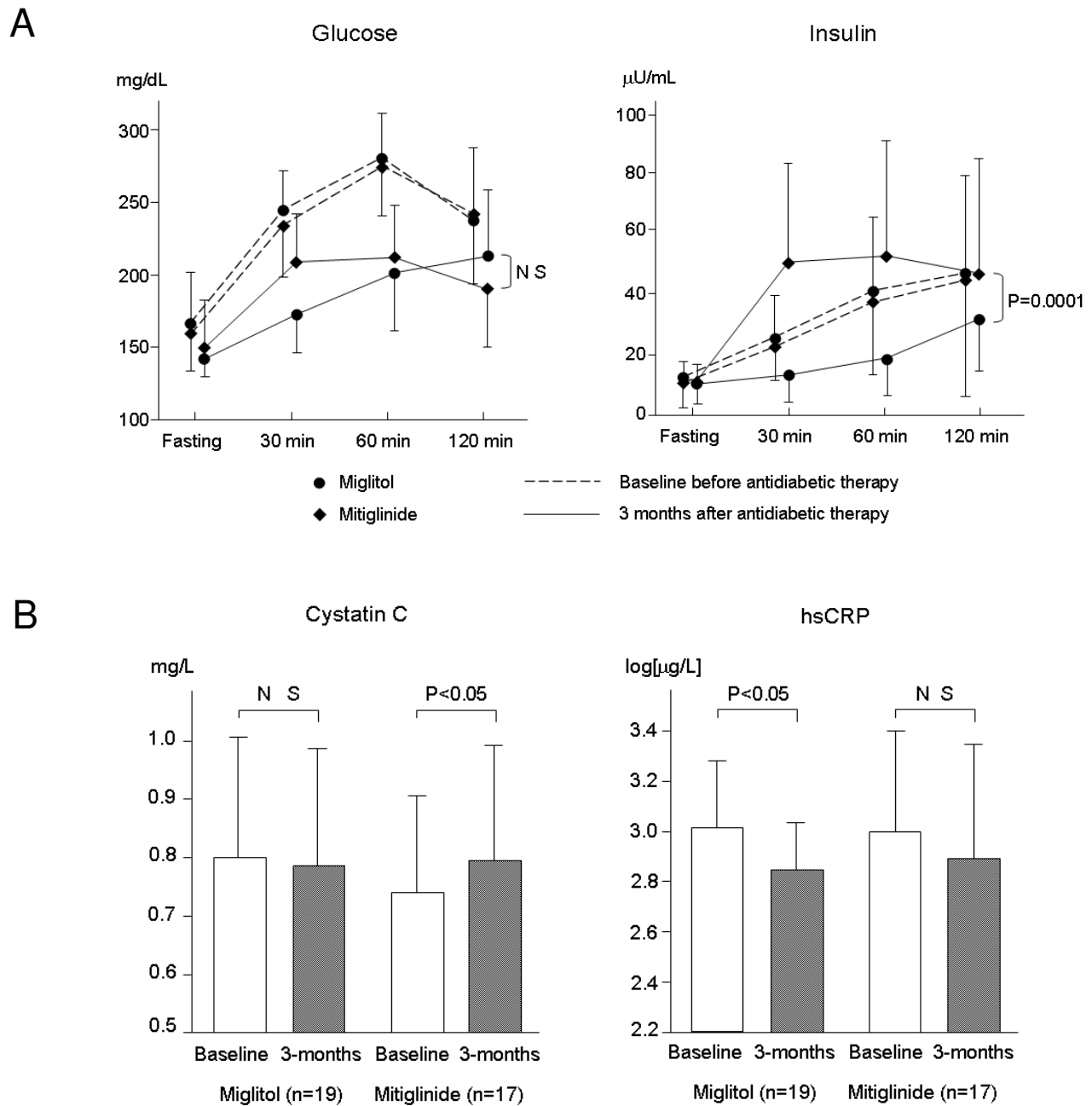


Figure 6

Comparison of the effects of miglitol and mitiglinide on postprandial glucose and insulin metabolism after meal tolerance testing in patients with mild diabetes mellitus. A pre-specified breakfast was prepared, containing 63.8 g of carbohydrate, 24.6 g of protein, 11.0 g of fat, 1.2 g of sodium and a total of 466 calories. Three months of administration of both agents caused similar improvements in postprandial hyperglycemia, although different patterns of insulin secretion were observed (A). Serum cystatin C levels did not change in the miglitol group, although the levels increased in the mitiglinide group. Miglitol caused a significant decrease in hsCRP levels whereas mitiglinide did not (B).

The thiazolidinedione peroxisome proliferator-activated receptor- γ (PPAR- γ) activating class of drugs, such as troglitazone, rosiglitazone or pioglitazone, are insulin-sensitizing agents and are not generally considered for their effects on insulin secretion [82]. However, as demonstrated with troglitazone, this class of compounds, when used in subjects with impaired glucose tolerance, may improve glucose-coupled insulin secretion and reduce the level of postprandial hyperglycemia [83]. PPAR- γ agonism has been shown to have anti-inflammatory effects and to improve endothelial function by regulating the cellular redox state. Thiazolidinediones have also been shown to decrease inflammatory markers such as hsCRP [84] and to improve FMD of the brachial artery [85]. In a large randomized clinical trial of pioglitazone in 5238 patients with type 2 diabetes with macrovascular disease there was some evidence of a reduction in adverse cardiovascular outcomes compared to matching placebo, when the treatments were taken in combination with glucose-lowering drugs and other medications [86]. Pioglitazone was also reported to reduce the rate of progression of carotid intimal medial thickness [87] and coronary atherosclerosis assessed by intravascular ultrasound imaging [88], when compared to glimepiride.

Several new drugs with glucose-lowering actions that may offer certain clinical advantages have recently become available. These include injectable glucagon-like peptide-1 (GLP-1) receptor agonists and oral dipeptidyl peptidase-4 (DPP-4) inhibitors. GLP-1 receptor agonists, such as exenatide, stimulate nutrient-induced insulin secretion and reduce inappropriate glucagon secretion, whilst delaying gastric emptying and reducing appetite. These agents have a low risk of hypoglycaemia in combination with sustained weight loss. The DPP-4 inhibitors, sitagliptin and vildagliptin, are generally weight neutral, and have less marked gastrointestinal adverse effects than the GLP-1 receptor agonists. Vildagliptin is generally well tolerated whether administered alone or in combination with glyburide or pioglitazone, and is not associated with hypoglycemia. Co-administration of vildagliptin with either glyburide or pioglitazone in patients with type 2 diabetes improves postprandial glycemic control without notable effects on drug pharmacokinetics [89].

Conclusion

During postprandial hyperglycemia, hyperglycemic spikes induce endothelial dysfunction, inflammatory reactions and oxidative stress, which may lead to progression of atherosclerosis and occurrence of cardiovascular events. Epidemiological and mechanistic data suggest that postprandial hyperglycemia or even IGT may play a role in the development and progression of atherosclerotic disease, as suggested by preliminary evidence that controlling postprandial hyperglycemia reduces the incidence of

myocardial infarction in people with IGT [78]. Postprandial hyperglycemia is therefore one of the very important pathophysiological states contributing to vascular failure. Accordingly, controlling postprandial hyperglycemia should be the focus of future clinical investigation as a potential target for preventing vascular failure.

Competing interests

The authors declare that they have no competing interests.

Authors' contributions

KN was responsible for the study design of endothelial function and inflammatory markers after treatment with acarbose and final approval of this manuscript. TI was responsible for the study design of neutrophil activation using flowcytometric analysis during glucose load, literature search, and writing the review article.

References

- Krolewski A, Kosinski E, Warram JH, Leland OS, Busick EJ, Asmal AC, Rand LI, Christlieb AR, Bradley RF, Kahn CR: **Magnitude and determinants of coronary disease in juvenile-onset diabetes mellitus.** *Am J Cardiol* 1979, **59**:750-755.
- Kannel W, McGee D: **Diabetes and cardiovascular risk factors: the Framingham Study.** *Circulation* 1979, **59**:8-13.
- Ceriello A: **The emerging role of post-prandial hyperglycemic spikes in the pathogenesis of diabetic complications.** *Diabet Med* 1998, **15**:188-193.
- Hanefeld M, Fischer S, Julius U, Schulze J, Schwanebeck U, Shmechel H, Ziegelasch HJ, Lindner J: **Risk factors for myocardial infarction and death in newly detected NIDDM: the Diabetes Intervention Study, 11-year follow-up.** *Diabetologia* 1996, **39**:1577-1583.
- Kuusisto J, Mykkanen L, Pyorala K, Laakso M: **NIDDM and its metabolic control predict coronary heart disease in elderly subjects.** *Diabetes* 1994, **43**:960-967.
- Kuusisto J, Mykkanen L, Pyorala K, Laakso M: **Non-insulin-dependent diabetes and its metabolic control are important predictors of stroke in elderly subjects.** *Stroke* 1994, **25**:1157-1164.
- Inoue T, Node K: **Vascular failure - a new clinical entity for vascular disease.** *J Hypertens* 2006, **24**:2121-2130.
- Schwartz SM, Geary RL, Adams LD: **Vascular failure: a hypothesis.** *Curr Atheroscler Rep* 2003, **5**:201-207.
- Giugliano D, Ceriello A, Paolisso G: **Oxidative stress and diabetic vascular complications.** *Diabetes Care* 1996, **19**:257-267.
- Schmidt AM, Yan SD, Wautier JL, Stern D: **Activation of receptor for advanced glycation end products: a mechanism for chronic vascular dysfunction in diabetic vasculopathy and atherosclerosis.** *Circ Res* 1999, **84**:489-497.
- Conaway DG, O'Keefe JH, Reid KJ, Spertus J: **Frequency of undiagnosed diabetes mellitus in patients with acute coronary syndrome.** *Am J Cardiol* 2005, **96**:363-365.
- Leiter LA, Ceriello A, Davidson JA, Hanefeld M, Monnier L, Owens DR, Tajima N, Tuomilehto J, International Prandial Glucose Regulation (PGR) Study Group: **Postprandial glucose regulation: new data and new implications.** *Clin Ther* 2005, **27**(suppl):S42-S56.
- Bonora E, Corrao G, Bagnardi V, Ceriello A, Comaschi M, Montanari P, Meigs JB: **Prevalence and correlates of post-prandial hyperglycaemia in a large sample of patients with type 2 diabetes mellitus.** *Diabetologia* 2006, **49**:846-854.
- Tominaga M, Eguchi H, Manaka H, Igarashi K, Kato T, Sekikawa A: **Impaired glucose tolerance is a risk factor for cardiovascular disease, but not impaired fasting glucose. The Funagata Diabetes Study.** *Diabetes Care* 1999, **22**:920-924.
- Miyazaki M, Kubo M, Kiyohara Y, Okubo K, Makamura H, Fujisawa K, Hata Y, Tokunaga S, Iida M, Nose Y, Ishibashi T: **Comparison of diagnostic methods for diabetes mellitus based on presence of retinopathy in a Japanese population: the Hisayama Study.** *Diabetologia* 2004, **47**:1411-1415.

16. Cavalot F, Petrelli A, Traversa M, Bonoma K, Fiora E, Conti M, Anfossi G, Costa G, Trovati M: **Postprandial blood glucose is a stronger predictor of cardiovascular events than fasting blood glucose in type 2 diabetes mellitus.** *J Clin Endocrinol Metab* 2006, **91**:813-819.
17. Ceriello A, Hanefeld M, Leiter L, Monnier L, Moses A, Owens D, Tajima N, Tuomilehto J: **Postprandial glucose regulation and diabetic complications.** *Arch Intern Med* 2004, **164**:2090-2095.
18. DECODE Study Group: **Is the current definition of diabetes relevant to mortality risk from all causes and cardiovascular and noncardiovascular diseases?** *Diabetes Care* 2003, **26**:688-696.
19. Sasso FC, Carbonara O, Nasti R, Campana B, Marfella R, Torella M, Nappi G, Torella R, Cozzolino D: **Glucose metabolism and coronary heart disease in patients with normal glucose tolerance.** *JAMA* 2004, **291**:1857-1863.
20. De Caterina R: **Endothelial dysfunctions: common denominators in vascular disease.** *Curr Opin Lipidol* 2000, **11**:9-23.
21. Anderson TJ: **Assessment and treatment of endothelial dysfunction in humans.** *J Am Coll Cardiol* 1999, **34**:631-638.
22. Suwaidi JA, Hamasaki S, Higano ST, Nishimura RA, Holmes DR Jr, Lerman A: **Long-term follow-up of patients with mild coronary artery disease and endothelial dysfunction.** *Circulation* 2000, **101**:948-954.
23. Bohlen HG, Lash JM: **Topical hyperglycemia rapidly suppresses EDRF-mediated vasodilation of normal rat arterioles.** *Am J Physiol* 1993, **265**:H219-H225.
24. Marfella R, Verrazzo G, Acampora R, La Marca C, Giunta R, Lucarelli C, Paolisso G, Ceriello A, Giugliano D: **Glutathione reverses systemic hemodynamic changes by acute hyperglycemia in healthy subjects.** *Am J Physiol* 1995, **268**:E1167-E1173.
25. Kawano H, Motoyama T, Hirashima O, Hirai N, Miyao Y, Sakamoto T, Kugiyama K, Ogawa H, Yasue H: **Hyperglycemia rapidly suppresses flow-mediated endothelium-dependent vasodilation of brachial artery.** *J Am Coll Cardiol* 1999, **34**:146-154.
26. Williams SB, Goldfine AB, Timimi FK, Ting HH, Robby MA, Simonson DC, Creager NA: **Acute hyperglycemia attenuates endothelium-dependent vasodilation in humans in vivo.** *Circulation* 1998, **97**:1695-1701.
27. Shige H, Ishikawa T, Suzukawa M, Ito T, Nakajima K, Higashi K, Ayaori M, Tabata S, Ohsuzu F, Nakamura H: **Endothelium-dependent flow-mediated vasodilation in the postprandial state in type 2 diabetes mellitus.** *Am J Cardiol* 1999, **84**:1172-1174.
28. Giugliano D, Marfella R, Coppola L, Verrazzo G, Acampora R, Giunta R, Nappo F, Lucarelli C, D'Onofrio F: **Vascular effects of acute hyperglycemia in humans are reversed by L-arginine: evidence for reduced availability of nitric oxide during hyperglycemia.** *Circulation* 1997, **95**:1783-1790.
29. Cosentino F, Hishikawa K, Katusic ZS, Lüscher TF: **High glucose increases nitric oxide synthase expression and superoxide anion generation in human aortic endothelial cells.** *Circulation* 1997, **96**:25-28.
30. Vlassara H, Cai W, Crandall J, Goldberg T, Oberstein R, Dardaine V, Peppas M, Rayfield EJ: **Inflammatory mediators are induced by dietary glycoxidation, a major risk factor for diabetic angiopathy.** *Proc Natl Acad Sci USA* 2002, **99**:15596-15601.
31. Goldberg T, Cai W, Peppas M, Dardaine V, Baliga BS, Uribarri J, Vlassara H: **Advanced glycoxidation end products in commonly consumed foods.** *J Am Diet Assoc* 2004, **104**:1287-1291.
32. Koschinsky T, He CJ, Mitsuhashi T, Bucala R, Liu C, Buenting C, Heitmann K, Vlassara H: **Orally absorbed reactive glycation products (glycoxidation): an environmental risk factor in diabetic nephropathy.** *Proc Natl Acad Sci USA* 1997, **94**:6474-6479.
33. Bierhaus A, Humpert PM, Morcos M, Wendt T, Chavakis T, Arnold B, Stern DM, Nawroth PP: **Understanding RAGE, the receptor for advanced glycation end products (Review).** *J Mol Med* 2005, **83**:876-886.
34. Beisswenger PJ, Howell SK, O'Dell RM, Wood ME, Touchette AD, Szewgold BS: **Dicarbonyl increase in the postprandial period and reflect the degree of hyperglycemia.** *Diabetes Care* 2001, **24**:726-732.
35. Ruoslahti E: **Integrins.** *J Clin Invest* 1991, **187**:1-5.
36. Blann AD, McCollum CN: **Circulating endothelial cell/leukocyte adhesion molecules in atherosclerosis.** *Thromb Haemost* 1994, **72**:151-154.
37. Cominacini L, Fratta Pasini A, Garbin U, Davoli A, De Santis A, Campagnola M, Rigoni A, Zenti MG, Moghetti P, Lo Cascio V: **Elevated levels of soluble E-selectin in patients with IDDM and NIDDM: relation to metabolic control.** *Diabetologia* 1995, **38**:1122-1124.
38. Ceriello A, Falletti E, Bortolotti N, Motz E, Cavarape A, Russo A, Gonano F, Bartoli E: **Increased circulating ICAM-1 levels in type-2 diabetic patients: the possible role of metabolic control and oxidative stress.** *Metabolism* 1996, **45**:498-501.
39. Ceriello A, Falletti E, Motz E, Taboga C, Tonutti L, Ezsol Z, Gonano F, Bartoli E: **Hyperglycemia-induced circulating ICAM-1 increase in diabetes mellitus: the possible role of oxidative stress.** *Horm Metab Res* 1998, **30**:146-149.
40. Marfella R, Esposito K, Giunta R, Coppola G, De Angelis L, Farzati B, Prolisso G, Giugliano D: **Circulating adhesion molecules in humans: role of hyperglycemia and hyperinsulinemia.** *Circulation* 2000, **101**:2247-2251.
41. Plutzky J: **Inflammation in atherosclerosis and diabetes mellitus.** *Rev Endocr Metab Disord* 2004, **5**:255-259.
42. Esposito K, Nappo F, Marfella R, Giugliano G, Giugliano F, Ciotola M, Quagliaro L, Ceriello A, Giugliano D: **Inflammatory cytokine concentrations are acutely increased by hyperglycemia in humans: role of oxidative stress.** *Circulation* 2002, **106**:2067-2072.
43. Nappo F, Esposito K, Cioffi M, Giugliano G, Molinari AM, Paolisso G, Marfella R, Giugliano D: **Postprandial endothelial activation in healthy subjects and in type 2 diabetic patients: role of fat and carbohydrate meals.** *J Am Coll Cardiol* 2002, **39**:1145-1150.
44. Libby P: **Vascular biology of atherosclerosis: overview and state of the art.** *Am J Cardiol* 2003, **91**:3A-6A.
45. Hoffman M, Blum A, Baruch R, Kaplan E, Benjamin M: **Leukocytes and coronary artery disease.** *Atherosclerosis* 2004, **172**:1-6.
46. Schrtz-Swirski R, Shapiro G, Sela S, Nasser L, Herskovits AT, Kristal B, Shasma SM: **Involvement of peripheral polymorphonuclear leukocytes in oxidative stress and inflammation in type 2 diabetic patients.** *Diabetes Care* 2001, **24**:104-110.
47. Sanchez-Madrid F, Nagy JA, Robbins E, Simon P, Springer TA: **A human leukocyte differentiation antigen family with distinct α -subunits and a common β -subunit: the leukocyte function-associated antigen (LFA)-1, the C3bi complement receptor (OKM1/Mac-1), and the p150,95 molecules.** *J Exp Med* 1983, **158**:1785-1803.
48. Simon DI, Chen Z, Xu H, Li CQ, Dong J, McIntire LV, Ballantyne CM, Zhang L, Furman MI, Berndt MC, Lopez JA: **Platelet glycoprotein Iba α is a counterreceptor for the leukocyte integrin Mac-1 (CD11b/CD18).** *J Exp Med* 2000, **192**:193-204.
49. Diacovo TG, de Fougères AR, Bainton DF, Springer TA: **A functional integrin ligand on the surface of platelets: intercellular adhesion molecule-2.** *J Clin Invest* 1994, **94**:1243-1251.
50. Inoue T, Uchida T, Yaguchi I, Sakai Y, Takayanagi K, Morooka S: **Stent-induced expression and activation of the leukocyte integrin Mac-1 is associated with neointimal thickening and restenosis.** *Circulation* 2003, **107**:1757-1763.
51. Oostrom AJ, Wijk JP, Sijmonsma TP, Rabelink TJ, Castro Cabezas M: **Increased expression of activation markers on monocytes and neutrophils in type 2 diabetes.** *Neth J Med* 2004, **62**:320-325.
52. Senior PA, Marshall SM, Thomas TH: **Dysregulation of PMN antigen expression in Type 2 diabetes may reflect a generalized defect of exocytosis: influence of hypertension and microalbuminuria.** *J Leukoc Biol* 1999, **65**:800-807.
53. Matsuoka H: **Endothelial dysfunction associated with oxidative stress in human.** *Diabetes Res Clin Pr* 2001, **54**(suppl 2):S65-S72.
54. Harrison DG: **Cellular and molecular mechanism of endothelial cell dysfunction.** *J Clin Invest* 1997, **100**:2153-2157.
55. Brownlee M: **Biochemistry and molecular cell biology of diabetic complications.** *Nature* 2001, **414**:813-820.
56. Ceriello A: **New insights on oxidative stress and diabetic complications may lead to a "causal" antioxidant therapy.** *Diabetes Care* 2003, **26**:1589-1596.
57. Beckman JS, Carson M, Smith CD, Koppenol WH: **ALS, SOD and peroxynitrite.** *Nature* 1993, **334**:584-588.
58. Vilet A van der, O'Neill CA, Halliwell B, Cross CE, Kaur H: **Interactions of peroxynitrite with human plasma and its constituents: oxidative damage and antioxidant depletion.** *Biochem J* 1994, **303**:295-301.

59. Pennathur S, Wagner JD, Leeuwenburgh C, Litwak KN, Heinecke JW: **A hydroxyl radical-like species oxidizes cynomolgus monkey artery wall proteins in early diabetic vascular disease.** *J Clin Invest* 2001, **107**:853-860.
60. Marfella R, Quagliaro L, Nappo F, Ceriello A, Giugliano D: **Acute hyperglycemia induces an oxidative stress in healthy subjects.** *J Clin Invest* 2001, **108**:635-636.
61. Ceriello A, Taboga C, Tonutti L, Pascon R, Piazzola M, Bais B, Marra G, Tonutti L, Taboga C, Motz E: **Evidence for an independent and cumulative effect of postprandial hypertriglyceridemia and hyperglycemia on endothelial dysfunction and oxidative stress generation: effects of short- and long-term simvastatin treatment.** *Circulation* 2002, **106**:1211-1218.
62. Ceriello A, Quagliaro L, Catone B, Pascon R, Piazzola M, Bais B, Marra G, Tonutti L, Taboga C, Motz E: **The role of hyperglycemia in nitrotyrosine postprandial generation.** *Diabetes Care* 2002, **25**:1439-1443.
63. Ceriello A, Quagliaro L, D'Amico M, Di Filippo C, Marfella R, Nappo F, Berrino L, Rossi F, Giugliano D: **Acute hyperglycemia induces nitrotyrosine formation and apoptosis in perfused heart from rat.** *Diabetes* 2002, **51**:1076-1082.
64. Mihm MJ, Jing L, Bauer JA: **Nitrotyrosine causes selective vascular endothelial dysfunction and DNA damage.** *J Cardiovasc Pharmacol* 2000, **36**:182-187.
65. Basu S: **Metabolism of 8-iso-prostaglandin F_{2α}.** *FEBS Lett* 1998, **428**:32-36.
66. Davi G, Falco A, Patrono C: **Lipid peroxidation in diabetes mellitus.** *Antioxid Redox Signal* 2005, **7**:256-258.
67. Natarajan R, Lanting L, Gonzales N, Nadler J: **Formation of an F₂-isoprostane in vascular smooth muscle cells by elevated glucose and growth factors.** *Am J Physiol* 1996, **271**:H159-H165.
68. Monnier L, Mas E, Ginet C, Michel F, Villon L, Cristol JP, Colette C: **Activation of oxidative stress by acute glucose fluctuations compared with sustained chronic hyperglycemia in patients with type 2 diabetes.** *JAMA* 2006, **295**:1681-1687.
69. Chiasson JL, Josse RG, Hunt JA, Palmason C, Rodger NW, Ross SA, Ryan EA, Tan MH, Wolever TM: **The efficacy of acarbose in the treatment of patients with non-insulin-dependent diabetes mellitus: a multicenter controlled clinical trial.** *Ann Intern Med* 1994, **121**:928-935.
70. Wolffenbittel BH, Landgraf R, on behalf of the Dutch and German Repaglinide Study Group: **A 1-year multicenter randomized double-blind comparison of repaglinide and glyburide for the treatment of type 2 diabetes.** *Diabetes Care* 1999, **22**:463-467.
71. Damsbo P, Clauson P, Marbury TC, Windfeld K: **A double-blind randomized comparison of meal-related glycemic control by repaglinide and glyburide in well-controlled type 2 diabetic patients.** *Diabetes Care* 1999, **22**:789-794.
72. Monnier L, Lapinski H, Colette C: **Contributions of fasting and postprandial plasma glucose increments to the overall diurnal hyperglycemia of type 2 diabetic patients.** *Diabetes Care* 2003, **26**:881-885.
73. Doyle ME, Egan JM: **Pharmacological agents that directly modulate insulin secretion.** *Pharmacol Rev* 2003, **55**:105-131.
74. Shimabukuro M, Higa N, Takasu N, Tagawa T, Ueda S: **A single dose of nateglinide improves post-challenge glucose metabolism and endothelial dysfunction in type 2 diabetes.** *Diabet Med* 2004, **21**:983-986.
75. Esposito K, Giugliano D, Nappo F, Marfella R: **Regression of carotid atherosclerosis by control of postprandial hyperglycemia in type 2 diabetes.** *Circulation* 2004, **110**:214-219.
76. Shimabukuro M, Higa N, Chinen I, Yamakawa K, Takasu N: **Effects of a single administration of acarbose on postprandial glucose excursion and endothelial dysfunction in type 2 diabetic patients: a randomized crossover study.** *J Clin Endocrinol Metab* 2006, **91**:837-842.
77. Ogawa S, Takeuchi K, Ito S: **Acarbose lowers serum triglyceride and postprandial chylomicron levels in type 2 diabetes.** *Diabetes Obes Metab* 2004, **6**:384-390.
78. Chiasson JL, Josse RG, Gomis R, Hanefeld M, Karasik A, Laakso M, STOP-NIDDM Trial Research Group: **Acarbose treatment and the risk of cardiovascular disease and hypertension in patients with impaired glucose tolerance.** *JAMA* 2003, **290**:486-494.
79. Hanefeld M, Cagatay M, Petrowsch T, Neuser D, Petzinna D, Rupp M: **Acarbose reduces the risk for myocardial infarction in type 2 diabetic patients: meta-analysis of seven long-term studies.** *Eur Heart J* 2004, **25**:10-16.
80. Yokoyama H, Kannno S, Ishimura I, Node K: **Miglitol increases the adiponectin level and decreases urinary albumin excretion in patients with type 2 diabetes mellitus.** *Metabolism* 2007, **56**:1458-1463.
81. Yokoyama H, Inoue T, Node K: **Effect of insulin-unstimulated diabetic therapy with miglitol on serum cystatin C level and its clinical significance.** *Diabetes Res Clin Pract* 2009, **83**(1):77-82. Epub 2008 Nov 22
82. Stumvoll M, Haring H-U: **Glitazones: clinical effects and molecular mechanisms.** *Ann Med* 2002, **34**:217-222.
83. Cavaghan MK, Ehrmann DA, Byrne MM, Polonsky KS: **Treatment with the oral antidiabetic agent troglitazone improves beta cell responses to glucose in subjects with impaired glucose tolerance.** *J Clin Invest* 1997, **100**:530-537.
84. Haffner SM, Greenberg AS, Weston WM, et al.: **Effect of rosiglitazone treatment on nontraditional markers of cardiovascular disease in patients with type 2 diabetes mellitus.** *Circulation* 2002, **106**:679-684.
85. Vita JA, Frei B, Holbrook M, Gokce N, Leaf C, Keaney JF Jr: **L-2-oxothiazolidine-4-carboxylic acid reverses endothelial dysfunction in patients with coronary artery disease.** *J Clin Invest* 1998, **101**:1408-1414.
86. Dormandy JA, Charbonnel B, Eckland DJA, Erdmann E, Massi-Benedetti M, Moules IK, Skene AM, Tan MH, Lefebvre PJ, Murray GD, Standl E, Wilcox RG, Wilhelmsen L, Betteridge J, Birkeland K, Golay A, Heine RJ, Koranyi L, Laakso M, Mokán M, Norkus A, Pirags V, Podar T, Scheen A, Scherbaum W, Scherthaner G, Schmitz O, Skrha J, Smith U, Taton J, PROactive investigators: **Secondary prevention of macrovascular events in patients with type 2 diabetes in the PROactive Study (PROspective pioglitAzone Clinical Trial In macroVascular Events): a randomised controlled trial.** *Lancet* 2005, **366**:1279-1289.
87. Mazzone T, Meyer PM, Feinsein SB, Davidson MH, Kondos GT, D'Agostino RB Sr, Perez A, Provost JC, Haffner SM: **Effect of pioglitazone compared with glimepiride on carotid intima-media thickness in type 2 diabetes; a randomized trial.** *JAMA* 2006, **296**:2572-2581.
88. Nissen SE, Nicholls SJ, Wolski K, Nesto R, Kupfer S, Perez A, Jure H, De Larocheilière R, Staniloae CS, Mavromatis K, Saw J, Hu B, Lincoff AM, Tuzcu EM, for the PERISCOPE Investigators: **Comparison of pioglitazone vs glimepiride on progression of coronary atherosclerosis in patients with type 2 diabetes: the PERISCOPE randomized controlled trial.** *JAMA* 2008, **299**:1561-1573.
89. Serra D, He YL, Bullock J, Riviere GJ, Balez S, Schwartz S, Wang Y, Ligueros-Saylan M, Jarugula V, Dole WP: **Evaluation of pharmacokinetic and pharmacodynamic interaction between the dipeptidyl peptidase IV inhibitor vildagliptin, glyburide and pioglitazone in patients with Type 2 diabetes.** *Int J Clin Pharmacol Ther* 2008, **46**:349-364.

Publish with **BioMed Central** and every scientist can read your work free of charge

"BioMed Central will be the most significant development for disseminating the results of biomedical research in our lifetime."

Sir Paul Nurse, Cancer Research UK

Your research papers will be:

- available free of charge to the entire biomedical community
- peer reviewed and published immediately upon acceptance
- cited in PubMed and archived on PubMed Central
- yours — you keep the copyright

Submit your manuscript here:
http://www.biomedcentral.com/info/publishing_adv.asp

