

Dibromidobis(pyrazine-2-carboxamide- κN^4)zinc

Sadif A. Shirvan* and Sara Haydari Dezfuli

Department of Chemistry, Omidieh Branch, Islamic Azad University, Omidieh, Iran
Correspondence e-mail: sadif.shirvan1@gmail.com

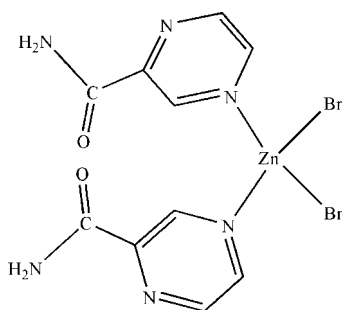
Received 27 March 2012; accepted 27 March 2012

Key indicators: single-crystal X-ray study; $T = 298$ K; mean $\sigma(C-C) = 0.008$ Å; R factor = 0.046; wR factor = 0.111; data-to-parameter ratio = 14.9.

The title complex, $[ZnBr_2(C_5H_5N_3O)_2]$, shows crystallographic mirror symmetry with the Zn atom and the two bromine ligands located on the mirror plane. The Zn atom is four-coordinated in a distorted tetrahedral fashion by two N atoms from two pyrazine-2-carboxamide ligands and two Br atoms. Only one of the amino H atoms is involved in an N—H \cdots O hydrogen bond. The crystal packing is further stabilized by weak N—H \cdots N and C—H \cdots O interactions.

Related literature

For related structures, see: Abu-Youssef *et al.* (2006); Azhdari Tehrani *et al.* (2010); Goher & Mautner (2000); Kristiansson (2002); Mir Mohammad Sadegh *et al.* (2010); Munakata *et al.* (1997); Pacigova *et al.* (2008).



Experimental

Crystal data

$[ZnBr_2(C_5H_5N_3O)_2]$
 $M_r = 471.43$
Monoclinic, $P2_1/m$

$a = 5.6042$ (4) Å
 $b = 19.5147$ (19) Å
 $c = 7.0656$ (5) Å

$\beta = 106.835$ (5)°
 $V = 739.61$ (10) Å³
 $Z = 2$
Mo $K\alpha$ radiation

$\mu = 7.08$ mm⁻¹
 $T = 298$ K
 $0.25 \times 0.24 \times 0.20$ mm

Data collection

Bruker APEXII CCD area-detector diffractometer
Absorption correction: multi-scan (SADABS; Bruker, 2007)
 $T_{min} = 0.205$, $T_{max} = 0.250$
3935 measured reflections
1495 independent reflections
1247 reflections with $I > 2\sigma(I)$
 $R_{int} = 0.053$

Refinement

$R[F^2 > 2\sigma(F^2)] = 0.046$
 $wR(F^2) = 0.111$
 $S = 1.10$
1495 reflections
100 parameters
H-atom parameters constrained
 $\Delta\rho_{max} = 0.77$ e Å⁻³
 $\Delta\rho_{min} = -1.19$ e Å⁻³

Table 1

Hydrogen-bond geometry (Å, °).

$D-H\cdots A$	$D-H$	$H\cdots A$	$D\cdots A$	$D-H\cdots A$
N3—H3B \cdots O1 ⁱ	0.86	2.01	2.869 (7)	175
N3—H3C \cdots N2	0.86	2.38	2.732 (7)	105
N3—H3C \cdots N2 ⁱⁱ	0.86	2.54	3.182 (7)	132
C3—H3 \cdots O1 ⁱⁱⁱ	0.93	2.49	3.414 (7)	172

Symmetry codes: (i) $-x + 1, -y + 1, -z + 3$; (ii) $-x, -y + 1, -z + 2$; (iii) $x - 1, y, z - 1$.

Data collection: APEX2 (Bruker, 2007); cell refinement: SAINT (Bruker, 2007); data reduction: SAINT; program(s) used to solve structure: SHELXS97 (Sheldrick, 2008); program(s) used to refine structure: SHELXL97 (Sheldrick, 2008); molecular graphics: SHELXTL (Sheldrick, 2008); software used to prepare material for publication: SHELXTL.

We are grateful to the Islamic Azad University, Omidieh Branch for financial support.

Supplementary data and figures for this paper are available from the IUCr electronic archives (Reference: BT5863).

References

- Abu-Youssef, M. A. M., Escuer, A. & Langer, V. (2006). *Eur. J. Inorg. Chem.* pp. 3177–3184.
- Azhdari Tehrani, A., Mir Mohammad Sadegh, B. & Khavasi, H. R. (2010). *Acta Cryst.* **E66**, m261.
- Bruker (2007). *SADABS, APEX2* and *SAINTE*. Bruker AXS Inc., Madison, Wisconsin, USA.
- Goher, M. A. S. & Mautner, F. A. (2000). *Polyhedron*, **19**, 601–606.
- Kristiansson, O. (2002). *Acta Cryst.* **E58**, m130–m132.
- Mir Mohammad Sadegh, B., Azhdari Tehrani, A. & Khavasi, H. R. (2010). *Acta Cryst.* **E66**, m158.
- Munakata, M., Wu, L. P., Sowa, T. K., Maekawa, M., Moriwaki, K. & Kitagawa, S. (1997). *Inorg. Chem.* **36**, 5416–5418.
- Pacigova, S., Gyepes, R., Tatiersky, J. & Sivak, M. (2008). *Dalton Trans.* pp. 121–130.
- Sheldrick, G. M. (2008). *Acta Cryst.* **A64**, 112–122.

supplementary materials

Acta Cryst. (2012). E68, m527 [doi:10.1107/S1600536812013335]

Dibromidobis(pyrazine-2-carboxamide- κN^4)zinc**Sadif A. Shirvan and Sara Haydari Dezfuli****Comment**

A few complexes of pyrazine-2-carboxamide (pzc) have been prepared, such as that of mercury (Azhdari Tehrani *et al.*, 2010; Mir Mohammad Sadegh *et al.*, 2010) and vanadium (Pacigova *et al.*, 2008), manganese (Abu-Youssef *et al.*, 2006) and copper (Kristiansson, 2002; Munakata *et al.*, 1997; Goher & Mautner, 2000).

The asymmetric unit of the title compound, (Fig. 1), contains one Zn^{II} atom, two Br atoms and one pyrazine-2-carboxamide ligand. The Zn^{II} atom is four-coordinated in a distorted tetrahedral configuration by two N atoms from two pyrazine-2-carboxamide ligands and two terminal Br atoms.

Only one of the amino H atoms is involved in a N—H \cdots O hydrogen bond. The crystal packing is further stabilized by weak N—H \cdots N and C—H \cdots O interactions.

Experimental

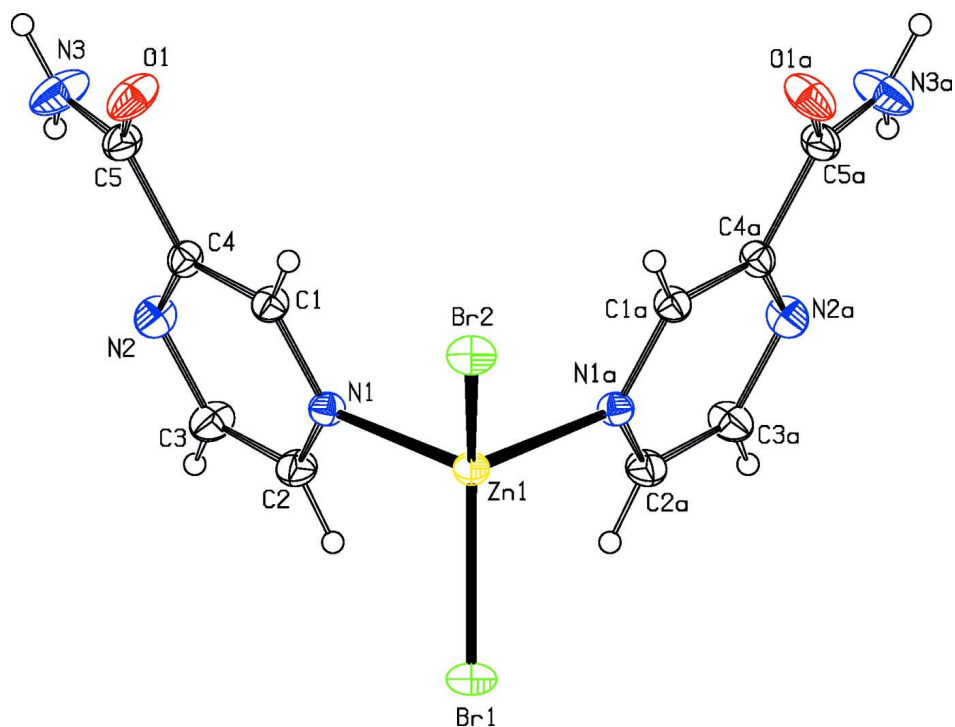
A solution of pyrazine-2-carboxamide (0.25 g, 2.0 mmol) in methanol (10 ml) was added to a solution of ZnBr₂ (0.23 g, 1.0 mmol) in methanol (10 ml) and the resulting colourless solution was stirred for 15 min at room temperature. This solution was left to evaporate slowly at room temperature. After one week, colourless block shaped crystals of the title compound were isolated (yield 0.38 g, 80.6%).

Refinement

All H atoms were positioned geometrically, with C—H = 0.93 Å and N—H = 0.86 Å and constrained to ride on their parent atoms, with $U_{\text{iso}}(\text{H})=1.2U_{\text{eq}}(\text{C,N})$.

Computing details

Data collection: *APEX2* (Bruker, 2007); cell refinement: *SAINT* (Bruker, 2007); data reduction: *SAINT* (Bruker, 2007); program(s) used to solve structure: *SHELXS97* (Sheldrick, 2008); program(s) used to refine structure: *SHELXL97* (Sheldrick, 2008); molecular graphics: *SHELXTL* (Sheldrick, 2008); software used to prepare material for publication: *SHELXTL* (Sheldrick, 2008).

**Figure 1**

The molecular structure of the title molecule, with the atom-numbering scheme. Displacement ellipsoids are drawn at the 30% probability level. [Symmetry codes: (a) $x, 3/2 - y, z$].

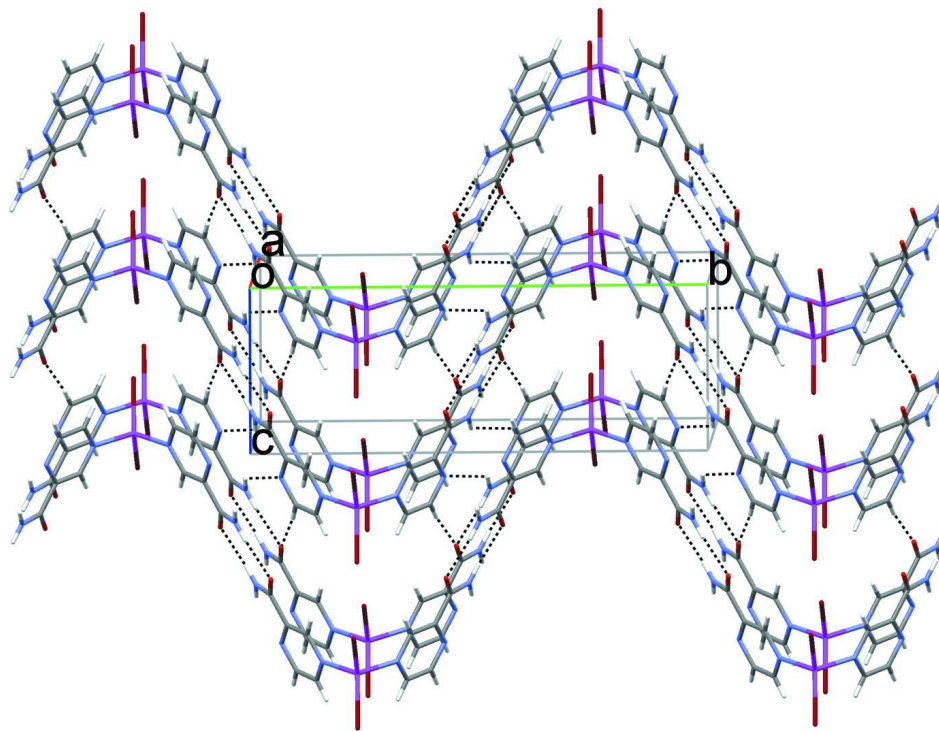


Figure 2

Unit-cell packing diagram for title molecule. Hydrogen bonds are shown as dashed lines.

Dibromidobis(pyrazine-2-carboxamide- κN^4)zinc

Crystal data

[ZnBr₂(C₅H₅N₃O)₂]
M_r = 471.43
 Monoclinic, *P*2₁/*m*
a = 5.6042 (4) Å
b = 19.5147 (19) Å
c = 7.0656 (5) Å
 β = 106.835 (5)°
V = 739.61 (10) Å³
Z = 2

F(000) = 456
D_x = 2.117 Mg m⁻³
 Mo *K*α radiation, λ = 0.71073 Å
 Cell parameters from 3935 reflections
 θ = 3.0–26.0°
 μ = 7.08 mm⁻¹
T = 298 K
 Block, colorless
 0.25 × 0.24 × 0.20 mm

Data collection

Bruker APEXII CCD area-detector
 diffractometer
 Radiation source: fine-focus sealed tube
 Graphite monochromator
 ω scans
 Absorption correction: multi-scan
 (*SADABS*; Bruker, 2007)
T_{min} = 0.205, *T_{max}* = 0.250

3935 measured reflections
 1495 independent reflections
 1247 reflections with *I* > 2σ(*I*)
R_{int} = 0.053
 θ_{\max} = 26.0°, θ_{\min} = 3.0°
h = -6→6
k = -21→24
l = -8→8

Refinement

Refinement on *F*²
 Least-squares matrix: full
R[*F*² > 2σ(*F*²)] = 0.046
wR(*F*²) = 0.111
S = 1.10
 1495 reflections
 100 parameters
 0 restraints
 Primary atom site location: structure-invariant
 direct methods

Secondary atom site location: difference Fourier
 map
 Hydrogen site location: inferred from
 neighbouring sites
 H-atom parameters constrained
 $w = 1/[\sigma^2(F_o^2) + (0.0663P)^2]$
 where $P = (F_o^2 + 2F_c^2)/3$
 $(\Delta/\sigma)_{\max} = 0.003$
 $\Delta\rho_{\max} = 0.77 \text{ e \AA}^{-3}$
 $\Delta\rho_{\min} = -1.19 \text{ e \AA}^{-3}$

Special details

Geometry. All e.s.d.'s (except the e.s.d. in the dihedral angle between two l.s. planes) are estimated using the full covariance matrix. The cell e.s.d.'s are taken into account individually in the estimation of e.s.d.'s in distances, angles and torsion angles; correlations between e.s.d.'s in cell parameters are only used when they are defined by crystal symmetry. An approximate (isotropic) treatment of cell e.s.d.'s is used for estimating e.s.d.'s involving l.s. planes.

Refinement. Refinement of *F*² against ALL reflections. The weighted *R*-factor *wR* and goodness of fit *S* are based on *F*², conventional *R*-factors *R* are based on *F*, with *F* set to zero for negative *F*². The threshold expression of *F*² > σ(*F*²) is used only for calculating *R*-factors(gt) *etc.* and is not relevant to the choice of reflections for refinement. *R*-factors based on *F*² are statistically about twice as large as those based on *F*, and *R*-factors based on ALL data will be even larger.

Fractional atomic coordinates and isotropic or equivalent isotropic displacement parameters (Å²)

	<i>x</i>	<i>y</i>	<i>z</i>	<i>U_{iso}</i> */ <i>U_{eq}</i>
C1	0.5931 (9)	0.6363 (3)	1.0284 (7)	0.0268 (10)
H1	0.7306	0.6466	1.1350	0.032*

C2	0.3658 (9)	0.6512 (3)	0.7068 (8)	0.0322 (11)
H2	0.3429	0.6717	0.5839	0.039*
C3	0.1931 (10)	0.6034 (3)	0.7302 (8)	0.0360 (12)
H3	0.0550	0.5936	0.6237	0.043*
C4	0.4230 (9)	0.5883 (3)	1.0503 (7)	0.0264 (10)
C5	0.4616 (10)	0.5526 (3)	1.2446 (8)	0.0320 (11)
N1	0.5632 (7)	0.6684 (2)	0.8557 (6)	0.0256 (9)
N2	0.2205 (7)	0.5714 (2)	0.9018 (7)	0.0334 (10)
N3	0.2721 (10)	0.5171 (3)	1.2679 (8)	0.0532 (15)
H3B	0.2850	0.4963	1.3778	0.064*
H3C	0.1355	0.5147	1.1732	0.064*
O1	0.6621 (7)	0.5585 (2)	1.3724 (6)	0.0469 (11)
Zn1	0.79117 (14)	0.7500	0.82766 (12)	0.0244 (2)
Br1	0.79321 (15)	0.7500	0.49867 (12)	0.0392 (2)
Br2	1.13911 (12)	0.7500	1.10460 (11)	0.0351 (2)

Atomic displacement parameters (\AA^2)

	U^{11}	U^{22}	U^{33}	U^{12}	U^{13}	U^{23}
C1	0.025 (2)	0.029 (3)	0.023 (2)	-0.0022 (18)	0.0017 (19)	0.001 (2)
C2	0.035 (3)	0.035 (3)	0.023 (3)	-0.001 (2)	0.002 (2)	0.002 (2)
C3	0.033 (3)	0.043 (3)	0.026 (3)	-0.011 (2)	-0.001 (2)	0.003 (2)
C4	0.025 (2)	0.026 (2)	0.027 (3)	-0.0027 (19)	0.0062 (19)	0.001 (2)
C5	0.036 (3)	0.032 (3)	0.026 (3)	-0.009 (2)	0.006 (2)	0.001 (2)
N1	0.0247 (18)	0.028 (2)	0.024 (2)	-0.0028 (17)	0.0075 (16)	-0.0010 (17)
N2	0.027 (2)	0.037 (3)	0.033 (2)	-0.0069 (18)	0.0033 (18)	0.001 (2)
N3	0.044 (3)	0.074 (4)	0.034 (3)	-0.028 (3)	0.000 (2)	0.017 (3)
O1	0.043 (2)	0.055 (3)	0.032 (2)	-0.0183 (19)	-0.0068 (17)	0.0147 (19)
Zn1	0.0224 (4)	0.0275 (4)	0.0247 (4)	0.000	0.0088 (3)	0.000
Br1	0.0424 (4)	0.0536 (5)	0.0242 (4)	0.000	0.0138 (3)	0.000
Br2	0.0222 (4)	0.0511 (5)	0.0302 (4)	0.000	0.0049 (3)	0.000

Geometric parameters (\AA , $^\circ$)

C1—N1	1.338 (6)	C4—C5	1.499 (7)
C1—C4	1.377 (7)	C5—O1	1.226 (6)
C1—H1	0.9300	C5—N3	1.317 (7)
C2—N1	1.331 (7)	N1—Zn1	2.086 (4)
C2—C3	1.388 (8)	N3—H3B	0.8600
C2—H2	0.9300	N3—H3C	0.8600
C3—N2	1.333 (7)	Zn1—N1 ⁱ	2.086 (4)
C3—H3	0.9300	Zn1—Br1	2.3278 (11)
C4—N2	1.345 (6)	Zn1—Br2	2.3283 (11)
N1—C1—C4	120.8 (5)	N3—C5—C4	116.8 (5)
N1—C1—H1	119.6	C2—N1—C1	117.3 (4)
C4—C1—H1	119.6	C2—N1—Zn1	120.6 (4)
N1—C2—C3	121.6 (5)	C1—N1—Zn1	121.7 (3)
N1—C2—H2	119.2	C3—N2—C4	116.3 (4)
C3—C2—H2	119.2	C5—N3—H3B	120.0

N2—C3—C2	121.6 (5)	C5—N3—H3C	120.0
N2—C3—H3	119.2	H3B—N3—H3C	120.0
C2—C3—H3	119.2	N1—Zn1—N1 ⁱ	99.5 (2)
N2—C4—C1	122.4 (5)	N1—Zn1—Br1	105.96 (12)
N2—C4—C5	117.7 (4)	N1 ⁱ —Zn1—Br1	105.96 (12)
C1—C4—C5	119.9 (4)	N1—Zn1—Br2	107.88 (12)
O1—C5—N3	123.9 (5)	N1 ⁱ —Zn1—Br2	107.88 (12)
O1—C5—C4	119.3 (5)	Br1—Zn1—Br2	126.45 (4)
<hr/>			
N1—C2—C3—N2	-1.7 (9)	C4—C1—N1—Zn1	172.0 (4)
N1—C1—C4—N2	-0.1 (8)	C2—C3—N2—C4	0.5 (8)
N1—C1—C4—C5	179.4 (5)	C1—C4—N2—C3	0.4 (8)
N2—C4—C5—O1	168.4 (5)	C5—C4—N2—C3	-179.2 (5)
C1—C4—C5—O1	-11.2 (8)	C2—N1—Zn1—N1 ⁱ	75.8 (4)
N2—C4—C5—N3	-12.6 (8)	C1—N1—Zn1—N1 ⁱ	-97.0 (4)
C1—C4—C5—N3	167.8 (5)	C2—N1—Zn1—Br1	-33.9 (4)
C3—C2—N1—C1	1.9 (8)	C1—N1—Zn1—Br1	153.3 (4)
C3—C2—N1—Zn1	-171.2 (4)	C2—N1—Zn1—Br2	-171.8 (4)
C4—C1—N1—C2	-1.0 (7)	C1—N1—Zn1—Br2	15.4 (4)

Symmetry code: (i) $x, -y+3/2, z$.

Hydrogen-bond geometry ($\text{\AA}, ^\circ$)

$D-H\cdots A$	$D-H$	$H\cdots A$	$D\cdots A$	$D-H\cdots A$
N3—H3B \cdots O1 ⁱⁱ	0.86	2.01	2.869 (7)	175
N3—H3C \cdots N2	0.86	2.38	2.732 (7)	105
N3—H3C \cdots N2 ⁱⁱⁱ	0.86	2.54	3.182 (7)	132
C3—H3 \cdots O1 ^{iv}	0.93	2.49	3.414 (7)	172

Symmetry codes: (ii) $-x+1, -y+1, -z+3$; (iii) $-x, -y+1, -z+2$; (iv) $x-1, y, z-1$.