

# THE LANCET

## **Supplementary appendix**

This appendix formed part of the original submission and has been peer reviewed. We post it as supplied by the authors.

Supplement to: Wardlaw JM, Murray V, Berge E, et al. Recombinant tissue plasminogen activator for acute ischaemic stroke: an updated systematic review and meta-analysis. *Lancet* 2012; published online May 23. DOI:10.1016/S0140-6736(12)60738-7.

## **Web Appendices**

**Web Appendix:** Search strategy

**Web figure 1:** PRISMA diagram

**Web figure 2:** Effect of rt-PA on SICH within 7 days, by trial. Treatment up to six hours

**Web-figure 3:** Effects on all deaths by the end of follow-up, by trial. Treatment up to six hours

**Web-figure 4:** Effects on Alive and Independent (mRS 0-2) at the end of follow-up, by trial. Treatment up to six hours.

**Web-figure 5:** Effects on favourable outcome (mRS 0-1) at the end of follow-up, by trial, treatment up to six hours.

## Web Appendix 1, Search Strategy

Search included:       Cochrane Stroke Trials Registry to November 2011  
Internet Stroke Trials Centre: in March 2011  
References in Review Articles, Conference abstracts  
Full details of historical searches are in The Cochrane Library

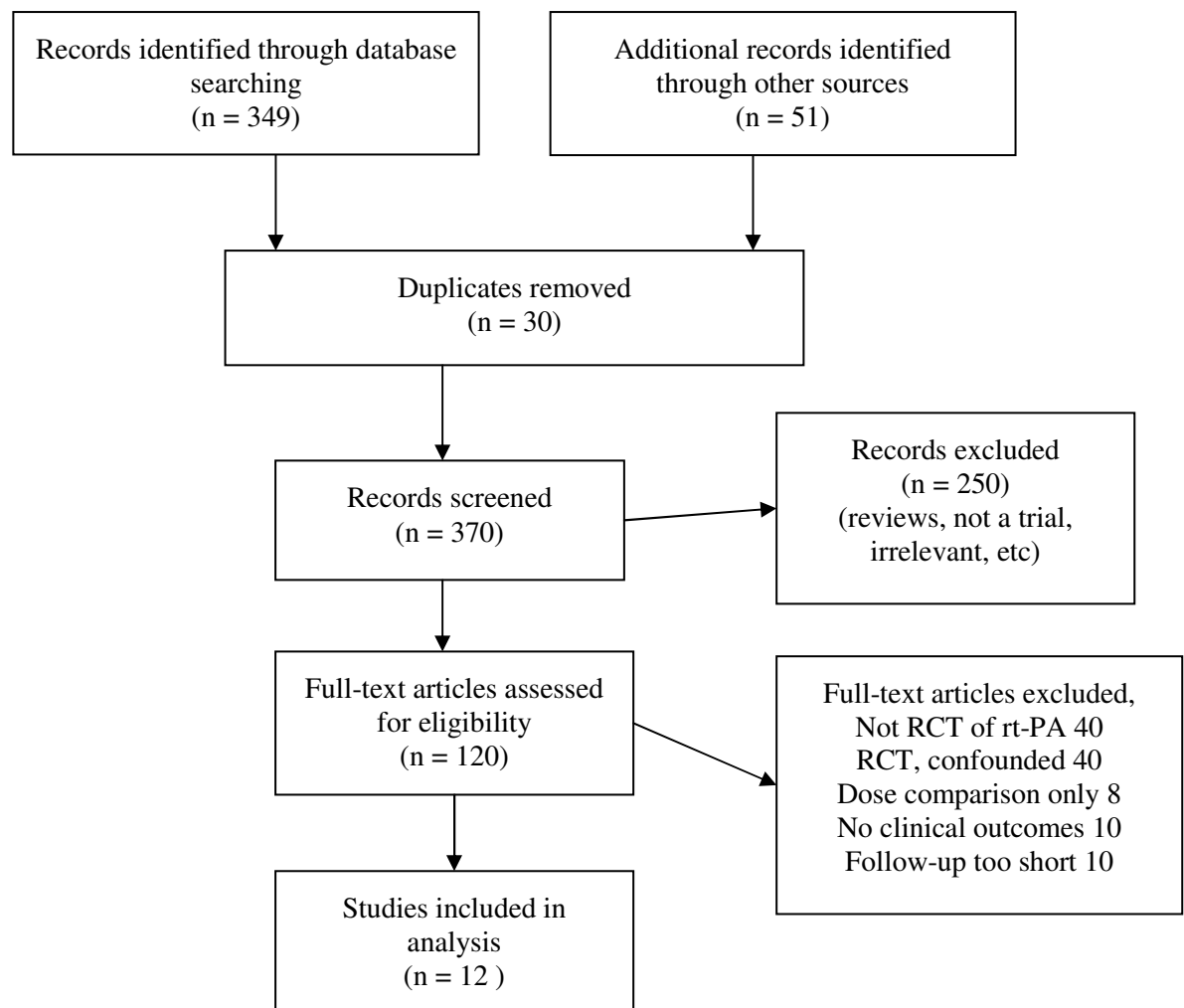
MEDLINE 1966 to March 2012 (similar search run in EMBASE)

- 1 Cerebrovascular disorders/
- 2 exp Brain ischemia/
- 3 Carotid artery diseases/ or Carotid artery thrombosis/
- 4 stroke/ or exp brain infarction/
- 5 exp Hypoxia-ischemia, brain/
- 6 Cerebral arterial diseases/ or Intracranial arterial diseases/
- 7 exp "Intracranial embolism and thrombosis"/
- 8 (stroke\$ or apoplex\$ or cerebral vasc\$ or cerebrovasc\$ or cva or transient isch?emic attack\$ or tia\$).tw.
- 9 (brain or cerebr\$ or cerebell\$ or vertebrobasil\$ or hemispher\$ or intracran\$ or intracerebral or infratentorial or supratentorial or middle cerebr\$ or mca\$ or anterior circulation).tw.
- 10 (isch?emi\$ or infarct\$ or thrombo\$ or emboli\$ or occlus\$ or hypoxi\$).tw.
- 11 9 and 10
- 12 1 or 2 or 3 or 4 or 5 or 6 or 7 or 8 or 11
- 13 Thrombolytic therapy/
- 14 Fibrinolysis/
- 15 exp plasminogen activators/
- 16 Fibrinolytic agents/ or Plasmin/ or Plasminogen/
- 17 (thromboly\$ or fibrinoly\$ or clot lysis).tw.
- 18 (plasminogen or plasmin or tPA or t-PA or rtPA or rt-PA).tw.
- 19 (anistreplase or streptodornase or streptokinase or urokinase or pro?urokinase or rpro?uk or lumbrokinase or duteplase or lanoteplase or pamiteplase or reteplase or saruplase or staphylokinase or streptase or alteplase).tw.
- 20 exp "intracranial embolism and thrombosis"/dt or Thromboembolism/dt
- 21 Thrombosis/dt [Drug Therapy]
- 22 or/13-21
- 23 12 and 22
- 24 randomized controlled trial.pt.
- 25 randomized controlled trials/
- 26 controlled clinical trial.pt.
- 27 controlled clinical trials/
- 28 random allocation/
- 29 double-blind method/
- 30 single-blind method/
- 31 clinical trial.pt.
- 32 exp clinical trials/
- 33 (clin\$ adj25 trial\$).tw.
- 34 ((singl\$ or doubl\$ or tripl\$ or trebl\$) adj25 (blind\$ or mask\$)).tw.
- 35 placebos/
- 36 placebo\$.tw.
- 37 random\$.tw.
- 38 research design/

39 clinical trial phase ii.pt.  
40 clinical trial phase iii.pt.  
41 clinical trial phase iv.pt.  
42 multicenter study.pt.  
43 intervention studies/  
44 control\$.tw.  
45 latin square.tw.  
46 "comparative study"/  
47 exp evaluation studies/  
48 Follow-up studies/  
49 Prospective studies/  
50 prospective.tw.  
51 (versus or allocat\$.tw.  
52 experimental group\$.tw.  
53 or/24-52  
54 23 and 53  
55 limit 54 to human

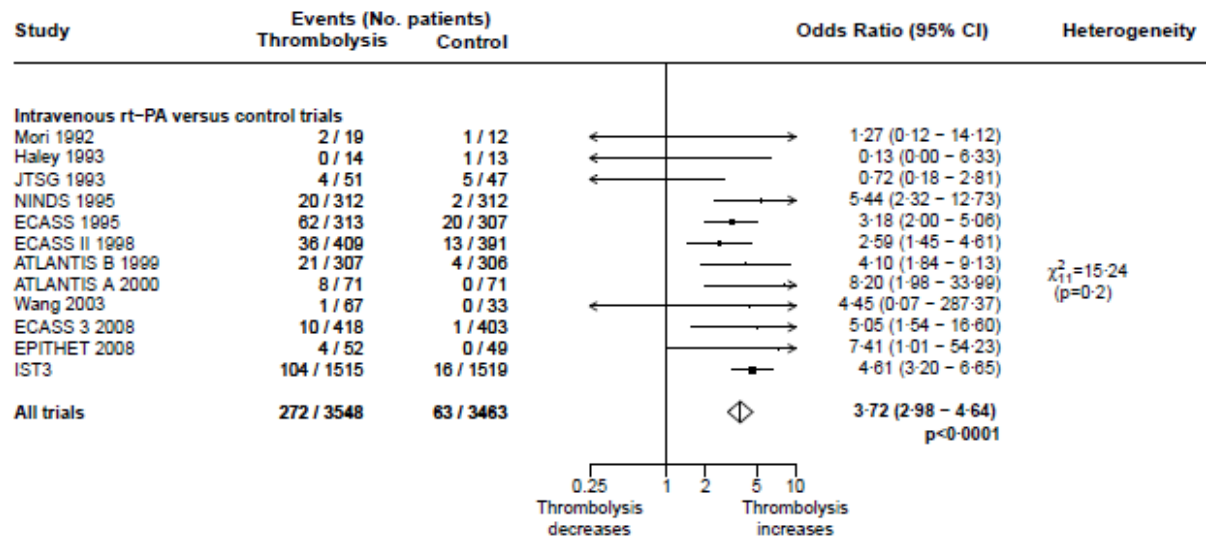
### Web figure 1: PRISMA diagram

Note the search for randomised trials of thrombolysis versus control has been ongoing since 1989, repeated every few years and by continuous monitoring of the relevant literature, conferences, contact with investigators, etc. The following is a distillate of the most recent searches and does not represent the full search volume back to 1989. Further details are available in the Cochrane Library.



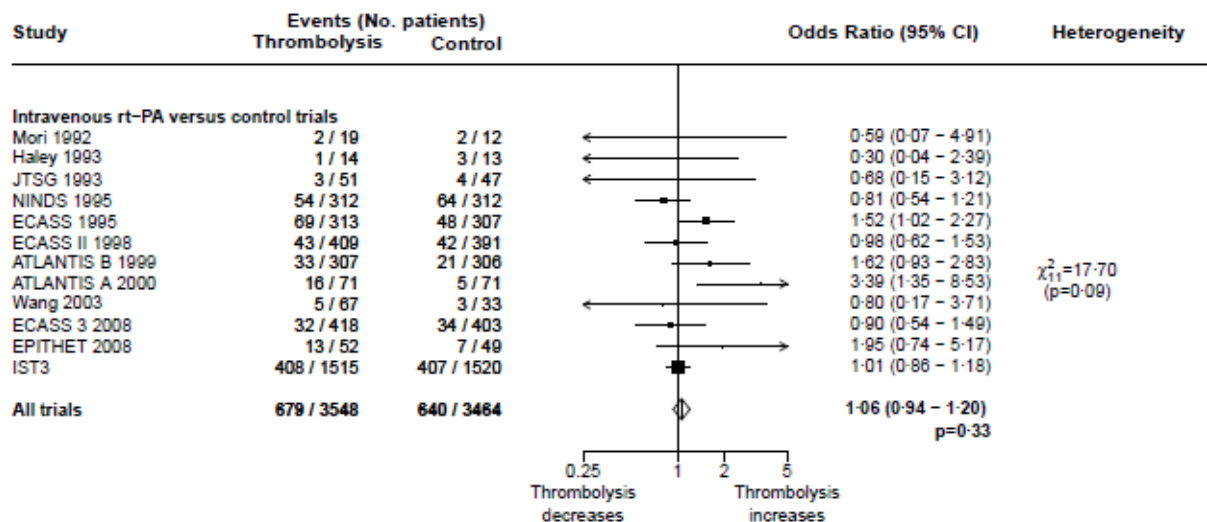
## Web figure 2

Effects on SICH WITHIN 7 DAYS, by trial. Treatment up to 6 hours



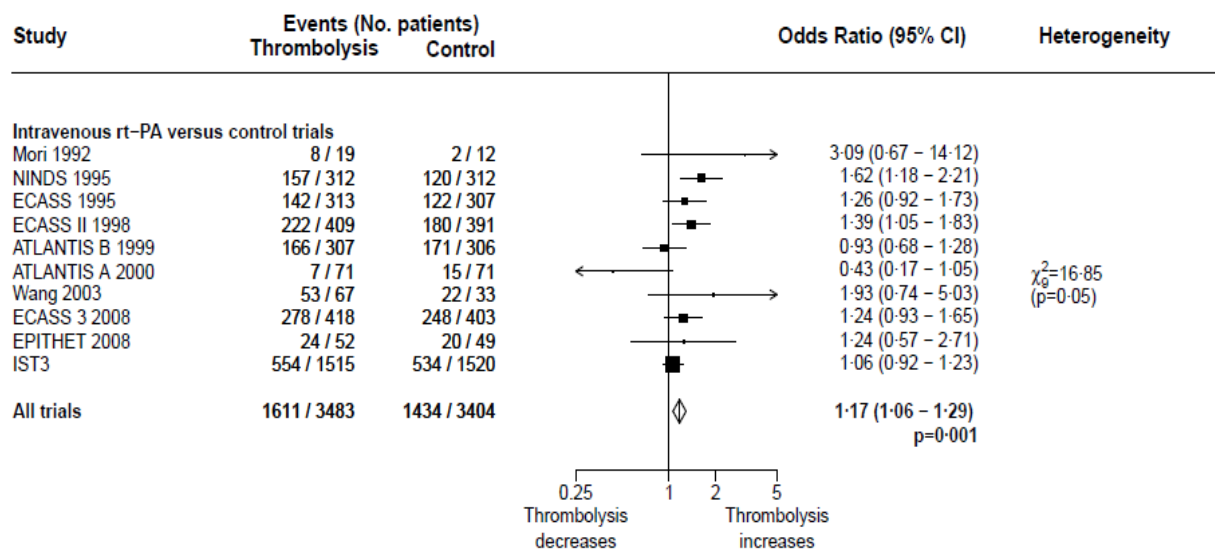
## Web figure 3

Effects on ALL DEATHS BY THE END OF FOLLOW-UP, by trial. Treatment up to 6 hours



## Web figure 4 mRS 0-2

Web-figure 4: Effects on ALIVE AND INDEPENDENT (mRS 0-2) at end of follow-up, by trial. Treatment up to 6 hours



## Web figure 5 mRS 0-1

Web-figure 5: Effects on FAVOURABLE OUTCOME, by trial. Treatment up to 6 hours

