


RESEARCH ARTICLE

Open Access



# Dynamic interactions between cephalixin and macrophages on different *Staphylococcus aureus* inoculum sizes: a tripartite in vitro model

Elodie Anne Lallemand<sup>1\*</sup> , Claudine Zemirline<sup>2</sup>, Pierre-Louis Toutain<sup>1,3</sup>, Alain Bousquet-Melou<sup>1</sup>, Aude A. Ferran<sup>1</sup> and Séverine Boullier<sup>1</sup>

## Abstract

**Background:** The bactericidal activity of an antimicrobial drug is generally assessed by in vitro bacterial time-kill experiments which do not include any components of the immune system, even though the innate immunity, the primary host defence, is probably able to kill a large proportion of pathogenic bacteria in immunocompetent patients.

We developed an in vitro tripartite model to investigate the joint action of C57Bl/6 murine bone-marrow-derived macrophages and cephalixin on the killing of *Staphylococcus aureus*.

**Results:** By assessing the bactericidal effects on four bacterial inoculum sizes, we showed that macrophages can cooperate with cephalixin on inoculum sizes lower than  $10^6$  CFU/mL and conversely, protect *S. aureus* from cephalixin killing activity at the highest inoculum size. Cell analysis by flow cytometry revealed that macrophages were rapidly overwhelmed when exposed to large inoculums. Increasing the initial inoculum size from  $10^5$  to  $10^7$  CFU/mL increased macrophage death and decreased their ability to kill bacteria from six hours after exposure to bacteria. The addition of cephalixin at 16-fold MIC to  $10^5$  and  $10^6$  CFU/mL inoculums allowed the macrophages to survive and to maintain their bactericidal activity as if they were exposed to a small bacterial inoculum. However, with the highest inoculum size of  $10^7$  CFU/mL, the final bacterial counts in the supernatant were higher with macrophages plus cephalixin than with cephalixin alone.

**Conclusions:** These results suggest that if the bacterial population at the infectious site is low, as potentially encountered in the early stage of infection or at the end of an antimicrobial treatment, the observed cooperation between macrophages and cephalixin could facilitate its control.

**Keywords:** *Staphylococcus aureus*, Cephalixin, Macrophages, Killing curves, Antimicrobial

\* Correspondence: [elodie.lallemand@envt.fr](mailto:elodie.lallemand@envt.fr)

<sup>1</sup>InTheRes, Université de Toulouse, INRAE, ENVT, 23 chemin des Capelles, BP 87614, 31 076 Toulouse Cedex 3, France

Full list of author information is available at the end of the article



© The Author(s). 2021 **Open Access** This article is licensed under a Creative Commons Attribution 4.0 International License, which permits use, sharing, adaptation, distribution and reproduction in any medium or format, as long as you give appropriate credit to the original author(s) and the source, provide a link to the Creative Commons licence, and indicate if changes were made. The images or other third party material in this article are included in the article's Creative Commons licence, unless indicated otherwise in a credit line to the material. If material is not included in the article's Creative Commons licence and your intended use is not permitted by statutory regulation or exceeds the permitted use, you will need to obtain permission directly from the copyright holder. To view a copy of this licence, visit <http://creativecommons.org/licenses/by/4.0/>. The Creative Commons Public Domain Dedication waiver (<http://creativecommons.org/publicdomain/zero/1.0/>) applies to the data made available in this article, unless otherwise stated in a credit line to the data.

## Background

*Staphylococcus aureus* is a major human and veterinary pathogen causing significant morbidity and mortality. It causes a diverse array of infections ranging from relatively minor skin and wound infections to more serious and life-threatening diseases such as endocarditis, osteomyelitis and sepsis [1]. For animal production, inflammation of the udder (mastitis) is a frequent and costly disease in the dairy industry. Infection with Gram-positive pathogens like *S. aureus* often causes mild signs of mastitis but ineffective pathogen clearance frequently leads to chronic infection leading to anticipated culling of the animals [2, 3].

Concern about the emergence of multidrug-resistant *S. aureus* strains both in human and animal infections has renewed interest in proposing appropriate treatment regimens [4, 5]. Prediction and quantification of the activity of antibacterial agents is the basis for their rational and safe use in the treatment of bacterial infectious diseases. Pharmacodynamic (PD) parameters, notably the minimum inhibitory concentration (MIC), and bactericidal time-kill curves combined with pharmacokinetics, are routinely used to design dosage regimens [6]. However, most PD studies do not take the antibacterial effects of the host immune system into account even though the innate immunity is the primary host defence and is able to kill 99.9% of micro-organisms in immunocompetent patients [7]. Since one of the first steps in the control of infection in vivo is the phagocytosis and killing of bacterial cells, the use of an in vitro dynamic cellular model to investigate the overall interactions involving bacteria, antimicrobial drugs and phagocytes over time constitutes an advantageous tool compared to classical in vitro methods that often ignore the contribution of the host immune defence system to bacterial eradication.

Among the innate immunity actors, macrophages are now known to be the primary host defence cells. As resident macrophages are the key sentinels and orchestrators of the inflammatory response against invading pathogens [8], they are relevant cells for studying their interaction with bacteria and antimicrobial drugs. Studies focusing on this tripartite interaction have already been performed with macrophages derived from cell lines [9–14] or with human macrophages derived from monocytes [15, 16]. However, all these studies focused mainly on the effects on intracellular bacteria, and the drug effects on extracellular bacteria were always assessed separately in the absence of phagocytes. In the present study, we investigated the effects of an antimicrobial drug, cephalexin, a first-generation cephalosporin which does not penetrate macrophages [17, 18] and macrophages derived from murine bone marrow on bacteria. We took into account extracellular and

intracellular bacteria simultaneously as both bacterial populations are interrelated, each one representing a potential reservoir for the other. Moreover, as the size of the bacterial population at the infectious site can vary greatly during a natural infection, we exposed different sizes of *S. aureus* inoculums to drug and macrophages to assess their different interactions over the infection course.

Our aim was to investigate the in vitro antibacterial effect of cephalexin and murine bone-marrow-derived macrophages, against different *S. aureus* inoculum sizes, and also their possible interactions. The first endpoint, selected as an indicator of the therapeutic efficacy, was the reduction of the extracellular bacterial counts after exposure to cephalexin and macrophages. We then used flow cytometry to investigate the mechanisms which might be responsible for the observed effects on the bacterial population. Among the potentially involved mechanisms, we explored the ability of macrophages to survive, to phagocyte and to kill bacteria over 12 h of contact with bacteria.

## Results

### Assessment of cephalexin cytotoxicity on macrophages

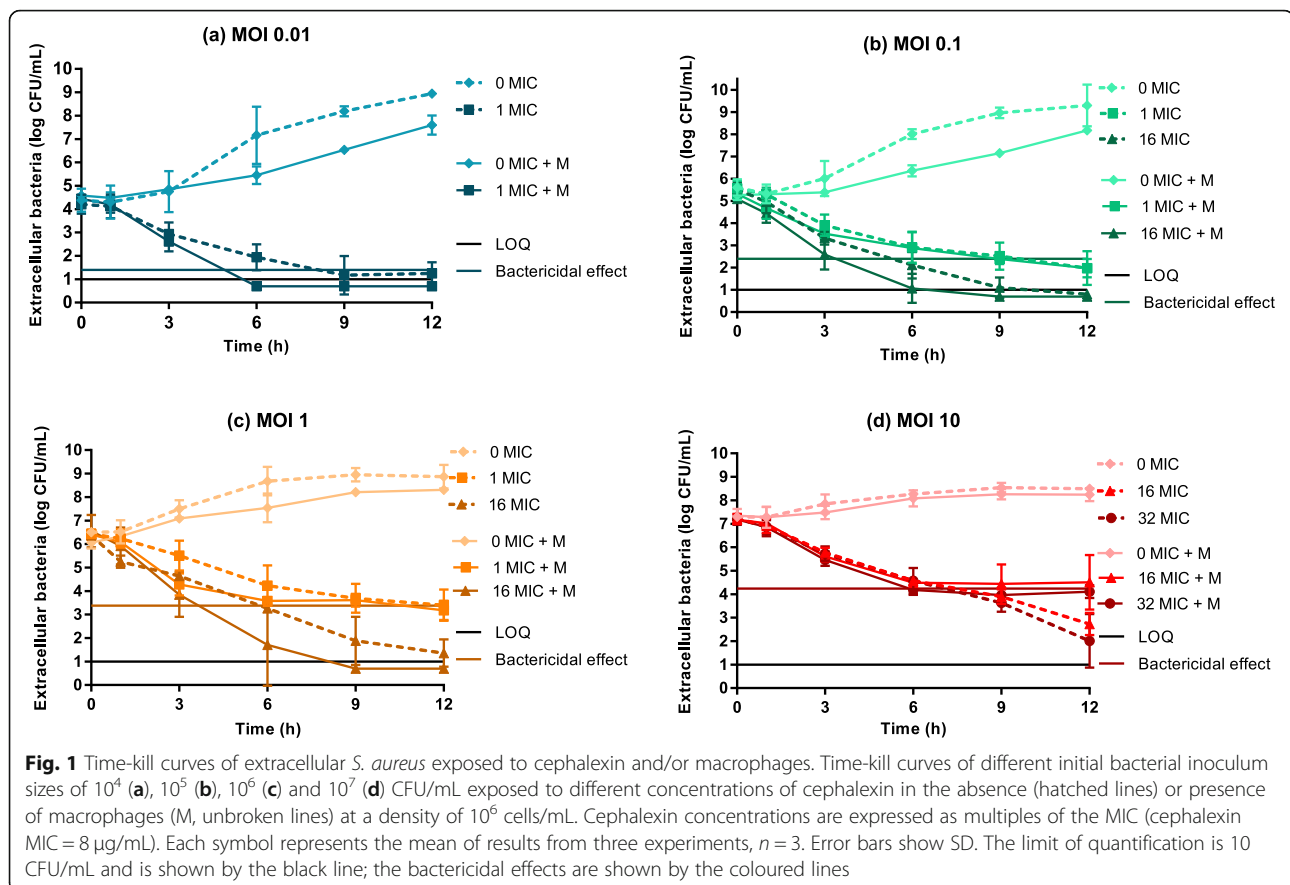
The ratio of dying macrophages in presence of cephalexin for 12 h were 1.0 to 2.6 fold higher than in controls without cephalexin and did not indicate a significant toxicity of cephalexin on macrophages (analysis of variance (ANOVA),  $p = 0.12$ ). The proportion of naturally dying macrophages (approximately 30% in all tested conditions ( $28.8\% \pm 3.7\%$ )) was then taken into account to compute the phagocytosis index.

### Time-kill of extracellular bacteria in the tripartite model

The cephalexin MICs of green fluorescent protein (GFP)-*S. aureus* HG001 were 16  $\mu\text{g}/\text{mL}$  in Mueller Hinton broth (MHB) and 8  $\mu\text{g}/\text{mL}$  in Roswell Park Memorial Institute (RPMI) 1640 media with HEPES and Glutamax I + 10% 56 °C heat-inactivated foetal calf serum (cRPMI).

The time-kill curves for different inoculum sizes of GFP-*S. aureus* HG001, exposed or not to macrophages and to different concentrations of cephalexin, are shown in Fig. 1. Without cephalexin, the growth rate of bacteria in the lower initial inoculum sizes (multiplicity of infection (MOI) 0.01 ( $10^4$  colony forming unit (CFU)/mL), 0.1 ( $10^5$  CFU/mL) and 1 ( $10^6$  CFU/mL), Fig. 1a-c) was decreased by the presence of macrophages. No bacteriostatic effect of macrophages was detectable at the highest inoculum size (MOI 10 ( $10^7$  CFU/mL)) (Fig. 1d).

In absence of cephalexin, the analysis of the ratios of the counts of extracellular GFP-*S. aureus* at 3, 6 or 12 h divided by the initial bacterial inoculum size by ANOVA revealed that both MOI and the presence of



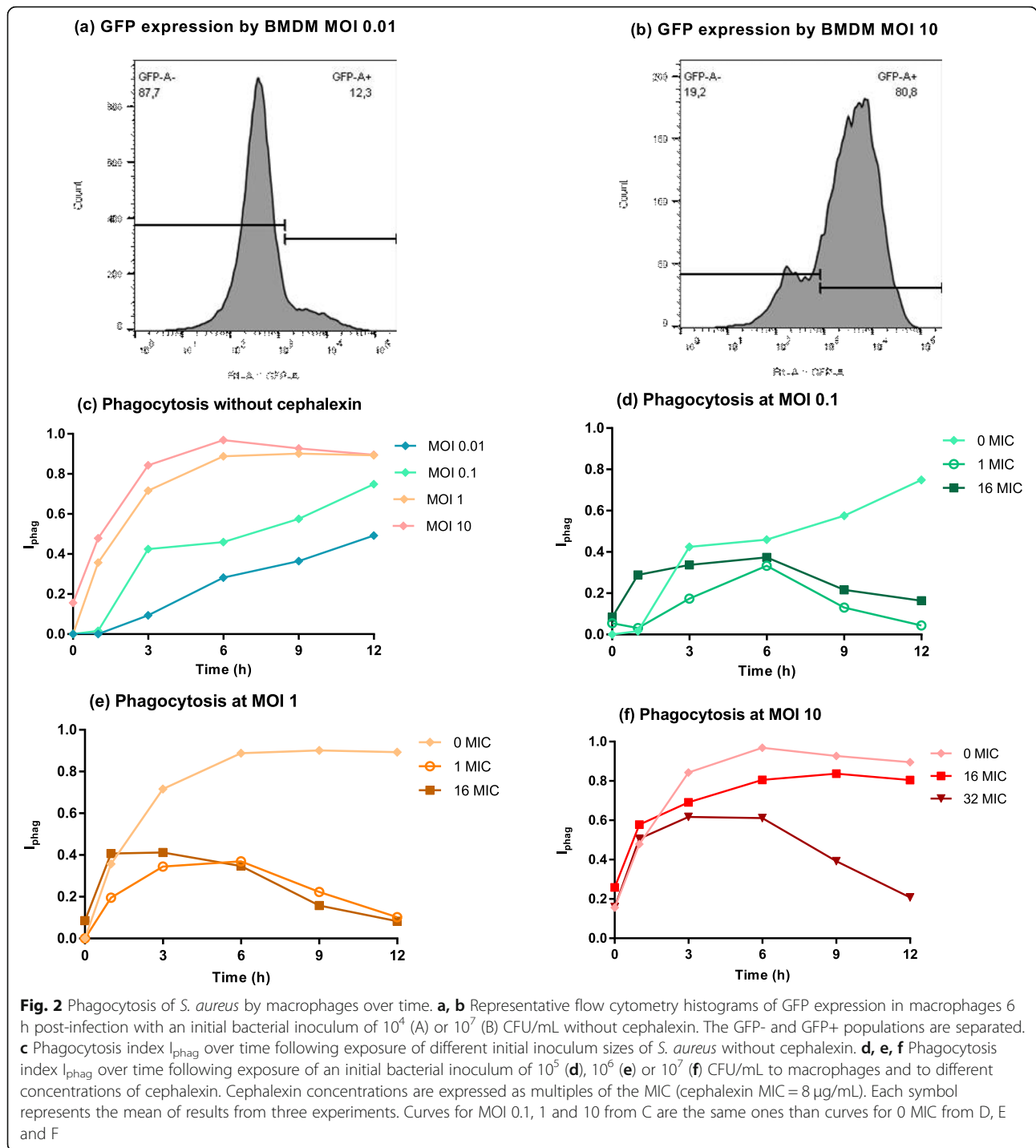
macrophages had a significant effect on extracellular bacterial counts. The extracellular bacteria counts were significantly decreased by the presence of macrophages after 6 and 12 h of exposure for the lowest MOI of 0.01 and after 6 h for MOI 0.1. No bacteriostatic effect of macrophages was observed without cephalexin at the highest MOIs of 1 and 10.

Whatever the initial inoculum size, the bacterial killing activity of cephalexin increased with time and with the antimicrobial concentration (Fig. 1). When macrophages were also present, bacterial eradication was faster than with cephalexin alone under two conditions; either if the initial bacterial inoculum was small (MOI 0.01) and with a therapeutic cephalexin concentration of 1xMIC (Fig. 1a), or if the initial bacterial inoculum was larger (MOI 0.1 and 1) and a cephalexin concentration much higher i.e. 16xMIC (Fig. 1b, c). Under these conditions, bacterial counts fell below the limit of quantification (LOQ) earlier with macrophages than without macrophages. On the contrary, with the highest tested inoculum ( $10^7$  CFU/mL, MOI 10, Fig. 1d), higher bacterial counts were obtained in the presence of macrophages at 9 h and 12 h post-infection than without macrophages.

### Phagocytosis of *S. aureus* by macrophages

We then explored if the saturable bacteriostatic effect of macrophages on extracellular bacteria observed at high bacterial density could be associated with an altered phagocytic capacity of the macrophages (Fig. 2). After flow cytometry analysis of GFP expression in infected macrophages (Fig. 2a, b), the phagocytosis index,  $I_{\text{phag}}$ , was used to quantify and analyse the phagocytic capacity of macrophages with or without cephalexin (Fig. 2c-f).

Without cephalexin, the phagocytosis of *S. aureus* by macrophages increased significantly with time and with the initial bacterial inoculum size (Fig. 2c) (ANOVA  $p < 0.001$ ). With the largest inoculum sizes (MOI 1 and 10), 72 to 84% of the macrophages at 3 h post-infection and 89 to 97% of the macrophages at 6 h post-infection contained phagocytosed bacteria (Fig. 2c). These results suggested that the phagocytosis capacity of macrophages could be rapidly saturated at high MOI. In addition, the macrophages, whose concentrations diminished with time due to intrinsic mortality within our test-system, were gradually being challenged by an increasing number of bacteria (due to the observed natural bacterial growth under the test conditions), thereby increasing the ratio of bacteria/macrophages during the experiment. For smaller bacterial inoculum sizes (MOI 0.01 and 0.1),



the proportion of phagocytosing macrophages increased slowly over time and was related to the growing bacterial population in the culture medium.

In the presence of cephalixin, the phagocytosis ratio gradually increased, reaching maximum values between 3 h and 6 h which were similar to those obtained without cephalixin (Fig. 2d-f). The ratio then decreased and all phagocytosis ratios were significantly lower with than

without cephalixin for all tested MOI at later times despite a less marked effect for MIC16 at MOI 10 (Fig. 2d-f).

#### Killing of *S. aureus* by macrophages

In addition to the ability of macrophages to phagocytize bacteria, we assessed their ability to kill bacteria by calculating the proportion of dying *S. aureus* isolated from macrophages over the initial proportion at 0 h

(Macrophage Associated bacterial death, Fig. 3) for all the conditions excepted MOI 0.01 because the number of phagocytised bacteria was too low and could not be accurately analysed.

Overall, the mortality of macrophage associated *S. aureus* without cephalixin varied significantly with time and with inoculum size (ANOVA,  $p < 0.001$  and  $p < 0.01$  respectively, 0 MIC on Fig. 3a-c). The mortality of bacteria was relatively constant over time for the smallest tested MOI (0 MIC in Fig. 3a). In contrast, the mortality of bacteria isolated from macrophages continually diminished with time for MOI 1 and 10, reflecting both the death of macrophages and a saturation of their killing capacity (0 MIC in Fig. 3b-c). Overall, bacterial killing was higher with MOI 0.1 (ratio of dying bacteria of 0.89), than with MOI 1 and 10 (0.74 and 0.76), revealing a better efficiency of macrophages to kill bacteria when MOI was low.

In the presence of cephalixin, macrophages retained their ability to kill bacteria, as demonstrated by the significantly higher values of the mortality of bacteria recovered after lysis of macrophages with cephalixin than without ( $p = 0.001$  for MOI 0.1,  $p < 0.001$  for MOI 1 and 10). The preserving effect of cephalixin was observed under all tested conditions including the highest MOI (Fig. 3c).

### Macrophage viability in the tripartite model

Since we were working with a static model with no input of fresh live macrophages, we also investigated the mortality rate of macrophages exposed to *S. aureus* and cephalixin. Using flow cytometry analysis of propidium-iodide (PI) staining of macrophages (Fig. 4a, b), we calculated a macrophage mortality rate (Macrophage death, Fig. 4c-e). In the absence of cephalixin, macrophage mortality increased significantly (ANOVA,  $p < 0.001$ ) with bacterial inoculum size and with time. With the smallest MOI (0.01), the mortality rate remained limited (below 50%) and close to the basal mortality observed in the absence of bacteria (data not shown). In contrast, with the largest inoculum size (MOI 10), the mortality rate of macrophages was around 70% as early as 6 h

post-infection with an estimated ratio of bacteria to macrophage around 350 at this time point (Fig. 4c, e). This mortality reached 80% at 12 h (Fig. 4e). A similar profile of macrophage death was also observed with the lower initial MOI of 1 (Fig. 4c). The high mortality rates observed with MOI 1 and 10 could potentially partly explain the limited bacteriostatic effect of macrophages observed with the largest inoculum size at the latest time-points (Fig. 1d).

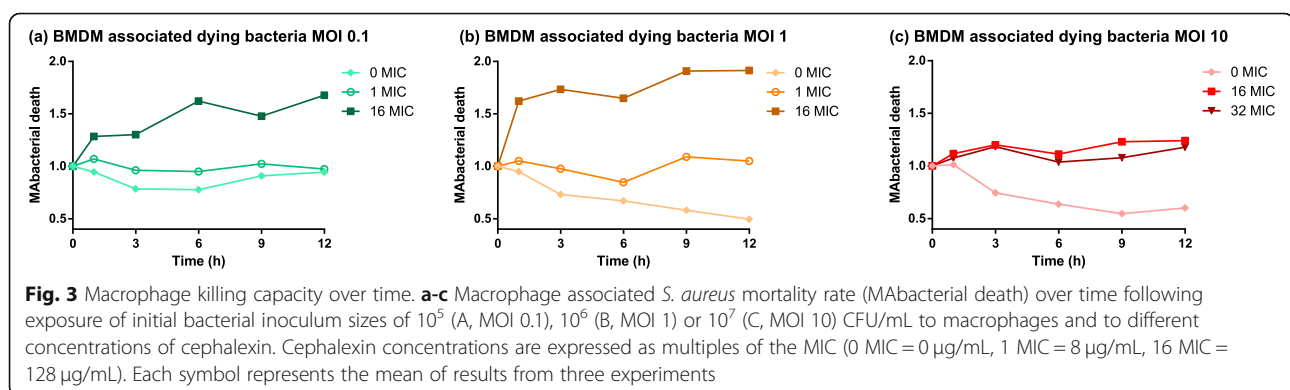
When cephalixin was added to the cultures, macrophage mortality never exceeded 50% irrespective of the initial inoculum sizes and cephalixin concentrations (Fig. 4d, e), and was significantly lower than in the absence of cephalixin for the highest inoculum sizes (MOI 1 and 10) (Fig. 4e, ANOVA  $p < 0.001$ ). Interestingly, the mortality rate decreased after 6 h (Fig. 4d, e), potentially due to the control of extracellular bacteria by cephalixin.

### Discussion

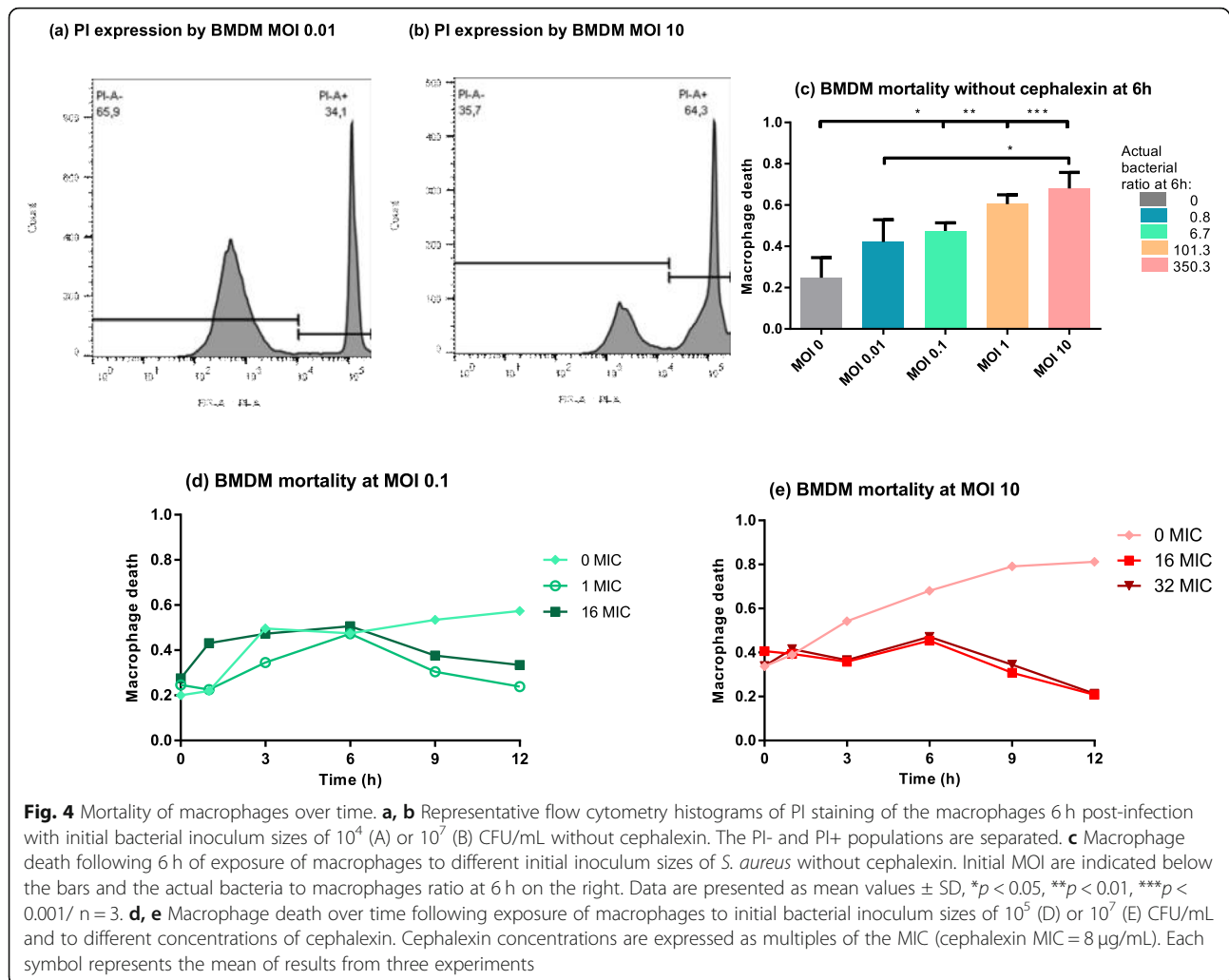
Our aim in the present study was to develop a dynamic in vitro model to explore the potential interaction of a first generation cephalosporin (cephalixin) and murine bone-marrow-derived macrophages on the killing of different inoculum sizes of *S. aureus* over time. We observed that, for low inoculums, macrophages and cephalixin could positively cooperate since the bactericidal effects of cephalixin were more rapid in the presence of macrophages, and both the viability of macrophages and their ability to kill bacteria were maintained or amplified by cephalixin.

The developed model enabled us to follow the time-course of the *S. aureus* population, by bacterial counting, and the time-course of the macrophage population, both quantitatively (cell counts) and qualitatively (cell death and phagocytosis) in the presence of cephalixin, by flow cytometry.

Interactions between bacteria, macrophages and antimicrobial drugs have already been investigated with macrophages from cell lines [9–14], with human macrophages derived from monocytes [15, 16] and in a mouse







peritonitis model studying whole cells in a peritoneal wash [19]. In the present study, we decided to use macrophages derived from murine bone marrow (BMDM), which have been validated to possess a stronger capacity for both proliferation and phagocytosis than peritoneal or splenic macrophages [20]. Moreover, contrary to previous in vitro studies in which the supernatant was discarded before exposing macrophages and their intracellular bacteria to drugs [9–16], we considered the dynamics of both intracellular and extracellular bacteria simultaneously over time. Indeed, we assume that these two populations are interrelated and that control of both populations is needed to cure an infection.

In this study, we showed that when the extracellular bacterial populations were reduced by cephalixin over time, the percentages of bacteria associated with macrophages (phagocytosis) was reduced but the viability of macrophages and their ability to kill bacteria increased. Concerning phagocytosis, we cannot exclude that, despite several rinses, we also considered some membrane

bound bacteria attached to the surface of macrophages in addition to the internalised ones [11] and that we slightly overestimated the phagocytosing capacity of macrophages.

By considering four different bacterial inoculum sizes, we observed that, without cephalixin, macrophages only were able to limit extracellular growth when the inoculums of *S. aureus* were small whereas they had no apparent beneficial effect facing to large bacterial populations. Flow cytometry analysis of the macrophages revealed that an increase of the bacterial population was associated with an increase of the phagocytic capacity of BMDM, in agreement with previous studies conducted with phagocytes other than BMDM on *Brucella abortus* [21] and on *S. aureus* [22–24]. In this study, we showed that saturation of phagocytosis occurred with an initial MOI around 1 and was associated with a decrease of intracellular bacterial killing ability. This lack of bactericidal efficacy on a large bacterial inoculum, previously reported for polymorphonuclear leukocytes [22], has

been attributed to the low dividing rates of bacteria in such high inoculums. We also showed that the increased phagocytosis by macrophages associated with large extracellular inoculums led to an increased rate of macrophage mortality. Thus, these observations confirmed the existence of a bacterial inoculum effect of *S. aureus* on macrophages activity and justified the association with an antibiotic to control infections associated with a high bacterial load.

With the addition of cephalexin in the tripartite model, the phagocytosis of *S. aureus* by macrophages initially increased, reaching a maximum effect between 3 h and 6 h, and then finally decreased. This decrease in the value of the phagocytic index could be due to the absence of new phagocytised bacteria related to the reduction of the extracellular bacterial population by cephalexin. Interestingly, both the viability of macrophages and their ability to kill intracellular bacteria over time were preserved when cephalexin was present. This preserving effect of cephalexin on the bactericidal activity of macrophages could be explained by the decreased number of extracellular bacteria which could be phagocytized and by the fact that exposure of *S. aureus* to cephalexin can lead to cephalexin concentration-dependent changes in the morphology of this bacterium [25]. The cross wall and cell wall swellings induced by cephalexin at concentrations close to the MIC may also facilitate bacterial lysis inside the resulting phagolysosome. The protoplast form of *S. aureus*, observed with higher cephalexin concentrations, might also explain the pronounced potentiation of the observed bactericidal effect with macrophages at cephalexin concentrations of 16 x MIC i.e. 128 µg/mL [25]. Overall, the presence of cephalexin, by resulting in a significant decline of the extracellular bacterial population and potentially making the bacteria easier to phagocytize and kill by the macrophages, seemed to have positively influenced the bactericidal activity of macrophages. However, this was not observed with the highest initial *S. aureus* inoculum size ( $10^7$  CFU/mL, MOI 10). Indeed, higher counts of viable bacteria were obtained at 9 h and 12 h with macrophages than without macrophages. This bursting point effect is likely due first to the low effect of cephalexin on non-growing bacteria and secondly, to bacterial overload and death of the macrophages with the consequent release of living bacteria, as already described by Jubrail et al. [23]. Indeed, staphylococci have the ability to survive in mammalian cells [22, 23, 26, 27] including macrophages where they can multiply within the phagosome or in the cytoplasm, protected from host defences and also against some extracellular antimicrobials [27, 28], as cephalexin that poorly penetrates the cell cytosol [17, 18].

Interaction between the antimicrobial and the immune system was previously described as being dependent on

the concentration and type of drug. Indeed, similarly to our results, the bactericidal activity of cephalexin on intracellular *Staphylococcus aureus* was shown to increase with antibiotic concentrations [12]. Other studies also confirmed that the bactericidal activity of macrophages on intracellular bacteria could be enhanced by cephalosporins [10, 19] highlighting that the presence or not of an intracellular accumulation of antibiotics alone is not a univocal indicator of intracellular activity [29]. However, the interaction between macrophages and antimicrobial drugs even in the same class seems to depend on the drug, as one study demonstrated that the bactericidal activity of macrophages was higher with cefodizime than with cefotaxime or cefoperazone [10]. Since the origins of these differences in the abilities of antimicrobial drugs to interact with immune cells are unclear, it implies that such interactions need to be specifically documented for each substance.

Finally, it has to be kept in mind that in vitro studies can never reflect the complex in vivo biological realities. In this respect, one major limit of our study was that the action of macrophages at late time points post-infection was reduced, due to the death of some macrophages. It would also be of particular interest to extend this model to neutrophils, which act secondarily to macrophages after being attracted at the site of infection. It would also be important to monitor the functions of cytokines and chemokines in the control of bacterial load.

## Conclusions

In conclusion, our study demonstrated that the interplay between bactericidal activity of cephalexin and macrophages was largely dependent on the bacterial inoculum size. The interaction between cephalexin and macrophages was beneficial for low inoculum sizes with an enhancement of the viability of macrophages and their ability to kill bacteria whereas with the highest inoculum, the addition of macrophages to cephalexin had a negative effect probably by enabling *S. aureus* to take refuge inside macrophages before being released. These results suggest that, in vivo, this cooperation between antimicrobial drug and macrophages could be of particular interest at the early stages of infection and at the end of antimicrobial treatment, i.e. situations often characterized by a low bacterial inoculum at the infectious site.

## Methods

### Bacterial strain, antimicrobial drug and MIC determination

A methicillin-susceptible *S. aureus* HG001 strain expressing green fluorescent protein (GFP) was used to detect living bacteria (generous gift from T Msadek, Pasteur Institute, Paris, 2014). GFP expression is controlled by a constitutive promoter *tufA* [30].

Cephalexin monohydrate with purity > 99% was purchased from ACS Dobfar (Tribiano, MI, Italy). Stock solutions of 10 mg/mL were filtered and stored at  $-20^{\circ}\text{C}$  for less than 3 months.

The Minimal Inhibitory Concentration (MIC) was determined by standard broth microdilution method both in MHB [31] following the CLSI guidelines and in cRPMI as it was the culture medium used for the characterization of bacteria-BMDM interactions.

#### Isolation and differentiation of murine bone-marrow-derived macrophages

Female, 9-week-old, C57BL/6J mice were obtained from Janvier Labs (Saint Berthevin, France). A total of 30 mice were used during this experiment. The experimental protocol was carried out in accordance with the recommendations of Directive 2010/63 UE on the protection of animals used for scientific purpose under the agreement n° 02560.01 for animal experimentation from the French Ministry of Agriculture with the supervision of the local Ethic Committee “Comité d'éthique de Pharmacologie Toxicologie de Toulouse Midi-Pyrénées n°86 (Toxcométhique)”. All bone marrows were surgically removed after humane euthanasia of anesthetised mice. Mice were anesthetised with an intraperitoneal injection of 10 mg of ketamine and euthanized with cervical dislocation when unconscious. Bone marrow cell suspensions were isolated by flushing femurs and tibias with RPMI1640. Cell aggregates were dissociated by gentle pipetting, filtered through a  $40\ \mu\text{m}$  filter and the erythroid cells were lysed using ACK (Ammonium-Chloride-Potassium) buffer. Cell differentiation into macrophages was induced by culturing bone-marrow precursors in the presence of colony stimulating factor 1 (CSF-1) produced by LADMAC cells (ATCC® CRL2420™). Briefly,  $2 \times 10^5$  LADMAC cells per mL were cultivated for 7 days in DMEM with 10% FCS. The supernatant was sampled on day 7, centrifuged and filtered. Bone marrow precursor cells were cultured with a medium composed of 30% LADMAC supernatant and 70% cRPMI. Cells were seeded at  $1.7 \times 10^5$  cells/mL on Petri plates and cultured at  $37^{\circ}\text{C}$  and 5%  $\text{CO}_2$ , for 6 days. They were then washed twice with cold Hanks' Balanced Salt solution (HBSS) and incubated with HBSS + EDTA 5 mM for 10 min at  $37^{\circ}\text{C}$ . Adherent cells considered to be murine Bone-Marrow-Derived Macrophages (BMDM) were harvested and washed twice with RPMI. BMDM were then plated on culture-treated 24-well plates at a density of  $5 \times 10^5$  cells in  $500\ \mu\text{l}$  of cRPMI and incubated overnight at  $37^{\circ}\text{C}$  in 5%  $\text{CO}_2$  to allow adherence. Macrophage phenotype and purity were confirmed by flow cytometry. Concentrations of cells other than macrophages, such as monocytes or dendritic cells, were below 5% in our experiments (Additional file 2).

#### Tripartite model

The tested GFP *S. aureus* strain was incubated aerobically overnight in MHB at  $37^{\circ}\text{C}$  and was diluted at 1:100 in RPMI1640 + 5% of  $56^{\circ}\text{C}$  heat-inactivated foetal calf serum just before each experiment. Bacteria were grown on orbital shaker to reach the exponential growing phase (200 rpm, 210 min,  $37^{\circ}\text{C}$ ), centrifuged (1600G, 10 min,  $20^{\circ}\text{C}$ ), washed twice and suspended in NaCl 0.9% to the desired inoculum size.

The experiments with macrophages were systematically conducted with  $5 \times 10^5$  adherent BMDM per well, prepared as described above, and the *S. aureus* inoculum sizes were adjusted to obtain an initial multiplicity of infection (MOI) i.e. ratios of bacteria to macrophages of 0.01 (0.01 bacteria for 1 macrophage), 0.1, 1 and 10. The corresponding bacterial inoculum sizes were  $10^4$ ,  $10^5$ ,  $10^6$  and  $10^7$  colony-forming units (CFU)/mL.

Fifty microliters of a solution of cephalexin (or RMPI for controls) were added simultaneously with bacteria to expose the tested *S. aureus* strain to various multiples of the MIC. The concentrations of the added solutions of cephalexin were 80, 1280 and 2560  $\mu\text{g}/\text{mL}$  to obtain final concentrations equal to 1, 16 and 32 MIC respectively. The plates were incubated at  $37^{\circ}\text{C}$  with 5%  $\text{CO}_2$  until sampling.

#### Time-kill of the extracellular bacterial population

The culture supernatants in the tripartite model were harvested after 0, 1, 3, 6, 9 and 12 h, and three replicates of the same condition (bacterial inoculum size, antibiotic concentration and presence or absence of macrophages) were pooled. Bacterial counts were determined by plating serial 10-fold dilutions from  $100\ \mu\text{L}$  aliquots in triplicate on tryptic soy agar supplemented with magnesium sulphate and activated charcoal (to prevent antimicrobial drug carry-over effects). The limit of quantification (LOQ) was 10 CFU/mL and below this, the bacteria were considered eradicated. Bactericidal activity was defined as a 99.9% reduction of the initial bacterial inoculum size. Each experiment was repeated independently at least 3 times.

The ratio of the counts of extracellular GFP-*S. aureus* at 3, 6 or 12 h divided by the initial bacterial inoculum size were calculated for the different cephalexin concentrations tested in the presence or not of macrophages.

#### Assessment of macrophage viability

##### After exposure to cephalexin alone

We first investigated the potential cytotoxicity of cephalexin on macrophages by culturing macrophages for 12 h with cephalexin concentrations ranging from 0 to 128  $\mu\text{g}/\text{mL}$ . The cytotoxic effect of cephalexin on macrophages was quantified. Then, the proportion of surviving macrophages was compared to control (absence of



cephalexin) for each condition. All calculations are described in detail in the S1 Text.

#### *In the tripartite model*

After removal of the supernatant in the tripartite model to count extracellular bacteria, the macrophages were washed with 500  $\mu\text{L}$  of HBSS. Five hundred microliters of HBSS containing EDTA 5 mM were then added to each well and after orbital shaking at 37 °C, 100 g for 10 min, the macrophages were harvested and washed again with 600  $\mu\text{L}$  of HBSS. Four hundred microliters of this macrophage suspension were then used to assess macrophage viability and phagocytosis. Viability was assessed by labelling the macrophages with propidium-iodide (PI, Biolegend, Ozyme, France) in order to detect the necrotic cells and distinguish them from viable cells counting cells in 100  $\mu\text{L}$  of the suspension using flow cytometry. The proportion of dying macrophages over the total number of macrophages was calculated for each cephalaxin concentration and each bacterial inoculum.

#### Assessment of phagocytosis

Phagocytosis of *S. aureus* was assessed by quantifying, by flow cytometry, the GFP expression of the intracellular and membrane bound bacteria associated with the macrophages harvested from the tripartite model.

The phagocytosis of *S. aureus* by macrophages at different times post-infection was quantitatively expressed as the proportion of macrophages associated with bacteria over the total number of macrophages (phagocytosis index). Macrophages that had engulfed bacteria included living and dying macrophages containing living and dead bacteria (no longer expressing GFP [22]). The detailed calculation is provided in S1.

#### Assessment of bacterial mortality after phagocytosis

Two hundred microliters of the harvested macrophage suspension in the tripartite model was lysed with ultrafiltrated water for 15 min and the released bacteria were washed and stained with PI in order to assess their viability by flow cytometry. Ten thousand bacteria were counted with flow cytometry and the proportion of dying bacteria over the proportion of initial dying bacteria at 0 h after infection was calculated for each condition.

#### Flow cytometry analysis

Macrophages and bacteria cell numbers were determined by a flow cytometry absolute counting system (MACSQuant Analyzer, Miltenyi Biotec, Germany). A constant volume of 100  $\mu\text{L}$  was used for each analysis. Data were analysed with FlowJo software (Tree Star, USA).

#### Statistical analysis

All data are expressed as mean  $\pm$  S.D. unless otherwise specified and all experiments were repeated independently at least 3 times. Statistical comparisons of the calculated indexes were based on a repeated-measures 2-ways ANOVA followed by Tukey tests. A *P* value less than 0.05 was considered significant. All statistical analyses were performed using R software (version 3.1.2).

#### Supplementary Information

The online version contains supplementary material available at <https://doi.org/10.1186/s12917-021-02746-8>.

**Additional file 1 S1 Text.** Detailed calculation of indexes.

**Additional file 2 S2 Figure.**

#### Abbreviations

*S. aureus*: *Staphylococcus aureus*; PD: Pharmacodynamic; MIC: Minimum inhibitory concentration; ANOVA: Analysis of variance; GFP: Green fluorescent protein; MHB: Mueller Hinton broth; RPMI: Roswell Park Memorial Institute; cRPMI: Roswell Park Memorial Institute 1640 media with Hepes and Glutamax I + 10% 56 °C heat-inactivated foetal calf serum; MOI: Multiplicity of infection; CFU: Colony forming unit; LOQ: Limit of quantification;  $I_{\text{phag}}$ : phagocytosis index; PI: Propidium-iodide; BMDM: Murine Bone-Marrow-Derived Macrophages; ACK: Ammonium-Chloride-Potassium; CSF-1: Colony stimulating factor 1; HBSS: Hanks' Balanced Salt solution; EDTA: Ethylenediaminetetraacetic acid

#### Acknowledgments

We thank Tarek Msadek for supplying the bacterial strains, Béatrice Roques, Edwige Tapie and Emmanuelle Totain for experimental assistance.

#### Authors' contributions

EL, SB, PLT, CZ, AF and ABM conceived and designed the experiments. EL, AF and SB performed the experiments. EL, SB, AF, PLT and ABM analysed the data. EL, AF, CZ, PLT, ABM and SB wrote the paper. All authors have read and approved the manuscript.

#### Funding

This work was supported by CEVA-Sogeval (France). The funding body had no involvement in study design; in the collection, analysis and interpretation of data; in the writing of the report; nor in the decision to submit the article for publication.

#### Availability of data and materials

The datasets used and analysed during the current study are available from the corresponding author on reasonable request.

#### Ethics approval and consent to participate

Experiments were conducted in strict accordance with the Federation of European Laboratory Animal Science Association guidelines and under the agreement n°02560.01 for animal experimentation from the French Ministry of Agriculture under the supervision of the local animal welfare body "Comité d'éthique de Pharmacologie Toxicologie de Toulouse Midi-Pyrénées n°86 (Toxcométhique)".

#### Consent for publication

Not applicable.

#### Competing interests

CZ works for CEVA Sogeval. None of the other authors has a financial or personal relationship with other people or organizations that could inappropriately influence or bias the contents of this paper.

#### Author details

<sup>1</sup>InTheRes, Université de Toulouse, INRAE, ENVT, 23 chemin des Capelles, BP 87614, 31 076 Toulouse Cedex 3, France. <sup>2</sup>Ceva Santé Animale, Laval

Campus, Allée de la communication, 53950 Louverné, France. <sup>3</sup>The Royal Veterinary College, Hawkshead Campus, Hatfield, Herts AL9 7TA, UK.

Received: 27 April 2020 Accepted: 1 January 2021

Published online: 07 January 2021

## References

- Foster TJ. Immune evasion by staphylococci. *Nat Rev Microbiol*. 2005 Dec; 3(12):948–58.
- Taponen S, Pyörälä S. Coagulase-negative staphylococci as cause of bovine mastitis- not so different from *Staphylococcus aureus*? *Vet Microbiol*. 2009 Feb 16;134(1–2):29–36.
- Bannerman DD, Paape MJ, Lee J-W, Zhao X, Hope JC, Rainard P. *Escherichia coli* and *Staphylococcus aureus* elicit differential innate immune responses following intramammary infection. *Clin Diagn Lab Immunol*. 2004 May;11(3): 463–72.
- Reddy PN, Srirama K, Dirisala VR. An Update on Clinical Burden, Diagnostic Tools, and Therapeutic Options of *Staphylococcus aureus*. *Infect Dis (Auckl)*. 2017;10:1179916117703999.
- Walther B, Tedin K, Lübke-Becker A. Multidrug-resistant opportunistic pathogens challenging veterinary infection control. *Vet Microbiol*. 2017 Feb; 200:71–8.
- Drusano GL. Pharmacokinetics and pharmacodynamics of antimicrobials. *Clin Infect Dis*. 2007;45(Suppl 1):S89–95.
- Murphy KP. Innate immunity: the first lines of defenses. In: Janeway's immunobiology. 8th edition. New York: Garland science; 2012. p. 888p.
- Haniffa M, Bigley V, Collin M. Human mononuclear phagocyte system reunited. *Semin Cell Dev Biol*. 2015 May;41:59–69.
- Judy BM, Whitlock GC, Torres AG, Estes DM. Comparison of the in vitro and in vivo susceptibilities of *Burkholderia mallei* to Ceftazidime and levofloxacin. *BMC Microbiol*. 2009 May 9;9:88.
- Nomura S, Nagayama A. In vitro and in vivo enhancement of bactericidal activity of phagocytes against *Klebsiella pneumoniae* treated with subminimal inhibitory concentrations of cefodizime. *Chemotherapy*. 1995; 41(3):178–86.
- Barcia-Macay M, Seral C, Mingeot-Leclercq M-P, Tulkens PM, Van Bambeke F. Pharmacodynamic evaluation of the intracellular activities of antibiotics against *Staphylococcus aureus* in a model of THP-1 macrophages. *Antimicrob Agents Chemother*. 2006;50(3):841–51.
- Lemaire S, Glupczynski Y, Duval V, Joris B, Tulkens PM, Van Bambeke F. Activities of ceftobiprole and other cephalosporins against extracellular and intracellular (THP-1 macrophages and keratinocytes) forms of methicillin-susceptible and methicillin-resistant *Staphylococcus aureus*. *Antimicrob Agents Chemother*. 2009;53(6):2289–97.
- Lemaire S, Olivier A, Van Bambeke F, Tulkens PM, Appelbaum PC, Glupczynski Y. Restoration of susceptibility of intracellular methicillin-resistant *Staphylococcus aureus* to beta-lactams: comparison of strains, cells, and antibiotics. *Antimicrob Agents Chemother*. 2008;52(8):2797–805.
- Nguyen HA, Denis O, Vergison A, Theunis A, Tulkens PM, Struelens MJ, et al. Intracellular activity of antibiotics in a model of human THP-1 macrophages infected by a *Staphylococcus aureus* small-colony variant strain isolated from a cystic fibrosis patient: pharmacodynamic evaluation and comparison with isogenic normal-phenotype and revertant strains. *Antimicrob Agents Chemother*. 2009 Apr;53(4):1434–42.
- Baltch AL, Ritz WJ, Bopp LH, Michelsen P, Smith RP. Activities of daptomycin and comparative antimicrobials, singly and in combination, against extracellular and intracellular *Staphylococcus aureus* and its stable small-colony variant in human monocyte-derived macrophages and in broth. *Antimicrob Agents Chemother*. 2008 May;52(5):1829–33.
- Baltch AL, Ritz WJ, Bopp LH, Michelsen PB, Smith RP. Antimicrobial activities of daptomycin, vancomycin, and oxacillin in human monocytes and of daptomycin in combination with gentamicin and/or rifampin in human monocytes and in broth against *Staphylococcus aureus*. *Antimicrob Agents Chemother*. 2007 Apr;51(4):1559–62.
- Brown KN, Percival A. Penetration of antimicrobials into tissue culture cells and leucocytes. *Scand J Infect Dis Suppl*. 1978;14:251–60.
- Johnson JD, Hand WL, Francis JB, King-Thompson N, Corwin RW. Antibiotic uptake by alveolar macrophages. *J Lab Clin Med*. 1980;95(3):429–39.
- Sandberg A, Hessler JHR, Skov RL, Blom J, Frimodt-Møller N. Intracellular activity of antibiotics against *Staphylococcus aureus* in a mouse peritonitis model. *Antimicrob Agents Chemother*. 2009 May;53(5):1874–83.
- Wang C, Yu X, Cao Q, Wang Y, Zheng G, Tan TK, et al. Characterization of murine macrophages from bone marrow, spleen and peritoneum. *BMC Immunol*. 2013 Feb 5;14:6.
- Murphy E, Robertson GT, Parent M, Hagius SD, Roop RM, Elzer PH, et al. Major histocompatibility complex class I and II expression on macrophages containing a virulent strain of *Brucella abortus* measured using green fluorescent protein-expressing brucellae and flow cytometry. *FEMS Immunol Med Microbiol*. 2002 Jul 12;33(3):191–200.
- Schwartz J, Leidal KG, Femling JK, Weiss JP, Nauseef WM. Neutrophil bleaching of GFP-expressing staphylococci: probing the intraphagosomal fate of individual bacteria. *J Immunol*. 2009 Aug 15;183(4):2632–41.
- Jubrail J, Morris P, Bewley MA, Stoneham S, Johnston SA, Foster SJ, et al. Inability to sustain intraphagosomal killing of *Staphylococcus aureus* predisposes to bacterial persistence in macrophages. *Cell Microbiol*. 2016 Jan;18(1):80–96.
- Finkensieper A, Bekhite MM, Fischer H, Nitz S, Figulla H-R, Müller JP, et al. Antibacterial capacity of differentiated murine embryonic stem cells during defined in vitro inflammatory conditions. *Stem Cells Dev*. 2013 Jul 15;22(14): 1977–90.
- Nishino T, Nakazawa S. Morphological changes in *Staphylococcus aureus* and *Escherichia coli* exposed to cephalixin. *Jpn J Microbiol*. 1972 Mar;16(2): 83–94.
- Pang YY, Schwartz J, Thoendel M, Ackermann LW, Horswill AR, Nauseef WM. Agr-dependent interactions of *Staphylococcus aureus* USA300 with human polymorphonuclear neutrophils. *J Innate Immun*. 2010;2(6):546–59.
- Kahl BC, Goulian M, van Wamel W, Herrmann M, Simon SM, Kaplan G, et al. *Staphylococcus aureus* RN6390 replicates and induces apoptosis in a pulmonary epithelial cell line. *Infect Immun*. 2000 Sep;68(9):5385–92.
- Fraunholz M, Sinha B. Intracellular *Staphylococcus aureus*: live-in and let die. *Front Cell Infect Microbiol*. 2012;2:43.
- Van Bambeke F, Barcia-Macay M, Lemaire S, Tulkens PM. Cellular pharmacodynamics and pharmacokinetics of antibiotics: current views and perspectives. *Curr Opin Drug Discov Devel*. 2006 Mar;9(2):218–30.
- Biswas R, Voggu L, Simon UK, Hentschel P, Thumm G, Götz F. Activity of the major staphylococcal autolysin Atl. *FEMS Microbiol Lett*. 2006 Jun;259(2): 260–8.
- Clinical and Laboratory Standards Institute. *Methods for Dilution Antimicrobial Susceptibility Tests for Bacteria That Grow Aerobically*; Approved Standard-Ninth Edition. 2012.

## Publisher's Note

Springer Nature remains neutral with regard to jurisdictional claims in published maps and institutional affiliations.

**Ready to submit your research? Choose BMC and benefit from:**

- fast, convenient online submission
- thorough peer review by experienced researchers in your field
- rapid publication on acceptance
- support for research data, including large and complex data types
- gold Open Access which fosters wider collaboration and increased citations
- maximum visibility for your research: over 100M website views per year

At BMC, research is always in progress.

Learn more [biomedcentral.com/submissions](https://www.biomedcentral.com/submissions)

