

Case report

Open Access

From cat scratch disease to endocarditis, the possible natural history of *Bartonella henselae* infection

Frédérique Gouriet¹, Hubert Lepidi¹, Gilbert Habib², Frédéric Collart³ and Didier Raoult*¹

Address: ¹Unité des Rickettsies, CNRS UMR 6020, IFR 48, Faculté de Médecine, Université de la Méditerranée, 27 Boulevard Jean Moulin, 13385 Marseille cedex 05, France, ²Service de Cardiologie B, Centre Hospitalier Universitaire de La Timone, Marseille, 247, rue Saint-Pierre, Marseille 13385 Cedex 5, France and ³Service de Chirurgie Cardiaque, Centre Hospitalier Universitaire de La Timone, 247, rue Saint-Pierre, Marseille 13385 Cedex 5, France

Email: Frédérique Gouriet - frederique.gouriet@medecine.univ-mrs.fr; Hubert Lepidi - hubert.lepidi@medecine.univ-mrs.fr; Gilbert Habib - gilbert.habib@ap-hm.fr; Frédéric Collart - frederic.collart@mail.ap-hm.fr; Didier Raoult* - didier.raoult@medecine.univ-mrs.fr

* Corresponding author

Published: 18 April 2007

Received: 25 September 2006

BMC Infectious Diseases 2007, 7:30 doi:10.1186/1471-2334-7-30

Accepted: 18 April 2007

This article is available from: <http://www.biomedcentral.com/1471-2334/7/30>

© 2007 Gouriet et al; licensee BioMed Central Ltd.

This is an Open Access article distributed under the terms of the Creative Commons Attribution License (<http://creativecommons.org/licenses/by/2.0>), which permits unrestricted use, distribution, and reproduction in any medium, provided the original work is properly cited.

Abstract

Background: Most patients with infectious endocarditis (IE) due to *Bartonella henselae* have a history of exposure to cats and pre-existing heart valve lesions. To date, none of the reported patients have had a history of typical cat scratch disease (CSD) which is also a manifestation of infection with *B. henselae*.

Case presentation: Here we report the case of a patient who had CSD and six months later developed IE of the mitral valve caused by *B. henselae*.

Conclusion: Based on this unique case, we speculate that CSD represents the primary-infection of *B. henselae* and that IE follows in patients with heart valve lesions.

Background

Bartonella spp. are linked to the host immune system, infection with the same *Bartonella* species (e.g., *B. henselae*) can result in focal suppurative reaction (cat scratch disease in immunocompetent patients), a multifocal angioproliferative response (bacillary angiomatosis in immunocompromised patients), an increased immune response without evidence of bacteria in patient tissues (meningoencephalitis), or endovascular multiplication of the bacteria (endocarditis). Of the 19 species within the genus *Bartonella* [1], seven are known to cause infective endocarditis (IE) in people: *B. quintana* [2], *B. henselae* [3], *B. elizabethae* [4], *B. vinsonii* subsp. *berkhoffii* [5], *B. vinsonii* subsp. *arupensis* [6], *B. kohlerae* [7] and *B. alsatica* [8]. These zoonotic agents cause 1 to 15% of all cases of IE [3,9,10]

and cannot be detected using routine blood cultures due to the fastidious nature of the bacteria. The most widely used method for the laboratory diagnosis of infection with *Bartonella* sp. is serology. Enzyme immunoassay (EIA) has been described [11] but indirect immunofluorescence antibody assay (IFA) is the reference technique [12], despite cross-reactivity among *Bartonella* spp. [13]. Our laboratory uses two IFA titers in the diagnosis of *Bartonella* infections. In conjunction with a compatible medical history, an IgG titer $\geq 1:50$ to *B. henselae* suggests a diagnosis of acute infections such as cat scratch disease (CSD), while IgG $\geq 1:800$ to either *B. henselae* or *B. quintana* suggests a diagnosis of endocarditis [14,15]. Western blotting with adsorbed sera enables us to differentiate between infections with *B. henselae* and *B. quintana* [13].

Currently, the literature describes *B. henselae* as an agent causing a typical endocarditis which is easily diagnosed using the Duke criteria [3,16] and usually with vegetations that can be detected by echocardiography. Patients usually have a pre-existing cardiac valve lesion and although they are exposed to cats, they usually do not have a history of CSD. Here we report a patient who suffered from CSD and subsequently developed *B. henselae* IE.

Case presentation

Case

In May 2005, a 43-year-old man was admitted to the hospital with mitral regurgitation. In 1981, he had been in a car crash and developed a destructive nosocomial *Staphylococcus aureus* endocarditis of the mitral valve. A bioprosthesis was inserted which failed in 1988 and was replaced. In May 2005, regurgitation through the valve was once again detected and the patient was hospitalized for a further valve replacement. The patient was afebrile and had a systolic murmur over the mitral area. He had no leukocytosis (leukocyte count was $3.63 \times 10^9/l$ with 50.2% neutrophils). The low neutrophil count corrected itself spontaneously. The erythrocyte sedimentation rate (16/43 mm) and C-reactive protein (<5 mg/l) was normal and hepatic enzymes were elevated (ALT: 69 IU/L; normal ≤ 40 IU/L). Three routine blood cultures were negative (Bactec, Becton Dickinson, Sparus, Maryland) and no rheumatoid factor was detected. Transthoracic echocardiography revealed mitral insufficiency but there were no vegetations and IE was not considered as a possible diagnosis. However, no transesophageal echocardiography was performed. Histology of the prosthetic valve removed at surgery using reported methods [17,18], revealed an IE with a vegetation containing micro-organisms that stained with Warthin-Starry and Giemsa [19] (Figure 1). Standard cultures of cardiac valve tissue remained sterile, but with cell-cultures (human endothelial cell) a strain of *B. henselae* was isolated in 3 weeks [20]. Also, DNA of *B. henselae* was demonstrated to be present in the valve by PCR and sequencing with primers for the eubacterial 16S rRNA gene [21] and *Bartonella* ITS region [3]. Genotyping of the *B. henselae* strain was carried out using the multi-spacer typing (MST) method as previously described [22]. Sequences obtained from the nine studied spacers classified the strain within MST genotype five, previously described to contain cat isolates from various countries including France, Germany and USA [22]. Serum tested retrospectively was found to contain antibodies to *B. henselae* and *B. quintana* at an IgG titer of 1:200 [14], which is not suggestive of IE. However, western blotting was positive for antibodies to *B. henselae* and *B. quintana* and showed a reactivity pattern typical for endocarditis [13] (Figure 2). Immunoblotting with a serum sample adsorbed with *B. henselae* confirmed the diagnosis of *B. henselae* IE.

The diagnosis of IE was made retrospectively based on the combination of histology of the cardiac valve lesions, culture of *Bartonella* from the valve, presence of a predisposing heart condition, and serological evidence of *Bartonella* infection. Without the histology of the valve the patient would not have had a positive score using the Duke criteria; he would only have had 2 minor criteria. After surgery, the patient recovered rapidly with routine post-surgical amoxicillin administration for 4 days, followed by gentamycin for 15 days and doxycycline for 1 month [23].

Retrospectively, it was found that six months before the patient had had suspected lymphoma of an inguinal lymph node. Histology of the node, however, showed a necrotizing lymphadenitis suggested of CSD. Numerous microabscesses containing fragmented neutrophils were observed in homogenous necrotic areas. These necrotic regions were surrounded by a ring of macrophages and epithelioid histiocytes to form stellate inflammatory granulomas (Figure 1). No bacteria were detected by immunohistochemical examination or Warthin-Starry staining. Unfortunately, the lymph node sample was not available for PCR analysis to confirm the diagnosis of CSD.

The patient did not own a cat but reported a single contact with a stray cat that scratched him one month before the enlargement of the inguinal lymph node. We report the development of IE after a likely episode of CSD in a patient with a mechanical mitral cardiac valve. In previous studies [16], *B. henselae* was described in patients who have regular contact with cats and with pre-existing valvulopathies [24,25], but to the best of our knowledge the progression of CSD to IE has not previously been reported.

Discussion

We describe here the development of IE six months after CSD in a patient with a known valvulopathy. The diagnosis of CSD was histological as blood collected at the time was not available for serological or DNA testing. Serology in May 2005, however, revealed a titer of 1:200 against the *Bartonella* antigens, which is intermediate between the titer we use to diagnose CSD and that for IE [26]. Most patients with *Bartonella* IE have high titers >800 [14]. However, in our case the western-blotting showed an endocarditis profile (Figure 2) and cross adsorption confirmed the diagnosis of *B. henselae* infection [13]. Also, *B. henselae* genotype five was identified by both PCR and culture of the cardiac valve. The possibility of chronic bacteremia due to *B. henselae* has been reported in a patient during the natural course of CSD [27]. The isolation of the *Bartonella* species is difficult, especially in immunocompetent patients, and cultures of clinical samples are most often sterile. The best specimens for PCR amplification are cardiac valve biopsies, but these are seldom available.

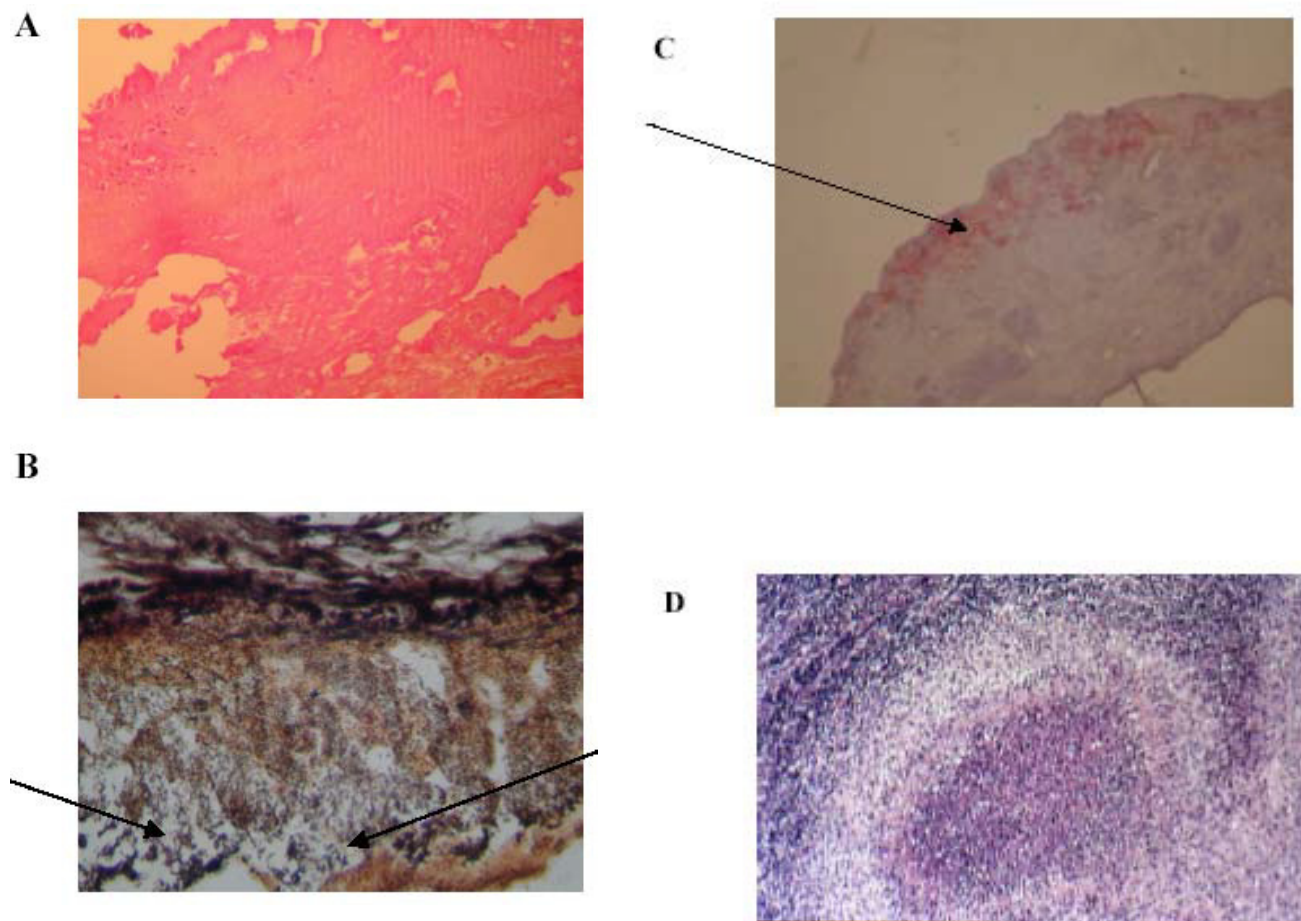


Figure 1

Valve of our patient with *B. henselae* endocarditis. Resected valve with *B. henselae* infection showing large and non-inflammatory vegetation on the valvular surface (A, hematoxylin-eosin, original magnification $\times 100$). The diagnosis of vegetation was made by the presence of fibrinous material with numerous darkly stained bacilli (arrows in Figure 1B) consistent with *Bartonella*, organized in numerous clusters (B, Warthin-Starry silver staining, original magnification $\times 400$). The bacteria (arrows in Figure 1C) are detected by immunohistochemical analysis in an extracellular location inside the valvular vegetation (C, polyclonal antibody anti-*B. henselae* with hematoxylin counterstain, original magnification $\times 200$). Resected lymph node showed a necrotizing lymphadenitis. Numerous microabscesses composed of fragmented neutrophils were observed in homogenous necrotic areas. Necrotic regions were surrounded by a ring of macrophages and epithelioid histiocytes to form stellate inflammatory granulomas consistent with cat-scratch disease (D, hematoxylin-eosin, original magnification $\times 100$).

Testing can be performed even following antibiotic therapy. Six months after our patient likely suffered from CSD, we diagnosed asymptomatic IE with degenerative lesions in the valve but no vegetations were found echocardiographically.

Therefore, the natural history of *B. henselae* may resemble that of Q fever [28]. As with *B. henselae*, the majority of patients with Q fever IE have pre-existing valve lesions [16]. Between 30 and 50% of patients with cardiac valve lesions that have primary infections with *Coxiella burnetii* (symptomatic or asymptomatic) develop IE within 2 years [29]. However, the delay between bacteremia and IE

ranges from months to years and we now recommend that the presence of valve lesions be carefully investigated in patients with Q fever as this enables early treatment [30].

In various studies, the seroprevalences of antibodies to *B. henselae* in healthy people have ranged from 3 to 6% [31]. This suggests that many primary infections with *B. henselae* are asymptomatic [32]. Asymptomatic primary infections may result in IE as well. We speculate that following exposure to *B. henselae*, a patient may develop bacteremia with or without clinical signs of typical CSD [27]. In patients with valvular lesions this may result in IE. In our patient, a diagnosis of IE was not considered as the condi-

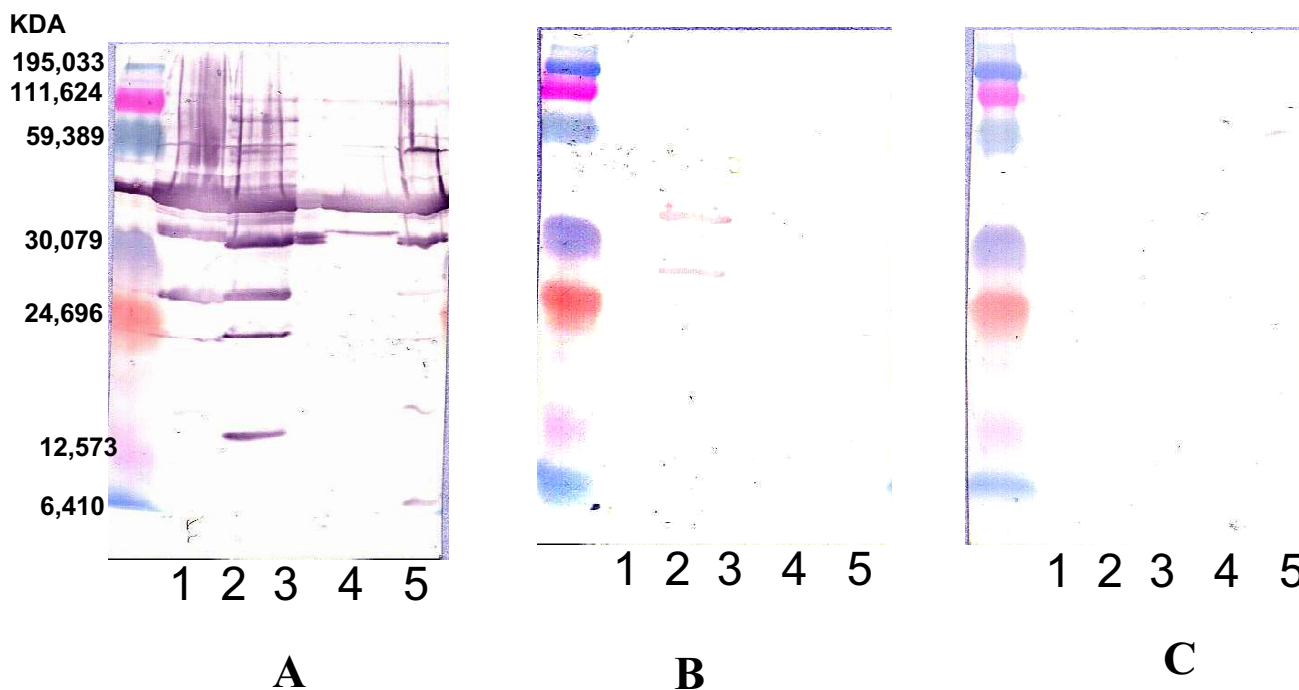


Figure 2

Western blotting using *Bartonella* antigen of a patient with IE. Western blotting was performed with the first serum sample from May 2005 at a 1:200 dilution. Molecular masses (in kilodaltons) are given on the left. A through C: Serum was analyzed by using *B. quintana* (lane 1), *B. henselae* (lane 2), *B. elizabethae* (lane 3), *B. vinsonii* subsp. *Berkhoffii* (lane 4) and *B. alsatica* (lane 5) antigens. (A) Untreated serum. (B) *B. quintana*-adsorbed serum. Antibodies to the *B. henselae* remained. (C) *B. henselae*-adsorbed serum. All antibodies were removed.

tion was asymptomatic and it may have been several months before typical clinical signs would have become apparent (Figure 3). If our hypothesis is confirmed, it should become routine for patients with CSD to be examined for valve lesions with echocardiography. While antibiotic treatment is not currently recommended for patients with CSD [23], treatment might be indicated in patients who have valve lesions as this might prevent IE as has been reported for patients with Q fever [29]. IE is a life threatening disease and it is critical that a diagnosis be made as early as possible. We suggest that patients with CSD and valvular heart disease should be tested within a year for serological, blood culture or DNA detection of continued *B. henselae* infection [1]. If these tests are positive, early antibiotic treatment may be indicated to prevent IE.

Conclusion

This single case report provides further insight into the natural history of *B. henselae* IE. To our knowledge this is the first report of the progression of probable CSD to *B. henselae* IE in a patient with a pre-existing cardiac valve lesion and only a single contact with a cat. It shows that contact with a cat and CSD are risk factors for IE in

patients with cardiac valve disease. Our findings suggest echocardiography may be indicated in patients with CSD. Follow-up of patients with cardiac valve lesions that develop CSD may enable the early treatment of *B. henselae* IE.

Competing interests

The author(s) declare that they have no competing interests.

Authors' contributions

FG participated in the conception of the study, participated in its coordination, drafted the paper and took care of the hospitalized patient. HL performed anatomopathology and immunohistochemistry. GH took charge of the patient and followed the patient. FC carried out the surgery. DR conceived the study, coordinated it, finalized the paper and followed the patient after hospitalization. All authors read and approved the final manuscript.

Acknowledgements

We thank Mireille Papadacci and Jean-Paul Casalta for help in collecting data. We thank Pat Kelly for reviewing the manuscript. Written consent was obtained from the patient for publication of the study. We thank Wenjun Li and Pierre-Edouard Fournier for the *B. henselae* sequencing.

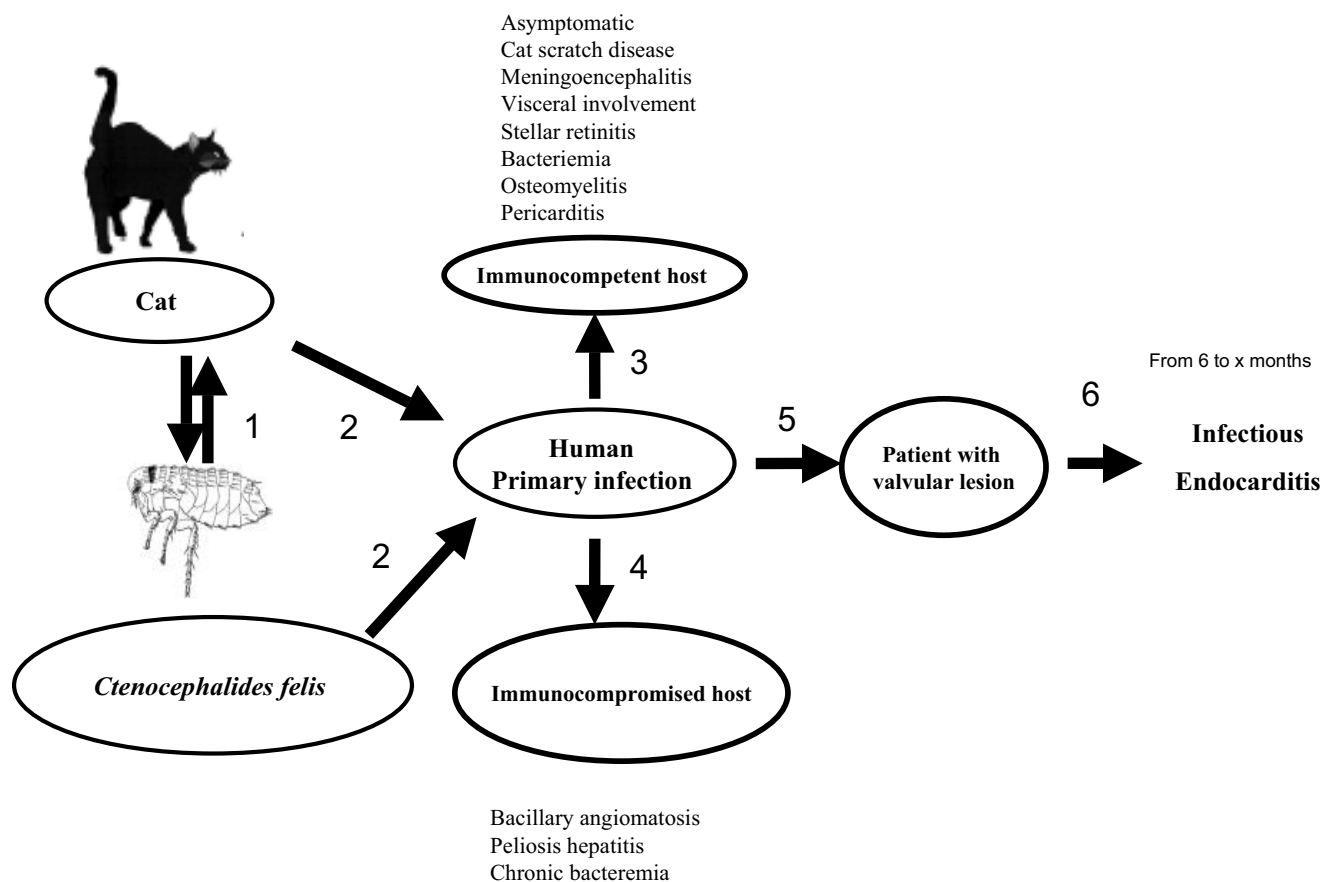


Figure 3
Natural history of *B. henselae* endocarditis. 1: Cycle of *B. henselae* between cat and *Ctenocephalides felis*. 2: Contamination of human being. 3: Clinical presentation in non immunocompromised patient with contact with cat. 4: Clinical presentation contact in immunocompromised with contact with cat. 5: Predisposing valvular lesion. 6: Endocarditis.

References

1. Zeaiter Z, Fournier PE, Greub G, Raoult D: **Diagnosis of Bartonella endocarditis by a real-time nested PCR assay using serum.** *J Clin Microbiol* 2003, **41**:919-925.
2. Drancourt M, Mainardi JL, Brouqui P, Vandenesch F, Carta A, Lehnert F, Etienne J, Goldstein F, Acar J, Raoult D: **Bartonella (Rochalimaea) quintana endocarditis in three homeless men.** *N Engl J Med* 1995, **332**:419-423.
3. Raoult D, Fournier PE, Drancourt M, Marrie TJ, Etienne J, Cosserrat J, Cacoub P, Poinignon Y, Leclercq P, Sefton AM: **Diagnosis of 22 new cases of Bartonella endocarditis.** *Ann Intern Med* 1996, **125**:646-652.
4. Daly JS, Worthington MG, Brenner DJ, Moss CW, Hollis DG, Weyant RS, Steigerwalt AG, Weaver RE, Daneshvar MI, O'Connor SP: **Rochalimaea elizabethae sp. nov. isolated from a patient with endocarditis.** *J Clin Microbiol* 1993, **31**:872-881.
5. Roux V, Eykyn SJ, Wyllie S, Raoult D: **Bartonella vinsonii subsp. berkhoffii as an agent of afebrile blood culture-negative endocarditis in a human.** *J Clin Microbiol* 2000, **38**:1698-1700.
6. Fenollar F, Sire S, Raoult D: **Bartonella vinsonii subsp. arupensis as an agent of blood culture-negative endocarditis in a human.** *J Clin Microbiol* 2005, **43**:945-947.
7. Avidor B, Graidy M, Efrat G, Leibowitz C, Shapira G, Schattner A, Zimhony O, Giladi M: **Bartonella koehlerae, a new cat-associated agent of culture-negative human endocarditis.** *J Clin Microbiol* 2004, **42**:3462-3468.
8. Raoult D, Roblot F, Rolain JM, Besnier JM, Loulergue J, Bastides F, Choutet P: **First isolation of Bartonella alsatica from a valve of a patient with endocarditis.** *J Clin Microbiol* 2006, **44**:278-279.
9. Benslimani A, Fenollar F, Lepidi H, Raoult D: **Bacterial zoonoses and infective endocarditis, Algeria.** *Emerg Infect Dis* 2005, **11**:216-224.
10. Znazen A, Rolain JM, Hammami N, Kammoun S, Hammami A, Raoult D: **High prevalence of Bartonella quintana endocarditis in Sfax, Tunisia.** *Am J Trop Med Hyg* 2005, **72**:503-507.
11. Giladi M, Kletter Y, Avidor B, Metzkor-Cotter E, Varon M, Golan Y, Weinberg M, Riklis I, Ephros M, Slater L: **Enzyme immunoassay for the diagnosis of cat-scratch disease defined by polymerase chain reaction.** *Clin Infect Dis* 2001, **33**:1852-1858.
12. Raoult D, Tissot DH, Enea-Mutillod M: **Positive predictive value of Rochalimaea henselae antibodies in the diagnosis of cat-scratch disease.** *Clin Infect Dis* 1994, **19**:355.
13. Houpiikian P, Raoult D: **Western immunoblotting for Bartonella endocarditis.** *Clin Diagn Lab Immunol* 2003, **10**:95-102.

14. Fournier PE, Mainardi JL, Raoult D: **Value of microimmunofluorescence for diagnosis and follow-up of Bartonella endocarditis.** *Clin Diagn Lab Immunol* 2002, **9**:795-801.
15. Rolain JM, Lecam C, Raoult D: **Simplified serological diagnosis of endocarditis due to Coxiella burnetii and Bartonella.** *Clin Diagn Lab Immunol* 2003, **10**:1147-1148.
16. Fournier PE, Lelievre H, Eykyn SJ, Mainardi JL, Marrie TJ, Bruneel F, Roure C, Nash J, Clave D, James E, oit-Lemercier C, Deforges L, Tissot-Dupont H, Raoult D: **Epidemiologic and clinical characteristics of Bartonella quintana and Bartonella henselae endocarditis: a study of 48 patients.** *Medicine (Baltimore)* 2001, **80**:245-251.
17. Greub G, Lepidi H, Rovey C, Casalta JP, Habib G, Collard F, Fournier PE, Raoult D: **Diagnosis of infectious endocarditis in patients undergoing valve surgery.** *Am J Med* 2005, **118**:230-238.
18. Lepidi H, Durack DT, Raoult D: **Diagnostic methods current best practices and guidelines for histologic evaluation in infective endocarditis.** *Infect Dis Clin North Am* 2002, **16**:339-61, ix.
19. Lepidi H, Fournier PE, Raoult D: **Quantitative analysis of valvular lesions during Bartonella endocarditis.** *Am J Clin Pathol* 2000, **114**:880-889.
20. Gouriet F, Fenollar F, Patrice JY, Drancourt M, Raoult D: **Use of shell-vial cell culture assay for isolation of bacteria from clinical specimens: 13 years of experience.** *J Clin Microbiol* 2005, **43**:4993-5002.
21. Drancourt M, Bollet C, Carlioz A, Martelin R, Gayral JP, Raoult D: **16S ribosomal DNA sequence analysis of a large collection of environmental and clinical unidentifiable bacterial isolates.** *J Clin Microbiol* 2000, **38**:3623-3630.
22. Li W, Chomel BB, Maruyama S, Gupta L, Sander A, Raoult D, Fournier PE: **Multispacer typing to study the genotypic distribution of Bartonella henselae populations.** *J Clin Microbiol* 2006, **44**:2499-2506.
23. Rolain JM, Brouqui P, Koehler JE, Maguina C, Dolan MJ, Raoult D: **Recommendations for treatment of human infections caused by Bartonella species.** *Antimicrob Agents Chemother* 2004, **48**:1921-1933.
24. Baorto E, Payne RM, Slater LN, Lopez F, Relman DA, Min KW, St GJW III: **Culture-negative endocarditis caused by Bartonella henselae.** *J Pediatr* 1998, **132**:1051-1054.
25. Breathnach AS, Hoare JM, Eykyn SJ: **Culture-negative endocarditis: contribution of bartonella infections.** *Heart* 1997, **77**:474-476.
26. Maurin M, Rolain JM, Raoult D: **Comparison of in-house and commercial slides for detection by immunofluorescence of immunoglobulins G and M against Bartonella henselae and Bartonella quintana.** *Clin Diagn Lab Immunol* 2002, **9**:1004-1009.
27. Arvand M, Schad SG: **Isolation of Bartonella henselae DNA from the peripheral blood of a patient with cat scratch disease up to 4 months after the cat scratch injury.** *J Clin Microbiol* 2006, **44**:2288-2290.
28. Raoult D, Marrie T, Mege J: **Natural history and pathophysiology of Q fever.** *Lancet Infect Dis* 2005, **5**:219-226.
29. Fenollar F, Fournier PE, Carrieri MP, Habib G, Messana T, Raoult D: **Risks factors and prevention of Q fever endocarditis.** *Clin Infect Dis* 2001, **33**:312-316.
30. Fenollar F, Thuny F, Xeridat B, Lepidi H, Raoult D: **Endocarditis after acute Q fever in patients with previously undiagnosed valvulopathies.** *Clin Infect Dis* 2006, **42**:818-821.
31. Breitschwerdt EB, Kordick DL: **Bartonella infection in animals: carriership, reservoir potential, pathogenicity, and zoonotic potential for human infection.** *Clin Microbiol Rev* 2000, **13**:428-438.
32. Tsuneoka H, Tsukahara M: **Analysis of data in 30 patients with cat scratch disease without lymphadenopathy.** *J Infect Chemother* 2006, **12**:224-226.

Pre-publication history

The pre-publication history for this paper can be accessed here:

<http://www.biomedcentral.com/1471-2334/7/30/prepub>

Publish with **BioMed Central** and every scientist can read your work free of charge

"BioMed Central will be the most significant development for disseminating the results of biomedical research in our lifetime."

Sir Paul Nurse, Cancer Research UK

Your research papers will be:

- available free of charge to the entire biomedical community
- peer reviewed and published immediately upon acceptance
- cited in PubMed and archived on PubMed Central
- yours — you keep the copyright

Submit your manuscript here:
http://www.biomedcentral.com/info/publishing_adv.asp

