



ELSEVIER

Contents lists available at ScienceDirect

Data in Brief

journal homepage: www.elsevier.com/locate/dib

Data Article

New molecular sequence data and species trees for North American whipsnakes

Kyle A. O'Connell^{a,b,*}, Eric N. Smith^a^a Department of Biology, The University of Texas at Arlington, Arlington, TX 76019, USA^b Department of Vertebrate Zoology, National Museum of Natural History, District of Columbia, WA 20007, USA

ARTICLE INFO

Article history:

Received 28 March 2018

Received in revised form

4 April 2018

Accepted 18 April 2018

ABSTRACT

In this data article we present species trees based on coalescent species delimitation results for North American whipsnakes, as well as metadata pertaining to the article "The effect of missing data on coalescent species delimitation and a taxonomic revision of whipsnakes (Colubridae: Masticophis)" (MPE-2017-76-R1). Species trees were constructed using SNP data generated from double-digest RADseq, filtered to 80% completeness between species. Tables correspond with the primary manuscript and serve as a repository of genetic sequence information for whipsnakes. These data can be downloaded and combined with future whipsnake datasets.

© 2018 The Authors. Published by Elsevier Inc. This is an open access article under the CC BY license (<http://creativecommons.org/licenses/by/4.0/>).

Specifications table

Subject area	<i>Biology</i>
More specific subject area	<i>Phylogenetics, Herpetology</i>
Type of data	<i>Figure, table</i>
How data was acquired	<i>Phylogenetic analyses</i>
Data format	<i>Analyzed, raw</i>

DOI of original article: <https://doi.org/10.1016/j.ympev.2018.03.018>

* Corresponding author at: National Museum of Natural History, Department of Biology, The University of Texas at Arlington, Arlington, TX 76019, USA.

E-mail address: kyleaoconnell22@gmail.com (K.A. O'Connell).<https://doi.org/10.1016/j.dib.2018.04.067>2352-3409/© 2018 The Authors. Published by Elsevier Inc. This is an open access article under the CC BY license (<http://creativecommons.org/licenses/by/4.0/>).

Experimental factors	
Experimental features	Conducted phylogenetic analyses
Data source location	USA, Mexico
Data accessibility	GenBank (KT713652-KT713738), NCBI Short Read Archive SRS1047296, SRS1047267, SRS1047268, SRS1047265

Value of the data

- The mitochondrial phylogeny shows the phylogenetic structure of whipsnakes, with an emphasis on the Great Plains lineage of the United States.
 - The included species trees reveal previously unknown phylogenetic relationships among whipsnakes.
 - [Supplementary Table 1](#) shows metadata for whipsnake sequence data that could be used in future studies.
 - [Table 1](#) explains missing data thresholds used for various analyses.
-

1. Data

The data included in this DIB article includes details on two species trees of North American whipsnakes, as well as the meta-data for all whipsnake sequence data used in the original article [1]. The species trees were estimated using coalescent methods from SNP data, with 20% missing data thresholds. Two species trees to encompass both species complexes included in this study. Meta-data includes information for both mitochondrial sequence data, and ddRADseq short sequence reads ([Table 1](#)).

2. Experimental design, materials and methods

2.1. Mitochondrial phylogenetic analysis

We aligned all sequences with the Geneious Aligner under default settings [2]. We calculated uncorrected average pairwise distance between lineages in Mega v7 [3]. We selected the most probable model of nucleotide evolution for Likelihood analyses using Bayesian information criteria implemented in PartitionFinder [4], partitioning by codon position. We estimated a maximum likelihood phylogeny using raxmlGUI v1.3 with 1000 rapid bootstrap iterations [5] and visualized our final phylogeny in FigTree v1.4.3 [6]. We considered nodes with bootstrap values ≥ 70 as strongly supported ([Fig. 1](#)).

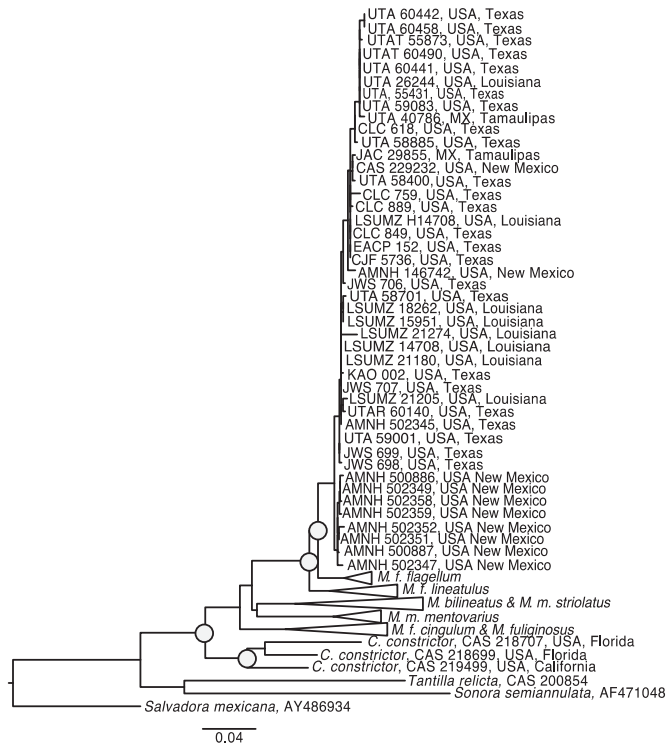
2.2. SNP-based species tree analysis

Species trees were estimated with $\leq 20\%$ missing data using SNAPP v1.0. We assigned species identities based on the best supported model from our BFD* analyses. We allowed BEAUti to estimate the mutation rate, and confirmed that both U and V were approximately equal to one. We assigned a Gamma distribution to our Lambda prior, with an Alpha of 1 and a Beta of 77. On our Snap prior we assigned an Alpha of 1, a Beta of 100, and a Lambda of 77. We ran the analyses for 10,000,000 MCMC generations, sampling every 1000 generations. We visualized the complete tree sets in DENSITREE v1.0 [7], and removed the first 10% of trees as burn-in ([Fig. 2](#)).

Table 1

Parameters for each SNP dataset utilized in this study, including the number of loci, and the percent missing data.

Dataset	N	% Missing at locus	Mean % missing individual	# Loci	Analysis used
A	14	30	20	365	SPLITSTREE
B	26	50	35.3	2077	SNAPP
C	26	20	13.3	325	SNAPP
D	10	50	38.6	1464	SNAPP
E	10	20	16.2	216	SNAPP

**Fig. 1.** Maximum likelihood phylogeny generated from mtDNA. The full clade representing *Masticophis flagellum testaceus* is shown. All other clades are collapsed. Nodes with at least 70% bootstrap support are shown with grey circles.

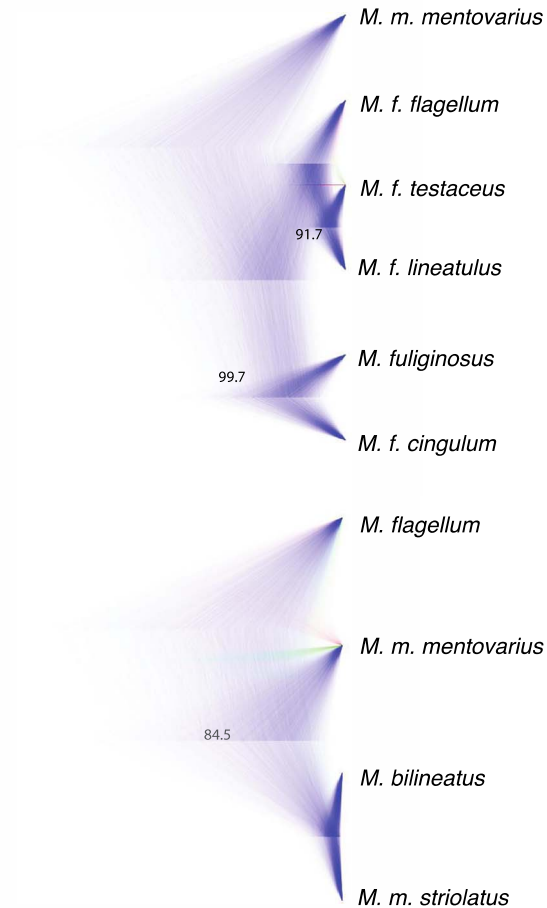


Fig. 2. Species trees generated using SNAPP based on the best-supported models from our Bayes Factor delimitation analysis from the primary manuscript for datasets C and E ($\leq 20\%$ missing loci). Support values are labeled for each node that is not fully supported.

Transparency document. Supporting information

Supplementary data associated with this article can be found in the online version at <http://dx.doi.org/10.1016/j.dib.2018.04.067>.

Appendix A. Supplementary material

Supplementary data associated with this article can be found in the online version at <http://dx.doi.org/10.1016/j.dib.2018.04.067>.

References

- [1] KA O'Connell, EN Smith, The effect of missing data on coalescent species delimitation and a taxonomic revision of whipsnakes (Colubridae: Masticophis), *Mol. Phys. Evol.* (2018), <http://dx.doi.org/10.1016/j.ympev.2018.03.018> (In Press).
- [2] M. Kearse, R. Moir, A. Wilson, S. Stones-Havas, M. Cheung, S. Sturrock, S. Buxton, A. Cooper, S. Markowitz, C. Duran, T. Thierer, B. Ashton, P. Mentjies, A. Drummond, Geneious Basic: an integrated and extendable desktop software platform for the organization and analysis of sequence data, *Bioinformatics* 28 (2012) 1647–1649.
- [3] S. Kumar, G. Stecher, K. Tamura, MEGA7: molecular evolutionary genetics analysis version 7.0 for bigger datasets, *Mol. Biol. Evol.* 33 (2016) 1870–1874.
- [4] R. Lanfear, B. Calcott, S.Y.W. Ho, S. Guindon, PartitionFinder: combined selection of partitioning schemes and substitution models for phylogenetic analysis, *Mol. Biol. Evol.* 29 (2012) 1695–1701.
- [5] M. Silvestro, I. Michalak, RaxmlGUI: a graphical front-end for RaxML, *Organisms Divers. Evol.* 12 (2012) 335–337.
- [6] A. Rambaut (<http://tree.bio.ed.ac.uk/software/figtree/>). (Accessed 6 January 2016).
- [7] R. Bouckaert, DensiTree: making sense of sets of phylogenetic trees, *Bioinformatics* 26 (2010) 1372–1373.