

RESEARCH

Open Access



Biomechanical and physiological differences between synchronous and asynchronous low intensity handcycling during practice-based learning in able-bodied men

Cassandra Kraaijenbrink^{1,2*} , Riemer J. K. Vegter¹, Alexander H. R. Hensen¹, Heiko Wagner² and Lucas H. V. van der Woude^{1,3}

Abstract

Background: Originally, the cranks of a handcycle were mounted with a 180° phase shift (asynchronous). However, as handcycling became more popular, the crank mode switched to a parallel mounting (synchronous) over the years. Differences between both modes have been investigated, however, not into great detail for propulsion technique or practice effects. Our aim is to compare both crank modes from a biomechanical and physiological perspective, hence considering force and power production as a cause of physiological outcome measures. This is done within a practice protocol, as it is expected that motor learning takes place in the early stages of handcycling in novices.

Methods: Twelve able-bodied male novices volunteered to take part. The experiment consisted of a pre-test, three practice sessions and a post-test, which was subsequently repeated for both crank modes in a counterbalanced manner. In each session the participants handcycled for 3 × 4 minutes on a leveled motorized treadmill at 1.94 m/s. Inbetween sessions were 2 days of rest. 3D forces, handlebar and crank angle were measured on the left hand side. Kinematic markers were placed on the handcycle to monitor the movement on the treadmill. Lastly, breath-by-breath spirometry combined with heart-rate were continuously measured. The effects of crank mode and practice-based learning were analyzed using a two way repeated measures ANOVA, with synchronous vs asynchronous and pre-test vs post-test as within-subject factors.

Results: In the pre-test, asynchronous handcycling was less efficient than synchronous handcycling in terms of physiological strain, force production and timing. At the post-test, the metabolic costs were comparable for both modes. The force production was, also after practice, more efficient in the synchronous mode. External power production, crank rotation velocity and the distance travelled back and forwards on the treadmill suggest that asynchronous handcycling is more constant throughout the cycle.

(Continued on next page)

* Correspondence: kraaijen@uni-muenster.de

¹Centre for Human Movement Sciences, University of Groningen, University Medical Centre Groningen, Antonius Deusinglaan 1, 9713 AV Groningen, the Netherlands

²Department of Motion Science, Institute of Sports Science, University of Münster, Horstmarer Landweg 62b, 48149 Münster, Germany

Full list of author information is available at the end of the article



(Continued from previous page)

Conclusions: As the metabolic costs were reduced in the asynchronous mode, we would advise to include a practice period, when comparing both modes in scientific experiments. For handcycle users, we would currently advise a synchronous set-up for daily use, as the force production is more effective in the synchronous mode, even after practice.

Keywords: Cyclic exercise, Crank mode, Practice, Efficiency, Force production, Motor learning

Background

Individuals, who use a manual wheelchair for daily locomotion depend on their upper body for mobility and other activities of daily living. Self-propelled hand-rim wheelchairs are often used, as they are especially useful indoors, because of their small size and good maneuverability [1]. However, with a mechanical efficiency (ME) of 5–10% at submaximal level, hand-rim wheelchairs are inefficient and physiologically straining for longer distances, especially outside [2–5]. A more energy efficient upper body exercise mode is arm cranking or handcycling (ME = 10–17% at submaximal level) [2, 3, 6–10]. A practical alternative for outdoor wheeled mobility is therefore the attach-unit handcycle, a crank system that can be attached to/or mounted in front of the hand-rim wheelchair. It makes daily handcycling feasible for a wider public. Especially in a flat country like the Netherlands, where able-bodied individuals use a bicycle for commuting and cycling facilities are optimal, the attach-unit handcycle is a good alternative to go shopping, go to work, school or the sports club, meet with friends, etc. This increases an individual's independence in daily living and participation in the society following the conceptual framework of the International Classification of Functioning [11].

As the vehicle mechanics of the handcycle originally stem from bicycle technology, the handcycling crank mode was initially asynchronous, i.e. the cranks were mounted with a phase shift of 180 degrees. Over the years, handcycling became more popular and the crank mode switched from asynchronous (Asyn) to synchronous (Syn), in other words to the parallel crank setting seen today [12]. The differences between both crank modes have been subject to research over the years, but to date a proper one-to-one biophysical comparison, combining a biomechanical with a physiological analysis, is lacking. Nonetheless, some work has been performed essentially along two lines of research. Firstly, research has been done with a fixed (arm-crank) ergometer or a handcycle-ergometer, where the handcycle is part of the set-up. Secondly, treadmill based research, where the handcyclist is less constrained and steering is a necessity, has been performed.

During arm cranking, i.e. with an ergometer where the system has no steering option, no effects of crank mode on the physiological responses, like heart rate, oxygen

uptake, ventilation and blood lactate levels were found at several sub-maximal power output levels (< 100 W) for able-bodied persons [13, 14], wheelchair users [14] as well as for experienced handcyclists [10]. However, with this experienced group, a higher mechanical efficiency is found for the asynchronous mode (16–17%) over the synchronous (14–15%) [10]. In a more biomechanical approach with a handcycle-ergometer set-up, Faupin et al. (2011) found more range of motion of the trunk, shoulder and elbow in the asynchronous mode. The torque produced in the synchronous mode was significantly lower during the pull phase and significantly higher during the push up than during asynchronous handcycling, indicating a different propulsion style between modes [15].

On the other hand, for submaximal handcycling with an attach-unit handcycle on a motorized treadmill, where steering is necessary, a number of studies in able-bodied men showed that the asynchronous mode is physiologically less efficient than synchronous handcycling. Mechanical efficiency is lower (–1–2%) and oxygen uptake (maximal + 200 mL/min), ventilation (maximal + 10 L/min) and heart rate responses (maximal 20 bpm or 15% HRR) were reported higher in submaximal asynchronous steady state handcycling [9, 16–18]. This was found across different cadences [9, 17], treadmill speeds [17, 18], treadmill slopes [9, 16], and power output levels [16]. In addition to these physiological parameters, Bafghi et al. (2008) was one of the first to measure the muscle activity and the external forces at the handlebar [18]. The muscles that stabilize the crank system were found to be activated more in the asynchronous mode, whereas muscles around the shoulder showed higher activation in the synchronous mode. Higher mean forces in the sagittal plane were seen during synchronous handcycling, whereas no significant differences in the mediolateral forces were found. Unfortunately, the tangential (propulsion) force and the radial force components could not be differentiated in their set-up. Although this research is the first to consider biomechanics, the differences between both crank modes have not been investigated with a three-dimensional analysis. Building on the initial insights from Bafghi et al., a 3D approach is used in the current study, adding the possibility to differentiate between steering and power producing forces. As asynchronous handcycling was found to be more physiological straining than synchronous, it was

suggested that the asynchronous mode is inherently less stable when propelling forward on the treadmill, because one needs to combine steering and power production, where the latter tends to destabilize coasting direction [16–18]. With our 3D approach, force and power production can serve as a cause for the physiological measures and the knowledge on the differences between crank modes can be amended.

To the authors' knowledge, the effects of the crank mode are limited to aforementioned cross-sectional study designs in which the participant ride once in every crank mode. To date, short-term practice effects on efficiency and technique are not investigated in handcycling. Yet, one of the characteristics of a skilled motor performance is an optimization of energy expenditure [19–21]. With practice, novices are able to reduce physiological costs, as was found for walking, creeping [20] and race-walking [22] amongst others. For rowing, a closed-chain cyclic movement, like handcycling, similar results have been shown. Within ten practice sessions of 16 min in a rowing ergometer, measures of rating of perceived exertion, as well as the oxygen consumption significantly decreases (-2.5 ml/kg/min), as economy increases ($+0.4$ W/ml) [21]. Besides these physiological measures, rowing technique improves, as represented by reductions in stroke rate, peak force variability and muscle activation. These results support the hypothesis that a strong link exists between physiology and movement coordination. In addition, for forms of wheeled mobility, other than handcycling, it has been shown that natural motor learning takes place after a short period of practice [5, 23–25]. For instance, mechanical efficiency and propulsion technique (e.g. frequency and stroke angle) can improve even within 12 min of low intensity hand-rim wheelchair propulsion [23]. For handcycling, both mechanical efficiency and cycling technique, i.e. the force application pattern, are to be expected to improve over time. Thereupon, one of the objectives of this study was to include the process of natural motor learning within the biophysical approach towards the comparison of both modes of handcycling, shining a new light on the matter.

In the current pre-test and post-test study, the differences between synchronous and asynchronous handcycling at low intensity were systematically evaluated. Able-bodied novices were assessed during practice-based learning on a motor driven treadmill by taking a biophysical approach. It was hypothesized that the physiological response is initially higher for asynchronous handcycling than for synchronous handcycling, in line with previous research. However, canceling out the instability in asynchronous handcycling is a skill that is expected to be learned over time, whereas this instability does not exist for synchronous handcycling. An increase in mechanical

efficiency and force effectiveness in asynchronous handcycling are likely the result of practice. Therefore, the difference between both modes should reduce with practice.

Methods

Participants

Twelve able-bodied men (age: 23.9 ± 1.2 years, mass: 78.6 ± 9.1 kg, height: 1.81 ± 0.05 m and arm length: 0.64 ± 0.02 m) volunteered to take part in this low intensity handcycle study after being given written and verbal information and signing an informed consent form. Exclusion criteria were having shoulder complaints or impairments, having any medical conditions (PAR-Q [26]), or having any handcycling experience. The latter, to ensure an equal experience level in both modes across participants. The local ethics committee of the Centre for Human Movement Sciences, University Medical Centre Groningen, University of Groningen, the Netherlands approved the study (No. ECB/2015.06.17_1).

Set-up and protocol

During the complete experiment, the participants rode on a level motor driven treadmill (2.4×1.2 m, Motekforce Link b.v., Amsterdam, the Netherlands) at 1.94 m/s, as is within the range found suitable for handcycling [16, 18, 27]. The experiment consisted of a pre-test, followed by three practice sessions and a post-test in one of the two crank modes, followed by the same line-up of activities in the other mode (Fig. 1). The order of crank mode was counterbalanced, i.e. half of the participants started with the synchronous mode, half with the asynchronous mode. For each mode, each of the five 16 min sessions consisted of three four-minute blocks with two minutes rest in-between. In the resting period, Rate of Perceived Exertion (RPE; Borg Categorical 6–20 Scale [28]) was registered to check the sub-maximal conditions. To ensure enough rest between sessions, the participants came back every 3 days. The pre- and post-test consisted of level handcycling without additional resistance (~ 15 W) at 60 rpm [9, 17, 29]. In the three practice sessions, resistance ($+0$ W, $+10$ W, $+20$ W) and cadence (52, 60, 70 rpm) were varied as part of a bigger research project [30, 31]. To ensure a physiological steady state, only the last minute of the selected four-minute blocks were analyzed with Matlab (MATLAB 2018b, MathWorks Inc., Natick, Massachusetts, USA).

Instrumented handcycle and kinetic measures

All participants used the same instrumented add-on handcycle, that was custom made by the Technical Support Workshop of the Faculty of Behavioral and

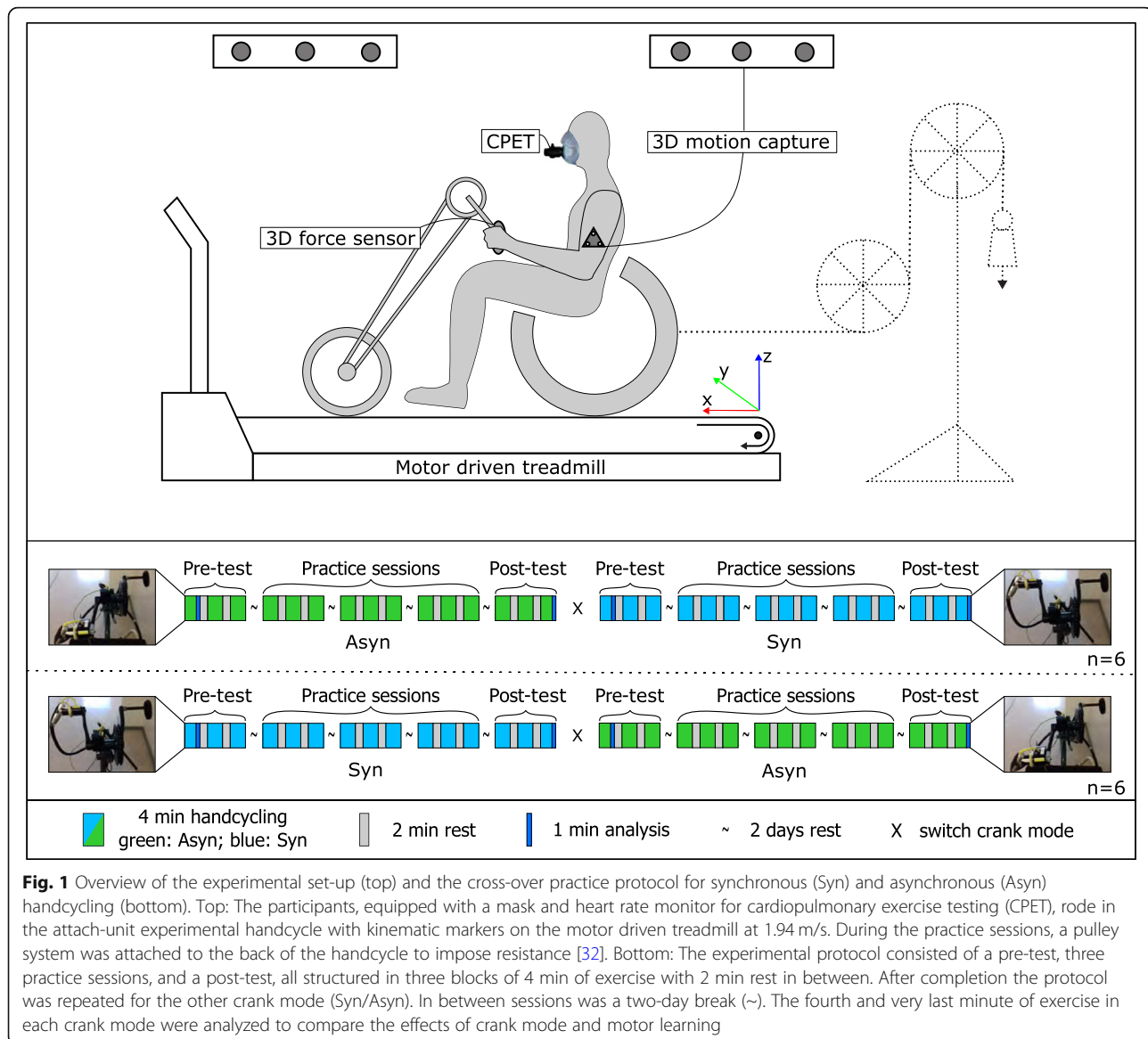
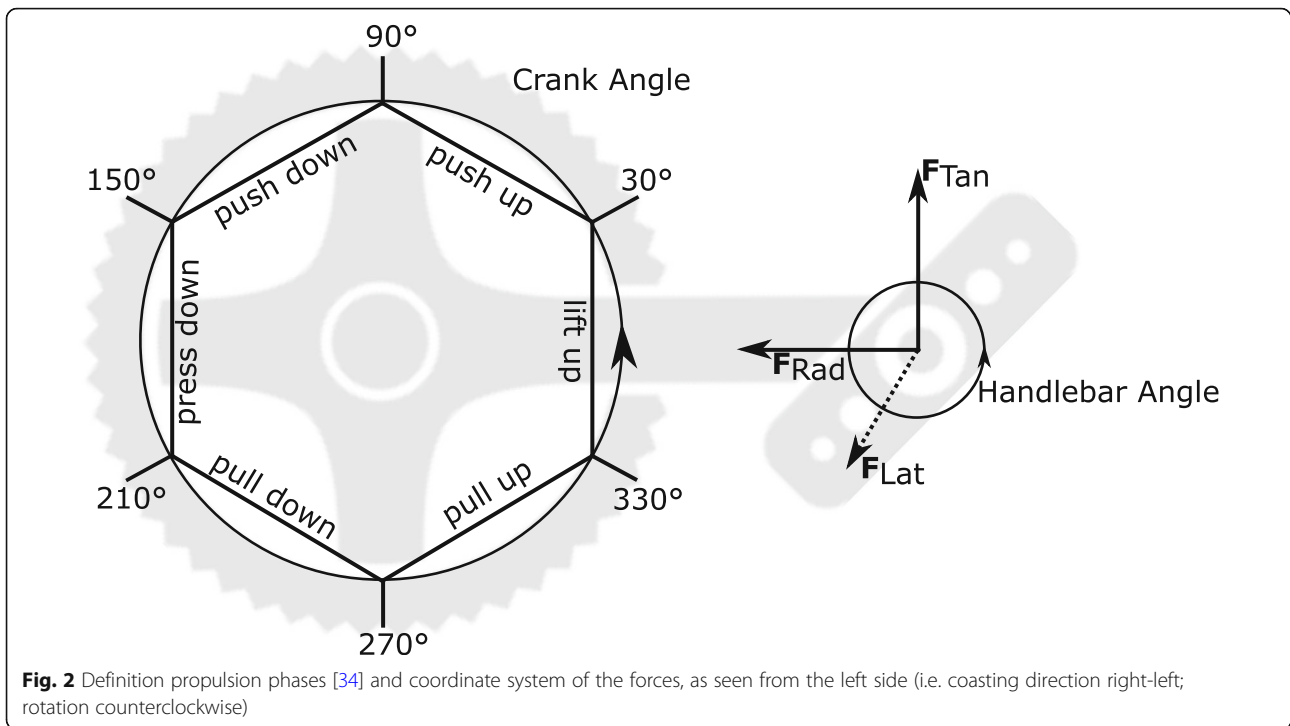


Fig. 1 Overview of the experimental set-up (top) and the cross-over practice protocol for synchronous (Syn) and asynchronous (Asyn) handcycling (bottom). Top: The participants, equipped with a mask and heart rate monitor for cardiopulmonary exercise testing (CPET), rode in the attach-unit experimental handcycle with kinematic markers on the motor driven treadmill at 1.94 m/s. During the practice sessions, a pulley system was attached to the back of the handcycle to impose resistance [32]. Bottom: The experimental protocol consisted of a pre-test, three practice sessions, and a post-test, all structured in three blocks of 4 min of exercise with 2 min rest in between. After completion the protocol was repeated for the other crank mode (Syn/Asyn). In between sessions was a two-day break (~). The fourth and very last minute of exercise in each crank mode were analyzed to compare the effects of crank mode and motor learning

Movement Sciences of the VU University Amsterdam; see van Drongelen et al. (2011) for specifications [33]. No individual seating adjustments were made within this experiment. The crank axis height was just below the acromion for all participants. The handcycle had a seven-speed hub gear (Shimano Inter 7 SG-7C18, Shimano Inc., Osaka, Japan) from which the second gear (gear ratio: 0.741) was used during pre- and post-test. The front wheel was 16 in. and had a tire pressure of 260 kPa, the rear wheels were 24 in. and had a tire pressure of 600 kPa. The crank length was 0.17 m. The crank mode was changed by demounting the right crank, rotating the left crank 180°, and remounting the right crank. The start of the propulsion cycle was defined as a horizontal crank position closest to the participant.

Only the left handlebar of the handcycle was equipped with a 3D force transducer (100 Hz, AMTI, Watertown, MA, USA) and two optical encoders (Type 19, Elcis, Collegno, Italy) that recorded the handlebar and the crank angle. The force components, mediolateral (F_{Lat} , N), radial (F_{Rad} , N) and tangential force (F_{Tan} , N), were defined in the local coordinate system of the handlebar based on the handlebar angle (Fig. 2). Consequently, the resultant force was calculated. Kinetic data was low pass filtered (2nd order Butterworth, cut-off frequency 5 Hz, sample frequency 100 Hz) and resampled to one data point per degree using 'interp1' in Matlab. The average cycle of all complete cycles of the last minute was calculated for all force components.

The propulsion cycle was divided in six phases; push up (30–90°), push down (90–150°), press down (150–



210°), pull down (210–270°), pull up (270–330°), and the lift up phase (330–30°) [27, 34, 35].

The angular velocity of the crank (ω , rad/s) was determined as the first derivative of the crank angle. The external power output produced at the handle was calculated according to eq. 1.

$$P_{External}(W) = F_{Tan} \cdot \omega \cdot Length_{crank} \tag{1}$$

Since the right side was not instrumented, the total power produced by both hands was assumed to be on average similar, since participants had to drive in a straight line on the treadmill [27]. For synchronous

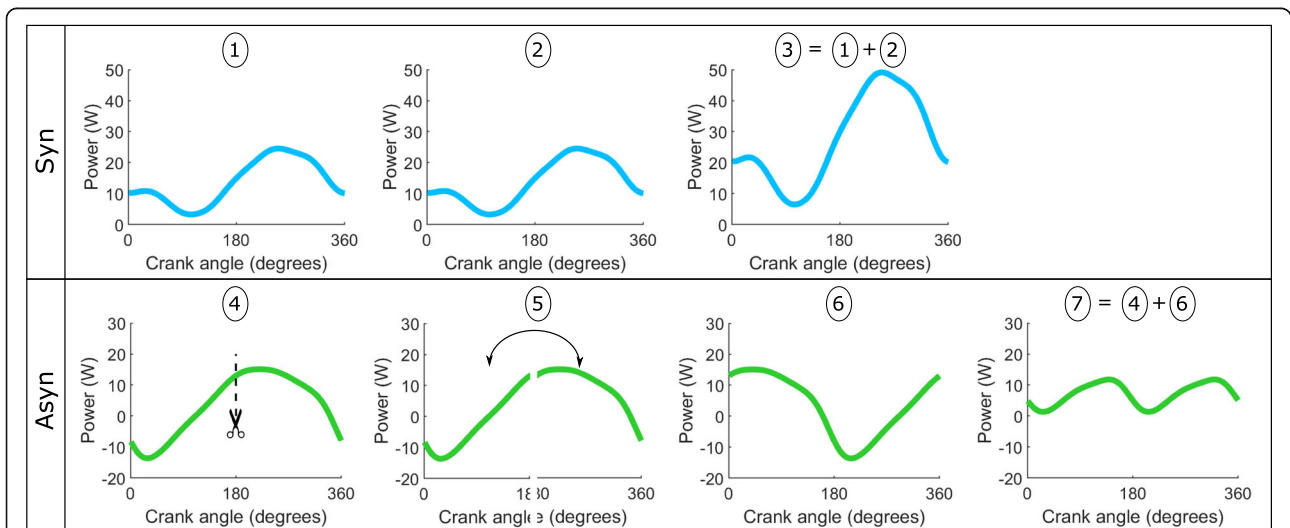


Fig. 3 Procedure to calculate the external power output of both hands (example for one cycle). The top figures show the procedure for synchronous hand cycling. (1) The external power output as measured at the left handlebar. (2) The assumed external power output produced at the right handlebar, i.e. equal to the left. (3) The total external power output as the sum of both hands. The bottom figures show the procedure for the asynchronous mode. (4) The external power output as measured at the left handlebar. As the right handlebar is mounted with a 180 degree shift, this data is 'cut' at 180 degrees. (5) The last 180 degrees is placed in front of the first 180 degrees of the cycle. (6) The result of step 5, i.e. the assumed external power output at the right handlebar. (7) The total external output as the sum of both hands

handcycling, this means that the power produced at both handles is the measured power output times two. For the asynchronous mode, we took the measured power output, applied a phase shift of 180° and added this to the original measured power output. In Fig. 3, this procedure is shown for one cycle. The average cycle of all complete cycles of the last minute was calculated for further analysis.

The efficiency of force application at the handlebar is calculated for every time step as the fraction of effective force (FEF, %) according to eq. 2 [36].

$$FEF (\%) = \frac{F_{Tan}}{F_{Resultant}} * 100\% \quad (2)$$

The mean FEF for both hands was determined. This procedure was similar to the calculation of external power output. For synchronous handcycling, we assumed that the FEF at the right handlebar was equal to the one measured at the left. The total FEF was the mean value of both hands. For asynchronous handcycling, we performed the same 180 degree phase shift as shown in Fig. 3 (step 4–6). The measured FEF of the left side was added to these assumed values on the right side. Thereupon, the added values were divided by two to gain the mean value.

Kinematic measurements

The 3D position of the handcycle with respect to the treadmill was determined with the use of an optoelectronic camera system (Optotrak, Northern Digital, Waterloo, Canada) and two cluster markers (3 active markers each) at a frequency of 100 Hz. One cluster was placed on the crank system and one on the wheelchair. The data from these two clusters were transformed into six virtual markers, namely the front wheel axis left and right, the crank axis left and right, and the rear wheel axes left and right. Missing data was fitted with a spline method using the function ‘fillmissing’ in Matlab.

The distance travelled in the forward-backwards direction (x , Fig. 1) and from left to right (y , Fig. 1) was determined for each marker according to eq. 3. The total distance travelled by the handcycle relative to the treadmill position was defined as the average value of all six markers.

$$Distance (m) = \text{sum}(\text{abs}(\text{diff}(\text{Position}))) \quad (3)$$

Physiological measurements

A breath-by-breath gas exchange data analyzer with heart rate sensor (Cosmed Quark CPET, Cosmed, Rome, Italy, via TulipMed, Nieuwegein, the Netherlands) continuously measured oxygen uptake (VO_2 , mL/min/kg), carbon dioxide output (VCO_2 , mL/min/kg), ventilation

(VE, L/min/kg), breathing frequency (BF, breaths/min), and heart rate (HR, beats/min). The system was regularly calibrated using a 16% O_2 , 5% CO_2 calibration gas, as well as using a certified 3-L calibration syringe before every session. Energy expenditure (EE, W) was calculated using VO_2 and VCO_2 according to eq. 4 [37].

$$EE (W) = \left(\frac{\left(4.94 * \frac{VCO_2}{VO_2} + 16.04 \right) * VO_2}{60} \right) \quad (4)$$

Subsequently, mechanical efficiency (ME, %) was calculated according to eq. 5 [37].

$$ME (\%) = \frac{\text{mean}(P_{External, both hands})}{\text{mean}(Energy Expenditure)} * 100\% \quad (5)$$

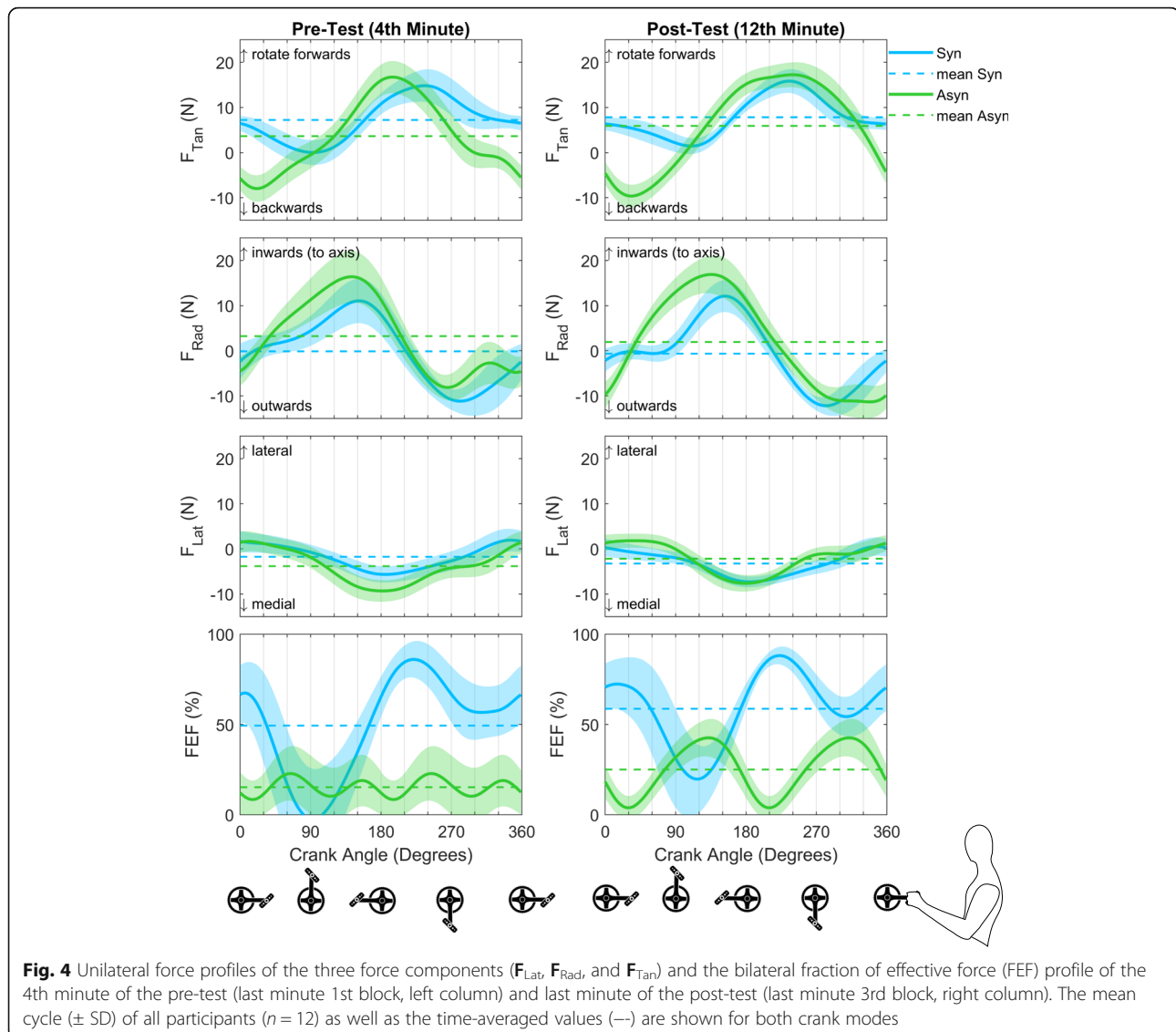
Statistics

A two-way repeated measures ANOVA was performed for all twelve participants with the within subject factors ‘crank mode’ and ‘practice’. The effect of crank mode was defined as the comparison of synchronous versus asynchronous handcycling. The effect of practice was defined as the comparison of the final minute of the first block of the pre-test, i.e. the fourth minute of handcycling, versus the last minute of the third block of the post-test, i.e. the last minute of handcycling in a given mode.

For the kinetic data, the mean cycle of all participants, i.e. the force profile, was determined. The 1D SPM method was used to analyze the force profiles using the function ‘anova2rm’ with a significance level of $\alpha = 0.05$ (spm1d package for Matlab, Pataky 2018 [38]).

For kinematic and physiological data mean values were calculated for every variable, before including them in the statistical analysis in SPSS (IBM Corp. Released 2017. IBM SPSS Statistics for Windows, Version 25.0. Armonk, NY: IBM Corp). Two kinematic measurements are missing, due to technical problems. The mean of the other participants were taken for the missing values of that condition. Kinematic data was not found to be normally distributed. Therefore, two Wilcoxon Signed Ranks Tests were performed, one to compare synchronous versus asynchronous handcycling ($n = 24$, independent of practice), one to test the effect of practice ($n = 24$, independent of mode). The significance level (2-tailed) was corrected for multiple tests according to Bonferroni, hence $\alpha = 0.025$.

The rate of perceived exertion also was not found to be normal, therefore two Wilcoxon Signed Ranks Tests were performed as well ($\alpha = 0.025$). The physiological data was found to be normally distributed with the



Shapiro-Wilk test and the ANOVA could be performed with a significance level of $\alpha = 0.05$.

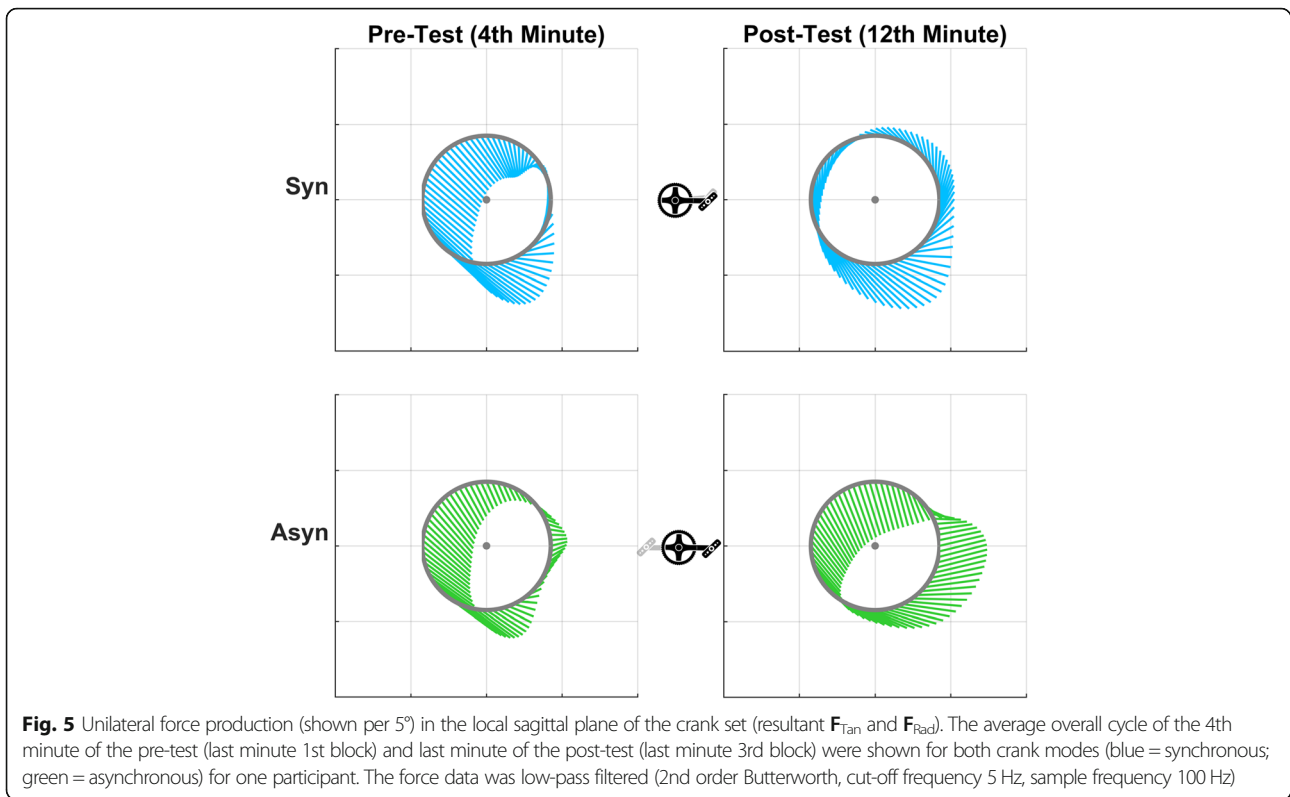
Results

Kinetic effects

In terms of force production, a difference between both crank modes is found for the three force components (F_{tan} , F_{rad} , F_{lat}), as well as FEF (Fig. 4). The tangential force, i.e. the propulsive force component, is significantly higher in the synchronous mode during the lift/push up phases ($F^*(1,11) = 13.06$; $P = 0.018$ for $325-360^\circ$; $P < 0.001$ for $1-80^\circ$). This force is higher in the asynchronous mode for the push/press down phases ($P = 0.001$ for $132-201^\circ$). The radial force is lower in the synchronous mode than in the asynchronous (Figs. 4 and 5), in particular during the lift up ($F^*(1,11) = 13.40$; $P = 0.044$ for $349-360^\circ$; $P = 0.036$ for $1-19^\circ$) and the push up/down

phases ($P < 0.001$ for $46-151^\circ$). The mediolateral force component shows differences in the push/press down phases ($F^*(1,11) = 11.31$; $P = 0.006$ for $126-209^\circ$). The FEF of both hands is higher in the synchronous mode for most of the cycle, except for during the push up/down phases ($F^*(1,11) = 13.56$; $P = 0.001$ for $1-58^\circ$; $P < 0.001$ for $161-360^\circ$).

With practice, no differences were seen in the force effectiveness or the mediolateral force production, however, a significant difference in the force production in the sagittal plane is seen (Fig. 4). A small shift and increase in the tangential force production is seen, as a significant effect ($P < 0.001$) is found in the pull down/up phases ($P < 0.001$ for $248-342^\circ$). The radial force component is changed in the pull/lift up phases ($P < 0.001$ for $288-360^\circ$; $P = 0.034$ for $1-21^\circ$). Especially in the synchronous mode, a decrease is found with practice.

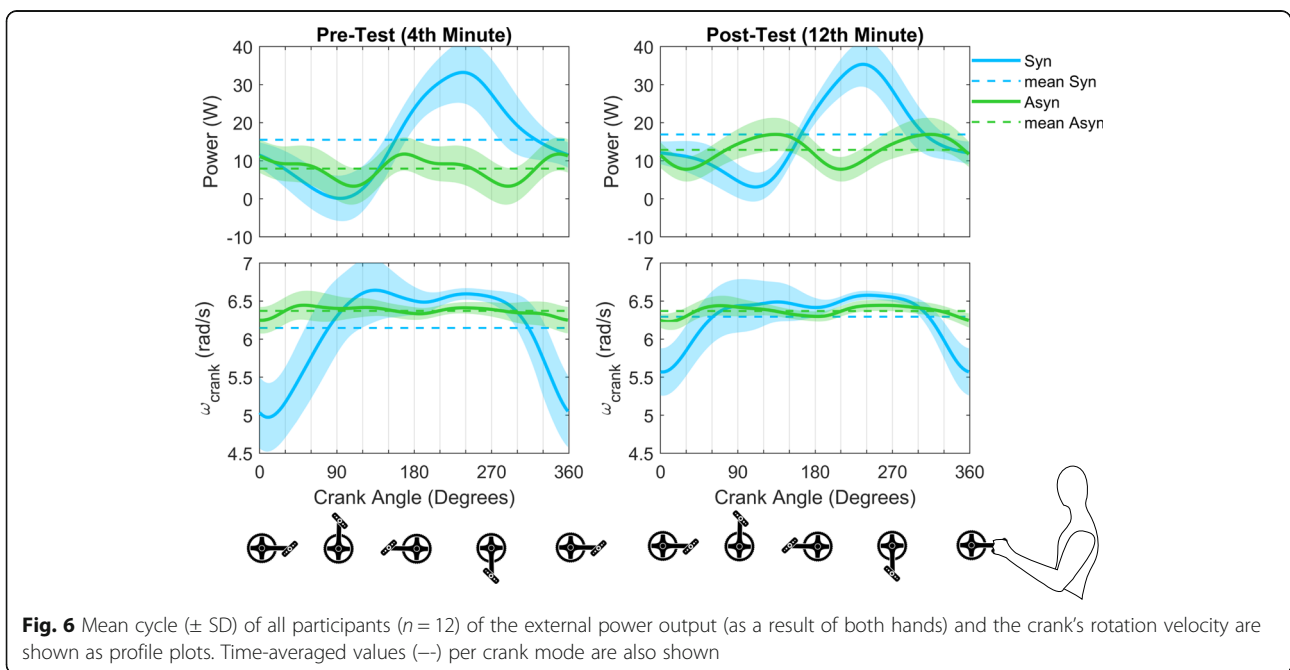


For FEF ($P = 0.007$ for 28–69°), the tangential ($P = 0.016$ for 50–87°) and mediolateral force production ($P = 0.039$ for 57–85°) an interaction effect of practice and crank mode during the push up phase is found. In addition, interaction effects during the pull down/up phases are found for the tangential ($P = 0.001$ for 254–

325°) and mediolateral force production ($P = 0.002$ for 200–298°).

Power production

Surprisingly, the calculated external power output in the same handcycle, subject group and during identical



treadmill speed is significantly different for both crank modes (Fig. 6). A more constant power output is seen in the asynchronous mode compared to the synchronous mode, where less power is produced in the push down phase ($F^*(1,11) = 13.41$; $P = 0.006$ for $94\text{--}139^\circ$) and more in the press down, pull down/up phases ($P < 0.001$ for $165\text{--}292^\circ$). The crank velocity reflects this continuity as well (Fig. 6). The velocity is practically constant in the asynchronous mode, whereas two stages (speed up/slow down) can be recognized in the synchronous mode. The crank's rotation is slower during the lift/push up ($F^*(1, 11) = 16.19$; $P < 0.001$ for $324\text{--}360^\circ$ and $1\text{--}55^\circ$). The crank is faster during the press/pull down phase ($P < 0.001$ for $183\text{--}287^\circ$).

In the pre-test a similar reduction in power output during the push phases is seen for both crank modes. In the post-test, however, an increase in power output is seen in the asynchronous mode, because of practice ($P = 0.007$ for $71\text{--}115^\circ$). A practice effect is also found in the pull phases ($P = 0.003$ for $266\text{--}318^\circ$), due to a change in the power output production in the asynchronous mode. For the synchronous mode, the decrease in crank velocity during the lift/push up phases is less after practice ($P = 0.019$ for $270\text{--}285^\circ$) and a more constant crank rotation is seen ($P = 0.042$ for $202\text{--}208^\circ$). In addition, in the push down phase an interaction effect on the power output is found ($P = 0.040$ for $117\text{--}131^\circ$). For crank velocity, interactions in the push up ($P = 0.040$ for $39\text{--}46^\circ$) and pull down phases ($P = 0.002$ for $237\text{--}267^\circ$) are found.

Kinematic effects

The Wilcoxon Signed Ranks Test to compare both modes revealed that the participants travelled significantly less back and forwards on the treadmill in an asynchronous handcycling mode compared to the synchronous mode ($z = -3.80$, $P < 0.001$, $r = -0.78$). In addition, no other significant differences were found for

travelled distances, hence no practice effects were found. (Fig. 7).

Physiological effects

As shown in Fig. 8, a difference in metabolic response to synchronous and asynchronous handcycling can be found, especially at the pre-test. A significant effect of crank mode was found for mechanical efficiency ($F(1, 11) = 17.71$, $P = 0.001$, $\eta_p^2 = 0.62$) and energy expenditure ($F(1,11) = 6.20$, $P = 0.030$, $\eta_p^2 = 0.36$). For the other variables no significant effects were found.

Practice reduces metabolic cost, especially in the asynchronous handcycling mode. A significant effect of practice was found for mechanical efficiency ($F(1,11) = 42.71$, $P < 0.001$, $\eta_p^2 = 0.78$), energy expenditure ($F(1,11) = 45.79$, $P < 0.001$, $\eta_p^2 = 0.81$), ventilation ($F(1,11) = 12.35$, $P = 0.005$, $\eta_p^2 = 0.53$) and breathing frequency ($F(1,11) = 13.94$, $P = 0.003$, $\eta_p^2 = 0.56$). No significant effects on heart rate or RPE were found.

Discussion

Without any handcycle experience, asynchronous handcycling is indeed less efficient than synchronous handcycling in terms of physiological strain, handcycle force effectiveness and power production. After practice, however, equal values in metabolic cost are found for both crank modes, due to a reduction in the asynchronous mode. The force production is more efficient in the synchronous mode, as remains the case after practice. However, greater learning effect seems apparent in the asynchronous mode. From external power production, crank rotation velocity and the distance travelled front to back on the treadmill, it becomes clear that asynchronous handcycling is more constant throughout the cycle.

Effects of crank modus

The handcycle movement is very complex, as the force production at the handlebars causes two moments, one

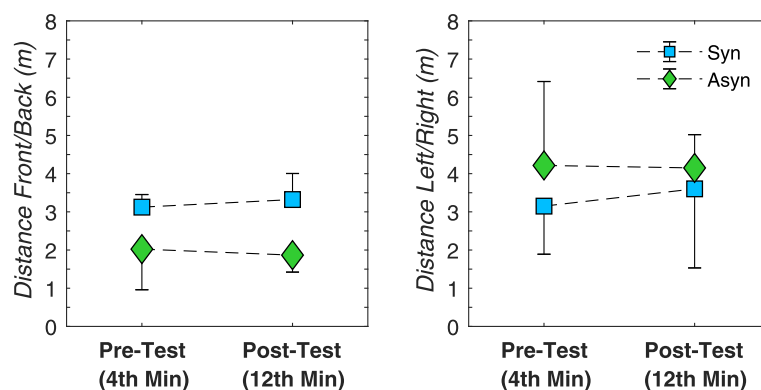


Fig. 7 Mean (\pm SD) of all participant ($n = 12$) for kinematic variables represented as the average value over the last minute of synchronous (blue square) and asynchronous (green diamond) handcycling

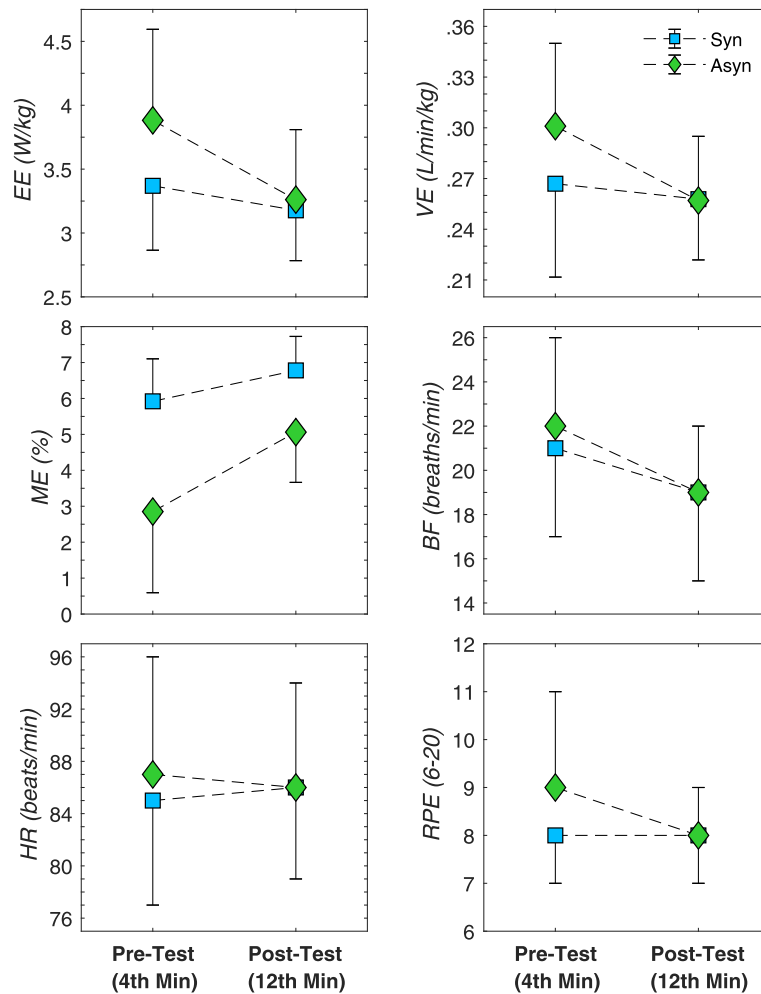
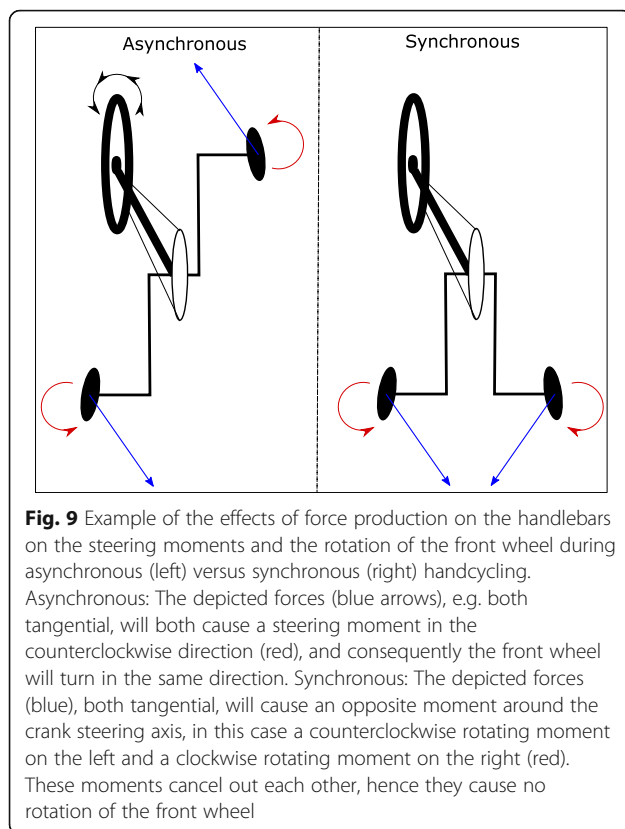


Fig. 8 Mean (\pm SD) of all participant ($n = 12$) for physiological variables represented as the average value over the last minute of synchronous (blue square) and asynchronous (green diamond) handcycling

around the crank axle for propulsion and one around the front fork axle for steering. The user wants to increase the total moment around the crank axle, while reducing the moment around the steering axle. A more tangential force would increase the moment around the crank axle for both modes. However, the steering moment at the left and right handlebar would be in the same direction for the asynchronous mode, causing a rotation of the front wheel, whereas the steering moments would cancel out in the synchronous mode (Fig. 9). Therefore, more control is needed in the asynchronous mode, which should be reflected in the direction of the force produced at the handlebar. It seems that the participants are quite capable to do this, as no significant difference in left-right movement on the treadmill was found.

Compensation strategies to keep the front wheel from rotating seems to take place in the sagittal plane, as we find large differences in the tangential and radial force

components and only small differences in the mediolateral force component between both modes. Our results are in line with earlier findings, as Bafghi et al. (2008) reported a difference in the mean total force produced in the sagittal plane, but no differences in the mediolateral force. The latter forces seem to be out-regulated by co-activation of the muscles in trunk and arms that stabilize the crank system [18]. In the current study, large pulling forces in order to propel the handcycle are found for both modes. In the asynchronous mode, however, a negative tangential force is found in the pull up, lift up and push up phases. As a phase shift of 180° exists in the crank angle for the right hand, the right hand is in the phases where large propulsion force is produced. Thus, the large negative tangential force could be a compensation of the instability (steering moment) caused by the propulsion. In addition, it seems that one pulls the cranks towards the chest to control turning, as the radial force is positive from 30 to 210° and negative for 210 –



30°, as shown in Figs. 4 and 5. Because of these compensation strategies, the effectiveness of force production is less in the asynchronous mode. Especially after practice, the difference in propulsion style between modes becomes clear, as represented in the graphs on the right of Fig. 5.

Surprisingly, we found a difference in the power production between both modes (pre-test: Syn: 15.5 W vs Asyn: 7.3 W; post-test: Syn: 16.9 W vs Asyn: 12.9 W), even when the treadmill was leveled and set at 1.94 m/s for both conditions. One cause might be the difference in the forward-backwards movement on the treadmill. In the synchronous mode, the push phases of the cycle are not efficient, as represented by FEF and the power production. A large pulling force/power production is found, during which the crank velocity increases. It can be assumed that after this acceleration, the crank decelerates, because of the weight of the arms and hands holding the handles, not actively rotating the cranks. This means that participants did not exactly drive 1.94 m/s, but showed an acceleration in the pulling phases and a deceleration in the pushing phases, as was earlier reported for synchronous handcycling [39]. In the asynchronous mode, these acceleration-deceleration phases are not apparent. A more constant propulsion movement is seen in the asynchronous mode, shown by the fact that the power production is better distributed over

the cycle, the crank velocity and the forward-backwards movement of the entire handcycle are more constant. However, at the same treadmill speed, this resulted in lower external power output values for the asynchronous mode. As the EE is the same after practice, one could say that synchronous is more efficient, as more power can be produced with the same amount of metabolic cost, as represented by ME.

Effects of practice

The results of the pre-test are comparable to previous research with a similar set-up, i.e. a handcycle on a treadmill [9, 16–18]. During the pre-test, the synchronous mode shows favorable outcomes over the asynchronous mode with respect to the metabolic costs and force effectiveness. On the other hand, the results show that the difference in metabolic costs is no longer present after practice. As the practice time was too short to evoke physiological training effects, this reduction in metabolic cost might indicate motor learning, as was previously shown for other movements [20–22, 24, 25]. As a cause of the difference between modes, it was suggested that co-activation of the upper body muscles takes place in the asynchronous mode, as one needs to keep the arms in the sagittal plane and therefore reduce the rotation of the trunk [9, 17, 18]. In the synchronous mode the trunk's inertia can be used for the forward propulsion. It seems that before practice, i.e. at the pre-test, the same propulsion style is used for both cycling modes, as represented by force production in the sagittal plane, as shown in the graphs on the left of Fig. 5. The change in the force production pattern, might be another indication of motor learning within this short practice protocol. The small changes in the external force and power production may lead to a reduction of co-activation of the upper body muscles. This could be the cause of the reduction in metabolic costs. To confirm this hypothesis, electromyography measurements of the upper body are needed in future experiments.

Limitations

The current experiment was conducted with able-bodied participants and may not represent the population of wheelchair users. Yet this was intended, as novices in both crank modes were needed to simulate early rehabilitation, in which natural motor learning takes place and could help to understand the underlying biomechanical principles regarding crank mode. In addition, an arm-powered propulsion technique was adopted, in which the trunk is not involved in the propulsion. Therefore, it is more likely that wheelchair users would be able to show similar results. To confirm our results, however, practice effects should be investigated in this population as well.

For wheelchair propulsion, Vegter et al. (2014) showed that the groups of novices could be divided into initially fast and initially slow improvers [4]. In the current project, we did not include these inter individual differences in improving and only analyzed the practice effects on group level. As the main focus was not on inter individual differences, the number of participants were too low for such an analysis.

In our analysis, it was assumed that both hands produce the same amount of force, simultaneously in synchronous and with a 180° shift in the asynchronous mode. However, Verellen et al. showed that this was not the case for a handcycle user with spinal cord injury (level C5–6) as different force profiles for both hands were found [40]. To confirm the changes in force/power profiles found in the current study, one needs to measure the forces at both handlebars.

No conclusive explanation about the causes of the reduction of the metabolic costs could be given by the force and power production solely. Without electromyography measurements, assumptions about co-activation in the arms had to be made.

Conclusion

Without practice, low intensity synchronous handcycling is found to be more efficient than asynchronous handcycling in terms of force effectiveness, mechanical efficiency and metabolic cost. With practice, a great physiological improvement is seen in asynchronous handcycling, whereas synchronous handcycling showed a small increase in efficiency as well. As a result, metabolic costs are equal for both crank modes. The force application effectiveness and mechanical efficiency improved in asynchronous handcycling, but are still not as efficient as synchronous handcycling. Based on the results, we would advise to include a practice period, when comparing both these modes in scientific experiments. For individuals who depend on their upper body for their mobility, we would currently advise a synchronous set-up for daily handcycle use. However, with regard to the external power output and speed fluctuations, it seems beneficial to find a solution that helps with a more constant external power output, leading to reduced speed fluctuations. If the unintended steering moments can be cancelled out by the mechanics of the handcycle, asynchronous handcycling could be an option in the future. More research about the influence of steering on handcycling is needed.

Abbreviations

ANOVA: Analysis of variance; Asyn: Asynchronous handcycle mode; BF: Breathing frequency; CPET: Cardiopulmonary exercise testing; EE: Energy expenditure; FEF: Fraction of Effective Force; F_{lat} : Mediolateral force component; F_{rad} : Radial force component; F_{tan} : Tangential force component; HR: Heart rate; ME: Mechanical efficiency; PAR-Q: Physical Activity Readiness Questionnaire; $P_{external}$: External power output; SPM: One-dimensional

Statistical Parametric Mapping; Syn: Synchronous handcycle mode; VCO_2 : Carbon dioxide output; VE: Ventilation; VO_2 : Oxygen uptake

Acknowledgements

First and foremost, we would like to thank all participants for their time and involvement in the study. Secondly, we would like to thank the technical staff of the Center of Human Movement Sciences for their assistance in the preparation and during the measurements. Finally, we thank all students who helped during the data collection.

Authors' contributions

CK, RV, AH and LvdW designed the study protocol. CK and AH collected the data under supervision of RV. The data analysis was performed by CK, RV, and HW. Results were interpreted by CK, RV and LvdW. The project was performed under supervision of HW and LvdW. The first draft was written by CK. RV, AH and LvdW contributed in revising the manuscript. All authors read and approved the final manuscript.

Funding

Not applicable.

Availability of data and materials

The datasets used in the current study can be provided by the corresponding author on reasonable request.

Ethics approval and consent to participate

All participants signed informed consent before the onset of the study after receiving detailed verbal and written information. The local ethical committee of the Center for Human Movement Sciences, University Medical Center Groningen, University of Groningen approved the study protocol.

Consent for publication

The consent for scientific publications was included in the informed consent to participate.

Competing interests

The authors declare that they have no competing interests.

Author details

¹Centre for Human Movement Sciences, University of Groningen, University Medical Centre Groningen, Antonius Deusinglaan 1, 9713 AV Groningen, the Netherlands. ²Department of Motion Science, Institute of Sports Science, University of Münster, Horstmarer Landweg 62b, 48149 Münster, Germany. ³Centre for Rehabilitation, University of Groningen, University Medical Centre Groningen, Hanzeplein 1, 9713 GZ Groningen, the Netherlands.

Received: 3 July 2019 Accepted: 13 February 2020

Published online: 24 February 2020

References

1. Flemmer CL, Flemmer RC. A review of manual wheelchairs. *Disabil Rehabil Assist Technol*. 2016;11:177–87 Taylor & Francis.
2. Arnet U, van Drongelen S, Veeger DH, van der Woude LHV. Force application during handcycling and handrim wheelchair propulsion: an initial comparison. *J Appl Biomech*. 2013;29:687–95 Swiss Paraplegic Research, Nottwil, Switzerland, and Research Institute MOVE, Faculty of Human Movement Sciences, VU University Amsterdam, The Netherlands.
3. Dallmeijer AJ, Zentgraaff IDB, Zijp NI, van der Woude LHV. Submaximal physical strain and peak performance in handcycling versus handrim wheelchair propulsion. *Spinal Cord*. 2004;42:91–8.
4. Vegter RJK, Lamoth CJ, de Groot S, Veeger DHEJ, van der Woude LHV. Inter-individual differences in the initial 80 minutes of motor learning of handrim wheelchair propulsion. *PLoS One*. 2014;9:e89729 Bacurau RFP, editor. Public Library of Science.
5. de Groot S, de Bruin M, Noomen SP, van der Woude LHV. Mechanical efficiency and propulsion technique after 7 weeks of low-intensity wheelchair training. *Clin Biomech*. 2008;23:434–41 Elsevier.
6. Arnet U, van Drongelen S, Scheel-Sailer A, van der Woude L, Veeger DH. Shoulder load during synchronous handcycling and handrim wheelchair propulsion in persons with paraplegia. *J Rehabil Med*. 2012;44:222–8 Swiss Paraplegic Research, Nottwil, Switzerland. ursina.arnet@paranet.ch.

7. Marais G, Dupont L, Mailliet M, Weissland T, Vanvelcenaher J, Pelayo P. Spontaneously chosen crank rate variations in submaximal arm exercise with inexperienced subjects. Effects on cardiorespiratory and efficiency parameters. *Int J Sports Med.* 2002;23:120–4 Laboratoire d'Etudes de la Motricité Humaine, Faculté des Sciences du Sport et de l'Éducation Physique, Université de Lille 2, 9 rue de l'université, 59790 Ronchin, France. gmarais@hp-sc.univ-lille2.fr.
8. van Drongelen S, Maas JC, Scheel-Sailer A, Van Der Woude LHV. Submaximal arm crank ergometry: Effects of crank axis positioning on mechanical efficiency, physiological strain and perceived discomfort. *J Med Eng Technol.* 2009;33:151–7 Taylor & Francis.
9. van der Woude L, Bosmans I, Bervoets B, Veeger DH. Handcycling: different modes and gear ratios. *J Med Eng Technol.* 2000;24:242–9 Institute for Fundamental and Clinical Human Movement Sciences, Faculty of Human Movement Sciences, Vrije Universiteit, Amsterdam, The Netherlands.
10. Goosey-Tolfrey VL, Sindall P. The effects of arm crank strategy on physiological responses and mechanical efficiency during submaximal exercise. *J Sports Sci.* 2007;25:453–60 Institute of Biophysical and Clinical Research into Human Movement, Department of Exercise and Sport Science, Manchester Metropolitan University, Alsager, UK. v.tolfrey@mmu.ac.uk.
11. WHO. International Classification of Functioning, Disability and Health. Geneva: World Health Organisation; 2001.
12. van der Woude L, Dallmeijer AJ, Janssen TWJ, Veeger DH. Alternative modes of manual wheelchair ambulation: an overview. *Am J Phys Med Rehabil.* 2001;80:765–77.
13. Hopman MTE, van Teeffelen WM, Brouwer J, Houtman S, Binkhorst RA. Physiological responses to asynchronous and synchronous arm-cranking exercise. *Eur J Appl Physiol Occup Physiol.* 1995;72:111–4.
14. Mossberg K, Willman C, Topor M, Crook H, Patak S. Comparison of asynchronous versus synchronous arm crank ergometry. *Spinal Cord.* 1999; 37:569–74.
15. Faupin A, Gorce P, Meyer C. Effects of type and mode of propulsion on hand-cycling biomechanics in nondisabled subjects. *J Rehabil Res Dev.* 2011;48:1049–60 Université du Sud Toulon-Var. Laboratoire HandiBio EA 4322, avenue de l'université, BP20132, 83957 La Garde Cedex, France. faupin.arnaud@aliceadsl.fr.
16. van der Woude L, Horstman A, Faas P, Mechlielsen S, Bafghi HA, de Koning JJ. Power output and metabolic cost of synchronous and asynchronous submaximal and peak level hand cycling on a motor driven treadmill in able-bodied male subjects. *Med Eng Phys.* 2008;30:574–80 Faculty of Human Movement Sciences, Research Institute MOVE, Institute for Fundamental and Clinical Human Movement Sciences, VU University, Amsterdam, The Netherlands. ldwoude@fbw.vu.nl.
17. Dallmeijer AJ, Ottjes L, de Waardt E, van der Woude LH. A physiological comparison of synchronous and asynchronous hand cycling. *Int J Sports Med.* 2004;25:622–6.
18. Bafghi HA, de Haan A, Horstman A, Van Der Woude L. Biophysical aspects of submaximal hand cycling. *Int J Sports Med.* 2008;29:630–8 Faculty of Human Movement Sciences, Research Institute MOVE, VU University Amsterdam, Amsterdam, The Netherlands.
19. Sparrow WA, Newell KM. Metabolic energy expenditure and the regulation of movement economy. *Psychon Bull Rev.* 1998;5:173–96 Psychonomic Society Inc.
20. Sparrow WA, Newell KM. Energy expenditure and motor performance relationships in humans learning a motor task. *Psychophysiology.* 1994;31: 338–46 Available from: <http://www.ncbi.nlm.nih.gov/pubmed/10690914>.
21. Lay BS, Sparrow WA, Hughes KM, O'Dwyer NJ. Practice effects on coordination and control, metabolic energy expenditure, and muscle activation. *Hum Mov Sci.* 2002;21:807–30 Available from: <http://www.ncbi.nlm.nih.gov/pubmed/12620721>.
22. Majed L, Heugas A-M, Chamon M, Siegler IA. Learning an energy-demanding and biomechanically constrained motor skill, racewalking: movement reorganization and contribution of metabolic efficiency and sensory information. *Hum Mov Sci.* 2012;31:1598–614 Available from: <https://linkinghub.elsevier.com/retrieve/pii/S0167945712000887>.
23. Vegter RJK, de Groot S, Lamoth CJ, Veeger DH, van der Woude LHV. Initial skill Acquisition of Handrim Wheelchair Propulsion: a new perspective. *IEEE Trans Neural Syst Rehabil Eng.* 2014;22:104–13.
24. Vegter RJK, Hartog J, de Groot S, Lamoth CJ, Bekker MJ, van der Scheer JW, et al. Early motor learning changes in upper-limb dynamics and shoulder complex loading during handrim wheelchair propulsion. *J Neuroeng Rehabil.* 2015;12:26 BioMed Central.
25. de Klerk R, Lutjebroer T, Vegter RJK, van der Woude LHV. Practice-based skill acquisition of pushrim-activated power-assisted wheelchair propulsion versus regular handrim propulsion in novices. *J Neuroeng Rehabil.* 2018;15: 56 BioMed Central.
26. Thomas S, Reading J, Shephard RJ. Revision of the physical activity readiness questionnaire (PAR-Q). *Can J Sport Sci.* 1992;17:338–45.
27. Arnet U, van Drongelen S, Veeger DHEJ, van der Woude LH. Are the force characteristics of synchronous handcycling affected by speed and the method to impose power? *Med Eng Phys.* 2012;34:78–84 Swiss Paraplegic Research, Guido A. Zachstr 4, 6207 Nottwil, Switzerland. ursina.arnet@paranet.ch: IPEM. Published by Elsevier Ltd.
28. Borg G. Perceived exertion as an indicator of somatic stress. *Scand J Rehabil Med.* 1970;2:92–8.
29. Verellen J, Theisen D, Vanlandewijck Y. Influence of crank rate in hand cycling. *Med Sci Sports Exerc.* 2004;36:1826–31 Department of Rehabilitation Sciences, Faculty of Physical Education and Physiotherapy, Catholic University of Leuven, Leuven, Belgium.
30. Kraaijenbrink C, Vegter RJK, Hensen AHR, Wagner H, van der Woude LHV. Different cadences and resistances in submaximal synchronous handcycling in able-bodied men: effects on efficiency and force application. *PLoS One.* 2017;12:1–15.
31. Kraaijenbrink C, Vegter RJK, Hensen AHR, Wagner H, van der Woude L. Effects of gear, imposed resistance and crank mode on the mechanical efficiency and physiological parameters during sub-maximal handcycling in healthy men. *J Sci Cycl.* 2017;6:43–4 Available from: [http://www.jsc-journal.com/ojs/index.php?journal=JSC&page=article&op=view&path\[\]=355](http://www.jsc-journal.com/ojs/index.php?journal=JSC&page=article&op=view&path[]=355). Cited 2018 Feb 2.
32. Veeger DH, van der Woude LHV, Rozendal RH. The effect of rear wheel camber in manual wheelchair propulsion. *J Rehabil Res Dev.* 1989;26:37–46.
33. van Drongelen S, van den Berg J, Arnet U, Veeger DH, van der Woude LHV. Development and validity of an instrumented handbike: initial results of propulsion kinetics. *Med Eng Phys.* 2011;33:1167–73 Swiss Paraplegic Research, Guido A. Zachstrasse 4, Nottwil, Switzerland. stefan.vandrongelen@paranet.ch: IPEM. Published by Elsevier Ltd.
34. Krämer C, Schneider G, Böhm H, Klöpfer-Krämer I, Senner V. Effect of different handgrip angles on work distribution during hand cycling at submaximal power levels. *Ergonomics.* 2009;52:1276–86 Department of Sport Equipment and Material, Technische Universität München, Munich, Germany. kraemer@sp.tum.de.
35. Verellen J, Meyer C, Janssens L, Vanlandewijck Y. The impact of spinal cord injury lesion level on force generation effectiveness during handcycling. *Anal Perform Determ handcycling.* Leuven; 2012. p. 79–94.
36. Veeger DH, van der Woude LHV, Rozendal RH. Effect of handrim velocity on mechanical efficiency in wheelchair propulsion. *Med Sci Sports Exerc.* 1992; 24:100–7.
37. Garby L, Astrup A. The relationship between the respiratory quotient and the energy equivalent of oxygen during simultaneous glucose and lipid oxidation and lipogenesis. *Acta Physiol Scand.* 1987;129:443–4 ENGLAND.
38. Pataky T. Introduction — spm1d 0.4 documentation. 2018. Available from: <http://www.spm1d.org/>. Cited 2019 Jan 30
39. Verellen J, Meyer C, Reynders S, Van Biesen D, Vanlandewijck Y. Consistency of within-cycle torque distribution pattern in hand cycling. *J Rehabil Res Dev.* Department of Rehabilitation Sciences, Katholieke Universiteit Leuven, Tervuursevest, 101, 3001 Heverlee, Leuven, Belgium. joeri.verellen@faber.kuleuven.be; 2008;45:1295–302
40. Verellen J, Janssens L, Meyer C, Vanlandewijck Y. Development and application of a handbike ergometer to measure the 3D force generation pattern during arm crank propulsion in realistic handcycling conditions. *Sport Technol.* 2012;5:65–73 Taylor & Francis Group.

Publisher's Note

Springer Nature remains neutral with regard to jurisdictional claims in published maps and institutional affiliations.