

## Sequence analysis

**Characterization of the N-ATPase, a distinct, laterally transferred Na<sup>+</sup>-translocating form of the bacterial F-type membrane ATPase**Daria V. Dibrova<sup>1,2</sup>, Michael Y. Galperin<sup>3,\*</sup> and Armen Y. Mulikidjanian<sup>1,4,\*</sup><sup>1</sup>School of Physics, University of Osnabrück, D-49069 Osnabrück, Germany, <sup>2</sup>School of Bioengineering and Bioinformatics, Moscow State University, Moscow 119992, Russia, <sup>3</sup>NCBI, National Library of Medicine, National Institutes of Health, Bethesda, MD 20894, USA and <sup>4</sup>A.N. Belozersky Institute of Physico-Chemical Biology, Moscow State University, Moscow 119992, Russia

Associate Editor: Alex Bateman

**ABSTRACT**

An analysis of the distribution of the Na<sup>+</sup>-translocating ATPases/ATP synthases among microbial genomes identified an atypical form of the F<sub>1</sub>F<sub>0</sub>-type ATPase that is present in the archaea *Methanosarcina barkeri* and *M. acetivorans*, in a number of phylogenetically diverse marine and halotolerant bacteria and in pathogens *Burkholderia* spp. In complete genomes, representatives of this form (referred to here as N-ATPase) are always present as second copies, in addition to the typical proton-translocating ATP synthases. The N-ATPase is encoded by a highly conserved *atpDCQRBEFAG* operon and its subunits cluster separately from the equivalent subunits of the typical F-type ATPases. N-ATPase *c* subunits carry a full set of sodium-binding residues, indicating that most of these enzymes are Na<sup>+</sup>-translocating ATPases that likely confer on their hosts the ability to extrude Na<sup>+</sup> ions. Other distinctive properties of the N-ATPase operons include the absence of the *delta* subunit from its cytoplasmic sector and the presence of two additional membrane subunits, AtpQ (formerly gene 1) and AtpR (formerly gene X). We argue that N-ATPases are an early-diverging branch of membrane ATPases that, similarly to the eukaryotic V-type ATPases, do not synthesize ATP.

**Contact:** galperin@ncbi.nlm.nih.gov; amulkid@uos.de**Supplementary information:** Supplementary data are available at *Bioinformatics* online.

Received on March 9, 2010; revised on April 16, 2010; accepted on April 21, 2010

**1 INTRODUCTION**

F<sub>1</sub>F<sub>0</sub>-type (F-type) and V/A-type ATPases are membrane-anchored rotary enzymes that couple translocation of H<sup>+</sup> or Na<sup>+</sup> ions across the membrane to the synthesis or hydrolysis of ATP. Although most of their subunits are evolutionarily related, the two classes of ATPases have clear differences in structure and phylogenetic distribution: F-type ATPases are found in bacteria, mitochondria and chloroplasts, whereas V/A-type ATPases are found in eukaryotic cell membranes (in particular, vacuoles), as well as in all archaea and in some bacteria (Hilaro and Gogarten, 1998; Forgac, 2007; von Ballmoos *et al.*, 2008; Mulikidjanian *et al.*, 2009). V/A-type ATPases are often subdivided into two classes based (i) on the ability of the prokaryotic (A-type) enzyme to function in the direction of ATP synthesis and (ii) presence of additional subunits in the

eukaryotic (V-type) enzyme that normally functions only as an ion-translocating ATPase, using the energy of ATP hydrolysis to acidify cellular compartments (Hilaro and Gogarten, 1998; Forgac, 2007).

Structural characterization of the Na<sup>+</sup>-binding sites in the *c*-subunits of F- and V-type ATPases (Meier *et al.*, 2005; Murata *et al.*, 2005) allowed unequivocal assignment of the cation specificity for the membrane ATPases encoded in numerous sequenced genomes: only those *c*-subunits that contain full sets of Na<sup>+</sup> ligands appeared to transport Na<sup>+</sup>, the loss of at least one of those ligands correlated with the loss of Na<sup>+</sup> specificity (Mulikidjanian *et al.*, 2008a; Meier *et al.*, 2009).

In the view of several reports on the sodium dependence of energy-coupled reactions in cyanobacteria (Willey *et al.*, 1987; Skulachev, 1988; Pogoryelov *et al.*, 2003), we have searched cyanobacterial genomes for the Na<sup>+</sup>-translocating ATPases. We found several apparently Na<sup>+</sup>-dependent cyanobacterial ATPases, but always as second copies, in addition to the H<sup>+</sup>-translocating ATP synthases. Here, we report the common properties of these ATPases, which are encoded in apparently highly mobile operons and have a set of specific traits that qualify them as a separate subfamily of the F-type ATPases. Since these ATPases, besides forming a *novel* subfamily, are always encoded *next to* the typical rotary ATPases and are predominantly Na<sup>+</sup>-dependent, we refer to them hereafter as N-ATPases.

**2 METHODS**

Phylogenetic distribution of the N-ATPase operons was deduced from protein BLAST (Altschul *et al.*, 1997) searches against the NCBI's RefSeq database (Pruitt *et al.*, 2009) (last searched February 1, 2010) and verified by examining gene neighborhoods of the retrieved ORFs and by checking for the presence of the N-ATPase-specific subunit AtpR. Phylogenetic trees were constructed using the neighbor-joining algorithm with MEGA (Kumar *et al.*, 2008). Multiple alignments were constructed from BLAST outputs with manual editing. Transmembrane segments were predicted using TMHMM (Krogh *et al.*, 2001). Sequence logos were drawn with WebLogo (Crooks *et al.*, 2004).

**3 RESULTS**

Search of the NCBI's RefSeq database (Pruitt *et al.*, 2009) for cyanobacterial *c* (proteolipid) subunits that would have a full set of Na<sup>+</sup>-binding ligands (Mulikidjanian *et al.*, 2008a; Meier *et al.*, 2009) returned five hits, all coming from marine cyanobacteria (Supplementary Fig. S1a). In each case, the operon encoding the

\*To whom correspondence should be addressed.

Na<sup>+</sup>-binding *c* subunit was present in the genome along with another ATPase operon, encoding an H<sup>+</sup>-translocating F-type ATPase. As depicted below for *Synechococcus* sp. PCC 7002, an alignment of the Na<sup>+</sup>- and H<sup>+</sup>-binding *c*-subunits (top and bottom, respectively) from the same cyanobacteria revealed a Glu residue of the Gln residue (shown in blue) that serves as a Na<sup>+</sup> ligand (uncharged residues of the transmembrane segments are highlighted in yellow, Na<sup>+</sup> and H<sup>+</sup> ligands are labeled with asterisks) Among the 4084

B1XRK4\_SYN2P2: <sup>24</sup>IGPALGEGMA-x<sub>25</sub>-LAMV**ESTAI**YCLV<sup>71</sup>  
 \* \* \* \* \*  
 ATPL\_SYN2P2: <sup>22</sup>IGPGIGQ**GNA**-x<sub>25</sub>-LAFME**ALTI**YGLV<sup>59</sup>

*c*-subunit sequences currently listed in the Pfam family ATP-synt\_C (PF00137; Finn *et al.*, 2010), only 227 (5.5%) contain a Glu residue in that position and only ~1% combine it with a typical ESTxxY Na<sup>+</sup>-binding motif (Supplementary Fig. S1). The Na<sup>+</sup>-dependent ATPase operons in all cyanobacteria had a similar gene order, with a single gene insertion in *Acaryochloris marina* and a two-gene insertion in the two strains of *Cyanothece* sp. (Supplementary Fig. S2).

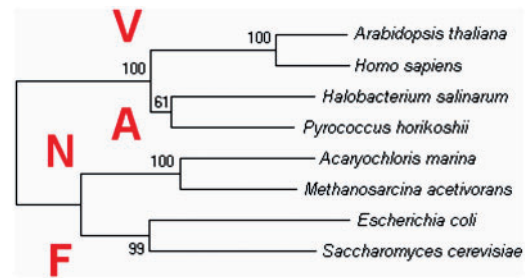
### 3.1 Always the second: conservation and distinctive properties of the N-ATPase

A search of the complete genome database identified homologous N-ATPase operons in some representatives of the bacterial phyla *Aquificae*, *Chlorobi* and *Planctomycetes*, in certain members of  $\alpha$ -,  $\beta$ -,  $\gamma$ - and  $\delta$ -subdivisions of *Proteobacteria*, and in two archaea, *Methanosarcina barkeri* and *M. acetivorans* (see Supplementary Fig. S2). All these operons had the same *atpDCI-urf2-atpBEFAG* gene order, encoding, respectively,  $\beta$ -,  $\epsilon$ -, 1-, Urf2-, a-, c-, b-,  $\alpha$ - and  $\gamma$ -subunits of this particular F-type ATPase, first described in *M. barkeri* by Sumi *et al.* (1997). The only exception outside of cyanobacteria was *Persephonella marina*, a member of the *Aquificae*, which has an N-ATPase operon with the *urf2-atpBEFAGDCI* gene order and also harbors operons for F- and A-type ATPases (Supplementary Fig. S2).

Identification of the N-ATPase operons in diverse microorganisms was simplified by the fact that these operons are always present in the genomes as second copies alongside operons that encode typical H<sup>+</sup>-transporting F-type ATPases (in *M. barkeri* and *M. acetivorans*, A-type ATPases). In contrast, most N-ATPase *c*-subunits contain full sets of Na<sup>+</sup> ligands, indicating that these enzymes are specific for Na<sup>+</sup> ions. Just like the cyanobacterial Na<sup>+</sup>-binding *c*-subunits, *c*-subunits of most N-ATPases had Glu residues in the middle of both transmembrane helices (Supplementary Fig. S1).

The same subunits of the N-ATPases from diverse bacteria are closely related and form distinct branches on the phylogenetic trees, well separated from the equivalent subunits of the F- and V-type ATPases (Fig. 1 and Supplementary Fig. S3, see also Supplementary Fig. 5 in Swingley *et al.*, 2008). Phylogenetic trees built for individual N-ATPase subunits showed similar topologies, so that the whole N-ATPase operons appeared to co-evolve (Supplementary Fig. S4).

Another distinct trait of the N-ATPase operons was the presence of an extra gene, *urf2* (Sumi *et al.*, 1997). Its product is currently annotated as ‘F1/F0 ATPase, *Methanosarcina* type, subunit 2’ (F1F0\_chp\_2, TIGR03165, DH Haft, December 4, 2006) in the JCVI’s Comprehensive Microbial Resource (Davidsen *et al.*, 2010)



**Fig. 1.** A neighbor-joining tree comparing  $\alpha$ -subunits of N-ATPases with  $\alpha$ -subunits of F-type ATPases and B-subunits of A- and V-type ATPases. See Supplementary Fig. S3 for the full tree.

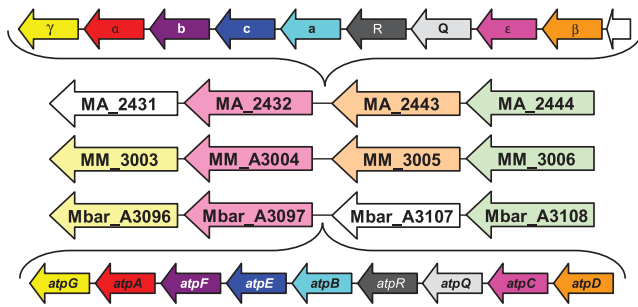
and as ‘ATPase\_F1/F0-cplx\_su2\_Meth-typ’ (IPR017581) in the InterPro database (Hunter *et al.*, 2009), whereas UniProt uniformly annotates these proteins as ‘Putative uncharacterized protein’. The *urf2* (hereafter *atpR*) gene was found in every N-ATPase operon and could be used as a tell-tale sign of these operons. Its product is a hydrophobic protein with three predicted transmembrane segments, two of which carry conserved Arg residues (Supplementary Fig. S5). Presence of charged residues in the hydrophobic core of the membrane is rare and usually indicative of a functional role.

The N-ATPase operons also include so-called gene 1 (hereafter *atpQ*) that encodes another distinct membrane protein. Although this gene was originally marked as *atpI* (Sumi *et al.*, 1997) and is occasionally still labeled this way (Saum *et al.*, 2009), its product shows no statistically significant sequence similarity to the genuine AtpI (Uncl) proteins, previously described in the genomes of *Escherichia coli* and other model organisms. In accordance with their distinct sequences, AtpI and AtpQ proteins are assigned to two different Pfam families, PF03899 and PF09527, respectively, and to two different COGs, COG3312 and COG5536 in the CDD database (Marchler-Bauer *et al.*, 2009). In contrast to *atpR*, the *atpQ* gene is not limited to the N-ATPase operons.

While the N-ATPase operon lacks the *atpH* gene that encodes the  $\delta$ -subunit of the F-type ATPase, its *atpF* gene (*atpF<sub>N</sub>*) is unusually long (Sumi *et al.*, 1997). We were able to align C-terminal regions of the AtpF<sub>N</sub> and AtpH gene products (Supplementary Fig. S6). This showed that N-ATPase contains at least part of the  $\delta$ -subunit, in agreement with the earlier analyses (Saum *et al.*, 2009).

### 3.2 Lateral transfer of N-ATPase genes

Presence of the N-ATPase operon in the genomes of *M. barkeri* and *M. acetivorans*, but not in the closely related *M. mazei*, suggested that this operon had been acquired via lateral gene transfer. This suggestion is consistent with the gene neighborhoods of the *atpDCQRBEFG* operons in *M. barkeri* and *M. acetivorans* (Fig. 2) and the absence of these operons in any other archaeal genomes sequenced so far. Gene neighborhoods of the N-ATPase operons in various bacteria are also consistent with the insertion of this operon (Supplementary Fig. S7). The widespread presence of the N-ATPase genes among diverse bacteria deprecates the historical designation of these enzymes as ‘archaeobacterial F<sub>1</sub>F<sub>0</sub>-ATPases’. The strict conservation of the gene order and co-linearity of the phylogenetic trees for distinct N-ATPase subunits suggests that the whole operon is being transferred as a single unit. However, the GC content of the N-ATPase operons shows a good correlation with the average



**Fig. 2.** Conserved gene neighborhoods in *M. acetivorans*, *M. mazei* and *M. barkeri*, indicating the points of insertion of the N-ATPase operons in the former (top line, showing the subunit names) and the latter (bottom line, showing the gene names). Orthologous genes are indicated with the same colors. The arrows do not reflect the lengths of the genes.

GC content of the host genomes (Supplementary Fig. S8), indicating either a relatively ancient gene transfer or a rapid adaptation of the N-ATPase genes to their host environment. An additional indication of the lateral mobility of the N-ATPase operon is its presence on plasmids, pREB4 in *A. marina* and pAQ7 in *Synechococcus* sp. PCC 7002. These data might be related to the earlier functional evidence of the presence of two ion-translocating ATPases in *M. mazei* Gö1. While the A-type ATP synthase was apparently H<sup>+</sup>-dependent, the second, F-type ATPase appeared to be Na<sup>+</sup>-translocating (Becher and Müller, 1994; Pisa *et al.*, 2007). Although this second ATPase has not been found in the sequenced genome of *M. mazei* (Fig. 2), the respective genes could be plasmid-borne, as is the case of N-ATPases in at least two cyanobacteria.

#### 4 DISCUSSION

Following the description of an ‘archaeobacterial F<sub>1</sub>F<sub>0</sub>-ATPase’ in *M. barkeri* (Sumi *et al.*, 1997), the presence of a ‘Methanosarcina-like’ F-ATPase operon was repeatedly noted in bacterial genomes (Glöckner *et al.*, 2003; McInerney *et al.*, 2007; Swingley *et al.*, 2008), although the exact function(s) of these enzymes and their cation specificity remained obscure. McInerney *et al.* (2007) noted two F-type ATPases encoded in the genome of *Syntrophus aciditrophicus* and suggested that both of them were Na<sup>+</sup>-translocating (incidentally, the F-type ATPase of this organism is definitely H<sup>+</sup>-specific, whereas the cation specificity of its N-ATPase is unknown; it might be specific for Na<sup>+</sup>, see below). In their analysis of the *A. marina* genome, Swingley *et al.* (2008) noted the presence of a plasmid-encoded ‘set of ATP synthase genes that were arranged into a unique operon ... conserved with full synteny in a remarkable array of organisms, including cyanobacteria, archaea, planctomycetes, chlorobi and proteobacteria’. The authors noted that the  $\alpha$ -subunits encoded in these operons clustered together on a phylogenetic tree and suggested that these enzymes formed a separate new family of ATP synthases. However, they slightly overstated their case by claiming that its ‘individual proteins do not clearly fit into any of the described families’ (Swingley *et al.*, 2008). They also disputed the idea that these enzymes were Na<sup>+</sup>-translocating. In addition, the key observation by Daniel Haft that these enzymes always ‘represent a second F<sub>1</sub>/F<sub>0</sub> ATPase system’ has only been published online in the JCVI’s Comprehensive Microbial Resource (Davidsen *et al.*, 2010).

As a result, there still exists a significant confusion as to the phylogenetic distribution, organization and the functional role(s) of these enzymes.

The alignment in Supplementary Fig. S1 shows that, despite the doubts of Swingley *et al.* (2008), the *c* subunit of the *A. marina* N-ATPase has a full set of Na<sup>+</sup>-binding ligands, including the recently recognized additional Thr residue of the ESTxxY motif (Mulikidjanian *et al.*, 2008a; Meier *et al.*, 2009). While this residue is missing in *c*-subunits of several N-ATPases, including the one from *S. aciditrophicus*, a Glu residue is present instead of the Na<sup>+</sup>-coordinating Gln residue in the first transmembrane helix of the *c* subunit of nearly all N-ATPases (Supplementary Fig. S1). As has been noted previously (Meier *et al.*, 2009; Saum *et al.*, 2009), this Glu residue could potentially provide two ligands for the Na<sup>+</sup> ion and thereby complete the Na<sup>+</sup> coordination shell. If so, all these N-ATPases would end up being capable of binding Na<sup>+</sup> ions.

A hallmark of the N-ATPase operons is the presence of the *atpR* gene. Because of the low dielectric permittivity of the membrane, the strategic positioning of two Arg residues of AtpR in the hydrophobic core of the membrane (Supplementary Fig. S5) implies the presence of negatively charged residues in their vicinity. Given the absence in the N-ATPase operons of the *atpI* gene, whose product was recently shown to interact with the *c*-ring (Suzuki *et al.*, 2007), we suggest that the product of the AtpR gene serves essentially the same function, regulating N-ATPase assembly and/or its activity. Just like AtpI assists *c*-ring assembly by directly interacting with the *c*-subunits (Suzuki *et al.*, 2007), AtpR could do that through the interaction of its two Arg residues with N-ATPase-specific *c*-subunits, most of which carry two Glu residues in the middle of their transmembrane helices (Supplementary Fig. S1).

The observation that N-ATPases are always found alongside typical F- or A-type ATPases suggests that the N-ATPases cannot functionally replace those enzymes in their role as ATP synthases. Indeed, in *M. acetivorans*, deletion of the N-ATPase operon had no visible effect on cell growth or ATP synthesis, whereas a mutant lacking the A-ATP synthase genes could not be obtained (Saum *et al.*, 2009). We conclude that, similarly to the eukaryotic V-ATPases, the N-ATPases do not catalyze ATP synthesis, which leaves ATP-driven ion pumping as the most plausible function for these enzymes. By analogy with V-ATPases, the N-ATPase *c*-oligomer ring can be expected to consist of a smaller number of *c*-subunits than the *c*-oligomer ring of F-type ATP synthases.

Acquisition of an operon capable of extrusion of Na<sup>+</sup> ions would be beneficial to the marine bacteria and other organisms living in high-salt environments. Accordingly, many N-ATPase-encoding bacteria are either marine organisms or grow in the presence of salt. Since Na<sup>+</sup>-translocating ATPases can also translocate protons (von Ballmoos *et al.*, 2008), the N-ATPases could in principle function as outward proton pumps in low-sodium and/or acidic environments. A typical N-ATPase operon (with untranslated AtpR) has been found in an industrial strain of *Pseudomonas veronii* growing on 2-butanone (Onaca *et al.*, 2007). The presence of N-ATPase genes in such pathogens as *Burkholderia mallei* appears to be inherited from their free-living relatives and might be related to their survival in blood.

Using a larger set of sequences than the one used by Swingley *et al.* (2008), we have confirmed that N-ATPases branch separately from other F-type ATPases (Fig. 1, Supplementary Fig. S3).

This separate branching suggests a possible early divergence of the N-ATPases, which is compatible with the following, supposedly ancestral traits of these enzymes:

- (i) Both AtpF<sub>N</sub> subunit of the N-ATPase and the E subunit of the peripheral stalk of the V/A-type ATPases correspond to a fusion of b- and δ-subunits of the typical F-ATPases (Pallen et al., 2006).
- (ii) The presence of the second membrane-embedded Glu residue is consistent with the evolution of the c-subunit from a duplication of an amphiphilic helix that contained a Glu residue in the middle (Davis, 2002). Similar two-Glu c-subunits are found in the A-type ATPases of methanogens and F-type ATPases of *Thermotogae*.
- (iii) Outward pumping of Na<sup>+</sup> ions, the predicted function of N-ATPases, appears to be an ancient trait and has been previously suggested as a function of the common ancestor of the F- and V-type ATPases (Mulkiđjanian et al., 2007; 2008a, b; 2009).

All these features, which N-ATPases share either with V/A-ATPases—to the exclusion of most F-ATPases—or with the putative common ancestor of all rotary ATPases, suggest that N-ATPases represent a distinct early-diverging family of rotary ATPases. Thus, the Na-translocating common ancestor of all F-type ATPases apparently gave rise to two different families of ATPases: (i) the reversible ATPases/ATP synthases ('genuine' F-ATPases) and (ii) ATP-driven ion pumps (N-ATPases).

In conclusion, the N-ATPases (until now usually referred to as 'archaeobacterial F<sub>1</sub>F<sub>o</sub>-ATPases') are encoded in an apparently highly mobile operon that, most likely, confers on its hosts the ability of ATP-driven outward pumping of Na<sup>+</sup> ions, which complements the H<sup>+</sup> specificity of the native chromosome-encoded F-ATPase (or A-ATPase). We predict that, similarly to the eukaryotic V-ATPases, the N-ATPases do not catalyze ATP synthesis, which is why an N-ATPase is never found alone in a genome, only as the second enzyme in cells that already encode an F-type or a A-type ATP synthase. Accordingly, caution should be exercised when referring to their components as subunits of the ATP synthase. We believe that experimental verification of the predicted functions of the N-ATPases would be useful for the proper annotation of these interesting enzymes and could also help in understanding the evolution of energy conservation mechanisms.

## ACKNOWLEDGEMENTS

We thank Eugene Koonin and Thomas Meier for discussion.

*Funding:* Deutsche Forschungsgemeinschaft (to D.V.D., A.Y.M.); German Academic Exchange Service (to D.V.D.); Intramural Research Program of the NLM at the National Institutes of Health (to M.Y.G.).

*Conflict of Interest:* none declared.

## REFERENCES

Altschul,S.F. et al. (1997) Gapped BLAST and PSI-BLAST—a new generation of protein database search programs. *Nucleic Acids Res.*, **25**, 3389–3402.  
 Becher,B. and Müller,V. (1994) ΔμNa<sup>+</sup> drives the synthesis of ATP via an ΔμNa<sup>+</sup>-translocating F<sub>1</sub>F<sub>o</sub>-ATP synthase in membrane vesicles of the archaeon *Methanosarcina mazei* Gö1. *J. Bacteriol.*, **176**, 2543–2550.

Crooks,G.E. et al. (2004) WebLogo: a sequence logo generator. *Genome Res.*, **14**, 1188–1190.  
 Davidsen,T. et al. (2010) The comprehensive microbial resource. *Nucleic Acids Res.*, **38**, D340–D345.  
 Davis,B.K. (2002) Molecular evolution before the origin of species. *Prog. Biophys. Mol. Biol.*, **79**, 77–133.  
 Finn,R.D. et al. (2010) The Pfam protein families database. *Nucleic Acids Res.*, **38**, D211–D222.  
 Forgac,M. (2007) Vacuolar ATPases: rotary proton pumps in physiology and pathophysiology. *Nat. Rev. Mol. Cell Biol.*, **8**, 917–929.  
 Glöckner,F.O. et al. (2003) Complete genome sequence of the marine planctomycete *Pirellula* sp. strain 1. *Proc. Natl Acad. Sci. USA*, **100**, 8298–8303.  
 Hilario,E. and Gogarten,J.P. (1998) The prokaryote-to-eukaryote transition reflected in the evolution of the V/F/A-ATPase catalytic and proteolipid subunits. *J. Mol. Evol.*, **46**, 703–715.  
 Hunter,S. et al. (2009) InterPro: the integrative protein signature database. *Nucleic Acids Res.*, **37**, D211–D215.  
 Krogh,A. et al. (2001) Predicting transmembrane protein topology with a hidden Markov model: application to complete genomes. *J. Mol. Biol.*, **305**, 567–580.  
 Kumar,S. et al. (2008) MEGA: a biologist-centric software for evolutionary analysis of DNA and protein sequences. *Brief. Bioinform.*, **9**, 299–306.  
 Marchler-Bauer,A. et al. (2009) CDD: specific functional annotation with the Conserved Domain Database. *Nucleic Acids Res.*, **37**, D205–D210.  
 McInerney,M.J. et al. (2007) The genome of *Syntrophus aciditrophicus*: life at the thermodynamic limit of microbial growth. *Proc. Natl Acad. Sci. USA*, **104**, 7600–7605.  
 Meier,T. et al. (2005) Structure of the rotor ring of F-type Na<sup>+</sup>-ATPase from *Ilyobacter tartaricus*. *Science*, **308**, 659–662.  
 Meier,T. et al. (2009) Complete ion-coordination structure in the rotor ring of Na<sup>+</sup>-dependent F-ATP synthases. *J. Mol. Biol.*, **391**, 498–507.  
 Mulkiđjanian,A.Y. et al. (2007) Inventing the dynamo machine: the evolution of the F-type and V-type ATPases. *Nat. Rev. Microbiol.*, **5**, 892–899.  
 Mulkiđjanian,A.Y. et al. (2008a) Evolutionary primacy of sodium bioenergetics. *Biol. Direct*, **3**, 13.  
 Mulkiđjanian,A.Y. et al. (2008b) The past and present of the sodium energetics: may the sodium-motive force be with you. *Biochim. Biophys. Acta*, **1777**, 985–992.  
 Mulkiđjanian,A.Y. et al. (2009) Co-evolution of primordial membranes and membrane proteins. *Trends Biochem. Sci.*, **34**, 206–215.  
 Murata,T. et al. (2005) Structure of the rotor of the V-type Na<sup>+</sup>-ATPase from *Enterococcus hirae*. *Science*, **308**, 654–659.  
 Onaca,C. et al. (2007) Degradation of alkyl methyl ketones by *Pseudomonas veronii* MEK700. *J. Bacteriol.*, **189**, 3759–3767.  
 Pallen,M.J. et al. (2006) Evolutionary links between FliH/YscL-like proteins from bacterial type III secretion systems and second-stalk components of the FoF<sub>1</sub> and vacuolar ATPases. *Protein Sci.*, **15**, 935–941.  
 Pisa,K.Y. et al. (2007) The coupling ion in the methanoarchaeal ATP synthases: H<sup>+</sup> vs. Na<sup>+</sup> in the A<sub>1</sub>A<sub>0</sub> ATP synthase from the archaeon *Methanosarcina mazei* Gö1. *FEMS Microbiol. Lett.*, **277**, 56–63.  
 Pogoryelov,D. et al. (2003) Sodium dependency of the photosynthetic electron transport in the alkaliphilic cyanobacterium *Arthrospira platensis*. *J. Bioenerg. Biomembr.*, **35**, 427–437.  
 Pruitt,K.D. et al. (2009) NCBI reference sequences: current status, policy and new initiatives. *Nucleic Acids Res.*, **37**, D32–D36.  
 Saum,R. et al. (2009) The F<sub>1</sub>F<sub>o</sub> ATP synthase genes in *Methanosarcina acetivorans* are dispensable for growth and ATP synthesis. *FEMS Microbiol. Lett.*, **300**, 230–236.  
 Skulachev,V.P. (1988) *Membrane Bioenergetics*. Springer, Berlin.  
 Sumi,M. et al. (1997) F<sub>o</sub>F<sub>1</sub>-ATPase genes from an archaeobacterium, *Methanosarcina barkeri*. *Biochem. Biophys. Res. Commun.*, **241**, 427–433.  
 Suzuki,T. et al. (2007) The product of *uncI* gene in F<sub>1</sub>F<sub>o</sub>-ATP synthase operon plays a chaperone-like role to assist c-ring assembly. *Proc. Natl Acad. Sci. USA*, **104**, 20776–20781.  
 Swingle,W.D. et al. (2008) Niche adaptation and genome expansion in the chlorophyll d-producing cyanobacterium *Acaryochloris marina*. *Proc. Natl Acad. Sci. USA*, **105**, 2005–2010.  
 von Ballmoos,C. et al. (2008) Unique rotary ATP synthase and its biological diversity. *Annu. Rev. Biophys.*, **37**, 43–64.  
 Willey,J.M. et al. (1987) Sodium-coupled motility in a swimming cyanobacterium. *J. Bacteriol.*, **169**, 3429–3434.