

Proximity to Goat Farms and *Coxiella burnetii* Seroprevalence among Pregnant Women

Wim van der Hoek, Jamie C.E. Meekelenkamp, Frederika Dijkstra, Daan W. Notermans, Ben Bom, Piet Vellema, Ariene Rietveld, Yvonne T.H.P. van Duynhoven and Alexander C.A.P. Leenders

During 2007–2009, we tested serum samples from 2,004 pregnant women living in an area of high Q fever incidence in the Netherlands. Results confirmed that presence of antibodies against *Coxiella burnetii* is related to proximity to infected dairy goat farms. Pregnant women and patients with certain cardiovascular conditions should avoid these farms.

Dairy goat farms were implicated in the large Q fever epidemic (>3,500 human cases) in the Netherlands during 2007–2009 (1,2). However, most human infections remain asymptomatic or appear as a self-limiting febrile illness and are therefore not reported. Seroprevalence studies are needed to discover the true infection pressure in the population. We aimed to establish whether the presence of antibodies to *Coxiella burnetii*, the etiologic agent of Q fever, is associated with physical proximity to infected small ruminant (dairy sheep and goat) farms.

The Study

Serum samples from pregnant women were obtained from laboratories located in the high-incidence Q fever area in the province of Noord-Brabant. The samples had been collected during June 20, 2007–May 26, 2009, during a screening program for syphilis, hepatitis B, and HIV infection, which was routinely offered to all pregnant

women. Serum samples were analyzed by using an immunofluorescence assay (Focus Diagnostics, Cypress, CA, USA) for detecting IgG and IgM against phases I and II of *C. burnetii* infection in a single dilution of 1:64. An IgG II titer ≥ 64 was considered indicative of past infection. Possible recent infection was defined as IgM II ≥ 64 combined with either an IgG II or IgM I titer ≥ 64 .

We included 10 adjacent municipalities (Figure 1) that had an incidence of Q fever notifications over the study period of 0.5–19.6 per 1,000 population and with clear seasonal peaks (Figure 2). Median age of the 2,004 women in the study was 30 years (interquartile range 27–33 years) with no significant differences between the municipalities. Seroprevalence for past infection was 9.0% (181/2,004), ranging from 0% to 21% between the 10 municipalities (Table 1). In 57 (31%) of 181 women, IgM II titer was ≥ 64 . Only 2 women had an IgM II titer ≥ 64 and IgM I titer ≥ 64 without an IgG II titer ≥ 64 . Seroprevalence for possible recent infection was therefore 2.9% (59/2,004), with a range of 0%–10% between the 10 municipalities.

For each pregnant woman, we calculated the distance from her home address to the closest farms in the following 3 categories: 1) dairy goat or dairy sheep farm

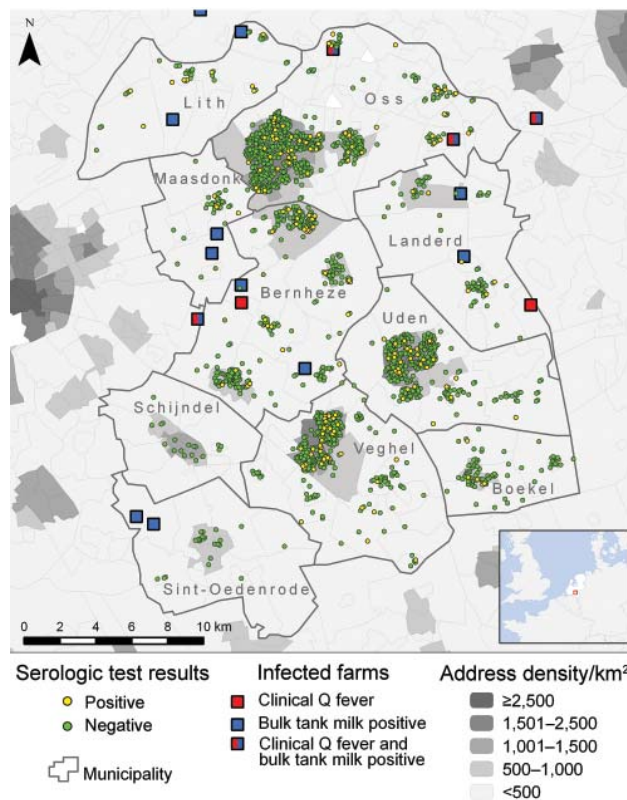


Figure 1. Location of the 10 municipalities studied in southern area of the Netherlands, 2007–2009, with residence and serologic results for 2,004 pregnant women, sites of small ruminant farms with infected animals, and address density. Three of the 20 farms included in the analysis are not visible.

Author affiliations: National Institute for Public Health and the Environment, Bilthoven, the Netherlands (W. van der Hoek, F. Dijkstra, D.W. Notermans, B. Bom, Y.T.H.P. van Duynhoven); Jeroen Bosch Hospital, 's-Hertogenbosch, the Netherlands (J.C.E. Meekelenkamp, A.C.A.P. Leenders); Animal Health Service, Deventer, the Netherlands (P. Vellema); and Municipal Health Service "Hart voor Brabant," 's-Hertogenbosch (A. Rietveld)

DOI: <http://dx.doi.org/10.3201/eid1712.110738>

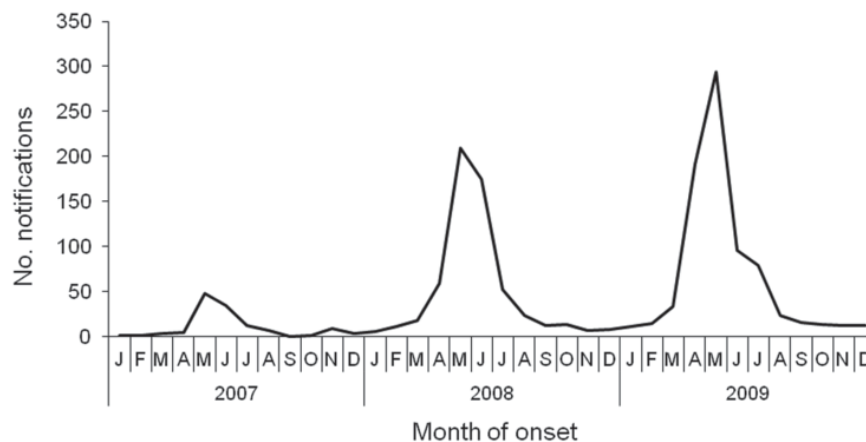


Figure 2. Q fever notifications by month of onset of illness in 10 municipalities in southern area of the Netherlands, 2007–2009.

where clinical Q fever (i.e., abortion waves) occurred during 2005–2009 (data from Animal Health Service) (8 farms [all goat farms] were identified in this way, of which 6 were located within or just outside of the study area) (Figure 1); 2) dairy goat or dairy sheep farms at which bulk tank milk tested positive for *C. burnetii* antibodies in the mandatory bulk tank milk monitoring program in 2009 (data from Food and Consumer Product Safety Authority; 12 goat farms were identified); and 3) a farm with >100 goats or sheep, irrespective of the infection status and production type (milk or meat) of the farm (data from the Ministry of Agriculture, Nature and Food Quality). Details of category 1 and category 2 farms are provided in the online Appendix Table (wwwnc.cdc.gov/EID/article/17/12/11-0738-TA1.htm).

Univariate regression analysis showed that pregnant women living <2 km from a farm that had experienced clinical Q fever had a higher risk of testing positive for antibodies to *C. burnetii* than those living ≥ 5 km away (odds ratio 2.63, 95% confidence interval 1.33–5.20 for IgG II titer ≥ 64 and odds ratio 6.58, 95% confidence interval 2.78–15.55 for possible recent infection). The increased risk for farms that had positive test results during monitoring of

bulk tank milk was not significant. No increased risk was found for women who lived close to any farm with >100 animals. However, 98% of the population in the study area live within 5 km of such farms. In multivariate logistic regression analyses, taking into account address density of the neighborhood and other relevant variables, living <2 km from a farm with clinical Q fever remained a strong risk factor (Table 2).

Conclusions

The presence of antibodies against *C. burnetii*, especially levels suggesting recent infection, is associated with living near a farm with infected dairy goats. This finding applied only to farms where animals had clinical Q fever and not for farms where tests of bulk tank milk were positive. A study in 2008 showed that persons who lived near (<2 km) an infected dairy goat farm had a much higher risk for Q fever than did persons who lived further away (>5 km) (3). However, these results were based on notified cases, i.e., patients with clinical signs. Because the link to goat farming has received substantial attention in the public media, persons living close to goat farms may have sought medical care for suspected Q fever more rapidly than those

Table 1. Antibodies to *Coxiella burnetii* in pregnant women in 10 municipalities in Noord-Brabant Province, the Netherlands, June 2007–May 2009

Municipality	Total population	No. pregnant women tested	Serologic profile, no. (%) women	
			IgG II titer ≥ 64	Possible recent infection*
Lith	6,667	42	9 (21.4)	4 (9.5)
Oss	77,097	702	57 (8.1)	22 (3.1)
Maasdonk	11,260	38	5 (13.2)	0
Bernheze	29,615	291	30 (10.3)	15 (5.2)
Landerd	14,805	72	6 (8.3)	4 (5.6)
Uden	40,360	380	32 (8.4)	8 (2.1)
Veghel	37,125	355	37 (10.4)	6 (1.7)
Boekel	9,692	84	5 (6.0)	0
Schijndel	22,889	18	0	0
Sint-Oedenrode	17,427	22	0	0
Total	266,937	2,004	181 (9.0)	59 (2.9)

*IgM titer to phase II antigen ≥ 64 combined with either an IgG II or IgM I titer ≥ 64 .

Table 2. Multivariate logistic regression models for *Coxiella burnetii* IgG II seropositivity and serologic indication for possible recent infection based on house location of 2,004 pregnant women, the Netherlands, 2007–2009*

Variable	OR (95% CI)	
	IgG II titer ≥ 64	Possible recent infection†
Distance to nearest farm with clinical Q fever, km		
<2.0	2.38 (1.19–4.73)	6.68 (2.53–17.64)
2.0–4.9	1.12 (0.74–1.71)	2.82 (1.34–5.92)
≥ 5	Reference	Reference
No. infected farms within 5 km		
≥ 1		0.92 (0.46–1.85)
0		Reference
Total no. locations with sheep or goats within 5 km		
≥ 140	1.29 (0.95–1.76)	
<140	Reference	
Address density of neighborhood, addresses/km ² ‡		
<500	1.85 (1.23–2.78)	1.32 (0.65–2.70)
≥ 500	Reference	Reference

*OR, odds ratio; CI, confidence interval. Blank cells indicate variable not included.

†IgM antibody titer to phase II antigen ≥ 64 combined with either an IgG II or IgM I titer ≥ 64 .

‡Neighborhoods were categorized as not urban if the address density was <500 addresses/km² and urban if ≥ 500 /km².

who lived distantly from goat farms. Our population-based serologic study had a control group of seronegative women and identified asymptomatic infections. Combined, both studies provide evidence that living near dairy goat farms that experience abortion waves increases the risk in humans for symptomatic and asymptomatic *C. burnetii* infection.

A limitation of this study is that the exact infectious periods for each of the 20 farms in the study are unknown. Mandatory systematic monitoring of bulk tank milk only started in October 2009. However, for 17 of the 20 farms identified in the distance calculations in the present study, bulk tank milk testing results from 2008 were available from the records of the Animal Health Service. When an ELISA was performed, animals at 13 of the 17 farms tested positive for *C. burnetii* antibodies (online Appendix Table). Furthermore, for 15 of the 17 farms, bulk tank milk tested positive by PCR in 2008. The assumption that persons became infected where they lived, although infection might have occurred elsewhere, might have weakened the association between house location and infected farms because of nondifferential misclassification. We did not account for circumstances that may play a role in transmission from farm to humans, such as wind, vegetation patterns, and soil conditions around infected farms (4). We assume that the effect of the voluntary vaccination program of small ruminants in 2008 had only limited effects on the study. Culling of pregnant animals on infected farms did not affect the results of the study because that began in December 2009.

We found an overall prevalence of IgG II antibodies of 9.0%. In comparison, during 2006–2007, a seroprevalence

of 2.4% was found in a nationwide seroprevalence survey in the Netherlands, just before the first major outbreak (5). The present Q fever epidemic peaked right after the last data were collected for the present study. In the second half of 2009, seroprevalence for blood donors in the high-incidence area was estimated at 12.2% (6). The findings of the different seroprevalence studies are consistent with the view that Q fever newly emerged in the Netherlands, peaking in 2009, and that a high infection pressure has resulted in increased seroprevalence in the general population, including in pregnant women.

Whether infection during pregnancy is associated with adverse pregnancy outcomes remains uncertain. The international literature suggests this conclusion, but an analysis based on 1,174 of the 2,004 women included in the present study showed no evidence of adverse pregnancy outcome among women with antibodies to *C. burnetii* (7–9). Despite uncertainties surrounding the clinical significance of asymptomatic seropositivity, this study supports the recommendation that pregnant women and persons at risk for chronic Q fever, such as patients with certain cardiovascular conditions, should avoid visiting infected farms.

Acknowledgments

We thank Marianne van der Sande and Roel Coutinho for their comments on the manuscript.

This study was funded from a budget made available by the Ministry of Health, Welfare and Sport to the Center for Infectious Disease Control (project nos. V/210402 and S/210206).

Dr van der Hoek is a medical doctor and epidemiologist working at the Center for Infectious Disease Control of the Netherlands. His main research interest is in environmental determinants of respiratory, gastrointestinal, and zoonotic infectious diseases.

References

1. Roest HIJ, Tilburg JJHC, van der Hoek W, Vellema P, van Zijderveld FG, Klaassen CHW, et al. The Q fever epidemic in the Netherlands: history, onset, response and reflection. *Epidemiol Infect.* 2011;139:1–12. doi:10.1017/S0950268810002268
2. van der Hoek W, Dijkstra F, Schimmer B, Schneeberger PM, Vellema P, Wijkmans C, et al. Q fever in the Netherlands: an update on the epidemiology and control measures. *Euro Surveill.* 2010;15:pii:19520.
3. Schimmer B, ter Schegget R, Wegdam M, Züchner L, de Bruin A, Schneeberger PM, et al. The use of a geographic information system to identify a dairy goat farm as the most likely source of an urban Q-fever outbreak. *BMC Infect Dis.* 2010;10:69. doi:10.1186/1471-2334-10-69
4. van der Hoek W, Hunink J, Vellema P, Droogers P. Q fever in the Netherlands: the role of local environmental conditions. *Int J Environ Health Res.* 2011;11:1–11. doi:10.1080/09603123.2011.574270

5. Schimmer B, Notermans DW, Harms MG, Reimerink JHJ, Bakker J, Schneeberger P, et al. Low seroprevalence of Q fever in the Netherlands prior to a series of large outbreaks. *Epidemiol Infect.* 2011;Feb 16:1–11. Epub ahead of print. doi: 10.1017/S0950268811000136
6. Hogema BM, Slot E, Molier M, Schneeberger PM, Hermans MH, van Hannen EJ, et al. *Coxiella burnetii* infection among blood donors during the 2009 Q-fever outbreak in the Netherlands. *Transfusion.* 2011;Jul 14. Epub ahead of print. doi:10.1111/j.1537-2995.2011.03250.x
7. Langley JM, Marrie TJ, LeBlanc JC, Almudevar A, Resch L, Raoult D. *Coxiella burnetii* seropositivity in parturient women is associated with adverse pregnancy outcomes. *Am J Obstet Gynecol.* 2003;189:228–32. doi:10.1067/mob.2003.448
8. Carcopino X, Raoult D, Bretelle F, Boubli L, Stein A. Managing Q fever during pregnancy: the benefits of long-term cotrimoxazole therapy. *Clin Infect Dis.* 2007;45:548–55. doi:10.1086/520661
9. van der Hoek W, Meekelenkamp JCE, Leenders ACAP, Wijers N, Notermans DW, Hukkelhoven CWPM. Antibodies against *Coxiella burnetii* and pregnancy outcome during the 2007–2008 Q fever outbreaks in the Netherlands. *BMC Infect Dis.* 2011;11:44. doi:10.1186/1471-2334-11-44

Address for correspondence: Wim van der Hoek, Center for Infectious Disease Control, National Institute for Public Health and the Environment, PO Box 1, 3720 BA Bilthoven, the Netherlands; email: wim.van.der.hoek@rivm.nl



SAVE the DATE: MARCH 11–14, 2012

The International Conference on Emerging Infectious Diseases was first convened in 1998; ICEID 2012 marks its eighth occurrence. The conference brings together public health professionals to encourage the exchange of scientific and public health information on global emerging infectious disease issues. The program will include plenary and panel sessions with invited speakers as well as oral and poster presentations on emerging infections. Major topics to be included are current work on surveillance, epidemiology, research, communication and training, bioterrorism, and prevention and control of emerging infectious diseases, both in the United States and abroad.

Which infectious diseases are emerging?

Whom are they affecting?

Why are they emerging now?

What can we do to prevent and control them?

Hyatt Regency Atlanta
265 Peachtree Street NE
Atlanta, Georgia, USA 30303