

IgM has a better relative distribution in inflammation sites and tumor tissues than IgG

Abdulaziz M. Aldayel^{1,2,5*}, Mohammad Bosaeed^{3,4,5}, Sarah Almansour⁴, Naif Alharbi^{3,5}, Mohammed Alenazi³, Haya A. Aljami³, Omar Aldibasi^{5,6}, Abdulrhman Aljouie^{5,6}, Haiyue Xu¹ and Zhengrong Cui^{1*}

¹ The University of Texas at Austin, College of Pharmacy, Division of Molecular Pharmaceutics and Drug Delivery, Austin, TX 78712, United States.

² Nanomedicine Department, King Abdullah International Medical Research Center (KAIMRC). King Abdulaziz Medical City (KAMC), Riyadh, 11426, Saudi Arabia.

³ Infectious Diseases Research Department, King Abdullah International Medical Research Center. King Abdulaziz Medical City (KAMC), Riyadh, 11426, Saudi Arabia.

⁴ Infectious Diseases Department, King Fahad Hospital (KFH), King Abdulaziz Medical City (KAMC), Riyadh, 11426, Saudi Arabia.

⁵ Department of Biostatistics and Bioinformatics, King Abdullah International Medical Research Center, King Saud bin Abdulaziz University for Health Sciences, Riyadh, Saudi Arabia

⁶ King Saud bin Abdulaziz University for Health Sciences (KSAU-HS), King Abdulaziz Medical City (KAMC), Riyadh, 11426, Saudi Arabia.

***Correspondence to:**

Abdulaziz Aldayel, Ph.D.

Email: abdulazizaldayel777@gmail.com

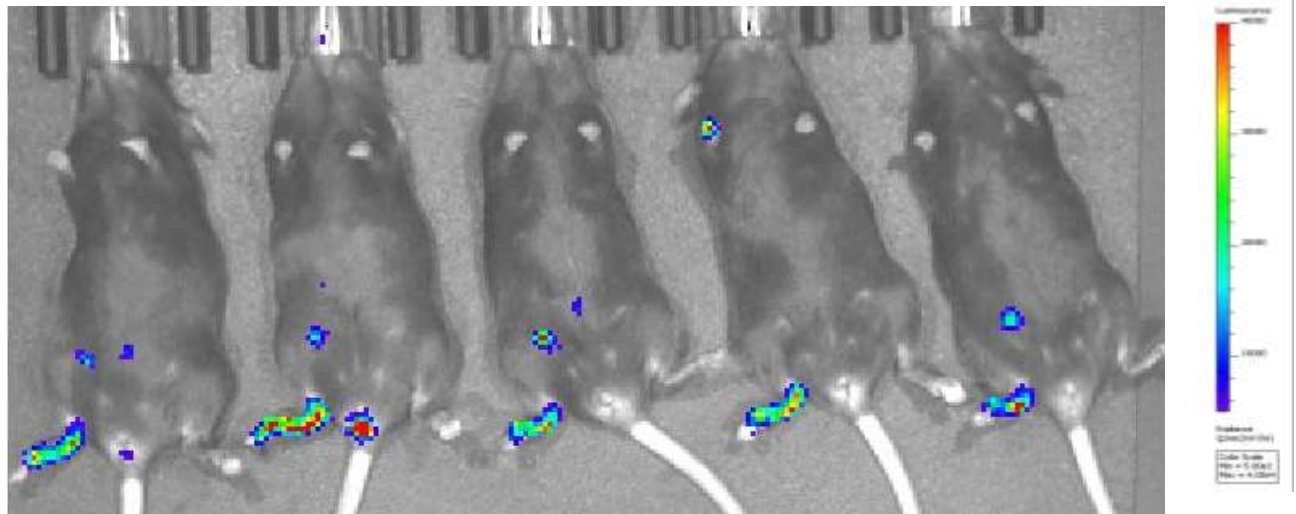
Zhengrong Cui, Ph.D.

Tel: (512) 495-4758

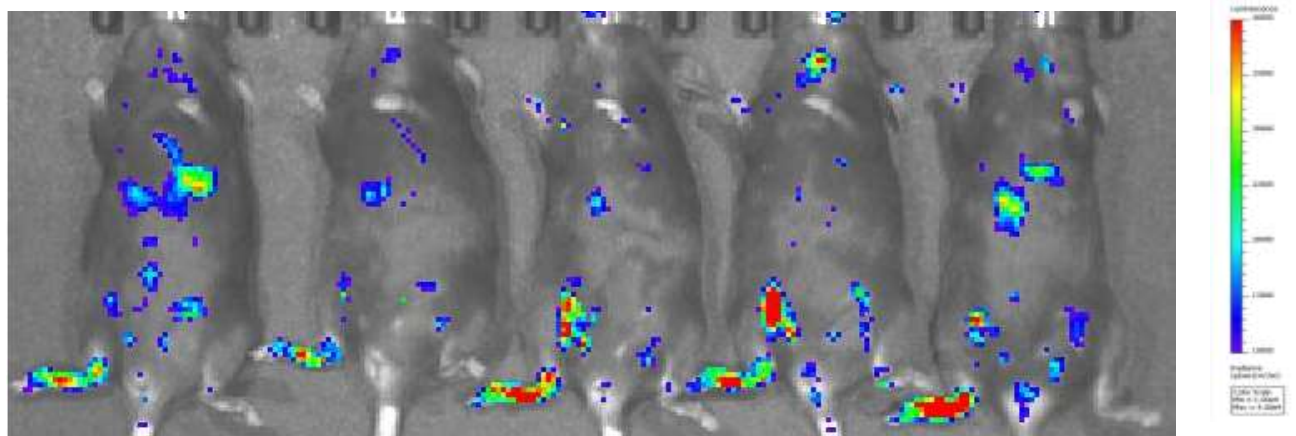
Email: Zhengrong.cui@austin.utexas.edu

Supp. Figure. S1

A



B



Supp. Figure. S1. *In vivo* longitudinal bioluminescence imaging of acute and chronic inflammation in the right rear foot pad, but not the left rear foot pad, of mice. We induced local tissue inflammation by s.c. injection of 50 μ g LPS. (A) Mice were given an i.p. injection of luminol (100 mg/kg) and imaged on day 3. (B) Mice were given an i.p. injection of lucigenin (25 mg/kg) and imaged on day 8.

Supp. Table. S1. Selected statistical parameters of IgG and IgM in mice with acute and chronic inflammation. Tukey-Kramer adjustment was used to calculate the significant distribution of IgG and IgM in inflamed vs. control feet over time. (A) IgG and (B) IgM distribution to mice feet within acute inflammation. (C) IgG and (D) IgM distribution to mice feet within chronic inflammation. (n=5-6)

A

| Type 3 tests of fixed effects IgG acute inflammation | | | | |
|--|--------|--------|---------|--------|
| Effect | Num DF | Den DF | F Value | Pr > F |
| Time | 3 | 12 | 5.86 | 0.0106 |
| Tissue | 1 | 4 | 0.05 | 0.8263 |
| Time*Tissue | 3 | 12 | 0.12 | 0.9467 |
| Inflamed vs. Control, Tukey-Kramer , adjusted P ≤ 0.8263 | | | | |

B

| Type 3 tests of fixed effects IgM acute inflammation | | | | |
|--|--------|--------|---------|--------|
| Effect | Num DF | Den DF | F Value | Pr > F |
| Time | 3 | 15 | 18.46 | <.0001 |
| Tissue | 1 | 5 | 13.03 | 0.0154 |
| Time*Tissue | 3 | 15 | 1.79 | 0.1931 |
| Inflamed vs. Control, Tukey-Kramer , adjusted P ≤ 0.0154 | | | | |

C

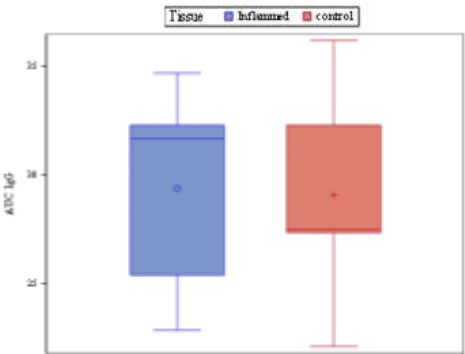
| Type 3 tests of fixed effects IgG chronic inflammation | | | | |
|--|--------|--------|---------|--------|
| Effect | Num DF | Den DF | F Value | Pr > F |
| Time | 3 | 30 | 8.34 | 0.0003 |
| Tissue | 1 | 10 | 0.08 | 0.7857 |
| Time*Tissue | 3 | 30 | 0.26 | 0.8522 |
| Inflamed vs. Control, Tukey-Kramer , adjusted P ≤ 0.7857 | | | | |

D

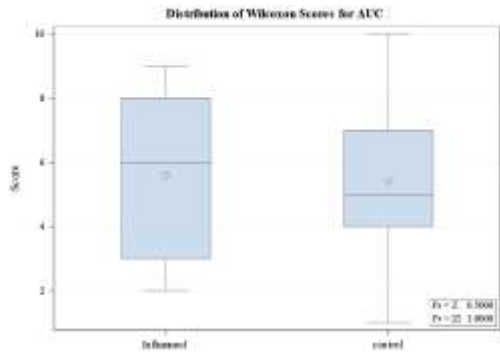
| Type 3 tests of fixed effects IgM chronic inflammation | | | | |
|--|--------|--------|---------|--------|
| Effect | Num DF | Den DF | F Value | Pr > F |
| Time | 3 | 30 | 14.44 | <.0001 |
| Tissue | 1 | 10 | 18.82 | 0.0015 |
| Time*Tissue | 3 | 30 | 0.33 | 0.8049 |
| Inflamed vs. Control, Tukey-Kramer , adjusted P ≤ 0.0015 | | | | |

Supp. Figure. S2

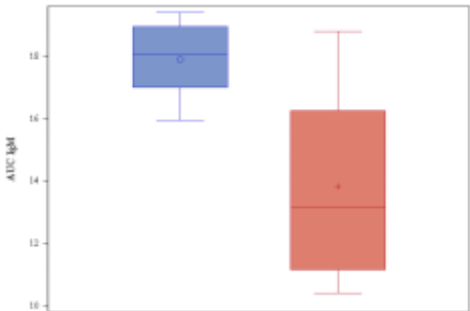
A



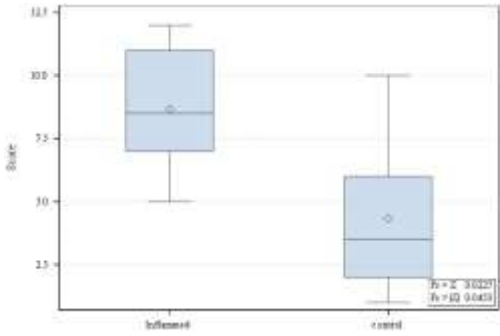
B



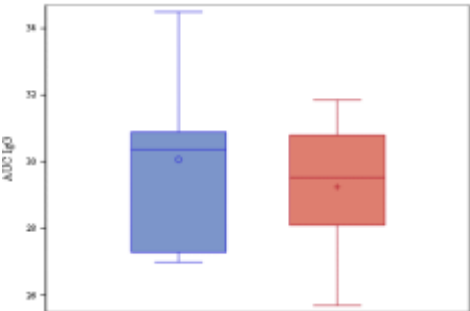
C



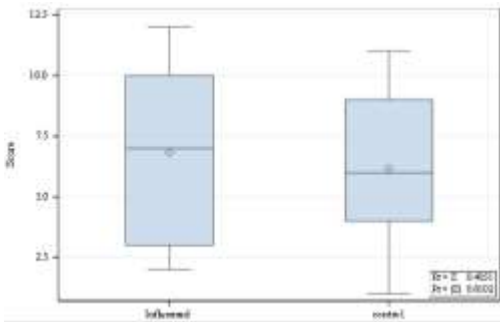
D



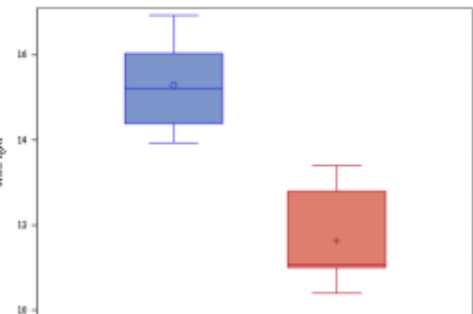
E



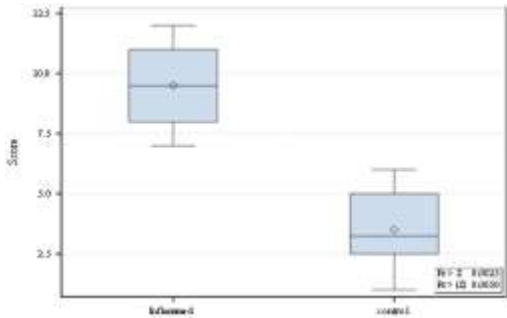
F



G



H



Supp. Figure. S2. Area under the curve (AUC) values and Wilcoxon Scores of IgG and IgM Classified by inflamed vs. control foot in mice with acute and chronic inflammation. (A) AUC and (B) Wilcoxon Scores IgG distribution to mice feet within acute inflammation, (C) AUC and (D) Wilcoxon Scores IgM distribution to mice feet within acute inflammation. (E) AUC and (F) Wilcoxon Scores IgG distribution to mice feet within chronic inflammation, (g) AUC and (h) Wilcoxon Scores IgM distribution to mice feet within chronic inflammation. Data are mean \pm S.E.M. (n=5-6).