

Research article

Open Access

## Induction of temperate cyanophage AS-I by heavy metal – copper

Lee H Lee\*<sup>1</sup>, Doris Lui<sup>1</sup>, Patricia J Platner<sup>1</sup>, Shi-Fang Hsu<sup>1</sup>, Tin-Chun Chu<sup>1,2</sup>, John J Gaynor<sup>1</sup>, Quinn C Vega<sup>1</sup> and Bonnie K Lustigman<sup>1</sup>

Address: <sup>1</sup>Department of Biology & Molecular Biology, Montclair State University, Montclair, NJ 07043, USA and <sup>2</sup>Department of Health Informatics, University of Medicine and Dentistry of New Jersey, Newark, NJ 07107, USA

Email: Lee H Lee\* - leel@mail.montclair.edu; Doris Lui - luid1@mail.montclair.edu; Patricia J Platner - platnerp@mail.montclair.edu; Shi-Fang Hsu - hsus1@mail.montclair.edu; Tin-Chun Chu - chuti@umdnj.edu; John J Gaynor - gaynorj@mail.montclair.edu; Quinn C Vega - vegaq@mail.montclair.edu; Bonnie K Lustigman - lustigmanb@mail.montclair.edu

\* Corresponding author

Published: 24 February 2006

Received: 18 August 2005

BMC Microbiology 2006, 6:17 doi:10.1186/1471-2180-6-17

Accepted: 24 February 2006

This article is available from: <http://www.biomedcentral.com/1471-2180/6/17>

© 2006 Lee et al; licensee BioMed Central Ltd.

This is an Open Access article distributed under the terms of the Creative Commons Attribution License (<http://creativecommons.org/licenses/by/2.0>), which permits unrestricted use, distribution, and reproduction in any medium, provided the original work is properly cited.

### Abstract

**Background:** It has been reported that some marine cyanophage are temperate and can be induced from a lysogenic phase to a lytic phase by different agents such as heavy metals. However, to date no significant reports have focused on the temperate nature of freshwater cyanophage/cyanobacteria. Previous experiments with cyanophage AS-I and cyanobacteria *Anacystis nidulans* have provided some evidence that AS-I may have a lysogenic life cycle in addition to the characterized lytic cycle.

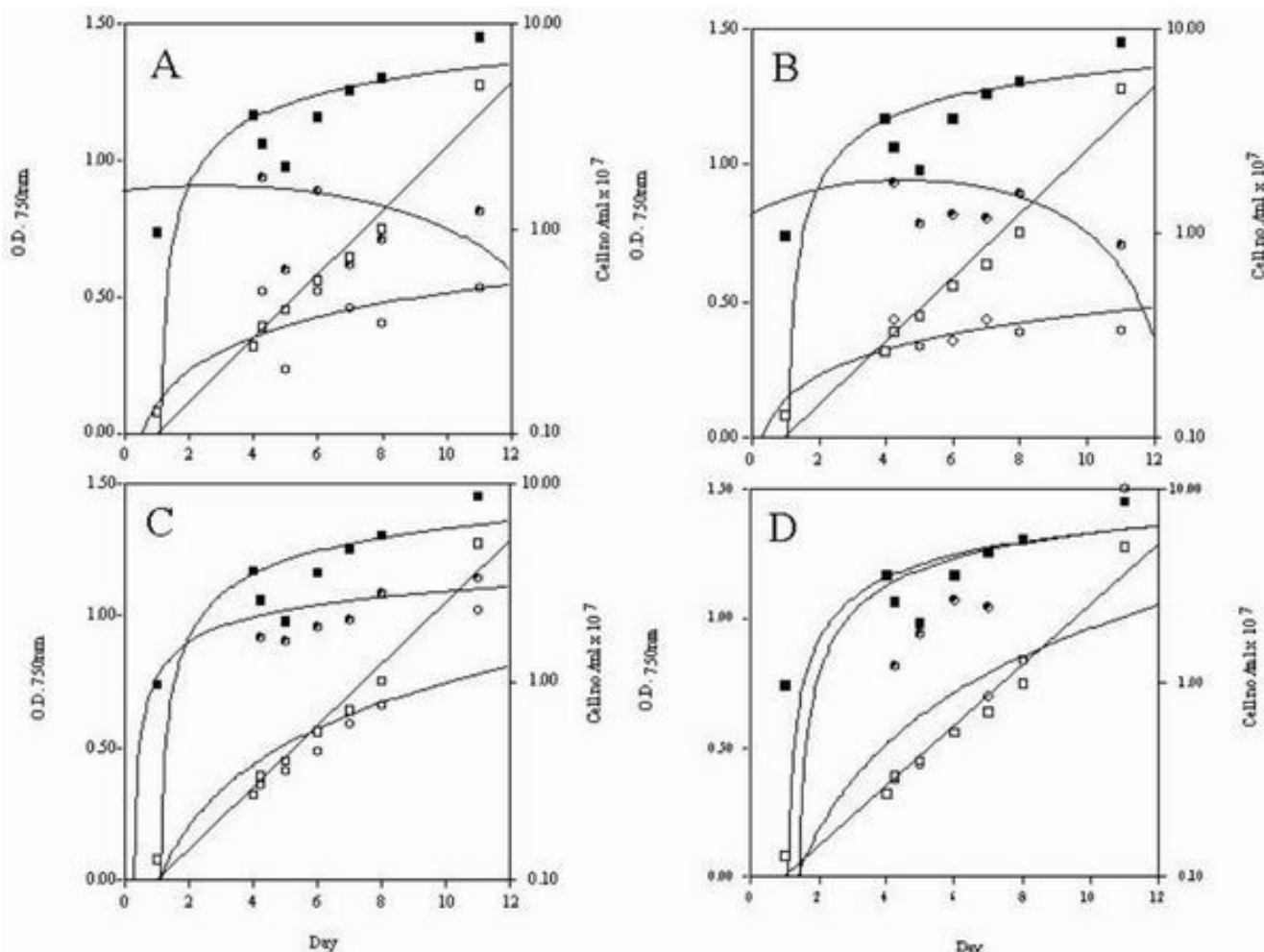
**Results:** In this study, the possible temperate *A. nidulans* was treated with different concentrations of heavy metal-copper. CuSO<sub>4</sub> with concentrations of 3.1 × 10<sup>-3</sup> M, 3.1 × 10<sup>-4</sup> M, 3.1 × 10<sup>-5</sup> M and 3.1 × 10<sup>-6</sup> M were used to detect the induction of AS-I from *A. nidulans*. The population of the host, unicellular cyanobacteria *Anacystis nidulans*, was monitored by direct count and turbidity while the amount of virus produced was derived from plaque forming units (PFU) by a direct plating method. The ratio of AS-I release from *A. nidulans* was also determined. From these results it appears that AS-I lysogenic phage can be induced by copper at concentrations from 3.1 × 10<sup>-6</sup> M to 3.1 × 10<sup>-4</sup> M. Maximal phage induction occurred at 6 hours after addition of copper, with an optimal concentration of 3.1 × 10<sup>-6</sup> M.

**Conclusion:** Cu<sup>2+</sup> is a significant inducer for lysogenic cyanobacterial cells and consequently would be a potential control agent in the cyanobacteria population in fresh water ecosystems.

### Background

*Anacystis nidulans* is a rod-shaped, unicellular prokaryotic cyanobacterium and plays an important role in aquatic ecosystems as a primary producer. It is often used as an indicator for studying the toxic metabolic levels of heavy metals. Many heavy metal studies have been done using *A. nidulans* as the model system for the reaction of organisms to heavy metal stresses [1-10]. In freshwater environ-

ments, dense algal blooms of cyanobacteria are usually caused by nutrient enrichment (*i.e.*, nitrogen and phosphorus) from sewage, agricultural fertilizers and industrial run-off into waterways [11]. Algal blooms are considered threat to the water system [11,12]. Cyanophage are viruses that infect cyanobacteria and are ubiquitous in both freshwater and marine environments. These phages play important roles in modulating cyanobacterial

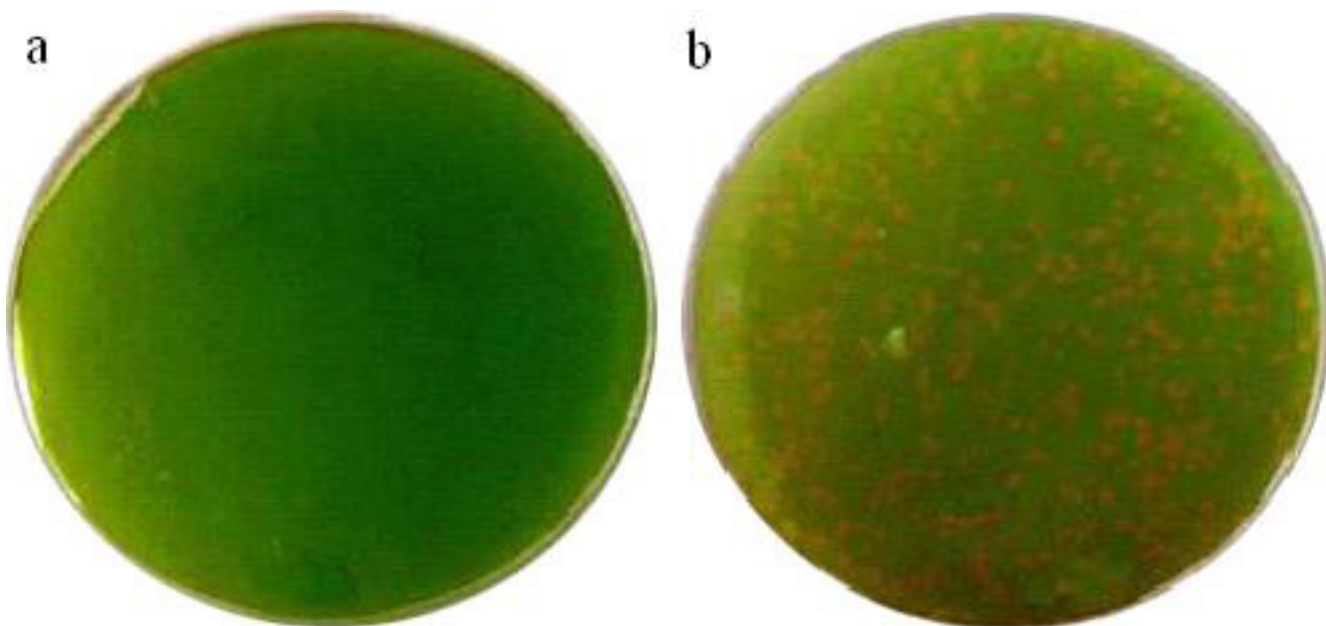


**Figure 1**  
**The growth curve of AN-T and CuSO<sub>4</sub> treated AN-T.** The AN-T growth curves with addition of different concentrations of CuSO<sub>4</sub> at day 4, and no CuSO<sub>4</sub> added as the control. A. Control and CuSO<sub>4</sub> 3.1 × 10<sup>-3</sup> M; B. Control and 3.1 × 10<sup>-4</sup> M; C. Control and 3.1 × 10<sup>-5</sup> M; D. Control and 3.1 × 10<sup>-6</sup> M. □ O.D. (Control); ■ Cell no./ml × 10<sup>7</sup> (Control); ○ O.D. (Treated); ● Cell no./ml × 10<sup>7</sup> (Treated).

populations, affecting primary productivity, increasing water quality and may have a profound influence on global biogeochemical cycles [13,14]. Although the interaction between a cyanophage and its host organism is important in maintaining water quality in freshwater systems, little is known about how viruses regulate microbial mortality in natural waters. Recently, it was found that lysogenic infection was common in marine *Synechococcus* sp. [15]. Cyanophage infecting a single strain of marine *Synechococcus* sp. can reach 10<sup>3</sup> to 10<sup>5</sup> per ml in seawater [14,16-18]. Suttle and Chan [17] have estimated that between 5–15 % of marine *Synechococcus* cells were lysed by cyanophage daily. The discovery of a high abundance of viral particles (*ca.* 10<sup>7</sup> per ml) in natural waters [19,20] initiated the research on the ecological impact of the viral infection and lysis of marine microbes. They also pro-

vided evidence that viruses can affect microbial populations by either going through a lytic cycle, causing destruction of the host cell, or maintaining a lysogenic stage, in which the viral genome is inserted and maintained as the prophage in its host cell [18]. There was also evidence to suggest that seasonal changes can cause the prophage to enter a lytic cycle thus leading to the disappearance of algae blooms [21-23]. Lysogeny can also be induced to a lytic cycle by pollutants [24].

Although extensive research has been done on the interaction between cyanophage and cyanobacteria in marine systems, there are no significant reports that have focused on freshwater cyanophage/cyanobacteria interactions. The possibility of temperate AS-1 and lysogenic *A. nidulans* was suggested by Bisen *et al* [25], but there was no direct



**Figure 2**  
**PFU from CuSO<sub>4</sub> induction.** Plaque Forming Unit (PFU) from AN-T after the CuSO<sub>4</sub> induction; a) no plaques, b) proper numbers of PFUs for counting.

evidence provided. It has been reported that UV, mitomycin C and heavy metals such as copper, cadmium can induce the release of cyanophage in marine water [22,26]. In this study, different concentrations of copper sulfate were used to study a possible AS-1 lysogenic life cycle in addition to the previously characterized lytic cycle. Addition of copper sulfate led to a significant increase in phage production, a characteristic of an organism with a lysogenic life cycle. The study of lytic induction from temperate *A. nidulans* can provide a good model for studying the interaction between cyanophage and cyanobacteria in freshwater ecosystems.

### Results and discussion

In order to determine if heavy metals could cause induction of AS-1 from temperate *A. nidulans* (AN-T), CuSO<sub>4</sub> was added at concentrations of  $3.1 \times 10^{-3}$  M,  $3.1 \times 10^{-4}$  M,  $3.1 \times 10^{-5}$  M and  $3.1 \times 10^{-6}$  M at day 4 post inoculation, the exponential growth stage of the culture. Growth of AN-T was severely inhibited at concentrations of  $3.1 \times 10^{-3}$  M and  $3.1 \times 10^{-4}$  M. Growth was affected to a certain extent in  $3.1 \times 10^{-5}$  M of CuSO<sub>4</sub>; growth rate in  $3.1 \times 10^{-6}$  M CuSO<sub>4</sub> was very similar to the control (Figure 1).

As results seen in marine cyanobacteria, there is consistent release of virus through out the lysogenic cycle in the normal AS-1/*A. nidulans* infective system. The viral release was monitored by plaque forming units (PFUs). The rep-

resentative pictures of the plaque forming units (PFU) after CuSO<sub>4</sub> induction were obtained from different treated conditions and illustrated as no plaques and the proper number of plaques as showed in Figure 2. The results of AS-1 PFU study, showed that 6 hours after copper induction,  $353.00 \pm 32.57$  PFUs were observed from the control,  $483.00 \pm 18.39$  PFUs were observed from  $3.1 \times 10^{-4}$  M of CuSO<sub>4</sub>;  $416.00 \pm 8.49$  PFUs were formed from  $3.1 \times 10^{-5}$  M of CuSO<sub>4</sub>,  $480.00 \pm 25.46$  PFUs were formed from  $3.1 \times 10^{-6}$  M of CuSO<sub>4</sub>. 24 hours after induction,  $372.00 \pm 16.97$ ,  $160.00 \pm 11.31$ ,  $345.00 \pm 18.39$  and  $526.00 \pm 19.80$  PFUs were formed compared to the control,  $3.1 \times 10^{-4}$  M,  $3.1 \times 10^{-5}$  M and  $3.1 \times 10^{-6}$  M of CuSO<sub>4</sub> respectively. 48 hours after induction,  $479.00 \pm 36.77$ ,  $57.00 \pm 9.90$ ,  $483.00 \pm 9.90$  and  $614.00 \pm 5.66$  PFUs were formed for the control,  $3.1 \times 10^{-4}$  M,  $3.1 \times 10^{-5}$  M and  $3.1 \times 10^{-6}$  M of CuSO<sub>4</sub> induction respectively.

PFUs per  $10^6$  *A. nidulans* was also calculated, 6 hours after induction, they were  $13.57 \pm 0.23$ ,  $27.44 \pm 1.16$ ,  $24.83 \pm 1.58$ , and  $39.18 \pm 0.41$  respectively for the control,  $3.1 \times 10^{-4}$  M,  $3.1 \times 10^{-5}$  M and  $3.1 \times 10^{-6}$  M of CuSO<sub>4</sub>. 24 hours after induction, they were  $18.37 \pm 2.47$ ,  $14.29 \pm 0.44$ ,  $21.30 \pm 1.24$  and  $29.06 \pm 0.50$  respectively for the control,  $3.1 \times 10^{-4}$  M,  $3.1 \times 10^{-5}$  M and  $3.1 \times 10^{-6}$  M of CuSO<sub>4</sub>. 48 hours after induction, they were  $13.42 \pm 0.65$ ,  $4.67 \pm 0.70$ ,  $25.76 \pm 0.93$  and  $24.14 \pm 0.21$  respectively for the control,  $3.1 \times 10^{-4}$  M,  $3.1 \times 10^{-5}$  M and  $3.1 \times 10^{-6}$  M of CuSO<sub>4</sub>.

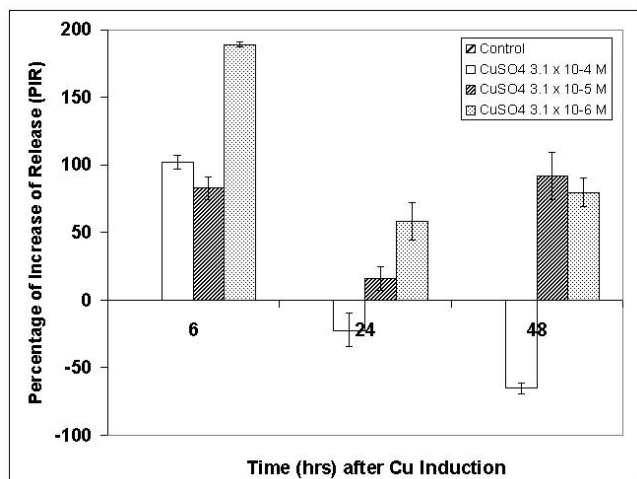
**Table 1: Summary of heavy metal CuSO<sub>4</sub> induction. Heavy metal CuSO<sub>4</sub> induction: Summary of the growth of AN-T; PFU; PFU per 10<sup>6</sup> A. nidulans; PFUs change rate for treated/control; PFU per 10<sup>6</sup> A. nidulans treated/control and PIR with different concentrations of CuSO<sub>4</sub> at 6 hours, 24 hours, and 48 hours after addition of different concentrations of CuSO<sub>4</sub> at day 4 and non-CuSO<sub>4</sub> added as a control.**

CuSO <sub>4</sub>	Control (No CuSO <sub>4</sub> added)			
Time after induction (hrs)	0	6	24	48
OD <sub>750 nm</sub>	0.32 ± 0.03	0.39 ± 0.06	0.45 ± 0.03	0.56 ± 0.08
Cell numbers (10 <sup>7</sup> )	3.60 ± 0.28	2.60 ± 0.27	2.06 ± 0.36	3.57 ± 0.10
Plaque Forming Unit (PFU)	ND	353.00 ± 32.57	372.00 ± 16.97	479.00 ± 36.77
PFU per 10 <sup>6</sup> A. nidulans	ND	13.57 ± 0.23	18.37 ± 2.47	13.42 ± 0.65
CuSO <sub>4</sub>	3.1 × 10 <sup>-4</sup> M CuSO <sub>4</sub>			
Time after induction (hrs)	0	6	24	48
OD <sub>750 nm</sub>	0.32 ± 0.03	0.44 ± 0.05	0.34 ± 0.01	0.36 ± 0.03
Cell numbers (10 <sup>7</sup> )	3.60 ± 0.29	1.76 ± 0.14	1.12 ± 0.11	1.22 ± 0.03
Plaque Forming Unit (PFU)	ND	483.00 ± 18.39	160.00 ± 11.31	57.00 ± 9.90
PFU per 10 <sup>6</sup> A. nidulans	ND	27.44 ± 1.16	14.29 ± 0.44	4.67 ± 0.70
PFUs change rate for treatment/control	ND	1.37 ± 0.08	0.43 ± 0.01	0.12 ± 0.01
PFU per 10 <sup>6</sup> A. nidulans treated/control	ND	2.00	0.78	0.35
PIR (%)	ND	102.20 ± 5.19	-22.20 ± 12.60	-65.20 ± 3.65
CuSO <sub>4</sub>	3.1 × 10 <sup>-5</sup> M CuSO <sub>4</sub>			
Time after induction (hrs)	0	6	24	48
OD <sub>750 nm</sub>	0.32 ± 0.03	0.36 ± 0.03	0.41 ± 0.04	0.49 ± 0.01
Cell numbers (10 <sup>7</sup> )	3.60 ± 0.28	1.68 ± 0.14	1.62 ± 0.01	1.875 ± 0.11
Plaque Forming Unit (PFU)	ND	416.00 ± 8.49	345.00 ± 18.39	483.00 ± 9.90
PFU per 10 <sup>6</sup> A. nidulans	ND	24.83 ± 1.58	21.30 ± 1.24	25.76 ± 0.93
PFUs change rate for treatment/control	ND	1.18 ± 0.09	0.93 ± 0.01	1.01 ± 0.06
PFU per 10 <sup>6</sup> A. nidulans treated/control	ND	1.80	1.20	2.00
PIR (%)	ND	82.98 ± 8.61	15.95 ± 8.79	91.95 ± 17.32
CuSO <sub>4</sub>	3.1 × 10 <sup>-6</sup> M CuSO <sub>4</sub>			
Time after induction (hrs)	0	6	24	48
OD <sub>750 nm</sub>	0.32 ± 0.03	0.38 ± 0.09	0.44 ± 0.04	0.56 ± 0.01
Cell numbers (10 <sup>7</sup> )	3.60 ± 0.28	1.23 ± 0.08	1.81 ± 0.10	2.66 ± 0.13
Plaque Forming Unit (PFU)	ND	480.00 ± 25.46	526.00 ± 19.80	614.00 ± 5.66
PFU per 10 <sup>6</sup> A. nidulans	ND	39.18 ± 0.41	29.06 ± 0.50	24.14 ± 0.21
PFUs change rate for treatment/control	ND	1.40 ± 0.06	1.41 ± 0.01	1.28 ± 0.09
PFU per 10 <sup>6</sup> A. nidulans treated/control	ND	3.00	1.60	1.80
PIR (%)	ND	188.37 ± 1.80	58.19 ± 14.00	79.88 ± 10.68

PIR – Percentage of Increase of Release. ND – Not Detectable.

The comparison of the treated AN-T with the control was summarized in Table 1. In the concentration of 3.1 × 10<sup>-4</sup> M, the PFUs were obvious at 6 hours after addition of copper; it induced 1.37 ± 0.08 (483.00 ± 18.39 / 353.00 ± 32.57) times the control. At 24 hours and 48 hours after addition of copper, the PFUs were significantly reduced, with only 0.43 ± 0.01 (160.00 ± 11.31 / 372.00 ± 16.97) times and 0.12 ± 0.01 (57.00 ± 9.90 / 479.00 ± 36.77) times of the control. The PFU per 10<sup>6</sup> A. nidulans with copper of 3.1 × 10<sup>-4</sup> M was 2.00 (27.44/13.57), 0.78 (14.29/18.37) and 0.35 (4.67/13.42) times of the control at 6, 24 and 48 hours respectively. With concentrations of 3.1 ×

10<sup>-5</sup> M, PFUs were 1.18 ± 0.09 times (416.00 ± 8.49 / 353.00 ± 32.57), 0.93 ± 0.01 times (345.00 ± 18.39 / 372.00 ± 16.97) and 1.01 ± 0.06 times (483.00 ± 9.90 / 479.00 ± 36.77) of the control at 6, 24 and 48 hours respectively after the addition of copper. The PFU per 10<sup>6</sup> A. nidulans with copper of 3.1 × 10<sup>-5</sup> M was 1.80 (24.83/13.57), 1.20 (21.30/18.33) and 2.00 (25.76/13.42) times of the control at 6, 24 and 48 hours respectively after the addition of copper. With a concentration of 3.1 × 10<sup>-6</sup> M, the number of PFUs was 1.40 ± 0.06 times (480.00 ± 25.46 / 353.00 ± 32.57), 1.40 ± 0.01 times (526.00 ± 19.80 / 372.00 ± 16.67) and 1.28 ± 0.09 times (614.00 ±



**Figure 3**  
**Percentage of Increase of Release (PIR) from CuSO<sub>4</sub> induction.** Heavy metal CuSO<sub>4</sub> induction: PIR at 6 hours, 24 hours, and 48 hours after addition of different concentrations of CuSO<sub>4</sub> at day 4 and non-CuSO<sub>4</sub> added as a control.

5.66 / 479.00 ± 36.77) of the control at 6, 24 and 48 hours respectively after the addition of copper. The PFU per 10<sup>6</sup> *A. nidulans* with copper of 3.1 × 10<sup>-6</sup> M was 3.00 (39.18/13.57), 1.60 (29.06/18.37) and 1.80 (24.14/13.42) times of the control at 6, 24 and 48 hours respectively after the addition of copper. Concentrations of 3.1 × 10<sup>-3</sup> M may be too high to be inducers for releasing of temperate cyanophage AS-1 (Figure 1). This concentration of copper may be toxic for the growth of the cells and induce lethality through different mechanisms (4).

From this study, the Percentage of Increase of Release (PIR) was also calculated for different conditions. The results indicated that 6 hours after addition of copper, 102.20 ± 5.19 %, 82.98 ± 8.61 % and 188.37 ± 1.80 % of increase of release were observed at 3.1 × 10<sup>-4</sup> M, 3.1 × 10<sup>-5</sup> M and 3.1 × 10<sup>-6</sup> M of CuSO<sub>4</sub> respectively. 24 hours after the addition of copper, the induction efficiency was not of major consequence with 3.1 × 10<sup>-4</sup> M of CuSO<sub>4</sub>. The PIR was negative with a value of -22.20 ± 12.60 %. The PIR was 15.95 ± 8.79 % and 58.19 ± 14.00 % at 3.1 × 10<sup>-5</sup> M and 3.1 × 10<sup>-6</sup> M of CuSO<sub>4</sub> respectively. 48 hours after addition of copper, the PIR for 3.1 × 10<sup>-4</sup> M of CuSO<sub>4</sub> was -65.20 ± 3.65 %. The PIR was 91.95 ± 17.32 % and 79.88 ± 10.68 % at 3.1 × 10<sup>-5</sup> M and 3.1 × 10<sup>-6</sup> M of CuSO<sub>4</sub> respectively (Figure 3).

While there is no clear evidence to explain why induction decreases over time, it is possible that either the phage/host interaction stabilizes after the initial stress or the toxic effect of heavy metal on the host causes a disruption in phage production.

Although the heavy metal induction rates varied depending on the concentrations of the heavy metal, the overall induction of copper compared to control is clear. The results suggest that Cu<sup>2+</sup> is a significant inducer for temperate AS-1 released from AN-T. The results correlated well with the study of induction for marine cyanobacterial lysogen although AS-1 release rate and induction rate by copper were much lower than the marine cyanophage/cyanobacterial lysogen studies [14,21,26]. Further study with other reported inducers mitomycin C and UV was also carried out to compare the PIR of both mitomycin C and UV with copper studies. The maximum PIR for different factors are showed in table 2. It is indicated that copper, UV and mitomycin C are able to induce the release of phage with PIR of 188.37 ± 1.80, 154.38 ± 15.00, and 162.86 ± 4.00 respectively.

## Conclusion

These results suggest that AS-1 lysogenic phage can be induced by copper with a concentration range from 3.1 × 10<sup>-6</sup> M to 3.1 × 10<sup>-4</sup> M. The best condition for phage induction occurred at 6 hours after addition of all these concentrations. Copper concentrations of 3.1 × 10<sup>-6</sup> M showed the highest level of viral induction. Cu<sup>2+</sup> is an important inducer for lysogenic cyanobacterial cells and consequently could be a potential trigger in the cyanobacteria population in freshwater aquatic environments.

## Methods

### 1. Maintenance of cultures of *Anacystis nidulans* and AS-1

#### 1. Culture and maintenance of *Anacystis nidulans*

*Anacystis nidulans* was obtained from Dr. R. McGowan, Brooklyn College, N.Y. The culture was inoculated aseptically in a 250 ml Erlenmeyer flask with 100 ml Mauro's Modified Medium (3 M medium) at pH 7.9 [27]. The culture was grown in ambient temperature, with constant fluorescent light and continuous agitation at 100 rpm. Cell growth was monitored by direct cell count using a hemacytometer and turbidity studied using a Bausch & Lomb Spectronic 20 at OD<sub>750 nm</sub> [13]. The cultures of *A. nidulans* were checked periodically for bacteria contamination by plating 100 μl of the culture on nutrient agar plates and observing after a 2 to 3 day incubation period. The stock cultures were maintained on 3 M agar plates and slants that were made with 3 M medium containing 2 % agar.

#### 2. Cultures, maintenance and titering of cyanophage AS-1

AS-1 was cultured aseptically in 250 ml Erlenmeyer flasks containing exponentially growing *Anacystis nidulans*. Sterile NaCl was added to the infected culture at a final concentration of 0.1 M. The flasks were gently shaken for 1 hour at room temperature to facilitate adsorption of the virus to the surface of the cell. The infected cultures were then incubated at room temperature under continuous cool-white fluorescent light. The growth of AS-1 was mon-

**Table 2: Maximum percentage of increase of release (PIR) of copper, mitomycin C and UV. Comparison of maximum PIR of copper, mitomycin C and UV at different conditions is shown.**

Factor	Conditions	Percentage of Increase of Release (PIR)
CuSO <sub>4</sub>	3.1 × 10 <sup>-6</sup> M at 6 hours of induction	188.37 ± 2.00
UV	Exposure for 2.5 minutes	154.38 ± 15.00
Mitomycin C	0.5 µg/ml at 6 hours of induction	162.86 ± 4.00

itored by checking the lysis of the host cell. Host cell lysis was determined by turbidity studies using a Baush & Lomb Spectronic 20 at OD<sub>750 nm</sub> [28]. The lysis curve was generated by determining a decrease in the turbidity of the infected culture as well as by direct cell count using a hemacytometer as previously described.

The population of AS-1 was also monitored by plaque forming units (PFU). Pure non-viral infected *A. nidulans* (10 ml; AN-P) culture was centrifuged at 5,000 rpm for 10 minutes and the cell pellet was collected. At different time intervals, 2.5 ml were removed from cultures of temperate *A. nidulans* (AN-T) treated with different concentrations of copper and added into the cell pellet and mixed well. Melted 1 % 3 M soft agar (1 ml) was added to the mixture and vortexed. The mixture was then poured onto pre-warmed 2 % 3 M agar plates. After the soft agar solidified, the plate was placed under continuous "cool-white" fluorescent light for 5–7 days until the plaques (clear zone) were formed, and counted.

## II. Copper induction

Five ml of AN-T were inoculated respectively into 5 flasks containing 95 ml of 3 M medium to achieve a concentration of 1.0 × 10<sup>7</sup> cells/ml. The cultures were grown for 4 days to reach exponential growth stage. Copper was then added to the cultures respectively using the following concentrations: CuSO<sub>4</sub> 3.1 × 10<sup>-3</sup> M, 3.1 × 10<sup>-4</sup> M, 3.1 × 10<sup>-5</sup> M, and 3.1 × 10<sup>-6</sup> M; a culture with no heavy metal was used as a control. The growth of AN-T was monitored by direct cell count using a hemacytometer and turbidity measured using a Baush & Lomb Spectronic 20 at OD<sub>750 nm</sub> for an 11 day period. The released AS-1 in the culture was monitored by the plaque plating method at 6 hours, 24 hours and 48 hours after addition of copper.

$$\text{Percentage of Increase of Release (PIR)} = \left( \frac{\text{PFU per } 10^6 \text{ cells of treated} - \text{PFU per } 10^6 \text{ cells of control}}{\text{PFU per } 10^6 \text{ cells of control}} \right) \times 100\%$$

## Authors' contributions

LHL designed this study and supervised DL and SH at Montclair State University (MSU) and drafted the manuscript. DL, PJP, SH and TC carried out experiments; monitored the growth of AN, PFU of AS-1 and analyzed the data by ratio of release, times of induction and PIR. PJP and TC are research affiliates at MSU; they worked with DL and SH in the lab and drafted the manuscript. JGG,

QCV, and BKL supervised DL, PJP, SH and TC and drafted the manuscript.

## Acknowledgements

SH was supported by an assistantship from MSU. LHL, JGG, QCV and BKL acknowledge financial support and release time from Faculty Scholarship Incentive Program (FSIP) of College of Science and Mathematics (CSAM) at MSU.

## References

- Lee LH, Lustigman B: **Effect of aluminum and pH on the growth of *Anacystis nidulans***. *Bull Environ Contam Toxicol* 1991, **46**:720-726.
- Lee LH, Lustigman B: **Effect of lead and cobalt on the growth of *Anacystis nidulans***. *Bull Environ Contam Toxicol* 1992, **48**:230-236.
- Lee LH, Lustigman B: **Effect of mercury and cadmium on the growth of *Anacystis nidulans***. *Bull Environ Contam Toxicol* 1992, **49**:272-278.
- Lee LH, Lustigman B: **Effect of copper on the growth of *Anacystis nidulans***. *Bull Environ Contam Toxicol* 1993, **50**:600-607.
- Lee LH, Lustigman B, Dandorf D: **Effect of manganese and zinc on the growth of *Anacystis nidulans***. *Bull Environ Contam Toxicol* 1994, **53**:158-165.
- Lustigman B, Lee LH, Weiss-Magasic C: **Effect of cobalt and pH on the growth of *Chlamydomonas reinhardtii***. *Bull Environ Contam Toxicol* 1995, **55**:65-72.
- Lustigman B, Lee LH, Khalil A: **Effect of nickel and pH on the growth of *Chlorella vulgaris***. *Bull Environ Contam Toxicol* 1995, **55**:73-80.
- Lee LH, Lustigman B: **Effect of barium and nickel on the growth of *Anacystis nidulans***. *Bull Environ Contam Toxicol* 1996, **56**:985-992.
- Lee LH, Lustigman B, Murray S, Koepp S: **Effect of selenium on the growth of the cyanobacterium *Anacystis nidulans***. *Bull Environ Contam Toxicol* 1999, **62**:591-599.
- Lee LH, Lustigman B, Murray S: **Effect of mercuric chloride and selenium dioxide on the growth of cyanobacteria, *Anacystis nidulans***. *Bull Environ Contam Toxicol* 2002, **69**:900-907.
- Mitchell R: **Water Pollution Microbiology**. Volume 1–65. London and NY: John Wiley and Sons; 1972:205-288.
- Moran JM, Morgan MD, Wiersma JH: **Introduction to Environmental Sciences**. New York: W. H. Freeman and Co; 1986:218-226.
- Lee LH, Blamire J, McGowan R: **DNA metabolism during infection of *A. nidulans* by the cyanophage AS-1 (II): Characterization of the unique species of DNA**. *Microbios* 1983, **35**:111-118.
- Lu J, Chen F, Hodson RE: **Distribution, isolation, host specificity and diversity of cyanophages infecting marine *Synechococcus* spp. in river estuaries**. *Appl Environ Microbiol* 2001, **67**:3285-3290.
- McDaniel L, Houchin LA, Williamson SJ, Paul JH: **Plankton blooms: Lysozyme in marine *Synechococcus***. *Nature* 2002, **415**:496.
- Suttle CA, Chan AM: **Marine cyanophages infecting oceanic and coastal strains of *Synechococcus*: abundance, morphology, cross-infectivity and growth characteristics**. *Mar Ecol Prog Ser* 1993, **92**:99-109.
- Suttle CA, Chan AM: **Dynamics and distribution of cyanophages and their effect on marine *Synechococcus* spp.** *Appl Environ Microbiol* 1994, **60**:3167-3174.
- Waterbury JB, Valois FW: **Resistance to co-occurring phages enables marine *Synechococcus* communities to coexist with cyanophage abundant in seawater**. *Appl Environ Microbiol* 1993, **59**:3393-3399.

19. Bergh O, Borsheim KY, Bratbak G, Haldal M: **High abundance of viruses found in aquatic environments.** *Nature* 1989, **340**:467-469.
20. Proctor LM, Furham JA: **Viral mortality of marine bacteria and cyanobacteria.** *Nature (London)* 1990, **343**:60-62.
21. Paul JH, Jiang SC: **Lysogeny and transduction.** In *Marine microbiology. Methods in microbiology Volume 30.* Edited by: Paul JH. London, United Kingdom: Academic Press; 2001:105-125.
22. Williamson SJ, Houchin LA, McDaniel L, Paul JH: **Seasonal variation in lysogeny as depicted by prophage induction in Tampa Bay, Florida.** *Appl Environ Microbiol* 2002, **68**:4307-4314.
23. Wilson WH, Joint IR, Carr NG, Mann NH: **Isolation and molecular characterization of five marine cyanophages propagated on *Synechococcus* spp. Strain WH7803.** *Appl Environ Microbiol* 1993, **59**:3736-3743.
24. Jiang SC, Paul JH: **Significance of lysogeny in the marine environment studies with isolates and a model of lysogenic phage production.** *Microb Ecol* 1988, **35**:235-243.
25. Bisen PS, Audholia S, Bhatnagar AK: **Mutation to resistance for virus AS-1 in the cyanobacterium *Anacystis nidulans*.** *Microbiol Lett* 1985, **29**:7-13.
26. Sode K, Oonari R, Oozeki M: **Induction of a temperate marine cyanophage by heavy metal.** *J Mar Biotechnol* 1997, **5**:178-180.
27. Meyers J, Kratz WA: **Relation between pigment content and photosynthetic characteristics in a blue-green algae.** *J Gen Physiol* 1955, **39**:11-22.
28. Lee LH, Cohn G, Blamire J, McGowan R: **DNA metabolism during the infection of *A. nidulans* by cyanophage AS-1 (VI): UV-induced alteration of the AS-1/*A. nidulans* lytic cycle.** *Microbios* 1985, **43**:245-259.

Publish with **BioMed Central** and every scientist can read your work free of charge

"BioMed Central will be the most significant development for disseminating the results of biomedical research in our lifetime."

Sir Paul Nurse, Cancer Research UK

Your research papers will be:

- available free of charge to the entire biomedical community
- peer reviewed and published immediately upon acceptance
- cited in PubMed and archived on PubMed Central
- yours — you keep the copyright

Submit your manuscript here:  
[http://www.biomedcentral.com/info/publishing\\_adv.asp](http://www.biomedcentral.com/info/publishing_adv.asp)

