

Age-related macular degeneration-associated variants at chromosome 10q26 do not significantly alter *ARMS2* and *HTRA1* transcript levels in the human retina

Atsuhiko Kanda,¹ Dwight Stambolian,² Wei Chen,³ Christine A. Curcio,⁴ Gonçalo R. Abecasis,³
Anand Swaroop¹

¹Neurobiology Neurodegeneration & Repair Laboratory (N-NRL), National Eye Institute, National Institutes of Health, Bethesda, MD; ²Department of Ophthalmology and Human Genetics, University of Pennsylvania, Philadelphia, PA; ³Center for Statistical Genetics, Department of Biostatistics, University of Michigan, Ann Arbor, MI; ⁴Department of Ophthalmology, University of Alabama at Birmingham, Birmingham, AL

Purpose: Multiple studies demonstrate a strong association between three variants at chromosome 10q26 – rs10490924, del443ins54, and rs11200638 – near the age-related maculopathy susceptibility 2 (*ARMS2*) and high-temperature requirement factor A1 (*HTRA1*) genes with susceptibility to age-related macular degeneration (AMD). In different reports, the del443ins54 and rs11200638 variants are suggested to affect *ARMS2* mRNA stability and/or *HTRA1* mRNA expression, respectively. The goal of this study is to examine whether these AMD-associated variants alter expression levels of *ARMS2* and *HTRA1* in human retina samples.

Methods: Genomic DNA and total RNA were obtained from 35 human retinas (three young controls, average age=32 years; twenty aged controls, average age=72 years; and twelve AMD retinas, average age=77 years) using standard procedures. As *ARMS2* exhibits higher expression in the human placenta, we also included eighteen placenta samples in our analysis. Four polymorphisms – rs2736911, rs10490924, del443ins54, and rs11200638 – were genotyped by PCR followed by sequencing. Expression of *ARMS2*, *HTRA1* and three endogenous control genes (rRNA [*rRNA*], hypoxanthine phosphoribosyltransferase 1 [*HPRT1*], and glyceraldehyde-3-phosphate dehydrogenase [*GAPDH*]) was measured by real-time quantitative RT-PCR using Taqman gene expression or SYBR Green assays.

Results: *ARMS2* and *HTRA1* mRNA levels did not show a significant difference in expression among the control (young and elderly) and AMD retinas. No association of del443ins54 and rs11200638 variants was detected with mRNA expression levels of *ARMS2* or *HTRA1* in the retina. Human placenta samples showed high variability in expression levels.

Conclusions: We did not find association between AMD susceptibility variants at 10q26 and steady-state expression levels of either *ARMS2* or *HTRA1* in the human retina.

Age-related macular degeneration (AMD) is a prevalent and complex disorder that primarily affects the central region of the retina (macula) and is a leading cause of untreatable visual impairment and legal blindness in older individuals [1,2]. Early stages of AMD exhibit pigmentary and morphological changes in the retinal pigment epithelium (RPE). Large and soft drusen in the macula are identified as strong risk factors for the development of advanced forms of AMD, which include central geographic atrophy and choroidal neovascularization [3-6]. Advanced age, inherited susceptibility involving several genes, and environmental risk factors are involved in the pathogenesis of AMD [6].

Genetic studies have demonstrated the contribution of multiple susceptibility loci; variants on chromosomes 1q31 and 10q26 account for a major part of the genetic

susceptibility to AMD [6,7]. Several independent reports have elucidated the importance of Y402H and multiple non-coding variants in the complement factor H (*CFH*) gene on chromosome 1q31 in AMD susceptibility [8-13]. Single nucleotide polymorphisms (SNPs) in three other complement factor genes (*C2/BF/C3*, and *CFI*) are also associated with susceptibility to AMD [14-17]. More recent genome wide association studies have also implicated variants near tissue inhibitor of metalloproteinase 3 (*TIMP3*) and several high density lipoprotein (HDL)-associated loci in AMD susceptibility [18,19].

Outside the complement pathway, the major genetic contributor to AMD susceptibility is the locus at 10q26. The association signals center over two neighboring genes, *ARMS2* (age-related maculopathy susceptibility 2, previously called LOC387715; OMIM +611313) [20,21] and *HTRA1* (high-temperature requirement factor A1; OMIM 602194) [22,23], suggesting two plausible candidates. The AMD-associated SNP rs11200638 in the promoter of *HTRA1* was reported to result in increased expression levels of *HTRA1*

Correspondence to: Anand Swaroop, Neurobiology-Neurodegeneration & Repair Laboratory, National Eye Institute, NIH, Bldg 6/338, MSC0610, 6 Center Drive, Bethesda, MD, 20892; Phone: 301-435-5754; FAX: 301-480-1769; email: swaroopa@nei.nih.gov

mRNA and protein [22,23]. Our previous studies revealed that the SNP [rs10490924](#) in exon 1 of the *ARMS2* gene is strongly associated with AMD and that [rs11200638](#) had no significant impact on *HTRA1* promoter activity in various cell lines [24]. Another group reported an insertion/deletion polymorphism, [NM_001099667.1: c.* 372_815del443ins54](#) in 3'-UTR of *ARMS2*, which is strongly associated with AMD; this variant deletes the polyadenylation signal and inserts a 54-bp AU-rich element, resulting in an unstable *ARMS2* transcript (Figure 1A) [25]. As strong linkage disequilibrium exists across the *ARMS2/HTRA1* region, genetic studies are likely insufficient to distinguish between the causal association of two genes with AMD. More recently, one report suggests that the haplotype carrying [del443ins54](#) and [rs11200638](#) affects *HTRA1* expression; this study used in vitro assays and RNA from human placenta samples [26]. Another recent report shows that [del443ins54](#) does not lead to a decrease in the stability of *ARMS2* mRNA in lymphocytes [27]. We reasoned that human retina samples are necessary to clarify the impact of AMD-associated 10q26 SNPs on the biologic activity of *ARMS2* and *HTRA1* as reflected by their steady-state mRNA levels. Here, we report the results of our concurrent genotyping and qRT-PCR analyses of 35 retinas and 18 placenta samples.

METHODS

Human tissues: Thirty-two retina tissues were collected from Caucasian individuals less than 6 h post-mortem and obtained from the National Disease Research Interchange (Philadelphia, PA), and three retina samples were from the Age-Related Histopathology Laboratory at the University of Alabama at Birmingham. Human placentas were obtained from the Labor and Delivery floor at the Hospital University of Pennsylvania within 4 h of delivery.

Genotyping: Nucleic acids (total RNA with genomic DNA) were isolated from tissues using TRIzol (Invitrogen, Carlsbad, CA). A part of the sample was used to perform PCR amplifications with ExTaq (TaKaRa Bio USA, Madison, WI). The PCR amplified DNA was sequenced directly according to ABI BigDye terminator kit version 3.1 using ABI 3130xl Genetic Analyzer (Applied Biosystems, Foster City, CA). Primers for PCR amplification of 10q26 SNPs and sequencing are Fwd 5'-CCT TTG TCA CCA CAT TAT GTC C-3' and Rev 5'-GCC TGA TCA TCT GCA TTT CTT AC-3' for [rs2736911](#) and [rs10490924](#), Fwd 5'-ATC TGG ATT CCT CTC TGT CAC TG-3' and Rev 5'-AAT GAA GTC CAA GCT TCT TAC CC-3' for [del443ins54](#), Fwd 5'-GAC GTG TGA AGG ATT CTA TTC GAA-3' and Rev 5'-GCG TCC TTC AAA CTA ATG GAA CTT-3' for [rs11200638](#).

qRT-PCR analysis and statistical methods: We checked RNA with gel and/or bioanalyzer. Reverse transcription (RT) was performed with Superscript II (Invitrogen) and oligo dT(20) primers per standard protocols [28]. Taqman gene expression

assays were purchased for *HTRA1*, *GAPDH*, *HPRT1*, and 18S ribosomal (*rRNA*) and used on a 7900HT Fast Real-Time PCR System (Applied Biosystems) per the manufacturer's instructions. SYBR Green PCR Master Mix (Applied Biosystems) was used for the *ARMS2* expression assay. The *ARMS2* amplification primers were Fw 5'-GAT GGC AAG TCT GTC CTC CT-3' and Rv 5'-TTG CTG CAG TGT GGA TGA TAG-3'. Real-Time qRT-PCR reactions were performed in quadruplicate. The relative quantification of the target transcript was performed using SDS2.0 and RQ manager software (Applied Biosystems). Gene expression levels were calculated using the $2^{-\Delta\Delta Ct}$ method [29]. All experimental sample were normalized using human *rRNA* as an internal control. *rRNA* is a good internal control for gene expression in retinas, and showed uniform values. Other internal controls also showed similar results. The significance of the difference with a reference experiment was calculated using the Student's *t*-test, ANOVA (ANOVA) and linear regression.

RESULTS

We first examined whether there is any change in the expression of *ARMS2* and *HTRA1* between normal aged and AMD retinas without genotype constraints. The aged retinas were obtained from 20 unrelated individuals (average age=71.8 year), while the AMD group consisted of 12 retinas (average age=77.1 year). Gene expression was measured by real-time qRT-PCR and normalized to *rRNA* expression, with aged normal retinas as a reference. There was no significant difference in either *ARMS2* or *HTRA1* mRNA expression levels between the two groups (*ARMS2*, fold change average=1.051, $p=0.487$; *HTRA1*, fold change average=0.991, $p=0.918$). As predicted, the housekeeping genes (used as controls), *HPRT1* and *GAPDH*, did not show significant change in expression with age (fold change average=0.963, $p=0.376$ and fold change average=0.997, $p=0.934$), validating a high quality of RNA from the human retinas for qRT-PCR analysis.

To determine changes in RNA expression due to aging, we compared the gene expressions of normal young (average age=32.3 year, three retinas) and elderly (average age=75.5 year, six retinas) groups having common variants at all four genotyped loci ([rs2736911](#), [rs10490924](#), [del443ins54](#), and [rs11200638](#)); no significant differences were obtained (*ARMS2*, fold change average=0.944, $p=0.719$; *HTRA1*, fold change average=1.078, $p=0.634$; *HPRT1* fold change average=0.987, $p=0.910$ and *GAPDH* fold change average=0.974, $p=0.778$) (Figure 1B-E). Aged normal retinas were taken as a reference in this comparison. Additionally, we did not find any significant expression differences based on gender within the aged retinas.

To assess the impact of [rs11200638](#) on *HTRA1* [23] and of [del443ins54](#) on *ARMS2* mRNA [25], we determined the genotypes at the four 10q26 SNPs and measured the

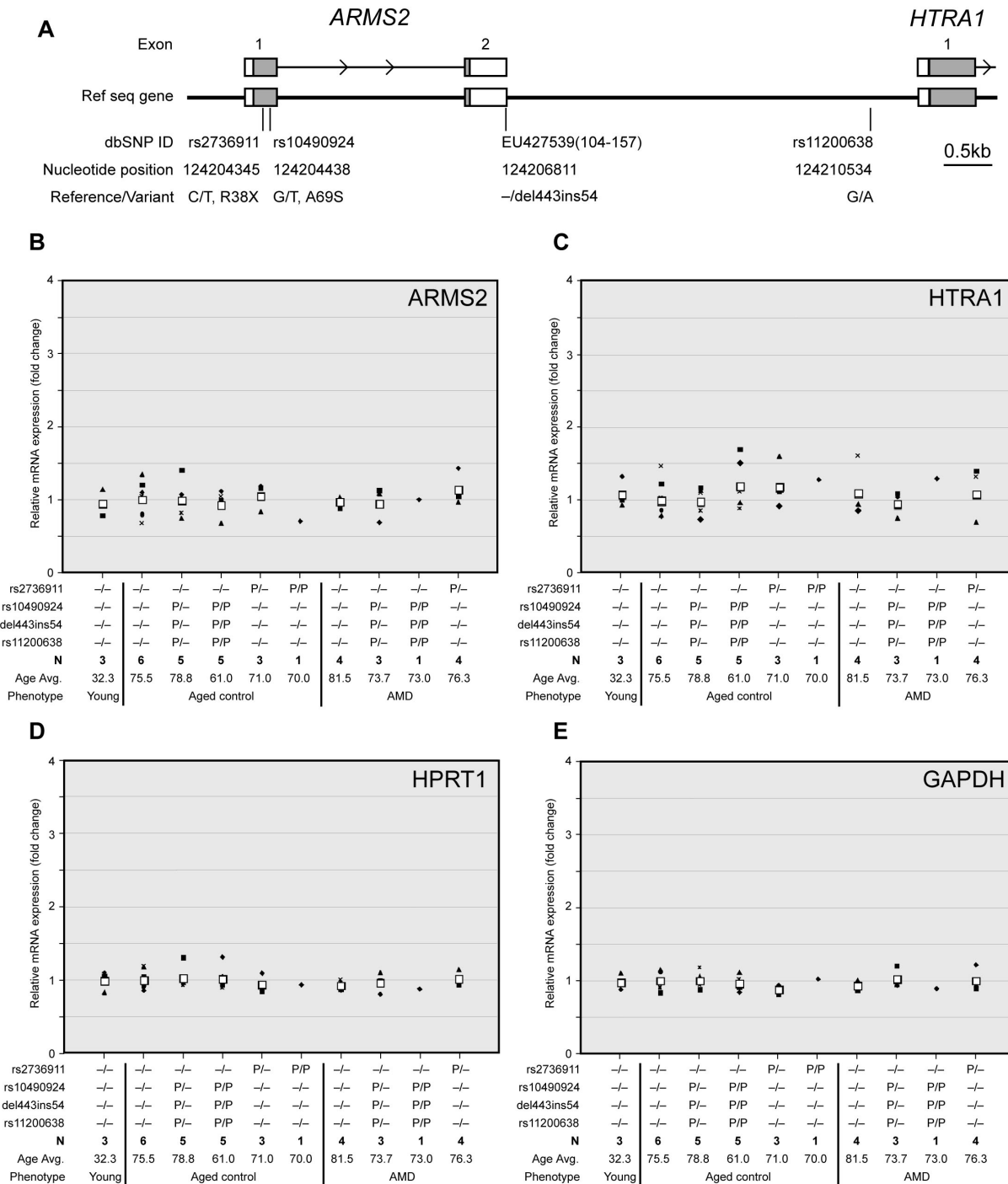


Figure 1. Relationship of *ARMS2* and *HTRA1* expression in the human retina to the genotypes at 10q26. **A**: Schematic representation of positions of polymorphic variants on chromosome 10q26. White boxes indicate exons and gray shows translated regions. Numbers indicate the nucleotide position in [NT_030059.12](http://www.ncbi.nlm.nih.gov/nuccore/NT_030059.12) (NCBI Reference Sequence). **B-E**: Gene expression in the human retina. We investigated the effect of AMD-associated variants near *ARMS2* and *HTRA1* genes on expression levels of *ARMS2* and *HTRA1* in human retina samples. Fold changes in expression of the target genes (*ARMS2*, *HTRA1*, *HPRT1*, and *GAPDH*) relative to the internal control gene (*rRNA*) were correlated to the genotypes of four polymorphisms at 10q26. The samples were analyzed after qRT-PCR reactions performed in quadruplicate with Taqman gene expression or SYBR Green assays. The fold change average in expression of the target gene was calculated using the $2^{-\Delta\Delta Ct}$ method; $\Delta\Delta Ct = (C_t, Target - C_t, rRNA)_{\text{experiment}} - (C_t, Target - C_t, rRNA)_{\text{reference}}$. Gene expressions in wild-type (with common variants at the four loci) older normal retinas were used as a reference. Black unique symbols (e.g., triangle, square, diamond, dash, X's cross, circle) indicate individual sample changes, and white square shows the average. Abbreviations: Avg. represents average; N represents number of samples with a given genotype; P represents polymorphism (P/P represents homozygous; P/- represents heterozygous change. Variants are in the left column).

expression levels of *ARMS2* and *HTRA1* in all 35 retinas using real-time qRT-PCR. First, we conducted general tests for all samples to study the association between gene expression and the four polymorphisms regardless of disease and age status. ANOVA and linear regression were performed respectively on free and additive models for genotypes. There is no significant gene expression difference ($p > 0.05$). A similar result was obtained for analysis in case or control group only. Furthermore, we analyzed the expression data by stratifying on different genotypes. Heterozygous [rs10490924](#), [del443ins54](#), and [rs11200638](#) did not affect the mRNA levels of *ARMS2* and *HTRA1* genes (*ARMS2*, fold change average=0.989, $p=0.944$; *HTRA1*, fold change average=0.985, $p=0.916$). No expression changes were detected even in individuals homozygous for these SNPs (*ARMS2*, fold change average=0.926, $p=0.589$; *HTRA1*, fold change average=1.197, $p=0.302$; Figure 1B,C). Additionally, retinas heterozygous or homozygous for the [rs2736911](#) SNP did not show a significant change in expression (heterozygote, *ARMS2*, fold change average=1.046, $p=0.785$; *HTRA1*, fold change average=1.184, $p=0.435$) (homozygote, *ARMS2*, fold change=0.706; *HTRA1*, fold change=1.287; Figure 1B,C). Although our results for homozygous [rs2736911](#) are represented by only one retina, it does not appear to affect the expression; this SNP causes nonsynonymous R38X alteration in *ARMS2* and it is not reportedly associated with AMD risk. No significant differences in expression were observed for *HPRT1* and *GAPDH* ($p > 0.05$; Figure 1D,E).

We then compared expression between six aged normal and four AMD (age average=81.5 year) retinas that did not carry the polymorphic variants at the four 10q26 loci tested. *ARMS2* and *HTRA1* expression did not reveal a significant difference (*ARMS2*, fold change average=0.970, $p=0.793$; *HTRA1*, fold change average=1.104, $p=0.585$; *HPRT1*, fold change average=0.924, $p=0.296$; *GAPDH*, fold change average=0.929, $p=0.307$; Figure 1B-E). Further analysis showed no significant differences in *HTRA1* and *ARMS2* expressions in AMD retinas that were heterozygous for [rs10490924](#), [del443ins54](#), and [rs11200638](#) (*ARMS2*, fold change average=0.943, $p=0.771$; *HTRA1*, fold change average=0.953, $p=0.769$), and heterozygous [rs2736911](#) (*ARMS2*, fold change average=1.133, $p=0.383$; *HTRA1*, fold change average=1.084, $p=0.685$) compared to normal retinas with the common alleles (Figure 1B,C). While there was only one AMD retina homozygous for [del443ins54](#) or [rs11200638](#), the expression levels exhibited no appreciable change from normal retinas (*ARMS2*, fold change=1.001; *HTRA1*, fold change=1.084). *HPRT1* and *GAPDH* expression in these retinas did not reveal a significant difference ($p > 0.05$; Figure 1D,E). We also evaluated the expression of *ARMS2* and *HTRA1* in human placentas. However, the expression levels of these two genes demonstrated wide variations that could not be explained by their genotype (Figure 2A,B). Interestingly, the two housekeeping genes (*HPRT1* and

GAPDH) did not manifest the large variations in expressions observed for *ARMS2* or *HTRA1* (Figure 2C,D).

DISCUSSION

Gene expression changes have been investigated in multiple species and scenarios to study the genetic basis of variations in gene regulation [30-32]. The binding of transcriptional factors to a specific sequence constitutes a key aspect of gene regulation. Other means of regulating gene expression include DNA methylation, alternative splicing, and mRNA stability [33]. Genetic variations (DNA polymorphisms) are known to be associated with phenotypic variation and may alter gene expression patterns [34].

A genetic locus at chromosome 10q26 provides strong susceptibility to AMD; specifically, two AMD-associated polymorphisms near *ARMS2* and *HTRA1* genes have been suggested to alter the gene expression of either one or the other gene [23,25,26]. The investigations of associated polymorphisms and their impact on expression levels have been elusive and contradictory. To examine this issue further and in the context of aging and AMD retinas, we concurrently obtained genotypes of human normal and AMD retinas and examined whether specific haplotypes or polymorphisms at 10q26 might be correlated to steady-state transcript levels of *ARMS2* or *HTRA1*. In our study, none of the four polymorphisms ([rs2736911](#), [rs10490924](#), [del443ins54](#), and [rs11200638](#)) either as homozygotes or heterozygotes or their associated haplotypes significantly affected the *ARMS2* or *HTRA1* gene expression levels. One study recently reported that haplotypes with [del443ins54](#) and [rs11200638](#) variants have an effect on *HTRA1* and *ARMS2* expression in genotyped human placentas [26]. However, another report presented that the [del443ins54](#) variant does not change *ARMS2* mRNA stability in lymphocytes [27], which is consistent with our data from retina samples. In our study, *ARMS2* and *HTRA1* gene expression levels in the placentas exhibited wider variations than in retinas, thus making it difficult to draw a definitive conclusion. While all our retinas were collected from Caucasian subjects, no ethnic information was available for our placenta samples. The wide variations in *ARMS2* and *HTRA1* may be a reflection of ethnic differences; curiously however, the housekeeping genes (*HPRT1* and *GAPDH*) did not exhibit such differences in expression. The two previous studies examined the effects of [del443ins54](#) and [rs11200638](#) variants in transfected human embryonic kidney cells or transfected mouse RPE [25,26]; however, there is a poor homology in the human and mouse DNA sequence about 13kb upstream from the *HTRA1* transcriptional start site, and the *ARMS2* gene, including [del443ins54](#), is primate specific. We suggest that *ARMS2* and *HTRA1* mRNA expression and stability are regulated via distinct mechanisms in the retina compared to other tissues. It should be noted that the [del443ins54](#) variant sequences in our samples are similar to

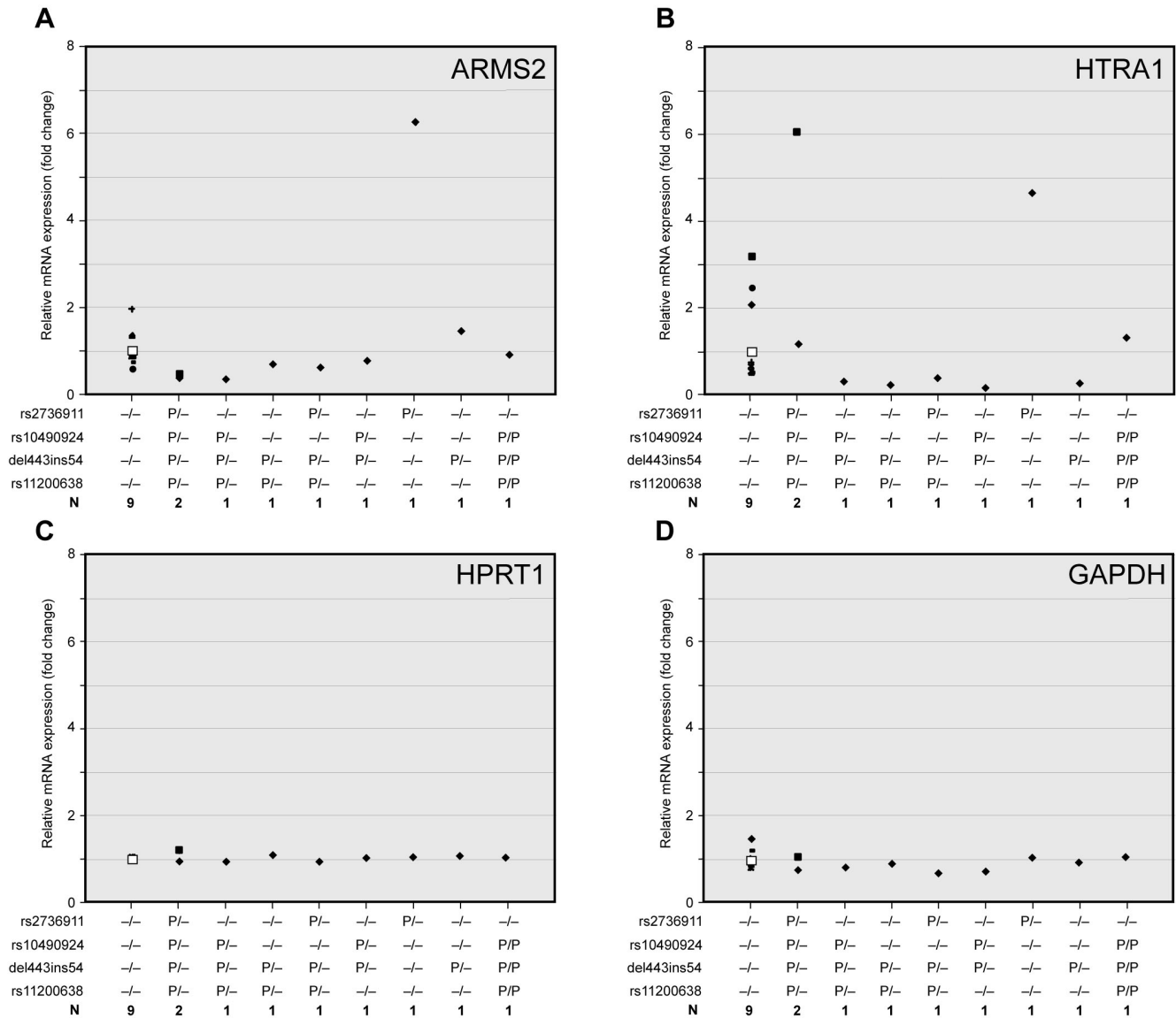


Figure 2. Relationship of *ARMS2* and *HTRA1* expression in the human placenta to the genotypes at 10q26. We show the effect of AMD-associated variants near *ARMS2* and *HTRA1* genes on *ARMS2* and *HTRA1* expression in human placenta samples. **A-D**: The fold change in expression of the target genes (*ARMS2*, *HTRA1*, *HPRT1*, and *GAPDH*) relative to the internal control gene (*rRNA*) were correlated to genotypes of corresponding placenta samples. Real-time qRT-PCR reactions were performed in quadruplicate with Taqman gene expression or SYBR Green assays. The fold change average in the expression of the target gene was calculated using the $2^{-\Delta\Delta C_t}$ method; $\Delta\Delta C_t = (C_t, \text{Target} - C_t, rRNA)_{\text{experiment}} - (C_t, \text{Target} - C_t, rRNA)_{\text{reference}}$. Gene expressions in wild-type (having common variants at all four genotyped loci) placentas were used as a reference. cBlack unique symbols (e.g., triangle, square, diamond, dash, X's cross, circle) indicate individual sample changes, and white square shows the average. Abbreviations: N represents number of samples with given genotypes; P represents polymorphism (P/P represents homozygous; P/- represents heterozygous change. Variants are shown in the left column).

those reported previously [25,35], and no additional changes are identified as reported recently [27].

Interestingly, *ARMS2* and *HTRA1* expression levels in a single human retina sample that is homozygous for the *ARMS2*-R38X variant (rs2736911) are similar to those of other genotypes. This variant is predicted to produce a truncated *ARMS2* protein. We must note that AMD is a multifactorial disease with numerous susceptibility loci [18];

therefore, the altered *ARMS2* expression or function alone will not be sufficient to cause AMD. The *ARMS2* gene exists only in primates but not in other vertebrates, thus it is unlikely to have an essential or critical role in retinal physiology. We hypothesize that *ARMS2* has a unique supportive function in photoreceptors and/or retinal pigment epithelium of primates.

In conclusion, our studies do not support the direct association between the genotype of rs11200638 and

HTRA1 mRNA levels, and between the del443ins54 variant and *ARMS2* mRNA levels in human retina samples we have analyzed. We suggest that comprehensive investigations at the protein and function levels, not only the protein expression, will be necessary to further clarify the roles of *ARMS2* and/or *HTRA1* in AMD etiology. Such studies will require well characterized and specific antibodies for *ARMS2* and *HTRA1* and investigations with human (or primate) tissues/samples carrying distinct AMD-associated genotypes.

ACKNOWLEDGMENTS

We thank Matthew Brooks, Tiziana Cogliati and members of the Swaroop laboratory for advice and comments. This work was supported by intramural funds and grants from the National Eye Institute, The Foundation Fighting Blindness, and Research to Prevent Blindness. Also, this work was supported from International Retinal Research Foundation (C.C.).

REFERENCES

- Sarks SH. Ageing and degeneration in the macular region: a clinico-pathological study. *Br J Ophthalmol* 1976; 60:324-41. [PMID: 952802]
- Fine SL, Berger JW, Maguire MG, Ho AC. Age-related macular degeneration. *N Engl J Med* 2000; 342:483-92. [PMID: 10675430]
- Bird AC, Bressler NM, Bressler SB, Chisholm IH, Coscas G, Davis MD, de Jong PT, Klaver CC, Klein BE, Klein R, Mitchell P, Sarks JP, Sarks SH, Soubrane G, Taylor HR, Vingerling JR, The International ARM Epidemiological study group. An international classification and grading system for age-related maculopathy and age-related macular degeneration. *Surv Ophthalmol* 1995; 39:367-74. [PMID: 7604360]
- de Jong PT. Age-related macular degeneration. *N Engl J Med* 2006; 355:1474-85. [PMID: 17021323]
- Zarbin MA. Current concepts in the pathogenesis of age-related macular degeneration. *Arch Ophthalmol* 2004; 122:598-614. [PMID: 15078679]
- Swaroop A, Chew EY, Rickman CB, Abecasis GR. Unraveling a multifactorial late-onset disease: from genetic susceptibility to disease mechanisms for age-related macular degeneration. *Annu Rev Genomics Hum Genet* 2009; 10:19-43. [PMID: 19405847]
- Fisher SA, Abecasis GR, Yashar BM, Zarepari S, Swaroop A, Iyengar SK, Klein BE, Klein R, Lee KE, Majewski J, Schultz DW, Klein ML, Seddon JM, Santangelo SL, Weeks DE, Conley YP, Mah TS, Schmidt S, Haines JL, Pericak-Vance MA, Gorin MB, Schulz HL, Pardi F, Lewis CM, Weber BH. Meta-analysis of genome scans of age-related macular degeneration. *Hum Mol Genet* 2005; 14:2257-64. [PMID: 15987700]
- Edwards AO, Ritter R 3rd, Abel KJ, Manning A, Panhuysen C, Farrer LA. Complement factor H polymorphism and age-related macular degeneration. *Science* 2005; 308:421-4. [PMID: 15761121]
- Hageman GS, Anderson DH, Johnson LV, Hancox LS, Taiber AJ, Hardisty LI, Hageman JL, Stockman HA, Borchardt JD, Gehrs KM, Smith RJ, Silvestri G, Russell SR, Klaver CC, Barbazetto I, Chang S, Yannuzzi LA, Barile GR, Merriam JC, Smith RT, Olsh AK, Bergeron J, Zernant J, Merriam JE, Gold B, Dean M, Allikmets R. A common haplotype in the complement regulatory gene factor H (HF1/CFH) predisposes individuals to age-related macular degeneration. *Proc Natl Acad Sci USA* 2005; 102:7227-32. [PMID: 15870199]
- Haines JL, Hauser MA, Schmidt S, Scott WK, Olson LM, Gallins P, Spencer KL, Kwan SY, Noureddine M, Gilbert JR, Schnetz-Boutaud N, Agarwal A, Postel EA, Pericak-Vance MA. Complement factor H variant increases the risk of age-related macular degeneration. *Science* 2005; 308:419-21. [PMID: 15761120]
- Klein RJ, Zeiss C, Chew EY, Tsai JY, Sackler RS, Haynes C, Henning AK, SanGiovanni JP, Mane SM, Mayne ST, Bracken MB, Ferris FL, Ott J, Barnstable C, Hoh J. Complement factor H polymorphism in age-related macular degeneration. *Science* 2005; 308:385-9. [PMID: 15761122]
- Hughes AE, Orr N, Esfandiary H, Diaz-Torres M, Goodship T, Chakravarthy U. A common CFH haplotype, with deletion of CFHR1 and CFHR3, is associated with lower risk of age-related macular degeneration. *Nat Genet* 2006; 38:1173-7. [PMID: 16998489]
- Li M, Atmaca-Sonmez P, Othman M, Branham KE, Khanna R, Wade MS, Li Y, Liang L, Zarepari S, Swaroop A, Abecasis GR. CFH haplotypes without the Y402H coding variant show strong association with susceptibility to age-related macular degeneration. *Nat Genet* 2006; 38:1049-54. [PMID: 16936733]
- Gold B, Merriam JE, Zernant J, Hancox LS, Taiber AJ, Gehrs K, Cramer K, Neel J, Bergeron J, Barile GR, Smith RT, Hageman GS, Dean M, Allikmets R. Variation in factor B (BF) and complement component 2 (C2) genes is associated with age-related macular degeneration. *Nat Genet* 2006; 38:458-62. [PMID: 16518403]
- Maller J, George S, Purcell S, Fagerness J, Altshuler D, Daly MJ, Seddon JM. Common variation in three genes, including a noncoding variant in CFH, strongly influences risk of age-related macular degeneration. *Nat Genet* 2006; 38:1055-9. [PMID: 16936732]
- Yates JR, Sepp T, Matharu BK, Khan JC, Thurlby DA, Shahid H, Clayton DG, Hayward C, Morgan J, Wright AF, Armbricht AM, Dhillon B, Deary IJ, Redmond E, Bird AC, Moore AT. Complement C3 variant and the risk of age-related macular degeneration. *N Engl J Med* 2007; 357:553-61. [PMID: 17634448]
- Fagerness JA, Maller JB, Neale BM, Reynolds RC, Daly MJ, Seddon JM. Variation near complement factor I is associated with risk of advanced AMD. *Eur J Hum Genet* 2009; 17:100-4. [PMID: 18685559]
- Chen W, Stambolian D, Edwards AO, Branham KE, Othman M, Jakobsdottir J, Tosakulwong N, Pericak-Vance MA, Campochiaro PA, Klein ML, Tan PL, Conley YP, Kanda A, Kopplin L, Li Y, Augustaitis KJ, Karoukis AJ, Scott WK, Agarwal A, Kovach JL, Schwartz SG, Postel EA, Brooks M, Baratz KH, Brown WL, Group CR, Brucker AJ, Orlinn A, Brown G, Ho A, Regillo C, Donoso L, Tian L, Kaderli B, Hadley D, Hagstrom SA, Peachey NS, Klein R, Klein BEK, Gotoh N, Yamashiro K, Ferris F, Fagerness JA, Reynolds R,

- Farrer LA, Kim IK, Miller JW, Cortón M, Carracedo A, Sanchez-Salorio M, Pugh EW, Doheny KF, Brion M, DeAngelis MM, Week DE, Zack D, Chew EY, Heckenlively JR, Yoshimura N, Iyengar SK, Francish PJ, Katsanis N, Seddon JM, Haines JL, Gorin MB, Abecasis GR, Swaroop A. Genetic Variants near TIMP3 and HDL-Associated Loci Influence Susceptibility to Age-Related Macular Degeneration. *Proc Natl Acad Sci USA* 2010; 107:7401-6. [PMID: 20385819]
19. Neale BM, Fagerness J, Reynolds R, Sobrin L, Parker M, Raychaudhuri S, Tan PL, Oh EC, Merriam JE, Souied E, Bernstein PS, Li B, Frederick JM, Zhang K, Brantley MA Jr, Lee AY, Zack DJ, Campochiaro B, Campochiaro P, Ripke S, Smith RT, Barile GR, Katsanis N, Allikmets R, Daly MJ, Seddon JM. Genome-wide association study of advanced age-related macular degeneration identifies a role of the hepatic lipase gene (LIPC). *Proc Natl Acad Sci USA* 2010; 107:7395-400. [PMID: 20385826]
20. Jakobsdottir J, Conley YP, Weeks DE, Mah TS, Ferrell RE, Gorin MB. Susceptibility genes for age-related maculopathy on chromosome 10q26. *Am J Hum Genet* 2005; 77:389-407. [PMID: 16080115]
21. Rivera A, Fisher SA, Fritsche LG, Keilhauer CN, Lichtner P, Meitinger T, Weber BH. Hypothetical LOC387715 is a second major susceptibility gene for age-related macular degeneration, contributing independently of complement factor H to disease risk. *Hum Mol Genet* 2005; 14:3227-36. [PMID: 16174643]
22. Dewan A, Liu M, Hartman S, Zhang SS, Liu DT, Zhao C, Tam PO, Chan WM, Lam DS, Snyder M, Barnstable C, Pang CP, Hoh J. HTRA1 promoter polymorphism in wet age-related macular degeneration. *Science* 2006; 314:989-92. [PMID: 17053108]
23. Yang Z, Camp NJ, Sun H, Tong Z, Gibbs D, Cameron DJ, Chen H, Zhao Y, Pearson E, Li X, Chien J, Dewan A, Harmon J, Bernstein PS, Shridhar V, Zabriskie NA, Hoh J, Howes K, Zhang K. A variant of the HTRA1 gene increases susceptibility to age-related macular degeneration. *Science* 2006; 314:992-3. [PMID: 17053109]
24. Kanda A, Chen W, Othman M, Branham KE, Brooks M, Khanna R, He S, Lyons R, Abecasis GR, Swaroop A. A variant of mitochondrial protein LOC387715/ ARMS2, not HTRA1, is strongly associated with age-related macular degeneration. *Proc Natl Acad Sci USA* 2007; 104:16227-32. [PMID: 17884985]
25. Fritsche LG, Loenhardt T, Janssen A, Fisher SA, Rivera A, Keilhauer CN, Weber BH. Age-related macular degeneration is associated with an unstable ARMS2 (LOC387715) mRNA. *Nat Genet* 2008; 40:892-6. [PMID: 18511946]
26. Yang Z, Tong Z, Chen Y, Zeng J, Lu F, Sun X, Zhao C, Wang K, Davey L, Chen H, London N, Muramatsu D, Salasar F, Carmona R, Kasuga D, Wang X, Bedell M, Dixie M, Zhao P, Yang R, Gibbs D, Liu X, Li Y, Li C, Li Y, Campochiaro B, Constantine R, Zack DJ, Campochiaro P, Fu Y, Li DY, Katsanis N, Zhang K. Genetic and functional dissection of HTRA1 and LOC387715 in age-related macular degeneration. *PLoS Genet* 2010; 6:e1000836. [PMID: 20140183]
27. Wang G, Spencer KL, Scott WK, Whitehead P, Court BL, Ayala-Haedo J, Mayo P, Schwartz SG, Kovach JL, Gallins P, Polk M, Agarwal A, Postel EA, Haines JL, Pericak-Vance MA. Analysis of the indel at the ARMS2 3'UTR in age-related macular degeneration. *Hum Genet* 2010; 127:595-602. [PMID: 20182747]
28. Sambrook J, Russell DW. *Molecular Cloning, A Laboratory Manual*, Third Edition. New York: Cold Spring Harbor Laboratory Press; 2001.
29. Livak KJ, Schmittgen TD. Analysis of relative gene expression data using real-time quantitative PCR and the 2(-Delta Delta C(T)). *Method. Methods.* 2001; 25:402-8.
30. Schadt EE, Monks SA, Drake TA, Lusk AJ, Che N, Colinayo V, Ruff TG, Milligan SB, Lamb JR, Cavet G, Linsley PS, Mao M, Stoughton RB, Friend SH. Genetics of gene expression surveyed in maize, mouse and man. *Nature* 2003; 422:297-302. [PMID: 12646919]
31. Cheung VG, Spielman RS, Ewens KG, Weber TM, Morley M, Burdick JT. Mapping determinants of human gene expression by regional and genome-wide association. *Nature* 2005; 437:1365-9. [PMID: 16251966]
32. Stranger BE, Forrest MS, Clark AG, Minichiello MJ, Deutsch S, Lyle R, Hunt S, Kahl B, Antonarakis SE, Tavaré S, Deloukas P, Dermitzakis ET. Genome-wide associations of gene expression variation in humans. *PLoS Genet* 2005; 1:e78. [PMID: 16362079]
33. Wray GA. Transcriptional regulation and the evolution of development. *Int J Dev Biol* 2003; 47:675-84. [PMID: 14756343]
34. Pastinen T, Ge B, Hudson TJ. Influence of human genome polymorphism on gene expression. *Hum Mol Genet* 2006; 15:R9-16. [PMID: 16651375]
35. Gotoh N, Nakanishi H, Hayashi H, Yamada R, Otani A, Tsujikawa A, Yamashiro K, Tamura H, Saito M, Saito K, Iida T, Matsuda F, Yoshimura N. ARMS2 (LOC387715) variants in Japanese patients with exudative age-related macular degeneration and polypoidal choroidal vasculopathy. *Am J Ophthalmol* 2009; 147:1037-41. [PMID: 19268887]

The print version of this article was created on 10 July 2010. This reflects all typographical corrections and errata to the article through that date. Details of any changes may be found in the online version of the article.