

Corrigendum: Observation of a topological crystalline insulator phase and topological phase transition in $\text{Pb}_{1-x}\text{Sn}_x\text{Te}$

Su-Yang Xu, Chang Liu, N. Alidoust, M. Neupane, D. Qian, I. Belopolski, J.D. Denlinger, Y.J. Wang, H. Lin, L.A. Wray, G. Landolt, B. Slomski, J.H. Dil, A. Marcinkova, E. Morosan, Q. Gibson, R. Sankar, F.C. Chou, R.J. Cava, A. Bansil & M.Z. Hasan

Nature Communications 3:1192 doi: 10.1038/ncomms2191 (2012); Published 13 Nov 2012; Updated 4 Aug 2016

In Fig. 2a and d of this Article, a uniform background subtraction was applied to the ARPES low-energy electronic structure measurements. In Fig. 2d, this background subtraction unintentionally was only applied to the central part of the figure. This affected the noise in the background but not the meaningful signal data features discussed in the paper, and therefore does not affect any conclusion of the paper. To avoid potential confusion, in the updated version of Fig. 2a and d, raw data without any background subtraction are presented. The corrected version of Fig. 2 appears below as Fig. 1. The figure legend is correct.

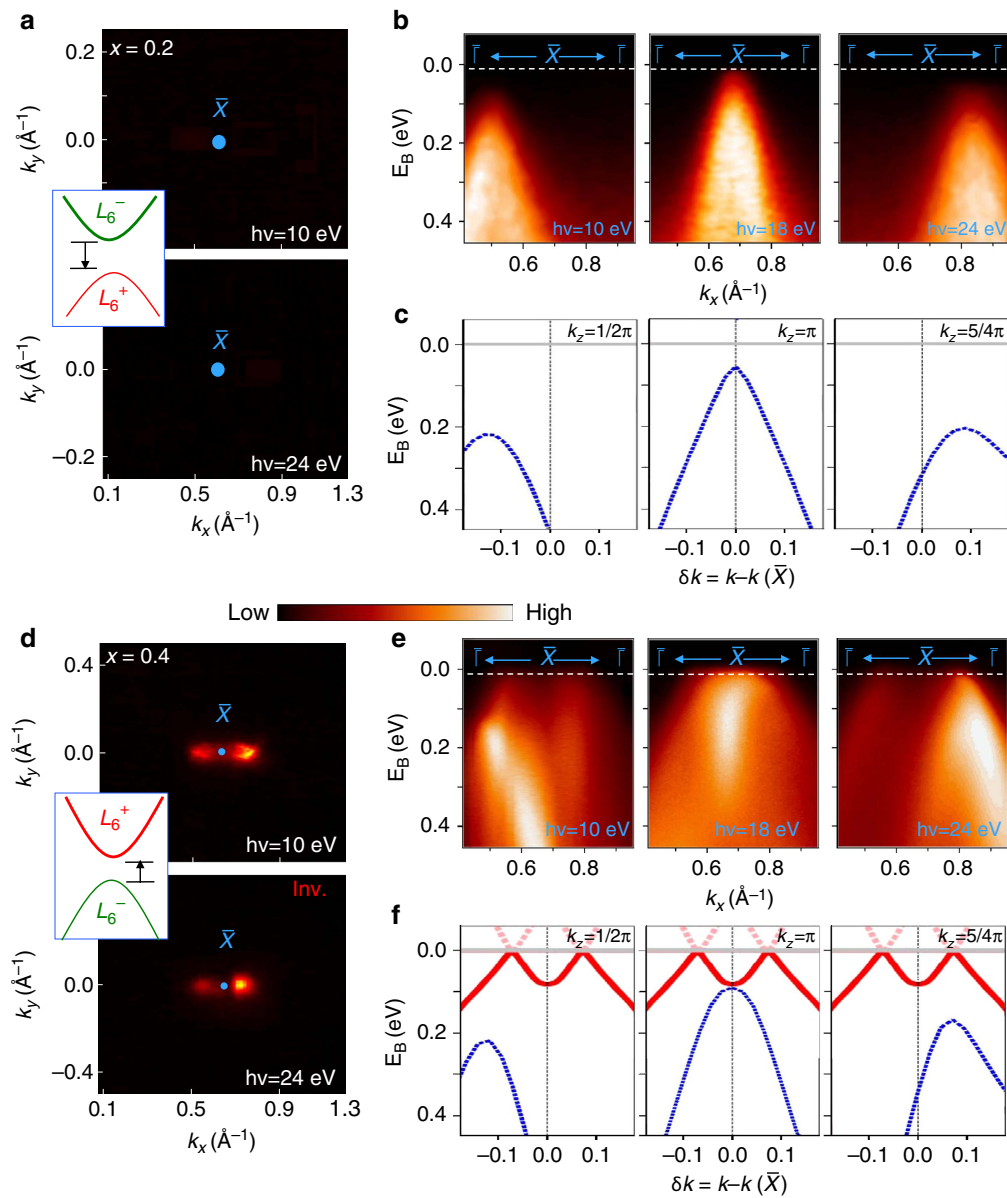


Figure 1