

## Case Report



# Successful Treatment of a Korean Infant with Giant Cell Hepatitis with Autoimmune Hemolytic Anemia Using Rituximab

Young Ho Kim <sup>1</sup>, Ju Whi Kim <sup>1</sup>, Eun Joo Lee <sup>1</sup>, Gyeong Hoon Kang <sup>2</sup>,  
Hyoung Jin Kang <sup>3</sup>, Jin Soo Moon <sup>1</sup>, and Jae Sung Ko <sup>1</sup>

<sup>1</sup>Department of Pediatrics, Seoul National University Hospital, Seoul, Korea

<sup>2</sup>Department of Pathology, Seoul National University Hospital, Seoul, Korea

<sup>3</sup>Department of Pediatrics, Seoul National University College of Medicine, Seoul National University Cancer Research Institute, Seoul National University Children's Hospital, Seoul, Korea

## OPEN ACCESS

Received: Sep 30, 2019

Accepted: Jan 28, 2020

### Correspondence to

Jae Sung Ko

Department of Pediatrics, Seoul National University Hospital, 101 Daehak-ro, Jongno-gu, Seoul 03080, Korea.

E-mail: kojs@snu.ac.kr

Copyright © 2020 by The Korean Society of Pediatric Gastroenterology, Hepatology and Nutrition

This is an open-access article distributed under the terms of the Creative Commons Attribution Non-Commercial License (<https://creativecommons.org/licenses/by-nc/4.0/>) which permits unrestricted non-commercial use, distribution, and reproduction in any medium, provided the original work is properly cited.

### ORCID iDs

Young Ho Kim

<https://orcid.org/0000-0002-5135-5296>

Ju Whi Kim

<https://orcid.org/0000-0001-8011-3547>

Eun Joo Lee

<https://orcid.org/0000-0001-6016-2333>

Gyeong Hoon Kang

<https://orcid.org/0000-0003-2380-6675>

Hyoung Jin Kang

<https://orcid.org/0000-0003-1009-6002>

Jin Soo Moon

<https://orcid.org/0000-0001-9760-297X>

Jae Sung Ko

<https://orcid.org/0000-0002-3064-2974>

## ABSTRACT

Giant cell hepatitis with autoimmune hemolytic anemia (AHA) is a rare disease of infancy characterized by the presence of both Coombs-positive hemolytic anemia and progressive liver disease with giant cell transformation of hepatocytes. Here, we report a case involving a seven-month-old male infant who presented with AHA followed by cholestatic hepatitis. The clinical features included jaundice, pallor, and red urine. Physical examination showed generalized icterus and splenomegaly. The laboratory findings suggested warm-type AHA with cholestatic hepatitis. Liver biopsy revealed giant cell transformation of hepatocytes and moderate lobular inflammation. The patient was successfully treated with four doses of rituximab. Early relapse of hemolytic anemia and hepatitis was observed, which prompted the use of an additional salvage dose of rituximab. He is currently in clinical remission.

**Keywords:** Hepatitis; Autoimmune hemolytic anemia; Rituximab

## INTRODUCTION

Giant cell hepatitis (GCH) with autoimmune hemolytic anemia (AHA) is a rare disease of infancy, characterized by the presence of both Coombs-positive hemolytic anemia and progressive liver disease with giant cell transformation of hepatocytes [1]. Even though its exact pathophysiology is unclear, it may involve B-cell-mediated autoimmunity [2]. Steroids and azathioprine, which are known to be effective in treating 'classical' autoimmune hepatitis, have failed to show long-term efficacy in the treatment of GCH-AHA. However, there are several reports of successful treatment with the anti-CD20 monoclonal antibody, rituximab. We report a case of GCH-AHA associated with jaundice, pallor, and red urine, where remission was achieved following treatment with rituximab.

**Conflict of Interest**

The authors have no financial conflicts of interest.

**CASE REPORT**

A seven-month-old male infant was referred to the Seoul National University Children's Hospital due to severe anemia. Over a period of one month, he had intermittent red urine. However, this worsened four days prior to the initial visit. He also had jaundice, which was noticed one week prior to visiting the hospital. He had no family history of autoimmune disease or liver disease, except for a gallstone in his father which was treated by cholecystectomy. However, it was unknown whether the patient's father had a pigmented gallstone. Physical examination revealed jaundice, pallor, and splenomegaly.

The results after laboratory examination are as follows: white cell blood count, 11,700/mm<sup>3</sup>; hemoglobin, 3.5 g/dL; platelet count, 295,000/mm<sup>3</sup>; and reticulocytes, 32.7%. Severe normocytic hypochromic anemia was observed and several spherocytes and teardrop cells were observed in the peripheral blood smear. Both direct and indirect Coombs test results were positive, and Coombs anti-IgG and anti-C3d were positive. Low plasma haptoglobin and increased plasma hemoglobin were detected. The liver function test revealed the following: aspartate aminotransferase (AST), 180 IU/L; alanine aminotransferase (ALT), 169 IU/L; serum total bilirubin, 4.8 mg/dL; and serum conjugated bilirubin, 2.03 mg/dL. The prothrombin time international normalized ratio was 0.95 and plasma ammonia level was 56 μmol/L.

To evaluate the etiology of the cholestatic hepatitis, autoimmune, infectious, and metabolic causes were investigated. Serological test results for hepatitis A, B, and C; Epstein-Barr virus; herpes simplex virus; rubella virus; and toxoplasma were all negative. The cytomegalovirus (CMV) IgM test result was positive and the alpha-fetoprotein level was 30.3 ng/mL. The immunoglobulin G, A, and M levels were 622 mg/dL, 28 mg/dL, and 211 mg/dL, respectively. Test results for the anti-neutrophil cytoplasmic antibody, anti-liver-kidney-microsomal antibody 1, and anti-smooth muscle antibody were negative. The test result for the anti-nuclear antibody was weakly positive (1:40). Plasma amino acid analysis showed increased levels of methionine, lysine, and threonine, which was interpreted as a nonspecific result of liver injury. Urine organic acid analysis was nonspecific. Liver ultrasonography revealed no significant abnormalities.

The laboratory findings suggested warm-type autoimmune hemolytic anemia with infantile cholestasis of unknown cause. The patient was admitted and was administered intravenous (IV) methylprednisolone. On day 4, the IV methylprednisolone was switched to an equivalent dose of oral prednisolone (2 mg/kg daily). Red blood cell transfusion was performed four times. Following treatment with ursodeoxycholic acid (UDCA) and steroids, the liver function test results improved and the hemolytic anemia was stabilized. Thus, the steroid dose was tapered to 1.5 mg/kg daily. One month later, the patient developed jaundice and was producing pinkish urine again. The liver function test results were as follows: AST, 309 IU/L; ALT, 903 IU/L; total bilirubin, 4.4 mg/dL; and conjugated bilirubin, 2.33 mg/dL. Abdominal ultrasonography revealed slightly heterogeneous hepatic parenchymal echogenicity with mild splenomegaly. Liver biopsy revealed multinucleated hepatocytes, hepatocyte rosette formation, moderate lobular inflammation with neutrophilic infiltration, and frequent spotty necrosis. Portal inflammation was minimal with no bile duct abnormalities and fibrosis (**Fig. 1**). There was no evidence of CMV infection.

The association of hepatitis and warm-type autoimmune hemolytic anemia in a young infant, the absence of autoantibodies, the infectious and metabolic causes, and the histological

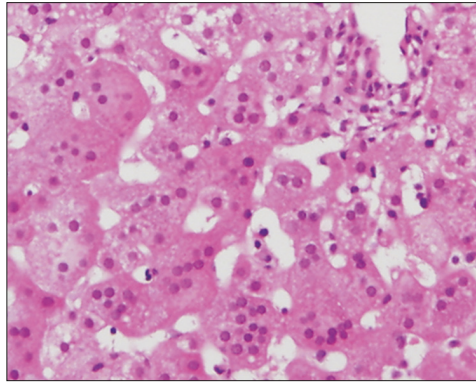


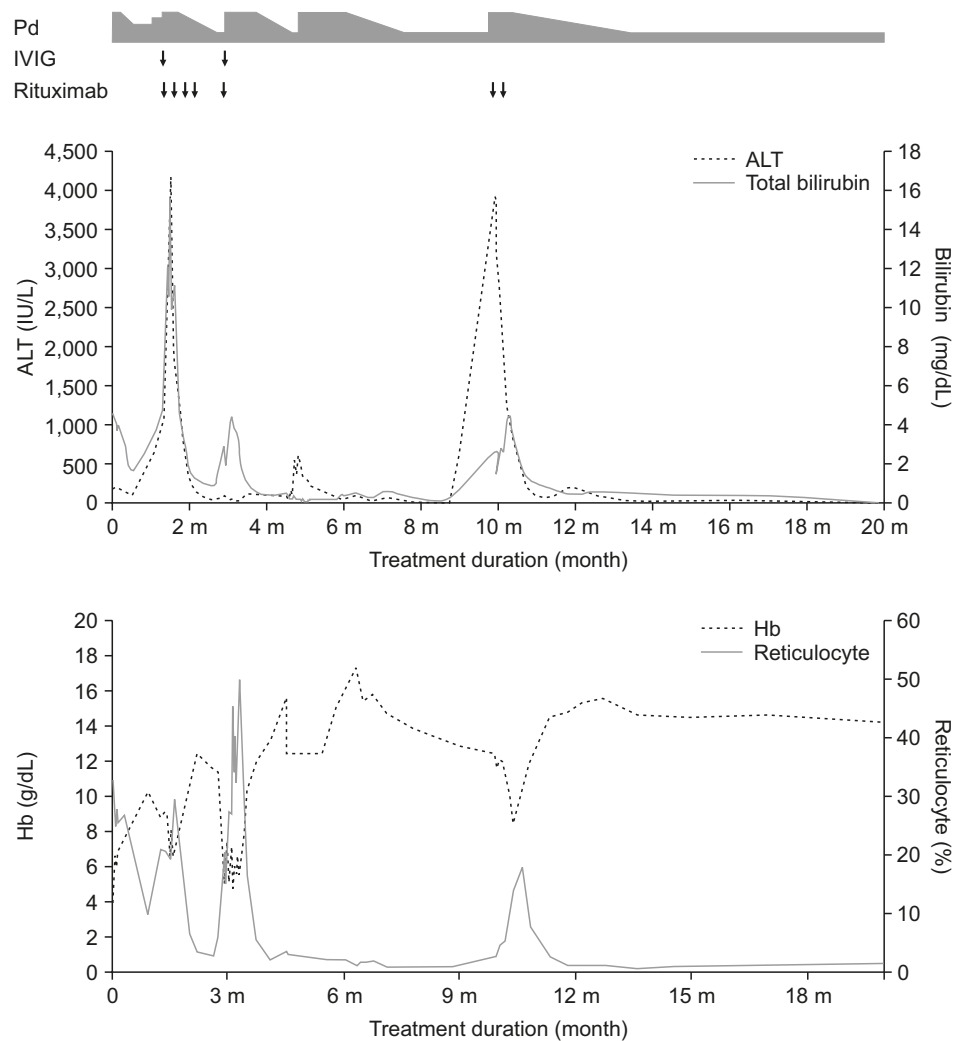
Fig. 1. Liver biopsy showing giant cell transformation of hepatocytes (H&E,  $\times 400$ ).

evidence of giant cell transformation of hepatocytes led to the diagnosis of GCH-AHA. During the follow-up period, the patient had progressive anemia and worsening hepatitis. The peak values were measured on day 7 of admission and were as follows: AST, 1,781 IU/L; ALT, 4,136 IU/L; total bilirubin, 15.6 mg/dL; and conjugated bilirubin, 9.52 mg/dL. On day 4, he received a high dose (2 g/kg daily) of intravenous immunoglobulin (IVIG). On day 6, the prednisolone dose was increased to 2 mg/kg daily, and he received rituximab infusion at a dose of 375 mg/m<sup>2</sup>. The serum AST, ALT, and bilirubin levels began to decline on day 8. He received a total of four weekly doses of rituximab. One month after the diagnosis, the liver function was normal. Six weeks after the diagnosis, hemolytic anemia, however, relapsed with a hemoglobin level of 4.9 g/dL. He received a high dose (2 g/kg daily) of IVIG and one additional dose of rituximab. His anemia improved after two weeks of treatment. Three months after diagnosis, he was admitted to the intensive care unit for respiratory failure. Combined pneumocystis and CMV pneumonia were diagnosed and he received IV trimethoprim-sulfamethoxazole, pentamidine, and ganciclovir. Nine months after the diagnosis, the relapse of hemolytic anemia and hepatitis was observed. However, it was controlled by administering one additional dose of rituximab. The patient has been in clinical remission for 10 months after the last relapse and continues to receive oral prednisolone (0.5 mg/kg daily) along with UDCA (Fig. 2).

## DISCUSSION

GCH-AHA is a descriptive term for a condition in which both Coombs-positive anemia and severe hepatitis characterized by giant cell transformation of the hepatocytes are present [1,3]. It is a very rare disease and less than 100 cases have been reported in the English literature since its first recognition. Infants and young children are predominantly affected. The median age at onset is eight months [4]. Majority of the cases have been described in Caucasian populations. However, very few cases from East Asia have also been reported [5].

Most patients initially present with signs of hemolytic anemia, such as pallor, jaundice, and hepatosplenomegaly [3]. Hepatitis usually occurs within one week to 15 months (usually one to two months) following the diagnosis of AHA [6]. Although the onset of hepatitis is usually insidious, it can rapidly progress to liver failure [1,7]. Prognosis is often poor, and the mortality rate can reach as high as 30% [3]. The causes of death range from disease progression to liver failure and severe infection due to prolonged immunosuppression [1,3].



**Fig. 2.** Treatment course and response to therapy. ALT, total bilirubin, Hb, and reticulocyte percentage are shown over time. Dose of steroid is represented by the thickness of gray bar; the highest point being 2 mg/kg/day. IVIG and rituximab administration is marked by arrows.

ALT: alanine aminotransferase, Hb: hemoglobin, IVIG: intravenous immunoglobulin, Pd: prednisolone.

The pathogenesis of the disease is unclear; however, several studies have suggested the involvement of an autoimmune mechanism based on the clinical response to immunosuppressive therapies [1,8]. The absence of the conventional autoantibodies associated with autoimmune hepatitis and the different histopathological patterns suggest that the mechanism that underlies the pathogenesis of GCH-AHA differs from that of 'classical' autoimmune hepatitis [1]. This finding is consistent with the frequently reported resistance to steroids and azathioprine in GCH-AHA patients [3].

Whittington et al. [2] proposed B-cell-mediated autoimmunity as a major mechanism involved in the development of this disease. In GCH-AHA patients, giant cell transformation of hepatocytes, marked alterations in the lobular structure, and minimal portal inflammation are observed. A similar pattern is also observed in gestational alloimmune liver disease (GALD), which is caused by IgG-driven complement-mediated hepatocyte injury. C5b-9 staining revealed that the pattern of C5b-9 deposition in the hepatocytes of GCH-AHA patients is similar to that observed during GALD, suggesting that a complement-mediated

injury is also involved in GCH-AHA. Based on their observations, the authors concluded that B-cell-mediated autoimmunity may play a role in GCH-AHA. Their finding is further supported by several studies that reported successful treatment with rituximab, which specifically targets B cells [9-11].

For treatment, several immunosuppressants have been tested since the first description of the disease (Table 1) [1-25]. There are several reports of clinical response following treatment with high doses of corticosteroids. However, after tapering the doses, a high rate of recurrence was reported [1,3,12]. Even though successful maintenance with azathioprine has been reported by several authors, there are also frequent reports of refractory diseases [3,8,12]. Trials involving IVIG, cyclosporine, cyclophosphamide, vincristine, plasmapheresis, and alemtuzumab have been reported, with anecdotal success [7,13-16]. Liver transplantation was performed in a small number of patients. However, virtually all cases were complicated

**Table 1.** Therapeutic interventions in previously reported cases of GCH with AHA

Reference	Patient	Therapy	Outcome
Bernard et al., 1981 [1]	1	Pd, AZA	Alive
	2	Pd	Died
	3	Pd	Died
	4	Pd	Died
Imgrueth et al., 1986 [16]	1	Pd, IVIG, VCR, PP	Alive
Brichard et al., 1991 [8]	1	Pd, AZA	Died
	2	Pd, AZA	Alive
Weinstein et al., 1993 [12]	1	Pd	Alive
Perez-Atayde et al., 1994 [22]	1	Pd, IVIG, 6MP	Alive
	2	Pd	Died
Choulot et al., 1996 [23]	1	Pd, AZA, splenectomy	Alive
Melendez et al., 1997 [18]	1	Pd, AZA, CsA	Died
Hadzic et al., 1998 [24]	1	Pd, AZA, CsA, FK506	Died
Hartman et al., 2001 [25]	1	Pd, AZA, CsA, FK506, PP	Died
Gorelik et al., 2004 [4]	1	Pd, AZA, VCR, CsA, RTX, PP	Alive
Akyildiz et al., 2005 [17]	1	Pd, FK506, MMF, LT	Alive
Vajro et al., 2006 [13]	1	Pd, AZA, IVIG, CsA, CPM	Alive
Miloh et al., 2006 [9]	1	Pd, AZA, Sirolimus, IVIG, RTX	Alive
Kashyap et al., 2006 [6]	1	Pd, IVIG, UDCA	Alive
Rovelli et al., 2007 [7]	1	Pd, AZA, CsA, MMF, RTX, alemtuzumab	Alive
Maggiore et al., 2010 [3]	1	Pd, AZA, CsA	Alive
	2	Pd, AZA, CsA, 6MP, MTX, CPM	Died
	3	Pd, AZA, CsA	Alive
	4	Pd, AZA, CsA	Died
	5	Pd, AZA, IVIG, CPM	Alive
	6	Pd, AZA, splenectomy	Alive
	7	Pd, AZA, CsA, splenectomy	Alive
	8	Pd, AZA, CsA, splenectomy	Alive
	9	Pd, AZA	Alive
	10	Pd, AZA	Died
	11	Pd, AZA	Alive
	12	Pd, AZA	Alive
	13	Pd, AZA	Alive
	14	Pd, AZA, CsA, CPM, IVIG, RTX	Alive
	15	Pd, AZA, CsA, LT	Alive
	16	Pd, AZA, CsA, LT	Died
Unal et al., 2010 [19]	1	Pd, AZA, IVIG, RTX	Died
	2	UDCA	Died
	3	Pd, AZA, RTX, UDCA	Alive
Raj et al., 2011 [20]	1	Pd, AZA	Alive
Lega et al., 2013 [14]	1	Pd, IVIG, CsA	Alive
Bouguila et al., 2013 [21]	1	Pd, AZA, IVIG	Died

(continued to the next page)

**Table 1.** (Continued) Therapeutic interventions in previously reported cases of GCH with AHA

Reference	Patient	Therapy	Outcome
Bakula et al., 2014 [11]	1	Pd, AZA, IVIG, CsA, RTX	Alive
	2	Pd, AZA, CsA, IVIG, RTX	Alive
	3	Pd, AZA, PP, IVIG, RTX	Alive
	4	Pd, 6MP, CsA, MMF, RTX	Alive
	5	Pd, CsA	Died
Whittington et al., 2014 [2]	1	Pd, AZA, RTX	Alive
	2	Pd, AZA, RTX	Alive
	3	Pd, LT	Alive
	4	Pd	Died
	5	Pd, AZA	Alive
	6	Pd, AZA, RTX	Alive
Paganelli et al., 2014 [10]	1	Pd, AZA, IVIG, CsA, RTX	Alive
	2	Pd, AZA, IVIG, CsA, RTX	Alive
	3	Pd, AZA, IVIG, CsA, MMF, FK506, RTX	Alive
	4	Pd, IVIG, sirolimus, RTX	Alive
Marsalli et al., 2016 [15]	1	Pd, AZA, FK506, IVIG	Alive
	2	Pd, CsA, IVIG	Alive
	3	Pd, AZA, CsA, IVIG	Alive
	4	Pd, AZA, CsA, IVIG	Alive
	5	Pd, AZA, IVIG	Alive
	6	Pd, AZA, CsA, IVIG	Alive
	7	Pd, IVIG	Alive
Cho et al., 2016 [5]	1	Pd, AZA, UDCA	Alive

GCH: Giant cell hepatitis, AHA: autoimmune hemolytic anemia, Pd: prednisolone, AZA: azathioprine, IVIG: intravenous immune globulin, VCR: vincristine, PP: plasmapheresis, 6MP: 6-mercaptopurine, CsA: cyclosporine A, FK506, tacrolimus, RTX: rituximab, MMF: mycophenolate mofetil, LT: liver transplantation, CPM: cyclophosphamide, UDCA: ursodeoxycholic acid.

by early relapse or graft rejection, and therefore, liver transplantation is no longer recommended presently [17,18].

Gorelik et al. [4] reported the first successful treatment of steroid-resistant anemia in GCH-AHA with an anti-CD20 monoclonal antibody, rituximab. Their rationale was based on the observation that rituximab is safe and effective in treating refractory autoimmune hemolytic anemia. Miloh et al. [9] reported the first successful control of refractory hepatitis in GCH-AHA with rituximab. Since then, an increasing number of patients have been successfully treated with rituximab [2,3,10,11]. Although relapse after rituximab therapy is frequently reported, all but one patient achieved clinical remission after additional doses of rituximab were administered. Only one case involving rituximab-refractory GCH-AHA has been reported so far, and in that case, the GCH-AHA was controlled using an anti-CD52 monoclonal antibody, alemtuzumab [7]. However, in the aforementioned study, three doses of rituximab were administered, whereas in most of the studies, four doses were administered. This difference might have prevented the achievement of clinical remission in their case. Therefore, it is recommended to administer at least four doses of rituximab for initial treatment. Additional doses should be considered if there is incomplete remission or relapse [11].

In our patient, autoimmune hemolytic anemia was the first manifestation of the disease at the age of seven months. IV methylprednisolone and a subsequent high dose of prednisone initially induced remission of anemia; however, a relapse of anemia and aggravation of hepatitis was observed after the dose was tapered. The condition was not controlled until initiation of treatment with rituximab, which led to a marked clinical response. Although there were two episodes of relapse after initial clinical remission, they were effectively controlled by administering additional doses of rituximab. We believe that this is the first

reported case involving the successful treatment of GCH-AHA with rituximab without the use of azathioprine or maintenance immunosuppressants other than steroids (Table 1) [1-25]. The clinical course was complicated due to the coexistence of pneumocystis and CMV pneumonia. Since impairment in T cell immunity is implied in these opportunistic infections, the most likely culprit seems to be the long-term use of high doses of steroids rather than rituximab, which selectively kills B cells.

Steroids and azathioprine are still considered as the first line treatments for GCH-AHA; however, the frequent relapses and serious complications may even result in death [3]. In contrast, there is increasing reports of rituximab leading to the achievement of clinical remission in GCH-AHA. No serious adverse effects have been reported to date, although potential adverse effects include infusion reaction, allergic reaction, increased susceptibility to infection, and hypogammaglobulinemia. Additionally, rituximab has a steroid-sparing effect, which could potentially prevent serious complications as a result of the long-term administration of high doses of steroids [10]. Considering the involvement of B-cell-mediated autoimmunity in the pathogenesis of the disease, early administration of rituximab is recommended. Further studies on the efficacy and safety of rituximab as a first-line treatment are required. Additionally, guidelines for salvage therapy after relapse following the administration of four doses of the drug are also needed.

## REFERENCES

1. Bernard O, Hadchouel M, Scotto J, Odièvre M, Alagille D. Severe giant cell hepatitis with autoimmune hemolytic anemia in early childhood. *J Pediatr* 1981;99:704-11.  
[PUBMED](#) | [CROSSREF](#)
2. Whittington PF, Vos MB, Bass LM, Melin-Aldana H, Romero R, Roy CC, et al. Humoral immune mechanism of liver injury in giant cell hepatitis with autoimmune hemolytic anemia. *J Pediatr Gastroenterol Nutr* 2014;58:74-80.  
[PUBMED](#) | [CROSSREF](#)
3. Maggiore G, Sciveres M, Fabre M, Gori L, Pacifico L, Resti M, et al. Giant cell hepatitis with autoimmune hemolytic anemia in early childhood: long-term outcome in 16 children. *J Pediatr* 2011;159:127-32.e1.  
[PUBMED](#) | [CROSSREF](#)
4. Gorelik M, Debski R, Frangoul H. Autoimmune hemolytic anemia with giant cell hepatitis: case report and review of the literature. *J Pediatr Hematol Oncol* 2004;26:837-9.  
[PUBMED](#)
5. Cho MH, Park HS, Han HS, Bae SH. Giant cell hepatitis with autoimmune hemolytic anemia in a Korean infant. *Pediatr Int* 2016;58:628-31.  
[PUBMED](#) | [CROSSREF](#)
6. Kashyap R, Sarangi JN, Choudhry VP. Autoimmune hemolytic anemia in an infant with giant cell hepatitis. *Am J Hematol* 2006;81:199-201.  
[PUBMED](#) | [CROSSREF](#)
7. Rovelli A, Corti P, Beretta C, Bovo G, Conter V, Mieli-Vergani G. Alemtuzumab for giant cell hepatitis with autoimmune hemolytic anemia. *J Pediatr Gastroenterol Nutr* 2007;45:596-9.  
[PUBMED](#) | [CROSSREF](#)
8. Brichard B, Sokal E, Gosseye S, Buts JP, Gadsseux JF, Cornu G. Coombs-positive giant cell hepatitis of infancy: effect of steroids and azathioprine therapy. *Eur J Pediatr* 1991;150:314-7.  
[PUBMED](#) | [CROSSREF](#)
9. Miloh T, Manwani D, Morotti R, Sukru E, Shneider B, Kerker N. Giant cell hepatitis and autoimmune hemolytic anemia successfully treated with rituximab. *J Pediatr Gastroenterol Nutr* 2007;44:634-6.  
[PUBMED](#) | [CROSSREF](#)
10. Paganelli M, Patey N, Bass LM, Alvarez F. Anti-CD20 treatment of giant cell hepatitis with autoimmune hemolytic anemia. *Pediatrics* 2014;134:e1206-10.  
[PUBMED](#) | [CROSSREF](#)

11. Bakula A, Socha P, Klaudel-Dreszler M, Karolczyk G, Wozniak M, Rutynowska-Pronicka O, et al. Giant cell hepatitis with autoimmune hemolytic anemia in children: proposal for therapeutic approach. *J Pediatr Gastroenterol Nutr* 2014;58:669-73.  
[PUBMED](#) | [CROSSREF](#)
12. Weinstein T, Valderrama E, Pettei M, Levine J. Early steroid therapy for the treatment of giant cell hepatitis with autoimmune hemolytic anemia. *J Pediatr Gastroenterol Nutr* 1993;17:313-6.  
[PUBMED](#) | [CROSSREF](#)
13. Vajro P, Migliaro F, Ruggeri C, Di Cosmo N, Crispino G, Caropreso M, et al. Life saving cyclophosphamide treatment in a girl with giant cell hepatitis and autoimmune haemolytic anaemia: case report and up-to-date on therapeutical options. *Dig Liver Dis* 2006;38:846-50.  
[PUBMED](#) | [CROSSREF](#)
14. Lega S, Maschio M, Taddio A, Maggiore G, Ventura A. Giant cell hepatitis with Coombs-positive haemolytic anaemia: steroid sparing with high-dose intravenous immunoglobulin and cyclosporine. *Acta Paediatr* 2013;102:e137-9.  
[PUBMED](#) | [CROSSREF](#)
15. Marsalli G, Nastasio S, Sciveres M, Calvo PL, Ramenghi U, Gatti S, et al. Efficacy of intravenous immunoglobulin therapy in giant cell hepatitis with autoimmune hemolytic anemia: a multicenter study. *Clin Res Hepatol Gastroenterol* 2016;40:83-9.  
[PUBMED](#) | [CROSSREF](#)
16. Imgrueth M, Wagner HP, Pipczynski-Suter K, Beguin L, Wyss M, Pfister AM, et al. Plasma exchange: an important part of the therapeutic procedure in a small child with autoimmune hemolytic anemia. *Acta Paediatr Scand* 1986;75:1037-41.  
[PUBMED](#) | [CROSSREF](#)
17. Akyildiz M, Karasu Z, Arikan C, Nart D, Kilic M. Successful liver transplantation for giant cell hepatitis and Coombs-positive hemolytic anemia: a case report. *Pediatr Transplant* 2005;9:630-3.  
[PUBMED](#) | [CROSSREF](#)
18. Melendez HV, Rela M, Baker AJ, Ball C, Portmann B, Mieli-Vergani G, et al. Liver transplant for giant cell hepatitis with autoimmune haemolytic anaemia. *Arch Dis Child* 1997;77:249-51.  
[PUBMED](#) | [CROSSREF](#)
19. Ünal Ş, Kuşkonmaz B, Balamtekin N, Baysoy G, Aytaç Elmas S, Orhan D, et al. Autoimmune hemolytic anemia and giant cell hepatitis: Report of three infants. *Turk J Haematol* 2010;27:308-13.  
[PUBMED](#) | [CROSSREF](#)
20. Raj S, Stephen T, Debski RF. Giant cell hepatitis with autoimmune hemolytic anemia: a case report and review of pediatric literature. *Clin Pediatr (Phila)* 2011;50:357-9.  
[PUBMED](#) | [CROSSREF](#)
21. Bouguila J, Mabrouk S, Tilouche S, Bakir D, Trabelsi A, Hmila A, et al. Giant cell hepatitis with autoimmune hemolytic anemia in a nine month old infant. *World J Hepatol* 2013;5:226-9.  
[PUBMED](#) | [CROSSREF](#)
22. Perez-Atayde AR, Sirlin SM, Jonas M. Coombs-positive autoimmune hemolytic anemia and postinfantile giant cell hepatitis in children. *Pediatr Pathol* 1994;14:69-77.  
[PUBMED](#) | [CROSSREF](#)
23. Choulot JJ, Parent Y, Etcharry F, Saint-Martin J, Mensire A. [Giant cell hepatitis and autoimmune hemolytic anemia: efficacy of splenectomy on hemolysis]. *Arch Pediatr* 1996;3:789-91.  
[PUBMED](#) | [CROSSREF](#)
24. Hadzic N, Portmann B, Lewis I, Mieli-Vergani G. Coombs positive giant cell hepatitis--a new feature of Evans' syndrome. *Arch Dis Child* 1998;78:397-8.  
[PUBMED](#) | [CROSSREF](#)
25. Hartman C, Berkowitz D, Brik R, Arad A, Elhasid R, Shamir R. Giant cell hepatitis with autoimmune hemolytic anemia and hemophagocytosis. *J Pediatr Gastroenterol Nutr* 2001;32:330-4.  
[PUBMED](#) | [CROSSREF](#)