

## ORIGINAL ARTICLE

## Obesity and age-related alterations in the gene expression of zinc-transporter proteins in the human brain

RH Olesen<sup>1</sup>, TM Hyde<sup>2,3,4</sup>, JE Kleinman<sup>2</sup>, K Smidt<sup>1</sup>, J Rungby<sup>1,5</sup> and A Larsen<sup>1</sup>

The incidence of Alzheimer's disease (AD) is increasing. Major risk factors for AD are advancing age and diabetes. Lately, obesity has been associated with an increased risk of dementia. Obese and diabetic individuals are prone to decreased circulating levels of zinc, reducing the amount of zinc available for crucial intracellular processes. In the brain, zinc co-localizes with glutamate in synaptic vesicles, and modulates NMDA receptor activity. Intracellular zinc is involved in apoptosis and fluctuations in cytoplasmic Zn<sup>2+</sup> affect modulation of intracellular signaling. The *ZNT* and *ZIP* proteins participate in intracellular zinc homeostasis. Altered expression of zinc-regulatory proteins has been described in AD patients. Using microarray data from human frontal cortex (BrainCloud), this study investigates expression of the *SCLA30A* (*ZNT*) and *SCLA39A* (*ZIP*) families of genes in a Caucasian and African-American sample of 145 neurologically and psychiatrically normal individuals. Expression of *ZNT3* and *ZNT4* were significantly reduced with increasing age, whereas expression of *ZIP1*, *ZIP9* and *ZIP13* were significantly increased. Increasing body mass index (BMI) correlated with a significant reduction in *ZNT1* expression similar to what is seen in the early stages of AD. Increasing BMI also correlated with reduced expression of *ZNT6*. In conclusion, we found that the expression of genes that regulate intracellular zinc homeostasis in the human frontal cortex is altered with increasing age and affected by increasing BMI. With the increasing rates of obesity throughout the world, these findings warrant continuous scrutiny of the long-term consequences of obesity on brain function and the development of neurodegenerative diseases.

*Translational Psychiatry* (2016) 6, e838; doi:10.1038/tp.2016.83; published online 14 June 2016

## INTRODUCTION

Worldwide, populations are growing older.<sup>1</sup> A downside to increased longevity is the growing number of dementia cases, most commonly in the form of Alzheimer's disease (AD).<sup>2</sup> Today, 36 million people suffer from AD, with the expectation that this number will double within just 20 years<sup>3</sup> imposing a huge socioeconomic burden on societies.

Most cases of AD are sporadic, occurring late in life. The main risk factors of sporadic AD are advanced age ApoE genotype and diabetes.<sup>4,5</sup> Moreover, several studies find that obesity *per se* increases the risk of developing dementia.<sup>6–11</sup> There is a correlation between obesity in early and midlife and the subsequent development of AD in later years. Interestingly, obesity in the elderly might, in fact, be protective.<sup>7</sup> The link between neurodegeneration and obesity should attract concern from the health-care communities as there is a dramatic world-wide increase in average body weight in recent decades.<sup>12,13</sup>

The mechanisms linking metabolic dysfunction and obesity to neurodegenerative processes are unclear. A high incidence of cardiovascular disease, persistent low-grade inflammation and low levels of zinc in the blood are common in diabetic and obese individuals.<sup>14–18</sup> Both circulating and erythrocyte zinc levels are reduced<sup>16</sup> in obesity and there appears to be a direct link between zinc deficiency and obesity-related comorbidities such as insulin resistance.<sup>15,17,18</sup> Inflammation and atherosclerosis likely explain part of the epidemiological linkage between dementia, metabolic disease and obesity.<sup>19,20</sup> The increased risk of AD in diabetic

individuals, independent of body weight, is a subject of great interest.

As the human body does not sequester stores of zinc for later use, plasma zinc becomes the main pool of readily available zinc. Consequently, hypozincemia potentially could affect the zinc homeostasis throughout the body. The relationship between brain zinc levels and obesity are unknown. In AD brains, the literature is inconclusive and varies dependent on the anatomical localization of the sample. The areas rich in zinc include hippocampus and neocortex, especially layers III and IV, in which the so-called zinc-enriched neurons are found.<sup>21</sup> Moreover, zinc binds to amyloid plaques<sup>22</sup> and there have been reports of both high<sup>23,24</sup> and low<sup>25,26</sup> zinc content in AD brains compared with healthy brains.<sup>27</sup>

The functional relationships between zinc homeostasis, the amount of zinc present in the human brain and the onset of neurodegenerative processes require additional inquiry. In zinc-enriched neurons, the amount of free synaptically active zinc is controlled by the *ZNT3* transporter.<sup>28</sup> The *ZNT3* downregulation has been linked both to AD pathology and to normal aging of the brain.<sup>29,30</sup> Within synaptic vesicles, free zinc co-localizes with glutamate, and experimental studies indicate that the liberation of zinc from zinc-enriched neurons can modulate NMDA activity.<sup>31</sup> The ZnT3-knockout mice exhibit cognitive difficulties with increasing age<sup>30</sup> and moderate dietary zinc deficiency has been linked to cognitive deficits in humans.<sup>32</sup> The role of vesicular zinc in amyloid pathology has been tested by cross-breeding the Tg2576 AD mice with ZnT3KO mice.<sup>33</sup> This experiment confirmed

<sup>1</sup>Department of Biomedicine, Aarhus University, Aarhus, Denmark; <sup>2</sup>Lieber Institute for Brain Development, Johns Hopkins Medical Campus, Baltimore, MD, USA; <sup>3</sup>Department of Neurology, Johns Hopkins University School of Medicine, Baltimore, MD, USA; <sup>4</sup>Department of Psychiatry and Behavioral Sciences, Johns Hopkins University School of Medicine, Baltimore, MD, USA and <sup>5</sup>Center for Diabetes Research, Gentofte University Hospital, Hellerup, Denmark. Correspondence: Dr A Larsen, Department of Biomedicine, Aarhus University, Building 1242, Wilhelm Meyers Allé 4, 8000C Aarhus, Denmark.

E-mail: al@biomed.au.dk

Received 26 September 2015; revised 22 March 2016; accepted 31 March 2016

**Table 1.** Demographics of the adult (> 18 years of age) subjects of African-American and Caucasian descent obtained from the online BrainCloud data set.

BMI group	n	Race	Sex	Age	BMI
Underweight (< 18.5)	4	1 CAUC/3 AA	1 F/3 M	38.58 (20.2)	17.52 (1.2)
Normal (18.5–24.99)	39	20 CAUC/19 AA	17 F/22 M	39.91 (17.6)	22.2 (1.9)
Overweight (25–30)	41	21 CAUC/20 AA	5 F/36 M	44.2 (14.1)	27.42 (1.35)
Obese (> 30)	61	20 CAUC/41 AA	23 F/38 M	41.79 (13.9)	38.61 (9.5)
NA	3	NA	NA	NA	NA
Total	148	63 CAUC/85 AA	46 F/102 M	42.1 (15.1)	30.4 (9.78)

Abbreviations: AA, African American; BMI, body mass index; CAUC, Caucasian; F, female; M, male; NA, not available. Results are given as mean (s.d.).

a role for vesicular zinc in plaque formation as the resulting double-mutant mice displayed a significantly reduced plaque load. However, the mechanisms linking zinc, plaque formation and cognitive performance remains elusive. Dietary zinc restriction paradoxically leads to increased plaque formation in the APP/PS1 AD mouse.<sup>22</sup> Similarly, zinc supplementation reduced plaque formation in an AD model.<sup>34</sup> In that experiment, zinc supplementation also coincided with reduced cognitive performance. Others have shown that alterations in intracellular zinc might also disturb microtubular function and the formation of neurofibrillary tangles.<sup>35</sup>

Overall, most experiments with zinc supplementation seem to improve cognitive performance,<sup>36</sup> but the diversity in literature on this topic highlights the importance of a tightly balanced zinc regulation.

Alterations in intracellular zinc homeostasis may be produced by alterations in the *ZNT* or *ZIP* proteins. The *ZIP* proteins regulate zinc uptake from the extracellular environment as well as zinc release from intracellular stores. In contrast, the *ZNT* proteins re-direct zinc to the extracellular space and provide zinc for synaptic vesicles (*ZNT3*) and other organelles.

Altered gene or protein expression of several *ZNTs* has been associated with AD pathology. Although *ZNT3* expression is downregulated, other *ZNT* transporters are upregulated. In hippocampus, there are reports of increased protein levels of *ZNT4*, *ZNT6* and *ZNT1*.<sup>37,38</sup> The *ZNT1* transporter is the only member of the *SCLC30A* family actively transporting zinc from the cytoplasm to the extracellular compartment. Post-mortem analyses have shown that *ZNT1* expression is reduced in AD as well as in patients suffering from mild cognitive impairment.<sup>38</sup> On the other hand, patients with fulminant AD displayed an increased expression of *ZNT1*.<sup>38</sup>

On the basis of previous studies, we hypothesize that a reduced level of *ZNT1* in early-stage dementia constitutes a possible defense mechanism against systemic or local zinc deficiencies.

Utilizing cDNA microarray data from the prefrontal cortex of 145 neurologically and psychiatrically sound individuals, the relationship between body mass index (BMI), a standard measurement of weight/height relation and the *ZIP* and *ZNT* gene expression was examined. Furthermore, we investigated the relationship between the expression of these genes in the frontal cortex, gender or race, comparing African-American to Caucasian cohorts.

## MATERIALS AND METHODS

The data used in this study were obtained through the BrainCloud database (<http://braincloud.jhmi.edu/>) courtesy of the Lieber Institute of Brain Development. We used microarray data on post-mortem dorsolateral prefrontal cortex (corresponding to Broadman's areas number 9 and 46) from individuals without any psychiatric or neurological disease. The microarray expression data were obtained using the Illumina Oligoset (HEEBO7) chip, processed and expressed as previously described.<sup>39</sup> All tissue collection was performed with informed consent obtained from the

next of kin. All the data were subsequently anonymized in accordance with the rules and regulations of the National Institute of Health (using protocol 90-M-0142).

## BrainCloud demographics

BrainCloud contains non-neurologic/non-psychiatric controls up to 78 years of age. None of the subjects had any pathological findings consistent with AD, or other neurological diseases. In the present study, we excluded all individuals under the age of 18, four of Asian descent and five of Hispanic descent. Focusing on obesity *per se*, four individuals with known diabetes and three individuals with unknown BMI were excluded leaving 145 (63 Caucasians and 85 African Americans) subjects for the study. For a detailed description of the demographics of these subjects, please see Table 1.

## Genes

All genes of the *SLC30A/39A* families available in BrainCloud were analyzed in this study. Accordingly, all members of the *SLC30A* family (*ZNT1–ZNT10*) were analyzed, as well as most members of the *SCL39A* family with the exception of the *ZIP5*, *ZIP6* and *ZIP12* genes that are not included on the Illumina HEEBO chip.

## Statistics

Statistical analyses were done using R version 3.0.2, (R Foundation for Statistical Computing; <http://www.r-project.org/>). The data were considered normally distributed from examination of the quantile–quantile plot (QQ-plot), linear regression analysis was performed to assess the contributions of age on mRNA expression levels. The variation in mRNA expression of each gene was analyzed using BMI and age as continuous variables. The interaction between the age and BMI for each gene was compared using multiple regression analysis (Table 2). The comparison between African Americans and Caucasians, males and females, were performed using Student's *t*-test as when data were normally distributed, when not normal distributed Wilcoxon rank-sum test was used. Student's *t*-test is written as  $t(\text{degrees of freedom}) = , P = .$  Wilcoxon rank-sum is written as  $W = \text{rank sum}, P = 0.$  For all analyses, level of statistical significance was set at  $P \leq 0.05$ .

## RESULTS

Increasing BMI results in a decrease in the mRNA expression of *ZNT1* and *ZNT6*

Looking at BMI as a continuous variable revealed a statistically significant inverse correlation between *ZNT1* and *ZNT6*. For *ZNT1*:  $ZNT1 \text{ expression} = -0.007507 \times \text{BMI} + 0.550087$ ,  $F(1,143) = 9.912$ ,  $R^2 = 0.065$ ,  $P < 0.005$ . For *ZNT6*:  $ZNT6 \text{ expression} = -0.012496 \times \text{BMI} + 1.065286$ ,  $F(1,143) = 4.681$ ,  $R^2 = 0.0319$ ,  $P = 0.032$ . There is an inverse correlation between mRNA expression and increasing BMI (Figures 1a and b). The mRNA expression of the rest of the *SLC30* family, that is, *ZNT2*, *ZNT3*, *ZNT4*, *ZNT5*, *ZNT7*, *ZNT8*, *ZNT9* and *ZNT10* did not correlate with BMI. In the *SLC39A* family, increasing BMI did not correlate with the mRNA expression of the *ZIPs* examined, that is, *ZIP2–4*, *ZIP7–11* and *ZIP13–14*. We found interaction between BMI and age for the genes *ZIP1* and *ZIP11*.

In *ZIP1*, we found an interaction between age and BMI, and used this in the regression, giving us a significant relationship between *ZIP1*, age and BMI:  $ZIP1 = -0.0108695 \times \text{age} - 0.0213034 \times \text{BMI} + 0.0005721 \times (\text{Age} \times \text{BMI}) + 0.0451270$ ,  $F(3,141) = 4.98$ ,  $R^2 = 0.09581$ ,  $P = 0.0026$ ; giving us a combined decrease with age and BMI for *ZIP1*.

In *ZIP11*, we did not find any relationship with gene expression and age or BMI;  $ZIP11 = -0.0089901 \times \text{Age} - 0.0149509 \times \text{BMI} + 0.0004191 \times (\text{Age} \times \text{BMI}) + 0.4999$ ,  $F(3,141) = 2.508$ ,  $R^2 = 0.05065$ ,  $P = 0.06$ .

**Table 2.** Interaction between age and body mass index, in relation to analysis of each zinc-transporter gene

Gene name	P-value
<i>ZNT1</i>	0.46
<i>ZNT2</i>	0.732
<i>ZNT3</i>	0.48
<i>ZNT4</i>	0.07
<i>ZNT5</i>	0.49
<i>ZNT6</i>	0.772
<i>ZNT7</i>	0.34
<i>ZNT8</i>	0.837
<i>ZNT9</i>	0.2
<i>ZNT10</i>	0.7
<i>ZIP1</i>	0.0143 <sup>a</sup>
<i>ZIP2</i>	0.0728
<i>ZIP3</i>	0.202
<i>ZIP4</i>	0.689
<i>ZIP6</i>	0.366
<i>ZIP7</i>	0.872
<i>ZIP8</i>	0.679
<i>ZIP9</i>	0.656
<i>ZIP10</i>	0.116
<i>ZIP11</i>	0.0451 <sup>a</sup>
<i>ZIP13</i>	0.648
<i>ZIP14</i>	0.315

<sup>a</sup>Significant interaction. Evaluated using multiple regression.

The mRNA expression of *ZNT3* and *ZNT4* is gradually reduced throughout adulthood, whereas the expression of *ZIP9* and *ZIP13* gradually increases

Looking at each gene individually, a statistically significant reduction in the mRNA expression of *ZNT3* (Figure 2a;  $ZNT3$  expression =  $-0.005144 \times \text{Age} + 0.047144$ ,  $F(1,146) = 8.456$ ,  $R^2 = 0.05475$ ,  $P < 0.004$ ) and *ZNT4* (Figure 2b;  $ZNT4$  expression =  $-0.005535 \times \text{Age} - 0.123892$ ,  $F(1,146) = 4.384$ ,  $R^2 = 0.029$ ,  $P = 0.038$ ) was seen with increasing age throughout adult life (> 18 years), whereas the expression pattern of the remaining eight efflux transporters of the *SLC30A* family was unaffected. In the *SLC39A* family of zinc influx proteins, there was a statistically significant upregulation of *ZIP9* ( $ZIP9$  expression =  $0.003454 \times \text{Age} - 0.435929$ ,  $F(1,146) = 9.515$ ,  $R^2 = 0.06118$ ,  $P = 0.002$ ) and *ZIP13* ( $ZIP13$  expression =  $0.002995 \times \text{Age} - 0.236005$ ,  $F(1,146) = 5.313$ ,  $R^2 = 0.03511$ ,  $P = 0.023$ ) with increasing age (Figures 2c and d). Likewise, there were decreased levels of *ZIP10*, ( $ZIP10$  expression =  $-0.008570 \times \text{Age} + 0.964997$ ,  $F(1,146) = 4.632$ ,  $R^2 = 0.03075$ ,  $P = 0.033$ )

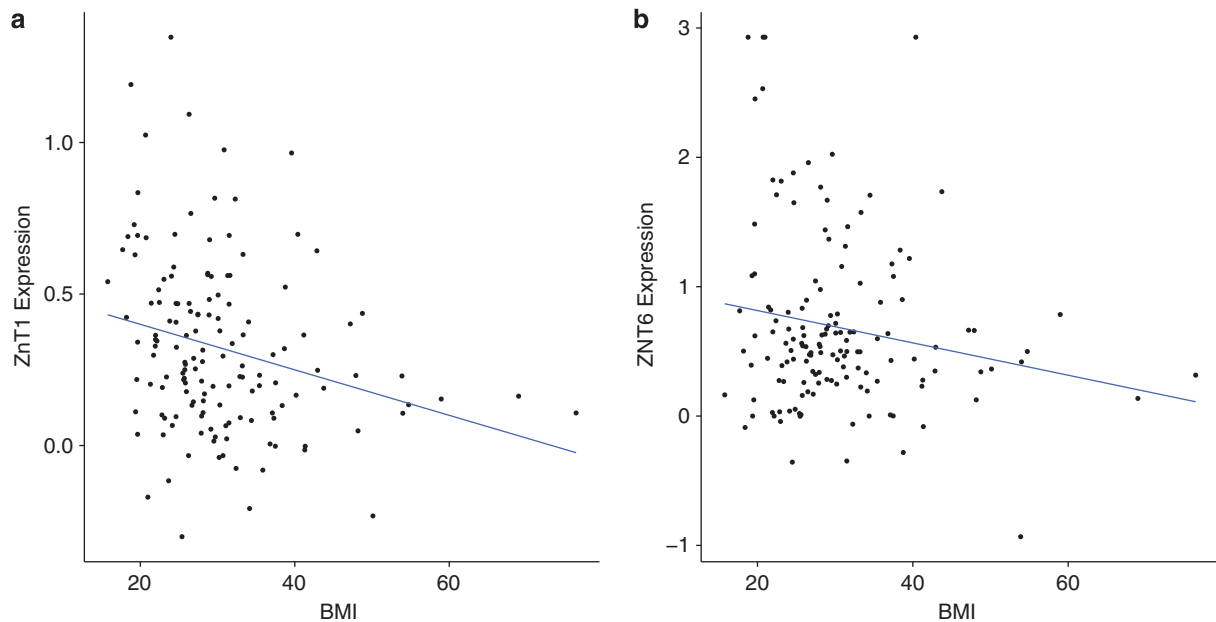
There was no relationship between age and the mRNA expression of *ZIP2-4*, *ZIP7-8* or *ZIP14*.

Smoking does not affect mRNA expression of zinc-regulatory proteins of the *SLC30A* (*ZNT*) and *SLC39A* (*ZIP*) families

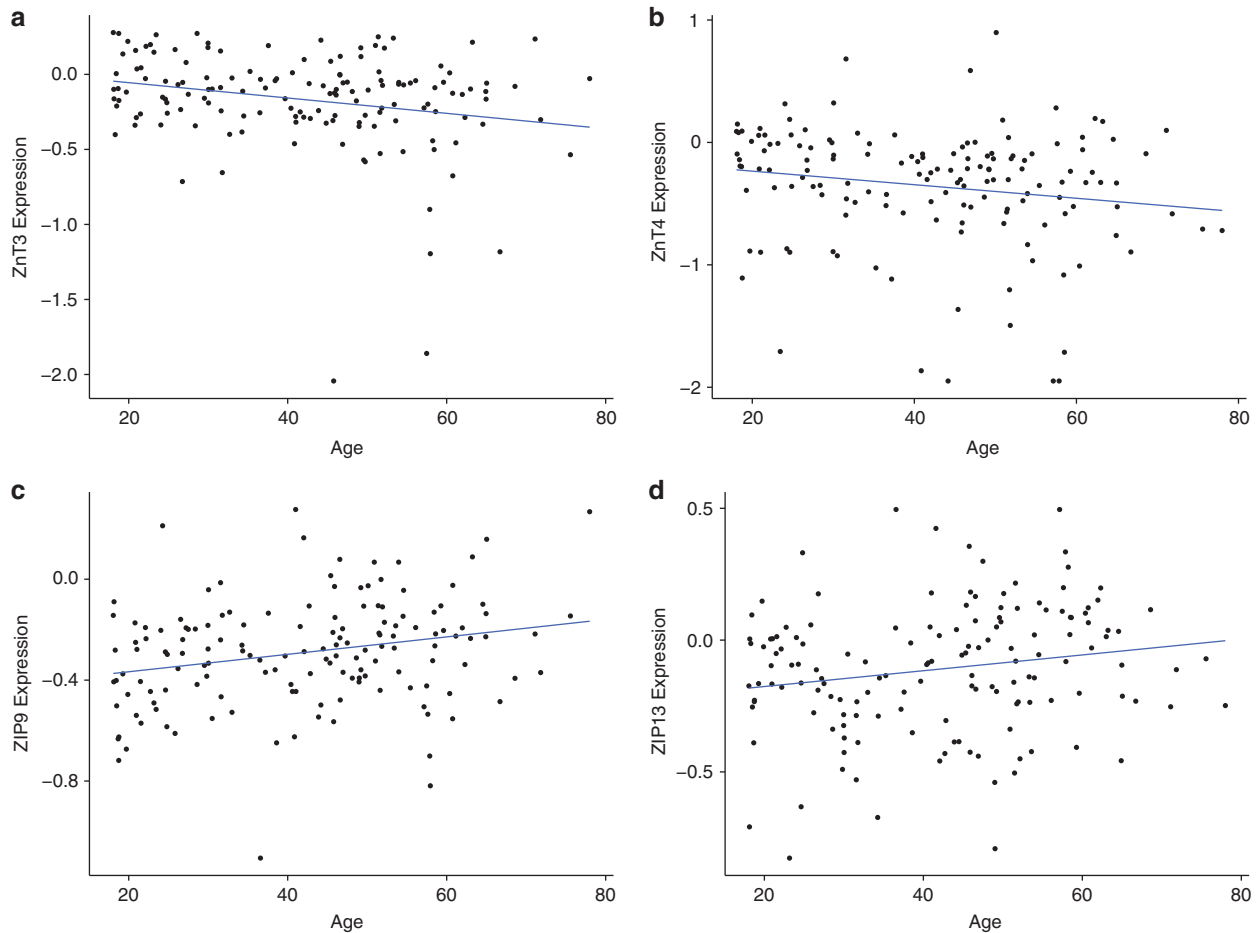
The relationship between smoking status at the time of death on the gene expression of the *SLC30A* (*ZNT*) family and most of the *SLC39A* family, that is, *ZIP1-4*, *ZIP7-11* and *ZIP13-14* was examined without any significant findings on the mRNA expression of either class of zinc-regulatory proteins.

Analyses of biological variations in the mRNA expression of zinc-regulatory proteins revealed both sex differences and differences between African Americans and Caucasians

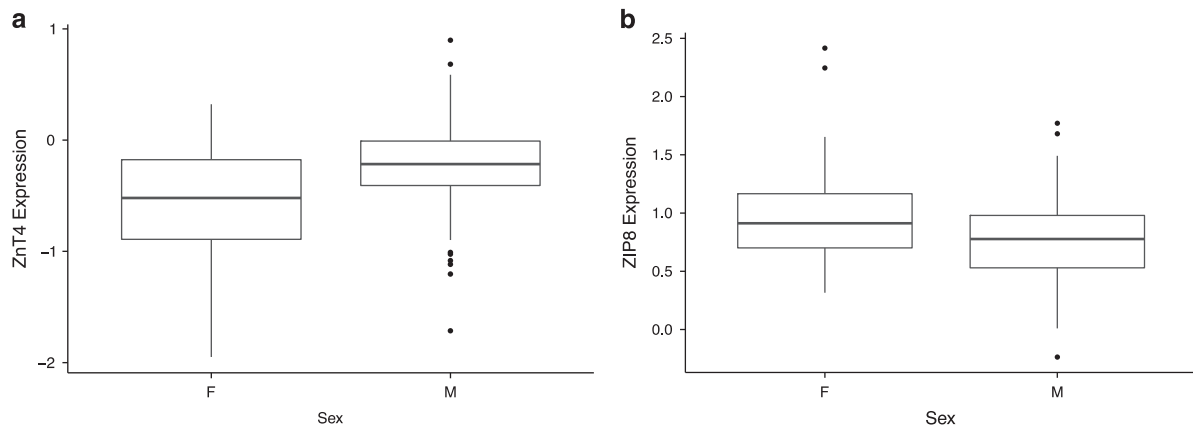
We found that men exhibited a statistically, significantly higher expression of *ZNT4* ( $t(62.446) = -3.7279$ ,  $P < 0.0004$ ; Figure 3a) than women in this study as well as statistically, significantly lower expression of *ZIP1* ( $t(65.14) = 2.9317$ ,  $P = 0.01241$ ) and *ZIP8* ( $t(68.837) = -2.9317$ ,  $P = 0.009$ ; Figure 3b). Comparing the gene expression pattern of zinc-regulatory proteins between racial



**Figure 1.** (a and b) On the x axis, BMI (kg/m<sup>2</sup>) and on the y axis, there are mRNA expressions of *ZNT1* ( $P = 0.002$ ) (a), *ZNT6* ( $P = 0.03$ ) (b). Expression is expressed as  $\log_2$  of the ratio of sample signal to the reference signal Each dot represents one individual. Line represents best-fitted line using regression. BMI, body mass index.



**Figure 2.** (a–d) On the x axis, Age (years) and on the y axis, there are mRNA expressions of *ZNT3* ( $P < 0.005$ ) (a) and *ZNT4* ( $P = 0.038$ ) (b), *ZIP9* ( $P = 0.0024$ ) (c) and *ZIP13* ( $P = 0.0226$ ) (d). Expression levels are measured as  $\log_2$  of the ratio of sample signal to the reference signal. Each dot represents one individual. Line represents best-fitted line using regression.

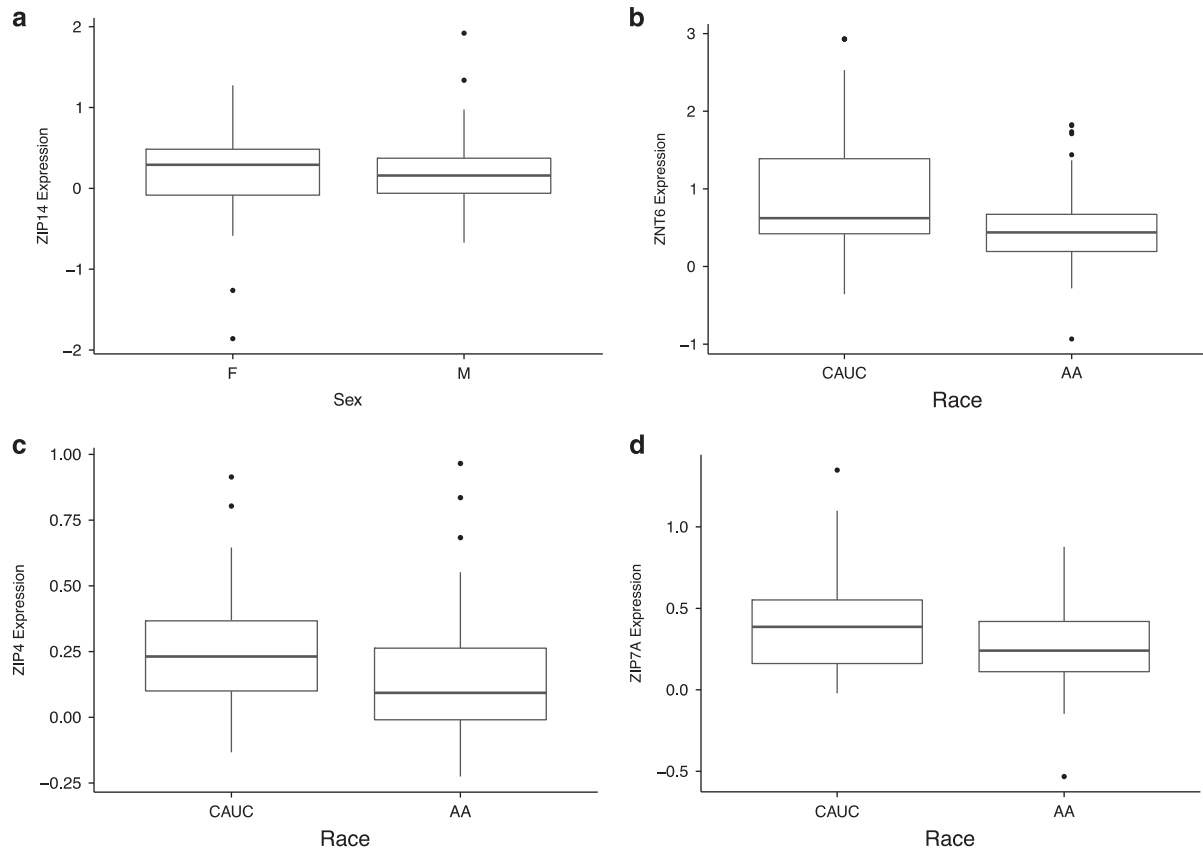


**Figure 3.** (a and b) On the y axis, mRNA expression of ZnT4 (a) and ZIP8 (b). F, female; M, male. For each group, bold line represents median; box is upper and lower quartile; and whiskers are upper and lower extreme. Expression levels are measured as  $\log_2$  of the ratio of sample signal to the reference signal.

groups, we found that African Americans displayed a statistically, significantly higher expression of *ZIP14* ( $t(137.882) = -3.4778$ ,  $P = 0.0007$ ; Figure 4a), as well as a statistically significant lower expression of three members of the *SLC30A* family, that is, *ZNT6* ( $t(92.96) = 3.7504$ ,  $P = 0.003$ ; Figure 4b), and two of the *SLC39A* genes, that is, *ZIP4* ( $W = 3511$ ,  $P = 0.001$ ) and *ZIP7* ( $t(113.358) = 3.1329$ ,  $P = 0.0022$ ; Figures 4c and d).

## DISCUSSION

The analysis of the mRNA expression of the entire *SLC30A* family as well as 11 of the 14 *SLC39A* genes in the present study provides new insight into the intracellular zinc regulation in the human brain. Our analyses confirm a previous study<sup>30</sup> that *ZNT3* downregulation is indeed a feature of human aging, accompanied



**Figure 4.** (a-d) On the y axis, mRNA expression, *ZIP14* (a), *ZNT6* (b), *ZIP4* (c) and *ZIP7A* (d). CAUC, Caucasian; AA, African American. For each group, bold line represents median; box is upper and lower quartile; and whiskers are upper and lower extreme. Expression levels are measured as  $\log_2$  of the ratio of sample signal to the reference signal.

by the novel finding of a downregulation of *ZNT4* and upregulation of *ZIP1*, *ZIP9* and *ZIP13*. Furthermore, we identified an association between increased body weight and altered zinc homeostasis in the brain as increasing BMI correlated with statistically significant decreases in the expression of *ZNT1* and *ZNT6*. Interestingly, each of these zinc transporters previously has been linked to the development of AD.<sup>29,30,37,38,40</sup>

Low plasma zinc in association with obesity is well described.<sup>14-18</sup> There is scant information about the zinc content of the human brain in relationship to obesity. Genetically obese mice show unaltered or slightly reduced zinc concentrations in the brain.<sup>41</sup> Previous reports on the *ob/ob* mice also found that, compared with lean mice, these obese mice had an increased intestinal uptake of zinc. Such increased zinc uptake occurred irrespective of the amount of food ingested, indicating that in this form of obesity, there is an altered intestinal absorption of zinc.<sup>41,42</sup> It is unclear whether this increased uptake of zinc has a causative role in this form of obesity, or is an epiphenomenon. A later study by Chen *et al.*<sup>43</sup> did, however, find that zinc supplementation significantly increased body fat accumulation in both the *ob/ob* mice and the obese ICR mice. These findings suggest that increased uptake of zinc could have a causative role in obesity. Paradoxically, the obese mice displayed reduced zinc content in most of the body—that is, the skin, muscle and bone—despite the increased zinc uptake. On the other hand, the amount of zinc in liver, adipose tissue and intestines increased in the obese animals, indicating that obesity alters the zinc distribution in the body.<sup>41,44</sup> In this respect, zinc sequestration in the enlarged liver could have a prominent role.<sup>44</sup>

Plasma zinc constitutes the main readily available source in the body. Hence, obesity-induced hypozincemia will likely result in

reduced zinc availability for the brain. Several studies<sup>14-16</sup> describe a reduced level of circulating zinc in obese individuals from which affect both total zinc levels and mean erythrocyte zinc levels. In morbidly obese eligible for bariatric surgery, as many as 73.9% were zinc deficient.<sup>14</sup> Zinc deficiency correlates with elements of the metabolic syndrome such as insulin secretion,<sup>15,17,18</sup> as well as with diabetes as such in which an increased loss of zinc in the urine is also seen.<sup>18</sup> In general, an increased plasma volume could contribute to this pattern, as could reduce dietary zinc intake, which have been reported among obese individuals.<sup>17</sup> As recently reviewed by Takeda *et al.*,<sup>45</sup> dietary zinc deficiency rarely results in measurable reductions in brain zinc concentrations. Physiologically, on the other hand, the sensitivity of the body to zinc deficiency is reflected by impaired learning and increased production of glucocorticosteroids as seen in several animal studies.<sup>32,46-48</sup> As described by Stanstead,<sup>32</sup> several neuropsychological studies indicate that marginal zinc deficiency might affect perception, attention or psychomotor skills in humans and that this can be corrected by zinc alone or in combination with other micronutrients. In addition, a recent study found that zinc supplementation reduced symptoms of depression as registered by the Hamilton Depression Rating Scale and increased plasma-BDNF levels in obese and overweight depressed humans.<sup>49</sup> Similarly, several studies link zinc supplementation to increased cortical, cerebral and hippocampal levels of BDNF in mice.<sup>50-52</sup>

Obesity in midlife is associated with an increased risk of AD.<sup>6-11</sup> In some asymptomatic individuals in their late 40s and early 50s, neuropathological examination has discerned early signs of AD pathology<sup>53</sup> suggesting that the pathological changes associated with AD may begin far earlier than commonly anticipated. Recent



works of Lowell *et al.*<sup>38</sup> have studied alterations in intracellular zinc regulation in relation to the progression from mild cognitive impairment to fulminant AD. Although some variation with anatomical location within the brain was seen, this study indicated that *ZNT1* protein expression is increased in the pre-clinical and early stages of AD, and subsequently decreases in the late stages.<sup>38</sup> These findings suggest that dysregulation of intracellular zinc signaling participates in AD development, but in a complex fashion. In addition, a recent study has shown that *ZNT1* binds directly to the GluN2A subunit of the NMDA receptor,<sup>54</sup> suggesting that alterations in the expression of this specific zinc transporter may have functional consequences not directly related to zinc *per se*. The exact role of *ZNT1* in synaptic activity remains to be elucidated, but this *ZNT1*–GluN2A complex formation appears to be dynamic in nature as the tendency towards such complex formation varies with synaptic activity.

In addition to alterations in *ZNT1* expression, *ZNT4* and *ZNT6* protein levels are upregulated in late AD.<sup>37</sup> The *ZNT4* and *ZNT6* proteins transport zinc into the lysosomal and trans-golgi compartments and it has been hypothesized that an upregulation of *ZNT4* and *ZNT6* would allow excess zinc to be removed from the cytoplasm before doing any harm.<sup>55</sup> On the other hand, upregulation of *ZNT4* and *ZNT6* might also reflect the relative increase in glial cells in late AD. In this study, we found that *ZNT5* and *ZNT6* are significantly downregulated with increasing BMI, suggesting that obesity could potentially affect tightly regulated zinc homeostasis in the brain tissue.

Investigating zinc dyshomeostasis in AD pathology, both increased and reduced levels of cytoplasmatic zinc have been implicated. Intracellular zinc depletion destabilizes microtubules, hereby starting a cascade of tau release, hyper-phosphorylation and formation of neurofibrillary tangles.<sup>34</sup> Intracellular zinc excess, occurring as a consequence of Amyloid beta aggregation and reactive oxygen species generation, liberates zinc from metallothionein and may affect mitochondrial function and induce apoptosis.<sup>56–59</sup> One way to reconcile these seemingly contradictory findings is to suggest that intracellular zinc must be tightly regulated to avoid adverse molecular consequences.

Other studies have implicated zinc transporters *ZNT3* and *ZNT10* in AD.<sup>29,30,40</sup> Here we find that their expression varies with age and BMI, respectively. An age-related *ZNT3* downregulation has been reported in an older human population ( $n = 24$ )—age 49–91 years—as well as in aging rodents.<sup>30</sup> The *ZNT3* protein is responsible for the accumulation of zinc in synaptic vesicles and could be involved in memory and learning.<sup>28</sup> A reduction in *ZNT3* expression has been found in the brains of AD patients. Moreover, the role of *ZNT3* in learning and memory is suggested by age-related cognitive loss in elderly *Znt3* knockout mice.<sup>30</sup> The investigation of *Znt3* gene and protein expression in the SAMP10 age-accelerated mice also found a link between aging, *ZNT3* downregulation and reduced zinc content in the brain.<sup>60</sup> *ZNT3* gene downregulation increases senescence in vascular smooth muscle cells and interestingly, *ZNT10* has the same effect.<sup>61</sup> *ZNT10* was recently identified in brain tissue and a decrease in *ZNT10* expression has been seen in AD brains.<sup>40</sup> Despite this close relationship between *ZNT3* and *ZNT10*, we do not see an age-related decrease in *ZNT10* expression in our study population.

The role of the *SLC39A* family in aging has not previously been investigated. Here we find that three members of the *ZIP* family, that is, *ZIP1*, *ZIP9* and *ZIP13* are upregulated with increasing age. Of these, *ZIP1* is believed to be ubiquitously expressed in the body.<sup>62</sup> *ZIP1* is highly expressed in the hippocampus and in murine studies, and knocking out *ZIP1* attenuated seizure-induced neuronal death.<sup>63</sup> *ZIP1* expression can be upregulated by interleukin-6 and at least in the prostate also is increased by testosterone.<sup>62</sup> Dietary zinc deficiency mainly affects the subcellular location of *ZIP1*

leading to an increased presence in the plasma membrane,<sup>64</sup> highlighting the need for further studies of the protein levels of *ZIP1* in the aging brain. Little is known of the function of *ZIP9* and *ZIP13* in the brain. Recent studies do, however, link *ZIP9*-mediated zinc signaling to Akt/Erk regulation<sup>65</sup> and steroid receptor<sup>66</sup> function in the other tissues. *Zip 13* has previously been described as important in human retino-pigmental cells,<sup>67</sup> although this transporter may, in fact, be important for the transport of other trace metals such as iron as well.<sup>68</sup>

## CONCLUSION

The present study shows that both increasing age and increasing BMI are associated with alterations in the expression of genes mediating intracellular zinc homeostasis in the human brain. Individual members of the *ZNT1* and *ZIP* gene families have differing relationships with increasing age, as mRNA expression of *ZNT3* and *ZNT4* is downregulated, whereas the expression of *ZIP3*, *ZIP9* and *ZIP13* increases. Increasing BMI levels are associated with reduced expression of *ZNT1* and *ZNT6*, which previously have all been implicated in AD pathology. In light of the increasing rates of obesity and AD throughout the world, more studies on the physiological consequences of zinc dyshomeostasis and the combined role of *ZIP* and *ZNT* proteins are warranted. In this respect, modern techniques such as next-generation sequencing could give us further knowledge on the role of zinc transporters in AD and obesity.

## CONFLICT OF INTEREST

The authors declare no conflict of interest.

## ACKNOWLEDGMENTS

We thank the families who donated tissue to this research. We are grateful for the vision and generosity of the Lieber and Maltz families who helped make this work possible and we thank The A.P. Møller Foundation for the Advancement of Medical Science and the Lundbeck Foundation, for their contribution to this project. We also thank Amy Deep-Soboslay and Lewellyn B Bigelow, for their contributions in the diagnostic review of the subjects included in this study. We also thank our colleagues Michael Gejl and Tianzhang Ye for valuable scientific discussions.

## REFERENCES

- WHO. On Ageing and Life Course. Available at <http://www.who.int/ageing/about/facts/en/index.html>. Accessed on 20 August 2013.
- Alzheimer's Association. 2013 Alzheimer's disease facts and figures. *Alzheimers Dement* 2013; **9**: 208–245.
- WHO. Dementia: A Public Health Priority, 2012; ISBN: 978 92 4 156445 8.
- Matsuzaki T, Sasaki K, Tanizaki Y, Hata J, Fujimi K, Matsui Y *et al*. Insulin resistance is associated with the pathology of Alzheimer disease: the Hisayama Study. *Neurology* 2010; **75**: 764–770.
- Panza F, Frisardi V, Capurso C, Imbimbo BP, Vendemiale G, Santamato A *et al*. Metabolic syndrome and cognitive impairment: current epidemiology and possible underlying mechanisms. *J Alzheimers Dis* 2010; **21**: 691–724.
- Wotton CJ, Goldacre MJ. Age at obesity and association with subsequent dementia: record linkage study. *Postgrad Med J* 2014; **90**: 547–551.
- Tolppanen AM, Ngandu T, Kareholt I, Laatikainen T, Rusanen M, Soininen H *et al*. Midlife and late-life body mass index and late-life dementia: results from a prospective population-based cohort. *J Alzheimers Dis* 2014; **38**: 201–209.
- Xu WL, Atti AR, Gatz M, Pedersen NL, Johansson B, Fratiglioni L. Midlife overweight and obesity increase late-life dementia risk: a population-based twin study. *Neurology* 2011; **76**: 1568–1574.
- Gunstad J, Paul RH, Cohen RA, Tate DF, Gordon E. Obesity is associated with memory deficits in young and middle-aged adults. *Eat Weight Disord* 2006; **11**: e15–e19.
- Gunstad J, Paul RH, Cohen RA, Tate DF, Spitznagel MB, Gordon E. Elevated body mass index is associated with executive dysfunction in otherwise healthy adults. *Compr Psychiatry* 2007; **48**: 57–61.

- 11 Whitmer RA, Gunderson EP, Barrett-Connor E, Quesenberry CP, Yaffe K. Obesity in middle age and future risk of dementia: a 27 year longitudinal population based study. *BMJ* 2005; **330**: 1360.
- 12 WHO. WHO Factsheet. Available at <http://www.who.int/mediacentre/factsheets/fs311/en/>. Accessed on 20 August 2015.
- 13 Finucane MM, Stevens GA, Cowan MJ, Danaei G, Lin JK, Paciorek CJ *et al*. National, regional, and global trends in body-mass index since 1980: systematic analysis of health examination surveys and epidemiological studies with 960 country-years and 9.1 million participants. *Lancet* **377**: 557–567.
- 14 de Luis DA, Pacheco D, Izaola O, Terroba MC, Cuellar L, Cabezas G. Micronutrient status in morbidly obese women before bariatric surgery. *Surg Obes Relat Dis* 2013; **9**: 323–327.
- 15 Suliburska J, Cofta S, Gajewska E, Kalmus G, Sobieska M, Samborski W *et al*. The evaluation of selected serum mineral concentrations and their association with insulin resistance in obese adolescents. *Eur Rev Med Pharmacol Sci* 2013; **17**: 2396–2400.
- 16 Garcia OP, Long KZ, Rosado JL. Impact of micronutrient deficiencies on obesity. *Nutr Rev* 2009; **67**: 559–572.
- 17 Costarelli L, Muti E, Malavolta M, Cipriano C, Giacconi R, Tesesi S *et al*. Distinctive modulation of inflammatory and metabolic parameters in relation to zinc nutritional status in adult overweight/obese subjects. *J Nutr Biochem* 2010; **21**: 432–437.
- 18 Beletate V, El Dib R, Atallah A. Zinc supplementation for the prevention of type 2 diabetes mellitus. *Cochrane Database Syst Rev* 2007.
- 19 Luchsinger JA, Tang MX, Shea S, Mayeux R. Hyperinsulinemia and risk of Alzheimer disease. *Neurology* 2004; **63**: 1187–1192.
- 20 Xu WL, von Strauss E, Qiu CX, Winblad B, Fratiglioni L. Uncontrolled diabetes increases the risk of Alzheimer's disease: a population-based cohort study. *Diabetologia* 2009; **52**: 1031–1039.
- 21 Frederickson CJ, Suh SW, Silva D, Frederickson CJ, Thompson RB. Importance of zinc in the central nervous system: the zinc-containing neuron. *J Nutr* 2000; **130**: 1471S–1483S.
- 22 Stoltenberg M, Bush AI, Bach G, Smidt K, Larsen A, Rungby J *et al*. Amyloid plaques arise from zinc-enriched cortical layers in APP/PS1 transgenic mice and are paradoxically enlarged with dietary zinc deficiency. *Neuroscience* 2007; **150**: 357–369.
- 23 Danscher G, Jensen KB, Frederickson CJ, Kemp K, Andreassen A, Juhl S *et al*. Increased amount of zinc in the hippocampus and amygdala of Alzheimer's diseased brains: a proton-induced X-ray emission spectroscopic analysis of cryostat sections from autopsy material. *J Neurosci Methods* 1997; **76**: 53–59.
- 24 Religa D, Strozzyk D, Cherny RA, Volitakis I, Haroutunian V, Winblad B *et al*. Elevated cortical zinc in Alzheimer disease. *Neurology* 2006; **67**: 69–75.
- 25 Wenstrup D, Ehmann WD, Markesbery WR. Trace element imbalances in isolated subcellular fractions of Alzheimer's disease brains. *Brain Res* 1990; **533**: 125–131.
- 26 Panayi AE, Spyrou NM, Iversen BS, White MA, Part P. Determination of cadmium and zinc in Alzheimer's brain tissue using inductively coupled plasma mass spectrometry. *J Neurol Sci* 2002; **195**: 1–10.
- 27 Lyubartseva G, Lovell MA. A potential role for zinc alterations in the pathogenesis of Alzheimer's disease. *Biofactors* 2012; **38**: 98–106.
- 28 Linkous DH, Flinn JM, Koh JY, Lanzirotti A, Bertsch PM, Jones BF *et al*. Evidence that the ZNT3 protein controls the total amount of elemental zinc in synaptic vesicles. *J Histochem Cytochem* 2008; **56**: 3–6.
- 29 Beyer N, Coulson DT, Heggarty S, Ravid R, Hellems J, Irvine GB *et al*. Zinc transporter mRNA levels in Alzheimer's disease postmortem brain. *J Alzheimers Dis* 2012; **29**: 863–873.
- 30 Adlard PA, Parncutt JM, Finkelstein DI, Bush AI. Cognitive loss in zinc transporter-3 knock-out mice: a phenocopy for the synaptic and memory deficits of Alzheimer's disease? *J Neurosci* 2010; **30**: 1631–1636.
- 31 Vergnano AM, Rebola N, Savtchenko LP, Pinheiro PS, Casado M, Kieffer BL *et al*. Zinc dynamics and action at excitatory synapses. *Neuron* 2014; **82**: 1101–1114.
- 32 Sandstead HH. Subclinical zinc deficiency impairs human brain function. *J Trace Elem Med Biol* 2012; **26**: 70–73.
- 33 Lee JY, Cole TB, Palmiter RD, Suh SW, Koh JY. Contribution by synaptic zinc to the gender-disparate plaque formation in human Swedish mutant APP transgenic mice. *Proc Natl Acad Sci USA* 2002; **99**: 7705–7710.
- 34 Linkous DH, Adlard PA, Wanschura PB, Conko KM, Flinn JM. The effects of enhanced zinc on spatial memory and plaque formation in transgenic mice. *J Alzheimers Dis* 2009; **18**: 565–579.
- 35 Craddock TJ, Tuszynski JA, Chopra D, Casey N, Goldstein LE, Hameroff SR *et al*. The zinc dyshomeostasis hypothesis of Alzheimer's disease. *PLoS One* 2012; **7**: e33552.
- 36 Szewczyk B. Zinc homeostasis and neurodegenerative disorders. *Front Aging Neurosci* 2013; **5**: 33.
- 37 Smith JL, Xiong S, Markesbery WR, Lovell MA. Altered expression of zinc transporters-4 and -6 in mild cognitive impairment, early and late Alzheimer's disease brain. *Neuroscience* 2006; **140**: 879–888.
- 38 Lovell MA, Smith JL, Xiong S, Markesbery WR. Alterations in zinc transporter protein-1 (ZnT-1) in the brain of subjects with mild cognitive impairment, early, and late-stage Alzheimer's disease. *Neurotox Res* 2005; **7**: 265–271.
- 39 Colantuoni C, Lipska BK, Ye T, Hyde TM, Tao R, Leek JT *et al*. Temporal dynamics and genetic control of transcription in the human prefrontal cortex. *Nature* 2011; **478**: 519–523.
- 40 Bosomworth HJ, Adlard PA, Ford D, Valentine RA. Altered expression of ZnT10 in Alzheimer's disease brain. *PLoS One* 2013; **8**: e65475.
- 41 Kennedy ML, Failla ML. Zinc metabolism in genetically obese (ob/ob) mice. *J Nutr* 1987; **117**: 886–893.
- 42 Fernandez-Lopez JA, Esteve M, Rafecas I, Remesar X, Alemany M. Management of dietary essential metals (iron, copper, zinc, chromium and manganese) by Wistar and Zucker obese rats fed a self-selected high-energy diet. *Biometals* 1994; **7**: 117–129.
- 43 Chen MD, Lin PY, Cheng V, Lin WH. Zinc supplementation aggravates body fat accumulation in genetically obese mice and dietary-obese mice. *Biol Trace Elem Res* 1996; **52**: 125–132.
- 44 Kennedy ML, Failla ML, Smith JC Jr. Influence of genetic obesity on tissue concentrations of zinc, copper, manganese and iron in mice. *J Nutr* 1986; **116**: 1432–1441.
- 45 Takeda A, Nakamura M, Fujii H, Tamano H. Synaptic Zn(2+) homeostasis and its significance. *Metallomics* 2013; **5**: 417–423.
- 46 Takeda A. Zinc signaling in the hippocampus and its relation to pathogenesis of depression. *Mol Neurobiol* 2011; **44**: 166–174.
- 47 Takeda A, Tamano H. Insight into zinc signaling from dietary zinc deficiency. *Brain Res Rev* 2009; **62**: 33–44.
- 48 Massaro TF, Mohs M, Fosmire G. Effects of moderate zinc deficiency on cognitive performance in young adult rats. *Physiol Behav* 1982; **29**: 117–121.
- 49 Solati Z, Jazayeri S, Tehrani-Doost M, Mahmoodianfard S, Gohari MR. Zinc monotherapy increases serum brain-derived neurotrophic factor (BDNF) levels and decreases depressive symptoms in overweight or obese subjects: a double-blind, randomized, placebo-controlled trial. *Nutr Neurosci* 2015; **18**: 162–168.
- 50 Nowak G, Legutko B, Szewczyk B, Papp M, Sanak M, Pilc A. Zinc treatment induces cortical brain-derived neurotrophic factor gene expression. *Eur J Pharmacol* 2004; **492**: 57–59.
- 51 Franco JL, Posser T, Brocardo PS, Trevisan R, Uliano-Silva M, Gabilan NH *et al*. Involvement of glutathione, ERK1/2 phosphorylation and BDNF expression in the antidepressant-like effect of zinc in rats. *Behav Brain Res* 2008; **188**: 316–323.
- 52 Sowa-Kucma M, Legutko B, Szewczyk B, Novak K, Znojek P, Poleszak E *et al*. Antidepressant-like activity of zinc: further behavioral and molecular evidence. *J Neural Transm* 2008; **115**: 1621–1628.
- 53 Braak H, Braak E. Frequency of stages of Alzheimer-related lesions in different age categories. *Neurobiol Aging* 1997; **18**: 351–357.
- 54 Mellone M, Pelucchi S, Alberti L, Genazzani AA, Di Luca M, Gardoni F. Zinc transporter-1: a novel NMDA receptor-binding protein at the postsynaptic density. *J Neurochem* 2015; **132**: 159–168.
- 55 Sobieszczanska M, Tubek S, Szygula R, Bunio A. Is the zinc neuroprotective effect caused by prevention of intracellular zinc accumulation? *Adv Clin Exp Med* 2012; **21**: 245–248.
- 56 Capasso M, Jeng JM, Malavolta M, Mocchegiani E, Sensi SL. Zinc dyshomeostasis: a key modulator of neuronal injury. *J Alzheimers Dis* 2005; **8**: 93–108, discussion 209–215.
- 57 Untergasser G, Rumpold H, Plas E, Witkowski M, Pfister G, Berger P. High levels of zinc ions induce loss of mitochondrial potential and degradation of antiapoptotic Bcl-2 protein in *in vitro* cultivated human prostate epithelial cells. *Biochem Biophys Res Commun* 2000; **279**: 607–614.
- 58 Sensi SL, Rapposelli IG, Frazzini V, Mascetra N. Altered oxidant-mediated intraneuronal zinc mobilization in a triple transgenic mouse model of Alzheimer's disease. *Exp Gerontol* 2008; **43**: 488–492.
- 59 Hamatake M, Iguchi K, Hirano K, Ishida R. Zinc induces mixed types of cell death, necrosis, and apoptosis, in molt-4 cells. *J Biochem* 2000; **128**: 933–939.
- 60 Saito T, Takahashi K, Nakagawa N, Hosokawa T, Kurasaki M, Yamanoshita O *et al*. Deficiencies of hippocampal Zn and ZnT3 accelerate brain aging of Rat. *Biochem Biophys Res Commun* 2000; **279**: 505–511.
- 61 Patrushev N, Seidel-Rogol B, Salazar G. Angiotensin II requires zinc and down-regulation of the zinc transporters ZnT3 and ZnT10 to induce senescence of vascular smooth muscle cells. *PLoS One* 2012; **7**: e33211.
- 62 Jeong J, Eide DJ. The SLC39 family of zinc transporters. *Mol Aspects Med* 2013; **34**: 612–619.
- 63 Qian J, Xu K, Yoo J, Chen TT, Andrews G, Noebels JL. Knockout of Zn transporters Zip-1 and Zip-3 attenuates seizure-induced CA1 neurodegeneration. *J Neurosci* 2011; **31**: 97–104.

- 64 Wang F, Dufner-Beattie J, Kim BE, Petris MJ, Andrews G, Eide DJ. Zinc-stimulated endocytosis controls activity of the mouse ZIP1 and ZIP3 zinc uptake transporters. *J Biol Chem* 2004; **279**: 24631–24639.
- 65 Berg AH, Rice CD, Rahman MS, Dong J, Thomas P. Identification and characterization of membrane androgen receptors in the ZIP9 zinc transporter subfamily: I. Discovery in female atlantic croaker and evidence ZIP9 mediates testosterone-induced apoptosis of ovarian follicle cells. *Endocrinology* 2014; **155**: 4237–4249.
- 66 Taniguchi M, Fukunaka A, Hagihara M, Watanabe K, Kamino S, Kambe T *et al*. Essential role of the zinc transporter ZIP9/SLC39A9 in regulating the activations of Akt and Erk in B-cell receptor signaling pathway in DT40 cells. *PLoS One* 2013; **8**: e58022.
- 67 Leung KW, Liu M, Xu X, Seiler MJ, Barnstable CJ, Tombran-Tink J. Expression of ZnT and ZIP zinc transporters in the human RPE and their regulation by neurotrophic factors. *Invest Ophthalmol Vis Sci* 2008; **49**: 1221–1231.
- 68 Kowalska K, Bizon A, Zalewska M, Milnerowicz H. The influence of biological and environmental factors on metallothionein concentration in the blood. *J Trace Elem Med Biol* 2015; **29**: 99–103.



This work is licensed under a Creative Commons Attribution 4.0 International License. The images or other third party material in this article are included in the article's Creative Commons license, unless indicated otherwise in the credit line; if the material is not included under the Creative Commons license, users will need to obtain permission from the license holder to reproduce the material. To view a copy of this license, visit <http://creativecommons.org/licenses/by/4.0/>

© The Author(s) 2016