

Modulation of SOD1 Subcellular Localization by Transfection with Wild- or Mutant-type SOD1 in Primary Neuron and Astrocyte Cultures from ALS Mice

Do-Yeon Lee^{1#}, Gye Sun Jeon^{1,2#}, Yu-mi Shim¹, Seung-Yong Seong³,
Kwang-Woo Lee¹ and Jung-Joon Sung^{1*}

¹Department of Neurology, ²Biomedical Research Institute, Seoul National University Hospital College of Medicine, ³Wide River Institute of Immunology, Department of Microbiology and Immunology, Department of Biomedical Sciences, Seoul National University College of Medicine, Seoul 03080, Korea

Amyotrophic lateral sclerosis (ALS) is a fatal neurological disorder characterized by selective degeneration of motor neurons. Mutant superoxide dismutase 1 (SOD1) is often found as aggregates in the cytoplasm in motor neurons of various mouse models and familial ALS patients. The interplay between motor neurons and astrocytes is crucial for disease outcome, but the mechanisms underlying this phenomenon remain unknown. In this study, we investigated whether transient transfection with wild-type and mutant-type SOD1 may lead to amplification of mutant SOD1-mediated toxicity in cortical neurons and astrocytes derived from wild-type and mutant-type (human G93A-SOD1) mice. In transgenic mice expressing either wild- or mutant-type SOD1, we found that green fluorescent protein (GFP)-wtSOD1 was present in the cytoplasm and nuclei of wild-type cortical neurons and astrocytes, whereas GFP-mutant SOD1 was mainly cytoplasmic in wild- and mutant-type cortical neurons and astrocytes. These findings indicate that intracellular propagation of misfolding of GFP-wt or mtSOD1 are possible mediators of toxic processes involved in initiating mislocalization and aggregation. Here, we provide evidence that cytoplasmic aggregates induce apoptosis in G93A-SOD1 mouse cortical neurons and astrocytes and that the toxicity of mutant SOD1 in astrocytes is similar to the pathological effects of ALS on neurons *in vitro*. Collectively, our results indicate that mtSOD1 probably interacts with wtSOD1 via an unknown mechanism to produce augmented toxicity and may influence aggregate formation and apoptosis.

Key words: Amyotrophic lateral sclerosis, cortical astrocyte, cortical neuron, G93A SOD1, mislocalization, apoptosis

INTRODUCTION

Amyotrophic lateral sclerosis (ALS) results from progressive loss of upper and lower motor neurons and denervation atrophy of skeletal muscles [1, 2]. However, the mechanisms underlying this selective degeneration remain unclear. Many studies have shown that ALS is at least partially a non-cell-autonomous disease and

Received July 31, 2015, Revised September 1, 2015,
Accepted September 1, 2015

* To whom correspondence should be addressed.
TEL: 82-2-2072-1015, FAX: 82-2-3672-7553
e-mail: jjsaint@snu.ac.kr

[#]These authors contributed equally to this work.

that cells such as astrocytes expressing mutant hSOD1 contribute to the pathogenesis of ALS [3]. In *in vitro* models of ALS, for example, extensive death of primary spinal cord motoneurons and embryonic stem cell-derived motoneurons is induced when cells are cultured on astrocytes expressing hSOD1^{G93A} or are exposed to conditioned medium derived from astrocytes expressing mutant SOD1 [4, 5]. These studies have clearly demonstrated that ALS is a non-cell-autonomous disease, where the interaction between motor neurons and glial cells plays a role in motor neuronal degeneration and death.

A pathologic hallmark of fALS is aggregation of mutant SOD1 [6]. Mutant SOD1 forms proteinaceous inclusions in the tissues of ALS patients, in transgenic mice, and in cultured cells [6-8]. In ALS, spinal cord proteins are subject to oxidative damage, and motor neurons are particularly vulnerable to oxidative stress. Another prominent feature of the pathology of ALS is the generation and migration of new cells, particularly astrocytes, within and around damaged regions [9]. The interplay between motor neurons and glial cells is important in the clinical progression of both familial and sporadic motor neuron diseases. ALS-associated mutations in SOD1, both missense and premature termination, include misfolding and aggregation of the protein [10]. However, the molecular features of the mutant SOD1 responsible for initiating disease have yet to be defined. Recent studies have brought attention to this question role of WT SOD1 as a modulator of disease initiation. In mice expressing a mutant protein that is easily distinguished from WT SOD1, such as the G85R, T116X, and L126Z mutants, it has been possible to determine that earlier disease onset is accompanied by the formation of detergent-insoluble aggregates that appear to contain both WT hSOD1 and mutant hSOD1 [11]. *In vitro*, small amounts of immature mutant SOD1 can seed the aggregation of WT SOD1 [12]. Collectively, these studies indicate a potential for WT hSOD1 to play a role in the aggregation of mutant SOD1 and to modulate the course of disease [11]. In the present study, we investigated whether the transient transfection of wild- and mutant-type SOD1 may lead to amplification of mutant SOD1-mediated toxicity and alteration of the intracellular localization of SOD1 in cortical neurons and astrocytes derived from wild-type and human G93A-SOD1 mice.

MATERIALS AND METHODS

Identification of transgenic mouse embryos expressing hSOD1^{G93A}

Transgenic mice originally obtained from Jackson Laboratories (Bar Harbor, ME, USA) and expressing a high copy number of mutant human SOD1 with Gly93Ala substitution (TgSOD1

G93A) were bred and maintained on a B6/SJL mice strain. Tail samples were collected from the embryos for genotyping. All procedures were performed in accordance with the Institutional Animal Care and Use Committee (IAUCC) guidelines of Seoul National University for the care and use of laboratory animals.

Primary cortical neuron and astrocyte culture

Cultures were prepared as previously described [13]; briefly, cortical neurons were isolated from pups at E16.5, and the brains were removed and placed on ice in Hank's Balanced Salt Solution (HBSS, Gibco). Twenty-four-well plates were seeded with 1 ml of plating medium (2% B27+1/100 penicillin/streptomycin, Invitrogen; 0.5 mM α -glutamine; neurobasal medium, Gibco). From DIV4, 10% fresh medium was added every 3~5 days. Cultured mouse astrocytes were prepared as described previously [14]. Briefly, cortices of 1-day-old mouse pups were dissected out and digested with trypsin for 10 min at 37°C. Single-cell suspensions were obtained by trituration, and cells were seeded onto poly-d-lysine-coated plates. Cultures were maintained in DMEM/F12 containing 10% heat-inactivated fetal bovine serum, 100 U/ml penicillin, and 100 mg/ml streptomycin. The cells were allowed to proliferate until they reached confluence. At this point, arabinofuranosylcytidine (AraC, 10 μ M; Sigma) was added to prevent the growth of oligodendrocytes. These cultures were maintained in complete medium.

Transient transfection with the human SOD1 gene

Cultured primary cortical neurons and astrocytes were seeded and allowed to attach before transfection with either green fluorescent protein (GFP)-wtSOD1 or mtSOD1 by using the transfection reagent supplied by the manufacturer, according to the instructions provided by the manufacturer (LipofectAMINE 2000 reagent, Invitrogen) for 24 h or 48 h. Transfection was performed in a medium containing 10% FBS but without antibiotics. Cultured neurons and astrocytes treated with the pcN1 vector alone were used as negative controls. Transfection efficiency was tested by using a vector containing the GFP gene.

Immunofluorescence staining and cell counting

Cells were plated on poly-d-lysine-coated 24-well or 6-well plates (SPL). Astrocytes and neuronal cells (24~48 h after transfection) were fixed with 4% paraformaldehyde (PFA) for 15 min at room temperature and then washed three times in PBS. Immunofluorescence staining and confocal microscopy were used to determine the levels of glial fibrillary acidic protein (GFAP, Sigma) and MAP-2 (NeoMarkers). The specimens were incubated for 1 h with anti-mouse secondary antibody conjugated with Alexa

555 (1:200, Invitrogen) after incubation with primary antibodies. Images were analyzed using a fluorescence microscope (Leica) coupled to a digital camera. Control experiments were performed in the absence of the primary antibody or in the presence of blocking peptide. GFP-fluorescent neurons and astrocytes were visualized with epifluorescent illumination on a Leica microscope. Subcellular localization patterns were documented with a $\times 20$ objective lens; total GFP-positive neurons and astrocytes were counted off-line within 20 randomly chosen fields in at least three independent cultures, and the percentage of mislocalized and aggregated neurons and astrocytes within the total number of GFP-positive cells was calculated. The cell death ratio was estimated by counting nuclear fragmented cell identification with DAPI nuclear stain. The cell death were documented with a $\times 20$ objective lens; total GFP-positive neurons and astrocytes were counted off-line within 20 randomly chosen fields in at least three independent cultures and in duplicate.

Western blot analysis

Western blot analysis was performed as previously described [15]. Cell lysates (30 μ g protein) were analyzed by Western blot using anti-cleaved caspase-3 (Cell Signaling), SOD1 (Abcam), and anti-GFP (Rockland) antibodies. Protein loading was controlled by probing for β -actin (Santa Cruz Biotech) on the same membrane.

Statistical Analysis

Data were analyzed using Prism software (GraphPad Software, San Diego, CA, USA), using either Student's *t*-test or one-way analysis of variance followed by a Newman-Keuls post-hoc test. Data are presented as the mean \pm standard error. Differences were considered statistically significant when $p < 0.05$.

RESULTS

To investigate whether the intracellular localization of SOD1 is altered by transient transfection with GFP-wt and mtSOD1 in WT or MT neurons, we transfected WT or MT cortical neurons with plasmids encoding either GFP-wt or G93A-SOD1 (mtSOD1), and observed the resulting changes in GFP-wt or mtSOD1 (Fig. 1A). Immunocytochemical analysis was performed on mice embryonic cortical neurons using MAP-2 as a neuronal marker. The data showed that in WT neurons, GFP-wtSOD1 localized to both the cytoplasm and the nucleus; cell death was not observed (Fig. 1A, B). In MT neurons, GFP-wtSOD1 was excluded from the nuclei; slightly increased rates of cell death were observed (Fig. 1A, B). Interestingly, in WT neurons transfected with GFP-mtSOD1, greater mislocalization was observed than in MT neurons

transfected with GFP-wtSOD1 (Fig. 1A, B). The results showed that MT neurons transfected with mtSOD1 were more susceptible to mislocalization and cell death; this effect was strongest in MT neurons transfected with GFP-mtSOD1 (Fig. 1A, B). We also analyzed the effect of GFP-wt and mtSOD1, using DAPI staining for detecting cell death. Both WT neurons transfected with GFP-mtSOD1 and MT neurons transfected with GFP-mtSOD1 showed strongly increased mislocalization. However, only MT neurons transfected with GFP-mtSOD1 showed severely increased cell death, compared with WT neurons transfected with GFP-mtSOD1 (Fig. 1A, B). These results indicate that transient transfection with GFP-wtSOD1 can modulate cell death in MT neurons.

To assess cellular localization against mtSOD1 misfolding and aggregation, we transfected WT or MT astrocytes with plasmids encoding either GFP-wt or mtSOD1, and observed the resulting changes in GFP-wt or mtSOD1 (Fig. 2A). Primary astrocytes were stained with GFAP and DAPI nuclear counterstain. WT astrocytes transfected with GFP-wtSOD1 predominantly colocalized in the cytoplasm and the nucleus, whereas those transfected with GFP-mtSOD1 localized in the cytosol (Fig. 2A). Cytoplasmic mislocalization was examined by detecting GFP-mtSOD1 at 24 h and 48 h post-transfection (Fig. 2B). However, cytoplasmic aggregates were predominantly examined by detecting the presence of GFP-mtSOD1 at 48 h post-transfection (Fig. 3A). We also evaluated the ability of GFP-mtSOD1 to modulate the aggregation of not only MT astrocytes but also WT astrocytes. At 48 h after transfection, we observed significant accumulation of aggregated SOD1 proteins in astrocytes transfected with GFP-mtSOD1. The cytoplasmic localization of aggregates containing mtSOD1 can clearly be seen in the fluorescence images. The aggregate formation ratio was measured by level of hSOD1-EGFP fluorescence in the cytoplasmic area (Fig. 3A). We detected a robust increase in cytoplasmic GFP-mtSOD1 relative to wtSOD1. However, in MT astrocytes transfected with wtSOD1, fewer aggregates were detectable than in WT astrocytes transfected with GFP-mtSOD1 (Fig. 3A). This finding indicates that higher levels of wtSOD1 modulate the generation of these aggregates in MT astrocytes. To estimate cellular apoptosis in response to mtSOD1 mislocalization and aggregation, we observed transfected WT or MT astrocytes. The cell death ratio was estimated by counting apoptosis morphological identification with DAPI nuclear stain. At 48 h after transfection, we observed significant cell death in astrocytes transfected with GFP-mtSOD1. However, in the MT astrocytes transfected with wtSOD1, rates of cell death were lower than in WT astrocytes transfected with GFP-mtSOD1 (Fig. 3B). This finding indicates that higher levels of wtSOD1 modulate the rate of cell death in MT astrocytes. Next, we investigated

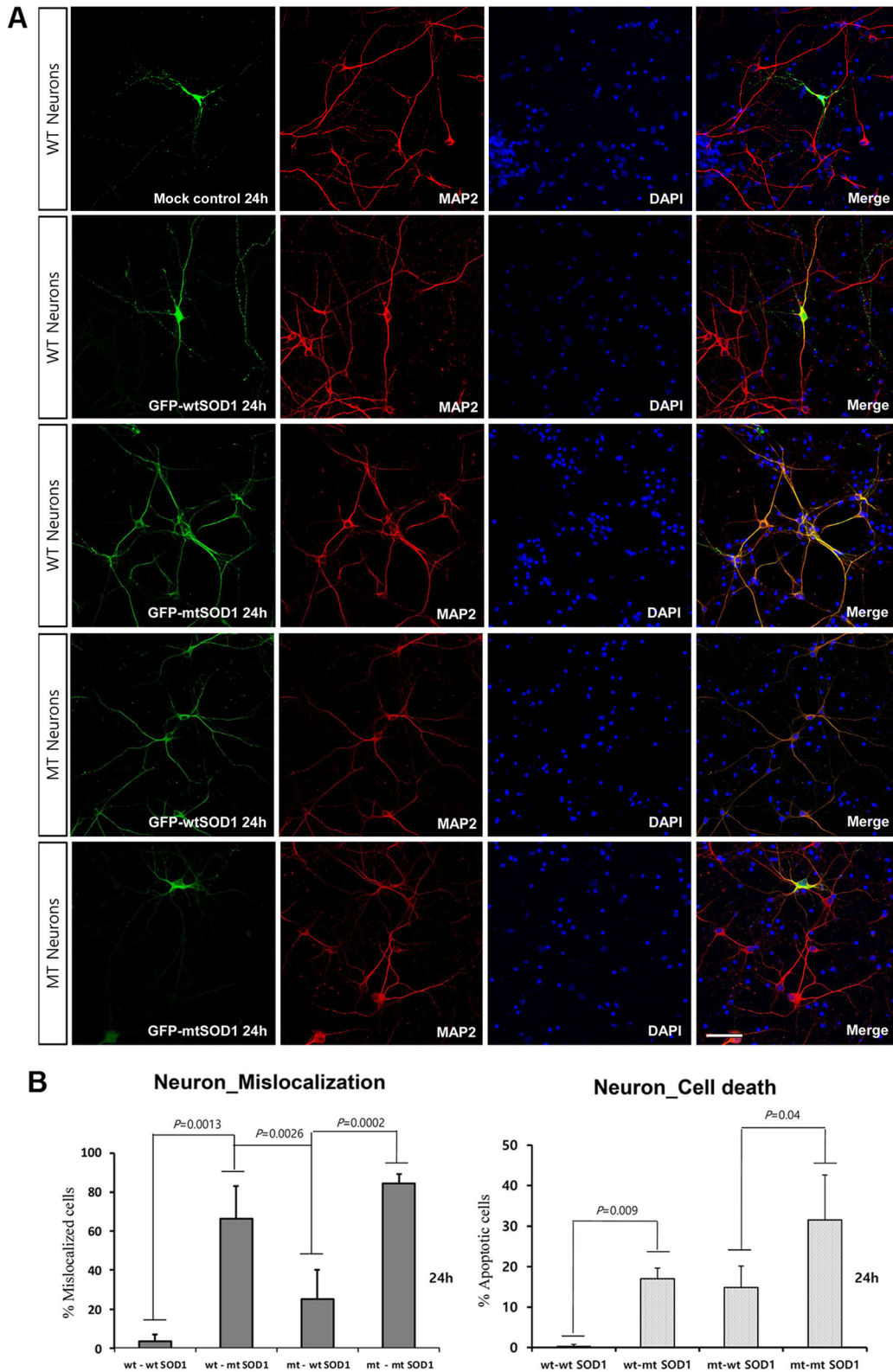


Fig. 1. Intracellular localization of transfected GFP-wt or mtSOD1 in cultured primary neurons from G93A-SOD1 mice. (A) Primary cortical neurons stained with MAP-2 (red) and DAPI (blue) nuclear counterstain. Mock transfection did not affect the cellular localization in both WT and MT neurons. In WT neurons, transfected GFP-wtSOD1 predominantly colocalized in the cytoplasm and the nucleus, whereas transfected mtSOD1 localized in the cytosol. Scale bar=50 μ m. (B) Cortical neurons were transfected with wt and mtSOD1, and then mislocalization and cell death were examined by DAPI staining. In WT neurons transfected with GFP-mtSOD1, increased mislocalization and cell death were observed. Data are expressed as mean values (\pm standard error).

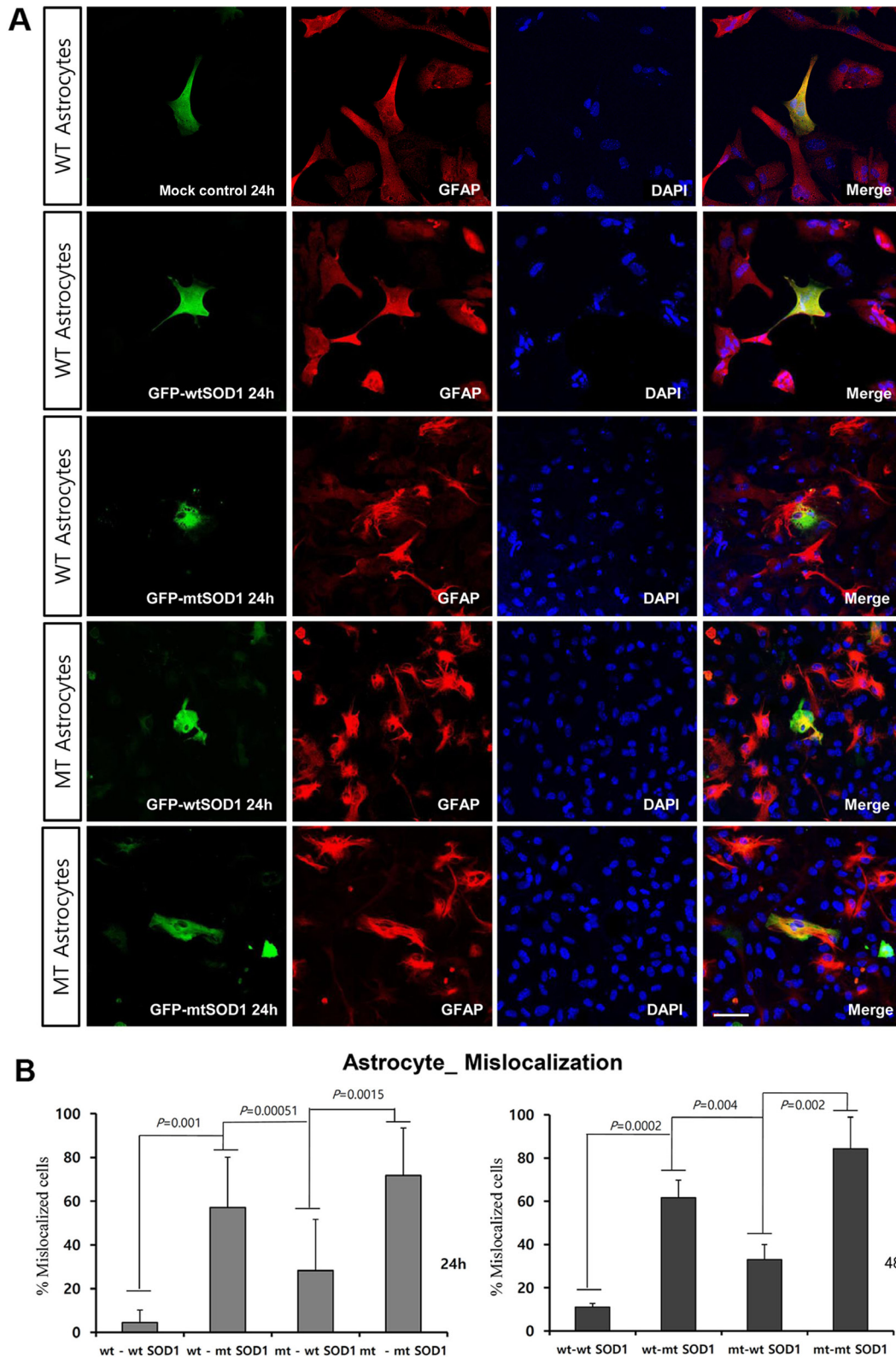


Fig. 2. Intracellular localization of transfected GFP-wt or mtSOD1 in cultured primary astrocytes from G93A-SOD1 mice. (A) Astrocytes stained with GFAP (red) and DAPI (blue) nuclear counterstain. Mock transfection did not affect the cellular localization in both WT and MT astrocytes. In WT astrocytes transfected with GFP-wtSOD1, protein predominantly colocalized in the cytoplasm and the nucleus, whereas in those transfected with mtSOD1, protein localized in the cytosol. Scale bar=50 μ m. (B) Cytoplasmic mislocalization was examined by measuring the intensity of hSOD1-EGFP fluorescence at 24 h and 48 h post-transfection. Data are expressed as mean values (\pm standard error).

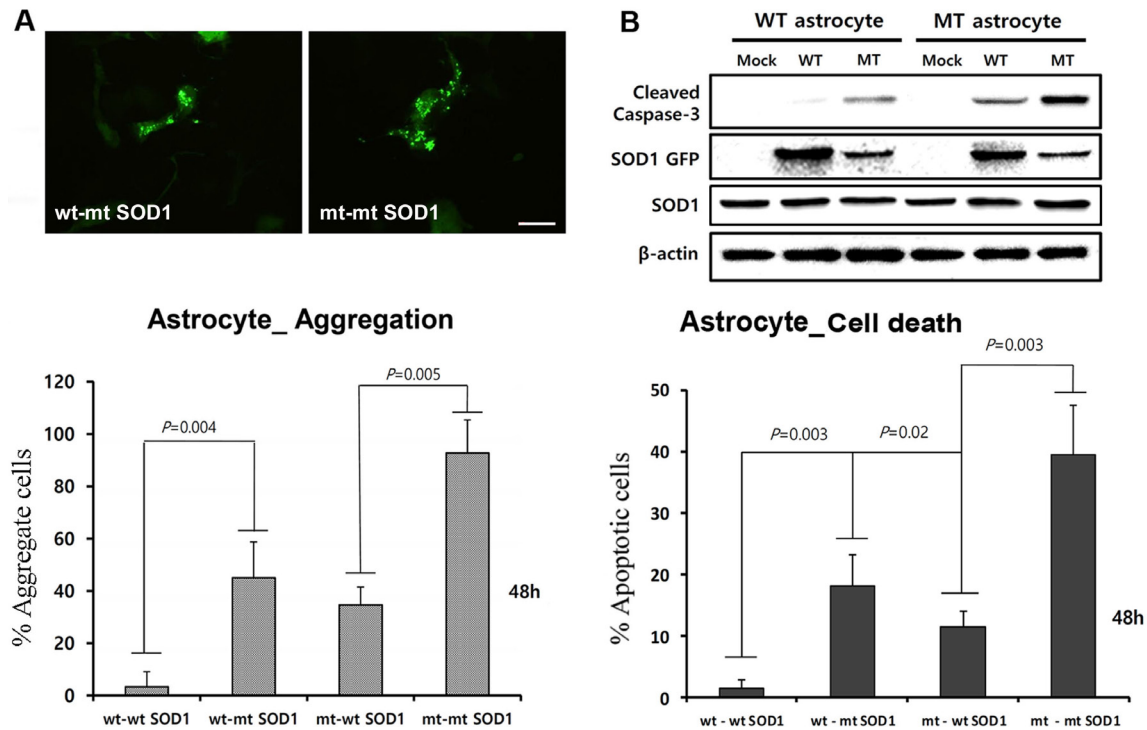


Fig. 3. Aggregate formation of mtSOD1 and expression of both wt and mtSOD1 induce cell death in mutated astrocytes transfected with GFP-mtSOD1. (A) Intracellular aggregates were induced in astrocytes by incubation with transfected GFP-mtSOD1. Aggregate formation was examined by measuring levels of hSOD1-EGFP fluorescence in the cytoplasmic area at 48 h post-transfection. In WT astrocytes transfected with GFP-mtSOD1, increased aggregate was observed. In MT astrocytes transfected with GFP-mtSOD1, expression of GFP-mtSOD1 significantly increased aggregate in astrocytes. Data are expressed as mean values (\pm standard error). Scale bar=50 μ m. (B) Apoptosis of astrocytes was indirectly assessed by evaluating changes in levels of cleaved caspase-3 by western blotting. Expression of cleaved caspase-3 was largely increased in mtSOD1-transfected astrocytes. In contrast, expression of cleaved caspase-3 was not affected in WT astrocytes with transfected wtSOD1. β -actin was used as the loading control. Astrocytes were transfected with wt and mtSOD1, and increased cell death was observed. In MT astrocytes transfected with GFP-mtSOD1, expression of GFP-mtSOD1 significantly increased apoptotic cell death in astrocytes. Data are expressed as mean values (\pm standard error).

whether or not cytoplasmic accumulation of mtSOD1 aggregates promotes apoptosis. Compared to WT astrocytes transfected with GFP-wtSOD1, the expression of cleaved-caspase-3 was strongly increased in WT and MT astrocytes transfected with GFP-mtSOD1 (Fig. 3B). In addition, cleaved caspase-3 expression remained detectable in WT astrocytes transfected with GFP-mtSOD1, suggesting that activation of apoptosis is dependent on mtSOD1 (Fig. 3B). Thus, we propose that mutant G93A-SOD1 mediates toxic events in apoptosis, with large detergent-insoluble aggregates, formed of wtSOD1 and transfected mtSOD1, playing roles in the events that initiate disease.

DISCUSSION

In the present study, we provide evidence that the cytoplasmic mislocalization and aggregation of mutant SOD1 induce cell death in wild and G93A-SOD1 mouse primary neurons and astrocytes. These findings indicate that intracellularly propagated GFP-

mtSOD1 is a possible mediator of toxic processes and is involved in initiating mislocalization and aggregation. We revealed that levels of mtSOD1 are lower than those of wtSOD1 in the nuclei of both neurons and astrocytes of transgenic mice expressing either human wtSOD1 or mutant G93A-SOD1. This may be because of the formation of insoluble high-MW species of mutant G93A-SOD1 that prevent diffusion of the protein across the nuclear membrane; wtSOD1 can diffuse across the nuclear membrane. Alternatively, nuclear deprivation of mtSOD1 might result from its more rapid rate of turnover in this compartment than wtSOD1. A previous study has shown the possible role of wtSOD1 as a modulator of disease initiation [11]. In addition, *in vitro*, small amounts of immature mtSOD1 can seed the aggregation of wtSOD1 [12]. Collectively, these studies indicate the potential for wtSOD1 to play a role in the aggregation of mtSOD1 and to modulate the course of disease. Similarly, we found that both wt and mtSOD1 play roles in the modulation of the course of disease in neurons and astrocytes, respectively.

SOD1 activity is generally reduced to approximately 50% of normal levels in patients with SOD1-fALS, owing to the reduced half-life of SOD1 mRNA in the CNS, and the possible effects of SOD1 protein misfolding and aggregation on activity. Our findings indicate that the effect of wtSOD1 on the toxicity of mtSOD1 is influenced by expression of mtSOD1 in both neurons and astrocytes. Using cell culture models of aggregation, we found that wtSOD1 modulates the aggregation of mutant proteins for formation of large detergent-insoluble structures. In MT cells, transfected GFP-wtSOD1 implicated soluble assemblies of wt and mtSOD1 as possible mediators of toxic processes involved in initiating mislocalization and aggregates. In this study, it seemed reasonable to assume that the above mechanism was relevant to both neurons and astrocytes because both cell types show similar effects in fALS. The present results indicate that cortical neurons have selective vulnerability to cell death following transfection with mtSOD1 and that the toxicity of mutant SOD1 on astrocytes is very similar to the pathological conditions of ALS observed in neurons *in vitro*. Thus, in neurons and astrocytes expressing mtSOD1 by transfection, it is clear that the effect of wtSOD1 on the toxicity of mtSOD1 is related to the level of mtSOD1 expression. These observations suggest that mtSOD1 is probably interacting with wtSOD1 to produce the augmented toxicity. In the G93A SOD1 mouse model, SOD1 is itself a major target of oxidation [16], and SOD1 oxidation and glutathionylation, which occur in response to oxidative stress, both increase the propensity of the dimer to dissociate and become misfolded [17-20]. Indeed, oxidized SOD1 has an increased propensity to misfold, causing seeding and aggregation of SOD1, and resulting in a reduction of dismutase activity. We noted that the strong link between SOD1 misfolding and its mislocalization make the two effects very difficult to assess independently. Recent studies demonstrating that SOD1 aggregation can be seeded *in vitro* from mouse Tg G93A-SOD1 spinal cord material [21], and “transmitted” between cells [22] extend the potential role for these pathogenic mechanisms to the clinical and pathological “spread” of ALS [23, 24].

These findings indicate that soluble assemblies of wt and mtSOD1 are possible mediators of the toxic processes involved in initiating mislocalization and aggregation. Mutant SOD1 is likely interacting with wtSOD1 to produce the augmented toxicity in primary cortical neurons and astrocytes. In addition, these results show that the toxicity of mutant SOD1 in astrocytes mimics the pathological condition of ALS in neurons *in vitro*. In conclusion, our results suggested a new model for a cellular network of mtSOD1 and wtSOD1 interactions for G93A-SOD1-induced cell death. Further studies will be necessary to address the unknown

mechanisms of interplay between motor neurons and astrocytes in ALS.

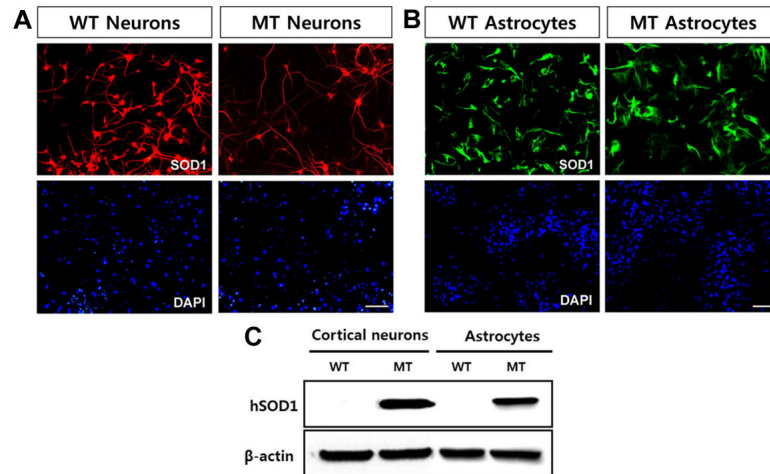
ACKNOWLEDGEMENTS

This study was supported by grants from the Korea Healthcare Technology R&D project, Ministry of health and Welfare, Republic of Korea (HI14C3347).

REFERENCES

1. Okado-Matsumoto A, Fridovich I (2002) Amyotrophic lateral sclerosis: a proposed mechanism. *Proc Natl Acad Sci U S A* 99:9010-9014.
2. Al-Chalabi A, Leigh PN (2000) Recent advances in amyotrophic lateral sclerosis. *Curr Opin Neurol* 13:397-405.
3. Ilieva H, Polymenidou M, Cleveland DW (2009) Non-cell autonomous toxicity in neurodegenerative disorders: ALS and beyond. *J Cell Biol* 187:761-772.
4. Di Giorgio FP, Carrasco MA, Siao MC, Maniatis T, Eggan K (2007) Non-cell autonomous effect of glia on motor neurons in an embryonic stem cell-based ALS model. *Nat Neurosci* 10:608-614.
5. Nagai M, Re DB, Nagata T, Chalazonitis A, Jessell TM, Wichterle H, Przedborski S (2007) Astrocytes expressing ALS-linked mutated SOD1 release factors selectively toxic to motor neurons. *Nat Neurosci* 10:615-622.
6. Bruijn LI, Houseweart MK, Kato S, Anderson KL, Anderson SD, Ohama E, Reaume AG, Scott RW, Cleveland DW (1998) Aggregation and motor neuron toxicity of an ALS-linked SOD1 mutant independent from wild-type SOD1. *Science* 281:1851-1854.
7. Son M, Cloyd CD, Rothstein JD, Rajendran B, Elliott JL (2003) Aggregate formation in Cu,Zn superoxide dismutase-related proteins. *J Biol Chem* 278:14331-14336.
8. Watanabe M, Dykes-Hoberg M, Culotta VC, Price DL, Wong PC, Rothstein JD (2001) Histological evidence of protein aggregation in mutant SOD1 transgenic mice and in amyotrophic lateral sclerosis neural tissues. *Neurobiol Dis* 8: 933-941.
9. Barbeito LH, Pehar M, Cassina P, Vargas MR, Peluffo H, Viera L, Estévez AG, Beckman JS (2004) A role for astrocytes in motor neuron loss in amyotrophic lateral sclerosis. *Brain Res Brain Res Rev* 47:263-274.
10. Wang J, Slunt H, Gonzales V, Fromholt D, Coonfield M, Copeland NG, Jenkins NA, Borchelt DR (2003) Copper-binding-site-null SOD1 causes ALS in transgenic mice:

- aggregates of non-native SOD1 delineate a common feature. *Hum Mol Genet* 12:2753-2764.
11. Deng HX, Shi Y, Furukawa Y, Zhai H, Fu R, Liu E, Gorrie GH, Khan MS, Hung WY, Bigio EH, Lukas T, Dal Canto MC, O'Halloran TV, Siddique T (2006) Conversion to the amyotrophic lateral sclerosis phenotype is associated with intermolecular linked insoluble aggregates of SOD1 in mitochondria. *Proc Natl Acad Sci U S A* 103:7142-7147.
 12. Chattopadhyay M, Durazo A, Sohn SH, Strong CD, Gralla EB, Whitelegge JP, Valentine JS (2008) Initiation and elongation in fibrillation of ALS-linked superoxide dismutase. *Proc Natl Acad Sci U S A* 105:18663-18668.
 13. Hilgenberg LG, Smith MA (2007) Preparation of dissociated mouse cortical neuron cultures. *J Vis Exp* 10:562.
 14. Jeon GS, Nakamura T, Lee JS, Choi WJ, Ahn SW, Lee KW, Sung JJ, Lipton SA (2014) Potential effect of S-nitrosylated protein disulfide isomerase on mutant SOD1 aggregation and neuronal cell death in amyotrophic lateral sclerosis. *Mol Neurobiol* 49:796-807.
 15. Schildge S, Bohrer C, Beck K, Schachtrup C (2013) Isolation and culture of mouse cortical astrocytes. *J Vis Exp* 19:pii: 50079.
 16. Andrus PK, Fleck TJ, Gurney ME, Hall ED (1998) Protein oxidative damage in a transgenic mouse model of familial amyotrophic lateral sclerosis. *J Neurochem* 71:2041-2048.
 17. Khare SD, Caplow M, Dokholyan NV (2004) The rate and equilibrium constants for a multistep reaction sequence for the aggregation of superoxide dismutase in amyotrophic lateral sclerosis. *Proc Natl Acad Sci U S A* 101:15094-15099.
 18. Rakhit R, Crow JP, Lepock JR, Kondejewski LH, Cashman NR, Chakrabarty A (2004) Monomeric Cu,Zn-superoxide dismutase is a common misfolding intermediate in the oxidation models of sporadic and familial amyotrophic lateral sclerosis. *J Biol Chem* 279:15499-15504.
 19. Ezzi SA, Urushitani M, Julien JP (2007) Wild-type superoxide dismutase acquires binding and toxic properties of ALS-linked mutant forms through oxidation. *J Neurochem* 102: 170-178.
 20. Wilcox KC, Zhou L, Jordon JK, Huang Y, Yu Y, Redler RL, Chen X, Caplow M, Dokholyan NV (2009) Modifications of superoxide dismutase (SOD1) in human erythrocytes: a possible role in amyotrophic lateral sclerosis. *J Biol Chem* 284:13940-13947.
 21. Chia R, Tattum MH, Jones S, Collinge J, Fisher EM, Jackson GS (2010) Superoxide dismutase 1 and tgSOD1 mouse spinal cord seed fibrils, suggesting a propagative cell death mechanism in amyotrophic lateral sclerosis. *PLoS One* 5: e10627.
 22. Münch C, O'Brien J, Bertolotti A (2011) Prion-like propagation of mutant superoxide dismutase-1 misfolding in neuronal cells. *Proc Natl Acad Sci U S A* 108:3548-3553.
 23. Ravits J, Laurie P, Fan Y, Moore DH (2007) Implications of ALS focality: rostral-caudal distribution of lower motor neuron loss postmortem. *Neurology* 68:1576-1582.
 24. Pokrishevsky E, Grad LI, Yousefi M, Wang J, Mackenzie IR, Cashman NR (2012) Aberrant localization of FUS and TDP43 is associated with misfolding of SOD1 in amyotrophic lateral sclerosis. *PLoS One* 7:e35050.



Supplementary Fig. 1. Cellular and morphological characterization of neurons and astrocytes enriched cultures. (A, B) Immunofluorescent staining for SOD1 of cortical neurons (red) and astrocytes (green) with DAPI for nuclei (blue). (C) Western blot analysis confirmed the presence of the human SOD1 in cortical neurons and astrocytes. Levels of hSOD1 in both mutant cortical neurons and mutant astrocytes identified compared with wild-type.