



Cost-effectiveness Analysis of Tisagenlecleucel Versus Blinatumomab in Children and Young Adults with Acute Lymphoblastic Leukemia: Partitioned Survival Model to Assess the Impact of an Outcome-Based Payment Arrangement

Amy Gye¹ · Stephen Goodall² · Richard De Abreu Lourenco²

Accepted: 4 September 2022 / Published online: 21 October 2022
© The Author(s) 2022, Corrected Publication 2022

Abstract

Objective This research assesses the impact of an outcome-based payment arrangement (OBA) linking complete remission (CR) to survival as a means of maintaining cost-effectiveness for a chimeric antigen receptor T cell (CAR-T) therapy in young patients with acute lymphoblastic leukemia (ALL).

Methods A partitioned survival model (PSM) was used to model the cost-effectiveness of tisagenlecleucel versus blinatumomab in ALL from the Australian healthcare system perspective. A decision tree modeled different OBAs by funneling patients into a series of PSMs based on response. Outcomes were informed by individual patient data, while costs followed Australian treatment practices. Costs and quality-adjusted life years (QALYs) were combined to calculate a single incremental cost-effectiveness ratio (ICER), reported in US dollars (2022) at a discount rate of 5% on costs and outcomes.

Results For the base case, incremental costs and benefit were \$379,595 and 4.27 QALYs, giving an ICER of \$88,979. The ICER was most sensitive to discount rate (\$57,660–\$75,081), “cure point” (\$62,718–\$116,206) and extrapolation method (\$76,018–\$94,049). OBAs had a modest effect on the ICER when response rates varied. A responder-only payment was the most effective arrangement for maintaining the ICER (\$88,249–\$89,434), although this option was associated with the greatest financial uncertainty. A split payment arrangement (payment on infusion followed by payment on response) reduced variability in the ICER (\$82,650–\$99,154) compared with a single, upfront payment (\$77,599–\$107,273).

Conclusion OBAs had a modest impact on reducing cost-effectiveness uncertainty. The value of OBAs should be weighed against the additional resources needed to administer such arrangements, and importantly overall cost to government.

1 Introduction

Chimeric antigen receptor T cell (CAR-T) therapies were the first cell and gene therapies to undergo health technology assessment (HTA) globally. At the time of assessment, clinical evidence was from single-arm studies and data on their long-term benefits and safety were immature [1–4]. Evidence limitations, together with the high cost of a once-off treatment meant that HTA agencies grappled with a high

level of decision uncertainty [1, 2, 5]. Consequently, public funding for CAR-T therapy was often conditional on Managed Access Programs (MAPs) [6].

MAPs have been proposed as potential solutions for addressing uncertainty where there is high clinical need but limited clinical evidence together with high upfront costs and consequently elevated financial risk [7–14]. A key recommendation from the National Institute of Health and Care Excellence's (NICE's) assessment of methods of review, economic evaluation and appraisal of cell and gene therapies was the importance of innovative payment methodologies for technologies where there is both a high level of uncertainty and high expected patient benefits [15]. Outcome-based payment arrangements (OBAs) are a way of addressing clinical uncertainties and financial risk associated with cell and gene therapies [7, 10, 16–20], although their ability to address uncertainty in cost-effectiveness has not been assessed. OBAs link the net price of a medical

✉ Amy Gye
amy.gye@student.uts.edu.au

¹ Novartis Pharmaceuticals Australia, University of Technology Sydney, Ultimo, NSW, Australia

² Centre for Health Economics Research and Evaluation (CHERE), University of Technology Sydney, Level 12, Building 10, 235 Jones Street, Ultimo, NSW 2007, Australia

Key Points

Health technology assessments of chimeric antigen receptor T cell therapies have been associated with a high uncertainty. Outcome-based payment arrangements (OBAs) aim to address uncertainty associated with the translation of trial outcomes to longer-term clinical outcomes. The extent to which OBAs alleviate uncertainty over the longer term is largely unknown.

There was a modest impact on reducing cost-effectiveness uncertainty under each OBA scenario compared with other sources of uncertainty in the model, whereas the potential financial uncertainty of an OBA was high. This emphasizes the need for careful consideration in making recommendations for OBAs, particularly given the resources and complexities associated with real-world data collection and payment arrangements.

If the main concern of governments and payors is the financial impact of high-cost therapies, then cost containment measures such as financial caps or price-volume agreements may be a more efficient approach to managing the high financial burden associated with cell and gene therapies compared with OBAs.

technology to clinically relevant endpoints at the patient level [8, 14, 16, 21, 22] (the taxonomy of OBAs in relation to MAPs has been described extensively [8, 11, 14]).

A review of HTAs of CAR-T therapies globally showed substantial variation in modeled, long-term benefit, particularly in young patients [6]. This variation was attributed to limited clinical evidence and the application of different extrapolation approaches beyond the observed period in the trials [6]. OBAs are tasked with addressing uncertainty over the longer term. But the extent to which this occurs in practice, either for cost-effectiveness or total financial exposure, remains largely unknown. The main objective of this research was to assess the value of OBAs in dealing with uncertainty in cost-effectiveness, by linking complete remission (CR) to survival in young patients with acute lymphoblastic leukemia (ALL) treated with tisagenlecleucel. This will assist in determining whether decisions to publicly fund cell and gene therapies should be conditional on OBAs. CR was the outcome of interest because it is a short-term objective outcome, allowing an OBA to be enacted over a reasonable timeframe, and CR has been linked to improved survival [23]. The impact of the timing of outcomes assessment and distribution of payments on cost-effectiveness was also assessed.

2 Methods

2.1 Study Setting and Patient Population

Australia was the setting for the economic analysis from a healthcare system perspective. The population was children and young adults (3–23 years of age) with relapsed or refractory ALL, based on evidence for tisagenlecleucel from two phase II, single-arm, multicenter studies, ELIANA [24] and ENSIGN [25].

2.2 Intervention and Comparator

The CAR-T therapy of interest was tisagenlecleucel. The intervention pathway commenced with the intention to treat with tisagenlecleucel, from the point of leukapheresis, followed by lymphodepleting chemotherapy before receiving a single infusion of tisagenlecleucel [26]. In accordance with the clinical trials, a small proportion of patients did not proceed to infusion due to an adverse event (AE), disease progression or death [24]. The comparator was blinatumomab, the standard of care in Australia prior to tisagenlecleucel being available and as accepted by the Australian Medical Services Advisory Committee (MSAC) in its consideration of tisagenlecleucel [27]. Blinatumomab is administered as a continuous infusion over a 28-day treatment cycle, and patients receive up to five cycles of treatment [28]. Evidence for blinatumomab was from a single-arm phase I/II study in young patients with relapsed/refractory ALL [29]. Another immunotherapy, inotuzumab ozogamicin, is also funded in Australia for ALL, for use after blinatumomab, although it was not considered a relevant comparator because it is not registered for use in children (< 18 years) [30].

2.3 Model Structure

The model contained treatment specific structures. For tisagenlecleucel, a partitioned survival model (PSM) was preceded by a decision tree to model the pathway from leukapheresis to assessment of response, similar to previous approaches [31–33] (Fig. 1). Patients infused with tisagenlecleucel were assessed for response at 3 or 12 months (reflecting possible OBA approaches).

Response was defined as a CR or CR with incomplete blood count (CRi), consistent with the primary outcome of the tisagenlecleucel clinical studies [24, 34]. Patients who did not achieve a CR/CRi or were lost to follow-up were considered non-responders. Because tisagenlecleucel may be used as a bridge to allogeneic stem cell transplant (SCT), responders were separated according to whether they received subsequent SCT or no SCT. SCT was considered separately in the model due to its high cost and

the uncertainty around the proportion of patients who will receive an SCT following tisagenlecleucel. Patients who died before a response assessment were assigned costs and outcomes for the preceding time period. Patients unable to receive an infusion due to an AE or disease progression proceeded to treatment with the comparator and were assigned the same costs and outcomes as blinatumomab in addition to associated pre-infusion costs for tisagenlecleucel.

Following the decision tree, patients moved to a PSM corresponding to the outcome achieved at the assessment point: response (no SCT), response (with SCT) or no response. Patients who achieved a response could either remain progression-free, progress or die, with the proportion of progression-free patients derived directly from the event-free survival (EFS) curve, the proportion dead as 1 minus the overall survival (OS) curve, and the proportion progressed as the difference between the OS and EFS curves [35]. It was assumed that non-responders had progressive disease, and therefore could only progress or die. The results for the progression-free, progressed or dead in each sub-group were combined to calculate the total costs and benefits of the entire cohort.

Treatment initiation with blinatumomab was considered from the point of infusion; hence, the entire patient cohort was modeled using a single PSM consisting of three health states—progression-free, progressed and dead—without considering response status (as there is no known OBA

associated with public funding for blinatumomab on the Pharmaceutical Benefits Scheme [PBS]). A 1-month cycle length with half-cycle correction was applied, and costs and benefits were measured over a lifetime horizon due to the potential curative benefit of tisagenlecleucel. Costs and outcomes were discounted at a rate of 5%, as recommended by MSAC guidelines [36] (Table 1).

2.4 Outcome Measures

Modeled benefits were measured in life years (LYs) and quality-adjusted life years (QALYs) derived from OS and EFS. EFS was measured from the time of first tisagenlecleucel infusion to relapse, death due to any cause or treatment failure. OS was measured from the time of first tisagenlecleucel infusion to the time of death due to any cause. For blinatumomab, OS was measured from the start of treatment until death or date of last evaluation for all treated patients. EFS was not reported in the blinatumomab clinical study [29]. EFS for blinatumomab was estimated assuming a constant cumulative hazard ratio (HR) of 0.83 between OS and EFS over time, based on the relationship observed between OS and EFS Kaplan-Meier (KM) curves from a published study of mitoxantrone in pediatric ALL [23]. The impact of this assumption was tested in sensitivity analyses using the lower and upper range of HRs for EFS:OS from the mitoxantrone study [23] (Table 1).

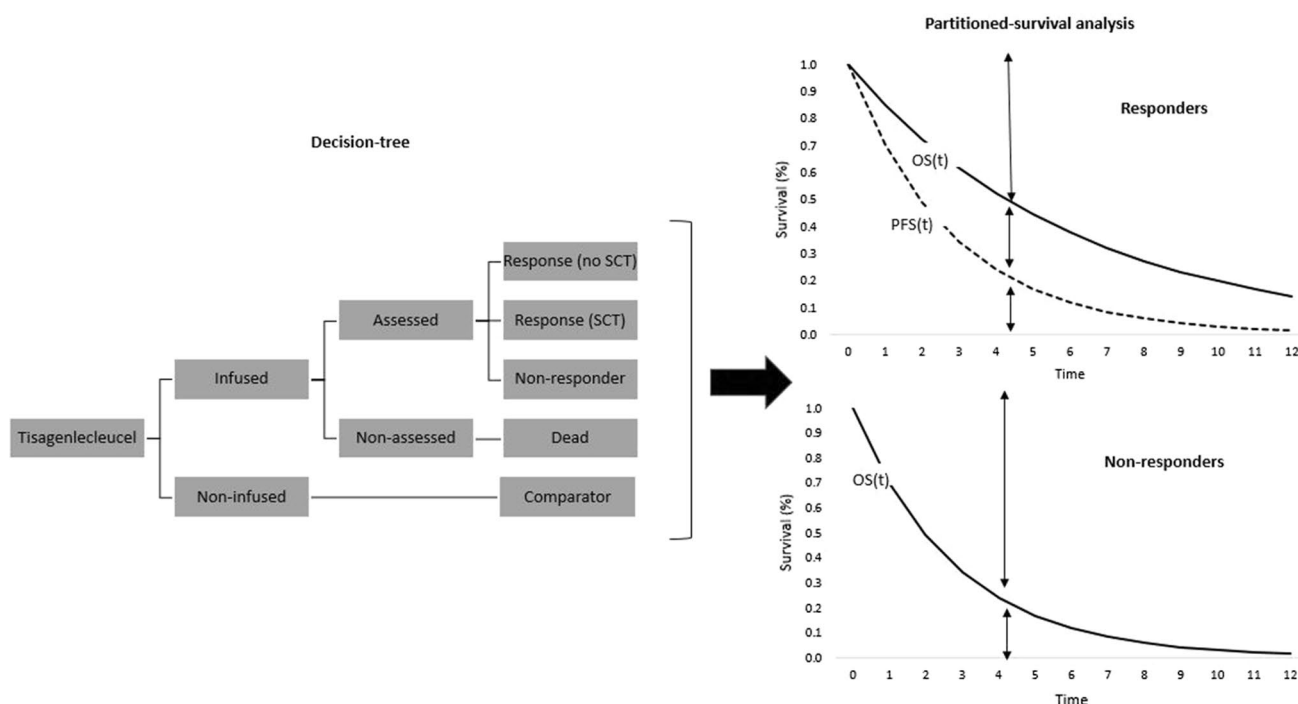


Fig. 1 Decision-tree and partitioned survival model structure. OS overall survival, PFS progression-free survival, SCT stem cell transplant, t time

2.5 Data Analysis

Visual inspection of the KM curves for OS for the ELIANA and ENSIGN studies showed the curves to be similar (Figure S1, see the electronic supplementary material), without statistically significant difference in OS between the studies (HR 0.62, 95% confidence interval [CI] 0.36–1.0; $P = 0.098$), allowing data from the studies to be pooled. OS was grouped according to response status; non-responders were patients not in CR/CRi at the specified time point and included patients who had never achieved a CR/CRi or had achieved a CR/CRi prior to the specified time point but had subsequently relapsed (Fig. 2a). The EFS analysis only included patients who achieved a CR/CRi at the specified time point (Fig. 2b).

The approach to the sub-group analysis by response for EFS followed the same approach to that described for OS. Analyses used data censored for SCT to allow for sensitivity analysis on different rates of subsequent SCT post infusion with tisagenlecleucel. Data for patients who received SCT following infusion with tisagenlecleucel were not analyzed separately due to small patient numbers, and SCT censored data were applied to this patient group.

A 30-day window either side of each response time point was included to reflect the variability in timing of response assessments in clinical practice. In the studies, clinical assessments were conducted monthly for the first 6 months; consequently, at the 3-month time point (61- to 122-day period), there was potential for duplicate patient entries as patients could have been assessed up to three times. To eliminate duplicate patient entries, only the last assessment during the 61- to 122-day period was included. A summary of the number of patients in each sub-group and by time point relative to the overall cohort is presented in supplementary Table S1.

For blinatumomab, time-to-event data were reconstructed from the published KM OS curve [29] using the software DigitizeIt. Pseudo-patient level data were generated using the approach by Guyot et al. (2012) [37] and KM analysis performed following the methods described by Wei and Royston (2017) [38]. The statistical software packages R [44], RStudio [39] and STATA [40] were used for the analysis of individual patient data (IPD) and generating KM data.

2.6 Extrapolation of Time-to-Event Data

In selecting the most appropriate approach to extrapolating survival data, duration of patient follow-up, completeness of the data, and level of censoring of the observed data were taken into account [35]. HTA agencies generally recommend the use of parametric models over Cox proportional hazard regression models where data are immature [35, 41]. Additionally, because the model used sub-group

data for tisagenlecleucel, an assumption of proportional hazards for the overall population was not appropriate. Instead, independent parametric models were fitted to each patient group in the model and the survival estimates weighted by the proportion of patients in each group (Figures S3 and S4, see the electronic supplementary material). Although not used in the extrapolation, the HR and CI for OS of tisagenlecleucel versus blinatumomab were derived using a Cox proportional hazard regression model, showing a significant improvement in OS for tisagenlecleucel for the overall cohort (supplementary text).

Selection of the parametric model was based on whether the model was statistically a good fit according to the Akaike information criterion (AIC) and Bayesian information criterion (BIC), and also whether the extrapolated portion was clinically and biologically plausible [42] (Table 1). Extrapolations were applied from the point on the KM curve where patient numbers were small (< 12 patients) due to a high level of censoring [43] (Table 1). EFS curves were constrained by the OS curve, so that EFS did not exceed OS at any time point. For blinatumomab, the extrapolated EFS curve was based on the HR of EFS:OS as described above.

2.7 Long-Term Survival

Extrapolation of the observed data using parametric models continued until end of year 4 (“cure point”), after which a standardized mortality ratio (SMR) was applied to age-adjusted all-cause mortality from Australian life tables [44]. An SMR of 9.05 was used based on a Canadian cohort study in childhood cancer patients who had survived at least 5 years [45]. SMR adjusted all-cause mortality was applied to both OS and EFS from year 5 onwards based on the observed relationship between OS and EFS [39], leading to a convergence of EFS and OS over time.

2.8 Utility Values

Utility values for the PD and EFS health states of the model were calculated from patient-level EQ-5D data from the ELIANA study using UK preference weights [46] and applied to both arms of the model due to the absence of published EQ-5D data for blinatumomab. Additionally, a general disutility associated with serious adverse events (SAEs), sourced from an economic analysis in chronic lymphocytic leukaemia [47], was applied to each arm, weighted by the duration and frequency of SAEs from the clinical studies [24, 29] with the exception of grade 3/4 cytokine release syndrome (CRS), where a higher disutility was assumed due to its potentially high severity. An additional disutility was also applied to the proportion of patients who went on to receive an SCT, assuming a duration of disutility of 1 year [48]. The utility and disutility

Table 1 Key parameter summary

Tisagenlecleucel	Base	Sensitivity	Source
Response rates ^a			
Response ^b	0.81	0.65, 0.97	ELIANA [24], ENSIGN [34]
No SCT	0.74	0.59, 0.89	
Subsequent SCT	0.07	0.06, 0.08	
Non-response	0.08	0.15, 0.01	
Dead	0.09	0.17, 0.01	
Lost to follow-up	0.02	0.04, 0.00	
Parametric extrapolation			
OS—responders	Lognormal	Loglogistic, Gompertz	—
OS—non-responders	Gompertz	—	—
EFS—responders	Lognormal	Loglogistic, Gompertz	—
Extrapolation point (months)			
OS—responders	40	20	—
OS—non-responders ^c	6	—	—
EFS—responders	40	20	—
Cure point, years	5	2, 10	—
Long-term SMR	9.05	7.24, 10.86	—
Tisagenlecleucel pricing ^d			
Base case	\$375,000	—	NICE [4]
Split ^e			
Payment 1 (infusion)	\$206,271	—	—
Payment 2 (response)	\$206,271	—	—
Payment 2 (lost to follow-up)	\$82,508	—	—
Responder only ^e	\$462,963	—	—
Resource use			
Proportion infused	0.83	0.66, 1.00	ELIANA [24], ENSIGN [34]
Proportion SCT ^f	0.09	0.00, 0.27	
IVIg use	0.88	0.70, 1.00	
IVIg duration, years	3	2.5, 80	
Blinatumomab			
SCT rate	0.34	—	Von Stackelberg [29]
OS parametric curve	Lognormal	—	—
OS extrapolation point (months)	25	13	—
HR EFS:OS	0.83	0.76, 0.99	—
Cost of blinatumomab	\$49,080	—	PBS [51]
Utility and disutility values			
EFS	0.80	—	ELIANA [24]
PD	0.63	—	
Grade 3/4 CRS	−0.8	—	Assumption
Other SAEs	−0.1	—	Casado [47]
Subsequent SCT	−0.57	—	Sung [48]
Discount rate	5.0%	1.5%, 3.5%	MSAC [36]
SCT cost	\$218,021	—	Gordon [52]

CRS cytokine release syndrome, EFS event-free survival, HR hazard ratio, IVIg intravenous immunoglobulin, MSAC Medical Services Advisory Committee, NICE National Institute of Health and Care Excellence, OS overall survival, PD progressive disease, SAE serious adverse event, SCT stem cell transplant, SMR standardized mortality ratio

^aInfused population

^bDefined as clinical remission

^cExtrapolation point not tested in sensitivity analysis due to short follow-up period due to low survival probability for non-responders

^dA published price for tisagenlecleucel was not available in Australia; therefore, a price of 375,000 US dollars was assumed, based on the NICE published price[4]

^eWeighted by the proportion of responders, non-responders and lost to follow-up at 3 months

^fAs a proportion of the infused population

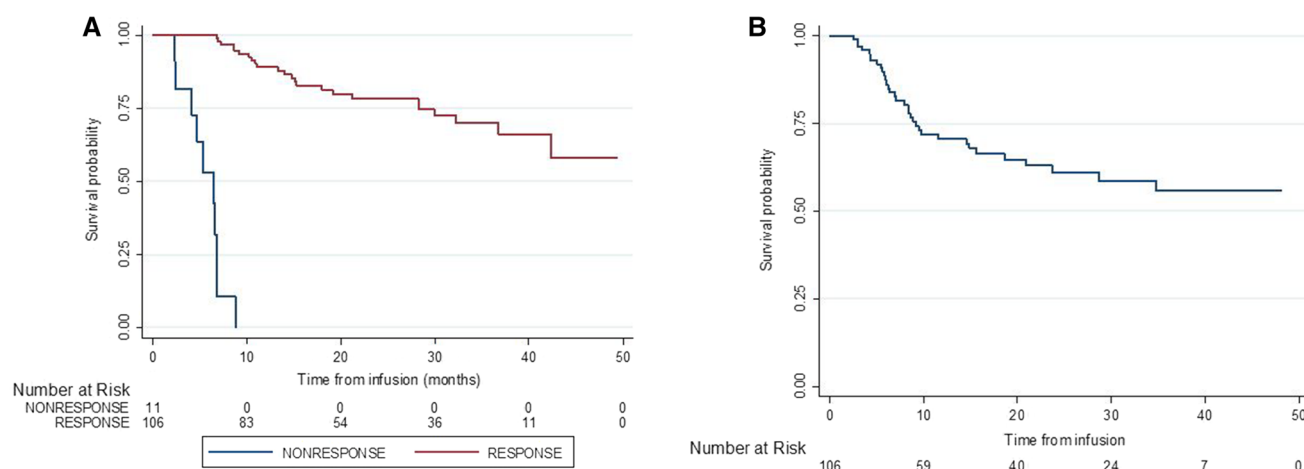


Fig. 2 Kaplan–Meier analysis of tisagenlecleucel for (A) overall survival by responders and non-responders and (B) event-free survival for responders

values are summarized in Table 1, with further information on the calculation of the disutilities in Table S2 (see the electronic supplementary material).

2.9 Resource Use and Costs

Cost inputs sourced from prior publications were adjusted for inflation using the Reserve Bank of Australia's (RBA's) inflation calculator [49], and when sourced from international publications, converted to Australian dollars using RBA exchange rates [50]. For the purposes of publication, costs are reported in US dollars [50].

The base case assumed a single upfront payment of \$375,000 for tisagenlecleucel based on the NICE published price [4]. The cost of blinatumomab was calculated from the Australian PBS price [51] using an average number of treatment cycles from the clinical study [29], noting that the net price may be lower due to confidential pricing arrangements (Table 1; Table S4 in the electronic supplementary material). Ancillary costs associated with the administration of each treatment included costs of infusion, length of hospital stay and management of SAEs including use of tocilizumab for CRS and intravenous immunoglobulin (IVIg) for B cell aplasia (supplementary Tables S3 and S5). For tisagenlecleucel, administrative costs included leukapheresis and bridging chemotherapy (supplementary Table S3). Subsequent SCT costs for tisagenlecleucel and blinatumomab were estimated from a local costing study [52]. Ancillary costs were calculated by multiplying the percentage utilization of each ancillary service from ELIANA [24] by the cost for each service estimated from Australian-relevant cost data (supplementary Tables S3 and S5). Other disease management costs associated with EFS and PD were applied using an average cost

from a cost-effectiveness analysis for pixantrone in adult non-Hodgkin lymphoma [53]. Resource use and costs for tisagenlecleucel and blinatumomab are summarized in supplementary Tables S3–S6.

2.9.1 OBA Scenario Analyses

Two different response-based payment structures were considered: (1) split payment; payment 1 on infusion and payment 2 on response, or a smaller payment where patients could not be assessed for response (lost to follow-up); (2) single payment on response only. The amount per payment was weighted by the proportion of responders and non-responders to equal a weighted price of \$375,000 for each scenario (Table 1). An equal weighted price was maintained across each OBA scenario because the purpose of the analysis was to test the impact of different payment structures, as opposed to the impact of a lower net price. To assess the impact of the OBA scenarios on the incremental cost-effectiveness ratio (ICER), response rate was varied by $\pm 20\%$ and rates of non-response, dead and lost to follow-up were varied proportionally (Table 1). Additionally, the differential cost of each scenario compared with the base case was calculated assuming a population size of 100 patients, to assess the budget impact of each payment structure.

2.9.2 Sensitivity Analyses

Variables tested in sensitivity analyses were those that had previously been identified to have a substantial impact on cost-effectiveness of tisagenlecleucel in ALL [6, 54, 55]. These included discount rate, type of parametric

extrapolation, long-term survival, SCT rate, infusion rate and IVIg use, as well as response rate (Table 1).

3 Results

3.1 Base Case

Applying a single, upfront payment of \$375,000 for tisagenlecleucel, resulted in a total cost of \$585,890, 7.13 LYs and 5.36 QALYs. The corresponding results for blinatumomab were costs of \$206,294, 1.80 LYs and 1.09 QALYs. This gave an incremental cost of \$379,595 and incremental benefit of 5.32 and 4.27 for LYs gained and QALYs gained, respectively. The ICER was \$71,318 per LY gained and \$88,979 per QALY gained over a patient's lifetime (Table 2). Results were very similar when assessed using the 12-month response rate for tisagenlecleucel; \$90,129 per QALY gained over a patient's lifetime (Table 2). The 12-month analysis is not discussed further due to the similarity in results to those of the 3-month analysis.

3.2 OBA Scenario Analyses

A change of $\pm 20\%$ in response rate had different impacts on the ICER depending on the type of payment structure applied (Figs. 3, 4; Table S7 in the electronic supplementary material). For the split payment scenario, the ICER range was \$82,650–\$99,154 per QALY gained. There was only minor variation in the ICER for the responder-only payment scenario, from \$88,249 to \$89,434 per QALY gained. For comparison, variation in the ICER was greatest with a single upfront payment (base case) ranging from \$77,599–\$107,273 per QALY. The reverse effect was seen when the financial impact was calculated for each scenario; the greatest variability in differential lifetime financial cost was associated with a responder only payment (\pm \$9,082,757), followed by a split payment arrangement (\pm 5,514,492), with the least variation (\pm \$2,857,757) associated with the base-case single upfront payment when the response rate was varied $\pm 20\%$ (Fig. 4).

3.3 Sensitivity Analyses

The ICER was most sensitive to discount rate, “cure point” and type of parametric extrapolation (Fig. 3). A discount

Table 2 Base-case results

	3 months		12 months	
	Tisagenlecleucel	Blinatumomab	Tisagenlecleucel	Blinatumomab
Outcomes (discounted)				
Discounted LYs	7.13	1.80	7.35	1.80
Discounted QALYs	5.36	1.09	5.53	1.09
Costs (discounted)				
Tisagenlecleucel ^a	\$385,667		\$385,668	\$0
Blinatumomab ^a	\$24,710	\$145,355	\$24,710	\$145,355
IVIg	\$23,841	\$4,382	\$21,981	\$4,382
EFS	\$41,217	\$7,128	\$42,602	\$7,128
PD	\$97,787	\$49,429	\$100,229	\$49,429
SCT ^b	\$12,667		\$31,636	\$0
Total discounted	\$585,890	\$206,294	\$606,825	\$206,294
Incremental				
Discounted costs	\$379,595		\$400,532	
Discounted LYs	5.32		5.55	
Discounted QALYs	4.27		4.44	
ICER				
Cost/LY	\$71,318		\$72,206	
Cost/QALY	\$88,979		\$90,129	

EFS event-free survival, ICER incremental cost-effectiveness ratio, IVIg intravenous immunoglobulin, LY life year, PD progressive disease, QALY quality-adjusted life year, SCT stem cell transplant

^aAncillary costs

^bCost of SCT not considered separately in the blinatumomab arm of the model but was included in the total cost of blinatumomab

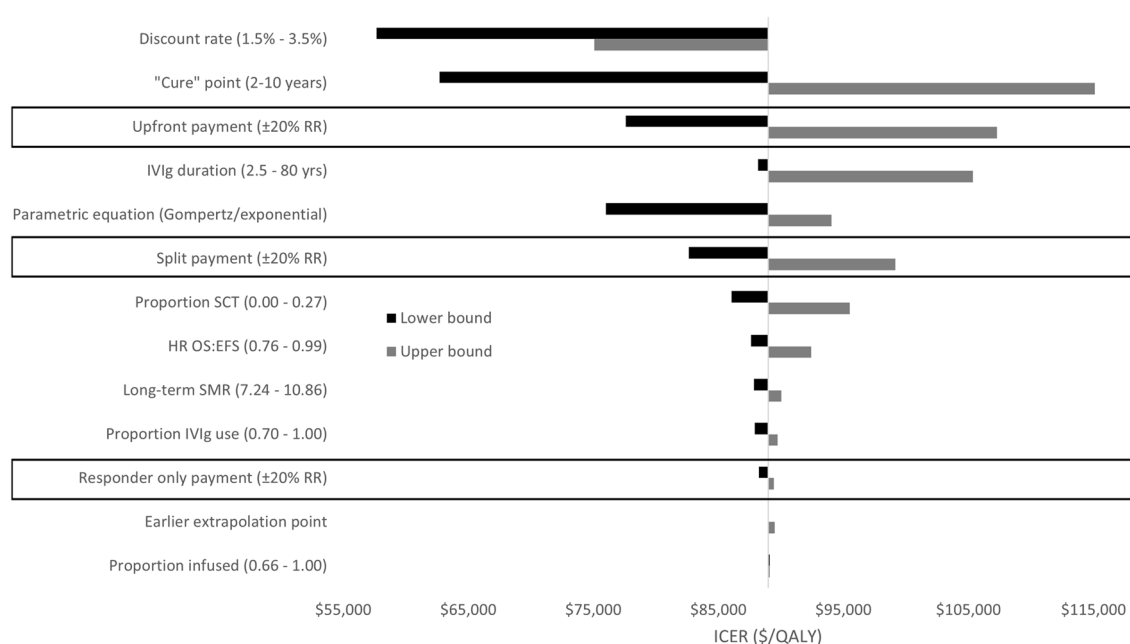


Fig. 3 Tornado diagram of cost-effectiveness for OBA scenarios (boxed) compared with other sensitivity analyses. *EFS* event-free survival, *HR* hazard ratio, *ICER* incremental cost-effectiveness ratio, *IVIg* intravenous immunoglobulin, *OBA* outcome-based payment

arrangement, *OS* overall survival, *QALY* quality-adjusted life year, *RR* response rate, *SCT* stem cell transplant, *SMR* standardized mortality ratio, *yrs* years

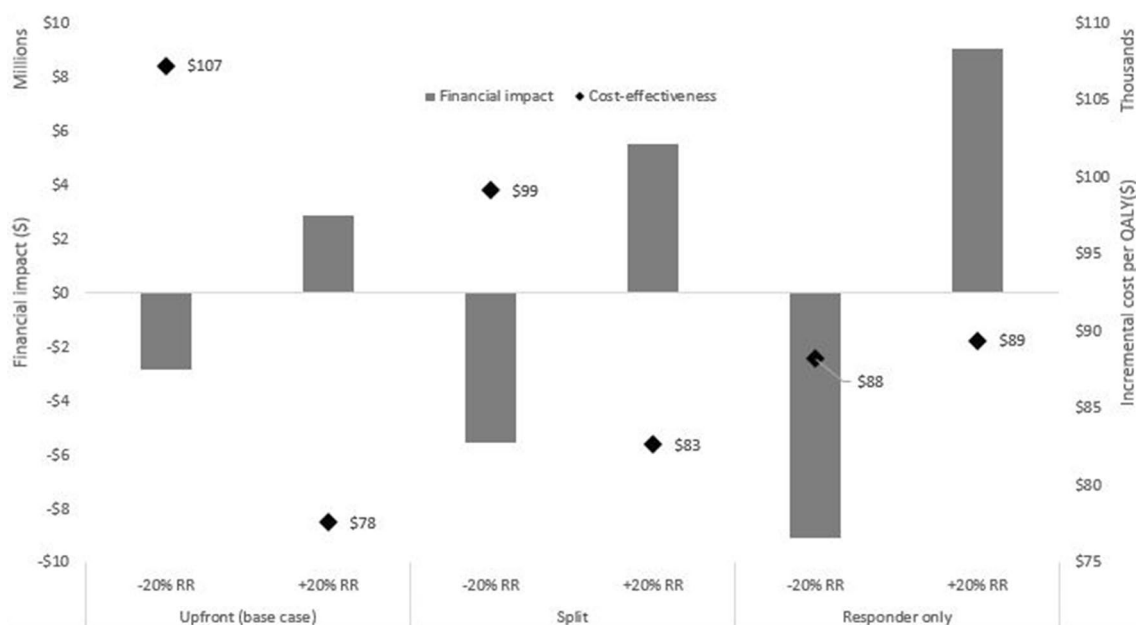


Fig. 4 Change in financial impact and cost-effectiveness (incremental cost per QALY) under varying RRs for the base case and each OBA scenario. Financial impact was calculated as the difference from base

case in lifetime incremental cost of tisagenlecleucel versus blinatumomab for 100 patients. *OBA* outcome-based payment arrangement, *QALY* quality-adjusted life year, *RR* response rate

rate of 1.5% had the biggest impact on improving cost-effectiveness, resulting in a decrease in the ICER to \$57,660 per QALY. Conversely, extending the cure point to 10 years

had the biggest impact on reducing cost-effectiveness by increasing the ICER to \$116,206 per QALY. The type of parametric extrapolation also had a substantial impact on the

ICER, varying from \$76,018 per QALY with an exponential equation to \$94,049 per QALY with Gompertz. An assumption of lifetime IVIg duration and an increase in SCTs post infusion with tisagenlecleucel increased the ICER considerably (\$105,351 and \$95,509 per QALY, respectively). Other variables tested in sensitivity analyses had a relatively minor impact.

4 Discussion

The base-case ICER (\$88,979 per QALY) was within the range of cost-effectiveness previously considered by MSAC in their original evaluation of tisagenlecleucel for ALL (\$69,280–\$98,450 per QALY [92,373–131,267 Australian dollars]) [6]. Although the base-case ICER was the same under each OBA scenario, each payment structure had a different impact on cost-effectiveness when response rates were varied, which is what the analysis sought to test. The responder-only payment was effective in maintaining a consistent ICER, although under a split payment arrangement, the ICER changed by – 7.1 to 11.4%. The biggest variation in the ICER occurred using a single upfront payment when response rates varied (– 12.8% to 20.6% change).

The responder-only OBA was effective at maintaining a consistent ICER because under this arrangement the cost of tisagenlecleucel was directly linked to the benefit, so that when response rates altered, costs altered proportionately. Although intuitive, this requires a direct relationship between response and longer-term survival, which this analysis demonstrates. Furthermore, a responder-only OBA resulted in high overall financial variability which may, in the eyes of the payor offset the benefit of a responder-only OBA in terms of maintaining cost-effectiveness.

Considering the high cost of cell and gene therapies, government may consider financial certainty more important than maintaining cost-effectiveness, particularly under a pay-for-responder arrangement which could see total financial costs increase substantially. Other considerations for a pay-for-responder arrangement include the reluctance of manufacturers to enter into an agreement where payment is entirely contingent on response and there is no recovery of costs for patients who do not respond.

In this analysis, the price per responder was determined by the proportion of patients in response in the clinical trials, to give an overall weighted price of \$375,000. This meant that for the responder-only OBA, there was no cost for patients who did not achieve a response, but the cost was inflated for patients who responded (Table 1). Consequently, when response rates varied, cost-effectiveness, set at the response rate seen in the clinical trials, was maintained. This approach does not adjust for a change in cost-effective price where response rates vary, highlighting the importance

in setting the weighted price at the point of the initial cost-effectiveness assessment.

Not surprisingly, cure point was also a key driver of cost-effectiveness, as this determines the point at which the extrapolation of the survival curve is informed by disease-adjusted general population mortality. Interestingly, cure point and the type of parametric extrapolation were more important drivers of cost-effectiveness than response rate, highlighting the limitations of a surrogate outcome as the basis for an OBA.

The assessment of response to tisagenlecleucel at different time points had little impact on cost-effectiveness. Incremental costs, QALYs and the resulting ICERs were similar regardless of whether patients were assessed for response at 3 or 12 months post infusion. Patients who were assessed at 3 months experienced higher rates of progression and mortality compared with patients who remained in response at 12 months, although this was offset by improved survival for the non-responder group at 3 months compared with 12 months. Therefore, the time point for response assessment for an OBA may not be important, where the overall price is weighted by response rate.

To our knowledge, this is the first analysis to link response to survival to assess the impact of an OBA on both costs and benefits in an analysis of cost-effectiveness of tisagenlecleucel in ALL. The Institute of Clinical and Economic Review in their assessment of effectiveness and value of CAR-T therapies considered an option for an OBA, which was replicated in subsequent publications, although was only considered in relation to the distribution of payments and did not link response status to survival [31–33]. Other studies have looked at the impact on the cost-effectiveness of tisagenlecleucel of a response-only payment using clinical remission, although none accounted for any associated change in benefit [54–58].

A recent review of OBAs highlighted an increase in their use in Australia, Italy, Sweden and the USA, noting that publicly available information was limited and, perhaps more importantly, that there was even less information on whether the objectives of these OBAs, in terms of realizing value for money, had been achieved [59].

Accelerated registration pathways have created a dilemma for HTA agencies that rely on value-based assessments for public funding decisions, as conditional registrations do not require the level of evidence preferred by HTA agencies [8]. Arguably, this has led to an increased interest in OBAs. If OBAs are to be used as a tool for addressing uncertainty in HTA, then their utility in addressing clinical and economic uncertainty should be weighed against the costs and resources required to administer an OBA at the point of assessment of cost-effectiveness, and importantly their financial impact. Although the administrative costs of OBAs were not explored as part of this research, previous

studies have highlighted substantial costs associated with their implementation [60, 61]. Decision makers may wish to consider alternative mechanisms of dealing with cost-effectiveness uncertainty, such as adopting conservative modeling assumptions, a higher cost-effectiveness threshold or lower levels of discounting. Cost containment could be achieved through financial caps or price-volume agreements that are easier to administer and do not rely on the collection of outcomes data.

4.1 Limitations

A limitation of the analysis was the small patient numbers by sub-group of the tisagenlecleucel data, which may reduce the reliability of extrapolation of the data beyond the observed period. Analysis of the data by sub-group required access to IPD, which means that application of this approach is likely to be limited to sponsor-led analyses. An inherent limitation was the lack of long-term, comparative data, although the included studies were considered the best sources of evidence by HTA agencies [6]. Although the analysis was limited by the level of evidence available, this is the issue that we sought to address and is one faced by decision makers on a daily basis.

5 Conclusion

In this analysis, a pay-for-responder arrangement was effective at maintaining a consistent ICER, although overall financial uncertainty was high. Compared with other variables in the model, a split-payment OBA had a modest impact on reducing uncertainty in cost-effectiveness. Although the greatest variability in cost-effectiveness was seen with a conventional single, upfront payment, this also resulted in the least financial variability. These results suggest that the value of implementing OBAs should be weighed against the additional resources needed to administer such arrangements, and importantly the overall cost to government of the relevant technology. This analysis used a weighted pricing approach so that the overall price for each OBA was equivalent to the base-case single, upfront price at the response rates seen in the clinical trials. However, price is not readjusted for cost-effectiveness at different response rates, highlighting the importance in determining the weighted price at the point of initial cost-effectiveness assessment. Further work could consider measuring the impact of OBAs retrospectively to evaluate whether objectives, in terms of ensuring value for money, were met.

Supplementary Information The online version contains supplementary material available at <https://doi.org/10.1007/s40273-022-01188-w>.

Acknowledgements Support was provided by co-supervisor Mark Schulz of Novartis Pharmaceuticals Australia.

Declarations

Funding Open Access funding enabled and organized by CAUL and its Member Institutions.

Data availability The data utilized in this study were sourced from clinical trials that were conducted according to the ethical principles of the Declaration of Helsinki. This research was considered appropriate to be conducted under the UTS Human Research Ethics Committee (UTS HREC REF NO. ETH18-2507).

Source of funding Amy Gye is an employee of Novartis Pharmaceuticals Australia. This research is part of an Industry Doctorate Program at the Centre for Health Economics Research and Evaluation, University of Technology Sydney in collaboration with Novartis Pharmaceuticals Australia. Novartis Pharmaceuticals Australia provides a Research Support Fee. Ms. Gye receives a salary from Novartis.

Conflict of interest Amy Gye is an employee of Novartis Pharmaceuticals Australia. No other disclosures were reported.

Author contributions Concept and design: Gye, Goodall, De Abreu Lourenco; acquisition of data: Gye; analysis and interpretation of data: Gye; drafting of the manuscript: Gye, Goodall, De Abreu Lourenco; critical revision of the paper for important intellectual content: Goodall, De Abreu Lourenco; supervision: Goodall, De Abreu Lourenco.

Ethics approval Analysis of clinical trial data was conducted retrospectively, and ethics approval was granted by the University of Technology Sydney Human Research Ethics Committee.

Open Access This article is licensed under a Creative Commons Attribution-NonCommercial 4.0 International License, which permits any non-commercial use, sharing, adaptation, distribution and reproduction in any medium or format, as long as you give appropriate credit to the original author(s) and the source, provide a link to the Creative Commons licence, and indicate if changes were made. The images or other third party material in this article are included in the article's Creative Commons licence, unless indicated otherwise in a credit line to the material. If material is not included in the article's Creative Commons licence and your intended use is not permitted by statutory regulation or exceeds the permitted use, you will need to obtain permission directly from the copyright holder. To view a copy of this licence, visit <http://creativecommons.org/licenses/by-nc/4.0/>.

References

1. Lloyd-Williams H, Hughes DA. A systematic review of economic evaluations of advanced therapy medicinal products. *Br J Clin Pharmacol*. 2020;8:2428–43.
2. Whittington MD, McQueen RB, Campbell JD. Valuing chimeric antigen receptor T-cell therapy: current evidence, uncertainties, and payment implications. *J Clin Oncol*. 2020;38(4):359–66.
3. National Institute for Health and Care Excellence (NICE). Final appraisal document—Tisagenlecleucel for treating relapsed or refractory diffuse large B-cell lymphoma after 2 or more systemic therapies. NICE; 2018. <https://www.nice.org.uk/guidance/ta567/documents/final-appraisal-determination-document>. Accessed 21 Dec 2020.

4. National Institute for Health and Care Excellence. Final appraisal document—Tisagenlecleucel for treating relapsed or refractory B-cell acute lymphoblastic leukaemia in people aged up to 25 years. NICE; 2018. <https://www.nice.org.uk/guidance/ta554/documents/final-appraisal-determination-document>. Accessed 21 Dec 2020.
5. Angelis A, Naci H, Hackshaw A. Recalibrating health technology assessment methods for cell and gene therapies. *Pharmacoeconomics*. 2020;38(12):1297–308. <https://doi.org/10.1007/s40273-020-00956-w>.
6. Gye AGS, De Abreu LR. A systematic review of health technology assessments of chimeric antigen receptor T-cell therapies in young compared with older patients. *Value Health*. 2021;25(1):47–58. <https://doi.org/10.1016/j.jval.2021.07.008>.
7. Coyle D, Durand-Zaleski I, Farrington J, et al. HTA methodology and value frameworks for evaluation and policy making for cell and gene therapies. *Eur J Health Econ*. 2020;21(9):1421–37. <https://doi.org/10.1007/s10198-020-01212-w>.
8. Dabbous M, Chachoua L, Caban A, Toumi M. Managed entry agreements: policy analysis from the European perspective. *Value Health*. 2020;23(4):425–33. <https://doi.org/10.1016/j.jval.2019.12.008>.
9. Drummond MF, Neumann PJ, Sullivan SD, et al. Analytic considerations in applying a general economic evaluation reference case to gene therapy. *Value Health*. 2019;22(6):661–8.
10. Jonsson B, Hampson G, Michaels J, Towse A, von der Schulenburg JMG, Wong O. Advanced therapy medicinal products and health technology assessment principles and practices for value-based and sustainable healthcare. *Eur J Health Econ*. 2019;20(3):427–38.
11. Carlson JJ, Sullivan SD, Garrison LP, Neumann PJ, Veenstra DL. Linking payment to health outcomes: a taxonomy and examination of performance-based reimbursement schemes between health-care payers and manufacturers. *Health Policy*. 2010;96(3):179–90. <https://doi.org/10.1016/j.healthpol.2010.02.005>.
12. Bach PB, Giral SA, Saltz LB. FDA approval of tisagenlecleucel: promise and complexities of a \$475 000 cancer drug. *JAMA*. 2017;318(19):1861–2. <https://doi.org/10.1001/jama.2017.15218>.
13. Barlow JF, Yang M, Teagarden JR. Are payers ready, willing, and able to provide access to new durable gene therapies? *Value Health*. 2019;22(6):642–7. <https://doi.org/10.1016/j.jval.2018.12.004>.
14. Garrison LP Jr, Towse A, Briggs A, et al. Performance-based risk-sharing arrangements—good practices for design, implementation, and evaluation: report of the ISPOR good practices for performance-based risk-sharing arrangements task force. *Value Health*. 2013;16(5):703–19. <https://doi.org/10.1016/j.jval.2013.04.011>.
15. Crabb N, Stevens, A for the Centre for Health Technology Evaluation, National Institute for Health and Care Excellence (NICE). Exploring the assessment and appraisal of regenerative medicines and cell therapy products. 2016:19. <https://www.nice.org.uk/Media/Default/About/what-we-do/Science%20policy%20and%20research/Regenerative-medicine-study-march-2016.pdf>. Accessed 21 Dec 2020.
16. Brown JD, Sheer R, Pasquale M, et al. Payer and pharmaceutical manufacturer considerations for outcomes-based agreements in the United States. *Value Health*. 2018;21(1):33–40. <https://doi.org/10.1016/j.jval.2017.07.009>.
17. Jørgensen J, Mungapen L, Kefalas P. Data collection infrastructure for patient outcomes in the UK—opportunities and challenges for cell and gene therapies launching. *J Mark Access Health Policy*. 2019;7(1):1573164. <https://doi.org/10.1080/20016689.2019.1573164>.
18. Jørgensen J, Hanna E, Kefalas P. Outcomes-based reimbursement for gene therapies in practice: the experience of recently launched CAR-T cell therapies in major European countries. *J Mark Access Health Policy*. 2020;8(1):1715536. <https://doi.org/10.1080/20016689.2020.1715536>.
19. Jørgensen J, Kefalas P. The use of innovative payment mechanisms for gene therapies in Europe and the USA. *Regen Med*. 2021;16(4):405–22. <https://doi.org/10.2217/rme-2020-0169>.
20. Michelsen S, Nachi S, Van Dyck W, Simoens S, Huys I. Barriers and opportunities for implementation of outcome-based spread payments for high-cost, one-shot curative therapies. *Front Pharmacol*. 2020;11: 594446. <https://doi.org/10.3389/fphar.2020.594446>.
21. Vitry A, Roughead E. Managed entry agreements for pharmaceuticals in Australia. *Health Policy*. 2014;117(3):345–52. <https://doi.org/10.1016/j.healthpol.2014.05.005>.
22. Kim AE, Choi DH, Chang J, Kim SH. Performance-based risk-sharing arrangements (PBRSA): is it a solution to increase bang for the buck for pharmaceutical reimbursement strategy for our nation and around the world? *Clin Drug Investig*. 2020;40(12):1107–13. <https://doi.org/10.1007/s40261-020-00972-w>.
23. Parker C, Waters R, Leighton C, et al. Effect of mitoxantrone on outcome of children with first relapse of acute lymphoblastic leukaemia (ALL R3): an open-label randomised trial. *Lancet*. 2010;376(9757):2009–17. [https://doi.org/10.1016/S0140-6736\(10\)62002-8](https://doi.org/10.1016/S0140-6736(10)62002-8).
24. Maude SL, Laetsch TW, Buechner J, et al. Tisagenlecleucel in children and young adults with B-Cell lymphoblastic leukemia. *N Engl J Med*. 2018;378(5):439–48. <https://doi.org/10.1056/NEJMoa1709866>.
25. Levine JE, Grupp SA, Pulsipher MA, et al. Pooled safety analysis of tisagenlecleucel in children and young adults with B cell acute lymphoblastic leukemia. *J Immunother Cancer*. 2021. <https://doi.org/10.1136/jitc-2020-002287>.
26. Novartis Pharmaceuticals Australia. Australian Product Information—Kymriah (tisagenlecleucel) suspension. Therapeutic Goods Administration (TGA); 2021. 14 September 2021. <https://www.ebs.tga.gov.au/ebs/picmi/picmirepository.nsf/pdf?OpenAgent&id=CP-2021-PI-02122-1&d=20220223172310101>. Accessed 23 Feb 2022.
27. Medical Services Advisory Committee (MSAC). Public summary document: application no. 1519—Tisagenlecleucel for treatment of refractory CD19-positive leukaemia and lymphoma. April 2019. MSAC; 2019. [http://www.msac.gov.au/internet/msac/publicshing.nsf/Content/BE2E1EB50ED57442CA2581F4000C1723/\\$File/1519-Final%20PSD-April%202019_redacted.pdf](http://www.msac.gov.au/internet/msac/publicshing.nsf/Content/BE2E1EB50ED57442CA2581F4000C1723/$File/1519-Final%20PSD-April%202019_redacted.pdf). Accessed 21 Dec 2020.
28. Amgen Australia. Australian Product Information—Blinatumomab powder for injection. Therapeutic Goods Administration (TGA); 2021. <https://www.ebs.tga.gov.au/ebs/picmi/picmirepository.nsf/pdf?OpenAgent&id=CP-2015-PI-02791-1>. Accessed 23 Feb 2022.
29. Von Stackelberg A, Locatelli F, Zugmaier G. Phase I/Phase II study of blinatumomab in pediatric patients with relapsed/refractory acute lymphoblastic leukemia. *J Clin Oncol Off J Am Soc Clin Oncol*. 2016;34(36):4381–9.
30. Therapeutic Goods Administration (TGA). Australian Product Information—Besponsa (inotuzumab ozogamicin). 2021. <https://www.ebs.tga.gov.au/ebs/picmi/picmirepository.nsf/pdf?OpenAgent&id=CP-2018-PI-01685-1&d=20220815172310101>. Accessed 15 Aug 2022.
31. Institute for Clinical and Economic Review (ICER). Adapted value assessment methods for high-impact "single and short-term therapies" (SSTs). ICER; 2019:1–13. http://icer.org/wp-content/uploads/2019/11/ICER_SST_FinalAdaptations_111219-1.pdf. Accessed 21 Dec 2020.
32. Whittington MD, McQueen RB, Ollendorf DA, et al. Long-term survival and value of chimeric antigen receptor T-cell therapy for

- pediatric patients with relapsed or refractory leukemia. *JAMA Pediatr.* 2018;172(12):1161–8.
33. Whittington MD, McQueen RB, Ollendorf DA, et al. Long-term survival and cost-effectiveness associated with axicabtagene ciloleucel vs chemotherapy for treatment of B-cell lymphoma. *JAMA Netw Open.* 2019;2(2): e190035.
 34. Maude SL, Frey N, Shaw PA, et al. Chimeric antigen receptor T cells for sustained remissions in leukemia. *N Engl J Med.* 2014;371(16):1507–17. <https://doi.org/10.1056/NEJMoa1407222>.
 35. Woods B, Sideris E, Palmer S, Latimer N, Soares, M. NICE DSU technical support document 19: partitioned survival analysis for decision modelling in health care; a critical review. 2017. <http://nicedsu.org.uk/wp-content/uploads/2017/06/Partitioned-Survival-Analysis-final-report.pdf>. Accessed 27 Jan 2021.
 36. Medical Services Advisory Committee (MSAC). Guidelines for preparing assessments for the Medical Services Advisory Committee. 2021; version 1.0. May 2021. [http://www.msac.gov.au/internet/msac/publishing.nsf/Content/E0D4E4EDDE91EAC8CA2586E0007AFC75/\\$File/MSAC%20Guidelines-complete-16-FINAL\(18May21\).pdf](http://www.msac.gov.au/internet/msac/publishing.nsf/Content/E0D4E4EDDE91EAC8CA2586E0007AFC75/$File/MSAC%20Guidelines-complete-16-FINAL(18May21).pdf). Accessed 7 Sept 2021.
 37. Guyot P, Ades AE, Ouwens MJ, Welton NJ. Enhanced secondary analysis of survival data: reconstructing the data from published Kaplan–Meier survival curves. *BMC Med Res Methodol.* 2012;12:9. <https://doi.org/10.1186/1471-2288-12-9>.
 38. Wei Y, Royston P. Reconstructing time-to-event data from published Kaplan–Meier curves. *Stata J.* 2017;17(4):786–802.
 39. RStudio: Integrated Development Environment for R. 2015. <http://www.rstudio.com/>
 40. Stata Statistical Software: Release 13. StataCorp LP; 2013.
 41. Canadian Agency for Drugs and Technologies in Health (CADTH). Guidelines for the economic evaluation of health technologies. 2017. <https://www.cadth.ca/guidelines-economic-evaluation-health-technologies-canada-4th-edition>. Accessed 4 Nov 2021.
 42. Latimer N. NICE DSU Technical Support Document 14: Undertaking survival analysis for economic evaluations alongside clinical trials—extrapolation with patient-level data. 2011. <http://www.nicedsu.org.uk>. Accessed 8 Sept 2021.
 43. Australian Government Department of Health. Guidelines for preparing a submission to the Pharmaceutical Benefits Advisory Committee (Version 5.0). 2016. <https://pbac.pbs.gov.au/content/information/files/pbac-guidelines-version-5.pdf>. Accessed 10 Nov 2021.
 44. Australian Bureau of Statistics (ABS). Data from: Life Tables, 2018–2020. 2021.
 45. MacArthur AC, Spinelli JJ, Rogers PC, Goddard KJ, Abanto ZU, McBride ML. Mortality among 5-year survivors of cancer diagnosed during childhood or adolescence in British Columbia, Canada. *Pediatr Blood Cancer.* 2007;48(4):460–7. <https://doi.org/10.1002/pbc.20922>.
 46. Dolan P. Modeling valuations for EuroQol health states. *Med Care.* 1997;35(11):1095–108. <https://doi.org/10.1097/00005650-199711000-00002>.
 47. Casado LF, Hernandez JA, Jarque I, Echave M, Casado MA, Castro A. Cost-utility analysis of idelalisib in combination with rituximab in relapsed or refractory chronic lymphocytic leukaemia. *Eur J Haematol.* 2018;100(3):264–72. <https://doi.org/10.1111/ejh.13007>.
 48. Sung L, Buckstein R, Doyle JJ, Crump M, Detsky AS. Treatment options for patients with acute myeloid leukemia with a matched sibling donor. *Cancer.* 2003;97(3):592–600.
 49. Reserve Bank of Australia (RBA). Inflation calculator. <https://www.rba.gov.au/calculator/>. Accessed 4 Apr 2022.
 50. Reserve Bank of Australia (RBA). Exchange rates. <https://www.rba.gov.au/statistics/frequency/exchange-rates.html>. Accessed 4 Apr 2022.
 51. Australian Government Department of Health. Pharmaceutical Benefits Scheme (PBS). www.pbs.gov.au. Accessed 22 Feb 2022.
 52. Gordon R, Thompson C, Carolan J, Eckstein G, Rostron C. A costing study of blood and marrow transplantation services in NSW: final report. 2009.
 53. Muszbek N, Kadambi A, Lanitis T, et al. The cost-effectiveness of pixantrone for third/fourth-line treatment of aggressive non-Hodgkin's lymphoma. *Clin Ther.* 2016;38(3):503–15. <https://doi.org/10.1016/j.clinthera.2016.01.004>.
 54. Lin JK, Lerman BJ, Barnes JJ, et al. Cost effectiveness of chimeric antigen receptor T-cell therapy in relapsed or refractory pediatric B-cell acute lymphoblastic leukemia. *J Clin Oncol.* 2018;36(32):3192–202.
 55. Sarkar RR, Gloude NJ, Schiff D, Murphy JD. Cost-effectiveness of chimeric antigen receptor t-cell therapy in pediatric relapsed/refractory B-cell acute lymphoblastic leukemia. *J Natl Cancer Inst.* 2019;111(7):719–26.
 56. Furzer J, Gupta S, Nathan PC, et al. Cost-effectiveness of tisagenlecleucel vs standard care in high-risk relapsed pediatric acute lymphoblastic leukemia in Canada. *JAMA Oncol.* 2020;6(3):393–401.
 57. Hettle R, Corbett M, Hinde S, et al. The assessment and appraisal of regenerative medicines and cell therapy products: an exploration of methods for review, economic evaluation and appraisal. *Health Technol Assess.* 2017;21(7):1–204.
 58. Lin JK, Muffly LS, Spinner MA, Barnes JJ, Owens DK, Goldhaber-Fiebert JD. Cost effectiveness of chimeric antigen receptor T-cell therapy in multiply relapsed or refractory adult large B-cell lymphoma. *J Clin Oncol.* 2019;37(24):2105–19.
 59. Carlson JJ, Chen S, Garrison LP Jr. Performance-based risk-sharing arrangements: an updated international review. *Pharmacoeconomics.* 2017;35(10):1063–72. <https://doi.org/10.1007/s40273-017-0535-z>.
 60. Jørgensen J, Kefalas P. Upgrading the SACT dataset and EBMT registry to enable outcomes-based reimbursement in oncology in England: a gap analysis and top-level cost estimate. *J Mark Access Health Policy.* 2019;7(1):1635842. <https://doi.org/10.1080/20016689.2019.1635842>.
 61. Garrison LP Jr, Carlson JJ, Bajaj PS, et al. Private sector risk-sharing agreements in the United States: trends, barriers, and prospects. *Am J Manag Care.* 2015;21(9):632–40.