



Corrigendum: Targeting ACLY Attenuates Tumor Growth and Acquired Cisplatin Resistance in Ovarian Cancer by Inhibiting the PI3K–AKT Pathway and Activating the AMPK–ROS Pathway

Xuan Wei^{1,2,3}, Juanjuan Shi⁴, Qianhan Lin^{1,2,3}, Xiaoxue Ma^{1,2,3}, Yingxin Pang^{1,2,3}, Hongluan Mao^{1,2,3}, Rui Li^{1,2,3}, Wei Lu^{1,2,3}, Yu Wang^{1,2,3*} and Peishu Liu^{1,2,3*}

¹ Department of Obstetrics and Gynecology, Qilu Hospital of Shandong University, Jinan, China, ² Key Laboratory of Gynecology Oncology of Shandong Province, Qilu Hospital of Shandong University, Jinan, China, ³ Shandong Engineering Laboratory for Urogynecology, Qilu Hospital of Shandong University, Jinan, China, ⁴ Department of Gynecology and Obstetrics, Affiliated Tengzhou Center People's Hospital of Jining Medical University, Tengzhou, China

OPEN ACCESS

Edited and reviewed by:

Haifeng Qiu,
Zhengzhou University, China

*Correspondence:

Peishu Liu
peishuliu@126.com
Yu Wang
yuerjade@163.com

Specialty section:

This article was submitted to
Gynecological Oncology,
a section of the journal
Frontiers in Oncology

Received: 16 July 2021

Accepted: 20 August 2021

Published: 07 September 2021

Citation:

Wei X, Shi J, Lin Q, Ma X, Pang Y,
Mao H, Li R, Lu W, Wang Y and
Liu P (2021) Corrigendum: Targeting
ACLY Attenuates Tumor Growth
and Acquired Cisplatin Resistance
in Ovarian Cancer by Inhibiting the
PI3K–AKT Pathway and Activating
the AMPK–ROS Pathway.
Front. Oncol. 11:742374.
doi: 10.3389/fonc.2021.742374

Keywords: ACLY, ovarian cancer, cisplatin resistance, PI3K–AKT pathway, AMPK–ROS pathway

A Corrigendum on

Targeting ACLY Attenuates Tumor Growth and Acquired Cisplatin Resistance in Ovarian Cancer by Inhibiting the PI3K–AKT Pathway and Activating the AMPK–ROS Pathway

By Wei X, Shi J, Lin Q, Ma X, Pang Y, Mao H, Li R, Lu W, Wang Y and Liu P (2021). *Front. Oncol.* 11:642229. doi: 10.3389/fonc.2021.642229

In the original article, there was a mistake in **Figure 5B** as published. We recognized by ourself that the picture of “PI3K” was the same as that of “pan-AKT”, we made a mistake when we dragged the original figure into the AI software.

The corrected **Figure 5B** appears below.

The authors apologize for this error and state that this does not change the scientific conclusions of the article in any way.

Publisher’s Note: All claims expressed in this article are solely those of the authors and do not necessarily represent those of their affiliated organizations, or those of the publisher, the editors and the reviewers. Any product that may be evaluated in this article, or claim that may be made by its manufacturer, is not guaranteed or endorsed by the publisher.

Copyright © 2021 Wei, Shi, Lin, Ma, Pang, Mao, Li, Lu, Wang and Liu. This is an open-access article distributed under the terms of the Creative Commons Attribution License (CC BY). The use, distribution or reproduction in other forums is permitted, provided the original author(s) and the copyright owner(s) are credited and that the original publication in this journal is cited, in accordance with accepted academic practice. No use, distribution or reproduction is permitted which does not comply with these terms.

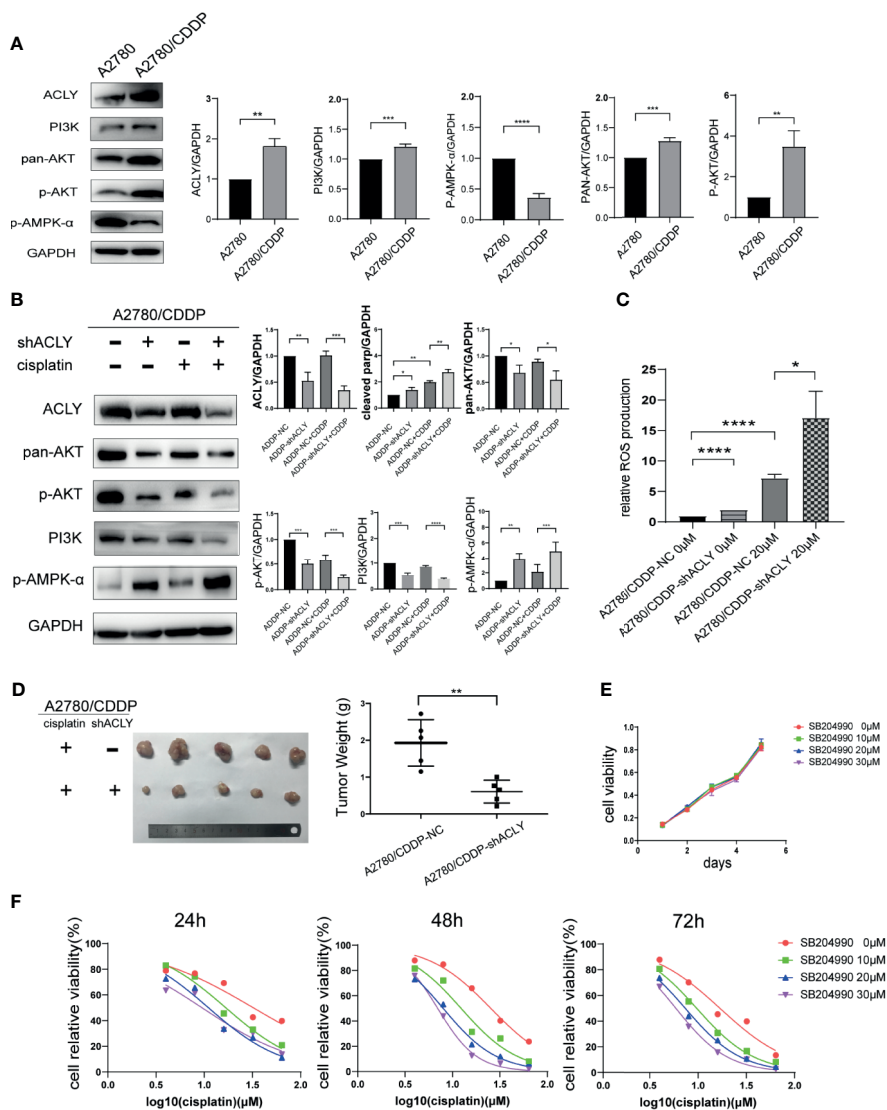


FIGURE 5 | ACLY knockdown inhibited PI3K/AKT pathway and activated AMPK pathway. **(A)** Western blotting was used to detect the differential expression of ACLY, PI3K/AKT pathway and p-AMPK-α in A2780 and A2780/CDDP cells. **(B)** Western blotting on A2780/CDDP-NC and A2780/CDDP-shACLY cells, and them under 20μM cisplatin treatment for 48 h, the bands were quantified and analyzed. The bands were quantitated with Image J software, statistical analysis was performed using Student's t-test. **(C)** ROS production of the aforementioned cells and them under treatment of 20μM cisplatin for 48 h, statistical analysis was performed using Student's t-test. **(D)** Tumor xenograft formation of A2780/CDDP-NC and A2780/CDDP-shACLY cells with treatment of cisplatin, with each group containing five mice. The difference in tumor weights was compared using Student's t-test. **(E)** Proliferation of A2780/CDDP cells in respond to different concentration (low-dose, 10–30μM) of SB-204990, the growth curves were analyzed using one-way ANOVA test. **(F)** 24, 48, and 72 h IC50 of A2780/CDDP cells under treatment of cisplatin combined with different concentration of SB-204990 (from 0 to 30μM), 24 h IC50 of which were 32.34 (26.71–40.60), 16.75 (15.24–18.43), 11.08 (9.736–12.55), 9.495 (7.759–11.38) μM, respectively; 48 h IC50 of which were 25.37 (23.86–27.00), 12.33 (10.74–14.13), 7.983 (7.487–8.499), 6.979 (6.749–7.215) μM; 72 h IC50 of which were 16.96 (14.89–19.34), 9.727 (9.294–10.18), 7.407 (7.083–7.741), 5.922 (5.601–6.246) μM, respectively. All cell experiments were repeated three times at least. **P* < 0.05, ***P* < 0.01, ****P* < 0.001, and *****P* < 0.0001 for statistical analysis of the indicated groups.