

Cytometry-based single-cell analysis of intact epithelial signaling reveals MAPK activation divergent from TNF- α -induced apoptosis *in vivo*

Alan J Simmons, Amrita Banerjee, Eliot T McKinley, Cherie' R Scurrah, Charles A Herring, Leslie S Gewin, Ryota Masuzaki, Seth J Karp, Jeffrey L Franklin, Michael J Gerdes, Jonathan M Irish, Robert J Coffey & Ken S Lau

Correction to: *Mol Syst Biol* (2015) 11: 835. DOI 10.15252/msb.20156282 | Published online 30 October 2015

Since the publication of the above manuscript, the authors have noticed that in Figure 3, Appendix Figure S7, and Appendix Figure S10, the colors described in the legend box were reversed (green should indicate ileum and magenta duodenum, like in the

other figures in the paper). Moreover, the description of the colors corresponding to the two tissue types was omitted in Appendix Figure S4. The updated figures are provided below. The authors apologize for these errors.

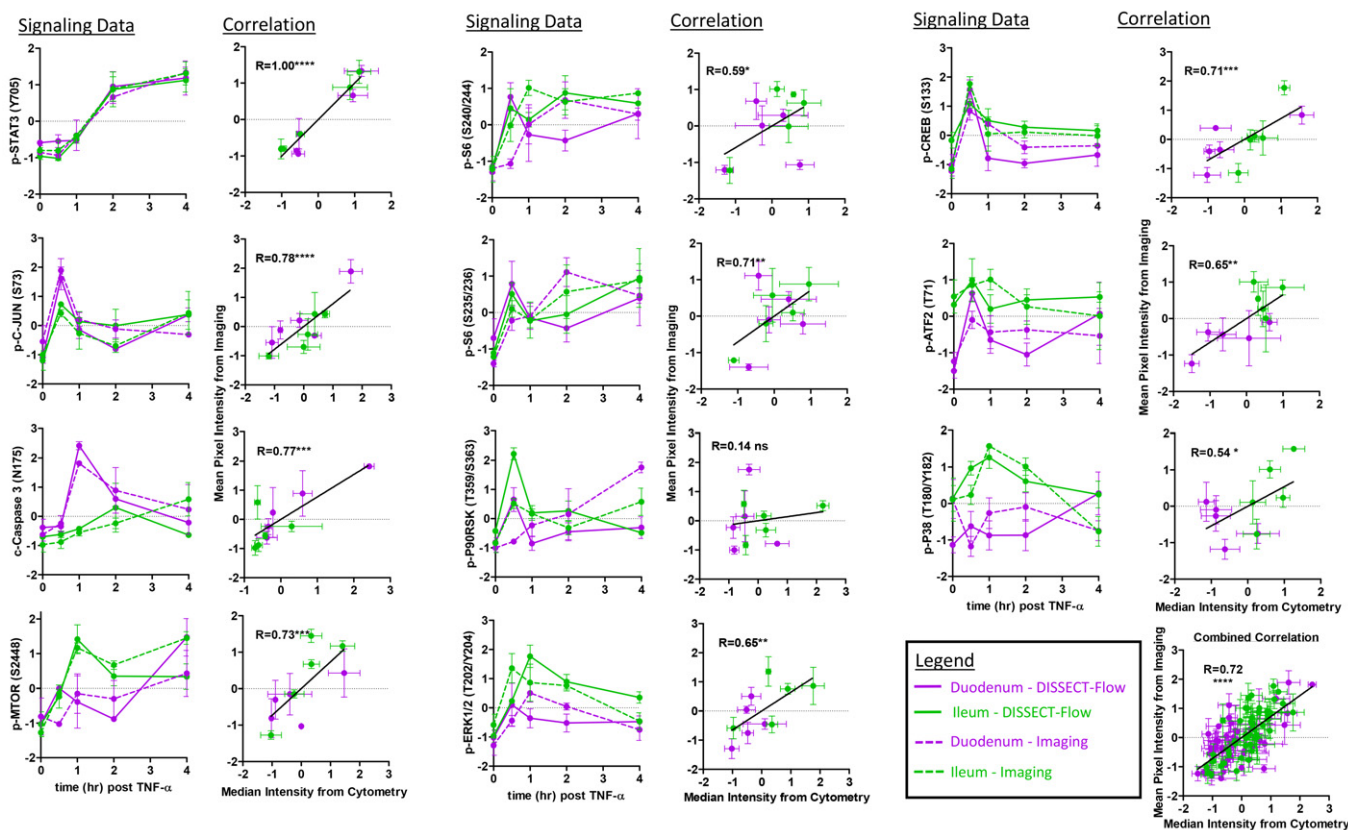
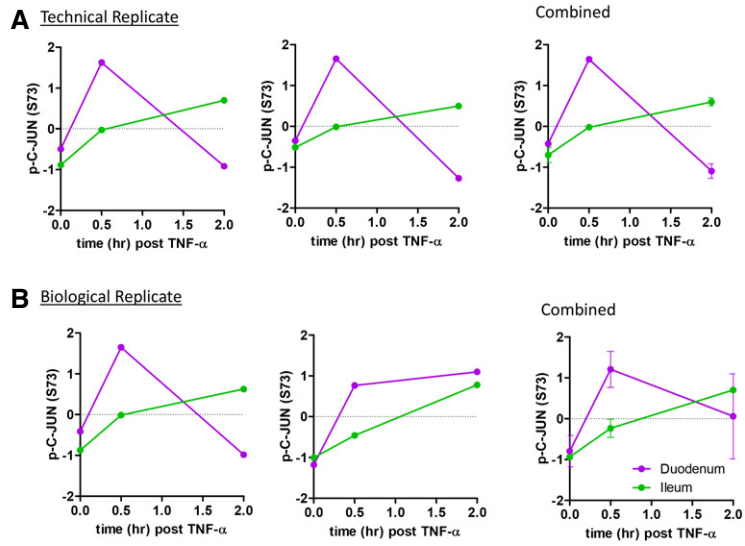
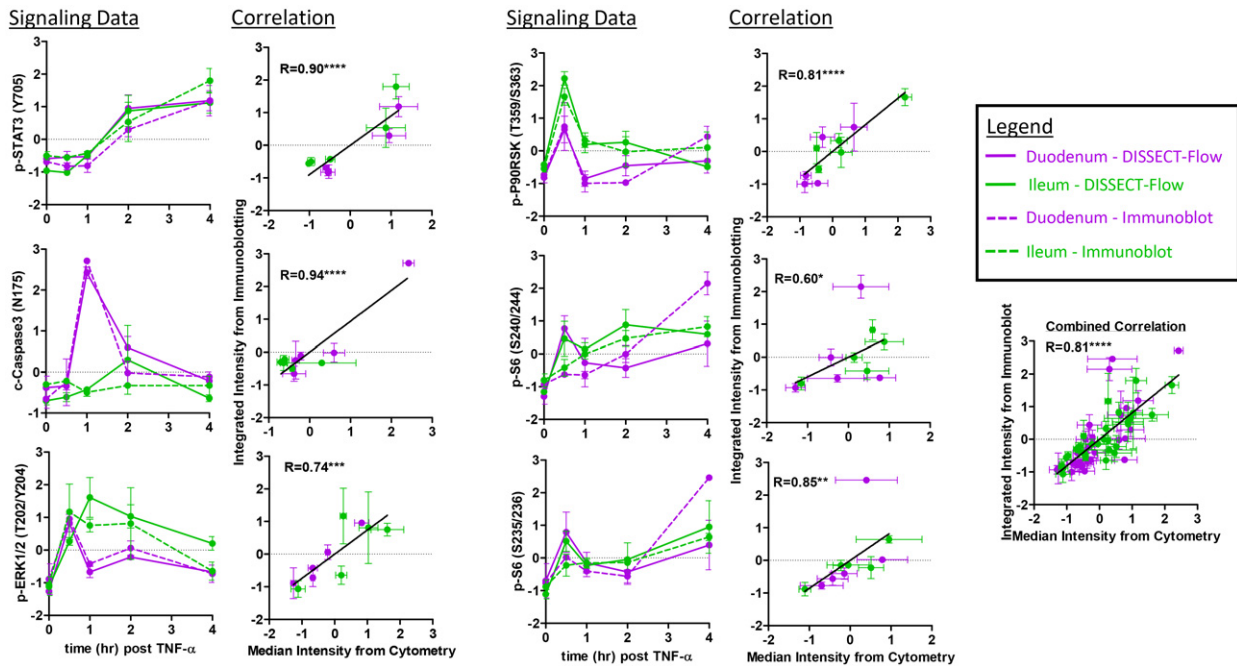


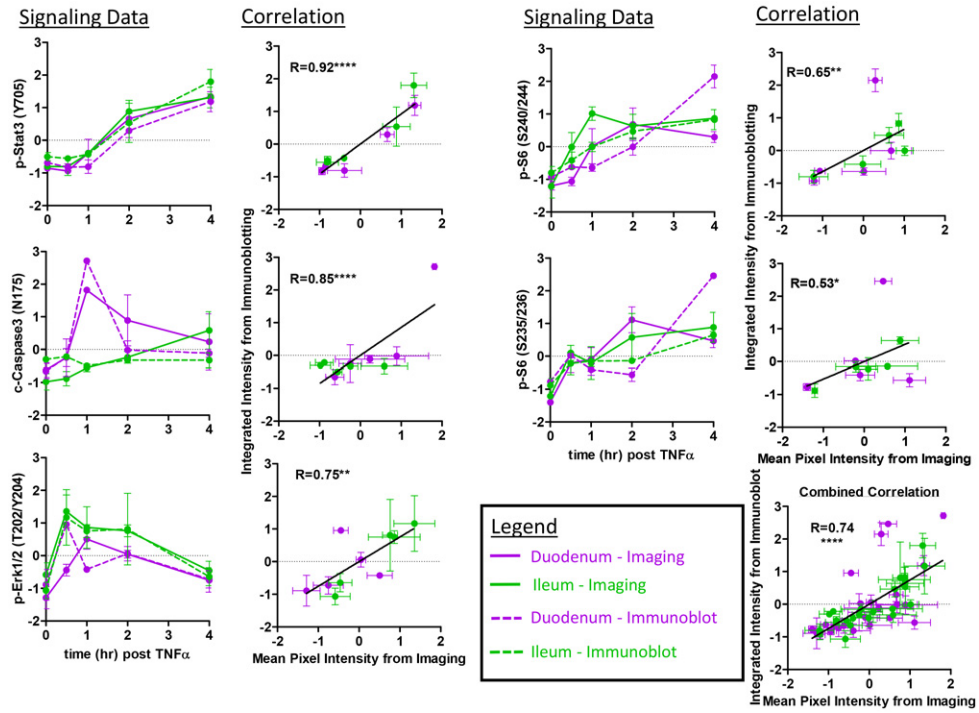
Figure 3.



Appendix Figure S4.



Appendix Figure S7.



Appendix Figure S10.