

SCIENTIFIC REPORTS



OPEN

Rapid genomic changes in allopolyploids of *Carassius auratus red var.* (♀) × *Megalobrama amblycephala* (♂)

Received: 05 July 2016
Accepted: 13 September 2016
Published: 05 October 2016

Qinbo Qin, Zhengfa Lai, Liu Cao, Qiong Xiao, YuDe Wang & Shaojun Liu

To better understand genomic changes in the early generations after polyploidisation, we examined the chromosomal consequences of genomic merger in allotetraploid hybrids ($4nF_1$) (AABB, $4n = 148$) of *Carassius auratus red var.* (RCC) (AA, $2n = 100$) (♀) × *Megalobrama amblycephala* (BSB) (BB, $2n = 48$) (♂). Complete loss of the paternal 5S rDNA sequence and the expected number of maternal chromosomal loci were found in $4nF_1$, suggesting directional genomic changes occurred in the first generations after polyploidisation. Recent studies have reported instability of newly established allotetraploid genomes. To assess this in the newly formed $4nF_1$ genome, we performed fluorescence *in situ* hybridisation on an allotetraploid gynogenetic hybrid ($4nG$) (AABB, $4n = 148$) and an allotetraploid hybrid ($5nH$) (AABBB, $5n = 172$) from $4nF_1$ (♀) × BSB (♂) with 5S rDNA gene and centromere probes from RCC, the original diploid parent. The expected numbers of maternal chromosomal loci were found in $4nG$, while chromosomal locus deletions and chromosome recombinations were detected in $5nH$. These observations suggest that abnormal meiosis did not lead to obvious genomic changes in the newly established allotetraploid genomes, but hybridisation with the original diploid parent resulted in obvious genomic changes in the newly established allotetraploid genomes, as was found for the maternal genome.

Polyploidisation is a significant evolutionary process that results in rapid speciation^{1–6}. Many diploids species are actually ancient polyploids that have undergone diploidisation. Recent studies, mostly in plants, suggested that allopolyploid formation could induce various types of genomic changes, including directional sequence elimination, random structural changes, and chromosome structure^{7–13}. Importantly, a variety of genomic changes has been shown to result in diploid-like chromosome pairing^{14–17}. Although the potential contribution of genomic changes to the evolutionary success of polyploidy has been widely recognised, virtually no information is available on how newly established genomes have evolved after polyploidisation.

Because sex determination and development are disrupted by polyploidisation, polyploid species are common in plants, but rarely successful in animals^{18–20}. In our previous study, fertile allotetraploid hybrids ($4nF_1$) (AABB, $4n = 148$) were successfully obtained in the first generation of *Carassius auratus red var.* (RCC) (AA, $2n = 100$, ♀) × *Megalobrama amblycephala* (BSB) (BB, $2n = 48$, ♂) as a result of chromosome doubling of diploid hybrid embryos (AB, $2n = 74$) by inhibition of the first cleavage²¹. Unexpectedly, abnormal chromosome behaviour during meiosis, but not bivalent pairing, occurred in $4nF_1$ and resulted in a generation of gametes with different genetic compositions, including allotetraploid (AABB), autotriploid (AAA), and autodiploid (AA) gametes^{22,23}. Thus, we obtained autotetraploids (AAAA, $4n = 200$) in the self-cross progenies of $4nF_1$, and allotetraploid hybrids ($5nH$) (AABBB, $5n = 172$) in backcross progenies of $4nF_1$ (♀) × BSB (♂)^{21,24}. In addition, gynogenetic allotetraploids ($4nG$) (AABB, $4n = 148$) were obtained by artificial gynogenesis from eggs of the $4nF_1$ that were activated with UV-treated sperm of BSB, but not subject to treatment for doubling the chromosome number²². Because the progenitors for these allopolyploids are known, we can precisely determine the timing and processes of genomic changes after polyploidisation. Thus, these allopolyploids provide a model system to study early chromosomal evolution after polyploidisation.

Key Laboratory of Protein Chemistry and Fish Developmental Biology of Education Ministry of China, College of Life Sciences, Hunan Normal University, Changsha 410081, China. Correspondence and requests for materials should be addressed to S.L. (email: lsj@hunnu.edu.cn)

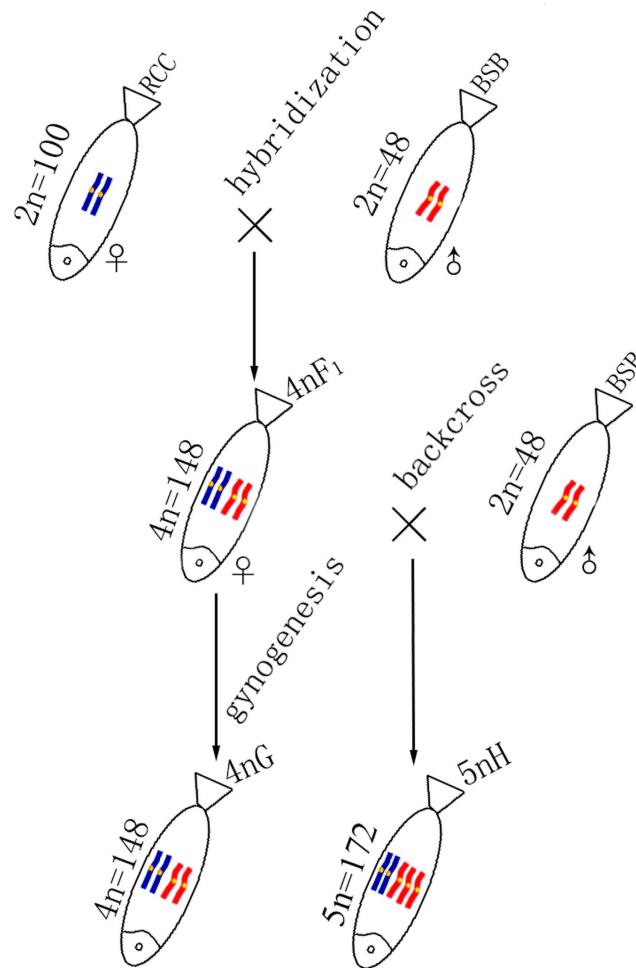


Figure 1. Formation of experimental fish hybrids. The parental origin of chromosomes is marked by blue and red. RCC, *Carassius auratus red var.*; BSB, *Megalobrama amblycephala*; 4nF₁, allotetraploid hybrid; 4nG, allotetraploid gynogenetic hybrid; 5nH, allopolyploid hybrid.

Cytogenetics studies using fluorescence *in situ* hybridisation (FISH) have reported chromosomal changes in many polyploid species^{25–29}. To further understand allopolyploid genome evolution in a broad context, we used the first generation 4nF₁ hybrids and their backcross progenies to explore potential genomic changes on polyploidisation. We determined the response of two dispersed chromosomal loci (5S rDNA and centromere) that may be particularly important for *de novo* allopolyploidy, because they are likely to be most vulnerable to genetic changes after polyploidisation and (or) hybridisation^{29–31}. Our results revealed rapid genomic changes occurred in the first generations after polyploidisation, and indicated instability of the newly established allotetraploid genome. The findings of this study provide new insights into chromosomal evolution in vertebrates.

Results

Organisation of 5S rDNA unit. Formation and genetic composition of experimental fish is shown in Fig. 1. DNA fragments were amplified from BSB, RCC, 4nF₁, 4nG, and 5nH using the 5SP1 and 5SP2R primers. Agarose gel electrophoresis identified three PCR fragments (approximately 200, 340, and 500 bp) from RCC, two PCR fragments (approximately 200 and 370 bp) from BSB, and four PCR fragments (approximately 200, 340, 400, and 500 bp) from each of 4nF₁, 4nG, and 5nH (Fig. 2).

A total of 340 clones were sequenced to examine the different patterns of the 5S rDNA sequences; 60 clones were from RCC, 40 clones were from BSB, and 80 clones were from each of the 4nF₁, 4nG, and 5nH hybrids (Table 1). Based on the BLASTn analysis, all the sequences from all five hybrids were confirmed as 5S rDNA repeat units. The 5S rDNA sequences from RCC fell into three distinct families (designated class I: 203 bp; class II: 340 bp; and class III: 477 bp), while the 5S rDNA sequences from BSB formed one family (designated class IV: 188 bp). All three RCC-derived families (class I, class II and class III) were detected in 4nF₁ and 4nG, while the BSB-derived family (class IV) was not found in 4nF₁ and 4nG. All four classes were detected in 5nH (Table 1).

Southern blot hybridisation. Genomic DNA from RCC, BSB and 4nF₁ was digested with *Hind*III and *Sca*I. Southern hybridisation was performed using the 5S rDNA sequence from BSB as a probe. This probe

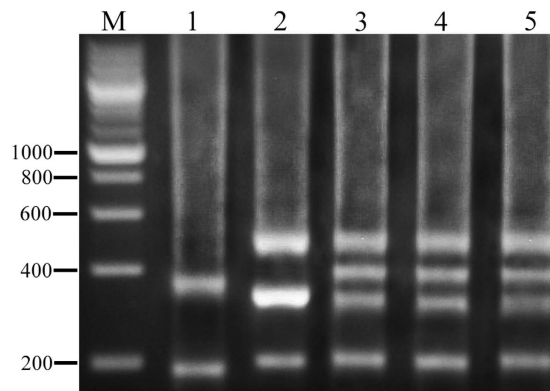


Figure 2. DNA fragments amplified from RCC, BSB, 4nF₁, 4nG, and 5nH. M, DNA ladder markers (200-bp increments); lane 1, DNA from BSB; lane 2, DNA from RCC; lane 3, DNA from 4nF₁; lane 4, DNA from 4nG; lane 5, DNA from 5nH. RCC, *Carassius auratus red var.*; BSB, *Megalobrama amblycephala*; 4nF₁, allotetraploid hybrid; 4nG, allotetraploid gynogenetic hybrid; 5nH, allopolyploid hybrid.

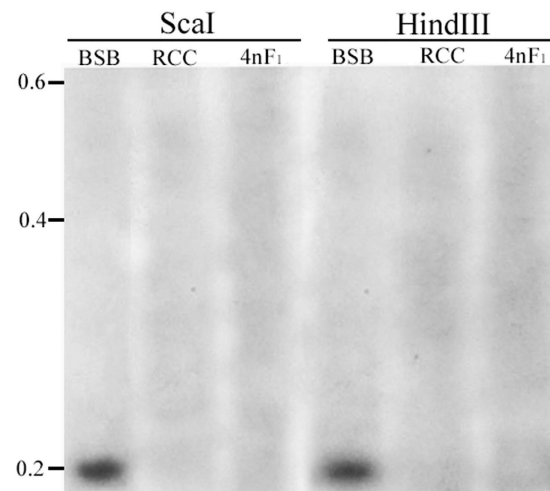


Figure 3. Southern blot hybridisation with the 5S rDNA sequence from BSB as a probe. *HindIII* and *ScaI* were used to digest the genomic DNA of BSB, RCC, and 4nF₁. Positive hybridisation was detected in the genomic DNA of BSB, but not in the genomic DNA of RCC and the 4nF₁ hybrid. Molecular weight makers (kb) are shown on the left. BSB, *Megalobrama amblycephala*; RCC, *Carassius auratus red var.*; 4nF₁, allotetraploid hybrid.

Fish type ^a	No. of sequenced clones	Type of 5S rDNA units			
		class I (203 bp)	class II (340 bp)	class III (477 bp)	class IV (188 bp)
RCC	60	+	+	+	–
BSB	40	–	–	–	+
4nF ₁	80	+	+	+	–
4nG	80	+	+	+	–
5nH	80	+	+	+	+

Table 1. Organisation of 5S rDNA units in five fish types. ^aRCC, *Carassius auratus red var.*; BSB, *Megalobrama amblycephala*; 4nF₁, allotetraploid hybrid; 4nG, allotetraploid gynogenetic hybrid; 5nH, allopolyploid hybrid.

hybridised with the genomic DNA from BSB, but not with the genomic DNA from RCC and 4nF₁ (Fig. 3). This result implies that the paternal 5S rDNA cluster is completely deleted in 4nF₁.

Fluorescence *in situ* hybridisation. FISH hybridisation of the RCC-derived class I (203 bp, GenBank: GQ485555) 5S rDNA gene probe to the RCC and BSB metaphase chromosomes yielded eight 5S rDNA gene loci in RCC (Fig. 4A; Table 2), but none in BSB (Table 2). It was expected that the eight 5S rDNA loci will also

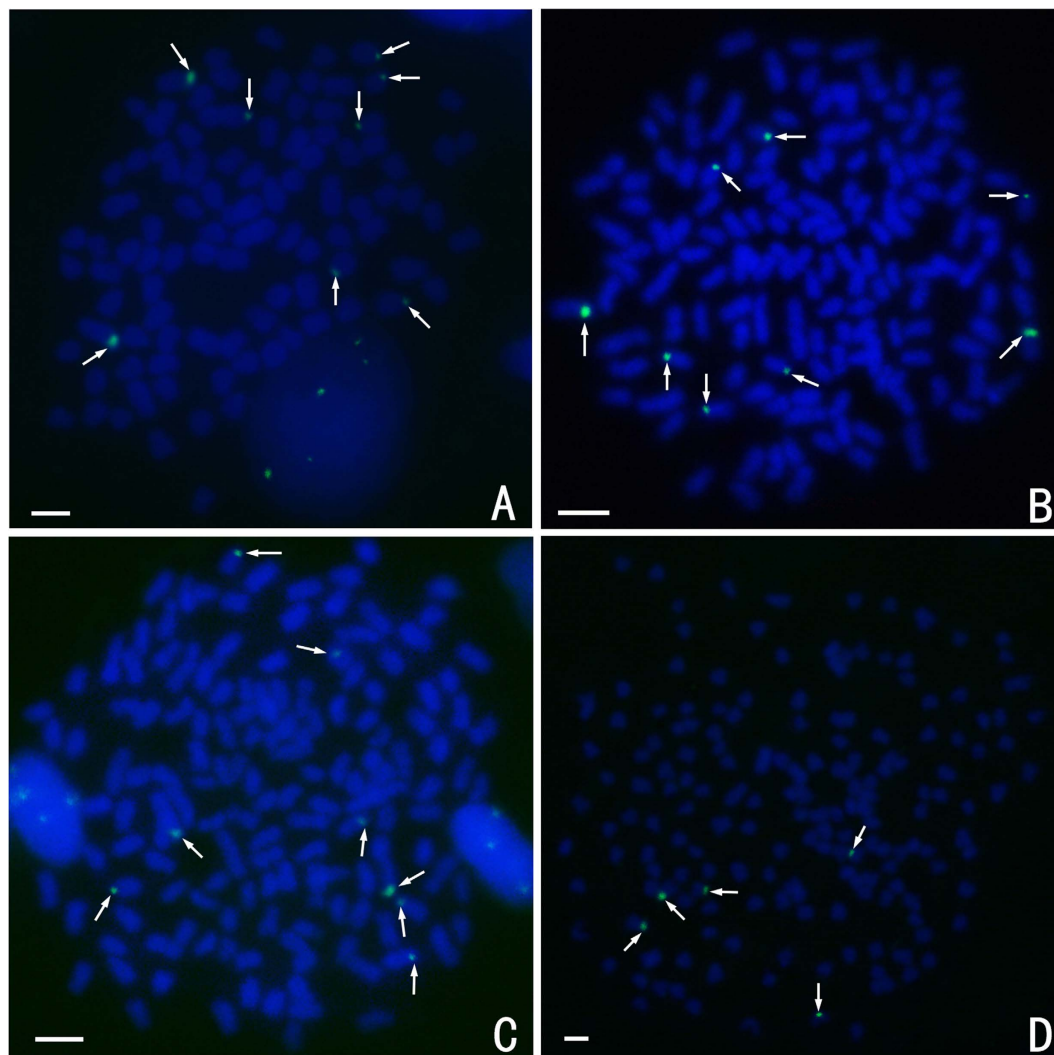


Figure 4. FISH hybridisation signals in the metaphase chromosomes of RCC, 4 nF₁, 4 nG, and 5 nH with class I (203 bp) 5S rDNA as a probe. The white arrows indicate the 5S rDNA gene loci. The eight 5S rDNA gene loci in RCC (A), 4 nF₁ (B), and 4 nG (C), and the five 5S rDNA gene loci in 5 nH (D) are shown. Bars in (A–D): 3 μm. RCC, *Carassius auratus red var.*; 4 nF₁, allotetraploid hybrid; 4 nG, allotetraploid gynogenetic hybrid; 5 nH, allopolyploid hybrid.

Fish type ^a	No. of Fish	No. of metaphase	203 bp	263 bp	477 bp	304 bp	
			No. of loci	No. of loci	No. of loci	No. of big loci	No. of small loci
RCC	10	200	8	100	8	2	2
BSB	10	200	0	100	0	0	0
4 nF ₁	10	200	8	100	8	2	2
4 nG	10	200	8	100	8	2	2
5 nH	10	200	4–5	65–70	8	2	2

Table 2. Examination of hybridising signals by FISH in five fish types. ^aRCC, *Carassius auratus red var.*; BSB, *Megalobrama amblycephala*; 4 nF₁, allotetraploid hybrid; 4 nG, allotetraploid gynogenetic hybrid; 5 nH, allopolyploid hybrid.

be present in the 4 nF₁, 4 nG, and 5 nH hybrids because they were derived from RCC. However, we found that, while all eight 5S rDNA gene loci detected in the metaphase chromosomes of 4 nF₁ and 4 nG and were similar to the eight RCC loci (Fig. 4B,C; Table 2), only five of the 5S rDNA gene loci were detected in the 5 nH metaphase chromosomes (Fig. 4D; Table 2).

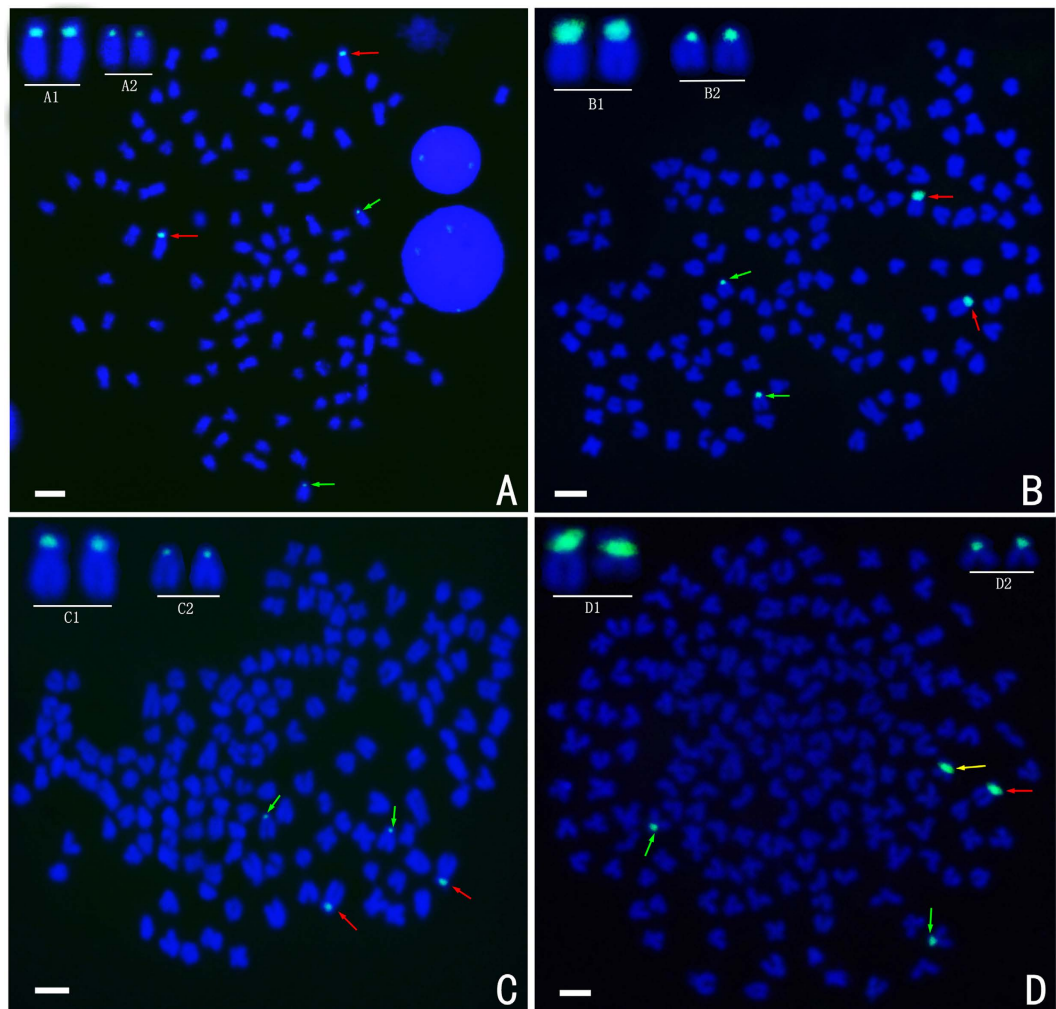


Figure 5. FISH hybridisation signals in the metaphase chromosomes of RCC, 4nF₁, 4nG, and 5nH with class II (340 bp) 5S rDNA as a probe. The red arrows indicate the large 5S rDNA gene loci and the green arrows indicate the small 5S rDNA gene loci. The two big and two small 5S rDNA gene loci in RCC (A), 4nF₁ (B), and 4nG (C) are shown. A1 in (A) B1 in (B) and C1 in (C) indicate that the large 5S rDNA gene loci were located on homologous submetacentric chromosomes. A2 in (A) B2 in (B) and C2 in (C) indicate that the small 5S rDNA gene loci were located on homologous subtelo-centric chromosomes. (D) The two large 5S rDNA gene loci (red and yellow arrows) and two small 5S rDNA gene loci (green arrows) in 5nH are shown. D1 indicates that the large 5S rDNA gene loci were located on a submetacentric chromosome (red) and a metacentric chromosome (yellow). D2 indicates that the small 5S gene loci were located on homologous subtelo-centric chromosomes; Bars in (A–D) 3 μm. RCC, *Carassius auratus red var.*; 4nF₁, allotetraploid hybrid; 4nG, allotetraploid gynogenetic hybrid; 5nH, allo-pentaploid hybrid.

FISH hybridisation of the class II (340 bp, GenBank: GQ485556) 5S rDNA gene probe to the RCC and BSB metaphase chromosomes yield four 5S rDNA gene loci in RCC (Fig. 5A; Table 2), but none in BSB (Table 2). The chromosomal locus map for RCC revealed two large 5S rDNA gene loci on homologous submetacentric chromosomes, and two small 5S rDNA gene loci on homologous subtelo-centric chromosomes (Fig. 5A). Similarly, as expected, two large and two small 5S rDNA gene loci were found on homologous submetacentric chromosomes and homologous subtelo-centric chromosomes, respectively, in 4nF₁ (Fig. 5B) and 4nG (Fig. 5C). Unexpectedly, in 5nH, one large 5S rDNA gene locus was located on a submetacentric chromosome and another was located on a metacentric chromosome (Fig. 5D), suggesting that these two large 5S rDNA gene loci were not located on homologous chromosomes.

FISH hybridisation of the class III (477 bp, GenBank: GQ485557) 5S rDNA gene probe to the RCC and BSB metaphase chromosomes yield eight 5S gene loci in RCC (Fig. 6A; Table 2), but none in BSB (Table 2). As expected, the eight RCC-derived 5S rDNA gene loci were detected in the metaphase chromosomes of 4nF₁, 4nG and 5nH and were similar to the loci in RCC (Fig. 6B–D; Table 2).

The RCC-derived centromere probe (GenBank: JQ086761) hybridised to 100 chromosomes in RCC (Fig. 7D), but none in BSB (Table 2). This species-specific centromere probe also hybridised to 100 metaphase chromosomes

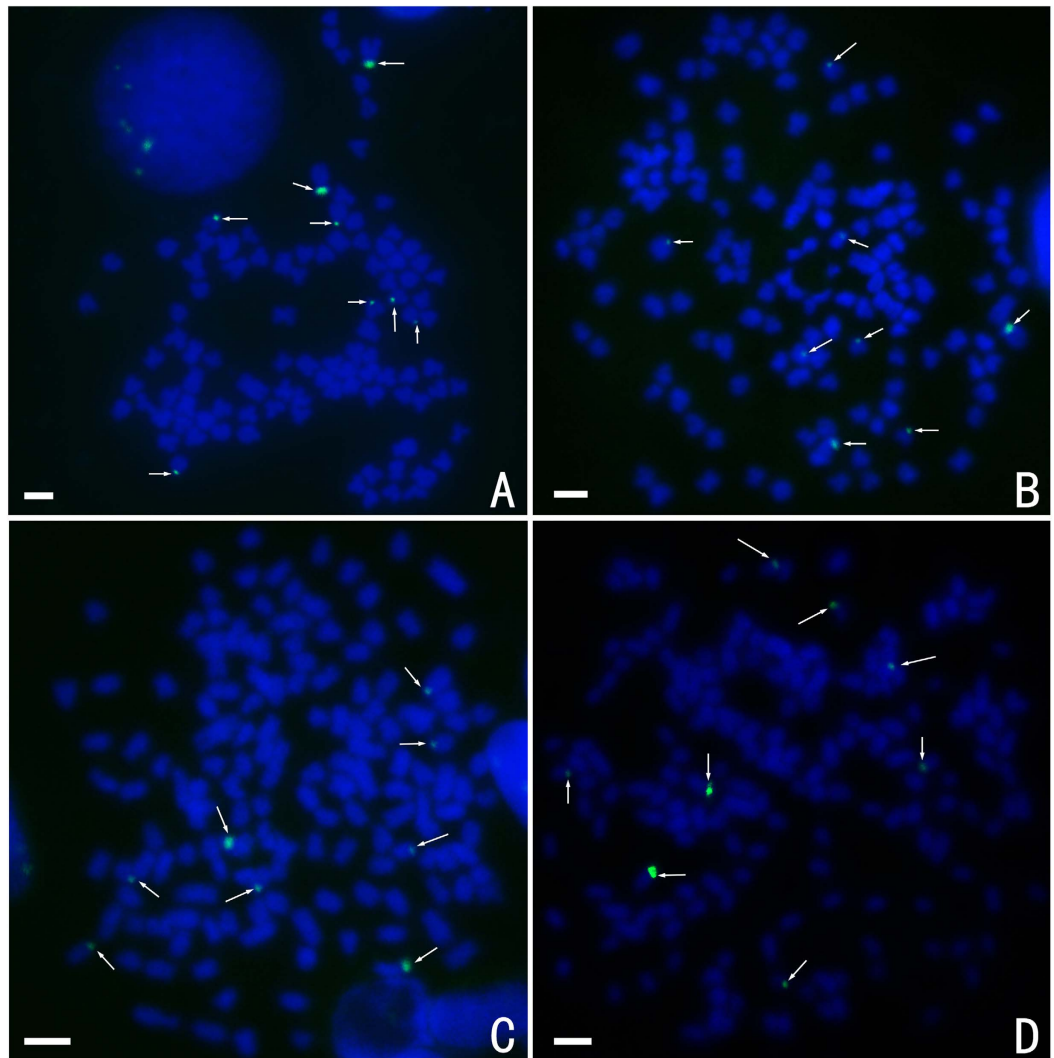


Figure 6. FISH hybridisation signals in the metaphase chromosomes of RCC, 4nF₁, 4nG, and 5nH with class III (477 bp) 5S rDNA as a probe. The white arrows indicate the 5S rDNA gene loci. The eight 5S gene loci in RCC (A), 4nF₁ (B), 4nG (C), and 5nH (D) are shown. Bars in (A–D): 3 μm. RCC, *Carassius auratus red var.*; 4nF₁, allotetraploid hybrid; 4nG, allotetraploid gynogenetic hybrid; 5nH, allopolyploid hybrid.

in 4nF₁ and 4nG, as expected, but only about 65 to 70 RCC-derived centromere loci were detected in 5nH metaphase chromosomes, rather than the expected 100 loci.

Discussion

Polyplodisation may increase genomic variation rates and is important for the formation in new polyplod species⁴. Evidence for genomic variations, including fragment loss, chromosomal rearrangement, and rDNA loci changes have been reported in both synthesised polyplod^{7,27,32} and natural polyplod species^{25,26}. Genomic variations usually occur in the early generations after polyplodisation, possibly reflecting instability in newly established polyplod genomes^{26,27}. The results of the present study support previous observations that genomic changes occur in newly established polyplod genomes, and reveal that these changes can begin as early as the first generation after polyplodisation.

Because of incompatibility between homeologous chromosomes, hybridization can boost genomic change^{33,34}. The frequency of genomic change has been associated with divergence of the diploid parental genomes⁷. The 4nF₁ hybrid was formed by combining the two diploid genomes from RCC and BSB, two fish species in the family *Cyprinidae*, that belonged to different subfamilies (*Cyprininae* and *Cultrinae*)²¹, implying RCC and BSB are genetically distinct. In 4nF₁, not only was the paternal 5S rDNA unit deleted entirely, but so were the paternal *sox*^{21,35} and *hox* (unpublished data) gene families, suggesting that a large number of genomic changes had occurred in the newly established allotetraploid genome. A variety of genomic changes can result in diploid-like chromosome pairing, which has been reported to prevent meiotic irregularities and improve the efficiency of gamete production in polyplod species^{16,36}. However, there is still no direct evidence that large numbers of genomic variations or unstable individuals are selected for during the establishment of polyplod species^{27,37–39}. In previous study,

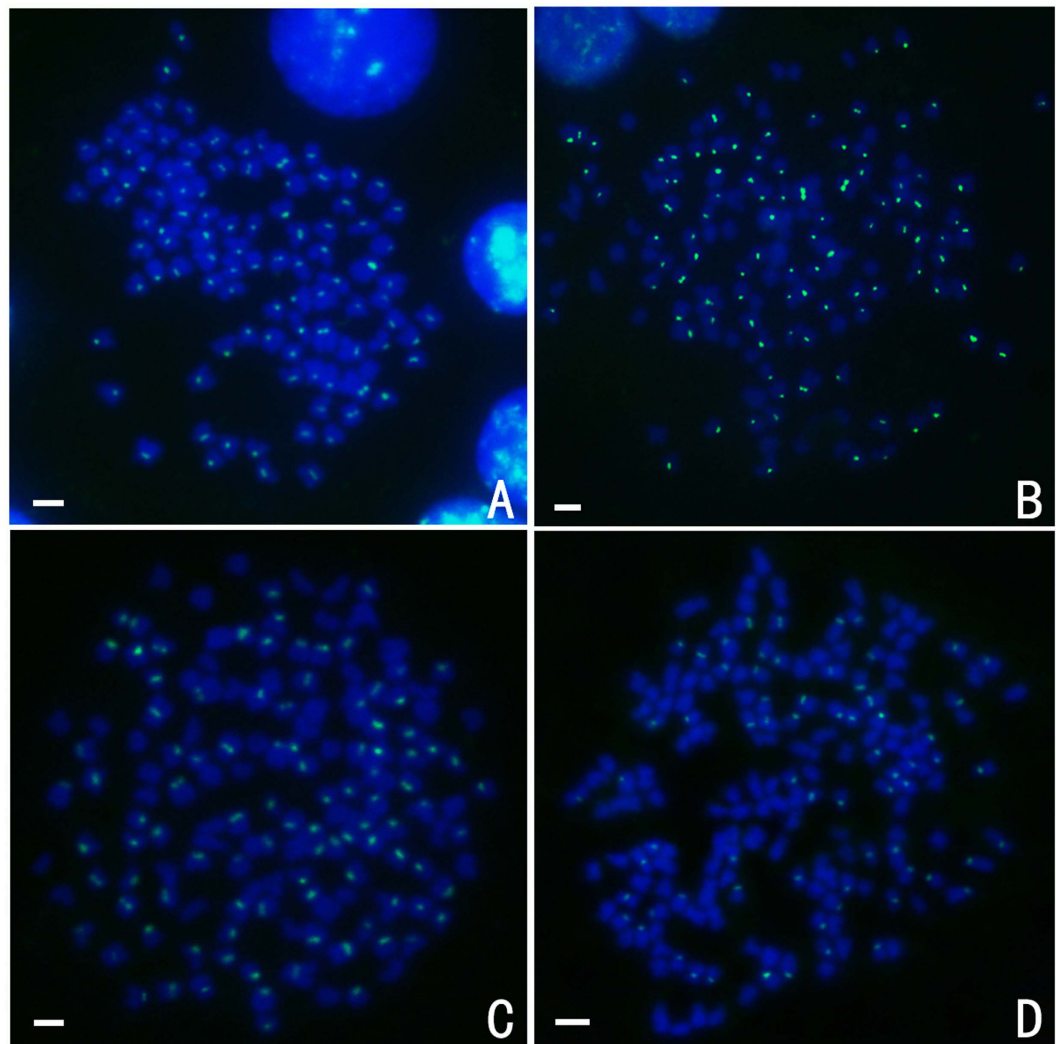


Figure 7. FISH hybridisation signals in the metaphase chromosomes of RCC, 4nF₁, 4nG, and 5nH with the centromere probe. The centromere probe hybridised to 100 chromosomes in RCC (A), 4nF₁ (B), and 4nG (C), and to 69 chromosomes in 5nH (D). Bars in (A–D): 3 μm. RCC, *Carassius auratus red var.*; 4nF₁, allotetraploid hybrid; 4nG, allotetraploid gynogenetic hybrid; 5nH, allopolyploid hybrid.

we found that diploid-like chromosome pairing was not restored in 4nF₁^{22,23}. We speculated that mass deletion of paternal genetic material gave rise to excessive genomic modification in 4nF₁, which prevented diploid-like chromosome pairing, and resulted in weak fertility and the generation of gametes with a different genetic composition. To avoid extinction, the unstable 4nF₁ individuals may have entered a novel evolutionary trajectory by abnormal meiosis, and produced diploid gamete with two sets of RCC-derived chromosomes. Thus, unexpectedly, we obtained better fertile autotetraploids among the progenies of 4nF₁, and successfully established an autotetraploid fish line (F₂–F₉)²⁴.

In some cases, it has been shown that hybridization had more effect on the change in genomic and gene expression than polyploidization^{40,41}. In our study, 4nG result from genome doubling of germ cell, 5nH was obtained by hybridization of 4nF₁ (♀) × BSB. Thus, the 5S rDNA units and chromosomal loci (5S rDNA and centromere) remained intact in the 4nG genome, but obvious variations were found in 5nH. In addition, our data also revealed the elimination of the entire paternal 5S rDNA unit, and stabilisation of the maternal 5S rDNA units and chromosomal loci in the allotetraploid hybrids, implying that the paternal genome underwent greater polyploidisation-associated modifications than the maternal genome. Similar findings have been reported in polyploid plants^{30,42,43}. The nucleo-cytoplasmic hypothesis might be an explanation for the apparent paternal genome lability. This hypothesis predicts that the paternal genome of a newly formed allopolyploid evolves most rapidly because the maternal cytoplasmic background leads to paternal genome instabilities⁷. However in 5nH, the newly established maternal allotetraploid genome showed obvious variations in chromosomal loci, while the parental 5S rDNA units remained intact, suggesting that the maternal genome was more unstable than the parental genome. These results are opposite to those predicted by the nucleo-cytoplasmic hypothesis. We speculate that the genetic variations in the maternal chromosomal loci may be attributed to instability of the newly established

allotetraploid genome. Further, the newly established allotetraploid genome consists of the BSB-derived genome, which may hinder or reduce the influence of the cytoplasmic background on the instability of the BSB-derived paternal genome.

Methods

Animals and crosses. All experiments, performed from 2012–2015, were approved by the Animal Care Committee of Hunan Normal University. The Administration of Affairs Concerning Animal Experimentation guidelines stated approval from the Science and Technology Bureau of China. The methods were carried out in accordance with the approved guidelines. Experimental individuals were fed in a pool with suitable illumination, water temperature, dissolved oxygen content, and adequate forage in the Engineering Center of Polyploidy Fish Breeding of the National Education Ministry located at Hunan Normal University, China. Approval from the Department of Wildlife Administration is not required for the experiments conducted in this paper. Fish were deeply anesthetized with 100 mg/L MS-222 (Sigma-Aldrich) before dissection.

The 4nF₁ hybrids (AABB, 4n = 148) of RCC (AA, 2n = 100, ♀) × BSB (BB, 2n = 48, ♂) were produced during the reproductive seasons (April to June) in 2012, 2013, and 2014. During the reproductive season of 2014, the gynogenetic allotetraploid hybrids (4nG) (AABB, 4n = 148) were obtained by artificial gynogenesis from the eggs of the 4nF₁ that were activated with UV-treated sperm of BSB without treatment for doubling the chromosomes. During the reproductive season of 2015, 5nH (AABBB, 5n = 172) was obtained in backcross progenies of 4nF₁ (♀) × BSB (♂).

PCR amplification and sequencing. One pair of primers (5SP1: 5'-GCTATGCCCGATCTCGT CTGA-3' and 5SP2R: 5'-CAGGTTGGTATGGCCGTAAGC-3') was designed and synthesised to amplify the 5S rDNA repeats directly from genomic DNA by PCR. The PCR reactions and sequencing were performed as described by Qin *et al.*⁴⁴. Sequences were analysed using ClustalW software (<http://www.ebi.ac.uk/Tools/msa/clustalw2/>).

Southern blot hybridisation. Genomic DNA (10 mg) from all the samples from RCC, BSB and 4nF₁ was completely digested with the restriction endonucleases *Hind*III and *Sca*I, submitted to 0.8% agarose gel electrophoresis, and transferred onto Hybond-N1 membrane⁴⁵. The 5S rDNA sequences were labelled with Dig-11-dUTP (Roche), which was used as a probe, and hybridised with the filter-immobilised DNA. Hybrid signal detection was performed with a DIG detection kit II (Innogen, China).

Fluorescence *in situ* hybridisation. Chromosome preparation was carried out on the kidney tissues of all samples, according to the procedures reported by Liu *et al.*²¹ The FISH probes for the 5S gene and species-specific centromere were amplified by PCR using 5SP1 and 5SP2R primer, and the primer 5'-TTCGAAAAGAGAGAATAATCTA-3' and 5'-AACTCGTCTAAACCCGAACTA-3', respectively. The FISH probes were produced by Dig-11-dUTP labelling (using a nick translation kit; Roche, Germany) of the purified PCR products. FISH was performed according to the method described by He *et al.*⁴⁶ For each type of fish hybrid, 200 metaphase spreads (20 metaphase spreads in each sample) of the chromosomes were analysed.

References

- Masterson, J. Stomatal size in fossil plants: evidence for polyploidy in majority of angiosperms. *Science* **264**, 421–424 (1994).
- Comai, L. The advantages and disadvantages of being polyploid. *Nature reviews Genetics* **6**, 836–846 (2005).
- Rieseberg, L. H. & Willis, J. H. Plant speciation. *Science* **317**, 910–914 (2007).
- Otto, S. P. The evolutionary consequences of polyploidy. *Cell* **131**, 452–462 (2007).
- Mallet, J. Hybrid speciation. *Nature* **446**, 279–283 (2007).
- Wood, T. E. *et al.* The frequency of polyploid speciation in vascular plants. *Proc Natl Acad Sci USA* **106**, 13875–13879 (2009).
- Song, K. M. *et al.* Rapid genome change in synthetic polyploids of *Brassica* and its implications for polyploid evolution. *Proc Natl Acad Sci USA* **92**, 7719–7723 (1995).
- Chen, Z. J. & Pikaard, C. S. Transcriptional analysis of nucleolar dominance in polyploid plants: Biased expression/silencing of progenitor rRNA genes is developmentally regulated in *Brassica*. *Proc Natl Acad Sci USA* **94**, 3442–3447 (1997).
- Ozkan, H. *et al.* Allopolyploidy-induced rapid genome evolution in the wheat (*Aegilops-Triticum*) group. *Plant Cell* **13**, 1735–1747 (2001).
- Kashkush, K. *et al.* Transcriptional activation of retrotransposons alters the expression of adjacent genes in wheat. *Nat Genet* **33**, 102–106 (2003).
- Tate, J. A. *et al.* Evolution and expression of homeologous loci in *Tragopogon miscellus* (*Asteraceae*), a recent and reciprocally formed allopolyploid. *Genetics* **173**, 1599–1611 (2006).
- Leitch, A. R. & Leitch, I. J. Genomic plasticity and the diversity of polyploid plants. *Science* **320**, 481–483 (2008).
- Ha, M. *et al.* Small RNAs serve as a genetic buffer against genomic shock in *Arabidopsis* interspecific hybrids and allopolyploids. *Proc Natl Acad Sci USA* **106**, 17835–17840 (2009).
- Wendel, J. F. Genome evolution in polyploids. *Plant Mol Biol* **42**, 225–249 (2000).
- Wolfe, K. H. Yesterday's polyploids and the mystery of diploidization. *Nat Rev Genet* **2**, 333–341 (2001).
- Paterson, A. *et al.* Ancient polyploidization predating divergence of the cereals, and its consequences for comparative genomics. *Proc Natl Acad Sci USA* **101**, 9903–9908 (2004).
- Soltis, D. E. *et al.* Polyploidy and angiosperm diversification. *Am J Bot* **96**, 336–348 (2009).
- Luo, J. *et al.* Tempo and mode of recurrent polyploidization in the *Carassius auratus* species complex (*Cypriniformes*, *Cyprinidae*). *Heredity* **112**, 415–427 (2014).
- Li, X. Y. *et al.* Extra Microchromosomes Play Male Determination Role in Polyploid Gibel Carp. *Genetics* **203**, 1415–1424 (2016).
- Mei, J. & Gui, J. F. Genetic basis and biotechnological manipulation of sexual dimorphism and sex determination in fish. *Sci China Life Sci.* **58**, 124–136 (2015).
- Liu, S. J. *et al.* The formation of the polyploid hybrids from different subfamily fish crossing and its evolutionary significance. *Genetics* **176**, 1023–1034 (2007).
- Qin, Q. B. *et al.* The abnormal chromosome behavior during meiosis was revealed in allotetraploid of *Carassius auratus red var.* (♀) × *Megalobrama amblycephala* (♂). *BMC genetics* **15**, 95 (2014).

23. Qin, Q. B. *et al.* Induced All-Female Autotriploidy in the Allotetraploids of *Carassius auratus red var.* (♀) × *Megalobrama amblycephala* (♂). *Marine Biotechnology* **17**, 604–612 (2015).
24. Qin, Q. B. *et al.* The autotetraploid fish derived from hybridization of *Carassius auratus red var.* (female) × *Megalobrama amblycephala* (male). *Biology of reproduction* **91**, 93, 1–11 (2014).
25. Pontes, O. *et al.* Chromosomal locus rearrangements are a rapid response to formation of the allotetraploid *Arabidopsis suecica* genome. *Proc Natl Acad Sci USA* **101**, 18240–18245 (2004).
26. Lim, K. Y. *et al.* Rapid chromosome evolution in recently formed polyploids in *Tragopogon* (Asteraceae). *PLoS ONE* **3**, e3353 (2008).
27. Xiong, Z. Y. *et al.* Homoeologous shuffling and chromosome compensation maintain genome balance in resynthesized allopolyploid *Brassica napus*. *Proc Natl Acad Sci USA* **108**, 7908–7913 (2011).
28. Wang, Z. W. *et al.* A novel nucleo-cytoplasmic hybrid clone formed via androgenesis in polyploid gibel carp. *BMC Res Notes*. **4**(82), 1–13 (2011).
29. Zhang, J. *et al.* Meiosis completion and various sperm responses lead to unisexual and sexual reproduction modes in one clone of polyploid *Carassius gibelio*. *Scientific reports*. **5**, 10898 (2015).
30. Skalická, K. *et al.* Preferential elimination of repeated DNA sequences from the paternal, *Nicotiana tomentosiformis* genome donor of a synthetic, allotetraploid tobacco. *The New Phytologist* **166**, 291–303 (2005).
31. Qin, Q. B. *et al.* Organization and Variation Analysis of 5S rDNA in gynogenetic offspring of *Carassius auratus red var.* (female) × *Megalobrama amblycephala* (male). *BMC Genetics* **16**, 26 (2015b).
32. Gaeta, R. T. *et al.* Genomic changes in resynthesized *Brassica napus* and their effect on gene expression and phenotype. *Plant Cell* **19**, 3403–3417 (2007).
33. Buerkle, C. A. *et al.* The likelihood of homoploid hybrid speciation. *Heredity* **84**, 441–451 (2000).
34. Rieseberg, L. H. *et al.* Major ecological transitions in wild sunflowers facilitated by hybridization. *Science* **301**, 1211–1216 (2003).
35. Chen, L. *et al.* Novel genetic markers derived from the DNA fragments of *Sox* genes. *Molecular and Cellular Probes* **23**, 157–165 (2009).
36. Comai, L. *et al.* Phenotypic instability and rapid gene silencing in newly formed *Arabidopsis* allotetraploids. *Plant Cell* **12**, 1551–1567 (2000).
37. Howell, E. C. *et al.* A and C genome distinction and chromosome identification in *Brassica napus* by sequential fluorescence *in situ* hybridization and genomic *in situ* hybridization. *Genetics* **180**, 1849–1857 (2008).
38. Cheung, F. *et al.* Comparative analysis between homoeologous genome segments of *Brassica napus* and its progenitor species reveals extensive sequencelevel divergence. *Plant Cell* **21**, 1912–1928 (2009).
39. Xiong, Z. Y. & Pires, J. C. Karyotype and identification of all homoeologous chromosomes of allopolyploid *Brassica napus* and its diploid progenitors. *Genetics* **187**, 37–49 (2011).
40. Albertin, W. *et al.* Numerous and rapid nonstochastic modifications of gene products in newly synthesized *Brassica napus* allotetraploids. *Genetics* **173**, 1101icsti (2006).
41. Salmon, A. *et al.* Genetic and epigenetic consequences of recent hybridization and polyploidy in *Spartina* (Poaceae). *Mol. Ecol.* **14**, 1163 (2005).
42. Lim, K. Y. *et al.* Molecular cytogenetic analyses and phylogenetic studies in the *Nicotiana section Tomentosae*. *Chromosoma* **109**, 245–258 (2000).
43. Koukalova, B. *et al.* Fall and rise of satellite repeats in allopolyploids of *Nicotiana* over c. 5 million years. *New Phytologist* **186**, 148–160 (2010).
44. Qin, Q. B. *et al.* Analysis of 5S rDNA organization and variation in polyploid hybrids from crosses of different fish subfamilies. *Journal of Experimental Zoology Part B: Molecular and Developmental Evolution* **314**, 403–411 (2010).
45. Southern, E. M. Detection of specific sequences among DNA fragments separated by gel electrophoresis. *J Mol Biol* **98**, 503–517 (1975).
46. He, W. G. *et al.* Organization and variation analysis of 5S rDNA in different ploidy-level hybrids of red crucian carp × topmouth culter. *PLoS ONE* **7**, e38976 (2012).

Acknowledgements

This work was supported by the Major international cooperation projects of the National Natural Science Foundation of China (Grant No. 31210103918), Key Item of National Natural Science Foundation of China (Grant No. 31430088), Training Program of the Major Research Plan of the National Natural Science Foundation of China (Grant No. 91331105), the National Key Basic Research Program of China (Grant No. 2012CB722305), the Doctoral Fund of Ministry of Education of China (Grant No. 20114306130001), the National High Technology Research and Development Program of China (Grant No. 2011 AA100403), the Cooperative Innovation Center of Engineering and New Products for Developmental Biology of Hunan Province (20134486) and the construct program of the key discipline in Hunan province and China.

Author Contributions

Q.Q. carried out analyses and wrote the manuscript. S.L. contributed to the conception and design of the study. Z.L., L.C., Q.X. and Y.D.W. prepared figures. All authors read and approved the final manuscript.

Additional Information

Competing financial interests: The authors declare no competing financial interests.

How to cite this article: Qin, Q. *et al.* Rapid genomic changes in allopolyploids of *Carassius auratus red var.* (♀) × *Megalobrama amblycephala* (♂). *Sci. Rep.* **6**, 34417; doi: 10.1038/srep34417 (2016).



This work is licensed under a Creative Commons Attribution 4.0 International License. The images or other third party material in this article are included in the article's Creative Commons license, unless indicated otherwise in the credit line; if the material is not included under the Creative Commons license, users will need to obtain permission from the license holder to reproduce the material. To view a copy of this license, visit <http://creativecommons.org/licenses/by/4.0/>

© The Author(s) 2016