

Received:
22 September 2015

Revised:
17 March 2016

Accepted:
30 March 2016

Cite this article as:

Rahiminejad M, Hasegawa H, Papadopoulos M, MacKinnon A. Actinomycotic brain abscess. *BJR Case Rep* 2016; 2: 20150370.

CASE REPORT

Actinomycotic brain abscess

¹MARYAM RAHIMINEJAD, MRCS, ¹HARUTOMO HASEGAWA, MRCS, ¹MARIOS PAPADOPOULOS, FRCS (SN) and ²ANDREW MACKINNON, FRCR

¹Department of Neurosurgery, Atkinson Morley Wing, St George's Hospital, London, UK

²Department of Neuroradiology, Atkinson Morley Wing, St George's Hospital, London, UK

Address correspondence to: Dr Maryam Rahiminejad

E-mail: Maryam.rahn@gmail.com

ABSTRACT

Actinomycosis is caused by Gram-positive filamentous anaerobic organisms of genus *Actinomyces*, which are commensals of mucosal membranes of the oropharyngeal cavity, and gastrointestinal and genitourinary tracts. Central nervous system involvement is rare and may present as cerebral abscess, meningitis, meningoencephalitis, subdural empyema or epidural abscess. The radiological appearances of actinomycotic brain abscesses are not well recognized. Here, we present the characteristic imaging features of an actinomycotic brain abscess.

CLINICAL PRESENTATION

A 50-year-old male presented with a 2-day history of progressive difficulties with his speech. He reported no other relevant symptoms. His past medical history included ischaemic heart disease and cardiac stents. He smoked 20 cigarettes per day. There was no history of immunosuppression. Neurological examination revealed an alert patient with mild expressive dysphasia and right-sided facial weakness. The remainder of the physical examination was normal. He was afebrile and the pulse rate, blood pressure and oxygen saturations were normal. Blood tests, including full blood count, urea and electrolytes, and liver function tests were normal. The C-reactive protein level was 29.6 mg l⁻¹ (normal range 0–10 mg l⁻¹).

IMAGING FINDINGS

MRI demonstrated a large, peripherally enhancing thick-walled lesion in the left temporal lobe. The lesion comprised a larger cavity posteriorly and grape-like clustering anteriorly (Figure 1, arrow). The wall was T₂ hypointense and T₁ hyperintense (arrowhead) (Figure 1). The contents of the lesion showed restricted diffusion.

The principal differential diagnosis of a peripherally enhancing lesion in the brain is between a necrotic or cystic tumour and an abscess. Radiological diagnosis of the lesion is important because it may influence the initial surgical strategy. Tumours typically present insidiously, whereas a cerebral abscess may present rapidly with clinical features of infection. The history and clinical examination may not, however, be suggestive, especially in abscesses caused by atypical organisms. Radiologically, an irregular peripheral enhancement pattern can be seen with high-grade intrinsic tumours

such as glioblastoma multiforme. Pyogenic abscess walls are usually smooth and well defined with a disproportionate amount of oedema. Homogeneous restricted diffusion in a smooth-walled enhancing lesion is suggestive of a pyogenic abscess, whereas restricted diffusion related to a high-grade tumour is often heterogeneous.¹ Infections that may appear similar to brain tumours on imaging include *Actinomyces*, *Nocardia*, tuberculous granuloma, neurocysticercosis and eumycetoma.

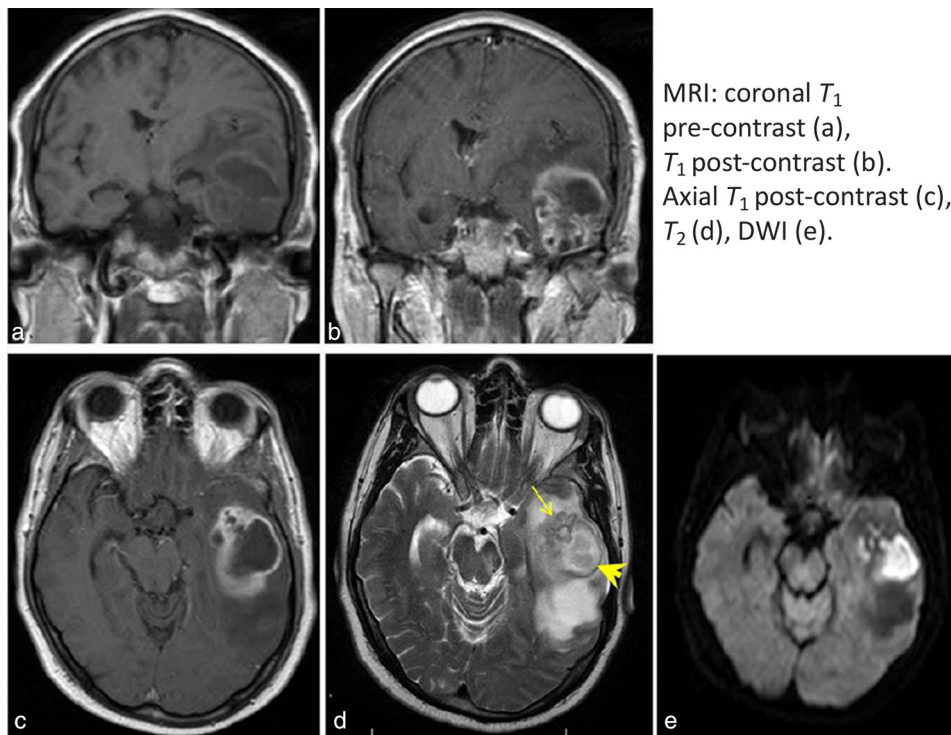
TREATMENT

The patient underwent stereotactic aspiration of the lesion and 16 ml of pus was aspirated. Cultures grew *Actinomyces meyeri* and *Fusobacterium nucleatum*. The treatment of actinomycotic brain abscess includes surgical aspiration and a substantive course of antibiotics.² Our patient was treated with metronidazole and clindamycin following surgical aspiration. The abscess recurred after a month and required re-aspiration, but subsequently responded to further antibiotic treatment. We were unable to identify the source of infection in our patient, although periodontal disease, which is associated with smoking,³ may have played a role.

DISCUSSION

There is a paucity of literature with focus on the radiological appearances of actinomycotic brain abscesses.^{4,5} Imaging descriptions in case reports often do not contain much detail on characteristic radiological features.^{6–8} Actinomycotic brain abscesses have been described as irregular, thick and nodular,⁵ or thin^{4,6} peripherally enhancing lesions^{4–9} with a hypointense core and a rim that is hyperintense on T₁ non-contrast imaging^{4,5} and

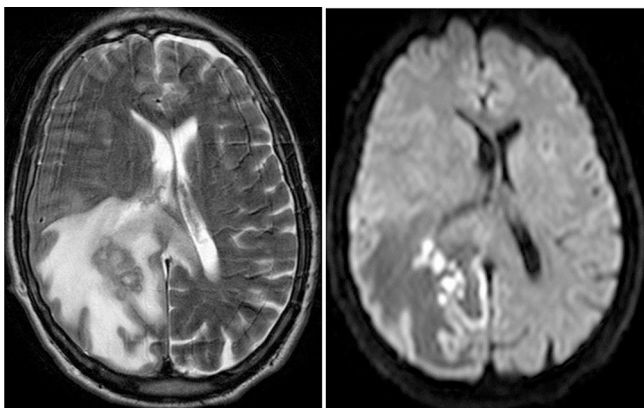
Figure 1. There is a large, peripherally enhancing thick-walled lesion in the left temporal lobe. The lesion comprises a larger cavity posteriorly and grape-like clustering anteriorly (arrow). The wall is T_2 hypointense and T_1 hyperintense (arrowhead). The contents of the lesion show restricted diffusion, which is consistent with an abscess. The diagnosis is suggested by the grape-like cluster pattern with a T_2 hypointense wall, which is a characteristic feature of an actinomycotic abscess. DWI, diffusion-weighted imaging.



MRI: coronal T_1 pre-contrast (a), T_1 post-contrast (b). Axial T_1 post-contrast (c), T_2 (d), DWI (e).

hypointense on T_2 images.⁵ Restricted diffusion of the core is often seen^{4,5,7} but is not the rule.⁹ The periphery may not restrict the diffusion.^{4,5} In our patient, the diagnosis was suggested by the grape-like cluster pattern with a T_2 hypointense wall, which is a characteristic feature of an actinomycotic abscess, which, to our knowledge, has not been reported in the literature. This imaging appearance was also well demonstrated in another patient treated in our department, a 60-year-old male with no relevant medical history who presented to our department with confusion and falls, and was found to have

Figure 2. Axial T_2 and diffusion-weighted MRI in a 60-year-old male with an actinomycotic brain abscess in the right parietal lobe with surrounding oedema. There is grape-like clustering with a T_2 hypointense thick wall. The contents show restricted diffusion.



an actinomycotic brain abscess (*A. meyeri*). MRI showed the T_2 hypointense grape-like clustering pattern in the right parietal lobe (Figure 2).

Actinomycosis is caused by Gram-positive filamentous anaerobic organisms of genus *Actinomyces*, which are commensals of mucosal membranes of the oropharyngeal cavity, and the gastrointestinal and genitourinary tracts.^{2,10} *Actinomyces israelii* is most commonly isolated in clinical infections. *A. meyeri* is less common but has a propensity to cause disseminated disease.^{2,11} Infection begins with a breach of the mucosa and is associated with poor dental hygiene, trauma and intrauterine devices. Infection is often polymicrobial and can be associated with *Fusobacterium* (as in this case)¹² or other commensal organisms.² Brain abscesses represent approximately two-thirds of central nervous system infections, the rest being meningitis, encephalitis, subdural empyema and epidural abscess.¹⁰ The organisms grow in clusters of tangled filaments and may exhibit an outer zone of granulation around the central purulent fluid, which contains tiny yellow clumps ("sulfur granules") formed by a matrix of bacteria, calcium phosphate and host tissue.¹³ The granulation zone is usually very thick and consists of a highly cellular fibrous tissue containing collagen fibres, fibroblasts, capillaries and inflammatory cells, mainly lymphocytes and monocytes.¹⁴ We postulate that these pathological features may lead to the grape-like clustering pattern, although it is interesting that this imaging feature has not been reported in *Nocardia* and fungal infections that share similar morphological and pathological features.¹⁵

LEARNING POINTS

1. Actinomycotic brain abscess is a rare but potentially life-threatening infection.
2. Actinomycotic brain abscesses appear on MRI as peripherally enhancing lesions that may exhibit a hyperintense rim on T_1 non-contrast imaging and a grape-like cluster pattern with a T_2 hypointense wall.

CONSENT

We were unable to obtain signed informed consent from our patient as the patient is deceased and attempts to contact the next of kin were unsuccessful. Exhaustive attempts have been made to contact the family and the paper has been sufficiently anonymized not to cause harm to the patient or his family.

REFERENCES

1. Omuro AM, Leite CC, Mokhtari K, Delattre JY. Pitfalls in the diagnosis of brain tumours. *Lancet Neurol* 2006; **5**: 937–48. doi: [http://dx.doi.org/10.1016/S1474-4422\(06\)70597-X](http://dx.doi.org/10.1016/S1474-4422(06)70597-X)
2. Valour F, Sénéchal A, Dupieux C, Karsenty J, Lustig S, Breton P, et al. Actinomycosis: etiology, clinical features, diagnosis, treatment, and management. *Infect Drug Resist* 2014; **7**: 183–97. doi: <http://dx.doi.org/10.2147/IDR.S39601>
3. Sreedevi M, Ramesh A, Dwarakanath C. Periodontal status in smokers and nonsmokers: a clinical, microbiological, and histopathological study. *Int J Dent* 2012; **2012**. doi: <http://dx.doi.org/10.1155/2012/571590>
4. Wang S, Wolf RL, Woo JH, Wang J, O'Rourke DM, Roy S, et al. Actinomycotic brain infection: registered diffusion, perfusion MR imaging and MR spectroscopy. *Neuroradiology* 2006; **48**: 346–50. doi: <http://dx.doi.org/10.1007/s00234-006-0067-2>
5. Heo SH, Shin SS, Kim JW, Lim HS, Seon HJ, Jung SI, et al. Imaging of actinomycosis in various organs: a comprehensive review. *Radiographics* 2014; **34**: 19–33. doi: <http://dx.doi.org/10.1148/rg.341135077>
6. Akhaddar A, Elouennass M, Baallal H, Boucetta M. Focal intracranial infections due to *Actinomyces* species in immunocompetent patients: diagnostic and therapeutic challenges. *World Neurosurg* 2010; **74**: 346–50. doi: <http://dx.doi.org/10.1016/j.wneu.2010.05.029>
7. Clancy U, Ronayne A, Prentice MB, Jackson A. *Actinomyces meyeri* brain abscess following dental extraction. *BMJ Case Rep* 2015; **2015**. doi: <http://dx.doi.org/10.1136/bcr-2014-207548>
8. Haggerty CJ, Tender GC. Actinomycotic brain abscess and subdural empyema of odontogenic origin: case report and review of the literature. *J Oral Maxillofac Surg* 2012; **70**: e210–e213. doi: <http://dx.doi.org/10.1016/j.joms.2011.09.035>
9. Ham HY, Jung S, Jung TY, Heo SH. Cerebral actinomycosis: unusual clinical and radiological findings of an abscess. *J Korean Neurosurg Soc* 2011; **50**: 147–50. doi: <http://dx.doi.org/10.3340/jkns.2011.50.2.147>
10. Smego RA. Actinomycosis of the central nervous system. *Rev Infect Dis* 1987; **9**: 855–65.
11. Fabbri G, Guardigni V, Sarubbo S, Cultera R, Contini C. Brain abscess sustained by *Actinomyces meyeri* in an immunocompetent patient. *J Neurol Neurophysiol*. 2014; **5**: 184.
12. Honda H, Bankowski MJ, Kajioka EH, Chokrungravanon N, Kim W, Gallacher ST. Thoracic vertebral actinomycosis: *Actinomyces israelii* and *Fusobacterium nucleatum*. *J Clin Microbiol* 2008; **46**: 2009–14. doi: <http://dx.doi.org/10.1128/JCM.01706-07>
13. Van Dellen JR. Actinomycosis: an ancient disease difficult to diagnose. *World Neurosurg* 2010; **74**: 263–4. doi: <http://dx.doi.org/10.1016/j.wneu.2010.06.012>
14. Roth J, Ram Z. Intracranial infections caused by *Actinomyces* species. *World Neurosurg* 2010; **74**: 261–2. doi: <http://dx.doi.org/10.1016/j.wneu.2010.06.011>
15. Smego RA, Foglia G. Actinomycosis. *Clin Infect Dis* 1998; **26**: 1255–63.