

CASE REPORT

Open Access

A case of splenic rupture: a rare event after laparoscopic cholecystectomy

Girolamo Geraci*, Antonino Picciurro, Andrea Attard, Giuseppe Modica, Massimo Cajozzo and Carmelo Sciumè

Abstract

Background: Laparoscopic cholecystectomy (LC) is generally safe and well-accepted. In rare cases, it is associated with complications (intra- e postoperative bleeding, visceral injury and surgical site infection). Splenic lesion has been reported only after direct trauma. We report an unusual case of splenic rupture presenting after “uncomplicated” LC.

Case presentation: A 77-year-old woman presented with distended abdomen, tenderness in the left upper quadrant and severe anemia 12 hours after LC. Clinical examination revealed hypovolemic shock. Abdominal computed tomography confirmed the diagnosis of splenic rupture, and the patient required an urgent splenectomy through midline incision. The post-operative course was uneventful and the patient was discharged on 7th postoperative day.

Splenic injury rarely complicates LC. We postulate that congenital or post-traumatic adhesions of the parietal peritoneum to the spleen may have been stretched from the splenic capsule during pneumoperitoneum establishment, resulting in subcapsular hematoma and subsequent delayed rupture.

Conclusions: Splenic rupture is an unusual but life-threatening complication of LC. Direct visualization of the spleen at the end of LC might be a useful procedure to aid early recognition and management in such cases.

Keywords: Splenic injury, Ruptured spleen, Laparoscopic cholecystectomy

Background

Laparoscopic cholecystectomy (LC) is today the well defined “gold standard” treatment for gallstone disease, as it is well-tolerated and associated with lesser postoperative pain and discomfort, improved cosmesis, reduction of recovery and subsequent chance for early return to social activities.

However, in a small percentage of patients, LC can be complicated by bleeding, infection, bile duct injuries, retained gallstones, persistent pain, and more rarely damage to the bowel and other viscera [1].

We report an unusual case of urgent splenectomy for a ruptured subcapsular hematoma twelve hours after elective LC for cholelithiasis.

Case presentation

A 77 years old woman with a recent history of constant right upper quadrant pain radiating to the right shoulder

was referred to our hospital for symptomatic gallbladder microlithiasis. No relevant past medical history was referred and pre-operative tests did not show any pathological findings (at ultrasonography (US), spleen diameter 101 mm).

We performed a LC by 4 ports “French” technique. The pneumoperitoneum was established with open “Hasson” technique respecting an insufflating volume of 5 l/min.

We used one 10-mm trocar into umbilicus, with a 10-mm 30° laparoscope, two 5 mm trocars, respectively on the left of the midline and in the right side, and one 10 mm epigastric trocar, setting the pneumoperitoneum at 12 mmHg. No specific peritoneal adhesions around the gallbladder have been identified.

The total operative time was about 75 minutes, without any intraoperative complications or bleeding. The abdomen was normal without tenderness or guarding; no analgesic was required and there was a normal intestinal function 6 hours after surgery; normal values of postoperative (6 hours after surgery) blood tests have

* Correspondence: girolamo.geraci@unipa.it
School of Medicine and Surgery, Section of General and Thoracic Surgery (Chief: Giuseppe Modica, MD), University Hospital of Palermo, Via Liborio Giuffrè, 5, 90127 Palermo, Sicily, Italy

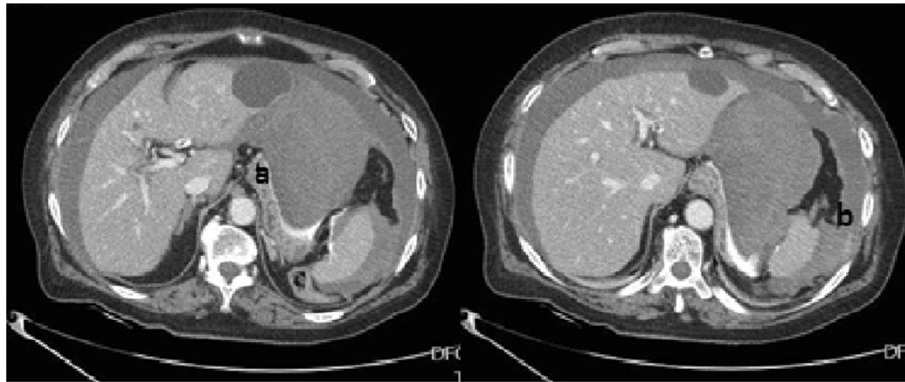


Figure 1 CT showing severe haemoperitoneum with two major blood collections localized respectively along the course of hepato-gastric ligament (a) and in the left sub-phrenic space (b).

been found; post-operative drainage in Winslow was silent.

During the first postoperative day, at about 12 hours after the operation, she experienced self limiting lipotimic episode (pulse of 120 beats/minute, blood pressure of 80/40 mm Hg), with cold and clammy peripheries and referred a sudden upper abdominal pain. The abdominal examination showed a distended abdomen characterized by tenderness in the left upper quadrant, guarding, and rebound tenderness, Blumberg's sign and shallow breathing.

Immediately blood tests were performed showing a severe anemia (hypovolemic shock): the Hemoglobin decreased from preoperative 10.4 gr/dl to 5.3 gr/dl and red blood cell from $3.6 \times 10^6/\mu\text{l}$ to $1.7 \times 10^6/\mu\text{l}$. We performed an urgent computed tomography (CT) that showed severe haemoperitoneum with two major blood collections localized respectively along the course of hepato-gastric

ligament (16×5 cm) and in the left sub-phrenic space (with active spreading of contrast medium) (Figure 1).

We did not consider the embolization of splenic artery before surgery because of the hemodynamic instability. The patient was urgently operated through a midline laparotomy and we found a 3-cm sub-capsular splenic haematoma ruptured into the peritoneum. We then performed splenectomy, intra-abdominal lavage (draining about 1.5 liters of blood and clots) and two drainages were placed (the first one in the splenic root and the second one in Douglas' root). We did not perform partial splenectomy or conservation of spleen in the suspect of more complex splenic lesion.

During the operation five blood unit transfusions, 9 plasma and 8 platelet units have been practiced. Twenty hours after the splenectomy blood tests were performed, showing a stable Hb of 9 gr/dl. No further transfusions were needed. The histological examination showed a subcapsular haematoma dissecting the capsula and ruptured (in peritoneum), with normal surrounding splenic pulp (Figure 2). The remote history of the patient was negative for any kind of trauma during the preceding year, or for hematologic syndrome such as myeloproliferative or myelodysplastic disease or thrombotic thrombocytopenic purpura. The patient was discharged on the 7th postoperative day in good clinical condition, after hospitalization of 4 days in intensive care unit.

She received the standard vaccinations against encapsulated organisms (pneumococcal, meningococcal, and haemophilus influenzae).

One week after the discharge the patient performed an abdomen US scan which was negative for any intra-abdominal fluid collection.

All data reported in the manuscript have been visualized and then approved by our University Hospital Ethics Committee and all procedures carried out on the patients were in compliance with the Helsinki Declaration.

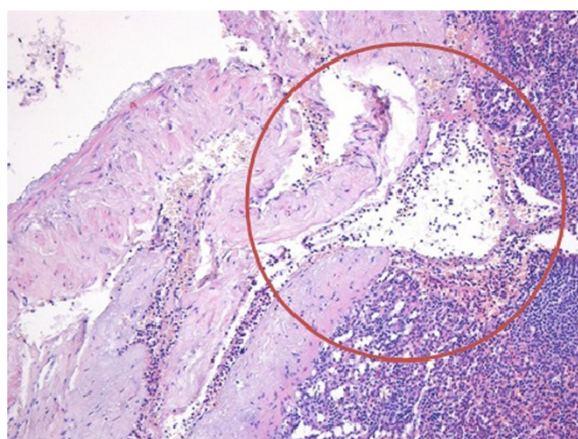


Figure 2 Histological examination showing subcapsular haematoma dissecting the capsula (red circle), with normal surrounding splenic pulp.

Table 1 Splenic rupture after LC in literature

| Author | Diagnosis | CT/US | Surgery | Outcome |
|---------------------------------|---|---|--|--|
| Leff D, JSLS 2007 [3] | Splenic rupture 3 weeks following uncomplicated LC | CT: Heterogeneous poorly enhancing soft tissue mass in the left upper quadrant inseparable from the spleen, measuring 11 x 13 cm, associated with a large volume of free intraperitoneal fluid highly suggestive of splenic rupture | Midline laparotomy with splenectomy | Discharged home one week following splenectomy |
| Bracale U, Ann It Chir 2013 [1] | Splenic rupture 36 hours following uncomplicated LC | US: important hemoperitoneum with two major blood collections localized respectively in the right and in the left sub-phrenic space | laparoscopic exploration + Midline laparotomy with splenectomy | Discharged home one week following splenectomy |
| Geraci G, 2013 | Splenic rupture 12 hours following uncomplicated LC | CT: Severe hemoperitoneum with two major blood collections localized respectively along the course of hepato-gastric ligament (16 x 5 cm) and in the left sub-phrenic space (active spreading of contrast medium) | Midline laparotomy with splenectomy | Discharged home one week following splenectomy |

Moreover, the patient has given written explicit, express and unequivocal consent to publish her sensible data on our manuscript.

Discussion

In a recent review, it was reported that up to 40% of all splenectomies are related to a iatrogenic splenic injury. In other studies, unplanned splenectomies range from 9% to 44% and incidental splenectomies are reported with a rate of 0.9% to 3.4% in gastric surgery, 1.2% to 8%

in operations involving the left colon, 1.4% to 24% in left nephrectomies, 0.1% to 4% in abdominal vascular surgery, with an increase to 21.3% when manoeuvres of visceral rotation are performed and 60% in case of emergency surgery on the abdominal aorta. Among all abdominal operations, those performed in the upper left quadrant yield a higher rate of iatrogenic lesions (0.9% to 49%), whereas appendicectomies and cholecystectomies are the procedures with the lowest incidence of splenic injuries [1].

Table 2 Splenic rupture after laparoscopy

| Author | Surgery (patient) | Intraoperative | Treatment | Hypothesis |
|--|--|--|--|---|
| Prian DV, Am J Obstet Gynaecol, 1974 [4] | Splenic rupture after pelvic laparoscopy | Posterior subcapsular haematoma | Midline laparotomy with splenectomy | Pneumoperitoneum stretched some adhesions between spleen, omentum and abdominal wall |
| Makanji HH, Br J Obstet Gynaecol, 1980 [5] | Splenic rupture after pelvic laparoscopy | Small posteriorspleniclesion | Midline laparotomy with splenectomy | Pneumoperitoneum stretched some adhesions between spleen, omentum and abdominal wall |
| Mahlke R, Z Gastroent 1992 [6] | Splenic rupture 5 hours following uneventful diagnostic laparoscopy (female, 48 yrs) | Small posteriorspleniclesion | Midline laparotomy with fibrin glue reparation | This complication must have occurred while establishing the pneumoperitoneum: stretching of small adhesions of the spleen with the abdominal wall may have played a role |
| Takeuchi K, J Reprod Med 2001 [7] | Combination of laparoscopy and preoperative trauma to the left upper quadrant of the abdomen | Sub-capsular hematoma | Midline laparotomy with splenectomy | Tearing away of delicate peritoneal reflections or small adhesions on the splenic capsule due to induction of pneumoperitoneum can result in sudden rupture and hemorrhage |
| Habib E, HPB (Oxford) 2004 [8] | Splenic rupture 5 days after laparoscopy for duodenal perforation closed with two sutures reinforced with fibrin glue (male, 45 yrs) | Posterior sub-capsular haematoma of the spleen at the site of the adhesion to the posterior peritoneum | Midline laparotomy with splenectomy | A posterior subcapsular haematoma located at the site of the adhesion of the spleen to the posterior peritoneum had dissected the capsule over the dome of the spleen, and had ruptured into the peritoneum (sub capsular haematoma of the spleen that remained asymptomatic until its rupture) |
| Huchon C, J Min Inv Gyn 2008 [9] | Splenic rupture 5 days after diagnostic laparoscopy (female, 52 yrs with history of abdominal surgery and with acute pelvic infection) | Sub-capsular hematoma, resulting in a splenic rupture | Midline laparotomy with splenectomy | Probably caused by an overlooked puncture by the Veress needle or by tension on splenic adhesions during the adhesiolysis |

The splenic capsule is more frequently injured, whereas the rate of injury to the hylum and the short gastric branches of the splenic artery is lower [2].

Splenic injury following LC is more rare complication: after an extensive PubMed literature research (Search criteria: splenic, rupture, laparoscopy, lesion), we only found two manuscripts in which the patients required a splenectomy, respectively 3 weeks and 36 hours after LC (Table 1). Moreover, we also found six cases of splenic rupture during laparoscopic gynaecologic procedure (Table 2).

It is reasonable that our patient had some adhesions between the splenic capsule and the parietal peritoneum. So, when the pneumoperitoneum was established at the start of the LC, stretching of the splenic capsule resulted in a small sub-capsular hematoma. This also seems to be supported by our histological findings. In addition, the temporal proximity between LC and splenectomy, the lacking of history of abdominal trauma and the histological absence of splenic intrinsic pathological abnormality, confirm that splenic rupture represents a primary complication of LC [3].

In the present case, haemoperitoneum and bleeding shock appeared about 12 hours following LC, when the subcapsular haematoma ruptured into peritoneum.

About the use of drainage during an uncomplicated LC, we follow the recommendation of a recent Cochrane Review in which “the Authors could not find evidence to support the use of routinary drainage after LC” [10].

Conclusions

Splenic rupture is an unusual but serious complication of LC. It has to be diagnosed and treated if possible during the laparoscopic procedure. The identification of a lesion of the anterior edge or the inferior pole of the spleen is possible during laparoscopy if the spleen is observed at the end of the procedure, whereas the detection of a posterior subcapsular haematoma of the spleen is impossible during laparoscopy and cannot be suspected if there is no bleeding from the spleen at the end of the procedure. Such a haematoma is not detectable after laparoscopy if the patient remains asymptomatic, and symptoms only occur after the haematoma ruptures.

However, we suggest visualization of the spleen at the end of LC to ensure early recognition and management of such cases. Obviously, manipulating the spleen is not necessary but we do believe it would be reasonable to wait for some seconds and see if there is any bleeding.

Imaging may be useful to diagnose such a haematoma but ultrasound and CT are unlikely to be performed in asymptomatic patients.

Competing interests

The authors declare that they have no competing interests.

Authors' contributions

GG conceived the study and designed either the manuscript either the review of literature; moreover, he has given final approval of the version to be published; AP has been involved in drafting the manuscript and pictures; AA has been involved in drafting the manuscript; GM has been involved in drafting the manuscript and revising it critically for important intellectual contents; CS and MC has been involved in drafting the manuscript and revising it critically for important intellectual contents. All authors read and approved the final manuscript.

Acknowledgements

We thank Dr. Chiara Sciarrino, from University of Palermo, who provided free English medical correction in August 2014.

Received: 3 September 2014 Accepted: 2 December 2014

Published: 11 December 2014

References

1. Bracale U, Merola G, Lazzara F, Spera E, Pignata G: **Spleen rupture: an unusual postoperative complication after laparoscopic cholecystectomy.** *Ann Ital Chir* 2013, **28**:84. (epub). doi:pii: S2239253X13021166 PMID: 23694944.
2. Falsetto A, Della Corte M, De Pascale V, Surfaro G, Cennamo A: **Iatrogenic splenic injuries.** *Ann Ital Chir* 2005, **76**(2):175–181. PMID: 16302657.
3. Leff D, Nortley M, Melly L, Bhutiani RP: **Ruptured spleen following laparoscopic cholecystectomy.** *JLS* 2007, **11**(1):157–160. PMID: 17651581 PMID: PMC3015800.
4. Prian DV: **Ruptured spleen as a complication of laparoscopy and pelvic laparotomy. Report of an unusual complication.** *Am J Obstet Gynecol* 1974, **20**(7):983–984. PMID: 4279554.
5. Makanji HH, Elliott HR: **Rupture of spleen at laparoscopy. Case report.** *Br J Obstet Gynecol* 1980, **87**(1):73–74. PMID: 6444831.
6. Mahlke R, Bogush G, Lankisch PG: **Splenic lesion as a complication of laparoscopy. Case report.** *Z Gastroenterol* 1992, **30**(11):795–797. PMID: 1471387.
7. Takeuchi K, Yamada T, Sato A, Nakago S, Maruo T: **Rupture of the spleen as an unusual complication of laparoscopy. A case report.** *J Reprod Med* 2001, **46**(8):779–780. PMID: 11547658.
8. Habib E: **Ruptured spleen: an unusual complication of laparoscopy.** *HPB (Oxford)* 2004, **6**(1):55–56. doi:10.1080/13651820310021421 PMID: 18333050 PMID: PMC2020652.
9. Huchon C, Estrade S, Montariol T, Stirnemann J, Bader G, Fauconnier A: **Splenic rupture after laparoscopic surgery: a case report.** *J Minim Invasive Gynecol* 2008, **15**(1):116–118. doi:10.1016/j.jmig.2007.08.615 PMID: 18262160.
10. Gurusamy KS, Samraj K, Mullerat P, Davidson BR: **Routine abdominal drainage for uncomplicated laparoscopic cholecystectomy.** *Cochrane Database Syst Rev* 2007, **4**:CD006004. PMID: 17943873.

doi:10.1186/1471-2482-14-106

Cite this article as: Geraci et al.: A case of splenic rupture: a rare event after laparoscopic cholecystectomy. *BMC Surgery* 2014 **14**:106.

**Submit your next manuscript to BioMed Central
and take full advantage of:**

- Convenient online submission
- Thorough peer review
- No space constraints or color figure charges
- Immediate publication on acceptance
- Inclusion in PubMed, CAS, Scopus and Google Scholar
- Research which is freely available for redistribution

Submit your manuscript at
www.biomedcentral.com/submit

