

RESEARCH

Open Access

Inclusion complexes of trihexyphenidyl with natural and modified cyclodextrins

Hideko Maeda, Risa Tanaka and Hirokazu Nakayama*

Abstract

The solubility of trihexyphenidyl (Thp) was improved by its combination with β -cyclodextrin (β -CD) and modified β -CDs. The solubility of Thp was found to be increased in the presence of β -CD, hydroxypropyl- β -cyclodextrin (HP- β -CD), methyl- β -cyclodextrin (Me- β -CD) and sulfobutylether- β -cyclodextrin (SBE- β -CD). In particular, the solubility of Thp in conjunction with SBE- β -CD was increased by a factor of 11. The formation constant (K_c) for the Thp/SBE- β -CD inclusion complex was determined to be 2300 L/mol based on fluorometry data. The structure of the Thp/SBE- β -CD complex in aqueous solution was examined by ^1H - ^1H rotating frame nuclear Overhauser effect spectroscopy (ROESY) NMR, and the phenyl moiety of the Thp was found to coordinate with the secondary hydroxyl face of the SBE- β -CD. A solid Thp/SBE- β -CD inclusion complex was prepared by freeze-drying.

Keywords: Trihexyphenidyl; Sulfobutylether- β -cyclodextrin; Inclusion complexes; Spectrofluorometry; Solubility

Introduction

Trihexyphenidyl (Thp) is a pharmaceutical compound that has been shown to improve various disease symptoms, including muscle rigidity, finger tremors and depression, by regulating the release of adrenaline.

Natural cyclodextrins (α -, β - and γ -CD) are widely used in many fields since they readily form inclusion complexes with a variety of organic compounds (Saenger 1980; Özdemir and Ordu 1998; Reineccius et al. 2002). As an example, β -cyclodextrin (β -CD) is used to suppress the bitterness of antihistamine drugs in solution through the formation of inclusion complexes (Hibi et al. 1984; Ono et al. 2011). However, β -CD exhibits relatively low solubility in water, which limits its applications in pharmaceutical formulations. Therefore, various CD derivatives have been synthesized to extend the potential applications (Uekama 1985; Szejtli 1992; Loftsson and Duchêne 2007). We have previously reported complexes of α -lipoic acid and melatonin with modified CD derivatives (Maeda et al. 2010, 2013), and determined that the solubilities of α -lipoic acid and melatonin in the

presence of sulfobutylether- β -CD increased by factors of 20 and 10, respectively.

In the present work, we investigated the solubility of inclusion complexes of Thp with natural and modified CDs at constant pH. To date, Thp complexes have not been assessed spectroscopically because of the low solubility of Thp. Haiyun *et al.* reported the evaluation of the complexation of rutin and β -CD by fluorescence spectroscopy in a phosphate solution containing 2% (v/v) methanol (Haiyun et al. 2003). Recently, Alvarez-Parrilla *et al.* reported stability constants for quercetin and rutin according to the methodology described by Haiyun (Alvarez-Parrilla et al. 2005). More recently, Al-Rawashdeh et al. reported the complexation of the sunscreen agents (oxybenzone, E-2-ethylhexyl-methoxycinnamate, octocrylene) and β -CD by UV-Vis spectroscopy in methanol/water mixture. The results demonstrate that the formation of inclusion complexes of the sunscreen agents and β -CD can inhibit the photodegradation (Al-Rawashdeh et al. 2010, 2013). Therefore, this method using an organic solvent was used in the present study to allow determination of the formation constants (K_c) of Thp with various CDs.

The enantiodiscrimination of chiral Thp enantiomers by carboxylated methyls of α -, β -, and γ -CD was predicted by molecular docking study (Mulisa et al. 2014). More recently, structure of Thp/ β -CD was elucidated by

* Correspondence: hiro@kobepharma-u.ac.jp
Department of Functional Molecular Chemistry, Kobe Pharmaceutical University, 4-19-1 Motoyamakita-machi, Higashinada-ku, Kobe 658-8558, Japan

^1H NMR spectroscopic and computational methods (Ali and Shamim 2014).

The stability constant (K) and K_c values of Thp with various CDs were obtained in a 50 mmol pH 7 phosphate buffer containing ethanol. At present, there are no solubility data or spectroscopic data for such inclusion complexes at constant pH in the literature. Therefore, we first investigated the effect of the natural CDs and then examined a series of modified CDs: sulfobutylether- β -cyclodextrin (SBE- β -CD), hydroxypropyl- α -cyclodextrin (HP- α -CD), hydroxypropyl- β -cyclodextrin (HP- β -CD), hydroxypropyl- γ -cyclodextrin (HP- γ -CD) and methyl- β -cyclodextrin (Me- β -CD) on the solubility of Thp.

Materials and methods

Materials

HP- α -CD, HP- β -CD, HP- γ -CD and Thp were purchased from Sigma-Aldrich (St. Louis, USA), α -CD, β -CD and γ -CD were purchased from Wako Chemical (Tokyo, Japan) and SBE- β -CD and Me- β -CD were purchased from Cydex (Kansas, USA) and the Junsei Chemical Co., Ltd. (Tokyo, Japan), respectively.

Phase solubility study

CD solutions of varying concentrations were made in a 10:90 (v/v) ethanol/50 mmol phosphate buffer mixture and were combined with excess amounts of Thp, after which the solutions were stirred at 300 rpm and 25°C. The concentration of Thp in each solution was subsequently measured using a fluorescence spectrometer following 3, 17, 24, 48 and 72 h. The data showed that an equilibrium concentration was obtained after 72 h, and so at that point the solutions were filtered through a 0.45 μm membrane. The concentration of Thp in each solution was determined based on fluorescence at $\lambda = 287$ nm with excitation at $\lambda = 257$ nm, using a Shimadzu RF-5300PC spectrometer.

Spectrometry

The pH of each sample solution was maintained at 7 by the addition of a 50 mmol/L potassium dihydrogen phosphate buffer. A 5.0×10^{-3} mol/L solution of Thp in ethanol was prepared and used in all experimental trials. In these trials, a 1 mL aliquot of this stock solution was transferred into a 10 mL volumetric flask together with an appropriate amount of a 1.0×10^{-2} mol/L and 1.25×10^{-2} mol/L CD phosphate solution, giving a final Thp concentration of 5.0×10^{-4} mol/L and CD concentrations of nil to 1.0×10^{-2} mol/L. Each solution was subsequently filtered through a 0.45 μm membrane. The fluorescence spectra of Thp (5.0×10^{-4} mol/L) was measured in a 10:90 (v/v) ethanol/50 mmol phosphate buffer solution. The fluorescence intensity generated by the Thp was found to vary depending on the concentration of CD added.

Therefore, the value of K_c could be obtained from the differences in the fluorescence intensities of the Thp/CD solutions. Fluorescence spectra were recorded with a Shimadzu RF-5300 PC spectrometer.

Sample preparation

Solid complexes of Thp and CDs were prepared by the following methods. Simple mixtures of Thp and CDs in solid form were prepared for comparison purposes.

Physical mixing method

Solid CD and Thp were combined at a ratio of 1 mmol (2.16 g in the case of the SBE- β -CD) to 1 mmol (0.3379 g for Thp) within a nylon bag, after which the mixture was shaken for 30 min.

Kneading method

Solid CD and Thp were combined at a ratio of 1 mmol (2.16 g for SBE- β -CD) to 1 mmol (0.3379 g for Thp) together with a small amount of ethanol (ca. 3 mL) and kneaded for 30 min.

Freeze-drying method

Solid CD and Thp were combined at a ratio of 10 mmol (1.08 g for SBE- β -CD) to 10 mmol (0.168965 g for Thp) and dissolved in 50 mL of phosphate buffer (pH 7), following which the water was removed under vacuum at -40°C.

Analytical methods

^1H NMR measurements

A mixture of CD and Thp at a ratio of 10 mmol (0.0216 g for SBE- β -CD) to 10 mmol (0.0034 g for Thp) was dissolved in 1 mL of D_2O to allow for ^1H - and ^1H - ^1H ROESY NMR measurements. When analyzing solely Thp, the compound was instead dissolved in CD_3OD because of its poor solubility in water, using a ratio of 10 mmol of Thp to 1 mL of CD_3OD .

^1H - ^1H ROESY NMR data were obtained in the phase sensitive mode under continuous wave (CW) operation, with spin lock for mixing. Spectra of the inclusion complex were obtained by spin lock pulses of 180_x - 180_x with a steady-state sequence prior to d_1 , together with $[\text{grad}]_z$ - 90_x - $[\text{grad}]_z$ pulses.

X-ray diffraction (XRD)

Powder XRD patterns were obtained using a Rigaku Denki (Tokyo, Japan) Rint 2000 diffractometer with Ni-filtered $\text{Cu K}\alpha$ radiation.

Differential scanning calorimetry (DSC)

The thermal behaviors of the solid complexes were assessed using a DSC 3100SA instrument (NETZSCH,

Selb, Germany) at a heating rate of 10°C/min from 25 to 500°C.

Results and discussion

Phase solubility

The complexation of Thp in the presence of natural CDs and various modified CDs was examined using the solubility method (Higuchi and Connors 1965). Figure 1 shows the phase solubility diagram of various Thp/CD complexes at 25°C and pH 7. A considerable increase in the solubility of Thp was observed in the presence of β-CD and the β-CD derivatives. In particular, in the presence of SBE-β-CD, the solubility of Thp was 11 times higher than that of Thp itself. Based on the Higuchi-Connors theory (Higuchi and Connors 1965), both β-CD and the β-CD derivatives showed an A_L-type solubility curve, indicating the formation of soluble complexes. There was no improvement in the solubility when employing either α-CD or HP-α-CD, while the use of γ-CD and HP-γ-CD approximately doubled the solubility of the Thp.

Table 1 summarizes the *K* values calculated from regression analysis of the phase solubility curves, using Eq. (1). Note that *K* values were not obtained for the γ-CD and

HP-γ-CD solutions since these solutions did not generate linear solubility curves.

$$K = \frac{\text{slope}}{\text{intercept} (1 - \text{slope})} \tag{1}$$

The complexation ability of the SBE-β-CD appears to be the highest among the CDs investigated in this study.

Spectrophotometry

Solutions containing 1.0 × 10⁻⁴ mol/L of Thp and 1.0 × 10⁻⁴ mol/L SBE-β-CD were made in a 50:50 (v/v) ethanol/50 mmol phosphate buffer solution and samples for the preparation of a Job's plot were prepared by mixing these solutions in varying proportions. The resulting Job's plot (Job 1928) obtained from fluorescence intensity measurements of these Thp/SBE-β-CD solutions is presented in Figure 2. The maximum [Thp] · ΔIntensity value at *R* = 0.5 indicates the formation of a complex in which the stoichiometry is 1:1. The stoichiometries of the other Thp/CD complexes were also found to be 1:1 using this same method.

Figure 3 shows the fluorescence spectra obtained for Thp in combination with various β-CD concentrations,

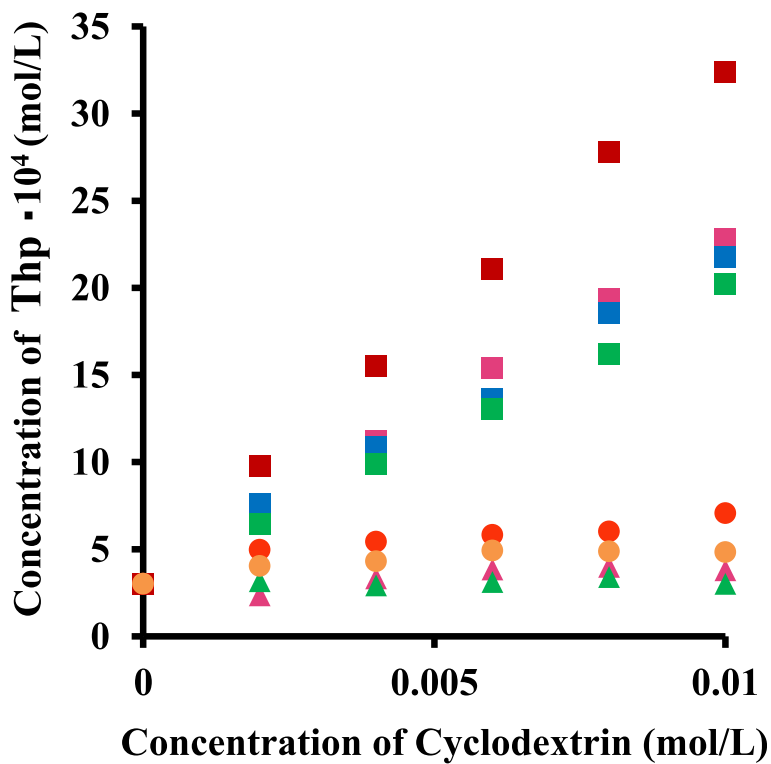


Figure 1 Phase solubility diagrams at 25°C and pH 7. The solubility of Thp in the presence of SBE-β-CD (Red square), Me-β-CD (Blue square), HP-β-CD (Green square), β-CD (Pink square), HP-γ-CD (Yellow circle), HP-α-CD (Green triangle), α-CD (Pink triangle) and γ-CD (Red circle) are shown as a function of their concentration.

Table 1 Regression parameters and stability constants (K) for Thp/CD complexes as determined by solubility diagrams at pH 7

CD	Slope	Intercept	R ²	K (L/mol)
β -CD	0.199	3.14	0.999	800 ± 50
HP- β -CD	0.169	3.00	0.999	680 ± 40
Me- β -CD	0.185	3.33	0.994	680 ± 80
SBE- β -CD	0.295	3.51	0.998	1200 ± 200

in which the fluorescence intensity at 283 nm is seen to increase with increasing β -CD concentrations from nil to 1.8×10^{-3} mol/L. From these data, the K_c value of the complex of Thp with each CD could be determined from a plot of the reciprocal of ΔF against the reciprocal of [CD] according to Benesi's equation (Benesi and Hildebrand 1949), below.

$$\frac{1}{\Delta F} = \frac{1}{a[G] \cdot K_c} \cdot \frac{1}{[CD]} + \frac{1}{a[G]} \tag{2}$$

Here ΔF is calculated as:

$$\Delta F = F - F_0 \tag{3}$$

where F and F_0 are the fluorescence intensities in the presence and absence of the CD, respectively, while $[G]$, $[CD]$ and a are the concentration of the guest compound (Thp), the concentration of the CD and a proportionality constant (Kondo et al. 1976; Hamai 1982), respectively.

The inset in Figure 3 demonstrates that a plot of $1/\Delta F$ at 283 nm as a function of $1/[CD]$ for the β -CD data generates a straight line that in turn gives a K_c value of 1200 L/mol.

Figure 4 presents the fluorescence spectra obtained for Thp together with various SBE- β -CD concentrations ranging from nil to 1.0×10^{-2} mol/L, while the associated inset shows the data for SBE- β -CD concentrations from nil to 1.8×10^{-3} mol/L. A plot of $1/\Delta F$ at 283 nm against $[CD]$ for these data again gives a straight line, from which a K_c value of 2300 L/mol was obtained.

Table 2 summarizes the K_c values estimated from Eq. (2). Based on the data in Table 1, obtained using the solubility method, the original β -CD and the β -CD derivatives were all found to improve the solubility of the Thp. From the

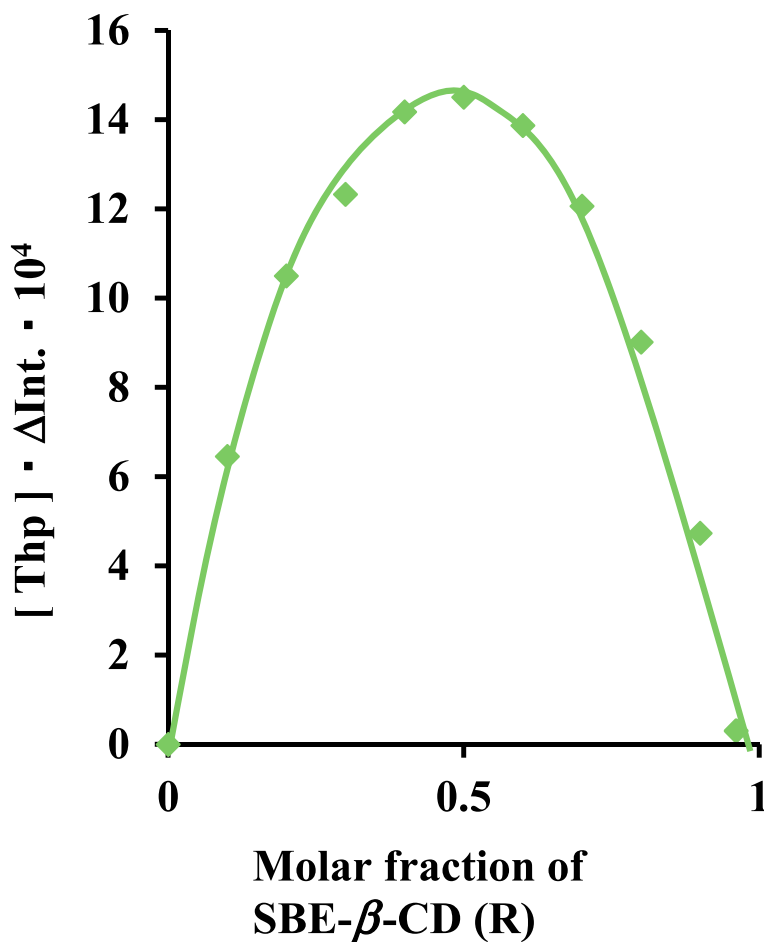


Figure 2 Job's plot of Thp/SBE- β -CD from fluorescence intensity measurements in a 50:50 (v/v) ethanol/50 mmol phosphate buffer solution.

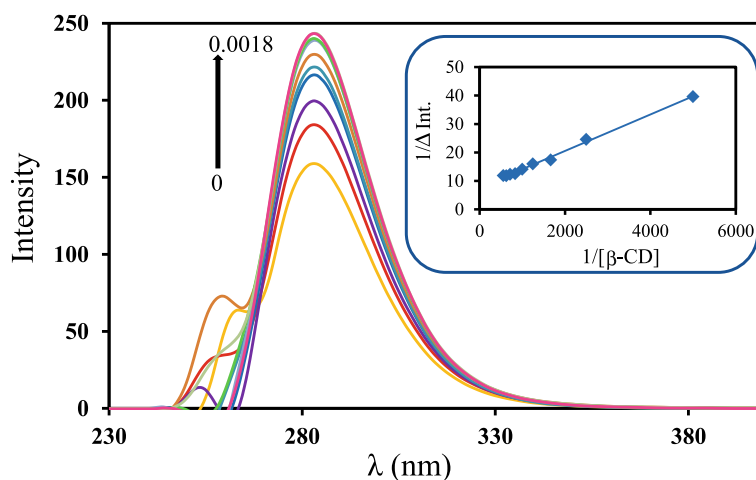


Figure 3 Fluorescence spectra of Thp in the presence of β -CD. The concentration of Thp is 5.0×10^{-4} mol/L and concentrations of β -CD are 0, 0.2, 0.4, 0.6, 0.8, 1.0, 1.2, 1.4, 1.6 and 1.8×10^{-3} mol/L from bottom to top in 10:90 (v/v) ethanol/50 mmol phosphate buffer solution. Inset shows their Benesi-Hildebrand plot for fluorescence increments at 283 nm.

spectral data in Table 2, the complexation ability of the SBE- β -CD appears to be the highest among the CDs used in this study. Compared with our stability constants (K) obtained by the solubility method, the K_c values of Thp/ β -CD and Thp/SBE- β -CD was somewhat large, while the K_c values of the Thp/Me- β -CD and Thp/HP- β -CD complexes are seen to be similar to the K values obtained by the solubility method. Apparent stability constant

estimated from solubility data has large error and has been used rough estimate of complex formation. Therefore, the difference between the stability constants obtained from solubility diagrams and spectroscopic has been sometimes recognized.

The solubility of Thp in the presence of SBE- β -CD was increased by a factor of 11, and the stability of the resulting Thp/SBE- β -CD complex was higher than those

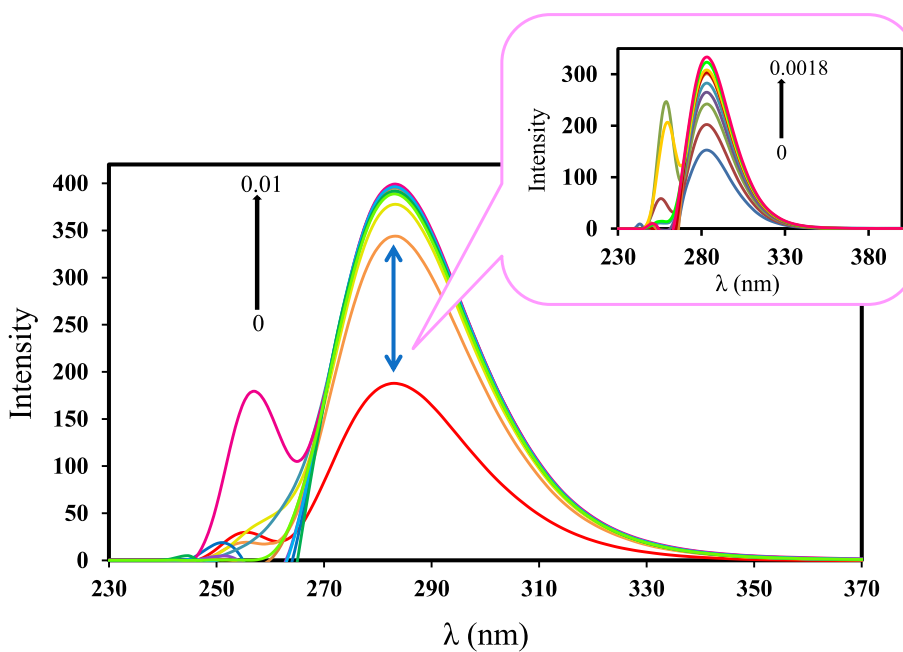


Figure 4 Fluorescence spectra of Thp in the presence of SBE- β -CD. The concentration of Thp is 5.0×10^{-4} mol/L and concentrations of SBE- β -CD are 0, 0.1, 0.2, 0.3, 0.4, 0.5, 0.6, 0.7, 0.8, 0.9, 1.0×10^{-2} mol/L from bottom to top in 10:90 (v/v) ethanol/50 mmol phosphate buffer solution. Inset shows fluorescence spectra in the presence of SBE- β -CD concentrations from bottom to top are 0, 0.2, 0.4, 0.6, 0.8, 1.0, 1.2, 1.4, 1.6 and 1.8×10^{-3} mol/L.

Table 2 Regression parameters and formation constants (K_c) for Thp/CD complexes as determined from spectra acquired in a 10% (v/v) ethanol phosphate solution

CD	Slope	Intercept	R ²	K (L/mol)
β -CD*	6.4×10^{-3}	7.74	0.996	1200 ± 40
HP- β -CD**	5.4×10^{-3}	3.78	0.992	700 ± 20
Me- β -CD**	5.0×10^{-3}	3.87	0.972	770 ± 40
SBE- β -CD**	1.9×10^{-3}	4.41	0.967	2300 ± 200

*[CD] = 0 – 0.002 mol/L, **[CD] = 0 – 0.01 mol/L.

of the other Thp/CD complexes. Because SBE- β -CD has sulfobutylether chains on both sides of CD rings, it has large hydrophobic space than the other derivatives of CDs, it would solubilize Thp. Furthermore, the end of sulfobutylether chain is anionic ion, which also increase

the solubility of Thp/SBE- β -CD complex. Therefore, the structure of Thp/SBE- β -CD complex was investigated.

Structure of the inclusion complex

Figures 5(a to c) present the ¹H NMR spectra of Thp, SBE- β -CD and the Thp/SBE- β -CD complex respectively, acquired in CD₃OD (Thp) and D₂O (SBE- β -CD and Thp/SBE- β -CD). The presence of peaks attributable to Thp in Figure 5(c) demonstrates the successful formation of the complex.

Figure 6 shows the ¹H-¹H ROESY NMR spectrum of the Thp/SBE- β -CD inclusion complex. This spectrum exhibits correlations between the signals at 7.39, 7.28 and 7.29 ppm (assigned to H_a, H_b and H_c of Thp based on ¹H-¹H COSY NMR) and those at 3.7 ppm (H-3 and H-5 of the SBE- β -CD). These results indicate that the

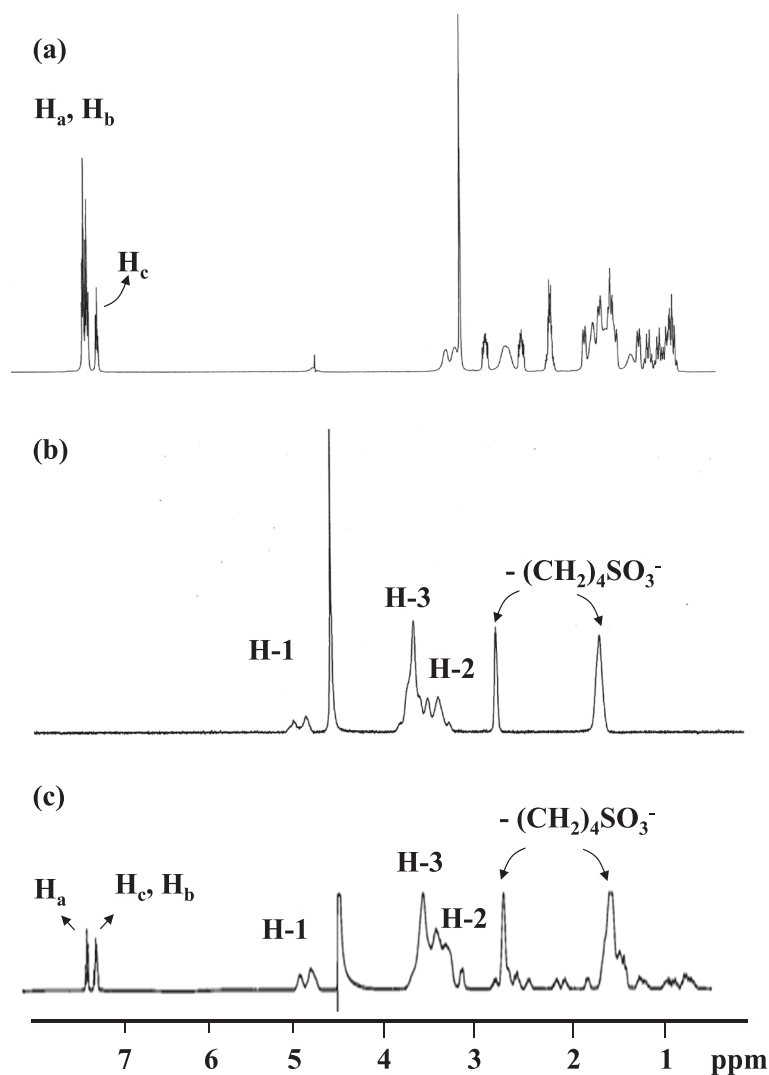
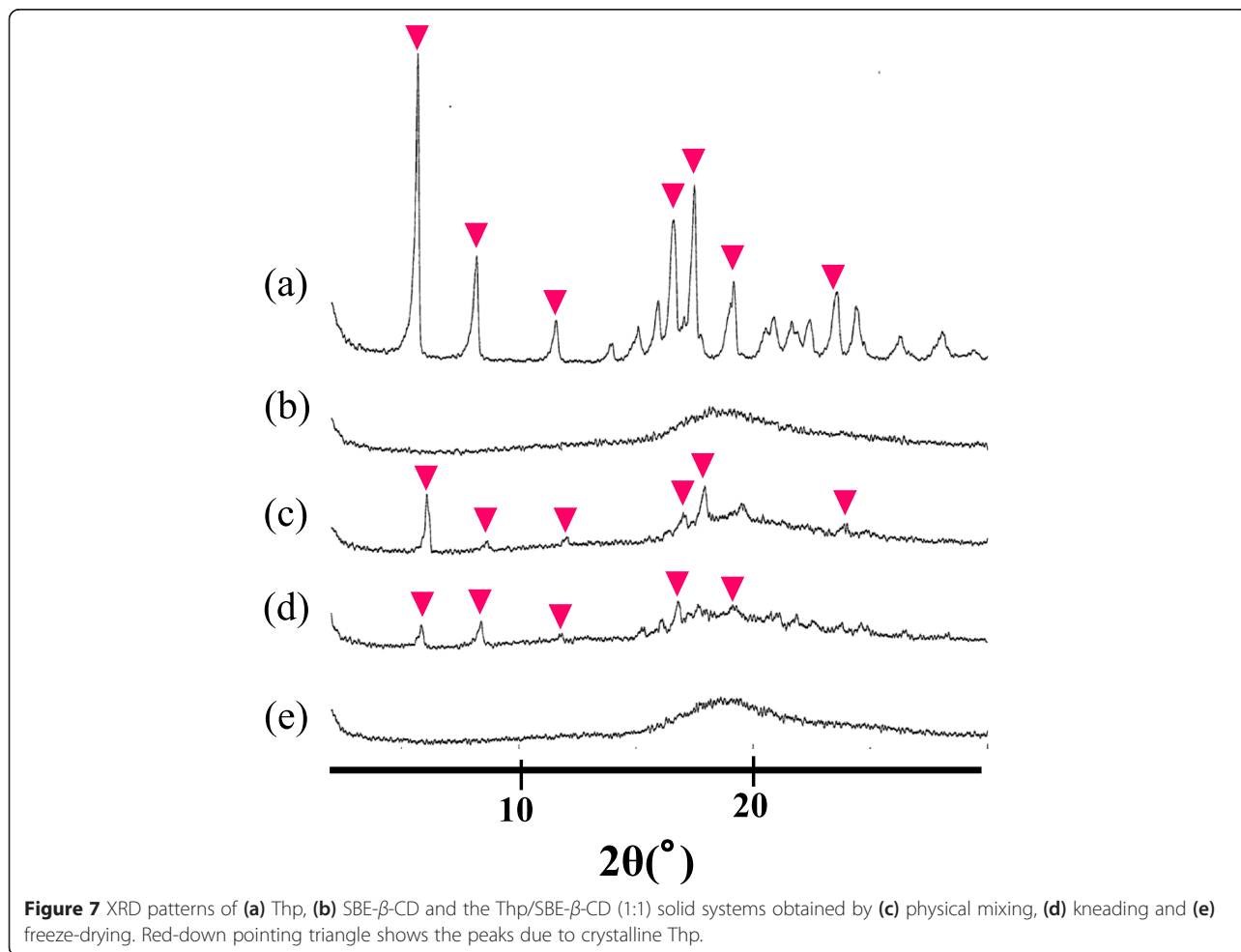
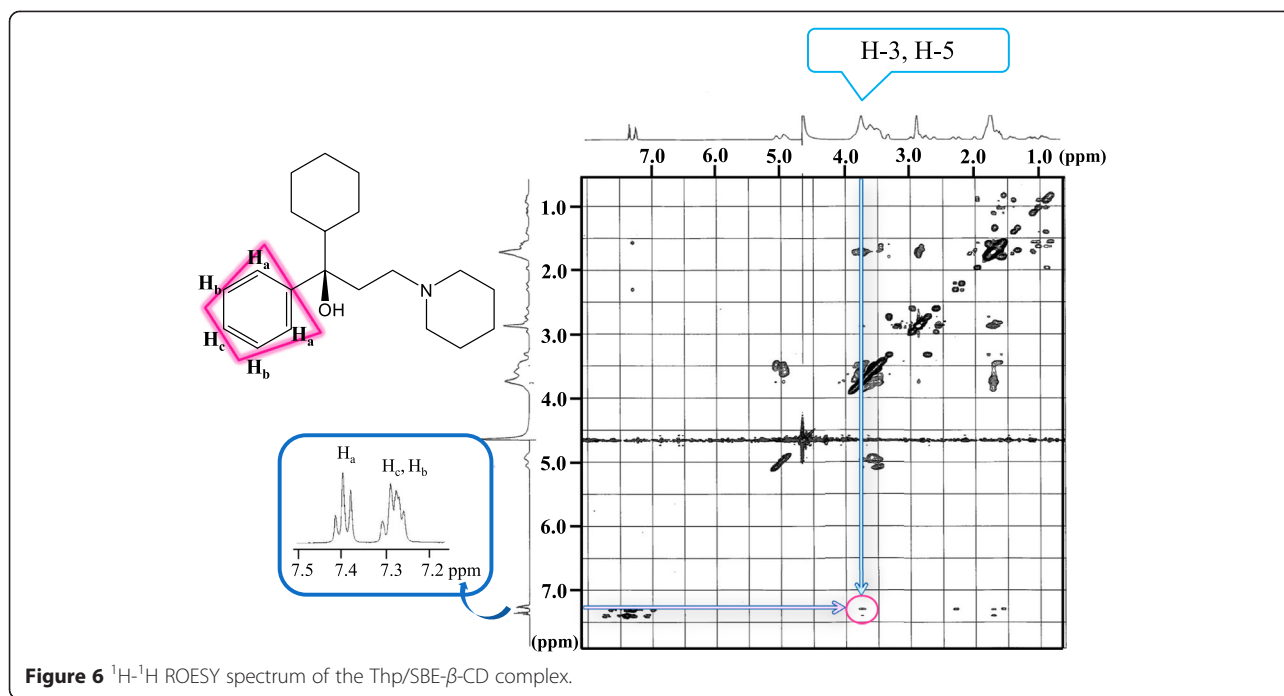


Figure 5 ¹H NMR spectra of (a) Thp (b) SBE- β -CD (c) Thp/SBE- β -CD complex. Note: the signal at 3.3 ppm (a) is due to residual methanol.



Thp phenyl group was incorporated into the cavity of the SBE- β -CD complex, whereas the Thp cyclohexane ring and piperidine ring was not incorporated. From these data, the stoichiometry of the Thp/SBE- β -CD complex was determined to be 1:1.

The above NMR data indicate that the Thp/SBE- β -CD complex consisted of an inclusion structure in the solution state. To further investigate this complex, a Thp/SBE- β -CD solid complex was subsequently synthesized and characterized.

Characterization of the Thp/SBE- β -CD solid complex

Figure 7 presents the XRD patterns of Thp, SBE- β -CD and the Thp/SBE- β -CD (1:1) solid systems obtained by physical mixing, kneading and freeze-drying methods. In Figure 7(a), seven characteristic diffraction peaks resulting from crystalline Thp are present at 2θ values of 5.69, 8.21, 11.6, 16.6, 17.5, 19.2 and 23.6°. In contrast, the XRD pattern of SBE- β -CD (Figure 7(b)) shows a broad diffraction profile because the solid material is amorphous due to the random substitution pattern of the sulfobutylether groups.

The solid systems obtained by physical mixing and kneading (Figures 7(c and d)) show six peaks at 2θ values of 6.07, 8.64, 12.1, 17.1, 17.9 and 24.0°, and five peaks at 2θ values of 5.85, 8.40, 11.9, 16.8 and 19.1° due to crystalline Thp, respectively. The solid obtained by the freeze-drying method, however, (Figure 7(e)) exhibits an amorphous state. These data suggest that the solid complex was obtained via freeze-drying and that Thp was included in the SBE- β -CD cavities.

Figure 8 shows the DSC curves obtained for Thp, SBE- β -CD and the Thp/SBE- β -CD (1:1) solid complexes obtained by the physical mixing, kneading and freeze-drying methods. An endothermic peak at approximately 256°C, corresponding to the melting point of Thp, is observed in the Thp curve (Figure 8(a)), as well as for the solid systems obtained by physical mixing (Figure 8(c)) and kneading (Figure 8(d)). The melting points of the physically mixed and kneaded materials were 229.5 and 231.5°C, respectively. An endothermic peak representing the decomposition of SBE- β -CD can be seen at approximately 260°C in Figure 8(b), as well as in the curves

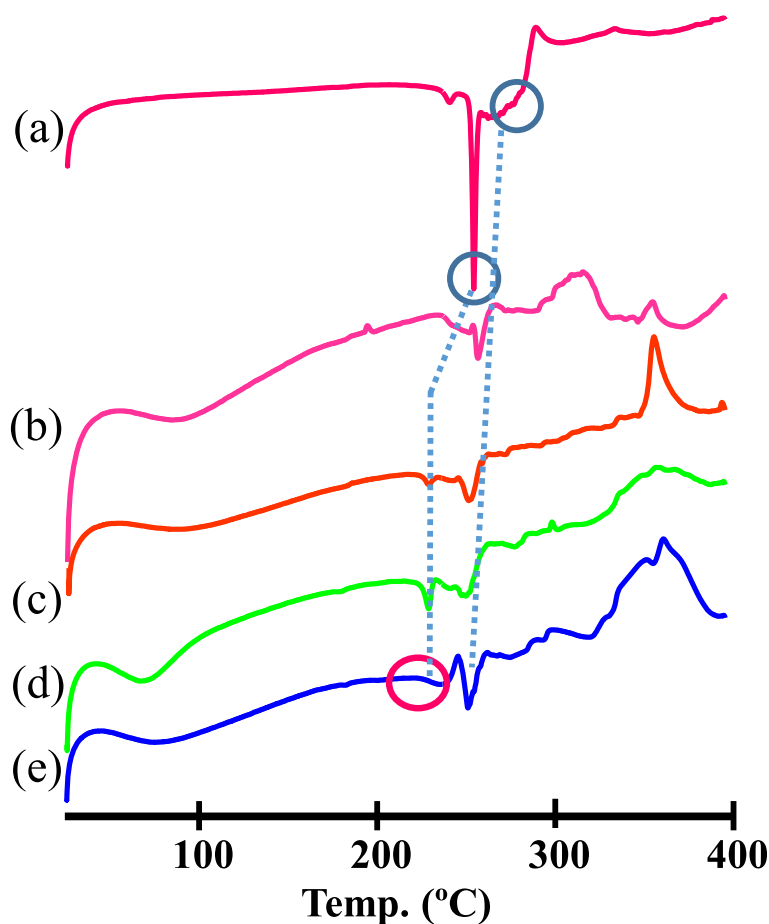


Figure 8 DSC curves of (a) Thp, (b) SBE- β -CD and Thp/SBE- β -CD (1:1) solid systems obtained by (c) physical mixing, (d) kneading and (e) freeze-drying.

obtained from the physically mixing, kneaded and freeze-dried samples (Figures 8(c to e)). The decomposition points of the solid systems obtained by the physical mixing, kneading and freeze-drying methods were 253.7, 256.9 and 253.9°C, respectively.

In the case of the freeze-dried solid complex, the endothermic peak corresponding to the melting of Thp is not present, suggesting that the Thp interacts with the SBE- β -CD in the solid state to form an inclusion complex.

These results demonstrate that the solid complex obtained by the freeze-drying method was completely different from the systems generated using physical mixing and kneading. The Thp evidently interacts with SBE- β -CD in the solid complex obtained by the freeze-drying method, forming an inclusion complex.

Conclusion

The effects of natural and various modified CDs on the solubility of Thp were assessed, using the solubility method. The solubility of Thp in the presence of SBE- β -CD was found to be increased significantly, by a factor of approximately 11. The stoichiometry of each Thp/CD complex was observed to be 1:1. In the case of the Thp/SBE- β -CD inclusion complex, the formation constants (K_c) obtained by fluorometry was 2300 L/mol. The phenyl groups of the Thp were found to be included in the SBE- β -CD cavities. Finally, the freeze-drying method was determined to successfully generate solid inclusion complexes.

Competing interests

The authors declare that they have no competing interests.

Authors' contributions

HM and HN designed the research; RT performed the experiments; HM and HN analyzed the data; HM wrote the manuscript. All authors read and approved the final manuscript.

Acknowledgements

The authors thank Assistant Professor C. Tode of Kobe Pharmaceutical University for the measurements of ^1H - ^1H COSY and ^1H - ^1H ROESY NMR spectra.

Received: 3 February 2015 Accepted: 17 April 2015

Published online: 07 May 2015

References

- Ali SM, Shamim S (2014) Structure elucidation of benzhexol- β -cyclodextrin complex in aqueous medium by ^1H NMR spectroscopic and computational methods. *J Encapsul Adsorption Sci* 4:63–70
- Al-Rawashdeh NAF, Al-Sadeh KS, Al-Bitar MB (2010) Physicochemical study on microencapsulation of hydroxypropyl- β -cyclodextrin in dermal preparations. *Drug Dev Ind Pharm* 36(6):688–697
- Al-Rawashdeh NAF, Al-Sadeh KS, Al-Bitar MB (2013) Inclusion complexes of sunscreen agents with β -cyclodextrin: spectroscopic and molecular modeling studies. *J Spectrosc*. doi:10.1155/2013/841409
- Alvarez-Parrilla E, De La Rosa LA, Torresrivas F, Rodrigo-García J, González-Aguilar GA (2005) Complexation of apple antioxidants: chlorogenic acid, quercetin and rutin by β -cyclodextrin (β -CD). *J Incl Phenom Macrocycl Chem* 53:121–129
- Benesi HA, Hildebrand JH (1949) A spectrophotometric investigation of the interaction of iodine with aromatic hydrocarbons. *J Am Chem Soc* 89:2703–2707

- Haiyun D, Jianbin C, Guomei Z, Shaomin S, Jinhao P (2003) Preparation and spectral investigation on inclusion complex of β -cyclodextrin with rutin. *Spectrochimica Acta Part A* 125:3421–3429
- Hamai S (1982) Association of inclusion compounds of β -cyclodextrin in aqueous solution. *Bull Chem Soc Jpn* 55:2721–2729
- Hibi T, Tatsumi M, Hanabusa M, Higuchi R, Imai T, Otagiri M, Uekama K (1984) Stabilization and reduction of irritant taste of anti-inflammatory drug pirofenol by β -cyclodextrin complexation. *Yakugaku Zasshi* 104(9):990–996
- Higuchi T, Connors KA (1965) Phase-solubility techniques. *Adv Anal Chem Instrum* 4:117–212
- Job P (1928) Formation and stability of inorganic complexes in solution. *Ann Chem* 9:113–203
- Kondo H, Nakatani H, Hiromi K (1976) Interaction of cyclodextrins with fluorescent probes and its application to kinetic studies of amylase. *J Biochem* 79:393–405
- Loftsson T, Duchêne D (2007) Cyclodextrins and their pharmaceutical applications. *Int J Pharm* 329:1–11
- Maeda H, Onodera T, Nakayama H (2010) Inclusion complex of α -lipoic acid and modified cyclodextrins. *J Incl Phenom Macrocycl Chem* 68:201–206
- Maeda H, Ogawa Y, Nakayama H (2013) Inclusion complex of melatonin and modified cyclodextrins. *J Incl Phenom Macrocycl Chem* 78:217–224
- Mulisa E, Ndobor T, Xiao D, He H (2014) Molecular docking method for the prediction of enantioselectivity of trihexyphenidyl and its derivatives on carboxy methyl-cyclodextrins. *Ind J Sci Res Tech* 2(2):31–37
- Ono N, Miyamoto Y, Ishiguro T, Motoyama K, Hirayama F, Iohara D, Seo H, Tsuruta S, Arima H, Uekama K (2011) Reduction of bitterness of antihistaminic drugs by complexation with β -cyclodextrin. *J Pharm Sci* 100(5):1935–1943
- Özdemir N, Ordu Ş (1998) Improvement of dissolution properties of furosemide by complexation with β -cyclodextrin. *Drug Dev Ind Pharm* 24:19–25
- Reineccius TA, Reineccius GA, Peppard TL (2002) Encapsulation of flavors using cyclodextrins: comparison of flavor retention in alpha, beta, and gamma types. *J Food Sci* 67:3271–3279
- Saenger W (1980) Cyclodextrin inclusion compounds in research and industry. *Angew Chem Int Ed Engl* 19:344–362
- Szejtli J (1992) The properties and potential uses of cyclodextrin derivatives. *J Inclusion Phenom Mol Recognit Chem* 14:25–36
- Uekama K (1985) Pharmaceutical applications of methylated cyclodextrins. *Pharm Int* 6:61–65

Submit your manuscript to a SpringerOpen® journal and benefit from:

- Convenient online submission
- Rigorous peer review
- Immediate publication on acceptance
- Open access: articles freely available online
- High visibility within the field
- Retaining the copyright to your article

Submit your next manuscript at ► springeropen.com