

CORRECTION

Open Access

Correction: Lenalidomide regulates CNS autoimmunity by promoting M2 macrophages polarization

Qinjie Weng, Jiaying Wang, Jiajia Wang, Jing Wang, Fahmida Sattar, Zhikang Zhang, Jiahuan Zheng, Zijie Xu, Mengting Zhao, Xuan Liu, Lijun Yang, Guifeng Hao, Liang Fang, Q. Richard Lu, Bo Yang and Qiaojun He

Correction to: *Cell Death and Disease*

<https://doi.org/10.1038/s41419-018-0290-x>
published online 14 February 2018

Since online publication of this article, the authors noticed that there were errors in the images used to compile Figs. 1, 3 and Supplementary Figure S3. Specifically, incorrect western blot cropping resulted in the wrong images being used to compile the GAPDH bands in Fig. 1c, and the Ym1 and GAPDH bands in Fig. 1d. In addition, incorrect

images were used to compile the flow cytometry images in Fig. 3d (CD4+IL-17+/lenalidomide) and Supplementary Figure S3d (CD4+Foxp3+/lenalidomide), resulting in erroneous duplication. The corrected figures are provided below. The authors apologise for any inconvenience caused, and have confirmed that the associated quantitation is correct and that the results of the study were not affected.

Published online: 07 February 2020

© The Author(s) 2020



Open Access This article is licensed under a Creative Commons Attribution 4.0 International License, which permits use, sharing, adaptation, distribution and reproduction in any medium or format, as long as you give appropriate credit to the original author(s) and the source, provide a link to the Creative Commons license, and indicate if changes were made. The images or other third party material in this article are included in the article's Creative Commons license, unless indicated otherwise in a credit line to the material. If material is not included in the article's Creative Commons license and your intended use is not permitted by statutory regulation or exceeds the permitted use, you will need to obtain permission directly from the copyright holder. To view a copy of this license, visit <http://creativecommons.org/licenses/by/4.0/>.

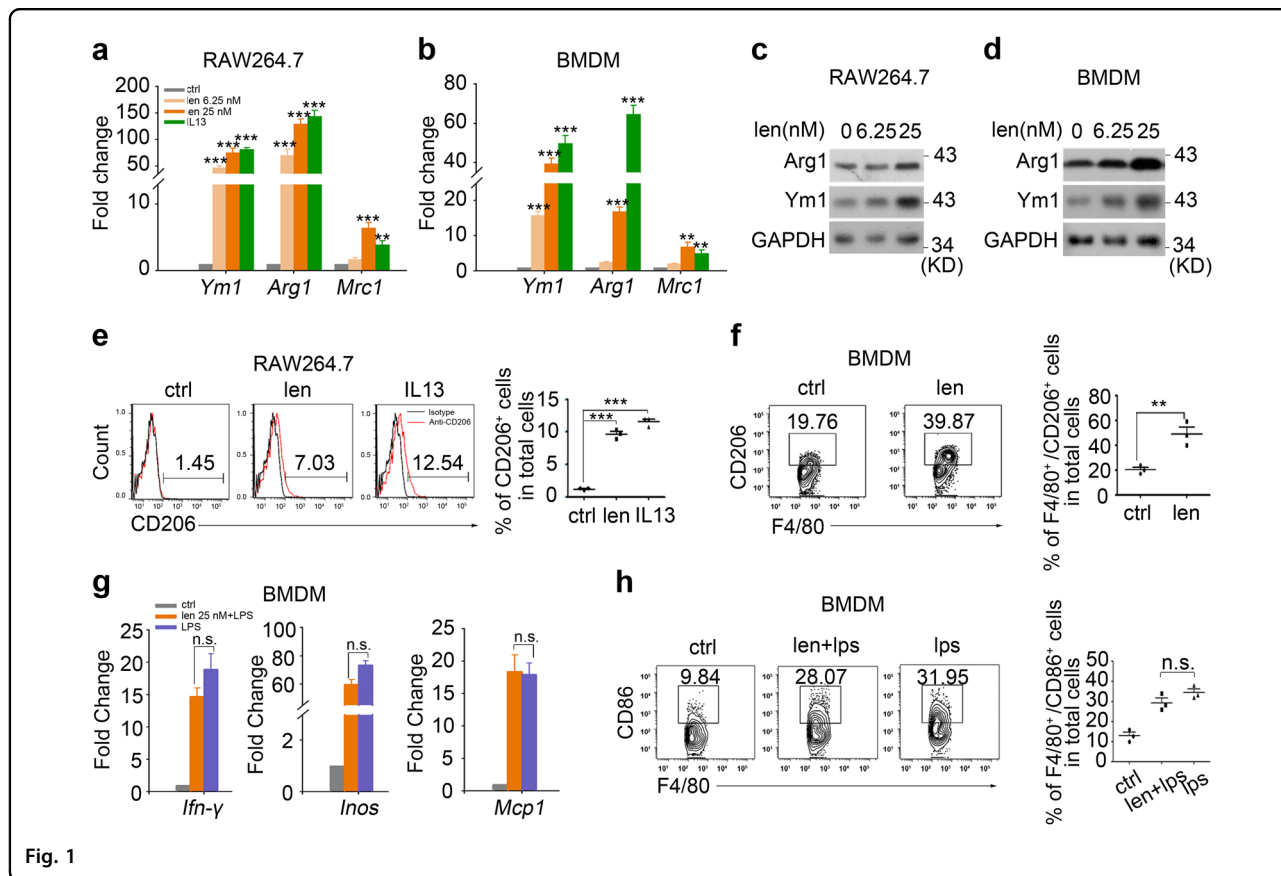


Fig. 1

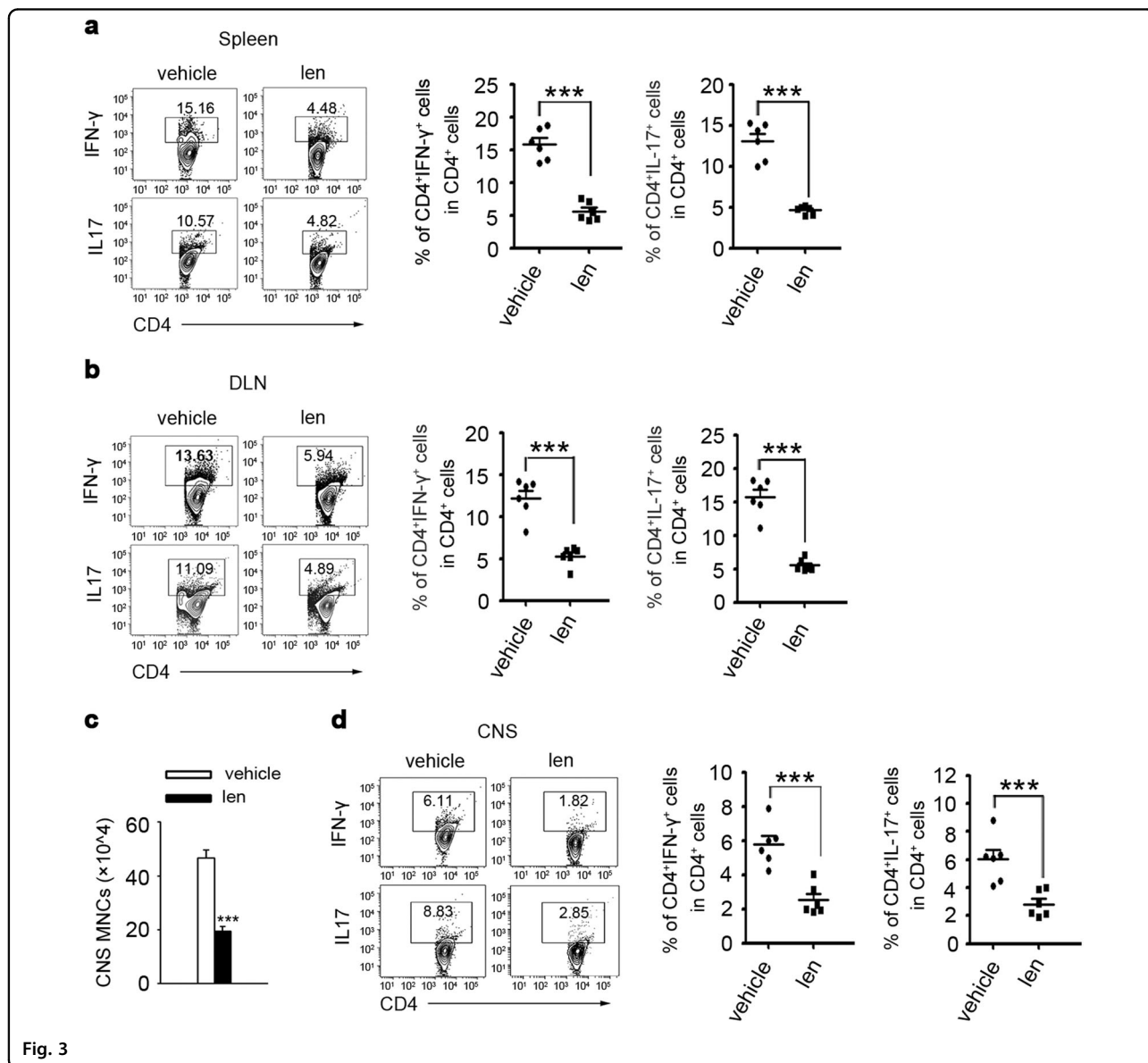


Fig. 3

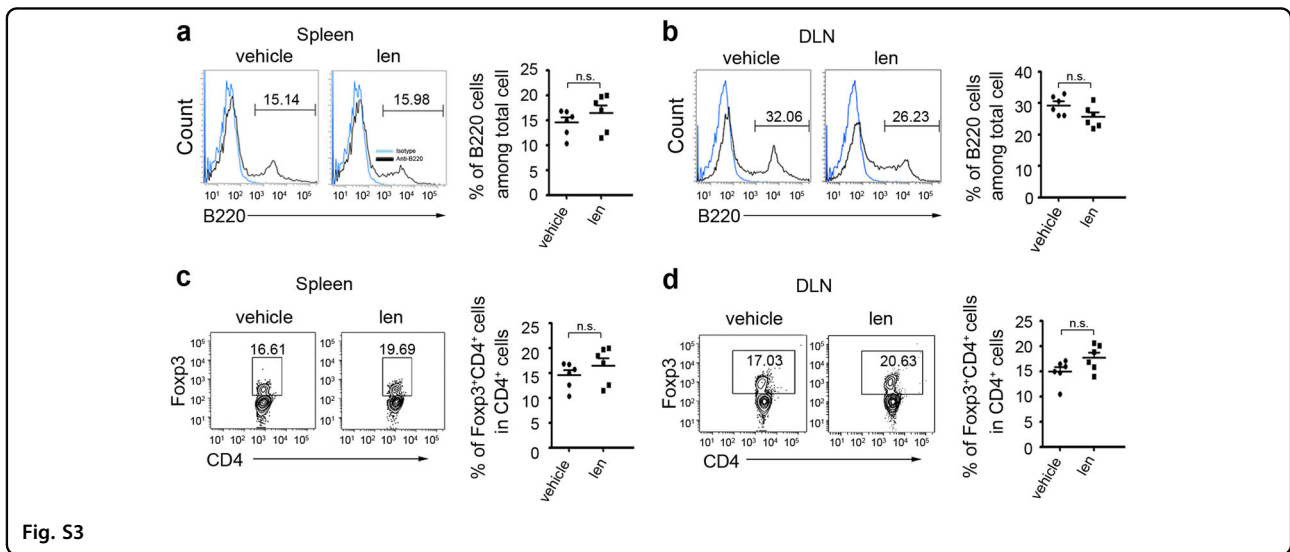


Fig. S3