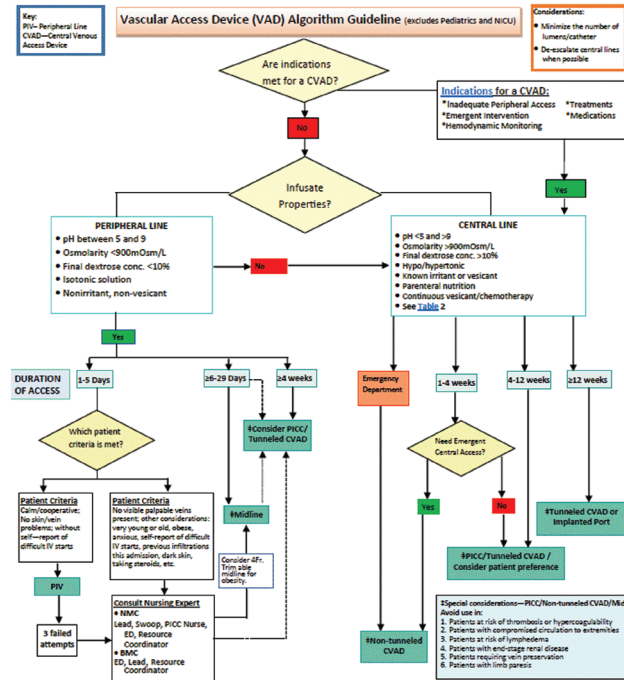


4,588 midline catheter days, with two midline infections, for a cumulative rate over those 6 months of 0.435 midline catheter infections per 1,000 midline days. This was compared with 26,575 CVC days, with 33 documented CLABSIs, for a rate of 1.242 per 1,000 CVC days. Since the vascular algorithm was implemented, the infection rate from the compilation of CVC and midline catheters is 1.12 per 1,000 catheter days.

Conclusion. The implementation of a vascular access algorithm including midlines may effectively reduce central line insertions and thereby decrease CLABSIs through appropriate utilization of a lower risk device (midline). Further research into comparing additional risks, benefits, complications and costs of midline catheters and all styles of central venous catheters is warranted.



Disclosures. All authors: No reported disclosures.

2097. Do Catheter-Associated Bloodstream Infections Affect Patients' Perception of Care?

Mariam Assi, MD¹; Nargiza Kurbanova, RN, BSN, BA² and Rehan Qayyum, MD, MHS, FAHA³; ¹Internal Medicine, Virginia Commonwealth University Health System, Richmond, Virginia, ²Virginia Commonwealth University Health System, Richmond, Virginia, ³Internal Medicine, Virginia Commonwealth University Medical Center, Richmond, Virginia

Session: 234. Healthcare Epidemiology: Device-associated HAIs
Saturday, October 6, 2018: 12:30 PM

Background. Few cross-sectional studies have reported an association between patient satisfaction, a metric for performance-based hospital reimbursement, and catheter-associated bloodstream infections (CLABSI), but the persistence of this relationship over time has not been examined. Therefore, our aim in this study was to examine this relationship over a 4-year period using data from almost all hospitals in the United States.

Methods. We used the publicly accessible Hospital Compare website to extract data on hospital characteristics, hospital-level CLABSI and patient satisfaction scores (Hospital Compare Consumer Assessment of Healthcare Providers and Systems survey data) from 2011 to 2014. Mixed linear regression models were used to examine the relationship between the four domains of satisfaction scores (included in models separately) and observed to expected CLABSI ratio without and with adjustment for hospital ownership, availability of emergency services, nurse to bed ratio, resident to bed ratio, total number of beds, total number of physicians, and urban vs. rural status.

Results. Of the 3,528 hospitals (12,396 observations) with patient satisfaction data, CLABSI data were available for 2,129 hospitals. The mean (SD) CLABSI ratio was 0.54 (0.56), patient satisfaction with physician and nurse communication were 80.2% (4.4%) and 77.3% (4.9%), respectively; 70% (9.1%) of patients recommended a hospital and 68.8% (8.0%) rated a hospital 9 or 10 (on a 1–10 scale). Over 4 years, CLABSI scores decreased each year (−0.02, 95% CI = −0.03 to −0.01) while satisfaction scores increased (physicians: 0.16, 95% CI = 0.12–0.19; nurses: 0.56, 95% CI = 0.52–0.60; hospital recommendation: 0.18, 95% CI = 0.12–0.23; hospital rating: 0.56, 95% CI = 0.50–0.62). In adjusted models, higher CLABSI ratios were associated with lower satisfaction with physician (−0.09, 95% CI = −0.17 to −0.01) and nurse (−0.12, 95% CI = −0.21 to −0.02) communication. In contrast, CLABSI ratios were not associated with hospital recommendation (−0.09, 95% CI = −0.22 to 0.04) or rating (−0.07, 95% CI = −0.21 to 0.06).

Conclusion. In this first longitudinal study of most hospitals in the United States, hospitals with higher CLABSI ratios had lower patient satisfaction with physician and nurse communication but not with hospital recommendation or rating.

Disclosures. All authors: No reported disclosures.

2098. Reduction of Central-Line-associated Bloodstream Infection Rates: Impact of Minimizing Blood Cultures from Central Lines

Nisreen Murad, MS, CIC¹; Ana C. Bardossy, MD²; Ryan Shelters, BS¹; Eman Chami, MHA, CIC¹; Stephanie Schuldt, RN¹; Meredith Van Harn, MS¹ and George Alangand, MD, FIDSA²; ¹Henry Ford Health System, Detroit, Michigan, ²Infectious Diseases, Henry Ford Health System, Detroit, Michigan

Session: 234. Healthcare Epidemiology: Device-associated HAIs
Saturday, October 6, 2018: 12:30 PM

Background. CLABSI surveillance at our institution indicated that a significant proportion of CLABSI had a positive blood culture drawn from central line (CL-BC) with corresponding negative BC done by venipuncture (VP-BC), suggesting possible CL contamination. The contribution of minimizing CL-BC on CLABSI rates remains unknown. This study evaluates the impact on CLABSI rates of reducing CL-BC in addition to standard CLABSI reduction strategies in adult intensive care units (ICUs).

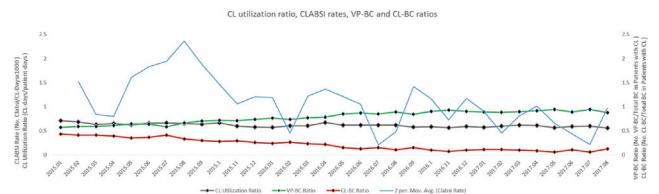
Methods. The study was done from January 1, 2015 to August 31, 2017 in adult ICUs at a hospital with 164 ICU beds, in urban Detroit. Education initiatives to minimize CL-BC were implemented in the ICU. Internal metrics VP-BC ratio (No. VP-BC/total BC in patients with CL) and CL-BC ratio (No. CL-BC/total BC in patients with CL) were used to monitor effectiveness. Compliance audits of CL maintenance were done, i.e., CL dressing intact, proper use of chlorhexidine dressing, site without redness or drainage. Monthly unit-specific CLABSI rates, CL utilization ratios (CL-UR), and VP-BC and CL-BC ratios were provided as feedback to the ICUs. CLABSI rates and number of contaminated BC were monitored. Trends of the various metrics were analyzed using Kendall Tau's correlation for continuous variables. The relationship between CLABSI rate, VP-BC ratios and CL-UR were examined using Spearman's correlation coefficient. Statistical significance was set at $P < 0.05$.

Results. During the study period in the ICU there were 148,762 patient-days and 82,153 CL days. Trends over time of the metrics are shown (figure). There was significant improvement noted in CLABSI rates, CL-UR and VP-BC rates (Table 1). There was a significant correlation between the CLABSI rates with VP-BC (−0.395 (P value = 0.025) and a not significant correlation with CL-UR 0.278 (P value = 0.123). The number of contaminated blood cultures were 29, 3, and 0 in 2015, 2016 and 2017, respectively.

Conclusion. Minimizing BC obtained from CL can significantly contribute to reduction in CLABSI rates when used in combination with standard best care practices for CL insertion and maintenance.

Table 1: Correlation of Metrics Over Time

Variable	Correlation with Time	P-Value
CLABSI rate	−0.260	0.036
CL-UR	−0.520	<0.001
VP-BC ratio	0.806	<0.001
CL care bundle compliance	−0.048	0.805



Disclosures. All authors: No reported disclosures.

2099. Catheter-related Staphylococcus aureus Bacteremia and Septic Thrombosis: The Role of Anticoagulation and Duration of Intravenous Antibiotic Therapy

Rita Wilson Dib, MD¹; Anne-Marie Chaftari, MD²; Ray Y. Hachem, MD¹; Ying Jiang, MS³; Dima Dandachi, MD^{4,5} and Issam Raad, MD¹; ¹Department of Infectious Diseases, University of Texas MD Anderson Cancer Center, Houston, Texas, ²University of Texas MD Anderson Cancer Center, Houston, Texas, ³Department of Infectious Diseases, Infection Control and Employee Health, The University of Texas MD Anderson Cancer Center, Houston, Texas, ⁴Medicine, Section of Infectious Diseases, Baylor College of Medicine, Houston, Texas, ⁵Infectious Diseases, The University of Texas MD Anderson Cancer Center, Houston, Texas

Session: 234. Healthcare Epidemiology: Device-associated HAIs
Saturday, October 6, 2018: 12:30 PM

Background. Catheter-related septic thrombosis is suspected in patients with persistent Central Line-associated Blood Stream Infection (CLABSI) after 72 hours of appropriate antimicrobial therapy. There are limited data outlining the characteristics of the disease and the adequate duration of antimicrobials. In addition, the role of anticoagulation in the management of septic thrombosis remains unclear. We herein

studied the clinical characteristics of *Staphylococcus aureus* catheter-related septic thrombosis as well as the appropriate management and duration of treatment.

Methods. We conducted this retrospective study where we included patients with CLABSI due to *Staphylococcus aureus* who had a concomitant radiographic evidence of thrombosis at the level of catheter placement between the years 2005 and 2017. We collected data pertaining to patients' medical history, clinical presentation, management, treatment and outcome within 3 months of bacteremia onset. Failure was defined as persistence of signs and symptoms at 72 hours, persistence bacteremia at 48–96 hours, relapse, complications or overall mortality.

Results. A total of 128 patients were included. The median age was 55 years. Total relapse/recurrence rate was 8% and all-cause mortality within 3 months was 16%. We found no significant difference in overall outcome between patients who had deep vs. superficial thrombosis. Patients with superficial thrombosis were found to have higher rate of pulmonary complications (25% vs. 6%; $P = 0.01$) compared with those with deep thrombosis. Patients who received less than 28 days of intravenous antibiotic therapy had higher all-cause mortality (31 vs. 5% $P = 0.001$). A multivariate logistic regression analysis identified two independent predictors of treatment failure: presence in the ICU at any point during their illness (odds ratio (OR) = 2.74, 95% confidence interval (CI) = 1.08–6.99, $P = 0.034$) and not receiving anticoagulation (OR = 0.24, 95% CI = 0.11–0.54, $P < 0.001$).

Conclusion. Intravenous antimicrobial therapy for 28 days or longer carries a survival advantage over shorter duration of therapy and anticoagulation as an adjunctive treatment is an independent predictor of successful antimicrobial therapy.

Disclosures. I. Raad, The University of Texas MD Anderson Cancer Center: Shareholder, Licensing agreement or royalty. The University of Texas MD Anderson Cancer Center: Shareholder, Dr. Raad is a co-inventor of the Nitroglycerin-Citrate-Ethanol catheter lock solution technology which is owned by the University of Texas MD Anderson Cancer Center (UTMDACC) and has been licensed to Novel Anti-Infective Technologies LLC, in which UTMDACC and Licensing agreement or royalty.

2100. Nitroglycerin-Citrate-Ethanol Catheter Lock Solution Is Highly Effective in Eradicating *Candida auris* Biofilms

Joel Rosenblatt, PhD¹; Ruth Reitzel, PhD²; Nylev Vargas-Cruz, BS³; Ray Y. Hachem, MD³; Anne-Marie Chaftari, MD³; Rita Wilson Dib, MD³; Dimitrios P. Kontoyiannis, MD, ScD, PhD (Hon), FACP, FIDSA, FECMM, FAAM³ and Issam Raad, MD³; ¹1515 Holcombe - Suite FCT12.6030, UT MD Anderson Cancer Center, Houston, TX, ²Infectious Diseases, Infection Control and Employee Health, University of Texas MD Anderson Cancer Center, Houston, TX, ³Department of Infectious Diseases, University of Texas MD Anderson Cancer Center, Houston, TX, ⁴University of Texas MD Anderson Cancer Center, Houston, TX, ⁵Department of Infectious Diseases Infection Control and Employee Health, The University of Texas MD Anderson Cancer Center, Houston, TX

Session: 234. Healthcare Epidemiology: Device-associated HAIs
Saturday, October 6, 2018: 12:30 PM

Background. Blood stream infections due to *Candida auris* is a significant public health concern due to increased patient mortality, frequent misidentification, and high rates of antifungal resistance. *C. auris* is known to be azole resistant, however several strains have been identified with elevated MICs to all classes of antifungals. Current treatment options for a pan-resistant strain of *C. auris* would be extremely challenging. Previously we have shown that non-antibiotic, Nitroglycerine + Citrate + Ethanol (NiCE) lock solution was highly efficacious in eradicating various species of multi-drug-resistant *Candida*. In this study we compared the efficacy of NiCE with standard of care antifungals commonly used in lock solutions in eradicating *C. auris* biofilms.

Methods. Biofilm eradication of *C. auris* was evaluated in 10 strains. *Candida auris* biofilm was grown on silicone discs for 24 hours. Discs were then washed to remove any non-adherent organisms and exposed for 2 hours to various antifungal lock solutions including NiCE, Echinocandins, Azoles, and Amphotericin B. Discs were exposed to Muller-Hinton broth as a control. Subsequently discs were sonicated for 15 minutes in 5 mL of saline and quantitatively cultured onto sabouraud dextrose agar. Plates were incubated at 37°C for 48 hours and counted for growth. All testing was conducted with 6 replicates.

Results. NiCE and Caspofungin were significantly more effective in eradicating *C. auris* biofilms compared with control ($P = 0.002$ and 0.008 , respectively). However, Caspofungin failed to eradicate a few strains of *C. auris* biofilm while NiCE completely eradicated all 10 strains. Micafungin, Anidulafungin, Fluconazole, and Voriconazole were not significantly different than control ($P > 0.05$) for all strains.

Conclusion. NiCE catheter lock solution was capable of completely eradicating all *C. auris* biofilms within 2 hours indicating high potential for preventing CRBSI caused by *C. auris*. Caspofungin eradicated some strains of *C. auris* biofilm, but failed to eradicate all. Other commonly used antifungals were no different than control. Future clinical studies to verify these findings need to be conducted.

Disclosures. D. P. Kontoyiannis, Merck: Consultant, Research support and Speaker honorarium; Pfizer: Consultant, Research support; Astellas: Consultant, Research support and Speaker honorarium; Gilead: Speaker's Bureau, Speaker honorarium; F2G Inc: Speaker's Bureau, Speaker honorarium; Cidara Inc.: Speaker's Bureau, Speaker honorarium; Jazz Pharmaceuticals: Speaker's Bureau, Speaker honorarium. I. Raad, The University of Texas MD Anderson Cancer Center: Shareholder, Licensing agreement or royalty; The University of Texas MD Anderson Cancer Center: Shareholder, Dr. Raad is a co-inventor of the Nitroglycerin-Citrate-Ethanol catheter lock solution technology which is owned by the University of Texas MD Anderson Cancer Center (UTMDACC) and has been licensed to Novel Anti-Infective Technologies LLC, in which UTMDACC and Licensing agreement or royalty.

2101. Catheter-related Infections Complicating Central Venous Catheter Access Device Insertion: A Retrospective Audit and Comparison of Two Cohorts

Anne Hoey, BSc BMBS DTM&H MSc^{1,2}; Milan Edinger-Reeve, MBBS²; Melissa Anshaw, BN³; Hubert Chan, MBBS¹ and Pamela Konecny, MBBS MD MPH DTM&H FRACP FACHSHM^{1,2}; ¹Department of Infectious Diseases, Immunology and Sexual Health, St George Hospital, Sydney, Australia, ²St George and Sutherland Clinical School, University of New South Wales, Sydney, Australia, ³Medical Imaging, St George Hospital, Sydney, Australia

Session: 234. Healthcare Epidemiology: Device-associated HAIs
Saturday, October 6, 2018: 12:30 PM

Background. Central venous access devices (CVAD) are essential for long-term intra-venous treatment of malignancies and other conditions. Catheter-related infections (CRI) complicate long-term CVAD use at rates between 1.5 and 5%, resulting in significant morbidity and mortality. Current evidence does not support a role for antibiotic prophylaxis pre-insertion. We aim to determine rates of CRIs complicating CVAD insertions by vascular surgery and interventional radiology in a single institution and examine the role of antibiotic prophylaxis in prevention.

Methods. A retrospective audit was carried out on CVAD insertions (tunnelled central venous catheter (CVC) or subcutaneous port) by the Vascular Surgery and Radiology Departments at a tertiary teaching hospital in Sydney, Australia from January 2014 to December 2016. Data were collected on patient demographics, antibiotic prophylaxis, skin preparation and CRIs. Rates of CRIs were compared by chi-square test ($\alpha 0.05$).

Results. Ninety-five (11 tunnelled CVC; 84 subcutaneous ports) and 222 (21 tunnelled CVC; 201 subcutaneous ports) CVAD insertions were performed by vascular surgery and radiology, respectively. Median age was 56 years (IQR 48–66) in the vascular cohort and 64 years (IQR 55–72) in the radiology cohort. Females were predominant in both vascular (70; 73.7%) and radiology (119, 53.6%) cohorts and the most common indication was chemotherapy (vascular 84; 88.4% and radiology 205; 92.8%, $n = 1$ missing). Antibiotic prophylaxis was used in 88 (92.6%) vascular insertions but only 2 (0.95%, $n = 12$ missing) insertions by radiology. Iodine skin preparation was preferred for vascular insertions (92; 98.9%, $n = 2$ missing) compared with chlorhexidine for radiology insertions (214; 97.7%, $n = 3$ missing). CRIs occurred in 4 (4.2%) of the vascular cohort and 8 (3.6%) of radiology cohort ($P = 0.80$).

Conclusion. Rates of CRIs complicating CVAD procedures were similar in a vascular cohort where most received antibiotic prophylaxis, and in a radiology cohort where antibiotic prophylaxis was rarely used. There was no evidence to support antibiotic prophylaxis in prevention of CRIs, although choice of skin preparation and other factors may have confounded findings.

Disclosures. All authors: No reported disclosures.

2102. Peripherally Inserted Central Catheter (PICC) Placement: Indications and Financial Impact

Nicholas Cheronis, MD, MPH¹; Shawn Vietmeyer, BSN, RN, NE-BC²; Shelly McGonial, RN²; Susan Kriznik, RN, CIC²; Nitin Bhanot, MD, MPH³ and Zaw Min, M.D, FACP⁴; ¹Infectious Disease, Allegheny Health Network, Pittsburgh, Pennsylvania, ²Allegheny General Hospital, Pittsburgh, Pennsylvania, ³Infectious Disease, Allegheny General Hospital, Pittsburgh, Pennsylvania, ⁴Division of Infectious Disease, Allegheny General Hospital/Allegheny Health Network, Pittsburgh, Pennsylvania

Session: 234. Healthcare Epidemiology: Device-associated HAIs
Saturday, October 6, 2018: 12:30 PM

Background. Although PICCs are important for venous access, they pose risk of infection, venous thrombosis, and are costlier relative to other forms of vascular access. We conducted a preliminary quality improvement study to assess the indications for PICC placement at our institution and also to evaluate the associated healthcare cost.

Methods. We obtained data on all PICCs placed by the vascular access team over a representative 2-month period (November and December 2017) at Allegheny General Hospital. Indications entered during order entry for PICC placement were collected. Additionally, charts of all central line-associated blood stream infections (CLABSI) in 2017 were reviewed to determine the number of events where PICC may have been implicated. We calculated the cost incurred for PICC placement and that for treating infection in PICC-associated CLABSI. The cost of each PICC insertion is about \$4,700 and that of each CLABSI approximates \$25,000.

Results. A total of 451 PICCs were inserted over the 2-month period. Documented indications for PICC insertion included: "poor venous access" (128, 28.3%), "receiving high-risk drugs" (91, 20%), "requires multiple simultaneous IV infusions" (84, 18.6%), "needed upon discharge for long-term use" (63, 13.9%), and "receiving vasopressors, total parental nutrition or chemotherapy" (61, 13.6%). There was no indication described for 23 PICC orders (5.2%). Twenty-five CLABSI were encountered in 2017; 10 of them were PICC associated. Of those, PICC was not absolutely indicated in two patients based on chart review (with cost burden of about \$65,000 in these two instances).

Conclusion. Poor venous access and multiple IV infusions are not absolute indications for PICC insertion in most circumstances. In our study, this amounted to nearly half (212/451) of the indications for PICC placement. Our hospital could have potentially saved a million dollars in the 2-month study period if PICCs were not placed for these indications. Given the costs and risks associated with PICC use, alternative venous access devices should be strongly considered. By rigorously reevaluating indications for PICC use we may improve both patient outcomes and reduce healthcare costs.

Disclosures. All authors: No reported disclosures.