

Serum Creatinine in Pregnancy: A Systematic Review



Kate Wiles¹, Kate Bramham², Paul T. Seed¹, Catherine Nelson-Piercy³, Liz Lightstone⁴ and Lucy C. Chappell¹

¹Department of Women and Children's Health, King's College London, London, UK; ²Department of Renal Medicine, King's College Hospital, London, UK; ³Guy's and St. Thomas' NHS Foundation Trust and Imperial Healthcare NHS Trust, London, UK; and ⁴Section of Renal Medicine and Vascular Inflammation, Imperial College London, London, UK

Introduction: Standard assessment of renal function in pregnancy is by measurement of serum creatinine concentration yet normal gestational ranges have not been established. The aim of this systematic review was to define the difference in serum creatinine in a healthy pregnancy compared with concentrations in nonpregnant women to facilitate identification of abnormal kidney function in pregnancy.

Methods: Medline, PubMed, Embase, Web of Science, theses, key obstetric texts, and conference proceedings were searched to July 2017. Eligible studies included quantification of serum creatinine concentration in a pregnant cohort, with either a reported local laboratory reference range or matched quantification in a nonpregnant cohort. The outcomes of interest were the mean and upper reference limits for creatinine in pregnancy, measured as a ratio of pregnant:nonpregnant values. Study heterogeneity was examined by meta-regression analysis.

Results: Forty-nine studies were identified. Data synthesis included 4421 serum creatinine values in pregnancy, weighted according to cohort size. Mean values for serum creatinine in pregnancy were 84%, 77%, and 80% of nonpregnant mean values during the first, second, and third trimesters, respectively. The 97.5th centile (upper limit of the 95% reference range) for serum creatinine in pregnancy was 85%, 80%, and 86% of the nonpregnant upper limit in sequential trimesters.

Conclusion: Based on a nonpregnant reference interval of 45–90 $\mu\text{mol/l}$ (0.51–1.02 mg/dl), a serum creatinine of $>77 \mu\text{mol/l}$ (0.87 mg/dl) should be considered outside the normal range for pregnancy. Future work can use this value to explore correlation of adverse pregnancy outcomes with serum creatinine concentration. PROSPERO registration: CRD42017068446

Kidney Int Rep (2019) 4, 408–419; <https://doi.org/10.1016/j.ekir.2018.10.015>

KEYWORDS: creatinine; kidney function; pregnancy; renal function

© 2018 International Society of Nephrology. Published by Elsevier Inc. This is an open access article under the CC BY-NC-ND license (<http://creativecommons.org/licenses/by-nc-nd/4.0/>).

Outside of pregnancy, glomerular filtration rates (GFRs) are routinely estimated from serum creatinine concentrations using standardized equations, facilitating the diagnosis of chronic kidney disease and grading of disease severity. Such equations use demographic and clinical variables to correct for physiological factors that affect serum creatinine. However, in pregnancy, estimated GFRs inconsistently underestimate renal function and should not be used.¹ Estimated GFR calculations based on Modified Diet in Renal Disease calculations underestimate GFR in pregnancy by up to 41 ml/min per 1.73 m² compared with inulin clearance.² Even in women with preeclampsia

and contracted maternal plasma volume, estimated GFR remains inaccurate when derived by both Modified Diet in Renal Disease and Chronic Kidney Disease Epidemiology Collaboration methods, compared with inulin and creatinine clearance.^{2,3}

Serum creatinine concentration, therefore, remains the only standard, single-point assessment for kidney function in pregnant populations, yet a normal range for serum creatinine in pregnancy has not been established. The upper limit (95th–97.5th centile) of creatinine concentration in healthy pregnancy varies between published cohorts. Reference range limits include values of 72 $\mu\text{mol/l}$ (0.81 mg/dl),⁴ 80 $\mu\text{mol/l}$ (0.90 mg/dl),⁵ 89 $\mu\text{mol/l}$ (1.00 mg/dl),⁶ and 95 $\mu\text{mol/l}$ (1.07 mg/dl).⁷ Such data have limited generalizability without correction for factors known to cause variance in serum creatinine, including ethnicity, gestation, and the use of different creatinine assay methods. The most widely cited study of trimester-specific creatinine

Correspondence: Kate Wiles, Department of Women's and Children's Health, 10th Floor North Wing, St. Thomas' Hospital, London SE1 7EH, UK. E-mail: kate.wiles@kcl.ac.uk

Received 9 August 2018; revised 18 October 2018; accepted 22 October 2018; published online 29 October 2018

concentration includes only 29 healthy pregnant women.⁷ Contemporaneous statements regarding creatinine concentration in pregnancy are largely based on expert opinion, including a “normal” range of 35 to 71 $\mu\text{mol/l}$ (0.40–0.80 mg/dl),^{8,9} an “average” creatinine in pregnancy of 53 $\mu\text{mol/l}$ (0.60 mg/dl),¹⁰ and a recommendation that serum creatinine in pregnancy greater than 75 $\mu\text{mol/l}$ (0.85 mg/dl) should raise suspicion of kidney injury.¹¹

We report here a systematic review of studies including serum creatinine concentrations in healthy pregnancy. Serum creatinine concentrations measured in pregnant cohorts were compared with either a local laboratory reference interval or with creatinine concentrations derived from a matched nonpregnant cohort. The objective of the study was to compare serum creatinine concentration in pregnancy (“exposed” cohort) with nonpregnant (“unexposed”) via calculation of a ratio of pregnant:nonpregnant serum creatinine. The hypothesis of the study was that serum creatinine concentrations in pregnancy can be estimated as a proportion of matched nonpregnant values, thereby eliminating variation due to assay method and ethnicity, and allowing generation of generalizable normal reference ratios for serum creatinine concentration in pregnancy.

METHODS

Data sources and searches were conducted by 2 authors with training in (KW, KB), and experience of (KB) systematic review methodology. Medline, PubMed, and Embase were searched for first publication to July 2017. Search terms included creatinine, glomerular filtration, GFR, MDRD, Cockcroft, renal function, kidney function, biochemistry, clinical chemistry in combination with pregnan\$, trimester, gestat\$. Specific search strategies are detailed in the [Supplementary Material](#). A search of conference proceedings specific to the field of obstetrics and gynecology, as classified by Web of Science, was also completed. A hand search was undertaken of key English obstetric textbooks for creatinine reference ranges in pregnancy and the sources for these data were included where available. A search for academic theses relevant to pregnancy was performed via [proquest.com](#) and [ethos.bl.uk](#).

Citations were independently screened by 2 authors (KW, KB) based on the title and abstract. Non-English language articles were included if a translation of the abstract into English was available. A full-text review was carried out on all eligible studies, and where eligibility was uncertain from the title or abstract. If a control population was not reported, study authors were contacted to provide relevant local laboratory reference ranges for the creatinine assay used at the time their study was conducted.

Only studies reporting a local laboratory serum creatinine concentration reference interval or cohort data from a nonpregnant population, and including a measure of data spread across the cohort (SD, SE, interquartile range, centile, or normal range) were eligible. Gestational age at the time of serum creatinine measurement was required for analysis of creatinine data according to trimester. Studies that included pregnant women with kidney disease (upper reference range for creatinine in control population $>125 \mu\text{mol/l}$ [1.41 mg/dl]), vascular disease, diabetes, and adverse pregnancy outcome including preeclampsia, were excluded. Any study that did not adequately describe the health of population studied was excluded, as “normality” in the population could not be presumed. Studies were also excluded if serum creatinine concentrations were assessed in a nonpregnant cohort at less than 6 weeks postpartum.

Methodological quality of the studies was scored using the Newcastle-Ottawa scale for observational cohort studies.¹² This included measures of how representative both the pregnant and nonpregnant cohorts were of “average” women of childbearing age in the community, the exclusion of chronic kidney disease, and whether data were adequately controlled for pregnancy pathology including preeclampsia.

Data were extracted in duplicate by 2 authors (KW, KB) working independently using a proforma based on the study inclusion criteria. Author, publication year, study type (longitudinal/cross-sectional), ethnicity, laboratory method for determination of serum creatinine, definition of control population, definition of normal pregnancy, gestation in weeks, and creatinine values including measures of data spread (SD/SE or centile) were recorded. Where cohort ethnicity was not given, black and nonblack ethnicity was assigned based on the population demographic of the country in which the study took place. Disagreements were resolved by discussion between 2 authors (KW, KB), with arbitration from a third author (LC).

We defined exposure as pregnancy, and gestation at sample collection was recorded. To enable comparison, creatinine measures were converted from mg/dl to $\mu\text{mol/l}$ using a conversion factor of 88.42.

A normal distribution of serum creatinine concentrations was assumed based on previously published cohort data both in nonpregnant^{13–16} and pregnant^{6,17} cohorts. Mean creatinine concentrations in the pregnant and nonpregnant cohorts were extracted from the raw data, or derived from the median or reference range on the assumption of a normal distribution. Similarly, creatinine reference intervals for both pregnant and nonpregnant cohorts were obtained from the

available raw data or a 97.5th centile (upper limit of the 95% reference range) was calculated as the mean value + 1.96 SDs.

Data were divided by trimesters of pregnancy (<13 weeks, 13–26 weeks, >26 weeks of gestation). Where a range of gestation was included within the data, data were allocated to the trimester for which the gestational range was most representative. If studies included more than 1 measure of creatinine in the same trimester, mean values for each trimester were calculated. Mean and upper reference values for creatinine concentration in pregnancy were converted to a proportion (percentage) of the equivalent value from either the nonpregnant cohort described in each study, or the mean and upper reference limit of the given local reference range. A bootstrapping method (described later in this article) was then used to provide a combined estimate for each trimester.

Statistical analysis was performed using Stata version 14.2 (StataCorp, College Station, TX). We used the calculation of the I^2 statistic^{18,19} to test for heterogeneity

in the pregnant:nonpregnant ratio between studies. Where heterogeneity was found, meta-regression was used to assess whether the differences between studies were due to the use of cross-sectional data, year of publication, the specific exclusion of renal disease, Jaffe and enzymatic methods of creatinine measurement, or black ethnicity. This was done by separate linear regression of each variable, in each trimester, with impact on the pregnant:nonpregnant creatinine ratio measured as a coefficient value. Year of publication was analyzed as a continuous measure and by conversion to decade. Analytic weights were defined by Stata.

The calculation of pregnant:nonpregnant creatinine ratios meant that SE measurements were not available, with no accepted method to estimate this quantity from summary data. The complexity of determining the variance and distribution of a ratio value meant we were unable to use most standard meta-analysis techniques including DerSimonian and Laird estimates of the combined effect, Forest plots, and an assessment of publication bias.²⁰ Data from the included studies were therefore synthesized using a bootstrapping technique. This

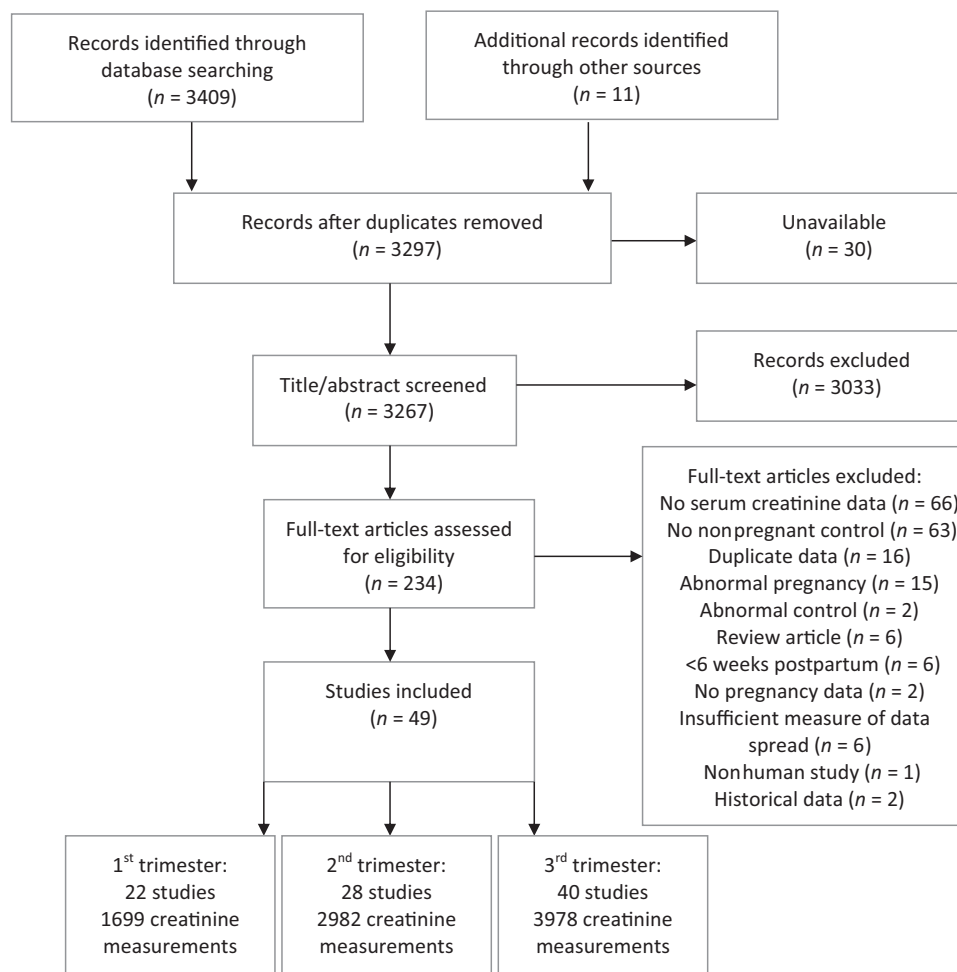


Figure 1. Flow diagram of the identification process for eligible studies.

involved repeat sampling (10,000 repetitions) with each study acting as a single observation. Bootstrapping was informed by the assessment of heterogeneity and the results of the meta-regression. Heterogeneity between studies was high ($I^2 > 99\%$). The inclusion of studies using a reference range as the nonpregnant comparator revealed an irreconcilable heterogeneity of data, which prevented meaningful synthesis. Heterogeneity was, however, reduced ($I^2 = 12.3$) when the pregnant:nonpregnant ratio was examined using studies with a large (> 100 women) nonpregnant cohort. Meta-regression revealed the importance of pregnant cohort size. The bootstrapping technique, therefore, included all studies with a nonpregnant cohort, weighted according to the product of the geometric mean of pregnant and nonpregnant cohort size. Bias-corrected confidence intervals were generated using an automatic algorithm, which estimates and corrects for bias in the sampling process.²¹

This systematic review was registered on the PROSPERO database with registration number CRD42017068446.

RESULTS

Electronic searching identified 3297 unique citations including 11 sources identified by hand searching of textbooks. Of the 3267 available sources, we excluded 3033 sources on the basis of title and abstract review. Most excluded articles were studies of urinary creatinine concentration in pregnancy usually performed as part of a urinary protein:creatinine ratio in preeclampsia, and did not include serum creatinine measurement. Studies of amniotic, fetal, or neonatal creatinine measurement were also excluded. A further 185 sources were excluded after full-text review (Figure 1). Four studies were included after contacting the authors to provide local laboratory reference ranges at the time of their study.

Forty-nine studies were included in the analysis. Study characteristics, including reference details, ethnicity, study type, sample size, trimester-specific creatinine measurements, creatinine assay method, assessment of normal pregnancy, and the Newcastle-Ottawa assessment of study quality are reported in Table 1.

Median pregnant cohort sizes were 40, 40, and 35 in the first, second, and third trimesters, respectively (interquartile range 17–67). Of the 49 included studies, only 9 had creatinine concentrations from more than 100 women within the same trimester. Detail regarding the specific exclusion of renal disease was made in 22 studies.

Nonpregnant control cohorts were the “unexposed” comparator in 39 studies. The median nonpregnant cohort size was 19 women (interquartile range 13–52). Only 3

studies included more than 100 nonpregnant women in the control cohort. Serum creatinine in pregnancy was compared to a laboratory reference interval in 10 studies. No details were available regarding how these laboratory reference intervals had been derived and whether they were specific to a female population.

Most studies had limited reporting of creatinine assay methods. Creatinine was quantified using the Jaffe reaction in 24 studies and by a kinetic enzymatic reaction in 11 studies. Assay method was not available for 14 studies. Interassay precision was reported in only 10 studies. No studies documented whether creatinine assay methods were traceable to an isotope dilution mass spectrometry reference, according to current recommendation.²²

Study quality was variable. In 19 of the 49 studies, “normal” pregnancy was confirmed after completion of the pregnancy, with exclusion of data from women who experienced an abnormal pregnancy. However, quality scores ranged from 4 to 9 on the Newcastle-Ottawa scale based on selection, comparability, and outcome. Based on previously described thresholds for quality assessment,²³ only 11 of the 49 studies were classified as “good” quality for this systematic review.

Meta-regression demonstrated that the size of the pregnant cohort had a significant impact on the pregnant:nonpregnant creatinine ratio across all 3 trimesters. The use of cross-sectional data, year and decade of publication, the specific exclusion of renal disease, creatinine assay method, and black ethnicity showed no significant effect on the ratio result (Table 2).

Data synthesis included all studies that had a matched pregnant control cohort as the nonpregnant comparator. This included 816 creatinine values (19 studies) from the first trimester, 1183 creatinine values (22 studies) from the second trimester, and 2422 creatinine values (30 studies) from the third trimester. Mean values for serum creatinine in pregnancy were 84% (95% confidence interval 76%–90%), 77% (72%–83%), and 80% (77%–84%) of mean values outside of pregnancy during the first, second, and third trimesters, respectively. Using the 97.5th centile (upper limit of the 95% reference range), serum creatinine in pregnancy was 85% (76%–93%), 80% (73%–89%), and 86% (83%–89%) of the upper reference limit for nonpregnant women in sequential trimesters (Table 3, Figure 2).

DISCUSSION

Data synthesis from this systematic review creates a mean and upper reference limit for serum creatinine in pregnancy, compared with nonpregnant values. Mean serum creatinine in pregnancy is 77% to 84% of mean values outside of pregnancy, and the reference limit for

Table 1. Study characteristics

Author	Year	Country/Ethnicity	Longitudinal or cross-sectional	Control			Trimester 1	
				n	Mean Cr	ULN	n	Mean Cr
Afolabi ³⁸	2011	Nigeria	C	15	58 [0.65]	80 [0.90]		
Akbari ³⁹	2005	Canada	C	13	74 [0.84]	86 [0.97]		
Al-Kuran ⁴⁰	2012	Jordan	L	LRR	70 [0.79]	96 [1.10]	797	67 [0.76]
Babay ⁴¹	2005	Saudi Arabia	C	40	58 [0.66]	71 [0.80]	54	56 [0.63]
Babu ⁴²	2013	India	C	LRR	71 [0.80]	78 [0.88]		
Chapman ²⁸	1998	WE:AC= 10:1	L	13	71 [0.80]	88 [1.00]	10	65 [0.74]
Collins ⁴³	1981	Canada	C	65	71 [0.80]	88 [1.00]		
Davison ²⁵	1980	UK	L	10	69 [0.78]	104 [1.18]		
Davison ²⁶	1981	UK	L	9	72 [0.81]	85 [0.96]	9	64 [0.72]
Djordjevic ⁴⁴	2004	Serbia-Montenegro	L	30	61 [0.69]	83 [0.94]	30	65 [0.74]
Duvekot ⁴⁵	1995	Netherlands	L	10	56[0.63]	63 [0.71]	10	53 [0.60]
Fasshauser ⁴⁶	2008	Germany	C	LRR ^c	76 [0.86]	104 [1.18]		
Fasshauser ⁴⁷	2008	Germany	C	LRR ^c	76 [0.86]	104 [1.18]		
de Flamingh ⁴⁸	1984	South Africa	C	16	74 [0.84]	88 [1.00]	10	61 [0.69]
Girling ⁶	2000	47% WE, 21% AC, 10% Med	C	LRR ^c	88 [1.00]	120 [1.36]	20	68 [0.77]
Guo ⁴⁹	2012	China	L	LRR ^c	89 [1.00]	115 [1.30]		
Hanna ⁵⁰	2009	Iraq	C	40	84 [0.95]	121 [1.37]	40	83 [0.94]
Heguilén ⁵¹	2007	Argentina	C	8	82 [0.93]	102 [1.15]		
Iqbal ⁵²	2003	Pakistan	C	26	72 [0.81]	89 [1.01]	18	65 [0.74]
Järfelt-Samsioe ^{53,d}	1985	Sweden	C	LRR	80 [0.90]	110 [1.24]		
Jaing ⁵⁴	2013	Italy	C	19	53 [0.70]	66 [0.75]		
Kametas ^{55,e}	2003	Peru	C	13–15	55–63 [0.62–0.71]	68–80 [0.77–0.90]		
Klajnbard ⁵⁶	2010	Denmark (WE)	L	LRR	70 [0.79]	90 [1.02]		
Knopp ⁵⁷	1985	USA (WE)	C	77	67 [0.76]	88 [1.00]		
Koetje ¹	2011	Netherlands (WE)	C	44	69 [0.78]	91 [1.03]	44	58 [0.66]
Kristensen ¹⁷	2007	Sweden	C	58	65 [0.74]	82 [0.93]	94	53 [0.60]
Kristensen ⁵⁸	2007	Sweden	C	58	65 [0.74]	82 [0.93]		
Lain ⁵⁹	2005	USA	L	63	50 [0.57]	92 [1.04]	63	51 [0.58]
Larsson ⁴	2008	Sweden	L	51	67 [0.76]	86 [0.97]	50	49 [0.55]
Lockitch ⁷	1993	Majority WE	L	121	73 [0.83]	94 [1.06]	29	52 [0.59]
Lohsirirwat ⁶⁰	2008	Thailand	L	26	72 [0.82]	90 [1.02]		
Mahendru ⁶¹	2014	91% WE	L	54	68 [0.77]	88 [1.00]	54	53 [0.60]
Majewska ⁶²	2010	Poland	L	40	72 [0.81]	94 [1.06]	40	50 [0.56]
Makuyana ⁶³	2002	Zimbabwe	C	LRR	78 [0.88]	121 [1.37]		
Matteucci ⁶⁴	1997	Italy	L	18	82 [0.93]	102 [1.15]	18	64 [0.72]
Milman ⁶⁵	2007	Denmark	L	164	75 [0.85]	96 [1.09]		
Milne ⁶⁶	2002	UK (WE)	L	11	65 [0.74]	95 [1.07]		
Miri-Dashe ⁶⁷	2014	Nigeria	C	127	79 [0.89]	118 [1.33]	43 ^f	46 [0.52]
Ogueh ⁶⁸	2011	UK	L	13	88 [1.00]	107 [1.21]	12	78 [0.88]
Pahl ⁶⁹	2001	USA	C	15	67 [0.76]	83 [0.94]		
Roberts ²⁷	1996	UK (WE)	L	11	74 [0.84]	88 [1.00]		
Saxena ⁷⁰	2012	USA	L	12	71 [0.8]	101 [1.14]		
Schoenmakers ⁷¹	2013	Gambia	C	10	59 [0.67]	89 [1.00]		
Siddiqui ⁷²	1993	Pakistan	C	30	69 [0.79]	88 [1.00]		
Strevens ⁷³	2002	Sweden	C	12	61 [0.69]	83 [0.94]		
Van Buul ⁷⁴	1995	Netherlands	L	LRR	70 [0.79]	90 [1.02]	66	59 [0.67]
Vural ⁷⁵	1998	Turkey	C	15	63 [0.72]	95 [1.07]		
de Weerd ^{76,g}	2003	Netherlands	L	96	70 [0.79]		188	62 [0.70]
Weissberg ⁷⁷	1991	Israel	C	9	77 [0.87]	92 [1.04]		

Creatinine values are given as μmol/l [mg/dl].

AC, Afro-Caribbean; Cr, creatinine; LRR, laboratory reference range; Med, Mediterranean; ULN, upper limit of normal; WE, white European.

^aAssessment of pregnancy normality: 1 = limited data, 2 = exclusion of comorbidity associated with abnormal renal function, e.g., preeclampsia, diabetes, vascular disease, 3 = specific exclusion of renal disease,

^bbut not excluded from study data.

^cProvided by study author/center or available from an alternative source and appropriate for date of study.

^dWomen with emesis excluded from extracted data.

^eIncludes 2 study cohorts at different altitude.

^fTotal 131 pregnant women, distribution between trimesters not recorded.

^gMean creatinine data only, upper limit data not derived from interquartile range.

Table 1. (Continued)

Trimester 1	Trimester 2			Trimester 3			Creatinine assay method	Assessment of pregnancy normality ^a	Normal pregnancy outcome confirmed	Newcastle-Ottawa grade	
	ULN	n	Mean Cr	ULN	n	Mean Cr					ULN
		9	61 [0.69]	93 [1.05]	3	57 [0.64]	104 [1.18]	Jaffe	1		6
		68	52 [0.59]	69 [0.78]	68	54 [0.61]	78 [0.88]	Not stated	2		7
97 [1.10]	797	64 [0.72]	100 [1.13]	797	72 [0.81]	132 [1.4]	Jaffe	2			6
75 [0.85]	53	57 [0.64]	81 [0.92]	50	52 [0.59]	70 [0.79]	Not stated	3	Yes		8
				25	52 [0.59]	70 [0.79]	Not stated	3			4
77 [0.87]	8	53 [0.60]	73 [0.83]	8	49 [0.55]	68 [0.77]	Jaffe	3			8
				350	53 [0.60]	71 [0.80]	Jaffe	1			6
				10	60 [0.68]	104 [1.18]	Enzymatic	3	Yes		9
77 [0.87]	9	57 [0.64]	69 [0.78]				Enzymatic	3	Yes ^b		8
91 [1.03]							Not stated	1			7
68 [0.77]							Not stated	1	Yes		6
				20	55 [0.62]	79 [0.89]	Not stated	1			5
				20	54 [0.61]	79 [0.89]	Not stated	3			5
75 [0.85]	10	55 [0.62]	71 [0.80]	40	54 [0.61]	93 [1.05]	Not stated	3			4
84 [0.95]	271	63 [0.71]	125 [1.41]	68	54 [0.61]	97 [1.10]	Jaffe	3			6
	96	42 [0.48]	52 [0.59]	96	54 [0.61]	70 [0.79]	Jaffe	3			4
118 [1.33]	40	75 [0.85]	94 [1.06]	40	54 [0.61]	92 [1.04]	Jaffe	3			7
	5	66 [0.75]	88 [1.00]				Not stated	3			4
95 [1.07]	22	70 [0.79]	94 [1.07]	23	69 [0.78]	94 [1.06]	Jaffe	1			6
	37	68 [0.77]	94 [1.06]	34	66 [0.75]	94 [1.06]	Not stated	2	Yes ^b		4
				29	42 [0.48]	58 [0.66]	Not stated	1	Yes		7
	77–80	47–56 [0.53–0.63]	58–74 [0.66–0.83]				Jaffe	2	Yes		6
	532	58 [0.66]	73 [0.83]	358	62 [0.70]	84 [0.95]	Enzymatic	2	Yes		7
				546	51 [0.58]	78 [0.88]	Jaffe	1			5
74 [0.84]							Jaffe	2			4
70 [0.79]	107	51 [0.58]	64 [0.72]	88	54 [0.61]	70 [0.79]	Enzymatic	3	Yes ^b		6
				218	53 [0.60]	68 [0.77]	Enzymatic	3	Yes		6
92 [1.04]	63	44 [0.50]	99 [1.12]	63	50 [0.57]	92 [1.04]	Enzymatic	2	Yes		9
62 [0.70]	51	46 [0.52]	62 [0.70]	52	47 [0.53]	72 [0.81]	Jaffe	2	Yes ^b		6
77 [0.87]	29	50 [0.57]	73 [0.83]	29	56 [0.63]	87 [0.98]	Enzymatic	2	Yes		6
				26	64 [0.72]	84 [0.96]	Jaffe	3	Yes		9
69 [0.78]							Not stated	2	Yes		7
63 [0.72]	40	46 [0.52]	60 [0.68]	40	52 [0.59]	75 [0.85]	Not stated	3	Yes		8
				72	52 [0.59]	70 [0.79]	Jaffe	3			6
82 [0.93]	18	62 [0.70]	78 [0.88]	18	65 [0.74]	77 [0.87]	Jaffe	2	Yes		4
	394	55 [0.62]	71 [0.80]	521	58 [0.66]	81 [0.92]	Jaffe	2	Yes		7
				11	75 [0.85]	78 [0.88]	Not stated	3	Yes		9
68 [0.77]	43 ^f	46 [0.52]	59 [0.67]	43 ^f	65 [0.74]	94 [1.06]	Enzymatic	1			6
96 [1.09]	13	77 [0.87]	105 [1.19]	12	74 [0.84]	106 [1.20]	Jaffe	1	Yes		8
	16	64 [0.72]	76 [0.86]				Enzymatic	3			7
	16	54 [0.61]	66 [0.74]	11	53 [0.60]	63 [0.71]	Jaffe	3	Yes		9
	12	53 [0.60]	77 [0.87]	12	62 [0.70]	80 [0.91]	Jaffe	1	Yes		8
				10	74 [0.84]	68 [0.77]	Enzymatic	1			5
				35	49 [0.64]	58 [0.76]	Jaffe	3			7
				14	48 [0.54]	66 [0.75]	Enzymatic	3			6
70 [0.79]	66	59 [0.68]	70 [0.79]	66	59 [0.67]	75 [0.85]	Jaffe	3	Yes		8
				20	61 [0.69]	73 [0.83]	Jaffe	2			4
							Jaffe	2	Yes ^b		6
				32	61 [0.69]	71 [0.81]	Jaffe	1			5

serum creatinine is 80% to 86% of that in nonpregnant women. Based on a normal female range for serum creatinine of 45 to 90 $\mu\text{mol/l}$ (0.51–1.02 mg/dl),²⁴ this

equates to mean serum creatinine values of 56 $\mu\text{mol/l}$ (0.63 mg/dl), 52 $\mu\text{mol/l}$ (0.59 mg/dl), and 54 $\mu\text{mol/l}$ (0.61 mg/dl) in sequential trimesters, whereas serum

Table 2. Meta-regression showing impact of each variable on the pregnant:nonpregnant serum creatinine ratio in the second trimester

Variable	Coefficient	
	(95% confidence interval)	P
Pregnant cohort size ^a	0.026 (0.002 to 0.049)	0.03
Cross-sectional data	0.064 (−0.082 to 0.211)	0.38
Year of publication	−0.003 (−0.013 to 0.007)	0.52
Decade of publication (compared with 2010–2017):		
• 1980	0.218 (−0.333 to 0.377)	0.90
• 1990	−0.044 (−0.300 to 0.211)	0.72
• 2000	0.059 (−0.096 to 0.214)	0.44
Exclusion of renal disease	0.094 (−0.198 to 0.386)	0.52
Enzymatic method for creatinine (compared to Jaffe method)	−0.069 (−0.286 to 0.319)	0.91
Black ethnicity	−0.266 (−0.592 to 0.061)	0.11

The coefficient is a measure of the difference in the pregnant:nonpregnant ratio between studies that can be attributed to that variable.

^aPer 100 women.

creatinine values greater than 76 $\mu\text{mol/l}$ (0.86 mg/dl) in the first trimester, 72 $\mu\text{mol/l}$ (0.81 mg/dl) in the second trimester, and 77 $\mu\text{mol/l}$ (0.87 mg/dl) in the third trimester should be considered to be outside the upper limit of normal for pregnancy. A serum creatinine greater than 77 $\mu\text{mol/l}$ (0.87 mg/dl) in pregnancy should raise the possibility of either acute kidney injury, or undiagnosed chronic kidney disease pre-dating the pregnancy.

As far as we are aware, this is the only study published to date that attempts to offer a value for serum creatinine in pregnancy that is generalizable and not limited to a specific population or creatinine assay technique. The strength of this study is that, through the use of a ratio of pregnant to nonpregnant values, it provides a synthesis of published creatinine data from multiple normal pregnant cohorts, across different ethnicities and assay techniques. Previous reports of creatinine concentration according to gestation are limited by small numbers of women, diverse methodology, and insufficient information about disease states in “normal women.”

The main limitation of this study is in the amount of heterogeneity in the included data. This is likely to

be due to a combination of both study design and clinical factors. The complexity of generating SD or SE values for a ratio value²⁰ means that the precision of each study is not considered in the meta-analysis. In addition, creatinine data are summarized as single value for each trimester, which may fail to adequately represent the true variation in serum creatinine for individual pregnant women, including a progressive physiological adaptation to both early pregnancy and parturition.^{25–28}

Heterogeneity was reduced when the ratio of pregnant:nonpregnant creatinine used a matched nonpregnant cohort, compared with ratios generated from laboratory reference intervals. This is likely due to quantification in a control population being performed over the same time period as the samples taken during pregnancy, conferring less analytical variance and better reproducibility of values.²⁹ In contrast, heterogeneity when using a laboratory reference range as the nonpregnant comparator may have arisen due to baseline differences between the reference and pregnant cohorts, including gender, age, and ethnicity; although there was insufficient information on the generation of the reference intervals in the included studies to allow assessment of this.

Meta-regression showed no significant difference in the pregnant:nonpregnant creatinine ratio related to the use of alkaline picrate (Jaffe) or enzymatic assay methods. This suggests that either the 2 techniques are affected by pregnancy equally, or that differences between assay techniques are insignificant relative to the effect of pregnancy on serum creatinine concentration. However, dichotomization by assay technique may be overly simplistic. This review includes internationally diverse studies, performed over a 34-year period. Although most studies used a Jaffe method, this is known to lack standardization, resulting in significant methodological variation, which is not measurable in this study.³⁰ Confirmation of the findings of this systematic review using isotope dilution mass spectrometry traceable creatinine assay methods²² is warranted.

Table 3. Creatinine in pregnancy as a percentage of nonpregnant value according to trimester

Trimester	First	Second	Third
Number of included studies	19 ^a	22	30
Number of creatinine measures in pregnancy	816 ^a	1183	2422
Mean creatinine in pregnancy as % of nonpregnant mean value (95% CI)	84% (76–90)	77% (72–83)	80% (77–84)
Example mean creatinine ^b	56 $\mu\text{mol/l}$ (0.63 mg/dl)	52 $\mu\text{mol/l}$ (0.59 mg/dl)	54 $\mu\text{mol/l}$ (0.61 mg/dl)
Upper limit creatinine as % of nonpregnant upper limit based on a 95% reference range (95% CI)	85% (76–93)	80% (73–89)	86% (83–89)
Example upper limit creatinine ^b	76 $\mu\text{mol/l}$ (0.86 mg/dl)	72 $\mu\text{mol/l}$ (0.81 mg/dl)	77 $\mu\text{mol/l}$ (0.87 mg/dl)

CI, confidence interval.

^aNineteen studies (816 creatinine measures) inform the mean value and 18 studies (628 creatinine measures) inform the upper limit.

^bExample creatinine values are based on a typical value for nonpregnant women of 67.5 $\mu\text{mol/l}$ (0.76 mg/dl), and an upper limit of 90 $\mu\text{mol/l}$ (1.02 mg/dl).¹²

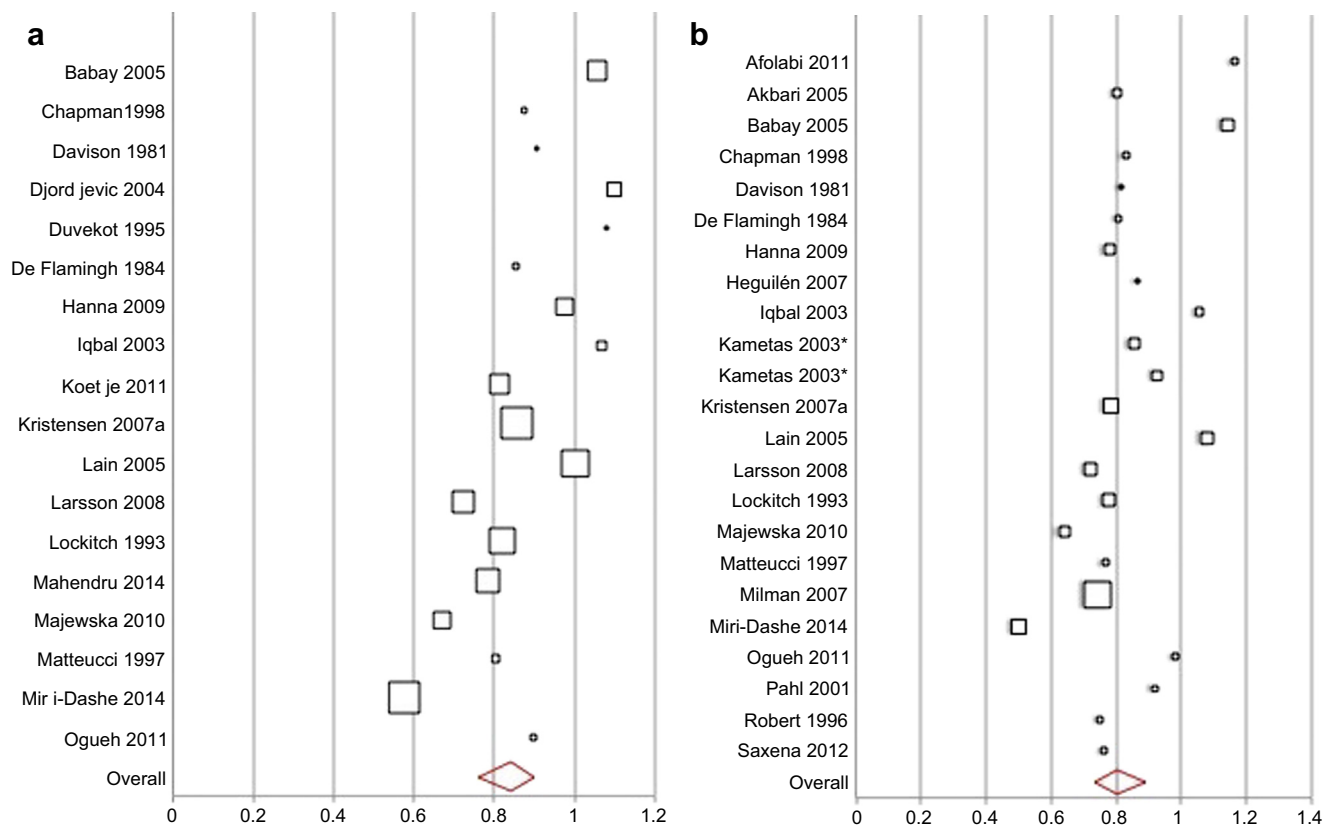


Figure 2. Pregnant:nonpregnant ratio for the upper limit of serum creatinine in the first trimester (a), the second trimester (b), and the third trimester (c). Squares represent the point estimate of the ratio for each study, sized according to the study weight (geometric mean product of pregnant and nonpregnant sample size). Confidence intervals are not available due to the complexity of determining the precision of a ratio value. Overall is the summary value and 95% confidence interval generated by the bootstrapping technique for each trimester. *Two cohorts at different altitudes. (Continued)

The results of this study concur with the known physiological changes of pregnancy; namely a fall in serum creatinine due to gestational hyperfiltration resulting in a 50% increase in creatinine clearance by the second trimester,^{26–28} followed by a decrease in creatinine clearance during the third trimester²⁵ leading to an increase in serum creatinine concentration toward term. This study suggests that the normal range for creatinine in pregnancy is either comparable to,⁴ or lower^{5–7} than that derived from other published cohorts, which are limited by assay method, ethnic differences in creatinine, and small cohort sizes.

The synthesis of data in this study generated a mean value and upper reference range limit for creatinine in pregnancy as a relative proportion of a matched nonpregnant cohort. In practice, clinicians have access to a laboratory reference range for creatinine, rather than a matched control value. For example, at the authors' institution (Guy's and St. Thomas NHS Foundation Trust), the female-specific reference interval for serum creatinine is 45 to 90 $\mu\text{mol/l}$ (0.51–1.02 mg/dl). This is derived from 269 healthy, Red Cross blood donors.²⁴ Although gender specific, this reference interval is not specific for women of childbearing age, as

the reference population is aged 18 to 70 years. However, the use of this reference interval to derive values for childbearing age women can be justified on the basis that an increased prevalence of silent chronic kidney disease with age is potentially counterbalanced by a simultaneous age-related decline in creatinine synthesis,³¹ with minimal effect on absolute serum creatinine values. Indeed, serum creatinine values have been shown to be stable in female, white European populations between the ages of 20 and 70 years.¹⁴ However, the generation of an upper limit for serum creatinine in pregnancy through conversion of a local reference range will always be subject to the limitations under which that reference range was generated, and whether that reference interval is appropriately matched for gender and ethnicity.

Acute kidney injury occurs most commonly during pregnancy in the third trimester, predominantly due to the development of hypertensive disorders and puerperal pathologies including sepsis and hemorrhage.^{32–35} Diagnostic criteria for acute kidney injury do not exist in pregnancy, and up to 40% of pregnancy-associated acute kidney injury may be missed by clinicians in the United Kingdom.³⁶ In this study, the upper

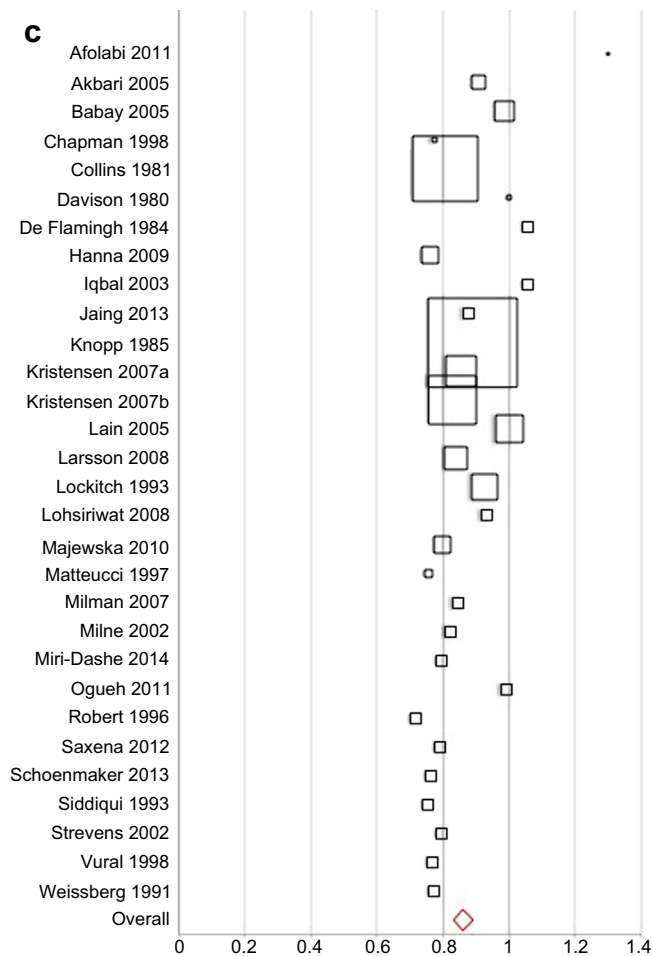


Figure 2. Continued

reference limit for serum creatinine in the third trimester is based on data from 30 studies, including 2422 pregnant women. Based on a nonpregnant upper limit for creatinine of 90 $\mu\text{mol/l}$ (1.02 mg/dl),²⁴ a new serum creatinine of >77 $\mu\text{mol/l}$ (0.87 mg/dl) should trigger investigation for underlying acute kidney injury.

This study generated a mean and upper reference limit for creatinine in pregnancy, as a percentage of that outside of pregnancy. In the absence of both a valid measure of estimated GFR and practical measure of true GFR in pregnancy, the assessment of renal function in pregnant women remains limited to serum creatinine despite confounders, insensitivity, and interassay variability. However, the use of creatinine thresholds of 85%, 80%, and 86% of the upper limit of the nonpregnant reference range for the first, second, and third trimesters, respectively, represents a new and clinically relevant diagnostic parameter, which is potentially generalizable across different cohorts and creatinine assay methods.

A clinically relevant reference interval distinguishes physiology from pathology. The clinical utility of the pathological threshold suggested by this systematic review now requires prospective studies that correlate a

creatinine in pregnancy that is >86% of the upper limit for nonpregnant women with adverse maternal and/or neonatal outcomes. Whether a similar percentage change in serum creatinine in pregnancy is seen in women with chronic kidney disease remains unknown, although a failure of serum creatinine to fall in the first trimester of pregnancy is hypothesized to represent a failure of the renal system to adapt in pregnancy and is used anecdotally as a poor prognostic indicator.³⁷ Future research is required into patterns of serum creatinine change in women with chronic kidney disease who do and do not develop adverse pregnancy outcomes.

DISCLOSURE

KW is funded by the National Institute for Health Research Rare Diseases Translational Research Collaboration (NIHR RD-TRC) and the Biomedical Research Centre at Guy's & St Thomas & King's College London. KB has received consultancy fees from Alexion, and lecture fees from Alexion and Otsuka. CNP has received consultancy fees from Alliance Pharma and UCB, and lecture fees from UCB and Sanofi. LCC is supported by a Research Professorship from the National Institute for Health Research, RP-2014-05-019.

ACKNOWLEDGMENTS

Supported by National Institute for Health Research Rare Diseases Translational Research Collaboration (NIHR RD-TRC) and the Biomedical Research Centre at Guy's & St Thomas & King's College London. The views expressed are those of the authors and not necessarily those of the NHS, the NIHR, or the Department of Health.

SUPPLEMENTARY MATERIAL

Supplementary Material. Electronic search strategy. Supplementary material is linked to the online version of the paper at <http://www.kireports.org>.

REFERENCES

1. Koetje PMJL, Spaan JJ, Kooman JP, et al. Pregnancy reduces the accuracy of the estimated glomerular filtration rate based on Cockcroft-Gault and MDRD formulas. *Reprod Sci*. 2011;18:456–462.
2. Smith MC, Moran P, Ward MK, et al. Assessment of glomerular filtration rate during pregnancy using the MDRD formula. *BJOG*. 2008;115:109–112.
3. Alper AB, Yi Y, Rahman M, et al. Performance of estimated glomerular filtration rate prediction equations in preeclamptic patients. *Am J Perinatol*. 2011;28:425–430.
4. Larsson A, Palm M, Hansson LO, et al. Reference values for clinical chemistry tests during normal pregnancy. *BJOG*. 2008;115:874–881.
5. Abbassi-Ghanavati M, Greer LG, Cunningham FG. Pregnancy and laboratory studies: a reference table for clinicians. *Obstet Gynecol*. 2009;114:1326–1331.
6. Girling JC. Re-evaluation of plasma creatinine concentration in normal pregnancy. *J Obstet Gynaecol*. 2000;20:128–131.

7. Lockitch G. *Handbook of Diagnostic Biochemistry and Haematology in Normal Pregnancy*. Boca Raton: CRC Press; 1993.
8. Fischer MJ. Chronic kidney disease and pregnancy: maternal and fetal outcomes. *Adv Chronic Kidney Dis*. 2007;14:132–145.
9. Maynard SE, Thadhani R. Pregnancy and the kidney. *J Am Soc Nephrol*. 2009;20:14–22.
10. August P. Preeclampsia: a nephrocentric view. *Adv Chronic Kidney Dis*. 2013;20:280–286.
11. Lightstone L. Kidney disease and pregnancy. *Medicine*. 2015;43:550–555.
12. Higgins JPT, Green S, editors. *Cochrane Handbook for Systematic Reviews of Interventions*. Version 5.1.0 [updated March 2011]. The Cochrane Collaboration, 2011. Available at: www.handbook.cochrane.org. Accessed July 30, 2018.
13. Mussap M, Dalla Vestra M, Fioretto P, et al. Cystatin C is a more sensitive marker than creatinine for the estimation of GFR in type 2 diabetic patients. *Kidney Int*. 2002;61:1453–1461.
14. Pottel H, Vrydags N, Mahieu B, et al. Establishing age/sex related serum creatinine reference intervals from hospital laboratory data based on different statistical methods. *Clin Chim Acta*. 2008;396:49–55.
15. Huang M, Yang JJ, Yang JJ, et al. Reference intervals for serum creatinine levels in the healthy geriatric population. *Clin Biochem*. 2013;46:1419–1422.
16. Pottel H, Hoste L, Delanaye P. Abnormal glomerular filtration rate in children, adolescents and young adults starts below 75 ml/min/1.73m². *Pediatr Nephrol*. 2015;30:821–828.
17. Kristensen K, Lindström V, Schmidt C, et al. Temporal changes of the plasma levels of cystatin C, beta-trace protein, beta2-microglobulin, urate and creatinine during pregnancy indicate continuous alterations in the renal filtration process. *Scand J Clin Lab Invest*. 2007;67:612–618.
18. Higgins JP, Thompson SG, Deeks JJ, et al. Measuring inconsistency in meta-analyses. *BMJ*. 2003;327:557–560.
19. Higgins JP, Thompson SG. Quantifying heterogeneity in a meta-analysis. *Stat Med*. 2002;21:1539–1558.
20. Scott A, Wu C. On the asymptotic distribution of ratio and regression estimators. *J Am Stat Assoc*. 1981;76:98–102.
21. DiCiccio T, Efron B. Bootstrap confidence intervals. *Stat Sci*. 1996;11:189–212.
22. Myers GL, Miller WG, Coresh J, et al. Recommendations for improving serum creatinine measurement: a report from the laboratory working group of the national kidney disease education program. *Clin Chem*. 2006;52:5–18.
23. McPhetters ML, Kripalani S, Peterson NB, et al. *Quality Improvement Interventions to Address Health Disparities. Closing the Quality Gap: Revisiting the State of the Science. Evidence Report No. 208*. (Prepared by the Vanderbilt University Evidence-based Practice Center under Contract No. 290-2007-10065.) AHRQ Publication No. 12-E009-EF. Rockville, MD: Agency for Healthcare Research and Quality. Published August 2012. Available at: www.effectivehealthcare.ahrq.gov/reports/final.cfm.
24. Mazzachi BC, Peake MJ, Ehrhardt V. Reference range and method comparison studies for enzymatic and Jaffé creatinine assays in plasma and serum and early morning urine. *Clin Lab*. 2000;46:53–55.
25. Davison JM, Dunlop W, Ezimokhai M. 24-hour creatinine clearance during the third trimester of normal pregnancy. *BJOG*. 1980;87:106–109.
26. Davison JM, Noble MCB. Serial changes in 24 hour creatinine clearance during normal menstrual cycles and the first trimester of pregnancy. *BJOG*. 1981;88:10–17.
27. Roberts M, Lindheimer MD, Davison JM. Altered glomerular permselectivity to neutral dextrans and heteroporous membrane modeling in human pregnancy. *Am J Physiol*. 1996;270:F338–F343.
28. Chapman AB, Abraham WT, Zamudio S, et al. Temporal relationships between hormonal and hemodynamic changes in early human pregnancy. *Kidney Int*. 1998;54:2056–2063.
29. Ross JW, Miller WG, Myers GL, Praestgaard J. The accuracy of laboratory measurements in clinical chemistry: a study of 11 routine chemistry analytes in the College of American Pathologists chemistry survey with fresh frozen serum, definitive methods, and reference methods. *Arch Pathol Lab Med*. 1998;122:587–608.
30. Delanghe JR, Speeckaert MM. Creatinine determination according to Jaffe: what does it stand for? *NDT Plus*. 2011;4:83–86.
31. Shlipak MG, Katz R, Kestenbaum B, et al. Rate of kidney function decline in older adults: a comparison using creatinine and cystatin C. *Am J Nephrol*. 2009;30:171–178.
32. Prakash J, Pant P, Prakash S, et al. Changing picture of acute kidney injury in pregnancy: study of 259 cases over a period of 33 years. *Indian J Nephrol*. 2016;26:262–267.
33. Gopalakrishnan N, Dhanapriya J, Muthukumar P, et al. Acute kidney injury in pregnancy: a single center experience. *Ren Fail*. 2015;37:1476–1480.
34. Hildebrand AM, Liu K, Shariff SZ, et al. Characteristics and outcomes of AKI treated with dialysis during pregnancy and the postpartum period. *J Am Soc Nephrol*. 2015;26:3085–3091.
35. Liu YM, Bao HD, Jiang ZZ, et al. Pregnancy-related acute kidney injury and a review of the literature in China. *Intern Med*. 2015;54:1695–1703.
36. Wiles KS, Banerjee A. Acute kidney injury in pregnancy and the use of non-steroidal anti-inflammatory drugs. *The Obstetrician & Gynaecologist*. 2016;18:127–135.
37. Fitzpatrick A, Mohammadi F, Jesudason S. Managing pregnancy in chronic kidney disease: improving outcomes for mother and baby. *Int J Womens Health*. 2016;8:273–285.
38. Afolabi BB. Plasma volume in normal and sickle cell pregnancy [thesis]. Nottingham, UK: University of Nottingham; 2011. Available at: <http://eprints.nottingham.ac.uk/12073/1/FINALTHESISUBMITTED060611.pdf>. Accessed February 14, 2018.
39. Akbari A, Lepage N, Keely E, et al. Cystatin-C and beta trace protein as markers of renal function in pregnancy. *BJOG*. 2005;112:575–578.
40. Al-Kuran O, Al-Mehaisen L, Beitawi S, et al. Validation of reportable indices of haematology, liver and renal function in pregnancy for the middle eastern population. *J Obstet Gynaecol*. 2012;32:639–642.
41. Babay Z, Al-Wakeel J, Addar M, et al. Serum cystatin C in pregnant women: reference values, reliable and superior

- diagnostic accuracy. *Clin Exp Obstet Gynecol.* 2005;32:175–179.
42. Babu R, Venugopal B, Sabitha K, et al. Comparative study of liver and kidney biochemical parameters in normal and pre-eclamptic gestation. *J Curr Trends Clin Med Lab.* 2013;1:26–30.
 43. Collins PA. Serum constituents in pregnancy including 4 cases with elevated alkaline phosphatase levels. *Clin Biochem.* 1981;14:98–101.
 44. Djordjevic A, Spasic S, Jovanovic-Galovic A, et al. Oxidative stress in diabetic pregnancy: SOD, CAT and GSH-Px activity and lipid peroxidation products. *J Matern Fetal Neonatal Med.* 2004;16:367–372.
 45. Duvekot JJ, Cheriex EC, Pieters FA, et al. Maternal volume homeostasis in early pregnancy in relation to fetal growth restriction. *Obstet Gynecol.* 1995;85:361–367.
 46. Fasshauer M, Seeger J, Waldeyer T, et al. Serum levels of the adipokine adipocyte fatty acid-binding protein are increased in preeclampsia. *Am J Hypertens.* 2008;21:582–586.
 47. Fasshauer M, Waldeyer T, Seeger J, et al. Serum levels of the adipokine visfatin are increased in pre-eclampsia. *Clin Endocrinol (Oxf).* 2008;69:69–73.
 48. de Flamingh JP, Van der Merwe JV. A serum biochemical profile of normal pregnancy. *S Afr Med J.* 1984;65:552–555.
 49. Guo HX, Wang CH, Li ZQ, et al. The application of serum cystatin C in estimating the renal function in women with preeclampsia. *Reprod Sci.* 2012;19:712–717.
 50. Hanna B. The role of calcium correction during normal pregnancy at third trimester in Mosul. *Oman Med J.* 2009;24:188–194.
 51. Heguilén RM, Liste AA, Bellusci AD, et al. Renal response to an acute protein challenge in pregnant women with borderline hypertension. *Nephrology.* 2007;12:254–260.
 52. Iqbal SA, Ansari AK, Akhtar MS. Assessment of renal function during various stages of pregnancy in women. *Proc Pak Acad Sci.* 2003;40:165–172.
 53. Järnfeldt-Samsioe A, Eriksson B, Waldenström J, et al. Some new aspects on emesis gravidarum. *Gynecol Obstet Inv.* 1985;19:174–186.
 54. Jiang H, McGiff JC, Fava C, et al. Maternal and fetal epoxyeicosatrienoic acids in normotensive and preeclamptic pregnancies. *Am J Hypertens.* 2013;26:271–278.
 55. Kametas N, McAuliffe F, Krampfl E, et al. Maternal electrolyte and liver function changes during pregnancy at high altitude. *Clin Chim Acta.* 2003;328:21–29.
 56. Klajnbard A, Szecsi PB, Colov NP, et al. Laboratory reference intervals during pregnancy, delivery and the early postpartum period. *Clin Chem Lab Med.* 2010;48:237–248.
 57. Knopp RH, Bergelin RO, Wahl PW, et al. Clinical chemistry alterations in pregnancy and oral contraceptive use. *Obstet Gynecol.* 1985;66:682–690.
 58. Kristensen K, Wide-Svensson D, Schmidt C, et al. Cystatin C, beta-2-microglobulin and beta-trace protein in pre-eclampsia. *Acta Obstet Gynecol Scand.* 2007b;86:921–926.
 59. Lain KY, Markovic N, Ness RB, et al. Effect of smoking on uric acid and other metabolic markers throughout normal pregnancy. *J Clin Endocrinol Metab.* 2005;90:5743–5746.
 60. Lohsiriwat S, Imrittha N. Effect of posture on creatinine clearance in late pregnancy and after pregnancy. *J Obstet Gynaecol Res.* 2008;34:337–342.
 61. Mahendru AA, Everett TR, Wilkinson IB, et al. A longitudinal study of maternal cardiovascular function from preconception to the postpartum period. *J Hypertens.* 2014;32:849–856.
 62. Majewska AK, Janus T, Ronin-Walknowska E, et al. 1-H magnetic resonance spectroscopy of urine for the assessment of renal dysfunction in healthy pregnant women. *Adv Clin Exp Med.* 2010;19:177–183.
 63. Makuyana D, Mahomed K, Shukusho FD, et al. Liver and kidney function tests in normal and pre-eclamptic gestation: a comparison with non-gestational reference values. *Cent Afr J Med.* 2002;48:55–59.
 64. Matteucci E, Giampietro O. Na(+)-H+ exchange activity throughout pregnancy: the proper experimental approach. *Ann Ist Super Sanita.* 1997;33:371–374.
 65. Milman N, Bergholt T, Byg KE, et al. Reference intervals for haematological variables during normal pregnancy and postpartum in 434 healthy Danish women. *Eur J Haematol.* 2007;79:39–46.
 66. Milne JEC, Lindheimer MD, Davison JM. Glomerular heteroporous membrane modeling in third trimester and postpartum before and during amino acid infusion. *Am J Physiol Renal Physiol.* 2002;282:F170–F175.
 67. Miri-Dashe T, Osawe S, Tokdung M, et al. Comprehensive reference ranges for hematology and clinical chemistry laboratory parameters derived from normal Nigerian adults. *PLoS One.* 2014;9:e93919.
 68. Ogueh O, Clough A, Hancock M, et al. A longitudinal study of the control of renal and uterine hemodynamic changes of pregnancy. *Hypertens Pregnancy.* 2011;30:243–259.
 69. Pahl MV, Culver BD, Strong PL, et al. The effect of pregnancy on renal clearance of boron in humans: a study based on normal dietary intake of boron. *Toxicol Sci.* 2001;60:252–256.
 70. Saxena AR, Ananth Karumanchi S, Fan SL, et al. Correlation of cystatin-C with glomerular filtration rate by inulin clearance in pregnancy. *Hypertens Pregnancy.* 2012;31:22–30.
 71. Schoenmakers I, Jarjou LM, Goldberg GR, et al. Acute response to oral calcium loading in pregnant and lactating women with a low calcium intake: a pilot study. *Osteoporos Int.* 2013;24:2301–2308.
 72. Siddiqui JA, Rana IA. Mineral and parathyroid hormone interrelationships in normal pregnancy and pregnancy-induced hypertension. *J Pak Med Assoc.* 1993;43:92–95.
 73. Strevens H, Wide-Svensson D, Torffvit O, et al. Serum cystatin C for assessment of glomerular filtration rate in pregnant and non-pregnant women: indications of altered filtration process in pregnancy. *Scand J Clin Lab Invest.* 2002;62:141–147.
 74. van Buul EJ, Steegers EA, Jongsma HW, et al. Haematological and biochemical profile of uncomplicated pregnancy in nulliparous women: a longitudinal study. *Neth J Med.* 1995;46:73–85.

75. Vural P, Akgül C, Canbaz M. Urinary PGE-2 and PGF-2alpha levels and renal functions in preeclampsia. *Gynecol Obstet Invest.* 1998;45:237–241.
76. de Weerd S, Steegers-Theunissen RP, de Boo TM, et al. Maternal periconceptual biochemical and hematological parameters, vitamin profiles and pregnancy outcome. *Eur J Clin Nutr.* 2003;57:1128–1134.
77. Weissberg N, Shemesh O, Schwartz G, et al. The rise of serum creatinine levels during labor. *Arch Gynecol Obstet.* 1991;249:33–37.