



The prognostic value of USP14 and PSMD14 expression in non-small cell lung cancer

Jian Lei^{1,2}, Xiaoliu Liu³, Wei Liu², Yun Zhang², Zhihong Liu²

¹Affiliated Cancer Hospital and Institute of Guangzhou Medical University, Guangzhou Municipal and Guangdong Provincial Key Laboratory of Protein Modification and Degradation, State Key Laboratory of Respiratory Disease, School of Basic Medical Sciences, Guangzhou Medical University, Guangzhou, China; ²Department of Pathology, Hunan Cancer Hospital and The Affiliated Cancer Hospital of Xiangya School of Medicine, Central South University, Changsha, China; ³Department of Hematology and Oncology, The Fourth Hospital of Changsha and The Affiliated Changsha hospital of Hunan Normal University, Changsha, China

Contributions: (I) Conception and design: J Lei, W Liu; (II) Administrative support: Z Liu; (III) Provision of study materials or patients: J Lei, Y Zhang; (IV) Collection and assembly of data: J Lei; (V) Data analysis and interpretation: J Lei, X Liu; (VI) Manuscript writing: All authors; (VII) Final approval of manuscript: All authors.

Correspondence to: Jian Lei. Affiliated Cancer Hospital and Institute of Guangzhou Medical University, Guangzhou Municipal and Guangdong Provincial Key Laboratory of Protein Modification and Degradation, State Key Laboratory of Respiratory Disease, School of Basic Medical Sciences, Guangzhou Medical University, Guangzhou 511436, China; Department of Pathology, Hunan Cancer Hospital and The Affiliated Cancer Hospital of Xiangya School of Medicine, Central South University, Changsha 410013, China. Email: lejian@hnca.org.cn.

Background: Ubiquitin specific peptidase 14 (USP14) and proteasome 26S subunit, non-ATPase 14 (PSMD14) are two deubiquitinases that are closely related to the human 19S proteasome. These are highly expressed in various types of cancers and are associated with prognosis. However, the expression, clinicopathological features, and prognostic relevance of these two deubiquitinases remain unclear in patients with non-small cell lung cancer (NSCLC). Moreover, the correlation between the expression of these two deubiquitinases in NSCLC has not been reported.

Methods: In this study, the expression of USP14 and PSMD14 in NSCLC tissues and adjacent non-tumor tissues were examined by immunohistochemical staining. The association of these two deubiquitinases with the clinicopathological features and overall survival (OS) of patients with NSCLC was evaluated meanwhile.

Results: The expression of USP14 and PSMD14 was upregulated in NSCLC tissues compared with adjacent non-tumor tissues. High expression of both these deubiquitinases was positively correlated with the TNM stage of NSCLC. In addition, PSMD14 was positively correlated with lymph node metastasis in NSCLC. The survival analysis showed that elevated levels of USP14 or PSMD14 were associated with poorer survival of NSCLC patients compared with low expression of USP14 or PSMD14. Cox regression analysis indicated that TNM stage, USP14, and PSMD14 were independent prognostic factors for OS in NSCLC.

Conclusions: This study demonstrated that USP14 and PSMD14 may play important roles in the progression of NSCLC, especially when they are expressed simultaneously at elevated levels. Thus, USP14 and PSMD14 may be potential novel biomarkers and therapeutic targets for the prognosis and treatment of patients with NSCLC.

Keywords: Non-small cell lung cancer (NSCLC); ubiquitin specific peptidase 14 (USP14); proteasome 26S subunit, non-ATPase 14 (PSMD14); deubiquitinase; combined expression

Submitted May 10, 2021. Accepted for publication Jun 16, 2021.

doi: 10.21037/atm-21-2748

View this article at: <https://dx.doi.org/10.21037/atm-21-2748>

Introduction

Lung cancer is the most common malignant tumor with the highest morbidity and mortality in China and world-wide (1,2). China has the largest number of newly diagnosed lung cancer cases and related deaths, accounting for one-third of the total global cases (3,4). Non-small cell lung cancer (NSCLC) is the main pathological type of lung cancer and can be classified into squamous cell carcinoma (SCC) and adenocarcinoma. The primary treatments for NSCLC are surgery, chemotherapy, and radiotherapy. In recent years, molecular targeted therapy and immunotherapy have shown increasing potential. Despite continuous improvements in traditional and emerging treatments, the 5-year overall survival (OS) rate of NSCLC patients is still relatively low, at about 16% (5-7). Therefore, the search for novel tumor markers and effective drug targets is of great significance for the early diagnosis, precise treatment, and prognosis of patients with NSCLC.

The ubiquitin-proteasome pathway (UPP) is the main pathway for protein degradation in eukaryotic organisms (8,9). Deubiquitinase can rescue the substrate protein from degradation by removing ubiquitin (10). Moreover, deubiquitinases may function as oncogenes or tumor suppressor genes to participate in the occurrence and development of tumors. They can also affect the development of tumors by regulating the activity of tumor-related proteins (11-13). Ubiquitin specific peptidase 14 (USP14; also known as ubp6) and proteasome 26S subunit, non-ATPase 14 (PSMD14; also known as POH1 or rpn11), are important deubiquitinases that are closely related to the human 19S proteasome. They are highly expressed in many tumors and are associated with cancer prognosis (14,15). However, to date, there has been a paucity of reports investigating USP14 and PSMD14 in lung cancer, including NSCLC. Moreover, there have been no reports about the expression of these two proteins in lung SCC, nor the clinicopathological significance and prognostic significance of the combined expression of these two proteins in NSCLC.

In this study, the protein expression of USP14 and PSMD14 was analyzed in 184 samples of NSCLC tissues (including lung SCC and adenocarcinoma). The correlation between the expression of USP14 and PSMD14 in NSCLC was examined. Subsequently, the association of USP14 and PSMD14 with the clinicopathological features and OS of NSCLC patients was evaluated. Our investigation suggested that USP14 and PSMD14 may serve as potential prognostic markers and therapeutic targets for the treatment of

patients with NSCLC.

We present the following article in accordance with the REMARK reporting checklist (available at <https://dx.doi.org/10.21037/atm-21-2748>).

Methods

Tissue specimens

A total of 184 NSCLC tissues and corresponding adjacent non-cancerous tissues were obtained from the Department of Pathology in the Hunan Cancer Hospital, China. All specimens were fixed with formaldehyde and embedded with paraffin. All procedures performed in this study involving human participants were in accordance with the Declaration of Helsinki (as revised in 2013). The study was approved by Medical ethics committee of Hunan Cancer Hospital (No. 29 of scientific research quick review in 2021), obtaining exemption of informed consent. Patients did not receive radiotherapy or chemotherapy prior to collection of samples.

Clinicopathological evaluation and follow-up

Tissues were classified into the histological subtypes according to the classification of lung cancer by the World Health Organization in 2015. Samples were also classified according to age, gender, history of tobacco smoking, degree of tumor differentiation, tumor size, lymph node station, and TNM stage. All patients were followed up from the day of surgery. The median follow-up time was 44 months. Smoking history was defined as smoking at least one cigarette per day for more than half a year. OS was calculated from the date of surgery to the date of death or the last follow-up date.

Immunohistochemical staining

Human NSCLC tissues and adjacent non-cancerous tissues were cut into 4 μ m slices. After baking at 70 °C for 30 minutes, the slices were dewaxed and hydrated using a xylene and alcohol series, respectively. Endogenous peroxidase activity was blocked by incubation with 3% hydrogen peroxide at room temperature for 10 minutes. Antigen recovery was performed by heating with a pressure cooker in citric acid antigen repair solution (pH 6.0). After blocking with 10% goat serum, the slices were incubated with rabbit anti-PSMD14 monoclonal antibody (ab109123)

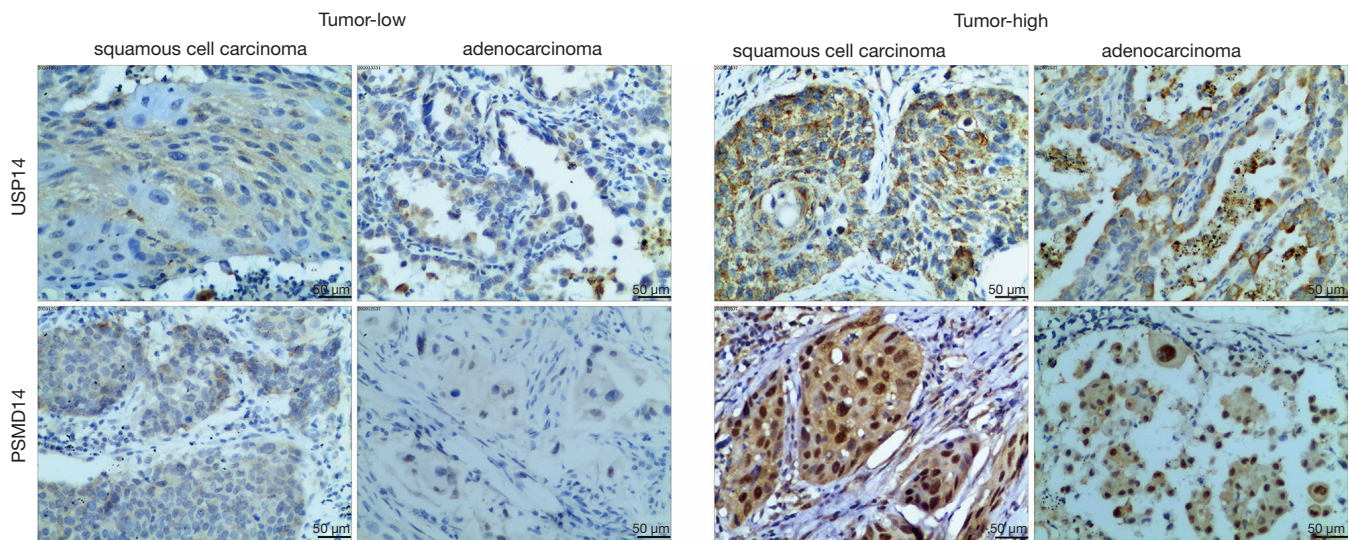


Figure 1 Immunostaining of USP14 and PSMD14 in NSCLC tissues. The scale bar represents 50 μm . USP14, ubiquitin specific peptidase 14; PSMD14, proteasome 26S subunit, non-ATPase 14; NSCLC, non-small cell lung cancer.

or USP14 polyclonal antibody (ab71165; Abcam, Cambridge, UK) at 4 °C overnight. The tissue sections were then washed in phosphate-buffered saline (PBS) and incubated with a horseradish peroxidase-conjugated secondary antibody (MaixinBiol, Fuzhou, China) for 1 hour at room temperature. Samples were stained with diaminobenzidine and counterstained with hematoxylin according to the MaxVision kit (MaixinBiol) instructions.

Assessing immunohistochemical staining

The immunohistochemical results were independently evaluated by two experienced pathologists and scored according to Friedrich's criteria. The staining intensity of tumor cells was evaluated with a score of 0 (negative), 1 (mild), 2 (moderate), or 3 (strong). The proportion of positive tumor cells was evaluated with a score of 0 (0–5%), 1 (6–20%), 2 (21–50%), or 3 (51–100%). The final score was obtained by multiplying the scores of the staining intensity and the proportion of positive cells. A score ≤ 1 was considered low expression, and a score >1 was considered high expression.

Statistical analysis

All statistical analyses were performed by SPSS version 20.0 (IBM, Chicago, IL, USA). The relationships between clinicopathological parameters and USP14 or PSMD14

expression were analyzed by the χ^2 or Fisher's exact test. The OS distribution was calculated by the Kaplan-Meier method and analyzed by the log-rank test. Univariate and multivariate analyses were based on the Cox proportional hazard regression model. P value <0.05 was considered statistically significant.

Results

The expression of USP14 and PSMD14 in human NSCLC tissues

To observe the expression of USP14 and PSMD14 in NSCLC tissues, immunohistochemical staining was performed on 184 NSCLC tissue samples and the corresponding adjacent non-cancerous tissues. USP14 immunostaining was located in the cytoplasm of tumor cells. In contrast, PSMD14 immunostaining was primarily detected in the cytoplasm of tumor cells and partially in the nuclei of tumor cells. USP14 and PSMD14 expression were both significantly upregulated in NSCLC tissues compared to the corresponding adjacent non-cancerous tissues (Figure 1 and Table 1).

Association of the expression of USP14 and PSMD14 with clinicopathological characteristics in NSCLC

USP14 expression was significantly associated with TNM stage ($P=0.020$, Table 2). In addition, PSMD14 was obviously

Table 1 The expression of USP14 and PSMD14 in NSCLC tissues

Classification	Cases	High	Low	χ^2	P value
USP14				$\chi^2=14.094$	0.000*
Tumor tissues	184	108	76		
Adjacent non-tumor tissues	184	72	112		
PSMD14				$\chi^2=12.783$	0.000*
Tumor tissues	184	121	63		
Adjacent non-tumor tissues	184	87	97		

*, P<0.05. USP14, ubiquitin specific peptidase 14; PSMD14, proteasome 26S subunit, non-ATPase 14; NSCLC, non-small cell lung cancer.

correlated with lymph node metastasis (P=0.027), as well as TNM stage (P=0.019) in NSCLC (Table 3). However, there was no association between PSMD14 expression and histological subtype, age, gender, tobacco smoking history, tumor size, nor degree of tumor differentiation. Similarly, there was no association between USP14 expression and the other clinicopathological characteristics. These results suggested that high expression of USP14 and PSMD14 were both associated with the severity and progression of NSCLC.

The association between clinicopathological characteristics and the combined expression of USP14 and PSMD14 in NSCLC was assessed (Table 4). There were 78 cases of high USP14 and high PSMD14 expression, 30 cases of high USP14 and low PSMD14 expression, 33 cases of low USP14 and low PSMD14 expression, and 43 cases of low USP14 and high PSMD14 expression. Samples with high USP14 and high PSMD14 expression profiles showed significant differences in histological subtype, age, lymph node metastasis, and TNM stage compared to samples in the other three expression profile subgroups. However, there were no significant differences in gender, tobacco smoking history, tumor size, degree of tumor differentiation, lymph node metastasis, and TNM stage among these latter expression profile subgroups. In addition, there was no obvious difference in any of the clinicopathological features between the high USP14 and low PSMD14 subgroup and the low USP14 and high PSMD14 subgroup. These results further suggested that USP14 and PSMD14 may play important roles in the progression of NSCLC, especially when they are concurrently expressed at high levels.

The association between OS and the expression of USP14 and PSMD14 in non-small cell lung carcinoma

The prognostic significance of USP14 and PSMD14

expression in NSCLC patients was assessed by the Kaplan-Meier survival analysis and log-rank test. The median survival time of patients with high USP14 expression was 39 months, and 58 months in patients with low USP14 expression. In addition, the median survival time of patients with high PSMD14 expression was 36 months, and 59 months in patients with low PSMD14 expression. The survival analysis showed that high expression of USP14 and high expression PSMD14 were both associated with poorer survival of NSCLC patients compared with low expression of USP14 and low expression of PSMD14, respectively (P=0.001; Figure 2A,B).

The combined expression of USP14 and PSMD14 was assessed in terms of the OS of patients with NSCLC. Compared with the subgroup expressing low USP14 and low PSMD14, the other three subgroups were all associated with shorter OS in NSCLC patients (P<0.001; Figure 2C). However, there was no noticeable difference in the OS among these latter three subgroups.

Univariate and multivariate Cox regression analyses of prognostic factors of survival in NSCLC

Univariate and multivariate Cox proportional hazard regression analyses were performed to investigate the influence of each clinicopathological feature on the OS in NSCLC patients. Univariate analyses demonstrated that age (P=0.023), lymph node metastasis (P<0.001), TNM stage (P<0.001), degree of differentiation (P<0.001), USP14 expression (P<0.001), and PSMD14 expression (P=0.001) were all correlated with shorter OS in NSCLC patients (Table 5). Multivariate analyses showed that TNM stage (P<0.001), USP14 expression (P=0.014), and PSMD14 expression (P=0.020) were independent prognostic factors for OS in NSCLC patients (Table 6).

Table 2 The expression of USP14 was correlated with clinicopathological features in NSCLC patients

Clinicopathological features	Cases	USP14 expression		χ^2	P value
		High	Low		
Histological subtype				2.089	0.148
SCC	90	48	42		
Adenocarcinoma	94	60	34		
Age				0.941	0.332
≤50	77	42	35		
>50	107	66	41		
Gender				1.038	0.310
Male	128	72	56		
Female	56	36	20		
Tobacco smoking history				0.256	0.614
No	52	29	23		
Yes	132	79	53		
Tumor size (cm)				1.206	0.272
≤4	105	58	47		
>4	79	50	29		
Lymph node metastasis				1.615	0.205
No	111	61	50		
Yes	73	47	26		
TNM stage				7.792	0.020*
I	65	31	34		
II	61	35	26		
III + IV	58	42	16		
Differentiation degree				0.901	0.637
Well	39	21	18		
Moderate	98	57	41		
Poor	47	30	17		

*, P<0.05. USP14, ubiquitin specific peptidase 14; NSCLC, non-small cell lung cancer; SCC, squamous cell carcinoma.

Discussion

Compared with small cell lung cancer, NSCLC is characterized by low malignancy, slow progression, and late metastasis. However, at diagnosis, about 50% of patients are in the middle and late stages of the disease, and at this stage, surgery is generally difficult and complete removal of the tumor is rare. Moreover, postoperative recurrence and metastasis can often occur (6,7). Therefore, accurate

methods for early diagnosis and effective treatment of lung cancer are urgently needed.

Ubiquitin specific proteases (USP) belong to the cysteine protease family, which contains more than 50 kinds of deubiquitin enzymes. The members of this family all contain a highly conserved USP domain. The coding gene of USP14 is located on human chromosome 18p11.32, which consists of 494 amino acids (16,17). The role of

Table 3 The expression of PSMD14 was correlated with clinicopathological features in NSCLC patients

Clinicopathological features	Cases	PSMD14 expression		χ^2	P value
		High	Low		
Histological subtype				2.597	0.107
SCC	90	54	36		
Adenocarcinoma	94	67	27		
Age				2.132	0.144
≤50	77	46	31		
>50	107	75	32		
Gender				1.142	0.285
Male	128	81	47		
Female	56	40	16		
Tobacco smoking history				1.209	0.271
No	52	31	21		
Yes	132	90	42		
Tumor size (cm)				0.000	0.988
≤4	105	58	47		
>4	79	50	29		
Lymph node metastasis				1.615	0.027*
No	111	66	45		
Yes	73	55	18		
TNM stage				7.928	0.019*
I	65	36	29		
II	61	39	22		
III + IV	58	46	12		
Differentiation degree				3.144	0.208
Well	39	21	18		
Moderate	98	68	30		
Poor	47	32	15		

*, P<0.05. PSMD14, proteasome 26S subunit, non-ATPase 14; NSCLC, non-small cell lung cancer; SCC, squamous cell carcinoma.

USP14 in various tumors has been widely studied (18). Shinji *et al.* (19) found that USP14 expression was not only increased in colorectal cancer cell lines, but also correlated with TNM stage, lymph node, and liver metastasis in colorectal cancer patients. Moreover, the OS of patients with high USP14 expression was poor in colorectal cancer patients. Wu and colleagues (20) reported elevated expression of USP14 in the tissues of lung adenocarcinoma compared with the corresponding adjacent non-cancerous

tissues. At the same time, follow-up studies showed that patients with high USP14 expression had shorter OS and poorer prognosis. USP14 has also been shown to be highly expressed in ovarian cancer, endometrial cancer, breast cancer, hepatocellular carcinoma, pancreatic ductal adenocarcinoma, oral cancer, esophageal cancer, gastric cancer, and other tumor tissues, with most patients showing poor prognosis (15,21-27).

JAMMs is a family of deubiquitinating enzymes with

Table 4 The combined expression of USP14 and PSMD14 was correlated with clinicopathological features in NSCLC patients

Characteristics	Combined expression of USP14 and PSMD14				P value					
	1	2	3	4	P ^a	P ^b	P ^c	P ^d	P ^e	P ^f
Histological subtype					0.000*	0.362	0.001*	0.013*	0.457	0.049*
SCC	26	22	14	28						
Adenocarcinoma	52	8	19	15						
Age					0.769	0.044*	0.598	0.058	0.876	0.026*
≤50	31	11	20	15						
>50	47	19	13	28						
Gender					0.172	0.315	0.194	0.720	0.826	0.868
Male	49	23	24	32						
Female	29	7	9	11						
Smoking history					0.346	0.330	0.669	1.000	0.622	0.612
No	19	10	11	12						
Yes	59	20	22	31						
Tumor size (cm)					0.632	0.407	0.570	0.275	0.375	0.778
≤4	43	15	21	26						
>4	35	15	12	17						
Lymph node metastasis					0.002*	0.118	0.034*	0.154	0.240	0.731
No	37	24	21	29						
Yes	41	6	12	14						
TNM stage					0.003*	0.013*	0.005*	0.157	0.822	0.276
I	19	12	17	17						
II	21	14	8	18						
III + IV	38	4	8	8						
Differentiation degree					0.214	0.248	0.164	0.319	0.694	0.082
Well	13	8	10	8						
Moderate	40	17	13	28						
Poor	25	5	10	7						

1, high USP14 + high PSMD14; 2, high USP14 + low PSMD14; 3, low USP14 + low PSMD14; 4, low USP14 + high PSMD14; P^a, 1 vs. 2; P^b, 1 vs. 3; P^c, 1 vs. 4; P^d, 2 vs. 3; P^e, 2 vs. 4; P^f, 3 vs. 4. *, P<0.05. USP14, ubiquitin specific peptidase 14; PSMD14, proteasome 26S subunit, non-ATPase 14; NSCLC, non-small cell lung cancer; SCC, squamous cell carcinoma.

metalloproteinase activity. One member of this family, namely, PSMD14, is a component of the 19S regulatory particle lid structure, which acts as a rate-limiting enzyme during the degradation of substrate proteins by the proteasome. The gene encoding PSMD14 is located on human chromosome 2q24.2, which consists of 310 amino acids (8,28,29). PSMD14 has been shown to play an

important role in tumorigenesis and development. Gene expression across normal and tumor tissues (GENT) confirmed that PSMD14 mRNA expression was increased in bladder cancer, breast cancer, cervical cancer, liver cancer, esophageal cancer, colon cancer, renal cancer, lung cancer, ovarian cancer, thyroid cancer, testicular cancer, prostate cancer, and other tumor tissues (30,31). Wang *et al.* reported

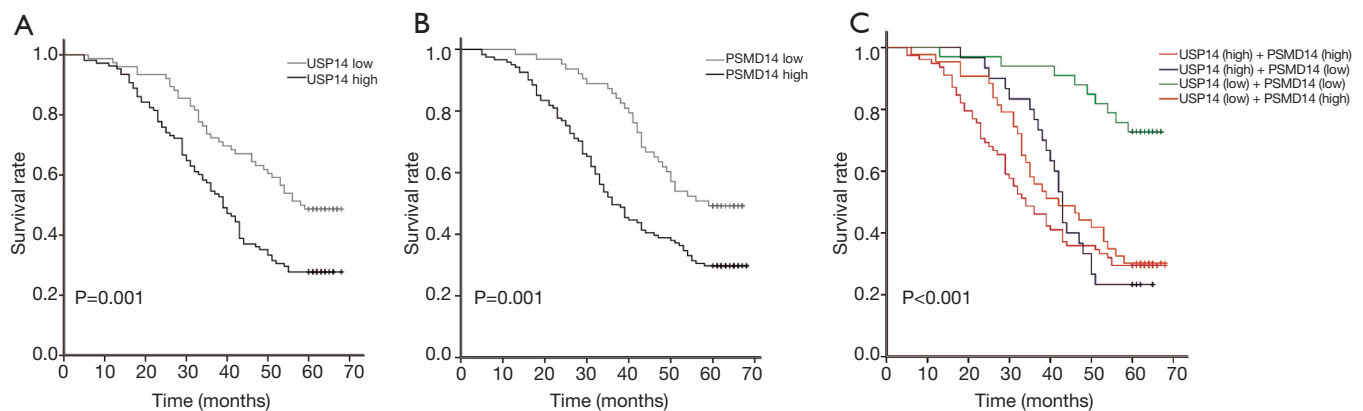


Figure 2 Kaplan-Meier survival curves of USP14 and PSMD14 expression for OS in patients with non-small cell lung carcinoma. (A) The prognostic value of low and high USP14 expression was measured by Kaplan-Meier survival curves. (B) The prognostic value of low and high PSMD14 expression was measured by Kaplan-Meier survival curves. (C) The prognostic value of combined expression of USP14 and PSMD14 was measured by Kaplan-Meier survival curves. USP14, ubiquitin specific peptidase 14; PSMD14, proteasome 26S subunit, non-ATPase 14; OS, overall survival.

Table 5 Univariate Cox regression analysis of prognostic factors of survival in NSCLC patients

Characteristics	Hazard ratio (95% CI)	P value
Histological subtype	0.908 (0.757–1.089)	0.300
Age	1.536 (1.060–2.226)	0.023*
Gender	1.064 (0.720–1.571)	0.756
Tobacco smoking history	1.157 (0.770–1.737)	0.482
Tumor size (cm)	1.252 (0.869–1.802)	0.227
Lymph node metastasis	3.522 (2.430–5.105)	<0.001*
TNM stage	2.470 (1.947–3.134)	<0.001*
Degree of differentiation	0.405 (0.239–0.688)	<0.001*
USP14 expression	1.914 (1.301–2.816)	<0.001*
PSMD14 expression	1.967 (1.308–2.957)	0.001*

*, $P < 0.05$. NSCLC, non-small cell lung cancer; CI, confidence interval; USP14, ubiquitin specific peptidase 14; PSMD14, proteasome 26S subunit, non-ATPase 14.

that high PSMD14 expression was related with poor prognosis of hepatocellular carcinoma, esophageal cancer, and colorectal cancer. Down regulation of PSMD14 protein expression by RNA interference inhibited the growth of these three tumor types and promoted the apoptosis of cancer cells (32). Other reports have also confirmed that elevated PSMD14 expression is not only related to poor prognosis of esophageal cancer patients, but is also related to the disease progression of multiple myeloma and enhanced invasion of breast cancer cells (33–35).

Although many studies have investigated the relationship between the expression of USP14 or PSMD14 and various tumor tissues, to our knowledge, there have been no reports examining the relationship between lung SCC and USP14 or PSMD14. Moreover, the clinicopathological significance of the combined expression of these two proteins in NSCLC has not been investigated. This current study examined tissues from 90 patients with SCC. Expression of USP14 and PSMD14 were both significantly upregulated in NSCLC tissues compared to the corresponding adjacent

Table 6 Multivariate Cox regression analysis of prognostic factors of survival in non-small cell lung carcinoma patients

Characteristics	Hazard ratio (95% CI)	P value
Age	0.772 (0.523–1.139)	0.193
Degree of differentiation	0.791 (0.441–1.419)	0.431
Lymph node metastasis	1.695 (0.916–3.137)	0.093
TNM stage	2.809 (1.702–4.635)	<0.001*
USP14 expression	1.747 (1.119–2.728)	0.014*
PSMD14 expression	1.679 (1.086–2.596)	0.020*

*, P<0.05. CI, confidence interval; USP14, ubiquitin specific peptidase 14; PSMD14, proteasome 26S subunit, non-ATPase 14.

non-cancerous tissues. High expression of USP14 was significantly associated with late TNM stage, while elevated PSMD14 expression was significantly correlated with lymph node metastasis as well as late TNM stage. These results are consistent with previous reports (20-25,34,35) showing that PSMD14 or USP14 are associated with clinicopathologic features in other tumors. Furthermore, there were significant differences in histological subtype, age, lymph node metastasis, and TNM stage between patients in the high USP14 and high PSMD14 expression subgroup compared to patients in the other expression profile subgroups. Compared with the single protein expression of USP14 or PSMD14, we divided the combined expression of USP14 and PSMD14 into four groups and obtained more meaningful indicators. For example, high USP14 and high PSMD14 expression were more common in people older than 50 years old, while low USP14 and low PSMD14 expression were more common in people younger than 50 years old. The survival analyses showed that high expression of USP14 or PSMD14 were both positively associated with shorter OS of NSCLC patients. NSCLC patients in the low PSMD14 and low USP14 expression subgroup had longer OS compared with to patients in the other expression profile subgroups. Cox proportional hazard model demonstrated that TNM stage, USP14, and PSMD14 were independent prognostic factors of shorter OS in NSCLC patients.

As this was a retrospective cohort study with a limited sample size, there were certain limitations to this investigation. Future studies should expand the sample size and collate other detailed clinicopathological information and follow-up data to further verify these conclusions.

Conclusions

This investigation demonstrated that expression of USP14

and PSMD14 were both significantly upregulated in NSCLC tissues. High expression of USP14 and PSMD14 were both associated with the severity and progression of NSCLC. USP14 and PSMD14 may play important roles in the progression of NSCLC, especially when both are concurrently expressed at elevated levels. USP14 and PSMD14 may be potential novel biomarkers and therapeutic targets for evaluating prognosis and clinical treatment of patients with NSCLC.

Acknowledgments

Funding: None.

Footnote

Reporting Checklist: The authors have completed the REMARK reporting checklist. Available at <https://dx.doi.org/10.21037/atm-21-2748>

Data Sharing Statement: Available at <https://dx.doi.org/10.21037/atm-21-2748>

Conflicts of Interest: All authors have completed the ICMJE uniform disclosure form (available at <https://dx.doi.org/10.21037/atm-21-2748>). The authors have no conflicts of interest to declare.

Ethical Statement: The authors are accountable for all aspects of the work in ensuring that questions related to the accuracy or integrity of any part of the work are appropriately investigated and resolved. All procedures performed in this study involving human participants were in accordance with the Declaration of Helsinki (as revised in 2013). The study was approved by Medical ethics committee of Hunan Cancer Hospital (No. 29 of scientific

research quick review in 2021), obtaining exemption of informed consent.

Open Access Statement: This is an Open Access article distributed in accordance with the Creative Commons Attribution-NonCommercial-NoDerivs 4.0 International License (CC BY-NC-ND 4.0), which permits the non-commercial replication and distribution of the article with the strict proviso that no changes or edits are made and the original work is properly cited (including links to both the formal publication through the relevant DOI and the license). See: <https://creativecommons.org/licenses/by-nc-nd/4.0/>.

References

1. Ettinger DS. Ten years of progress in non-small cell lung cancer. *J Natl Compr Canc Netw* 2012;10:292-5.
2. Alexander M, Kim SY, Cheng H. Update 2020: management of non-small cell lung cancer. *Lung* 2020;198:897-907.
3. Chen W, Zheng R, Baade PD, et al. Cancer statistics in China, 2015. *CA Cancer J Clin* 2016;66:115-32.
4. Chen WQ, Li H, Sun KX, et al. Report of cancer incidence and mortality in China, 2014. *Zhonghua Zhong Liu Za Zhi* 2018;40:5-13.
5. Reck M, Rabe KF. Precision diagnosis and treatment for advanced non-small-cell lung cancer. *N Engl J Med* 2017;377:849-61.
6. Schiller JH. A new standard of care for advanced lung cancer. *N Engl J Med* 2018;378:2135-7.
7. Kowalczyk A, Jassem J. Multidisciplinary team care in advanced lung cancer. *Transl Lung Cancer Res* 2020;9:1690-8.
8. Bard JAM, Goodall EA, Greene ER, et al. Structure and function of the 26S proteasome. *Annu Rev Biochem* 2018;87:697-724.
9. Livneh I, Cohen-Kaplan V, Cohen-Rosenzweig C, et al. The life cycle of the 26S proteasome: from birth, through regulation and function, and onto its death. *Cell Res* 2016;26:869-85.
10. Lee MJ, Lee BH, Hanna J, et al. Trimming of ubiquitin chains by proteasome-associated deubiquitinating enzymes. *Mol Cell Proteomics* 2011;10:R110.003871.
11. Huang X, Zhang X, Xu J, et al. Deubiquitinating enzyme: a potential secondary checkpoint of cancer immunity. *Front Oncol* 2020;10:1289.
12. D'Arcy P, Brnjic S, Olofsson MH, et al. Inhibition of proteasome deubiquitinating activity as a new cancer therapy. *Nat Med* 2011;17:1636-40.
13. Hussain S, Zhang Y, Galardy PJ. DUBs and cancer: the role of deubiquitinating enzymes as oncogenes, non-oncogenes and tumor suppressors. *Cell Cycle* 2009;8:1688-97.
14. Tian Z, D'Arcy P, Wang X, et al. A novel small molecule inhibitor of deubiquitylating enzyme USP14 and UCHL5 induces apoptosis in multiple myeloma and overcomes bortezomib resistance. *Blood* 2014;123:706-16.
15. Zhu Y, Zhang Y, Sui Z, et al. USP14 de-ubiquitinates vimentin and miR-320a modulates USP14 and vimentin to contribute to malignancy in gastric cancer cells. *Oncotarget* 2017;8:48725-36.
16. Hu M, Li P, Song L, et al. Structure and mechanisms of the proteasome-associated deubiquitinating enzyme USP14. *EMBO J* 2005;24:3747-56.
17. Lee BH, Lee MJ, Park S, et al. Enhancement of proteasome activity by a small-molecule inhibitor of USP14. *Nature* 2010;467:179-84.
18. Lundgren S, Odrzywol E. USP14 inhibitors as potential anticancer agents. *Future Med Chem* 2018;10:1741-3.
19. Shinji S, Naito Z, Ishiwata S, et al. Ubiquitin-specific protease 14 expression in colorectal cancer is associated with liver and lymph node metastases. *Oncol Rep* 2006;15:539-43.
20. Wu N, Liu C, Bai C, et al. Over-expression of deubiquitinating enzyme USP14 in lung adenocarcinoma promotes proliferation through the accumulation of -catenin. *Int J Mol Sci* 2013;14:10749-60.
21. Wang Y, Wang J, Zhong J, et al. Ubiquitin-specific protease 14 (USP14) regulates cellular proliferation and apoptosis in epithelial ovarian cancer. *Med Oncol* 2015;32:379.
22. Huang G, Li L, Zhou W. USP14 activation promotes tumor progression in hepatocellular carcinoma. *Oncol Rep* 2015;34:2917-24.
23. Vogel RI, Pulver T, Heilmann W, et al. USP14 is a predictor of recurrence in endometrial cancer and a molecular target for endometrial cancer treatment. *Oncotarget* 2016;7:30962-76.
24. Zhang J, Zhang D, Sun L. Knockdown of ubiquitin-specific protease 14 (USP14) inhibits the proliferation and tumorigenesis in esophageal squamous cell carcinoma cells. *Oncol Res* 2017;25:249-57.
25. Chen X, Wu J, Chen Y, et al. Ubiquitin-specific protease 14 regulates cell proliferation and apoptosis in oral squamous cell carcinoma. *Int J Biochem Cell Biol* 2016;79:350-9.

26. Hang C, Gong C, Fang Y, et al. Ubiquitin-specific protease 14 (USP14) promotes proliferation and metastasis in pancreatic ductal adenocarcinoma. *J Mol Histol* 2021;52:187-96.
27. Zhu L, Yang S, He S, et al. Downregulation of ubiquitin-specific protease 14 (USP14) inhibits breast cancer cell proliferation and metastasis, but promotes apoptosis. *J Mol Histol* 2016;47:69-80.
28. Rosenzweig R, Osmulski PA, Gaczynska M, et al. The central unit within the 19S regulatory particle of the proteasome. *Nat Struct Mol Biol* 2008;15:573-80.
29. Verma R, Aravind L, Oania R, et al. Role of Rpn11 metalloprotease in deubiquitination and degradation by the 26S proteasome. *Science* 2002;298:611-5.
30. Perez C, Li J, Parlati F, et al. Discovery of an inhibitor of the proteasome subunit Rpn11. *J Med Chem* 2017;60:1343-61. Erratum in: *J Med Chem* 2017;60:3217.
31. Shin G, Kang TW, Yang S, et al. GENT: gene expression database of normal and tumor tissues. *Cancer Inform* 2011;10:149-57.
32. Wang CH, Lu SX, Liu LL, et al. POH1 Knockdown Induces Cancer Cell Apoptosis via p53 and Bim. *Neoplasia* 2018;20:411-24.
33. Song Y, Li S, Ray A, et al. Blockade of deubiquitylating enzyme Rpn11 triggers apoptosis in multiple myeloma cells and overcomes bortezomib resistance. *Oncogene* 2017;36:5631-8.
34. Zhu R, Liu Y, Zhou H, et al. Deubiquitinating enzyme PSMD14 promotes tumor metastasis through stabilizing SNAIL in human esophageal squamous cell carcinoma. *Cancer Lett* 2018;418:125-34.
35. Luo G, Hu N, Xia X, et al. RPN11 deubiquitinase promotes proliferation and migration of breast cancer cells. *Mol Med Rep* 2017;16:331-8.

(English Language Editor: J. Teoh)

Cite this article as: Lei J, Liu X, Liu W, Zhang Y, Liu Z. The prognostic value of USP14 and PSMD14 expression in non-small cell lung cancer. *Ann Transl Med* 2021;9(12):1019. doi: 10.21037/atm-21-2748