


ORIGINAL RESEARCH ARTICLE

Open Access



# Effect of low salicylate diet on clinical and inflammatory markers in patients with aspirin exacerbated respiratory disease – a randomized crossover trial

Leigh J. Sowerby<sup>1\*</sup> , Krupal B. Patel<sup>1</sup>, Crystal Schmerk<sup>2</sup>, Brian W. Rotenberg<sup>1</sup>, Taciano Rocha<sup>1</sup> and Doron D. Sommer<sup>3</sup>

## Abstract

**Background:** Aspirin-exacerbated respiratory disease (AERD) is characterized by eosinophilic rhinosinusitis, nasal polyposis, and bronchial asthma, along with the onset of respiratory reactions after the ingestion of nonsteroidal anti-inflammatory drugs (NSAIDs) or acetylsalicylic acid (ASA). In addition to the therapeutic routines and surgical options available, a low dietary intake of food salicylate has been suggested as adjunctive therapy for this condition.

This study aimed to assess the influence of a short-term low salicylate diet on inflammatory markers in patients with AERD and whether that would result in symptomatic improvement.

**Methods:** Prospective study with randomization to either a high or low salicylate diet for 1 week, followed by cross-over to the other study arm. Participants were asked to record their dietary salicylate for each week of the study. Urinary creatinine, salicylate and leukotriene levels were measured at the time of recruitment, end of week one and end of week two and the SNOT-22 questionnaire was filled out at the same time points.

**Results:** A total of seven participants completed the study. There was no statistical difference in the urinary salicylate and leukotriene levels between the two diets; nevertheless, participants on low salicylate diet reported improved SNOT-22 symptoms scores ( $p = 0.04$ ), mainly in the rhinologic, ear/facial, and sleep dysfunction symptom domains. In addition, these last two domains outcomes were more significant than the minimal clinically important difference.

**Conclusions:** A short-term low salicylate diet may not result in biochemical outcomes changes but seems to provide significant symptomatic relief for patients with AERD.

**Trial registration:** NCT01778465 ([www.clinicaltrials.gov](http://www.clinicaltrials.gov))

**Keywords:** Chronic rhinosinusitis, Asthma, Aspirin sensitivity, Immune system diseases, Nasal polyps

\* Correspondence: [leigh.sowerby@sjhc.london.on.ca](mailto:leigh.sowerby@sjhc.london.on.ca)

<sup>1</sup>Department of Otolaryngology – Head & Neck Surgery, Schulich Medicine & Dentistry, Western University, London Health Sciences Centre, St. Joseph's Hospital, London, Ontario, Canada

Full list of author information is available at the end of the article



© The Author(s). 2021 **Open Access** This article is licensed under a Creative Commons Attribution 4.0 International License, which permits use, sharing, adaptation, distribution and reproduction in any medium or format, as long as you give appropriate credit to the original author(s) and the source, provide a link to the Creative Commons licence, and indicate if changes were made. The images or other third party material in this article are included in the article's Creative Commons licence, unless indicated otherwise in a credit line to the material. If material is not included in the article's Creative Commons licence and your intended use is not permitted by statutory regulation or exceeds the permitted use, you will need to obtain permission directly from the copyright holder. To view a copy of this licence, visit <http://creativecommons.org/licenses/by/4.0/>. The Creative Commons Public Domain Dedication waiver (<http://creativecommons.org/publicdomain/zero/1.0/>) applies to the data made available in this article, unless otherwise stated in a credit line to the data.

## Background

Aspirin exacerbated respiratory disease (AERD) is an acquired condition with a median age of onset around 30 years, that consists of bronchial asthma, chronic rhinosinusitis with nasal polyposis and hypersensitivity to acetylsalicylic acid (ASA) [1, 2]. In AERD patients, acetylsalicylic acid (ASA) intolerance is a non-allergic hypersensitivity reaction without immunoglobulin E (IgE) involvement. These patients have recalcitrant chronic rhinosinusitis with nasal polyposis (CRSwNP), often requiring frequent surgical intervention, systemic corticosteroid therapy and aspirin desensitization [2, 3].

The pathophysiology of AERD has not been entirely elucidated; however, it is thought that increased expression of 5-lipoxygenase and leukotriene C4 synthase genes which results in downstream inflammatory activation, including mast cells and eosinophils. Altered metabolism of arachidonic acid results in an imbalance of prostaglandins (PG) and leukotrienes (LT), eliciting increased levels of cysteinyl leukotrienes (CysLT) and decreased levels of prostaglandin E2 (PGE2) [4].

Patient avoidance of non-selective COX inhibitors, medical and surgical procedures to address the underlying bronchial asthma and CRSwNP and ASA desensitization therapy, are standard for AERD management [5].

Dietary modifications have been used as an alternative to modulating the inflammatory status in patients with chronic diseases, such as CRS [6, 7]. It is estimated that daily intake of dietary salicylate can, occasionally, exceed the equivalent blood salicylate level of patients who take low-dose aspirin (i.e. 81 mg/day); however, salicylate bioavailability in food still warrants further investigation [8, 9]. Nonetheless, the potential influence of dietary components for AERD patients should not be underestimated. Many of these patients are prone to present upper and lower-airway hypersensitivity reactions to alcoholic beverages, in particular beer and red wine [2]. Also, extracts of plants such as poplar, myrtle, willow and meadowsweet, which are rich in salicylates, have been used for millennia due to analgesic and antipyretic effects. Willow and meadowsweet were the first sources of isolated salicylic acid, early in the nineteenth century [10].

Our group has previously demonstrated that adopting a low-salicylate diet can provide a significant reduction in sinonasal symptoms, along with improved nasal endoscopy scores, in comparison to regular dietary intake [11, 12]. Despite the encouraging results of modifying dietary salicylate intake, the biochemical effect of this intervention has not yet been evaluated with subjective sinonasal symptom correlation.

Therefore, the objective of this study was to evaluate the inflammatory status of AERD patients under both

low and high salicylate diets, testing the hypothesis that a low salicylate diet would decrease urinary salicylate levels and inflammatory markers, as well as improve the participants' subjective sinonasal symptoms.

## Materials and methods

This study was a prospective randomized, cross-over study assessing biochemical changes in the levels of urinary salicylates and urinary cysteinyl leukotrienes (CysLT), in relation to dietary salicylate intake in subjects with AERD. This was approved and reviewed by the research ethics board at Western University (London, ON, Canada – REB #103330) and was registered with clinicaltrials.gov (registration #01778465). The Sino-nasal Outcome Test (SNOT-22), categorized into five symptom domains, was used to assess, as a secondary outcome, the participants' symptoms [13].

Adults, 18 years and older, were assessed in the Department of Otolaryngology -Head and Neck Surgery at Western University. Patients with a history of surgery for chronic rhinosinusitis with nasal polyposis, confirmed asthma, and a documented history of a significant respiratory sensitivity reaction to ASA or ibuprofen were invited to participate in the study. Informed consent was obtained from all individual participants before inclusion. Exclusion criteria included a history of cystic fibrosis, immunodeficiency, recent endoscopic sinus surgery (within the past 6 months), and treatment with a course of oral corticosteroids within 3 months previous to enrollment. None of the enrolled patients were taking leukotriene receptor antagonists.

On the first clinic visit, participants were randomized to high (HS) or low (LS) salicylate diets, using an online randomization tool. They were briefed on a salicylate diet regarding the salicylate contents of foods, and a handbook was given to them comprising a detailed list of the salicylate contents of different foods (Supplement 1). The low-salicylate diet consisted of avoiding foods with high (>0.5 mg/portion) salicylate content and trying to consume foods with low (0.01 to 0.09 mg/portion) salicylate content for 1 week. Conversely, the high salicylate diet consisted of consuming mainly foods from the high salicylate group during the high salicylate diet week [9, 14]. After 1 week of diet (1st assigned one), patients crossed over to the opposite diet for the following week.

Outcome variables were assessed at the enrollment visit, 1 day after the completion of the first week (1st diet), and 1 day after the second week (2nd diet). At each of these time points, participants filled out the SNOT-22 questionnaire and had urinary samples collected. Additionally, participants kept a diet diary, in which they included a record of their everyday salicylate

dietary component intake to help them keep track of their salicylate diet intake and comply with their assigned diets.

## Outcomes

### Urinary biomarkers

The urine samples were aliquoted into five different 1 ml aliquots and stored at  $-80^{\circ}\text{C}$  until processed. Urinary creatinine (Cr) was determined using the standard core laboratory protocol (enzymatic method). After thawing, samples were centrifuged at 3000 rpm for 10 min at  $4^{\circ}\text{C}$ . Cysteinyl leukotrienes were measured in the supernatant of each sample using an ELISA kit (Cayman Chemical Co., Ann Arbor, MI) per manufacturer's protocol. Briefly, 50  $\mu\text{L}$  of supernatant, CysLT acetylcholinesterase conjugated tracer, and CysLT monoclonal antibody were added to each well of a 96-well plate. Following overnight incubation at  $4^{\circ}\text{C}$ , the wells were emptied and washed five times with wash buffer. To develop the assay, 200  $\mu\text{L}$  of Ellman's Reagent was added to each well, and the plate was placed on an orbital shaker in the dark for 90 min. The absorbance was measured at a wavelength of 412 nm. Sample concentrations were calculated according to the manufacturer guidelines.

Urinary Salicylic and Salicyluric acids were measured based on the methods of Baxter et al. [15].

### Sino-nasal outcome test (SNOT-22)

Study participants responded to a subjective symptom outcome test (sino-nasal outcome test; SNOT 22), a 22-item validated questionnaire that quantifies the severity of sinonasal symptoms (Washington University, St. Louis, MO). Each one of the 22 items in the test are graded from zero to five; the higher the score, the more severe the disease; additionally, it is subdivided into five distinct symptom domain scores: the rhinologic symptoms domain (range: 0–30), extra-nasal rhinologic symptoms domain (range: 0–15), ear/facial symptoms domain (range: 0–25), psychological dysfunction domain (range: 0–35), and the sleep dysfunction domain (range: 0–25) [13].

### Data analysis

The analysis was conducted using SPSS for Windows (version 20.0, Chicago, IL). In this study, the variables are presented as median and interquartile ranges, and those values were used for the hypothesis analysis. Three time points were predetermined for outcomes analysis (e.g. baseline measurements, post HS, and post LS). Furthermore, the effect of the interventions on each variable ( $\Delta$ ) was calculated by subtracting the individual baseline values of each participant from their Post value (i.e. post - baseline). Individual results were then compiled, and a group median was created.

Post diet outcome variables values were compared to their baseline values using the Wilcoxon signed-rank test in order to mimic the comparison between the group intervention to a regular diet. Moreover, the comparisons between the effect of each intervention were made by using the Mann-Whitney test. Both test results are expressed in terms of significance (2-tailed null hypothesis and significance levels  $p < 0.05$ ) and effect size  $r$ , utilizing the equation " $r = Z / \sqrt{N}$ " [16].

## Results

A total of ten potential participants were screened for this study. After consideration, three of them declined participation before the first week of diet; therefore, seven participants completed this study (5 men and 2 women), average age 55 (SD13.1). The study flow chart details the sequence of the interventions and evaluations throughout the study (Fig. 1).

### Urinary biomarkers

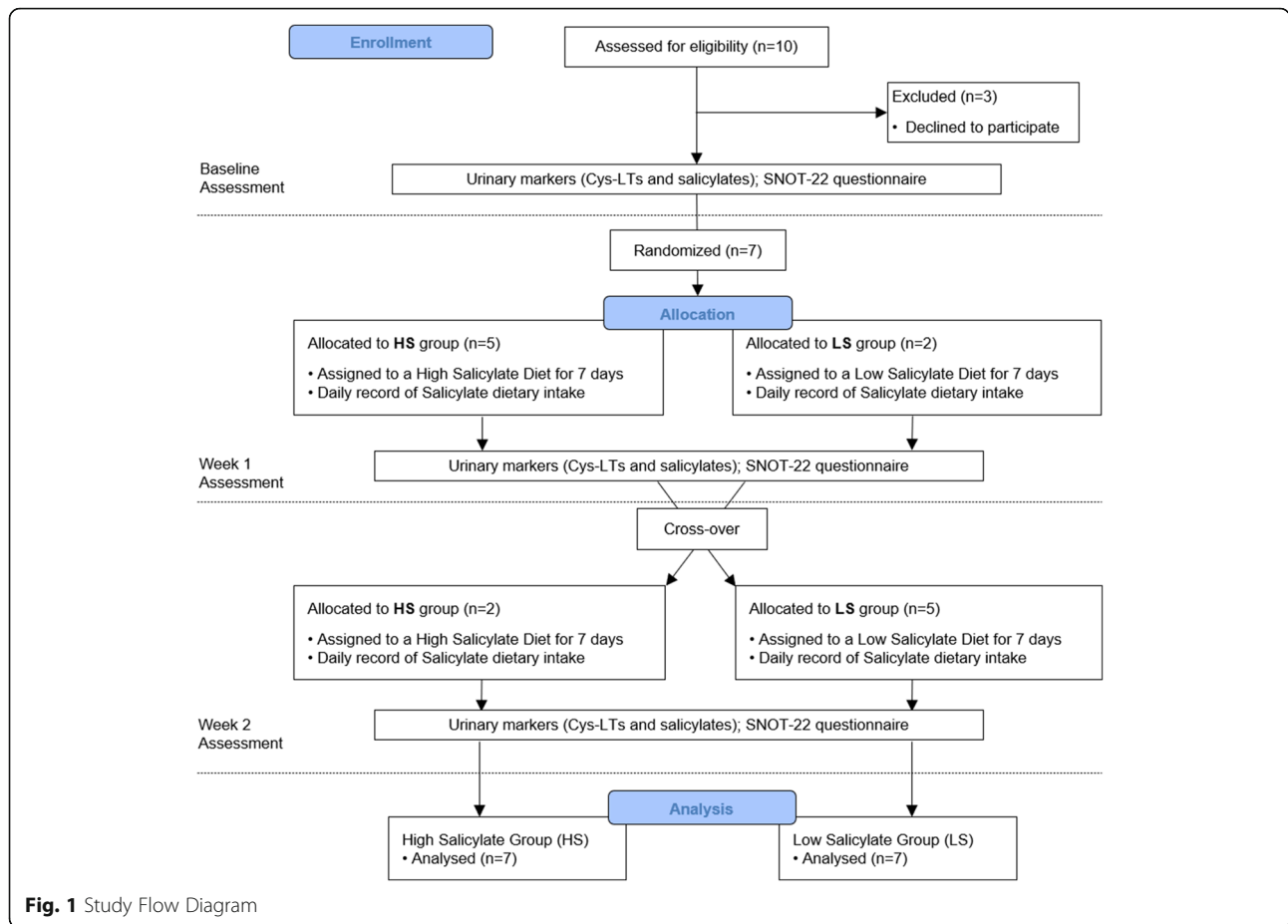
Except for creatinine levels, urinary biomarkers of both groups, did not yield statistically significant differences over the study (Table 1). In the intragroup analysis (i.e. post x baseline), HS presented a significant increase in the urinary creatinine, whereas the LS remained unchanged.

The data variance within group participants was considerably high on both groups, especially on the CysLT deltas. The expression of that outcome, case by case, shows that most of participants (5/7) presented a reduction in the CysLT concentration, regardless of their dietary intake (Fig. 2). Despite the absence of statistical significance, the overall CysLT reduction was higher in the LS participants, compared to the HS.

### Sino-nasal outcome test (SNOT-22)

The participants' nasal symptoms after 1 week on LS demonstrated a statistically significant reduction of 22 points ( $p = 0.043$ ; effect size  $r = -0.53$ ), compared to the baseline, while the group HS did not present significant improvement, on the intragroup analysis (Table 1). Furthermore, an intergroup analysis of both groups' deltas (e.g. post - baseline) medians values showed that LS reduced significantly 10 points on the nasal symptoms test, whereas HS presented an increase in this variable ( $p = 0.013$ ; effect size  $r = -0.66$ ). Expressed case by case, the difference between interventions on the SNOT 22 outcome is clearly identified where the LS was more effective on reducing the severity of the sinonasal symptoms, except for one participant, in comparison to the HS (Fig. 3).

A segmented analysis of the nasal symptoms outcome into domains is presented in Fig. 4. All five domains contributed to the overall result reported on the



paragraph above; however, only the Rhinologic (HS, median 2, IQR 7; LS, median - 2, IQR 16;  $p = 0.017$ , effect size  $r = -0.63$ ) and the ear/facial (HS, median 4, IQR 6; LS, median - 3, IQR 15;  $p = 0.02$ , effect size  $r = -0.62$ ) symptoms domains were statistically different between both groups.

The analysis of each domains' results regarding the minimal clinically important difference (MCID), according to the literature [13], showed that on top of the effect presented by the LS group, two domains overcame

their respective MCID (Fig. 4). The LS group median on the ear/face symptoms domain was - 3 (IQR 15), whereas the MCID for this domain is 1.6, and the sleep dysfunction was - 2 (IQR 12), while its MCID is 1.5.

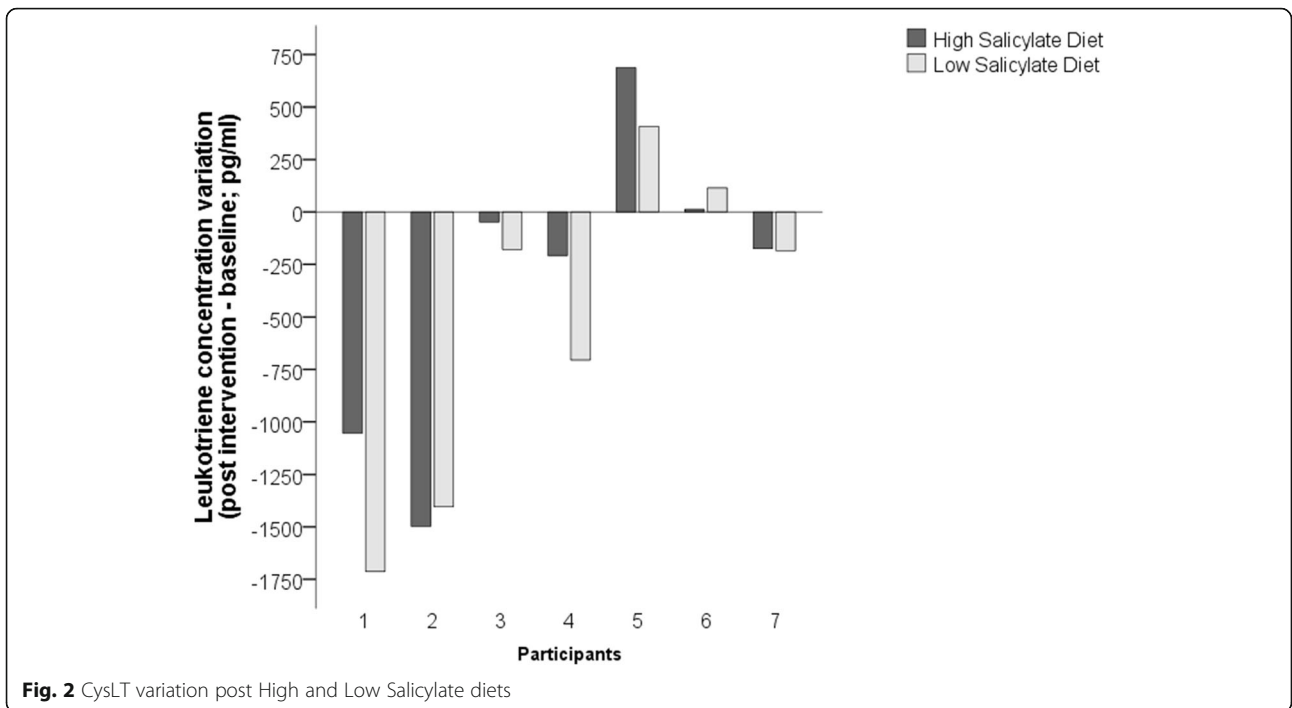
### Discussion

Our results showed that consuming a low salicylate diet for at least 1week resulted in a symptomatic improvement of subjective sinonasal symptoms in patients with AERD. However, the urinary leukotrienes did not

**Table 1** Participants biomarkers and symptom levels on both diets, high salicylate and low salicylate

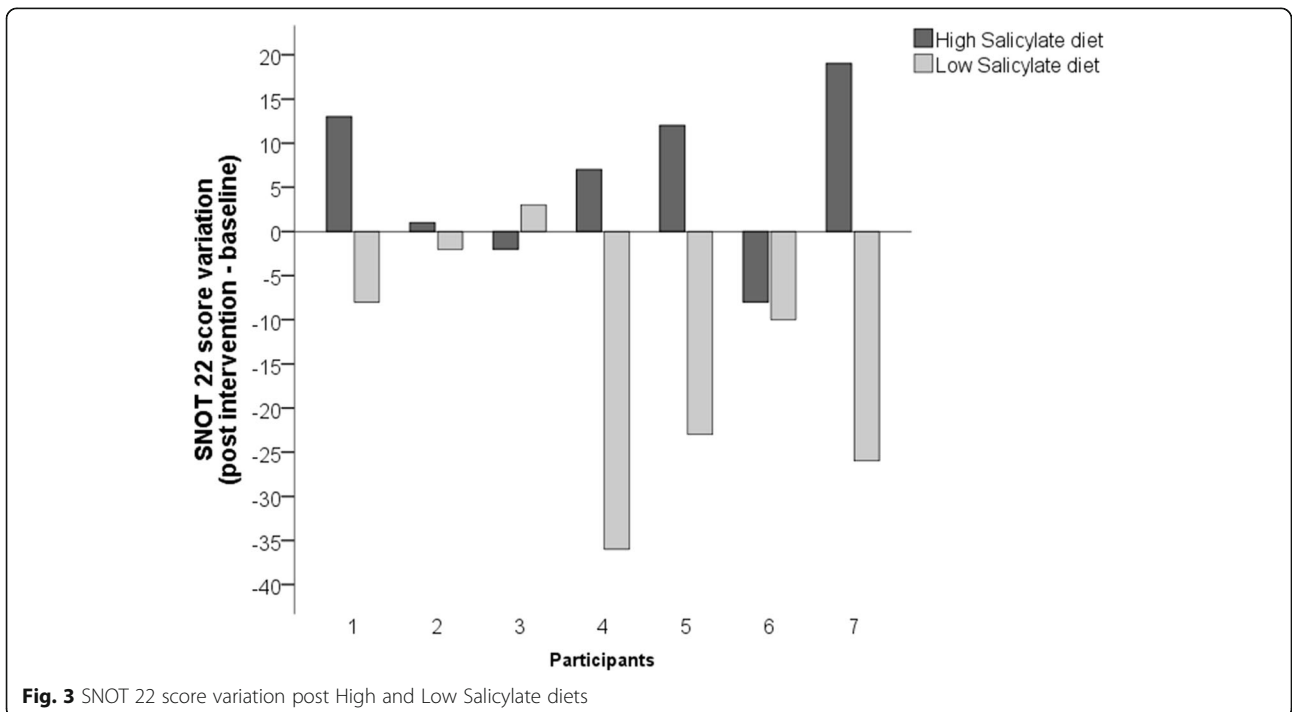
	Baseline		HS		Δ High		LS		Δ Low		Δ High x Δ Low <i>p</i>
	Median	IQR	Median	IQR	Median	IQR	Median	IQR	Median	IQR	
Urinary SA	2.62	4.5	0.92	0.8	-1.7	3.0	0.6	3.4	-1.13	2.1	0.338
Urinary SU	37.9	45.6	23.82	54.3	-16.76	31.6	44.21	34.6	-7.35	19.3	0.482
Urinary CysLT	819.88	2649.6	771.99	1327.9	-173.17	1065.2	874.05	1221.4	-184.58	1518.9	0.949
Urinary Cr	10.3	11.3	*15.3	12.6	2.6	8.4	9.9	11.3	-0.3	11.1	0.655
SNOT - 22	66	40	64	40	7	15	*44	31	-10	24	<b>0.013</b>

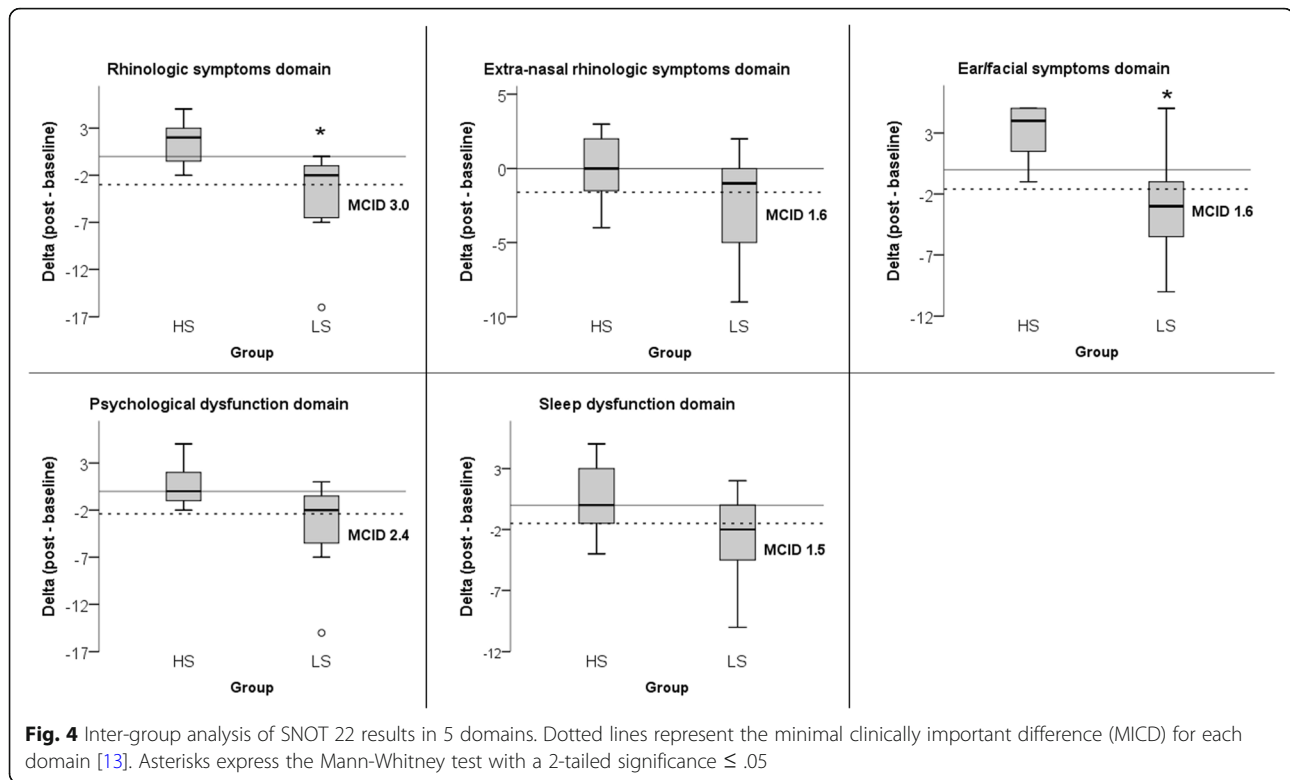
HS High-Salicylate Diet, LS Low-Salicylate Diet, SA Salicylic Acid (ng/ml), SU Salicyluric Acid (ng/ml), CysLT Cysteinyll leukotrienes (pg/ml), Cr Creatine (mmol/L), SNOT - 22 Sino-nasal outcome test, Δ High Post - Baseline of High-Salicylate diet group, Δ Low Post - Baseline of Low-salicylate diet group. \* significance  $p \leq 0.05$  (Wilcoxon Test; baseline x post); Δ High x Δ Low = intergroup dietary effect comparison (Mann Whitney U test)



correlate with these findings. Salicylates are ubiquitously present in modern diet and strict adherence to diet long-term may be challenging and pose difficulties in achieving a balanced diet. Some patients have commented that they find a less stringent version of the diet more achievable e.g. avoiding foods with high/very high

salicylate content. Another successful strategy has been to follow the strict diet as an elimination diet, and add in desired foods after a month to evaluate impact on symptoms. Despite these limitations, a low-salicylate diet could be an adjunctive treatment for patients who have increased frequency and intensity of symptoms and are





highly motivated to pursue alternative non-pharmacologic therapy.

AERD is among the more challenging presentations of CRSwNP to treat. Most patients require multiple surgeries and multifaceted medical management including topical saline irrigations, topical and systemic corticosteroids and aspirin desensitization [17, 18]. However, apart from requiring expertise in initiating the protocol, up to 30% of the patients on aspirin desensitization protocols report gastrointestinal side effects and discontinue therapy [19]. AERD patients often require multiple revision surgeries with some patients undergoing ten times as many surgeries as non-AERD patients with CRS [20, 21]. Additionally, the interval between surgeries is also decreased for AERD patients compared to non-AERD CRS patients. Monoclonal antibody therapy targeting type II inflammation is a promising development for use in CRSwNP and will change our treatment paradigm. These medications are, however, quite expensive and may not be an option for all patients.

Wood et al. [8] published a systematic review, which showed the average daily dietary salicylate intake for men is 4.42 mg/day and for women is 3.16 mg/day, [9] with even higher values in vegetarians. Interestingly, in the current study, urinary cys-LTs levels in both low-salicylate and high salicylate diet groups were reduced compared to baseline. Thus, it

is possible that the participants already had a significantly high baseline salicylate intake; therefore, the effort to create an enhanced salicylate intake (i.e. high salicylate group), might have been compromised by participants' pre-diet salicylate consumption levels. Additionally, participants might have been unable to alter their diet effectively, despite being advised to increase their dietary salicylate content when on high salicylate diet. Notably, six of the 7 patients continued on a modified low-salicylate diet after the study, as they found significant benefit from it, and were still continuing to follow the diet to some degree 6 months after participation in the research study.

Previous studies have shown that restricting dietary salicylates as an adjunct to treat AERD patients has demonstrated significant improvement in their symptoms [11, 12]. Our group's previous multicenter study [11] with 30 participants undergoing a low salicylate diet for 6 weeks presented a median reduction of 15 points in the SNOT 22 score. In the present study, with only 1 week under a low salicylate diet, the participants demonstrated an overall reduction in the SNOT-22 scores of 10 points. Both a placebo and Hawthorne effect are realistic possibilities for this effect, but continued observance of the diet (with some allowances) is evidence to the contrary.

The symptomatic improvement presented in our study overcomes the minimal clinically important difference

(MCID) of 9 points, described by Chowdhury et al. [13] in patients with chronic rhinosinusitis undergoing continued appropriate medical therapy. On the other hand, Phillips et al. [22] describe a MCID for medically managed CRS patients of 12, which is higher than the overall median value on the LS group. In this regard, none of these studies specify patients with AERD, making comparison to our study results a challenge. The symptomatic domain analysis of SNOT 22 is performed to segment the quality of life analysis into distinct sections, which can work as references for treatment guidance or therapy effectiveness analysis [13]. For patients with CRS, the psychological and sleep dysfunction domains demonstrate significant associations with productivity loss [23]. As such, there may be potential for the low salicylate diet to help AERD patients improve productivity and their overall quality of life.

The short duration of the diet was chosen based on the half-life of CysLTs and the difficulty with adherence to the restrictiveness of the low salicylate diet. It was hoped that by choosing 1 week, patients would be able to provide maximal adherence to both the HS and LS diets. Additionally, the half-life for salicylates is somewhere between 2 and 30 h. Therefore, a washout period was not included as measurements of both Cys-LTS and SNOT-22 was performed at the end of the week period. It is conceivable that the time period of investigating the diet may have been affected by the half-life of salicylates. The two previous studies investigating salicylate diet in AERD patients had a 6 week time course on the diet, compared to 1 week in the current study. Given the presented subjective symptom outcomes, 1 week under a low salicylate diet already provides AERD patients with overall symptomatic improvement.

Measurement of urinary LTS is possible using a variety of techniques. As mentioned, our study utilized an ELISA based methodology as per Baxter et al. [15]. Other reports suggest that utilizing a liquid chromatography followed by tandem mass spectrometry and normalizing to urinary creatinine levels may be a clinically valid technique in the assessment of urinary leukotrienes as a biomarker of inflammation in diseases such as AERD. It is possible that our results would differ using the aforementioned methodology [15, 24].

Lastly, the low number of patients is also a limitation of this study, but on top of its design as a proof-of-concept study, recruitment was challenging given the need for three weekly visits after enrollment, and agreement to strictly adhere to the salicylate diet. Future studies should continue to investigate the mechanistic processes of dietary salicylates and their role in AERD. Increased control and recording of food salicylate intake amount, along with periodic measurements of inflammatory biomarkers throughout the dietary period, and a

follow-up time after the diet discontinuation, should be included as part of further studies.

## Conclusion

This study confirms the previous findings that a low-salicylate diet decreases AERD patients' symptoms as measured by SNOT-22. There was reduction in the urinary cys-LTs levels in both groups, with some patients showing a reduction in Cys-LTs while on a LS diet. This was a proof of concept study again demonstrating subjective symptom improvement with reduction of nutritional salicylate intake in the treatment of AERD patients.

## Supplementary Information

The online version contains supplementary material available at <https://doi.org/10.1186/s40463-021-00502-4>.

**Additional file 1.** Salicylate-Free Diet Food Guide.

## Acknowledgements

Not applicable.

## Authors' contributions

KP and LS were responsible for the study conceptualization. TR, CS, BR, DS and LS, developed and implemented the study methodology. KP, BR, CS, and DS acquired the study data. KP, CS, TR, DS, and LS performed the data analysis. BR and LS supervised the study procedures. KP, DS, BR and TR wrote the original study draft. TR, DS and LS reviewed and edited the final manuscript. All authors read and approved the final manuscript.

## Funding

Not applicable.

## Availability of data and materials

Not applicable.

## Declarations

### Ethics approval and consent to participate

Informed consent was obtained from all individual participants included in the study. This study was performed in line with the principles of the Declaration of Helsinki. Approval was granted by the Western University Health Science Research Ethics Board (March 01, 2013/No. 103330), and registered at [www.clinicaltrials.gov](http://www.clinicaltrials.gov) as NCT01778465.

### Consent for publication

Not applicable.

### Competing interests

The authors declare that they have no competing interests.

### Author details

<sup>1</sup>Department of Otolaryngology – Head & Neck Surgery, Schulich Medicine & Dentistry, Western University, London Health Sciences Centre, St. Joseph's Hospital, London, Ontario, Canada. <sup>2</sup>Department of Medicine, Western University, London, ON, Canada. <sup>3</sup>Division of Otolaryngology – Department of Surgery, McMaster University, Hamilton, ON, Canada.

Received: 16 July 2020 Accepted: 22 February 2021

Published online: 23 April 2021

## References

1. Samter M. Intolerance to aspirin. *Ann Intern Med.* 1968;68(5):975–83. <https://doi.org/10.7326/0003-4819-68-5-975>.

2. White AA, Stevenson DD. Aspirin-exacerbated respiratory disease. *N Engl J Med*. 2018;379(11):1060–70. <https://doi.org/10.1056/NEJMra1712125>.
3. Laidlaw TM, Kidder MS, Bhattacharyya N, Xing W, Shen S, Milne GL, et al. Cysteinyl leukotriene overproduction in aspirin-exacerbated respiratory disease is driven by platelet-adherent leukocytes. *Blood*. 2012;119(16):3790–8. <https://doi.org/10.1182/blood-2011-10-384826>.
4. Laidlaw TM. Pathogenesis of NSAID-induced reactions in aspirin-exacerbated respiratory disease. *World J Otorhinolaryngol - Head Neck Surg*. 2018;4(3):162–8. <https://doi.org/10.1016/j.wjorl.2018.08.001>.
5. Kennedy DW. Aspirin exacerbated respiratory disease (AERD) treatment revisited. *Int Forum Allergy Rhinol*. 2019;9(12):1399–400. <https://doi.org/10.1002/alr.22496>.
6. Nayan S, Maby A, Nutr B, Endam LM, Desrosiers M. Dietary modifications for refractory chronic rhinosinusitis? Manipulating diet for the modulation of inflammation. *Am J Rhinol Allergy*. 2015;29(6):e170–4. <https://doi.org/10.2500/ajra.2015.29.4220>.
7. Sakalar EG, Muluk NB, Kar M, Cingi C. Aspirin-exacerbated respiratory disease and current treatment modalities. *Eur Arch Otorhinolaryngol*. 2017;274(3):1291–300. <https://doi.org/10.1007/s00405-016-4273-1>.
8. Lawrence JR, Peter R, Baxter GJ, Robson J, Graham AB, Paterson JR. Urinary excretion of salicylic and salicylic acids by non-vegetarians, vegetarians, and patients taking low dose aspirin. *J Clin Pathol*. 2003;56(9):651–3. <https://doi.org/10.1136/jcp.56.9.651>.
9. Wood A, Baxter G, Thies F, Kyle J, Duthie G. A systematic review of salicylates in foods: estimated daily intake of a Scottish population. *Mol Nutr Food Res*. 2011;55:7–14.
10. Duthie GG, Wood AD. Natural salicylates: foods, functions and disease prevention. *Food Funct*. 2011;2(9):515–20. <https://doi.org/10.1039/c1fo10128e>.
11. Sommer DD, Rotenberg BW, Sowerby LJ, Lee JM, Janjua A, Witterick IJ, et al. A novel treatment adjunct for aspirin exacerbated respiratory disease: the low-salicylate diet: a multicenter randomized control crossover trial. *Int Forum Allergy Rhinol*. 2016;6(4):385–91. <https://doi.org/10.1002/alr.21678>.
12. Sommer DD, Hoffbauer S, Au M, Sowerby LJ, Gupta MK, Nayan S. Treatment of aspirin exacerbated respiratory disease with a low salicylate diet: a pilot crossover study. *Otolaryngol Head Neck Surg*. 2015;152(1):42–7. <https://doi.org/10.1177/0194599814555836>.
13. Chowdhury NI, Mace JC, Bodner TE, Alt JA, Deconde AS, Levy JM, et al. Does medical therapy improve SinoNasal outcomes Test-22 domain scores? An analysis of clinically important differences. *Laryngoscope*. 2019;129(1):31–6. <https://doi.org/10.1002/lary.27470>.
14. Hare LG, Woodside JV, Young IS. Dietary salicylates. *J Clin Pathol*. 2003;56(9):649–50. <https://doi.org/10.1136/jcp.56.9.649>.
15. Baxter GJ, Lawrence JR, Graham AB, Wiles D, Paterson JR. Identification and determination of salicylic acid and salicylic acid in urine of people not taking salicylate drugs. *Ann Clin Biochem*. 2002;39(1):50–5. <https://doi.org/10.1258/0004563021901739>.
16. Fritz CO, Morris PE, Richler JJ. Effect size estimates: current use, calculations, and interpretation. *J Exp Psychol Gen*. 2012;141(1):2–18. <https://doi.org/10.1037/a0024338>.
17. Rodríguez-Jiménez JC, Moreno-Paz FJ, Terán LM, Guaní-Guerra E. Aspirin exacerbated respiratory disease: current topics and trends. *Respir Med*. 2018;135:62–75. <https://doi.org/10.1016/j.rmed.2018.01.002>.
18. Roland LT, Nagy C, Wang H, Moore R, Cahill KN, Laidlaw TM, et al. Treatment practices for aspirin-exacerbated respiratory disease: analysis of a national insurance claims database. *Int Forum Allergy Rhinol*. 2020;10(2):190–3. <https://doi.org/10.1002/alr.22471>.
19. Ibrahim C, Singh K, Tsai G, Huang D, Mazza J, Rotenberg B, et al. A retrospective study of the clinical benefit from acetylsalicylic acid desensitization in patients with nasal polyposis and asthma. *Allergy Asthma Clin Immunol*. 2014;10:64.
20. Kowalski M. Aspirin-sensitive rhinosinusitis and asthma. *Clin Allergy Immunol*. 2007;19:147–75.
21. Vento SI, Ertama LO, Hytönen ML, Wolff CHJ, Malmberg CHO. Nasal polyposis: clinical course during 20 years. *Ann Allergy Asthma Immunol*. 2000;85(3):209–14. [https://doi.org/10.1016/S1081-1206\(10\)62468-4](https://doi.org/10.1016/S1081-1206(10)62468-4).
22. Phillips KM, Hoehle LP, Caradonna DS, Gray ST, Sedaghat AR. Minimal clinically important difference for the 22-item Sinonasal Outcome Test in medically managed patients with chronic rhinosinusitis. *Clin Otolaryngol*. 2018;43(5):1328–34. <https://doi.org/10.1111/coa.13177>.
23. Chowdhury NI, Mace JC, Smith TL, Rudmik L. What drives productivity loss in chronic rhinosinusitis? A SNOT-22 subdomain analysis. *Laryngoscope*. 2018;128(1):23–30. <https://doi.org/10.1002/lary.26723>.
24. Lueke AJ, Meeusen JW, Donato LJ, Gray AV, Butterfield JH, Saenger AK. Analytical and clinical validation of an LC–MS/MS method for urine leukotriene E4: a marker of systemic mastocytosis. *Clin Biochem*. 2016;49(13–14):979–82. <https://doi.org/10.1016/j.clinbiochem.2016.02.007>.

## Publisher's Note

Springer Nature remains neutral with regard to jurisdictional claims in published maps and institutional affiliations.

**Ready to submit your research? Choose BMC and benefit from:**

- fast, convenient online submission
- thorough peer review by experienced researchers in your field
- rapid publication on acceptance
- support for research data, including large and complex data types
- gold Open Access which fosters wider collaboration and increased citations
- maximum visibility for your research: over 100M website views per year

**At BMC, research is always in progress.**

Learn more [biomedcentral.com/submissions](https://biomedcentral.com/submissions)

