

## Down-regulation of circular RNA *ITCH* and *circHIPK3* in gastric cancer tissues

Sara GHASEMI<sup>1</sup> , Modjtaba EMADI-BAYGI<sup>2,3</sup> , Parvaneh NIKPOUR<sup>1,4,\*</sup> 

<sup>1</sup>Department of Genetics and Molecular Biology, Faculty of Medicine, Isfahan University of Medical Sciences, Isfahan, Iran

<sup>2</sup>Research Institute of Biotechnology, Shahrekord University, Shahrekord, Iran

<sup>3</sup>Department of Genetics, Faculty of Basic Sciences, Shahrekord University, Shahrekord, Iran

<sup>4</sup>Child Growth and Development Research Center, Research Institute for Primordial Prevention of Non-Communicable Disease, Isfahan University of Medical Sciences, Isfahan, Iran

Received: 07.06.2018 • Accepted/Published Online: 22.10.2018 • Final Version: 18.04.2018

**Background/aim:** Gastric cancer (GC) is one of the major causes of cancer mortality worldwide. As a novel type of endogenous noncoding RNAs, circular RNAs (circRNAs) are formed by a covalent link between 5' and 3' ends. They are very stable and abundant in eukaryotes. As there were no reported studies on the expression profiles of *circular RNA ITCH* (*cir-ITCH*) and *circHIPK3* in GC, in the current study, we aimed to delineate the expression profiles and clinicopathological relevance of these two circRNAs in GC tissues compared to their paired adjacent noncancerous tissues.

**Materials and methods:** Quantitative real-time polymerase chain reaction was performed to evaluate *cir-ITCH* and *circHIPK3* expression in 30 paired gastric cancer tissues. The clinicopathological relevance of these two circular RNAs' expression levels with gastric cancer was further examined.

**Results:** Our results showed that the expression of *cir-ITCH* and *circHIPK3* were significantly downregulated in GC tumoral tissues compared with their paired adjacent nonneoplastic counterparts. Further analyses showed that *cir-ITCH* and *circHIPK3* expression levels were related with numerous clinicopathological features of tumoral tissues.

**Conclusion:** *Cir-ITCH* and *circHIPK3* may have imperative roles in GC and serve in the future as potential prognostic biomarkers in GC.

**Key words:** Gastric cancer, circular RNAs, *cir-ITCH*, *circHIPK3*, gene expression

### 1. Introduction

Gastric cancer (GC) is one of the unresolved causes of cancer mortality worldwide with a high rate of incidence and death (1,2). It is the second and fourth most common cancer leading to a high death rate in men and women, respectively (3,4). Lack of reliable diagnostic methods in early stages of GC denies the majority of patients an effective treatment (3,5). Accordingly, to overcome these problems, it is critical to find novel biomarkers to improve the chance to diagnose GC in its early stages.

As a novel type of endogenous noncoding RNAs, circular RNAs (circRNAs) are formed by a covalent link between 5' and 3' ends (6–8). They are very stable and abundant in eukaryotes (9–11). Recent reports show that circRNAs can function as microRNA sponges, regulate gene expression, linear RNA transcription and protein production (7). Association between circRNAs and several diseases like atherosclerotic vascular disease (12), Alzheimer (13), and various cancer types (14) has

been documented and could represent these molecules as attractive novel biomarkers.

*cir-ITCH* is a circular RNA which is derived from Itchy E3 ubiquitin protein ligase (*ITCH*) gene (10,15). Deregulation of *cir-ITCH* has been recently reported in esophageal squamous cell carcinoma (ESCC) (16), colorectal cancer (17), and lung cancer. Further functional studies showed that *cir-ITCH* can act as microRNA sponge thus increasing the level of parental gene, *ITCH* (15).

In 2016, by characterizing circRNA, transcripts using RNA-sequencing (RNA-seq) from six normal tissues (brain, colon, heart, liver, lung, and stomach) and seven cancerous tissues including gastric cancer, Zheng et al. introduced an abundant circRNA derived from Exon2 of the *HIPK3* gene, termed *circHIPK3*. Their functional assays revealed that *circHIPK3* may function to modulate the growth of human cells (18).

As there were no reported studies on the expression profiles of these two circular RNAs in gastric cancer, in

\* Correspondence: pnikipour@med.mui.ac.ir

the current study, we aimed to delineate the expression profiles of *cir-ITCH* and *circHIPK3* in gastric cancer tissues compared to their paired adjacent noncancerous tissues. Then, the clinicopathological relevance of these two circular RNAs with gastric cancer was further examined.

## 2. Materials and methods

### 2.1. Clinical specimens

A total of 30 pairs of gastric cancer and matched adjacent nontumoral tissues were obtained from patients with gastric cancer. The specimens were collected by the Iran National Tumor Bank, which is funded by the Cancer Institute of Tehran University, for Cancer Research (19–21). There, the tissues are immediately snap-frozen in the liquid nitrogen. Informed written consent was taken from the patients by Iran National Tumor Bank. The study protocol was approved by the Ethics Committee of Isfahan University of Medical Sciences and was in accordance with the Helsinki Declaration. The clinical staging of the tumor samples was based on the seventh edition of the American Joint Committee on Cancer classification (AJCC) cancer staging manual for stomach (22).

### 2.2. Total RNA extraction and complementary DNA (cDNA) synthesis

TRIzol® reagent (Invitrogen, California, USA) was used to extract total RNA from powdered gastric cancer tissues, following the manufacturer's instructions. One percent agarose gel electrophoresis was used to assess the quality of the RNA. Purity and quantity of the total RNA were determined with Nanodrop instrument (Nanolytik, Düsseldorf, Germany). DNase treatment was performed by using DNase set (Fermentas, Vilnius, Lithuania) for eliminating genomic DNA. cDNA was synthesized by using PrimeScript™ RT reagent Kit (TaKaRa, Kusatsu, Shiga, Japan) according to manufacturer's protocol.

### 2.3. Quantitative real-time PCR and DNA sequencing

Applying the relative quantitative real-time RT-PCR, the expression levels of *cir-ITCH* and *circHIPK3* were

assessed compared to *GUSB* ( $\beta$ -Glucuronidase) as an internal control (23). Divergent primers, rather than convergent primers, were designed with GeneRunner software, version 4.0 to amplify the circular RNAs. Basic local alignment search tool (BLAST) (<http://blast.ncbi.nlm.nih.gov/Blast.cgi>) was used for confirmation of unity attachment of divergent primers to genome. A set of convergent primers in an opposite direction were designed to amplify only the linear forms. The sequences of primers are listed in Table 1. RealQ Plus 2x Master Mix, green (high ROX) (AMPLIQON, Odense M, Denmark) was applied in an Applied Biosystems StepOnePlus™ instrument for PCR amplification. The amplification conditions consisted of an initial denaturation at 95 °C for 2 min, then 30 cycles of denaturation at 95 °C for 30 s, annealing at 55.9 °C for *cir-ITCH* and *circHIPK3* and at 60 °C for *GUSB* genes for 60 s, and the extension step for 30 s at 72 °C. Furthermore, the PCR products of some samples were sequenced with an Applied Biosystems 3730XL sequencer (Macrogen, Seoul, South Korea) to verify the specific amplification of circular RNAs.

### 2.4. Statistical gene expression analysis

The  $\Delta C_t$  method was applied to relatively quantify the levels of gene expressions. All experiments were performed at least three times and expressed as means  $\pm$  standard error of mean (SEM). To check the normal distribution of samples, Kolmogorov–Smirnov test was applied. Student's t-test, analysis of variance (ANOVA), and chi-square tests were performed to examine statistical significances. Data were analyzed by SPSS software, version 16.0 (SPSS, Chicago, IL, USA) and P-values less than 0.05 were considered statistically significant.

## 3. Results

### 3.1. PCR optimization of the *cir-ITCH* and *circHIPK3*

We designed two sets of primer pairs: a divergent primer set for only amplification of the circular form and a convergent one to amplify the linear form. We utilized

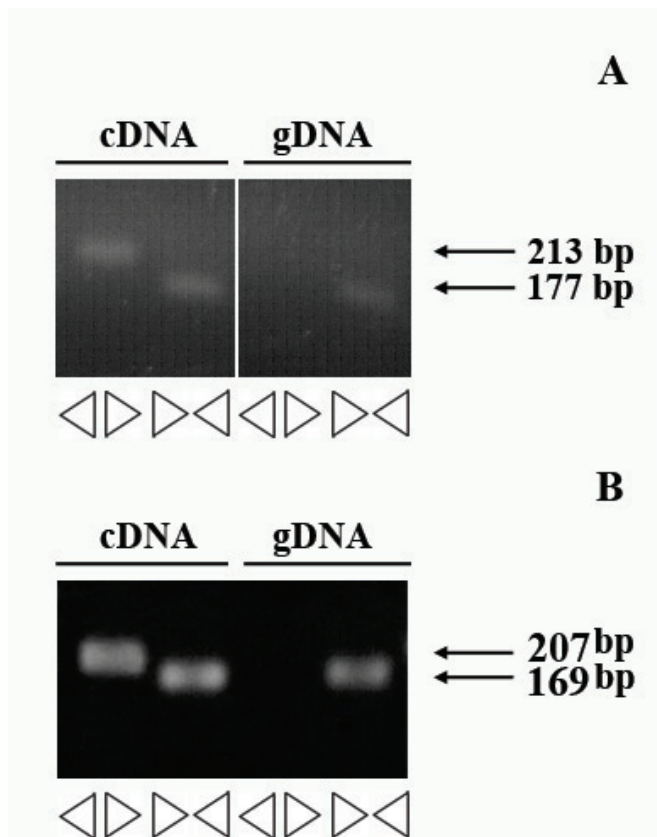
**Table 1.** The sequences of primers used in the current study.

Name	Sequence (5'--> 3')	T <sub>a</sub> for PCR (°C)	Amplicon size	
Divergent primers	hcircITCH-F1	GTCCGGAACATATGAACAATG	55.9	207 bp
	hcircITCH-R1	CTCTGTTGGCTCTTTGTCAC		
	hcircHIPK3-F1	TATGTTGGTGGATCCTGTTC	55.9	213 bp
	hcircHIPK3-R1	AACTGCTTGGCTCTACTTTG		
Convergent primers	hlinITCH-F1	GGTTCACCATCTGCCACTTC	60.7	169 bp
	hlinITCH-R1	AGGGAGCTTGAGTTACAGGATT		
	hlinHIPK3-F1	GAAAGAAACTATCCACGGAC	54.4	177 bp
	hlinHIPK3-R1	TATGACCTTTGTAGCACCTG		

the cDNA and DNA of a human lung adenocarcinoma epithelial cell line (A540) for PCR optimization. As expected, no amplification was seen with divergent primers on DNA template, whereas we could detect the expected bands corresponding to circular forms of RNAs (Figure 1). Products giving a band were sequenced by conventional Sanger capillary methods and compared to the reference sequence. Sanger sequencing of the RT-PCR products of *cir\_ITCH* and *circHIPK3* showed that convergent primers could specifically amplify the circular forms of RNAs (data not shown).

### 3.2. *cir\_ITCH* and *circHIPK3* expression levels were significantly downregulated in GC tumoral tissues and were significantly correlated with various clinicopathological parameters

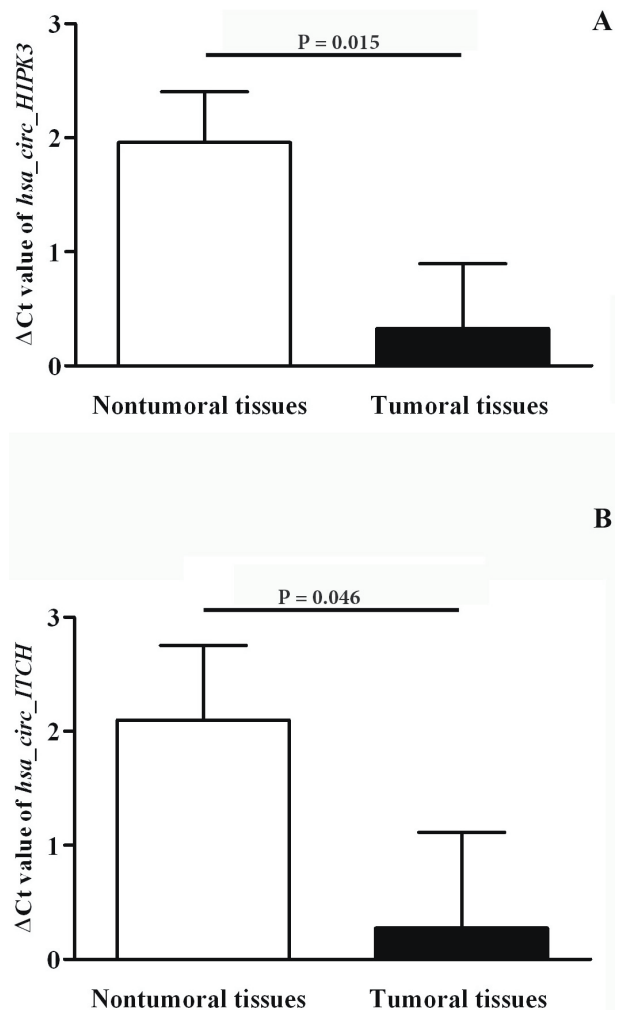
The results of real-time qRT-PCR experiments showed that expression of both *cir\_ITCH* and *circHIPK3* were significantly downregulated ( $P = 0.015$  and  $P = 0.046$ , respectively) in GC tumoral tissues compared with their paired adjacent nontumoral tissues (Figure 2). Analyzing



**Figure 1.** Identification of *circHIPK3* and *cir\_ITCH* in a human lung adenocarcinoma epithelial cell line (A540). A) RT-PCR products with divergent and convergent primers of *circHIPK3* verified that specificity of designed primers. B) Specific divergent primers of *cir\_ITCH* could amplify a 207 bp PCR product using a cDNA as a PCR template but not a genomic DNA (gDNA).

melting curves showed single peaks with neither primer dimers nor nonspecific amplification, further confirming the specificity of *cir\_ITCH* and *circHIPK3* amplifications.

Further analyses showed that *circHIPK3* expression was related with numerous clinicopathological features of tumoral tissues. As shown in Table 2, *circHIPK3* expression level was significantly associated with age ( $P = 0.002$ ) and M classification ( $P = 0.045$ ). GC patients were further classified into two groups based on the median value of *circHIPK3* expression in tumoral tissues. *circHIPK3* expression levels stratified based on median value showed a significant association with age ( $P = 0.01$ ) (Table 3). Same analyses on *cir\_ITCH* showed a significant correlation between circRNA expression levels and age ( $P = 0.0005$ ) and tumor grades ( $P = 0.02$ ) (Tables 4 and 5). We furthermore tested



**Figure 2.** Relative expression of *circHIPK3* and *cir\_ITCH* in tumoral and nontumoral gastric tissue samples. A higher  $\Delta\text{Ct}$  value shows higher relative expression levels. Error bars stand for standard error of mean (SEM). A) *circHIPK3*, B) *cir\_ITCH*.

**Table 2.** The relationship between *circHIPK3* expression level (based on mean  $\pm$  SEM gene expression level) in GC tissues with clinicopathological parameters.

Characteristics	Numbers (#30)(%)	<i>circHIPK3</i> (mean $\pm$ SEM*)	P-value
Gender			
Male	17(56.67)	0.29 $\pm$ 0.66	0.25
Female	13(44.33)	0.37 $\pm$ 0.46	
Age (years)			
$\geq$ 70	15(50.00)	1.93 $\pm$ 0.44	<b>0.002**</b>
<70	15(50.00)	-1.28 $\pm$ 0.55	
Depth of invasion			
T2	1(3.33.00)	-3.21 $\pm$	0.14
T3-T4	29(96.67)	0.45 $\pm$ 0.57	
N classification			
NX-N0	6(20.00)	-1.01 $\pm$ 0.81	0.16
N1	11(36.67)	1.52 $\pm$ 0.44	
N2-N3	13(43.33)	-0.07 $\pm$ 0.53	
M classification			
MX	5(16.67)	-0.47 $\pm$ 0.23	<b>0.045**</b> (M0 vs. M1)
M0	19(63.33)	1.31 $\pm$ 0.54	
M1	6(20.00)	-1.89 $\pm$ 0.66	
TNM stage			
I-II	16(53.33)	0.86 $\pm$ 0.56	0.16
III	8(26.67)	0.92 $\pm$ 0.44	
IV	6(20.00)	-1.89 $\pm$ 0.66	
Perineural invasion			
Negative	12(40.00)	0.08 $\pm$ 0.66	0.28
Positive	18(60.00)	0.57 $\pm$ 0.51	
Lymphatic invasion			
Negative	6(20.00)	0.91 $\pm$ 0.53	0.20
Positive	24(80.00)	0.24 $\pm$ 0.46	
Tumor size (cm)			
$\geq$ 5	25(83.33)	0.23 $\pm$ 0.57	0.40
<5	5(16.67)	0.79 $\pm$ 0.64	
Tumor grades			
I	9(30.00)	-0.84 $\pm$ 0.67	0.25
II	8(26.67)	0.98 $\pm$ 0.61	
III	13(43.33)	0.73 $\pm$ 0.48	
Tumor types			
Diffuse	14(46.67)	0.78 $\pm$ 0.49	0.38
Intestinal	16(53.33)	-0.07 $\pm$ 0.64	

\* A higher  $\Delta C_t$  value indicates higher expression.

\*\* Statistically significant.

if there is any correlation between gene expression levels and the anatomical location of tumors within the stomach. Although the stomach is anatomically divided into four regions, i.e. the cardia, fundus, body, and pylorus, the two main regions in our patient cohort were the cardia and the main body. Therefore, we compared the gene expressions

between these two groups (body vs. cardia) and found no statistically significant difference in gene expressions of the two examined circular RNAs between tumors in the main body of the stomach and the ones in cardia (1.06  $\pm$  1.03 vs. -1.54  $\pm$  1.67 for *circ-ITCH* (P = 0.20) and 1.14  $\pm$  0.62 vs. -0.57  $\pm$  1.18 for *circHIPK3* (P = 0.22)).

**Table 3.** The relationship between *circHIPK3* expression level (as divided into two groups based on the median of  $\Delta C_t$ ) in GC tissues with clinicopathological parameters

Characteristic	Number (#30)	<i>circHIPK3</i> expression		P-value
		Low (#15)	High (#15)	
Gender				
Male	17	9	8	0.50
Female	13	6	7	
Age (years)				<b>0.01**</b>
$\geq 70$	15	4	11	
$< 70$	15	11	4	
Depth of invasion				0.50
T2	1	1	-	
T3-T4	29	14	15	
N classification				0.23
NX-N0	6	3	3	
N1	11	4	7	
N2-N3	13	8	5	
M classification				0.09 (M0 vs. M1)
MX	5	4	1	
M0	19	7	12	
M1	6	4	2	
TNM stage				0.31
I-II	16	7	9	
III	8	4	4	
IV	6	4	2	
Perineural invasion				0.50
Negative	12	6	6	
Positive	18	9	9	
Lymphatic invasion				0.32
Negative	6	2	4	
Positive	24	13	11	
Tumor size (cm)				0.50
$\geq 5$	25	12	13	
$< 5$	5	3	2	
Tumor grades				0.21
I	9	6	3	
II	8	4	4	
III	13	5	8	
Tumor types				0.35
Diffuse	14	6	8	
Intestinal	16	9	7	

\* A higher  $\Delta C_t$  value indicates higher expression.

\*\* Statistically significant.

#### 4. Discussion

In the current study, we explored the expression levels of *circHIPK3* and *circITCH* in gastric cancer tissues compared to their paired adjacent noncancerous tissues as well as their clinicopathological significance.

Our results showed a significant underexpression of *circHIPK3* in GC tumoral tissues. Using RNA sequencing (RNA-seq), Zheng et al. (18) characterized an abundant circular RNA derived from the *HIPK3* gene, termed *circHIPK3*. They reported the significant overexpression

**Table 4.** The relationship between *cir\_ITCH* expression level (based on mean  $\pm$  SEM gene expression level) in GC tissues with clinicopathological parameters

Characteristics	Numbers (#30)(%)	<i>cir_ITCH</i> (mean $\pm$ SEM*)	P-value
Gender			
Male	16(53.33)	0.31 $\pm$ 0.93	0.42
Female	14(46.66)	0.23 $\pm$ 0.75	
Age (years)			<b>0.0005**</b>
$\geq$ 70	14(46.66)	2.66 $\pm$ 0.76	
<70	16(53.33)	-2.11 $\pm$ 0.69	
Depth of invasion			0.50
T2	1(3.33)	0.45 $\pm$	
T3-T4	29(96.67)	0.27 $\pm$ 0.85	
N classification			0.45
NX-N0	6(20.00)	-1.18 $\pm$ 1.25	
N1	11(36.67)	0.89 $\pm$ 0.87	
N2-N3	13(43.33)	0.42 $\pm$ 0.61	
M classification			0.16 (M0 vs. M1)
MX	5(16.67)	-2.24 $\pm$ 0.33	
M0	19(63.33)	1.76 $\pm$ 0.63	
M1	6(20.00)	-1.62 $\pm$ 1.34	
TNM stage			0.23
I-II	16(53.33)	1.19 $\pm$ 0.68	
III	8(26.67)	0.41 $\pm$ 0.60	
IV	6(20.00)	-2.35 $\pm$ 1.35	
Perineural invasion			0.44
Negative	12(40.00)	-0.34 $\pm$ 0.96	
Positive	18(60.00)	0.68 $\pm$ 0.77	
Lymphatic invasion			0.08
Negative	6(20.00)	3.28 $\pm$ 1.60	
Positive	24(80.00)	-0.04 $\pm$ 0.89	
Tumor size (cm)			0.19
$\geq$ 5	25(83.33)	-0.02 $\pm$ 0.89	
<5	5(16.67)	1.72 $\pm$ 0.49	
Tumor grades			<b>0.02**</b>
I	9(30.00)	-2.36 $\pm$ 0.84	
II	8(26.67)	-0.77 $\pm$ 0.61	
III	13(43.33)	2.74 $\pm$ 0.77	
Tumor types			0.06
Diffuse	14(46.66)	1.68 $\pm$ 0.82	
Intestinal	16(46.66)	-0.96 $\pm$ 0.82	

\* A higher  $\Delta C_t$  value indicates higher expression.

\*\* Statistically significant.

of *circHIPK3* in liver cancer compared with their matched normal tissues. In 2017, Li et al. (24) measured the relative expression of *circHIPK3* in 44 pairs of bladder cancer and normal bladder tissues. Consistent with their RNA-seq results, they observed a significant decrease of *circHIPK3* levels in 79.5% of bladder tumoral tissues compared to

their normal counterparts. Overexpression of *circHIPK3* in bladder cancer cell lines could suppress migration, invasion, and angiogenesis in vitro and inhibit bladder cancer growth and metastasis in vivo. Their findings support the tumor-suppressive activity of *circHIPK3* in bladder cancer. In agreement with the results of expression

**Table 5.** The relationship between *cir\_ITCH* expression level (as divided into two groups based on the median of  $\Delta C_t$ ) in GC tissues with clinicopathological parameters.

Characteristic	Number (#30)(%)	<i>cir_ITCH</i> expression		P-value
		Low (#15)	High (#15)	
Gender				
Male	16	7	9	0.36
Female	14	8	6	
Age (years)				<b>0.0005**</b>
$\geq 70$	14	2	12	
$< 70$	16	13	3	
Depth of invasion				0.50
T2	1	1	0	
T3-T4	29	14	15	
N classification				0.08
NX-N0	6	5	1	
N1	11	5	6	
N2-N3	13	5	8	
M classification				0.28 (M0 vs. M1)
MX	5	5	0	
M0	19	7	12	
M1	6	3	3	
TNM stage				0.31
I-II	16	7	9	
III	8	4	4	
IV	6	4	2	
Perineural invasion				0.35
Negative	12	5	7	
Positive	18	10	8	
Lymphatic invasion				0.34
Negative	6	2	4	
Positive	24	13	11	
Tumor size (cm)				0.50
$\geq 5$	25	12	13	
$< 5$	5	3	2	
Tumor grades				<b>0.04**</b>
I	9	7	2	
II	8	4	4	
III	13	4	9	
Tumor types				0.13
Diffuse	14	5	9	
Intestinal	16	10	6	

\* A higher  $\Delta C_t$  value indicates higher expression.

\*\* Statistically significant.

of this circular RNA in bladder cancer (24), we also observed the relative downregulation of *cirHIPK3* in gastric cancer tumoral tissues. The discrepancy between Li et al. (24) and our results vs. findings of Zheng et al. (18) on liver cancer may be ascribed to the potential tissue-specific expression and function of *cirHIPK3*.

We furthermore analyzed the relative expression of *cir\_ITCH* in GC and found that it was significantly underexpressed in tumoral tissues compared to the nontumoral adjacent tissues. The association between *cir\_ITCH* and cancer was firstly described in a study on esophageal squamous cell carcinoma conducted by

Li et al. (16). *circ-ITCH* was highly and significantly expressed in around 70.61% of tumoral tissues compared to their paired nontumoral tissues (16). Evaluation of *circ-ITCH* expression in colorectal cancer (17) showed its underexpression in 75.6% of cancerous tissues compared with the adjacent noncancerous tissues. In 2016, Wan et al. (15) evaluated the expression levels of *circ-ITCH* in a cohort of lung cancer compared to their paired adjacent normal tissues. Compared to non-tumoral lung tissues, *circ-ITCH* showed a significantly lower expression in 73.08% of tumoral tissues (15). Taken together, our result on gastric cancer is consistent with those of previous reports on ESCC (16), colorectal cancer (17), and lung cancer (15).

In 2017, Li et al. (24) reported a negative correlation of *circHIPK3* expression levels with bladder cancer grade, invasion, stage and the lymph nodes metastasis. In the same vein, we also observed that those patients with metastasis had a significant lower expression levels for this circular RNA. Gastric cancer patients with higher TNM stage or positive lymphatic invasion had lower levels of *circHIPK3*, although these correlations were not significant.

## References

- Keeney S, Bauer TL. Epidemiology of adenocarcinoma of the esophagogastric junction. *Surg Oncol Clin N Am* 2006; 15: 687-696.
- Malekzadeh R, Derakhshan MH, Malekzadeh Z. Gastric cancer in Iran: epidemiology and risk factors. *Arch Iran Med* 2009; 12: 576-583.
- Mousavi SM, Gouya MM, Ramazani R, Davanlou M, Hajsadeghi N, Seddighi Z. Cancer incidence and mortality in Iran. *Ann Oncol* 2009; 20: 556-563.
- Kolahdoozan S, Sadjadi A, Radmard AR, Khademi H. Five common cancers in Iran. *Arch Iran Med* 2010; 13: 143-146.
- Riquelme I, Saavedra K, Espinoza JA, Weber H, García P, Nervi B, Garrido M, Corvalán AH, Roa JC, Bizama C. Molecular classification of gastric cancer: towards a pathway-driven targeted therapy. *Oncotarget* 2015; 6: 24750-24779.
- Chen LL, Yang L. Regulation of circRNA biogenesis. *RNA Biol* 2015; 12: 381-388.
- Qu S, Yang X, Li X, Wang J, Gao Y, Shang R, Sun W, Dou K, Li H. Circular RNA: a new star of noncoding RNAs. *Cancer Lett* 2015; 365: 141-148.
- Sanger HL, Klotz G, Riesner D, Gross HJ, Kleinschmidt AK. Viroids are single-stranded covalently closed circular RNA molecules existing as highly base-paired rod-like structures. *P Natl Acad Sci USA* 1976; 73: 3852-3856.
- Li Y, Zheng Q, Bao C, Li S, Guo W, Zhao J, Chen D, Gu J, He X, Huang S. Circular RNA is enriched and stable in exosomes: a promising biomarker for cancer diagnosis. *Cell Res* 2015; 25: 981.
- Memczak S, Jens M, Elefsinioti A, Torti F, Krueger J, Rybak A, Maier L, Mackowiak SD, Gregersen LH, Munschauer M et al. Circular RNAs are a large class of animal RNAs with regulatory potency. *Nature* 2013; 495: 333-338.
- Salzman J, Chen RE, Olsen MN, Wang PL, Brown PO. Cell-type specific features of circular RNA expression. *PLoS Genet* 2013; 9: e1003777.
- Burd CE, Jeck WR, Liu Y, Sanoff HK, Wang Z, Sharpless NE. Expression of linear and novel circular forms of an INK4/ARF-associated non-coding RNA correlates with atherosclerosis risk. *PLoS Genet* 2010; 6: e1001233.
- Lukiw WJ. Circular RNA (circRNA) in Alzheimer's disease (AD). *Front Genet* 2013; 4: 307.
- He J, Xie Q, Xu H, Li J, Li Y. Circular RNAs and cancer. *Cancer Lett* 2017; 396: 138-144.
- Wan L, Zhang L, Fan K, Cheng ZX, Sun QC, Wang JJ. Circular RNA-ITCH suppresses lung cancer proliferation via inhibiting the Wnt/beta-catenin pathway. *Biomed Res Int* 2016; 2016: 1579490.
- Li F, Zhang L, Li W, Deng J, Zheng J, An M, Lu J, Zhou Y. Circular RNA ITCH has inhibitory effect on ESCC by suppressing the Wnt/beta-catenin pathway. *Oncotarget* 2015;6:6001-13.

Furthermore, we found that the *circ-ITCH* expression level was significantly associated with age, metastasis, and cancer grades. Consistently, Wan et al. (15) reported a significant association between age and expression levels of this circular RNA in a cohort of lung cancer tissues.

## 5. Conclusions

In summary, our results showed that the expression of *circ-ITCH* and *circHIPK3* were significantly down regulated in GC tumoral tissues compared with their paired adjacent non-neoplastic counterparts. Further investigation of these preliminary results is needed to elucidate the precise functional roles of these two circular RNAs in gastric cancer pathogenesis. *circ-ITCH* and *circHIPK3* may serve in future as potential prognostic biomarkers in cancer.

## Acknowledgments

This original article was derived from the master's thesis of Sara GHASEMI and was supported in part by a research grant number 395259 from Isfahan University of Medical Sciences, Isfahan, Iran. The funding body had no role in the design of the study and collection, analysis, and interpretation of the data and in writing the manuscript.



17. Huang G, Zhu H, Shi Y, Wu W, Cai H, Chen X. cir-ITCH plays an inhibitory role in colorectal cancer by regulating the Wnt/ $\beta$ -catenin pathway. *PLoS one* 2015; 10: e0131225.
18. Zheng Q, Bao C, Guo W, Li S, Chen J, Chen B, Luo Y, Lyu D, Li Y, Shi G et al. Circular RNA profiling reveals an abundant circHIPK3 that regulates cell growth by sponging multiple miRNAs. *Nat Commun* 2016; 7: 11215.
19. Bahari F, Emadi-Baygi M, Nikpour P. miR-17-92 host gene, overexpressed in gastric cancer and its expression was negatively correlated with the metastasis. *Indian J Cancer* 2015; 52: 22-25.
20. Emadi-Baygi M, Nikpour P, Emadi-Andani E. SIX1 overexpression in diffuse-type and grade III gastric tumors: features that are associated with poor prognosis. *Adv Biomed Res* 2015; 4: 139.
21. Baratieh Z, Khalaj Z, Honardoost MA, Emadi-Baygi M, Khanahmad H, Salehi M, Nikpour P. Aberrant expression of PlncRNA-1 and TUG1: potential biomarkers for gastric cancer diagnosis and clinically monitoring cancer progression. *Biomark Med* 2017; 11: 1077-1090.
22. Washington K. 7th Edition of the AJCC cancer staging manual: stomach. *Ann Surg Oncol* 2010; 17: 3077-3079.
23. Baygi ME, Soheili ZS, Schmitz I, Sameie S, Schulz WA. Snail regulates cell survival and inhibits cellular senescence in human metastatic prostate cancer cell lines. *Cell Biol Toxicol* 2010; 26: 553-567.
24. Li Y, Zheng F, Xiao X, Xie F, Tao D, Huang C, Liu D, Wang M, Wang L, Zeng F et al. CircHIPK3 sponges miR-558 to suppress heparanase expression in bladder cancer cells. *EMBO Rep* 2017; 18: 1646-1659.