



Denaturing gradient gel electrophoresis and multi-SIR profiles of soil microbial communities from a karst doline at Aggtelek National Park, Hungary

Márton Mucsi^{1,2} · Gergely Krett² · Tibor Szili-Kovács¹ · János Móga³ · Andrea K. Borsodi^{2,4}

Received: 1 June 2020 / Accepted: 1 October 2020 / Published online: 8 October 2020
© The Author(s) 2020

Abstract

Soils play an important role in the ecosystem of karstic landscapes both as a buffer zone and as a source of acidity to belowground water. Although the microbiota of karstic soils is known to have a great effect on karstification processes, the activity and composition of these communities are largely unknown. This study gives a comparative analysis of soil microbial profiles from different parts of a doline located at Aggtelek, Hungary. The aim was to reveal the relationships between the vegetation type and genetic fingerprints and substrate utilisation (multi-SIR) profiles of the soil microbiota. Soil samples were collected in early and late springs along a transect in a doline covered with different types of vegetation. Genetic fingerprints of bacterial communities were examined by denaturing gradient gel electrophoresis (DGGE) based on the 16S rRNA gene, along with multi-SIR profiles of the microbial communities measured by the MicroResp method using 15 different carbon sources. Genetic fingerprinting indicated that vegetation cover had a strong effect on the composition of soil bacterial communities. Procrustean analysis showed only a weak connection between DGGE and multi-SIR profiles, probably due to the high functional redundancy of the communities. Seasonality had a significant effect on substrate usage, which can be an important factor to consider in future studies.

Keywords Karst soil · Bacteria · DGGE · Multi-SIR · MicroResp

Electronic supplementary material The online version of this article (<https://doi.org/10.1007/s12223-020-00828-y>) contains supplementary material, which is available to authorized users.

✉ Tibor Szili-Kovács
szili-kovacs.tibor@atk.hu

Márton Mucsi
mucsi.marton@atk.hu

¹ Institute for Soil Sciences and Agricultural Chemistry, Centre for Agricultural Research, Herman Ottó út 15, Budapest H-1022, Hungary

² Department of Microbiology, ELTE Eötvös Loránd University, Pázmány Péter sétány 1/c, Budapest H-1117, Hungary

³ Department of Physical Geography, ELTE Eötvös Loránd University, Pázmány Péter sétány 1/c, Budapest H-1117, Hungary

⁴ Danube Research Institute, Centre for Ecological Research, Karolina út 29, Budapest H-1113, Hungary

Introduction

Karstic landscapes provide many ecosystem services, such as the production of drinking water for about 25% of the global population (Ford and Williams 2007). Also, because of their special microclimatic effects, karst dolines provide refuge to many vascular plants (Bátori et al. 2014). In the past few centuries, however, human activities had great impact on karstic ecosystems by influencing both karst forming processes and ecosystem services (Móga et al. 2013; Gutiérrez et al. 2014).

The microbial ecology of subsurface waters and caves, and the role of microbes in direct weathering of carbonate rocks and formation of minerals are intensively studied fields (Barton and Northup 2007; Lian et al. 2008; Baskar et al. 2016). Besides these, individual indicator organisms in karstic waters are also studied during the monitoring of human effects on karstic ecosystems (Mulec et al. 2012). The microbial ecology of epikarstic soils, however, is rarely included in the karst

researches, despite the crucial role of soil microbiota playing in karstification processes.

The soil layer, when present, plays an important role as a buffer zone of water perturbations, as in most areas, the precipitation filtrates through the soil before reaching the subsurface aquifers (Williams 2008). Epikarstic soils are also hypothesised to have a huge impact on larger scale karst formation as the main source of acidity in subsurface waters (Williams 2008; Phillips 2016).

In Hungary, a few previous studies examined the relationship between karstic processes and soil microbiota. Bárány and Mezösi (1977) showed that in the case of dolines covered with grasslands, the number of culturable microbes in the upper 5 cm soil layer is mainly determined by the temperature, while in deeper layers, it is more related to soil moisture. That said, the number of microbes in different parts of a doline can be greatly influenced by the exposure, especially north vs south of the sampling site. It was also shown that microbial strains from terra rossa type soil types can have higher limestone corrosion abilities, than microbes from rendzinas (Darabos 1999).

Soil pH was recently shown to be the main factor in shaping the composition of belowground bacterial communities of karstic areas (Yun et al. 2016). Different vegetation types, however, are also known to correspond with belowground microbial populations (Hooper et al. 2000), mainly through the composition of plant litter and root exudates (Berg and Smalla 2009). Besides this, Kevei and Zámbo (1985) showed that the density of aerobic culturable bacteria is higher in dolines covered with forests, possibly because of more stable microclimatic – soil moisture and temperature – conditions.

In another study, soil microbial communities from two different Hungarian karst areas were compared by substrate induced respiration (SIR) and genetic fingerprinting by denaturing gradient gel electrophoresis (DGGE) (Knáb et al. 2012). The results showed that the structure of soil bacterial communities were clearly distinct in different sampling sites; however, microbial respiration rates only slightly differed in the top soil but more influenced by the soil depth.

Beside the widespread study of soil microbial community composition, in the last decade, the research of catabolic processes using fingerprinting methods also became a widely used in the assessment of soil functioning and in soil monitoring (Wakelin et al. 2013; Nazaries et al. 2015; Creamer et al. 2016). However, these methods have been rarely applied to epikarstic soils.

Therefore, this study aimed to reveal differences in the DGGE and multi-SIR profiles of soil microbial communities from a typical karst doline in the Aggtelek National Park, Hungary. The relationship between soil properties, vegetation cover and microbiota was investigated, as well as possible correlations between genetic and catabolic fingerprints of the

communities. Seasonal changes of the community fingerprints were also assessed.

Materials and methods

Study site and sampling

The doline is located in the karst of Aggtelek National Park, near Lake Vörös (48.4715° N, 20.5426° E, 326 m above sea level, Fig. 1). As a result of reforestation, the southern part and the bottom of the doline is now covered by forest dominated by *Acer campestre* and *Carpinus betulus* without significant understory. On the northern slope, the forest is gradually transitioned into diverse grassland which is maintained by mowing and chopping of shrubs, resulting in a mosaic forest-steppe vegetation (see Online Resource 1–5 for photos of the vegetation at the sampling sites). The soils in the doline were identified according to the Hungarian Soil Classification System by Kiss (2012) as brown forest soil with clay illuviation at southern slope, red clay rendzina at northern slope and slope sediment soil at the bottom of the doline, all three developed on red clay. The former two can be classified in the WRB system as leptic Luvisols (clayic, chromic) and the soils from the doline bottom as Regosols.

The samplings were performed at the early (April) and late (June) spring period. Five sampling sites were set in north-south direction, with two sampling sites on the southern slope, one at the bottom of the doline and further two on the northern slope (Fig. 1). Triplicate soil samples from each site were collected by spade from the 0–10 cm layer of 1 m × 1 m quadrates (15 samples altogether). Samples were stored in PE zip-lock bags at 4 °C until the physical-chemical and catabolic experiments. Approximately 10 g soil of each sample was immediately put in sterile tubes and was stored at –20 °C for molecular analysis.

Soil physical and chemical properties

Soil water content was determined by drying 15 g of each sample at 105 °C. pH-KCl and pH-H₂O were determined from 1:2.5 suspensions of soil:KCl and soil:H₂O, respectively. Total organic carbon (C_{org}) content, total salt content (%) from electrical conductivity, and soil texture were also determined. The above measurements were done by the Hungarian standard methodology (Buzás 1988, 1993).

DNA extraction and PCR-DGGE

Total soil community DNA was extracted from approximately 0.25 g soil of each sample using PowerSoil DNA Isolation Kit (MO BIO Laboratories Inc., Carlsbad, CA, USA). The V1 region of the bacterial 16S rRNA gene was amplified by two consecutive PCR (Polymerase Chain Reaction), using first the

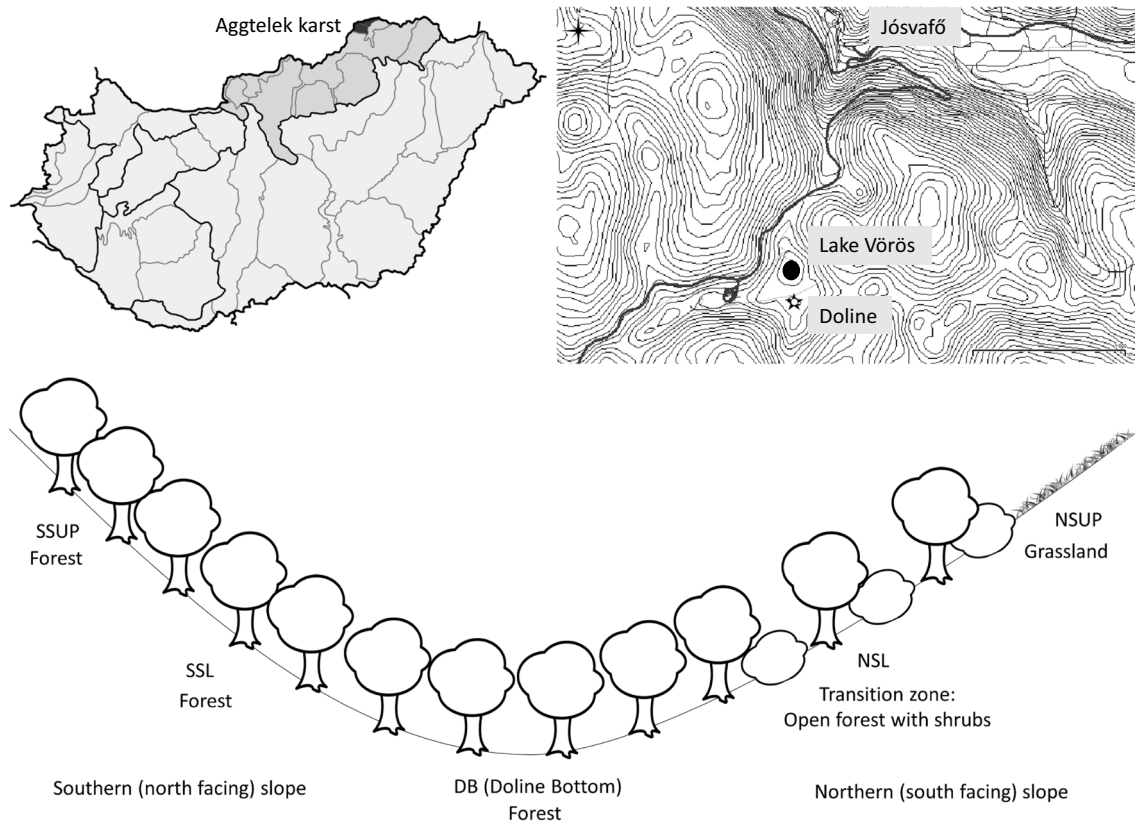


Fig. 1 Location of the sampling area and vegetation cover in the Lake Vörös doline (Aggtelek National Park, Hungary)

primers 27F (Lane 1991) and 1401R (Nübel et al. 1996) and a GC-clamp 27F-GC and 519R (Turner et al. 1999) primers thereafter. The PCR mixtures contained 2 μL of purified genomic DNA, 0.2 mM of each deoxynucleotide, 2 mM MgCl_2 , 1 U LC *Taq* DNA Polymerase (Fermentas, Vilnius, Lithuania), 1 \times PCR Buffer (Fermentas, Vilnius, Lithuania) and 0.325 μM of the primers in a final volume of 50 μL . Temperature profile of both PCRs included an initial denaturation at 95 $^\circ\text{C}$ for 5 min, followed by 32 cycles (denaturation at 94 $^\circ\text{C}$ for 30 s, annealing at 52 $^\circ\text{C}$ for 30 s, extension at 72 $^\circ\text{C}$ for 1 min) and a final extension at 72 $^\circ\text{C}$ for 10 min. The DNA content of the samples was checked by electrophoresis in 1% agarose gel after each step.

DGGE was carried out using an INGENY phorU gel electrophoresis apparatus (Ingeny International BV, Goes, Netherlands), at 60 $^\circ\text{C}$ and a charge of 120 V for 14 h in 7% polyacrylamide gel containing 40 to 60% gradient of denaturants (100% was defined as 40% formamide and 7 M urea). The gel was stained by ethidium bromide for 20 min, then the patterns were visualized by an UV transilluminator. The patterns were digitalised for later analysis by taking a photograph.

Soil multi-SIR profiles

Measurements were done with the MicroResp system (Campbell et al. 2003), using the protocol provided by

the manufacturer (MSC Ltd., Aberdeen, UK). Soil samples were filled into deep-well microplates (one sample/plate) and covered by Parafilm. They were then put into a desiccator together with a wet towel and sodalime for a 5-day preincubation at room temperature. For the measurements, 15 carbon sources (D-glucose, trehalose, D-galactose, L-arabinose, D-fructose, citric acid, malic acid, Na-succinate, L-arginine, L-alanine, L-leucine, L-lysine, L-glutamine, L-glutamic acid and 3,4-dihydroxybenzoic acid) were used in 6 repetitions on each plate, with distilled water as control. After substrate addition, a 5 h incubation period at 25.2 $^\circ\text{C}$ was applied; then, substrate utilization patterns were measured by a microplate reader (Anthos 2010, Biochrom, Cambridge, UK) as absorbance changes of the gel in the detector plates. Absorbance values measured at 570 nm were converted into % CO_2 values using the equation given by the manufacturer (% $\text{CO}_2 = A + B / (1 + D \times A_i)$), where A, B and D are constants and A_i are the individual absorbance values after incubation). Detector plates were calibrated on different CO_2 concentrations using a gas chromatograph (Fisons GC 8000) prior to the experiment to determine the values of the A, B and D constants. % CO_2 values were then converted into CO_2 production rates ($\mu\text{gCO}_2\text{-C} \times \text{g soil}^{-1} \times \text{h}^{-1}$) using the calculation given by the manufacturer.

Statistical analysis

DGGE patterns were analysed using the TotalLab 120 software (TotalLab LTD., UK). Bands were detected automatically after subtracting the background level with the rolling ball method. Bands were grouped automatically based on their position in the lanes. Automatic detection and grouping were then manually checked for errors, e.g. impurities in the gel detected as bands. Similarity matrices were created on the basis of presence or absence of bands, then dendrograms were generated using the UPGMA method. Raw presence-absence data was then exported for further analysis with the R 3.5.0 (R Core Team 2018). Bands that had zero variance along the samples were removed from the data sets, then principal components analysis (PCA) was applied on the centred data matrix, using the `prcomp` function of the `vegan` package (Oksanen et al. 2018). Visualization of the ordinations was done using the `ggbiplot` package (Vu 2011) with custom modifications for visuals. The ordinations from the two seasons were compared based on the first two principal components, determined by the broken stick method. For the comparison of the two seasons, symmetric Procrustes test (Peres-Neto and Jackson 2001) was applied using the `protest` function, with 999 permutations to test the significance of the statistic.

Data from MicroResp were analysed using MS Excel and R. Raw data were processed as described in the MicroResp protocol to determine CO₂ production rates ($\mu\text{g CO}_2\text{-C} \times \text{g soil}^{-1} \times \text{h}^{-1}$) for each well. Respiration data were standardized by the average respiration rate for each plate. PCA was carried out on the data from the two seasons separately; then, Procrustes test was applied similarly as before, to detect significant differences between the two sampling times. For testing the differences between locations, PERMANOVA was applied with different a priori sample groups, using Bray-Curtis index and 9999 permutations (Anderson 2001).

To determine how well the genetic and catabolic fingerprints correlate, the ordinations from DGGE and MicroResp data were also compared by Procrustes tests.

Results

Soil physical and chemical properties

Soils were slightly acidic, with high organic C content (Table 1.). Soil textures varied between silty loam, silty clay loam and silty clay on different parts of the doline. While the samples from the two slopes had similar texture, the doline bottom had much higher proportion (over 71%) of silt and more variability in the pH. It can be because soils from the slopes were redeposited by rainfall erosion, resulting in a mixed sediment at the doline bottom which is a common phenomenon (Kiss 2012).

DGGE profiles of bacterial communities

Dendrograms based on the DGGE profiles were similar in the two sampling times but some differences occurred (Fig. 2a and b). From the DB1 sample in late spring, only low amounts of DNA could be extracted thus it was placed in outsider position on the dendrogram. The DB samples clustered with the northern slope of the doline (NSUP and NSL) in the early spring, and with the southern slope (SSUP and SSL) in the late spring. Sites with different vegetation cover—forest, open forest, and grassland—had clearly distinct bacterial communities in both samplings.

The PCA of the data confirmed that the microbial community profiles were different in the five parts of doline, and showed that doline bottom has higher variance, probably because of the slope sediment nature of this area. Temporal differences can also be observed in the relative position of the samples (Online Resource 6 a and b). However, Procrustes test (Fig. 3) indicated that despite the different clustering of the doline bottom samples, the DGGE profiles of the microbial communities were quite similar in the two sampling times ($r = 0.855$, $p = 0.001$).

Multi-SIR profiles

The average respiration rates of the samples were similar in the two sampling times but showed a high variability between parallel samples. The PCA could not reveal differences among the substrate usage patterns of the microbial communities in the late spring but it could separate some of the sample groups in the early spring (Fig. 4a and b). Procrustes test showed that the catabolic fingerprints were very different in the two sampling times ($r^2 = 0.272$, $p = 0.581$). The PCA of the combined dataset from the two sampling times (Online Resource 4) showed that the main difference was along PC 1, which had strong correlation ($|r| > 0.6$) with three of the organic substrates (malic acid, lysine and leucine), among which malic acid had the highest loading value (0.94). Early spring samples had higher respiration rates for malic acid ($1.32 \pm 0.52 \mu\text{g CO}_2\text{-C} \times \text{g soil}^{-1} \times \text{h}^{-1}$ for late spring, vs. $5.5 \pm 1.33 \mu\text{g CO}_2\text{-C} \times \text{g soil}^{-1} \times \text{h}^{-1}$ for early spring).

Although not clearly separated by PCA, further analysis of the samples by PERMANOVA revealed that in the early spring, samples from different parts of the doline had distinct multi-SIR profiles. This difference was the most pronounced ($p = 0.0004$, pseudo- $F = 3.96$, all pairwise p -values below 0.05) when the samples were classified into three groups by their geographical location as northern slope, doline bottom, and southern slope. In the late spring, however, no statistically significant difference was found between samples.

Comparisons of MicroResp and DGGE fingerprints differed in the two sampling times. While in the early spring period there was a moderate Procrustean correlation between the two fingerprints ($r^2 = 0.605$, $p = 0.004$), there was no significant correlation ($r^2 = 0.187$, $p = 0.848$) between the two fingerprints in the late spring period.

Table 1 Physical and chemical properties of the soil samples from the Lake Vörös doline (Aggtelek National Park, Hungary). SS, southern slope; NS, northern slope, W% is the gravimetric water content in percentage of total soil weight

Sample	Location	Vegetation	pH _{H2O}	pH _{KCl}	Organic C content (m/m%)	total salt content (m/m%)	W% (late spring)	W% (early spring)	Texture
SSUP1	SS, upper part	Closed canopy forest	6.33	5.53	3.61	0.03	30.30	35.69	Silty clay loam
SSUP2	SS, upper part	Closed canopy forest	6.46	5.90	5.39	0.04	33.62	34.35	Silty clay loam
SSUP3	SS, upper part	Closed canopy forest	5.80	4.98	3.85	< 0.02	30.16	34.16	Silty clay loam
SSL1	SS, lower part	Closed canopy forest	5.53	4.46	3.66	0.04	28.36	34.88	Silty clay loam
SSL2	SS, lower part	Closed canopy forest	5.27	4.20	2.89	< 0.02	25.16	35.31	Silty clay loam
SSL3	SS, lower part	Closed canopy forest	5.59	4.65	3.44	0.04	29.90	33.37	Silty clay loam
DB1	Doline bottom	Closed canopy forest	4.31	3.38	3.55	< 0.02	28.01	29.83	Silt loam
DB2	Doline bottom	Closed canopy forest	5.79	4.99	2.76	< 0.02	27.36	31.84	Silt loam
DB3	Doline bottom	Closed canopy forest	6.08	5.20	3.21	0.04	28.13	31.65	Silt loam
NSL1	NS, lower part	Open canopy forest	6.61	5.79	3.75	0.06	28.83	25.56	Silty clay loam
NSL2	NS, lower part	Open canopy forest	6.00	5.04	3.06	< 0.02	28.48	28.13	Silty clay loam
NSL3	NS, lower part	Open canopy forest	6.12	5.18	3.11	0.04	28.14	29.79	Silty clay loam
NSUP1	NS, upper part	Grassland	5.80	4.90	3.31	< 0.02	27.64	25.72	Silty clay
NSUP2	NS, upper part	Grassland	5.85	4.94	2.91	< 0.02	27.02	19.6	Silty clay
NSUP3	NS, upper part	Grassland	6.01	4.97	2.69	< 0.02	25.60	24.88	Silty clay

Discussion

Soil microbial density and diversity are known to be influenced by many factors. It was shown recently that in a karstic ecosystem, soil pH is the main parameter influencing the microbial communities (Yun et al. 2016). Although the method used in the present study is not suitable for detailed and quantitative analysis of community structure, and hence a direct comparison with the results of Yun et al. (2016) is not possible, DGGE is an excellent tool for comparative analysis of DGGE profiles (Nielsen et al. 2013), and is often used to indicate changes in the bacterial community structure after soil treatment or different land uses (e.g. Stagnari et al. 2014; Orlewska et al. 2018a, b). In our study, pH was not different significantly in different parts of doline—slightly acidic

through the whole transect—still, there were significant differences in the genetic fingerprints of bacterial communities.

It is also known that vegetation can have a strong influence on soil microbial communities (Hooper et al. 2000; Haichar et al. 2014; Khlifa et al. 2017). Our results are similar to those of Li et al. (2014), who found in that different soil microbial communities developed at different successional stages of a karstic. In our study, areas with different vegetation type had clearly different bacterial communities. Plant communities can also affect soil microbes through changes in microclimatic relations. It was previously that areas covered by forests had much higher bacterial counts than those covered by grassland in karst dolines, because of more stable water conditions (Kevei and Zámbo 1985). Zhang et al. (2006) also found that in karstic areas, DGGE fingerprints, basal respiration and SIR rates better reflected the changes in plant coverage and

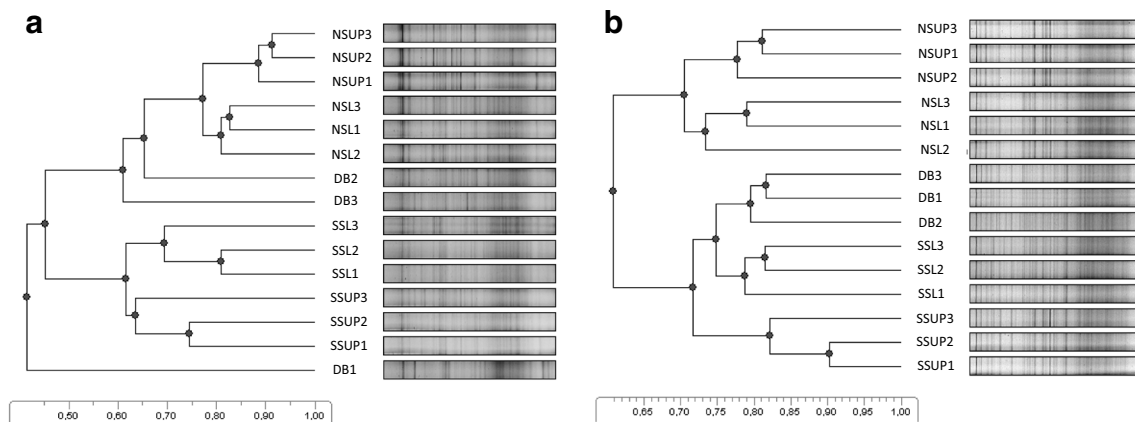
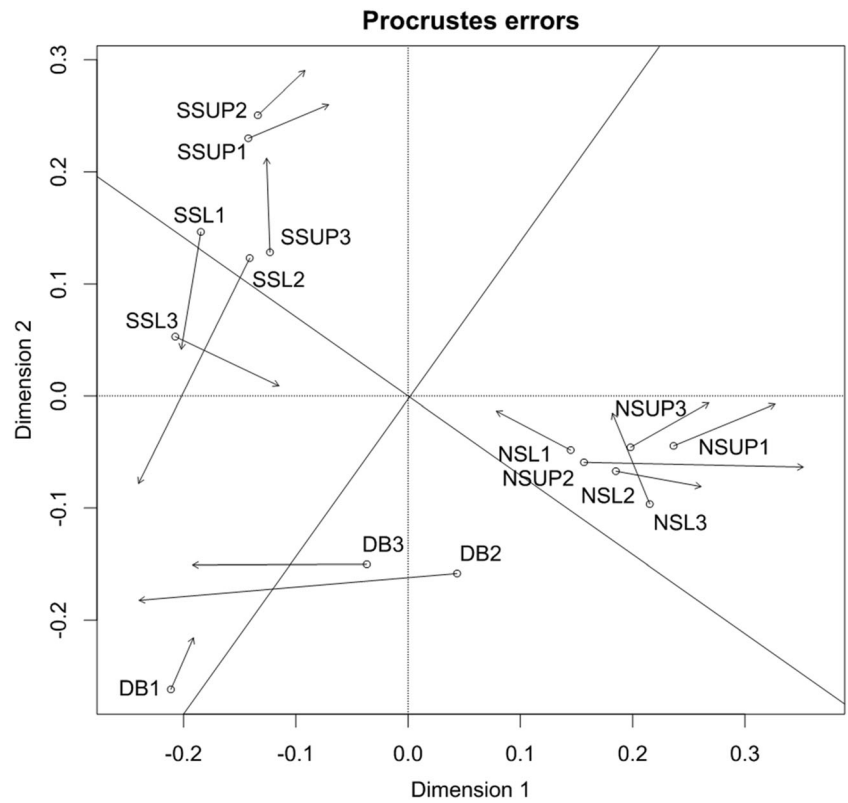


Fig. 2 UPGMA dendrograms created from the DGGE patterns of soil bacterial communities in the late spring (a) and early spring (b) samples. Scales show the similarity of the samples between a range of 0–1

Fig. 3 Procrustes analysis of the ordinations of DGGE data from the two sampling times. $r = 0.855$, $m^2 = 0.269$, $p = 0.001$. Arrows are directed from the early to the late spring positions



vegetation type than the soil biochemical properties which is in good agreement with our results.

In the case of catabolic activities, however, we found that the relationship between vegetation and multi-SIR profiles was much weaker. In the late spring period, we could not indicate any differences in the substrate usage of microbial communities. In the early spring period, catabolic fingerprints were different on the two slopes and the bottom of the doline,

but unlike in the case of DGGE profiles, no further distinction were possible e.g. between shrubs and grassland vegetation. The northern slope was slightly drier in this season; therefore, it is possible that the slightly different soil moisture played a role in the better separation of the samples, because it can have an effect on microbial communities (Kevei and Zámbo 1985).

There were, however, significant differences between the two sampling times, especially in the ability of microbial

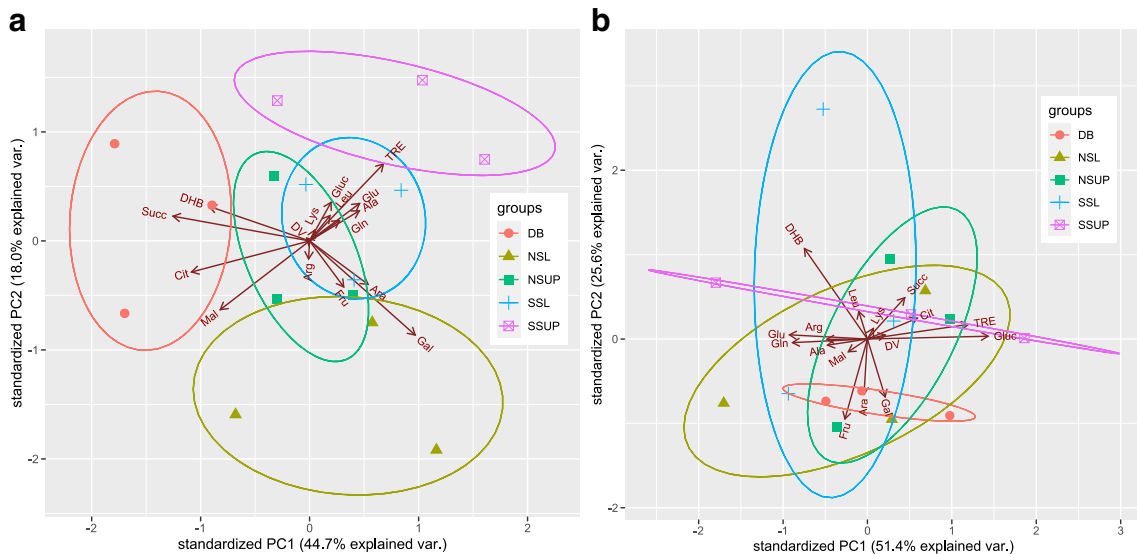


Fig. 4 Results of principal components analysis of MicroResp fingerprints from early (a) and late (b) spring period. Ellipses represent the 95% confidence intervals of the groups. Arrows of the biplot

correspond to the contribution of the original substrates to the variance represented by the principal components

communities to utilise malic acid. It is already known that microbial communities are affected by root exudates (Haichar et al. 2014), which can possibly result in changes in catabolic fingerprints. Also, plant roots are known to actively exudate malate—along with citrate—to increase phosphate availability in the rhizosphere (Jones 1998), and also to recruit beneficial bacteria from the soil by malic acid exudation (Berendsen et al. 2012). Although drawing conclusions regarding root exudates is beyond the scope of this study, it is possible that the observed differences of catabolic fingerprints are a result of vegetation changes during the seasons. Nevertheless, seasonality clearly has a great effect on soil multi-SIR profiles. This effect is surprisingly rarely addressed in the literature, even in areas other than karst research, but it should definitely be taken into consideration in future studies.

We found that the correlation between genetic and catabolic fingerprints was weak in the early spring, and not significant in the late spring. This, together with the high number of bands in DGGE fingerprints, suggests that karstic soils can have very high microbial diversity and that it can result in significant redundancy of soil functional—in this case, catabolic—diversity (Wertz et al. 2006; Nielsen et al. 2011). Because of this, changes in bacterial community structure might be masked by functional redundancy which might limit the use of MicroResp method in itself for soil monitoring. Our results are in accordance with the study of Zhu et al. (2012), who examined a karstic area with five different vegetation succession stages, and found that DGGE was more sensitive than catabolic fingerprinting.

Conclusions

Our study showed that vegetation differences can have a significant effect on the genetic fingerprint of soil microbial communities in a karst doline. However, these differences are not necessarily reflected in the catabolic activity and diversity because of the high functional redundancy of these soils. Our results also confirmed that seasonality can have a significant effect on the multi-SIR profiles of microbial communities. These effects can have a great influence on the results of soil monitoring and assessment of soil functions and should be taken into consideration in further studies.

Acknowledgements We thank Klaudia Kiss for her help in sampling and providing information about soil types of the field.

Code availability Not applicable.

Funding Open access funding provided by ELKH Centre for Agricultural Research. This research was supported by the Hungarian Scientific Research Fund (OTKA, Grants No. T79135).

Data availability Not applicable.

Compliance with ethical standards

Conflict of interest The authors declare no conflict of interest.

Permissions Permission for conducting research in the area of Aggtelek National Park was issued by the Northern Hungarian Inspectorate for Environmental Protection, Natural Protection and Water (15590-10/2010, 2010.09.27.)

Ethics approval Not applicable.

Consent to participate Not applicable.

Consent for publication Not applicable.

Open Access This article is licensed under a Creative Commons Attribution 4.0 International License, which permits use, sharing, adaptation, distribution and reproduction in any medium or format, as long as you give appropriate credit to the original author(s) and the source, provide a link to the Creative Commons licence, and indicate if changes were made. The images or other third party material in this article are included in the article's Creative Commons licence, unless indicated otherwise in a credit line to the material. If material is not included in the article's Creative Commons licence and your intended use is not permitted by statutory regulation or exceeds the permitted use, you will need to obtain permission directly from the copyright holder. To view a copy of this licence, visit <http://creativecommons.org/licenses/by/4.0/>.

References

- Anderson MJ (2001) A new method for non-parametric multivariate analysis of variance. *Austral Ecol* 26:32–46
- Bárány I, Mezösi G (1977) Interrelations of some factors of karst corrosion in a Bükk doline. *Acta Univ Szeged Acta Geogr* 17:133–140
- Barton HA, Northup DE (2007) Geomicrobiology in cave environments: past, current and future perspectives. *J Cave Karst Stud* 69:163–178
- Baskar S, Routh J, Baskar R, Kumar A, Miettinen H, Itävaara M (2016) Evidences for microbial precipitation of calcite in speleothems from Krem Syndai in Jaintia Hills, Meghalaya, India. *Geomicrobiol J* 33: 906–933. <https://doi.org/10.1080/01490451.2015.1127447>
- Bátori Z, Csiky J, Farkas T, Vojtkó A, Erdős L, Kovács D, Wirth T, Körmöczi L, Vojtkó A (2014) The conservation value of karst dolines for vascular plants in woodland habitats of Hungary: refugia and climate change. *Int J Speleol* 43:15–26. <https://doi.org/10.5038/1827-806X.43.1.2>
- Berendsen RL, Pieterse CMJ, Bakker PAHM (2012) The rhizosphere microbiome and plant health. *Trends Plant Sci* 17:478–486. <https://doi.org/10.1016/j.tplants.2012.04.001>
- Berg G, Smalla K (2009) Plant species and soil type cooperatively shape the structure and function of microbial communities in the rhizosphere. *FEMS Microbiol Ecol* 68:1–13. <https://doi.org/10.1111/j.1574-6941.2009.00654.x>
- Buzás I (1988) Manual for soil and agrochemical analyses 2: Physicochemical and chemical analysis of soils. (in Hungarian). Mezőgazda Kiadó, Budapest
- Buzás I (1993) Manual for soil and agrochemical analyses 1: physical, water management and mineral analysis of soils. (in Hungarian). INDA 4321 Kiadó, Budapest
- Campbell CD, Chapman SJ, Cameron CM, Davidson MS, Potts JM (2003) A rapid microtiter plate method to measure carbon dioxide evolved from carbon substrate amendments so as to determine the physiological profiles of soil microbial communities by using whole

- soil. *Appl Environ Microbiol* 69:3593–3599. <https://doi.org/10.1128/AEM.69.6.3593>
- Creamer RE, Stone D, Berry P, Kuiper I (2016) Measuring respiration profiles of soil microbial communities across Europe using MicroResp™ method. *Appl Soil Ecol* 97:36–43. <https://doi.org/10.1016/j.apsoil.2015.08.004>
- Darabos G (1999) The role of soil microorganisms in karst corrosion. *Acta Univ Szeged Acta Geogr TOMUS XXXVII*:54–59
- Ford D, Williams P (2007) *Karst hydrogeology and geomorphology*. Wiley, West Sussex
- Gutiérrez F, Parise M, De Waele J, Jourde H (2014) A review on natural and human-induced geohazards and impacts in karst. *Earth-Sci Rev* 138:61–88. <https://doi.org/10.1016/j.earscirev.2014.08.002>
- Haichar FZ e, Santaella C, Heulin T, Achouak W (2014) Root exudates mediated interactions belowground. *Soil Biol Biochem* 77:69–80. <https://doi.org/10.1016/j.soilbio.2014.06.017>
- Hooper DU, Bignell DE, Brown VK et al (2000) Interactions between above-ground and belowground biodiversity in terrestrial ecosystems: patterns, mechanisms, and feedbacks. *Bioscience* 50:1049–1061
- Jones DL (1998) Organic acids in the rhizosphere—a critical review. *Plant Soil* 205:25–44. <https://doi.org/10.1023/A:1004356007312>
- Kevei I, Zámbo L (1985) Study of the relationship between bacteria activity in karstic soils and corrosion. *Ann Univ Sci Budapestinensis Rolando Eötvös Nomin Sect Geogr* 20–21:325–334
- Khlifa R, Paquette A, Messier C, Reich PB, Munson AD (2017) Do temperate tree species diversity and identity influence soil microbial community function and composition? *Ecol Evol* 7:7965–7974. <https://doi.org/10.1002/ece3.3313>
- Kiss K (2012) Analysis of red clay soils of the Aggtelek karst (in the catchment area of Béke cave). *Karstdevelopment* 17:89–103
- Knáb M, Szili-Kovács T, Kiss K, Palatinszky M, Márialigeti K, Móga J, Borsodi A (2012) Comparison of soil microbial communities from two distinct karst areas in Hungary. *Acta Microbiol Immunol Hung* 59:91–105. <https://doi.org/10.1556/AMicr.59.2012.1.10>
- Lane DJ (1991) 16S/23S rRNA Sequencing. In: *Nucleic acid techniques in bacterial systematics*. Wiley, Chichester, pp 115–175
- Li L, Wang D, Liu X, Zhang B, Liu Y, Xie T, du Y, Pan G (2014) Soil organic carbon fractions and microbial community and functions under changes in vegetation: a case of vegetation succession in karst forest. *Environ Earth Sci* 71:3727–3735. <https://doi.org/10.1007/s12665-013-2767-3>
- Lian B, Chen Y, Zhu L, Yang R (2008) Effect of microbial weathering on carbonate rocks. *Earth Sci Front* 15:90–99. [https://doi.org/10.1016/S1872-5791\(09\)60009-9](https://doi.org/10.1016/S1872-5791(09)60009-9)
- Móga J, Kiss K, Szabó M et al (2013) Hazards and landscape changes (degradations) on Hungarian karst mountains due to natural and human effects. *J Mt Sci* 10:16–28. <https://doi.org/10.1007/s11629-013-2400-7>
- Mulec J, Krištůfek V, Chroňáková A (2012) Monitoring of microbial indicator groups in caves through the use of RIDA@COUNT kits. *Acta Carsol* 41. <https://doi.org/10.3986/ac.v41i2-3.565>
- Nazaries L, Tottey W, Robinson L, Khachane A, al-Soud WA, Sørensen S, Singh BK (2015) Shifts in the microbial community structure explain the response of soil respiration to land-use change but not to climate warming. *Soil Biol Biochem* 89:123–134. <https://doi.org/10.1016/j.soilbio.2015.06.027>
- Nielsen UN, Ayres E, Wall DH, Bardgett RD (2011) Soil biodiversity and carbon cycling: a review and synthesis of studies examining diversity-function relationships. *Eur J Soil Sci* 62:105–116. <https://doi.org/10.1111/j.1365-2389.2010.01314.x>
- Nielsen JW, Jordan FL, Maier RM (2013) Analysis of artifacts suggests DGGE should not be used for quantitative diversity analysis. *J Microbiol Methods* 92:256–263. <https://doi.org/10.1016/j.mimet.2012.12.021>
- Nübel U, Engelen B, Felske A, Snaidr J, Wieshuber A, Amann RI, Ludwig W, Backhaus H (1996) Sequence heterogeneities of genes encoding 16S rRNAs in *Paenibacillus polymyxa* detected by temperature gradient gel electrophoresis. *J Bacteriol* 178:5636–5643
- Oksanen J, Blanchet FG, Friendly M, et al (2018) *Vegan: community ecology package*. Version 2.5-2 URL <https://cran.r-project.org/web/packages/vegan/index.html>. Accessed 17 May 2018
- Orlewska K, Piotrowska-Seget Z, Cycoń M (2018a) Use of the PCR-DGGE method for the analysis of the bacterial community structure in soil treated with the cephalosporin antibiotic cefuroxime and/or inoculated with a multidrug-resistant *Pseudomonas putida* strain MC1. *Front Microbiol* 9:1384. <https://doi.org/10.3389/fmicb.2018.01387>
- Orlewska K, Piotrowska-Seget Z, Bratosiewicz-Wąsik J, Cycoń M (2018b) Characterization of bacterial diversity in soil contaminated with the macrolide antibiotic erythromycin and/or inoculated with a multidrug-resistant *Raoultella* sp. strain using the PCR-DGGE approach. *Appl Soil Ecol* 126:57–64. <https://doi.org/10.1016/j.apsoil.2018.02.019>
- Peres-Neto PR, Jackson DA (2001) How well do multivariate data sets match? The advantages of a procrustean superimposition approach over the Mantel test. *Oecologia* 129:169–178. <https://doi.org/10.1007/s004420100720>
- Phillips JD (2016) Biogeomorphology and contingent ecosystem engineering in karst landscapes. *Prog Phys Geogr* 40:503–526. <https://doi.org/10.1177/0309133315624641>
- R Core Team (2018) *A language and environment for statistical computing*. Version 3.5.0. R Foundation for Statistical Computing, Vienna URL <https://www.R-project.org/>
- Stagnari F, Perpetuini G, Tofala R, Campanelli G, Leteo F, Della Vella U, Schirone M, Suzzi G, Pisante M (2014) Long-term impact of farm management and crops on soil microorganisms assessed by combined DGGE and PLFA analyses. *Front Microbiol* 5:644. <https://doi.org/10.3389/fmicb.2014.00644>
- Turner S, Pryer KM, Miao VPW, Palmer JD (1999) Investigating deep phylogenetic relationships among cyanobacteria and plastids by small subunit rRNA sequence analysis. *J Eukaryot Microbiol* 46:327–338. <https://doi.org/10.1111/j.1550-7408.1999.tb04612.x>
- Vu VQ (2011) ggbiplot: a ggplot2 based biplot. Version 0.55 URL <http://github.com/vqv/ggbiplot>
- Wakelin S, Lombi E, Donner E, MacDonald L, Black A, O’Callaghan M (2013) Application of MicroResp™ for soil ecotoxicology. *Environ Pollut* 179:177–184. <https://doi.org/10.1016/j.envpol.2013.04.010>
- Wertz S, Degrange V, Prosser JI, Poly F, Commeaux C, Freitag T, Guillaumaud N, Roux XL (2006) Maintenance of soil functioning following erosion of microbial diversity. *Environ Microbiol* 8:2162–2169. <https://doi.org/10.1111/j.1462-2920.2006.01098.x>
- Williams PW (2008) The role of the epikarst in karst and cave hydrogeology: a review. *Int J Speleol* 37:1–10
- Yun Y, Wang H, Man B, Xiang X, Zhou J, Qiu X, Duan Y, Engel AS (2016) The relationship between pH and bacterial communities in a single karst ecosystem and its implication for soil acidification. *Front Microbiol* 7:1955. <https://doi.org/10.3389/fmicb.2016.01955>
- Zhang P, Li L, Pan G, Ren J (2006) Soil quality changes in land degradation as indicated by soil chemical, biochemical and microbiological properties in a karst area of southwest Guizhou, China. *Environ Geol* 51:609–619. <https://doi.org/10.1007/s00254-006-0356-4>
- Zhu H, He X, Wang K, Su Y, Wu J (2012) Interactions of vegetation succession, soil bio-chemical properties and microbial communities in a karst ecosystem. *Eur J Soil Biol* 51:1–7. <https://doi.org/10.1016/j.ejsobi.2012.03.003>

Publisher’s note Springer Nature remains neutral with regard to jurisdictional claims in published maps and institutional affiliations.