




 Cite this: *RSC Adv.*, 2022, 12, 23829

High thermoelectric performance in metal phosphides MP_2 ($M = Co, Rh$ and Ir): a theoretical prediction from first-principles calculations†

 Chung-Jin Kang, Un-Gi Jong, * Yun-Hyok Kye and Chol-Jun Yu *

Although metal phosphides have good electronic properties and high stabilities, they have been overlooked in general as thermoelectrics based on expectation of high thermal conductivity. Here we propose the metal phosphides MP_2 ($M = Co, Rh$ and Ir) as promising thermoelectrics through first-principles calculations of their thermoelectric properties. By using lattice dynamics calculations within unified theory of thermal transport in crystal and glass, we obtain the lattice thermal conductivities κ_l of MP_2 as 0.63, 1.21 and 1.81 $W\ m^{-1}\ K$ at 700 K for $M = Co, Rh$ and Ir , respectively. Our calculations for crystalline structure, phonon dispersion, Grüneisen parameters and cumulative κ_l reveal that such low κ_l originates from strong rattling vibrations of M atoms and lattice anharmonicity, which significantly suppress heat-carrying acoustic phonon modes coupled with low-lying optical modes. Using mBJ exchange–correlation functional, we further calculate the electronic structures and transport properties, which are in good agreement with available experimental data, evaluating the relaxation time of charge carrier within deformation potential theory. We predict ultrahigh thermopower factors as 10.2, 7.1 and 6.4 $mW\ m^{-1}\ K^2$ at 700 K for $M = Co, Rh$ and Ir , being superior to the conventional thermoelectrics $GeTe$. Finally, we estimate their thermoelectric performance by computing figure of merit ZT , finding that upon n -type doping ZT can reach ~ 1.7 at 700 K specially for CoP_2 . We believe that our work offers a novel materials platform to search for high-performance thermoelectrics using metal phosphides.

 Received 6th July 2022
 Accepted 15th August 2022

DOI: 10.1039/d2ra04175h

rsc.li/rsc-advances

1 Introduction

Currently, more than 65% of global energy production is lost as waste heat, being stored in large volumes of warm gases, liquids and solids.¹ Although no commercially viable technique has yet developed to effectively utilize this waste heat in low energy density, thermoelectric technology has been proved to play an important role in direct conversion of heat into electricity.^{2,3} Like all other heat engines, thermoelectric generators in this technology operate on temperature gradient, $\Delta T = T_{hot} - T_{cold}$, and thus the energy conversion efficiency of generator can be enhanced by increasing ΔT . Also, the thermoelectric conversion

occurs on thermoelectric materials (TEMs), for which a figure of merit is defined as $ZT = S^2\sigma T/\kappa_{tot}$ with the Seebeck coefficient S , electrical conductivity σ , and total thermal conductivity κ_{tot} as a sum of electronic (κ_e) and lattice vibrational contributions (κ_l).⁴ Given the operational environment of ΔT , therefore, the overall efficiency can be enhanced by finding or designing TEMs with high ZT values through maximizing both S and σ while minimizing κ_{tot} . However, these physical properties is generally interdependent in materials, making it challenging to find innovative TEMs with increasing ZT values.⁵

Since the first discovery of the Seebeck phenomena in 1821 and the ZT equation in 1911, it had taken several decades to develop the first thermoelectric generator utilizing TEMs.⁶ The most widely used conventional TEMs include group IV and V chalcogenides^{7–10} (e.g., $PbTe$, Bi_2Te_3 , Sb_2Te_3 , $SnSe$), complex skutterudites^{11,12} and clathrates,^{13–15} and half-Heusler alloys.^{16,17} With these TEMs, the ZT value has been considerably increased by advancing materials and synthesis method to increase the thermopower factor $S^2\sigma$ (ref. 18–21) and suppress the lattice thermal conductivity κ_l .^{22–26} For instance, the very high ZT value of 2.2–2.6 at 920 K was achieved in $PbTe$ – $SrTe$ binary alloy composites²⁷ and $SnSe$ -based solid solutions^{28,29} via advanced multiple strategies of band engineering, nano-structuring, hierarchical architecturing and non-equilibrium processing. In particular, Zhou *et al.*³⁰ recently reported an unusually high

Chair of Computational Materials Design (CMD), Faculty of Materials Science, Kim Il Sung University, Pyongyang, PO Box 76, Democratic People's Republic of Korea.
 E-mail: ug.jong@ryongnamsan.edu.kp; cj.yu@ryongnamsan.edu.kp

† Electronic supplementary information (ESI) available: Figures for comparison of phonon dispersions curves calculated using $2 \times 2 \times 2$ and $3 \times 3 \times 3$ supercells, temperature-dependent lattice thermal conductivity (κ_l) at different directions, total energy convergence tests according to the energy cutoff and k -point mesh for CoP_2 , convergence tests of κ_l with respect to q -point mesh, heat capacity as a function of temperature, deformation potential, temperature-dependent charge carrier lifetime, figure of merit ZT calculated with different k -point meshes and exchange-correlation functionals, and atom-projected partial DOS calculated by HSE06 and LDA + U methods for MP_2 . See <https://doi.org/10.1039/d2ra04175h>



ZT value approaching ~ 3.1 at 783 K, which is the highest record until now, by developing the Na-doped polycrystalline SnSe compounds. To obtain this record, they purified the reactants carefully and removed tin oxide residue from the surface of these compounds, thereby finding the ultralow κ_1 of $0.07 \text{ W m}^{-1} \text{ K}$ together with the high thermopower factor $S^2\sigma$ of $1.2 \text{ mW m}^{-1} \text{ K}^2$.

In recent years, unconventional TEMs have been developed and attracted a great deal of research interest. These include halide perovskites,^{31,32} carbon-based semiconductors,³³ metal complex oxides^{34,35} and metal phosphides,^{36,37} which have several advantages such as high abundance and non-toxicity of the constituent elements, and ease of manufacturing process. Among these TEMs, the most promising material would be a copper phosphide CuP_2 , which combines two desirable properties; the inherent low lattice thermal conductivity and the high thermopower factor through the favorable electronic structure. In fact, Qi *et al.*³⁶ demonstrated a much lower κ_1 of $0.6 \text{ W m}^{-1} \text{ K}$ at 300 K in polycrystalline CuP_2 than the value of $\sim 1.1 \text{ W m}^{-1} \text{ K}$ for the prototypical TEM SnSe.²⁹ Moreover, Odile *et al.*³⁸ observed a superior Seebeck coefficient of $692 \mu \text{ V K}^{-1}$ to the value of $\sim 190 \mu \text{ V K}^{-1}$ for SnSe at room temperature. In the meantime, first-principles calculations revealed that the ZT value of CuP_2 can reach over 1.3 at 700 K by optimizing the hole concentration, highlighting a certain possibility of applying metal phosphides to thermoelectric devices.³⁷

In spite of some experimental and theoretical studies on CuP_2 , there is a lack of comprehensive insight into thermoelectric performance of metal phosphides. Furthermore, it is expected that replacing Cu atom with other metal atoms in CuP_2 can enhance the thermoelectric performance. In this work, we perform first-principles calculation to investigate the lattice dynamics, electrical and thermal transport properties of metal phosphides MP_2 ($M = \text{Co}, \text{Rh}$ and Ir), the analogues of CuP_2 , which will be used to evaluate their thermoelectric performances. We clarify the underlying fundamental mechanism of enhanced thermoelectric performance so as to design novel TEMs based on metal phosphides.

2 Computational methods

The first-principles calculations were carried out using the projector augmented wave (PAW) potential and plane wave method as implemented in the Vienna *Ab initio* Simulation Package (VASP).^{39,40} In the PAW potentials for describing the electrostatic interaction between the ionic cores and valence electrons,^{41,42} the valence electron configurations are $\text{Co-}3\text{d}^84\text{s}^1$, $\text{Rh-}4\text{d}^85\text{s}^1$, $\text{Ir-}5\text{d}^86\text{s}^1$, and $\text{P-}3\text{s}^23\text{p}^3$. For the exchange–correlation (XC) interaction among the valence electrons, the Perdew–Burke–Ernzerhof (PBE) functional within the generalized gradient approximation (GGA) was employed.⁴³ Through explicit convergence test, we set a kinetic energy cutoff for plane wave basis sets to expand Kohn–Sham orbitals as 600 eV and a Γ -centered k -point mesh for the Brillouin zones (BZ) integration to obtain the electronic density as $(8 \times 8 \times 8)$ for the unit cell (12 atoms) (see Fig. S1 for convergence test in the ESI†). The crystalline structures were fully optimized both for lattice

constants and atomic positions until the magnitude of atomic forces converged to below $10^{-3} \text{ eV \AA}^{-1}$ with a total energy convergence threshold of 10^{-8} eV . For the lattice dynamics calculations, we built $2 \times 2 \times 2$ supercells (96 atoms), and reduced the cutoff energy as 400 eV and the k -point mesh as $(4 \times 4 \times 4)$, applying the same convergence thresholds. For reliable electronic properties, such as band structure, density of states (DOS) and electronic transport properties, we applied the hybrid XC functional with the modified Becke–Johnson (mBJ) exchange⁴⁴ plus the PBE correlation. This mBJ–PBE functional has been proved to provide well agreed results with the experiment for CuP_2 in our previous work,³⁷ with much less computational efforts compared with HSE06 hybrid functional and explicit many-body GW method. Since in many thermoelectric materials, spin–orbit coupling (SOC) affects the electronic structure and electrical transport, we calculated the electronic band structures and thermopower factors without and with SOC effect.

The electronic transport properties, including the Seebeck coefficient (S), electrical conductivity (σ) and electron thermal conductivity (κ_e), were evaluated by solving the linearized Boltzmann transport equation (BTE) within the constant relaxation time approximation (CRTA). We implemented the BoltzTrap2 code,⁴⁵ which uses only k -dependent quasi-particle energies as input, being approximated by the KS eigenvalues in an efficient procedure. To obtain accurate transport coefficients, therefore, we utilized a denser k -point mesh of $(24 \times 24 \times 24)$ in the first BZ for the band structure calculations. In this work, we assessed the relaxation time of charge carrier by use of the deformation potential theory (DPT), which is a key quantity for determining the electronic transport properties. Within this approach, the relaxation time τ is calculated as a function of temperature by considering the electron–phonon interactions mainly contributed from the acoustic phonon modes with the following formula,^{37,46}

$$\tau = \frac{2\sqrt{2}\pi\hbar^4 C}{3D^2(m^*k_{\text{B}}T)^{3/2}} \quad (1)$$

where C , D , m^* , T , \hbar and k_{B} are the elastic constant, deformation potential, effective mass of charge carrier, absolute temperature, reduced Planck constant and Boltzmann constant, respectively. The effective mass defined as $m^* = \hbar(\partial^2 E/\partial k^2)^{-1}$ was calculated by using the refined band structures within the single band approximation. The elastic constant C was obtained using the density functional perturbation theory (DFPT).⁴⁷ The deformation potential defined as $D = \Delta E/(\Delta a/a_0)$ was evaluated by calculating the band edge shifts ΔE induced by a small change in the lattice constant $\Delta a/a_0$.

The harmonic (2nd-order) and cubic (3rd-order) interatomic force constants (IFCs) were calculated by performing the compressive sensing lattice dynamics (CSLD),⁴⁸ as implemented in the ALAMODE code.⁴⁹ In these calculations, the VASP code was used as force calculator to obtain the IFCs with finite displacement method. The $2 \times 2 \times 2$ supercells were used to extract the IFCs. For the harmonic and cubic IFCs, we prepared 15 and 20 different configurations respectively, displaced all the

atoms randomly by 0.01 and 0.06 Å from their equilibrium positions, and then computed the atomic forces for each displaced configuration by performing the precise DFT calculations. With the atomic displacement and force data, we extracted the harmonic and cubic IFCs with the CSLD approach, considering all the possible harmonic terms while setting the cut-off radius as 5.1 Å for calculating the cubic IFCs. Using these IFCs, the atomic forces were reproduced within the relative errors less than 4% compared to the DFT-calculated ones. With the harmonic and cubic IFCs, the harmonic phonon dispersions and the lattice transport properties such as phonon group velocity (v_g), phonon lifetime (τ_{3rd}) and lattice thermal conductivity (κ_l) were calculated by solving the phonon BTE within CRTA. Meanwhile, as Simoncelli *et al.*⁵⁰ lately developed a unified theory of thermal transport in crystals and glasses, the κ_l was determined by using both the diagonal and off-diagonal elements of phonon velocity operator. When accounting for the diagonal (off-diagonal) contributions to κ_l only, the unified theory reduced to the Peierls's linearized BTE⁵¹ (the Allen-Feldman formulation⁵²) in the semi-classical limit of a simple crystal (the case of a harmonic glass). In this work, we estimated both the diagonal (κ_{lP}) and off-diagonal (κ_{lC}) contributions to the lattice thermal conductivity ($\kappa_l = \kappa_{lP} + \kappa_{lC}$) as implemented in the ALAMODE code.

3 Results and discussion

3.1 Crystalline structure

Before proceeding to study on the electron and lattice transport properties, we first determined the optimized lattice parameters of metal phosphides MP_2 ($M = Co, Rh$ and Ir). According to the previous experiments,^{53,54} MP_2 crystallizes in the monoclinic crystalline phase with a space group of $P2_1/c$. Fig. 1 depicts the unit cell of the monoclinic MP_2 crystal optimized by using the PBE functional, where metal atoms reside in the corner-sharing

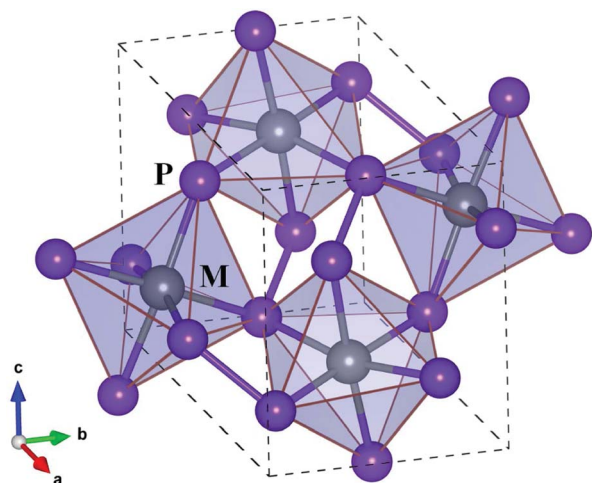


Fig. 1 Polyhedral view of crystalline structure of monoclinic MP_2 ($M = Co, Rh, Ir$) with a space group of $P2_1/c$. Dashed lines indicate the unit cell. Black- and blue-coloured balls represent M and P atoms, respectively.

octahedra formed by phosphorus atoms. As listed in Table 1, the PBE-calculated lattice constants (angles) were slightly overestimated (underestimated) compared to the previous experiments^{53,54} with relative errors less than 0.9%. On the other hand, the calculated lattice parameters show a distinct variation trend with respect to the choice of metal atom, such that the lattice constant (angle) systematically increases (decreases) as the atomic radius of the metal atom increases, agreeing well with the previous experiments.

Regarding the crystallographic structure, the local environment around the metal atoms is significantly different in MP_2 under study compared to CuP_2 , although both of them are in the monoclinic phase with space groups of $P2_1/c$. The difference is that in the monoclinic MP_2 the local environment is characterized by the corner-sharing MP_6 octahedra, whereas CuP_2 has the CuP_4 tetrahedra distant from each other.^{36,37} Moreover, a layered specific structure, which is consisted of Cu dimer layers and P networks in CuP_2 , is not observed in MP_2 . Such a distinct difference in structure is attributed to the variation of valence electron configurations from $Cu-d^{10}s^1$ in CuP_2 to $M-d^8s^1$ ($M = Co, Rh, Ir$) in MP_2 . On the other hand, the average M–P bond lengths are measured to be 2.25, 2.35 and 2.36 Å, which are much longer than the sum of M and P ionic radii of 1.05, 1.11 and 1.12 Å (ref. 55) for $M = Co, Rh$ and Ir , respectively. Therefore, it is obvious that the metal atoms are located inside the over-sized MP_6 octahedra, indicating their role as a heavy rattler in MP_2 crystal.

3.2 Lattice dynamics and thermal transport

Lattice dynamics and thermal transport properties including κ_l were studied using the phonon dispersions and cubic IFCs. The phonon dispersions and phonon DOS were firstly calculated using the harmonic IFCs. Fig. 2 shows the calculated phonon dispersion curves and atom-resolved phonon DOS for the monoclinic MP_2 crystals ($M = Co, Rh$ and Ir). Concerning the accuracy of calculations, we note that the $2 \times 2 \times 2$ supercell

Table 1 Lattice constants (a, b, c) and angle (β), average lattice thermal conductivity (κ_l), band gap (E_g), effective mass (m^*), elastic constant (C), deformation potential (D) and maximum figure of merit (ZT) at 700 K for the monoclinic MP_2 ($M = Co, Rh$ and Ir)

Property	CoP ₂	RhP ₂	IrP ₂
a, b, c (Å)	5.56, 5.54, 5.61 5.55, 5.54, 5.61 ^b	5.78, 5.83, 5.88 5.74, 5.79, 5.83 ^c	5.79, 5.83, 5.89 5.74, 5.79, 5.85 ^c
β (deg)	114.43 114.71 ^b	112.43 112.91 ^c	111.29 111.57 ^c
κ_l (W m ⁻¹ K)	0.63	1.21	1.81
E_g (eV)	0.44, 0.44 ^a 0.34 ± 0.03 ^b	0.45, 0.54 ^a	0.73, 0.96 ^a
m^*/m_h	0.64 ^a	0.68 ^a	0.91 ^a
D (eV)	15.98 ^a	18.09 ^a	18.97 ^a
C (GPa)	114.28	122.78 ^a	144.31
n -ZT	1.68 ^a	0.83 ^a	0.23 ^a
p -ZT	0.54 ^a	0.92 ^a	0.71 ^a

^a mBJ calculation, otherwise PBE calculation in this work.

^b Experimental values from ref. 53. ^c Experimental values from ref. 54.

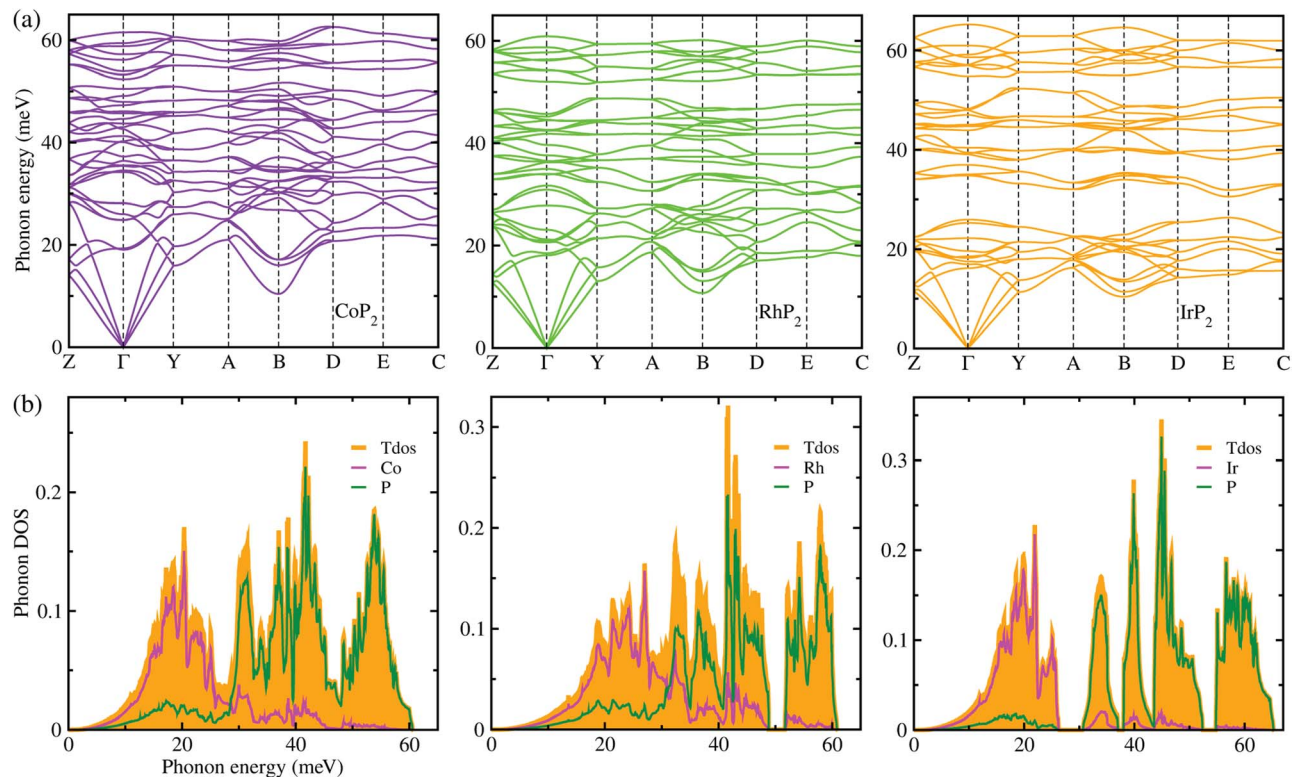


Fig. 2 (a) Phonon dispersion curves and (b) atom-resolved phonon DOS for monoclinic MP_2 ($M = \text{Co}, \text{Rh}$ and Ir), calculated using $2 \times 2 \times 2$ supercells, harmonic IFCs and PBE functional.

calculations give almost identical phonon dispersions with those by $3 \times 3 \times 3$ supercells (see Fig. S2 in the ESI[†]). No anharmonic phonon modes with imaginary eigenvalues were found in the phonon dispersions, indicating that the monoclinic MP_2 crystals are dynamically stable at ambient condition as reported in the previous experiments.^{53,54} Meanwhile, the phonon dispersion curves were found to be slightly broadened as going from Co to Rh and to Ir. Moreover, the definite gaps appeared in the high energy regions around 50 meV for RhP_2 and 30 and 50 meV for IrP_2 , while there is no gap for CoP_2 . Importantly, one can see that the acoustic modes are getting flattened going from the phonon BZ center (Γ) to the BZ boundary points. The atomic contributions to the lattice vibrations are found in the atom-resolved phonon DOS as shown in Fig. 2(b). It is found that the metal atoms mainly contribute to the acoustic and low-lying optical modes below ~ 25 meV, whereas the P atoms show the dominant contribution to the high energy optical modes.

To get an insightful understanding of the lattice dynamics, we looked deep into the phonon dispersions near the acoustic phonon region. Fig. 3 shows the magnified phonon dispersion curves in the acoustic phonon region with phonon energies ranging from 0 to 26 meV, where a longitudinal (red) and two transverse (blue and green) acoustic branches are plotted as colorful solid lines. The low-lying optical modes were found to be clearly coupled with the acoustic phonon modes, as they appeared in the acoustic region around 20 meV at Γ point. Meanwhile, the magenta-coloured circles indicate the avoided-

crossing points between the longitudinal acoustic and low-lying optical modes, also confirming the strong optic-acoustic coupling. Moreover, the low-lying optical modes coupled with the acoustic modes were found to be dominated by the metal atom vibrations as shown in Fig. 3(b) for the phonon DOS. Based on these considerations, we conceived that the metal atoms play a certain role in rattling vibrations for the acoustic and low-lying optical phonon modes below ~ 26 meV, as expected during the above discussion for the crystalline structures.

We also calculated the Grüneisen parameters corresponding to the acoustic phonon branches shown in Fig. 3, as these parameters are generally accepted as a direct measure of anharmonicity in the lattice vibrations. It was found that the Grüneisen parameters reach the maximum values over 10 along the Z - Γ line of the phonon BZ with average values of 3.61, 3.31 and 3.18 for $M = \text{Co}, \text{Rh}$ and Ir , respectively. These are comparable to the average value of 4.1 for SnSe, suggesting strong anharmonicity of the lattice vibrations in the monoclinic MP_2 . On the other hand, as going from $M = \text{Ir}$ to Rh and to Co, the average Grüneisen parameter increases gradually, indicating stronger lattice anharmonicity. We note that the rattling vibrations of the metal atoms (discussed below) and lattice anharmonicity will suppress the lattice thermal conductivity in these metal phosphides.

Next, within the single-mode CRTA to the phonon BTE, the Peierls's contribution to the lattice thermal conductivity κ_{IP} was calculated by summing contributions from the individual

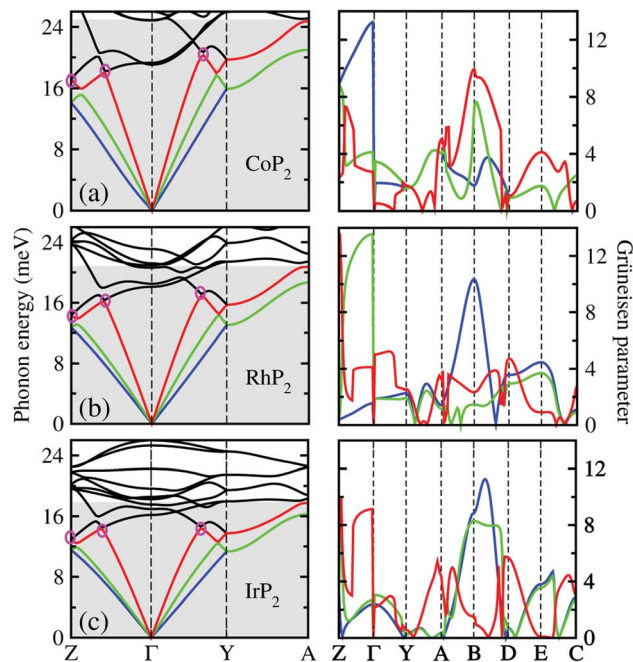


Fig. 3 Phonon dispersion curves in acoustic phonon region (gray-coloured region) around the Γ point (left panel) and the corresponding Grüneisen parameters (right panel) for (a) CoP_2 , (b) RhP_2 and (c) IrP_2 . A longitudinal (red) and two transverse acoustic modes (blue and green) are plotted by the colorful solid lines, while the low-lying optical modes by the black solid lines. Magenta-coloured circles indicate the avoided-crossing points between the low-lying optical and the longitudinal acoustic modes.

phonon modes λ as $\kappa_{\text{IP}} = \sum_{\lambda} C_{V\lambda} |v_{g\lambda}|^2 \tau_{\lambda}$, where $C_{V\lambda}$ is the mode-dependent heat capacity, $v_{g\lambda}$ the group velocity and τ_{λ} the phonon lifetime. The heat capacity and phonon group velocity were determined from the phonon dispersions calculated within the harmonic approximation, while the phonon lifetime was calculated by using the 3rd-order IFCs. According to the experimental fact that the metal phosphides such as CuP_2 and CoP_2 can be synthesized in well-crystallized form at around 900 K,^{36,53} we investigated the lattice thermal transport and thermoelectric properties at temperatures below 700 K for MP_2 ($M = \text{Co}, \text{Rh}$ and Ir). Our calculations revealed that the heat capacity increases rapidly as increasing temperature from 0 to 400 K and slowly after that, and substantially increases as going from $M = \text{Co}$ to Rh and to Ir (see Fig. S3 in the ESI†). The phonon group velocity v_g and phonon lifetime $\tau_{3\text{rd}}$ at 700 K as a logarithmic function of phonon energy were shown in Fig. 4. At the Γ point, v_g was estimated to be about 6500 m s^{-1} , which is comparable to the value of CuP_2 but relatively large compared to those ($1000\text{--}2000 \text{ m s}^{-1}$) of conventional TEMs such as SnSe and PbTe . Meanwhile, $\tau_{3\text{rd}}$ calculated with the 3rd-order IFCs was found to be below 40 ps (see Fig. S4 in the ESI†), which is one order of magnitude smaller than that of SnSe . Furthermore, $\tau_{3\text{rd}}$ was found to rapidly decrease as increasing the phonon energy from 0 to 25 meV. Such rapid drop in $\tau_{3\text{rd}}$ is well coincident with the sharply peaked phonon DOS contributed from the metal atoms, which might be due to the strong phonon scattering by rattling

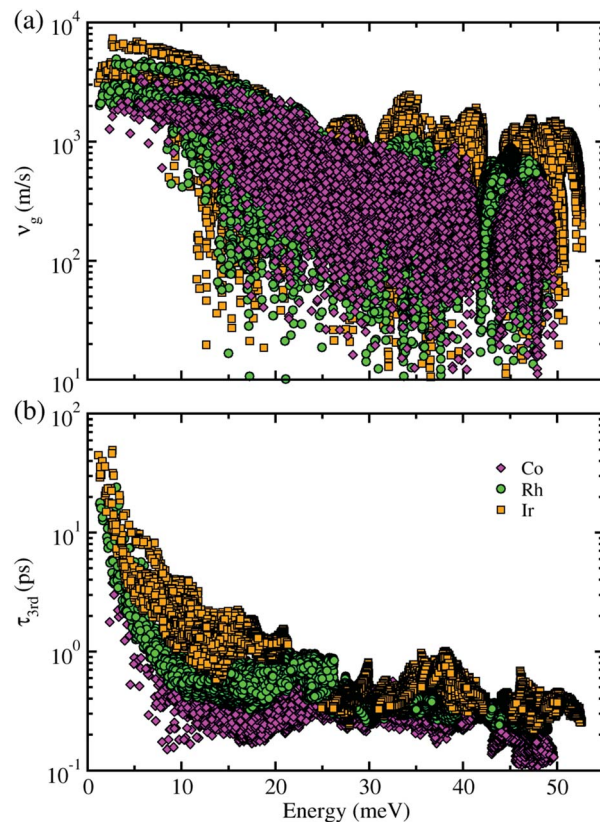


Fig. 4 (a) Phonon group velocity v_g and (b) phonon lifetime $\tau_{3\text{rd}}$ as a function of phonon energy at 700 K for monoclinic MP_2 ($M = \text{Co}, \text{Rh}, \text{Ir}$).

vibrations of the metal atoms as will be discussed below. Finally, it is worth noting that v_g and $\tau_{3\text{rd}}$ follow the same variation tendency to the heat capacity as varying the species of metal atom from $M = \text{Co}$ to Rh and to Ir in the metal phosphides MP_2 (see Fig. S14 for the average v_g as a function of temperature in ESI†).

Given C_V , v_g and $\tau_{3\text{rd}}$ as calculated in this work, we assessed the Peierls's contribution κ_{IP} to the lattice thermal conductivity, while the coherent contribution κ_{IC} was determined from the off-diagonal elements of the phonon velocity operator (see Fig. S5 for convergence test in the ESI†). Fig. 5(a) shows the total lattice thermal conductivity κ_l evaluated by summing κ_{IP} and κ_{IC} (see Fig. S6 for the Cartesian components in the ESI†). In this figure, it was found that at increasing temperature the total lattice thermal conductivity decreases for the three kinds of metal phosphides since the Peierls's contribution decreases as well but the much weaker coherent contribution increases, as confirmed in the previous work.⁵⁰ At the high-temperature limit, the asymptotic relation of $\kappa_{\text{IP}} \propto T^{-1}$ was satisfied for the Peierls's contribution,⁵¹ which is however in broad disagreement with experiments in most anharmonic and/or complex crystals. When adding the coherent contribution, the total lattice thermal conductivity κ_l was found to decrease much milder with increasing temperature than the T^{-1} tendency. Specifically, at 700 K, the total κ_l was calculated to be 0.63, 1.21

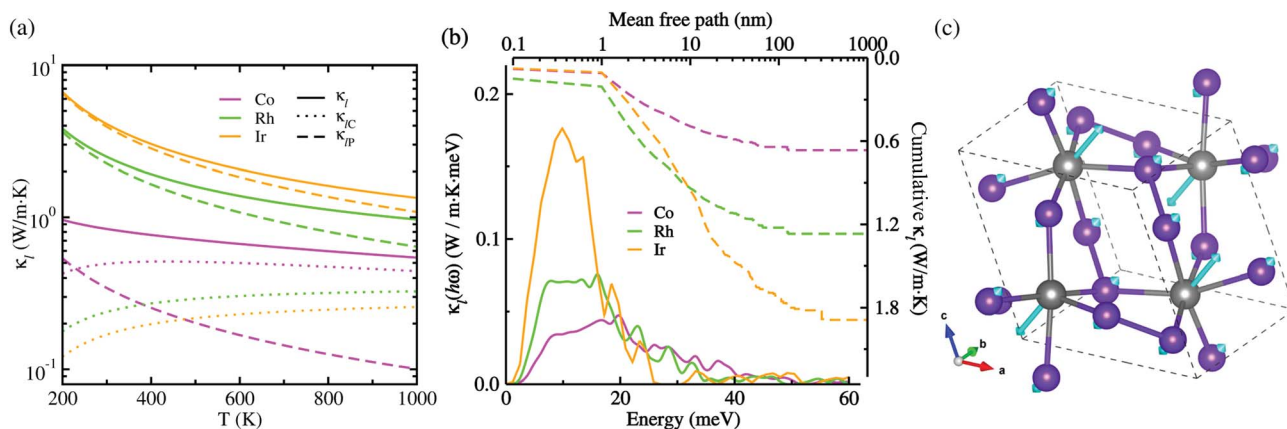


Fig. 5 (a) Lattice thermal conductivity κ_l (solid lines) with Peierls's contribution κ_{lP} (dashed lines) and coherent contribution κ_{lC} (dotted lines) as increasing temperature T , (b) thermal conductivity spectra $\kappa_l(h\omega)$ as a function of phonon energy (solid lines) and cumulative κ_l as a function of mean free path (dashed lines) at 700 K, and (c) ball-and-stick view of rattling vibrations of metal atoms corresponding to the lowest optical phonon mode at the T point of the phonon BZ for the monoclinic MP_2 ($M = \text{Co, Rh, Ir}$), where the cyan-coloured arrow indicates the atomic displacement vector.

and $1.81 \text{ W m}^{-1} \text{ K}$ for CoP_2 , RhP_2 and IrP_2 , respectively, being much lower than or comparable to the value of $1.75 \text{ W m}^{-1} \text{ K}$ for CuP_2 ,³⁶ which might be due to the rattling vibrations of the metal atoms as depicted in Fig. 5(c). This implies that the metal phosphides can exhibit better thermoelectric performance than CuP_2 . As going from Co to Rh and to Ir, the metal phosphide was found to have larger κ_l at the given temperature owing to larger C_V , ν_g and τ_{3rd} . The larger κ_l is attributed to the weaker lattice anharmonicity and the smaller Grüneisen parameter. On the other hand, the theoretical investigation estimated the amorphous limit of κ_l to be $1.78 \text{ W m}^{-1} \text{ K}$ at 300 K for CoP_2 ,⁵⁶ which is much smaller than our calculation value of $\sim 8.7 \text{ W m}^{-1} \text{ K}$ for the single crystalline CoP_2 .

Fig. 5(b) presents the thermal conductivity spectra $\kappa_l(h\omega)$ as a function of phonon energy and the cumulative κ_l as a function of mean free path (MFP) calculated at 700 K. It can be seen that the low-lying optical phonon modes coupled with the acoustic modes below 25 meV provide dominant contribution to the total κ_l , whereas the high-energy optical modes have negligible contribution. The calculated cumulative κ_l curves revealed that the maximum length of MFP is about 200 nm and the dominant heat-carrying phonon modes have the mean free pass ranging from 1 to 60 nm for MP_2 . We note, in passing, that nanostructuring can significantly decrease κ_l of the sample particles with a size smaller than 40 nm in MP_2 , which is more beneficial for enhancing its thermoelectric performance.

3.3 Electronic structure

The electronic properties calculated in this work includes the band structure and DOS, which will be used to evaluate the electronic transport properties of TEMs. Fig. 6(a) shows the electronic band structure calculated using the mBJ and PBE XC functionals for comparison for the metal phosphides MP_2 . For the case of CoP_2 , the direct transition was found at the B point of the electron BZ, whereas for the cases of RhP_2 and IrP_2 the indirect transition were found from the valence band maximum

(VBM) at the B point to the conduction band minimum (CBM) at the T point. This indicates that CoP_2 is much more advantageous to creation of charge carriers than RhP_2 and IrP_2 . For all the three compounds, the band structures are characterized by relative flatness on the top of VBs along the A-B and E-C lines while highly dispersive along the other lines. Moreover, both the VBs and CBs were observed to be doubly degenerated along the Y-A and D-E-C lines. Such band characteristics are revealed irrespective of the choice of XC functional, leading to high thermopower factor for the metal phosphides like the semiconductor-based TEMs. Fig. 6(b) displays the mBJ-calculated total and atom-projected partial DOS. It was found that both the CBs and VBs are characterized by strong p-d hybridization between d states of metal atom and 3p states of phosphorus atom.

For comparison between the mBJ and PBE calculations, we found that the mBJ calculations slightly push up the conduction bands, thus widening the band gap E_g , compared with the PBE calculations. This effect is getting more pronounced as going from Co to Rh and to Ir. As listed in Table 1, the mBJ functional yielded larger band gaps of 0.44, 0.54 and 0.96 eV than the values of 0.44, 0.45 and 0.73 eV by the PBE functional for Co, Rh and Ir phosphides, respectively. We note that the band gap of 0.44 eV calculated in this work with the PBE and mBJ functionals are in excellent agreement with the previous PBE-calculation value of 0.44 eV for CoP_2 .⁵⁶ According to the previous work,¹⁷ such narrow band gaps can give rise to the large σ and S , therefore enhancing the thermopower factor $S^2\sigma$. The mBJ functional is generally able to give more reliable band structures in comparison with experiments, as confirmed in our previous works for CuP_2 and CsAg_5Te_3 .^{37,46} For the case of CoP_2 , both the mBJ and PBE functionals give the same band gap of 0.44 eV in reasonable agreement with the experimental value of $0.34 \pm 0.03 \text{ eV}$ which was determined as a slope of temperature-dependent specific electrical resistivity for CoP_2 .⁵³ As going from $M = \text{Co}$ to Rh and to Ir, the band gap increases clearly,

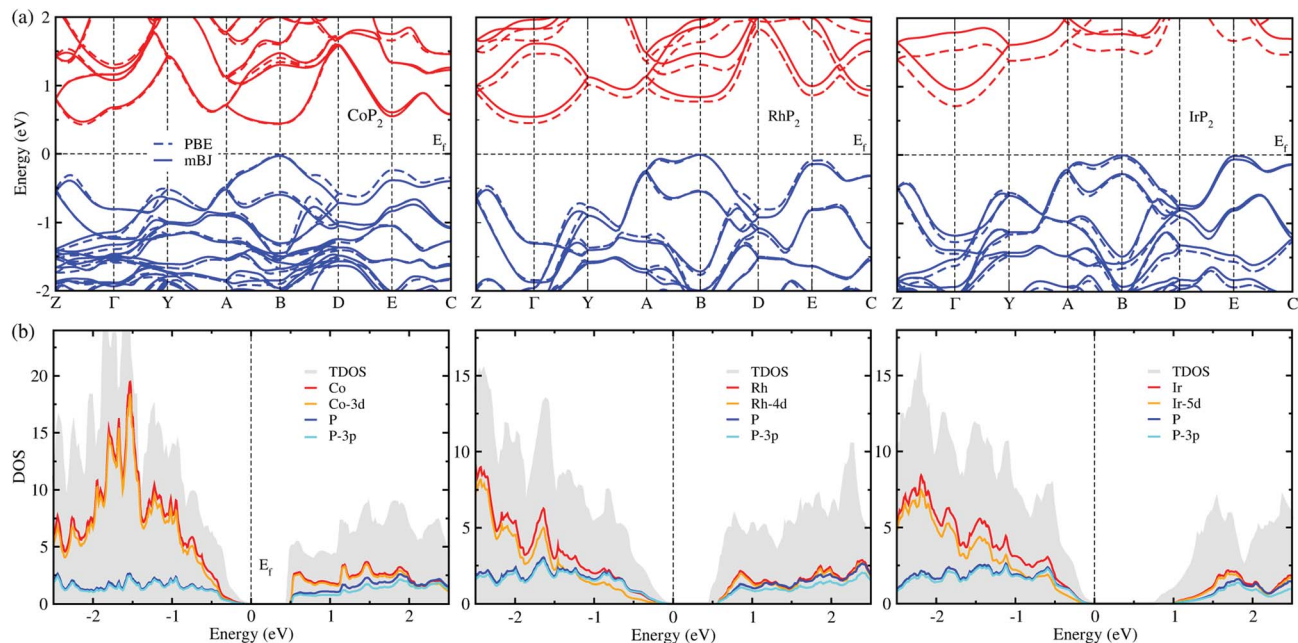


Fig. 6 (a) Electronic band structures calculated with the PBE (dashed lines) and mBJ (solid lines) functionals. Conduction and valence bands are represented by blue and red colors, respectively. (b) Total DOS (TDOS) and atom-projected partial DOS obtained with the mBJ functional. The Fermi level E_f is set to zero and marked by black dashed lines.

indicating that CoP_2 is more favorable for generating charge carriers due to the lower direct band gap compared with the higher indirect band gaps of RhP_2 and IrP_2 . In addition, we calculated DOS of CoP_2 by employing the HSE06 hybrid functional and LDA + U approach with $U = 4$ eV for Co-3d states, yielding the band gaps of 0.82 and 0.59 eV, respectively (see Fig. S7 and S8 in the ESI†). These values are far larger than the experimental value. Therefore, we used only the mBJ functional to estimate the electronic transport properties as will be discussed below.

3.4 Thermoelectric performance

At the final step, we calculated the electrical conductivity σ , Seebeck coefficient S , thermopower factor $S^2\sigma$ and figure of merit ZT for thermoelectric performance. Firstly, the relaxation time τ of charge carrier was estimated as a function of temperature by using eqn (1). To do this, we calculated the deformation potential D representing the electron-acoustic phonon interaction and the effective mass m^* of charge carriers from the calculated band structures (see Fig. S9 for D in the ESI†). The elastic constant C was calculated by applying the DFPT method. Table 1 lists the calculated values for the metal phosphides MP_2 ($M = \text{Co}, \text{Rh}$ and Ir). It was found that D , m^* and C increase gradually as going from Co to Rh and to Ir. Given these quantities of D , m^* and C , we could assess the relaxation time τ as a function of temperature (see Fig. S4 in the ESI†), demonstrating that τ decreases as increasing temperature and also going from Co to Rh and to Ir at the given temperature.

Then, we estimated the thermopower factor $S^2\sigma$ as a function of carrier concentration at temperatures of 300, 500 and 700 K, as shown in Fig. 7(a). It was found that by optimizing the carrier

concentration the metal phosphides can exhibit the maximum $S^2\sigma$ values of 10.2, 7.1 and 6.4 $\text{mW m}^{-1} \text{K}^2$ at 700 K for $M = \text{Co}, \text{Rh}$ and Ir , respectively. These estimated values are larger than the values of 6.4 and 3.3 $\text{mW m}^{-1} \text{K}^2$ at 700 K for CuP_2 (ref. 37) and conventional TEM GeTe,⁸ thereby leading to higher thermoelectric performance for MP_2 . As going from $M = \text{Co}$ to Rh and Ir, meanwhile, the maximum $S^2\sigma$ value was found to decrease at the given temperature due to the decrease of the relaxation time. For the case of IrP_2 , the n -type power factor is shown to decrease slowly according to the increment of electron concentration, indicating that the electron–electron scattering is so weak that it has small influence on the electronic transport properties.

Finally, we determined the figure of merit ZT as a function of carrier concentration at temperatures of 300, 500 and 700 K, as shown in Fig. 7(b) (see Fig. S10 for convergence test in the ESI†). It was observed that ZT exhibits the similar variation tendency to $S^2\sigma$ for selection of metal atom; the maximum ZT value at the given temperature decreases as going from $M = \text{Co}$ to Rh to Ir, because $S^2\sigma$ decreases while κ_1 increases according the change of metal atom in MP_2 . Our calculations revealed that the n -type doping can enhance the thermoelectric performance than the p -type doping at the given temperature for CoP_2 , but *vice versa* for RhP_2 and IrP_2 . Such inversion in the favorable carrier type is ascribed to the inverse behavior of electronic band structures near the Fermi level for CoP_2 versus RhP_2 and IrP_2 . As shown in Fig. 6(a), some conduction (valence) states appear at E, C points and along $Z-\Gamma$ ($A-B$) line in the CBs (VBs) with almost the same eigenvalues as CBM (VBM) at B point for CoP_2 (RhP_2 and IrP_2) but not for RhP_2 and IrP_2 (CoP_2). These conduction and valence states near the Fermi level can play a positive role in

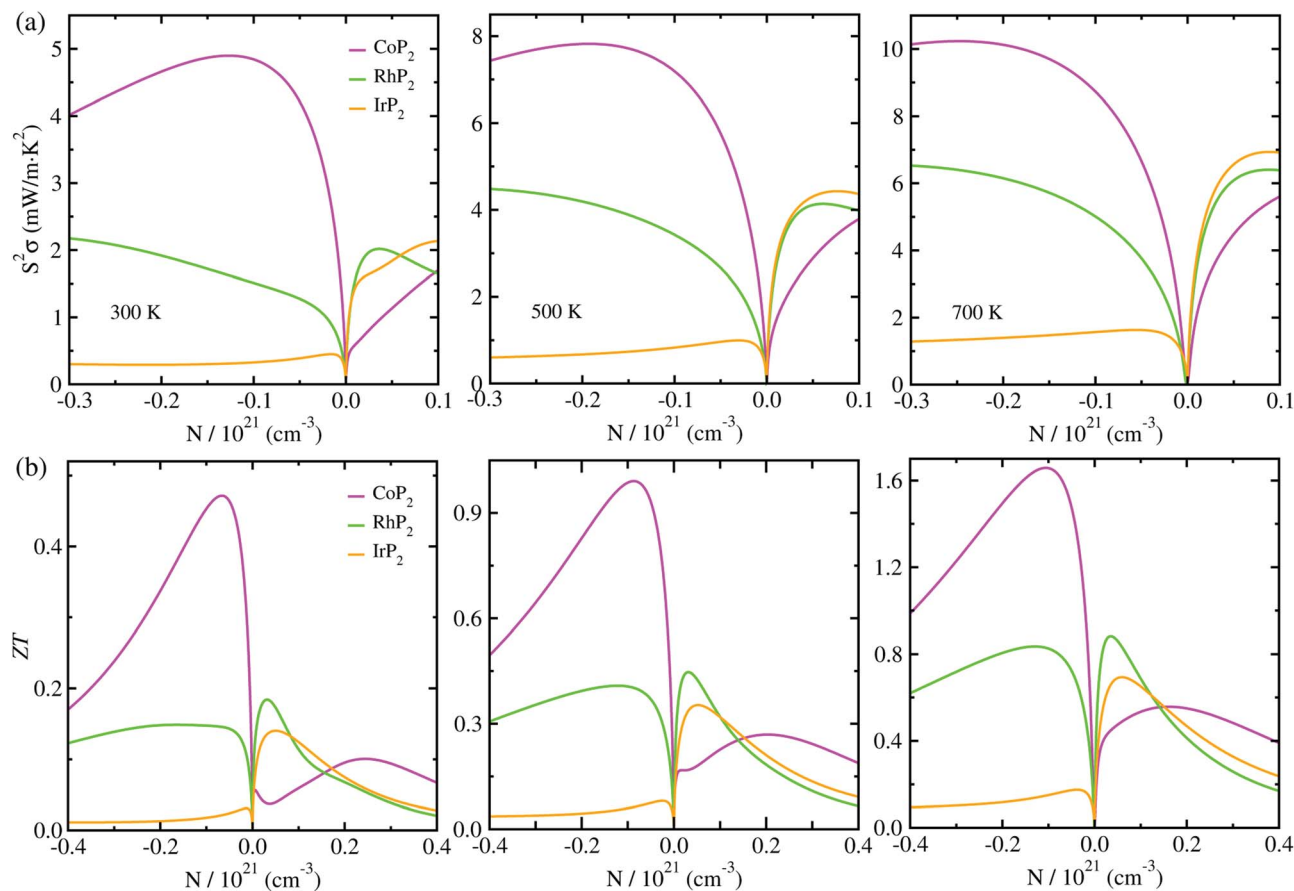


Fig. 7 (a) Thermopower factor $S^2\sigma$ and (b) figure of merit ZT as functions of carrier concentration N , calculated with the mBJ functional at $T = 300, 500$ and 700 K for the monoclinic MP_2 ($M = \text{Co, Rh}$ and Ir).

transporting the electrons and holes, respectively. As increasing temperature, the maximum ZT was found to be remarkably enhanced for all the metal phosphides.

For CoP_2 , in particular, the n -type ZT at 700 K reaches about 1.7 at a carrier concentration of about $9 \times 10^{19} \text{ cm}^{-3}$, which is clearly higher compared to its Cu-based counterpart CuP_2 . As shown in Table 1, the maximum ZT values upon n -type doping at 700 K were determined to be 0.87 and 0.23 for RhP_2 and IrP_2 , respectively. Meanwhile, the maximum p - ZT values at 700 K are $0.54, 0.92$ and 0.71 for $\text{CoP}_2, \text{RhP}_2$ and IrP_2 , respectively. Especially, the metal phosphides CoP_2 and RhP_2 show the high ZT values for both n - and p -type dopings at 700 K, and therefore, the combination of n -type CoP_2 and p -type RhP_2 (or IrP_2), *i.e.*, n - CoP_2/p - RhP_2 (or n - CoP_2/p - IrP_2), will provide a substantial improvement of thermoelectric performance over the pure CoP_2 and RhP_2 (or IrP_2). Our PBE-calculation of p - ZT (0.57) at 700 K is smaller than the previous calculation (0.93) for CoP_2 by Pohls *et al.*⁵⁶ in which the authors employed the PBE functional and the amorphous limit of κ_1 for calculating the ZT . In order to validate our calculations, we checked convergence of the figure of merit ZT according to k -point mesh and the choice of XC functional (see Fig. S10 and S11 in the ESI[†]). Meanwhile, we presented the electronic band structures and thermopower factors calculated with considering the SOC effect (see Fig. S12

and S13 in the ESI[†]), finding that the SOC effect has negligible impact for the metal phosphides MP_2 . It was confirmed that the numerical error of our calculations is within the reasonable magnitude below 0.2 . From our calculations, it can be concluded that the metal phosphide CoP_2 in the monoclinic phase is the most preferable candidate for high performance TEM, while RhP_2 and IrP_2 should not be precluded, and the thermoelectric performance can be enhanced by optimizing the carrier concentration.

4 Conclusions

In this work, we have performed first-principles calculations to predict the thermoelectric properties of metal phosphides MP_2 ($M = \text{Co, Rh}$ and Ir) in monoclinic phase. Lattice dynamics calculations revealed that these metal phosphides have remarkably low lattice thermal conductivities of $0.63, 1.21$ and $1.81 \text{ W m}^{-1} \text{ K}$ at 700 K for $M = \text{Co, Rh}$ and Ir , respectively. Through the scrutiny of crystalline structure, it was found that such low κ_1 is most likely attributed to the atomic rattling vibrations of the metal atoms, which strongly scatter the low-lying optical phonon modes coupled with the heat-carrying acoustic modes. Such findings were further confirmed by the analysis of phonon DOS, avoided-crossing behavior of phonon

dispersion curves, Grüneisen parameters and cumulative κ_1 . By the use of the mBJ XC functional, we calculated the electronic band structures with the band gaps, revealing that CoP₂ has a direct band gap of 0.44 eV while RhP₂ and IrP₂ have indirect larger band gaps of 0.54 and 0.96 eV. These compounds were found to have high thermopower factors of 10.2, 7.1 and 6.4 mW m⁻¹ K² at 700 K for M = Co, Rh and Ir, being superior to the conventional thermoelectrics of GeTe. The maximum figures of merit *ZT* were found to reach relatively high values of 1.68, 0.87 and 0.71 at 700 K for M = Co, Rh and Ir by optimizing the carrier concentrations, concluding that CoP₂ is the most preferable for TEM while RhP₂ and IrP₂ should not be precluded. Our work offers a novel materials platform to search for high-performance thermoelectrics from metal phosphides.

Author contributions

Chung-Jin Kang and Un-Gi Jong developed the original project, performed the calculations and drafted the first manuscript. Yun-Hyok Kye assisted with the DFT calculations and the post-processing of calculation results, and contributed to useful discussions. Chol-Jun Yu supervised the work. All authors reviewed the manuscript.

Conflicts of interest

There are no conflicts to declare.

Acknowledgements

This work is supported as part of the basic research project "Design of New Energy Materials" (No. 2021-12) funded by the State Commission of Science and Technology, DPR Korea. Computations have been performed on the HP Blade System C7000 (HP BL460c) managed by Faculty of Materials Science, Kim Il Sung University.

References

- 1 C. Forman, I. K. Muritala, R. Pardemann and B. Meyer, *Renewable Sustainable Energy Rev.*, 2016, **57**, 1568–1579.
- 2 L. E. Bell, *Science*, 2008, **321**, 1457–1461.
- 3 G. J. Snyder and E. S. Toberer, *Nat. Mater.*, 2008, **7**, 105–114.
- 4 J. R. Sootsman, D. Y. Chung and M. G. Kanatzidis, *Angew. Chem., Int. Ed.*, 2009, **48**, 8616–8639.
- 5 C. Wood, *Rep. Prog. Phys.*, 1988, **51**, 459–539.
- 6 A. Shakouri, *Annu. Rev. Mater. Res.*, 2011, **41**, 433–448.
- 7 M. Hong, Z.-G. Chen, L. Yang, Y.-C. Zou, M. S. Dargusch, H. Wang and J. Zou, *Adv. Mater.*, 2018, **30**, 1705942–1705949.
- 8 Y. Pei, J. Lensch-Falk, E. S. Toberer, D. L. Medlin and G. J. Snyder, *Adv. Funct. Mater.*, 2011, **21**, 241–249.
- 9 Y. Gelbstein and J. Davidow, *Phys. Chem. Chem. Phys.*, 2014, **16**, 20120–20126.
- 10 M. Oudah, K. M. Kleinke and H. Kleinke, *Inorg. Chem.*, 2015, **54**, 845–849.
- 11 F. Mehmood, H. Wang, W. Su, M. Khan, T. Huo, T. Chen, G. Chebanova, A. Romanenko and C. Wang, *Inorg. Chem.*, 2021, **60**, 3452–3459.
- 12 X. Shen, Y. Xia, G. Wang, F. Zhou, V. Ozolins, X. Lu, G. Wang and X. Zhou, *J. Mater. Chem. A*, 2018, **6**, 24877–24884.
- 13 M. Beekman and G. S. Nolas, *J. Mater. Chem.*, 2008, **18**, 842–851.
- 14 T. Takabatake, K. Suekuni, T. Nakayama and E. Kaneshita, *Rev. Mod. Phys.*, 2014, **86**, 669–716.
- 15 A. Gharlegghi, Y. H. Chu, F. H. Lin, Z. R. Yang, Y. H. Pai and C. J. Liu, *ACS Appl. Mater. Interfaces*, 2016, **8**, 5205–5215.
- 16 S. Guo, Z. Liu, Z. Feng, T. Jia, S. Anand, G. J. Snyder and Y. Zhang, *J. Mater. Chem. A*, 2020, **8**, 23590–23598.
- 17 J. He, M. Amsler, Y. Xia, S. S. Naghavi, V. I. Hegde, S. Hao, S. Goedecker, V. Ozolins and C. Wolverton, *Phys. Rev. Lett.*, 2016, **117**, 046602–046607.
- 18 Q. Jiang, H. Yan, J. Khaliq, H. Ning, S. Grasso, K. Simpson and M. J. Reece, *J. Mater. Chem. A*, 2014, **2**, 5785–5790.
- 19 T. Zhu, Z. Xu, J. He, J. Shen, S. Zhu, L. Hu, T. Tritt and X. Zhao, *J. Mater. Chem. A*, 2013, **1**, 11589–11594.
- 20 Y. Ma, Q. Hao, B. Poudel, Y. Lan, B. Yu, D. Wang, G. Chen and Z. Ren, *Nano Lett.*, 2008, **8**, 2580–2584.
- 21 A. Suwardi, S. H. Lim, Y. Zheng, X. Wang, S. W. Chien, X. Y. Tan, Q. Zhu, L. Mun, N. Wang, J. Cao, W. Wang, Q. Yan, C. K. I. Tan and J. Xu, *J. Mater. Chem. C*, 2020, **8**, 16940–16948.
- 22 G. Tan, F. Shi, S. Hao, H. Chi, L. D. Zhao, C. Uher, C. Wolverton, V. P. Dravid and M. G. Kanatzidis, *J. Am. Chem. Soc.*, 2015, **137**, 5100–5112.
- 23 B. Srinivasan, C. Boussard-Pledel and B. Bureau, *Mater. Lett.*, 2018, **230**, 191–194.
- 24 D. Wu, L. Xie, X. Xu and J. He, *Adv. Funct. Mater.*, 2019, **29**, 1806613–1806622.
- 25 H. Wang, Y. Pei, A. D. LaLonde and G. J. Snyder, *Proc. Natl. Acad. Sci. U. S. A.*, 2012, **109**, 9705–9709.
- 26 H. Wang, Y. Pei, A. D. Lalonde and G. J. Snyder, *Adv. Mater.*, 2011, **23**, 1366–1370.
- 27 G. Tan, F. Shi, S. Hao, L. Zhao, H. Chi, X. Zhang, C. Uher, C. Wolverton, V. P. Dravid and M. G. Kanatzidis, *Nat. Commun.*, 2016, **7**, 12167–12175.
- 28 L. D. Zhao, G. Tan, S. Hao, J. He, Y. Pei, H. Chi, H. Wang, S. Gong, H. Xu, V. P. Dravid, C. Uher, G. J. Snyder, C. Wolverton and M. G. Kanatzidis, *Science*, 2016, **351**, 141–144.
- 29 L. D. Zhao, S. H. Lo, Y. Zhang, H. Sun, G. Tan, C. Uher, C. Wolverton, V. P. Dravid and M. G. Kanatzidis, *Nature*, 2014, **508**, 373–377.
- 30 C. Zhou, Y. K. Lee, Y. Yu, S. Byun, Z. Z. Luo, H. Lee, B. Ge, Y. L. Lee, X. Chen, J. Y. Lee, O. Cojocar-Miredin, H. Chang, J. Im, S. P. Cho, M. Wuttig, V. P. Dravid, M. G. Kanatzidis and I. Chung, *Nat. Mater.*, 2021, **20**, 1378–1384.
- 31 W. Lee, H. Li, A. B. Wong, D. Zhang, M. Lai, Y. Yu, Q. Kong, E. Lin, J. J. Urban, J. C. Grossman and P. Yang, *Proc. Natl. Acad. Sci. U. S. A.*, 2017, **114**, 8693–8697.
- 32 U.-G. Jong, Y.-S. Kim, C.-H. Ri, Y.-H. Kye and C.-J. Yu, *J. Phys. Chem. C*, 2021, **125**, 6013–6019.

- 33 Q. Jin, S. Jiang, Y. Zhao, D. Wang, J. Qiu, D.-M. Tang, J. Tan, D.-M. Sun, P.-X. Hou and X.-Q. Chen, *Nat. Mater.*, 2019, **18**, 62–68.
- 34 A. Ramanathan, J. E. Leisen and H. S. L. Pierre, *Inorg. Chem.*, 2021, **60**, 1398–1410.
- 35 W. Rahim, J. M. Skelton and D. O. Scanlon, *J. Mater. Chem. A*, 2020, **8**, 16405–16420.
- 36 J. Qi, B. Dong, Z. Zhang, Z. Zhang, Y. Chen, Q. Zhang, S. Danilkin, X. Chen, J. He, L. Fu, X. Jiang, G. Chai, S. Hiroi, K. Ohara, Z. Zhang, W. Ren, T. Yang, J. Zhou, S. Osami, J. He, D. Yu, B. Li and Z. Zhang, *Nat. Commun.*, 2020, **11**, 5197–5204.
- 37 U.-G. Jong, C.-H. Ri, C.-J. Pak, C.-H. Kim, S. Cottenier and C.-J. Yu, *New J. Chem.*, 2021, **45**, 21569–21576.
- 38 J. P. Odile, S. Soled, C. A. Castro and A. Wold, *Inorg. Chem.*, 1978, **17**, 283–286.
- 39 G. Kresse and J. Furthmüller, *Comput. Mater. Sci.*, 1996, **6**, 15–50.
- 40 G. Kresse and J. Furthmüller, *Phys. Rev. B: Condens. Matter Mater. Phys.*, 1996, **54**, 11169–11186.
- 41 P. E. Blöchl, *Phys. Rev. B: Condens. Matter Mater. Phys.*, 1994, **50**, 17953–17979.
- 42 G. Kresse and D. Joubert, *Phys. Rev. B: Condens. Matter Mater. Phys.*, 1999, **59**, 1758–1775.
- 43 J. P. Perdew, K. Burke and M. Ernzerhof, *Phys. Rev. Lett.*, 1996, **77**, 3865–3870.
- 44 F. Tran and P. Blaha, *Phys. Rev. Lett.*, 2009, **102**, 226401–226406.
- 45 K. H. Madsen, J. Carrete and M. J. Verstraete, *Comput. Phys. Commun.*, 2018, **231**, 140–145.
- 46 U.-G. Jong, C.-J. Kang, S.-Y. Kim, H.-C. Kim and C.-J. Yu, *Phys. Chem. Chem. Phys.*, 2022, **24**, 5729–5737.
- 47 S. Sharma, J. K. Dewhurst and C. Ambrosch-Draxl, *Phys. Rev. B: Condens. Matter Mater. Phys.*, 2003, **67**, 165332–165341.
- 48 F. Zhou, W. Nielson, Y. Xia and V. Ozolins, *Phys. Rev. Lett.*, 2014, **113**, 185501–185505.
- 49 T. Tadano, Y. Gohda and S. Tsuneyuki, *J. Phys.: Condens. Matter*, 2014, **26**, 225402–225413.
- 50 M. Simoncelli, N. Marzari and F. Mauri, *Nat. Phys.*, 2019, **15**, 809–816.
- 51 R. E. Peierls, *Quantum Theory of Solids*, Oxford University Press, Oxford, 1964, p. 238.
- 52 P. B. Allen and J. L. Feldman, *Phys. Rev. Lett.*, 1989, **62**, 645–648.
- 53 W. Jeitschko, U. Floerke and U. D. Scholz, *J. Solid State Chem.*, 1984, **52**, 320–326.
- 54 A. Kjekshus, *Acta Chem. Scand., Ser. A*, 1971, **31**, 517–529.
- 55 R. Shannon, *Acta Crystallogr., Sect. A: Cryst. Phys., Diffraction. Gen. Crystallogr.*, 1976, **32**, 751–767.
- 56 J.-H. Pohls, A. Faghanini, G. Petretto, U. Aydemir, F. Ricci, G. Li, M. Wood, S. Ohno, G. Hautier, G. J. Snyder, G.-M. Rignanese, A. Jain and M. A. White, *J. Mater. Chem. C*, 2017, **5**, 12441–12456.