

T-type channels buddy up

Ray W. Turner · Gerald W. Zamponi

Received: 17 December 2013 / Accepted: 23 December 2013 / Published online: 11 January 2014
© The Author(s) 2014. This article is published with open access at Springerlink.com

Abstract The electrical output of neurons relies critically on voltage- and calcium-gated ion channels. The traditional view of ion channels is that they operate independently of each other in the plasma membrane in a manner that could be predicted according to biophysical characteristics of the isolated current. However, there is increasing evidence that channels interact with each other not just functionally but also physically. This is exemplified in the case of Cav3 T-type calcium channels, where new work indicates the ability to form signaling complexes with different types of calcium-gated and even voltage-gated potassium channels. The formation of a Cav3-K complex provides the calcium source required to activate KCa1.1 or KCa3.1 channels and, furthermore, to bestow a calcium-dependent regulation of Kv4 channels via associated KChIP proteins. Here, we review these interactions and discuss their significance in the context of neuronal firing properties.

Keywords Cav3 · T-type · KCa3.1 · KCa1.1 · BK · Kv4 · A-type

Introduction

Control over the frequency and pattern of neuronal spike output defines neural coding of information in the brain. Central to this process are ion channels that conduct potassium to control excitability by hyperpolarizing the membrane

potential. We know of numerous isoforms of voltage-gated potassium channels that contribute to controlling excitability [23, 47]. But few of these have as key a role in regulating the frequency and pattern of spike discharge as calcium-gated potassium channels [135]. A great deal of work has focused on the ability for high-voltage-activated (HVA) calcium channels to activate either small conductance (SK, KCa2.x) [2, 76, 125] or big conductance (BK, KCa1.1) potassium channels to control cell excitability [10–12, 45, 139]. Calcium-dependent control of potassium channels has also been recognized to reflect interactions at the level of either a microdomain or nanodomain, a designation that signifies an interchannel distance of <50 or 50–200 nm, respectively [36]. This is important because it reflects an entirely different degree of control that calcium influx can exert on potassium channel activation that may be necessary to effect different cellular functions. Indeed, interactions at the nanodomain level can allow the voltage dependence of specific HVA calcium channel isoforms to be conferred onto KCa1.1 channels [11], providing greater control over the onset voltage and time of hyperpolarizing currents.

Until recently there were only a few reports of Cav3 (T-type) calcium channels being functionally coupled to activation of either KCa2.x [26, 138] or KCa1.1 [44, 111] channels. This coupling was defined entirely on the basis of physiological interactions with little protein biochemical work to assess the nature of the link or its control of potassium channel function at the level of a microdomain or nanodomain. Recent work reveals that Cav3 calcium channels can form an association at the molecular level with calcium-gated potassium channels and even a voltage-gated potassium channel. Thus, Cav3 channels have been shown through protein biochemical and biophysical analyses to associate closely with KCa1.1 channels [101] as well as intermediate conductance calcium-activated potassium channels (KCa3.1, SK4, KCa3.1) [34]. Moreover, an association at the molecular level was detected between Cav3 channels and the Kv4 family of voltage-gated potassium channels that generate transient A-type currents [4, 5]. In each case linking potassium channel activation to calcium influx through Cav3 channels allows

This article is published as part of the Special Issue on *T-type (Cav3) calcium channels in health and disease*.

R. W. Turner (✉)
Department of Cell Biology and Anatomy, Hotchkiss Brain Institute,
University of Calgary, HRIC Bldg, Room 1AA14, 3330 Hospital Dr.
N.W., Calgary T2N 4N1, Alberta, Canada
e-mail: rwturner@ucalgary.ca
URL: <http://www.acs.ucalgary.ca/~rwturner>

R. W. Turner · G. W. Zamponi
Department of Physiology and Pharmacology, Hotchkiss Brain
Institute, University of Calgary, Calgary T2N 4N1, Alberta, Canada

outward current to be triggered from membrane voltages well below resting membrane potential and even over the course of a full-blown spike response. Interestingly, activation of these potassium channels by Cav3 calcium influx relies on three distinct calcium sensing mechanisms. The ability for these complexes to function at either a microdomain or nanodomain level proves to depend on the sensitivity of the calcium sensor in relation to the relatively weak conductance of Cav3 channels compared to HVA calcium channels.

Several recent reviews have been published on the properties of T-type calcium channels on topics that will not be covered here [16, 20, 27, 51, 64, 65, 100, 120, 137]. This review summarizes the current state of knowledge of how Cav3 channel associate with three distinct forms of potassium channel to form ion channel complexes that acquire functional roles that reflect the combination of biophysical properties of each partner in the complex. To fully understand the interplay between calcium and potassium channels, we briefly summarize key features of the responsible subunits and proteins involved.

Cav3 calcium channels

Voltage-gated calcium channels permit the entry of calcium ions into the cytosol in response to membrane depolarizations. Voltage-gated calcium channels can be divided into two major families: HVA calcium channels that open in response to large membrane depolarizations and low-voltage-activated (LVA) channels that open in response to smaller membrane depolarizations [122]. The HVA channels include L-, P-, Q-, N-, and R-types which can be distinguished based on their biophysical and pharmacological properties. HVA channels share a common multimeric assembly of Cav α 1, Cav α 2 δ , and Cav β subunits to form a functional complex [17]. Moreover, these channels all interact constitutively with calmodulin [78]. In addition to their more depolarized range of activation, they are distinguished from LVA channels by their larger single channel conductance and open probability, which allow these channels to support large calcium influxes at depolarized potentials. Indeed, it has been estimated that a single HVA calcium channel will increase internal calcium from a resting value of 70–100 nM to greater than 40 μ M within a millisecond 15 nm distant from the channel pore [85].

LVA channels encompass the family of T-type calcium channels [97]. These channels are comprised of just a Cav α 1 subunit and thus unlike HVA channels do not require assembly with ancillary subunits to replicate native currents. The Cav3 α 1 subunit is comprised of four major transmembrane domains that are connected by large cytoplasmic linker regions [97] (Fig. 1a). N- and C-termini are also located on the cytoplasmic side, with sequence variation in the C-terminus or internal linkers being a characteristic delimiter between the

Cav3 channel isoforms. All three members of this family (Cav3.1, Cav3.2, and Cav3.3) share a small single channel conductance, rapid activation and inactivation kinetics, and relatively slow deactivation, the latter giving rise to more prolonged calcium influx through tail currents [84]. Furthermore, due to their specific voltage dependencies of activation and inactivation, Cav3 channels give rise to a window current that allows these channels to be tonically active at typical neuronal resting membrane potentials [21, 25, 29, 31, 33, 34, 51]. The voltage range for window current varies between cells but can be anywhere from -90 to $+20$ mV [31, 33, 34, 118, 121]. The fact that these channels can be tonically active at rest allows them to contribute to functions that range from low threshold exocytosis [136, 137] to spike-activated inward current [118]. Because Cav3 channels are partially inactivated at rest, a membrane hyperpolarization can recover channels from inactivation, giving rise to larger T-type currents during a subsequent depolarization that can directly regulate neuronal firing properties [7, 25, 33, 51, 81, 142]. As we will discuss in this review, Cav3 channels also prove to act as the source of calcium for several different types of potassium channels, thereby supporting an indirect but important means of regulating neuronal firing behavior that was only recently recognized.

Calcium-gated potassium channels

KCa1.1 and KCa2.x potassium channels have been traditionally recognized as those gated by calcium entry to control membrane excitability in central neurons [1, 12, 129, 135]. The properties of KCa1.1 and KCa2.x channels differ in key respects that support fine-tuned roles in mediating spike repolarization and afterhyperpolarizations (AHPs) over relatively short time frames of activity [1, 66, 67, 85, 116, 123, 133]. All three KCa2.x channel isoforms (KCa2.1–3; SK1–3; KCNN1–3) [1, 12, 135] are purely calcium dependent due to the association of calmodulin with the C-terminal region [1, 57, 58, 63, 141]. While Cav3 calcium channels have been shown to at least functionally couple to KCa2.x channels [26, 138], we will not focus on this given the lack of protein biochemical evidence for a potential ion channel complex at this time.

KCa1.1

KCa1.1 channels are similar to voltage-gated potassium channels in activating in response to membrane depolarization; however, the voltage dependence of activation is strongly regulated by cytosolic free calcium concentration [28]. KCa1.1 channels are formed by the association of four identical pore forming α -subunits plus ancillary β -subunits which coassemble with the α -subunit in a 1:1 fashion. The α -subunit

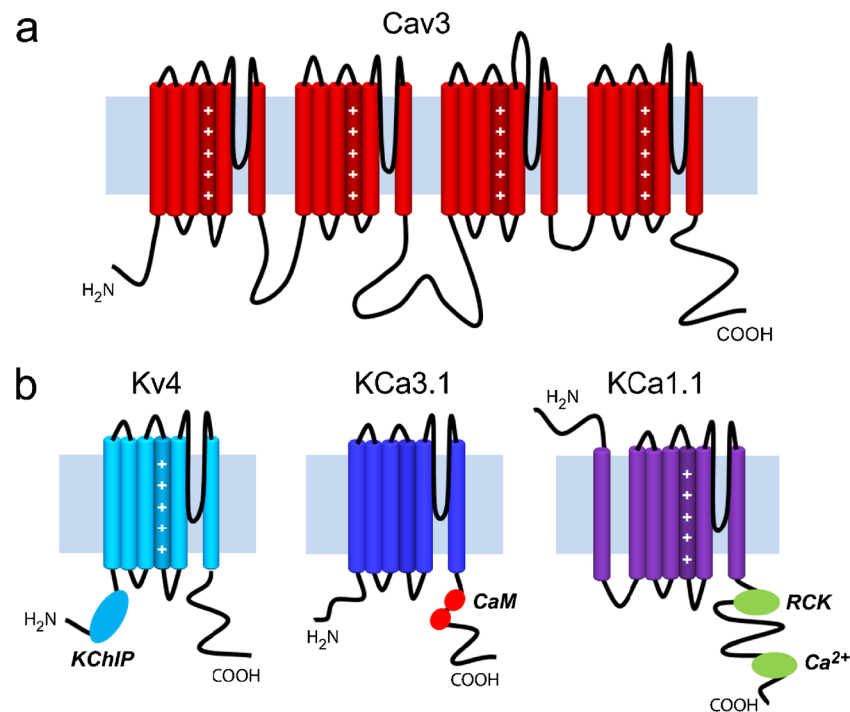


Fig. 1 Transmembrane topology of the Cav3 $\alpha 1$ subunit and the three types of potassium channel subunits discussed in this review. **a** Cav3 channels are comprised of four homologous transmembrane domains that are connected via large cytoplasmic linkers. Each of these domains contains six-membrane spanning helices plus a re-entrant pore loop. Voltage sensors are formed by positive charges on the fourth transmembrane helix in each domain. **b** Potassium channel subtypes recognized to form ion signaling complexes with Cav3 calcium channels. Kv4 channels are similar to a single domain of Cav3 channels, and four of these

combine to form a functional channel. KCHIP molecules attached to the N-terminus region act as calcium sensors. KCa3.1 channels are similar in structure to Kv4 channels but lack voltage sensors. They are purely activated by calcium via interactions with calmodulin (*CaM*) on the channel C-terminus. Finally, KCa1.1 channels show a slightly different membrane topology, with an additional transmembrane helix that places the N-terminus at the extracellular end of the protein. Calcium is sensed by RCK domains and a calcium bowl located on the C-terminus region of the channel

contains seven membrane spanning helices (S0 to S6), with an extracellular N-terminus and an intracellular C-terminus [28] (Fig. 1b). The C-terminus contains a “regulating conductance of potassium” (RCK) domain and a calcium bowl to confer calcium sensitivity onto KCa1.1 channel activation [32, 43, 46, 82, 102, 111]. The affinity of the calcium binding site on KCa1.1 channels is substantially lower than that of calmodulin associated with KCa2.x and KCa3.1 channels, with reported minimal intracellular calcium concentrations necessary for activation ranging from 1 to $>10 \mu\text{M}$ [12, 85, 123]. As a result KCa1.1 channels are typically activated by relatively large voltage responses such as spike discharge, thereby contributing to spike repolarization and a fast AHP (fAHP) [85, 115, 139]. Previous studies have shown that KCa1.1 channels can form signaling complexes with HVA channels, thereby localizing the channels close to the source of calcium entry [10, 11, 45, 85], but the underlying channel structural determinants are unknown. Indeed, all of Cav1.2 (L), Cav2.1 (P), and Cav2.2 (N) channels can form what were proposed as supercomplexes with KCa1.1 channels, although not with the Cav2.3 calcium channel isoform [10, 12]. The functional importance of this interaction has been repeatedly established, such that blockade of HVA calcium channels (and hence, indirectly, the activity

of KCa1.1 channels) in neurons results in drastic alterations of intrinsic neuronal firing properties [109, 112, 115, 117, 139]. New data summarized below now indicates that LVA Cav3 calcium current also has an important role in activating KCa1.1-mediated outward current.

KCa3.1

KCa3.1 channels are a third class of calcium-gated potassium channel that belong to the same gene family as KCa2.x channels but share only ~45 % protein sequence homology [52, 57, 72, 135]. KCa3.1 channels are also only calcium dependent through the association with calmodulin [37, 40, 52, 57, 72, 96, 105, 106, 113] but activate and deactivate over a much longer time frame (up to seconds) than KCa1.1 or KCa2.x channels [50, 68, 69, 126]. KCa3.1 channels are derived from a single gene (KCNN4) with virtually all KCa3.1 channels sequenced from various body tissues (i.e., pancreas, placenta, lymphocytes) sharing an equivalent sequence [52, 57, 72]. KCa3.1 channels have a six-transmembrane domain structure and intracellular N- and C-termini (Fig. 1b). The proximal C-terminus contains a

constitutive binding site for calmodulin [58] with an IC_{50} for calcium from 95 to 300 nM compared to ~300–500 nM for $KCa_{2.x}$ channels [1, 57], making $KCa_{3.1}$ channels potentially more sensitive to changes in internal calcium concentration.

The expression pattern and properties of $KCa_{3.1}$ channels have been extensively examined outside the CNS, where $KCa_{3.1}$ channels are expressed in red blood cells [41], endo- and epithelial cells [8, 39, 48, 119, 130, 132], lymphocytes [42, 61], and glia [19, 60, 61, 71]. The function of $KCa_{3.1}$ channels in controlling neuronal excitability has been best characterized in enteric neurons, where $KCa_{3.1}$ channels generate a slow AHP (sAHP) of seconds duration [91, 92, 128]. However, in central regions, $KCa_{3.1}$ channels were not believed to be expressed in neurons [52, 53, 72] but instead were restricted to endothelial cells and activated glia [9, 53, 124, 140]. Nevertheless, reports suggesting the expression of $KCa_{3.1}$ channels in more central neurons exist, with molecular, immunocytochemical, or electrophysiological data reported in sensory cells of peripheral and autonomic nervous systems [39, 83, 90, 92, 127] as well as motor neurons [13, 83]. Most recently, $KCa_{3.1}$ channel expression in a central neuron was established for the first time in cerebellar Purkinje cells [34], raising questions as to how widespread $KCa_{3.1}$ channel expression may be in other central regions. Moreover, the first study examining $KCa_{3.1}$ channels in Purkinje cells revealed the presence of a Cav3- $KCa_{3.1}$ complex with important functional roles [34].

Voltage-gated A-type potassium channels

Among the myriad of voltage-gated potassium channels are a small subset of channels that are activated from a low membrane voltage and in a transient fashion to trigger “A-type” currents. In central regions, A-type potassium currents are often generated by members of the $Kv4$ channel family ($Kv4.1$ – 4.3 ; $KCND1$ – 3) [54, 108]. As found for Cav3 calcium channels, $Kv4$ channels exhibit a low voltage for activation, fast inactivation, near-complete inactivation at resting potential, and an availability that is governed by preceding membrane hyperpolarizations [54]. $Kv4$ channels share the common structure of potassium channels in being comprised of four α -subunits containing six transmembrane domains, an S4 voltage-sensing domain, and intracellular C- and N-termini (Fig. 1b). All structural indices then suggest that $Kv4$ channels belong entirely to the class of voltage-gated channels. However, reports as early as the 1980s began to suggest that A-type potassium channels may also be regulated by calcium influx, although the mechanism was never resolved [14, 18, 74, 107, 143]. $Kv4$ channels were subsequently found to link to “potassium channel interacting proteins” (KChIP1–4; Fig. 1b), a class of calcium sensor molecules that affect channel translocation and kinetic properties [3, 15, 62, 94,

98, 104, 110, 131]. A second auxiliary subunit termed dipeptidyl peptidase-like proteins (DPPs) was identified as membrane spanning proteins that directly interact with the $Kv4$ α -subunit [30, 38, 54, 56, 59, 87, 88, 99, 103]. While DPPs also exert important effects on baseline properties of $Kv4$ channels, there is no evidence to date for a role in mediating calcium-dependent effects. The combination of $Kv4$ α -subunits together with KChIP and DPP proteins together is now recognized as comprising the “ $Kv4$ complex” [22, 24, 55, 59, 75, 86].

The presence of KChIP molecules as part of the $Kv4$ complex signifies the presence of a very different form of calcium sensor than those inherent to $KCa_{3.1}$ or $KCa_{1.1}$ channels. Here, four KChIP molecules bind to the $Kv4$ α -subunit N-termini to form a “cross-shaped octomer” on the cytoplasmic side to bind calcium [98, 131]. KChIPs1–4 are derived from separate genes and belong to the larger family of calcium sensor proteins that contain four EF-hand domains on the C-terminus [15, 73]. EF-1 does not bind calcium and EF-2 is bound to magnesium, leaving EF-3 and EF-4 as potential calcium binding sites. The dissociation constant for calcium binding to EF-3 and EF-4 is 5 μ M [95] and therefore midrange in sensitivity to $[Ca]_i$ from that of calmodulin (<300 nM) or $KCa_{1.1}$ RCK domains (1–10 μ M). Although KChIP proteins were identified as a mechanism to provide calcium-dependent regulation of $Kv4$ current, the effects of calcium influx on KChIPs and $Kv4$ current were not subsequently reported. The potential source of calcium that might activate KChIPs also remained unknown. As elaborated below, recent work reveals that Cav3 calcium channels selectively associate with the $Kv4$ complex to modulate A-type current in a KChIP3-dependent manner [4, 5].

Cav3 interactions with potassium channels

Cav3.2- $KCa_{3.1}$ complex

A recent study on the ionic basis for a sAHP that follows parallel fiber-evoked excitatory postsynaptic potentials (EPSPs) in rat cerebellar Purkinje cells came to the conclusion that $KCa_{3.1}$ channels were in fact expressed in these cells and activated by forming a complex with Cav3.2 calcium channels [34]. Thus, dual immunocytochemistry revealed $KCa_{3.1}$ in the somatic region of Purkinje cells and on isolated segments of primary dendrites of these cells (Fig. 2a–c). Moreover, $KCa_{3.1}$ immunolabel was strongly colocalized with that of Cav3.2 in both somatic and dendritic locations (Fig. 2c). The validity of the immunolabel was supported by RT-PCR in which $KCa_{3.1}$ signal was detected on Western blots from lysates of whole cerebellum as well as cytoplasmic extracts obtained through whole-cell patch recordings in vitro to conduct single-cell RT-PCR (Fig. 2d). Important controls

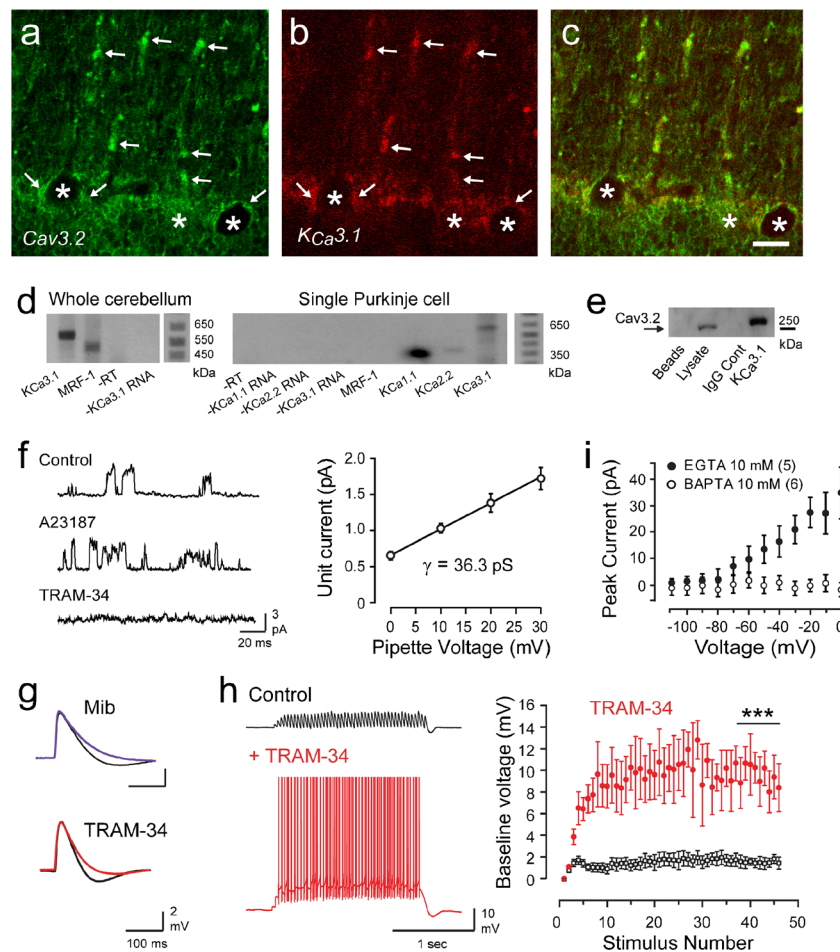


Fig. 2 Cav3 calcium channels associate with KCa3.1 channels to regulate temporal summation of EPSPs. **a–c** Dual-label immunocytochemistry for Cav3.2 (**a**) and KCa3.1 (**b**) reveals protein colocalized (arrows) at the soma (asterisks) and restricted segments of dendrites (**c**). **d** RT-PCR reveals KCa3.1 and MRF-1 mRNA in the whole cerebellum (left) and KCa1.1, KCa2.2, and KCa3.1 but not MRF-1 in single Purkinje cell cytoplasmic extracts (right). **e** KCa3.1 protein coimmunoprecipitates with Cav3.2 from rat cerebellar lysate. **f** On-cell channel recordings (+30-mV pipette potential) before and after perfusing the calcium ionophore A23187 (2 μ M) and blocked by TRAM-34 (100 nM). Plot of mean single channel amplitudes at steady-state potentials up to +30 mV reveals

a mean conductance of 36.3 pS ($n=5$). **g** Injection of simEPSCs in Purkinje cells reveals that the simEPSP rate of decay is reduced by mibefradil (1 μ M) and TRAM-34 (100 nM). **h** Recordings and plots of the baseline membrane voltage during 25-Hz trains of parallel fiber-evoked EPSPs and TRAM-34 perfusion show that IKCa channels suppress temporal summation of EPSPs and repetitive spike output. **i** Mean values of TRAM-sensitive current in outside-out patches reveal a block of the Cav3-IKCa interaction with internal BAPTA but not EGTA. Scale bar in (**a–c**) 20 μ m. Mean \pm SEM; *** $p < 0.001$. Abbreviation: Mib mibefradil. Modified from [34]

included the detection of bands for KCa1.1 and KCa 2.2, but not for microglial response factor-1 (MRF-1), a specific marker for microglia, thus confirming that the cytoplasmic sample did not include IKCa3.1 mRNA from nearby microglia. KCa3.1 protein proved to coimmunoprecipitate with Cav3.2 from rat cerebellar lysate, again indicating a close association between these two channels (Fig. 2e). The presence of intermediate conductance potassium channels was confirmed through on-cell single channel recordings from Purkinje cell somata (Fig. 2f). Subsequent addition of the calcium ionophore A23187 greatly increased the open probability of the single channels, which were blocked by perfusion of TRAM-34, a lipophilic compound that enters the cell to block the channel at a site near the inner pore (Fig. 2f). Measuring unit

current amplitude over a series of on-cell pipette voltage steps revealed that the single channel conductance was ~ 36 pS, a value consistent with that previously reported for KCa3.1 channels (Fig. 2f) [52].

The physiological role for KCa3.1 channels became apparent when simulated EPSCs (simEPSCs) were used to evoke simulated EPSPs (simEPSPs) at the level of Purkinje cell somata to test the role of postsynaptic ion channels in generating a synaptic response [34]. Applying either mibefradil to block Cav3 calcium entry or TRAM-34 to block KCa3.1 channels produced an equivalent block of the decay phase of the simEPSP in Purkinje cells (Fig. 2g). By comparison, none of the established blockers for HVA calcium channels, KCa2.x channels, or KCa1.1 channels could reproduce these

effects. When a train of subthreshold simEPSPs was applied at 25 Hz, it was found that temporal summation of EPSPs was strongly suppressed beyond the first four to five stimuli but that consistent and continual spike discharge was evoked when TRAM-34 was applied to block KCa3.1 channels (Fig. 2h). Importantly, TRAM-34 was also effective in the presence of picrotoxin used to block feedforward inhibitory projections activated by parallel fibers [79], indicating that both systems serve to regulate EPSP summation. KCa3.1 channel activation by Cav3 calcium influx could thus be traced to suppressing the baseline EPSP-membrane voltage response during repetitive synaptic input, acting as a high-pass filter to suppress background parallel fiber synaptic activity under normal conditions.

The link between Cav3.2 calcium influx and KCa3.1 activation was all supported by the close association indicated through coimmunoprecipitation and immunocytochemistry. To further assess the distance between the two channels in the complex, we employed the use of the two calcium chelator EGTA and BAPTA. Here, it was shown in outside-out patch recordings that TRAM-34-sensitive outward current was present when 10 mM EGTA was included in the electrode but not in the presence of 10 mM BAPTA (Fig. 2i). This was important in establishing that the Cav3-KCa 3.1 complex functions at the level of a calcium nanodomain or <50-nm distance [36]. The exact sites that form a link between Cav3.2 and KCa3.1 have not yet been identified nor has the degree to which these findings extend to Cav3.1 or Cav3.3. Yet taken together, these data argue strongly for the first nanodomain interaction between Cav3 calcium channels and a calcium-activated potassium channel.

Cav3.2-KCa1.1 complex

A second interaction between Cav3 channels and a calcium-activated potassium channel was recently reported for KCa1.1 channels [101]. Here, the relationship between Cav3 calcium influx was examined through expression of cDNAs in tsA-201 cells and in cells of the rat medial vestibular nucleus (MVN) maintained as an *in vitro* slice preparation. Coexpressing cDNAs for human Cav3.2 and KCa1.1 in tsA-201 cells revealed that while a voltage command pulse delivered from a value of -100 to $+40$ mV did not reliably activate KCa1.1 current, preceding this pulse with a step to -30 mV to maximally activate Cav3 current augmented KCa1.1 current (Fig. 3a). The mechanism for KCa1.1 activation was apparent in *I-V* plots where a Cav3 calcium prepulse left-shifted the voltage dependence for KCa1.1 activation, a result expected due to the interplay between calcium- and voltage-gated activation of KCa1.1 channels. Corroboration of the role for Cav3-mediated calcium influx was obtained when expressing KCa1.1 cDNA with a Cav3.2 pore mutant that does not conduct calcium (Cav3.2pm) prevented the leftward shift in

KCa1.1 voltage for activation (Fig. 3a). Notably, the Cav3-mediated effect proved to be sensitive to block not only by internal perfusion of BAPTA but also by as little as 5 mM EGTA (Fig. 3b), the implications of which are discussed further below.

Protein biochemical tests revealed that Cav3.2 channels coimmunoprecipitate with KCa1.1 from lysates of either the brain or cerebellum (Fig. 3c) and from lysates of tsA-201 cells expressing only the channel α -subunits (Fig. 3d). Further tests for coimmunoprecipitation between Cav3.2 and different KCa1.1 mutant channels further narrowed down the site for interaction. Thus, Cav3.2 channels coimmunoprecipitated with a mutant construct comprised of only the KCa1.1 N-terminus and S0 transmembrane segment (N+S0), with a naturally occurring truncated N-terminal variant with S0 (aN+S0), but not with a construct comprised of only the longer N-terminus (Fig. 3d). These data strongly implicate a site of interaction between Cav3.2 and the transmembrane S0 segment.

Previous work had reported at least a functional coupling between Ni^{2+} -sensitive calcium influx and KCa1.1 in MVN cells [111]. However, direct biophysical tests of the nature of this activation had not been reported. We used whole-cell voltage clamp of MVN cells *in vitro* to examine KCa1.1 current isolated by either paxilline (1 μM) or TEA (1 mM) application and compared these to outward currents isolated by perfusing the Cav3 blockers mibefradil (1 μM) or Ni^{2+} (300 μM) (Fig. 3e) [101]. In each case the isolated current was fast activating and slowly inactivating over the time of a 200-ms step command to $+40$ mV (Fig. 3e). Using a ramp command over a -100 to -30 mV range with paxilline or mibefradil treatment further revealed LVA outward current that activated just subsequent to LVA inward calcium current, indicating that Cav3 calcium influx can activate KCa1.1 above ~ -70 mV (Fig. 3f). Finally, applying mibefradil to MVN cells under current clamp slowed spike repolarization, reduced a subsequent fAHP (Fig. 3g), and increased the gain of firing, revealing that the Cav3-KCa1.1 interaction normally reduces spike output in MVN cells. These data were entirely novel in identifying a new association between Cav3 and KCa1.1 channels in an ion channel complex, helping account for earlier reports of the role for KCa1.1 in controlling gain in MVN cells [89, 111].

Cav3-Kv4 complex

A series of recent studies on stellate cell interneurons in the cerebellum led to a new understanding of how Cav3 channels can interact with even voltage-gated potassium channels. Earlier work on the expression pattern of Cav3 channel isoforms in these cells [77] led to the finding that membrane hyperpolarizations expected to promote a rebound increase in firing frequency instead promoted a unique voltage-dependent

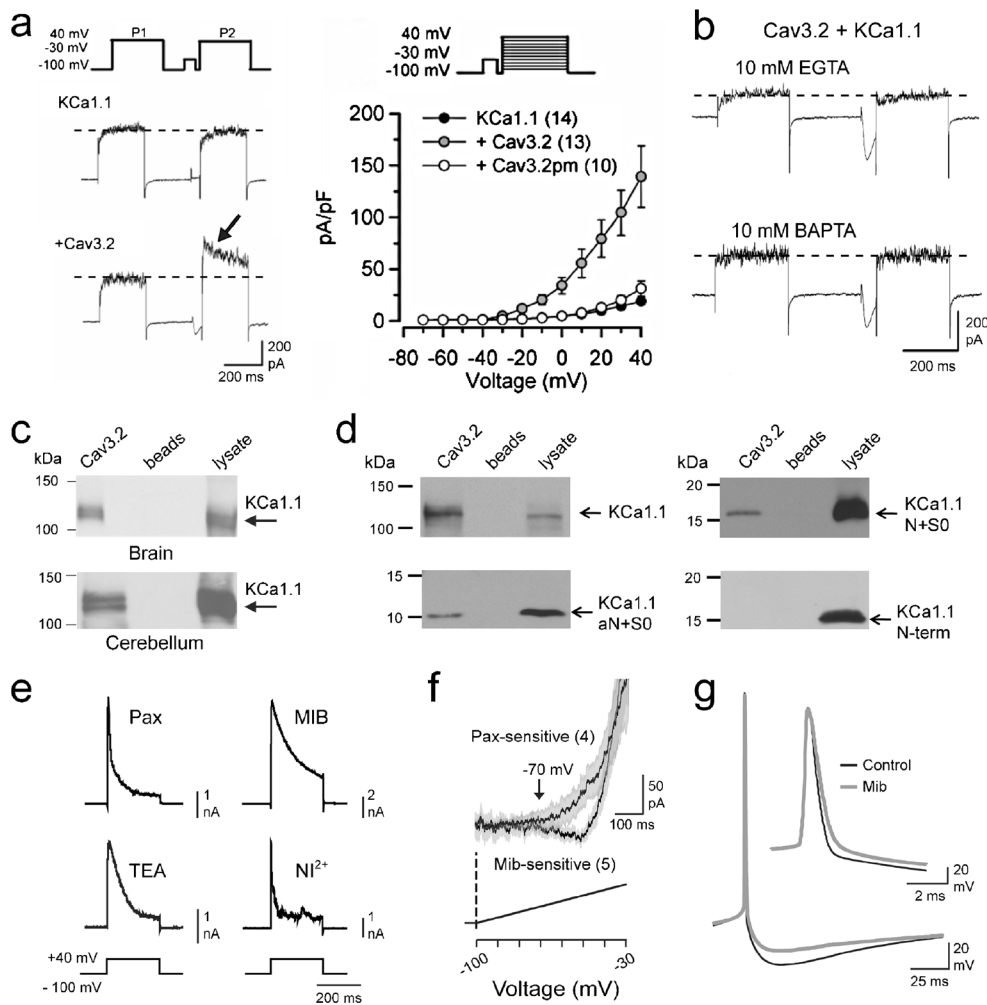


Fig. 3 A Cav3.2-KCa1.1 channel complex generates a LVA KCa1.1 current involved in spike repolarization and a fAHP. **a** Whole-cell patch recordings from tsA-201 cells expressing KCa1.1 and/or Cav3.2 cDNA reveal that Cav3.2 calcium influx triggered by a prepulse command augments KCa1.1 current (*arrow*). Steps: 250 ms, +40 mV; prepulse 50 ms, -30 mV, return 2 ms. Plots of mean current for KCa1.1 expressed alone, with Cav3.2, or a noncalcium-conducting Cav3.2 pore mutant (Cav3.2pm). **b** KCa1.1 current augmentation by Cav3 calcium influx during a step prepulse in tsA-201 cells is blocked by internal EGTA or BAPTA. **c** Cav3.2 and KCa1.1 proteins coimmunoprecipitate from lysates of the rat brain or cerebellum. **d** Lysates from tsA-201 cells reveal

that Cav3.2 coimmunoprecipitates with full-length KCa1.1, N+S0, and aN+S0, but not the KCa1.1 N-terminus expressed in isolation. Western blots reflect myc-tagged KCa1.1 channels or their fragments. **e** Whole-cell currents in MVN cells isolated as paxilline (1 μ M)- or TEA (1 mM)-sensitive KCa1.1 current compared to currents isolated as mibefradil (1 μ M)- or Ni^{2+} (300 μ M)-sensitive (Cav3-activated) currents. **f** Average plots of currents in MVN cells isolated by either paxilline (1 μ M) or mibefradil (1 μ M) during ramp commands (SEM values shaded). **g** Mibefradil (1 μ M) slows spike repolarization and reduces the fAHP in a MVN cell. Mean \pm SEM. *Abbreviations:* *Mib* mibefradil, *pax* paxilline. Modified from [101]

shift in first spike latency [80]. As ionic control of first spike latency has traditionally been assigned to A-type potassium channels, it prompted further investigation into how Cav3 channels might influence this important aspect of spike firing dynamics. It was finally concluded that the coexpression of Cav3 and Kv4 channels led to a non-monotonic profile in the voltage-first spike latency profile, with Cav3 calcium influx reducing latency from more hyperpolarized potentials, and Kv4 current increasing spike latency from membrane potentials near rest [80]. However, there was a curious peak in the voltage-latency profile near resting membrane potential that proved to be sensitive to Cav3 channel blockers, implying that Cav3 and Kv4 channels may establish first spike latency

characteristics by interacting at a level beyond simple coexpression in the membrane.

Further studies on this potential interaction departed from the standard procedure of blocking all calcium influx when isolating potassium channels and found that under conditions of blocking sodium and HCN channels, the prominent current recorded was a transient Kv4 A-type response (Fig. 4a) [4]. However, blocking Cav3 calcium influx with mibefradil (0.5 μ M) revealed a select leftward shift in the voltage-inactivation profile for Kv4 current (V_h) without any effect on the voltage for activation (Fig. 4b). Importantly, these effects were not due to direct effects on the channel, as no such influence was detected on Kv4 channels expressed in

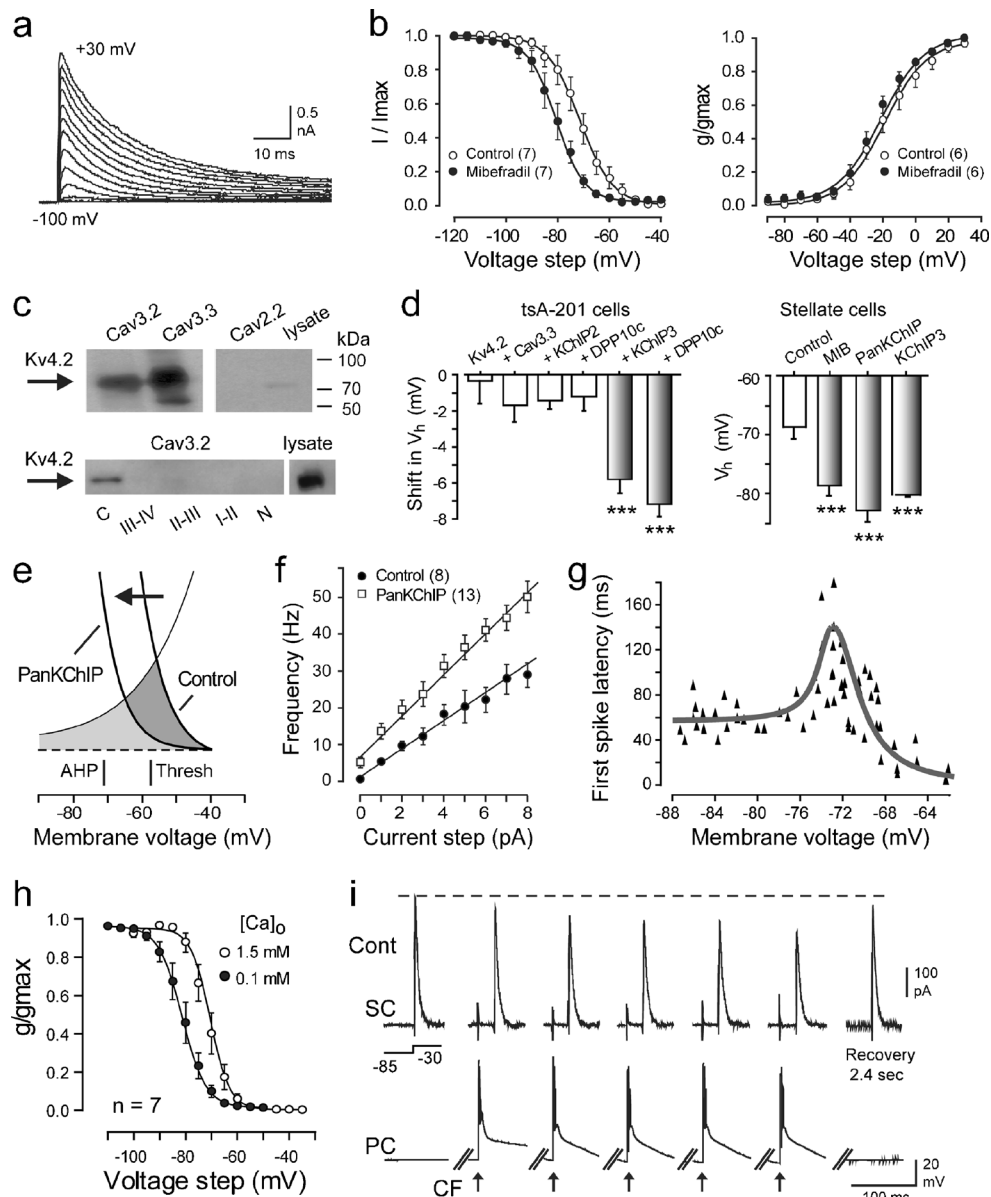


Fig. 4 A Cav3-Kv4 complex in stellate cells regulates I_A availability near rest and acts as an extracellular calcium sensor. **a** Whole-cell voltage clamp of I_A in cerebellar stellate cells in the absence of calcium channel blockers. **b** Blocking Cav3 calcium influx with mibefradil ($0.5 \mu\text{M}$) selectively left-shifts the voltage-inactivation plot (V_h) ~ -10 mV without affecting voltage for activation. **c** Kv4.2 channel coimmunoprecipitates with Cav3.2 or Cav3.3 protein but not Cav2.2 from rat brain lysate (*top row*) and pulls down with the C-terminus of Cav3 GST fusion proteins (*bottom row*). **d** Coexpressing different Kv4 complex members in tsA-201 cells reveals a critical role for KChIP3 in mediating a mibefradil-induced shift in Kv4 V_h (*left*). Internal perfusion of PanKChIP or KChIP3 antibodies into stellate cells selectively disrupts the Cav3-Kv4 complex function to induce the same shift in V_h as mibefradil (*right*). **e** Magnified

view of the foot of Kv4 activation and inactivation plots indicating that a leftward shift in V_h (*arrow*) by dialyzing a PanKChIP antibody reduces window current in the region of spike threshold. **f**, **g** Plots showing the role of the Cav3-Kv4 complex in normally reducing firing rate gain (**f**) and increasing first spike latency near resting potential (**g**) in stellate cells in response to current pulse injections. Dependence of the Cav3-Kv4 complex function on calcium influx enables sensitivity to decreases in $[\text{Ca}]_o$. Test pulse -30 mV. **i** Dual recordings of I_A in a cerebellar stellate cell and complex spike discharge in a Purkinje cell directly below the stellate cell recording. Repetitive 10-Hz CF stimulation and complex spike discharge is associated with a decrease in I_A (*dashed line*). Mean \pm SEM; *Abbreviations*: *Thresh* threshold, *SC* stellate cell, *PC* Purkinje cell, *CF* climbing fiber. $***p < 0.001$. Modified from [4, 6, 80]

isolation in tsA-201 cells. Protein biochemical studies on Cav3.2 and Cav3.3 channel isoforms (those inherently expressed in stellate cells) further established that Cav3 (but not Cav2.2) proteins coimmunoprecipitated with Kv4.2 from

brain lysates (Fig. 4c). Moreover, Kv4.2 channels selectively pulled down with the C-terminal region of Cav3.2 or Cav3.3 channels among a set of glutathione *S*-transferase (GST) fusion proteins of each of the internal Cav3 channel linkers and

C- and N-termini expressed in tsA-201 cells (Fig. 4c). These results are important in establishing that Kv4.2 channels form a direct molecular association with the C-terminal region of Cav3 channels. In fact, subsequent work established that this link can be detected between all Kv4 isoforms and all Cav3 channel isoforms [5]. In further characterizing the basis for Cav3-Kv4 function, different combinations of Kv4 complex subunits were expressed in tsA-201 cells to identify the minimal complement necessary to reproduce a mibefradil-induced shift in Kv4 V_h . This work showed that expressing a Cav3 and Kv4 channel isoform is necessary but that the KChIP3 isoform is necessary and sufficient as an accessory protein to account for calcium-dependent regulation of Kv4 V_h (Fig. 4d) [4]. By comparison, none of the HVA calcium channels (P/Q-, N-, L-, or R-type) or other KChIP isoforms were able to modulate Kv4 current when tested in tsA-201 cells. These data are important in showing that only the Cav3 calcium channel can associate with the Kv4 channel complex to confer calcium-dependent control through the specific calcium sensing action of KChIP3.

A series of studies established that infusing either a KChIP3 or PanKChIP antibody through the electrode (1:100 dilution) during stellate cell recordings mimicked the effects of applying mibefradil in left-shifting Kv4 V_h (Fig. 4d), providing the first means of interfering with Cav3-Kv4 complex function. With this tool in hand, one could test the functional role of a Cav3-Kv4 complex, with antibody infusion revealing that a Cav3 calcium-mediated rightward shift in the voltage-inactivation profile ordinarily acts to increase Kv4 window current in the region of spike threshold (Fig. 4e). As a result, the Cav3-Kv4 complex reduces cell excitability, as measured by a significant drop in firing rate gain (Fig. 4f) [4]. A Cav3-mediated increase in Kv4 window current near rest also accounted for the increase in the voltage-first spike latency relationship that was identified in stellate cells near resting potentials (Fig. 4g) [80]. While repetitive stimulation to increase internal calcium concentration is without apparent effect on Kv4 availability, the Cav3-Kv4 complex proves to be highly sensitive to decreases in extracellular calcium levels (Fig. 4h) [6]. This is important because it has been established that physiological rates of excitatory afferent input to the cerebellum rapidly decrease extracellular calcium concentration in the order of 30 % from resting values [49, 93, 114]. We thus used dual recordings between a Purkinje cell and a stellate cell directly above in the molecular layer to assess the effects of climbing fiber stimulation on I_A and I_T [6]. As shown in Fig. 4i, I_A was isolated pharmacologically while recording from a Purkinje cell under current clamp to monitor complex spike discharge. Repetitive complex spike discharge at 10 Hz rapidly decreased I_A amplitude, with full recovery within 2–3 s after the end of a stimulus train. Similarly, climbing fiber stimulation decreased I_T in stellate cells during a stimulus train, with even faster kinetics of recovery (data not

shown). Since the decrease in I_A availability increased the firing rate gain of stellate cells, it was found that the Cav3-Kv4 complex functions to provide adaptive inhibitory control over Purkinje cells in the face of excitatory afferent-induced reductions in extracellular calcium [6]. These findings were key in establishing that expression of the Cav3-Kv4 complex in stellate cells ultimately underlies a new form of homeostatic control over circuit function [6].

Microdomain versus nanodomain interactions

Given widely different calcium sensors and potassium channels involved in these ion channel complexes, it is interesting to compare the relative efficacy of Cav3 calcium channels to effect potassium channel activation. Previous work has shown that calcium influx gives rise to a domain of decreasing internal calcium surrounding the internal pore of the channel. The distance over which calcium influx can trigger a calcium-dependent event is distinguished by those functioning at the level of a calcium microdomain (50–200-nm distance) or a nanodomain (<50 nm) [36]. It is known that interactions between the HVA calcium channels Cav2.1 or Cav2.2 and KCa1.1 in an expression system occur at the level of a nanodomain [11]. The ability for HVA calcium influx to activate KCa1.1 is such that even the voltage dependence and kinetics of either calcium channel subtype is imparted upon KCa1.1 activation. Given that all of the complexes reviewed here share Cav3 channels as a common partner, key factors that could be predicted to control the degree of potassium channel activation would be (1) the relative proximity of calcium and potassium channels, (2) the sensitivity of the calcium sensors to changes in internal calcium, and (3) the relative conductance of Cav3 calcium channels. The latter is of particular interest given that Cav3 channels have a much lower conductance than HVA calcium channels and exhibit rapid inactivation that will substantially reduce the time for internal calcium accumulation.

The ability to coimmunoprecipitate Cav3 channels and either KCa3.1 or Kv4 channels is consistent with the physical requirements expected for a nanodomain interaction. In both cases the calcium-induced change in potassium channel function is prevented by internal perfusion of BAPTA but not EGTA. Moreover, the voltage-dependent and kinetic properties of Cav3-mediated calcium influx are transferred to KCa3.1 channels to produce a LVA transient outward current [34]. The potential conveyance of Cav3 voltage-dependent properties on Kv4 channels is less readily discerned given the similarities between these two channels in this parameter. However, the ability for calcium to modify the voltage-inactivation profile of Kv4 channels signifies the ability for the complex to convert a voltage-gated Kv4 channel to one that is dependent on calcium influx. In fact, without Cav3

calcium influx, the leftward shift in Kv4 V_h would substantially increase Kv4 inactivation at resting membrane potentials. Together, these data support the conclusion that Cav3 channels are positioned sufficiently close to KCa3.1 or Kv4 channels, and the sensitivity of calmodulin and KChIP3 as calcium sensors is sufficiently high to support a nanodomain interaction even with the relatively low conductance of Cav3 channels (Fig. 5a, b). Interestingly, the Cav3-Kv4 complex proves to be so highly sensitive to Cav3 calcium conductance that even subtle reductions in extracellular calcium during physiologically relevant input signals reduce I_A availability [6]. However, this sensitivity is valuable in allowing the complex to act as a novel sensor for extracellular calcium to modify stellate cell output in an adaptive manner.

In the case of KCa1.1 channels, the situation is less clear. On the one hand, coimmunoprecipitation data indicate that Cav3 and KCa1.1 channels are part of a macromolecular signaling complex that places KCa1.1 channels close to the source of Cav3 calcium entry. But Cav3-mediated activation of KCa1.1 is less reliable in being blocked by as little as 5 mM internal EGTA in both tsA-201 and MVN cells. Activating KCa1.1 in tsA-201 cells further required an initial prepulse command to -30 mV to maximally activate Cav3 current. Once sufficient activation of KCa1.1 was achieved, Cav3 calcium influx left-shifted the voltage dependence of

KCa1.1 activation, with additional evidence for voltage-dependent inactivation of KCa1.1, as expected for steady-state inactivation properties of Cav3 channels. These data are perplexing in presenting a calcium-dependent activation process more reminiscent of a microdomain interaction. However, this implies a distance between the channels of 50–200 nm, which is greater than what one expects from a direct molecular interaction. In contrast, it has been shown that physical signaling complexes between N-type calcium channels and KCa1.1 channels allow a functional interaction at the level of a nanodomain (Fig. 5c). The key difference from Cav3 channels is a much larger open probability and single channel conductance of N-type channels, such that each channel is sufficient to provide the calcium levels needed for KCa1.1 activation [134].

Lessons learned from studying calmodulin regulation of calcium-dependent inactivation (CDI) of HVA channels can be used to explain this apparent discrepancy. For both L-type and P/Q-type channels, calmodulin is preassociated with the calcium channel. A rise in intracellular calcium results in calcium binding to calmodulin, thereby triggering a rearrangement of the channel-calmodulin complex to cause CDI [35]. Calmodulin has two high-affinity and two low-affinity binding sites for calcium. CDI of L-type channels is dependent on the high-affinity calcium binding lobes, whereas that of P/Q-

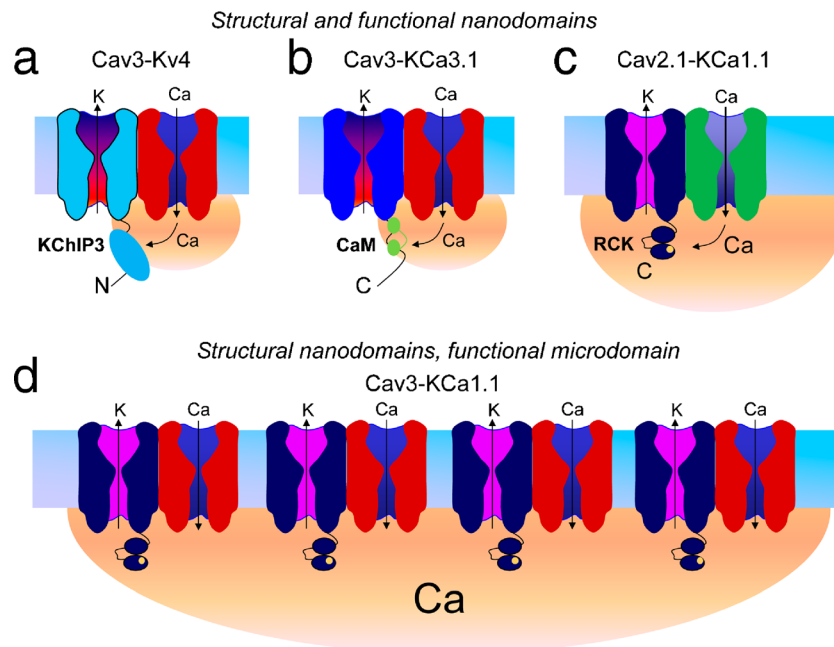


Fig. 5 Interactions between calcium channels and potassium channels. Shaded regions (orange) represent the size of calcium domains. **a** Cav3 channels physically associate with Kv4 channels, placing the Kv4 channel and its associated KChIP3 accessory protein within a calcium nanodomain formed by calcium entering through the pore of an individual Cav3 channel. **b** Similarly, KCa3.1 channels associated with a Cav3 channel are placed within this nanodomain, and the high calcium affinity of calmodulin ensures that KCa3.1 channels can be gated by an individual Cav3 channel. **c** KCa1.1

channels require a higher calcium concentration for activation. In the case of N-type channels, the higher open probability and greater single channel conductance than Cav3 channels is sufficient to activate an associated KCa1.1 channel. **d** In contrast, individual Cav3 channels do not provide sufficient calcium to activate KCa1.1 channels, instead requiring the concerted action of multiple Cav3-KCa1.1 complexes to raise calcium to sufficiently high levels to permit KCa1.1 activation, accounting for the EGTA sensitivity of this process despite the physical association of the channels

type channels relies on the low-affinity binding sites. Therefore, calcium entry via an individual L-type channel is sufficient to raise calcium concentrations near the high-affinity sites on calmodulin to trigger CDI, making this resistant to internal EGTA [70]. The situation is different with P/Q-type channels, where the lower affinity of calmodulin for calcium requires a much larger rise in intracellular calcium for CDI to occur. Importantly, this rise in calcium cannot be supported by an individual channel but rather requires the concerted action of many channels [70]. Thus, despite the fact that each channel is already associated with a calmodulin molecule, CDI of P/Q-type channels is EGTA sensitive.

We hypothesize that apparent incongruencies in data showing a Cav3-KCa1.1 macromolecular complex that functions at the level of a microdomain parallel what is observed with CDI of P/Q-type channels. Much like the low-affinity calcium binding site on calmodulin, the calcium binding site on KCa1.1 channels has a low affinity for calcium. Therefore, calcium entry through a single Cav3 calcium channel is insufficient to activate KCa1.1 even though the two proteins are in close proximity. However, a concerted entry of calcium through multiple Cav3-KCa1.1 complexes is proposed to support a global rise in calcium that is sufficiently high to activate KCa1.1 and, thus like CDI of P/Q-type channels, is sensitive to internal EGTA (Fig. 5d). An additional consideration concerns the stoichiometry between Cav3 calcium and an associated potassium channel. Potassium channels are tetrameric assemblies, and thus, in principle, each potassium channel could interact with four Cav3 channels, although experimental evidence for a 4:1 stoichiometry is lacking. Along these lines, each potassium channel may have four different calcium sensors (i.e., four KChIP proteins, four calmodulin molecules, or four RCK domains/calcium bowls). Hence, the calcium dynamics of potassium channel activation/modulation may be immensely complex, giving rise to unexpected EGTA sensitivities that would complicate distance estimates based on the use of intracellular calcium buffers alone.

Concluding remarks

As we have discussed here, Cav3 channels can form molecular associations with three different potassium channel classes that rely on very different mechanisms for calcium sensing. The primary determinants for functional coupling at either a microdomain or nanodomain level appear to be defined by the relative conductance of the calcium channel and sensitivity of the calcium sensor to changes in intracellular calcium concentration. As result, initial work on the Cav3-KCa1.1 complex revealed a new form of calcium-dependent activation of potassium channels not originally expected according to the conventional means of defining interactions at the micro- and nanodomain levels (i.e., the use of buffer sensitivity alone is

insufficient to paint a complete picture). Another novel aspect is the observation that KCa3.1 channels are in fact expressed in CNS neurons where they regulate neuronal output, in part by forming a Cav3-KCa3.1 channel complex that can activate in the subthreshold region. The ability for Cav3 calcium current to activate KCa3.1 channels further confers voltage-dependent gating properties from Cav3 channels onto a normally voltage-insensitive KCa3.1 channel. Conversely, Cav3 channels confer calcium sensitivity onto the normally purely voltage-sensitive Kv4 channels via KChIP3 proteins. This altogether widens the traditional view of different ion channels acting independently—instead, there is intricate interplay between different ionic channels through formation of macromolecular signaling complexes. What remains to be examined is whether there is feedback regulation that allows the associated potassium channels to regulate Cav3 channels. Furthermore, it remains to be determined if the formation of signaling complexes can affect other channel features, such as trafficking to the plasma membrane and specific localization within neurons. Our observations that Cav3-K channel complexes can profoundly impact neuronal output may thus be only one of many important aspects of these molecular associations.

Acknowledgments We gratefully acknowledge the contributions of numerous laboratory members in the experimental and analytical components of the work summarized here. This work was supported by operating grants from the Canadian Institute of Health Research. R.W.T. and G.W.Z. are AI-HS Scientists and G.W.Z. holds a Canada Research Chair.

Open Access This article is distributed under the terms of the Creative Commons Attribution License which permits any use, distribution, and reproduction in any medium, provided the original author(s) and the source are credited.

References

- Adelman JP, Maylie J, Sah P (2012) Small-conductance Ca²⁺-activated K⁺ channels: form and function. *Annu Rev Physiol* 74: 245–269. doi:10.1146/annurev-physiol-020911-153336
- Alvina K, Khodakhah K (2008) Selective regulation of spontaneous activity of neurons of the deep cerebellar nuclei by N-type calcium channels in juvenile rats. *J Physiol* 586:2523–2538. doi:10.1113/jphysiol.2007.148197
- An WF et al (2000) Modulation of A-type potassium channels by a family of calcium sensors. *Nature* 403:553–556
- Anderson D et al (2010) Regulation of neuronal activity by Cav3–Kv4 channel signaling complexes. *Nat Neurosci* 13:333–337. doi:10.1038/nn.2493
- Anderson D, Rehak R, Hameed S, Mehaffey WH, Zamponi GW, Turner RW (2010) Regulation of the K(V)4.2 complex by Ca(V)3.1 calcium channels. *Channels (Austin)* 4(3):163–167
- Anderson D et al (2013) The Cav3–Kv4 complex acts as a calcium sensor to maintain inhibitory charge transfer during extracellular calcium fluctuations. *J Neurosci* 33:7811–7824. doi:10.1523/JNEUROSCI.5384-12.2013
- Autret L, Mechaly I, Scamps F, Valmier J, Lory P, Desmadryl G (2005) The involvement of Cav3.2/alpha1H T-type calcium

- channels in excitability of mouse embryonic primary vestibular neurones. *J Physiol* 567:67–78. doi:10.1113/jphysiol.2005.089342
8. Basalingappa KM, Rajendran VM, Wonderlin WF (2011) Characteristics of Kcnn4 channels in the apical membranes of an intestinal epithelial cell line. *Am J Physiol Gastrointest Liver Physiol* 301:G905–G911. doi:10.1152/ajpgi.00558.2010
 9. Begenisich T et al (2004) Physiological roles of the intermediate conductance, Ca²⁺-activated potassium channel Kcnn4. *J Biol Chem* 279:47681–47687. doi:10.1074/jbc.M409627200
 10. Berkefeld H et al (2006) BKCa–Cav channel complexes mediate rapid and localized Ca²⁺-activated K⁺ signaling. *Science* 314:615–620. doi:10.1126/science.1132915
 11. Berkefeld H, Fakler B (2008) Repolarizing responses of BKCa–Cav complexes are distinctly shaped by their Cav subunits. *J Neurosci* 28:8238–8245. doi:10.1523/JNEUROSCI.2274-08.2008
 12. Berkefeld H, Fakler B, Schulte U (2010) Ca²⁺-activated K⁺ channels: from protein complexes to function. *Physiol Rev* 90:1437–1459. doi:10.1152/physrev.00049.2009
 13. Bouhy D et al (2011) Inhibition of the Ca(2+)-dependent K(+) channel, KCNN4/KCa3.1, improves tissue protection and locomotor recovery after spinal cord injury. *J Neurosci* 31:16298–16308. doi:10.1523/JNEUROSCI.0047-11.2011
 14. Bourque CW (1988) Transient calcium-dependent potassium current in magnocellular neurosecretory cells of the rat supraoptic nucleus. *J Physiol* 397:331–347
 15. Burgoyne RD, Haynes LP (2012) Understanding the physiological roles of the neuronal calcium sensor proteins. *Mol Brain* 5:2. doi:10.1186/1756-6606-5-2
 16. Cain SM, Snutch TP (2013) T-type calcium channels in burst-firing, network synchrony, and epilepsy. *Biochim Biophys Acta* 1828:1572–1578. doi:10.1016/j.bbame.2012.07.028
 17. Catterall WA, Perez-Reyes E, Snutch TP, Striessnig J (2005) International Union of Pharmacology. XLVIII. Nomenclature and structure–function relationships of voltage-gated calcium channels. *Pharmacol Rev* 57:411–425. doi:10.1124/pr.57.4.5
 18. Chen QX, Wong RK (1991) Intracellular Ca²⁺ suppressed a transient potassium current in hippocampal neurons. *J Neurosci* 11:337–343
 19. Chen YJ, Raman G, Bodendiek S, O'Donnell ME, Wulff H (2011) The KCa3.1 blocker TRAM-34 reduces infarction and neurological deficit in a rat model of ischemia/reperfusion stroke. *J Cereb Blood Flow Metab* 31:2363–2374. doi:10.1038/jcbfm.2011.101
 20. Cheong E, Shin HS (2013) T-type Ca²⁺ channels in normal and abnormal brain functions. *Physiol Rev* 93:961–992. doi:10.1152/physrev.00010.2012
 21. Chevalier M, Lory P, Mironneau C, Macrez N, Quignard JF (2006) T-type CaV3.3 calcium channels produce spontaneous low-threshold action potentials and intracellular calcium oscillations. *Eur J Neurosci* 23:2321–2329. doi:10.1111/j.1460-9568.2006.04761.x
 22. Clark BD et al (2008) DPP6 localization in brain supports function as a Kv4 channel associated protein. *Front Mol Neurosci* 1:8. doi:10.3389/neuro.02.008.2008
 23. Coetzee WA et al (1999) Molecular diversity of K⁺ channels. *Ann N Y Acad Sci* 868:233–285
 24. Covarrubias M et al (2008) The neuronal Kv4 channel complex. *Neurochem Res* 33:1558–1567. doi:10.1007/s11064-008-9650-8
 25. Crunelli V, Toth TI, Cope DW, Blethyn K, Hughes SW (2005) The 'window' T-type calcium current in brain dynamics of different behavioural states. *J Physiol* 562:121–129. doi:10.1113/jphysiol.2004.076273
 26. Cueni L et al (2008) T-type Ca²⁺ channels, SK2 channels and SERCAs gate sleep-related oscillations in thalamic dendrites. *Nat Neurosci* 11:683–692. doi:10.1038/nn.2124
 27. Cueni L, Canepari M, Adelman JP, Luthi A (2009) Ca(2+) signaling by T-type Ca(2+) channels in neurons. *Pflugers Arch* 457:1161–1172. doi:10.1007/s00424-008-0582-6
 28. Cui J, Yang H, Lee US (2009) Molecular mechanisms of BK channel activation. *Cell Mol Life Sci* 66:852–875. doi:10.1007/s00018-008-8609-x
 29. Deleuze C et al (2012) T-type calcium channels consolidate tonic action potential output of thalamic neurons to neocortex. *J Neurosci* 32:12228–12236. doi:10.1523/JNEUROSCI.1362-12.2012
 30. Dougherty K, Tu L, Deutsch C, Covarrubias M (2009) The dipeptidyl-aminopeptidase-like protein 6 is an integral voltage sensor-interacting beta-subunit of neuronal K(V)4.2 channels. *Channels (Austin)* 3:122–128
 31. Dreyfus FM et al (2010) Selective T-type calcium channel block in thalamic neurons reveals channel redundancy and physiological impact of I(T)window. *J Neurosci* 30:99–109. doi:10.1523/JNEUROSCI.4305-09.2010
 32. Edgerton JR, Reinhart PH (2003) Distinct contributions of small and large conductance Ca²⁺-activated K⁺ channels to rat Purkinje neuron function. *J Physiol* 548:53–69
 33. Engbers JD, Anderson D, Tadayonnejad R, Mehaffey WH, Molineux ML, Turner RW (2011) Distinct roles for I(T) and I(H) in controlling the frequency and timing of rebound spike responses. *J Physiol* 589:5391–5413. doi:10.1113/jphysiol.2011.215632
 34. Engbers JD et al (2012) Intermediate conductance calcium-activated potassium channels modulate summation of parallel fiber input in cerebellar Purkinje cells. *Proc Natl Acad Sci U S A* 109:2601–2606. doi:10.1073/pnas.1115024109
 35. Erickson MG, Alseikhan BA, Peterson BZ, Yue DT (2001) Preassociation of calmodulin with voltage-gated Ca(2+) channels revealed by FRET in single living cells. *Neuron* 31:973–985
 36. Fakler B, Adelman JP (2008) Control of K(Ca) channels by calcium nano/microdomains. *Neuron* 59:873–881. doi:10.1016/j.neuron.2008.09.001
 37. Fanger CM et al (1999) Calmodulin mediates calcium-dependent activation of the intermediate conductance KCa channel, IKCa1. *J Biol Chem* 274:5746–5754
 38. Foeger NC, Norris AJ, Wren LM, Nerbonne JM (2012) Augmentation of Kv4.2-encoded currents by accessory dipeptidyl peptidases 6 and 10 subunits reflects selective cell surface Kv4.2 protein stabilization. *J Biol Chem* 287(12):9640–9650. doi:10.1074/jbc.M111.324574
 39. Furness JB et al (2003) Expression of intermediate conductance potassium channel immunoreactivity in neurons and epithelial cells of the rat gastrointestinal tract. *Cell Tissue Res* 314:179–189. doi:10.1007/s00441-003-0808-z
 40. Furness JB et al (2004) Intermediate conductance potassium (IK) channels occur in human enteric neurons. *Auton Neurosci* 112:93–97. doi:10.1016/j.autneu.2004.02.003
 41. Gardos G (1958) The function of calcium in the potassium permeability of human erythrocytes. *Biochim Biophys Acta* 30:653–654
 42. Ghanshani S et al (2000) Upregulation of the IKCa1 potassium channel during T-cell activation. Molecular mechanism and functional consequences. *J Biol Chem* 275:37137–37149. doi:10.1074/jbc.M003941200
 43. Gittis AH, du Lac S (2007) Firing properties of GABAergic versus non-GABAergic vestibular nucleus neurons conferred by a differential balance of potassium currents. *J Neurophysiol* 97:3986–3996. doi:10.1152/jn.00141.2007
 44. Gittis AH, Moghadam SH, du Lac S (2010) Mechanisms of sustained high firing rates in two classes of vestibular nucleus neurons: differential contributions of resurgent Na, Kv3, and BK currents. *J Neurophysiol* 104:1625–1634. doi:10.1152/jn.00378.2010
 45. Grunnet M, Kaufmann WA (2004) Coassembly of big conductance Ca²⁺-activated K⁺ channels and L-type voltage-gated Ca²⁺ channels in rat brain. *J Biol Chem* 279:36445–36453. doi:10.1074/jbc.M402254200
 46. Gu N, Vervaeke K, Storm JF (2007) BK potassium channels facilitate high-frequency firing and cause early spike frequency

- adaptation in rat CA1 hippocampal pyramidal cells. *J Physiol* 580: 859–882. doi:10.1113/jphysiol.2006.126367
47. Gutman GA et al (2005) International Union of Pharmacology. LIII. Nomenclature and molecular relationships of voltage-gated potassium channels. *Pharmacol Rev* 57:473–508
 48. Hannah RM, Dunn KM, Bonev AD, Nelson MT (2011) Endothelial SK(Ca) and IK(Ca) channels regulate brain parenchymal arteriolar diameter and cortical cerebral blood flow. *J Cereb Blood Flow Metab* 31:1175–1186. doi:10.1038/jcbfm.2010.214
 49. Heinemann U, Lux HD, Gutnick MJ (1977) Extracellular free calcium and potassium during paroxysmal activity in the cerebral cortex of the cat. *Exp Brain Res* 27:237–243
 50. Hirst GD, Johnson SM, van Helden DF (1985) The slow calcium-dependent potassium current in a myenteric neurone of the guinea-pig ileum. *J Physiol* 361:315–337
 51. Iftinca MC, Zamponi GW (2009) Regulation of neuronal T-type calcium channels. *Trends Pharmacol Sci* 30:32–40. doi:10.1016/j.tips.2008.10.004
 52. Ishii TM, Silvia C, Hirschberg B, Bond CT, Adelman JP, Maylie J (1997) A human intermediate conductance calcium-activated potassium channel. *Proc Natl Acad Sci U S A* 94:11651–11656
 53. Jensen BS, Strobaek D, Olesen SP, Christophersen P (2001) The Ca²⁺-activated K⁺ channel of intermediate conductance: a molecular target for novel treatments? *Curr Drug Targets* 2:401–422
 54. Jerng HH, Pfaffinger PJ, Covarrubias M (2004) Molecular physiology and modulation of somatodendritic A-type potassium channels. *Mol Cell Neurosci* 27:343–369
 55. Jerng HH, Kunjilwar K, Pfaffinger PJ (2005) Multiprotein assembly of Kv4.2, KChIP3 and DPP10 produces ternary channel complexes with ISA-like properties. *J Physiol* 568:767–788
 56. Jerng HH, Lauer AD, Pfaffinger PJ (2007) DPP10 splice variants are localized in distinct neuronal populations and act to differentially regulate the inactivation properties of Kv4-based ion channels. *Mol Cell Neurosci* 35:604–624. doi:10.1016/j.mcn.2007.03.008
 57. Joiner WJ, Wang LY, Tang MD, Kaczmarek LK (1997) hSK4, a member of a novel subfamily of calcium-activated potassium channels. *Proc Natl Acad Sci U S A* 94:11013–11018
 58. Joiner WJ, Khanna R, Schlichter LC, Kaczmarek LK (2001) Calmodulin regulates assembly and trafficking of SK4/IK1 Ca²⁺-activated K⁺ channels. *J Biol Chem* 276:37980–37985. doi:10.1074/jbc.M104965200
 59. Kaulin YA, De Santiago-Castillo JA, Rocha CA, Nadal MS, Rudy B, Covarrubias M (2009) The dipeptidyl-peptidase-like protein DPP6 determines the unitary conductance of neuronal Kv4.2 channels. *J Neurosci* 29:3242–3251. doi:10.1523/JNEUROSCI.4767-08.2009
 60. Kaushal V, Koeberle PD, Wang Y, Schlichter LC (2007) The Ca²⁺-activated K⁺ channel KCNN4/KCa3.1 contributes to microglia activation and nitric oxide-dependent neurodegeneration. *J Neurosci* 27:234–244. doi:10.1523/JNEUROSCI.3593-06.2007
 61. Khanna R, Chang MC, Joiner WJ, Kaczmarek LK, Schlichter LC (1999) hSK4/hIK1, a calmodulin-binding KCa channel in human T lymphocytes. Roles in proliferation and volume regulation. *J Biol Chem* 274:14838–14849
 62. Kim LA, Furst J, Butler MH, Xu S, Grigorieff N, Goldstein SA (2004) Ito channels are octameric complexes with four subunits of each Kv4.2 and K⁺ channel-interacting protein 2. *J Biol Chem* 279:5549–5554
 63. Kohler M et al (1996) Small-conductance, calcium-activated potassium channels from mammalian brain. *Science* 273:1709–1714
 64. Lambert RC, Bessaih T, Leresche N (2006) Modulation of neuronal T-type calcium channels. *CNS Neurol Disord Drug Targets* 5:611–627
 65. Lambert RC, Bessaih T, Crunelli V, Leresche N (2013) The many faces of T-type calcium channels. *Pflugers Arch*. doi:10.1007/s00424-013-1353-6, epub
 66. Lancaster B, Adams PR (1986) Calcium-dependent current generating the afterhyperpolarization of hippocampal neurons. *J Neurophysiol* 55:1268–1282
 67. Lancaster B, Nicoll RA (1987) Properties of two calcium-activated hyperpolarizations in rat hippocampal neurones. *J Physiol* 389:187–203
 68. Lancaster B, Zucker RS (1994) Photolytic manipulation of Ca²⁺ and the time course of slow, Ca(2+)-activated K⁺ current in rat hippocampal neurones. *J Physiol* 475:229–239
 69. Lasser-Ross N, Ross WN, Yarom Y (1997) Activity-dependent [Ca²⁺]_i changes in guinea pig vagal motoneurons: relationship to the slow afterhyperpolarization. *J Neurophysiol* 78:825–834
 70. Liang H, DeMaria CD, Erickson MG, Mori MX, Alseikhan BA, Yue DT (2003) Unified mechanisms of Ca²⁺ regulation across the Ca²⁺ channel family. *Neuron* 39:951–960
 71. Liu BS, Ferreira R, Lively S, Schlichter LC (2013) Microglial SK3 and SK4 currents and activation state are modulated by the neuroprotective drug, riluzole. *J Neuroimmune Pharmacol* 8:227–237. doi:10.1007/s11481-012-9365-0
 72. Logsdon NJ, Kang J, Togo JA, Christian EP, Aiyar J (1997) A novel gene, hKCa4, encodes the calcium-activated potassium channel in human T lymphocytes. *J Biol Chem* 272:32723–32726
 73. Lusin JD, Vanarotti M, Li C, Valiveti A, Ames JB (2008) NMR structure of DREAM: implications for Ca(2+)-dependent DNA binding and protein dimerization. *Biochemistry* 47:2252–2264. doi:10.1021/bi7017267
 74. MacDermott AB, Weight FF (1982) Action potential repolarization may involve a transient, Ca²⁺-sensitive outward current in a vertebrate neurone. *Nature* 300:185–188
 75. Maffie J, Rudy B (2008) Weighing the evidence for a ternary protein complex mediating A-type K⁺ currents in neurons. *J Physiol* 586: 5609–5623. doi:10.1113/jphysiol.2008.161620
 76. Marrion NV, Tavalin SJ (1998) Selective activation of Ca²⁺-activated K⁺ channels by co-localized Ca²⁺ channels in hippocampal neurons. *Nature* 395:900–905. doi:10.1038/27674
 77. McKay BE et al (2006) Cav3 T-type calcium channel isoforms differentially distribute to somatic and dendritic compartments in rat central neurons. *Eur J Neurosci* 24:2581–2594. doi:10.1111/j.1460-9568.2006.05136.x
 78. Minor DL Jr, Findeisen F (2010) Progress in the structural understanding of voltage-gated calcium channel (CaV) function and modulation. *Channels (Austin)* 4:459–474. doi:10.4161/chan.4.6.12867
 79. Mittmann W, Koch U, Hausser M (2005) Feed-forward inhibition shapes the spike output of cerebellar Purkinje cells. *J Physiol* 563: 369–378. doi:10.1113/jphysiol.2004.075028
 80. Molineux ML, Fernandez FR, Mehaffey WH, Turner RW (2005) A-type and T-type currents interact to produce a novel spike latency-voltage relationship in cerebellar stellate cells. *J Neurosci* 25: 10863–10873. doi:10.1523/JNEUROSCI.3436-05.2005
 81. Molineux ML et al (2006) Specific T-type calcium channel isoforms are associated with distinct burst phenotypes in deep cerebellar nuclear neurons. *Proc Natl Acad Sci U S A* 103:5555–5560
 82. Molineux ML, Mehaffey WH, Tadayonnejad R, Anderson D, Tennent AF, Turner RW (2008) Ionic factors governing rebound burst phenotype in rat deep cerebellar neurons. *J Neurophysiol* 100: 2684–2701. doi:10.1152/jn.90427.2008
 83. Mongan LC et al (2005) The distribution of small and intermediate conductance calcium-activated potassium channels in the rat sensory nervous system. *Neuroscience* 131:161–175. doi:10.1016/j.neuroscience.2004.09.062
 84. Monteil A, Chemin J, Bourinet E, Mennessier G, Lory P, Nargeot J (2000) Molecular and functional properties of the human alpha(1G) subunit that forms T-type calcium channels. *J Biol Chem* 275:6090–6100
 85. Muller A, Kukley M, Uebachs M, Beck H, Dietrich D (2007) Nanodomains of single Ca²⁺ channels contribute to action potential repolarization in cortical neurons. *J Neurosci* 27:483–495. doi:10.1523/JNEUROSCI.3816-06.2007

86. Nadal MS, Amarillo Y, Vega-Saenz de Miera E, Rudy B (2001) Evidence for the presence of a novel Kv4-mediated A-type K(+) channel-modifying factor. *J Physiol* 537:801–809
87. Nadal MS, Amarillo Y, Vega-Saenz de Miera E, Rudy B (2006) Differential characterization of three alternative spliced isoforms of DPPX. *Brain Res* 1094:1–12. doi:10.1016/j.brainres.2006.03.106
88. Nadin BM, Pfaffinger PJ (2010) Dipeptidyl peptidase-like protein 6 is required for normal electrophysiological properties of cerebellar granule cells. *J Neurosci* 30:8551–8565. doi:10.1523/JNEUROSCI.5489-09.2010
89. Nelson AB, Krispel CM, Sekimjak C, du Lac S (2003) Long-lasting increases in intrinsic excitability triggered by inhibition. *Neuron* 40:609–620
90. Neylon CB et al (2004) Intermediate-conductance calcium-activated potassium channels in enteric neurones of the mouse: pharmacological, molecular and immunochemical evidence for their role in mediating the slow afterhyperpolarization. *J Neurochem* 90:1414–1422. doi:10.1111/j.1471-4159.2004.02593.x
91. Neylon CB, Fowler CJ, Furness JB (2006) Regulation of the slow afterhyperpolarization in enteric neurons by protein kinase A. *Auton Neurosci* 126–127:258–263. doi:10.1016/j.autneu.2006.02.028
92. Nguyen TV et al (2007) Effects of compounds that influence IK (KCNN4) channels on afterhyperpolarizing potentials, and determination of IK channel sequence, in guinea pig enteric neurons. *J Neurophysiol* 97:2024–2031. doi:10.1152/jn.00935.2006
93. Nicholson C, Bruggencate GT, Steinberg R, Stockle H (1977) Calcium modulation in brain extracellular microenvironment demonstrated with ion-selective micropipette. *Proc Natl Acad Sci U S A* 74:1287–1290
94. Norris AJ, Foeger NC, Nerbonne JM (2010) Interdependent roles for accessory KChIP2, KChIP3, and KChIP4 subunits in the generation of Kv4-encoded IA channels in cortical pyramidal neurons. *J Neurosci* 30:13644–13655. doi:10.1523/JNEUROSCI.2487-10.2010
95. Osawa M et al (2001) Calcium-regulated DNA binding and oligomerization of the neuronal calcium-sensing protein, calsenilin/DREAM/KChIP3. *J Biol Chem* 276:41005–41013. doi:10.1074/jbc.M105842200
96. Pedarzani P, Stocker M (2008) Molecular and cellular basis of small- and intermediate-conductance, calcium-activated potassium channel function in the brain. *Cell Mol Life Sci* 65:3196–3217. doi:10.1007/s00018-008-8216-x
97. Perez-Reyes E (2003) Molecular physiology of low-voltage-activated t-type calcium channels. *Physiol Rev* 83:117–161
98. Pioletti M, Findeisen F, Hura GL, Minor DL Jr (2006) Three-dimensional structure of the KChIP1–Kv4.3 T1 complex reveals a cross-shaped octamer. *Nat Struct Mol Biol* 13:987–995
99. Pongs O, Schwarz JR (2010) Ancillary subunits associated with voltage-dependent K+ channels. *Physiol Rev* 90:755–796. doi:10.1152/physrev.00020.2009
100. Powell KL, Cain SM, Snutch TP, O'Brien TJ (2013) Low threshold T-type calcium channels as targets for novel epilepsy treatments. *Br J Clin Pharmacol*. doi:10.1111/bcp.12205, epub
101. Rehak R, Bartoletti TM, Engbers JD, Berecki G, Turner RW, Zamponi GW (2013) Low voltage activation of KCa1.1 current by Cav3–KCa1.1 complexes. *PLoS One* 8:e61844
102. Rehak R, Bartoletti TM, Engbers JD, Berecki G, Turner RW, Zamponi GW (2013) Low voltage activation of KCa1.1 current by Cav3–KCa1.1 complexes. *PLoS One* 8:e61844
103. Ren X, Hayashi Y, Yoshimura N, Takimoto K (2005) Transmembrane interaction mediates complex formation between peptidase homologues and Kv4 channels. *Mol Cell Neurosci* 29:320–332
104. Rhodes KJ et al (2004) KChIPs and Kv4 alpha subunits as integral components of A-type potassium channels in mammalian brain. *J Neurosci* 24:7903–7915. doi:10.1523/JNEUROSCI.0776-04.2004
105. Sailer CA et al (2002) Regional differences in distribution and functional expression of small-conductance Ca2+-activated K+ channels in rat brain. *J Neurosci* 22:9698–9707
106. Sailer CA, Kaufmann WA, Marksteiner J, Knaus HG (2004) Comparative immunohistochemical distribution of three small-conductance Ca2+-activated potassium channel subunits, SK1, SK2, and SK3 in mouse brain. *Mol Cell Neurosci* 26:458–469
107. Saviane C, Mohajerani MH, Cherubini E (2003) An ID-like current that is downregulated by Ca2+ modulates information coding at CA3–CA3 synapses in the rat hippocampus. *J Physiol* 552:513–524
108. Serodio P, Rudy B (1998) Differential expression of Kv4 K+ channel subunits mediating subthreshold transient K+ (A-type) currents in rat brain. *J Neurophysiol* 79:1081–1091
109. Shao, L.R., Halvorsrud, R., Borg-Graham, L., Storm, J.F. (1999) The role of BK-type Ca2+-dependent K+ channels in spike broadening during repetitive firing in rat hippocampal pyramidal cells. *J Physiol* 521 Pt 1:135–146
110. Shibata R et al (2003) A fundamental role for KChIPs in determining the molecular properties and trafficking of Kv4.2 potassium channels. *J Biol Chem* 278:36445–36454
111. Smith MR, Nelson AB, Du Lac S (2002) Regulation of firing response gain by calcium-dependent mechanisms in vestibular nucleus neurons. *J Neurophysiol* 87:2031–2042. doi:10.1152/jn.00821.2001
112. Spafford JD, Dunn T, Smit AB, Syed NI, Zamponi GW (2006) In vitro characterization of L-type calcium channels and their contribution to firing behavior in invertebrate respiratory neurons. *J Neurophysiol* 95:42–52. doi:10.1152/jn.00658.2005
113. Stocker M, Pedarzani P (2000) Differential distribution of three Ca(2+)-activated K(+) channel subunits, SK1, SK2, and SK3, in the adult rat central nervous system. *Mol Cell Neurosci* 15:476–493. doi:10.1006/mcne.2000.0842
114. Stockle H, Ten Bruggencate G (1980) Fluctuation of extracellular potassium and calcium in the cerebellar cortex related to climbing fiber activity. *Neuroscience* 5:893–901
115. Storm JF (1987) Action potential repolarization and a fast afterhyperpolarization in rat hippocampal pyramidal cells. *J Physiol* 385:733–759
116. Storm JF (1990) Potassium currents in hippocampal pyramidal cells. *Prog Brain Res* 83:161–187
117. Sun X, Gu XQ, Haddad GG (2003) Calcium influx via L- and N-type calcium channels activates a transient large-conductance Ca2+-activated K+ current in mouse neocortical pyramidal neurons. *J Neurosci* 23:3639–3648
118. Swensen AM, Bean BP (2003) Ionic mechanisms of burst firing in dissociated Purkinje neurons. *J Neurosci* 23:9650–9663
119. Thompson-Vest N, Shimizu Y, Hunne B, Furness JB (2006) The distribution of intermediate-conductance, calcium-activated, potassium (IK) channels in epithelial cells. *J Anat* 208:219–229. doi:10.1111/j.1469-7580.2006.00515.x
120. Todorovic SM, Jevtovic-Todorovic V (2011) T-type voltage-gated calcium channels as targets for the development of novel pain therapies. *Br J Pharmacol* 163:484–495
121. Tscherter A et al (2011) Minimal alterations in T-type calcium channel gating markedly modify physiological firing dynamics. *J Physiol* 589:1707–1724. doi:10.1113/jphysiol.2010.203836
122. Tsien RW, Lipscombe D, Madison D, Bley K, Fox A (1995) Reflections on Ca(2+)-channel diversity, 1988–1994. *Trends Neurosci* 18:52–54
123. van Welie I, du Lac S (2011) Bidirectional control of BK channel open probability by CAMKII and PKC in medial vestibular nucleus neurons. *J Neurophysiol* 105:1651–1659. doi:10.1152/jn.00058.2011
124. Vandorpe DH et al (1998) cDNA cloning and functional characterization of the mouse Ca2+-gated K+ channel, mIK1. Roles in regulatory volume decrease and erythroid differentiation. *J Biol Chem* 273:21542–21553

125. Viana F, Bayliss DA, Berger AJ (1993) Multiple potassium conductances and their role in action potential repolarization and repetitive firing behavior of neonatal rat hypoglossal motoneurons. *J Neurophysiol* 69:2150–2163
126. Vogalis F, Furness JB, Kunze WA (2001) Afterhyperpolarization current in myenteric neurons of the guinea pig duodenum. *J Neurophysiol* 85:1941–1951
127. Vogalis F, Harvey JR, Furness JB (2002) TEA- and apamin-resistant K(Ca) channels in guinea-pig myenteric neurons: slow AHP channels. *J Physiol* 538:421–433
128. Vogalis F, Harvey JR, Neylon CB, Furness JB (2002) Regulation of K⁺ channels underlying the slow afterhyperpolarization in enteric afterhyperpolarization-generating myenteric neurons: role of calcium and phosphorylation. *Clin Exp Pharmacol Physiol* 29:935–943
129. Vogalis F, Storm JF, Lancaster B (2003) SK channels and the varieties of slow after-hyperpolarizations in neurons. *Eur J Neurosci* 18:3155–3166
130. Walker SD, Dora KA, Ings NT, Crane GJ, Garland CJ (2001) Activation of endothelial cell IK(Ca) with 1-ethyl-2-benzimidazolinone evokes smooth muscle hyperpolarization in rat isolated mesenteric artery. *Br J Pharmacol* 134:1548–1554. doi:10.1038/sj.bjp.0704415
131. Wang H et al (2007) Structural basis for modulation of Kv4 K⁺ channels by auxiliary KChIP subunits. *Nat Neurosci* 10:32–39. doi:10.1038/nn1822
132. Wang J, Morishima S, Okada Y (2003) IK channels are involved in the regulatory volume decrease in human epithelial cells. *Am J Physiol Cell Physiol* 284:C77–C84. doi:10.1152/ajpcell.00132.2002
133. Weatherall KL, Goodchild SJ, Jane DE, Marrion NV (2010) Small conductance calcium-activated potassium channels: from structure to function. *Prog Neurobiol* 91:242–955. doi:10.1016/j.pneurobio.2010.03.002
134. Weber AM, Wong FK, Tufford AR, Schlichter LC, Matveev V, Stanley EF (2010) N-type Ca²⁺ channels carry the largest current: implications for nanodomains and transmitter release. *Nat Neurosci* 13:1348–1350. doi:10.1038/nn.2657
135. Wei AD, Gutman GA, Aldrich R, Chandy KG, Grissmer S, Wulff H (2005) International Union of Pharmacology. LII. Nomenclature and molecular relationships of calcium-activated potassium channels. *Pharmacol Rev* 57:463–472. doi:10.1124/pr.57.4.9
136. Weiss N et al (2012) A Ca(v)3.2/syntaxin-1A signaling complex controls T-type channel activity and low-threshold exocytosis. *J Biol Chem* 287:2810–2818. doi:10.1074/jbc.M111.290882
137. Weiss N, Zamponi GW (2013) Control of low-threshold exocytosis by T-type calcium channels. *Biochim Biophys Acta* 1828:1579–1586. doi:10.1016/j.bbamem.2012.07.031
138. Wolfart J, Roeper J (2002) Selective coupling of T-type calcium channels to SK potassium channels prevents intrinsic bursting in dopaminergic midbrain neurons. *J Neurosci* 22:3404–3413
139. Womack MD, Chevez C, Khodakhah K (2004) Calcium-activated potassium channels are selectively coupled to P/Q-type calcium channels in cerebellar Purkinje neurons. *J Neurosci* 24:8818–8822
140. Wulff H, Castle NA (2010) Therapeutic potential of KCa3.1 blockers: recent advances and promising trends. *Expert Rev Clin Pharmacol* 3:385–396. doi:10.1586/ecp.10.11
141. Xia XM et al (1998) Mechanism of calcium gating in small-conductance calcium-activated potassium channels. *Nature* 395:503–507. doi:10.1038/26758
142. Zamponi GW, Lory P, Perez-Reyes E (2010) Role of voltage-gated calcium channels in epilepsy. *Pflugers Arch* 460:395–403. doi:10.1007/s00424-009-0772-x
143. Zbicz KL, Weight FF (1985) Transient voltage and calcium-dependent outward currents in hippocampal CA3 pyramidal neurons. *J Neurophysiol* 53:1038–1058