

Research Article

Tomographic Evaluation of the Internal Adaptation for Recent Calcium Silicate-Based Pulp Capping Materials in Primary Teeth

A. A. Al Tuwirqi,¹ E. A. El Ashiry,¹ A. Y. Alzahrani ,² N. Bamashmous ,¹
and T. A. Bakhsh ³

¹Pediatric Dentistry Department, Faculty of Dentistry, King Abdulaziz University, P.O. Box 80209, Jeddah 215-89, Saudi Arabia

²Pediatric Dentistry, Taif Dental Centre, Ministry of health, Saudi Arabia

³Restorative Dentistry Department, Faculty of Dentistry, King Abdulaziz University, P.O. Box 80209, Jeddah 215-89, Saudi Arabia

Correspondence should be addressed to T. A. Bakhsh; taabakhsh@kau.edu.sa

Received 23 January 2021; Revised 25 March 2021; Accepted 26 April 2021; Published 10 May 2021

Academic Editor: Iole Vozza

Copyright © 2021 A. A. Al Tuwirqi et al. This is an open access article distributed under the Creative Commons Attribution License, which permits unrestricted use, distribution, and reproduction in any medium, provided the original work is properly cited.

Objectives. To evaluate the internal adaptation of recent pulp capping materials (TheraCal and Biodentine) relative to MTA when used as indirect pulp capping for primary teeth. **Materials and Methods.** Thirty primary molars were randomly allocated into three groups, group (A) was TheraCal, group (B) was Biodentine, and MTA was the control group (C). A standardized round class-V cavity (1.5 mm diameter and 2 mm depth) was prepared using a milling machine on the buccal surface of each tooth with the pulpal floor located on the dentin. Then, pulp-capping materials were applied. Finally, all teeth were restored by composite restoration. The internal adaptation of the pulp-capping materials to the dentinal surface was investigated by microcomputed tomography (Micro-CT) to determine the internal gap volume, and by optical coherence tomography (OCT) to determine the high-intensity reflection of light from the floor. **Results.** Based on Micro-CT findings, TheraCal showed significantly higher internal gap volume than both MTA and Biodentine ($p < 0.001$), while MTA and Biodentine did not show a significant difference in the gap volume. Based on the OCT findings, TheraCal showed a significantly higher intensity of light reflection than both MTA and Biodentine ($p < 0.001$); however, there was no significant difference between MTA and Biodentine. Pearson's correlation test showed that there was a strong positive correlation between Micro-CT and OCT ($r = 0.686$, $N = 30$, $p < 0.001$). **Conclusions.** Biodentine and MTA showed a comparable result in terms of their internal adaptation on the dentinal surface of the primary teeth, and both were better than TheraCal. There is a moderate to a strong positive correlation between Micro-CT and OCT in the measurement of internal adaptation of the tested pulp capping materials. OCT can be helpful and beneficial for the clinical setting and allow dentists to screen and evaluate restorations during follow-up.

1. Introduction

Managing dental caries approaching the pulp is a major issue in clinical dentistry. Indirect pulp capping (IPC) treatment by preserving tooth vitality is the recommended approach for the management of deep dental caries involving vital teeth [1, 2]. Although several restorative materials offer good properties in a deep cavity, not all protect the pulpal tissues during setting or during mechanical and thermal stresses. A base or liner is usually inserted at the dentin-restoration interface to protect the pulp [3]. Materials that are composed

mainly of calcium silicate are considered bioactive materials, since they induce the formation of dentin bridges by releasing their ions [4, 5]. IPC promotes dental caries recovery by using a bioactive material to isolate and seal the carious lesion and promotes the regeneration and maintenance of pulp vitality [6]. A pulp capping material should be dimensionally stable, radiopaque, and insoluble in tissue fluids. It should be able to maintain a sufficient seal and exhibit biocompatibility and bioactivity. It should also be nontoxic, nongenotoxic, noncarcinogenic, and nonresorbable. However, none of the currently available biomaterials meet all these criteria [7, 8].

MTA has been available for two decades and is widely used in clinical practice, with high success rates. MTA mainly consists of calcium oxide. Calcium oxides are present in multiple forms, such as tricalcium aluminate, dicalcium silicate, and tricalcium silicate. Its long setting time has encouraged researchers to produce new types while simultaneously utilizing MTA technology. Calcium silicate-based materials, generally referred to as MTA cement, belong to a group of materials consisting primarily of dicalcium and tricalcium silicates. However, few studies have evaluated and compared the properties of these materials against ProRoot MTA [9]. Biodentine is a recently developed fast-setting cement based on tricalcium silicate. It is formed with MTA-based cement technology, with manufacturer claims of having superior handling properties and strength [10]. Biodentine was found to have physical properties comparable to those of normal dentin. Therefore, it can be used as a substitute for dentin beneath composite restorations. It can also be used as a direct and indirect pulp capping material or for endodontic perforation repair. Biodentine also induces odontoblast differentiation from undifferentiated mesenchymal cells inside the pulp [5, 11].

TheraCal is another material that was recently introduced by utilizing MTA technology and modified by adding resin to induce polymerization controlled by light-curing systems. Gandolfi et al. found that TheraCal has a lower solubility and higher capacity to release calcium than Pro-Root MTA and calcium hydroxide in a 28-day follow-up [12]. Two studies utilized TheraCal as a direct and indirect pulp capping material and found that it has a good ability to induce reparative dentin and form a dentin bridge [13, 14]. Inconsistent outcomes were found when reviewing studies that evaluated the sealing ability of these new materials. A study that evaluated the adaptation of MTA to Biodentine found that MTA has a superior sealing ability when used as a root-end filling material [10]. In another study, both Biodentine and MTA exhibited similar performances in adaptation when used for restoration when assessed by electron microscopy [15]. In another study, Biodentine showed superior adaptation compared with MTA when examined by confocal laser scanning microscopy (CLSM) [16]. The only laboratory study comparing TheraCal's sealing ability against that of MTA and Biodentine using CLSM showed that TheraCal displayed a higher sealing ability and lesser leakage than MTA and Biodentine [17].

Microleakage and the absence of secure adaptation in the tooth-restoration interface are the main factors that affect the success and longevity of dental restorations. This might cause discoloration of the restoration, recurrence of caries, hypersensitivity, development of pulpal disease, and subsequent treatment failure [18]. Souza-Junior et al. conducted a study to evaluate marginal and internal adaptation and found that an internal gap was present in the pulp line angle of restoration [19], which would cause tooth sensitivity that may lead to bond degradation and restoration failure [20]. One of the significant objectives of tooth restoration is to protect the exposed dentin against oral flora. Therefore, the interface between the dental tissue and restoration has been an area of concern in clinical dentistry, as failure to achieve an opti-

mal seal will cause treatment failure [21]. Interestingly, the internal gaps cannot be detected by conventional X-rays. Microcomputed tomography (Micro-CT or μ CT) has recently been used for evaluating the internal adaptation of restorative materials [22, 23]. This new technological advancement has led to the opportunity to perform a three-dimensional quantitative and qualitative assessment, is less time consuming, and provides more detailed outcomes by considering the entire restorative interface [23–29]. Optical coherence tomography (OCT) is a new imaging modality that is considered very promising. Many features make OCT very encouraging for clinical application [30]. These advantages include noninvasiveness, lack of radiation, ease of interpretation of both soft and hard tissues, and high spatial resolution [31–33]. Furthermore, in an *in vitro* study, OCT could visualize the internal microstructures of tissues or biomaterials without the need to cut specimens [34–36].

Few studies have addressed the internal adaptation of new pulp capping materials (TheraCal and Biodentine), and they reported a dialectical outcome [10, 37, 38]. Furthermore, no research has been performed to correlate OCT with Micro-CT for the evaluation of internal adaptation of pulp capping materials. Therefore, this study aimed to evaluate the internal adaptation of recent pulp capping materials (TheraCal, Biodentine, and MTA) as indirect pulp capping materials for primary teeth. Another aim of the present study was to compare the OCT against the Micro-CT in the evaluation of the internal adaptation for recent pulp capping materials in the primary teeth.

2. Materials and Methods

Ethical approval for the study protocol was obtained from the Research Ethical Committee at the Faculty of Dentistry and University Dental Hospital, King Abdulaziz University, Jeddah, Saudi Arabia (4-2-2019). This study was an *in vitro* study. The study's statistical power was calculated using statistical power analysis on the findings of both Micro-CT and OCT. The study's power to detect the groups' differences was on the ideal level for the sample size used in this study and for both Micro-CT and OCT. Thirty freshly extracted noncarious primary molars were collected. The teeth were cleaned using an ultrasonic scaler and stored in distilled water at room temperature. The teeth were randomly distributed to three groups according to the pulp capping material used ($n = 10$), group (A) for TheraCal, group (B) for Biodentine, and group (C) for MTA as control. The randomization was made using Statistical Package of Social Sciences (SPSS) program version 20.0 for Windows (Armonk, NY; IBM Corp.).

2.1. Specimen Preparation. Cylindrical standardized class V cavity preparations were prepared in the cervical third of each tooth on the buccal surface using a milling machine under continuous water coolant spray by one operator. Each bur was replaced after five preparations. The cavity dimensions were 1.5 mm diameter and 2 mm depth, and the cavity floor was on the dentin surface.

2.2. Dental Pulp Capping Materials Mixing and Application.

In group A, TheraCal (Bisco, USA) was applied directly using its syringe tip inside the cavity, according to the manufacturer's instruction, and cured for 20 s. In groups B and C, the mixing of the Biodentine (Septodont Saint-Maur des-Fossés, France) and MTA (Dentsply, USA) materials was carried out following the manufacturer's instruction. Then, the pulp capping material was applied using the small tip of the amalgam carrier and condensation by using a conventional amalgam condenser. Based on the manufacturer's instructions, the TheraCal is set immediately after 20 seconds of curing with the light cure. While both Biodentine and MTA are set by hydration reaction, and both need time to set. Therefore, a wet cotton pellet was applied to cover the MTA and Biodentine, and a period was given to the materials to set before final restoration, MTA for 4 h and Biodentine for 12 min. The setting time of both materials was estimated based on a previous review study for the property of MTA and Biodentine [10, 39]. Next, all teeth were restored with the 5th-generation bonding agent (Adper single bond, 3M ESPE, USA) followed by Filtek Z350 XT composite restoration (3M ESPE, USA) in incremental filling technique. All restorative materials were cured with the same light-curing unit (Elipar, Curing Light 2500, 3M EPSE, USA). All specimens were subjected to thermocycling (SD Mechatronic machine, Germany) for 1000 cycles between 5°C and 55°C with a dwell time of 30 s, in order to mimic the oral condition.

2.3. Micro-CT Scanning and Image Analysis. The utilized Micro-CT system was Skyscan (Model 1172, Skyscan Kontich, Belgium), and the reconstruction was made using the NRecon version 1.6 software. Each specimen was mounted in a sample holder, and wax was used during Micro-CT scanning to prevent movement during the measurement. The evaluation goal was to quantify the volume of the gap and the volume of total restoration for each specimen in a cubic millimeter. The first step was to define the region of interest, which is the interface between the pulp capping materials and the dentinal surface, which was done using CT-Analyser V.1.11 software. The samples were segmented in the CT slices based on their grey-scale values. Accordingly, the total restoration volume and gap volume were measured. The gap volume was computed from the inversed segmented image of the region of interest, which is the interface between the pulp capping materials and the dentinal surface and based on density. The analysis was started using the evaluation program with a one-click operation and using all images within the area of interest.

2.4. OCT Scanning and Image Analysis. The utilized CP-OCT (IVS-300, Santec, Japan) system was integrated into a portable PC. The CP-OCT system was fitted with an adjustable probe that projects a high scanning rate diode laser (30 kHz) and a continuous wavelength centered about 1310 nm, with a wavelength range of 100 nm. The lateral resolution for axial resolution was about 30 μm and 12 μm, while the sensitivity of the device was 95 dB, and the output power of the probe was within the safety limits established by the American National Standard Institute [35, 40].

The specimen was fixed on a micrometer stage, and serial tomographic B-scan images for gap assessment at every 250 μm were obtained [40]. The acquired OCT scans were transferred into an external drive and reaccessed by another PC with an image analysis software (ImageJ 1.5 m9, National Institutes of Health, USA). The images were reconstructed into a grayscale representation following a previously described protocol [40]. The cavity floor was then selected, measured, and converted to a binary image containing white and black pixels. The areas with high backscattered reflections over a white background have been converted into black pixels, representing gaps.

The gap percentage on the pulpal floor of the restoration was calculated using the equation:

$$\text{Gap percentage} = (\text{Gap width}/\text{width of cavity floor}) \times 100. \quad (1)$$

2.5. Statistical Analysis. SPSS version 21.0 was used to analyze the collected data. The significance level for the analysis was set at $p < 0.05$; the level of confidence for this analysis was 95%. The Shapiro-Wilk test of normality was used on the findings and showed a normal distribution of the data (p value = 0.485). Therefore, a one-way ANOVA test was used to test the findings of both Micro-CT and OCT, followed by the least significant difference test (LSD) for multiple comparisons.

In regard to the comparison between the findings of Micro-CT and OCT, a Pearson correlation test was used. The level and strength of the correlation were measured according to Akoglu [41]. The cutoff point for the strength of the correlation was set at $r = \pm 0.7$ between the strong and moderate and $r = \pm 0.4$ between the moderate and weak correlation [41].

3. Results

The Micro-CT findings showed that the mean of total restoration volume (mm³) for groups A, B, and C were 10.893 ± 1.3 , 10.888 ± 1.28 , and 10.877 ± 1.28 , respectively, and the p value within the group was equal to ($p = 1$) with no significant differences between the groups. In regard to the mean of total gap volume in (mm³), the value for group A was 0.207 ± 0.062 , for group B was 0.021 ± 0.01 , and for group C was 0.023 ± 0.015 . There was a significant difference between the groups ($p \leq 0.001$).

Micro-CT findings are presented in Table 1 and Figure 1. Representative images for each group are presented in Figure 2. The mean ratio between the total gap volume and total restoration volume was 1.903 ± 0.551 , 0.2 ± 0.106 , and 0.213 ± 0.147 for groups A, B, and C, respectively ($p \leq 0.001$). The LSD test was applied to the findings to determine the differences between the groups (Table 2). The TheraCal group (A) showed a significantly ($p \leq 0.001$) higher volume of the gap compared to both Biodentine (B) and MTA (C). Biodentine (B) and MTA (C) did not show a significant difference in respect to total gap volume ($p = 0.927$). In regard to the mean ratio between the total gap volume

TABLE 1: ONE-WAY ANOVA for the Micro-CT findings.

Dependent variables	Group	N	Mean [mm ³]	SD	SE	p value
Total restoration volume	A	10	10.893	1.302	0.411	1.000
	B	10	10.888	1.283	0.405	
	C	10	10.877	1.289	0.407	
Total gap volume	A	10	0.207	0.062	0.019	<0.001*
	B	10	0.021	0.010	0.003	
	C	10	0.023	0.015	0.004	
Ratio of the total gap volume to total restoration volume	A	10	1.903	0.551	0.174	<0.001*
	B	10	0.200	0.106	0.033	
	C	10	0.213	0.147	0.046	

*Statistically significant $p < 0.05$. (a) TheraCal. (b) Biodentine. (c) MTA.

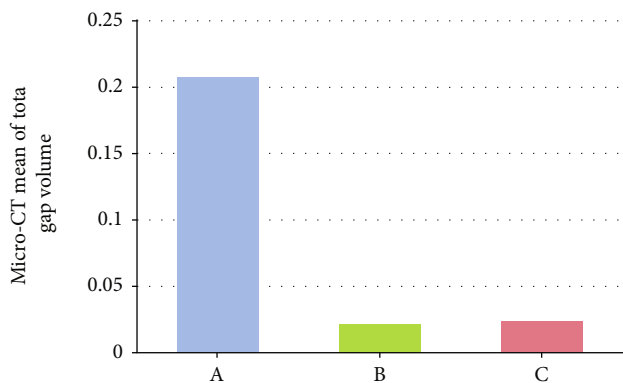


FIGURE 1: The mean value of total gap volume obtained by Micro-CT for the different groups. (A) TheraCal. (B) Biodentine. (C) MTA.

and total restoration volume, TheraCal group (A) showed a significantly ($p = 0.001$) higher ratio compared to both Biodentine (B) and MTA (C). While Biodentine (B) and MTA (C) did not show a significant difference in respect to the mean ratio ($p = 0.927$).

The OCT findings showed that the mean percentage of High-Intensity Reflection (HIR) of light in group A was 84.79 ± 3.17 , in group B was 76.98 ± 3.14 , and in group C was 76.87 ± 4.42 ($p \leq 0.001$) the findings are shown in (Table 3 and Figure 3). The LSD test was applied to the findings to determine the differences between the groups (Table 4). TheraCal group (A) showed significantly ($p \leq 0.001$) higher HIR compared to both Biodentine (B) and MTA (C). At the same time, Biodentine (B) and MTA (C) did not show a significant difference in HIR ($p = 0.946$). OCT scans for each group are presented in Figure 4. The mean HIR percentages at the cavity floor for the different groups.

Pearson's correlation showed that there is moderate to a strong positive correlation between Micro-CT and OCT ($r = 0.686$, $N = 30$, $p < 0.001$). Scatter plots for the findings are shown in Figure 5.

4. Discussion

The high success of MTA as a pulp-capping agent in previous studies makes it the gold standard as a vital pulp therapy

medicament. Therefore, it was selected as a control group in this study [1, 2, 10]. Biodentine and TheraCal were selected as they were recently introduced to overcome MTA problems in terms of handling and long setting time [10]. All of these materials possess similar basic composition and nearly the same biological properties, but they differ in their set time, physical, and chemical properties.

Many methods were utilized to evaluate the sealing and resistance to the leakage of dental restorative materials. These methods include the use of dye penetration, infiltration of fluids, electrochemical technique, models for bacterial leakage, and the usage of radioisotope tracers [42]. However, these methods require slicing and destruction of the specimen to assess leakage. Another obvious limitation in this method is the subjectivity in the assessment of leakage as the dye usually causes staining of sound dentin that must be differentiated from true leakage [23, 43, 44]. Moreover, the dye penetration method is assessed either by a subjective method utilizing a predetermined scale or by a quantitative evaluation using the depth of the dye infiltration. All these tests are complex and require several preparatory steps, which increase the chance of technical errors [29, 45].

On the other hand, Micro-CT and OCT are both advanced imaging techniques that have the advantage of the nondestructive nature of assessment for the internal adaptation of dental restorative materials at a micron-scale resolution [42]. OCT and Micro-CT also have the benefit of avoidance of loss of information during optical slicing of the specimen. This means the whole floor is visible for examination without any sample destruction [42, 46]. Micro-CT and OCT permit easy detection of microgaps and defective spots inside the internal structure of the restorative material in two and three-dimensional modes (2D, 3D) [28, 44]. For this reason, we adopted this imaging technique to evaluate the internal adaptation of pulp capping agents.

MTA-based pulp capping agents can prevent microleakage, promote tissue regeneration, and provide a better seal than calcium hydroxide [1, 47]. Despite their high cost to be used for IPC, this study attempted to answer the question of which of these materials have a high adaptation on the dentin of primary teeth. Furthermore, the MTA-based pulp capping materials have high biocompatibility and bioactivity,

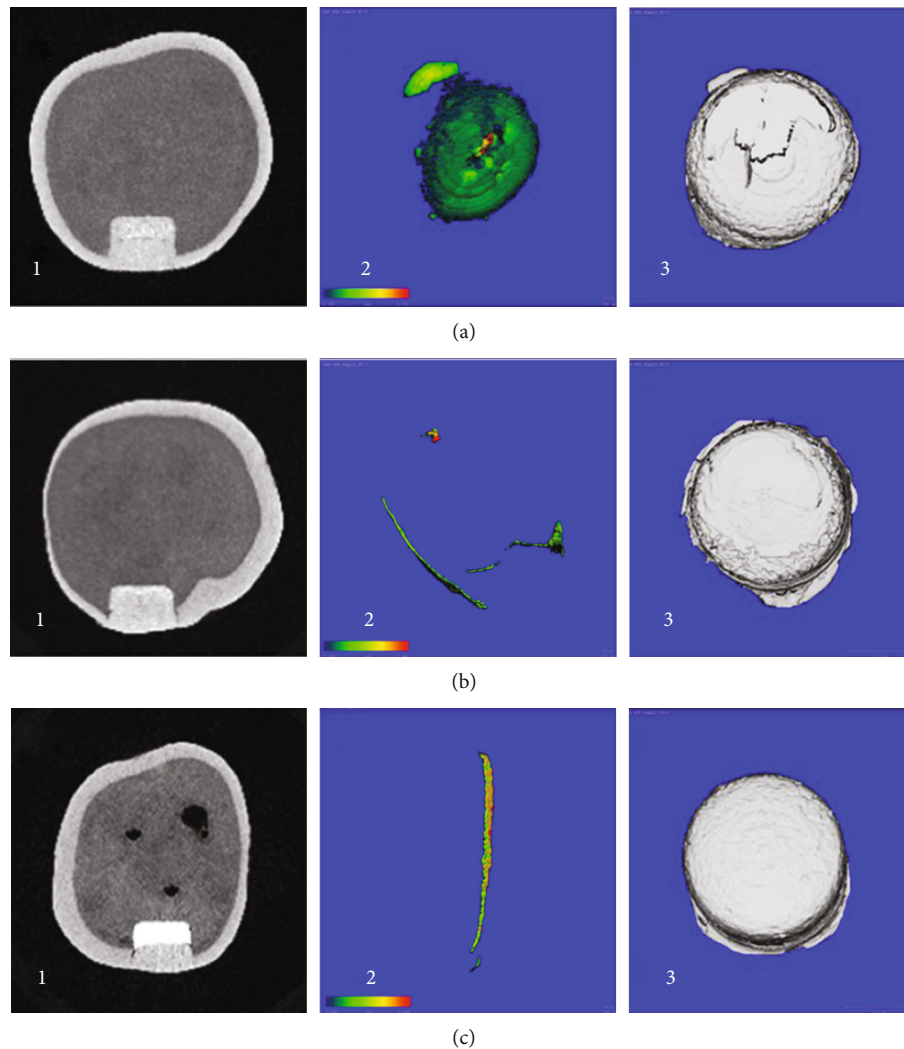


FIGURE 2: Representative figure obtained by Micro-CT for all groups. (a) TheraCal. (b) Biodentine. (c) MTA. The first row of the pictures is showing Micro-CT models for Group (a), the second row is showing group (b), while the third row is showing group (c). In every row, (1) picture is showing a cross-sectional 2D view for the sample. (2) 3D renderings of the sample showing the color-coded thickness of the gap within the region of interest, ranging from the thinnest structures (blue) to the thickest structures (red) according to the color bar at the bottom left. (3) 3D construction model for the restoration.

making them very valuable in maintaining vitality in the treatment of deep caries involving vital teeth [4, 5].

This study was carried out by standardization of the teeth type, shape, and size of the cavity, type of storage medium, duration of storage, and the placement of the final restoration. All of the molars were recently extracted, cleaned, and immediately stored in distilled water. According to Lee et al., distilled water gave higher shear bond strength than other utilized storage media [48]. All of these samples were prepared by the same investigator using a milling machine to produce a standard depth and width on the buccal surface of the molar teeth. The cavity standardization was performed successfully, and this was confirmed by the measurement of Micro-CT for the total restorative volume for all the groups, which did not show any significant differences, which supports the standardization protocol that was used in this study. Each of the pulp capping materials' setting time was determined based on a previous review study for the proper-

ties of MTA and Biodentine [6]. The wet cotton pellet was also applied temporarily to ensure proper hydration during the setting's chemical reaction and optimal setting of the pulp capping materials before the restorative placement.

Analysis of the results of the current study revealed that MTA and Biodentine showed a comparable outcome regarding their internal adaptation to the dentinal surface. Although MTA showed, to some extent, better adaptation than Biodentine, they did not differ significantly. This was in agreement with Mohan et al., Brenes-Valverde et al., and Juez et al. [37, 38, 49], who found that MTA and Biodentine showed similar adaptation. The high sealing ability of MTA is probably due to the setting expansion with time, which likely leads to the closure of the gaps inside the cavity [15]. Therefore, the success of this material might be due to the inherent ability for releasing calcium hydroxide combined with the high sealing ability [1, 10]. On the other hand, the high adaptation of Biodentine might be due to its capability

TABLE 2: The LSD multiple comparisons for the obtained Micro-CT results.

Dependent variable	Tested groups Comparison		Mean difference	<i>p</i> value
Total gap volume	A	B	0.186	<0.001*
		C	0.184	<0.001*
	B	A	- 0.186	<0.001*
		C	-0.001	0.932
	C	A	-0.184	<0.001*
		B	0.001	0.932
Ratio of the total gap to total restorative volume	A	B	1.703	<0.001*
		C	1.690	<0.001*
	B	A	-1.703	<0.001*
		C	-0.013	0.927
	C	A	-1.690	<0.001*
		B	0.013	0.927

*Statistically significant $p < 0.05$. (a) TheraCal. (b) Biodentine. (c) MTA.

TABLE 3: The ONE-WAY ANOVA for the OCT findings.

Group	N	Mean percentage of HIR	SD	SE	<i>p</i> value
A	10	84.79	3.17	1.00280	
B	10	76.98	3.14	0.99348	<0.001*
C	10	76.87	4.42	1.40016	

*Statistically significant $p < 0.05$. (a) TheraCal. (b) Biodentine. (c) MTA.

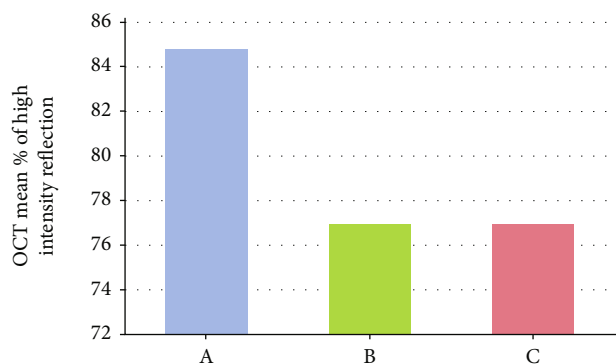


FIGURE 3: OCT mean HIR percentages at the cavity floor for the different groups. (A) TheraCal. (B) Biodentine. (C) MTA.

TABLE 4: The LSD multiple comparisons for OCT results.

Tested groups Comparison		Mean difference	<i>p</i> value
A	B	7.80	<0.001*
	C	7.91	<0.001*
B	A	-7.80	<0.001*
	C	0.11	0.946
C	A	-7.91	<0.001*
	B	-0.11	0.946

*Statistically Significant $p < 0.05$. (a) TheraCal. (b) Biodentine. (c) MTA.

to form hydroxyapatite crystals, which interlock chemically with the dentinal surface by penetration inside the dentinal tubules [10].

In this study, the MTA and Biodentine findings disagreed with the results of some previous studies [15, 16, 50]. However, in some of those studies, the adaptation and sealing were tested by different procedures, e.g., when used as direct pulp capping agents or for perforation repair or apical seal. Different setting environments could contribute to different results in sealing. Malhotra and Hegde found that Biodentine was superior to MTA as an apical barrier for the root's endings [50]. However, this study utilized Dye tracer and slicing of the specimens. However, our findings disagreed with this study, possibly due to the difference in the evaluation protocol and procedure. In a study by Sulaiman et al., the authors found that Biodentine had a lower gap compared to glass ionomer and MTA [15]. The methods used in their study could contribute to their different findings compared to the current study; the preparation of the tested pulp capping agents and the slicing of specimens may increase the risk of creating iatrogenic gaps and cracks.

Regarding TheraCal, the present study revealed that it had a significantly higher internal gap at the dentinal surface when compared to MTA and Biodentine. In contrast, the only laboratory study was done to evaluate the internal adaptation of TheraCal by using confocal laser microscopy found that TheraCal had high sealing when compared to MTA and Biodentine [17]. Their findings in regard to TheraCal were in disagreement with our study. However, they agreed with our study in the findings of MTA and Biodentine as they found both materials had a comparable outcome in sealing.

The materials that were tested in this study have different compositions and application methods. The powder's hydration reaction with the liquid leads to the setting and hardening of both MTA and Biodentine [10]. While based on the manufacturer's instructions, TheraCal LC is directly applied to dentin and cured without the use of any adhesive [51].

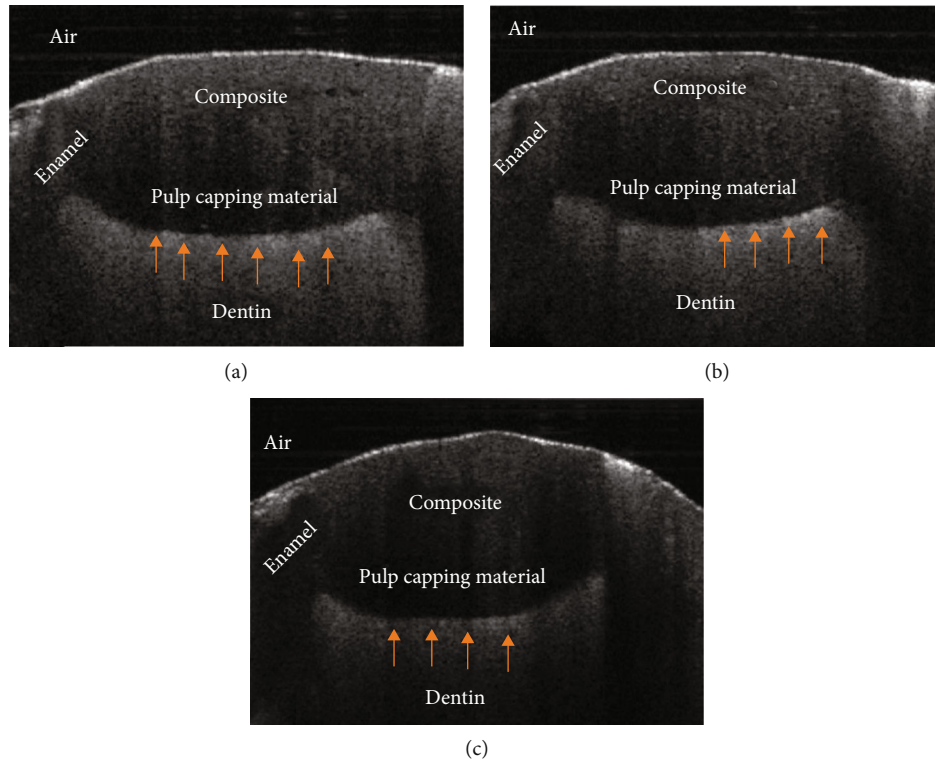


FIGURE 4: Representative OCT images for all tested groups. (a) TheraCal. (b) Biodentine. (c) MTA. Each B-scan is showing the composite restoration and the interface between the pulp capping material and the dentinal surface. The red arrows are pointing to the area of high-intensity reflection and microgaps.

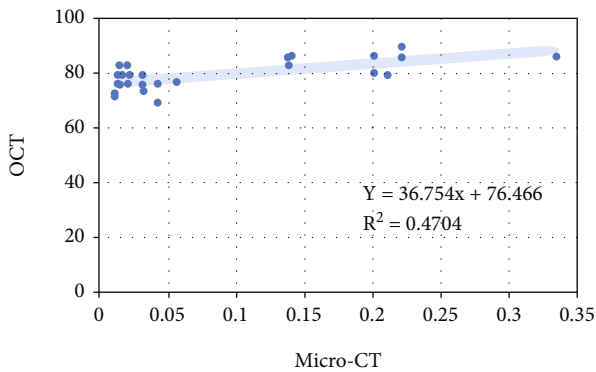


FIGURE 5: Data plots showed a significant moderate to strong correlation ($r = 0.68$) for the findings from Micro-CT and OCT.

The incorporation of resin (43%) in TheraCal without the use of any adhesive might have led to the inadequate adaptation to dentin. This was confirmed in previous studies that tested the shear bond strength of TheraCal to the dentin with and without the use of adhesive. These authors found that the bond strength of TheraCal was significantly increased by the use of adhesives (11.1 MPa) compared to no adhesive use (0.8 MPa) [52, 53]. Furthermore, in a study conducted by Camilleri et al., it was reported that there is incomplete hydration in TheraCal due to insufficient diffusion of moisture from the dentin-pulp complex inside the TheraCal [54]. The incomplete settings and inclusion of resin in TheraCal could be the cause of the low adaptation.

There was a strong correlation between the two findings from OCT and Micro-CT. This correlation was in agreement with previous studies [23, 55, 56]. The significant and strong Pearson correlation coefficient value confirms that large values of Micro-CT are associated with large OCT values. Both OCT and Micro-CT possess their own features as a method for assessment. Micro-CT is not limited by specific cavity depth for evaluation of the restoration. On the other hand, OCT has imaging depth limitations. Although OCT can show a clear image by laser penetration, it cannot be utilized in cases of a deep cavity or bulky restorations. However, this was not a problem in our experiment as the cavity depth was only 2 mm, and the reported OCT imaging depth is half to 3 mm, depending on the refractive index [57].

Moreover, the current study demonstrated that OCT produced a larger percentage number of high-intensity reflections of light compared to the volumes of the gaps produced from Micro-CT analysis. Although both findings from OCT and Micro-CT were in the same direction, full recognition of the OCT mechanism of action can help to understand this phenomenon. OCT can distinguish between the different structures that are dissimilar in composition by their difference in refractive indices and light scattering. It is well known that light is affected by changes in the refractive index. Thus, if a medium having a certain refractive index and light passes from it to another medium with a different refractive index, a part of the light will be refracted and reflected [56]. In this study, OCT was used for the detection of gaps at the interface between the pulp capping material and the surface of the

dentin. Voids, which are trapped air at this interface, can cause light reflection and increase the signal obtained from OCT. A phenomenon similar to this was previously noted by using OCT for interfacial gap detection [56, 58, 59].

Up to our knowledge, this study is one of the few studies that test the internal adaptation of the three advanced calcium silicate-based pulp capping materials together when used as indirect pulp capping agents. Also, the first study used and correlated the OCT with Micro-CT in the evaluation of the internal adaptation of pulp capping materials. The results of this study indicated that OCT has great potential for direct evaluation of dental restoration when used in combination with pulp capping materials. For this reason, OCT can be beneficial in clinical settings and allow dentists to screen and evaluate restorations during follow-up. In limitation, the moistened cotton pellet was used in this study temporarily to ensure proper maturation of Biodentine and MTA before restoration. However, further research may better utilize a fast-setting liner such as resin-modified glass ionomer to cap the MTA and Biodentine instead of the moistened cotton pellet's temporary application. Also, the interpretation of these results should also consider the limitations of an *in vitro* study compared to clinical trials.

5. Conclusion

Biodentine and MTA have comparable outcomes in terms of internal adaptation to the dentinal surface of primary teeth, and both performed better than TheraCal. Micro-CT and OCT can assess the internal adaptation of the tested dental pulp capping materials nondestructively. However, OCT has promise for the assessment of dental restorative materials in the clinical setting.

Data Availability

Data is available upon request.

Conflicts of Interest

There were no conflicts of interest.

Acknowledgments

This study is based on a thesis project conducted as part of Dr. A. Alzaharani's master's in Pediatric Dentistry at King Abdulaziz University, which was archived and published by the university library in printed and electronic formats.

References

- [1] T. J. Hilton, "Keys to clinical success with pulp capping: a review of the literature," *Operative Dentistry*, vol. 34, no. 5, pp. 615–625, 2009.
- [2] N. Akhlaghi and A. Khademi, "Outcomes of vital pulp therapy in permanent teeth with different medicaments based on review of the literature," *Dental Research Journal*, vol. 12, p. 406, 2015.
- [3] B. Jain and A. Tiku, "A Comparative Evaluation of Shear Bond Strength of Three Different Restorative Materials to Biodentine and TheraCal LC: An In-Vitro Study," *International Journal of Applied Dental Sciences*, vol. 5, no. 2, pp. 426–429, 2019.
- [4] S. Asgary and M. Ahmadyar, "Vital pulp therapy using calcium-enriched mixture: an evidence-based review," *Journal of Conservative Dentistry*, vol. 16, no. 2, pp. 92–98, 2013.
- [5] A. Gomes-Cornélio, E. Rodrigues, L. Salles et al., "Bioactivity of MTA Plus, Biodentine and an experimental calcium silicate-based cement on human osteoblast-like cells," *International Endodontic Journal*, vol. 50, no. 1, pp. 39–47, 2017.
- [6] D. Ranly and F. Garcia-Godoy, "Current and potential pulp therapies for primary and young permanent teeth," *Journal of Dentistry*, vol. 28, no. 3, pp. 153–161, 2000.
- [7] J. Camilleri and F. T. Pitt, "Mineral trioxide aggregate: a review of the constituents and biological properties of the material," *International Endodontic Journal*, vol. 39, no. 10, pp. 747–754, 2006.
- [8] E. Piva, W. Da Rosa, A. Coco et al., "Systematic review of dental pulp capping materials," *Dental Materials*, vol. 1, article e89, 2016.
- [9] M. Kunert and M. Lukomska-Szymanska, "Bio-inductive materials in direct and indirect pulp capping—a review article," *Materials*, vol. 13, no. 5, p. 1204, 2020.
- [10] M. Kaur, H. Singh, J. S. Dhillon, M. Batra, and M. Saini, "MTA versus biodentine: review of literature with a comparative analysis," *Journal of Clinical and Diagnostic Research*, vol. 11, article ZG01, 2017.
- [11] J. Camilleri, "Staining potential of Neo MTA Plus, MTA Plus, and Biodentine used for pulpotomy procedures," *Journal of Endodontics*, vol. 41, no. 7, pp. 1139–1145, 2015.
- [12] M. Gandolfi, F. Siboni, and C. Prati, "Chemical-physical properties of TheraCal, a novel light-curable MTA-like material for pulp capping," *International Endodontic Journal*, vol. 45, no. 6, pp. 571–579, 2012.
- [13] M. Cannon, N. Gerodias, A. Vieira, C. Percinoto, and R. Jurado, "Primate pulpal healing after exposure and TheraCal application," *The Journal of Clinical Pediatric Dentistry*, vol. 38, no. 4, pp. 333–337, 2014.
- [14] N. P. Menon, B. R. Varma, S. Janardhanan, P. Kumaran, A. M. Xavier, and B. S. Govinda, "Clinical and radiographic comparison of indirect pulp treatment using light-cured calcium silicate and mineral trioxide aggregate in primary molars: a randomized clinical trial," *Contemporary Clinical Dentistry*, vol. 7, no. 4, pp. 475–480, 2016.
- [15] J. Sulaiman, M. M. Yahya, and W. M. Al-Ashou, "An in-vitro scan electron microscope comparative study of dentine-Biodentine interface," *Journal of Baghdad College of Dentistry*, vol. 325, pp. 1–14, 2014.
- [16] P. Ravichandra, H. Vemisetty, K. Deepthi, S. Jayaprada Reddy, and D. Ramkiran, "Comparative evaluation of marginal adaptation of Biodentine™ and other commonly used root end filling materials-an invitro study," *Journal of Clinical and Diagnostic Research*, vol. 8, p. 243, 2014.
- [17] S. Makkar, H. Kaur, A. Aggarwal, and R. Vashisht, "A confocal laser scanning microscopic study evaluating the sealing ability of mineral trioxide aggregate, biodentine and anew pulp capping agent-theracal," *Dental Journal of Advance Studies*, vol. 3, pp. 20–25, 2015.
- [18] R. E. Going, "Microleakage around dental restorations: a summarizing review," *The Journal of the American Dental Association*, vol. 84, no. 6, pp. 1349–1357, 1972.

- [19] E. Souza-Junior, M. Souza-Régis, R. Alonso, A. Freitas, M. Sinhoreti, and L. Cunha, "Effect of the curing method and composite volume on marginal and internal adaptation of composite restoratives," *Operative Dentistry*, vol. 36, no. 2, pp. 231–238, 2011.
- [20] F. Tay and D. H. Pashley, "Water treeing—a potential mechanism for degradation of dentin adhesives," *American Journal of Dentistry*, vol. 16, no. 1, pp. 6–12, 2003.
- [21] L. Olgart, M. Brännström, and G. Johnson, "Invasion of bacteria into dentinal tubules experiments in vivo and in vitro," *Acta Odontologica Scandinavica*, vol. 32, no. 1, pp. 61–70, 1974.
- [22] C. Rengo, C. Goracci, G. Ametrano et al., "Marginal leakage of class V composite restorations assessed using microcomputed tomography and scanning electron microscope," *Operative Dentistry*, vol. 40, no. 4, pp. 440–448, 2015.
- [23] S.-H. Han, A. Sadr, J. Tagami, and S.-H. Park, "Non-destructive evaluation of an internal adaptation of resin composite restoration with swept-source optical coherence tomography and micro-CT," *Dental Materials*, vol. 32, no. 1, pp. e1–e7, 2016.
- [24] R. De Santis, F. Mollica, D. Prisco, S. Rengo, L. Ambrosio, and L. Nicolais, "A 3D analysis of mechanically stressed dentin-adhesive-composite interfaces using X-ray micro-CT," *Biomaterials*, vol. 26, no. 3, pp. 257–270, 2005.
- [25] E. Eden, A. Topaloglu-Ak, V. Cuijpers, and J. E. Frencken, "Micro-CT for measuring marginal leakage of Class II resin composite restorations in primary molars prepared in vivo," *American Journal of Dentistry*, vol. 21, no. 6, pp. 393–397, 2008.
- [26] X. Chen, V. Cuijpers, and M. Fan, "Marginal leakage of two newer glass-ionomer-based sealant materials assessed using micro-CT," *Journal of Dentistry*, vol. 38, no. 9, pp. 731–735, 2010.
- [27] X. Chen, V. Cuijpers, M. Fan, and J. Frencken, "Validation of micro-CT against the section method regarding the assessment of marginal leakage of sealants," *Australian Dental Journal*, vol. 57, no. 2, pp. 196–199, 2012.
- [28] S.-H. Han and S.-H. Park, "Micro-CT evaluation of internal adaptation in resin fillings with different dentin adhesives," *Restorative Dentistry & Endodontics*, vol. 39, no. 1, pp. 24–31, 2014.
- [29] F. A. Rizzante, R. A. Sedky, A. Y. Furuse, S. Teich, S. K. Ishikiriama, and G. Mendonça, "Validation of a method of quantifying 3D leakage in dental restorations," *The Journal of Prosthetic Dentistry*, vol. 123, no. 6, pp. 839–844, 2019.
- [30] T. A. Bakhsh, A. Sadr, Y. Shimada, A. Turkistani, R. Abuljadayel, and J. Tagami, "Does lining class-II cavities with flowable composite improve the interfacial adaptation?," *Journal of Adhesion Science and Technology*, vol. 34, no. 4, pp. 400–416, 2020.
- [31] H. Schneider, K.-J. Park, M. Häfer et al., "Dental applications of optical coherence tomography (OCT) in cariology," *Applied Sciences*, vol. 7, no. 5, p. 472, 2017.
- [32] H. Schneider, K.-J. Park, C. Rueger, D. Ziebolz, F. Krause, and R. Haak, "Imaging resin infiltration into non-cavitated carious lesions by optical coherence tomography," *Journal of Dentistry*, vol. 60, pp. 94–98, 2017.
- [33] T. A. Bakhsh, "Optical comparison between micro-CT and OCT in imaging of marginal composite adaptation: observational study," *Journal of Microscopy*, vol. 282, no. 2, pp. 136–145, 2021.
- [34] T. A. Bakhsh, A. Sadr, Y. Shimada, J. Tagami, and Y. Sumi, "Non-invasive quantification of resin-dentin interfacial gaps using optical coherence tomography: validation against confocal microscopy," *Dental Materials*, vol. 27, no. 9, pp. 915–925, 2011.
- [35] T. A. Bakhsh, J. Tagami, A. Sadr et al., "Effect of light irradiation condition on gap formation under polymeric dental restoration; OCT study," *Zeitschrift für Medizinische Physik*, vol. 30, no. 3, pp. 194–200, 2020.
- [36] T. A. Bakhsh, "Ultrastructural features of dentinoenamel junction revealed by focused gallium ion beam milling," *Journal of Microscopy*, vol. 264, no. 1, pp. 14–21, 2016.
- [37] T. M. Mohan, K. Sudha, C. Shoba, T. Sravanthi, B. S. Yadav, and E. S. Rani, "Comparative evaluation of sealing ability of ProRoot MTA, Biodentine, and bone cement in the repair of furcation perforation—an in vitro study," *Indian Journal of Dental Advancements*, vol. 10, pp. 176–181, 2018.
- [38] K. Brenes-Valverde, E. Conejo-Rodríguez, J. R. Vega-Baudrit, M. Montero-Aguilar, and D. Chavarría-Bolaños, "Evaluation of microleakage by gas permeability and marginal adaptation of MTA and biodentine™ apical plugs: in vitro study," *Odovtos-International Journal of Dental Sciences*, vol. 20, pp. 57–67, 2018.
- [39] M. Kaup, E. Schäfer, and T. Dammaschke, "An in vitro study of different material properties of Biodentine compared to ProRoot MTA," *Head & Face Medicine*, vol. 11, pp. 1–8, 2015.
- [40] T. A. Bakhsh, N. H. Altouki, L. S. Baesa et al., "Effect of self-etch adhesives on the internal adaptation of composite restoration: a CP-OCT Study," *Odontology*, vol. 107, no. 2, pp. 165–173, 2019.
- [41] H. Akoglu, "User's guide to correlation coefficients," *Turkish Journal of Emergency Medicine*, vol. 18, no. 3, pp. 91–93, 2018.
- [42] A. A. AlHabdhan, "Review of microleakage evaluation tools," *Journal of International Oral Health*, vol. 9, p. 141, 2017.
- [43] J. G. Jones, A. Grieve, and C. Youngson, "Marginal leakage associated with three posterior restorative materials," *Journal of Dentistry*, vol. 16, no. 3, pp. 130–134, 1988.
- [44] E. A. El Ashiry, N. M. Alamoudi, N. M. Farsi et al., "The use of micro-computed tomography for evaluation of internal adaptation of dental restorative materials in primary molars: an in-vitro study," *International Journal of Pharmaceutical Research & Allied Sciences.*, vol. 8, 2019.
- [45] C. A. Carrera, C. Lan, D. Escobar-Sanabria et al., "The use of micro-CT with image segmentation to quantify leakage in dental restorations," *Dental Materials*, vol. 31, no. 4, pp. 382–390, 2015.
- [46] Y. Shimada, A. Sadr, Y. Sumi, and J. Tagami, "Application of optical coherence tomography (OCT) for diagnosis of caries, cracks, and defects of restorations," *Current Oral Health Reports*, vol. 2, no. 2, pp. 73–80, 2015.
- [47] F. Leye Benoist, F. Gaye Ndiaye, A. W. Kane, H. M. Benoist, and P. Farge, "Evaluation of mineral trioxide aggregate (MTA) versus calcium hydroxide cement (Dycal®) in the formation of a dentine bridge: a randomised controlled trial," *International Dental Journal*, vol. 62, no. 1, pp. 33–39, 2012.
- [48] J. J. Lee, A. Nettey-Marbell, A. Cook Jr., L. A. Pimenta, R. Leonard, and A. V. Ritter, "Using extracted teeth for research: the effect of storage medium and sterilization on dentin bond strengths," *The Journal of the American Dental Association.*, vol. 138, no. 12, pp. 1599–1603, 2007.
- [49] M. Juez, M. Ballester, and E. Berástegui, "In vitro comparison of apical microleakage by spectrophotometry in simulated

- apexification using White Mineral Trioxide Aggregate, Total-Fill Bioceramic Root Repair material, and BioDentine,” *Journal of Conservative Dentistry*, vol. 22, p. 237, 2019.
- [50] S. Malhotra and M. N. Hegde, “Analysis of marginal seal of ProRoot MTA, MTA angelus biodentine, and glass ionomer cement as root-end filling materials: an in vitro study,” *Journal of Oral Research and Review*, vol. 7, no. 2, p. 44, 2015.
- [51] N. Z. Arandi and T. Rabi, “TheraCal LC: from biochemical and bioactive properties to clinical applications,” *International Journal of Dentistry*, vol. 2018, 6 pages, 2018.
- [52] Y. Wang and B. Suh, “Effects of adhesives on calcium-release, pH and bonding of TheraCal,” *Journal of Dental Research*, vol. 91, 2012.
- [53] Y. K. Kim, M.-H. Hong, and T.-Y. Kwon, “Dentin bonding of TheraCal LC calcium silicate containing an acidic monomer: an in vitro study,” *Materials*, vol. 13, no. 2, p. 293, 2020.
- [54] J. Camilleri, “Hydration characteristics of Biodentine and Theracal used as pulp capping materials,” *Dental Materials*, vol. 30, no. 7, pp. 709–715, 2014.
- [55] P. Majkut, A. Sadr, Y. Shimada, Y. Sumi, and J. Tagami, “Validation of optical coherence tomography against micro-computed tomography for evaluation of remaining coronal dentin thickness,” *Journal of Endodontics*, vol. 41, no. 8, pp. 1349–1352, 2015.
- [56] A. Nazari, A. Sadr, M. A. Saghiri et al., “Non-destructive characterization of voids in six flowable composites using swept-source optical coherence tomography,” *Dental Materials*, vol. 29, no. 3, pp. 278–286, 2013.
- [57] Y. Shimada, A. Sadr, M. F. Burrow, J. Tagami, N. Ozawa, and Y. Sumi, “Validation of swept-source optical coherence tomography (SS-OCT) for the diagnosis of occlusal caries,” *Journal of Dentistry*, vol. 38, no. 8, pp. 655–665, 2010.
- [58] P. Makishi, Y. Shimada, A. Sadr, J. Tagami, and Y. Sumi, “Non-destructive 3D imaging of composite restorations using optical coherence tomography: marginal adaptation of self-etch adhesives,” *Journal of Dentistry*, vol. 39, no. 4, pp. 316–325, 2011.
- [59] A. Nazari, A. Sadr, Y. Shimada, J. Tagami, and Y. Sumi, “3D assessment of void and gap formation in flowable resin composites using optical coherence tomography,” *The Journal of Adhesive Dentistry*, vol. 15, 2013.