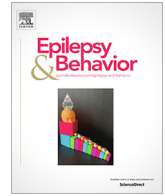




Since January 2020 Elsevier has created a COVID-19 resource centre with free information in English and Mandarin on the novel coronavirus COVID-19. The COVID-19 resource centre is hosted on Elsevier Connect, the company's public news and information website.

Elsevier hereby grants permission to make all its COVID-19-related research that is available on the COVID-19 resource centre - including this research content - immediately available in PubMed Central and other publicly funded repositories, such as the WHO COVID database with rights for unrestricted research re-use and analyses in any form or by any means with acknowledgement of the original source. These permissions are granted for free by Elsevier for as long as the COVID-19 resource centre remains active.



## The safety and efficacy of modifying the admission protocol to the epilepsy monitoring unit in response to the COVID-19 pandemic



Fawzi Babtain\*, Daniah Atteyah, Haneen Milyani, Tasnim Banjer, Khalid Alqadi, Saleh Baesa, Youssef Al Said

Department of Neurosciences, King Faisal Specialist Hospital and Research Center, Jeddah, Saudi Arabia

### ARTICLE INFO

#### Article history:

Received 25 June 2021

Revised 10 July 2021

Accepted 16 July 2021

Available online 24 July 2021

#### Keywords:

Anti-seizure medications

COVID-19

Elective admission

Epilepsy monitoring unit

Seizure

Epilepsy

### ABSTRACT

**Purpose:** The coronavirus disease 2019 (COVID-19) pandemic has impacted admission to epilepsy monitoring units (EMUs) for classification and presurgical evaluation of patients with refractory epilepsy. We modified the EMU admission protocol via anti-seizure medications (ASM) withdrawal implemented one day before admission; thus, we aimed to evaluate the efficacy and safety of this modified protocol.

**Methods:** In January 2021, we initiated ASM tapering 24 h before—rather than on the first day after—EMU admission, contrasting with the previous protocol. We retrospectively reviewed EMU admissions between January and April of 2018, 2019, and 2021, and identified the time required to record the first seizure, and EMU yield to confirm or change the epilepsy classification. We also evaluated the safety of the modified protocol, by monitoring the seizure frequency for up to 5 months after the discharge from the hospital.

**Results:** One hundred four patients were included (mean age: 30 years, men: 43%); excluding a longer disease duration and abundance of normal routine electro-encephalogram (EEG) in patients admitted before the pandemic, no differences were observed in patients' characteristics. On average, it took 41 h and 21 h to record the first seizure using the standard and modified protocols, respectively ( $p < 0.001$ , 95% CI: 10–30). Other characteristics were investigated both before and after the COVID-19 pandemic, and epilepsy classifications were confirmed twice using the modified protocol (OR = 2.4,  $p = 0.04$ , 95% CI: 1.1–5.5). Multivariate regression analysis confirmed the shorter time to record the first seizure using the modified admission protocol (23 h less,  $p < 0.001$ ; 95% CI: 12–34). Finally, 36 (86%) patients admitted during the pandemic exhibited no increase in seizure frequency after the discharge from the hospital.

**Conclusions:** Initiating ASM withdrawal one day before EMU admission was deemed to be an efficient and safe way to confirm epilepsy classification and significantly decrease the length of hospital stay. Ultimately, this will shorten the long waiting list for EMU admission created by the COVID-19 pandemic.

© 2021 Elsevier Inc. All rights reserved.

### 1. Introduction

Admission to the epilepsy monitoring unit (EMU) is a crucial step in identifying the seizure generator in drug-resistant epilepsy, as well as classifying epilepsy and other spells [1–3]. Along with other hospital procedures, elective admissions were significantly minimized due to the COVID-19 pandemic [4–6], leading to a dras-

tic increase in the already long waiting time for admission to the EMU in our hospital.

Withdrawal of anti-seizure medications (ASM)—the standard approach in all epilepsy centers upon admission to the EMU—helps to record seizures, identify seizure onset zone (SOZ), classify seizure type, ensure patient safety, and minimize complications related to seizures [7,8]. EMU admission protocols have various ASM withdrawal methods that are gradually initiated following admission to the unit; the average length of EMU stay to achieve the goal of admission is generally less than a week [9,10], despite the speed of the withdrawal [11]. The time to record the first seizure remains unknown; however, the exact time required to reach the admission objective is always uncertain.

*Abbreviations:* ASM, anti-seizure medication; COVID-19, coronavirus disease 2019; EMU, epilepsy monitoring unit; PWE, patients with epilepsy; SOZ, seizure onset zone.

\* Corresponding author at: Department of Neurosciences, King Faisal Specialist Hospital and Research Centre, Al Rawdah Road, P.O. Box 40047, Jeddah 21499, Saudi Arabia.

E-mail address: [fbabtain@kfshrc.edu.sa](mailto:fbabtain@kfshrc.edu.sa) (F. Babtain).

Facing the long waiting list following the reopening of elective hospital admissions in late 2020, and in response to the COVID-19 pandemic, we modified the ASM withdrawal protocol in adult patients scheduled for EMU admission in our hospital. Starting in January 2021, ASM withdrawal was initiated one day before admission, but other admission measures remained unchanged. In this study, we aimed to evaluate whether our modified admission protocol would safely aid in recording seizures earlier than during the pre-COVID-19 era, impact the yield of EMU to confirm or add new knowledge of epilepsy classification, and identify SOZ.

## 2. Materials and methods

### 2.1. Patients and data acquisition

We reviewed patients admitted to the EMU in our hospital between January and April of 2018, 2019, and 2021; 2020 was excluded, since EMU admissions were paused in mid-March of that year. Inclusion criteria were: an age > 13 years, known or suspected cases of epilepsy, who are on at least one ASM. We excluded patients admitted for the classification of psychogenic nonepileptic seizures. In 2018 and 2019, the admission protocol included initiating withdrawal of ASM the second day after admission to the EMU, by 50% reduction of all medications, and withholding all medications in day three. Starting in January 2021, we initiated ASM withdrawal from home, one day before admission, where patients were requested to reduce the morning doses of all medications by 50%, and to hold all the evening medications the night before admission. For those who were reluctant to reduce their ASM from home, we requested them to hold all the evening medications the night before admission. We considered patients admitted in 2018 and 2019 as the “pre-CVOID” group and those admitted in 2021 as the “post-COVID” group, ensuring that no ASMs were administered following EMU admission for patients in the post-COVID group. In addition to early ASM withdrawal, we followed similar EMU admission protocols in both groups, and encouraged sleep deprivation. According to standard procedure, rescue therapy was used after the occurrence of three or more seizures, or status epilepticus [12]. Since July 2020, all patients and their companions were required to undergo a COVID-19 test within 72 h before admission; only those with negative COVID-19 PCR results were admitted to the unit. We collected patients’ data, including basic demographics, epilepsy classifications, disease duration, number of ASMs, seizure frequency, longest seizure freedom, and the last seizure recorded before EMU admission. We also determined the number of seizures recorded and use of rescue therapy in EMU. We assessed the EMU yield of both groups to determine whether EMU admission confirmed the pre-EMU hypothesis on the seizure generator, or added new knowledge to identify the seizure generator. We also assessed whether EMU admission failed to add any knowledge related to identifying the SOZ.

### 2.2. Study outcomes and safety

We determined the time required to record the first seizure, the frequency of rescue therapy use, the number of seizures recorded, and seizure-related complications in both groups. To further assess the safety of the modified EMU admission protocol, we identified seizure patterns and frequencies up to 5 months after EMU discharge in the post-COVID group. The hospital stay was determined once enough seizures were recorded to establish a satisfactory knowledge about the seizure generator in each patient. We determined that recording three seizures will be considered satisfactory to classify epilepsy and identify SOZ [13]. Yet, we managed each patient on an individual basis, in order to achieve the goal of

EMU admission. Our EMU admission protocol suggests seven days of “length of stay” in our hospital, based on in-hospital withdrawal of ASM. This study was approved by our institutional Review Board (IRB) and informed consent was waived because of the nature of the study.

### 2.3. Statistical analysis

We used R studio for data analysis [14]. We used the mean, median, standard deviation, and range to describe numerical data, and percentages to describe categorical variables. We performed Student’s *t*-test, analysis of variance (ANOVA), and Chi-squared test for binary statistical analyses, and multiple linear and logistic regression analyses for multivariable analysis. We calculated the 95% confidence intervals, and interpreted the *p*-values according to the American statistical association guidelines [15].

## 3. Results

During the study period, 131 patients were admitted between January and April 2018, 2019, and 2021; only 104 patients met the study criteria and were included in the analysis. Sixty-two patients were admitted during the pre-COVID period, and 42 during the post-COVID period. There were 45 (43%) men, the mean age

**Table 1**  
Patients’ basic characteristics.

	Pre-COVID (N = 62)	Post-COVID (N = 42)	P value
Men (%)	24 (39%)	21 (50%)	0.3
Age (SD) <sup>‡</sup>	31 (11 years)	28 (8 years)	0.1
Age at diagnosis	14 (10 years)	15 (9 years)	0.5
Disease duration in years (SD)	17 (11 years)	13 (9 years)	<b>0.03</b>
Number of ASMs <sup>§</sup>	2	2	0.6
The presence of risk factor(s)	25 (40%)	20 (48%)	0.5
Diagnosis			
TLE	19 (31%)	14 (33%)	0.9
FLE	12 (19%)	13 (31%)	0.3
Posterior neocortical epilepsy	5 (9%)	5 (12%)	0.9
Multifocal epilepsy	4 (6%)	2 (5%)	0.7
Unclassified epilepsy	13 (21%)	6 (14%)	0.6
Primary generalized epilepsy	8 (13%)	2 (5%)	0.3
Seizure frequency			
Daily	4 (6%)	4 (10%)	0.7
2–4 seizures a month	39 (63%)	25 (60%)	0.8
Once every 3–6 months	14 (23%)	10 (24%)	0.9
Once every 12–18 months	4 (6%)	3 (7%)	0.9
Longest seizure freedom (months)	6 (15 years)	5 (10 years)	0.6
Last seizure prior to admission to EMU**			
Within a month	41 (66%)	31 (74%)	0.5
More than a month	21 (34%)	11 (26%)	
Baseline EEG			
Normal or no IEDs <sup>††</sup>	34 (55%)	12 (29%)	<b>0.02</b>
Focal IEDs	22 (35%)	23 (55%)	0.9
Multifocal IEDs	5 (8%)	6 (14%)	0.8
Generalized IEDs	1 (2%)	1 (2%)	0.9
MRI brain findings			
Normal	24 (39%)	13 (31%)	0.9
MTS <sup>‡‡</sup>	14 (23%)	12 (29%)	0.8
MCD <sup>§§</sup>	3 (5%)	7 (17%)	0.3
Vascular lesion	3 (5%)	1 (2%)	0.8
Tumor	3 (5%)	3 (7%)	0.3
Encephalomalacia	4 (6%)	2 (5%)	0.9
Other	11 (18%)	4 (10%)	0.5

<sup>‡</sup>Standard deviation.

<sup>§</sup>Anti-seizure medications.

<sup>\*\*</sup>Epilepsy monitoring unit.

<sup>††</sup>Interictal epileptic discharges.

<sup>‡‡</sup>Mesial temporal sclerosis.

<sup>§§</sup>Malformation of cortical development.

and disease duration of the cohort were 30 years (SD = 10 years; range: 14–54 years) and 14 years (SD = 11 years; range: 6 months–48 years), respectively. Table 1 summarizes the patient demographics. Apart from the differences in disease duration and frequency of normal or – no interictal discharges – in routine EEG between the two groups, similar characteristics were observed in both groups. Eighty-one patients (78%) developed seizures during their hospital stay, lasting between 12 h and 10 days: 45 (73%) in the pre-COVID group, and 36 (86%) in the post-COVID group ( $p = 0.1$ ). A total of 475 seizures were recorded, of which slightly more than half (240 seizures) were in the post-COVID group (18 (29%) and 15 (36%) patients in the pre-COVID and post-COVID groups, respectively ( $p = 0.6$ )). Similarly, there was no difference in the distribution of focal to bilateral tonic-clonic seizures (44% vs. 60%;  $p = 0.2$ ), or median number of seizures between the two groups (4 vs. 6;  $p = 0.1$ ). Conversely, rescue therapy with either lorazepam or diazepam was used in both groups in no particular distribution (35% vs. 21%, respectively;  $p = 0.2$ ). One patient in each group developed shoulder dislocation; however, no patient in either group developed status epilepticus requiring intravenous loading of ASMs, a transfer to the intensive care unit (ICU), or anesthesia. None of the patients in post-COVID group developed seizures while tapering ASM at home.

### 3.1. Time to record the first seizure

Seizures during the first 24 h were recorded eight times more frequently in the post-COVID group than in the pre-COVID group (adjusted OR = 8.4,  $p < 0.001$ , 95% CI: 2.7–30.2); on average, the first seizure was also recorded 20 h sooner in the post-COVID group (21 vs. 41 h,  $p < 0.001$ , 95% CI: 10–30; Fig. 1). Multivariate regression analysis confirmed these results, adjusted for clinical, radiological, and EEG findings (11 vs. 30 h,  $p < 0.01$ , 95% CI: 8–31). After excluding patients admitted with no seizures recorded, sensitivity analysis revealed a significant difference between the pre-COVID and post-COVID groups (50 vs. 31 h,  $p < 0.001$ , 95% CI: 11–31). This significant difference in the time to record the first seizure demonstrates that the post-COVID-19 EMU admission protocol appears to facilitate the utilization of EMU to document the first seizure, which could ultimately assist in identified SOZ. The

time to record the first seizure remained relatively short during the post-COVID period, irrespective of seizure frequency, recorded seizure type, or how early seizures were recorded before EMU admission (Fig. 2). Furthermore, there was no difference in the median number of seizures recorded before and after the modified admission protocol (4 vs. 6 seizures, respectively;  $p = 0.13$ ). The observation mentioned above was reassuring, as the modified EMU admission protocol appeared safe, demonstrating no increase in the frequency of seizures recorded in EMU.

### 3.2. EMU yield

We were able to confirm the classification of epilepsy in up to three times more cases in the post-COVID group than in the pre-COVID group (unadjusted OR = 2.4,  $p = 0.04$ , 95% CI: 1.1–5.5), even when adjusted for age, sex, length of stay, number of ASMs, and the last seizure before admission to EMU (adjusted OR = 3.4,  $p$ -value = 0.02, 95% CI: 1.2–10.4; Fig. 3). We could also lateralize and localize the SOZ two-fold in the post-COVID group; however, this was not statistically significant (OR = 2,  $p = 0.08$ , 95% CI: 0.9–4.5). Therefore, confirming epilepsy classification was significantly enhanced after using the modified EMU protocol. Gaining a new knowledge on the pre-EMU hypothesis for epilepsy type was equally observed in both groups, as well as failing to identify the SOZ (Fig. 3).

### 3.3. Length of hospital stay

The average length of stay in the post-COVID group was approximately 3 days, compared with 5 days in the pre-COVID group ( $p < 0.01$ , 95% CI: 1–2.2). The modified EMU admission protocol led to a significantly shorter hospital stay, which can be considered an effective way to minimize unnecessary hospital-acquired infections, including COVID-19.

### 3.4. Seizure patterns following hospital discharge

The patients in the post-COVID group were followed up for 1–5 months after discharge from the hospital, during which we inquired regarding seizure patterns. Among the 42 patients in this

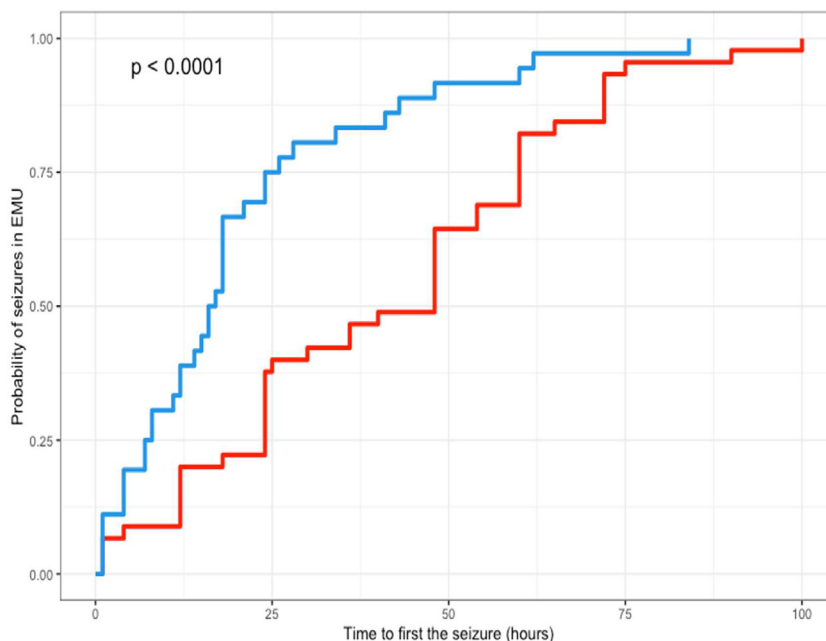
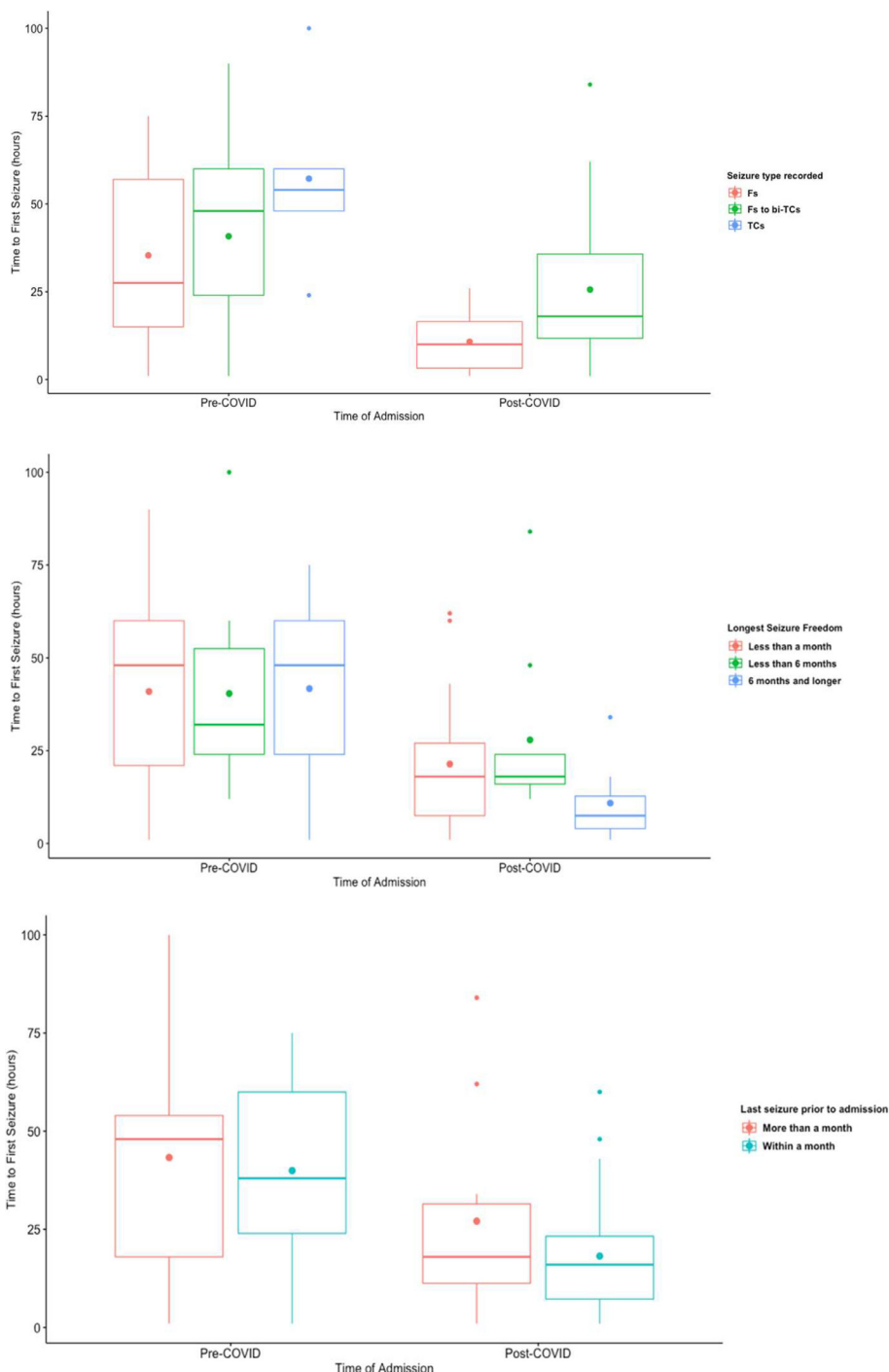


Fig. 1. Kaplan–Meier curve showing the time to record the first seizure before and after COVID-19 modified admission protocol.

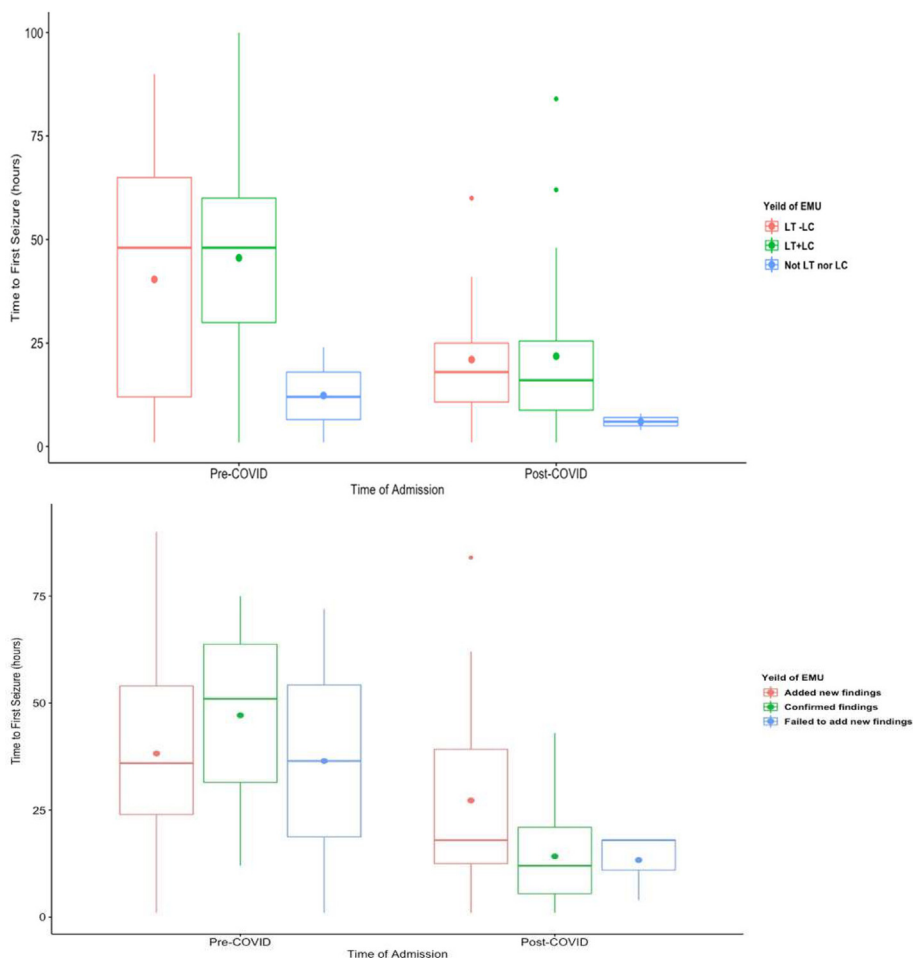


**Fig. 2.** The time (hours) required to record first seizure according to patient's characteristics (TCs: tonic-clonic seizure, Fs: focal seizures, Fs to bi-TCs: focal to bilateral tonic-clonic seizures).

group, 21 (50%) reported no change in seizure frequency, and 15 (36%) reported less frequent seizures. Only 6 (14%) patients reported an increase in seizure frequency; therefore, about 85% of the post-COVID group exhibited no increase in seizure frequency when using the modified EMU admission protocol. We also found that up to 38% of patients remained seizure free after discharge from the hospital. Finally, there was no association between seizure recurrence after hospital discharge and the use of rescue therapy during EMU admission (OR = 5.9,  $p = 0.1$ , 95% CI: 0.9–11.5). The presence of seizures within a month before EMU admission was also not associated with seizure recurrence after EMU discharge (OR = 1.1,  $p = 0.9$ , 95% CI: 0.2–4.2).

#### 4. Discussion

Undoubtedly, the COVID-19 pandemic caused an unprecedented disruption of the continuum of care for those with chronic physical and mental disorders worldwide, altering the delivery of standard care and adding more challenges to those in need. This encouraged care providers to implement further action, monitor these challenges, and develop an action plan that ensures adequate care [6,16–19]. Some conditions are considerably affected by various aspects; for example, anxiety, depression, sleep disturbances, and seizures are increased in patients with epilepsy (PWE) [20–23]. Epilepsy surgery was therefore also impacted by this health



**Fig. 3.** The yield of EMU before and after COVID-19 modified admission protocol (LT-LC: lateralized but not localized, LT + LC: lateralize and localize, Not LT nor LC: not lateralized nor localized.).

crisis [24], as many PWE feared contracting the infection and thus avoided attending hospital procedures.

By contrast, the management of PWE through telemedicine has dramatically evolved during the pandemic, leading to outstanding and efficient management with minimal compromise of patient care [24,25]. Reports also demonstrate the cost-effectiveness of managing PWE via telemedicine during the pandemic [26–28]. A rather creative approach to managing PWE evolved early during the pandemic, with the notion of facing the unknown regarding the duration and overall magnitude of the COVID-19 pandemic’s impact on healthcare [29,30].

Elective epilepsy-related procedures and admissions encountered more challenges, since hospitals were in lockdown and unseen cancellations of these procedures occurred. For instance, EEG was restricted to patients with acute seizures, and for the diagnosis and prognosis of the critically ill. The COVID-19 pandemic also significantly impacted the use of continuous EEG monitoring, and the invasive EEG recording for the pre-surgical cases with epilepsy [31,32]. Some experts recommended avoiding outpatient EEGs during the pandemic [33]. On the other hand, guidelines were also proposed, by different neurophysiology societies, in order to prioritize EEG use, protect patients and healthcare professionals, and to maintain a high-quality EEG recording. These recommendations should guide clinicians to safely utilize EEG, and other neurophysiological procedures, during the pandemic [34–36]. EMU admissions were panned in most epilepsy centers, with no strategy to cope with the pandemic other than canceling admis-

sions to the unit. We blocked our EMU and epilepsy surgeries from mid-March 2020, and slowly recommenced in early July 2020. Our waiting list surpassed 400 days, which caused frustration for both patients and epileptologists in our institute. As a result of the service halt, we modified our EMU admission protocol and initiated ASM withdrawal from home; following admission, this was found to record seizures earlier, effectively shorten length of hospital stay, and significantly increase yield to confirm epilepsy classification.

Although no protocols or strategies exist regarding when or how to initiate the stepwise lowering of ASMs in EMU, the consensus is to individually taper medication, considering the patient and medication factors [37,38]. Epileptologists tend to initiate ASM tapering in most patients within 24 h of admission, with recent reports showing an association between the seizure type recorded, and the percentage reduction in ASM dose during the first 24 h [39]. In our study, we found no differences in the seizure types recorded between the pre-COVID and post-COVID groups. In previous studies, the time to record the first seizure with hospital tapering was similar to ours when using the standard admission protocol [39]. This confirmed that a shorter time to record the first seizure was obtained using our modified admission protocol, rather than our standard protocol or that of previous studies. Thus, with ASM withdrawal, seizures will likely be recorded during a defined period to confirm the preadmission hypothesis or goals, with a shorter hospital stay [40].



To the best of our knowledge, our results are the first to explore the effects of the pandemic on the effective and safe use of EMU. We were able to safely record significantly more seizures within the first 24 h of admission, than the admissions during 2018 and 2019 combined. Confirming epilepsy classification more than three times added another advantage to our modified admission protocol. Additionally, we achieved the goals of admission to EMU in a shorter amount of time than the standard EMU admission protocol, which should minimize the patient's risk for hospital-acquired infections during the pandemic. Moreover, our modified protocol was a cost-effective approach from a quality point of view, although this was not the aim of this study. Researchers in the Netherlands initiated home tapering of ASMs up to 4 weeks before EMU admission, with less than 2% risk of status epilepticus demonstrated in that group, and high efficacy to record seizures [41]. Similar to our modified protocol, the Dutch approach was safe and effective. An increase in seizure frequency was not induced during or after our modified EMU admission, for up to 5 months. Likewise, the use of rescue medications remained similar to the pre-COVID-19 era. Thus, we recommend initiating ASM withdrawal from home in adult patients admitted to the EMU for epilepsy classification and presurgical evaluation.

Our study had some limitations; although we provided robust findings regarding the time to record the first seizure following home ASM withdrawal, we admitted a relatively small number of participants during the COVID-19 pandemic. This may be related to the short study duration; thus, further studies on a larger scale may replicate our observations. We also faced difficulties regarding patients' refusal of admission during the pandemic. Hypothetically, this could influence the demographics of patients enrolled in 2021, compared with those admitted in 2018 and 2019, as desperate patients, with frequent seizures, or those awaiting epilepsy surgery, would be more eager to be admitted, and may overlook the risk of acquiring COVID-19 during the elective EMU admission. Additionally, excluding patients infected with COVID-19 during the preadmission screening may also have had an impact on the population studied. The modified protocol should be applied following the end of the pandemic to address these concerns when all eligible PWE are admissible to the EMU.

## 5. Conclusions

EMU admission remains a safe investigative tool for evaluating PWE [8]; however, ASM withdrawal is the ultimate step toward recording seizures during EMU stay. Amid the pandemic, our modified EMU admission protocol added more value in utilizing EMU efficiently and safely, with a shorter hospital stay and higher yield to confirm epilepsy classification in PWE.

## Declaration of Competing Interest

The authors declare that they have no known competing financial interests or personal relationships that could have appeared to influence the work reported in this paper.

## Acknowledgements

We would like to thank Mrs. Amani Badokhon to co-ordinate the admission to EMU, and arranging pre-admission COVID-19 testing.

## References

- [1] Aljafan BN, Alfayez SM, Alanazy MH, Alazwary N, Alohal SM, Muayqil T. Epilepsy monitoring units in Saudi Arabia: Where do we stand compared to developed countries? *Neurosciences* 2018;23:244–9.
- [2] Fahoum F, Omer N, Kipervasser S, Bar-Adon T, Neufeld M. Safety in the epilepsy monitoring unit: a retrospective study of 524 consecutive admissions. *Epilepsy Behav* 2016;61:162–7.
- [3] Langenbruch L, Kinney MO, Diehl B, Kovac S. Seizure semiology and testing in the EEG monitoring unit. *Zeitschrift Fur Epileptologie* 2021;34:102–7.
- [4] Martin IB, Brodke DS, Wilson FA, Chaiyakunapruk N, Nelson RE. The impact of halting elective admissions in anticipation of a demand surge due to the coronavirus pandemic (COVID-19). *Med Care* 2021;59:213–9.
- [5] Chudasama YV, Gillies CL, Zaccardi F, Coles B, Davies MJ, Seidu S, et al. Impact of COVID-19 on routine care for chronic diseases: a global survey of views from healthcare professionals. *Diab Metabol Syndrome-Clin Res Rev* 2020;14:965–7.
- [6] Al Omari A, Kanaan Y, Nuseir A, Al-ashqar R, Al-Balas H, Hamarneh O, et al. The impact of COVID-19 outbreak on otolaryngology practice, Jordanian experience: a qualitative study. *Ann Med Surg* 2021;62:435–9.
- [7] Noppornprom C, Yadee T. Quality and safety in adult epilepsy monitoring unit of Prasat Neurological Institute Epilepsy Center, Thailand. *Epilepsia* 2019;60:201–2.
- [8] Cox F, Reus E, Widman G, Zwemmer J, Visser G. Epilepsy monitoring units can be safe places; a prospective study in a large cohort. *Epilepsy Behav* 2020;102:106718.
- [9] Yen DJ, Chen C, Shih YH, Guo YC, Liu LT, Yu HY, et al. Antiepileptic drug withdrawal in patients with temporal lobe epilepsy undergoing presurgical video-EEG monitoring. *Epilepsia* 2001;42:251–5.
- [10] Henning O, Baftiu A, Johannessen SI, Landmark CJ. Withdrawal of antiepileptic drugs during presurgical video-EEG monitoring: an observational study for evaluation of current practice at a referral center for epilepsy. *Acta Neurol Scand* 2014;129:243–51.
- [11] Rizvi SAA, Hernandez-Ronquillo L, Wu A, Téllez Zenteno JF. Is rapid withdrawal of anti-epileptic drug therapy during video EEG monitoring safe and efficacious? *Epilepsy Res* 2014;108:755–64.
- [12] Di Gennaro G, Picardi A, Sparano A, Mascia A, Meldolesi GN, Grammaldo LG, et al. Seizure clusters and adverse events during pre-surgical video-EEG monitoring with a slow anti-epileptic drug (AED) taper. *Clin Neurophysiol* 2012;123:486–8.
- [13] Struck AF, Cole AJ, Cash SS, Westover MB. The number of seizures needed in the EMU. *Epilepsia* 2015;56:1753–9.
- [14] R Core Team. A language and environment for statistical computing. R foundation for statistical computing. 2020.
- [15] Wasserstein RL, Lazar NA. The ASA's statement on p-values: context, process, and purpose. *Am Stat* 2016;70:129–31.
- [16] Antkowiak PS, Cocchi MN, Chiu DT, Sanchez LD. Who should we treat: elective surgical admissions or patients with COVID-19? *Am J Managed Care* 2020;26:423–4.
- [17] Colais P, Cascini S, Balducci M, Agabiti N, Davoli M, Fusco D, et al. Impact of the COVID-19 pandemic on access to healthcare services amongst patients with multiple sclerosis in the Lazio region, Italy. *Eur J Neurol* 2021;1–8.
- [18] Macdonald N, Clements C, Sobti A, Rossiter D, Unnithan A, Bosanquet N. The building backlog of NHS elective cases post Covid-19. *Br J Surg* 2020;107:E377–8.
- [19] Strizović S, Vojvodić N, Kovačević M, Pejović A, Bukumirić Z, Sokić D, et al. Influence of COVID-19 pandemic on quality of life in patients with epilepsy - follow-up study. *Epilepsy Behav: E&B* 2021;121:108026.
- [20] Friedrich L, Sruk A, Bielen I. Responses of people with epilepsy to the COVID-19 pandemic in the time of national lockdown. *Epilepsy Behav* 2021;116:107790.
- [21] Assenza G, Lanzone J, Brigo F, Coppola A, Di Gennaro G, Di Lazzaro V, et al. Epilepsy care in the time of COVID-19 pandemic in Italy: risk factors for seizure worsening. *Front Neurol* 2020;11:737.
- [22] Thorpe J, Ashby S, Hallab A, Ding D, Andraus M, Dugan P, et al. Evaluating risk to people with epilepsy during the COVID-19 pandemic: preliminary findings from the COV-E study. *Epilepsy Behav* 2021;115:107658.
- [23] Sureka RK, Gaur V, Gupta M. Impact of COVID-19 on people suffering with epilepsy. *Ann Indian Acad Neurol* 2021;24:51–5.
- [24] Datta P, Barrett W, Bentzinger M, Jasinski T, Jayagopal LA, Mahoney A, et al. Ambulatory care for epilepsy via telemedicine during the COVID-19 pandemic. *Epilepsy Behav* 2021;116:107740.
- [25] Niimi K, Fujimoto A, Sato K, Enoki H, Okanishi T. Patients with epilepsy who underwent epilepsy surgery during the COVID-19 pandemic showed less depressive tendencies. *Front Neurol* 2021;12:677828.
- [26] Banks J, Corrigan D, Grogan R, El-Naggar H, White M, Doran E, et al. LoVE in a time of COVID: Clinician and patient experience using telemedicine for chronic epilepsy management. *Epilepsy Behav* 2021;115:107675.
- [27] Kristoffersen ES, Sandset EC, Winsvold BS, Faiz KW, Storstein AM. Experiences of telemedicine in neurological out-patient clinics during the COVID-19 pandemic. *Ann Clin Transl Neurol* 2021;8:440–7.
- [28] Willems LM, Balciik Y, Noda AH, Siebenbrodt K, Leimeister S, McCoy J, et al. SARS-CoV-2-related rapid reorganization of an epilepsy outpatient clinic from personal appointments to telemedicine services: A German single-center experience. *Epilepsy Behav* 2020;112:107483.
- [29] Fortini S, Espeche A, Caraballo R. Telemedicine and epilepsy: A patient satisfaction survey of a pediatric remote care program. *Epilepsy Res* 2020;165:106370.
- [30] Brigo F, Bonavita S, Leocani L, Tedeschi G, Lavorgna L. Telemedicine and the challenge of epilepsy management at the time of COVID-19 pandemic. *Epilepsy Behav* 2020;110:107164.

- [31] Zafar SF, Khozein RJ, LaRoche SM, Westover MB, Gilmore EJ. Impact of the COVID-19 pandemic on continuous EEG utilization. *J Clin Neurophysiol* 2020;1–8.
- [32] Krysl D, Beniczky S, Franceschetti S, Arzimanoglou A. The COVID-19 outbreak and approaches to performing EEG in Europe. *Epileptic Disorders* 2020;22:548–54.
- [33] Grippo A, Assenza G, Scarpino M, Broglio L, Cilea R, Galimberti CA, et al. Electroencephalography during SARS-CoV-2 outbreak: practical recommendations from the task force of the Italian Society of Neurophysiology (SINC), the Italian League Against Epilepsy (LICE), and the Italian Association of Neurophysiology Technologists (AITN). *Neurol Sci* 2020;41:2345–51.
- [34] Appendino JP, Baker SK, Chapman KM, Dykstra T, Hussein T, Jones M-L, et al. Practice guidelines for Canadian neurophysiology laboratories during the COVID-19 pandemic. *Can J Neurol Sci* 2021;48:25–30.
- [35] San-Juan D, Jiménez CR, Ximenez Camilli C, de la Cruz Reyes LA, Galindo EGA, Burbano GER, et al. Guidance for clinical neurophysiology examination throughout the COVID-19 pandemic. *Latin American chapter of the IFCN task force - COVID-19. Clin Neurophysiol* 2020;131:1589–98.
- [36] Assenza G, Lanzone J, Ricci L, Boscarino M, Tombini M, Galimberti CA, et al. Electroencephalography at the time of Covid-19 pandemic in Italy. *Neurol Sci* 2020;41:1999–2004.
- [37] Shafer PO, Buelow JM, Noe K, Shinnar R, Dewar S, Levisohn PM, et al. A consensus-based approach to patient safety in epilepsy monitoring units: recommendations for preferred practices. *Epilepsy Behav* 2012;25:449–56.
- [38] Kirby J, Leach VM, Brockington A, Patsalos P, Reuber M, Leach JP. Drug withdrawal in the epilepsy monitoring unit - the patsalos table. *Seizure* 2020;75:75–81.
- [39] Duy PQ, Krauss GL, Crone NE, Ma M, Johnson EL. Antiepileptic drug withdrawal and seizure severity in the epilepsy monitoring unit. *Epilepsy Behav* 2020;109:107128.
- [40] Andersen NB, Alving J, Beniczky S. Effect of medication withdrawal on the interictal epileptiform EEG discharges in presurgical evaluation. *Seizure* 2010;19:137–9.
- [41] van Griethuysen R, Hofstra WA, van der Salm SMA, Bourez-Swart MD, de Weerd AW. Safety and efficiency of medication withdrawal at home prior to long-term EEG video-monitoring. *Seizure* 2018;56:9–13.