



OPEN

COVID-19 patients age, comorbidity profiles and clinical presentation related to the SARS-CoV-2 UK-variant spread in the Southeast of France

Johan Courjon^{1,2,7}, Julie Contenti^{2,3,7}, Elisa Demonchy¹, Jacques Levrant³, Pascal Barbry⁴, Géraldine Rios⁴, Jean Dellamonica⁵, David Chirio¹, Caroline Bonnefoy⁶, Valérie Giordanengo^{2,6} & Michel Carles^{1,2}

The variant 20I/501Y.V1, associated to a higher risk of transmissibility, emerged in Nice city (Southeast of France, French Riviera) during January 2021. The pandemic has resumed late December 2020 in this area. A high incidence rate together with a fast turn-over of the main circulating variants, provided us the opportunity to analyze modifications in clinical profile and outcome traits. We performed an observational study in the University hospital of Nice from December 2020 to February 2021. We analyzed data of sequencing of SARS-CoV-2 from the sewage collector and PCR screening from all positive samples at the hospital. Then, we described the characteristics of all COVID-19 patients admitted in the emergency department (ED) ($n = 1247$) and those hospitalized in the infectious diseases ward or ICU ($n = 232$). The UK-variant was absent in this area in December, then increasingly spread in January representing 59% of the PCR screening performed mid-February. The rate of patients over 65 years admitted to the ED decreased from 63 to 50% ($p = 0.001$). The mean age of hospitalized patients in the infectious diseases ward decreased from 70.7 to 59.2 ($p < 0.001$) while the proportion of patients without comorbidity increased from 16 to 42% ($p = 0.007$). Spread of the UK-variant in the Southeast of France affects younger and healthier patients.

Starting in September 2020, the new SARS-CoV-2 variants called VOC-202012/1 (lineage B.1.1.7, 20I/501Y.V1 or GR/501Y.V1) have rapidly spread in the UK, associated to a higher risk of transmissibility¹. A matched cohort study including 109,812 patients in the UK showed an increase in deaths from 2.5 to 4.1 per 1000 cases detected associated to the 20I/501Y.V1 variant².

The spread of this variant (20I/501Y.V1 i.e. “UK-variant”) in continental Europe was identified late December 2020, as reported by the European Center for Disease Prevention and Control (ECDC) with the first reports in Netherland, Belgium, Denmark³. It was reported in France late December 2020^{4,5}.

After a second outbreak in November (with an incidence up to 501/100,000 inhabitants), the pandemic declined in France in December 2020. On December 10th, the administrative area around Nice, French Riviera, in the Southeast of France, which totalizes more than 1 million inhabitants, exhibited a stable incidence of new positive cases at 169/100,000, i.e., a slightly higher value relative to the whole French territory. Contrary to the rest of France, the pandemic has resumed in this area since late December, reaching an incidence of 583/100,000 on February 13th⁵.

¹Infectious Diseases Department, Université Côte d’Azur, CHU de Nice, Hôpital Archet 1 Infectiologie 151 route de St Antoine de Ginestière, 06200 Nice, France. ²Université Côte d’Azur, Inserm, U1065, C3M, Nice, France. ³Emergency Department, Université Côte d’Azur, CHU Nice, Nice, France. ⁴Institut de Pharmacologie Moléculaire et Cellulaire, UMR7275 CNRS/UNS, Valbonne, France. ⁵Medical Intensive Care Unit Department, Université Côte d’Azur, CHU Nice, Nice, France. ⁶Virology Department, Université Côte d’Azur, CHU Nice, Nice, France. ⁷These authors contributed equally: Johan Courjon and Julie Contenti. ✉email: courjon.j@chu-nice.fr

	December n = 211	January n = 457	February n = 579	p
Age years—mean (SD)	68.0 (17)	67.3 (17.7)	64.4 (18.3)***	0.006
Patients over 65 years—n (%)	133 (63)	265 (58)	290 (50)***	0.001
Sex ratio (male/female)	1.34	1.15	1.14	ns
Time 1st symptoms-ED—days (SD)	6.4 (4.3)	7.1 (4.9)	7.5 (4.4)***	< 0.001
Clinical signs				
Respiratory rate/min.—mean (SD)	22.0 (7.1)	23.8 (9.3)	24.4 (8.4)***	0.001
Max oxygen flow L/min—mean (SD)	2.7 (3.6)	3.2 (5.9)	3.9 (6.9)	ns
Max temperature °C – mean (SD)	37.3 (0.9)	37.3 (0.9)	37.4 (1.2)	ns
Min SpO ₂ %—mean (SD)	91.9 (6.1)	91.9 (7.6)	91.8 (7.2)	ns
NEWS-2 score—mean (SD)	5.1 (3.6)	5.1 (3.6)	5.3 (3.5)	ns

Table 1. Patients and clinical characteristics of Covid-19 patients admitted in the emergency department from December 1st to February 28th. Post hoc analysis (Fischer exact-test or Mann–Whitney U-test, if required): * $p < 0.05$ versus December ** $p < 0.05$ versus January.

At the same time, the UK-variant, emerged in January in our area. The specific epidemiologic trends of COVID-19 epidemic in our area, i.e., a high incidence rate together with a fast turn-over of the main circulating variants, provided us the opportunity to analyze the UK-variant-related clinical profile and outcome traits.

Results

Timeline of UK-variant spreading. The survey in sewage of the city of Nice showed that the UK-variant represented 2.6%, 8.3% and 79.1% of all identified SARS-CoV2 strains in December 2020, January 2021, and February 2021 respectively.

Consistent with these data, the random sequencing of positive PCR recorded from December 18th to 26th at Nice University hospital showed no identification of the UK-variant. This analysis was coordinated by the French National Center for Coronavirus (Institut des Agents Infectieux, CNR, HCL-Lyon) and was performed on 25% all the 73 positive patient's samples isolated during this period.

Finally, a systematic screening PCR to identified latent variants was scheduled starting late January, on governmental recommendation. At this time, all positive PCR done at the Nice Hospital were screened. The rate of UK-variant during Aft1-F was 20% of all positive PCR, then 59% during Aft2-F.

Altogether, these data suggested that the UK-variant was absent in our area in December 2020, then increasingly spread in January 2021.

Cohort profile of Covid-19 patients admitted in ED, overtime. From December 1st to February 28th, 1247 patients were admitted for a suspected or diagnosed SARS-CoV-2 infection (Elderly Care Facilities people not included), aged 66.1 ± 17.9 [17–102] years, 54.0% male gender. Six patients (0.5%) died in the ED, while $n = 731$ patients (58.6%) were hospitalized in a medical ward and $n = 109$ (8.7%) in ICU; the remaining, $n = 401$ (32.1%) were sent back home (ambulatory follow-up). Patients and clinical characteristics are reported (Table 1).

Trends in patient's age (overall) and hospital location after ED (following the initial medical assessment) over these 3-month period are reported (Fig. 1).

Until February 22nd, we identified 29 hospitalized patients bearing the UK-variant. After pairing cases ($n = 29$) versus controls ($n = 58$) on age (61.0 ± 10.7 vs 61.6 ± 11.9 years) and gender (51.7% male in each group), we compared time 1st symptoms-ED admission and the ED NEWS-2 score (cases vs controls) respectively: 7.3 ± 3.5 vs 6.8 ± 3.9 , $p = 0.424$ and 6.2 ± 2.4 vs 6.4 ± 3.0 , $p = 0.642$. Patients admitted in the ED required immediate ICU management in respectively 10.3% (3/29) and 12.0% (7/58), $p = 0.810$.

Hospitalized patients in the infectious diseases and ICU departments: a three-periods assessment comparison. The three a posteriori defined groups, i.e., Bef-F, Aft1-F and Aft2-F respectively, included 51, 72 and 54 patients. Comparison of main data between groups are reported (Table 2).

At the time of analysis, some data were not analyzed because of missing points due to shortness of follow-up with patients still hospitalized (length of stay, mortality).

In patients under 65 years old hospitalized in ID department ($n = 76$), the rate of patients without any comorbidity rose from 21% (Bef-F) to 50% (Aft2-F), $p = 0.029$.

Discussion

The occurrence of UK-variant at the end of 2020 is of major concern, because of the contagiousness issue^{1,4} and therefore the risk of an increased number of patients requiring an ICU bed. Beyond the good organization of the flow of an increased number of patients, the question arises as to whether this lineage is also associated with a more severe clinical presentation, which could involve younger patients. Our results show that patients admitted in January and February 2021 in ED for a COVID-19 and therefore hospitalized for a COVID-19-related

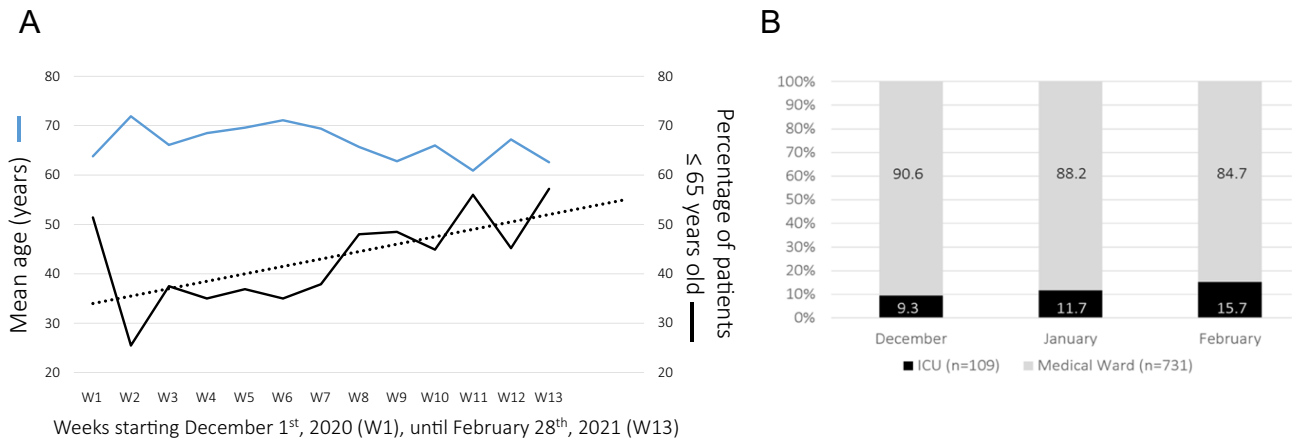


Figure 1. Age change and hospital admission after ED, over a 3 months-period. **(A)** Mean age (blue line) and percentage of patients under 65 years old (black line, F-test 7.24, $p=0.021$ —dotted line, R-value = 0.6301) over weeks from December 1st, 2020, $n=1247$. **(B)** ICU versus medical ward admissions (100% normalized) for after ED hospitalization ($n=840$) over the three months period, February versus December, $p=0.056$.

Infectious diseases patients	Bef-F n=51	Aft1-F n=72	Aft2-F n=54	p
1st symptoms—admission—days (SD)	7.5 (4.5)	6.9 (3.3)	9.4 (5.6)**	0.01
Age—mean (SD)	70.7 (13.6)	66.9 (15.8)	59.2 (14.0)***	<0.001
Sex ratio (male/female)	1.83	1.57	1.35	0.745
Diabetes—n (%)	17 (33%)	16 (22%)	12 (22%)	0.306
Hypertension—n (%)	20 (39%)	30 (42%)	15 (28%)	0.252
Obesity—n (%)	10 (20%)	18 (25%)	9 (17%)	0.503
Immunosuppression—n (%)	4 (8%)	5 (7%)	1 (2%)	0.341
No comorbidity—n (%)	8 (16%)	18 (25%)	23 (42%)***	0.007
Charlson Index (CCI)—mean (SD)	1.3 (1.6)	0.9 (1.0)	0.6 (0.8)***	0.04
Clinical and radiological data				
Respiratory rate/min—mean (SD)	25.0 (6.1)	26.9 (5.8)	24.9 ± (5.9)	0.051
Room air SpO ₂ %—mean (SD)	90.5 (7.2)	91.2 (5.6)	92.1 (4.6)	0.335
CRP mg/L—mean (SD)	94.3 (85.9)	108.8 (77.7)	94.4 (68.2)	0.316
CT-scan opacities ^a over 50% (n, %)	8 (16%)	10 (14%)	9 (17%)	0.951
ICU admission	12 (23%)	19 (26%)	19 (35%)	0.374
ICU patients	Bef-F n=13	Aft1-F n=20	Aft2-F n=22	p
Age (years)—mean (SD)	68.4 (10.8)	64.5 (10.7)	60.6 (12.5)	0.154
Male—n (%)	9 (69%)	13 (65%)	16 (72%)	0.863
Mechanical ventilation—n (%)	7 (54%)	5 (25%)	10 (45%)	0.203
HFNC—n (%)	5 (38%)	14 (70%)	9 (45%)	0.140
SAPSII—mean (SD)	40.6 (18.1)	35.5 (15.3)	40.0 (19.9)	0.566
Worst P/F—mean (SD)	92 (33)	112 (62)	87 (24)	0.244

Table 2. Hospitalized patients in the infectious diseases and ICU departments: a three-periods assessment comparison. Bef-F: December 7th to 21st 2020, Aft1-F: January 24th to February 7th, Aft2-F: February 8th to 22nd. Comparison between groups by a non-parametric one-way ANOVA on ranks (Kruskal–Wallis test). Post hoc analysis (Fischer exact-test or Mann–Whitney U-test, if required): * $p < 0.05$ versus December ** $p < 0.05$ versus January. ^aTypical Covid-19 related imaging such as subpleural ground-glass opacities and subsequent consolidations, small vessel or intralobular septum thickening (33,631,941).

pneumonia are significantly younger with around 50% of them aged less than 65 years old. Our data strongly support the increased risk of SARS-CoV-2-related severe pneumonia in younger patients contemporaneously to the spread of the UK-variant in our area.

The severity issue is less conclusive. The rate of ED patients admitted in ICU increases, but an increased clinical severity is not obvious, as neither the NEWS-2 score nor the main signs of clinical severity (oxygen requirement, respiratory rate) have changed over time. Even when UK-variant patients were paired on age and gender, no difference in term of early-stage severity was evidenced. In the same way, patients hospitalized in the ID department did not show a more severe inflammatory response or extended CT scan lung injuries at later times, i.e., after the spread of the UK-variant. Finally, for ICU patients, neither the severity score at admission (SAPSII)

nor the depth of the respiratory distress seemed to increase by the variant. Altogether, there is no evidence to support a different and/or more severe clinical picture of the SARS-CoV-2-related pneumonia with the UK-variant.

The occurrence and severity of COVID-19 has been related to comorbidities like diabetes, hypertension or obesity^{6,7}. Importantly, we provide herein data in favor of an increased ratio of healthy patients (i.e., without comorbidities) hospitalized for a SARS-CoV-2 related pneumonia associated to the spread of the UK-variant in the fifth-largest city of France. Combined to the patient's younger age, this brings several concerns. The most immediate is about the risk of having a pandemic evolving toward young and healthy populations, with even greater social consequences. Another consequence, supported by our data is the increase of patients with younger age/comorbidity free-related ICU requirement. So far, older patients with comorbidities have a greater risk of ICU admission^{8,9}. The increase of younger people admitted in ED for a COVID-19, in our cohort, is associated with a trend of increased ICU ratio requirement afterward. The same trend was noticed in the ID department. As the severity is not obviously increased, a likely explanation is that physicians, after months of fighting against the pandemic with critical patients mainly over 65 years old, have been surprised to receive younger patients with severe pneumonia, leading possibly to a higher ICU demand. As the pandemic rises concerns about ICU being overwhelmed, such change in patient's profile brings new insights in the debate about ICU triage^{10,11}. Furthermore, according to the country of interest, the vaccination strategy may have to be reconsidered in order to include a younger part of the population at risk of severe or critical COVID-19. Finally, the effect of the UK-variant on SARS-Cov-2-related mortality cannot be appropriately assessed here because, giving a mortality rate under 0.5%, the required sample size needs to be thousands of patients². The number of patients managed in our hospital and the duration of follow-up available do not allowed us to consider the final outcome for comparison between study periods.

Until today, reports of a relationship between SARS-CoV-2 genetic specificities among variants and clinical presentation are scarce. One variant with a deletion ($\Delta 382$) in the open reading frame 8 have been associated to milder infections in Singapore¹² and may have play a role in the very low case fatality rate in this country¹³. Spike mutation D614G that probably occurs in China before its diffusion in Europe is associated with a decreased age of COVID-19 patients possibly due to an increased viral load in younger patients¹⁴. The N501Y mutation is associated with adaptation to rodent, for instance mice¹⁵ and may increase SARS-CoV-2 Spike protein binding to ACE2 because of conformational changes, thus increasing its transmissibility¹. The role of $\Delta 69/\Delta 70$ on the spike protein is also potentially involved in the increased transmissibility¹⁶.

The spread of the UK-variant was found associated with a higher transmissibility as reported by others⁴. Since our data are mainly on hospitalized patients, the carriage of the UK-variant in a younger population bears further studies about the clinical fraction associated to the variant in the population¹⁷ outside the hospital. A puzzling question is why younger patients need now to be hospitalized, which was not the case before? The higher transmissibility of UK-variant is supposed to be similar among all age groups¹⁸. As of 26th of February, 60,000 inhabitants of Alpes Maritimes had received two doses of vaccine. Increased herd immunity after vaccination of the old community and mortality during the two previous epidemic peaks in France that has affected the most fragile elderly may have independently contributed to the observation of fewer patients over 75-year-old requiring hospitalization.

Our study has some limitations. First, data are retrospective. Then, data on the UK-variant spread results from analysis of sewage or selected hospital samples and not from a systematic survey. Data on hospitalized patients (variant versus "common" strain) are incomplete. Finally, patient's data were extracted from ED, ID, and a medical ICU of the University hospital of Nice, but patients hospitalized in other hospitals from the ED were not included in the study, leading to incomplete analysis of involved patients. Our study does not allow to distinguish an effect of the UK-variant at the individual level, that is a higher probability to develop pneumonia after a contact with the virus due to the Spike protein RBD mutations, from a modification of virus diffusion in the Southeast of France population leading to a higher exposure of younger inhabitants which could be related to the virus itself or to a modification in non-pharmaceutical interventions adherence. Finally, the effect of the UK-variant on SARS-Cov-2-related mortality cannot be assessed here because, giving a mortality rate under 0.5%, the required sample size needs to be thousands of patients² and our study wasn't designed on purpose.

In summary, our data alerts on the consequences of the UK-variant spreading with younger and healthier patients requiring hospitalization for a SARS-CoV-2 pneumonia. Health system impact (with the risk of overwhelming ICU and medical units) as well as social consequences should be assessed in larger prospective studies. The spread of SARS-CoV-2 variants displaying a higher transmissibility may be associated with an increased diffusion across younger ages groups. Therefore, vaccination strategies and preventive nonpharmaceutical interventions need to integrate people less than 65 years-old even those without any medical history.

Methods

We designed an observational study to assess the clinical profile and outcome of patients infected with the SARS-CoV-2, before and during the spread of the UK-variant. Patients admitted in the Emergency department (ED), in the Infectious Diseases department (IDD) and the ICU at Nice University Hospital (Cote d'Azur University UCA), France, were part of this study. Data were extracted from the hospital electronic database (n°410) of patient's record, registered on clinicaltrials.gov NCT04779021, also from the hospital Virology Lab and the Institut de Pharmacologie Moléculaire et Cellulaire, UMR7275 CNRS/UNS (for sewage samples analysis).

In the way to quickly characterize the clinical consequences of the spread of these new variants, we designed a three-step approach.

First step: Spread of the UK-variant in our area and among hospitalized patients. Data of the sequencing of SARS-CoV-2 identified from the sewage collector of the city of Nice (overall gathering) in December and January,

and PCR screening from all positive samples analyzed at the hospital Virology Lab from newly admitted and diagnosed patients (starting late January 2021).

Second step: Concomitant epidemiology and clinical characteristics at hospital admission of COVID-19 overtime, by an evaluation over a three-month period, from December 1st, 2020, to February 22nd, 2021, of all patients admitted in the ED for COVID-19. Demographic data, clinical severity as recorded by the NEWS-2 scoring system and the follow-up (ward admission versus ambulatory follow-up). Patients coming from Elderly Care facilities clusters or transferred from another hospital with a SARS-CoV-2 positive PCR were not included in the study.

Third step: Clinical severity and follow-up of hospitalized patients for a SARS-CoV-2 pneumonia, in the IDD or ICU over three fortnights:

- before the spread of the UK-variant in our area, i.e., from December 7th to 21st 2020 (**Bef-F**),
- the two fortnights after starting a PCR screening from all positive samples analyzed at the hospital Virology Lab from newly admitted and diagnosed patients (late January 2021), i.e., from January 24th to February 7th and from February 8th to 22nd, 2021 respectively **Aft1-F** and **Aft2-F**).

Demographic data, clinical signs and severity were recorded by the NEWS-2 (ED), SAPS-2 and SOFA scores (ICU), CT-Scan findings and the follow-up were recorded and analyzed.

We assessed the UK-variant spread in sewage through the Nice wastewater plant, which treats the sewage for a population of 390,000 inhabitants. The daily incoming volume varied from 97,000 m³ (on December 15th, 2020) to 128,000 (January 21st, 2021), due to rain at the end of January. Sequencing followed the protocol of the Artic consortium (<https://www.protocols.io/view/ncov-2019-sequencing-protocol-v3-locost-bh42j8ye>), data being analyzed with their pipeline (<https://artic.network/ncov-2019/ncov2019-bioinformatics-sop.html>). For each position associated with 20I/501Y.V1 lineage (https://cov-lineages.org/pangolin_tutorial.html) the fraction of 20I/501Y.V1 lineage reads relative to the total number of reads is assessed.

The virological assessment of positive PCR for SARS-CoV-2 variants at the Virology Lab was done as follow: SARS-CoV-2 positive samples were screened for the presence of the 20I/501Y.V1 lineage using either TaqPath COVID-19 RT-PCR (ThermoFisher, Illkirch-Graffenstaden, France) or ViroBOAR Spike 1.0 RT-PCR (Eurofins Biomnis, Lyon, France) kits, following manufacturer's instructions. Identification of the 20I/501Y.V1 variant was further verified by sequencing by sequencing a random set of samples in which the reliability of the RT-PCR screening tests was checked. Briefly, Spike protein regions covering $\Delta 69/70$ and $\Delta 144$ deletions, as well as the N501Y substitution, were amplified through RT-PCR, and amplicons were sequenced by the Sanger method.

Patients who were hospitalized with an identification of the UK-variant at the Virology Lab (see upper) were paired (1:2) with patients hospitalized during the three first weeks of December (variant-free period), on age and gender. News-2 score, time 1st symptoms-ED admission and further hospital orientation (ICU versus medical ward) were the main evaluated criteria.

Data were expressed as mean \pm standard deviation SD. Comparisons are done using Chi-2, Fisher exact-test for categorical variables and Student-t test, Kruskal–Wallis test and Mann–Whitney U-test for continuous variables comparisons, if required. All data were analyzed using SPSS software*.

Data availability

Data are available upon reasonable request.

Received: 18 March 2021; Accepted: 20 July 2021

Published online: 16 September 2021

References

1. Leung, K., Shum, M. H., Leung, G. M., Lam, T. T. & Wu, J. T. Early transmissibility assessment of the N501Y mutant strains of SARS-CoV-2 in the United Kingdom, October to November 2020. *Eurosurveillance* **26**, 2002106 (2021).
2. Challen, R. *et al.* Risk of mortality in patients infected with SARS-CoV-2 variant of concern 202012/1: Matched cohort study. *BMJ* **372**, n579 (2021).
3. Threat Assessment Brief: Rapid increase of a SARS-CoV-2 variant with multiple spike protein mutations observed in the United Kingdom. *European Centre for Disease Prevention and Control*. <https://www.ecdc.europa.eu/en/publications-data/threat-assessment-brief-rapid-increase-sars-cov-2-variant-united-kingdom> (2020). Accessed 24 Feb 2021
4. Gaynard, A. *et al.* Early assessment of diffusion and possible expansion of SARS-CoV-2 Lineage 20I/501Y.V1 (B.1.1.7, variant of concern 202012/01) in France, January to March 2021. *Euro Surveill. Bull. Eur. Sur Mal. Transm. Eur. Commun. Dis. Bull.* **26**, 2100133 (2021).
5. COVID 19 point épidémiologique. <https://www.santepubliquefrance.fr/dossiers/coronavirus-covid-19> (2021). Accessed 22 Feb 2021
6. Zhou, F. *et al.* Clinical course and risk factors for mortality of adult inpatients with COVID-19 in Wuhan, China: A retrospective cohort study. *Lancet Lond. Engl.* **395**, 1054–1062 (2020).
7. Yin, T., Li, Y., Ying, Y. & Luo, Z. Prevalence of comorbidity in Chinese patients with COVID-19: Systematic review and meta-analysis of risk factors. *BMC Infect. Dis.* **21**, 200 (2021).
8. Tan, E., Song, J., Deane, A. M. & Plummer, M. P. Global impact of Coronavirus Disease 2019 infection requiring admission to the ICU: A systematic review and meta-analysis. *Chest* **159**, 524–536 (2021).
9. Pijls, B. G. *et al.* Demographic risk factors for COVID-19 infection, severity, ICU admission and death: A meta-analysis of 59 studies. *BMJ Open* **11**, e044640 (2021).
10. Wilkinson, D., Zohny, H., Kappes, A., Sinnott-Armstrong, W. & Savulescu, J. Which factors should be included in triage? An online survey of the attitudes of the UK general public to pandemic triage dilemmas. *BMJ Open* **10**, e045593 (2020).
11. Sprung, C. L. *et al.* Adult ICU triage during the Coronavirus Disease 2019 Pandemic: Who will live and who will die? Recommendations to improve survival. *Crit. Care Med.* **48**, 1196–1202 (2020).
12. Young, B. E. *et al.* Effects of a major deletion in the SARS-CoV-2 genome on the severity of infection and the inflammatory response: An observational cohort study. *Lancet Lond. Engl.* **396**, 603–611 (2020).

13. Kayano, T. & Nishiura, H. A comparison of case fatality risk of COVID-19 between Singapore and Japan. *J. Clin. Med.* **9**, 3326 (2020).
14. Volz, E. *et al.* Evaluating the effects of SARS-CoV-2 spike mutation D614G on transmissibility and pathogenicity. *Cell* **184**, 64–75. e11 (2021).
15. Gu, H. *et al.* Adaptation of SARS-CoV-2 in BALB/c mice for testing vaccine efficacy. *Science* **369**, 1603–1607 (2020).
16. Neutralising antibodies in Spike mediated SARS-CoV-2 adaptation. medRxiv. <https://doi.org/10.1101/2020.12.05.20241927v3.full#F6>.
17. Davies, N. G. *et al.* Age-dependent effects in the transmission and control of COVID-19 epidemics. *Nat. Med.* **26**, 1205–1211 (2020).
18. Investigation of novel SARS-CoV-2 variant: Variant of Concern 202012/01. GOV.UK. <https://www.gov.uk/government/publications/investigation-of-novel-sars-cov-2-variant-variant-of-concern-20201201>. Accessed 10 Mar 2021

Acknowledgements

We thank Rainer Waldmann for fruitful discussions.

Author contributions

J.Cou., M.C. initiated the study. J.Cou., J.Con., P.B., V.G., M.C. contributed to the study design. E.D., J.L., G.R., J.D., D.C. contributed to the implementation and supervision of the study. J.Cou., J.Con., M.C. analysed the data and takes responsibility for the accuracy of the data analysis. J.Cou., J.Con., P.B., V.G., M.C. drafted the manuscript. All authors read and approved the final manuscript.

Funding

The study was carried out as part of our routine work.

Competing interests

The authors declare no competing interests.

Additional information

Correspondence and requests for materials should be addressed to J.C.

Reprints and permissions information is available at www.nature.com/reprints.

Publisher's note Springer Nature remains neutral with regard to jurisdictional claims in published maps and institutional affiliations.



Open Access This article is licensed under a Creative Commons Attribution 4.0 International License, which permits use, sharing, adaptation, distribution and reproduction in any medium or format, as long as you give appropriate credit to the original author(s) and the source, provide a link to the Creative Commons licence, and indicate if changes were made. The images or other third party material in this article are included in the article's Creative Commons licence, unless indicated otherwise in a credit line to the material. If material is not included in the article's Creative Commons licence and your intended use is not permitted by statutory regulation or exceeds the permitted use, you will need to obtain permission directly from the copyright holder. To view a copy of this licence, visit <http://creativecommons.org/licenses/by/4.0/>.

© The Author(s) 2021