


## GASTROENTEROLOGY

**Effect of a concomitant elemental diet with maintenance anti-tumor necrosis factor- $\alpha$  antibody therapy in patients with Crohn's disease: A multicenter, prospective cohort study**

Fumihito Hirai,<sup>\*</sup> <sup>1</sup> Tetsuya Ishida,<sup>†,1</sup> Fuminao Takeshima,<sup>‡</sup> Shojiro Yamamoto,<sup>§</sup> Ichiro Yoshikawa,<sup>¶</sup> Shinya Ashizuka,<sup>\*\*</sup> Haruhiko Inatsu,<sup>\*\*</sup> Keiichi Mitsuyama,<sup>††</sup> Suketo Sou,<sup>††</sup> Ryuichi Iwakiri,<sup>§§</sup> Ryoichi Nozaki,<sup>¶¶</sup> Hidehisa Ohi,<sup>\*\*\*</sup> Motohiro Esaki,<sup>†††</sup> Mitsuo Iida,<sup>†††</sup> Toshiyuki Matsui<sup>\*</sup> and The Additional Power of Elemental Diet on Maintenance Biologics Therapy in Crohn's Disease (ADORE) Study Group

<sup>\*</sup>Department of Gastroenterology, Fukuoka University Chikushi Hospital, <sup>†</sup>The Third Department of Internal Medicine, School of Medicine, University of Occupational and Environmental Health, <sup>††</sup>Division of Gastroenterology, Department of Medicine, Kurume University School of Medicine, <sup>†††</sup>Department of Endoscopy, Tobata Kyoritsu Hospital, <sup>††††</sup>Department of Medicine and Clinical Science, Graduate School of Medical Sciences, Kyushu University, and <sup>†††††</sup>Kyushu Central Hospital of the Mutual Aid Association of Public School Teachers, Fukuoka, <sup>‡</sup>Department of Gastroenterology, Oita Red Cross Hospital, Oita, <sup>§</sup>Department of Gastroenterology and Hepatology, Nagasaki University Graduate School of Biomedical Sciences, Nagasaki, Departments of <sup>§§</sup>Gastroenterology and Hematology, Faculty of Medicine, <sup>\*\*</sup>Internal Medicine, Circulatory and Body Fluid Regulation, Faculty of Medicine, University of Miyazaki, Miyazaki, <sup>§§§</sup>Department of Internal Medicine and Gastrointestinal Endoscopy, Saga University School of Medicine, Saga, <sup>¶¶¶</sup>Coloproctology Center Takano Hospital, Kumamoto, and <sup>\*\*\*</sup>Department of Gastroenterology, Izuro Imamura hospital, Kagoshima, Japan

**Key words**

adherence, Crohn's disease, elemental diet, TNF- $\alpha$  inhibitor.

Accepted for publication 14 June 2018.

**Correspondence**

Fumihito Hirai, Department of Gastroenterology, Fukuoka University Chikushi Hospital, 1-1-1 Zokumyoin, Chikusino, Fukuoka, Japan.  
Email: fuhirai@cis.fukuoka-u.ac.jp

**Declaration of conflict of interest:** Fumihito Hirai has received lecture fees from EA Pharma Co., Ltd., Eisai Co., Ltd., AbbVie GK, and Mitsubishi Tanabe Pharma Co., Ltd. Motohiro Esaki has received lecture fees and research funding from AbbVie GK and Mitsubishi Tanabe Pharma Co., Ltd. and research grant from EA Pharma Co., Ltd. Toshiyuki Matsui has received lecture fees from Eisai Co., Ltd. and AbbVie GK and research grant from Astellas Pharma Inc., Janssen Pharmaceutical K.K., and Mitsubishi Tanabe Pharma Co., Ltd.

**Author contribution:** F. H., M. E., T. M., and M. I. contributed in the study concept and design; F. H., T. I., F. T., S. Y., I. Y., S. A., H. I., K. M., S. S., R. I., R. N., and H. O. in the acquisition of patient data; F. H. in the statistical

**Abstract**

**Background and Aim:** The aim of this study was to clarify the additional effect of a concomitant elemental diet (ED) for patients with Crohn's disease on maintenance anti-tumor necrosis factor- $\alpha$  antibody (anti-TNF).

**Methods:** Crohn's disease patients who received anti-TNF induction therapy were enrolled. Patients who achieved clinical response (defined as delta Crohn's disease activity index [CDAI] > 70 and CDAI < 200) at 10–14 weeks after the start of infliximab or adalimumab were included. Eligible patients took a tolerability test of ED (900 kcal/day) for 3 days. Then, patients who preferred concomitant ED and whose ED tolerance was confirmed were allocated to the ED group and given Elemental 900 kcal/day or more. Other patients were allocated to the non-ED group. The primary endpoint was the cumulative remission rate at 2 years after baseline. Clinical relapse was defined as CDAI > 200 and/or need for additional treatment. Adherence to the ED was confirmed at each visit.

**Results:** Seventy-two patients were included. Thirty-seven were allocated to the ED group, and 35 were allocated to the non-ED group. The cumulative remission rate at 2 years was not significantly different between the two groups (60.9% vs 56.7%,  $P = 0.98$ ). Adherence to the ED in the ED group was relatively low, and only 11 patients were maintained on an ED of 900 kcal/day.

**Conclusions:** The addition of ED for Crohn's disease patients who responded to initial anti-TNF induction therapy was not found to improve outcomes. The efficacy of concomitant ED in other clinical settings, such as loss of response, needs to be clarified in the future (UMIN000009789).

analysis; F. H. and T. I. in the drafting of the manuscript and in the data interpretation and critical revision of the manuscript for important intellectual content; and M. E., T. M., and M. I. in the study supervision.

**Financial support:** This study was partially funded by EA Pharma Co., Ltd.

<sup>1</sup>These authors contribute equally to this work.

## Introduction

Crohn's disease (CD) is known to be a chronic inflammatory disease showing relapsing and disabling course due to the lack of curative therapy. However, the elucidation of its disease mechanisms has led to the discovery of effective therapeutics, such as anti-tumor necrosis factor- $\alpha$  antibody (anti-TNF) and anti-interleukin-12 and anti-interleukin-23 antibodies, which have become widely used.<sup>1–5</sup> Anti-TNF, currently the primary approach for treating CD, is extremely effective in inducing and maintaining remission.<sup>1–4</sup> However, it also has several problems, such as primary nonresponse, intolerance, and loss of response (LOR).<sup>6,7</sup> LOR has been reported to affect 25–61% of patients on anti-TNF maintenance therapy,<sup>6–9</sup> and the main reason for this has been attributed to the decrease in its circulating concentration or the appearance of antidrug antibodies, and such cases are typically treated by dose escalation, such as doubled dosage, or shortened duration.<sup>10,11</sup> Risk factors for LOR include male sex, being a smoker, long-term illness, family history of inflammatory bowel disease, and previous use of anti-TNF.<sup>7</sup> In addition, it has been demonstrated that the concomitant use of an immunomodulator (IMM), especially infliximab (IFX), increases the long-term effect,<sup>12</sup> and IMM is added or its dose is increased in patients who develop LOR.<sup>13–15</sup> An elemental diet (ED) is an extremely safe therapeutic approach that is effective for maintaining remission and preventing postoperative recurrence even when used alone.<sup>16,17</sup> Recently, the concomitant use of anti-TNF and an ED has been gaining attention as a therapeutic approach for CD, and many reports have demonstrated its efficacy for maintaining remission and continuing anti-TNF treatment.<sup>18–21</sup> A meta-analysis that assessed four studies regarding concomitant use of anti-TNF and an ED concluded that there was a threefold effect in attaining clinical remission with concomitant IFX and ED compared with IFX without ED.<sup>22</sup> However, only one study has prospectively analyzed the effects of concomitant ED.<sup>18</sup> Therefore, there is not enough evidence to determine whether the concomitant use of anti-TNF and an ED is useful for maintaining remission in CD. The present prospective, multicenter, cohort study was designed to elucidate whether this combination brings additional long-term effects in patients who have achieved remission with anti-TNF.

## Methods

**Study subjects.** Among CD patients who were newly receiving anti-TNF therapy, those with Crohn's disease activity index (CDAI) of at least 220 but less than 400 within 16 weeks prior to anti-TNF induction were eligible to enroll in the study. Patients who had previously used anti-TNF and those who had undergone surgery within 6 months prior to anti-TNF induction were excluded. During the 2-week period before anti-TNF induction, patients were given an explanation of the study objectives and the usefulness and side effects of anti-TNF and an ED. Patients were provisionally enrolled after giving written, informed consent. Provisionally enrolled patients underwent a tolerability evaluation by taking an ED of 900 kcal/day for at least 3 days during the 2-week period before anti-TNF induction. The ED was given orally as a general rule, but tube feeding by self-intubation was also allowed in patients who had previously received tube feeding and wished to receive an ED via this route. Subsequently, among

patients with confirmed tolerability, those who wished to receive ED concomitantly during anti-TNF maintenance therapy were assigned to the ED group, and all other patients were assigned to the non-ED group. Anti-TNF treatment consisted of IFX at a dose of 5 mg/kg at 0, 2, and 6 weeks or adalimumab (ADA) with an initial dose of 160 mg, second dose of 80 mg, and a dose of 40 mg every other weeks thereafter. The baseline CDAI was calculated on the day of anti-TNF induction and was verified to be at least 220 but less than 400. At 10–14 weeks after anti-TNF- $\alpha$  induction, response to anti-TNF treatment was determined using the CDAI. A CDAI of < 200 with a decrease of at least 70 ( $\Delta$ CDAI > 70) was defined as a "clinical response," and patients who did not meet this criterion and patients who discontinued anti-TNF therapy were defined as having "no response." Only patients who were determined to have a "clinical response" were officially enrolled in the study.

## Endpoints and assessments

**Study design.** This study was named the Additional Power of Elemental Diet on Maintenance Biologics Therapy in Crohn's Disease (ADORE) Study and was conducted as an investigator-initiated, multicenter, prospective, cohort study in Kyushu area, Japan. A total of 17 institutions that obtained ethics approval for this study participated. Provisional and official enrollment of patients was performed by the clinical study administrative office (Fukuoka University Chikushi Hospital), and the participating institutions communicated with the office via fax regarding enrollment. Responses were verified by the office, and officially enrolled patients were assigned a study enrollment number. Personal information was solely managed by each institution, and electronic data capture (EDC) was completed on a later date in a manner such that individuals could not be identified and was mailed to the office as password-protected electronic media after study completion for each patient. Adverse events were described in the EDC and were also reported as appropriate for each case. We registered this study to the University Hospital Medical Information Network of Japan (register no. UMIN000009789).

**Endpoints.** The primary endpoint of the present study was the rate of maintaining remission at 2 years after anti-TNF induction. Recurrence was defined as CDAI  $\geq$  200 or the need for additional treatment, which included additional medications such as IMM, dose escalation such as a dose increase and a shortened interval of anti-TNF, surgery, addition of the ED in the non-ED group, and hospitalization due to exacerbated CD. Shortened interval of IFX was defined as duration within 6 weeks or less. As for ADA, shortened interval was defined as 40 mg every week. The enrolled patients visited the participating institutions at least every 8 weeks for a checkup to determine CDAI, the C-reactive protein (CRP) level, and the presence/absence of recurrence. The EDC was submitted at the time when patients met the definition of recurrence or after 2 years when the 2-year study period was completed.

Secondary endpoints were analysis of adherence in the ED group, relapse risk factor analysis comparing those with and without a recurrence, and adverse events of anti-TNF and the ED. Adherence was determined through patient interviews conducted by physicians at each institution and through the prescribed

amount of Elental (EA Pharma Co., Ltd., Tokyo, Japan). The amount of ED during the follow-up period was verified for each patient, and the amount that was maintained for at least two-thirds of the follow-up was designated as that patient's ED amount.

### Statistical analysis

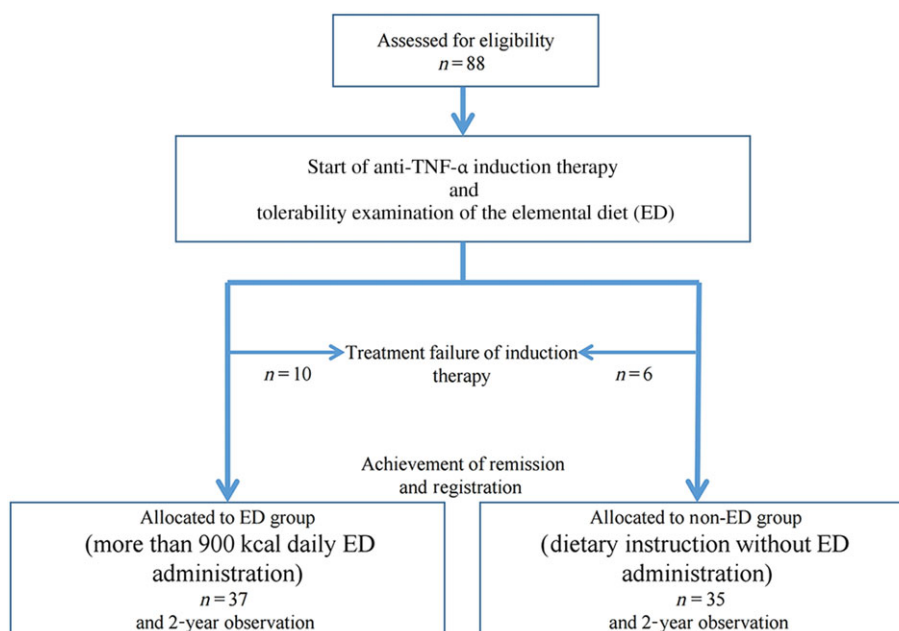
**Sample size.** The 1-year rate of maintaining remission after anti-TNF monotherapy from a retrospective study with an approximately 2-year follow-up period conducted in Kyushu region was approximately 50%,<sup>20</sup> and this was similar to the outcomes from previous studies from Western countries, such as the ACCENT-1 study,<sup>1</sup> CLASSIC II study,<sup>3</sup> and CHARM study.<sup>4</sup> In the earlier study from Kyushu, the hazard ratio of concomitant enteral nutrition therapy to IFX monotherapy for maintaining remission was 0.426. Based on these previous findings, the hazard ratio of the ED group to the non-ED group was set to be 0.426, and the rate of maintaining remission after 1 year was set to be 50% in the non-ED group. With these values, along with a follow-up duration of 2 years, two-tailed significance of 5%, and power of 80%, the necessary number of patients was calculated to be 37 in each group using the SAS 9.1 POWER procedure. Because this was not a randomized, controlled trial, provisional enrollment of 90 patients at participating institutions was planned with consideration for the imbalanced assignment to the ED group and the non-ED group and potential patient dropout at enrollment.

**Statistical methods.** The analysis for this study was conducted by Satt Co., Ltd. (Tokyo, Japan), a company independent

from all participating facilities, the clinical study administrative office, and industry collaborators. With SAS ver. 9.4 software (SAS Institute, Cary, NC), the *t*-test and Wilcoxon rank-sum test were used to perform unpaired comparisons between two groups, and the chi-squared test or Fisher's exact test was used to compare frequencies. The cumulative rate of maintaining remission was analyzed with the Kaplan–Meier method and compared between two groups using the log-rank test. Cox regression analysis was used for multivariate analysis.  $P < 0.05$  was considered significant for all analyses.

## Results

**Demographic and baseline characteristics.** A total of 88 patients were provisionally enrolled in the study between July 2011 and March 2014 to assess patients' desire to receive an ED and their tolerability of the ED. Of these patients, a total of 16 patients with a poor response to anti-TNF (10 patients who wished to receive the ED and had good ED tolerability and six patients who either had poor ED tolerability or did not wish to receive the ED) were not officially enrolled. Ultimately, 72 patients who met the clinical response criteria were officially enrolled, and 37 patients were allocated to the ED group, while the remaining 35 patients were allocated to the non-ED group (Fig. 1). Patient characteristics are shown in Table 1. The number of patients who had received an ED in the past was greater in the ED group than in the non-ED group ( $P = 0.03$ ), but none of the other patient characteristics were significantly different between the two groups. Seven patients (9.9%) in the ED group



**Figure 1** Patient enrollment of this study. A total of 88 eligible subjects who provided informed consent received anti-tumor necrosis factor (TNF)- $\alpha$  (infliximab or adalimumab) induction therapy and took a tolerability test of the ED for 3 days and administration of an ED of 900 kcal/day. A total of 72 subjects, excluding 16 who failed induction therapy, were allocated depending on their ED tolerance. Overall, 37 subjects were allocated to the ED group and given an ED of more than 900 kcal/day every day, and 35 subjects were allocated to the non-ED group who received dietary instruction without ED. [Color figure can be viewed at [wileyonlinelibrary.com](http://wileyonlinelibrary.com)]

**Table 1** Patient's demographic characteristics at the time of achieving remission after the start of anti-TNF- $\alpha$  induction therapy

Demographic characteristics		ED group ( <i>n</i> = 37)	Non-ED group ( <i>n</i> = 35)	<i>P</i> value
Age	Mean ( $\pm$ SD)	31.6 (12.5)	31.9 (12.4)	0.86 (W)
	Median (range)	27.0 (18–59)	28.0 (18–70)	
Gender	Male	28 (75.7%)	24 (68.6%)	0.60 (F)
	Female	9 (24.3%)	11 (31.4%)	
Induction therapy	Infliximab	26 (70.3%)	19 (54.3%)	0.22 (F)
	Adalimumab	11 (29.7%)	16 (45.7%)	
Disease location	Ileum	5 (13.5%)	4 (11.4%)	0.69 (F)
	Ileum and colon	25 (67.6%)	21 (60.0%)	
	Colon	7 (18.9%)	10 (28.6%)	
Disease periods (year)	Mean ( $\pm$ SD)	6.5 (10.1)	6.9 (8.0)	0.40 (W)
CDAI	Mean ( $\pm$ SD)	273.3 (50.1)	268.3 (45.9)	0.85 (W)
Smoking status	No	32 (86.5%)	24 (68.6%)	0.15 (F)
	Past	2 (5.4%)	2 (5.7%)	
	Yes	3 (8.1%)	9 (25.7%)	
Perianal lesion	No	18 (48.6%)	13 (37.1%)	0.35 (F)
	Yes	19 (51.4%)	22 (62.9%)	
Fistula	No	33 (89.2%)	31 (88.6%)	0.85 (F)
	Internal fistula	0 (0.0%)	1 (2.9%)	
	Enterocutaneous	4 (10.8%)	3 (8.6%)	
Intestinal stricture	No	23 (62.2%)	26 (74.3%)	0.32 (F)
	Yes	14 (37.8%)	9 (25.7%)	
Previous enteral nutrition <sup>†</sup> (year)	0	17 (45.9%)	27 (77.1%)	0.03 (F)
	1–3	8 (21.6%)	3 (8.6%)	
	$\geq$ 4	12 (32.4%)	5 (14.3%)	
Dosage of enteral nutrition <sup>†</sup> (kcal/day)	Mean ( $\pm$ SD)	1037.8 (296.6)	171.1 (101.4)	< 0.001 (W)
	Number of patients	<i>n</i> = 20	<i>n</i> = 8	
Previous operation (times)	0	26 (70.3%)	25 (71.4%)	0.80 (F)
	1–3	11 (29.7%)	9 (25.7%)	
	$\geq$ 4	0 (0.0%)	1 (2.9%)	
Concurrent medications Azathioprine	No	30 (81.1%)	33 (94.3%)	0.15 (F)
	Yes	7 (9.9%)	2 (5.7%)	

<sup>†</sup>ED and/or semi-digestion nutrition agent.

CDAI, Crohn's disease activity index; ED, elemental diet; F, Fisher's exact test; TNF, tumor necrosis factor; W, Wilcoxon rank-sum test.

and two patients (5.7%) in the non-ED group concomitantly used IMMs.

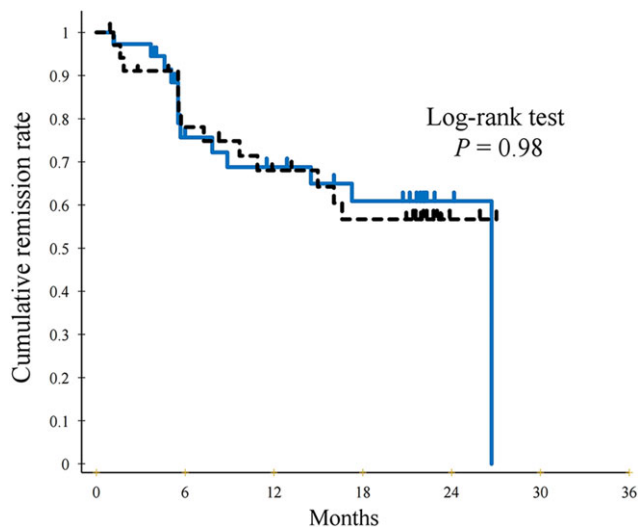
**Cumulative remission rate.** The cumulative remission rate 2 years after starting anti-TNF was not significantly different between the ED group (60.9%) and the non-ED group (56.7%) ( $P = 0.98$ ) (Fig. 2). Clinical relapse occurred in 13 patients in the ED group, as indicated by CDAI > 200 in eight patients or additional treatment in five patients (surgery,  $n = 0$ ; anti-TNF dose escalation,  $n = 2$ ; and other additional treatment,  $n = 3$ ). Similarly, clinical relapse occurred in 13 patients in the non-ED group as indicated by CDAI > 200 in six patients and additional treatment in seven patients (surgery,  $n = 0$ ; anti-TNF dose escalation,  $n = 3$ ; switching anti-TNF from ADA to IFX,  $n = 1$ ; and other additional treatment,  $n = 3$ ).

**Crohn's disease activity index, C-reactive protein, and albumin at the time of study endpoint.** Many factors on clinical efficacy were compared between two groups at the time of study endpoint as the additional investigation. CDAI of ED group was lower than that of non-ED group ( $100.1 \pm 94.0$  vs

$124.1 \pm 94.0$ ); however, there was no significant difference ( $P = 0.21$ ). Likewise, CRP level showed the same tendency ( $0.9 \pm 1.8$  vs  $1.6 \pm 2.7$  mg/dL,  $P = 0.20$ ). Although albumin was slightly higher in the ED group ( $3.9 \pm 0.7$  g/dL) compared with the non-ED group ( $3.8 \pm 0.6$  g/dL), there was no significant difference ( $P = 0.57$ ).

**Adherence to the elemental diet.** The ED amounts of the subjects are shown in Table 2. In the ED group, only 11 patients (29.7%) were taking an ED of  $\geq 900$  kcal/day; four patients (10.8%) were on < 300 kcal/day; nine patients (24.3%) were on  $\geq 300$  kcal/day but < 600 kcal/day; and 13 patients (35.1%) were on  $\geq 600$  kcal/day but < 900 kcal/day, indicating poor ED adherence even in the ED group. Figure 3 shows the average dosage of enteral nutrition (kcal/day) administration in details. According to the real dosage that the subjects took in the observation periods, we alternatively performed an analysis stratifying the different amounts of ED. However, the analysis also showed no significance according to the real dosage of ED. For instance, when the cutoff was taken to be 600 kcal (in that case, 24 patients were classified as the ED group and 48 as the non-ED group), nine patients





**Figure 2** The cumulative remission rates of the (—) elemental diet (ED) group and the (---) non-ED group determined using the Kaplan–Meier method. There is no significant difference in the cumulative remission rate between the two groups (log-rank test  $P = 0.98$ ). [Color figure can be viewed at [wileyonlinelibrary.com](http://wileyonlinelibrary.com)]

**Table 2** The number of patients according to the average dosage of enteral nutrition administration

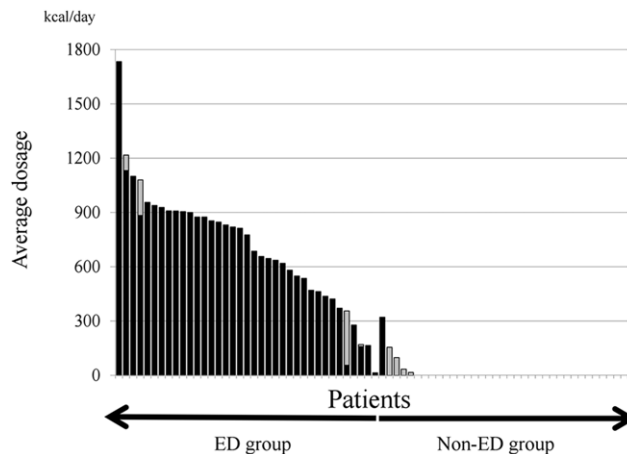
	Dosage of enteral nutrition (kcal/day) <sup>†</sup>				Total
	<300	≤300	≤600	≤900	
ED group ( $n = 37$ )	4 (10.8%)	9 (24.3%)	13 (35.1%)	11 (29.7%)	37
Non-ED group ( $n = 35$ )	34 (97.1%)	1 (2.9%)	0 (0.0%)	0 (0.0%)	35

<sup>†</sup>Average intake of enteral nutrition during 2 years.

ED, elemental diet.

(41.7%) in the ED group and 17 patients (35.4%) in the non-ED group showed clinical relapse. There was no significant difference of cumulative remission rate by log-rank test ( $P = 0.69$ ).

**Risk factors for clinical relapse.** Factor analysis of clinical relapse was conducted using variables such as patient characteristics, treatment history, disease state, and baseline test results. As described in the demographic and baseline characteristics part, there were no significant difference except ED experience between the ED group and the non-ED group. So we mainly selected the items, which were considered as important factors of long-term clinical course of CD, for multivariate analysis. Multivariate analysis showed that intestinal stenosis (hazard ratio [HR]: 4.99, 95% confidence interval [CI]: 1.64–15.18,  $P = 0.005$ ), steroid therapy before anti-TNF induction (HR: 4.02, 95% CI: 1.08–14.89,  $P = 0.038$ ), increased baseline leukocytes ( $> 8000/\text{mm}^3$ ) (HR: 13.83, 95% CI: 3.18–60.12,  $P = 0.0005$ ), and high CRP level ( $> 5 \text{ mg/mL}$ ) (HR: 6.53, 95% CI: 1.75–24.41,  $P = 0.0053$ ) were independent risk factors for clinical relapse (Table 3). Taking ED did not affect the clinical relapse (HR: 1.23, 95% CI: 0.46–3.27,  $P = 0.68$ ).



**Figure 3** The average dosage of enteral nutrition (kcal/day) administration from an observation start until the endpoint achievement. (■)Black bar is elemental diet (ED), and (▒)gray bar is other nutrients (e.g. polymeric formula).

**Safety profile.** Two patients on IFX developed an infusion reaction, and one of these patients discontinued the drug treatment. Three patients on ADA showed redness or a rash at the site of injection. In addition, progressive liver dysfunction and anemia were observed in five and two patients, respectively. Side effects of the ED consisted only of exacerbation of diarrhea in two patients, and none of the patients discontinued the ED because of side effects.

## Discussion

Anti-tumor necrosis factor- $\alpha$  antibody has been reported to be an extremely effective drug for treating CD, with established efficacy, such as long-term steroid-free clinical remission and avoidance of hospitalization and surgery.<sup>1,4,23</sup> On the other hand, LOR is one of the major challenges of anti-TNF treatment and is known to necessitate a dose increase of anti-TNF or additional treatment with drugs such as IMM.<sup>10</sup> However, safety issues, including comorbid malignant diseases such as lymphoma, have been a concern with the concomitant use of IMM.<sup>24,25</sup> Furthermore, the long-term safety of dose escalation of anti-TNF has not been clarified. ED is known to be effective in CD not only through improving the nutritional status but also by minimizing food antigens, acting on mucosal cytokines, normalizing gut permeability, and ameliorating the gut flora.<sup>26–29</sup> Compared with the drugs, ED therapy is extremely safe because of the nature, which consists of the intake of an amino-acid formulation. Based on these properties of an ED, it has been reported recently that the concomitant use of an ED with anti-TNF augments the therapeutic effects, resulting in the maintenance of remission without LOR and continuation of anti-TNF treatment.<sup>18–21</sup> However, most of these were retrospective cohort studies, and only one report was a prospective study.<sup>18</sup> This single-center, prospective, cohort study by Yamamoto *et al.* investigated 56 patients whose remission was induced by IFX, and they found no significant difference in the maintenance of remission during a 56-week follow-up between the ED group (78%) and the non-ED group (67%).<sup>18</sup> As far as we know, the present prospective study was the largest cohort to validate the effects of

**Table 3** Cox regression analysis of predictors in disease relapse

Predictors	Univariate analysis		Multivariate analysis	
	HR (95% CI)	<i>P</i> value	HR (95% CI)	<i>P</i> value
Age (≥51)	1.63 (0.56–4.74)	0.37	1.84 (0.30–11.08)	0.51
Gender (female)	1.58 (0.70–3.58)	0.27	1.99 (0.50–7.96)	0.33
Taking ED	0.99 (0.46–2.14)	0.98	1.23 (0.46–3.27)	0.68
Intestinal stricture	3.64 (1.58–8.39)	0.002	4.99 (1.64–15.18)	0.005
Steroid therapy	2.85 (1.11–7.27)	0.029	4.02 (1.08–14.89)	0.038
WBC <sup>†</sup> (≥8000 mm <sup>3</sup> )	3.90 (1.40–10.90)	0.009	13.83 (3.18–60.12)	0.0005
Albumin <sup>†</sup> (≥3.5 g/dL)	0.21 (0.07–0.61)	0.004	0.44 (0.07–2.71)	0.37
CRP <sup>†</sup> (≥0.5 mg/dL)	4.89 (2.13–11.27)	< 0.001	6.53 (1.75–24.41)	0.0053
CDAI <sup>†</sup> (≥100)	2.07 (0.92–4.65)	0.08	0.56 (0.14–2.20)	0.41
Surgical history	0.33 (0.10–1.06)	0.006	0.58 (0.12–2.69)	0.48

<sup>†</sup>At the time of registration.

CDAI, Crohn's disease activity index; CI, confidence interval; CRP, C-reactive protein; ED, elemental diet; HR, hazard ratio; WBC, white blood cell.

concomitant ED use. The rate of remission maintenance 2 years after anti-TNF- $\alpha$  induction was not significantly different between the ED group (60.9%) and the non-ED group (56.7%). Risk factors for clinical relapse included intestinal stenosis, steroid therapy prior to anti-TNF induction, increased leukocytes, and high CRP levels at baseline, but did not include the absence of ED intake. There are several reasons why this study did not demonstrate the effectiveness of concomitantly taking an ED. First, the cumulative rate of maintaining remission with anti-TNF alone (non-ED group) was higher in this study compared with previous reports. In the actual clinical setting, better treatment effects than the clinical trial data are sometimes observed; thus, even though the number of enrolled patients was essentially as planned, results that were different from the sample size validation conducted at the study planning stage were attained. Moreover, this study included patients who received anti-TNF for the first time and subsequently achieved remission. Our previous retrospective study included all patients on anti-TNF- $\alpha$  maintenance therapy, and this may have led to divergent results between the two studies. Hisamatsu *et al.* investigated the effects of concomitant ED in LOR patients who required a dose increase of IFX (10 mg/kg).<sup>30</sup> This prospective study concluded that IFX with an ED of 900–1200 kcal/day resulted in clear superiority of the subsequent clinical effect compared with IFX without an ED. Based on the overall results from the present study and the previous reports, it is suggested that the concomitant use of an ED is not necessary for patients who achieved remission after the initial induction of anti-TNF; however, the concomitant use of an ED is desirable in patients with LOR. These corroborate the results from a retrospective study by Sugita *et al.* who showed that the effects of a concomitant ED were greater in patients with LOR to ADA than in ADA-naïve patients.<sup>31</sup> Second, validation of adherence, which was one of the secondary endpoints, found poor ED adherence even in the ED group that was composed of patients who wished to receive an ED. Only 11 patients in the ED group were taking the ED of  $\geq 900$  kcal/day, the designated study dose, and it is likely that the non-adherence to the ED was the chief factor affecting the results of this study. While this study did not analyze the reasons for non-adherence, it is necessary in due course to develop a strategy to improve ED adherence.

There are several limitations to this study. First, this was not a randomized, controlled study, and patients were assigned to the ED or non-ED group based on their own wishes. In fact, over 50% of the patients in the ED group had been given an ED previously, and this was significantly greater than the non-ED group, in which about 30% of the patients had been given an ED previously. It was speculated that the patients taking an ED previously might have selected keeping ED because they felt the potential risk of relapse. Moreover, the low number of patients who newly received an ED after anti-TNF- $\alpha$  induction may have also been associated with the absence of effect with taking an ED concomitantly. However, it is not feasible for every patient to take an ED, and this may be the ultimate limitation of a clinical study that investigates the effects of an ED. The non-adherence in the ED group from this study indirectly proves this point. Second, this study did not examine patients' quality of life (QOL). Improvement of QOL is an important treatment goal for CD, and analyses of how an ED affects patients' QOL are likely necessary in the future. Third, in the current study, intestinal stenosis, steroid therapy before anti-TNF induction, increased baseline leukocyte, and high CRP level were independent risk factors for clinical relapse. Steroid dependency, greater baseline leukocyte, and CRP level seem to be the predictive factors of LOR as high disease activity.<sup>7</sup> Intestinal stenosis, which is the main reason for poor long-term outcome in CD patients, is also reasonable as a predictive factor.<sup>32</sup> However, one of the most important factors supposed to be predictors for LOR or dose escalation is anti-TNF inhibitor's serum concentration and antibodies. It was desirable to assess the pharmacokinetics and antidrug antibody of anti-TNF inhibitors for evaluating long-term outcome; however, we could not check them because of the disapproval by Japanese medical insurance.

In conclusion, this investigation was the largest clinical study that prospectively examined whether concomitant ED is beneficial for maintaining remission during anti-TNF- $\alpha$  maintenance therapy. The results did not demonstrate the effectiveness of the concomitant use of an ED, and the added effect of an ED in patients who achieved remission with anti-TNF alone was minimal, indicating that concomitant therapy is not recommended for all patients. However, because non-adherence in the ED group may have affected the study results, further validation with better adherence is

necessary to accumulate evidence for ED use. Furthermore, it is essential to revalidate the effects in different conditions, including patients with LOR.

## Acknowledgments

The authors would like to thank the following participating institutions and physicians for their cooperation in this study. Osamu Zaha (Department of Gastroenterology, Nakagami Hospital), Kunihiro Aoyagi (Department of Gastroenterology, Fukuoka Red Cross hospital), Hiroyuki Kobayashi (Division of Gastroenterology, Fukuoka Sanno Hospital), Kazuoki Hizawa (Department of Gastroenterology, Kyushu Central Hospital of the Mutual Aid Association of Public School Teachers), Kazuya Makiyama (Gastroenterology Unit, Shunkaikai Medical Corporation Inoue Hospital), and Akira Hokama (Department of Infectious Diseases, Respiratory, and Digestive Medicine, Graduate School of Medicine, University of the Ryukyus). The authors would also like to thank Masakazu Washio (Department of Community Health and Clinical Epidemiology, St. Mary's College) for his advice on statistical analysis for this study.

## References

- Hanauer SB, Feagan BG, Lichtenstein GR *et al.* Maintenance infliximab for Crohn's disease: the ACCENT I randomised trial. *Lancet* 2002; **359**: 1541–9.
- Sands BE, Anderson FH, Bernstein CN *et al.* Infliximab maintenance therapy for fistulizing Crohn's disease. *N. Engl. J. Med.* 2004; **350**: 876–85.
- Sandborn WJ, Hanauer SB, Rutgeerts P *et al.* Adalimumab for maintenance treatment of Crohn's disease: results of the CLASSIC II trial. *Gut* 2007; **56**: 1232–9.
- Colombel JF, Sandborn WJ, Rutgeerts P *et al.* Comparison of two adalimumab treatment schedule strategies for moderate-to-severe Crohn's disease: results from the CHARM trial. *Am. J. Gastroenterol.* 2009; **104**: 1170–9.
- Feagan BG, Sandborn WJ, Gasink C *et al.* Ustekinumab as induction and maintenance therapy for Crohn's Disease. *N. Engl. J. Med.* 2016; **375**: 1946–60.
- Gisbert JP, Panés J. Loss of response and requirement of infliximab dose intensification in Crohn's disease: a review. *Am. J. Gastroenterol.* 2009; **104**: 760–7.
- Billioud V, Sandborn WJ, Peyrin-Biroulet L. Loss of response and need for adalimumab dose intensification in Crohn's disease: a systematic review. *Am. J. Gastroenterol.* 2011; **106**: 674–84.
- Ma C, Huang V, Fedorak DK *et al.* Crohn's disease outpatients treated with adalimumab have an earlier secondary loss of response and requirement for dose escalation compared to infliximab: a real life cohort study. *J. Crohns Colitis* 2014; **8**: 1454–63.
- Einarson TR, Bereza BG, Ying Lee X, Lelli F. Dose escalation of biologics in Crohn's disease: critical review of observational studies. *Curr. Med. Res. Opin.* 2017; **33**: 1433–49.
- de Boer NK, Löwenberg M, Hoentjen F. Management of Crohn's disease in poor responders to adalimumab. *Clin. Exp. Gastroenterol.* 2014; **7**: 83–92.
- Ding NS, Hart A, De Cruz P. Systematic review: predicting and optimising response to anti-TNF therapy in Crohn's disease—algorithm for practical management. *Aliment. Pharmacol. Ther.* 2016; **43**: 30–51.
- Colombel JF, Sandborn WJ, Reinisch W *et al.* Infliximab, azathioprine, or combination therapy for Crohn's disease. *N. Engl. J. Med.* 2010; **362**: 1383–95.
- Yarur AJ, Kubiliun MJ, Czul F *et al.* Concentrations of 6-thioguanine nucleotide correlate with trough levels of infliximab in patients with inflammatory bowel disease on combination therapy. *Clin. Gastroenterol. Hepatol.* 2015; **13**: 1118–24.
- Ben-Horin S, Waterman M, Kopylov U *et al.* Addition of an immunomodulatory to infliximab therapy eliminates antidrug antibodies in serum and restores clinical response of patients with inflammatory bowel disease. *Clin. Gastroenterol. Hepatol.* 2013; **11**: 444–7.
- Ungar B, Kopylov U, Engel T *et al.* Addition of an immunomodulator can reverse antibody formation and loss of response in patients treated with adalimumab. *Aliment. Pharmacol. Ther.* 2017; **45**: 276–82.
- Takagi S, Utsunomiya K, Kuriyama S *et al.* Effectiveness of an 'half elemental diet' as maintenance therapy for Crohn's disease: a randomized-controlled trial. *Aliment. Pharmacol. Ther.* 2006; **24**: 1333–40.
- Esaki M, Matsumoto T, Hizawa K *et al.* Preventive effect of nutritional therapy against postoperative recurrence of Crohn disease, with reference to findings determined by intra-operative enteroscopy. *Scand. J. Gastroenterol.* 2005; **40**: 1431–7.
- Yamamoto T, Nakahigashi M, Umegae S, Matsumoto K. Prospective clinical trial: enteral nutrition during maintenance infliximab in Crohn's disease. *J. Gastroenterol.* 2010; **45**: 24–9.
- Sazuka S, Katsuno T, Nakagawa T *et al.* Concomitant use of enteral nutrition therapy is associated with sustained response to infliximab in patients with Crohn's disease. *Eur. J. Clin. Nutr.* 2012; **66**: 1219–23.
- Hirai F, Ishihara H, Yada S *et al.* Effectiveness of concomitant enteral nutrition therapy and infliximab for maintenance treatment of Crohn's disease in adults. *Dig. Dis. Sci.* 2013; **58**: 1329–34.
- Kamata N, Oshitani N, Watanabe K *et al.* Efficacy of concomitant elemental diet therapy in scheduled infliximab therapy in patients with Crohn's disease to prevent loss of response. *Dig. Dis. Sci.* 2015; **60**: 1382–8.
- Nguyen DL, Palmer LB, Nguyen ET, McClave SA, Martindale RG, Bechtold ML. Specialized enteral nutrition therapy in Crohn's disease patients on maintenance infliximab therapy: a meta-analysis. *Therap. Adv. Gastroenterol.* 2015; **8**: 168–75.
- Gomollón F, Dignass A, Annese V *et al.* 3rd European evidence-based consensus on the diagnosis and management of Crohn's disease 2016: part 1: diagnosis and medical management. *J. Crohns Colitis* 2017; **11**: 3–25.
- Osterman MT, Sandborn WJ, Colombel JF *et al.* Increased risk of malignancy with adalimumab combination therapy, compared with monotherapy, for Crohn's disease. *Gastroenterology* 2014; **146**: 941–9.
- Kotlyar DS, Osterman MT, Diamond RH *et al.* A systematic review of factors that contribute to hepatosplenic T-cell lymphoma in patients with inflammatory bowel disease. *Clin. Gastroenterol. Hepatol.* 2011; **9**: 36–41.
- Triantafyllidis JK, Vagianos C, Papalois AE. The role of enteral nutrition in patients with inflammatory bowel disease: current aspects. *Biomed. Res. Int.* 2015; **2015**: 197167. <https://doi.org/10.1155/2015/197167>. Epub 2015 Feb 22.
- Yamamoto T, Nakahigashi M, Saniabadi AR *et al.* Impacts of long-term enteral nutrition on clinical and endoscopic disease activities and mucosal cytokines during remission in patients with Crohn's disease: a prospective study. *Inflamm. Bowel Dis.* 2007; **13**: 1493–501.
- Guzy C, Schirbel A, Paclik D, Wiedenmann B, Dignass A, Sturm A. Enteral and parenteral nutrition distinctively modulate intestinal permeability and T cell function in vitro. *Eur. J. Nutr.* 2009; **48**: 12–21.

- 29 Learch ST, Mitchell HM, Eng WR, Zhang L, Day AS. Sustained modulation of intestinal bacteria by exclusive enteral nutrition used to treat children with Crohn's disease. *Aliment. Pharmacol. Ther.* 2008; **28**: 724–33.
- 30 Hisamatsu T, Kunisaki R, Nakamura S, *et al.* Effect of elemental diet combined with infliximab dose escalation in patients with Crohn's disease with loss of response to infliximab: CERISIER trial. *Intestinal Research* in press.
- 31 Sugita N, Watanabe K, Kamata N *et al.* Efficacy of a concomitant elemental diet to reduce the loss of response to adalimumab in patients with intractable Crohn's disease. *J. Gastroenterol. Hepatol.* 2018; **33**: 631–7.
- 32 Sato Y, Matsui T, Yano Y *et al.* Long-term course of Crohn's disease in Japan: incidence of complications, cumulative rate of initial surgery, and risk factors at diagnosis for initial surgery. *J. Gastroenterol. Hepatol.* 2015; **30**: 1713–9.