

Assessing Phospholipase A₂ Activity toward Cardiolipin by Mass Spectrometry

Yuan-Hao Hsu^{1,2,3*}, Darren S. Dumlao^{2,3}, Jian Cao^{2,3}, Edward A. Dennis^{2,3*}

1 Department of Chemistry, Tunghai University, Taichung, Taiwan, **2** Department of Pharmacology, University of California San Diego, La Jolla, California, United States of America, **3** Department of Chemistry and Biochemistry, University of California San Diego, La Jolla, California, United States of America

Abstract

Cardiolipin, a major component of mitochondria, is critical for mitochondrial functioning including the regulation of cytochrome *c* release during apoptosis and proper electron transport. Mitochondrial cardiolipin with its unique bulky amphipathic structure is a potential substrate for phospholipase A₂ (PLA₂) *in vivo*. We have developed mass spectrometric methodology for analyzing PLA₂ activity toward various cardiolipin forms and demonstrate that cardiolipin is a substrate for sPLA₂, cPLA₂ and iPLA₂, but not for Lp-PLA₂. Our results also show that none of these PLA₂s have significant PLA₁ activities toward dilyso-cardiolipin. To understand the mechanism of cardiolipin hydrolysis by PLA₂, we also quantified the release of monolyso-cardiolipin and dilyso-cardiolipin in the PLA₂ assays. The sPLA₂s caused an accumulation of dilyso-cardiolipin, in contrast to iPLA₂ which caused an accumulation of monolyso-cardiolipin. Moreover, cardiolipin inhibits iPLA₂ and cPLA₂, and activates sPLA₂ at low mol fractions in mixed micelles of Triton X-100 with the substrate 1-palmitoyl-2-arachidonoyl-*sn*-phosphatidylcholine. Thus, cardiolipin functions as both a substrate and a regulator of PLA₂ activity and the ability to assay the various forms of PLA₂ is important in understanding its function.

Citation: Hsu Y-H, Dumlao DS, Cao J, Dennis EA (2013) Assessing Phospholipase A₂ Activity toward Cardiolipin by Mass Spectrometry. PLoS ONE 8(3): e59267. doi:10.1371/journal.pone.0059267

Editor: Boris Zhivotovsky, Karolinska Institutet, Sweden

Received: December 15, 2012; **Accepted:** February 13, 2013; **Published:** March 22, 2013

Copyright: © 2013 Hsu et al. This is an open-access article distributed under the terms of the Creative Commons Attribution License, which permits unrestricted use, distribution, and reproduction in any medium, provided the original author and source are credited.

Funding: This work was supported by the LIPID MAPS Large Scale Collaborative "Glue" Grant U54 GM 069338 and RO-1 GM 50,501-38 to EAD, and National Science Council, Taiwan (101-2113-M-029-001-MY2) to YHH. The funders had no role in study design, data collection and analysis, decision to publish, or preparation of the manuscript.

Competing Interests: The authors have declared that no competing interests exist.

* E-mail: edennis@ucsd.edu (EAD); howardhsu@thu.edu.tw (YHH)

Introduction

Over the past 40 years, scientists have devoted themselves to understanding the enzymes that can hydrolyze the *sn*-2 ester bond of phospholipids to release free fatty acids [1], leading to the discovery of the phospholipase A₂ (PLA₂) superfamily. The free fatty acids released by PLA₂ can be converted to eicosanoids, including the prostaglandins and leukotrienes, which are involved in inflammatory responses [2]. So far, six types including sixteen distinct groups of PLA₂ have been identified (Table 1). The three main types of PLA₂, secreted PLA₂ (sPLA₂), cytosolic PLA₂ (cPLA₂) and Ca²⁺-independent PLA₂ (iPLA₂), were found early and are well-studied; hence several enzymes have been categorized for each type. Platelet activating factor acetylhydrolase (PAF-AH), lysosomal PLA₂ and adipose-specific PLA₂ (Ad-PLA₂) were later discovered and are now part of the phospholipase A₂ superfamily. These PLA₂s can be differentiated by their cellular localization, Ca²⁺ dependence of the activity and their physical properties [3]. The activities and membrane association of sPLA₂(s) and cPLA₂(s) are Ca²⁺ dependent, whereas the activity of iPLA₂, Lp-PLA₂, lysosomal PLA₂ and Ad-PLA₂ are independent of Ca²⁺ [1]. The activation of these PLA₂s have been vigorously investigated and shown to be involved in inflammation, atherosclerosis, cancer, diabetes and neurodegenerative diseases.

The complex anionic phospholipid, cardiolipin, is a major component of the inner membrane of mitochondria and bacterial membranes [4,5,6]. Cardiolipin has been shown to be a substrate of both sPLA₂ and cPLA₂ utilizing a fluorescent labeled

cardiolipin [7,8] and implied to be a substrate for iPLA₂ [9]. Most cardiolipin resides in mitochondria and accounts for 10–20% of the total lipid in mammalian cells. Cardiolipin is an important membrane component maintaining the integrity of mitochondria and is critical for the production of ATP via the electron transport chain [10,11,12] by stabilizing the electron transport chain complex in the inner mitochondrial membrane [13,14]. Cardiolipin associates with the membrane-anchored cytochrome *c* under homeostatic conditions [15]. Oxidative stress causes peroxidation of cardiolipin and thus, hampers the electron transport chain and alters mitochondrial bioenergetics [16,17,18]. When programmed cell death is initiated, the interactions between cytochrome *c* and cardiolipin is disturbed [15,19,20]. Besides its functions in mitochondria, cardiolipin has been shown to be associated with several diseases. Cardiolipin causes the immune response to the anti-cardiolipin antibodies, which has been shown to be associated with increased risks of venous or arterial thrombosis and ischemic coronary and cerebral disease [21,22,23,24]. Cardiolipin is also a significant and normal physiologic component present in human plasma lipoproteins including LDL and HDL [25]. Recently, cardiolipin release from damaged mitochondria has been shown to exacerbate breathing problems of pneumonia patients [26]. Uniquely and more importantly, cardiolipin is a substrate for the PLA₂ superfamily of enzymes; however, their activities *in vitro* have not yet been characterized.

An X-linked tafazzin gene mutation causes the alterations of mitochondrial cardiolipin, including modified acyl chains and accumulation of monolyso-cardiolipin, and with a deficiency in

Table 1. The phospholipase A₂ superfamily.

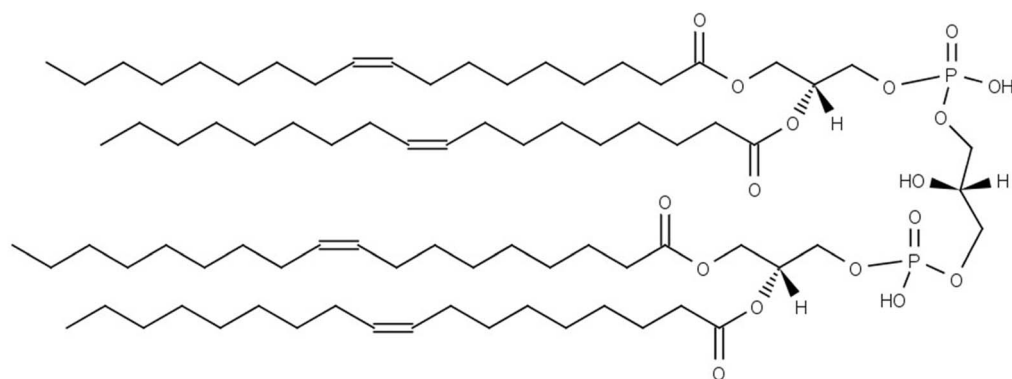
Type	Group	Subgroups	Size (kDa)	Ca ²⁺	Cellular Location	Catalytic Residues
	GI	A, B	13–15			
	GII	A, B, C, D, E, F	13–17			
	GIII		15–18			
	GV		14			
sPLA ₂	GIX		14	Yes	Secreted	His/Asp
	GX		14			
	GXI		12–13			
	GXII		19			
	GXIII		<10			
	GXIV		13–19			
cPLA ₂	GIV	A(α), B(β), C(γ)	60–114	Yes	Cytosol	Ser/Asp
iPLA ₂	GVI	A, B, C, D, E, F	84–90	No	Cytosol Mito.	Ser/Asp
PAF-AH	GVII	A(Lp-PLA ₂), B(PAF-AH II)	40–45	No	LDL, HDL	Ser/His/Asp
	GVIII	α ₁ , α ₂ , β	26–40			
Lysosomal PLA ₂	GXV		45	No	Lysosome	Ser/His/Asp
Adipose-specific PLA ₂ (AdPLA ₂)	GXVI		18	No	Adipocyte	His/Cys

Adapted from Dennis et al [1].
doi:10.1371/journal.pone.0059267.t001

cardiolipin remodeling, many patients further develop Barth syndrome. [9,27,28]. The 85-kDa GVIA iPLA₂ (also known as iPLA₂β) has been shown to localize to mitochondria in many types of cells [29,30,31,32], which indicates iPLA₂ is localized in the proximity of cardiolipin. iPLA₂ was characterized and it showed potent phospholipase, lysophospholipase and transacylase activities toward phosphatidylcholine (PC) which could be blocked by various inhibitors [33,34,35,36]. iPLA₂ has been suggested to be responsible for cardiolipin deacylation and monolyso-cardiolipin accumulation in Barth syndrome and hypertensive heart failure [9,37]. Inhibition of iPLA₂ can suppress the phenotype of tafazzin knockouts in drosophila [9]. The discovery that cardiolipin is involved in Barth syndrome has suggested that the catabolism of cardiolipin by PLA₂ plays a pivotal role in mitochondria

maintenance. iPLA₂ inhibition could be a potential treatment for Barth syndrome patients.

Because radiolabeled cardiolipin is challenging to synthesize, our goal in this study was to develop a mass spectrometry methodology to quantitate PLA₂ activity toward natural and synthetic non-radiolabeled cardiolipin and further understand the activity of PLA₂ toward cardiolipin. We utilized mass spectrometry (GC/MS and LC/MS) to monitor hydrolysis of cardiolipin by the four major types of PLA₂, including GI and GV sPLA₂, cPLA₂, iPLA₂ and Lp-PLA₂ and also determined whether the hydrolysis occurs at the *sn*-1 and/or *sn*-2 positions. Additionally, we obtained further information regarding the interfacial catalytic activities of these PLA₂ enzymes.



Cardiolipin

1',3'-Bis-[1,2-di-(9Z-octadecenoyl)-sn-glycero-3-phospho]-sn-glycerol

Figure 1. Structure of Cardiolipin. The structure of cardiolipin, 1',3'-Bis-[1,2-di-(9Z-octadecenoyl)-sn-glycero-3-phospho]-sn-glycerol, is drawn and adapted from LIPID MAPS (www.lipidmaps.org).
doi:10.1371/journal.pone.0059267.g001

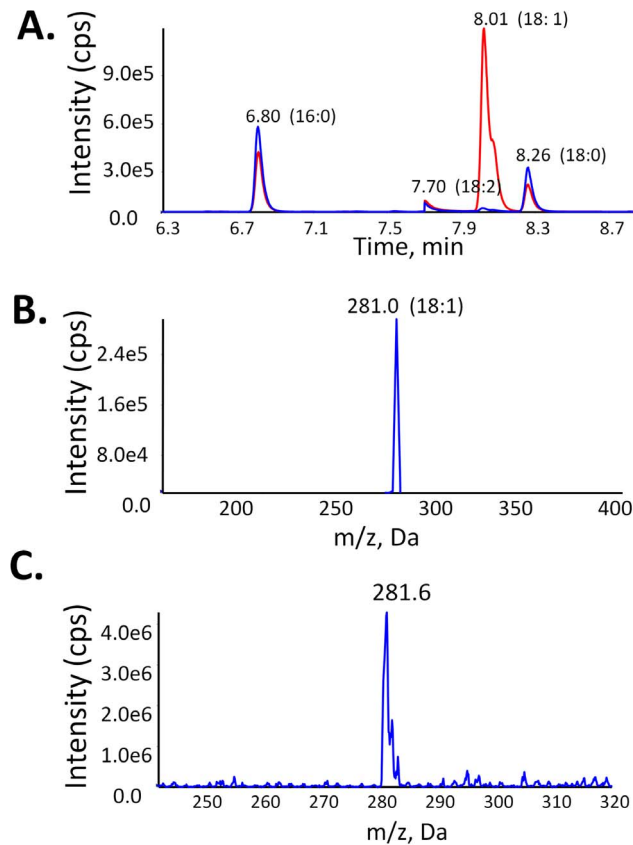


Figure 2. Cardiolipin Hydrolysis by iPLA₂. A. GC/MS analysis of the free fatty acids released from cardiolipin by hydrolysis with (red) and in the absence of (blue) iPLA₂. B. The main mass peak released by iPLA₂ at 8.0 min on GC is oleic acid (18:1). C. LC/MS analysis of the main fatty acid released from cardiolipin hydrolysis by iPLA₂. doi:10.1371/journal.pone.0059267.g002

Materials and Methods

Materials

Natural and synthetic cardiolipin and 1-palmitoyl-2-arachidonoyl-*sn*-phosphatidylcholine (PAPC) were from Avanti Polar Lipids. 1-palmitoyl-2-arachidonoyl- [arachidonoyl-1-¹⁴C]-phosphatidylcholine was purchased from Perkin Elmer. All other reagents were analytical reagent grade or better.

PLA₂ Activity Assay

For the basal specific activity of PLA₂, assays were performed in a buffer composed of 100 mM HEPES at pH 7.5. The mixed micelles were composed of 0.1 mM PAPC (containing ¹⁴C labeled PAPC with 80,000 cpm) and 0.4 mM Triton X-100 in a final volume of 500 μ l. Different compositions of lipid mixed-micelles containing PAPC, cardiolipin and PI(4,5)P₂ were mixed and dried, and then prepared utilizing the same method. ATP, Ca²⁺ and DTT were added depending on the requirement of the particular PLA₂. GIA sPLA₂ and GV sPLA₂ assays were carried out in 5 mM Ca²⁺; GIVA cPLA₂ assays were carried out in 3% PI(4,5)P₂, 2 mM DTT and 0.1 mM Ca²⁺, and GVIA iPLA₂ assays were carried out in 1 mM EDTA, 2 mM ATP and 4 mM DTT. The reaction was initiated by adding PLA₂ to mixed micelles and incubated at 40°C for 30 min. After incubation, the reaction was quenched, and the fatty acids were extracted using a modified Dole assay protocol as previously described [38,39].

Fatty Acid Analysis by GC/MS

For GC/MS analysis, the deuterated internal standards were added before fatty acid extraction for the calibration of extraction efficiency and handling errors. The free fatty acids were analyzed as their pentafluorobenzyl (PFB) bromide derivatives in negative ionization mode [40]. The extracted free fatty acids were taken up in 25 μ l of 1% diisopropylethylamine in acetonitrile and derivatized with 25 μ l 1% PFB bromide in acetonitrile at room temperature for 20 min in capped glass tubes. The solvent was removed by vacuum evaporator, the residue was dissolved in 50 μ l isoctane, and 1 μ l of the PFB esters was analyzed by GC electron capture MS (GC/EC/MS). The fatty acid esters dissolved in 50 μ l isoctane were injected (1 μ l) into an Agilent 6890N gas chromatograph equipped with an Agilent 7683 auto-sampler (Santa Clara CA). The amounts of fatty acids were quantitated by the standard curve between 500 μ g and 0.05 μ g of fatty acids. Extraction and ionization efficiencies were determined for the internal standards by comparing the ion intensity of the samples with those of the extraction controls. The range of efficiency for a typical experiment was between 20 and 75%, with an average of around 50%. PLA₂ activities were calculated by the amount of quantified fatty acids.

Cardiolipin, 1',3'-Bis-[1,2-di-(9Z-octadecenoyl)-sn-glycero-3-phospho]-sn-glycerol, and its PLA₂ hydrolysis products, mono-lyso-cardiolipin and dilyso-cardiolipin were purified by Bligh and Dyer lipid extraction methods [41]. The extracted cardiolipin, mono-lyso-cardiolipin and dilyso-cardiolipin were dried with nitrogen gas at room temperature. Samples were resuspended in 50% solvent A (water-acetonitrile-acetic acid; 70/30/0.02, v/v/v), and 50% solvent B (acetonitrile-isopropyl alcohol; 50/50, v/v). The cardiolipin sample was then injected into a tandem quadrupole mass spectrometer (ABI 4000 Q-Trap MS) by the direct infusion technique. The cardiolipin was analyzed via MS and precursor ion in negative ion mode. The electrospray voltage was -4.5 kV, and the turbo ion spray source temperature was 525°C. The precursor ions of oleic acid (m/z = 281.4) used nitrogen as a collision gas. The cardiolipin (m/z = 728.2), the mono-lyso-cardiolipin (m/z = 596.4) and the dilyso-cardiolipin (m/z = 463.9) were monitored in the negative mode during a precursor scan experiment.

Results and Discussion

PLA₂ Activity Toward Cardiolipin

Cardiolipin has been shown to be a substrate for both cPLA₂ and sPLA₂ using fluorescence labeling substrate [7]. This indicates that the phospholipid *sn*-2 position can be recognized by phospholipase A₂, despite its unique structure containing four fatty acyl chains with a bulky and negatively charged head group (Fig. 1). Whether cardiolipin is also a substrate for iPLA₂ and Lp-PLA₂ was not known. The direct measurement and comparisons of the PLA₂ activity by following fatty acid hydrolysis has not been reported. Here we showed that the hydrolysis of tetraoleoyl(18:1)-cardiolipin can be monitored by measuring the oleic acid released by both GC/MS and LC/ESI-MS/MS (Fig. 2) without fluorescent or radio-labeling. Three common contaminants from single-use glassware during fatty acid derivatization, 16:0, 18:2 and 18:0 do not affect the quantification of 18:1 on GC/MS. Because oleic acid (18:1) is the most abundant fatty acyl chain in the biological samples, measurement of the oleic acid release is the best way to quantify cardiolipin hydrolysis. The advantage of the oleic acid measurement on LC-MS/MS is to avoid those fatty acid contaminants and the oleic acid peak can be isolated in the precursor mode.

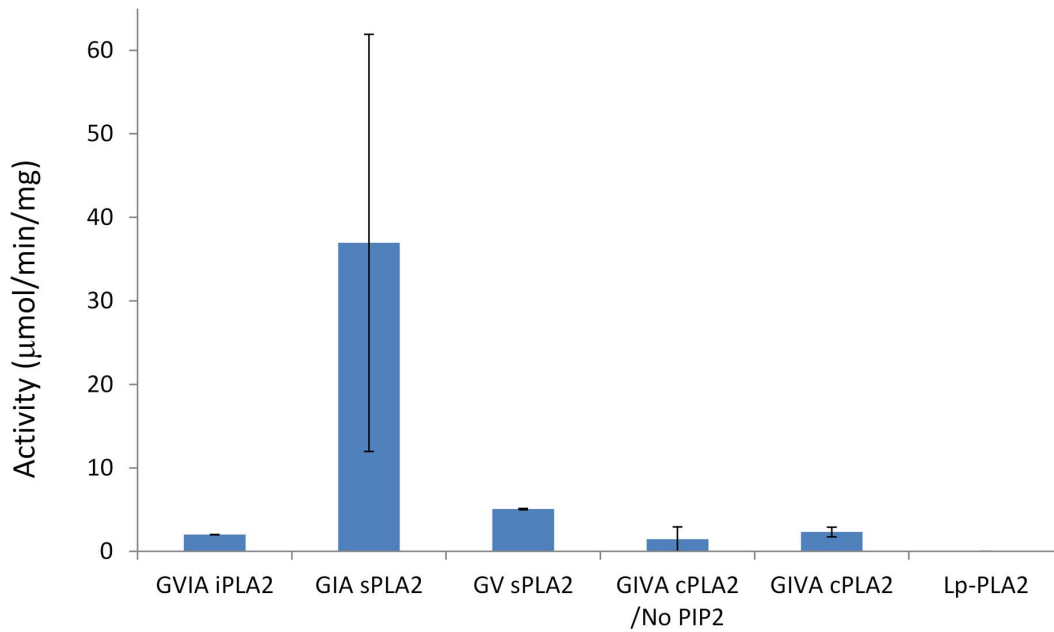


Figure 3. PLA₂s Specific Activities toward Cardiolipin. The activities of GVIA iPLA₂, GIA sPLA₂, GV sPLA₂, GIVA cPLA₂ and Lp-PLA₂, toward cardiolipin were examined by GC mass spectrometry. cPLA₂ activities both with and without PIP₂ activation are shown. doi:10.1371/journal.pone.0059267.g003

We further examined the cardiolipin activities of five different PLA₂ enzymes representing four different PLA₂ types by GC mass spectrometry (Fig. 3). The activities of these five highly purified enzymes, GVIA iPLA₂, GIA sPLA₂, GV sPLA₂, GIVA cPLA₂ and Lp-PLA₂ have been well characterized previously [38,39]. The results show that cardiolipin is a substrate for GVIA iPLA₂, GIA sPLA₂, GV sPLA₂ and GIVA cPLA₂, but not Lp-PLA₂. The specific activities are 2.0 μmol/min/mg for GVIA iPLA₂, 36.9 μmol/min/mg for GIA sPLA₂, 5.0 μmol/min/mg for GV sPLA₂ and 2.3 μmol/min/mg for GIVA cPLA₂. The negatively charged PI(4,5)P₂ binds to cPLA₂ in a 1:1 stoichiometry to increase its enzymatic activity [42]. A lysine pocket in the catalytic domain (Lys488, Lys541, Lys543, and Lys544) was shown to be essential for PIP₂-dependent activity increases [43]. PIP₂ therefore was recognized as an activator of cPLA₂ and was included in the standard assay. Without PIP₂ in the cardiolipin assay, GIVA cPLA₂ showed an activity of 1.4 μmol/min/mg, consistent with the activation of cPLA₂ by PIP₂, though less so than with PAPC as substrate, suggesting perhaps that PIP₂ may have less impact on the negatively charged surface of cardiolipin. Interestingly, GIA sPLA₂ purified from snake venom shows the highest activity among all PLA₂s. The sPLA₂ in the snake venom can cause excessive inflammation when added to tissues through the hydrolysis of phospholipid membranes [44,45].

Lyso-cardiolipin Analysis by LC/MS

The unique structure and the negative charge of cardiolipin stabilize the electron transport chain complex and maintain the structure of mitochondria membranes. Hydrolysis of cardiolipin will inevitably affect the structure and function of mitochondria. We have demonstrated that cardiolipin is a substrate for sPLA₂, cPLA₂ and iPLA₂ (Fig. 2). The hydrolysis of cardiolipin should generate lyso-cardiolipin products and we employed tandem mass spectrometry to monitor the production of these species (Fig. 4).

The dominant fatty acyl on cardiolipin (18:1) peak in mass spectrometry is seen as a doubly charged ion in the negative mode

(Fig. 4A). These two negative charges of cardiolipin are from the two negative charges on the phosphate groups. The cardiolipin was hydrolyzed by iPLA₂ in a mixed-micelle assay and the cardiolipin was extracted by the Bligh/Dyer method and then analyzed by LC/ESI-MS/MS (Fig. 4B). We identified the monolyso-cardiolipin ($m/z = 596.4$) and the dilyso-cardiolipin ($m/z = 463.9$) peaks by monitoring oleic acid ($m/z = 281.4$) in a precursor ion scan experiment. Both lyso-cardiolipins are also doubly charged as is cardiolipin. We have not detected any trilyso-cardiolipins, which would probably be very hydrophilic and not extracted by the current extraction method. Alternatively, iPLA₂ may never cleave the *sn*-1 fatty acyl chain. Interestingly, sPLA₂, which is known to have only *sn*-2 specific activity, only cleaves two fatty acyl chains off the cardiolipin resulting in the accumulation of dilyso-cardiolipin (Fig. 4C). This indicates the two *sn*-2 positions also have significantly higher rates of hydrolysis by PLA₂ than the two *sn*-1 positions for sPLA₂. We further purified the dilyso-cardiolipin from the GIA sPLA₂ assay of cardiolipin. The hydrolyzed products have 90% dilyso-cardiolipin, which is the *sn*-1(1')-diacyl-lysocardiolipin, and contain less than 10% of monolyso-cardiolipin; the latter may arise from migration of the *sn*-1 fatty acid to the *sn*-2 position as occurs with PC. Assaying the five phospholipase A₂s for PLA₁ activity against dilyso-cardiolipin gave no activity.

Differential PLA₂ Activities

The presence of four sterically distinct fatty acyl chains in cardiolipin presents challenges for kinetic studies of PLA₂ hydrolysis. These phospholipase A₂(s) have specific activity against the two *sn*-2 fatty acyl chains, but no activity toward the *sn*-1 chains. Previously, iPLA₂ has been reported to catalyze a transacylase reaction [35]. Cardiolipin, monolyso-cardiolipin and dilyso-cardiolipin can be measured in one mass spectrometry run (Fig. 3). Here, we aimed at understanding how PLA₂ hydrolyzes cardiolipin to produce lyso-cardiolipins over a 2-hour time scale.

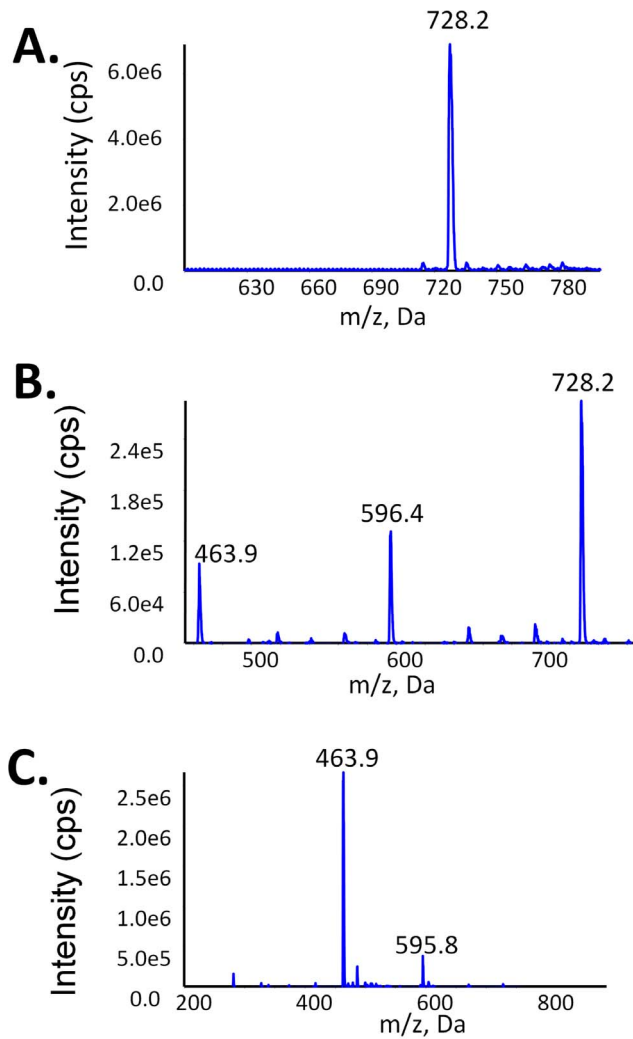


Figure 4. Cardiolipin and Lyso-cardiolipin Analysis by LC/MS. A. The dominant cardiolipin (18:1) peak in mass spectrometry was observed as a doubly charged ion in the negative ion mode. **B.** Cardiolipin was hydrolyzed by iPLA₂ in a mixed-micelle assay and the cardiolipin was extracted by the Bligh/Dyer method and then analyzed by LC/MS. **C.** GIA sPLA₂ hydrolysis of cardiolipin results in the accumulation of mainly dilyso-cardiolipin. doi:10.1371/journal.pone.0059267.g004

The mixed micelle assays contained 100 μ M cardiolipin and 400 μ M of Triton. The cardiolipin, monolyso-, and dilyso-cardiolipin were measured in the same samples by LC-MS/MS (Fig. 4B). The total ion counts for all cardiolipin species were calculated in each sample. The percentages of cardiolipin and lyso-cardiolipin were determined by the ratio of the ion counts for this particular cardiolipin species to the total ion counts (Fig. 5). The two sPLA₂s showed a very similar pattern with the hydrolysis of cardiolipin occurring relatively early in the assay (Fig. 5B, C). The production of monolyso-cardiolipin increased during the initial 20 min and then reached a plateau. Dilyso-cardiolipin production continued through the whole time course. After 60 min, the dilyso-cardiolipin became the most abundant species. On the other hand, iPLA₂ showed a completely different pattern. The cardiolipin percentage remained above 50% and lyso-cardiolipin levels stayed below 30%. The accumulation of dilyso-cardiolipin observed in the sPLA₂ experiments did not occur for iPLA₂ hydrolysis. This indicates that iPLA₂ is regulated by a

different mechanism than sPLA₂ to maintain cardiolipin and lyso-cardiolipin at constant levels.

Cardiolipin Effects on PLA₂ Activities

Cardiolipin is not only a substrate of various PLA₂s, but it may also play a key role in regulating PLA₂ activities at the membrane surface. The catalytic activities of PLA₂ and phospholipid metabolism can be affected by the presence of the bulky and negatively charged cardiolipin. Hence, we have utilized an *in vitro* mixed micelle assay to determine the effect of cardiolipin on the enzymatic activities of five different PLA₂s acting on PAPC (Fig. 6). 1-palmitoyl(16:0)-2-arachidonoyl(20:4)-*sn*-phosphatidylcholine (PAPC) was chosen because it does not interfere with the measurement of the oleic acid (18:1) release from cardiolipin. A total of 100 μ M phospholipid and 400 μ M Triton X-100 was used as substrate. The results showed two major types of cardiolipin effects, activation or inhibition, on PLA₂ activities. The inhibition by cardiolipin was observed for the activity of iPLA₂ and cPLA₂ toward PAPC (Fig. 6A, D). At 50% cardiolipin, iPLA₂ activity was inhibited 80% and cPLA₂ activity was inhibited 90%. The decrease caused by the addition of cardiolipin was not linear. The decreased level was higher than surface dilution of PAPC would predict assuming equal surface areas for Triton X-100, PC and cardiolipin molecules. Of course, the bulky volume of cardiolipin makes the calculation of surface dilution more complex than with simpler lipids in the PAPC/Triton X-100 mixed micelle system. In contrast, activation effects were observed with GIA and GV sPLA₂ acting on PAPC which occurred when the phospholipid composition contained 0–20% cardiolipin (Fig. 6B, C). The PLA₂ activity decreased when the cardiolipin content was above 20%. The decreased rate of activity was similar to that expected for surface dilution of the PAPC, but represents a complex mixture of effects. The maximum increase was 4 fold for both GIA sPLA₂ and GV sPLA₂. In the presence of 50% cardiolipin, the activity for both enzymes toward PAPC was at the same level as if cardiolipin was not added. Note that Lp-PLA₂ did not show significant activity toward PAPC or cardiolipin confirming that it has specificity for short chain containing and/or oxidized phospholipids [46].

Because both cardiolipin and PAPC are substrates for PLA₂, the activation or inhibition curves could be altered by a surface charge effect, a competition effect and/or a surface dilution effect, we further examined the activity differences between these two substrates (Fig. 7). For iPLA₂ and cPLA₂, the activity decreased along with the increase of cardiolipin. The activity of iPLA₂ toward cardiolipin was 2 μ mol/min/mg, which was 3.8 times higher than toward PAPC in this assay. However, cPLA₂ showed the opposite relative activity toward cardiolipin and PAPC. Under activating conditions, GIA sPLA₂ showed a 3 fold greater activity toward PAPC than toward cardiolipin. GV sPLA₂ showed a higher activity toward cardiolipin (18:1) than toward the PAPC substrate. The competition and surface dilution effects did not appear significant when the overall cardiolipin was below 20%. When cardiolipin was increased above 20%, cardiolipin became a major substrate, and then the competition between cardiolipin and PAPC became apparent. sPLA₂ is particularly interesting in that it has high activity against cardiolipin and cardiolipin presence can increase its activity toward phosphatidylcholine. Negative charge may play a key role of the increase of activity, suggesting the hydrolysis of the cardiolipin in mitochondria may speed up the breakdown of other phospholipids by any secreted PLA₂ generated.

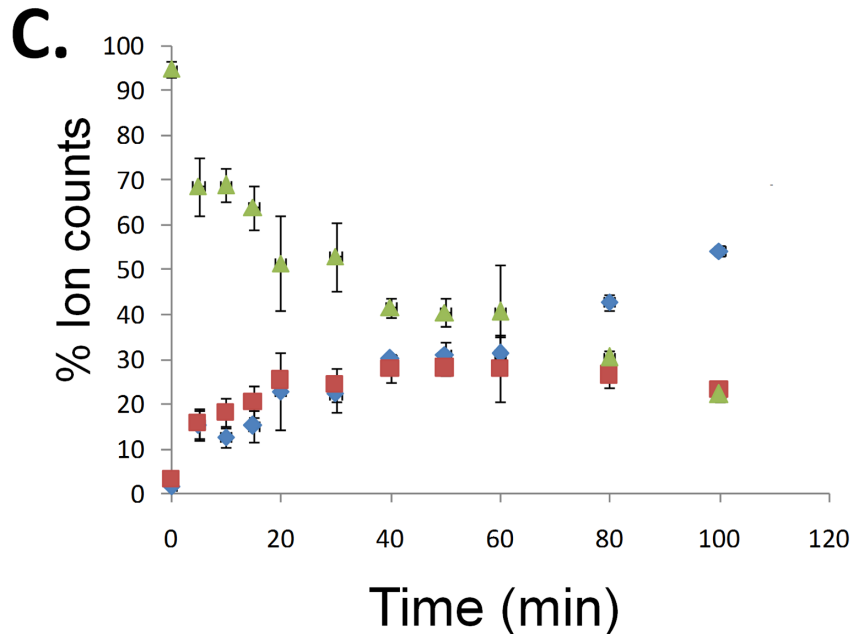
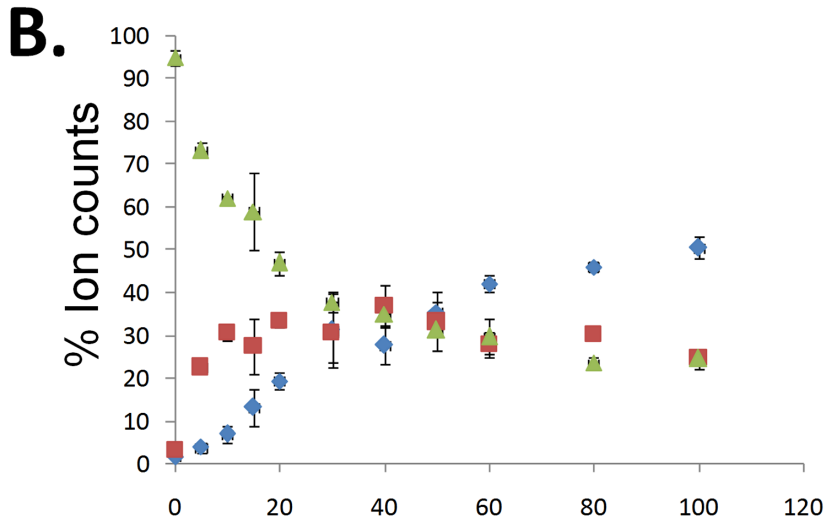
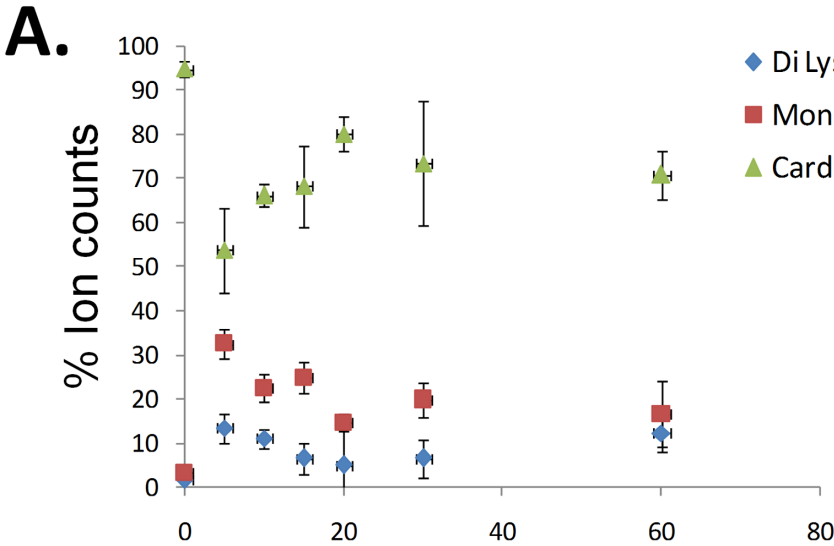


Figure 5. Differential Cardiolipin Hydrolysis by iPLA₂ and sPLA₂. The hydrolysis of cardiolipin by A. GVIA iPLA₂, B. GIA sPLA₂ and C. GV sPLA₂ were examined in mixed micelle assays containing 100 μ M cardiolipin and 400 μ M Triton X-100 over a 100 min time course. The cardiolipin (green), monolyso- (red) and dilyso-cardiolipin (blue) were measured in the same samples by LC/MS. The percentages of cardiolipin and lyso-cardiolipin are based on ion intensity counts.
doi:10.1371/journal.pone.0059267.g005

Conclusions

Each of the five enzymes studied are thought to have a different physiological function and the PLA₂ activities toward cardiolipin as a substrate are significantly different for each (Fig. 7). The unique structure of cardiolipin also differentially affects the PLA₂ activities toward other phospholipids (Fig. 6). Two major features of cardiolipin are the large head group formed by two glycerol backbones and its two negative charges from the two phosphates. One would assume that the large head group would affect the uniform lipid surface and affect activity as seen with iPLA₂ and cPLA₂, but not sPLA₂ and Lp-PLA₂. Interestingly, cPLA₂ and iPLA₂ are the two enzymes with high molecular weights and both contain a regulatory domain and a catalytic domain. Even 5% cardiolipin can decrease their activity toward PC. The other

complication is the surface dilution effect. The addition of cardiolipin dilutes the concentration of PAPC on the surface of the Triton X-100 mixed micelles. The inhibition toward cPLA₂ is more significant than iPLA₂. Note that the cPLA₂ mixed micelle assay contains the negatively charged PIP₂ and the surface dilution effects by cardiolipin may be enhanced by PIP₂ dilution. On the other hand, sPLA₂ is only affected above 20% cardiolipin. Interestingly, cardiolipin is predominantly found in mitochondria, which contains 10–20% cardiolipin. In the mixed micelle assays, the cardiolipin forms a negatively charged surface and sPLA₂ has been shown to favor anionic phospholipid substrates. The increased affinity toward the anionic surface may play an important role. The surface dilution effect starts to take place and decrease the PLA₂ activities when the cardiolipin content is

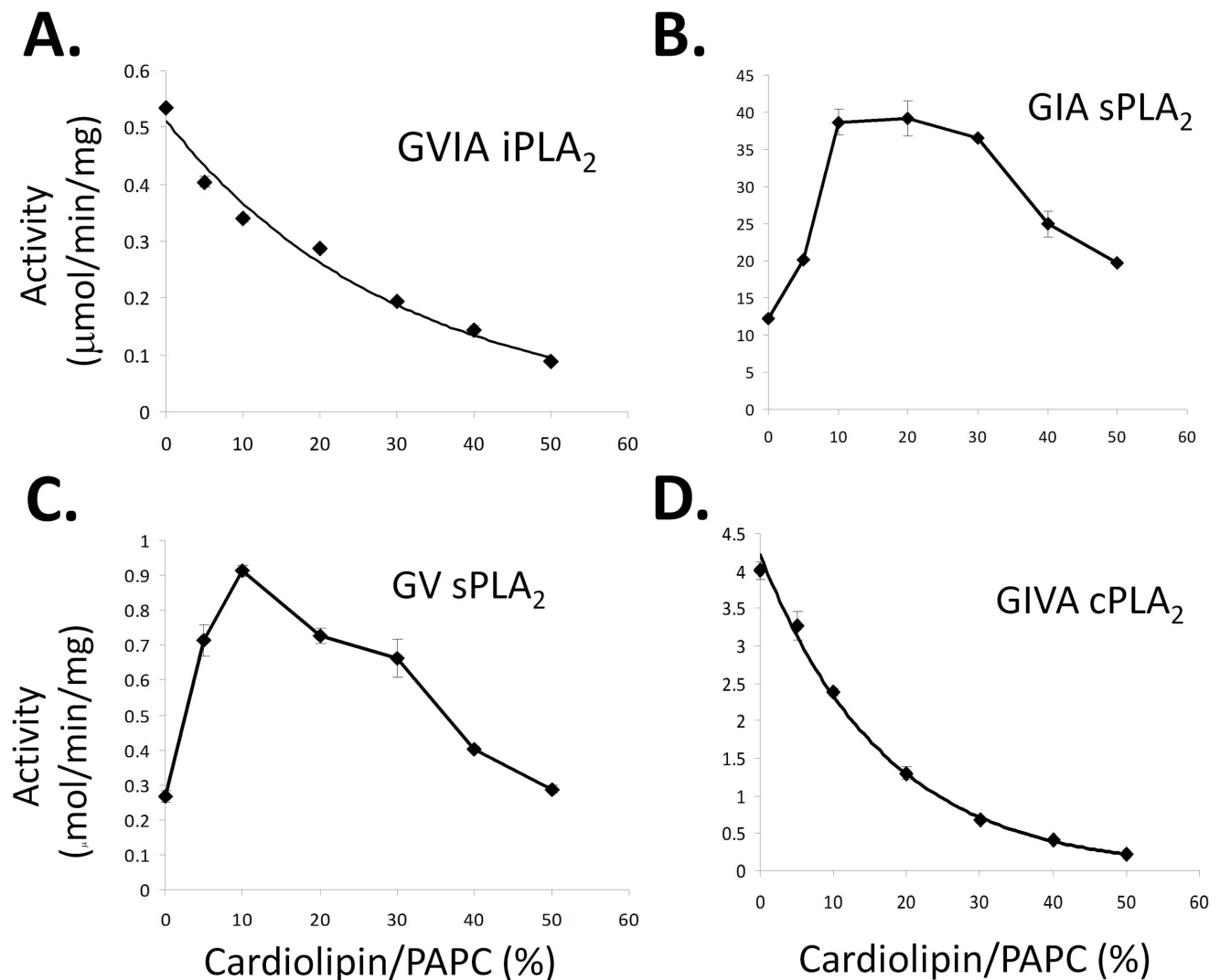


Figure 6. Cardiolipin Effects on PLA₂ Activity toward PAPC. The *in vitro* mixed micelle assay was utilized to determine if cardiolipin affects the enzymatic activities of A. GVIA iPLA₂, B. GIA sPLA₂, C. GV sPLA₂, and D. GIVA cPLA₂ toward PAPC. Mixed micelles composed of 100 μ M phospholipid and 400 μ M Triton X-100 was employed as substrate containing the mole % of cardiolipin to PAPC indicated.
doi:10.1371/journal.pone.0059267.g006

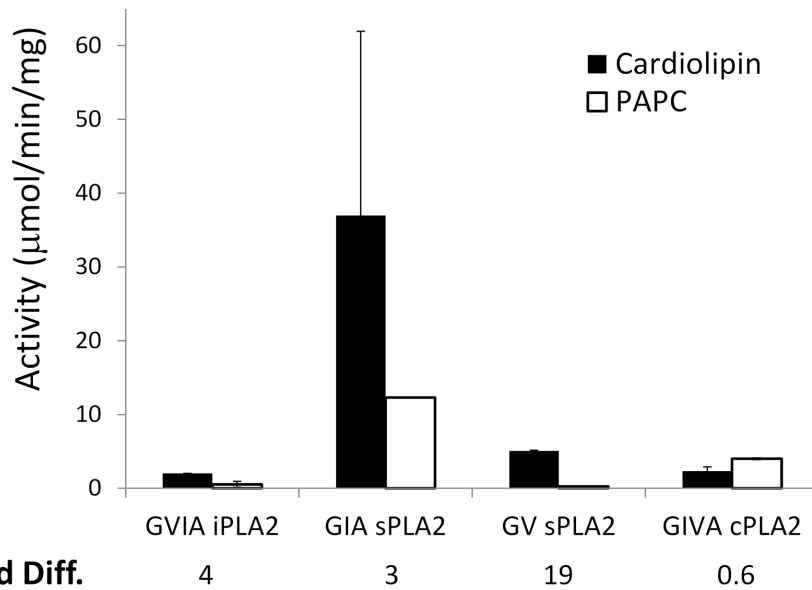


Figure 7. Comparison of PLA₂ activities. The activities of GVIA iPLA₂, GIA sPLA₂, GV sPLA₂, and GIVA cPLA₂ toward cardiolipin (blue) and PAPC (red) are shown. The assays were conducted in mixed micelle assays containing either 100 μM cardiolipin or 100 μM PAPC and 400 μM Triton X-100. The fold differences between cardiolipin and PAPC were calculated and are shown. doi:10.1371/journal.pone.0059267.g007

above 20% in the GIA and GV sPLA₂ assays. Overall, cardiolipin alters membrane dynamics, which affects these different enzymes binding to micelles and catalyzing lipid hydrolysis. The fatty acid composition at the *sn*-2 positions may also be a factor. Among these enzymes, sPLA₂ and iPLA₂ do not have much specificity for the specific fatty acid while cPLA₂ is selective for arachidonic acid and Lp-PLA₂ is very specific for short fatty acyl chains and oxidized fatty acids. Because the availability of commercial

cardiolipins with different fatty acyl composition is limited at this time, we cannot yet address the specificity further.

Author Contributions

Conceived and designed the experiments: YH DD JC ED. Performed the experiments: YH. Analyzed the data: YH DD JC ED. Contributed reagents/materials/analysis tools: YH DD JC ED. Wrote the paper: YH DD JC ED.

References

- Dennis EA, Cao J, Hsu YH, Magrioti V, Kokotos G (2011) Phospholipase A2 enzymes: physical structure, biological function, disease implication, chemical inhibition, and therapeutic intervention. *Chem Rev* 111: 6130–6185.
- Buczynski MW, Dumlao DS, Dennis EA (2009) Thematic Review Series: Proteomics. An integrated omics analysis of eicosanoid biology. *J Lipid Res* 50: 1015–1038.
- Six DA, Dennis EA (2000) The expanding superfamily of phospholipase A(2) enzymes: classification and characterization. *Biochim Biophys Acta* 1488: 1–19.
- Pangborn MC (1947) The composition of cardiolipin. *J Biol Chem* 168: 351–361.
- Hirschberg CB, Kennedy EP (1972) Mechanism of the enzymatic synthesis of cardiolipin in *Escherichia coli*. *Proc Natl Acad Sci U S A* 69: 648–651.
- Hostetler KY, van den Bosch H, van Deenen LL (1972) The mechanism of cardiolipin biosynthesis in liver mitochondria. *Biochim Biophys Acta* 260: 507–513.
- Buckland AG, Kinkaid AR, Wilton DC (1998) Cardiolipin hydrolysis by human phospholipases A2. The multiple enzymatic activities of human cytosolic phospholipase A2. *Biochim Biophys Acta* 1390: 65–72.
- Marinetti GV (1964) Hydrolysis of Cardiolipin by Snake Venom Phospholipase A. *Biochim Biophys Acta* 84: 55–59.
- Malhotra A, Edelman-Novemsky I, Xu Y, Plesken H, Ma J, et al. (2009) Role of calcium-independent phospholipase A2 in the pathogenesis of Barth syndrome. *Proc Natl Acad Sci U S A* 106: 2337–2341.
- Ascenzi P, Politelli F, Marino M, Santucci R, Coletta M (2011) Cardiolipin drives cytochrome c proapoptotic and antiapoptotic actions. *IUBMB Life* 63: 160–165.
- Claypool SM (2009) Cardiolipin, a critical determinant of mitochondrial carrier protein assembly and function. *Biochim Biophys Acta* 1788: 2059–2068.
- Sparagna GC, Lesnefsky EJ (2009) Cardiolipin remodeling in the heart. *J Cardiovasc Pharmacol* 53: 290–301.
- Gomez B Jr, Robinson NC (1999) Phospholipase digestion of bound cardiolipin reversibly inactivates bovine cytochrome bc1. *Biochemistry* 38: 9031–9038.
- Eble KS, Coleman WB, Hantgan RR, Cunningham CC (1990) Tightly associated cardiolipin in the bovine heart mitochondrial ATP synthase as analyzed by 31P nuclear magnetic resonance spectroscopy. *J Biol Chem* 265: 19434–19440.
- Kalanxhi E, Wallace CJ (2007) Cytochrome c impaled: investigation of the extended lipid anchorage of a soluble protein to mitochondrial membrane models. *Biochem J* 407: 179–187.
- Paradies G, Petrosillo G, Pistolesse M, Di Venosa N, Federici A, et al. (2004) Decrease in mitochondrial complex I activity in ischemic/reperfused rat heart: involvement of reactive oxygen species and cardiolipin. *Circ Res* 94: 53–59.
- Lesnefsky EJ, Slabe TJ, Stoll MS, Minkler PE, Hoppel CL (2001) Myocardial ischemia selectively depletes cardiolipin in rabbit heart subsarcolemmal mitochondria. *Am J Physiol Heart Circ Physiol* 280: H2770–2778.
- Paradies G, Petrosillo G, Ruggiero FM (1997) Cardiolipin-dependent decrease of cytochrome c oxidase activity in heart mitochondria from hypothyroid rats. *Biochim Biophys Acta* 1319: 5–8.
- Ott M, Zhivotovsky B, Orrenius S (2007) Role of cardiolipin in cytochrome c release from mitochondria. *Cell Death Differ* 14: 1243–1247.
- Belikova NA, Vladimirov YA, Osipov AN, Kapralov AA, Tyurin VA, et al. (2006) Peroxidase activity and structural transitions of cytochrome c bound to cardiolipin-containing membranes. *Biochemistry* 45: 4998–5009.
- Hughes GR (1983) Thrombosis, abortion, cerebral disease, and the lupus anticoagulant. *Br Med J (Clin Res Ed)* 287: 1088–1089.
- Harris EN, Gharavi AE, Asherson RA, Boyce ML, Hughes GR (1984) Cerebral infarction in systemic lupus: association with anticardiolipin antibodies. *Clin Exp Rheumatol* 2: 47–51.
- Edwards T, Thomas RD, McHugh NJ (1993) Anticardiolipin antibodies in ischaemic heart disease. *Lancet* 342: 989.
- Rand JH, Wu XX, Andree HA, Ross JB, Rusinova E, et al. (1998) Antiphospholipid antibodies accelerate plasma coagulation by inhibiting annexin-V binding to phospholipids: a “lupus procoagulant” phenomenon. *Blood* 92: 1652–1660.
- Deguchi H, Fernandez JA, Hackeng TM, Banka CL, Griffin JH (2000) Cardiolipin is a normal component of human plasma lipoproteins. *Proc Natl Acad Sci U S A* 97: 1743–1748.

26. Ray NB, Durairaj L, Chen BB, McVerry BJ, Ryan AJ, et al. (2010) Dynamic regulation of cardiolipin by the lipid pump Atp8b1 determines the severity of lung injury in experimental pneumonia. *Nat Med* 16: 1120–1127.
27. Valianpour F, Mitsakos V, Schlemmer D, Towbin JA, Taylor JM, et al. (2005) Monolysocardiolipins accumulate in Barth syndrome but do not lead to enhanced apoptosis. *J Lipid Res* 46: 1182–1195.
28. Vreken P, Valianpour F, Nijmans LG, Grivell LA, Plecko B, et al. (2000) Defective remodeling of cardiolipin and phosphatidylglycerol in Barth syndrome. *Biochem Biophys Res Commun* 279: 378–382.
29. Gadd ME, Broekemeier KM, Crouser ED, Kumar J, Graff G, et al. (2006) Mitochondrial iPLA2 activity modulates the release of cytochrome c from mitochondria and influences the permeability transition. *J Biol Chem* 281: 6931–6939.
30. Liou JY, Aleksic N, Chen SF, Han TJ, Shyue SK, et al. (2005) Mitochondrial localization of cyclooxygenase-2 and calcium-independent phospholipase A2 in human cancer cells: implication in apoptosis resistance. *Exp Cell Res* 306: 75–84.
31. Seleznev K, Zhao C, Zhang XH, Song K, Ma ZA (2006) Calcium-independent phospholipase A2 localizes in and protects mitochondria during apoptotic induction by staurosporine. *J Biol Chem* 281: 22275–22288.
32. Song H, Bao S, Lei X, Jin C, Zhang S, et al. (2010) Evidence for proteolytic processing and stimulated organelle redistribution of iPLA(2)beta. *Biochim Biophys Acta* 1801: 547–558.
33. Ackermann EJ, Conde-Frieboes K, Dennis EA (1995) Inhibition of macrophage Ca(2+)-independent phospholipase A2 by bromoenol lactone and trifluoromethyl ketones. *J Biol Chem* 270: 445–450.
34. Lio YC, Reynolds LJ, Balsinde J, Dennis EA (1996) Irreversible inhibition of Ca(2+)-independent phospholipase A2 by methyl arachidonyl fluorophosphate. *Biochim Biophys Acta* 1302: 55–60.
35. Lio YC, Dennis EA (1998) Interfacial activation, lysophospholipase and transacylase activity of group VI Ca2+-independent phospholipase A2. *Biochim Biophys Acta* 1392: 320–332.
36. Hazen SL, Zupan LA, Weiss RH, Getman DP, Gross RW (1991) Suicide inhibition of canine myocardial cytosolic calcium-independent phospholipase A2. Mechanism-based discrimination between calcium-dependent and -independent phospholipases A2. *J Biol Chem* 266: 7227–7232.
37. Zachman DK, Chicco AJ, McCune SA, Murphy RC, Moore RL, et al. (2010) The role of calcium-independent phospholipase A2 in cardiolipin remodeling in the spontaneously hypertensive heart failure rat heart. *J Lipid Res* 51: 525–534.
38. Barbayianni E, Stephens D, Grkovich A, Magrioti V, Hsu YH, et al. (2009) 2-Oxoamide inhibitors of phospholipase A2 activity and cellular arachidonate release based on dipeptides and pseudodipeptides. *Bioorg Med Chem* 17: 4833–4843.
39. Kokotos G, Hsu YH, Burke JE, Baskakis C, Kokotos CG, et al. (2010) Potent and selective fluoroketone inhibitors of group VIA calcium-independent phospholipase A2. *J Med Chem* 53: 3602–3610.
40. Pawlosky RJ, Sprecher HW, Salem N Jr (1992) High sensitivity negative ion GC-MS method for detection of desaturated and chain-elongated products of deuterated linoleic and linolenic acids. *J Lipid Res* 33: 1711–1717.
41. Bligh EG, Dyer WJ (1959) A rapid method of total lipid extraction and purification. *Can J Biochem Physiol* 37: 911–917.
42. Mosior M, Six DA, Dennis EA (1998) Group IV cytosolic phospholipase A2 binds with high affinity and specificity to phosphatidylinositol 4,5-bisphosphate resulting in dramatic increases in activity. *J Biol Chem* 273: 2184–2191.
43. Six DA, Dennis EA (2003) Essential Ca(2+)-independent role of the group IVA cytosolic phospholipase A(2) C2 domain for interfacial activity. *J Biol Chem* 278: 23842–23850.
44. Damerau B, Lege L, Oldigs HD, Vogt W (1975) Histamine release, formation of prostaglandin-like activity (SRS-C) and mast cell degranulation by the direct lytic factor (DLF) and phospholipase A of cobra venom. *Naunyn Schmiedebergs Arch Pharmacol* 287: 141–156.
45. Cirino G, Peers SH, Wallace JL, Flower RJ (1989) A study of phospholipase A2-induced oedema in rat paw. *Eur J Pharmacol* 166: 505–510.
46. Cao J, Hsu YH, Li S, Woods VL, Dennis EA (2011) Lipoprotein-associated phospholipase A(2) interacts with phospholipid vesicles via a surface-disposed hydrophobic alpha-helix. *Biochemistry* 50: 5314–5321.