

SERPINA1 Methylation Levels are Associated with Lung Cancer Development in Male Patients with Chronic Obstructive Pulmonary Disease

Li Yue Zhang^{1,2,*}, Xian Wen Sun^{1,2,*}, Yong Jie Ding^{1,2,*}, Ya Ru Yan^{1,2}, Yi Wang^{1,2}, Chuan Xiang Li¹⁻³, Shi Qi Li^{1,2}, Liu Zhang^{1,2}, He Jie Song^{1,2}, Hong Peng Li^{1,2}, Qing Yun Li^{1,2}

¹Department of Respiratory and Critical Care Medicine, Ruijin Hospital, Shanghai Jiao Tong University School of Medicine, Shanghai, People's Republic of China; ²Institute of Respiratory Medicine, Shanghai Jiao Tong University School of Medicine, Shanghai, People's Republic of China; ³Department of Respiratory and Critical Care Medicine, Tongren Hospital Affiliated to Wuhan University, The Third Hospital of Wuhan, Wuhan, People's Republic of China

*These authors contributed equally to this work

Correspondence: Qing Yun Li, Department of Respiratory and Critical Care Medicine, Ruijin Hospital, Shanghai Jiao Tong University School of Medicine, No. 197, Ruijin Er Road, Shanghai, 200025, People's Republic of China, Email liqingyun68@hotmail.com

Purpose: The mechanism of lung cancer (LC) in male patients with chronic obstructive pulmonary disease (COPD) has not been well understood, and the early diagnosis is currently challenging. The study aimed to explore the association of DNA methylation levels with LC development in male COPD patients.

Patients and Methods: A total of 147 male participants were divided into four groups, ie, COPD+LC group, COPD group, LC group, and control (CON) group. The methylation levels of human serine protease inhibitor A1 (*SERPINA1*) and the serum levels of inflammatory biomarkers were compared among groups. Multivariate logistic regression was performed to explore the correlation of inflammatory biomarkers and gene methylation with lung cancer combining COPD.

Results: *SERPINA1* methylation levels were significantly higher in the COPD+LC group than that in the COPD group and LC group, respectively (all $p < 0.05$). The serum levels of interleukin (IL)-1 β , IL-17, and transforming growth factor (TGF)- β 1 were significantly higher in the COPD+LC group than in the LC group (all $p < 0.05$). The *SERPINA1* methylation levels were positively correlated with the IL-1 β levels ($r = 0.5188$, $p = 0.0012$). The AUC (area under curve) of *SERPINA1* methylation for the diagnosis of LC in COPD was 0.677 (sensitivity of 52.2% and specificity of 78.2%).

Conclusion: The methylation of *SERPINA1* is linked to LC in patients with COPD. The *SERPINA1* methylation levels were positively correlated with the IL-1 β levels. These findings may be of diagnostic value.

Keywords: *SERPINA1* methylation, lung squamous cell carcinoma, chronic obstructive pulmonary disease, male

Introduction

Chronic obstructive pulmonary disease (COPD) is associated with a large public health burden as its high disability and mortality. Lung cancer (LC) is the second most common malignant tumor in the world, accounting for 11.4% of all cancers.¹ Smoking is a common risk factor for COPD and LC, while COPD itself is a high-risk factor for LC.² The development of tumor-associated inflammation has received increasing attention. Studies have explored the genetic susceptibility to LC, epigenetic changes, and DNA damage repair in patients with COPD who develop LC.³ It has been revealed potential links between epigenomics including DNA methylation, non-coding, and microRNA expression, and post-translational modifications of histones and COPD and LC.⁴

The human serine protease inhibitor A1 (*SERPINA1*) gene encoding alpha1-antitrypsin (AAT) is located at chromosome 14q32.13.^{5,6} *SERPINA1* is involved in the pathophysiology of emphysema and it is a biomarker for COPD in individuals exposed to smoke or biofuels.⁷⁻¹² Two family-based cohorts showed that *SERPINA1* methylation was linearly correlated with the severity of lung function in COPD.⁷ It was shown that the *SERPINA1* gene significantly interacted with smoking status, associated with

a higher risk of COPD in Chinese.¹³ In addition, *SERPINA1* seems to be indirectly involved in the distant metastasis of various cancers, including lung, ovarian, cervical, colorectal, and breast tumors.^{14,15} As for lung cancer, a study explored the change of *SERPINA1* was associated with worse survival rates in non-small cell lung cancer (NSCLC).⁸ However, the methylation levels of *SERPINA1* in the male patients with COPD comorbid with LC have not been well studied in detail.

Therefore, the study aimed to explore the association of DNA methylation levels with LC development in male COPD patients.

Materials and Methods

Study Population

In total, 147 participants (male, 40–90 years old) from the Biological Resource Database of Ruijin Hospital (January 2019 to December 2020) were enrolled in the study. The participants in our study were recruited randomly. They were divided into four groups: COPD+LC (n=23), COPD (n=56), LC (n=40), and CON (n=28, healthy subjects without a history of COPD or LC). A postbronchodilator FEV₁/FVC (the ratio of forced expiratory volume in 1s of forced vital capacity) less than 0.70 is required for a diagnosis of COPD, which was diagnosed according to the Global Initiative for Chronic Obstructive Lung Disease Guidelines.¹⁶ Post-bronchodilator spirometry, body plethysmography, and diffusion capacity were measured using the Jaeger MasterScreen™ (CareFusion, Germany). Additionally, the diagnosis of LC was based on the histological findings and TNM stage, as delineated in the 8th edition of American Joint Committee on Cancer.¹⁷ The study was approved by the Ethics Committee of Ruijin Hospital, Shanghai Jiao Tong University School of Medicine, and written informed consent was obtained from all participants. Patients were excluded if they had a history of pneumonia, acute exacerbation of COPD, antibiotic use in the past 3 months, or secondary LC. Exclusion criteria also included a history of asthma, poorly managed cardiovascular disease, arrhythmia, any neurological, endocrinal, immunological, mental, gastrointestinal, hepatic, or hematological abnormalities, and malignancy in any other organ system.

Research Protocol

Clinical data including age, smoking history, lung function parameters including postbronchodilator ratio of forced expiratory volume in 1 second (FEV₁) to forced vital capacity (FVC) (FEV₁/FVC%) and FEV₁ in percent predicted (FEV₁% pred), residual volume to total lung capacity (RV/TLC%), diffusion capacity (transfer factor) for carbon monoxide (DLCO), the pathological type of LC (LUSC [lung squamous cell carcinoma], LUAD [lung adenocarcinoma], SCLC [small cell lung cancer]), and TNM stage (I–II/III–IV) were collected. Tumor biomarkers such as carcinoembryonic antigen (CEA), neuron specific enolase (NSE), squamous cell carcinoma antigen (SCC), cytokeratin 19 fragment antigen 21-1 (CY211), and cancer antigen 125 (CA125) were measured along with the NLR (neutrophil to lymphocyte ratio) using a Cobas E 601 system (Roche Diagnostics, Penzberg, Germany). The serum levels of interleukin (IL)-1 β , IL-17, and transforming growth factor (TGF)- β 1 in the peripheral blood were determined using ELISA kits (Shanghai Fuhan Biotechnology Co., Ltd, Shanghai, China).

To detect the methylation levels of *SERPINA1*, 5mL of venous blood was collected from patients after fasting and added to a sodium citrate-containing anticoagulant tube. For separation, the blood was centrifuged at 2000 rpm for 20 min and stored at 4°C for further examination. Genomic DNA (500ng) was extracted from the peripheral blood using the Zymo-Research Kit. After bisulfite transformation, DNA purification and PCR amplification were performed. Pyrosequencing was used to detect CpG sites. PyroMark software (Qiagen, Hilden, Germany) was used to design specific primers for five CpG sites based on *SERPINA1* sequences (Table 1). Subsequently, PyroMark Q48 (Qiagen, Hilden, Germany) was used to sequence the PCR products. The methylation levels of the target genes were quantified using PyroQ-CpG software (Qiagen, Hilden, Germany).

Statistical Analysis

All Data were analyzed using SPSS, v 21.0 (SPSS Inc., Chicago, IL, USA). Categorical variables were presented as percentages. Continuous variables showing normal distribution were expressed as mean \pm standard deviation and those showing a skewed distribution were expressed as the median (interquartile ranges). Shapiro–Wilk test was used to determine whether the data obeyed homogenous distribution. For homogenous distribution, differences were compared using the *t*-test

Table 1 Primer Sequence Information

Gene	Primer Name	Primer Sequence
<i>SERPINA1</i>	I. <i>SERPINA1</i> -F	GGTGGTGTGTTGAAGTTGAGG
	I. <i>SERPINA1</i> -Rbio	CAAATCCCAACCAATAAACTTAACC
	I. <i>SERPINA1</i> -S	GGAGATAGGGTTTTGT

and one-way ANOVA. Meanwhile, for non-normal distribution, comparisons were performed using the rank-sum test and Kruskal–Wallis rank-sum test. Multiple linear regression was performed to explore the correlation of tumor, inflammatory biomarkers, and gene methylation with LC comorbid with COPD. The methylation levels of the *SERPINA1* were visualized using the ggplot2 3.3.5 package in R 4.0.3 software. The comparisons between tumor biomarkers, Inflammatory biomarkers, and *SERPINA1* methylation levels were visualized using GraphPad Prism v.8 (San Diego, CA, USA). Receiver operating characteristic (ROC) curve analysis was performed to evaluate the sensitivity and specificity of *SERPINA1* methylation levels in predicting patients with COPD comorbid with LC. $P < 0.05$ was considered statistically significant.

Results

Clinical Characteristics

All of the groups contained a high proportion of smokers and ex-smokers, and the smoking index (pack*year, average pack number per day multiplied by years of smoking) in the COPD group was significantly higher than that in the LC group ($p = 0.030$) and CON group ($p < 0.001$). Most tumors were detected in the upper lobe of the lung and for adenocarcinoma is the most common type of tumor. Most patients were in the advanced stage III–IV at the time of enrollment without treatments. The levels of FEV₁/FVC, FEV₁% pred, and DLCO% in the COPD+LC group and COPD group were significantly lower than those in the LC group and CON group ($p < 0.001$, respectively). There was no significant difference in RV/TLC% and age among the four groups (Table 2).

Furthermore, levels of NLR, IL-1 β , IL-17, and TGF- β 1 in the COPD+LC group were higher than those in the other groups ($p < 0.001$). The *SERPINA1* methylation levels in the COPD+LC group were higher than that in the other groups ($p < 0.001$)(Figure 1). The *SERPINA1* methylation levels were negatively correlated with the RV/TLC levels in the COPD group ($r = -0.998$, $p = 0.041$), but there was no correlation between *SERPINA1* methylation levels and FEV₁% in the COPD group and in COPD+LC group, respectively ($p > 0.05$). There was no significant difference in CA125, CEA, NSE, SCC, and CY211 among the four groups (Table 3).

Table 2 Clinical Characteristics of Patients in Different Groups (n=147)

Group	COPD+LC n=23	LC n=40	COPD n=56	CON n=28	F/ χ^2	P
Age, years	66 \pm 2	62 \pm 1	63 \pm 4	57 \pm 2	4.556	0.005
Smoking, ex-/smoker/non-smoker	12/5/6	19/10/11	53/2/1	5/18/5	19.095 [#]	<0.001
Smoking Index	35.4 \pm 6.1	28.3 \pm 3.7	50.6 \pm 12.0	4.8 \pm 2.3	11.543	<0.001
Pathological type, LUSC/LUAD/SCLC	8/10/5	12/23/5	/	/	1.439 [#]	0.487
TNM stage, I–II/III–IV	2/21	4/36	/	/	0.029 [#]	0.865
FEV ₁ /FVC,%	60.6 \pm 12.7	76.5 \pm 4.9	47.3 \pm 12.8	82.2 \pm 4.9	37.177	<0.001
FEV ₁ % pred	54.4 \pm 17.9	78.8 \pm 17.5	54.5 \pm 20.6	73.8 \pm 18.0	6.671	0.001
RV/TLC%	52.5 \pm 10.0	44.9 \pm 11.6	47.6 \pm 4.6	44.7 \pm 14.6	1.512	0.227
DLCO%	57.2 \pm 24.4	79.7 \pm 15.4	56.3 \pm 15.8	65.5 \pm 12.9	4.497	0.009

Note: [#] χ^2 value.

Abbreviations: COPD, chronic obstructive pulmonary disease; LC, lung cancer; CON, control; smoking index, average pack number per day multiplied by years of smoking; LUSC, lung squamous cell carcinoma; LUAD, lung adenocarcinoma; SCLC, small cell lung cancer; TNM, tumor size/lymph nodes/distant metastasis; FEV₁/FVC, the ratio of expiratory volume in the first second to forced vital capacity; FEV₁% pred, percent predicted of forced expiratory volume in the first second%; RV/TLC, residual volume to total lung capacity; DLCO, diffusion capacity (transfer factor) for carbon monoxide.

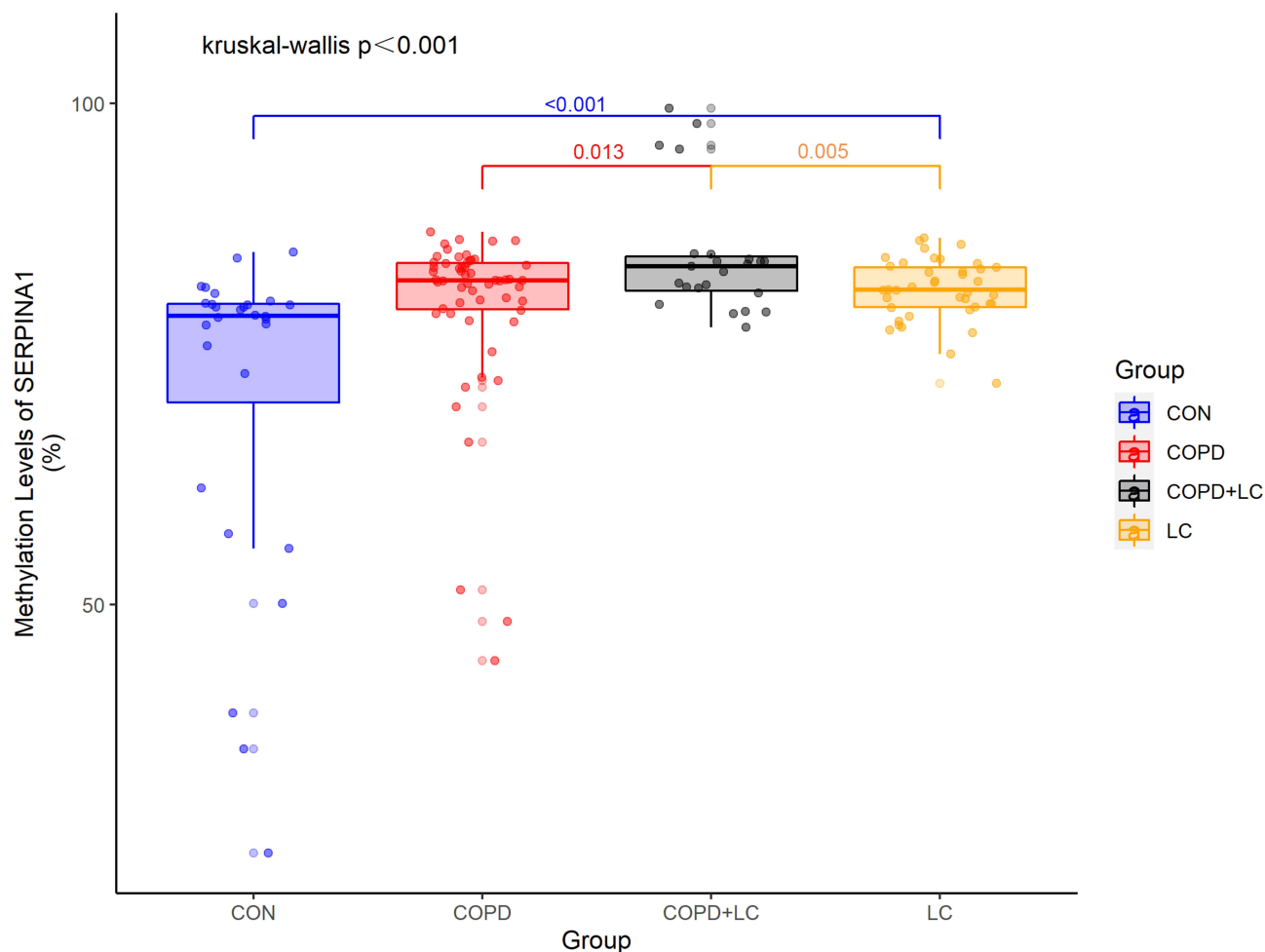


Figure 1 *SERPINA1* methylation levels in four groups. *SERPINA1* methylation levels were higher in the COPD+LC group than those in the COPD group and LC group, respectively. *SERPINA1* methylation levels were higher in the LC group than those in the CON group.

Abbreviations: CON, control; COPD, chronic obstructive pulmonary disease; LC, lung cancer; *SERPINA1*, serine protease inhibitor A1.

The Comparison of Tumor Biomarkers and *SERPINA1* Methylation Levels Between COPD+LC and COPD Groups

To observe the differences between COPD alone and COPD complicated tumor, we compared the differences of tumor biomarkers between the two groups. The Mann–Whitney *U*-test showed that the serum levels of CY211 in COPD+LC group were significantly higher than those in COPD group ($Z = -2.760$, $p = 0.006$). There were no differences in the other tumor biomarkers between the two groups (CA125: $Z = -1.590$, $p = 0.112$; CEA: $Z = -1.650$, $p = 0.099$; SCC: $Z = -1.471$, $p = 0.141$; NSE: $Z = -1.935$, $p = 0.053$) (Figure 2).

SERPINA1 methylation levels were higher in peripheral blood in the COPD+LC group than those in the COPD group ($t = 2.555$, $p = 0.013$). Moreover, the *SERPINA1* methylation levels in the COPD group were higher than those in the CON group ($t = -3.094$, $p = 0.003$) (Figure 1).

The Comparison of Inflammatory Biomarkers and *SERPINA1* Methylation Levels Between COPD+LC and LC Groups

To observe the differences between LC alone and COPD complicated tumors, we compared the differences in inflammatory biomarkers between the two groups. All of the inflammatory levels in the COPD+LC group was higher

Table 3 Biomarkers of Patients in Different Groups (n=147)

Group	COPD+LC n=23	LC n=40	COPD n=56	CON n=28	F	P
CA125*($\mu\text{g/L}$)	28.3(72.0)	19.6(45.3)	17.0(14.8)	36.8(70.9)	0.611	0.610
CEA*($\mu\text{g/L}$)	4.4(42.3)	5.3(30.6)	1.9(3.7)	2.5(2.4)	0.539	0.657
NSE*(ng/mL)	14.6(5.5)	12.6(10.3)	10.2(4.3)	13.3(3.7)	0.673	0.572
SCC*($\mu\text{g/L}$)	1.4(1.2)	1.2(1.4)	1.0(0.5)	1.2(1.4)	0.811	0.493
CY211*($\mu\text{g/L}$)	2.9(3.1)	2.8(5.6)	1.2(0.4)	2.5(2.1)	0.632	0.597
NLR (%)	7.4 \pm 5.4	7.3 \pm 4.7	3.6 \pm 1.9	3.4 \pm 2.3	6.831	<0.001
IL-1 β *(pg/mL)	54.8(31.4)	37.7(10.9)	32.2(14.1)	15.3(9.3)	11.848	<0.001
IL-17*(ng/L)	53.2(30.0)	20.9(22.3)	28.6(16.9)	14.3(12.2)	10.253	<0.001
TGF- β 1*(ng/L)	603.4(175.7)	377.1(180.2)	458.7(235.0)	160.9(57.6)	10.333	<0.001
SERPINA1 (%)	84.8 \pm 6.2	81.4 \pm 3.1	80.0 \pm 8.7	71.3 \pm 16.1	10.207	<0.001

Note: *The median (interquartile interval).

Abbreviations: COPD, chronic obstructive pulmonary disease; LC, lung cancer; CON, control; CA125, cancer antigen 125; CEA, carcinoembryonic antigen; NSE, neuron-specific enolase; SCC, squamous cell carcinoma antigen; CY211, cytokeratin 19 fragment antigen 21-1; NLR, neutrophil-to-lymphocyte ratio; IL-1 β , interleukin-1 β ; IL-17, interleukin-17; TGF- β 1, transforming growth factor- β 1; SERPINA1, serine protease inhibitor A1.

than those in the LC group (IL-1 β : $Z = -3.473$, $p = 0.001$; IL-17: $Z = -3.039$, $p = 0.002$; TGF- β 1: $Z = -2.729$, $p = 0.006$)(Figure 3A–C). Although there was no significant difference in levels of NLR between the COPD+LC group and LC group ($p = 0.729$), the NLR in the LC group was higher than that in the CON group ($t = 3.429$, $p = 0.001$).

SERPINA1 methylation levels were higher in peripheral blood in the COPD+LC group than those in the LC group ($t = 2.901$, $p = 0.005$). Moreover, the SERPINA1 methylation levels in the LC group were higher than those in the CON group ($t = -3.858$, $p < 0.001$) (Figure 1).

Multivariate Linear Regression Analysis for LC Development in COPD

The diagnosis of COPD with LC was set as the dependent variable. The age, tumor biomarkers, inflammatory biomarkers, and methylation levels of SERPINA1 were set as independent variables. The positive results were found in NLR, IL-1 β levels and SERPINA1 methylation levels, which were COPD-related factors associated with LC development (adjusted $R^2 = 0.541$, DW = 2.073; $p < 0.05$) (Table 4). Furthermore, the SERPINA1 methylation levels were positively correlated with the IL-1 β levels ($r = 0.5188$, $p = 0.0012$) (Figure 3D).

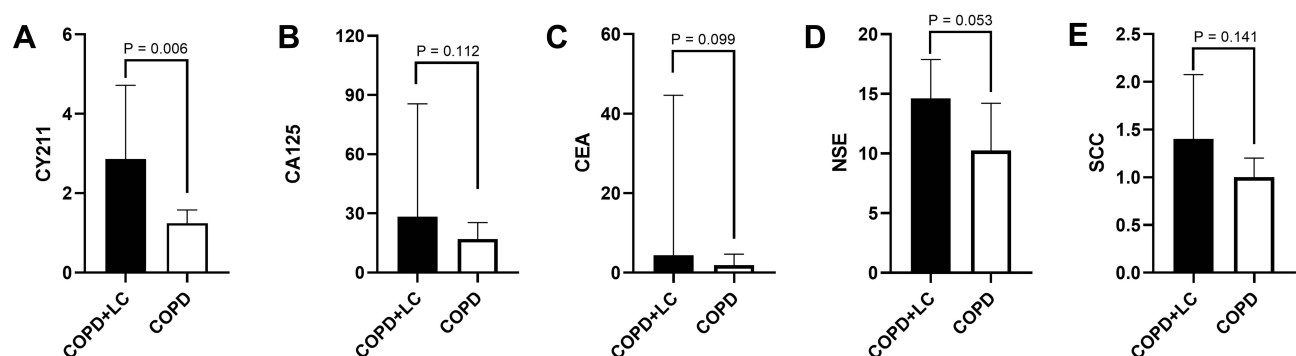


Figure 2 The tumor biomarkers in the COPD+LC group and the COPD group. (A) The levels of CY211 in the COPD+LC group were higher than those in the COPD group. (B) The levels of CA125 were compared between the COPD+LC group and COPD group. (C) The levels of CEA between the COPD+LC group and COPD group. (D) The levels of NSE between the COPD+LC group and COPD group. (E) The levels of SCC between COPD+LC group and COPD group.

Abbreviations: COPD, chronic obstructive pulmonary disease; LC, lung cancer; CY211, cytokeratin 19 fragment antigen 21-1; CA125, cancer antigen 125; CEA, carcinoembryonic antigen; NSE, neuron-specific enolase; SCC, squamous cell carcinoma antigen.

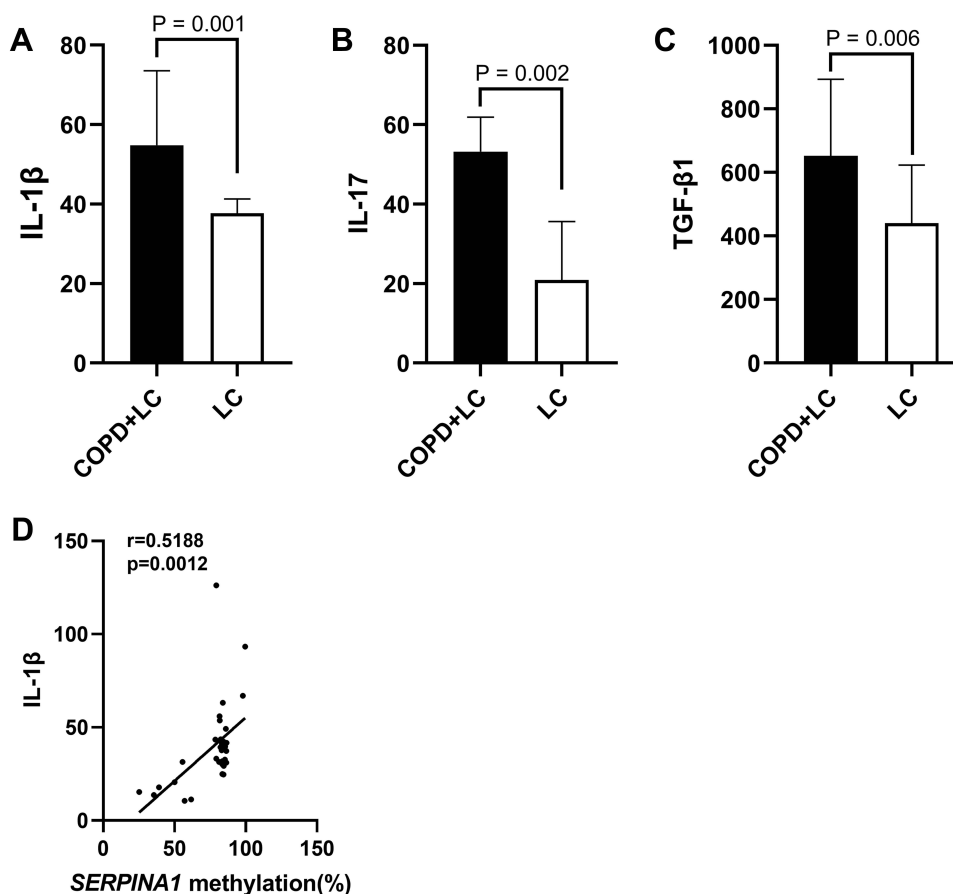


Figure 3 The inflammatory biomarkers in the COPD+LC group and the COPD group. **(A)** The levels of IL-1 β in the COPD+LC group were higher than those in the LC group. **(B)** The levels of IL-17 in the COPD+LC group were higher than those in the LC group. **(C)** The levels of TGF- β 1 in the COPD+LC group were higher than those in the LC group. **(D)** The association with the *SERPINA1* methylation levels and IL-1 β .

Abbreviations: COPD, chronic obstructive pulmonary disease; LC, lung cancer; IL, interleukin; TGF- β 1, transforming growth factor- β 1; *SERPINA1*, serine protease inhibitor A1.

ROC curves were drawn with *SERPINA1* methylation levels as test variables and the occurrence of LC in COPD as the classification variable. The AUC (area under curve) of *SERPINA1* methylation for the diagnosis of LC in COPD was 0.677 (best critical value = 83.7%, sensitivity = 52.2%, and specificity = 78.2%) (Figure 4).

Discussion

Epigenetic modifications, including DNA methylation, gene silencing, and RNA editing, can increase the risk of lung cancer in COPD.¹⁸ Recently, Various studies have proven that methylation levels could be used as markers for the

Table 4 Multiple Linear Regression Analysis of Biomarkers in COPD with LC Development

Biomarkers	<i>b</i>	<i>Sb</i>	<i>P</i>	<i>VIF</i>
NLR	0.111	0.040	0.013	1.473
IL-1 β	-0.034	0.015	0.038	3.682
<i>SERPINA1</i>	0.083	0.020	0.001	4.138

Abbreviations: COPD, chronic obstructive pulmonary disease; LC, lung cancer; IL, interleukin; NLR, neutrophil-to-lymphocyte ratio; *SERPINA1*, serine protease inhibitor A1.

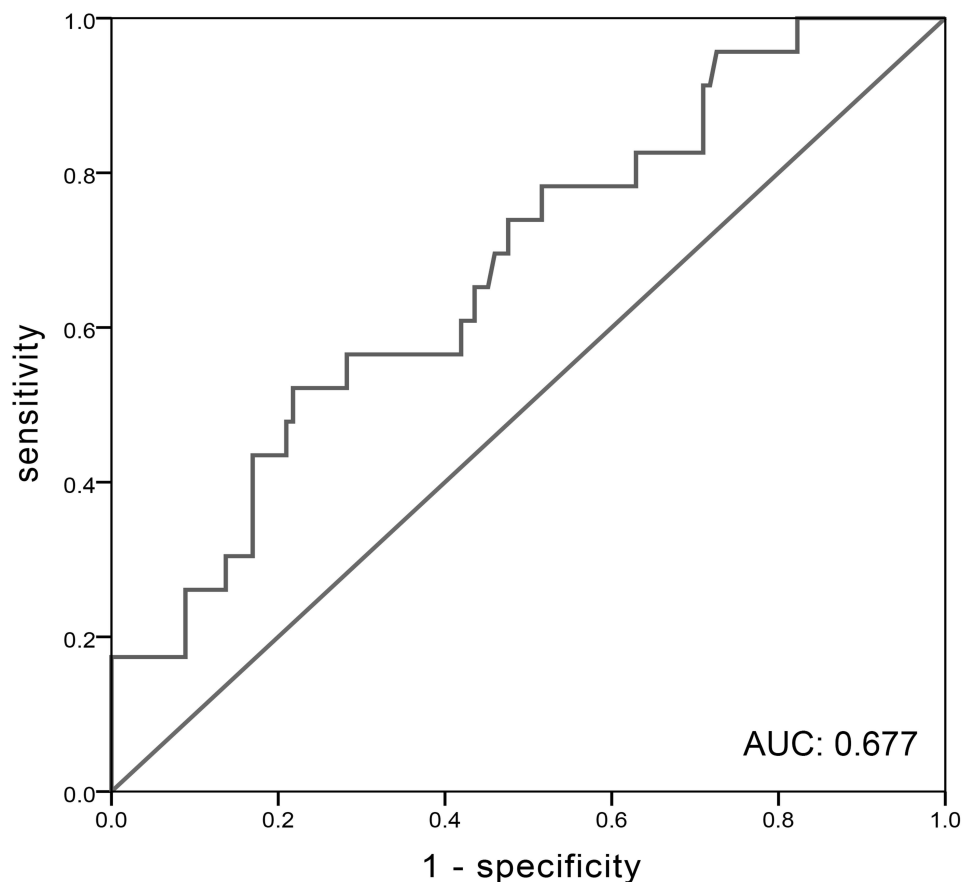


Figure 4 ROC curve for *SERPINA1* methylation levels for diagnosis for lung cancer in patients with chronic obstructive pulmonary disease. The AUC of *SERPINA1* methylation for the diagnosis of LC in COPD was 0.677 (best critical value = 83.7%, sensitivity = 52.2%, and specificity = 78.2%).

Abbreviations: ROC, receiver operating characteristic; AUC, area under curve; *SERPINA1*, serine protease inhibitor A1.

diagnosis of cancer in the early and advanced stages. DNA methylation is a stable alteration that can be easily and rapidly quantified by methylation-specific PCR methods.¹⁹ The present study revealed that male patients in the COPD+LC group have higher levels of serum *SERPINA1* methylation than healthy controls and patients with COPD or LC alone. These results were consistent with those of previous studies showing that *SERPINA1* methylation is positively correlated with lung function and disease severity of COPD patients.⁷

In clinical practice, COPD complicated with LC is remarkably underdiagnosed or diagnosed at an advanced stage, or ineligible for surgery due to poor physical condition. Tumor markers have been mostly used in tumor screening and monitoring, but have not demonstrated accuracy and efficacy in diagnosing lung cancer, especially in COPD patients. The negative comparison results of most tumor biomarkers but CY211 between the COPD+LC and COPD groups might be attributed to the nonspecificity and high sensitivity to various microenvironments in the development of tumor disease.²⁰ But DNA methylation is a relatively stable modification state as early as embryogenesis until old.²¹ The methylation levels of *SERPINA1* could be considered as a good biomarker for the complications via reflecting the change of tumor microenvironment based on COPD.

Smoking exposure results in the infiltration of the mucosa, submucosa, and glandular tissue by inflammatory cells.²² The resulting inflammation is believed to contribute to LC development in patients with COPD.²³ Chronic inflammation alters the cellular levels of inflammatory mediators and activates proto-oncogenes.²⁴ IL-1 β as an important biological marker of oxidative stress in COPD has been found to be associated with LC.^{25,26} Similarly, IL-17 can increase neutrophil capture, and high IL-17 expression is a negative prognostic marker in many cancers, such as gastric, breast, and pancreatic cancer.²⁷ TGF- β 1 is also a useful biomarker of the tumor microenvironment and plays an important role

in epithelial-mesenchymal stability.²⁸ Thus, we also examined the relationship between inflammatory biomarkers and LC comorbid with COPD in this study. The results showed that IL-1 β , IL-17, and TGF- β 1 could be considered biomarkers for auxiliary lung cancer diagnosis in COPD, and IL-1 β positively correlated with the *SERPINA1* methylation levels. However, the mechanism underlying the interaction between methylation and inflammation needs to be explored further.

This study has a few limitations, such as the small sample size and cross-sectional design. A majority of the study population included smokers and III/IV stage patients. All patients enrolled in this study were male patients to avoid the effect of gender on DNA methylation. Although the results showed that there were no significant differences in the tumor location and pathological types between COPD+LC and LC groups, further detailed investigations should be carried out to explore the mechanisms underlying the regulation of *SERPINA1* methylation in COPD and LC.

Conclusion

The methylation of *SERPINA1* is linked to LC in patients with COPD. The *SERPINA1* methylation levels were positively correlated with the IL-1 β levels. These findings may be of diagnostic value.

Data Sharing Statement

The raw data supporting the conclusions of this article will be made available by the authors, without undue reservation.

Ethics Statement and Consent to Participate

The studies involving human participants were reviewed and approved by the Ruijin Hospital Ethics Committee (2019-72). The patients/participants provided their written informed consent to participate in this study. Our study was carried out in accordance with the Declaration of Helsinki.

Author Contributions

All authors made a significant contribution to the work reported, whether that is in the conception, study design, execution, acquisition of data, analysis and interpretation, or in all these areas; took part in drafting, revising or critically reviewing the article; gave final approval of the version to be published; have agreed on the journal to which the article has been submitted; and agree to be accountable for all aspects of the work.

Funding

This study was supported by the National Key R&D Program of China (funding no. 2018YFC1311900), National Natural Science Foundation of China (funding no. 81570082, 81770084); Shanghai Municipal Key Clinical Specialty (shslczdzk02202); Shanghai Top-Priority Clinical Key Disciplines Construction Project (2017ZZ02014); Shanghai Key Laboratory of Emergency Prevention, Diagnosis and Treatment of Respiratory Infectious Diseases (20dz2261100); and Cultivation Project of Shanghai Major Infectious Disease Research Base (20dz2210500).

Disclosure

The authors report no conflicts of interest in this work.

References

1. Sung H, Ferlay J, Siegel RL, et al. Global cancer statistics 2020: GLOBOCAN estimates of incidence and mortality worldwide for 36 cancers in 185 Countries. *CA Cancer J Clin.* 2021;71(3):209–249. doi:10.3322/caac.21660
2. Molins L, Agusti A. Chronic obstructive pulmonary disease and risk of lung cancer: the importance of smoking and timing of diagnosis. *J Thorac Oncol.* 2013;8(4):e34. doi:10.1097/JTO.0b013e318286c1c1
3. Seijo LM, Zulueta JJ. Understanding the links between lung cancer, COPD, and emphysema: a key to more effective treatment and screening. *Oncology.* 2017;31(2):93–102.
4. Ocak S, Sos ML, Thomas RK, Massion PP. High-throughput molecular analysis in lung cancer: insights into biology and potential clinical applications. *Eur Respir J.* 2009;34(2):489–506. doi:10.1183/09031936.00042409
5. Thun GA, Imboden M, Ferrarotti I, et al. Causal and synthetic associations of variants in the SERPINA gene cluster with alpha1-antitrypsin serum levels. *PLoS Genet.* 2013;9(8):e1003585. doi:10.1371/journal.pgen.1003585

6. Beckmeyer-Borowko A, Imboden M, Rezwan FI, et al. SERPINA1 methylation and lung function in tobacco-smoke exposed European children and adults: a meta-analysis of ALEC population-based cohorts. *Respir Res.* 2018;19(1):156. doi:10.1186/s12931-018-0850-8
7. Qiu W, Baccarelli A, Carey VJ, et al. Variable DNA methylation is associated with chronic obstructive pulmonary disease and lung function. *Am J Respir Crit Care Med.* 2012;185(4):373–381. doi:10.1164/rccm.201108-1382OC
8. Pérez-Rubio G, Ambrocio-Ortiz E, López-Flores LA, et al. Heterozygous Genotype rs17580 AT (PiS) in *SERPINA1* is associated with COPD secondary to biomass-burning and tobacco smoking: a case-control and population study. *Int J Chron Obstruct Pulmon Dis.* 2020;15:1181–1190. doi:10.2147/COPD.S247446
9. Ercetin E, Richtmann S, Delgado BM, et al. Clinical Significance of *SERPINA1* gene and its encoded alpha1-antitrypsin protein in NSCLC. *Cancers.* 2019;11(9):1306. doi:10.3390/cancers11091306
10. Senn O, Russi EW, Imboden M, Probst-Hensch NM. alpha1-Antitrypsin deficiency and lung disease: risk modification by occupational and environmental inhalants. *Eur Respir J.* 2005;26(5):909–917. doi:10.1183/09031936.05.00021605
11. Fregonese L, Stolk J. Hereditary alpha-1-antitrypsin deficiency and its clinical consequences. *Orphanet J Rare Dis.* 2008;3:16. doi:10.1186/1750-1172-3-16
12. Borel F, Sun H, Zieger M, et al. Editing out five *Serpina1* paralogs to create a mouse model of genetic emphysema. *Proc Natl Acad Sci U S A.* 2018;115(11):2788–2793. doi:10.1073/pnas.1713689115
13. Deng X, Yuan CH, Chang D. Interactions between single nucleotide polymorphism of *SERPINA1* gene and smoking in association with COPD: a case-control study. *Int J Chron Obstruct Pulmon Dis.* 2017;12:259–265. doi:10.2147/COPD.S116313
14. Scamuffa N, Siegfried G, Bontemps Y, et al. Selective inhibition of proprotein convertases represses the metastatic potential of human colorectal tumor cells. *J Clin Invest.* 2008;118(1):352–363. doi:10.1172/JCI32040
15. Normandin K, Péant B, Le Page C, et al. Protease inhibitor *SERPINA1* expression in epithelial ovarian cancer. *Clin Exp Metastasis.* 2010;27(1):55–69. doi:10.1007/s10585-009-9303-6
16. Singh D, Agusti A, Anzueto A, et al. Global strategy for the diagnosis, management, and prevention of chronic obstructive lung disease: the GOLD science committee report 2019. *Eur Respir J.* 2019;53(5):1900164. doi:10.1183/13993003.00164-2019
17. Siegel RL, Miller KD, Jemal A. Cancer Statistics, 2017. *CA Cancer J Clin.* 2017;67(1):7–30. doi:10.3322/caac.21654
18. Caramori G, Adcock IM, Casolari P, et al. Unbalanced oxidant-induced DNA damage and repair in COPD: a link towards lung cancer. *Thorax.* 2011;66(6):521–527. doi:10.1136/thx.2010.156448
19. Constâncio V, Nunes SP, Henrique R, Jerónimo C. DNA methylation-based testing in liquid biopsies as detection and prognostic biomarkers for the four major cancer types. *Cells.* 2020;9(3):624. doi:10.3390/cells9030624
20. Schiffman JD, Fisher PG, Gibbs P. Early detection of cancer: past, present, and future. *Am Soc Clin Oncol Educ Book.* 2015;57–65. doi:10.14694/EdBook_AM.2015.35.57
21. Klutstein M, Nejman D, Greenfield R, Cedar H. DNA methylation in cancer and aging. *Cancer Res.* 2016;76(12):3446–3450. doi:10.1158/0008-5472.CAN-15-3278
22. O'Donnell DE. Hyperinflation, dyspnea, and exercise intolerance in chronic obstructive pulmonary disease. *Proc Am Thorac Soc.* 2006;3(2):180–184. doi:10.1513/pats.200508-093DO
23. Decramer M, Janssens W, Miravittles M. Chronic obstructive pulmonary disease. *Lancet.* 2012;379(9823):1341–1351. doi:10.1016/S0140-6736(11)60968-9
24. Schetter AJ, Heegaard NH, Harris CC. Inflammation and cancer: interweaving microRNA, free radical, cytokine and p53 pathways. *Carcinogenesis.* 2010;31(1):37–49. doi:10.1093/carcin/bgp272
25. Kim RY, Pinkerton JW, Essilfie AT, et al. Role for NLRP3 Inflammasome-mediated, IL-1 β -dependent responses in severe, steroid-resistant Asthma. *Am J Respir Crit Care Med.* 2017;196(3):283–297. doi:10.1164/rccm.201609-1830OC
26. Ridker PM, MacFadyen JG, Thuren T, Everett BM, Libby P, Glynn RJ. Effect of interleukin-1 β inhibition with canakinumab on incident lung cancer in patients with atherosclerosis: exploratory results from a randomised, double-blind, placebo-controlled trial. *Lancet.* 2017;390(10105):1833–1842. doi:10.1016/S0140-6736(17)32247-X
27. Zhang Y, Chandra V, Riquelme Sanchez E, et al. Interleukin-17-induced neutrophil extracellular traps mediate resistance to checkpoint blockade in pancreatic cancer. *J Exp Med.* 2020;217(12):e20190354. doi:10.1084/jem.20190354
28. Saito A, Horie M, Nagase T. TGF- β signaling in lung health and disease. *Int J Mol Sci.* 2018;19(8):2460. doi:10.3390/ijms19082460

Publish your work in this journal

The International Journal of COPD is an international, peer-reviewed journal of therapeutics and pharmacology focusing on concise rapid reporting of clinical studies and reviews in COPD. Special focus is given to the pathophysiological processes underlying the disease, intervention programs, patient focused education, and self management protocols. This journal is indexed on PubMed Central, MedLine and CAS. The manuscript management system is completely online and includes a very quick and fair peer-review system, which is all easy to use. Visit <http://www.dovepress.com/testimonials.php> to read real quotes from published authors.

Submit your manuscript here: <https://www.dovepress.com/international-journal-of-chronic-obstructive-pulmonary-disease-journal>