

# Vitrification of mouse embryos using the thin plastic strip method

Eun Kyung Ryu<sup>1</sup>, Yong Soo Hur<sup>1,2</sup>, Ji Young Ann<sup>1</sup>, Ja Young Maeng<sup>1</sup>, Miji Park<sup>3</sup>, Jeong Hyun Park<sup>2</sup>, Jung Yoon<sup>4</sup>, San Hyun Yoon<sup>4</sup>, Chang Young Hur<sup>1</sup>, Won Don Lee<sup>1</sup>, Jin Ho Lim<sup>1</sup>

<sup>1</sup>Maria Fertility Hospital, Seoul; <sup>2</sup>Department of Anatomy, Kangwon National University School of Medicine, Chuncheon; <sup>3</sup>Pyungchon Maria Fertility Hospital, Anyang; <sup>4</sup>Maria Research Center, Seoul, Korea

**Objective:** The aim of this study was to compare vitrification optimization of mouse embryos using electron microscopy (EM) grid, cryotop, and thin plastic strip (TPS) containers by evaluating developmental competence and apoptosis rates.

**Methods:** Mouse embryos were obtained from superovulated mice. Mouse cleavage-stage, expanded, hatching-stage, and hatched-stage embryos were cryopreserved in EM grid, cryotop, and TPS containers by vitrification in 15% ethylene glycol, 15% dimethylsulfoxide, 10 µg/mL Ficoll, and 0.65 M sucrose, and 20% serum substitute supplement (SSS) with basal medium, respectively. For the three groups in which the embryos were thawed in the EM grid, cryotop, and TPS containers, the thawing solution consisted of 0.25 M sucrose, 0.125 M sucrose, and 20% SSS with basal medium, respectively. Rates of survival, re-expansion, reaching the hatched stage, and apoptosis after thawing were compared among the three groups.

**Results:** Developmental competence after thawing of vitrified expanded and hatching-stage blastocysts using cryotop and TPS methods were significantly higher than survival using the EM grid ( $p < 0.05$ ). Also, apoptosis positive nuclei rates after thawing of vitrified expanded blastocysts using cryotop and TPS were significantly lower than when using the EM grid ( $p < 0.05$ ).

**Conclusion:** The TPS vitrification method has the advantages of achieving a high developmental ability and effective preservation.

**Keywords:** Container; Apoptosis; Vitrification; Mice; Embryos

## Introduction

In 1985, the first report of the successful birth of a mouse following cryopreservation of embryos by vitrification was published [1]. In the past decade, various new methods for embryo cryopreservation have been published [2]. Many investigators have also reported on the relative efficiency of cryopreservation according to the embryo culture environment, cryoprotectant modification, and cryopreservation container. Recent vitrification containers, such as electron microscope

(EM) grids [3-6], open pulled straws (OPS) [7-12], open hemi-straws [13,14], cryoloops [15-19], and cryotops [20-23] have improved the development of vitrification, which has led to the successful production of offspring from vitrified-warmed embryos. However, the disadvantages of these containers include their sensitivity to time, proper training needed for technique, and cost [24-26].

The EM grid was the first container in which both a small sample volume and direct contact with liquid nitrogen (LN<sub>2</sub>) was achievable to obtain the very high cooling rates required for vitrification [3]. However, even these protocols with the EM grid have produced the formation of a vapor coat around the microdrop, as it directly drops onto the LN<sub>2</sub>. On the other hand, the cryotop has been developed for the vitrification of mammalian embryos [20]. The embryos with cryoprotectant can be loaded onto the strip. The sample is then immersed into LN<sub>2</sub> for vitrification. This also allows for higher cooling, is easy to learn, and is simple to manipulate [27]. However, a disadvan-

Received: Aug 19, 2012 · Revised: Sep 12, 2012 · Accepted: Oct 15, 2012

Corresponding author: **Eun Kyung Ryu**

Maria Fertility Hospital, 20 Cheonho-daero, Dongdaemun-gu, Seoul 130-812, Korea

Tel: +82-2-2250-5371 Fax: +82-2-2250-5585 E-mail: ekryu@mariababy.com

This is an Open Access article distributed under the terms of the Creative Commons Attribution Non-Commercial License (<http://creativecommons.org/licenses/by-nc/3.0/>) which permits unrestricted non-commercial use, distribution, and reproduction in any medium, provided the original work is properly cited.

tage of this protocol with the cryotop is a greater expense compared to other vitrification containers.

Hence, we propose the use of the thin plastic strip (TPS) as a container for mouse embryo vitrification. The TPS vitrification container, consisting of polychlorotrifluoroethylene, is used to load a film of cryoprotectant containing the mouse embryos and enables facile manipulation during vitrification and warming. This method was modified from a procedure routinely used successfully with several other containers. The embryo is then directly immersed in LN<sub>2</sub>.

Confirming the effectiveness of vitrification containers, cryopreservation of mouse embryos has revealed developmental competence. In particular, apoptosis is crucially involved in development and differentiation. Environmental stress such as cryopreservation can induce unscheduled apoptosis during culture, which might lead to arrest or abnormal development and lower viability of embryos [28-30]. Therefore, embryo qualities are related to the ratio of the number of intact to damaged blastomeres, known as the apoptotic index. Poor grade embryos show a higher apoptotic index. The evaluation of DNA fragmentation by terminal deoxynucleotidyl transferase mediated dUTP nick end labeling (TUNEL) has been used as a reliable method for detection of apoptosis in embryos [31].

The objective of the present study was to evaluate the novel TPS vitrification method for the cryopreservation of mouse embryos followed by IVF. Also, the effect of TPS on embryonic development and the apoptosis rate in mouse embryos was examined.

## Methods

### 1. Chemicals

Unless noted otherwise, all chemicals used in the present study were purchased from Sigma Chemical Co. (St. Louis, MO, USA).

### 2. Ethical approval for scientific research

All animal care and use procedures were approved by the Institutional Animal Care and use Committee of Kangwon National University.

### 3. Embryo collection and culture

Six-week-old female imprinting control region mice were superovulated with an injection of 7.5 IU of pregnant mare serum gonadotropin (Invervet, Boxmeer, Netherlands) followed by 7.5 IU of hCG (Invervet) after 48 hours. After administration of the hCG, females were mated with males, and the copulation plugs were checked the following morning. Twenty hours after hCG injection, the female mice were sacrificed, and zygotes were collected with flushing from the oviduct. The one-cell embryos were denuded with hyaluronidase and washed two times in mouse tubal fluid (MTF) containing 4 mg/

mL human serum albumin (Irvine Scientific, Santa Ana, CA, USA) and cultured into MTF medium at 37°C in an atmosphere of 5% CO<sub>2</sub>. Sixty-four hours and 112 hours after hCG injection, vitrified cleavage and blastocyst stages, respectively, resulted.

### 4. Vitrification of embryos

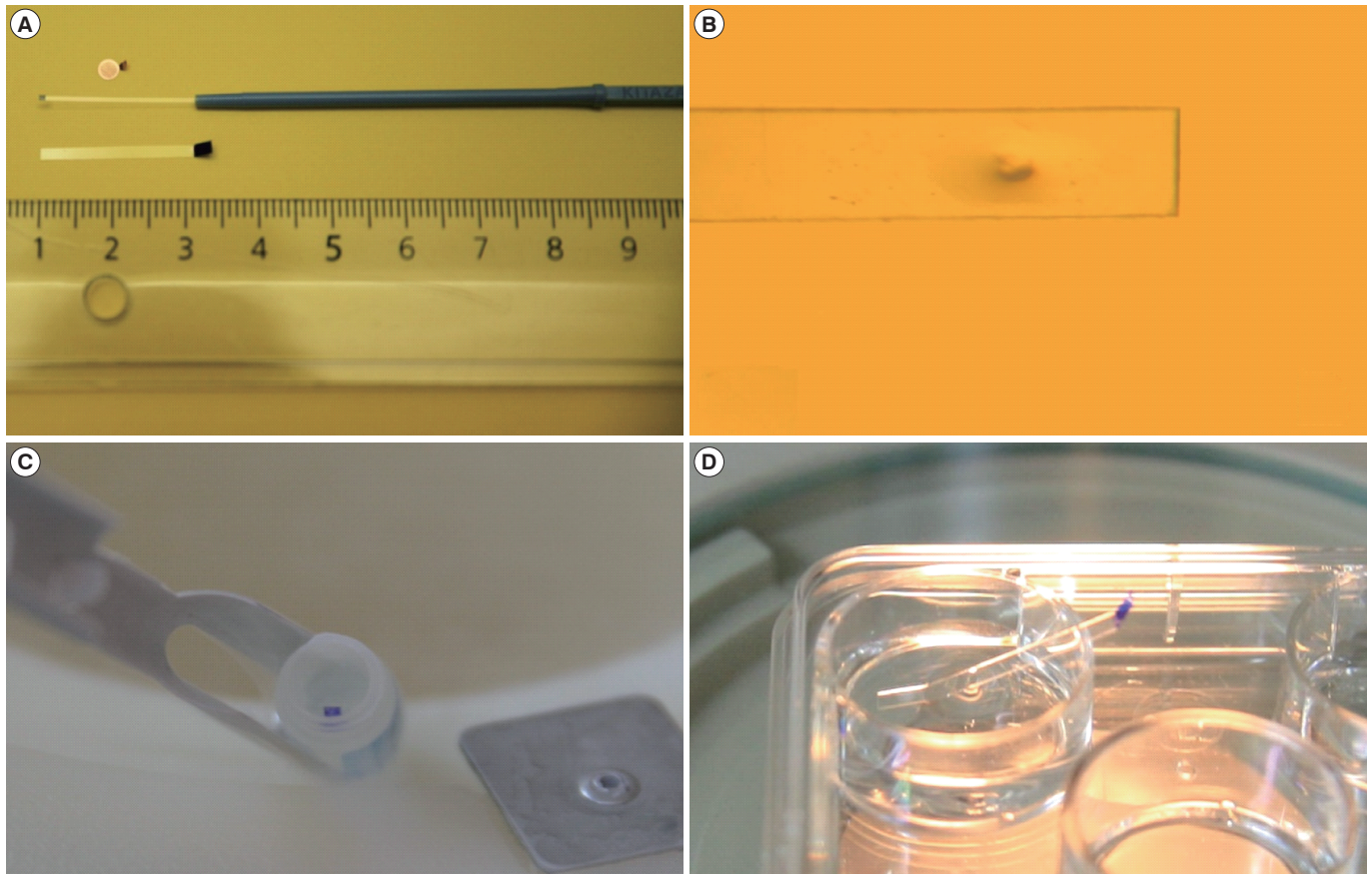
Vitrification of cleavage-stage embryos and blastocysts was performed as described previously [31,32]. Briefly, embryos were transferred into vitrification solution 1 (VS1) consisting of 7.5% ethylene glycol (EG) and 7.5% dimethyl sulphoxide (DMSO) dissolved in Dulbecco's phosphate buffered saline (D-PBS) supplemented with 20% serum substitute supplement (SSS, Irvine Scientific) for 2 minutes in cleavage-stage embryos and 3 minutes in expanded, hatching, and hatched embryos. After an initial shrinkage, embryos were transferred into vitrification solution 2 (VS2) consisting of 15% EG, 15% DMSO, 10 µg/mL Ficoll, and 0.65 M sucrose dissolved in D-PBS supplemented with 20% SSS for 45 second. All the steps were performed at 37°C. After the exposure to VS2, embryos were quickly loaded into an EM grid, cryotop (Kitazato Ltd., Tokoyo, Japan), or our newly developed TPS container, and plunged into LN<sub>2</sub>. In the case of the expanded embryos, artificial shrinkage was performed using two 29-gauge needles. The TPS was manufactured by cutting a section 1.5 mm wide × 25 mm long from polychlorotrifluoroethylene film (sheet thickness, 0.1 mm; SPL Life Science, Seoul, Korea) and equipped with a 5 minutes movable grip at the end. The loaded TPS container was then plunged into the LN<sub>2</sub> using forceps and was subsequently transferred into a cryovial under LN<sub>2</sub> (Figure 1).

### 5. Warming of embryos

Each EM grid, cryotop, or TPS containing embryos was transferred for 2 minutes to warming solution 1 containing 0.25 M sucrose dissolved in D-PBS and supplemented with 20% SSS. The embryos were then transferred to warming solution 2 containing 0.125 M sucrose dissolved in DPBS supplemented with 20% SSS for 3 minutes. All of the steps were performed at 37°C. The embryos were then washed three times in MRC#46 medium (Biosupply, Seoul, Korea) and cultured in a multi-well dish for further culture at 37°C in an atmosphere of 5% CO<sub>2</sub>. The post-thawing survival of the embryos was observed under an inverted microscope 3 to 72 hours after warming (Figure 2).

### 6. TUNEL assay

Embryos were fixed in 4% paraformaldehyde in PBS for 30 minutes at room temperature, followed by three washes in PBS containing 0.3% polyvinylalcohol (PVA). The embryos were permeabilized with 0.1% Triton X-100 for 10 minutes at 4°C, followed by three washes in PBS containing 0.3% PVA. The embryos were incubated in TUNEL reaction solution (Roche Applied Science, Mannheim, Germany) at



**Figure 1.** Images of the electron microscopy grid, cryotop, and thin plastic strip (TPS) container (A), mouse embryos loaded onto TPS (B), TPS positioned into a cryovial (C), and the thawing procedure of TPS (D).

37°C for 1 hour in the dark. The embryos were washed three times and mounted in 4', 6-diamidino-2-phenylindole (DAPI, Vector Laboratories, Burlingame, CA, USA). The embryos in the mounting drops were covered with a cover slip. Embryos were examined under a fluorescence microscope (Olympus, Tokyo, Japan) using the TUNEL assay and DAPI. The number of apoptotic nuclei and total number of nuclei were determined.

### 7. Statistical analyses

The different groups were compared using analysis of variance (Tukey's test) and chi-square test as needed for each case.

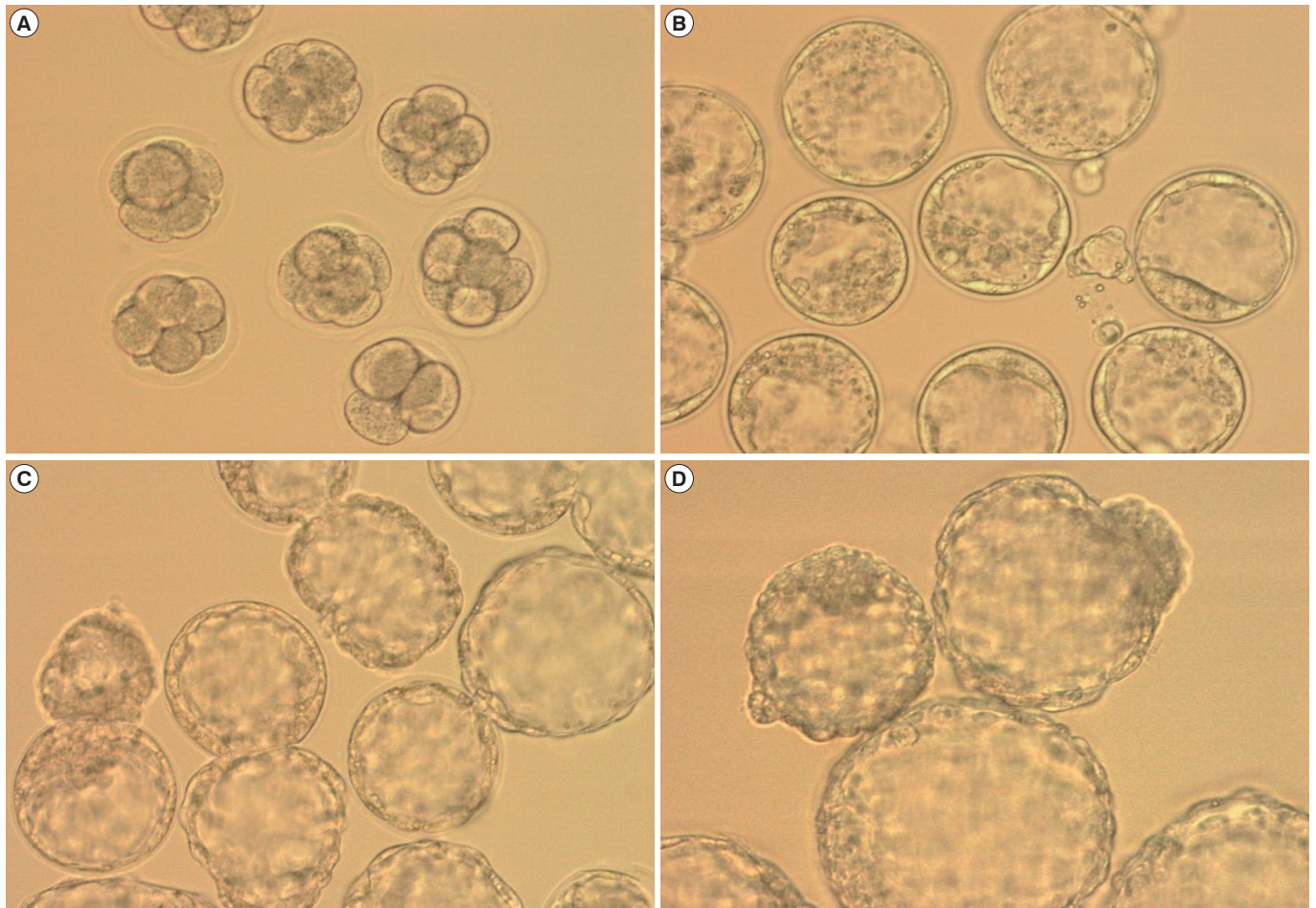
## Results

In the first series of experiments, we evaluated the effect of different container types (EM grid, TPS, and cryotop) during the vitrification of cleavage-stage mouse embryos. The survival, developmental competence, and apoptosis rates for cleavage-stage mouse embryos cryopreserved in the EM grid ( $n = 105$ ), cryotop ( $n = 105$ ), and TPS ( $n = 104$ ) containers are shown in Table 1. There were no significant

differences among the three groups with regard to survival and developmental rates. The total number of cells and rate of cell apoptosis of cleavage-stage embryos vitrified-warmed on TPS ( $77.1 \pm 5.1$  and  $1.6 \pm 0.9$ ) were also similar to those vitrified-warmed on an EM grid ( $75.3 \pm 5.8$  and  $1.5 \pm 0.8$ ) and cryotop ( $77.3 \pm 8.5$  and  $2.1 \pm 0.9$ ).

In the second series of experiments, the efficiency of vitrification containers was compared by using expanded mouse blastocysts. There was no significant difference in the re-expansion rates among the EM grid (80.5%), TPS (92.0%), and cryotop (92.6%) methods. The survival rates observed using the TPS, cryotop, and EM grid were significantly different (100% vs. 96.9% vs. 93.4%). The hatching rates of blastocysts following vitrification-warming on TPS (100%) were significantly higher than those following vitrification-warming on the EM grid (87.6%) and cryotop (94.7%), which were significant at the  $p < 0.001$  level. On the other hand, the total cell numbers of the blastocysts increased significantly in the vitrified-warmed embryos on the TPS ( $92.3 \pm 10.8$ ) and cryotop ( $95.7 \pm 10.2$ ) container compared with the EM grid ( $80.4 \pm 8.9$ ). The rate of apoptotic-positive cells in the blastocysts decreased significantly in the vitrified-warmed embryos on the TPS ( $3.1 \pm 0.9$ ) and cryotop ( $5.1 \pm 1.3$ ) container com-





**Figure 2.** Morphology patterns of mouse embryos. Cleavage-stage embryos after being vitrified-warmed (A,  $\times 200$ ), expanded embryos after being vitrified-warmed (B,  $\times 200$ ), hatching-stage embryos after being vitrified-warmed (C,  $\times 200$ ), and hatched-stage embryos after being vitrified-warmed (D,  $\times 200$ ).

**Table 1.** Effect of vitrification containers on the developmental competence and apoptosis rate of cleavage-stage mouse embryos after vitrification and warming

Group	Embryos examined	Surviving embryos	Blastocysts produced <sup>a</sup>	Hatching-stage blastocysts <sup>b</sup>	No. of total cells	Apoptotic cells
EM grid	105	100 (95.2)	91 (91.0)	80 (80.0)	75.3 $\pm$ 5.82	1.59 $\pm$ 0.87
TPS	104	102 (98.1)	93 (91.2)	81 (79.4)	77.1 $\pm$ 5.15	1.64 $\pm$ 0.92
Cryotop	105	102 (97.1)	92 (90.2)	82 (80.4)	77.3 $\pm$ 8.58	2.12 $\pm$ 0.93
<i>p</i> -value		0.4915	0.9673	0.9846	0.7843	0.4023

Values are presented as number (%) or mean  $\pm$  SD. Values with different superscripts within columns are not significant different at  $p > 0.05$ . Survived embryos, produced blastocysts and hatching blastocysts: chi-square test.

No. of total cells, No. (%) of apoptotic cells: analysis of variance (Tukey's test); EM, electron microscopy; TPS, thin plastic strip.

<sup>a</sup>After warming, the embryos were cultured *in vitro* for 48 hours, and the rate of reaching the blastocyst stage was assessed; <sup>b</sup>After warming, the embryos were cultured *in vitro* for 72 hours, and the hatching rate of the embryos was assessed.

pared with the EM grid (8.3  $\pm$  2.9) at the  $p < 0.001$  level.

In the third series of experiments, the efficiency of the vitrification containers was compared using mouse hatching blastocysts. The survival and re-expansion rates for hatching mouse embryos cryopreserved by the EM grid and TPS methods are shown in Table 2. There

was no significant difference in the re-expansion rates and hatched rates between the EM grid (92.7% and 60.4%) and TPS (92.5% and 75.5%) methods. However, the survival rates of embryos using the TPS (100%) were higher than those using the EM grid (92.2%) method ( $p < 0.05$ ).



**Table 2.** Effect of vitrification containers on the developmental competence of hatching-stage mouse blastocysts after vitrification and warming (chi-square test)

Group	Embryos examined	Survived embryos	Re-expanded blastocysts <sup>a</sup>	Hatched blastocysts <sup>b</sup>
EM grid	51	47 (92.2)	44 (92.7)	29 (60.4)
TPS	53	53 (100)	49 (92.5)	40 (75.5)
<i>p</i> -value		0.0376	0.8838	0.1044

Values are presented as number (%).

EM, electron microscopy; TPS, thin plastic strip.

<sup>a</sup>After warming, the embryos were cultured *in vitro* for 3 hours, and the re-expansion rate of the embryos was assessed; <sup>b</sup>After warming, the embryos were cultured *in vitro* for 24 hours, and the rate of reaching the hatched stage was assessed.

**Table 3.** Effect of vitrification containers on the developmental competence of hatched-stage mouse blastocysts after vitrification and warming (chi-square test)

Group	Embryos examined	Surviving embryos	Re-expanded blastocysts <sup>a</sup>
EM grid	49	43 (87.8)	19 (44.2)
TPS	54	52 (96.3)	45 (86.5)
<i>p</i> -value		0.1058	<0.0001

Values are presented as number (%).

EM, electron microscopy; TPS, thin plastic strip.

<sup>a</sup>After warming, the embryos were cultured *in vitro* for 3 hours, and the re-expansion rate of the embryos was assessed.

In the fourth series of experiments, the efficiency of the vitrification containers was compared using mouse hatched blastocysts. The survival rates for hatched mouse embryos cryopreserved by the EM grid and TPS methods are shown in Table 3. There was no significant difference in survival rates between the EM grid and TPS methods (87.8% vs. 96.3%, respectively). However, the re-expanded rates following the TPS method were higher than with the EM grid method (86.5% vs. 44.2%, respectively;  $p < 0.05$ ).

## Discussion

Vitrification of mouse embryos has been performed in a variety of vitrification containers using the EM grid [33,34], cryotop [22,35,36], cryoloop [15], and OPS [10-12] methods. In this study, to develop a simple, rapid, cost-effective, and successful material for simultaneous vitrification, we investigated the effects of cleavage-stage mouse embryos and blastocysts during vitrification using several types of containers. The new container, TPS, displayed advantages that included loading on a surface prepared from commonly available non-slippery material, ease of portability with a grip, and ability to directly plunge into LN<sub>2</sub> for storage. The post-warming developmental ability of embryos vitrified-warmed on TPS was comparable to those vitrified-warmed on the EM grid and cryotop, and was effective as judged by the apoptosis index score.

The major damaging factors that occur during cryopreservation in-

clude chilling injury, osmotic stress, cryoprotectant toxicity, and ice crystallization [28-30]. Kuwayama et al. [37] reported that use of a cryotop container improves the survival rate of vitrified-warmed embryos and has advantages over conventional vitrification procedures, in that the small volume (< 1  $\mu$ L) results in both rapid and uniform heat exchange during cooling. The rapid cooling rate that is also obtained with the cryotop prevents chilling injury to sensitive cells [20]. Son et al. [4] reported the use of an EM grid for vitrification of human embryos. The EM grid was originally designed for vitrification of exceedingly chill-sensitive *Drosophila* embryos [3]. Characteristically, the EM grid has an approximately 3-fold higher cooling rate than that obtained with the OPS container. Also, the increased rate of cooling could decrease the chilling injury of embryos during vitrification [3,38]. Based on these reports, we suggested that the synergistic effect of the TPS container may allow easy and rapid vitrification in commonly available non-narrow materials and by direct plunging into LN<sub>2</sub> for storage. An additional advantage of the TPS container is that it effectively reduces ice crystal formation because of the enhanced cooling rate. In our study, a significantly higher developmental ability of expanded, hatching-stage, and hatched-stage blastocysts that were vitrified-warmed on the TPS container, and survived, re-expanded, and hatched-stage after culture, was observed compared to those that were vitrified-warmed on the EM grid container tested in this study ( $p < 0.05$ ) (Tables 2-4). On the other hand, contrary to our expectations, the developmental rates of vitrified-warmed cleavage-stage embryos using a TPS container were similar to those vitrified-warmed on EM grid and cryotop containers (Table 1). However, it provides an open container system vitrification wherein embryos come into direct contact with LN<sub>2</sub>. Thus, one fault in the use of the TPS container could be possible safety issues arising from contaminated LN<sub>2</sub> or infected embryos during storage. Therefore, for its use in humans, further studies are required to screen for microbial infection and store embryos separately after vitrification using TPS as a container [39]. Therefore, we suggest that the major concerns needing to be addressed by users in considering carrier devices are the holding capacity, aseptic stringency, convenience of handling, and economic issues.

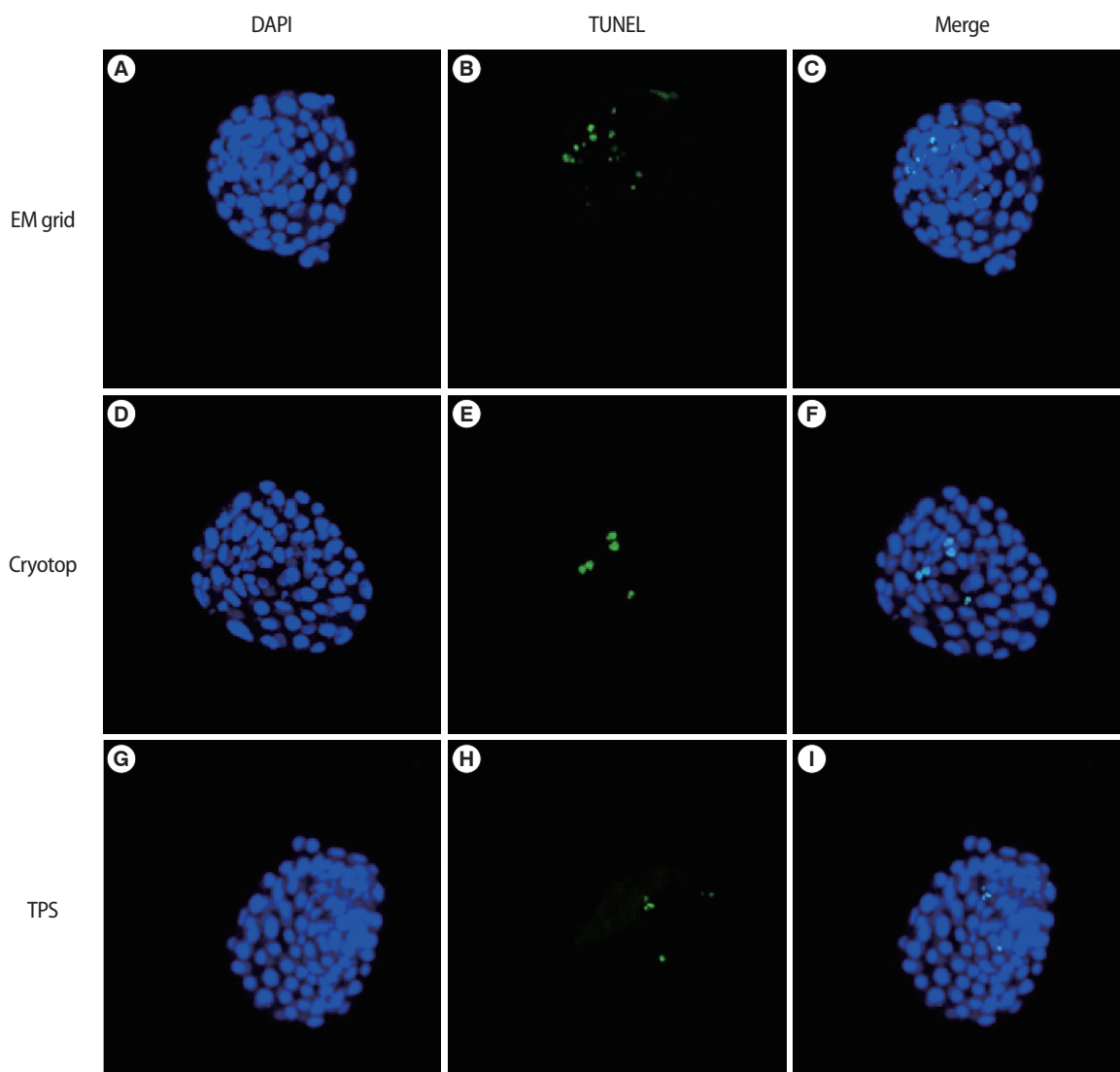
**Table 4.** Effect of vitrification containers on the developmental competence and apoptosis rate of mouse blastocysts after vitrification and warming

Group	Embryos examined	Surviving embryos	Re-expanded blastocysts <sup>a</sup>	Hatching-stage blastocysts <sup>b</sup>	No. of total cells	Apoptotic cells
EM grid	121	113 (93.4) <sup>b</sup>	91 (80.5)	99 (87.6) <sup>b</sup>	80.4 ± 8.96 <sup>b</sup>	8.32 ± 2.90 <sup>a</sup>
TPS	100	100 (100) <sup>a</sup>	92 (92.0)	100 (100) <sup>a</sup>	92.3 ± 10.84 <sup>a</sup>	3.13 ± 0.99 <sup>b</sup>
Cryotop	98	95 (96.9) <sup>a,b</sup>	88 (92.6)	90 (94.7) <sup>b</sup>	95.7 ± 10.21 <sup>a</sup>	5.05 ± 1.31 <sup>b</sup>
<i>p</i> -value		0.0266	0.5207	0.0008	0.0041	< 0.0001

Values are presented as number (%) or mean ± SD. Survived embryos, re-expanded blastocysts, and hatching blastocysts: chi-square test.

No. of total cells, No. of apoptotic cells: analysis of variance (Tukey's test); EM, electron microscopy; TPS, thin plastic strip.

<sup>a</sup>After warming, the embryos were cultured *in vitro* for 3 hours, and the re-expansion rate of the embryos was assessed, <sup>b</sup>After warming, the embryos were cultured *in vitro* for 24 hours, and the hatching rate of the embryos was assessed, <sup>a,b</sup>Values with different superscripts within columns are significant different at *p* < 0.05.



**Figure 3.** The fluorescent image patterns of total and apoptotic cells in mouse embryos. (A-C; × 400) Total cells were determined by DAPI (blue), (D-F; × 400) apoptotic cells were confirmed by TUNEL (green), and (G-I; × 400) colocalization with DAPI is indicated as blue-green. DAPI, 4', 6-diamidino-2-phenylindole; TUNEL, terminal deoxynucleotidyl transferase (TDT) mediated dUTP nick end labeling; EM, electron microscopy; TPS, thin plastic strip.



A limitation of this work was the use of vitrified-warmed mouse embryos. Monitoring of outcomes with vitrified human embryos that have been transported between clinics is imperative to fully appreciate the risks associated with new vitrification containers. Therefore, in this study, we confirmed the apoptosis rate after vitrification using different containers and at different cell stages. Apoptotic cell death occurs in preimplantation mammalian embryos due to stresses, which in turn decreases the developmental competence of mouse embryos [38,40,41]. Thus, the apoptotic pattern of mouse embryos should be considered. In this study, the total number of cells and apoptosis rates by the DAPI and TUNEL methods was observed in mouse embryos after vitrified-warming derived from cleavage and blastocyst stage embryos using EM grid, cryotop, and TPS. The total number of cells and apoptosis rate of cleavage-stage mouse embryos using the TPS container was similar to those obtained with the EM grid and cryotop. However, the cryotop and TPS groups displayed higher total cell numbers and lower apoptosis rates in vitrified-warmed blastocysts ( $p < 0.05$ ) (Table 4, Figure 3). These data indicate that the TPS method may be effective for minimized chilling damage, a short time of exposure to toxic chemicals, and elimination of fracture damage.

In conclusion, the TPS method is simple, rapid and inexpensive, and the handling and storage of vitrified embryos can be based on the existing tools and methods of vitrification. The TPS method may also be suitable for vitrification of embryos at different stages of development.

## Conflict of interest

No potential conflict of interest relevant to this article was reported.

## References

- Rall WF, Fahy GM. Ice-free cryopreservation of mouse embryos at -196 degrees C by vitrification. *Nature* 1985;313:573-5.
- Gordts S, Roziars P, Campo R, Noto V. Survival and pregnancy outcome after ultrarapid freezing of human embryos. *Fertil Steril* 1990;53:469-72.
- Martino A, Songsasen N, Leibo SP. Development into blastocysts of bovine oocytes cryopreserved by ultra-rapid cooling. *Biol Reprod* 1996;54:1059-69.
- Son WY, Yoon SH, Yoon HJ, Lee SM, Lim JH. Pregnancy outcome following transfer of human blastocysts vitrified on electron microscopy grids after induced collapse of the blastocoele. *Hum Reprod* 2003;18:137-9.
- Lee SY, Kim HJ, Park SJ, Yoon HJ, Yoon SH, Lee KH, et al. Optimization of a dilution method for human expanded blastocysts vitrified using EM grids after artificial shrinkage. *J Assist Reprod Genet* 2006;23:87-91.
- Kim TJ, Hong SW. Successful live birth from vitrified oocytes after 5 years of cryopreservation. *J Assist Reprod Genet* 2011;28:73-6.
- Vajta G, Holm P, Greve T, Callesen H. Vitrification of porcine embryos using the Open Pulled Straw (OPS) method. *Acta Vet Scand* 1997;38:349-52.
- Vajta G, Holm P, Kuwayama M, Booth PJ, Jacobsen H, Greve T, et al. Open Pulled Straw (OPS) vitrification: a new way to reduce cryoinjuries of bovine ova and embryos. *Mol Reprod Dev* 1998; 51:53-8.
- Isachenko V, Montag M, Isachenko E, Zaeva V, Krivokharchenko I, Shafei R, et al. Aseptic technology of vitrification of human pronuclear oocytes using open-pulled straws. *Hum Reprod* 2005;20: 492-6.
- Zhou C, Zhou GB, Zhu SE, Hou YP, Jin F, Zhao XM, et al. Open-pulled straw (OPS) vitrification of mouse hatched blastocysts. *Anim Biotechnol* 2007;18:45-54.
- Yan CL, Yang QE, Zhou GB, Hou YP, Zhao XM, Fan ZQ, et al. Open-pulled straw (OPS) vitrification of in vitro fertilised mouse embryos at various stages. *Acta Vet Hung* 2008;56:245-53.
- El-Gayar M, Gauly M, Holtz W. In vitro and in vivo survival of mouse blastocysts after repeated vitrification with the open pulled straw (OPS) method. *Cryo Letters* 2010;31:454-9.
- Vanderzwalmen P, Bertin G, Debauche C, Standaert V, Bollen N, van Roosendaal E, et al. Vitrification of human blastocysts with the Hemi-Straw carrier: application of assisted hatching after thawing. *Hum Reprod* 2003;18:1504-11.
- Vanderzwalmen P, Ectors F, Grobet L, Prapas Y, Panagiotidis Y, Vanderzwalmen S, et al. Aseptic vitrification of blastocysts from infertile patients, egg donors and after IVM. *Reprod Biomed Online* 2009;19:700-7.
- Lane M, Schoolcraft WB, Gardner DK. Vitrification of mouse and human blastocysts using a novel cryoloop container-less technique. *Fertil Steril* 1999;72:1073-8.
- Saki G, Dezfuly FG. Vitrification of human oocyte using cryoloop. *Iran J Reprod Med* 2005;3:19-24.
- Chen ZJ, Li Y, Hu JM, Li M. Successful clinical pregnancy of cryopreserved human oocytes after vitrification. *Zhonghua Yi Xue Za Zhi* 2006;86:2037-40.
- Desai N, Blackmon H, Szeptycki J, Goldfarb J. Cryoloop vitrification of human day 3 cleavage-stage embryos: post-vitrification development, pregnancy outcomes and live births. *Reprod Biomed Online* 2007;14:208-13.
- Raju GA, Prakash GJ, Krishna KM, Madan K. Vitrification of human early cavitating and deflated expanded blastocysts: clinical outcome of 474 cycles. *J Assist Reprod Genet* 2009;26:523-9.

20. Kuwayama M, Vajta G, Ieda S, Kato O. Comparison of open and closed methods for vitrification of human embryos and the elimination of potential contamination. *Reprod Biomed Online* 2005; 11:608-14.
21. Antinori M, Licata E, Dani G, Cerusico F, Versaci C, Antinori S. Cryotop vitrification of human oocytes results in high survival rate and healthy deliveries. *Reprod Biomed Online* 2007;14:72-9.
22. Zhang J, Cui J, Ling X, Li X, Peng Y, Guo X, et al. Vitrification of mouse embryos at 2-cell, 4-cell and 8-cell stages by cryotop method. *J Assist Reprod Genet* 2009;26:621-8.
23. Lin TK, Su JT, Lee FK, Lin YR, Lo HC. Cryotop vitrification as compared to conventional slow freezing for human embryos at the cleavage stage: survival and outcomes. *Taiwan J Obstet Gynecol* 2010;49:272-8.
24. Nakashima A, Ino N, Kusumi M, Ohgi S, Ito M, Horikawa T, et al. Optimization of a novel nylon mesh container for human embryo ultrarapid vitrification. *Fertil Steril* 2010;93:2405-10.
25. Quinn P. Vitrification of human oocytes with different tools. In: Chian RC, Quinn P, editors. *Fertility preservation*. New York: Cambridge University Press; 2010. p. 131-43.
26. Gvakharia M, Adamson GD. Implementation of an inexpensive method of vitrification and warming of human cleavage-stage embryos using cut standard straws. *Fertil Steril* 2011;95:2552-3.
27. Seki S, Mazur P. Ultra-rapid warming yields high survival of mouse oocytes cooled to -196 degrees c in dilutions of a standard vitrification solution. *PLoS One* 2012;7:e36058.
28. Mazur P, Leibo SP, Chu EH. A two-factor hypothesis of freezing injury. Evidence from Chinese hamster tissue-culture cells. *Exp Cell Res* 1972;71:345-55.
29. Quinn PJ. A lipid-phase separation model of low-temperature damage to biological membranes. *Cryobiology* 1985;22:128-46.
30. Saragusty J, Gacitua H, Rozenboim I, Arav A. Do physical forces contribute to cryodamage? *Biotechnol Bioeng* 2009;104:719-28.
31. AbdelHafez F, Xu J, Goldberg J, Desai N. Vitrification in open and closed carriers at different cell stages: assessment of embryo survival, development, DNA integrity and stability during vapor phase storage for transport. *BMC Biotechnol* 2011;11:29.
32. Kader A, Choi A, Sharma RK, Falcone T, Agarwal A. Effect of varying equilibration time in a two-step vitrification method on the post-warming DNA integrity of mouse blastocysts. *Fertil Steril* 2010;93:2640-5.
33. Chen SU, Lien YR, Cheng YY, Chen HF, Ho HN, Yang YS. Vitrification of mouse oocytes using closed pulled straws (CPS) achieves a high survival and preserves good patterns of meiotic spindles, compared with conventional straws, open pulled straws (OPS) and grids. *Hum Reprod* 2001;16:2350-6.
34. Kim SH, Ku SY, Sung KC, Kang MJ, Kim SA, Kim HS, et al. Simplified EM grid vitrification is a convenient and efficient method for mouse mature oocyte cryopreservation. *Yonsei Med J* 2006;47:399-404.
35. Ling XF, Zhang JQ, Cao SR, Chen J, Peng Y, Guo X, et al. Effect of cryotop vitrification on preimplantation developmental competence of murine morula and blastocyst stage embryos. *Reprod Biomed Online* 2009;19:708-13.
36. Valbuena D, Póo ME, Aguilar-Gallardo C, Martinez S, Cobo AC, Pellicer A, et al. Comparison of Cryotip vs. Cryotop for mouse and human blastomere vitrification. *Fertil Steril* 2012;97:209-17.
37. Kuwayama M, Vajta G, Kato O, Leibo SP. Highly efficient vitrification method for cryopreservation of human oocytes. *Reprod Biomed Online* 2005;11:300-8.
38. Behr B, Gebhardt J, Lyon J, Milki AA. Factors relating to a successful cryopreserved blastocyst transfer program. *Fertil Steril* 2002; 77:697-9.
39. Bielanski A. A review of the risk of contamination of semen and embryos during cryopreservation and measures to limit cross-contamination during banking to prevent disease transmission in ET practices. *Theriogenology* 2012;77:467-82.
40. Pomar FJ, Teerds KJ, Kidson A, Colenbrander B, Tharasanit T, Aguilar B, et al. Differences in the incidence of apoptosis between in vivo and in vitro produced blastocysts of farm animal species: a comparative study. *Theriogenology* 2005;63:2254-68.
41. Kader A, Agarwal A, Abdelrazik H, Sharma RK, Ahmady A, Falcone T. Evaluation of post-thaw DNA integrity of mouse blastocysts after ultrarapid and slow freezing. *Fertil Steril* 2009;91:2087-94.