

Received: 2020.12.07

Accepted: 2021.02.27

Available online: 2021.03.09

Published: 2021.06.08

# Visceral-to-Subcutaneous Fat Ratio Is a Potential Predictor of Postoperative Complications in Colorectal Cancer

**Authors' Contribution:**

Study Design A  
Data Collection B  
Statistical Analysis C  
Data Interpretation D  
Manuscript Preparation E  
Literature Search F  
Funds Collection G

BCDEF **An-Qi He\***  
BCDEF **Chun-Qiang Li\***  
B **Qi Zhang**  
D **Tong Liu**  
F **Jian Liu**  
A **Gang Liu**

Department of General Surgery, Tianjin Medical University General Hospital, Tianjin, P.R. China

\* An-Qi He and Chun-Qiang Li contributed equally to this work and should be considered co-first authors

**Corresponding Author:** Gang Liu, e-mail: lg1059@tmu.edu.cn

**Source of support:** Departmental sources

**Background:** Colorectal cancer (CRC) is one of the most common malignant tumors. Surgery is the primary treatment for CRC. Recent studies have shown that visceral-to-subcutaneous fat ratio (VSR) may be a potential indicator of risk. The aim of the present study was to determine whether VSR is a suitable predictor of the impact of postoperative complications in CRC.

**Material/Methods:** Clinical data from 129 patients were analyzed retrospectively. All patients underwent laparoscopic surgery for CRC. Preoperative imaging was used to quantify VSR. The primary outcome was 30-day postoperative complications. Multivariate logistic regression was used to determine the association between obesity indexes and postoperative complications.

**Results:** There were 129 patients who underwent primary resections of colorectal cancer. At 30 days after surgery, postoperative complications had occurred in 33 (25.6%) patients. VSR was significantly associated with postoperative complications in multivariate analysis ( $P=0.032$ , OR 6.103, 95% CI 1.173-31.748). In ROC analysis, VSR was a potential predictor of complications (AUC 0.650). A cutoff value of  $VSR \geq 0.707$  was associated with 60% sensitivity and 29% specificity for postoperative complications. Patients with  $VSR \geq 0.707$  had 41.7% risk of morbidity, whereas those with  $<0.707$  had 16.0% risk ( $P=0.001$ ).

**Conclusions:** Our study shows that VSR is superior to VFA for prediction of the risk of complications following CRC laparoscopic surgery. We have also identified the optimal cutoff values for the use of VSR for this purpose. Measurement of VSR and identifying patients with increased risk of postoperative complications facilitate making perioperative decisions.

**Keywords:** **Colorectal Neoplasms • Colorectal Surgery • Postoperative Complications**

**Full-text PDF:** <https://www.medscimonit.com/abstract/index/idArt/930329>

 2088

 3

 4

 16



## Background

Colorectal cancer (CRC) is one of the most common malignant tumors worldwide and is increasing in prevalence. Surgery is the primary treatment for CRC. However, complications of surgery may adversely influence oncologic outcomes [1-3].

Epidemiologic studies have shown a relationship between the higher incidence of CRC and that of obesity, especially in men, who demonstrate a 30-70% higher risk [4]. Obesity, as defined by BMI  $\geq 30$  kg/m<sup>2</sup> was reported to be associated with an increased risk of postoperative complications [5-7]. Abdominal obesity as defined by a high visceral fat area (VFA) has been shown to be a more reliable predictor factor of poor abdominal surgery outcome than is BMI [8]. In addition, recent studies conducted in several countries have suggested that visceral-to-subcutaneous fat ratio (VSR) is an independent predictor of cardiovascular disease events and metabolic syndrome, and that this might be a more sensitive predictor than VFA [9]. However, although the relationship with VFA is well characterized, that with VSR is not.

Other studies regard visceral obesity as a dichotomous variable based on a given VFA cutoff value. Application of a given cutoff values may introduce interpretation bias into previously reported studies. To avoid this bias, it may be prudent to treat VFA and related variables as continuous variables rather than categorical variables [8].

Abdominal obesity has become a substantial public health problem and its incidence is increasing at a significantly higher rate than that of non-specific overweight/obesity. Because of this trend, the effect of abdominal obesity on the outcomes of CRC surgery requires further study. Therefore, we aimed to identify the optimal anthropometric measure for the precise estimation of the impact of abdominal obesity on the outcomes of CRC surgery, using a retrospective study.

## Material and Methods

### Study Design and Patients

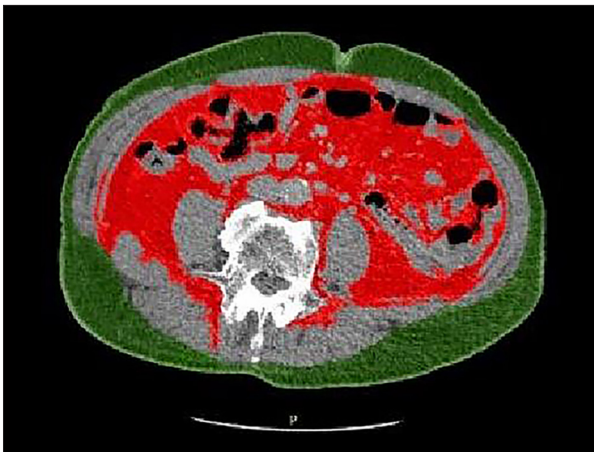
This study was reviewed and approved by the Ethics Committee of Tianjin Medical University General Hospital with waiver of informed consent. Consecutive patients with CRC who were admitted to the Department of General Surgery at Tianjin Medical University General Hospital between July 2015 and September 2017 were considered for inclusion in the study. The inclusion criteria were: (1) a definitive diagnosis of CRC made before surgery and planned radical laparoscopic resection; (2) no hepatic, pulmonary, peritoneal, or other distant metastases had been identified in preoperative examinations;

(3) a postoperative pathologic diagnosis had been made after an R0 resection; and (4) the patient did not receive neoadjuvant therapy and ostomy. The exclusion criteria were: (1) the patient's physical condition was too poor to tolerate general anesthesia, defined as American Society of Anesthesiologists (ASA) physical fitness grade  $>III$ ; (2) a planned laparotomy; and (3) a requirement for palliative surgery, because of intraoperative findings of peritoneal dissemination, distant metastasis, and/or extensive adhesion.

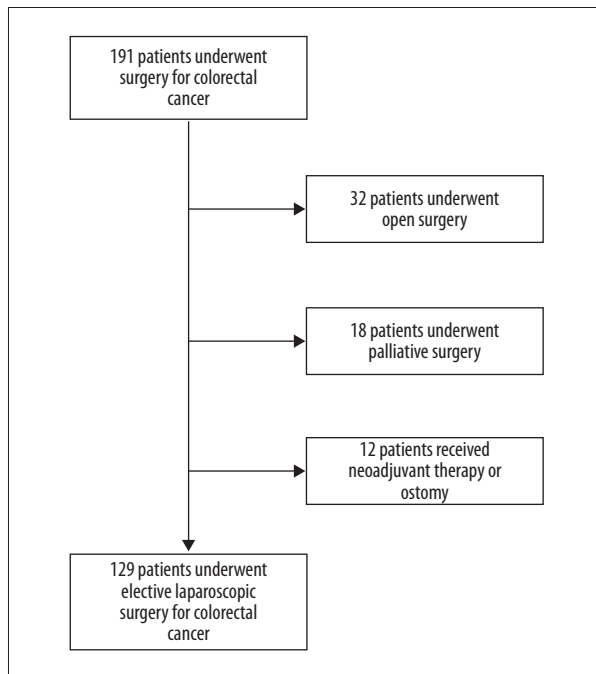
The data collected included preoperative demographic characteristics, intraoperative parameters, and postoperative conditions. The preoperative demographic characteristics were sex, age, height, body mass, and the presence of concomitant diseases (hypertension, diabetes mellitus, and/or coronary heart disease). In addition, hemoglobin and albumin concentrations were recorded. Height and body mass were measured just before surgery, and samples were collected for hemoglobin and albumin measurement on the morning of surgery. The intraoperative parameters were surgical time, volume of blood loss, and the number of lymph nodes that were dissected. The postoperative conditions were pathology and pathologic stage, as well as complications that developed within 1 month of surgery (wound infection, pneumonia, intra-abdominal infection, anastomotic leakage, and/or ileus).

### Anthropometric Measurement

Recently, there has been a great deal of interest in using computed tomography (CT) to measure abdominal adipose tissue [10,11]. Preoperative CT and specific scanning software were used to quantify the VFA and subcutaneous fat area (SFA) of each patient. During CT examination, the patients were supine and a sequential scan was performed from the right superior border of the diaphragm to the symphysis pubis. A single cross-sectional image was acquired at the level of the L4-L5 intervertebral space, and this was analyzed at a workstation using GE AW VolumeShare 5 software. The CT attenuation value was set as -30--190 HU for the identification of the total fat area. A region of interest (ROI) was outlined from the medial border of the rectus abdominis to the lateral margin of the psoas maximus and the medial border of the obliquus internus abdominis. The area within the ROI was calculated as the VFA, and the area of fat beyond the ROI was calculated as the subcutaneous fat area (SFA) (**Figure 1**). The VSR was calculated by dividing the VFA by the SFA. An experienced radiologist reviewed all of the images and calculated the VFA and SFA values in blinded fashion. According to the Chinese Overweight/Obesity Medical Nutrition Treatment Expert Consensus, BMI, which is the most useful population-level measure of overweight and obesity, was set at 28 kg/m<sup>2</sup> for obesity in all adults.



**Figure 1.** A representative image taken at the level of the L4/L5 intervertebral space, showing computer-derived SFA (green) and VFA (red).



**Figure 2.** Flowchart of exclusion criteria to arrive at final cohort.

### Statistical Analysis

Statistical Product and Service Solutions (SPSS) software v.22.0 (IBM Inc., Armonk, NY, USA) was used for data processing. Anthropometric variables were evaluated as continuous variables. Continuous variables are expressed as the median (interquartile range IQR) and evaluated by Mann-Whitney U test or ANOVA; Spearman's rank or Kendall's tau-b correlation coefficient were used to evaluate ordinal variables. As appropriate, Pearson's chi-squared, or Fisher's exact test were used to evaluate categorical variables. *P* values <0.05 were considered to be statistically significant. Multivariate logistic regression

**Table 1.** Patient baseline characteristics.

	Number of cases (total n=129)
Median age (years)	66 (60.0-73.5)*
Female sex	59 (45.7)
Median body mass index (kg/m <sup>2</sup> )	23.8 (21.7-26.0)*
Medical comorbidities	
Hypertension	49 (38.0)
Diabetes mellitus	21 (16.3)
Coronary artery disease/ myocardial infarction	16 (12.4)
Anemia (Hb <120g/L)	60 (46.5)
Hypoalbuminemia(Alb <30 g/L)	64 (49.6)
AJCC staging	
I	18 (14.0)
II	53 (41.1)
III	58 (44.9)
Site of primary lesion	
Right	45 (34.9)
Transverse	5 (3.9)
Left	14 (10.9)
Sigmoid	17 (13.1)
Rectum	48 (37.2)

Values presented are count (percentage) except \* median (interquartile range, IQR). AJCC – American Joint Committee on Cancer.

was used to determine the association between body fat distribution variables and postoperative complications. Receiver operating characteristic (ROC) curve analysis was performed to determine the optimal cutoff values for VSR and the area under curve (AUC) was used to quantify the accuracy of each anthropometric measure.

## Results

### Demographics and Clinical Features

The records of a total of 191 consecutive patients were considered, and 129 of them fulfilled the inclusion and exclusion criteria for the study (Figure 2). The characteristics of the enrolled patients are given in Table 1. The median age of patients was 66 years old (IQR, 60-73.5 years), and 59 (45.7%)

**Table 2.** Degree of collinearity between patient baseline characteristics and CT-derived anthropometries.

	VFA	SFA	VSR
Age (years)*	<0.001	0.050	0.063
Female sex**	0.447	<0.001	<0.001
Body mass index*	<0.001	<0.001	0.514
Medical comorbidities***			
Hypertension	0.003	0.037	0.231
Diabetes mellitus	0.089	0.156	0.457
Coronary artery disease/myocardial infarction	0.716	0.072	0.246
Anemia**	0.947	0.759	0.876
Hypoalbuminemia**	0.743	0.370	0.845
AJCC staging***	0.338	0.769	0.477
Site of primary lesion****	0.831	0.970	0.578
Surgical time*	0.004	0.176	0.025
Volume of blood loss*	0.714	0.506	0.193
Number of lymph nodes*	0.080	0.176	0.068

VFA – visceral fat area; SFA – subcutaneous fat area; VSR – visceral-to-subcutaneous fat ratio. \* Pearson product-moment correlation; \*\* Mann-Whitney U test with 2 independent samples; \*\*\* Kendall's tau-b test; \*\*\*\* One-way ANOVA.

patients were female. The median BMI was 23.8 kg/m<sup>2</sup> (IQR, 21.7-26.0kg/m<sup>2</sup>). 60 (46.5%) and 64 (49.6%) patients were diagnosed with anemia (Hb <120g/L) and hypoalbuminemia (Alb <30 g/L), respectively. The cancers AJCC staging was: stage I n=18 (14.0%); stage II n=53 (41.1%); stage III n=58 (44.9%). There were 81 (62.8%) patients diagnosed with colon cancer and who underwent laparoscopic elective colon resection. There were 48 (37.2%) patients diagnosed with rectal cancer and all of these underwent laparoscopic rectal anterior resection.

### Anthropometric Results

The median VFA was 121.7 cm<sup>2</sup> (IQR, 83.7-159.6 cm<sup>2</sup>), median SFA 194.8 cm<sup>2</sup> (IQR, 149.8-254.8 cm<sup>2</sup>), median VSR 0.63 (IQR, 0.48-0.78 cm<sup>2</sup>). There was a significant correlation between BMI and VFA, SFA ( $P<0.001$ ). Surgical time was significantly correlated with VFA and VSR ( $p=0.004$ ;  $p=0.025$ ). Collinearity of patient characteristics and obesity indexes are shown in **Table 2**.

### Postoperative Complications

Thirty-three patients (25.6%) developed 30-day postoperative complications. Complications included wound infection (n=18), intra-abdominal infection (n=8), pulmonary infection (n=5), intestinal obstruction (n=5), and anastomotic leakage (n=8). Regression analysis (**Table 3**) showed that higher VFA and VSR and longer surgical time were associated with an increased risk of postoperative complications ( $P=0.016$ ,  $P=0.006$ ,

$P=0.002$ , respectively). In multivariable analysis, VSR remained associated with increased risk of postoperative complications ( $P=0.032$ , OR 6.103, 95% CI 1.173-31.748). ROC analysis was used to evaluate the accuracy of VSR in predicting postoperative complications. The area under the curve (AUC) was 0.650. The cutoff value is  $VSR \geq 0.707$ , which was associated with 60% sensitivity and 29% specificity for 30-day postoperative complications (**Figure 3**). In an unadjusted analysis, patients with  $VSR \geq 0.707$  had 41.7% risk of incidence, whereas those with  $VSR < 0.707$  had 16.0% risk ( $P=0.001$ ) (**Figure 4**).

### Discussion

The usefulness of a number of anthropometric parameters for the prediction of the surgical outcomes of laparoscopic CRC surgery has been assessed in several countries. It is reasonable to suppose that obesity influences the success of abdominal surgery, and indeed almost all of the previous reports have concluded that VFA is a more sensitive index than BMI and other parameters. At present, the mean annual increase in the incidence of central obesity in China is 1.1%, which is significantly higher than that of non-specific overweight/obesity. Furthermore, the incidence of and mortality associated with CRC also shows clear upward trends. However, previous studies that have evaluated the usefulness of VFA or VSR for the prediction of the success of abdominal surgery in China have almost always used the Western cutoff values, despite

**Table 3.** Univariable and multivariable analysis of 30-day postoperative complications.

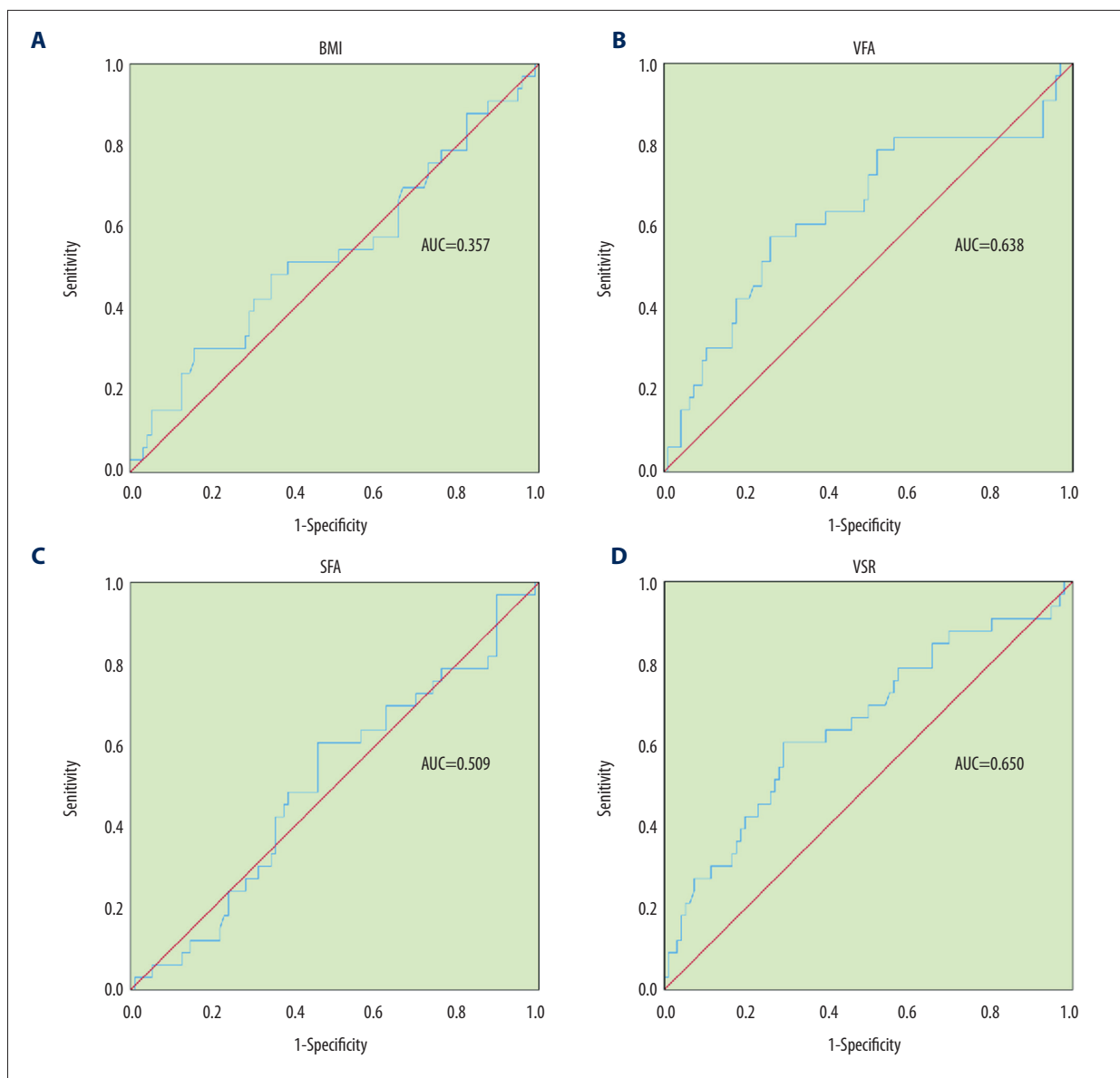
	30-day postoperative complications	No 30-day postoperative complications	Univariable p***	Multivariable analysis	
				Odds ratio**	P
No. (%)	33 (25.6)	96 (74.4)			
Mean age (years)	64.4 (11.7)	66.0 (10.5)	0.45		
Female sex	15	44	0.57		
<b>Medical comorbidities</b>					
Hypertension	13	36	0.50		
Diabetes mellitus	7	14	0.26		
Coronary artery disease/myocardial infarction	3	13	0.37		
Anemia(Hb <120 g/L)	15	45	0.52		
Hypoalbuminemia(Alb <30 g/L)	14	50	0.23		
AJCC staging			0.54		
I	5	13			
II	13	40			
III	15	43			
Site of primary lesion			0.74		
Right	11	32			
Transverse	2	4			
Left	2	7			
Sigmoid	8	15			
Rectum	10	38			
Surgical time (h)	5.0 (0.94)	4.4 (0.96)	0.002	1.793 (1.141-2.817)	0.011
Volume of blood loss (ml)	123.3 (132.8)	102.8 (137.5)	0.45		
Number of lymph nodes	14.0 (3.2)	14.5 (3.4)	0.50		
Body mass index	24.4 (3.9)	23.8 (3.4)	0.43		
VFA	150.4 (64.1)	122.7 (53.3)	0.016		
SFA	206.4 (77.5)	208.0 (84.0)	0.92		
VSR	0.760 (0.291)	0.621 (0.227)	0.006	6.103 (1.173-31.748)	0.032

\* Values in parentheses are standard deviations; \*\* Values in parentheses are 95% CI; \*\*\* Fisher's exact test.

the differences between East and West with regard to physical fitness, and the consequent mis-grouping of participants may have led to inappropriate findings.

Identifying patients with increased risk of postoperative complications facilitates making perioperative decisions. In contrast to ASA class, comorbidity, and other factors, obesity may influence the

outcomes through its impact on the difficulty of surgery and the physiological system effect [6,7]. Numerous studies have shown that it does not reflect the extent of adipose tissue deposition around the viscera or the risk of postoperative complications, although BMI is widely used for the clinical assessment of obesity. Currently, VFA seems to be the most useful index for the assessment of surgical risk associated with obesity. Kuritzkes et al [8]



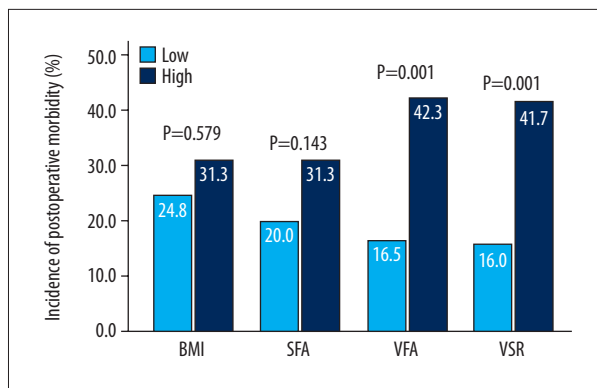
**Figure 3.** (A-D) ROC curves showing the accuracy of anthropometric measurement in predicting postoperative complications.

concluded that VFA, rather than BMI, predicts the incidence of postoperative complications of colon cancer elective surgery. Furthermore, a single-center study conducted in Japan demonstrated that high VFA is an independent risk factor for incisional hernia [12]. However, visceral obesity can also be assessed using other anthropometric measures. Chen et al [13] quantified VFA and the total abdominal muscle area, alongside muscle strength and physical performance, and showed that a combination of visceral obesity and sarcopenia is associated with a higher incidence of postoperative complications, longer hospital stays, and higher hospitalization costs after surgery for CRC.

Some researchers have suggested that perirenal fat area is a risk factor for perioperative and short-term postoperative

complications in elective colon cancer surgery [14]. Other anthropometric measures, such as body surface area, mesorectal fat ratio, pelvic fat area, pelvic fat ratio, and VFA-to-muscle index, have also been discussed. However, which is the most useful anthropometric measure remains a matter of controversy. Recent studies have shown that VSR may be a more accurate predictor of cardiovascular and metabolic disease incidence than VFA, but to date there have been few assessments of the use of VSR for the prediction of complications associated with radical laparoscopic colorectal surgery. In the present study, we have compared BMI, VFA, and VSR, and found that VSR is superior to the other indexes, including VFA, for the prediction of postoperative complications. The explanation for this may be that VSR most closely reflects adipose tissue





**Figure 4.** Comparison of anthropometric measurement in predicting postoperative complication. \* Unadjusted P values, Pearson chi-squared test.

distribution, and VSR increases the difficulty of surgery and thus leads to an increased incidence of complications. Many previous studies have shown that visceral fat mass is strongly associated with the risks of metabolic and cardiovascular disease, whereas subcutaneous fat is relatively benign [15]. High VSR may imply both greater visceral adiposity and less subcutaneous adiposity; therefore, the risk of postoperative complications is higher than with high VFA alone.

In the present study, we aimed to demonstrate that VSR is a suitable measurement for the prediction of the risk of postoperative complications following laparoscopic colorectal cancer, and to identify the most appropriate cutoff value for VSR. We found that as VSR increased, the incidence of postoperative complications also increased. The VSR values were associated

with larger AUC areas than were VFA and BMI values. In addition, we have shown, using the ROC curves, that the appropriate cutoff value of VSR for the prediction of the risk of postoperative complications is 0.707.

There were some limitations to the present study. First, there were few participants, and the number of patients with colon cancer and rectal cancer was significantly different. Second, this was a retrospective case study and single-center study. Patients with missing medical records were excluded and the difficulty of surgery varies with the location of the tumor, which may have affected the results to a certain extent. For example, the complication rate of colon cancer (23/81) was higher than that of rectal cancer (10/48). However, we believe that the outcomes are meaningful. In recent years, a study [16] concluded that VSR is the optimal obesity index for predicting stage I-III middle and low rectal cancer recurrence. At present, there is still a lack of sufficient data to prove the relationship. Therefore, multicenter studies with long-term follow-up are needed.

## Conclusions

VSR is a potential predictor of postoperative complications in laparoscopic surgery of CRC. Measurement of VSR and identifying patients with increased risk of postoperative complications facilitate making perioperative decisions.

## Conflicts of Interest

None.

## References:

- Hendren S, Birkmeyer JD, Yin H, et al. Surgical complications are associated with omission of chemotherapy for stage III colorectal cancer. *Dis Colon Rectum*. 2010;53:1587-93
- Merkow RP, Bentrem DJ, Mulcahy MF, et al. Effect of postoperative complications on adjuvant chemotherapy use for stage III colon cancer. *Ann Surg*. 2013;258(6):847-53
- Eberhardt JM, Kiran RP, Lavery IC. The impact of anastomotic leak and intra-abdominal abscess on cancer-related outcomes after resection for colorectal cancer: A case control study. *Dis Colon Rectum*. 2009;52(3):380-86
- Bardou M, Barkun AN, Martel M. Obesity and colorectal cancer. *Gut*. 2013;62(6):933-47
- Bickenbach KA, Denton B, Gonen M, et al. Impact of obesity on perioperative complications and long-term survival of patients with gastric cancer. *Ann Surg Oncol*. 2013;20(3):780-87
- Aytac E, Lavery IC, Kalady MF, et al. Impact of obesity on operation performed, complications, and long-term outcomes in terms of restoration of intestinal continuity for patients with mid and low rectal cancer. *Dis Colon Rectum*. 2013;56(6):689-97
- Gendall KA, Raniga S, Kennedy R, et al. The impact of obesity on outcome after major colorectal surgery. *Dis Colon Rectum*. 2007;50(12):2223-37
- Kuritzkes BA, Pappou EP, Kiran RP, et al. Visceral fat area, not body mass index, predicts postoperative 30-day morbidity in patients undergoing colon resection for cancer. *Int J Colorectal Dis*. 2018;33(8):1019-28
- Kwon S, Han AL. The correlation between the ratio of visceral fat area to subcutaneous fat area on computed tomography and lipid accumulation product as indexes of cardiovascular risk. *J Obes Metab Syndr*. 2019;28(3):186-93
- Graffy PM, Pickhardt PJ. Quantification of hepatic and visceral fat by CT and MR imaging: Relevance to the obesity epidemic, metabolic syndrome and NAFLD. *Br J Radiol*. 2016;89(1062):20151024
- Shuster A, Patlas M, Pinthus JH, et al. The clinical importance of visceral adiposity: A critical review of methods for visceral adipose tissue analysis. *Br J Radiol*. 2012;85(1009):1-10
- Yamamoto M, Takakura Y, Ikeda S, et al. Visceral obesity is a significant risk factor for incisional hernia after laparoscopic colorectal surgery: A single-center review. *Asian J Endosc Surg*. 2018;11(4):373-77
- Chen WZ, Chen XD, Ma LL, et al. Impact of visceral obesity and sarcopenia on short-term outcomes after colorectal cancer surgery. *Dig Dis Sci*. 2018;63(6):1620-30
- der Hagopian O, Dahlberg M, Heinius G, et al. Perirenal fat surface area as a risk factor for perioperative difficulties and 30-day postoperative complications in elective colon cancer surgery. *Colorectal Dis*. 2018;20(12):1078-87
- Chen B, Zhang Y, Zhao S, et al. The impact of general/visceral obesity on completion of mesorectum and perioperative outcomes of laparoscopic TME for rectal cancer: A STARD-compliant article. *Medicine (Baltimore)*. 2016;95(36):e4462
- Lee KH, Kang BK, Ahn BK. Higher visceral fat area/subcutaneous fat area ratio measured by computed tomography is associated with recurrence and poor survival in patients with mid and low rectal cancers. *Int J Colorectal Dis*. 2018;33(9):1303-7