



Since January 2020 Elsevier has created a COVID-19 resource centre with free information in English and Mandarin on the novel coronavirus COVID-19. The COVID-19 resource centre is hosted on Elsevier Connect, the company's public news and information website.

Elsevier hereby grants permission to make all its COVID-19-related research that is available on the COVID-19 resource centre - including this research content - immediately available in PubMed Central and other publicly funded repositories, such as the WHO COVID database with rights for unrestricted research re-use and analyses in any form or by any means with acknowledgement of the original source. These permissions are granted for free by Elsevier for as long as the COVID-19 resource centre remains active.



Systematic review

Predictors of mortality in patients with COVID-19—a systematic review

Esmaeil Mehraeen^a, Amirali Karimi^b, Alireza Barzegary^c, Farzin Vahedi^b, Amir Masoud Afsahi^d, Omid Dadras^e, Banafsheh Moradmand-Badie^f, Seyed Ahmad Seyed Alinaghi^{g,*}, Shayesteh Jahanfar^h

^a Department of Health Information Technology, Khalkhal University of Medical Sciences, Khalkhal, Iran

^b School of medicine, Tehran University of Medical Sciences, Tehran, Iran

^c School of medicine, Islamic Azad University, Tehran, Iran

^d Department of Radiology, School of Medicine, University of California, San Diego (UCSD), CA, United States

^e Department of Global Health and Socioepidemiology, Graduate School of Medicine, Kyoto University, Kyoto, Japan

^f Black Dog Institute, University of New South Wales, Sydney, Australia

^g Iranian Research Center for HIV/AIDS, Iranian Institute for Reduction of High Risk Behaviors, Tehran University of Medical Sciences, Tehran, Iran

^h School of Public Health, Central Michigan University, Mount Pleasant, MI, 48859, United States



ARTICLE INFO

Keywords:

COVID-19

Modeling

Mortality

Risk factors

Predictors

Systematic review

ABSTRACT

Introduction: In the current COVID-19 pandemic, disease diagnosis is essential for optimal management and timely isolation of infected cases in order to prevent further spread. The aim of this study was to systematically review the assessment of risk and model the predictors of mortality in COVID-19 patients.

Methods: A systematic search was conducted of PubMed, Scopus, Embase, Google Scholar, and Web of Science databases. Variables associated with hospital mortality using bivariate analysis were included as potential independent predictors associated with mortality at the $p < 0.05$ levels.

Results: We included 114 studies accounting for 310,494 patients from various parts of the world. For the purpose of this analysis, we set a cutoff point of 10% for the mortality percentages. High mortality rates were defined as higher than 10% of confirmed positive cases and were given a score of two, while low mortality (<10%) was assigned the score of one. We then analyzed the associations between 72 variables and the observed mortality rates. These variables included a large range of related variables such as demographics, signs and symptoms and related morbidities, vital signs, laboratory findings, imaging studies, underlying diseases, and the status of countries' income, based on the United Nation's classifications.

Conclusion: Findings suggest that older age, hypertension, and diabetes mellitus conferred a significant increased risk of mortality among patients with COVID-19. In the multivariate analysis, only diabetes mellitus demonstrated an independent relationship with increased mortality. Further studies are needed to ascertain the relationship between possible risk factors with COVID-19 mortality.

1. Introduction

Coronavirus Disease 2019 (COVID-19) attracted worldwide attention as an international public health emergency as the first pandemic caused by a coronavirus [1,2]. The global number of cases and deaths has reached almost 11,000,000 and 404,396 [3], imposing an unavoidable burden and pressure on the healthcare systems in all countries as well as their economies [4–6]. This inflicted pressure requires careful strategies as well as their implementation. Actions should be guided by scientific facts to minimize the imposed harms, and this has

created an urgent need to examine studies and model outcomes [7].

Miscellaneous COVID-19 mortality rates have been reported as determining an accurate mortality rate is still a challenge and might not be achievable [8]. Mortality rates show an increase in older populations having underlying diseases [9,10]. Characteristic signs and symptoms raise clinical suspicions and are vital for detecting an infected individual [11,12]. In the current pandemic settings, diagnosing the disease is essential for providing the best management to the infected people and avoiding further spreading the disease to others through timely isolation [13,14]. All this outlines the vast importance of

* Corresponding author.

E-mail addresses: es.mehraeen@gmail.com (E. Mehraeen), aakarimi@student.tums.ac.ir (A. Karimi), barzegaryalireza@gmail.com (A. Barzegary), Farzinvahedi9@gmail.com (F. Vahedi), amir.masoud.afsahi@gmail.com (A.M. Afsahi), omiddadras@yahoo.com (O. Dadras), b.moradmand_badie@blackdog.org.au (B. Moradmand-Badie), s_a_alinaghi@yahoo.com (S.A. Seyed Alinaghi), jahan2s@cmich.edu (S. Jahanfar).

<https://doi.org/10.1016/j.eujim.2020.101226>

Received 29 July 2020; Received in revised form 12 October 2020; Accepted 13 October 2020

1876-3820/ © 2020 Elsevier GmbH. All rights reserved.

understanding signs and symptoms and their role in the disease's pathogenesis and clinical manifestations. Estimating the patterns of signs, symptoms, comorbidities, and other variables, and their association with mortality rates might be the key to the management of COVID-19. Understanding these issues helps us to provide adequate and in-time personalized care based on individual's conditions. This article aimed to provide evidence-based modeling of COVID-19 by addressing variables that might be related to an alteration in Severe Acute Respiratory Syndrome- Coronavirus-2 (SARS-CoV-2) mortality rates. Variables were divided into six major categories: demographics, signs and symptoms and related morbidities, laboratory findings and vital signs, imaging studies, underlying conditions, and countries' income. The focus was on increasing knowledge about the disease for better prevention, diagnosis, and treatment.

2. Methods

This systematic review conducted in 2020 aimed to provide a risk analysis and model predictors of mortality in COVID-19 patients.

2.1. Data sources

This systematic review was conducted using PubMed, Scopus, Embase, Google Scholar, and Web of Science databases between January 1, 2020, and June 27, 2020. The literature search was done using the keywords in combination with the following search strategy:

- A "Coronavirus OR COVID-19 OR SARS-CoV-2 OR Novel Coronavirus OR 2019-nCoV" [Title/Abstract]
- B "Clinical characteristics OR clinical feature OR clinical manifestation" [Title/Abstract]
- C "Death OR died OR fatal OR mortality OR deceased OR non survivor OR non survival" [All fields]
- D "Recovered OR discharged OR alive OR survivor OR survival" [All fields]
- E [A] AND [B] AND [C] AND [D]

2.2. Study selection

For study selection, we followed the PRISMA guidelines (Fig. 1). The selection of the studies was performed by assessing relevance by titles and abstracts by three independent investigators. The full texts were reviewed for the eligibility criteria. The English-written peer-reviewed original papers published from January 1, 2020, to June 27, were included. The exclusion criteria were as follows:

- Different types of studies, such as ongoing protocols, abstracts, reports, and letters to the editor.
- No access to the full-text document.
- Duplicated results in databases.
- Papers addressing non-human studies, or discussing COVID-19 in general, without reference to the disease's mortality.

The title and abstract of each manuscript were evaluated, and the most relevant manuscripts were selected based on the previously mentioned inclusion and exclusion criteria. Two independent investigators conducted the screening, and disagreement was resolved through discussion.

2.3. Data extraction

We used the data extraction forms, including information on the authors, year of publication, country, sample size, age, gender, clinical symptoms (e.g., fever, chills). This information was obtained independently by two investigators, and disagreement was resolved through discussion.

2.4. Quality assessment

To ensure the quality assessment of selected articles, a checklist (Table 1) with 15 items was developed based on the relevant studies [15–17]. The quality of articles was evaluated by the scoring of checklist items and estimated the mean score and rated on a three-point scale: low quality (0–5), medium quality (6–10), and high quality (11–15). The full text of selected articles was then thoroughly studied to extract the essential findings. The qualified full-text articles were included, and their results were discussed to make the final selection. After reading the full text of all eligible papers, the researchers decided to include/exclude each study.

2.5. Data synthesis

A quantitative synthesis of the identified studies was carried out according to the search strategy and the identified characteristics; these were later analyzed according to frequencies (n) to facilitate data interpretation. We used SPSS software (version 26) for data analysis and data extraction. The data was analyzed and categorized using the following variables listed in Table 2. These factors were extracted after thorough and careful reading of the articles to include them as efficiently as possible.

Variables associated with hospital mortality in the bivariate analysis were included as potential independent predictors at the $p < 0.05$ levels. The final model retained those variables associated with the mortality at the $p < 0.05$ level.

3. Results

In this study, using the applied systematic search strategies, 751 sources were identified and retrieved. After an initial review of retrieved articles, 148 duplicates were removed, and the title and abstract of the remaining 603 articles were reviewed. Applying the selection criteria, 489 articles were excluded, and only 114 articles met inclusion criteria and were included in the final review (Fig. 1). The mean quality score of the selected articles was 13 (=range: 11 to 15), indicating the high quality of these articles.

We included 114 studies accounting for 310,494 patients from various parts of the world. For this analysis, we set a cutoff point of 10% for the mortality percentages. High mortality rates were defined as higher than 10% of confirmed positive cases and were given a score of two, while low mortality percentage (<10%) was assigned to the score of one. We then analyzed the associations between 72 variables and the observed mortality rates. These variables included a wide range of related conditions such as demographics, signs and symptoms and related morbidities, vital signs, laboratory findings, imaging studies, underlying diseases, and the status of countries' income based on the United Nation's classifications. To categorize countries based on their incomes, we used the United Nation's classification of least developed countries, developing countries, and developed countries and gave them one, two, and three points, respectively. For instance, China, the country reporting the first cases of COVID-19, scores two in our classification. Iran also scored two in this classification. USA and Western European countries were among those achieving a score of three.

3.1. The most common signs and symptoms

The 10 most common observed signs and symptoms with the highest mean percentage were fever (68.48 (SD: 23.40)), cough (58.37 (SD: 18.16)), olfactory dysfunction (56.96 (SD: 26.56)), postnasal drip (49.18 (SD: 1.68)), gustatory dysfunction (46.96 (SD: 24.77)), face pain or heaviness (39.69 (SD: 16.19)), dyspnea (37.40 (SD: 25.46)), malaise (36.84 (SD: 22.72)), arthralgia (33.17 (SD: 22.73)), and nasal obstruction (32.09 (SD: 22.77)). Detailed information is illustrated in Table 3.

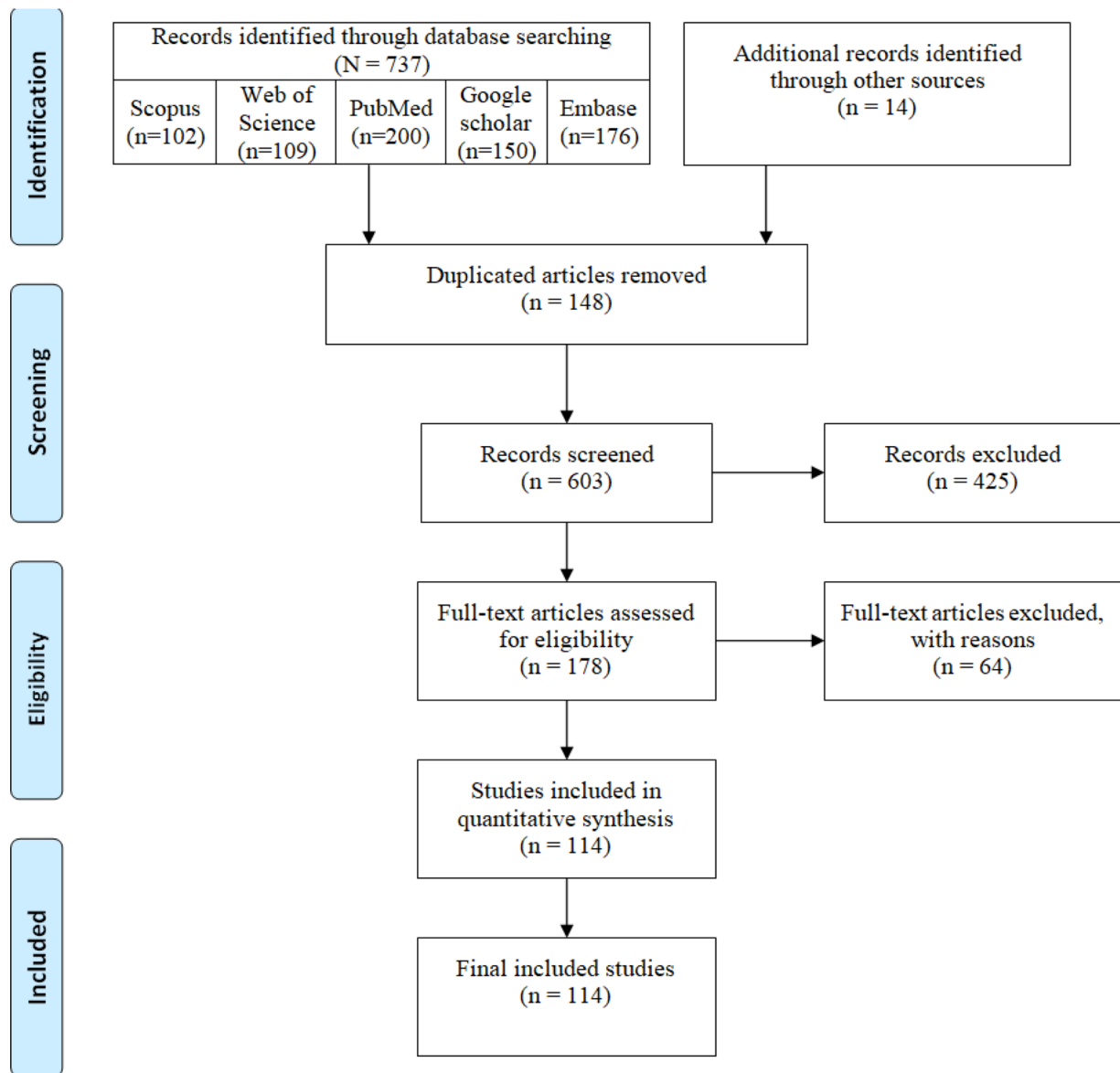


Fig. 1. PRISMA flow diagram of the articles selection process.

3.2. Bivariate analysis

In the bivariate analysis applying a cut point of $p < 0.05$ for significance, three variables, mean age ($p < 0.001$, OR of 1.18; 95% CI: 1.08–1.29), hypertension ($p = 0.006$, OR of 1.11; 95% CI: 1.03–1.20), and Diabetes Mellitus ($p = 0.003$, OR of 1.34; 95% CI: 1.10–1.64) had a significant relationship with increased mortality.

We defined borderline association as $0.05 < p < 0.10$. Concerning the demographics, the male gender ($p = 0.06$, OR of 1.04; 95% CI: 1.00–1.09) had a borderline relationship with the mortality rate. In the signs, symptoms and related morbidities, factors having a borderline association (direct or inverse) with mortality rates were chills ($p = 0.05$), throat pain ($p = 0.06$, OR of 0.78; 95% CI: 0.6–1.01), dyspnea ($p = 0.06$, OR of 1.03; 95% CI: 0.99–1.07), olfactory dysfunction ($p = 0.07$), and myalgia ($p = 0.07$, OR of 0.94; 95% CI: 0.88–1.00). After analyzing lab data results, we found that an increased lactate dehydrogenase (LDH) had borderline association ($p = 0.05$). Other than hypertension and diabetes mellitus which demonstrated significant associations with increased mortality, three other comorbidities, CKD ($p = 0.05$, OR of 1.63; 95% CI: 1.01–2.64), malignancy ($p = 0.06$, OR of 1.51; 95% CI: 0.99–2.31), and COPD

($p = 0.07$, OR of 3.93; 95% CI: 0.89–17.30), showed a borderline correlation. Other factors, such as countries' income and positive smoking history, did not exhibit either a significant or borderline correlation with mortality of COVID-19.

The detailed relationship of each variable with mortality rates is thoroughly presented in [Table 3](#).

3.3. Multivariate regression analysis

Taking a step forward, we then conducted a multivariate regression analysis of variables that were found to be significantly associated with COVID-19, with a similar threshold of significance ($p < 0.05$). Independent association with the mortality was observed with Diabetes Mellitus ($P = 0.038$, the adjusted OR of 1.24; 95% CI: 1.01–1.52).

4. Discussion

COVID-19 is caused by SARS-CoV-2 initially detected in Wuhan, China, in December 2019 and currently is the greatest challenge of the health care system all over the world. Preliminary molecular studies have shown that bats can be the potential reservoir of the virus [18]. To

Table 1
Quality assessment checklist.

NO.	Question
1	Does the study address any research question(s) or objective(s)?
2	Does the study provide any theoretical framework for the evaluation method?
3	Does the theoretical framework of the study include any health promotion theory?
4	Does the study provide a timeframe for the data collection?
5	Does the study identify the country where the search was conducted?
6	Does the study mention that the reviewed current evidence was downloaded for evaluation?
7	Does the study discuss the selection criteria for current evidence to be included or excluded for review?
8	Does the study provide a clear description of the evaluation method?
9	Are there at least two independent data extractors with a consensus procedure in place in case of disagreement?
10	Is a list of the reviews current evidence provided?
11	Does the study discuss the findings of the evaluation?
12	Does the study look at the reviewed evidence to promote or enable behavioral change?
13	Does the study discuss any limitations?
14	Does the study provide any future recommendations in general?
15	Does the study state any conflict of interest?

Table 2
List of the variables included in the data analysis.

Demographics	
Male (%)	Mean age
Signs, symptoms, and related morbidities	
Fever	Chest pain
Cough	Dyspnea
Hemoptysis	Sputum expectoration
Throat pain (Pharyngalgia)	Nose discharge
Diarrhea	Nasal obstruction
Nausea	ARDS
Vomiting	Shock
Abdominal pain	Cardiac involvement
Dizziness	Abnormal liver function
Headache	Acute kidney injury
Myalgia	Pneumothorax
Malaise (Fatigue)(Asthenia)	Asymptomatic
Laboratory findings and vital signs	
Hyperglycemia	Heart rate (average)
Lymphopenia	Respiratory rate
Elevated CRP	Mean arterial pressure
Elevated D-dimer	SpO2
Imaging studies	
Chest CT changes	Chest XR changes
Comorbidities	
COPD	Immunosuppression
Diabetes Mellitus	Liver disease
Hypertension	Asthma
Cardiovascular disease	Obesity
Cerebrovascular disease	Smoking history
Chronic kidney disease (CKD)	Country income rate
Malignancy	

date, however, no specific treatment has been approved for this disease, and the core of current therapies is symptomatic and supportive care [19]. Therefore, it is crucial to study the rate and the factors affecting mortality in this disease. During this short time-period, many studies have been conducted in this field. Based on these studies, the predictors of mortality can be divided into five categories [20].

4.1. Demographics

Among the demographic factors, age is one of the most important factors affecting mortality, and in our study, age was significantly associated with increased mortality. Studies have shown that the age-related defects in immune cell function and increased production of

inflammatory cytokines may play a role [21]. Studies have shown that the male gender is also a risk factor for severity and higher mortality [22].

4.2. Clinical signs and symptoms

According to the findings, the first ten most common observed signs and symptoms with the highest mean percentage affecting COVID-19 mortality were fever, cough, olfactory dysfunction, postnasal drip, gustatory dysfunction, face pain or heaviness, dyspnea, malaise, arthralgia, and nasal obstruction. Our large sample of 310,494 patients included from 114 studies showed that fever was the most common disease sign. Our findings are consistent with those of others [20,23].

4.3. Laboratory findings

This study does not support the findings of recent studies that have highlighted the role of laboratory results in predicting mortality. For example, a recent study of 485 patients in Wuhan, China, noted the role of LDH and CRP in increasing mortality. The study, conducted on 4659 patients, also found CRP, LDH, Troponin, Creatinine, and Albumin as predictors of mortality [23]. Nevertheless, we only found the increased level of LDH as a relative predictor of mortality. So it seems important to investigate this more thoroughly.

4.4. Imaging studies

Imaging plays a key role in the diagnosis of COVID-19. Among these, are chest X-Rays and Chest CT Scans. Common findings from Chest X-Rays include multifocal peripheral consolidation and multifocal rounded opacities and nodules [23], and in chest CTs there are ground-glass opacities (86%), consolidation (29%), and Crazy-paving (19%) [24]. In contrast, this study does not show any significant correlation between radiologic findings and mortality rate.

4.5. Comorbidities

Endothelial dysfunction is one of the very first changes in diseases such as hypertension, diabetes, Coronary heart disease (CHD), and CKD. Numerous studies have also shown that SARS-COV2 tends to bind to the host Angiotensin-converting enzyme-2 (ACE2) receptor in vascular endothelial cells, which could well justify the role of underlying diseases in increasing mortality [23–25]. Infection-related demand ischemia and direct viral infection of the myocardium have also been reported in studies among the etiologies of increased mortality in patients with COVID-19 with a prior history of cardiovascular disease. The role of underlying diseases alongside age in increasing mortality has been strongly suggested in related articles, which has also been shown in our study, especially in diabetes and hypertension [26]. The pathogenesis of increased mortality of COVID-19 in patients with diabetes is still unknown. Immune dysregulation in diabetic patients such as phagocytic cell dysfunction, inhibition of neutrophil chemotaxis and impaired T-cell mediated immune response can be one of the probable mechanisms [27]. In addition, type 2 diabetes mellitus and coronavirus infection have common pathogenic pathways. So that two receptors of coronavirus, ACE2 and Dipeptidyl-1 Peptidase-4 (DPP4), have also a role in regulating glucose homeostasis[28]. Diabetes was also a strong predictor of mortality among patients suffering Middle-Eastern Respiratory Syndrome (MERS) and SARS in previous studies [29]. Therefore, all diabetic patients with COVID-19, should be taken as being at high risk, even though he or she may present with only mild or no symptoms. These patients will need extra monitoring, and so that their threshold for hospitalization and ICU admission also are lowered.

About hypertension, regular use of medications, including Angiotensin II receptor blockers (ARB) and Angiotensin-converting enzyme inhibitors (ACEI) upregulates ACE2 expression, therefore

Table 3
Different variables and their associations with the hospital mortality of COVID-19 in the bivariate analysis, 2020.

Characteristics	Mean (SD)	Odds ratio (95% CI OR)	p-value
<i>Demographics</i>			
Male (%)	51.59 (13.68)	1.04 (1.00–1.09)	0.06
Mean age*	54.16 (12.33)	1.18 (1.08–1.29)	<0.001
<i>Signs, symptoms, and related morbidities</i>			
Fever	68.48 (23.40)	1.01 (0.98–1.04)	0.47
Cough	58.37 (18.16)	1.01 (0.97–1.04)	0.79
Hemoptysis	2.29 (1.96)	3.71 (0.23–61.05)	0.36
Throat pain (Pharyngalgia)	22.33 (16.15)	0.78 (0.60–1.01)	0.06
Diarrhea	16.47 (12.56)	1.04 (0.96–1.12)	0.34
Nausea	11.45 (9.06)	1.08 (0.92–1.27)	0.34
Vomiting	8.11 (6.72)	1.25 (0.92–1.71)	0.16
Abdominal pain	9.37 (12.58)	1.03 (0.93–1.13)	0.57
Dizziness	9.82 (14.91)	1.02 (0.68–1.55)	0.93
Headache	22.19 (20.83)	0.93 (0.84–1.03)	0.18
Myalgia	22.58 (18.32)	0.94 (0.88–1.00)	0.07
Malaise (Fatigue)(Asthenia)	36.84 (22.72)	0.98 (0.94–1.02)	0.36
Chest pain	9.41 (8.33)	0.97 (0.83–1.14)	0.71
Dyspnea	37.40 (25.46)	1.03 (0.99–1.07)	0.06
Sputum expectoration	23.00 (11.48)	0.97 (0.89–1.06)	0.49
Nose discharge	24.25 (19.29)	0.00 (0.00–0.00)	0.99
Nasal obstruction	32.09 (22.77)	0.97 (0.83–1.13)	0.65
ARDS	39.68 (30.85)	1.02 (0.96–1.08)	0.64
Shock	25.55 (1.59)	1.01 (0.96–1.06)	0.73
Cardiac involvement	24.57 (24.92)	1.01 (0.93–1.11)	0.75
Abnormal liver function	18.48 (15.80)	0.94 (0.64–1.39)	0.76
Acute kidney injury	14.60 (16.62)	2.40 (0.65–8.85)	0.19
Pneumothorax	1.91 (1.90)	0.92 (0.34–2.45)	> 0.9
Asymptomatic	11.77 (11.77)	2.34 (0.03–170.73)	0.70
<i>Laboratory findings and vital signs</i>			
Hyperglycemia	33.91 (1.00)	-	> 0.9
Lymphopenia	54.37 (20.51)	1.09 (0.95–1.24)	0.22
Elevated CRP	72.57 (43.47)	1.02 (0.96–1.08)	0.48
Elevated D-dimer	33.13 (30.83)	1.01 (0.93–1.10)	0.77
Heart rate (average)	89.72 (4.49)	1.12 (0.73–1.72)	0.60
Respiratory rate	21.46 (2.43)	1.18 (0.59–2.37)	0.64
Mean arterial pressure	93.16 (4.00)	1.24 (0.00–0.00)	0.99
SpO2	95.09 (1.59)	-	0.99
<i>Imaging studies</i>			
Chest CT changes	87.44 (14.67)	1.00 (0.94–1.07)	0.94
Chest XR changes	67.09 (29.70)	5.06 (0.00–0.00)	0.99
<i>Comorbidities</i>			
COPD	5.15 (5.56)	3.93 (0.89–17.30)	0.07
Diabetes Mellitus*	17.49 (12.46)	1.34 (1.10–1.64)	0.003
Hypertension*	32.17 (21.82)	1.11 (1.03–1.20)	0.006
Cardiovascular disease	12.24 (10.83)	1.12 (0.98–1.30)	0.11
Cerebrovascular disease	5.54 (3.67)	1.77 (0.88–3.57)	0.11
Chronic kidney disease	7.61 (9.32)	1.63 (1.01–2.64)	0.05
Malignancy	10.90 (20.41)	1.51 (0.99–2.31)	0.06
Immunosuppression	4.84 (5.59)	1.00 (0.78–1.29)	0.99
Liver disease	7.61 (19.38)	1.04 (0.87–1.23)	0.67
Asthma	8.32 (6.15)	1.07 (0.83–1.38)	0.62
Obesity	30.86 (13.00)	1.85 (0.58–5.89)	0.30
Smoking history	14.53 (12.49)	1.09 (0.96–1.24)	0.17
Country income rate:	-	2.46 (0.71–8.54)	0.16

* $p < 0.05$.

facilitating the entry of SARS-CoV-2 into pneumocytes which ultimately increases the severity and fatality of infection. But there is no evidence showing that the termination of ACEI and ARB in patients with COVID-19 infection would be beneficial [30]. Interestingly, no association was found between smoking and increased mortality. This finding is unlike several previous studies that showed association between smoking and high mortality rate in patients with COVID-19 [31].

5. Conclusion

Our findings support that older age, hypertension and diabetes mellitus might increase the risk of mortality among patients with

COVID-19. In the multivariate analysis, only Diabetes Mellitus demonstrated an independent relationship with increased mortality. Further studies may be needed to ascertain the relationship of possible risk factors with COVID-19 mortality.

6. Limitations and strengths

This is an extensive systematic review of COVID-19 mortality and its associated factors. We screened a large number of available articles in several databases, assessed their quality, and extracted relevant data to run regression analysis. However, we were not able to obtain adequate information to run weighted analysis and draw forest plots. As many of

our studies comprised of those with small populations, it was not feasible to analyze according to the population density. Given that the studies are of case series, cross-sectional design, it was also not possible to pool the data together to estimate the heterogeneity between the studies. We attempted to categorize the countries based on income and present a map, demonstrating the differences between countries in presented cases in the literature. Owing to the circumstances of the pandemic, published data on some potentially suitable factors were limited. Therefore, these factors were not included in our study. Stability and availability of medical service and the role of lack of facility, treatment protocols, economic situations, and ethnicity of the patients are some of these missing variables.

7. Clinical implications

Health-care providers should pay special attention to comorbidities such as diabetes and hypertension because these conditions, if not controlled, can increase mortality in patients with COVID-19.

8. Research implications

By conducting further and more complete studies on patients with COVID-19, a more appropriate and complete model can be found for factors related to patient mortality. Also, based on the sample size, different weights can be given to these studies to consider the effect of sample size.

Author contributions

Esmail Mehraeen: The conception and design of the study, Drafting the article, Final approval of the version to be submitted; **Amirali Karimi:** Acquisition of data; **Alireza Barzegary:** Analysis and interpretation of data; **Farzin Vahedi:** Acquisition of data; **Amir Masoud Afsah:** Drafting the article; **Omid Dadras:** Final approval of the version to be submitted; **Banafsheh Moradmand-Badie:** Acquisition of data; **Seyed Ahmad Seyed Alinaghi:** The conception and design of the study, Analysis and interpretation of data, Revising it critically for important intellectual content, Final approval of the version to be submitted, **Shayesteh Jahanfar:** Revising it critically for important intellectual content.

Financial support

This research did not receive any specific grant from funding agencies in the public, commercial, or not-for-profit sectors.

Data availability

The authors state that all information provided in this article can be obtained from the author on request.

Declaration of Competing Interest

The authors declare that there is no conflict of interest regarding the publication of this manuscript.

Acknowledgements

The present study was conducted in collaboration with Khalkhal University of Medical Sciences, Iranian Institute for Reduction of High-Risk Behaviors, Tehran University of Medical Sciences, and Department of Global Health and Socioepidemiology, Kyoto University.

References

- [1] Organization WH. Rolling updates on coronavirus disease (COVID-19) 2020, April 24 [Available from: <https://www.who.int/emergencies/diseases/novel-coronavirus-2019/events-as-they-happen>].
- [2] Ghiasvand F., Ghadimi M., Ghadimi F., Safarpour S., Hosseinzadeh R., SeyedAlinaghi S., Symmetrical polyneuropathy in coronavirus disease 2019 (COVID-19), *IDCases* 21 (2020) e00815.
- [3] Organization WH. Coronavirus Disease 2019 (COVID-19) Situation Report-141 2020 [Available from: <https://www.who.int/emergencies/diseases/novel-coronavirus-2019/situation-reports>].
- [4] D. Cutler, How will COVID-19 affect the health care economy? *JAMA* 323 (22) (2020) 2237–2238.
- [5] Gupta M., Abdelmaksoud A., Jafferany M., Lotti T., Sadoughifar R., Goldust M. COVID-19 and economy. *Dermatol. Ther.* 2020:e13329.
- [6] S. Seyed Alinaghi, M. Ghadimi, M. Hajiabdolbaghi, M. Rasoolinejad, L. Abbasian, M.H. Nezhad, et al., Prevalence of COVID-19-like Symptoms among People Living with HIV, and Using Antiretroviral Therapy for Prevention and Treatment, *Curr HIV Res* 18 (5) (2020) 373–380.
- [7] C. Bowie, T. Hill, Exit strategy to control covid-19 and relaunch the economy, *BMJ* 369 (2020) m1851.
- [8] A. Banerjee, L. Pasea, S. Harris, A. Gonzalez-Izquierdo, A. Torralbo, L. Shallcross, et al., Estimating excess 1-year mortality associated with the COVID-19 pandemic according to underlying conditions and age: a population-based cohort study, *Lancet* 395 (10238) (2020) 1715–1725.
- [9] F. Zhou, T. Yu, R. Du, G. Fan, Y. Liu, Z. Liu, et al., Clinical course and risk factors for mortality of adult inpatients with COVID-19 in Wuhan, China: a retrospective cohort study, *Lancet* 395 (10229) (2020) 1054–1062.
- [10] L. Lin, S. Ting, H. Yufei, L. Wendong, F. Yubo, Z. Jing, Epitope-based peptide vaccines predicted against novel coronavirus disease caused by SARS-CoV-2, *Virus Res.* 288 (2020) 198082.
- [11] Z. Wu, J.M. McGoogan, Characteristics of and important lessons from the Coronavirus Disease 2019 (COVID-19) Outbreak in China: summary of a Report of 72314 cases from the Chinese Center for Disease Control and Prevention, *JAMA* 323 (2020) 1239–1242.
- [12] S.R.J. Moghadam, S. Bayrami, S.J. Moghadam, R. Golrokhi, F.G. Pahlaviani, S SeyedAlinaghi, Zika virus: a review of literature, *Asian Pac. J. Trop. Biomed.* 6 (12) (2016) 989–994.
- [13] A Lee, Wuhan novel coronavirus (COVID-19): why global control is challenging? *Public Health* 179 (2020) A1–A2.
- [14] A. Wilder-Smith, D.O. Freedman, Isolation, quarantine, social distancing and community containment: pivotal role for old-style public health measures in the novel coronavirus (2019-nCoV) outbreak, *J. Travel Med.* 27 (2) (2020).
- [15] N.F. BinDhim, A. Hawkey, L. Trevena, A systematic review of quality assessment methods for smartphone health apps, *Telemed. e-Health* 21 (2) (2015) 97–104.
- [16] B.C. Zapata, J.L. Fernández-Alemán, A. Idri, A. Toval, Empirical studies on usability of mHealth apps: a systematic literature review, *J. Med. Syst.* 39 (2) (2015) 1.
- [17] F.H. McKay, C. Cheng, A. Wright, J. Shill, H. Stephens, M. Uccellini, Evaluating mobile phone applications for health behaviour change: a systematic review, *J. Telemed. Telecare* 24 (1) (2018) 22–30.
- [18] C. Salata, A. Calistri, C. Parolin, G. Palu, Coronaviruses: a paradigm of new emerging zoonotic diseases, *Pathog. Dis.* 77 (9) (2019) ftaa006.
- [19] X. Huang, F. Wei, L. Hu, L. Wen, K. Chen, Epidemiology and clinical characteristics of COVID-19, *Arch. Iran. Med.* 23 (4) (2020) 268–271.
- [20] M. Baay, B. Lina, A. Fontanet, A. Marchant, M. Saville, P. Sabot, et al., SARS-CoV-2: virology, epidemiology, immunology and vaccine development, *Biol. J. Int. Assoc. Biol. Stand.* 66 (2020) 35–40.
- [21] S.M. Opal, T.D. Girard, E.W. Ely, The immunopathogenesis of sepsis in elderly patients, *Clin. Infect. Dis.* 41 (Supplement 7) (2005) S504–SS12.
- [22] J.-M. Jin, P. Bai, W. He, F. Wu, X.-F. Liu, D.-M. Han, et al., Gender differences in patients with COVID-19: focus on severity and mortality, *Front. Public Health* 8 (2020) 152.
- [23] Tian W., Jiang W., Yao J., Nicholson C.J., Li R.H., Sigurslid H.H., et al. Predictors of mortality in hospitalized COVID-19 patients: a systematic review and meta-analysis. *J. Med. Virol.* 2020. doi: 10.1002/jmv.26050.
- [24] Bonow R., Fonarow G., O'Gara P., Yancy C. Association of Coronavirus Disease 2019 (COVID-19) With Myocardial Injury and Mortality *JAMA Cardiol.* Published online March. 2020;27.
- [25] T. Guo, Y. Fan, M. Chen, X. Wu, L. Zhang, T. He, et al., Cardiovascular implications of fatal outcomes of patients with coronavirus disease 2019 (COVID-19), *JAMA Cardiology* 5 (2020) 811–818.
- [26] J.P. Kanne, Chest CT findings in 2019 novel coronavirus (2019-nCoV) infections from Wuhan, China: Key Points For the Radiologist, *Radiological Society of North America*, 2020.
- [27] A.M. Angelidi, M.J. Belanger, C.S. Mantzoros, Commentary: COVID-19 and diabetes mellitus: what we know, how our patients should be treated now, and what should happen next, *Metab. Clin. Exp.* 107 (2020) 154245.
- [28] G. Iacobellis, COVID-19 and diabetes: can DPP4 inhibition play a role? *Diabetes Res. Clin. Pract.* 162 (2020) 108125.
- [29] A. Kumar, A. Arora, P. Sharma, S.A. Anikhandi, N. Bansal, V. Singla, et al., Is diabetes mellitus associated with mortality and severity of COVID-19? A meta-analysis,

- Diabetes Metab Syndr 14 (4) (2020) 535–545.
- [30] R. Pranata, M.A. Lim, I. Huang, S.B. Raharjo, A.A Lukito, Hypertension is associated with increased mortality and severity of disease in COVID-19 pneumonia: a systematic review, meta-analysis and meta-regression, *J. Renin-Angiotensin-Aldosterone Syst.*: JRAAS 21 (2) (2020) 1470320320926899.
- [31] J.S. Alqahtani, T. Oyelade, A.M. Aldhahir, S.M. Alghamdi, M. Almeahmadi, A.S. Alqahtani, et al., Prevalence, severity and mortality associated with COPD and smoking in patients with COVID-19: a rapid systematic review and meta-analysis, *PloS One* 15 (5) (2020) e0233147.