

Uncontrolled admixture and loss of genetic diversity in a local Vietnamese pig breed

Cécile Berthouly-Salazar¹, Sophie Thévenon², Thu Nhu Van³, Binh Trong Nguyen³, Lan Doan Pham³, Cuong Vu Chi³ & Jean-Charles Maillard⁴

¹Department of Botany & Zoology, DST-NRF Centre of Excellence for Invasion Biology (C-I-B), University of Stellenbosch, Matieland 7602, South Africa

²Centre de Coopération Internationale en Recherche Agronomique pour le Développement (CIRAD), UMR INTERTRYP, 34398 Montpellier, France

³National Institute of Animal Husbandry (NIAH), Tu Liem, Hanoi, Vietnam

⁴Centre de Coopération Internationale en Recherche Agronomique pour le Développement (CIRAD), UPR AGIRs, 34398 Montpellier, France

Keywords

Admixture, crossbreed, exotic, hybrids, pig, Vietnam.

Correspondence

Thu Nhu Van, National Institute of Animal Husbandry (NIAH), Tu Liem, Hanoi, Vietnam.
Tel: + 844 37193139; Fax: + 844 37182531;
E-mail: nhuvanhu@gmail.com

Received: 10 January 2012; Accepted: 18 January 2012

Ecology and Evolution 2012; 2(5): 962–975

doi: 10.1002/ece3.229

Abstract

The expansion of intensive livestock production systems in developing countries has increased the introduction of highly productive exotic breeds facilitating indiscriminate crossbreeding with local breeds. In this study, we set out to investigate the genetic status of the Vietnamese Black H'mong pig breed by evaluating (1) genetic diversity and (2) introgression from exotic breeds. Two exotic breeds, namely Landrace and Yorkshire used for crossbreeding, and the H'mong pig population from Ha Giang (HG) province were investigated using microsatellite markers. Within the province, three phenotypes were observed: a White, a Spotted and a Black phenotype. Genetic differentiation between phenotypes was low (0.5–6.1%). The White phenotypes showed intermediate admixture values between exotic breeds and the Black HG population (0.53), indicating a crossbreed status. Management practices were used to predict the rate of private diversity loss due to exotic gene introgressions. After 60 generations, 100% of Black private alleles will be lost. This loss is accelerated if the admixture rate is increased but can be slowed down if the mortality rate (e.g., recruitment rate) is decreased. Our study showed that a large number of markers are needed for accurately identifying hybrid classes for closely related populations. While our estimate of admixture still seems underestimated, genetic erosion can occur very fast even through indiscriminate crossbreeding.

Introduction

Since the domestication of animal species, livestock movements and trade have been important driving factors for the genetic make-up of existing breeds, with selection and drift. One of the best examples is the high diversity of African cattle breeds, which results from different migration waves of taurine and zebu cattle (Hanotte et al. 2002). However, since the middle of the 20th century, technological advances have been facilitating gene flows throughout the world, increasing their rate and spread (Mathias and Mundy 2005; Hiemstra et al. 2006; Valle Zárate et al. 2006).

Toward the end of the 20th century, gene flow reached developing countries, resulting in an expansion of intensive livestock production systems; an expansion referred to as the “livestock revolution” (Delgado et al. 1999). Increasing

demand has led to the use of a limited number of breeds for intensive production systems sidelining local breeds. In developing countries where small-scale farming systems remain the main source of production (Huynh et al. 2007), different strategies for increasing productivity have been implemented either via the direct use of improved exotic breeds or by crossbreeding. Despite the fact that there are well-documented examples of unsuccessful projects using exotic breeds (Sainath 1996; Ayalew et al. 2003; Rutledge et al. 2010), such a strategy is still common practice. Crossbreeding of local and exotic improved breeds can show a faster impact on performance than long selection schemes for the improvement of local breeds, and are therefore more beneficial in the short term. However, as another consequence, it is one of the major threats for the disappearance of local genetic diversity, inducing displacement (Hanotte et al. 2010) or

genetic erosion. Indiscriminate crossbreeding or extensive use of exotic germplasms can lead to genetic erosion by dilution or eradication of the local genetic pool (Rege and Gibson 2003). Recent studies have been warning about the endangered status of animal genetic resources (Taberlet *et al.* 2008, 2011).

FAO (1999) identifies two main weaknesses in monitoring local domestic diversity in developing countries: (1) many nondescript local breeds for which it is unclear whether they form homogenous groups; and (2) the current monitoring of breed erosion does not capture genetic dilution of local breeds by indiscriminate crossbreeding. Few reports of genetic erosion are found in the literature for local breeds in developing countries, merely some examples on Ankole cattle in Africa, Vechur in India, Kao Lumpoon cattle in Laos, Namaqua and Red maassai sheep in Africa (Katushabe *et al.* 2001; Mathias and Mundy 2005 and references therein). However, to our knowledge, there is no study to date that clearly investigates genetic erosion by admixture of exotic breeds in local breeds. In this study, we set out to address the main two constraints encountered by FAO in monitoring local diversity: (1) the genetic characterization of the local breed, namely the Vietnamese H'mong breed, and (2) the estimation of its genetic dilution.

In Vietnam, pig production is divided into smallholder production and small-medium, medium, and large production. Medium and large production involves more than 20 sows and use of exotic breeds. These farming systems are centralized in areas of high population density and amount to 10% of the Vietnamese pig population (Gauthier *et al.* 2009). Smallholder systems dominate pig production in Vietnam (Thong *et al.* 1996) and account for about 80% of the total pig population (Kinh *et al.* 2002). Imported exotic breeds in Vietnam include Landrace, Yorkshire, Duroc, Hampshire, and Pietrain (Gauthier *et al.* 2009). According to the Vietnamese Ministry of Agriculture and Rural Development (MARD), current research investment priorities for genetics are to develop large-scale commercial/industrial pig production in concentrated areas (the Red River, Mekong delta, and the Southeast zones), and to create a nucleus herd of pure exotic breeds and crossbred breeds (Kinh *et al.* 2002). One of the most common crossbreeds uses the Mong Cai breed, as its utility for fattening in a cross with exotic pig breeds has been demonstrated (Rodríguez and Preston 1997). Yorkshire and Landrace breeds are commonly used in crossbreed programmes, as with the Mong Cai breed in northern provinces (Le and Tuyen 1998; Huong Tra 2003). According to the Vietnamese authorities, there is no official importing of animals from neighboring countries, but unofficial practices have been observed. The only pigs that are moved from China to Vietnam are local pigs traded between villages on both sides of the border (Cocks *et al.* 2009). In Vietnam, the percentage of indigenous sows declined from 72% of the total

population in 1994 to only 26% in 2002 (Huyen *et al.* 2006). Of its 14 local breeds, five are now considered as vulnerable, two are in a critical state, and three are facing extinction. One of the most emblematic Vietnamese local breeds is raised by the H'Mong ethnic group inhabiting the northern Ha Giang (HG) province bordering on China. They raise the H'mong black chicken, which is considered to have medicinal properties (Berthouly *et al.* 2009a), H'mong cattle, which are one of the largest Vietnamese breeds (Berthouly *et al.* 2010), and finally the H'mong black pig. According to consumers and farmers, this pig breed, which is assumed to have a Black coat, produces more and better fat than other breeds. Although its cultural value is high, little is known about its genetic status. Geographical characteristics and farming practices may have structured this pig population that has been isolated for decades. However, since the 1980s with the Doi Moi policy, HG province has recently been reached by the "livestock revolution," involving productivity and exotic breed introductions. In northern provinces, pigs resembling exotic white breeds have been imported, mainly from China. They also show similar characteristics, such as higher food demand, but they are already vaccinated. In a province where householders lose their animals to diseases every year, this is a valuable point. Migrations from neighboring provinces and governmental policies have led to industrial farms using exotic breeds, namely Landrace and Yorkshire and their crossbreed (Gauthier *et al.* 2009). In HG city, the capital of the province, "intensive" farms with 10–30 pigs have been created (*i.e.*, the biggest farms in that province). HG householders have therefore started using "exotic like" pigs from China or from intensive farms.

Surrounded by exotic pigs, the H'mong black pig may not resist and little is yet known about it. What is its genetic pattern? Is it already crossbred? What is the effect of indiscriminate crossbreeding on its genetic pool? How long will it take to lose its specific genetic pool if no conservation programmes are launched? These are the main questions that this study focused on. Genetic data, phenotypic data, and management practices were combined to estimate the degree of introgression to date and to predict the effects of a prolonged introgression.

Materials and Methods

Sampling procedure

The remote Vietnamese province of HG (Fig. 1, 22°08'–23°19'N; 104°33'–105°33'E) is split into districts (11), communes (193), and villages (1715). A stratified sampling protocol was applied, with three strata: district/commune/village. The 11 districts were surveyed with one to five communes per district (35 in total) and one to eight villages per commune (207 in total). On average, three unrelated pigs per village or 16.3 pigs per commune were sampled.

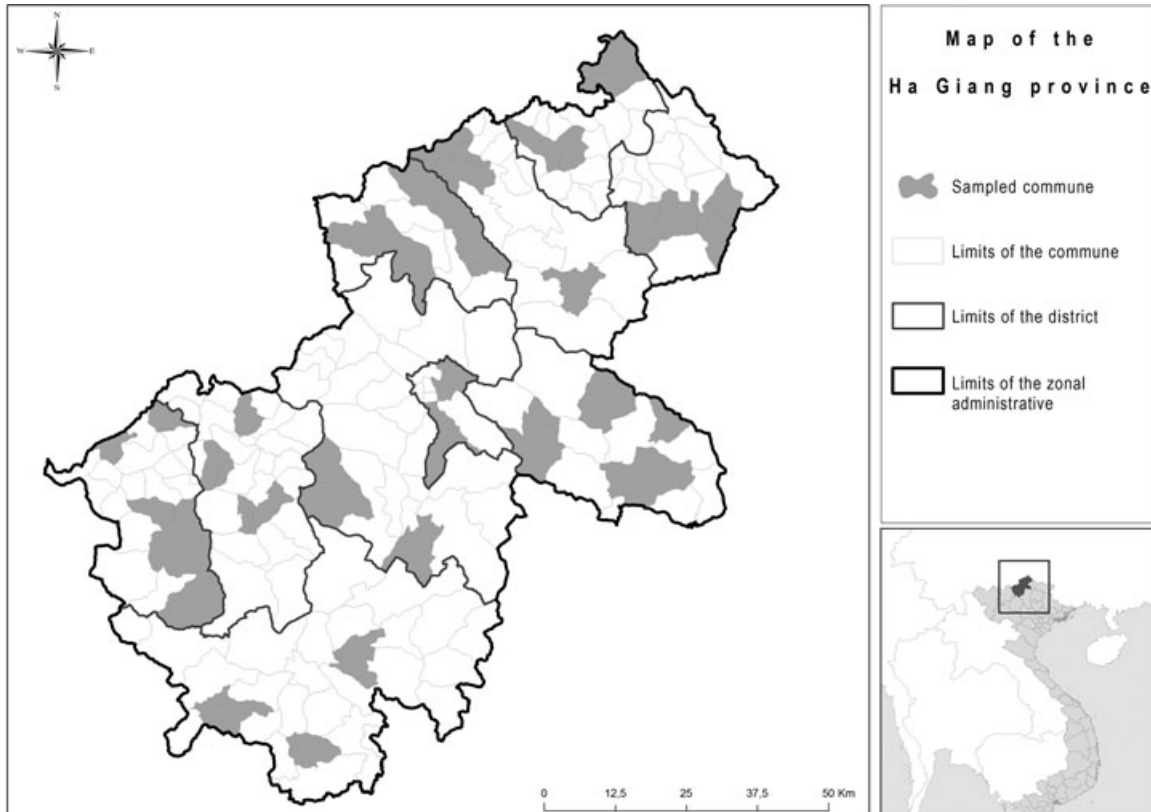


Figure 1. Map of Ha Giang (HG) province. (A) District borders (bold lines); (B) sampled commune in pale gray.

For each of the 567 samples, geographic coordinates, measurements, and genotypes were recorded in a database linking morphometric information to molecular information. The commune was the scale on which F -statistics were computed. According to the National Institute of Animal Husbandry (NIAH), improvement programmes have been implemented in northern provinces using two exotic breeds: Landrace and Yorkshire. Samples from these breeds were collected at the NIAH in Hanoi: 22 and 25 individuals for Landrace and Yorkshire, respectively.

Microsatellite markers

Genomic DNA was extracted from tissue samples using the QIAamp Kit from QIAGEN. The PCR products were labeled with fluorescent dyes and genotyped using a capillary sequencer (Beckman Coulter CEQ8000) for 16 microsatellite markers recommended by FAO (S0026, S00355, S0068, S0097, S0155, S0215, S00226, S0227, SW1067, SW122, SW240, SW2410, SW632, SW72, SW857, SW936). These markers belonged to different chromosomes, except SW1067 and SW122, both mapping to chromosome 6. Genotypes from this study are available on request.

Genetic analyses

Summary statistics

The presence of null alleles was tested using FreeNA (Chapuis and Estoup 2007): loci with estimated frequencies of null alleles $r \geq 0.2$ were considered to be potentially problematic for calculations. Expected and Observed heterozygosities were calculated using GENETIX 4.4 (Belkhir *et al.* 2000). GENEPOP software (Rousset and Raymond 1995) was used to compute F -statistics (Weir and Cockerham 1984) and Hardy–Weinberg equilibrium tests (Rousset and Raymond 1995). Test significance was corrected with sequential Bonferroni correction on loci. Allelic richness and private allelic richness were calculated using the rarefaction method of HP-Rare software (Kalinowski 2005). During the surveys, three phenotypes were observed: (1) a white phenotype with some black skin spots and with straight ears looking similar to the Yorkshire breed, called White pig in the rest of the text (49 samples); (2) a black spotted white-haired phenotype with hanging ears (252 samples) called Spotted pig; (3) a black phenotype with hanging ears corresponding to the Black H'mong pig breed (266 samples) called Black pig.

In this study, we used “White” pig for white pigs from HG province, and “Exotic” pig for the Landrace and Yorkshire pigs sampled. An earlier morphometric study (Berthouly et al. 2007) showed that body traits could be used to differentiate between the White and the Black HG populations, but not between the Black and the Spotted HG populations. White HG pigs have long and vertical ears that are also characteristic of the Yorkshire breed, whereas Black and Spotted HG pigs are characterized by long hair, hanging ears, and a belly touching the ground.

Genetic structure identification

We investigated the genetic structure and individual assignments using a Bayesian clustering procedure implemented in STRUCTURE (Pritchard et al. 2000), with the admixture model and correlated allele frequency (Falush et al. 2003) from $K = 1$ –10, 10 times each with 10^6 iterations following a burn-in period of 300,000. The values for the number of clusters (K) were assessed according to Evanno et al. (2005) by the ($D \cdot \Delta K$) criterion after testing for $K = 1$ using the Pritchard approach (Pritchard et al. 2000). The program estimated the posterior distribution (q) of each individual's admixture coefficient. STRUCTURE software was run first for the exotic and HG dataset (three HG phenotypes, Landrace and Yorkshire breeds), then for the HG dataset (i.e., the three phenotypes), and finally for the Black population only.

We tested the genetic pattern of the Black HG phenotype for isolation by distance (IBD) based on pairwise kinship coefficients between individuals using SPAGeDi 1.3 software (Hardy and Vekemans 2002). As suggested by Vekemans and Hardy (2002), the kinship coefficient presented in Loiselle et al. (1995) was chosen as the pairwise estimator of genetic relatedness. Kinship coefficient values (F_{ij}) were regressed on d_{ij} , where d_{ij} was the spatial distance between individuals i and j . Standard errors were assessed by jackknifing data for each locus. Spatial correlation between F_{ij} and d_{ij} was tested by permutation (9999) on individuals. Significant correlations were associated with the IBD process.

Hybrid discrimination

In order to assess the discrimination power of our microsatellite set, we generated 100 individuals for each of four genotypic classes that originated after two generations of hybridization, that is, first-generation hybrids (F1), second-generation hybrids (F2), backcrosses of F1 with the first parental population (BE), backcrosses of F1 with the second parental population (BL). Parental source populations were the Exotic (Landrace and Yorkshire mixed) breed and the local Black HG population. Genotypes were generated using HYBRIDLAB software (Nielsen et al. 2006).

We then used NEWHYBRIDS software (Anderson and Thompson 2002) to compute the posterior probability (q') of each individual belonging to each of six genotypic classes that originated after two generations of hybridization as described above. We ran the program for two datasets: (1) the simulated dataset with Exotic and Black parental populations and (2) the real datasets with Exotic (P0), Black (P1), Spotted, and White pigs. For both runs, we provide a priori population information for all the Exotic samples and for 10 individuals from the Black HG population. The Black HG individuals were selected as the ones showing the highest q -values from STRUCTURE analyses. We used a burn-in period of 150,000 followed by 500,000 iterations. The simulated dataset was also then evaluated using STRUCTURE in a similar manner to the empirical data from $K = 1$ to $K = 7$.

Modeling of management practices and future evolution of allelic frequencies

Householders were questioned about their management practices. They were asked to estimate the age at first parturition, the farrow interval, and the mortality rate (MR). According to the interviews, the householders did not practice any selection for reproduction. Reproductive sows were raised freely, while most of the fattening pigs were shut in sheds. However, personal observations and interviews revealed that they often escaped. This information, plus the admixture rate (AR) estimated from genetic data, was used to create a model designed to estimate the evolution of allelic frequencies and admixture in the Black population. The model was run using R software (R Core Development Team 2006) and made it possible to estimate the evolution of allelic frequencies in the local population in view of management practices. The parameters used in the model were allele frequencies, the AR, and the MR. According to the surveys, 9% of the pigs recorded were White pigs. However, that proportion was underestimated because, at the time, we were focusing on sampling local pigs; therefore, our genetic estimate of AR was used instead in the model. We considered that the parental stock was composed of 1000 reproductive pigs. For generation 0, two parental stocks were used: B0 (Black population) and W0 (White population), both using allele frequencies from this study. At generation B1, a pool of 2000 gametes was constituted of $(1 - AR)$ gametes randomly selected from B0, and AR gametes from W0. From generation $n + 1$, because an overlapping generation existed, the new generation participated in the reproductive stock at the mortality rate (MR): $MR \times (1 - AR)$, $(1 - MR) \times (1 - AR)$ gametes from parental population $Bn - 1$ were randomly selected, and AR gametes from W0 stock, which remained constant as these pigs were bought from outside and only kept for one year. Our model considered a constant population size and took into account genetic drift by randomly selected gametes from the gamete

Table 1. Summary of genetic statistics.

Per population	N_i	H_e	H_o	Mean number of alleles per locus	F_{IS}
Landrace	22	0.632	0.617	5.8 (5.62)	0.024
Yorkshire	25	0.606	0.555	5.4 (5.17)	0.085
White HG	49	0.791	0.742	9.1 (7.84)	0.063
Black HG	266	0.803	0.596	10.0 (8.36)	0.258
Spotted HG	252	0.804	0.605	10.1 (8.59)	0.248

N_i , number of individuals; H_e , unbiased expected heterozygosity; H_o , observed heterozygosity; F_{IS} , inbreeding coefficient. Mean number of alleles per locus using rarefaction methods are shown in parentheses.

pool. The parameters were one batch of 1000 individuals for 100 generations in a constant population size. The model was replicated 100 times. We tested three values for the AR, AR = 0 as no admixture, AR = 0.25, as estimated by us, and AR = 0.5, and two for the MR, MR = 0.4, following our interviews, and MR = 0.2. In the following analysis, an allele was considered as lost when its frequency was equal to 0.

Results

The Black, the White, and the Spotted phenotypes

The expected heterozygosity was similar for all three phenotypes (0.791–0.804) (Table 1). Regarding the observed heterozygosity, the Black HG population showed the lowest value (0.596), followed by the Spotted (0.605), and the White population showed the highest value (0.742). The Black and Spotted populations had 15 alleles that were not found in the White population and 83 alleles not found in the two Exotic breeds. When using a rarefaction method based on the smallest sample size, the average numbers of private alleles per locus were 0.39 for the Exotic population, 0.13 for the White population, and 0.31 for the Black population. The F_{IS} values were at least four times higher for the Black and Spotted

populations (0.26 and 0.25, respectively) than for the White population. The highest genetic differentiation was found between Landrace and Black HG populations (18%). Genetic differentiation between the White and Black HG populations was 6.1% and 4.1% between the White and Spotted HG populations. The F_{ST} value was low (0.5%) between the Black and Spotted HG populations.

When we performed the Bayesian procedure on the global dataset (i.e., the three phenotypes and the two exotic breeds), we obtained a subdivision into two clusters. ($D \cdot \Delta K$ was the highest for $K = 2$; Fig. S1.) The two exotic breeds, Landrace and Yorkshire, belonged to cluster 1 with q_1 probability > 0.99 (Fig. 2A). The Black HG population belonged to cluster 2 with a mean q_2 probability of 0.97 ± 0.05 SD and the Spotted HG population with $q_2 = 0.92 \pm 0.14$ SD. The White HG population was a mixture of both clusters with $q_2 = 0.53 \pm 0.18$ SD (Fig. 2A). Histograms of q_1 values averaged per commune plotted on a grid map of phenotype frequencies are shown in Figure 3. The high proportion of white phenotypes observed per commune was congruent with the membership values of the white cluster.

When analyzing the HG population alone, we found $K = 2$ with one cluster represented by the White population (C_W) and the other by the Black population (C_B) (Fig. S1). Within the Spotted population, individuals seemed to belong either to the white cluster (22% with $q_{CB} > 0.9$) or the black cluster (49% with $q_{CW} > 0.9$). Only 10% of Spotted pigs showed intermediate values ($0.3 < q < 0.7$). The q_{CB} values averaged across individuals with Black and Spotted phenotypes reached a mean AR of 0.25 with the White phenotype cluster. Following our results, we put forward the hypothesis that the White phenotype is the result of an admixture between exotic and local breeds, and the Spotted phenotype is the result of multigeneration crossing.

The Bayesian procedure on Black HG pigs revealed no genetic subpopulations. The value of the criterion used was the highest for $K = 1$ following Pritchard's procedure. The

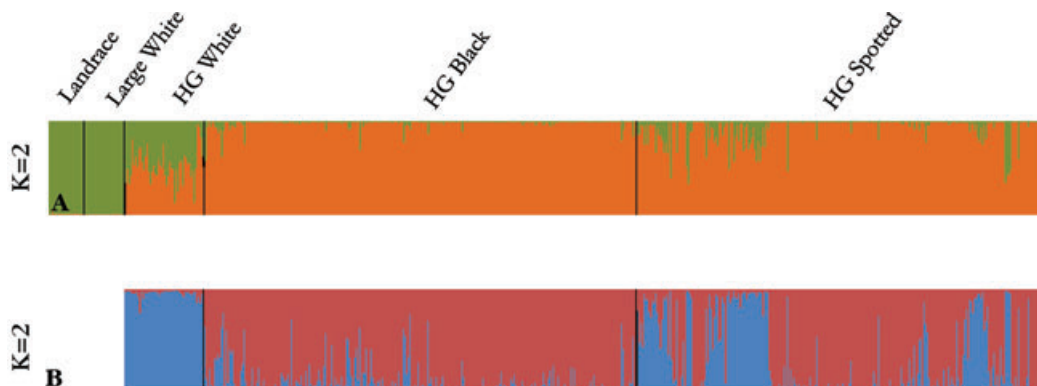


Figure 2. Summary of admixture results. (A) Using Exotic breeds and HG populations; (B) using HG populations (White, Spotted, and Black).



Figure 3. White phenotype distribution (grid map) and mean q_1 values for Exotic cluster (bars). The background color represents the probability of observing white phenotypes. The lighter it is, the higher is the proportion of white phenotypes. Bars represent the average q_1 value per commune of belonging to the Exotic cluster.

values of the kinship coefficient averaged over a set of distance classes were plotted against geographical distance (Fig. S2). Considering all pairs of individuals, the regression slope $b \pm SE = 0.0097 \pm 0.0018$ was highly significant ($P < 0.00001$). Individual kinship coefficients negatively correlated with geographical distance showing a logarithmic relationship, indicating an IBD process.

Hybridization and accuracy of hybrid discrimination

We first ran STRUCTURE on the simulated dataset with Exotic and Black HG as parental populations. We found that $K = 2$, thereby representing the two parental clusters, Exotic (E) and Black (B). As such, we expected that parental (i.e., pure) individuals would show q -values > 0.9 and all hybrid classes should have q -values < 0.9 and near to 0.5, at least for F1 and F2. The results showed that 92% of HG Black could be identified as parental individuals ($q_B > 0.9$; Fig. 4). Conversely, differentiation was not possible, at least between exotic pure and exotic backcross pigs, with 100% of exotic parental individuals and 98% of exotic backcrosses showing q_E values > 0.9 . Both F1 and F2 showed q -values lower than 0.4, which did not allow their distinction. Backcrosses with

Table 2. Percentage of individuals assigned to a class using the simulated dataset by HYBRIDLAB.

q' threshold	True class	N_i	Assigned to						
			Exotic	Black	F1	F2	BE	BL	
$q' > 0.9$	Exotic	47	83						
	Black	266		93			1		
	F1	100				30	3	2	
	F2	100				2	45	4	
	BE	100				1	2	25	
	BL	100				1	13		15
$q' > 0.7$	Exotic	47	92						
	Black	266		95			1		1
	F1	100				55	6	5	0
	F2	100				4	58	8	
	BE	100				5	8	52	0
	BL	100				2	25		42

q' is the posterior probability obtained from NEWHYBRID analysis; results are presented for $q' > 0.9$ and $q' > 0.7$. N_i , number of individuals tested; BE, backcrosses with Exotic pigs; BL, backcrosses with Black Ha Giang pigs.

Black HG had the most intermediate q -values ranging from 0.09 to 0.92.

While STRUCTURE is used to estimate ARs, NEWHYBRIDS is assumed to distinguish first- or second-generation crosses more accurately. Using NEWHYBRIDS on the simulated dataset, the efficiency of our marker set in discriminating between crossbreeding classes was very variable (Table 2). More than 92% of individuals for both parental populations (at a threshold $q' > 0.7$) were assigned as parents. In addition, no hybrid of any class was assigned as a parent. Of the individuals from class F1, 55% were assigned correctly and 11% missassigned to other hybrid classes. F2 individuals showed a substantially higher rate of assignment at $q' > 0.9$ compared to other hybrid classes. This difference was attenuated when considering an assignment threshold of $q' > 0.7$. The lowest correct rate (15%), at $q' > 0.9$, was found for Black HG backcrosses (BL). In addition, they also showed the lowest similar missassignment rate (13%). Of the individuals assigned to F1 and F2 classes, 83% and 80%, respectively, were true F1 and F2 for $q' > 0.7$.

NEWHYBRIDS run on the empirical data identified more than 98% of Black HG as phenotypic Black HG and 100% of Exotic pigs as Exotic ones (Table 3). According to this analysis, 86% of Spotted HG individuals were classified as pure Black and 7.5% as crossbreds. A total of 59% of White HG pigs fell into the F2 category and, surprisingly, 6% into Black HG. Conversely, this means that 35% of White HG pigs showed q' values below 0.7 and were thus not assigned to any category.

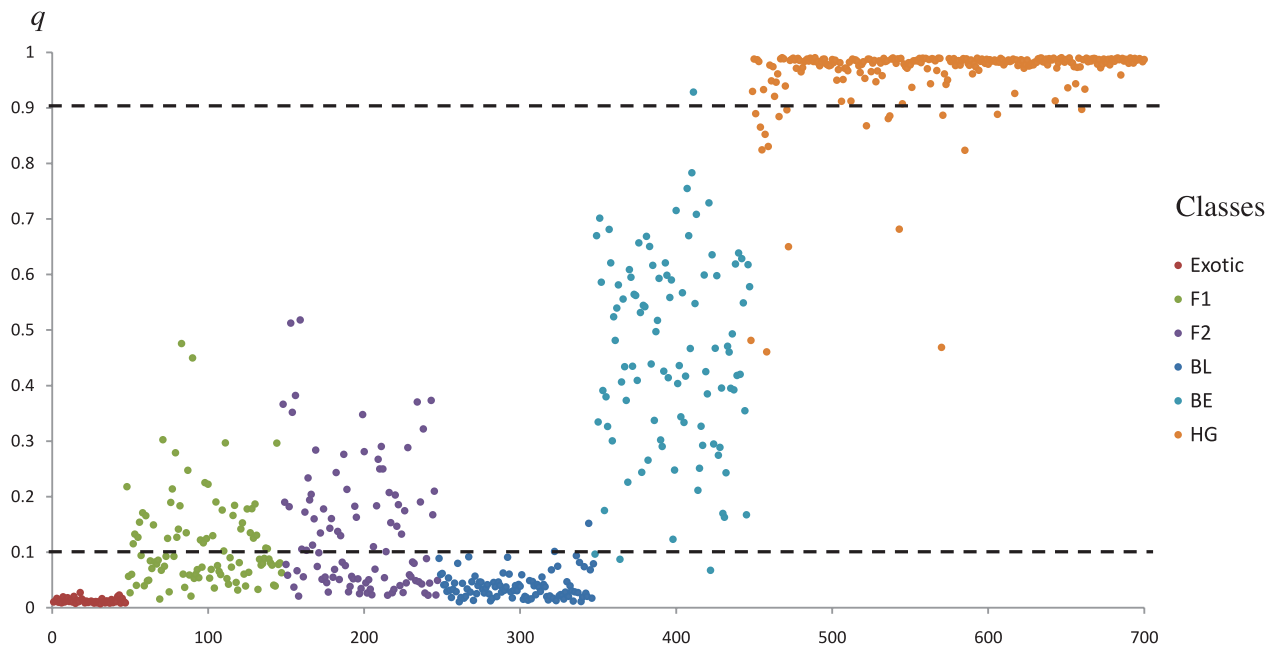


Figure 4. Estimates of q -values using STRUCTURE for simulated genotypes of each of the six possible “genotypic classes” of parents and hybrids that are created accounting for two generations of mating between Exotic (cluster 1) and Black HG (cluster 2) populations. Dotted lines indicate $q_1 = 0.1$ and $q_2 = 0.9$.

Table 3. Assignment results of the Exotic and Local HG pigs dataset.

Phenotypic class	Number of genotyped individuals per class	Assignment group	Number of assigned individuals per q' range			Total individuals assigned with $q' > 0.70$ and (%)
			$q' > 0.9$	$q': 0.8-0.9$	$q': 0.7-0.8$	
Exotic	47	Exotic	47	0	0	47 (100)
HG Black	266	HG Black	257	1	4	262 (98)
		F2	1	0	0	1 (0.4)
HG Spotted	252	HG Black	206	7	3	216 (86)
		F2	6	6	2	14 (06)
		HG Black-F1	1	3	1	5 (02)
HG White	49	HG Black	2	0	1	3 (06)
		F2	20	4	5	29 (59)

q' is the posterior probability obtained from NEWHYBRID analysis.

Effect of introgression on the evolution of private alleles

According to the householder interviews, the average age of first parturition was at 18 months and the farrow interval was about 8.5 months. On average, each sow was used for two parturitions, and the natural MR in the population averaged 0.4. Mortality was used as a recruitment rate for the reproductive stock in the model, leading to a constant population size (1000 reproductive individuals), the remaining pigs being sold as meat carcasses.

We first tested our model with no admixture and only genetic drift. After 100 generations, 17% of alleles were lost.

Among alleles lost, 38% were from exotic origin from previous admixture. Only four of the 15 private Black alleles were lost.

According to the householders, White pigs were raised for less than one year and only for fattening. In other words, each year the householder bought new White pigs. Consequently, the allele frequencies of the White pigs were assumed to remain constant over the years. The householders did not state that they used White pigs for reproduction but escapes and uncontrolled reproduction can happen. We therefore considered that the probability of crossbreeding was equal to the mean AR ($q_{CB} = 0.25$ averaged across Black and Spotted phenotypes; see above). This frequency was considered

Table 4. Evolution of allele loss per locus: generation times at which an allele is lost.

Mortality	Generation times				Percentage of allele lost	H_{ei}	H_{ef}	A_{ei}	A_{ef}
	Admixture (0.5)		Admixture (0.25)						
	0.4	0.2	0.4	0.2					
Sw2410					0	0.85	0.79	7.0	4.5
SW240					0	0.71	0.7	3.5	3.3
S00355	14	20	33	45	9	0.81	0.81	5.4	5.3
SW1067					0	0.84	0.82	6.3	5.7
S0226	10		21	39	8.3	0.77	0.70	4.4	3.3
		17	26	49	16.6				
	20	21	44	53	25				
S0215	2	4	10	7	8.3	0.82	0.68	5.5	3.2
	10	12	36	30	16.6				
	25	14	40	59	25				
S0227	8	11	18	21	10	0.82	0.62	5.5	2.7
	18	30	21	29	20				
S0026	18	25	26	80	12.5	0.79	0.75	4.9	4.1
S0155	18	41	38	33	10	0.69	0.80	3.2	5.2
Sw632					0	0.76	0.85	4.1	6.5
Sw936	5	6	22	3	7.7	0.84	0.83	6.4	6.0
S0068					0	0.81	0.89	8.0	8.8
Sw122					0	0.63	0.75	2.7	4.0
Sw857	11	30	16	36	9	0.86	0.81	7.1	5.1
	20	58	45	70	18.2				
S0097	16	23	53	76	10	0.83	0.82	5.9	5.3
Sw72					0	0.81	0.82	5.4	5.6
Range	2–25	4–58	10–53	3–80	0–53				
Average					0.79	0.78	5.3	4.9	

Expected heterozygosity at $t = 0$ (H_{ei}) and $t = 100$ (H_{ef}); Effective number of alleles $t = 0$ (A_{ei}) and $t = 100$ (A_{ef}).

constant across generations; in other words, reproduction with White pigs always amounted to 25% in the HG pig population.

We ran the model for 100 generations and for each locus. At time 0, the Black phenotype population showed 15 private alleles. According to the model, after 30 generations, 47% of private alleles were lost. At 50 and 60 generations, the percentage of lost alleles reached 93% and 100%, respectively. Of the 15 Black private alleles, 15 were lost and two new, previously private alleles from the White population, were gained. In total, 10% of alleles were lost. Expected heterozygosity passed from 0.79 to 0.78 and effective alleles from 5.3 to 4.9 after 100 generations (Table 4). While at $t = 0$, F_{ST} between White and Black HG was 0.061, after 100 generations of crossbreeding F_{ST} would be 0.0002.

We then tested the model using a higher AR and a lower MR. The model with the highest admixture and MRs showed the highest acceleration in allele loss. After 10 generations, 33% of private alleles were lost and 100% after only 30 generations. The admixture effect was greater on genetic erosion compared to the MR effect. When the AR was increased from

0.25 to 0.5, it accelerated by 13.7 generations, on average, while when the MR was increased from 0.2 to 0.4, it accelerated by 9.7 generations, on average.

Discussion

Our findings demonstrate that introgression involving exotic breeds makes a substantial contribution to the genotypes of the Vietnamese H'mong pig breed. Although introgression between local and exotic breeds has rarely been studied in developing countries, the situation discovered seemed similar to introgression described for domestic–wild species, or wild–wild species, with consequent genetic swamping and extinction of locally restricted gene pools (Frankham et al. 2002; Berthouly et al. 2009a; Chazara et al. 2009; Hertwig 2009; Cabria et al. 2011). Using microsatellite markers, we were able (1) to characterize the genetic pattern of the H'mong pig breed; (2) to show that crossbreeding has occurred and involved many generations of backcrossing; and (3) that indiscriminate crossbreeding will rapidly lead to genetic erosion of the local H'mong pig breed.

Characterization of the Vietnamese local H'mong pig breed

According to FAO (1999), a major problem for the management of Animal Genetic Resources (AnGR) is that there are many local breeds for which it is unclear whether or not they form homogenous groups. For instance, Zimbabwe chickens seem to form a unique genetic pool (Muchadeyi *et al.* 2007). Rout *et al.* (2008) showed that Indian goat breeds could be classified in two major genetic clusters. Zhang *et al.* (2007) studied 27 indigenous Chinese cattle breeds. They highlighted that grouping breeds according to their geographical distribution was not always consistent because of human migratory movements. While HG cattle and goat populations are structured into subpopulations (Berthouly *et al.* 2009b, 2010), HG chicken and buffalo populations should be considered as one genetic pool (Berthouly *et al.* 2009a, c). Similarly to chickens and buffaloes, the Black H'mong pig population can be considered as one population showing no genetic subdivision. However, a very clear IBD pattern was found, associated with a high F_{IS} value. Such a pattern is in agreement with management practices and continuous distribution. Pigs are usually sold at commune level or between neighboring villages, simulating a stepping-stone diffusion model. From a conservation perspective, these results would have two consequences. First, implementation or facilitation of exchanges of reproductive animals at province level should be organized in order to decrease inbreeding. Second, national Vietnamese institutions might decide to create either an ex-situ or in-situ conservation herd; it would need to select a representative sample of the genetic diversity found in the province. In order to do so, they could also take into consideration a coloration criterion when selecting the first reproductive stock and only select the Black phenotype. In addition, a policy should be established to limit introgression mainly in the central and southern areas of the province. These areas showed the highest rates of introgression and frequencies of White pigs, probably due to the fact that main roads connecting China and southern Vietnamese provinces pass through these areas.

Identification of hybrids

The development of molecular genetic markers has greatly benefited AnGR conservation issues. Microsatellite markers combined with modern analytical approaches for clustering (Manel *et al.* 2005) can tease apart the genetic relationships and uniqueness of breeds, making it possible to prioritize breeds for conservation (Caballero and Toro 2002; Reist-Marti *et al.* 2003). However, a crucial point for a conservation project is to estimate the "purity" of the breed and thus, to accurately document the degree of hybridization and introgression. To date, Bayesian softwares have generally proven to be efficient in identifying pure breeds (Vähä

and Primmer 2006; Sanz *et al.* 2008; Marie *et al.* 2010). In this study, both admixture softwares were able to correctly identify Black HG breeds (at least 93%). By contrast, NEWHYBRIDS correctly identified Exotic pure breeds while STRUCTURE was not able to distinguish them from simulated exotic backcrosses. When it came to the detection of the subsequent generations of crossbreeding, the power was more limited. Discrimination power has been investigated by several authors. Vähä and Primmer (2006) showed that to efficiently identify F2 and backcrosses as well as F1, 48 loci with an average pairwise $F_{ST} = 0.21$ would be necessary. Using nine microsatellites and an average $F_{ST} = 0.26$, Sanz *et al.* (2008) were able to discriminate between parental populations and hybrids but not between hybrids. In our simulated dataset, NEWHYBRIDS, with 100% of hybrids identified as such, was more accurate than STRUCTURE (48%). Conversely, Marie *et al.* (2010) found that STRUCTURE was more accurate in discriminating F1 than NEWHYBRIDS (99.4% and 76%, respectively) but that STRUCTURE had a higher rate of missassigned backcrosses in parental classes than NEWHYBRIDS (30% and 10%, respectively). We found similar observations with Exotic backcrosses being assigned to pure Exotic by STRUCTURE, whereas NEWHYBRIDS backcrosses were missassigned within hybrid classes. Schwartz and Beheregaray (2008) studied introgression between Australian bass and perch populations. Unlike our results, in their study the first generation seemed to discriminate better than backcrosses. While in our cases, F_{ST} values reached a maximum of 0.18, F_{ST} values approximated to 0.7 in the case of Australian fishes. According to Marie *et al.* (2010), F_{ST} values may not be alone in influencing the accuracy of NEWHYBRIDS results. For instance, it performed better for hybrid discrimination when higher proportions of hybrids were found in the data. More than 40% will significantly improve results compared to a proportion of 10%. In our analyses, we kept a very similar proportion in both simulated and empirical datasets (56% and 50%). Consequently, according to Marie *et al.* (2010), our accuracy should not have suffered from low hybrid proportions, but only from low F_{ST} values (0.18). It can be expected that for populations with a very similar genetic pool, the discrimination of hybrids might only be possible when the contribution of one parental population becomes significantly greater, as in the case of backcrosses. Nonetheless, it can also quickly become impossible to distinguish backcrosses from parental classes (Marie *et al.* 2010).

Overall, NEWHYBRIDS seems to be more accurate than STRUCTURE for detecting hybrids and parent individuals with, however, a low discriminative power between hybrid classes. To improve results, the use of a larger number of microsatellites or of additional markers (such as mtDNA, Y chromosome markers, or single nucleotide polymorphism (SNP), Vilà *et al.* 2003; Koskinen *et al.* 2004) would be appropriate. However, it is highly probable that the complexity

of crossbreeding might add an extra level of difficulty. The H'mong breed is not subjected to any selection scheme, if not the proximity of a member of the opposite sex. If, in addition, overlapping generations have occurred, then the pedigree looks more like a spider's web than a tree. We believe such a pattern to be very common in local breeds in developing countries. In the case of H'mong breed, this complexity can be partly assessed by the substantial diversity of phenotypes found. Coat color phenotypes in pigs, other than black coat, are due to well-known mutations in the *E/MC1R* and *I/KIT* genes (Kijas *et al.* 1998, 2001; Johansson *et al.* 2005) that were absent from the HG population. Still, Spotted pigs, which phenotypically showed a heritage at one stage of hybridization, were genetically similar to Black pigs, suggesting many generations of backcrossing. Consequently, taking all this into account, a combination of descriptors, phenotypes, and multiple types of genetic markers would improve the estimation of the degree of exotic gene introgression into local breeds but, once again, due to the complexity of their pedigree, this may be inaccurately estimated.

Conservation consequences of crossbreeding

The justification for conserving the genetic diversity of local breeds is straightforward. Genetic traits that are or may be useful to husbandry are worth conserving, including those that affect disease resistance, environmental tolerance, and taste. However, farmers are more inclined to raise breeds that are popular on the local market and for which economic gain will be the highest. Many studies have shown that the introduction of exotic breeds is mainly driven by economic forces. In Vietnam, almost 80% of pig production is still in the hands of smallholders, but commercial pig production, raising exotic prolific breeds, is growing fast (FAO AGAL 2005). A popular solution for promoting the rearing of local breeds has been to improve their genetic traits by crossbreeding with highly productive exotic breeds. While an improvement in their production traits can be expected, it is not always the case, as for Mong Cai and Bam Vietnamese local breeds (Herold *et al.* 2010). Moreover, recent concerns have been raised about the genetic swamping of local gene pools by exotic gene pools. Once exotic breeds are introduced, be it controlled or uncontrolled, crossbreeding might lead to genetic erosion by dilution. For instance, uncontrolled crossbreeding was an important factor in the genetic erosion of the local Yucatan Creole pig breed (Drucker and Anderson 2004). While the pure Creole breed accounted for 100% of the pig population in 1940, by 1999 pure Creole pigs amounted to fewer than 100 individuals. Similarly, in the highland areas of Kenya, the use of crosses between exotic cattle breeds with zebu cattle such as the Small East African zebu (SEAZ) has resulted in extensive breed substitution of the SEAZ (Omore *et al.* 1999).

Many studies on wild species have demonstrated the consequences of genetic dilution by introgressive hybridization, ultimately leading to extinction (Levin *et al.* 1996; Rhymer and Simberloff 1996). The consequences of introgression may include reduced fitness, population viability, and survival, as well as disruption of local adaptation and life-history characteristics via the introduction of maladaptive gene complexes (Rhymer and Simberloff 1996; Allendorf *et al.* 2001; McGinnity *et al.* 2003).

Our results showed that the Vietnamese H'mong pig breed exhibited at least 25% of admixture with exotic breeds due to uncontrolled crossbreeding. According to our model, this exotic introgression will greatly affect the genetic diversity of the local breed by modifying the nature of the genetic diversity within populations and by reducing the level of differentiation between populations. Hansen *et al.* (2006) showed that in about 50 years, F_{ST} between contemporary brown trouts decreased around twofold compared to ancestral samples. While genetic differentiation was still very low between White and Black HG pigs (0.061), it disappeared after 100 generations ($F_{ST} = 0.0002$). Conversely, differences in expected heterozygosity (from 0.80 to 0.78) and effective alleles (5 to 4.5) were not so pronounced. The apparent status quo in genetic diversity with exotic introgression has to be taken with caution. Indeed, in our study this was due to the contribution of new alleles from exotic breeds. Similar stability of genetic diversity has been observed in Atlantic salmon with crossbreeding occurring with individuals from multiple farms collectively containing a large genetic variation that mitigates genetic erosion (Bourret *et al.* 2011).

Private alleles and differences in allele frequency distribution are considered the most significant parameters for population differentiation (Beaumont *et al.* 2001; Oliveira *et al.* 2008). According to our results, if management practices are unchanged, nearly 50% of private alleles will be lost within 30 generations, and 100% after 60 generations. If admixture is stopped, only 27% will be lost after 100 generations. While "private alleles" does not automatically mean rare, it is very common that rare alleles are also private. It has been shown that rare alleles can indeed be relevant for some production traits in other livestock species (Grobet *et al.* 1997; Freking *et al.* 2002; Smit *et al.* 2003). The intensity of allelic loss might be considerably variable depending on the level of crossbreeding in the introduced breed. For example, the use of exotic pure individuals from Landrace and Yorkshire breeds, with which 50% of alleles were not shared with Black HG pigs, might considerably accelerate and increase the loss of local alleles. Indeed, Muir *et al.* (2008) found that at least 50% of genetic diversity in ancestral chicken breeds has been lost in commercial pure chicken lines. By using White HG pigs, which are already hybrids and have 90% of alleles in common with Black HG pigs, householders might have slowed down and limited allelic loss. Speed loss is not only affected

by individuals from which introgression occurs but also by the amount of admixture and the rate of mortality which, in a constant population size, would be similar to the recruitment rate. As expected, our simulations showed that an increase in admixture and MRs would lead to an acceleration of allelic loss. The effect of admixture was found to be greater than that of the MR. The direct implication of these results would be that improving sanitary conditions in low-input systems might slow down genetic erosion even when indiscriminate crossbreeding cannot be controlled.

Conclusions

The originality of our study came from the combination of three types of information: (1) phenotypic observation, (2) householder interviews, and (3) genetic data. Such a global procedure should be recommended to gain precision for characterizing and establishing AnGR conservation policies. Our results suggest major gene flow between exotic breeds and the H'mong pig breed. We expect that future AnGR management and improvement projects will carefully consider the use of exotic genetic pools. Our estimation of the number of generations for homogenization of the introduced and local populations could provide some clues for conservation biologists in wildlife management. Translocated populations may genetically homogenize faster than we thought with local populations and, as a consequence, greatly modify the prior management units and induce the disappearance of local adaptations. In our study, we believe that admixture was underestimated due to tool limitations in the case of closely related populations. Further studies using high-throughput SNP chips available in many species such as the pig (Ramos *et al.* 2009) might improve detection of hybrid classes and ARs, even if these tools were developed mainly on commercial breeds (Matukumalli *et al.* 2009; Ramos *et al.* 2009). In addition, we would advise using private alleles and F_{ST} to quantify the degree of genetic erosion.

References

- Anderson, E. C., and E. A. Thompson. 2002. A model-based method for identifying species hybrids using multilocus genetic data. *Genetics* 160:1217–1229.
- Allendorf, F. W., R. F. Leary, P. Spruell, and J. K. Wenburg. 2001. The problems with hybrids: setting conservation guidelines. *Trends Ecol. Evol.* 16:613–622.
- Ayalew, W., B. Rischkowsky, J. M. King, and E. Bruns. 2003. Crossbreds did not generate more net benefits than indigenous goats in Ethiopian smallholdings. *Agr. Syst.* 76:1137–1156.
- Beaumont, M., E. M. Barrat, D. Gottelli, A. C. Kitchener, M. J. Daniels, J. K. Pritchard, and M. W. Bruford. 2001. Genetic diversity and introgression in the Scottish Wildcat. *Mol. Ecol.* 10:319–336.
- Belkhir, K., P. Borsa, J. Goudet, L. Chikhi, and F. Bonhomme. 2000. GENETIX, logiciel sous Windows TM pour la génétique des populations. Laboratoire Génome, Populations, Interactions: CNRSUPR. 9060. Université Montpellier II, Montpellier, France.
- Berthouly, C., S. Messad, T. Nhu Van, H. Hoang Thanh, E. Verrier, and J. C. Maillard. 2007. International workshop on the domesticated animal biodiversity of Vietnam in the context of globalization, 2007-12-13/2007-12-14, Hanoi, Vietnam. *J. Anim. Sci. Technol.* 1:158–163.
- Berthouly, C., G. Leroy, T. Nhu Van, H. Hoang Thanh, B. Bed Hom, B. Trong Nguyen, C. Vu Chi, F. Monicat, E. Verrier, J. C. Maillard, and X. Rognon. 2009a. Genetic analysis of local Vietnamese chickens provides evidence of gene flow from wild to domestic populations. *BMC Genet.* 10:1–10.
- Berthouly C., D. Do Ngoc, S. Thévenon, D. Bouchel, T. Nhu Van, C. Danes, V. Grosbois, H. Hoang Thanh, C. Vu Chi, and J. C. Maillard. 2009b. How does farmer connectivity influence livestock genetic structure? A case-study in a Vietnamese goat population. *Mol. Ecol.* 18:3980–3991.
- Berthouly, C., X. Rognon, T. Nhu Van, A. Berthouly, H. Thanh Hoang, B. Bed'Hom, D. Laloë, C. Vu Chi, E. Verrier, and J. C. Maillard. 2009c. Genetic and morphometric characterization of a local Vietnamese swamp buffalo population. *J. Anim. Breed. Genet.* 127:74–84.
- Berthouly, C., J. C. Maillard, L. Pham Doan, T. Nhu Van, B. Bed Hom, G. Leroy, H. Hoang Thanh, D. Laloë, N. Bruneau, C. Vu Chi, V. Nguyen Dang, E. Verrier, and X. Rognon. 2010. Revealing fine scale subpopulation structure in the Vietnamese H'Mong cattle breed for conservation purposes. *BMC Genet.* 11:45–55.
- Bourret, V., P.T. O'Reilly, J. W. Carr, P. R. Berg, and L. Bernatchez. 2011. Temporal change in genetic integrity suggests loss of local adaptation in a wild Atlantic salmon (*Salmo salar*) population following introgression by farmed escapees. *Heredity* 106:500–510.
- Caballero, A., and M. A. Toro. 2002. Analysis of genetic diversity for the management of conserved subdivided populations. *Conserv. Genet.* 3:289–299.
- Cabria, M. T., J. R. Michaux, B. J. Gómez.-Moliner, D. Skumatov, T. Maran, P. Fournier, J. L. De. Luzuriaga, and R. Zardoya. 2011. Bayesian analysis of hybridization and introgression between the endangered european mink (*Mustela lutreola*) and the polecat (*Mustela putorius*). *Mol. Ecol.* 20:1176–1190.
- Chapuis, M.-P., and A. Estoup. 2007. Microsatellite null alleles and estimation of population differentiation. *Mol. Biol. Evol.* 24:621–631.
- Chazara, O., F. Minvielle, D. Roux, B. Bed'hom, K. Feve, J. L. Coville, B. B. Kayang, S. Lumineau, A. Vignal, and J.-M. Boutin. 2009. Evidence for introgressive hybridization of wild common quail (*Coturnix coturnix*) by domesticated Japanese quail (*Coturnix japonica*) in France. *Conserv. Genet.* 11:1051–1062.

- Cocks, P., R. Abila, P. Black, J. Edwards, and I. Robertson. 2009. Livestock trade and marketing networks in Malaysia, Thailand and Myanmar. Report for AusAID-DAFF SPS Capacity Building Project.
- Delgado, C., M. W. Rosegrant, H. Steinfeld, S. Ehui, and C. Courbois. 1999. Livestock to 2020: the next food revolution. *Food Agric. Environ.* 28:1–83.
- Drucker, A. G., and S. Anderson. 2004. Economic analysis of animal genetic resources and the use of rural appraisal methods: lessons from Southeast Mexico. *Int. J. Agr. Sustain.* 2:77–97.
- Evanno, G., S. Regnaut, and J. Goudet. 2005. Detecting the number of clusters of individuals using the software STRUCTURE, a simulation study. *Mol. Ecol.* 34:2611–2620.
- Falush, D., M. Stephens, and J. K. Pritchard. 2003. Inference of population structure using multilocus genotype data: linked loci and correlated allele frequencies. *Genetics* 164:1567–1587.
- FAO. 1999. The global strategy for the management of farm animal genetic resources. FAO, Rome.
- FAO AGAL. 2005. Vietnam: livestock information, sector analysis, and policy branch. FAO, Rome. Available at <http://www.fao.org/ag/againfo/resources/en/publications/sectorbriefs/labVNM.pdf>
- Frankham, R., J. D. Ballou, and D. A. Briscoe. 2002. Introduction to conservation genetics. Cambridge Univ. press, UK.
- Freking, B. A., S. K. Murphy, A. A. Wylie, S. J. Rhodes, J. W. Keele, K. A. Leymaster, R. L. Jirtle, and T. P. L. Smith. 2002. Identification of the single base change causing the callipyge muscle hypertrophy phenotype, the only known example of polar overdominance in mammals. *Genome Res.* 12:1496–1506.
- Gauthier, P., T. T. Phuong, and V. Ninh. 2009. Pig genotypes in Vietnam: demand versus supply. ILRI, Nairobi.
- Grobet, L., L. J. Martin, D. Poncelet, D. Pirottin, B. Brouwers, J. Riquet, A. Schoeberlein, S. Dunner, F. Ménéssier, and J. Massabanda. 1997. A deletion in the bovine myostatin gene causes the double-musled phenotype in cattle. *Nature Genet.* 17:71–74.
- Hanotte, O., D. G. Bradley, J. W. Ochieng, Y. Verjee, E. W. Hill, and J.E. O Rege. 2002. African pastoralism: genetic imprints of origins and migrations. *Science* 296:336–339.
- Hanotte, O., T. Dessie, and S. Kemp. 2010. Time to tap Africa's livestock genomes. *Science* 328:1640–1641.
- Hansen, M. M., D. Bekkevold, L. F. Jensen, K. L. D. Mensberg, and E. E. Nielsen. 2006. Genetic restoration of a stocked brown trout *Salmo trutta* population using microsatellite DNA analysis of historical and contemporary samples. *J. App. Ecol.* 43:669–679.
- Hardy, O. J., and X. Vekemans. 2002. SPAGeDI: a versatile computer program to analyse spatial genetic structure at the individual or population levels. *Mol. Ecol. Notes* 2: 618–620.
- Herold, P., R. Roessler, A. Willam, H. Momm, and A. Valle Zárate. 2010. Breeding and supply chain systems incorporating local pig breeds for small-scale pig producers in Northwest Vietnam. *Livest. Prod. Sci.* 129:63–72.
- Hertwig, S. T., M. Schweizer, S. Stepanow, A. Jungnickel, U. R. Böhle, and M. S. Fischer. 2009. Regionally high rates of hybridization and introgression in German wildcat populations (*Felis silvestris*, Carnivora, Felidae). *J. Zool. Syst. Evol. Res.* 47:283–297.
- Hiemstra, S. J., A. G. Drucker, M. W. Tvedt, J. K. Louwaars, J. K. Oldenbroek, K. Awgichew, S. Abegaz Kebede, P. N. Bhat, and M. da Silva. 2006. Exchange, use and conservation of animal genetic resources—policy and regulatory options. Report CGN 2006/6, Center for Genetic Resources, The Netherlands.
- Huong Tra H. T. 2003. Assessing input in pig production with special focus on feed resources and feeding management in demand and resource driven production systems in Son La Province, Vietnam. Master thesis, Institute of Animal Husbandry in the Tropics and Subtropics, University of Hohenheim.
- Huyen, L. T. T., R. Roessler, U. Lemke, and A. Valle Zárate. 2006. Impact of the use of exotic compared to local pig breeds on socio-economic development and biodiversity in Vietnam. Pp. 459–508 in A. Valle Zarate, K. Musavaya, and C. Schafer, eds. Gene flow in animal genetic resources: a study on status, impact and trends. GTZ, BMZ.
- Huynh, T. T., A.J.A Aarnink, and M. W. A. Drucker. 2007. Pig production in Cambodia, Laos, Philippines, and Vietnam: a review. *Asian J. Agric. Dev.* 4:69–90.
- Johansson A., G. Pielberg, L. Andersson, and I. Edfors-Lilja. 2005. Polymorphism at the porcine dominant white/KIT locus influence coat colour and peripheral blood cell measures. *Anim. Genet.* 36:288–296.
- Kalinowski, S. T. 2005. Hp-rare 1.0: a computer program for performing rarefaction on measures of allelic richness. *Mol. Ecol.* 5:185–189.
- Katushabe, E., J. Wanyama, and I Köhler-Rollefson. 2001. Efforts to save Uganda's unique Ankole cattle must be stepped up. Letter of editor. LIFE Network League for Pastoral Peoples.
- Kijas J. M. H., R. Wales, A. Törnsten, P. Chardon, M. M. Moller, and L. Anderson. 1998. Melanocortin receptor 1 (MC1R) mutations and coat color in pigs. *Genetics* 150:1177–1785.
- Kijas J. M. H., M. Moller, G. Plastow, and L. Andersson. 2001. A frameshift mutation in MC1R and a high frequency of somatic reversions cause black spotting in pigs. *Genetics* 158:779–785.
- Kinh, L. V., L. T. Hai, D. V. Quang, and N. V. Duc. 2002. Pig production in Vietnam. Pp. 65–67 in Priorities for pig research in Southeast Asia and the Pacific to 2010. ACIA Working Paper No. 53, March 2002. ACIAR, Canberra, Australia.
- Koskinen, M. T., H. Hirvonen, P-A Landry, and C. R. Primmer. 2004. The benefits of increasing the number of microsatellites utilized in genetic population studies: an empirical perspective. *Hereditas* 141:61–67.
- Le, P. N., and T. Q. Tuyen. 1998. Building the models of rearing Landrace and Yorkshire breeding sows at smallholder farms with the herd size of 8–10 sows. Pp. 23–26 in Scientific papers

- on animal production 112 from 1996–1997–National Institute of Animal Husbandry. Agriculture Publishing House, Hanoi, Vietnam, Vietnamese.
- Levin, D. A., J. Franciscoortega, and R. K. Jansen. 1996. Hybridization and the extinction of rare plant species. *Conserv. Biol.* 10:10–16.
- Loiselle, B.A., V. L. Sork, J. Nason, and C. Graham. 1995. Spatial genetic structure of a tropical understory shrub, *Psychotria officinalis* (Rubiaceae). *Am. J. Bot.* 82:1420–1425.
- Manel, S., O. E. Gaggiotti, and R. S. Waples. 2005. Assignment methods: matching biological questions with appropriate techniques. *Trends Ecol. Evol.* 20:136–142.
- Marie, A. D., L. Bernatchez, and D. Garant. 2010. Loss of genetic integrity correlates with stocking intensity in brook charr (*Salvelinus fontinalis*). *Mol. Ecol.* 19:2025–2037.
- Mathias, E., and P. Mundy. 2005. Herd movements. League for Pastoral People and Indigenous Livestock Development.
- Matukumalli, L. K., C. T. Lawley, R. D. Schnabel, J. F. Taylor, M. F. Allan, M. P. Heaton, J. O'Connell, S. S. Moore, T. P. Smith, and T. S. Sonstegard. 2009. Development and characterization of a high density SNP genotyping assay for cattle. *PLoS One* 4:e5350.
- McGinnity, P., P. Prodöhl, A. Ferguson, R. Hynes, N.O. Maoiléidigh, N. Baker, D. Cotter, B. O'Hea, D. Cooke, and G. Rogan. 2003. Fitness reduction and potential extinction of wild populations of Atlantic salmon, *Salmo salar*, as a result of interactions with escaped farm salmon. *Proc. R. Soc. Ser. B Biol. Sci.* 270:2443–2450.
- Muchadeyi, F. C., H. Eding, C. B. Wollny, E. Groeneveld, S. M. Makuza, R. Shamseldin, H. Simianer, and S. Weigend. 2007. Absence of population substructuring in Zimbabwe chicken ecotypes inferred using microsatellite analysis. *Anim. Genet.* 38:332–339.
- Muir, W. M., G. K. S. Wong, Y. Zhang, J. Wang, M. A. M. Groenen, R. P. M. A. Crooijmans, H. J. Megens, H. Zhang, R. Okimoto, and A. Vereijken. 2008. Genome-wide assessment of worldwide chicken SNP genetic diversity indicates significant absence of rare alleles in commercial breeds. *Proc. Natl. Acad. Sci. USA* 105:17312–17317.
- Nielsen, E. E. L.A., Bach, and P. Kotlicki. 2006. HYBRIDLAB (version 1.0): a program for generating hybrids from a population samples. *Mol. Ecol. Notes* 6:971–973.
- Oliveira, R., R. Godinho, E. Randi, and P. C. Alves. 2008. Hybridization versus conservation: are domestic cats threatening the genetic integrity of wildcats (*Felis silvestris silvestris*) in Iberian Peninsula? *Philos. Trans. R. Soc. B Biol. Sci.* 363:2953–2961.
- Omoro, A., H. Muriuki, M. Kenyanjui, M. Owango, S. Staal. 1999. Report by the MOA-KARI-ILRI Smallholder Dairy project. ILRI, Nairobi, p. 50.
- Pritchard, J. K., M. Stephens, and P. Donnelly. 2000. Inference of population structure using multilocus genotype data. *Genetics* 155:945–959.
- R Core Development Team. 2006. R: a language and environment for statistical computing. R foundation for Statistical Computing, Vienna, Austria. ISBN 3-900051-07-0. Available at: <http://www.R-project.org>
- Ramos, A. M., R. P. Crooijmans, N. A. Affara, A. J. Amaral, A. L. Archibald, J. E. Beever, C. Bendixen, C. Churcher, R. Clark, and P. Dehais. 2009. Design of a high density SNP genotyping assay in the pig using SNPs identified and characterized by next generation sequencing technology. *PLoS One* 4:e6524.
- Rege, J. E. O., and J. P. Gibson. 2003. Animal genetic resources and economic development: Issues in relation to economic evaluation. *Ecol. Econ.* 45:319–330.
- Reist-Marti, S. B., H. Simianer, J. Gibson, O. Hanotte, and J. E. O. Rege. 2003. Weitzman's approach and conservation of breed diversity: an application to African cattle breeds. *Conserv. Biol.* 17:1299–1311.
- Rhymer, J. M., and D. Simberloff. 1996. Extinction by hybridization and introgression, *Annu. Rev. Ecol. Syst.* 27:83–110.
- Rodríguez, J. L., and T. R. Preston. 1997. Local feed resources and indigenous breeds: fundamental issues in integrated farming systems. *Livest. Res. Rural Dev.* 9:20–26.
- Rousset, F., and M. Raymond. 1995. GENEPOP (version 3–4): population genetics software for exact test and ecumenism. *J. Hered.* 86:248–259.
- Rout, P. K., M. B. Joshi, A. Mandal, D. Laloë, L. Singh, and K. Thangaraj. 2008. Microsatellite-based phylogeny of Indian domestic goats. *BMC Genet.* 9:11–22.
- Rutledge, L. Y., C. J. Garroway, K. M. Loveless, and B. R. Patterson. 2010. Genetic differentiation of eastern wolves in Algonquin Park despite bridging gene flow between coyotes and grey wolves. *Heredity* 105:520–531.
- Sainath, P. 1996. Everybody loves a good drought: stories from India's poorest districts. Penguin Books, India.
- Sanz, N., R. M. Araguas, R. Fernández, M. Vera, and J.-L. García-Marín. 2008. Efficiency of markers and methods for detecting hybrids and introgression in stocked populations. *Conserv. Genet.* 10:225–236.
- Schwartz, T. S., and L. B. Beheregaray. 2008. Using genotype simulations and Bayesian analyses to identify individuals of hybrid origin in Australian bass: lessons for fisheries management. *J. Fish Biol.* 72:435–450.
- Smit, M. K., Segers, L. Garcia Carrascosa, T. Shay, F. Baraldi, G. Gyapay, G. Snowder, M. Georges, N. Cockett, and C. Charlier. 2003. Mosaicism of solid gold supports the causality of a noncoding A-to-G transition in the determinism of the callipyge phenotype. *Genetics* 163:453–456.
- Taberlet, P., A. Valentini, H. R. Rezaei, S. Naderi, F. Pompanon, R. Negrini, and P. Ajmone-Marsan. 2008. Are cattle, sheep, and goat endangered species? *Mol. Ecol.* 17:275–284.
- Taberlet, P., E. Coissac, J. Pansu, and F. Pompanon. 2011. Conservation genetics of cattle, sheep, and goats. *CR Biol.* 334:247–254.

- Thong, T. T., L. T. Hai, and V. A. Quac. 1996. Research work on pig production in the Mekong Delta. *In* J. Pryor, ed. Exploring approaches to research in the animal sciences in Vietnam. A workshop held in city of Hue, Vietnam, 31 July–3 August, 1995. ACIAR Proceeding No. 68, Canberra, Australia.
- Vähä, J. P., and C. R. Primmer. 2006. Efficiency of model-based Bayesian methods for detecting hybrid individuals under different hybridization scenarios and with different numbers of loci. *Mol. Ecol.* 15:63–72.
- Valle-Zárate, A., K. Musavaya, and C. Schäfer. 2006. Gene flow in animal genetic resources. A study on status, impact and trends. Institute of Animal Production in the Tropics and Subtropics, University of Hohenheim, 518 p. Available at: <http://dad.fao.org/cgi-bin/getblob.cgi?sid=6ed07aa1e5e161dfe381a313f9f51453,268>
- Vilà, C., C. Walker, A-K Sundqvist, Ø. Flagstad, Z. Andersone, A Casulli, I Kojola, H Valdmann, J. Halverson, and H. Ellegren. 2003. Combined use of maternal, paternal and bi-parental genetic markers for the identification of wolf-dog hybrids. *Heredity* 90:17–24.
- Weir, B. S., and C. C. Cockerham. 1984. Estimating F-statistics for the analysis of population structure. *Evolution* 38:1358–1370.
- Zhang, G. X., Z. G. Wang, W. S. Chen, C. X. Wu, X. Han, H. Chang, L. S. Zan, R. L. Li, J. H. Wang, W. T. Song. 2007. Genetic diversity and population structure of indigenous yellow cattle breeds of China using 30 microsatellite markers. *Anim. Genet.* 38:550–559.

Supporting Information

Additional Supporting Information may be found online on Wiley Online Library.

Figure S1. Estimates of Δk for two datasets: (1) the global dataset including exotic breeds and HG populations; and (2) the Ha Giang population including the three phenotypes (White, Black, and Spotted).

Figure S2. Isolation by distance pattern of the Black HG pig population.

Please note: Wiley-Blackwell is not responsible for the content or functionality of any supporting materials supplied by the authors. Any queries (other than missing material) should be directed to the corresponding author for the article.